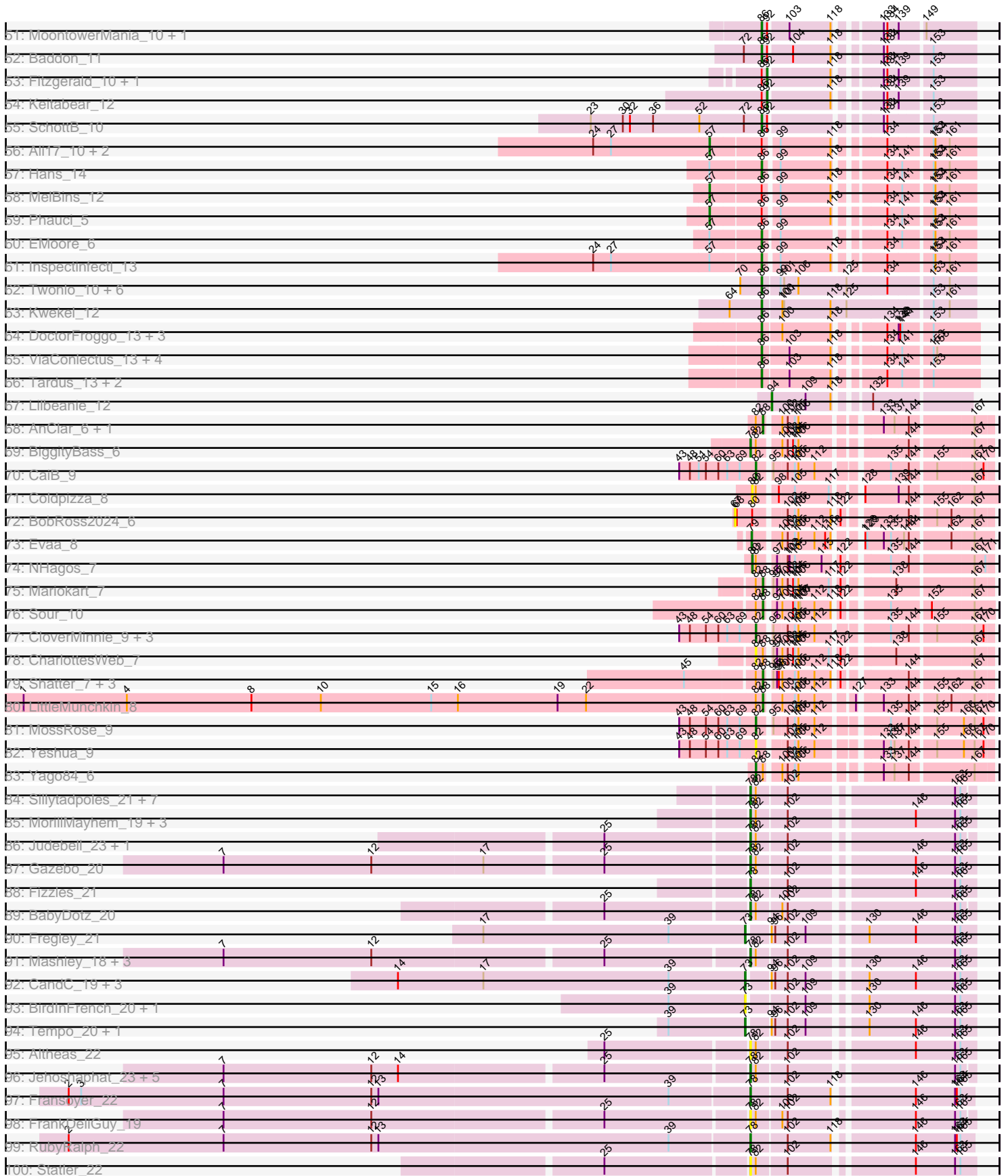
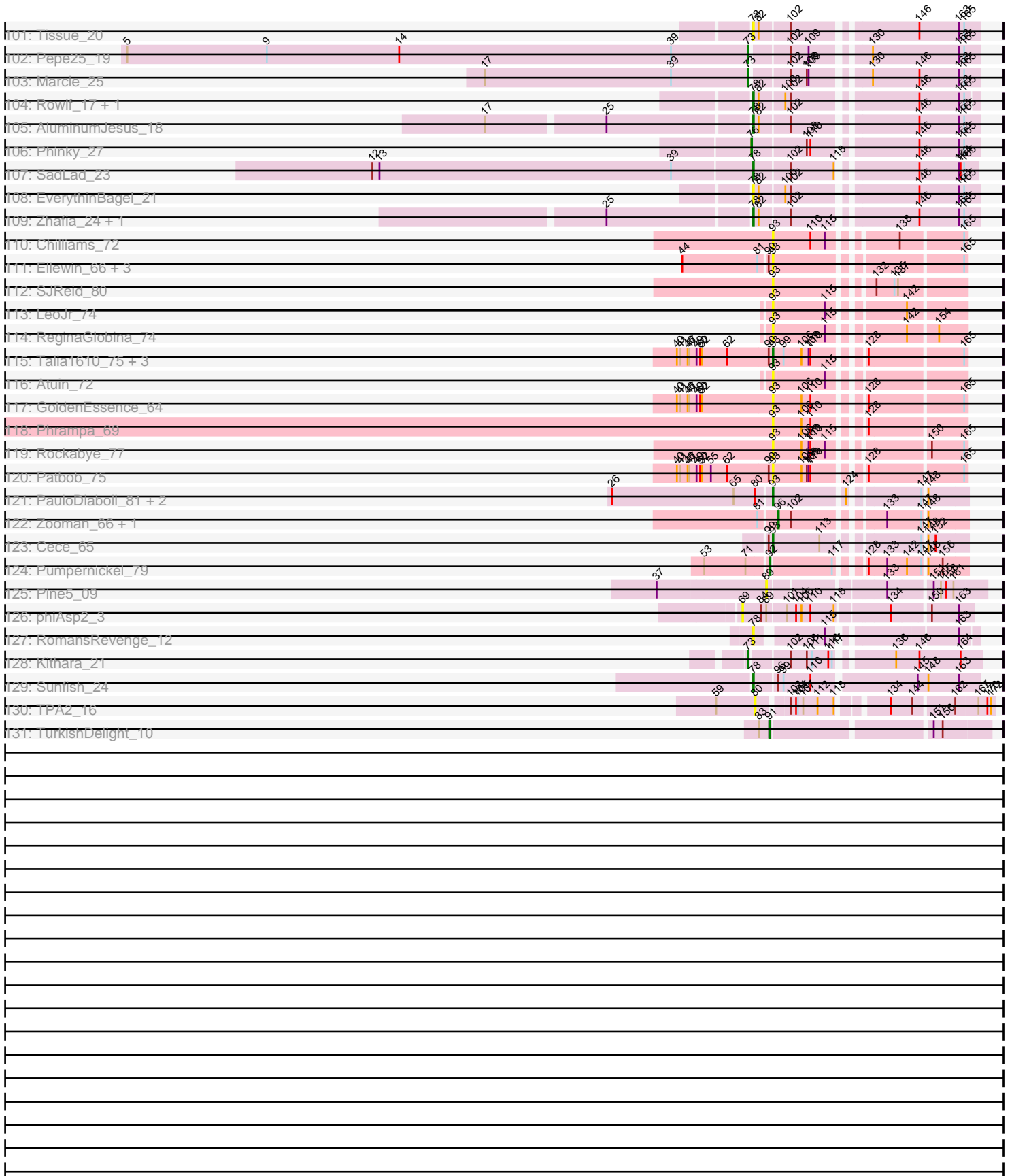


Pham 202604



Pham 202604



Note: Tracks are now grouped by subcluster and scaled. Switching in subcluster is indicated by changes in track color. Track scale is now set by default to display the region 30 bp upstream of start 1 to 30 bp downstream of the last possible start. If this default region is judged to be packed too tightly with annotated starts, the track will be further scaled to only show that region of the ORF with annotated starts. This action will be indicated by adding "Zoomed" to the title. For starts, yellow indicates the location of called starts comprised solely of Glimmer/GeneMark auto-annotations, green indicates the location of called starts with at least 1 manual gene annotation.

Pham 202604 Report

This analysis was run 01/18/25 on database version 583.

Pham number 202604 has 340 members, 75 are drafts.

Phages represented in each track:

- Track 1 : Ranunculus_16
- Track 2 : Tank_16, Wilde_16
- Track 3 : Rizwana_15
- Track 4 : Forrestell_17, NyleyClemson_18, Pointis_21, Odyssey395_23, MellowYellow_18, DogYard_20, Pureglobe5_23, RazzB_16, Kubulix_21
- Track 5 : Beagle_22
- Track 6 : Ollypop_17
- Track 7 : BruhMoment_17
- Track 8 : AWGoat_16
- Track 9 : SilentRX_17
- Track 10 : Calamitous_11, Laurie_11
- Track 11 : Qyrzula_11, Tres_11, Godines_11, Blocker23_11, LizLemon_11, Lars_11
- Track 12 : LilSmirk_11, Brownie5_11, Boyle_11, Hedgerow_11, Kheth_11, Kolhan_11, Opia_11, Ares_11, Rosebush_11, Eaglehorse_11, Glass_11, ItsyBitsy1_11, Lephleur_11, Sabella_11, Faze9_11, MasterPo_11, Bananafish_11, FrenchFry_11, West99_11, Tinciduntolum_12, Coffee_11, Kaleb_11, Phantasmagoria_11
- Track 13 : Arbiter_11, TA17A_11
- Track 14 : Rhinoforte_11, Allegro_11
- Track 15 : Vic9_12
- Track 16 : Holeinone_11
- Track 17 : Akoma_10, Marley1013_10, Gervas_10, OrangeOswald_10, HarveySr_10, Yinz_10, Tydolla_10, Heathcliff_10, Corofin_10, Nozo_10, Kronus_9, Bernardo_10, Deenasa_10, TinyTerror_10, Casbah_9, Chentzyk_9, Rita1961_10, Gadget_11, Neos5_10, Yahalom_10, Philly_9, Phlyer_10, GlenHope_11, Devonte_10, RagingRooster_10, Chandler_10, SynergyX_10, Baloo_10, Chalmers_10, Morty007_10, Audrey_10, Briakila_10, Obutu_10, Pipefish_10, Phaedrus_9, MmasiCarm_10, Ben11_9, Phayeta_10, Jackstina_9, Daisy_10, SlippinJimmy_10, Halfpint_9, RomaT_10, ChaChing_10, Kamiyu_10, Abinghost_10, Compostia_10, Mortcellus_9
- Track 18 : LestyG_10, Athena_11, SwainyDoc_10, Glubnar_10
- Track 19 : TP1604_9, Asis_9, Salete_9, BabyGotBac_9, Maih_9, BayC_9
- Track 20 : YDN12_10
- Track 21 : Xkcd426_10
- Track 22 : Abt2graduatex2_9
- Track 23 : RainyPolka_9
- Track 24 : Mischief19_10

- Track 25 : SmokingBunny_11, Salvador_11, Twister6_11, Arri_12, Danyall_11, Fugax_11, VanDeWege_12, PinkCoffee_11, Nubi_11, Togo_11, Mutzi_11, Evamon_11, KimmyK_11, ClamChowder_11, CoveyB_11, Barb_11
- Track 26 : Jambalaya_11, Savbucketdawg_11, TillyBobJoe_11, Shinji_11, Portcullis_11
- Track 27 : Gezellig_11, Phlop_11, Wizard_11, Fireball_12, PullumCavea_11
- Track 28 : RogerDodger_12, Valary_12, CherryCola_13, YungMoney_11, Halo3_12
- Track 29 : Bakery_12
- Track 30 : Clown_15
- Track 31 : Belphegor_8
- Track 32 : BobBob_9, Sanjuju_10, Angelicage_11, Jabberwocky_10
- Track 33 : Brandonk123_14, Geodirt_11
- Track 34 : Affeca_11, McKinley_12
- Track 35 : Kewpiedoll_12
- Track 36 : YorkOnyx_11
- Track 37 : Saronaya_11, Tycho_11, Kwobi_11, Gustavo_11, Derg_9
- Track 38 : Paries_12, Tangent_9
- Track 39 : Sedona_12, Bibwit_11
- Track 40 : StorminNorm_11, Kroos_11, Gaea_11, Ashertheman_11, Baumdotcom_11, Tangerine_11, LilHam_9, Bizzy_12, JKSyngboy_10
- Track 41 : Rofo_11
- Track 42 : Flatwoods_12
- Track 43 : ChadMasterC_11, Barsten_12
- Track 44 : Lennon_12, FuegoCuervo_15
- Track 45 : RiverRaider_12
- Track 46 : Charming_9, Fosterous_9, Kamashten_12, Galadriel_13, Thing3_12, Nordenberg_6
- Track 47 : Shivanishola_11
- Track 48 : Ribeye_12
- Track 49 : Sitar_12, Vivi2_10
- Track 50 : Stultus_11
- Track 51 : MoontowerMania_10, Love_13
- Track 52 : Baddon_11
- Track 53 : Fitzgerald_10, Ailee_11
- Track 54 : Keitabear_12
- Track 55 : SchottB_10
- Track 56 : Ali17_10, Phinally_12, Leonard_12
- Track 57 : Hans_14
- Track 58 : MelBins_12
- Track 59 : Phauci_5
- Track 60 : EMoore_6
- Track 61 : Inspectinfecti_13
- Track 62 : Twonlo_10, Tiamoceli_13, RoadKill_10, EdmundFerry_11, Chickadee_12, GTE6_13, Dexdert_13
- Track 63 : Kwekel_12
- Track 64 : DoctorFroggo_13, Verity_13, Zipp_13, Delrey21_13
- Track 65 : ViaConlectus_13, Natkenzie_13, Sampson_13, Scioto_13, Abblin_13
- Track 66 : Tardus_13, APunk_14, Zitch_14
- Track 67 : Lilbeanie_12
- Track 68 : AnClar_6, Sisko_6
- Track 69 : BiggityBass_6
- Track 70 : CaiB_9
- Track 71 : Coldpizza_8

- Track 72 : BobRoss2024_6
- Track 73 : Evaa_8
- Track 74 : NHagos_7
- Track 75 : Mariokart_7
- Track 76 : Sour_10
- Track 77 : CloverMinnie_9, Wooper_9, MakoManhole_9, AnarQue_9
- Track 78 : CharlottesWeb_7
- Track 79 : Shatter_7, Axumite_7, Fresco_7, Ligma_7
- Track 80 : LittleMunchkin_8
- Track 81 : MossRose_9
- Track 82 : Yeshua_9
- Track 83 : Yago84_6
- Track 84 : Sillytadpoles_21, Grassboy_22, StrawberryJamm_23, Rudy_19, Teehee_22, Quammi_19, Viceroy_20, Kyva_23
- Track 85 : MorillMayhem_19, Nike_21, Blab_18, Squash_23
- Track 86 : Judebell_23, Phabia_21
- Track 87 : Gazebo_20
- Track 88 : Fizzles_21
- Track 89 : BabyDotz_20
- Track 90 : Fregley_21
- Track 91 : Mashley_18, Llemily_21, Hyperion_19, SallyK_22
- Track 92 : CandC_19, Kelcole_19, Romm_21, RobinRose_21
- Track 93 : BirdInFrench_20, Wilca_20
- Track 94 : Tempo_20, OneinaGillian_20
- Track 95 : Altheas_22
- Track 96 : Jehoshaphat_23, DonaldDuck_21, Lonelysoil_20, Casend_22, Wheelie_20, Wayne3_22
- Track 97 : Fransoyer_22
- Track 98 : FrankDeliGuy_19
- Track 99 : RubyRalph_22
- Track 100 : Statler_22
- Track 101 : Tissue_20
- Track 102 : Pepe25_19
- Track 103 : Marcie_25
- Track 104 : Rowlf_17, Zagie_21
- Track 105 : AluminumJesus_18
- Track 106 : Phinky_27
- Track 107 : SadLad_23
- Track 108 : EverythinBagel_21
- Track 109 : Zhafia_24, Namago_21
- Track 110 : Chilliams_72
- Track 111 : Ellewin_66, DunneganBoMo_68, WaddleDee_68, KSunshine22_69
- Track 112 : SJReid_80
- Track 113 : LeoJr_74
- Track 114 : ReginaGlobina_74
- Track 115 : Talia1610_75, Racecar_76, Bloom_79, Mimi_82
- Track 116 : Atuin_72
- Track 117 : GoldenEssence_64
- Track 118 : Phrampa_69
- Track 119 : Rockabye_77
- Track 120 : Patbob_75
- Track 121 : PauloDiaboli_81, Dodo_81, A3Wally_81
- Track 122 : Zooman_66, Big4_70

- Track 123 : Cece_65
- Track 124 : Pumpnickel_79
- Track 125 : Pine5_09
- Track 126 : phiAsp2_3
- Track 127 : RomansRevenge_12
- Track 128 : Kithara_21
- Track 129 : Sunfish_24
- Track 130 : TPA2_16
- Track 131 : TurkishDelight_10

Summary of Final Annotations (See graph section above for start numbers):

The start number called the most often in the published annotations is 86, it was called in 50 of the 265 non-draft genes in the pham.

Genes that call this "Most Annotated" start:

- APunk_14, Abblin_13, Angelicage_11, Ashertheman_11, Baddon_11, Barsten_12, Baumdotcom_11, Belphegor_8, Bibwit_11, Bizzy_12, BobBob_9, ChadMasterC_11, Charming_9, Chickadee_12, Delrey21_13, Dexdert_13, DoctorFroggo_13, EMOore_6, EdmundFerry_11, Flatwoods_12, Fosterous_9, GTE6_13, Gaea_11, Galadriel_13, Hans_14, Inspectinfecti_13, JKSyngboy_10, Jabberwocky_10, Kamashten_12, Kewpiedoll_12, Kroos_11, Kwekel_12, LilHam_9, Love_13, MoontowerMania_10, Natkenzie_13, Nordenberg_6, RoadKill_10, Rofo_11, Sampson_13, Sanjuju_10, SchottB_10, Scioto_13, Sedona_12, Sitar_12, StorminNorm_11, Stultus_11, Tangerine_11, Tardus_13, Thing3_12, Tiamoceli_13, Twonlo_10, Verity_13, ViaConlectus_13, Vivi2_10, YorkOnyx_11, Zipp_13, Zitch_14,

Genes that have the "Most Annotated" start but do not call it:

- Affeca_11, Ailee_11, Ali17_10, Brandonk123_14, Derg_9, Fitzgerald_10, FuegoCuervo_15, Geodirt_11, Gustavo_11, Keitabear_12, Kwobi_11, Lennon_12, Leonard_12, McKinley_12, MelBins_12, Paries_12, Phauci_5, Phinally_12, Ribeye_12, RiverRaider_12, Saronaya_11, Shivanishola_11, Tangent_9, Tycho_11,

Genes that do not have the "Most Annotated" start:

- A3Wally_81, AWGoat_16, Abinghost_10, Abt2graduatex2_9, Akoma_10, Allegro_11, Altheas_22, AluminumJesus_18, AnClar_6, AnarQue_9, Arbiter_11, Ares_11, Arri_12, Asis_9, Athena_11, Atuin_72, Audrey_10, Axumite_7, BabyDotz_20, BabyGotBac_9, Bakery_12, Baloo_10, Bananafish_11, Barb_11, BayC_9, Beagle_22, Ben11_9, Bernardo_10, Big4_70, BiggityBass_6, BirdInFrench_20, Blab_18, Blocker23_11, Bloom_79, BobRoss2024_6, Boyle_11, Briakila_10, Brownie5_11, BruhMoment_17, CaiB_9, Calamitous_11, CandC_19, Casbah_9, Casend_22, Cece_65, ChaChing_10, Chalmers_10, Chandler_10, CharlottesWeb_7, Chentzyk_9, CherryCola_13, Chilliams_72, ClamChowder_11, CloverMinnie_9, Clown_15, Coffee_11, Coldpizza_8, Compostia_10, Corofin_10, CoveyB_11, Daisy_10, Danyall_11, Deenasa_10, Devonte_10, Dodo_81, DogYard_20, DonaldDuck_21, DunneganBoMo_68, Eaglehorse_11, Ellewin_66, Evaa_8, Evamon_11, EverythinBagel_21, Faze9_11, Fireball_12, Fizzles_21, Forrestell_17, FrankDeliGuy_19, Fransoyer_22, Fregley_21, FrenchFry_11, Fresco_7, Fugax_11, Gadget_11, Gazebo_20, Gervas_10, Gezellig_11, Glass_11, GlenHope_11, Glubnar_10, Godines_11, GoldenEssence_64, Grassboy_22,

Halfpint_9, Halo3_12, HarveySr_10, Heathcliff_10, Hedgerow_11, Holeinone_11, Hyperion_19, ItsyBitsy1_11, Jackstina_9, Jambalaya_11, Jehoshaphat_23, Judebell_23, KSunshine22_69, Kaleb_11, Kamiyu_10, Kelcole_19, Kheth_11, KimmyK_11, Kithara_21, Kolhan_11, Kronus_9, Kubulix_21, Kyva_23, Lars_11, Laurie_11, LeoJr_74, Lephleur_11, LestyG_10, Ligma_7, LilSmirk_11, Lilbeanie_12, LittleMunchkin_8, LizLemon_11, Llemily_21, Lonelysoil_20, Maih_9, MakoManhole_9, Marcie_25, Mariokart_7, Marley1013_10, Mashley_18, MasterPo_11, MellowYellow_18, Mimi_82, Mischief19_10, MmasiCarm_10, MorillMayhem_19, Mortcellus_9, Morty007_10, MossRose_9, Mutzi_11, NHagos_7, Namago_21, Neos5_10, Nike_21, Nozo_10, Nubi_11, NyleyClemson_18, Obutu_10, Odyssey395_23, Ollypop_17, OneinaGillian_20, Opia_11, OrangeOswald_10, Patbob_75, PauloDiaboli_81, Pepe25_19, Phabia_21, Phaedrus_9, Phantasmagoria_11, Phayeta_10, Philly_9, Phinky_27, Phlop_11, Phlyer_10, Phrampa_69, Pine5_09, PinkCoffee_11, Pipefish_10, Pointis_21, Portcullis_11, PullumCavea_11, Pumpernickel_79, Pureglobe5_23, Quammi_19, Qyrzula_11, Racecar_76, RagingRooster_10, RainyPolka_9, Ranunculus_16, RazzB_16, ReginaGlobina_74, Rhinoforte_11, Rita1961_10, Rizwana_15, RobinRose_21, Rockabye_77, RogerDodger_12, RomaT_10, RomansRevenge_12, Romm_21, Rosebush_11, Rowlf_17, RubyRalph_22, Rudy_19, SJReid_80, Sabella_11, SadLad_23, Salete_9, SallyK_22, Salvador_11, Savbucketdawg_11, Shatter_7, Shinji_11, SilentRX_17, Sillytadpoles_21, Sisko_6, SlippinJimmy_10, SmokingBunny_11, Sour_10, Squash_23, Statler_22, StrawberryJamm_23, Sunfish_24, SwainyDoc_10, SynergyX_10, TA17A_11, TP1604_9, TPA2_16, Talia1610_75, Tank_16, Teehee_22, Tempo_20, TillyBobJoe_11, Tinciduntolum_12, TinyTerror_10, Tissue_20, Togo_11, Tres_11, TurkishDelight_10, Twister6_11, Tydolla_10, Valary_12, VanDeWege_12, Vic9_12, Viceroy_20, WaddleDee_68, Wayne3_22, West99_11, Wheelie_20, Wilca_20, Wilde_16, Wizard_11, Wooper_9, Xkcd426_10, YDN12_10, Yago84_6, Yahalom_10, Yeshua_9, Yinz_10, YungMoney_11, Zagie_21, Zhafia_24, Zooman_66, phiAsp2_3,

Summary by start number:

Start 57:

- Found in 9 of 340 (2.6%) of genes in pham
- Manual Annotations of this start: 5 of 265
- Called 55.6% of time when present
- Phage (with cluster) where this start called: Ali17_10 (DE2), Leonard_12 (DE2), MelBins_12 (DE2), Phauci_5 (DE2), Phinally_12 (DE2),

Start 64:

- Found in 28 of 340 (8.2%) of genes in pham
- Manual Annotations of this start: 1 of 265
- Called 3.6% of time when present
- Phage (with cluster) where this start called: Bakery_12 (DC1),

Start 67:

- Found in 1 of 340 (0.3%) of genes in pham
- No Manual Annotations of this start.
- Called 100.0% of time when present
- Phage (with cluster) where this start called: BobRoss2024_6 (DR),

Start 69:

- Found in 8 of 340 (2.4%) of genes in pham

- No Manual Annotations of this start.
- Called 12.5% of time when present
- Phage (with cluster) where this start called: phiAsp2_3 (singleton),

Start 72:

- Found in 10 of 340 (2.9%) of genes in pham
- Manual Annotations of this start: 2 of 265
- Called 20.0% of time when present
- Phage (with cluster) where this start called: Paries_12 (DE1), Tangent_9 (DE1),

Start 73:

- Found in 12 of 340 (3.5%) of genes in pham
- Manual Annotations of this start: 9 of 265
- Called 100.0% of time when present
- Phage (with cluster) where this start called: BirdInFrench_20 (EG), CandC_19 (EG), Fregley_21 (EG), Kelcole_19 (EG), Kithara_21 (singleton), Marcie_25 (EG), OneinaGillian_20 (EG), Pepe25_19 (EG), RobinRose_21 (EG), Romm_21 (EG), Tempo_20 (EG), Wilca_20 (EG),

Start 74:

- Found in 1 of 340 (0.3%) of genes in pham
- Manual Annotations of this start: 1 of 265
- Called 100.0% of time when present
- Phage (with cluster) where this start called: RiverRaider_12 (DE1),

Start 76:

- Found in 1 of 340 (0.3%) of genes in pham
- Manual Annotations of this start: 1 of 265
- Called 100.0% of time when present
- Phage (with cluster) where this start called: Phinky_27 (EG),

Start 78:

- Found in 61 of 340 (17.9%) of genes in pham
- Manual Annotations of this start: 40 of 265
- Called 95.1% of time when present
- Phage (with cluster) where this start called: Altheas_22 (EG), AluminumJesus_18 (EG), BabyDotz_20 (EG), BiggityBass_6 (DR), Blab_18 (EG), BruhMoment_17 (AP3), Casend_22 (EG), DogYard_20 (AP2), DonaldDuck_21 (EG), EverythinBagel_21 (EG), Fizzles_21 (EG), Forrestell_17 (AP2), FrankDeliGuy_19 (EG), Fransoyer_22 (EG), Gazebo_20 (EG), Grassboy_22 (EG), Hyperion_19 (EG), Jehoshaphat_23 (EG), Judebell_23 (EG), Kubulix_21 (AP2), Kyva_23 (EG), Llemily_21 (EG), Lonelysoil_20 (EG), Mashley_18 (EG), MellowYellow_18 (AP2), MorillMayhem_19 (EG), Namago_21 (EG), Nike_21 (EG), NyleyClemson_18 (AP2), Odyssey395_23 (AP2), Ollypop_17 (AP2), Phabia_21 (EG), Pointis_21 (AP2), Pureglobe5_23 (AP2), Quammi_19 (EG), Ranunculus_16 (AP), RazzB_16 (AP2), Rizwana_15 (AP1), RomansRevenge_12 (singleton), Rowlf_17 (EG), RubyRalph_22 (EG), Rudy_19 (EG), SadLad_23 (EG), SallyK_22 (EG), Sillytadpoles_21 (EG), Squash_23 (EG), Statler_22 (EG), StrawberryJamm_23 (EG), Sunfish_24 (singleton), Tank_16 (AP1), Teehee_22 (EG), Tissue_20 (EG), Viceroy_20 (EG), Wayne3_22 (EG), Wheelie_20 (EG), Wilde_16 (AP1), Zagie_21 (EG), Zhafia_24 (EG),

Start 79:

- Found in 1 of 340 (0.3%) of genes in pham

- Manual Annotations of this start: 1 of 265
- Called 100.0% of time when present
- Phage (with cluster) where this start called: Evaa_8 (DR),

Start 80:

- Found in 76 of 340 (22.4%) of genes in pham
- Manual Annotations of this start: 48 of 265
- Called 75.0% of time when present
- Phage (with cluster) where this start called: Abinghost_10 (B3), Akoma_10 (B3), Athena_11 (B3), Audrey_10 (B3), Baloo_10 (B3), Beagle_22 (AP2), Ben11_9 (B3), Bernardo_10 (B3), Briakila_10 (B3), Casbah_9 (B3), ChaChing_10 (B3), Chalmers_10 (B3), Chandler_10 (B3), Chentzyk_9 (B3), Coldpizza_8 (DR), Compostia_10 (B3), Corofin_10 (B3), Daisy_10 (B3), Deenasa_10 (B3), Devonte_10 (B3), Gadget_11 (B3), Gervas_10 (B3), GlenHope_11 (B3), Glubnar_10 (B3), Halfpint_9 (B3), HarveySr_10 (B3), Heathcliff_10 (B3), Jackstina_9 (B3), Kamiyu_10 (B3), Kronus_9 (B3), LestyG_10 (B3), Marley1013_10 (B3), MmasiCarm_10 (B3), Mortcellus_9 (B3), Morty007_10 (B3), NHagos_7 (DR), Neos5_10 (B3), Nozo_10 (B3), Obutu_10 (B3), OrangeOswald_10 (B3), Phaedrus_9 (B3), Phayeta_10 (B3), Philly_9 (B3), Phlyer_10 (B3), Pipefish_10 (B3), RagingRooster_10 (B3), Rita1961_10 (B3), RomaT_10 (B3), SilentRX_17 (AP4), SlippinJimmy_10 (B3), SwainyDoc_10 (B3), SynergyX_10 (B3), TPA2_16 (singleton), TinyTerror_10 (B3), Tydolla_10 (B3), Yahalom_10 (B3), Yinz_10 (B3),

Start 82:

- Found in 57 of 340 (16.8%) of genes in pham
- Manual Annotations of this start: 7 of 265
- Called 15.8% of time when present
- Phage (with cluster) where this start called: AnarQue_9 (DR), CaiB_9 (DR), CharlottesWeb_7 (DR), CloverMinnie_9 (DR), MakoManhole_9 (DR), MossRose_9 (DR), Wooper_9 (DR), Yago84_6 (DR), Yeshua_9 (DR),

Start 85:

- Found in 2 of 340 (0.6%) of genes in pham
- Manual Annotations of this start: 1 of 265
- Called 50.0% of time when present
- Phage (with cluster) where this start called: AWGoat_16 (AP4),

Start 86:

- Found in 82 of 340 (24.1%) of genes in pham
- Manual Annotations of this start: 50 of 265
- Called 70.7% of time when present
- Phage (with cluster) where this start called: APunk_14 (DE4), Abblin_13 (DE4), Angelicage_11 (DE1), Ashertheman_11 (DE1), Baddon_11 (DE1), Barsten_12 (DE1), Baumdotcom_11 (DE1), Belphegor_8 (DE), Bibwit_11 (DE1), Bizzy_12 (DE1), BobBob_9 (DE1), ChadMasterC_11 (DE1), Charming_9 (DE1), Chickadee_12 (DE3), Delrey21_13 (DE4), Dextert_13 (DE3), DoctorFroggo_13 (DE4), EMoore_6 (DE2), EdmundFerry_11 (DE3), Flatwoods_12 (DE1), Fosterous_9 (DE1), GTE6_13 (DE3), Gaea_11 (DE1), Galadriel_13 (DE1), Hans_14 (DE2), Inspectinfecti_13 (DE2), JKSyngboy_10 (DE1), Jabberwocky_10 (DE1), Kamashten_12 (DE1), Kewpiedoll_12 (DE1), Kroos_11 (DE1), Kwekel_12 (DE3), LilHam_9 (DE1), Love_13 (DE1), MoontowerMania_10 (DE1), Natkenzie_13 (DE4), Nordenberg_6 (DE1), RoadKill_10 (DE3), Rofo_11 (DE1), Sampson_13 (DE4), Sanjuju_10 (DE1), SchottB_10 (DE1), Scioto_13 (DE4), Sedona_12 (DE1), Sitar_12 (DE1), StorminNorm_11 (DE1),

Stultus_11 (DE1), Tangerine_11 (DE1), Tardus_13 (DE4), Thing3_12 (DE1), Tiamoceli_13 (DE3), Twonlo_10 (DE3), Verity_13 (DE4), ViaConlectus_13 (DE4), Vivi2_10 (DE1), YorkOnyx_11 (DE1), Zipp_13 (DE4), Zitch_14 (DE4),

Start 87:

- Found in 37 of 340 (10.9%) of genes in pham
- Manual Annotations of this start: 32 of 265
- Called 100.0% of time when present
- Phage (with cluster) where this start called: Allegro_11 (B2), Arbiter_11 (B2), Ares_11 (B2), Bananafish_11 (B2), Blocker23_11 (B2), Boyle_11 (B2), Brownie5_11 (B2), Calamitous_11 (B2), Coffee_11 (B2), Eaglehorse_11 (B2), Faze9_11 (B2), FrenchFry_11 (B2), Glass_11 (B2), Godines_11 (B2), Hedgerow_11 (B2), Holeinone_11 (B2), ItsyBitsy1_11 (B2), Kaleb_11 (B2), Kheth_11 (B2), Kolhan_11 (B2), Lars_11 (B2), Laurie_11 (B2), Lephleur_11 (B2), LilSmirk_11 (B2), LizLemon_11 (B2), MasterPo_11 (B2), Opia_11 (B2), Phantasmagoria_11 (B2), Qyrzula_11 (B2), Rhinoforte_11 (B2), Rosebush_11 (B2), Sabella_11 (B2), TA17A_11 (B2), Tinciduntolum_12 (B2), Tres_11 (B2), Vic9_12 (B2), West99_11 (B2),

Start 88:

- Found in 12 of 340 (3.5%) of genes in pham
- Manual Annotations of this start: 9 of 265
- Called 75.0% of time when present
- Phage (with cluster) where this start called: AnClar_6 (DR), Axumite_7 (DR), Fresco_7 (DR), Ligma_7 (DR), LittleMunchkin_8 (DR), Mariokart_7 (DR), Shatter_7 (DR), Sisko_6 (DR), Sour_10 (DR),

Start 89:

- Found in 2 of 340 (0.6%) of genes in pham
- No Manual Annotations of this start.
- Called 50.0% of time when present
- Phage (with cluster) where this start called: Pine5_09 (singleton),

Start 91:

- Found in 1 of 340 (0.3%) of genes in pham
- Manual Annotations of this start: 1 of 265
- Called 100.0% of time when present
- Phage (with cluster) where this start called: TurkishDelight_10 (singleton),

Start 92:

- Found in 64 of 340 (18.8%) of genes in pham
- Manual Annotations of this start: 21 of 265
- Called 43.8% of time when present
- Phage (with cluster) where this start called: Abt2graduatex2_9 (BG), Affeca_11 (DE1), Ailee_11 (DE1), Asis_9 (BG), BabyGotBac_9 (BG), BayC_9 (BG), Brandonk123_14 (DE1), Derg_9 (DE1), Fitzgerald_10 (DE1), FuegoCuervo_15 (DE1), Geodirt_11 (DE1), Gustavo_11 (DE1), Keitabear_12 (DE1), Kwobi_11 (DE1), Lennon_12 (DE1), Maih_9 (BG), McKinley_12 (DE1), Mischief19_10 (BG), Pumpnickel_79 (GD4), RainyPolka_9 (BG), Ribeye_12 (DE1), Salete_9 (BG), Saronaya_11 (DE1), Shivanishola_11 (DE1), TP1604_9 (BG), Tycho_11 (DE1), Xkcd426_10 (BG), YDN12_10 (BG),

Start 93:

- Found in 21 of 340 (6.2%) of genes in pham
- Manual Annotations of this start: 5 of 265
- Called 100.0% of time when present
- Phage (with cluster) where this start called: A3Wally_81 (GD1), Atuin_72 (FC), Bloom_79 (FC), Cece_65 (GD3), Chilliams_72 (FC), Dodo_81 (GD1), DunneganBoMo_68 (FC), Ellewin_66 (FC), GoldenEssence_64 (FC), KSunshine22_69 (FC), LeoJr_74 (FC), Mimi_82 (FC), Patbob_75 (FC), PauloDiaboli_81 (GD1), Phrampa_69 (FC), Racecar_76 (FC), ReginaGlobina_74 (FC), Rockabye_77 (FC), SJReid_80 (FC), Talia1610_75 (FC), WaddleDee_68 (FC),

Start 94:

- Found in 41 of 340 (12.1%) of genes in pham
- Manual Annotations of this start: 29 of 265
- Called 80.5% of time when present
- Phage (with cluster) where this start called: Arri_12 (DC1), Barb_11 (DC1), CherryCola_13 (DC1), ClamChowder_11 (DC1), Clown_15 (DC2), CoveyB_11 (DC1), Danyall_11 (DC1), Evamon_11 (DC1), Fireball_12 (DC1), Fugax_11 (DC1), Gezellig_11 (DC1), Halo3_12 (DC1), Jambalaya_11 (DC1), KimmyK_11 (DC1), Lilbeanie_12 (DE5), Mutzi_11 (DC1), Nubi_11 (DC1), Phlop_11 (DC1), PinkCoffee_11 (DC1), Portcullis_11 (DC1), PullumCavea_11 (DC1), RogerDodger_12 (DC1), Salvador_11 (DC1), Savbucketdawg_11 (DC1), Shinji_11 (DC1), SmokingBunny_11 (DC1), TillyBobJoe_11 (DC1), Togo_11 (DC1), Twister6_11 (DC1), Valary_12 (DC1), VanDeWege_12 (DC1), Wizard_11 (DC1), YungMoney_11 (DC1),

Start 96:

- Found in 49 of 340 (14.4%) of genes in pham
- Manual Annotations of this start: 2 of 265
- Called 4.1% of time when present
- Phage (with cluster) where this start called: Big4_70 (GD2), Zooman_66 (GD2),

Summary by clusters:

There are 24 clusters represented in this pham: GD1, singleton, BG, GD4, AP2, AP3, AP1, GD2, AP4, FC, GD3, DR, DE, EG, AP, DC2, DC1, DE1, DE2, DE3, DE4, DE5, B2, B3,

Info for manual annotations of cluster AP:

- Start number 78 was manually annotated 1 time for cluster AP.

Info for manual annotations of cluster AP1:

- Start number 78 was manually annotated 3 times for cluster AP1.

Info for manual annotations of cluster AP2:

- Start number 78 was manually annotated 4 times for cluster AP2.
- Start number 80 was manually annotated 1 time for cluster AP2.

Info for manual annotations of cluster AP3:

- Start number 78 was manually annotated 1 time for cluster AP3.

Info for manual annotations of cluster AP4:

- Start number 80 was manually annotated 1 time for cluster AP4.
- Start number 85 was manually annotated 1 time for cluster AP4.

Info for manual annotations of cluster B2:

- Start number 87 was manually annotated 32 times for cluster B2.

Info for manual annotations of cluster B3:

- Start number 80 was manually annotated 45 times for cluster B3.

Info for manual annotations of cluster BG:

- Start number 92 was manually annotated 10 times for cluster BG.

Info for manual annotations of cluster DC1:

- Start number 64 was manually annotated 1 time for cluster DC1.
- Start number 94 was manually annotated 27 times for cluster DC1.

Info for manual annotations of cluster DC2:

- Start number 94 was manually annotated 1 time for cluster DC2.

Info for manual annotations of cluster DE1:

- Start number 72 was manually annotated 2 times for cluster DE1.
- Start number 74 was manually annotated 1 time for cluster DE1.
- Start number 86 was manually annotated 31 times for cluster DE1.
- Start number 92 was manually annotated 10 times for cluster DE1.

Info for manual annotations of cluster DE2:

- Start number 57 was manually annotated 5 times for cluster DE2.
- Start number 86 was manually annotated 3 times for cluster DE2.

Info for manual annotations of cluster DE3:

- Start number 86 was manually annotated 7 times for cluster DE3.

Info for manual annotations of cluster DE4:

- Start number 86 was manually annotated 9 times for cluster DE4.

Info for manual annotations of cluster DE5:

- Start number 94 was manually annotated 1 time for cluster DE5.

Info for manual annotations of cluster DR:

- Start number 78 was manually annotated 1 time for cluster DR.
- Start number 79 was manually annotated 1 time for cluster DR.
- Start number 80 was manually annotated 1 time for cluster DR.
- Start number 82 was manually annotated 7 times for cluster DR.
- Start number 88 was manually annotated 9 times for cluster DR.

Info for manual annotations of cluster EG:

- Start number 73 was manually annotated 8 times for cluster EG.
- Start number 76 was manually annotated 1 time for cluster EG.
- Start number 78 was manually annotated 29 times for cluster EG.

Info for manual annotations of cluster FC:

- Start number 93 was manually annotated 2 times for cluster FC.

Info for manual annotations of cluster GD1:

- Start number 93 was manually annotated 2 times for cluster GD1.

Info for manual annotations of cluster GD2:

- Start number 96 was manually annotated 2 times for cluster GD2.

Info for manual annotations of cluster GD3:

- Start number 93 was manually annotated 1 time for cluster GD3.

Info for manual annotations of cluster GD4:

- Start number 92 was manually annotated 1 time for cluster GD4.

Gene Information:

Gene: A3Wally_81 Start: 29548, Stop: 29832, Start Num: 93

Candidate Starts for A3Wally_81:

(26, 29287), (65, 29491), (Start: 80 @29527 has 48 MA's), (Start: 93 @29548 has 5 MA's), (124, 29659), (147, 29764), (148, 29767),

Gene: APunk_14 Start: 7109, Stop: 7426, Start Num: 86

Candidate Starts for APunk_14:

(Start: 86 @7109 has 50 MA's), (103, 7151), (118, 7220), (134, 7283), (141, 7307), (153, 7349),

Gene: AWGoat_16 Start: 8424, Stop: 8723, Start Num: 85

Candidate Starts for AWGoat_16:

(6, 7521), (11, 7770), (18, 7998), (Start: 78 @8409 has 40 MA's), (Start: 80 @8412 has 48 MA's), (Start: 85 @8424 has 1 MA's), (Start: 96 @8430 has 2 MA's), (133, 8583), (157, 8667), (163, 8691),

Gene: Abblin_13 Start: 6625, Stop: 6942, Start Num: 86

Candidate Starts for Abblin_13:

(Start: 86 @6625 has 50 MA's), (103, 6667), (118, 6736), (134, 6799), (141, 6823), (153, 6865), (155, 6871),

Gene: Abinghost_10 Start: 5949, Stop: 6284, Start Num: 80

Candidate Starts for Abinghost_10:

(Start: 80 @5949 has 48 MA's), (102, 5991), (105, 6003), (108, 6018), (112, 6036), (129, 6093), (144, 6159), (149, 6180), (160, 6216), (163, 6228), (168, 6264),

Gene: Abt2graduatex2_9 Start: 7673, Stop: 8023, Start Num: 92

Candidate Starts for Abt2graduatex2_9:

(Start: 92 @7673 has 21 MA's), (109, 7733), (128, 7820), (137, 7868), (140, 7877), (161, 7952),

Gene: Affeca_11 Start: 6351, Stop: 6650, Start Num: 92

Candidate Starts for Affeca_11:

(Start: 86 @6342 has 50 MA's), (Start: 92 @6351 has 21 MA's), (103, 6381), (118, 6450), (133, 6507), (134, 6513), (139, 6531), (153, 6579),

Gene: Ailee_11 Start: 7213, Stop: 7512, Start Num: 92

Candidate Starts for Ailee_11:

(Start: 86 @7204 has 50 MA's), (Start: 92 @7213 has 21 MA's), (118, 7312), (133, 7369), (134, 7375), (139, 7393), (153, 7441),

Gene: Akoma_10 Start: 5949, Stop: 6284, Start Num: 80

Candidate Starts for Akoma_10:

(Start: 80 @5949 has 48 MA's), (102, 5991), (105, 6003), (108, 6018), (112, 6036), (129, 6093), (144, 6159), (149, 6180), (160, 6216), (163, 6228), (168, 6264),

Gene: Ali17_10 Start: 6021, Stop: 6407, Start Num: 57

Candidate Starts for Ali17_10:

(24, 5826), (27, 5856), (Start: 57 @6021 has 5 MA's), (Start: 86 @6102 has 50 MA's), (99, 6123), (118, 6207), (134, 6270), (153, 6336), (154, 6339), (161, 6363),

Gene: Allegro_11 Start: 7363, Stop: 7701, Start Num: 87

Candidate Starts for Allegro_11:

(42, 7225), (45, 7234), (58, 7282), (Start: 87 @7363 has 32 MA's), (Start: 96 @7378 has 2 MA's), (106, 7417), (112, 7444), (116, 7462), (118, 7471), (122, 7477), (123, 7480), (127, 7495), (128, 7498), (129, 7501), (155, 7606), (159, 7618), (168, 7672),

Gene: Altheas_22 Start: 8371, Stop: 8715, Start Num: 78

Candidate Starts for Altheas_22:

(25, 8140), (Start: 78 @8371 has 40 MA's), (Start: 82 @8380 has 7 MA's), (102, 8428), (146, 8614), (163, 8680), (165, 8689),

Gene: AluminumJesus_18 Start: 7735, Stop: 8079, Start Num: 78

Candidate Starts for AluminumJesus_18:

(17, 7315), (25, 7504), (Start: 78 @7735 has 40 MA's), (Start: 82 @7744 has 7 MA's), (102, 7792), (146, 7978), (163, 8044), (165, 8053),

Gene: AnClar_6 Start: 5256, Stop: 5579, Start Num: 88

Candidate Starts for AnClar_6:

(Start: 82 @5244 has 7 MA's), (Start: 88 @5256 has 9 MA's), (100, 5274), (102, 5283), (105, 5295), (106, 5301), (133, 5412), (137, 5430), (144, 5451), (167, 5550),

Gene: AnarQue_9 Start: 6416, Stop: 6754, Start Num: 82

Candidate Starts for AnarQue_9:

(43, 6293), (48, 6311), (54, 6338), (60, 6359), (63, 6371), (69, 6392), (Start: 82 @6416 has 7 MA's), (95, 6434), (102, 6455), (105, 6467), (106, 6473), (112, 6500), (135, 6599), (144, 6626), (155, 6665), (167, 6725), (170, 6740),

Gene: Angelicage_11 Start: 6771, Stop: 7079, Start Num: 86

Candidate Starts for Angelicage_11:

(Start: 86 @6771 has 50 MA's), (Start: 92 @6780 has 21 MA's), (118, 6879), (133, 6936), (134, 6942), (139, 6960), (153, 7008),

Gene: Arbiter_11 Start: 7453, Stop: 7791, Start Num: 87

Candidate Starts for Arbiter_11:

(42, 7315), (45, 7324), (58, 7372), (Start: 87 @7453 has 32 MA's), (Start: 96 @7468 has 2 MA's), (106, 7507), (112, 7534), (116, 7552), (118, 7561), (122, 7567), (123, 7570), (127, 7585), (129, 7591), (155, 7696), (159, 7708), (168, 7762),

Gene: Ares_11 Start: 7363, Stop: 7701, Start Num: 87

Candidate Starts for Ares_11:

(42, 7225), (45, 7234), (56, 7276), (58, 7282), (Start: 87 @7363 has 32 MA's), (Start: 96 @7378 has 2 MA's), (106, 7417), (112, 7444), (116, 7462), (118, 7471), (123, 7480), (127, 7495), (129, 7501), (155, 7606), (159, 7618), (168, 7672),

Gene: Arri_12 Start: 5316, Stop: 5630, Start Num: 94

Candidate Starts for Arri_12:

(Start: 64 @5253 has 1 MA's), (Start: 94 @5316 has 29 MA's), (133, 5472), (134, 5478),

Gene: Ashertheman_11 Start: 5950, Stop: 6258, Start Num: 86

Candidate Starts for Ashertheman_11:

(27, 5698), (31, 5725), (Start: 86 @5950 has 50 MA's), (Start: 92 @5959 has 21 MA's), (118, 6058), (133, 6115), (134, 6121), (153, 6187),

Gene: Asis_9 Start: 7730, Stop: 8080, Start Num: 92

Candidate Starts for Asis_9:

(Start: 92 @7730 has 21 MA's), (109, 7790), (128, 7877), (137, 7925), (143, 7940),

Gene: Athena_11 Start: 6712, Stop: 7047, Start Num: 80

Candidate Starts for Athena_11:

(Start: 80 @6712 has 48 MA's), (102, 6754), (105, 6766), (108, 6781), (112, 6799), (129, 6856), (144, 6922), (160, 6979), (163, 6991), (168, 7027),

Gene: Atuin_72 Start: 30721, Stop: 31002, Start Num: 93

Candidate Starts for Atuin_72:

(Start: 93 @30721 has 5 MA's), (115, 30805),

Gene: Audrey_10 Start: 5949, Stop: 6284, Start Num: 80

Candidate Starts for Audrey_10:

(Start: 80 @5949 has 48 MA's), (102, 5991), (105, 6003), (108, 6018), (112, 6036), (129, 6093), (144, 6159), (149, 6180), (160, 6216), (163, 6228), (168, 6264),

Gene: Axumite_7 Start: 4953, Stop: 5276, Start Num: 88

Candidate Starts for Axumite_7:

(45, 4833), (Start: 82 @4941 has 7 MA's), (Start: 88 @4953 has 9 MA's), (95, 4959), (97, 4965), (98, 4968), (100, 4971), (105, 4992), (106, 4998), (112, 5025), (118, 5052), (122, 5058), (144, 5148), (167, 5247),

Gene: BabyDotz_20 Start: 8186, Stop: 8524, Start Num: 78

Candidate Starts for BabyDotz_20:

(25, 7955), (Start: 78 @8186 has 40 MA's), (Start: 82 @8195 has 7 MA's), (100, 8234), (102, 8243), (163, 8495), (165, 8504),

Gene: BabyGotBac_9 Start: 7730, Stop: 8080, Start Num: 92

Candidate Starts for BabyGotBac_9:

(Start: 92 @7730 has 21 MA's), (109, 7790), (128, 7877), (137, 7925), (143, 7940),

Gene: Baddon_11 Start: 6660, Stop: 6968, Start Num: 86

Candidate Starts for Baddon_11:

(Start: 72 @6630 has 2 MA's), (Start: 86 @6660 has 50 MA's), (Start: 92 @6669 has 21 MA's), (104, 6705), (118, 6768), (133, 6825), (134, 6831), (153, 6897),

Gene: Bakery_12 Start: 4954, Stop: 5331, Start Num: 64

Candidate Starts for Bakery_12:

(28, 4762), (29, 4768), (38, 4834), (Start: 64 @4954 has 1 MA's), (Start: 94 @5017 has 29 MA's), (133, 5173), (134, 5179),

Gene: Baloo_10 Start: 5949, Stop: 6284, Start Num: 80

Candidate Starts for Baloo_10:

(Start: 80 @5949 has 48 MA's), (102, 5991), (105, 6003), (108, 6018), (112, 6036), (129, 6093), (144, 6159), (149, 6180), (160, 6216), (163, 6228), (168, 6264),

Gene: Bananafish_11 Start: 7363, Stop: 7701, Start Num: 87

Candidate Starts for Bananafish_11:

(42, 7225), (45, 7234), (56, 7276), (58, 7282), (Start: 87 @7363 has 32 MA's), (Start: 96 @7378 has 2 MA's), (106, 7417), (112, 7444), (116, 7462), (118, 7471), (123, 7480), (127, 7495), (129, 7501), (155, 7606), (159, 7618), (168, 7672),

Gene: Barb_11 Start: 5272, Stop: 5586, Start Num: 94

Candidate Starts for Barb_11:

(Start: 64 @5209 has 1 MA's), (Start: 94 @5272 has 29 MA's), (133, 5428), (134, 5434),

Gene: Barsten_12 Start: 6156, Stop: 6464, Start Num: 86

Candidate Starts for Barsten_12:

(35, 5964), (Start: 86 @6156 has 50 MA's), (Start: 92 @6165 has 21 MA's), (103, 6195), (118, 6264), (133, 6321), (134, 6327), (139, 6345), (153, 6393),

Gene: Baumdotcom_11 Start: 5973, Stop: 6281, Start Num: 86

Candidate Starts for Baumdotcom_11:

(27, 5721), (31, 5748), (Start: 86 @5973 has 50 MA's), (Start: 92 @5982 has 21 MA's), (118, 6081), (133, 6138), (134, 6144), (153, 6210),

Gene: BayC_9 Start: 7730, Stop: 8080, Start Num: 92

Candidate Starts for BayC_9:

(Start: 92 @7730 has 21 MA's), (109, 7790), (128, 7877), (137, 7925), (143, 7940),

Gene: Beagle_22 Start: 8934, Stop: 9242, Start Num: 80

Candidate Starts for Beagle_22:

(Start: 78 @8931 has 40 MA's), (Start: 80 @8934 has 48 MA's), (100, 8964), (133, 9105), (156, 9186), (163, 9213),

Gene: Belphegor_8 Start: 3927, Stop: 4235, Start Num: 86

Candidate Starts for Belphegor_8:

(Start: 57 @3846 has 5 MA's), (Start: 86 @3927 has 50 MA's), (99, 3951), (104, 3972), (115, 4020), (118, 4035), (134, 4098), (141, 4122), (153, 4164), (154, 4167), (161, 4191),

Gene: Ben11_9 Start: 5797, Stop: 6132, Start Num: 80

Candidate Starts for Ben11_9:

(Start: 80 @5797 has 48 MA's), (102, 5839), (105, 5851), (108, 5866), (112, 5884), (129, 5941), (144, 6007), (149, 6028), (160, 6064), (163, 6076), (168, 6112),

Gene: Bernardo_10 Start: 5977, Stop: 6312, Start Num: 80

Candidate Starts for Bernardo_10:

(Start: 80 @5977 has 48 MA's), (102, 6019), (105, 6031), (108, 6046), (112, 6064), (129, 6121), (144, 6187), (149, 6208), (160, 6244), (163, 6256), (168, 6292),

Gene: Bibwit_11 Start: 7027, Stop: 7335, Start Num: 86

Candidate Starts for Bibwit_11:

(Start: 86 @7027 has 50 MA's), (Start: 92 @7036 has 21 MA's), (103, 7066), (118, 7135), (133, 7192), (134, 7198), (139, 7216), (153, 7264),

Gene: Big4_70 Start: 28857, Stop: 29132, Start Num: 96

Candidate Starts for Big4_70:

(81, 28842), (Start: 96 @28857 has 2 MA's), (102, 28878), (133, 29007), (147, 29064), (148, 29067),

Gene: BiggityBass_6 Start: 4749, Stop: 5090, Start Num: 78

Candidate Starts for BiggityBass_6:

(Start: 78 @4749 has 40 MA's), (Start: 82 @4755 has 7 MA's), (100, 4785), (102, 4794), (104, 4803), (105, 4806), (106, 4812), (144, 4962), (167, 5061),

Gene: BirdInFrench_20 Start: 7061, Stop: 7405, Start Num: 73

Candidate Starts for BirdInFrench_20:

(39, 6932), (Start: 73 @7061 has 9 MA's), (102, 7118), (109, 7148), (130, 7226), (163, 7370), (165, 7379),

Gene: Bizzy_12 Start: 6147, Stop: 6455, Start Num: 86

Candidate Starts for Bizzy_12:

(27, 5895), (31, 5922), (Start: 86 @6147 has 50 MA's), (Start: 92 @6156 has 21 MA's), (118, 6255), (133, 6312), (134, 6318), (153, 6384),

Gene: Blab_18 Start: 7511, Stop: 7855, Start Num: 78

Candidate Starts for Blab_18:

(Start: 78 @7511 has 40 MA's), (Start: 82 @7520 has 7 MA's), (102, 7568), (146, 7754), (163, 7820), (165, 7829),

Gene: Blocker23_11 Start: 7480, Stop: 7818, Start Num: 87

Candidate Starts for Blocker23_11:

(42, 7342), (45, 7351), (58, 7399), (Start: 87 @7480 has 32 MA's), (Start: 96 @7495 has 2 MA's), (106, 7534), (112, 7561), (116, 7579), (118, 7588), (123, 7597), (127, 7612), (129, 7618), (155, 7723), (159, 7735), (168, 7789),

Gene: Bloom_79 Start: 33362, Stop: 33646, Start Num: 93

Candidate Starts for Bloom_79:

(40, 33203), (41, 33209), (46, 33221), (47, 33224), (49, 33236), (50, 33242), (52, 33245), (62, 33287), (90, 33356), (Start: 93 @33362 has 5 MA's), (99, 33380), (106, 33410), (109, 33422), (110, 33425), (128, 33491), (165, 33641),

Gene: BobBob_9 Start: 5693, Stop: 6001, Start Num: 86

Candidate Starts for BobBob_9:

(Start: 86 @5693 has 50 MA's), (Start: 92 @5702 has 21 MA's), (118, 5801), (133, 5858), (134, 5864), (139, 5882), (153, 5930),

Gene: BobRoss2024_6 Start: 4746, Stop: 5114, Start Num: 67

Candidate Starts for BobRoss2024_6:

(67, 4746), (68, 4749), (Start: 80 @4773 has 48 MA's), (102, 4818), (105, 4830), (106, 4836), (118, 4890), (122, 4896), (144, 4986), (155, 5025), (162, 5049), (167, 5085),

Gene: Boyle_11 Start: 7480, Stop: 7818, Start Num: 87

Candidate Starts for Boyle_11:

(42, 7342), (45, 7351), (56, 7393), (58, 7399), (Start: 87 @7480 has 32 MA's), (Start: 96 @7495 has 2 MA's), (106, 7534), (112, 7561), (116, 7579), (118, 7588), (123, 7597), (127, 7612), (129, 7618), (155, 7723), (159, 7735), (168, 7789),

Gene: Brandonk123_14 Start: 6849, Stop: 7148, Start Num: 92

Candidate Starts for Brandonk123_14:

(35, 6648), (Start: 86 @6840 has 50 MA's), (Start: 92 @6849 has 21 MA's), (103, 6879), (118, 6948), (133, 7005), (134, 7011), (139, 7029), (153, 7077),

Gene: Briakila_10 Start: 6738, Stop: 7073, Start Num: 80

Candidate Starts for Briakila_10:

(Start: 80 @6738 has 48 MA's), (102, 6780), (105, 6792), (108, 6807), (112, 6825), (129, 6882), (144, 6948), (149, 6969), (160, 7005), (163, 7017), (168, 7053),

Gene: Brownie5_11 Start: 7480, Stop: 7818, Start Num: 87

Candidate Starts for Brownie5_11:

(42, 7342), (45, 7351), (56, 7393), (58, 7399), (Start: 87 @7480 has 32 MA's), (Start: 96 @7495 has 2 MA's), (106, 7534), (112, 7561), (116, 7579), (118, 7588), (123, 7597), (127, 7612), (129, 7618), (155, 7723), (159, 7735), (168, 7789),

Gene: BruhMoment_17 Start: 8281, Stop: 8610, Start Num: 78

Candidate Starts for BruhMoment_17:

(66, 8251), (Start: 78 @8281 has 40 MA's), (114, 8398), (116, 8407), (163, 8584),

Gene: CaiB_9 Start: 6416, Stop: 6754, Start Num: 82

Candidate Starts for CaiB_9:

(43, 6293), (48, 6311), (51, 6326), (54, 6338), (60, 6359), (63, 6371), (69, 6392), (Start: 82 @6416 has 7 MA's), (95, 6434), (102, 6455), (105, 6467), (106, 6473), (112, 6500), (135, 6599), (144, 6626), (155, 6665), (167, 6725), (170, 6740),

Gene: Calamitous_11 Start: 7363, Stop: 7701, Start Num: 87

Candidate Starts for Calamitous_11:

(42, 7225), (45, 7234), (56, 7276), (58, 7282), (Start: 87 @7363 has 32 MA's), (Start: 96 @7378 has 2 MA's), (106, 7417), (112, 7444), (116, 7462), (118, 7471), (122, 7477), (123, 7480), (127, 7495), (129, 7501), (155, 7606), (159, 7618), (168, 7672),

Gene: CandC_19 Start: 6747, Stop: 7091, Start Num: 73

Candidate Starts for CandC_19:

(14, 6162), (17, 6306), (39, 6618), (Start: 73 @6747 has 9 MA's), (Start: 94 @6777 has 29 MA's), (Start: 96 @6783 has 2 MA's), (102, 6804), (109, 6834), (130, 6912), (146, 6990), (163, 7056), (165, 7065),

Gene: Casbah_9 Start: 5798, Stop: 6133, Start Num: 80

Candidate Starts for Casbah_9:

(Start: 80 @5798 has 48 MA's), (102, 5840), (105, 5852), (108, 5867), (112, 5885), (129, 5942), (144, 6008), (149, 6029), (160, 6065), (163, 6077), (168, 6113),

Gene: Casend_22 Start: 8510, Stop: 8848, Start Num: 78

Candidate Starts for Casend_22:

(7, 7655), (12, 7904), (14, 7949), (25, 8279), (Start: 78 @8510 has 40 MA's), (Start: 82 @8519 has 7 MA's), (102, 8567), (163, 8819), (165, 8828),

Gene: Cece_65 Start: 27218, Stop: 27502, Start Num: 93

Candidate Starts for Cece_65:

(90, 27212), (Start: 93 @27218 has 5 MA's), (113, 27296), (147, 27434), (148, 27437), (152, 27449),

Gene: ChaChing_10 Start: 5964, Stop: 6299, Start Num: 80

Candidate Starts for ChaChing_10:

(Start: 80 @5964 has 48 MA's), (102, 6006), (105, 6018), (108, 6033), (112, 6051), (129, 6108), (144, 6174), (149, 6195), (160, 6231), (163, 6243), (168, 6279),

Gene: ChadMasterC_11 Start: 6428, Stop: 6736, Start Num: 86

Candidate Starts for ChadMasterC_11:

(35, 6236), (Start: 86 @6428 has 50 MA's), (Start: 92 @6437 has 21 MA's), (103, 6467), (118, 6536), (133, 6593), (134, 6599), (139, 6617), (153, 6665),

Gene: Chalmers_10 Start: 6739, Stop: 7074, Start Num: 80

Candidate Starts for Chalmers_10:

(Start: 80 @6739 has 48 MA's), (102, 6781), (105, 6793), (108, 6808), (112, 6826), (129, 6883), (144, 6949), (149, 6970), (160, 7006), (163, 7018), (168, 7054),

Gene: Chandler_10 Start: 6712, Stop: 7047, Start Num: 80

Candidate Starts for Chandler_10:

(Start: 80 @6712 has 48 MA's), (102, 6754), (105, 6766), (108, 6781), (112, 6799), (129, 6856), (144, 6922), (149, 6943), (160, 6979), (163, 6991), (168, 7027),

Gene: CharlottesWeb_7 Start: 4948, Stop: 5283, Start Num: 82

Candidate Starts for CharlottesWeb_7:

(Start: 82 @4948 has 7 MA's), (Start: 88 @4960 has 9 MA's), (95, 4966), (97, 4972), (100, 4978), (102, 4987), (104, 4996), (105, 4999), (106, 5005), (117, 5056), (122, 5065), (138, 5137), (167, 5254),

Gene: Charming_9 Start: 5695, Stop: 6003, Start Num: 86

Candidate Starts for Charming_9:

(Start: 72 @5665 has 2 MA's), (Start: 86 @5695 has 50 MA's), (Start: 92 @5704 has 21 MA's), (118, 5803), (133, 5860), (134, 5866), (139, 5884), (153, 5932),

Gene: Chentzyk_9 Start: 5825, Stop: 6160, Start Num: 80

Candidate Starts for Chentzyk_9:

(Start: 80 @5825 has 48 MA's), (102, 5867), (105, 5879), (108, 5894), (112, 5912), (129, 5969), (144, 6035), (149, 6056), (160, 6092), (163, 6104), (168, 6140),

Gene: CherryCola_13 Start: 5508, Stop: 5822, Start Num: 94

Candidate Starts for CherryCola_13:

(20, 5157), (Start: 64 @5445 has 1 MA's), (Start: 94 @5508 has 29 MA's), (133, 5664), (134, 5670),

Gene: Chickadee_12 Start: 5433, Stop: 5771, Start Num: 86

Candidate Starts for Chickadee_12:

(70, 5397), (Start: 86 @5433 has 50 MA's), (99, 5460), (101, 5466), (106, 5490), (125, 5568), (134, 5634), (153, 5700), (161, 5727),

Gene: Chilliams_72 Start: 33749, Stop: 34030, Start Num: 93

Candidate Starts for Chilliams_72:

(Start: 93 @33749 has 5 MA's), (110, 33812), (115, 33836), (138, 33926), (165, 34025),

Gene: ClamChowder_11 Start: 5272, Stop: 5586, Start Num: 94

Candidate Starts for ClamChowder_11:

(Start: 64 @5209 has 1 MA's), (Start: 94 @5272 has 29 MA's), (133, 5428), (134, 5434),

Gene: CloverMinnie_9 Start: 6416, Stop: 6754, Start Num: 82

Candidate Starts for CloverMinnie_9:

(43, 6293), (48, 6311), (54, 6338), (60, 6359), (63, 6371), (69, 6392), (Start: 82 @6416 has 7 MA's), (95, 6434), (102, 6455), (105, 6467), (106, 6473), (112, 6500), (135, 6599), (144, 6626), (155, 6665), (167, 6725), (170, 6740),

Gene: Clown_15 Start: 8549, Stop: 8863, Start Num: 94

Candidate Starts for Clown_15:

(Start: 88 @8540 has 9 MA's), (Start: 94 @8549 has 29 MA's), (106, 8594), (133, 8705),

Gene: Coffee_11 Start: 7480, Stop: 7818, Start Num: 87

Candidate Starts for Coffee_11:

(42, 7342), (45, 7351), (56, 7393), (58, 7399), (Start: 87 @7480 has 32 MA's), (Start: 96 @7495 has 2 MA's), (106, 7534), (112, 7561), (116, 7579), (118, 7588), (123, 7597), (127, 7612), (129, 7618), (155, 7723), (159, 7735), (168, 7789),

Gene: Coldpizza_8 Start: 6855, Stop: 7208, Start Num: 80

Candidate Starts for Coldpizza_8:

(Start: 80 @6855 has 48 MA's), (Start: 82 @6861 has 7 MA's), (98, 6888), (105, 6912), (117, 6969), (128, 6999), (139, 7053), (144, 7068), (167, 7167),

Gene: Compostia_10 Start: 5957, Stop: 6292, Start Num: 80

Candidate Starts for Compostia_10:

(Start: 80 @5957 has 48 MA's), (102, 5999), (105, 6011), (108, 6026), (112, 6044), (129, 6101), (144, 6167), (149, 6188), (160, 6224), (163, 6236), (168, 6272),

Gene: Corofin_10 Start: 5974, Stop: 6309, Start Num: 80

Candidate Starts for Corofin_10:

(Start: 80 @5974 has 48 MA's), (102, 6016), (105, 6028), (108, 6043), (112, 6061), (129, 6118), (144, 6184), (149, 6205), (160, 6241), (163, 6253), (168, 6289),

Gene: CoveyB_11 Start: 5144, Stop: 5458, Start Num: 94

Candidate Starts for CoveyB_11:

(Start: 64 @5081 has 1 MA's), (Start: 94 @5144 has 29 MA's), (133, 5300), (134, 5306),

Gene: Daisy_10 Start: 5952, Stop: 6287, Start Num: 80

Candidate Starts for Daisy_10:

(Start: 80 @5952 has 48 MA's), (102, 5994), (105, 6006), (108, 6021), (112, 6039), (129, 6096), (144, 6162), (149, 6183), (160, 6219), (163, 6231), (168, 6267),

Gene: Danyall_11 Start: 5144, Stop: 5458, Start Num: 94

Candidate Starts for Danyall_11:

(Start: 64 @5081 has 1 MA's), (Start: 94 @5144 has 29 MA's), (133, 5300), (134, 5306),

Gene: Deenasa_10 Start: 6712, Stop: 7047, Start Num: 80

Candidate Starts for Deenasa_10:

(Start: 80 @6712 has 48 MA's), (102, 6754), (105, 6766), (108, 6781), (112, 6799), (129, 6856), (144, 6922), (149, 6943), (160, 6979), (163, 6991), (168, 7027),

Gene: Delrey21_13 Start: 6898, Stop: 7215, Start Num: 86

Candidate Starts for Delrey21_13:

(Start: 86 @6898 has 50 MA's), (100, 6928), (118, 7009), (134, 7072), (139, 7090), (140, 7093), (141, 7096), (153, 7138),

Gene: Derg_9 Start: 5286, Stop: 5585, Start Num: 92

Candidate Starts for Derg_9:

(27, 5025), (31, 5052), (Start: 86 @5277 has 50 MA's), (Start: 92 @5286 has 21 MA's), (118, 5385), (133, 5442), (134, 5448), (153, 5514),

Gene: Devonte_10 Start: 5949, Stop: 6284, Start Num: 80

Candidate Starts for Devonte_10:

(Start: 80 @5949 has 48 MA's), (102, 5991), (105, 6003), (108, 6018), (112, 6036), (129, 6093), (144, 6159), (149, 6180), (160, 6216), (163, 6228), (168, 6264),

Gene: Dextert_13 Start: 5891, Stop: 6229, Start Num: 86

Candidate Starts for Dextert_13:

(70, 5855), (Start: 86 @5891 has 50 MA's), (99, 5918), (101, 5924), (106, 5948), (125, 6026), (134, 6092), (153, 6158), (161, 6185),

Gene: DoctorFroggo_13 Start: 6898, Stop: 7215, Start Num: 86

Candidate Starts for DoctorFroggo_13:

(Start: 86 @6898 has 50 MA's), (100, 6928), (118, 7009), (134, 7072), (139, 7090), (140, 7093), (141, 7096), (153, 7138),

Gene: Dodo_81 Start: 29870, Stop: 30154, Start Num: 93

Candidate Starts for Dodo_81:

(26, 29609), (65, 29813), (Start: 80 @29849 has 48 MA's), (Start: 93 @29870 has 5 MA's), (124, 29981), (147, 30086), (148, 30089),

Gene: DogYard_20 Start: 9001, Stop: 9312, Start Num: 78

Candidate Starts for DogYard_20:

(Start: 78 @9001 has 40 MA's), (Start: 80 @9004 has 48 MA's), (100, 9034), (133, 9175), (156, 9256), (163, 9283),

Gene: DonaldDuck_21 Start: 7856, Stop: 8194, Start Num: 78

Candidate Starts for DonaldDuck_21:

(7, 7001), (12, 7250), (14, 7295), (25, 7625), (Start: 78 @7856 has 40 MA's), (Start: 82 @7865 has 7 MA's), (102, 7913), (163, 8165), (165, 8174),

Gene: DunneganBoMo_68 Start: 27488, Stop: 27772, Start Num: 93

Candidate Starts for DunneganBoMo_68:

(44, 27344), (81, 27470), (90, 27482), (Start: 93 @27488 has 5 MA's), (165, 27767),

Gene: EMoore_6 Start: 4085, Stop: 4393, Start Num: 86

Candidate Starts for EMoore_6:

(Start: 57 @4004 has 5 MA's), (Start: 86 @4085 has 50 MA's), (99, 4109), (134, 4256), (141, 4280), (153, 4322), (154, 4325), (161, 4349),

Gene: Eaglehorse_11 Start: 7381, Stop: 7719, Start Num: 87

Candidate Starts for Eaglehorse_11:

(42, 7243), (45, 7252), (56, 7294), (58, 7300), (Start: 87 @7381 has 32 MA's), (Start: 96 @7396 has 2 MA's), (106, 7435), (112, 7462), (116, 7480), (118, 7489), (123, 7498), (127, 7513), (129, 7519), (155, 7624), (159, 7636), (168, 7690),

Gene: EdmundFerry_11 Start: 5448, Stop: 5786, Start Num: 86

Candidate Starts for EdmundFerry_11:

(70, 5412), (Start: 86 @5448 has 50 MA's), (99, 5475), (101, 5481), (106, 5505), (125, 5583), (134, 5649), (153, 5715), (161, 5742),

Gene: Ellewin_66 Start: 27215, Stop: 27499, Start Num: 93

Candidate Starts for Ellewin_66:

(44, 27071), (81, 27197), (90, 27209), (Start: 93 @27215 has 5 MA's), (165, 27494),

Gene: Evaa_8 Start: 6248, Stop: 6592, Start Num: 79

Candidate Starts for Evaa_8:

(Start: 79 @6248 has 1 MA's), (100, 6284), (102, 6293), (105, 6305), (106, 6311), (112, 6338), (116, 6356), (118, 6365), (128, 6392), (129, 6395), (133, 6422), (135, 6434), (143, 6455), (144, 6461), (162, 6524), (167, 6560),

Gene: Evamon_11 Start: 5125, Stop: 5439, Start Num: 94

Candidate Starts for Evamon_11:

(Start: 64 @5062 has 1 MA's), (Start: 94 @5125 has 29 MA's), (133, 5281), (134, 5287),

Gene: EverythinBagel_21 Start: 8257, Stop: 8601, Start Num: 78

Candidate Starts for EverythinBagel_21:

(Start: 78 @8257 has 40 MA's), (Start: 82 @8266 has 7 MA's), (100, 8305), (102, 8314), (146, 8500), (163, 8566), (165, 8575),

Gene: Faze9_11 Start: 7480, Stop: 7818, Start Num: 87

Candidate Starts for Faze9_11:

(42, 7342), (45, 7351), (56, 7393), (58, 7399), (Start: 87 @7480 has 32 MA's), (Start: 96 @7495 has 2 MA's), (106, 7534), (112, 7561), (116, 7579), (118, 7588), (123, 7597), (127, 7612), (129, 7618), (155, 7723), (159, 7735), (168, 7789),

Gene: Fireball_12 Start: 5251, Stop: 5565, Start Num: 94

Candidate Starts for Fireball_12:

(Start: 64 @5188 has 1 MA's), (Start: 94 @5251 has 29 MA's), (133, 5407), (134, 5413),

Gene: Fitzgerald_10 Start: 6630, Stop: 6929, Start Num: 92

Candidate Starts for Fitzgerald_10:

(Start: 86 @6621 has 50 MA's), (Start: 92 @6630 has 21 MA's), (118, 6729), (133, 6786), (134, 6792), (139, 6810), (153, 6858),

Gene: Fizzles_21 Start: 7811, Stop: 8155, Start Num: 78

Candidate Starts for Fizzles_21:

(Start: 78 @7811 has 40 MA's), (102, 7868), (146, 8054), (163, 8120), (165, 8129),

Gene: Flatwoods_12 Start: 6151, Stop: 6459, Start Num: 86

Candidate Starts for Flatwoods_12:

(21, 5824), (Start: 86 @6151 has 50 MA's), (Start: 92 @6160 has 21 MA's), (118, 6259), (133, 6316), (134, 6322), (153, 6388),

Gene: Forrestell_17 Start: 7645, Stop: 7956, Start Num: 78

Candidate Starts for Forrestell_17:

(Start: 78 @7645 has 40 MA's), (Start: 80 @7648 has 48 MA's), (100, 7678), (133, 7819), (156, 7900), (163, 7927),

Gene: Fosterous_9 Start: 5693, Stop: 6001, Start Num: 86

Candidate Starts for Fosterous_9:

(Start: 72 @5663 has 2 MA's), (Start: 86 @5693 has 50 MA's), (Start: 92 @5702 has 21 MA's), (118, 5801), (133, 5858), (134, 5864), (139, 5882), (153, 5930),

Gene: FrankDeliGuy_19 Start: 7715, Stop: 8053, Start Num: 78

Candidate Starts for FrankDeliGuy_19:

(7, 6860), (12, 7109), (25, 7484), (Start: 78 @7715 has 40 MA's), (Start: 82 @7724 has 7 MA's), (100, 7763), (102, 7772), (146, 7958), (163, 8024), (165, 8033),

Gene: Fransoyer_22 Start: 8000, Stop: 8341, Start Num: 78

Candidate Starts for Fransoyer_22:

(2, 6860), (3, 6881), (7, 7121), (12, 7370), (13, 7382), (39, 7868), (Start: 78 @8000 has 40 MA's), (102, 8057), (118, 8129), (146, 8243), (163, 8309), (164, 8312), (165, 8318),

Gene: Fregley_21 Start: 7285, Stop: 7629, Start Num: 73

Candidate Starts for Fregley_21:

(17, 6844), (39, 7156), (Start: 73 @7285 has 9 MA's), (Start: 94 @7315 has 29 MA's), (Start: 96 @7321 has 2 MA's), (102, 7342), (109, 7372), (130, 7450), (146, 7528), (163, 7594), (165, 7603),

Gene: FrenchFry_11 Start: 7480, Stop: 7818, Start Num: 87

Candidate Starts for FrenchFry_11:

(42, 7342), (45, 7351), (56, 7393), (58, 7399), (Start: 87 @7480 has 32 MA's), (Start: 96 @7495 has 2 MA's), (106, 7534), (112, 7561), (116, 7579), (118, 7588), (123, 7597), (127, 7612), (129, 7618), (155, 7723), (159, 7735), (168, 7789),

Gene: Fresco_7 Start: 4953, Stop: 5276, Start Num: 88

Candidate Starts for Fresco_7:

(45, 4833), (Start: 82 @4941 has 7 MA's), (Start: 88 @4953 has 9 MA's), (95, 4959), (97, 4965), (98, 4968), (100, 4971), (105, 4992), (106, 4998), (112, 5025), (118, 5052), (122, 5058), (144, 5148), (167, 5247),

Gene: FuegoCuervo_15 Start: 6452, Stop: 6751, Start Num: 92

Candidate Starts for FuegoCuervo_15:

(35, 6251), (Start: 86 @6443 has 50 MA's), (Start: 92 @6452 has 21 MA's), (118, 6551), (133, 6608), (134, 6614), (139, 6632), (153, 6680),

Gene: Fugax_11 Start: 5272, Stop: 5586, Start Num: 94

Candidate Starts for Fugax_11:

(Start: 64 @5209 has 1 MA's), (Start: 94 @5272 has 29 MA's), (133, 5428), (134, 5434),

Gene: GTE6_13 Start: 5949, Stop: 6287, Start Num: 86

Candidate Starts for GTE6_13:

(70, 5913), (Start: 86 @5949 has 50 MA's), (99, 5976), (101, 5982), (106, 6006), (125, 6084), (134, 6150), (153, 6216), (161, 6243),

Gene: Gadjet_11 Start: 5953, Stop: 6288, Start Num: 80

Candidate Starts for Gadjet_11:

(Start: 80 @5953 has 48 MA's), (102, 5995), (105, 6007), (108, 6022), (112, 6040), (129, 6097), (144, 6163), (149, 6184), (160, 6220), (163, 6232), (168, 6268),

Gene: Gaea_11 Start: 5953, Stop: 6261, Start Num: 86

Candidate Starts for Gaea_11:

(27, 5701), (31, 5728), (Start: 86 @5953 has 50 MA's), (Start: 92 @5962 has 21 MA's), (118, 6061), (133, 6118), (134, 6124), (153, 6190),

Gene: Galadriel_13 Start: 6461, Stop: 6769, Start Num: 86

Candidate Starts for Galadriel_13:

(Start: 72 @6431 has 2 MA's), (Start: 86 @6461 has 50 MA's), (Start: 92 @6470 has 21 MA's), (118, 6569), (133, 6626), (134, 6632), (139, 6650), (153, 6698),

Gene: Gazebo_20 Start: 8077, Stop: 8421, Start Num: 78

Candidate Starts for Gazebo_20:

(7, 7222), (12, 7471), (17, 7657), (25, 7846), (Start: 78 @8077 has 40 MA's), (Start: 82 @8086 has 7 MA's), (102, 8134), (146, 8320), (163, 8386), (165, 8395),

Gene: Geodirt_11 Start: 6477, Stop: 6776, Start Num: 92

Candidate Starts for Geodirt_11:

(35, 6276), (Start: 86 @6468 has 50 MA's), (Start: 92 @6477 has 21 MA's), (103, 6507), (118, 6576), (133, 6633), (134, 6639), (139, 6657), (153, 6705),

Gene: Gervas_10 Start: 5944, Stop: 6279, Start Num: 80

Candidate Starts for Gervas_10:

(Start: 80 @5944 has 48 MA's), (102, 5986), (105, 5998), (108, 6013), (112, 6031), (129, 6088), (144, 6154), (149, 6175), (160, 6211), (163, 6223), (168, 6259),

Gene: Gezellig_11 Start: 5251, Stop: 5565, Start Num: 94

Candidate Starts for Gezellig_11:

(Start: 64 @5188 has 1 MA's), (Start: 94 @5251 has 29 MA's), (133, 5407), (134, 5413),

Gene: Glass_11 Start: 7480, Stop: 7818, Start Num: 87

Candidate Starts for Glass_11:

(42, 7342), (45, 7351), (56, 7393), (58, 7399), (Start: 87 @7480 has 32 MA's), (Start: 96 @7495 has 2 MA's), (106, 7534), (112, 7561), (116, 7579), (118, 7588), (123, 7597), (127, 7612), (129, 7618), (155, 7723), (159, 7735), (168, 7789),

Gene: GlenHope_11 Start: 5963, Stop: 6298, Start Num: 80

Candidate Starts for GlenHope_11:

(Start: 80 @5963 has 48 MA's), (102, 6005), (105, 6017), (108, 6032), (112, 6050), (129, 6107), (144, 6173), (149, 6194), (160, 6230), (163, 6242), (168, 6278),

Gene: Glubnar_10 Start: 5953, Stop: 6288, Start Num: 80

Candidate Starts for Glubnar_10:

(Start: 80 @5953 has 48 MA's), (102, 5995), (105, 6007), (108, 6022), (112, 6040), (129, 6097), (144, 6163), (160, 6220), (163, 6232), (168, 6268),

Gene: Godines_11 Start: 7363, Stop: 7701, Start Num: 87

Candidate Starts for Godines_11:

(42, 7225), (45, 7234), (58, 7282), (Start: 87 @7363 has 32 MA's), (Start: 96 @7378 has 2 MA's), (106, 7417), (112, 7444), (116, 7462), (118, 7471), (123, 7480), (127, 7495), (129, 7501), (155, 7606), (159, 7618), (168, 7672),

Gene: GoldenEssence_64 Start: 27155, Stop: 27439, Start Num: 93

Candidate Starts for GoldenEssence_64:

(40, 26996), (41, 27002), (46, 27014), (47, 27017), (49, 27029), (50, 27035), (52, 27038), (Start: 93 @27155 has 5 MA's), (106, 27203), (110, 27218), (128, 27284), (165, 27434),

Gene: Grassboy_22 Start: 8532, Stop: 8870, Start Num: 78

Candidate Starts for Grassboy_22:

(Start: 78 @8532 has 40 MA's), (Start: 82 @8541 has 7 MA's), (102, 8589), (163, 8841), (165, 8850),

Gene: Gustavo_11 Start: 5959, Stop: 6258, Start Num: 92

Candidate Starts for Gustavo_11:

(27, 5698), (31, 5725), (Start: 86 @5950 has 50 MA's), (Start: 92 @5959 has 21 MA's), (118, 6058), (133, 6115), (134, 6121), (153, 6187),

Gene: Halfpint_9 Start: 5798, Stop: 6133, Start Num: 80

Candidate Starts for Halfpint_9:

(Start: 80 @5798 has 48 MA's), (102, 5840), (105, 5852), (108, 5867), (112, 5885), (129, 5942), (144, 6008), (149, 6029), (160, 6065), (163, 6077), (168, 6113),

Gene: Halo3_12 Start: 5583, Stop: 5888, Start Num: 94

Candidate Starts for Halo3_12:

(20, 5232), (Start: 64 @5520 has 1 MA's), (Start: 94 @5583 has 29 MA's), (133, 5739), (134, 5745),

Gene: Hans_14 Start: 6642, Stop: 6947, Start Num: 86

Candidate Starts for Hans_14:

(Start: 57 @6561 has 5 MA's), (Start: 86 @6642 has 50 MA's), (99, 6663), (118, 6747), (134, 6810), (141, 6834), (153, 6876), (154, 6879), (161, 6903),

Gene: HarveySr_10 Start: 5950, Stop: 6285, Start Num: 80

Candidate Starts for HarveySr_10:

(Start: 80 @5950 has 48 MA's), (102, 5992), (105, 6004), (108, 6019), (112, 6037), (129, 6094), (144, 6160), (149, 6181), (160, 6217), (163, 6229), (168, 6265),

Gene: Heathcliff_10 Start: 5944, Stop: 6279, Start Num: 80

Candidate Starts for Heathcliff_10:

(Start: 80 @5944 has 48 MA's), (102, 5986), (105, 5998), (108, 6013), (112, 6031), (129, 6088), (144, 6154), (149, 6175), (160, 6211), (163, 6223), (168, 6259),

Gene: Hedgerow_11 Start: 7462, Stop: 7800, Start Num: 87

Candidate Starts for Hedgerow_11:

(42, 7324), (45, 7333), (56, 7375), (58, 7381), (Start: 87 @7462 has 32 MA's), (Start: 96 @7477 has 2 MA's), (106, 7516), (112, 7543), (116, 7561), (118, 7570), (123, 7579), (127, 7594), (129, 7600), (155, 7705), (159, 7717), (168, 7771),

Gene: Holeinone_11 Start: 7362, Stop: 7700, Start Num: 87

Candidate Starts for Holeinone_11:

(Start: 87 @7362 has 32 MA's), (Start: 96 @7377 has 2 MA's), (106, 7416), (112, 7443), (116, 7461), (118, 7470), (122, 7476), (123, 7479), (127, 7494), (128, 7497), (129, 7500), (155, 7605), (159, 7617), (168, 7671),

Gene: Hyperion_19 Start: 7780, Stop: 8124, Start Num: 78

Candidate Starts for Hyperion_19:

(7, 6925), (12, 7174), (25, 7549), (Start: 78 @7780 has 40 MA's), (Start: 82 @7789 has 7 MA's), (102, 7837), (163, 8089), (165, 8098),

Gene: Inspectinfecti_13 Start: 7159, Stop: 7464, Start Num: 86

Candidate Starts for Inspectinfecti_13:

(24, 6883), (27, 6913), (Start: 57 @7078 has 5 MA's), (Start: 86 @7159 has 50 MA's), (99, 7180), (118, 7264), (134, 7327), (153, 7393), (154, 7396), (161, 7420),

Gene: ItsyBitsy1_11 Start: 7354, Stop: 7692, Start Num: 87

Candidate Starts for ItsyBitsy1_11:

(42, 7216), (45, 7225), (56, 7267), (58, 7273), (Start: 87 @7354 has 32 MA's), (Start: 96 @7369 has 2 MA's), (106, 7408), (112, 7435), (116, 7453), (118, 7462), (123, 7471), (127, 7486), (129, 7492), (155, 7597), (159, 7609), (168, 7663),

Gene: JKSyngboy_10 Start: 6461, Stop: 6769, Start Num: 86

Candidate Starts for JKSyngboy_10:

(27, 6209), (31, 6236), (Start: 86 @6461 has 50 MA's), (Start: 92 @6470 has 21 MA's), (118, 6569), (133, 6626), (134, 6632), (153, 6698),

Gene: Jabberwocky_10 Start: 6623, Stop: 6931, Start Num: 86

Candidate Starts for Jabberwocky_10:

(Start: 86 @6623 has 50 MA's), (Start: 92 @6632 has 21 MA's), (118, 6731), (133, 6788), (134, 6794), (139, 6812), (153, 6860),

Gene: Jackstina_9 Start: 5866, Stop: 6201, Start Num: 80

Candidate Starts for Jackstina_9:

(Start: 80 @5866 has 48 MA's), (102, 5908), (105, 5920), (108, 5935), (112, 5953), (129, 6010), (144, 6076), (149, 6097), (160, 6133), (163, 6145), (168, 6181),

Gene: Jambalaya_11 Start: 4956, Stop: 5270, Start Num: 94

Candidate Starts for Jambalaya_11:

(Start: 94 @4956 has 29 MA's), (133, 5112), (134, 5118),

Gene: Jehoshaphat_23 Start: 8775, Stop: 9113, Start Num: 78

Candidate Starts for Jehoshaphat_23:

(7, 7920), (12, 8169), (14, 8214), (25, 8544), (Start: 78 @8775 has 40 MA's), (Start: 82 @8784 has 7 MA's), (102, 8832), (163, 9084), (165, 9093),

Gene: Judebell_23 Start: 8316, Stop: 8654, Start Num: 78

Candidate Starts for Judebell_23:

(25, 8085), (Start: 78 @8316 has 40 MA's), (Start: 82 @8325 has 7 MA's), (102, 8373), (163, 8625), (165, 8634),

Gene: KSunshine22_69 Start: 28755, Stop: 29039, Start Num: 93

Candidate Starts for KSunshine22_69:

(44, 28611), (81, 28737), (90, 28749), (Start: 93 @28755 has 5 MA's), (165, 29034),

Gene: Kaleb_11 Start: 7480, Stop: 7818, Start Num: 87

Candidate Starts for Kaleb_11:

(42, 7342), (45, 7351), (56, 7393), (58, 7399), (Start: 87 @7480 has 32 MA's), (Start: 96 @7495 has 2 MA's), (106, 7534), (112, 7561), (116, 7579), (118, 7588), (123, 7597), (127, 7612), (129, 7618), (155, 7723), (159, 7735), (168, 7789),

Gene: Kamashten_12 Start: 6782, Stop: 7090, Start Num: 86

Candidate Starts for Kamashten_12:

(Start: 72 @6752 has 2 MA's), (Start: 86 @6782 has 50 MA's), (Start: 92 @6791 has 21 MA's), (118, 6890), (133, 6947), (134, 6953), (139, 6971), (153, 7019),

Gene: Kamiyu_10 Start: 5944, Stop: 6279, Start Num: 80

Candidate Starts for Kamiyu_10:

(Start: 80 @5944 has 48 MA's), (102, 5986), (105, 5998), (108, 6013), (112, 6031), (129, 6088), (144, 6154), (149, 6175), (160, 6211), (163, 6223), (168, 6259),

Gene: Keitabear_12 Start: 7843, Stop: 8142, Start Num: 92

Candidate Starts for Keitabear_12:

(Start: 86 @7834 has 50 MA's), (Start: 92 @7843 has 21 MA's), (118, 7942), (133, 7999), (134, 8005), (139, 8023), (153, 8071),

Gene: Kelcole_19 Start: 7138, Stop: 7482, Start Num: 73

Candidate Starts for Kelcole_19:

(14, 6553), (17, 6697), (39, 7009), (Start: 73 @7138 has 9 MA's), (Start: 94 @7168 has 29 MA's), (Start: 96 @7174 has 2 MA's), (102, 7195), (109, 7225), (130, 7303), (146, 7381), (163, 7447), (165, 7456),

Gene: Kewpiedoll_12 Start: 6184, Stop: 6492, Start Num: 86

Candidate Starts for Kewpiedoll_12:

(Start: 86 @6184 has 50 MA's), (Start: 92 @6193 has 21 MA's), (103, 6223), (118, 6292), (133, 6349), (134, 6355), (139, 6373), (153, 6421),

Gene: Kheth_11 Start: 7363, Stop: 7701, Start Num: 87

Candidate Starts for Kheth_11:

(42, 7225), (45, 7234), (56, 7276), (58, 7282), (Start: 87 @7363 has 32 MA's), (Start: 96 @7378 has 2 MA's), (106, 7417), (112, 7444), (116, 7462), (118, 7471), (123, 7480), (127, 7495), (129, 7501), (155, 7606), (159, 7618), (168, 7672),

Gene: KimmyK_11 Start: 5272, Stop: 5586, Start Num: 94

Candidate Starts for KimmyK_11:

(Start: 64 @5209 has 1 MA's), (Start: 94 @5272 has 29 MA's), (133, 5428), (134, 5434),

Gene: Kithara_21 Start: 9380, Stop: 9730, Start Num: 73

Candidate Starts for Kithara_21:

(Start: 73 @9380 has 9 MA's), (102, 9440), (108, 9467), (111, 9476), (116, 9503), (117, 9509), (136, 9587), (146, 9626), (164, 9695),

Gene: Kolhan_11 Start: 7363, Stop: 7701, Start Num: 87

Candidate Starts for Kolhan_11:

(42, 7225), (45, 7234), (56, 7276), (58, 7282), (Start: 87 @7363 has 32 MA's), (Start: 96 @7378 has 2 MA's), (106, 7417), (112, 7444), (116, 7462), (118, 7471), (123, 7480), (127, 7495), (129, 7501), (155, 7606), (159, 7618), (168, 7672),

Gene: Kronus_9 Start: 6559, Stop: 6894, Start Num: 80

Candidate Starts for Kronus_9:

(Start: 80 @6559 has 48 MA's), (102, 6601), (105, 6613), (108, 6628), (112, 6646), (129, 6703), (144, 6769), (149, 6790), (160, 6826), (163, 6838), (168, 6874),

Gene: Kroos_11 Start: 6114, Stop: 6422, Start Num: 86

Candidate Starts for Kroos_11:

(27, 5862), (31, 5889), (Start: 86 @6114 has 50 MA's), (Start: 92 @6123 has 21 MA's), (118, 6222), (133, 6279), (134, 6285), (153, 6351),

Gene: Kubulix_21 Start: 9130, Stop: 9441, Start Num: 78

Candidate Starts for Kubulix_21:

(Start: 78 @9130 has 40 MA's), (Start: 80 @9133 has 48 MA's), (100, 9163), (133, 9304), (156, 9385), (163, 9412),

Gene: Kwekel_12 Start: 5442, Stop: 5780, Start Num: 86

Candidate Starts for Kwekel_12:

(Start: 64 @5388 has 1 MA's), (Start: 86 @5442 has 50 MA's), (100, 5472), (101, 5475), (118, 5553), (125, 5577), (153, 5709), (161, 5736),

Gene: Kwobi_11 Start: 5962, Stop: 6261, Start Num: 92

Candidate Starts for Kwobi_11:

(27, 5701), (31, 5728), (Start: 86 @5953 has 50 MA's), (Start: 92 @5962 has 21 MA's), (118, 6061), (133, 6118), (134, 6124), (153, 6190),

Gene: Kyva_23 Start: 8567, Stop: 8905, Start Num: 78

Candidate Starts for Kyva_23:

(Start: 78 @8567 has 40 MA's), (Start: 82 @8576 has 7 MA's), (102, 8624), (163, 8876), (165, 8885),

Gene: Lars_11 Start: 7480, Stop: 7818, Start Num: 87

Candidate Starts for Lars_11:

(42, 7342), (45, 7351), (58, 7399), (Start: 87 @7480 has 32 MA's), (Start: 96 @7495 has 2 MA's), (106, 7534), (112, 7561), (116, 7579), (118, 7588), (123, 7597), (127, 7612), (129, 7618), (155, 7723), (159, 7735), (168, 7789),

Gene: Laurie_11 Start: 7364, Stop: 7702, Start Num: 87

Candidate Starts for Laurie_11:

(42, 7226), (45, 7235), (56, 7277), (58, 7283), (Start: 87 @7364 has 32 MA's), (Start: 96 @7379 has 2 MA's), (106, 7418), (112, 7445), (116, 7463), (118, 7472), (122, 7478), (123, 7481), (127, 7496), (129, 7502), (155, 7607), (159, 7619), (168, 7673),

Gene: Lennon_12 Start: 7052, Stop: 7351, Start Num: 92

Candidate Starts for Lennon_12:

(35, 6851), (Start: 86 @7043 has 50 MA's), (Start: 92 @7052 has 21 MA's), (118, 7151), (133, 7208), (134, 7214), (139, 7232), (153, 7280),

Gene: LeoJr_74 Start: 30861, Stop: 31142, Start Num: 93

Candidate Starts for LeoJr_74:

(Start: 93 @30861 has 5 MA's), (115, 30945), (142, 31050),

Gene: Leonard_12 Start: 6673, Stop: 7059, Start Num: 57

Candidate Starts for Leonard_12:

(24, 6478), (27, 6508), (Start: 57 @6673 has 5 MA's), (Start: 86 @6754 has 50 MA's), (99, 6775), (118, 6859), (134, 6922), (153, 6988), (154, 6991), (161, 7015),

Gene: Lephleur_11 Start: 7363, Stop: 7701, Start Num: 87

Candidate Starts for Lephleur_11:

(42, 7225), (45, 7234), (56, 7276), (58, 7282), (Start: 87 @7363 has 32 MA's), (Start: 96 @7378 has 2 MA's), (106, 7417), (112, 7444), (116, 7462), (118, 7471), (123, 7480), (127, 7495), (129, 7501), (155, 7606), (159, 7618), (168, 7672),

Gene: LestyG_10 Start: 5953, Stop: 6288, Start Num: 80

Candidate Starts for LestyG_10:

(Start: 80 @5953 has 48 MA's), (102, 5995), (105, 6007), (108, 6022), (112, 6040), (129, 6097), (144, 6163), (160, 6220), (163, 6232), (168, 6268),

Gene: Ligma_7 Start: 4953, Stop: 5276, Start Num: 88

Candidate Starts for Ligma_7:

(45, 4833), (Start: 82 @4941 has 7 MA's), (Start: 88 @4953 has 9 MA's), (95, 4959), (97, 4965), (98, 4968), (100, 4971), (105, 4992), (106, 4998), (112, 5025), (118, 5052), (122, 5058), (144, 5148), (167, 5247),

Gene: LilHam_9 Start: 5269, Stop: 5577, Start Num: 86

Candidate Starts for LilHam_9:

(27, 5017), (31, 5044), (Start: 86 @5269 has 50 MA's), (Start: 92 @5278 has 21 MA's), (118, 5377), (133, 5434), (134, 5440), (153, 5506),

Gene: LilSmirk_11 Start: 7363, Stop: 7701, Start Num: 87

Candidate Starts for LilSmirk_11:

(42, 7225), (45, 7234), (56, 7276), (58, 7282), (Start: 87 @7363 has 32 MA's), (Start: 96 @7378 has 2 MA's), (106, 7417), (112, 7444), (116, 7462), (118, 7471), (123, 7480), (127, 7495), (129, 7501), (155, 7606), (159, 7618), (168, 7672),

Gene: Lilbeanie_12 Start: 4954, Stop: 5247, Start Num: 94

Candidate Starts for Lilbeanie_12:

(Start: 94 @4954 has 29 MA's), (109, 5011), (118, 5053), (132, 5092),

Gene: LittleMunchkin_8 Start: 6237, Stop: 6560, Start Num: 88

Candidate Starts for LittleMunchkin_8:

(1, 4998), (4, 5172), (8, 5382), (10, 5499), (15, 5685), (16, 5730), (19, 5898), (22, 5946), (Start: 82 @6225 has 7 MA's), (Start: 88 @6237 has 9 MA's), (100, 6255), (105, 6276), (106, 6282), (112, 6309), (127, 6360), (133, 6393), (144, 6432), (155, 6471), (162, 6495), (167, 6531),

Gene: LizLemon_11 Start: 7480, Stop: 7818, Start Num: 87

Candidate Starts for LizLemon_11:

(42, 7342), (45, 7351), (58, 7399), (Start: 87 @7480 has 32 MA's), (Start: 96 @7495 has 2 MA's), (106, 7534), (112, 7561), (116, 7579), (118, 7588), (123, 7597), (127, 7612), (129, 7618), (155, 7723), (159, 7735), (168, 7789),

Gene: Llemily_21 Start: 7551, Stop: 7889, Start Num: 78

Candidate Starts for Llemily_21:

(7, 6696), (12, 6945), (25, 7320), (Start: 78 @7551 has 40 MA's), (Start: 82 @7560 has 7 MA's), (102, 7608), (163, 7860), (165, 7869),

Gene: Lonelysoil_20 Start: 7796, Stop: 8134, Start Num: 78

Candidate Starts for Lonelysoil_20:

(7, 6941), (12, 7190), (14, 7235), (25, 7565), (Start: 78 @7796 has 40 MA's), (Start: 82 @7805 has 7 MA's), (102, 7853), (163, 8105), (165, 8114),

Gene: Love_13 Start: 6772, Stop: 7080, Start Num: 86

Candidate Starts for Love_13:

(Start: 86 @6772 has 50 MA's), (Start: 92 @6781 has 21 MA's), (103, 6811), (118, 6880), (133, 6937), (134, 6943), (139, 6961), (149, 6997),

Gene: Maih_9 Start: 7729, Stop: 8079, Start Num: 92

Candidate Starts for Maih_9:

(Start: 92 @7729 has 21 MA's), (109, 7789), (128, 7876), (137, 7924), (143, 7939),

Gene: MakoManhole_9 Start: 6416, Stop: 6754, Start Num: 82

Candidate Starts for MakoManhole_9:

(43, 6293), (48, 6311), (54, 6338), (60, 6359), (63, 6371), (69, 6392), (Start: 82 @6416 has 7 MA's), (95, 6434), (102, 6455), (105, 6467), (106, 6473), (112, 6500), (135, 6599), (144, 6626), (155, 6665), (167, 6725), (170, 6740),

Gene: Marcie_25 Start: 7843, Stop: 8187, Start Num: 73

Candidate Starts for Marcie_25:

(17, 7402), (39, 7714), (Start: 73 @7843 has 9 MA's), (102, 7900), (108, 7927), (109, 7930), (130, 8008), (146, 8086), (163, 8152), (165, 8161),

Gene: Mariokart_7 Start: 4960, Stop: 5283, Start Num: 88

Candidate Starts for Mariokart_7:

(Start: 82 @4948 has 7 MA's), (Start: 88 @4960 has 9 MA's), (95, 4966), (97, 4972), (100, 4978), (102, 4987), (104, 4996), (105, 4999), (106, 5005), (117, 5056), (122, 5065), (138, 5137), (167, 5254),

Gene: Marley1013_10 Start: 6739, Stop: 7074, Start Num: 80

Candidate Starts for Marley1013_10:

(Start: 80 @6739 has 48 MA's), (102, 6781), (105, 6793), (108, 6808), (112, 6826), (129, 6883), (144, 6949), (149, 6970), (160, 7006), (163, 7018), (168, 7054),

Gene: Mashley_18 Start: 7591, Stop: 7935, Start Num: 78

Candidate Starts for Mashley_18:

(7, 6736), (12, 6985), (25, 7360), (Start: 78 @7591 has 40 MA's), (Start: 82 @7600 has 7 MA's), (102, 7648), (163, 7900), (165, 7909),

Gene: MasterPo_11 Start: 7363, Stop: 7701, Start Num: 87

Candidate Starts for MasterPo_11:

(42, 7225), (45, 7234), (56, 7276), (58, 7282), (Start: 87 @7363 has 32 MA's), (Start: 96 @7378 has 2 MA's), (106, 7417), (112, 7444), (116, 7462), (118, 7471), (123, 7480), (127, 7495), (129, 7501), (155, 7606), (159, 7618), (168, 7672),

Gene: McKinley_12 Start: 7140, Stop: 7439, Start Num: 92

Candidate Starts for McKinley_12:

(Start: 86 @7131 has 50 MA's), (Start: 92 @7140 has 21 MA's), (103, 7170), (118, 7239), (133, 7296), (134, 7302), (139, 7320), (153, 7368),

Gene: MelBins_12 Start: 6449, Stop: 6835, Start Num: 57

Candidate Starts for MelBins_12:

(Start: 57 @6449 has 5 MA's), (Start: 86 @6530 has 50 MA's), (99, 6551), (118, 6635), (134, 6698), (141, 6722), (153, 6764), (154, 6767), (161, 6791),

Gene: MellowYellow_18 Start: 7675, Stop: 7986, Start Num: 78

Candidate Starts for MellowYellow_18:

(Start: 78 @7675 has 40 MA's), (Start: 80 @7678 has 48 MA's), (100, 7708), (133, 7849), (156, 7930), (163, 7957),

Gene: Mimi_82 Start: 32709, Stop: 32993, Start Num: 93

Candidate Starts for Mimi_82:

(40, 32550), (41, 32556), (46, 32568), (47, 32571), (49, 32583), (50, 32589), (52, 32592), (62, 32634), (90, 32703), (Start: 93 @32709 has 5 MA's), (99, 32727), (106, 32757), (109, 32769), (110, 32772), (128, 32838), (165, 32988),

Gene: Mischief19_10 Start: 9272, Stop: 9619, Start Num: 92

Candidate Starts for Mischief19_10:

(Start: 92 @9272 has 21 MA's), (107, 9323), (115, 9359), (120, 9386), (131, 9440), (137, 9479), (154, 9536), (169, 9608),

Gene: MmasiCarm_10 Start: 5949, Stop: 6284, Start Num: 80

Candidate Starts for MmasiCarm_10:

(Start: 80 @5949 has 48 MA's), (102, 5991), (105, 6003), (108, 6018), (112, 6036), (129, 6093), (144, 6159), (149, 6180), (160, 6216), (163, 6228), (168, 6264),

Gene: MoontowerMania_10 Start: 6171, Stop: 6479, Start Num: 86

Candidate Starts for MoontowerMania_10:

(Start: 86 @6171 has 50 MA's), (Start: 92 @6180 has 21 MA's), (103, 6210), (118, 6279), (133, 6336), (134, 6342), (139, 6360), (149, 6396),

Gene: MorillMayhem_19 Start: 7599, Stop: 7943, Start Num: 78

Candidate Starts for MorillMayhem_19:

(Start: 78 @7599 has 40 MA's), (Start: 82 @7608 has 7 MA's), (102, 7656), (146, 7842), (163, 7908), (165, 7917),

Gene: Mortcellus_9 Start: 6587, Stop: 6922, Start Num: 80

Candidate Starts for Mortcellus_9:

(Start: 80 @6587 has 48 MA's), (102, 6629), (105, 6641), (108, 6656), (112, 6674), (129, 6731), (144, 6797), (149, 6818), (160, 6854), (163, 6866), (168, 6902),

Gene: Morty007_10 Start: 6739, Stop: 7074, Start Num: 80

Candidate Starts for Morty007_10:

(Start: 80 @6739 has 48 MA's), (102, 6781), (105, 6793), (108, 6808), (112, 6826), (129, 6883), (144, 6949), (149, 6970), (160, 7006), (163, 7018), (168, 7054),

Gene: MossRose_9 Start: 6416, Stop: 6754, Start Num: 82

Candidate Starts for MossRose_9:

(43, 6293), (48, 6311), (54, 6338), (60, 6359), (63, 6371), (69, 6392), (Start: 82 @6416 has 7 MA's), (95, 6434), (102, 6455), (105, 6467), (106, 6473), (112, 6500), (135, 6599), (144, 6626), (155, 6665), (166, 6707), (167, 6725), (170, 6740),

Gene: Mutzi_11 Start: 5144, Stop: 5458, Start Num: 94

Candidate Starts for Mutzi_11:

(Start: 64 @5081 has 1 MA's), (Start: 94 @5144 has 29 MA's), (133, 5300), (134, 5306),

Gene: NHagos_7 Start: 4896, Stop: 5237, Start Num: 80

Candidate Starts for NHagos_7:

(Start: 80 @4896 has 48 MA's), (Start: 82 @4902 has 7 MA's), (97, 4926), (102, 4941), (103, 4944), (105, 4953), (115, 4998), (122, 5019), (135, 5082), (144, 5109), (167, 5208), (171, 5226),

Gene: Namago_21 Start: 7611, Stop: 7955, Start Num: 78

Candidate Starts for Namago_21:

(25, 7380), (Start: 78 @7611 has 40 MA's), (Start: 82 @7620 has 7 MA's), (102, 7668), (146, 7854), (163, 7920), (165, 7929),

Gene: Natkenzie_13 Start: 6625, Stop: 6942, Start Num: 86

Candidate Starts for Natkenzie_13:

(Start: 86 @6625 has 50 MA's), (103, 6667), (118, 6736), (134, 6799), (141, 6823), (153, 6865), (155, 6871),

Gene: Neos5_10 Start: 6739, Stop: 7074, Start Num: 80

Candidate Starts for Neos5_10:

(Start: 80 @6739 has 48 MA's), (102, 6781), (105, 6793), (108, 6808), (112, 6826), (129, 6883), (144, 6949), (149, 6970), (160, 7006), (163, 7018), (168, 7054),

Gene: Nike_21 Start: 8517, Stop: 8861, Start Num: 78

Candidate Starts for Nike_21:

(Start: 78 @8517 has 40 MA's), (Start: 82 @8526 has 7 MA's), (102, 8574), (146, 8760), (163, 8826), (165, 8835),

Gene: Nordenberg_6 Start: 4315, Stop: 4623, Start Num: 86

Candidate Starts for Nordenberg_6:

(Start: 72 @4285 has 2 MA's), (Start: 86 @4315 has 50 MA's), (Start: 92 @4324 has 21 MA's), (118, 4423), (133, 4480), (134, 4486), (139, 4504), (153, 4552),

Gene: Nozo_10 Start: 6711, Stop: 7046, Start Num: 80

Candidate Starts for Nozo_10:

(Start: 80 @6711 has 48 MA's), (102, 6753), (105, 6765), (108, 6780), (112, 6798), (129, 6855), (144, 6921), (149, 6942), (160, 6978), (163, 6990), (168, 7026),

Gene: Nubi_11 Start: 5144, Stop: 5449, Start Num: 94

Candidate Starts for Nubi_11:

(Start: 64 @5081 has 1 MA's), (Start: 94 @5144 has 29 MA's), (133, 5300), (134, 5306),

Gene: NyleyClemson_18 Start: 7617, Stop: 7928, Start Num: 78

Candidate Starts for NyleyClemson_18:

(Start: 78 @7617 has 40 MA's), (Start: 80 @7620 has 48 MA's), (100, 7650), (133, 7791), (156, 7872), (163, 7899),

Gene: Obutu_10 Start: 5950, Stop: 6285, Start Num: 80

Candidate Starts for Obutu_10:

(Start: 80 @5950 has 48 MA's), (102, 5992), (105, 6004), (108, 6019), (112, 6037), (129, 6094), (144, 6160), (149, 6181), (160, 6217), (163, 6229), (168, 6265),

Gene: Odyssey395_23 Start: 9132, Stop: 9443, Start Num: 78

Candidate Starts for Odyssey395_23:

(Start: 78 @9132 has 40 MA's), (Start: 80 @9135 has 48 MA's), (100, 9165), (133, 9306), (156, 9387), (163, 9414),

Gene: Ollypop_17 Start: 8113, Stop: 8424, Start Num: 78

Candidate Starts for Ollypop_17:

(Start: 78 @8113 has 40 MA's), (Start: 80 @8116 has 48 MA's), (126, 8239), (130, 8263), (133, 8287), (156, 8368), (163, 8395),

Gene: OneinaGillian_20 Start: 6820, Stop: 7164, Start Num: 73

Candidate Starts for OneinaGillian_20:

(39, 6691), (Start: 73 @6820 has 9 MA's), (Start: 94 @6850 has 29 MA's), (Start: 96 @6856 has 2 MA's), (102, 6877), (109, 6907), (130, 6985), (146, 7063), (163, 7129), (165, 7138),

Gene: Opia_11 Start: 7363, Stop: 7701, Start Num: 87

Candidate Starts for Opia_11:

(42, 7225), (45, 7234), (56, 7276), (58, 7282), (Start: 87 @7363 has 32 MA's), (Start: 96 @7378 has 2 MA's), (106, 7417), (112, 7444), (116, 7462), (118, 7471), (123, 7480), (127, 7495), (129, 7501), (155,

7606), (159, 7618), (168, 7672),

Gene: OrangeOswald_10 Start: 5949, Stop: 6284, Start Num: 80

Candidate Starts for OrangeOswald_10:

(Start: 80 @5949 has 48 MA's), (102, 5991), (105, 6003), (108, 6018), (112, 6036), (129, 6093), (144, 6159), (149, 6180), (160, 6216), (163, 6228), (168, 6264),

Gene: Paries_12 Start: 6433, Stop: 6771, Start Num: 72

Candidate Starts for Paries_12:

(Start: 72 @6433 has 2 MA's), (Start: 86 @6463 has 50 MA's), (Start: 92 @6472 has 21 MA's), (118, 6571), (133, 6628), (134, 6634), (139, 6652), (153, 6700),

Gene: Patbob_75 Start: 33002, Stop: 33286, Start Num: 93

Candidate Starts for Patbob_75:

(40, 32843), (41, 32849), (46, 32861), (47, 32864), (49, 32876), (50, 32882), (52, 32885), (55, 32900), (62, 32927), (90, 32996), (Start: 93 @33002 has 5 MA's), (106, 33050), (108, 33059), (109, 33062), (110, 33065), (128, 33131), (165, 33281),

Gene: PauloDiaboli_81 Start: 28905, Stop: 29189, Start Num: 93

Candidate Starts for PauloDiaboli_81:

(26, 28644), (65, 28848), (Start: 80 @28884 has 48 MA's), (Start: 93 @28905 has 5 MA's), (124, 29016), (147, 29121), (148, 29124),

Gene: Pepe25_19 Start: 7078, Stop: 7422, Start Num: 73

Candidate Starts for Pepe25_19:

(5, 6037), (9, 6271), (14, 6493), (39, 6949), (Start: 73 @7078 has 9 MA's), (102, 7135), (109, 7165), (130, 7243), (163, 7387), (165, 7396),

Gene: Phabia_21 Start: 7969, Stop: 8307, Start Num: 78

Candidate Starts for Phabia_21:

(25, 7738), (Start: 78 @7969 has 40 MA's), (Start: 82 @7978 has 7 MA's), (102, 8026), (163, 8278), (165, 8287),

Gene: Phaedrus_9 Start: 5866, Stop: 6201, Start Num: 80

Candidate Starts for Phaedrus_9:

(Start: 80 @5866 has 48 MA's), (102, 5908), (105, 5920), (108, 5935), (112, 5953), (129, 6010), (144, 6076), (149, 6097), (160, 6133), (163, 6145), (168, 6181),

Gene: Phantasmagoria_11 Start: 7363, Stop: 7701, Start Num: 87

Candidate Starts for Phantasmagoria_11:

(42, 7225), (45, 7234), (56, 7276), (58, 7282), (Start: 87 @7363 has 32 MA's), (Start: 96 @7378 has 2 MA's), (106, 7417), (112, 7444), (116, 7462), (118, 7471), (123, 7480), (127, 7495), (129, 7501), (155, 7606), (159, 7618), (168, 7672),

Gene: Phauci_5 Start: 3202, Stop: 3588, Start Num: 57

Candidate Starts for Phauci_5:

(Start: 57 @3202 has 5 MA's), (Start: 86 @3283 has 50 MA's), (99, 3304), (118, 3388), (134, 3451), (141, 3475), (153, 3517), (154, 3520), (161, 3544),

Gene: Phayeta_10 Start: 5825, Stop: 6160, Start Num: 80

Candidate Starts for Phayeta_10:

(Start: 80 @5825 has 48 MA's), (102, 5867), (105, 5879), (108, 5894), (112, 5912), (129, 5969), (144, 6035), (149, 6056), (160, 6092), (163, 6104), (168, 6140),

Gene: Philly_9 Start: 5839, Stop: 6174, Start Num: 80

Candidate Starts for Philly_9:

(Start: 80 @5839 has 48 MA's), (102, 5881), (105, 5893), (108, 5908), (112, 5926), (129, 5983), (144, 6049), (149, 6070), (160, 6106), (163, 6118), (168, 6154),

Gene: Phinally_12 Start: 6670, Stop: 7056, Start Num: 57

Candidate Starts for Phinally_12:

(24, 6475), (27, 6505), (Start: 57 @6670 has 5 MA's), (Start: 86 @6751 has 50 MA's), (99, 6772), (118, 6856), (134, 6919), (153, 6985), (154, 6988), (161, 7012),

Gene: Phinky_27 Start: 8832, Stop: 9176, Start Num: 76

Candidate Starts for Phinky_27:

(Start: 76 @8832 has 1 MA's), (108, 8916), (110, 8922), (146, 9075), (163, 9141), (165, 9150),

Gene: Phlop_11 Start: 5251, Stop: 5565, Start Num: 94

Candidate Starts for Phlop_11:

(Start: 64 @5188 has 1 MA's), (Start: 94 @5251 has 29 MA's), (133, 5407), (134, 5413),

Gene: Phlyer_10 Start: 6706, Stop: 7041, Start Num: 80

Candidate Starts for Phlyer_10:

(Start: 80 @6706 has 48 MA's), (102, 6748), (105, 6760), (108, 6775), (112, 6793), (129, 6850), (144, 6916), (149, 6937), (160, 6973), (163, 6985), (168, 7021),

Gene: Phrampa_69 Start: 30028, Stop: 30312, Start Num: 93

Candidate Starts for Phrampa_69:

(Start: 93 @30028 has 5 MA's), (106, 30076), (110, 30091), (128, 30157),

Gene: Pine5_09 Start: 5622, Stop: 5945, Start Num: 89

Candidate Starts for Pine5_09:

(37, 5445), (89, 5622), (133, 5793), (151, 5859), (155, 5871), (158, 5880), (161, 5892),

Gene: PinkCoffee_11 Start: 5281, Stop: 5595, Start Num: 94

Candidate Starts for PinkCoffee_11:

(Start: 64 @5218 has 1 MA's), (Start: 94 @5281 has 29 MA's), (133, 5437), (134, 5443),

Gene: Pipefish_10 Start: 6844, Stop: 7179, Start Num: 80

Candidate Starts for Pipefish_10:

(Start: 80 @6844 has 48 MA's), (102, 6886), (105, 6898), (108, 6913), (112, 6931), (129, 6988), (144, 7054), (149, 7075), (160, 7111), (163, 7123), (168, 7159),

Gene: Pointis_21 Start: 9130, Stop: 9441, Start Num: 78

Candidate Starts for Pointis_21:

(Start: 78 @9130 has 40 MA's), (Start: 80 @9133 has 48 MA's), (100, 9163), (133, 9304), (156, 9385), (163, 9412),

Gene: Portcullis_11 Start: 5204, Stop: 5518, Start Num: 94

Candidate Starts for Portcullis_11:

(Start: 94 @5204 has 29 MA's), (133, 5360), (134, 5366),

Gene: PullumCavea_11 Start: 5251, Stop: 5565, Start Num: 94

Candidate Starts for PullumCavea_11:

(Start: 64 @5188 has 1 MA's), (Start: 94 @5251 has 29 MA's), (133, 5407), (134, 5413),

Gene: Pumpernickel_79 Start: 31092, Stop: 31376, Start Num: 92

Candidate Starts for Pumpernickel_79:

(53, 30990), (71, 31059), (Start: 92 @31092 has 21 MA's), (117, 31191), (128, 31221), (133, 31251), (142, 31284), (147, 31308), (148, 31311), (156, 31335),

Gene: Pureglobe5_23 Start: 9146, Stop: 9457, Start Num: 78

Candidate Starts for Pureglobe5_23:

(Start: 78 @9146 has 40 MA's), (Start: 80 @9149 has 48 MA's), (100, 9179), (133, 9320), (156, 9401), (163, 9428),

Gene: Quammi_19 Start: 7540, Stop: 7878, Start Num: 78

Candidate Starts for Quammi_19:

(Start: 78 @7540 has 40 MA's), (Start: 82 @7549 has 7 MA's), (102, 7597), (163, 7849), (165, 7858),

Gene: Qyrzula_11 Start: 7453, Stop: 7791, Start Num: 87

Candidate Starts for Qyrzula_11:

(42, 7315), (45, 7324), (58, 7372), (Start: 87 @7453 has 32 MA's), (Start: 96 @7468 has 2 MA's), (106, 7507), (112, 7534), (116, 7552), (118, 7561), (123, 7570), (127, 7585), (129, 7591), (155, 7696), (159, 7708), (168, 7762),

Gene: Racecar_76 Start: 33362, Stop: 33646, Start Num: 93

Candidate Starts for Racecar_76:

(40, 33203), (41, 33209), (46, 33221), (47, 33224), (49, 33236), (50, 33242), (52, 33245), (62, 33287), (90, 33356), (Start: 93 @33362 has 5 MA's), (99, 33380), (106, 33410), (109, 33422), (110, 33425), (128, 33491), (165, 33641),

Gene: RagingRooster_10 Start: 5950, Stop: 6285, Start Num: 80

Candidate Starts for RagingRooster_10:

(Start: 80 @5950 has 48 MA's), (102, 5992), (105, 6004), (108, 6019), (112, 6037), (129, 6094), (144, 6160), (149, 6181), (160, 6217), (163, 6229), (168, 6265),

Gene: RainyPolka_9 Start: 7682, Stop: 8032, Start Num: 92

Candidate Starts for RainyPolka_9:

(Start: 92 @7682 has 21 MA's), (109, 7742), (119, 7787), (137, 7877), (143, 7892),

Gene: Ranunculus_16 Start: 8071, Stop: 8382, Start Num: 78

Candidate Starts for Ranunculus_16:

(Start: 78 @8071 has 40 MA's), (Start: 80 @8074 has 48 MA's), (115, 8170), (116, 8176), (117, 8182), (133, 8245), (148, 8302), (163, 8353),

Gene: RazzB_16 Start: 7445, Stop: 7756, Start Num: 78

Candidate Starts for RazzB_16:

(Start: 78 @7445 has 40 MA's), (Start: 80 @7448 has 48 MA's), (100, 7478), (133, 7619), (156, 7700), (163, 7727),

Gene: ReginaGlobina_74 Start: 31418, Stop: 31699, Start Num: 93

Candidate Starts for ReginaGlobina_74:

(Start: 93 @31418 has 5 MA's), (115, 31502), (142, 31607), (154, 31652),

Gene: Rhinoforte_11 Start: 7480, Stop: 7818, Start Num: 87

Candidate Starts for Rhinoforte_11:

(42, 7342), (45, 7351), (58, 7399), (Start: 87 @7480 has 32 MA's), (Start: 96 @7495 has 2 MA's), (106, 7534), (112, 7561), (116, 7579), (118, 7588), (122, 7594), (123, 7597), (127, 7612), (128, 7615), (129, 7618), (155, 7723), (159, 7735), (168, 7789),

Gene: Ribeye_12 Start: 6157, Stop: 6456, Start Num: 92

Candidate Starts for Ribeye_12:

(27, 5896), (31, 5923), (Start: 86 @6148 has 50 MA's), (Start: 92 @6157 has 21 MA's), (118, 6256), (133, 6313), (134, 6319), (153, 6385),

Gene: Rita1961_10 Start: 5950, Stop: 6285, Start Num: 80

Candidate Starts for Rita1961_10:

(Start: 80 @5950 has 48 MA's), (102, 5992), (105, 6004), (108, 6019), (112, 6037), (129, 6094), (144, 6160), (149, 6181), (160, 6217), (163, 6229), (168, 6265),

Gene: RiverRaider_12 Start: 5677, Stop: 6012, Start Num: 74

Candidate Starts for RiverRaider_12:

(61, 5644), (Start: 74 @5677 has 1 MA's), (77, 5683), (Start: 86 @5704 has 50 MA's), (100, 5731), (118, 5812), (133, 5869), (134, 5875), (135, 5881), (153, 5941), (154, 5944),

Gene: Rizwana_15 Start: 8050, Stop: 8361, Start Num: 78

Candidate Starts for Rizwana_15:

(Start: 78 @8050 has 40 MA's), (Start: 80 @8053 has 48 MA's), (116, 8155), (133, 8224), (163, 8332),

Gene: RoadKill_10 Start: 4904, Stop: 5242, Start Num: 86

Candidate Starts for RoadKill_10:

(70, 4868), (Start: 86 @4904 has 50 MA's), (99, 4931), (101, 4937), (106, 4961), (125, 5039), (134, 5105), (153, 5171), (161, 5198),

Gene: RobinRose_21 Start: 6973, Stop: 7317, Start Num: 73

Candidate Starts for RobinRose_21:

(14, 6388), (17, 6532), (39, 6844), (Start: 73 @6973 has 9 MA's), (Start: 94 @7003 has 29 MA's), (Start: 96 @7009 has 2 MA's), (102, 7030), (109, 7060), (130, 7138), (146, 7216), (163, 7282), (165, 7291),

Gene: Rockabye_77 Start: 34104, Stop: 34385, Start Num: 93

Candidate Starts for Rockabye_77:

(Start: 93 @34104 has 5 MA's), (106, 34152), (109, 34164), (110, 34167), (115, 34191), (150, 34326), (165, 34380),

Gene: Rofo_11 Start: 6703, Stop: 7011, Start Num: 86

Candidate Starts for Rofo_11:

(Start: 86 @6703 has 50 MA's), (Start: 92 @6712 has 21 MA's), (118, 6811), (133, 6868), (134, 6874), (139, 6892),

Gene: RogerDodger_12 Start: 5508, Stop: 5822, Start Num: 94

Candidate Starts for RogerDodger_12:

(20, 5157), (Start: 64 @5445 has 1 MA's), (Start: 94 @5508 has 29 MA's), (133, 5664), (134, 5670),

Gene: RomaT_10 Start: 6712, Stop: 7047, Start Num: 80

Candidate Starts for RomaT_10:

(Start: 80 @6712 has 48 MA's), (102, 6754), (105, 6766), (108, 6781), (112, 6799), (129, 6856), (144, 6922), (149, 6943), (160, 6979), (163, 6991), (168, 7027),

Gene: RomansRevenge_12 Start: 6049, Stop: 6360, Start Num: 78

Candidate Starts for RomansRevenge_12:

(Start: 78 @6049 has 40 MA's), (115, 6148), (163, 6331),

Gene: Romm_21 Start: 6973, Stop: 7317, Start Num: 73

Candidate Starts for Romm_21:

(14, 6388), (17, 6532), (39, 6844), (Start: 73 @6973 has 9 MA's), (Start: 94 @7003 has 29 MA's), (Start: 96 @7009 has 2 MA's), (102, 7030), (109, 7060), (130, 7138), (146, 7216), (163, 7282), (165, 7291),

Gene: Rosebush_11 Start: 7480, Stop: 7818, Start Num: 87

Candidate Starts for Rosebush_11:

(42, 7342), (45, 7351), (56, 7393), (58, 7399), (Start: 87 @7480 has 32 MA's), (Start: 96 @7495 has 2 MA's), (106, 7534), (112, 7561), (116, 7579), (118, 7588), (123, 7597), (127, 7612), (129, 7618), (155, 7723), (159, 7735), (168, 7789),

Gene: Rowlf_17 Start: 7306, Stop: 7644, Start Num: 78

Candidate Starts for Rowlf_17:

(Start: 78 @7306 has 40 MA's), (Start: 82 @7315 has 7 MA's), (100, 7354), (102, 7363), (146, 7549), (163, 7615), (165, 7624),

Gene: RubyRalph_22 Start: 7934, Stop: 8275, Start Num: 78

Candidate Starts for RubyRalph_22:

(2, 6794), (7, 7055), (12, 7304), (13, 7316), (39, 7802), (Start: 78 @7934 has 40 MA's), (102, 7991), (118, 8063), (146, 8177), (163, 8243), (164, 8246), (165, 8252),

Gene: Rudy_19 Start: 7540, Stop: 7878, Start Num: 78

Candidate Starts for Rudy_19:

(Start: 78 @7540 has 40 MA's), (Start: 82 @7549 has 7 MA's), (102, 7597), (163, 7849), (165, 7858),

Gene: SJReid_80 Start: 34582, Stop: 34863, Start Num: 93

Candidate Starts for SJReid_80:

(Start: 93 @34582 has 5 MA's), (132, 34720), (135, 34750), (137, 34756),

Gene: Sabella_11 Start: 7363, Stop: 7701, Start Num: 87

Candidate Starts for Sabella_11:

(42, 7225), (45, 7234), (56, 7276), (58, 7282), (Start: 87 @7363 has 32 MA's), (Start: 96 @7378 has 2 MA's), (106, 7417), (112, 7444), (116, 7462), (118, 7471), (123, 7480), (127, 7495), (129, 7501), (155, 7606), (159, 7618), (168, 7672),

Gene: SadLad_23 Start: 8391, Stop: 8732, Start Num: 78

Candidate Starts for SadLad_23:

(12, 7761), (13, 7773), (39, 8259), (Start: 78 @8391 has 40 MA's), (102, 8448), (118, 8520), (146, 8634), (163, 8700), (164, 8703), (165, 8709),

Gene: Salete_9 Start: 7730, Stop: 8080, Start Num: 92

Candidate Starts for Salete_9:

(Start: 92 @7730 has 21 MA's), (109, 7790), (128, 7877), (137, 7925), (143, 7940),

Gene: SallyK_22 Start: 8701, Stop: 9039, Start Num: 78

Candidate Starts for SallyK_22:

(7, 7846), (12, 8095), (25, 8470), (Start: 78 @8701 has 40 MA's), (Start: 82 @8710 has 7 MA's), (102, 8758), (163, 9010), (165, 9019),

Gene: Salvador_11 Start: 5123, Stop: 5437, Start Num: 94

Candidate Starts for Salvador_11:

(Start: 64 @5060 has 1 MA's), (Start: 94 @5123 has 29 MA's), (133, 5279), (134, 5285),

Gene: Sampson_13 Start: 6570, Stop: 6887, Start Num: 86

Candidate Starts for Sampson_13:

(Start: 86 @6570 has 50 MA's), (103, 6612), (118, 6681), (134, 6744), (141, 6768), (153, 6810), (155, 6816),

Gene: Sanjuju_10 Start: 6661, Stop: 6969, Start Num: 86

Candidate Starts for Sanjuju_10:

(Start: 86 @6661 has 50 MA's), (Start: 92 @6670 has 21 MA's), (118, 6769), (133, 6826), (134, 6832), (139, 6850), (153, 6898),

Gene: Saronaya_11 Start: 5959, Stop: 6258, Start Num: 92

Candidate Starts for Saronaya_11:

(27, 5698), (31, 5725), (Start: 86 @5950 has 50 MA's), (Start: 92 @5959 has 21 MA's), (118, 6058), (133, 6115), (134, 6121), (153, 6187),

Gene: Savbucketdawg_11 Start: 4956, Stop: 5270, Start Num: 94

Candidate Starts for Savbucketdawg_11:

(Start: 94 @4956 has 29 MA's), (133, 5112), (134, 5118),

Gene: SchottB_10 Start: 6126, Stop: 6434, Start Num: 86

Candidate Starts for SchottB_10:

(23, 5841), (30, 5895), (32, 5907), (36, 5946), (52, 6024), (Start: 72 @6096 has 2 MA's), (Start: 86 @6126 has 50 MA's), (Start: 92 @6135 has 21 MA's), (133, 6291), (134, 6297), (153, 6363),

Gene: Scioto_13 Start: 6625, Stop: 6942, Start Num: 86

Candidate Starts for Scioto_13:

(Start: 86 @6625 has 50 MA's), (103, 6667), (118, 6736), (134, 6799), (141, 6823), (153, 6865), (155, 6871),

Gene: Sedona_12 Start: 7669, Stop: 7977, Start Num: 86

Candidate Starts for Sedona_12:

(Start: 86 @7669 has 50 MA's), (Start: 92 @7678 has 21 MA's), (103, 7708), (118, 7777), (133, 7834), (134, 7840), (139, 7858), (153, 7906),

Gene: Shatter_7 Start: 4953, Stop: 5276, Start Num: 88

Candidate Starts for Shatter_7:

(45, 4833), (Start: 82 @4941 has 7 MA's), (Start: 88 @4953 has 9 MA's), (95, 4959), (97, 4965), (98, 4968), (100, 4971), (105, 4992), (106, 4998), (112, 5025), (118, 5052), (122, 5058), (144, 5148), (167, 5247),

Gene: Shinji_11 Start: 5145, Stop: 5459, Start Num: 94

Candidate Starts for Shinji_11:

(Start: 94 @5145 has 29 MA's), (133, 5301), (134, 5307),

Gene: Shivanishola_11 Start: 6886, Stop: 7185, Start Num: 92

Candidate Starts for Shivanishola_11:

(Start: 86 @6877 has 50 MA's), (Start: 92 @6886 has 21 MA's), (103, 6916), (118, 6985), (133, 7042), (134, 7048), (139, 7066), (153, 7114),

Gene: SilentRX_17 Start: 8205, Stop: 8516, Start Num: 80

Candidate Starts for SilentRX_17:

(49, 8109), (Start: 78 @8202 has 40 MA's), (Start: 80 @8205 has 48 MA's), (Start: 85 @8217 has 1 MA's), (Start: 96 @8223 has 2 MA's), (157, 8460), (163, 8484),

Gene: Sillytadpoles_21 Start: 7538, Stop: 7876, Start Num: 78

Candidate Starts for Sillytadpoles_21:

(Start: 78 @7538 has 40 MA's), (Start: 82 @7547 has 7 MA's), (102, 7595), (163, 7847), (165, 7856),

Gene: Sisko_6 Start: 4758, Stop: 5081, Start Num: 88

Candidate Starts for Sisko_6:

(Start: 82 @4746 has 7 MA's), (Start: 88 @4758 has 9 MA's), (100, 4776), (102, 4785), (105, 4797), (106, 4803), (133, 4914), (137, 4932), (144, 4953), (167, 5052),

Gene: Sitar_12 Start: 7043, Stop: 7351, Start Num: 86

Candidate Starts for Sitar_12:

(35, 6851), (Start: 86 @7043 has 50 MA's), (Start: 92 @7052 has 21 MA's), (118, 7151), (133, 7208), (134, 7214), (139, 7232), (153, 7280),

Gene: SlippinJimmy_10 Start: 6711, Stop: 7046, Start Num: 80

Candidate Starts for SlippinJimmy_10:

(Start: 80 @6711 has 48 MA's), (102, 6753), (105, 6765), (108, 6780), (112, 6798), (129, 6855), (144, 6921), (149, 6942), (160, 6978), (163, 6990), (168, 7026),

Gene: SmokingBunny_11 Start: 5123, Stop: 5437, Start Num: 94

Candidate Starts for SmokingBunny_11:

(Start: 64 @5060 has 1 MA's), (Start: 94 @5123 has 29 MA's), (133, 5279), (134, 5285),

Gene: Sour_10 Start: 6612, Stop: 6938, Start Num: 88

Candidate Starts for Sour_10:

(Start: 82 @6600 has 7 MA's), (Start: 88 @6612 has 9 MA's), (97, 6624), (100, 6630), (104, 6648), (105, 6651), (106, 6657), (107, 6660), (112, 6684), (118, 6711), (122, 6717), (135, 6780), (152, 6837), (167, 6906),

Gene: Squash_23 Start: 8572, Stop: 8916, Start Num: 78

Candidate Starts for Squash_23:

(Start: 78 @8572 has 40 MA's), (Start: 82 @8581 has 7 MA's), (102, 8629), (146, 8815), (163, 8881), (165, 8890),

Gene: Statler_22 Start: 8077, Stop: 8421, Start Num: 78

Candidate Starts for Statler_22:

(25, 7846), (Start: 78 @8077 has 40 MA's), (Start: 82 @8086 has 7 MA's), (102, 8134), (146, 8320), (163, 8386), (165, 8395),

Gene: StorminNorm_11 Start: 5953, Stop: 6261, Start Num: 86

Candidate Starts for StorminNorm_11:

(27, 5701), (31, 5728), (Start: 86 @5953 has 50 MA's), (Start: 92 @5962 has 21 MA's), (118, 6061), (133, 6118), (134, 6124), (153, 6190),

Gene: StrawberryJamm_23 Start: 7840, Stop: 8178, Start Num: 78

Candidate Starts for StrawberryJamm_23:

(Start: 78 @7840 has 40 MA's), (Start: 82 @7849 has 7 MA's), (102, 7897), (163, 8149), (165, 8158),

Gene: Stultus_11 Start: 6867, Stop: 7175, Start Num: 86

Candidate Starts for Stultus_11:

(Start: 86 @6867 has 50 MA's), (Start: 92 @6876 has 21 MA's), (103, 6906), (118, 6975), (133, 7032), (134, 7038), (139, 7056), (153, 7104),

Gene: Sunfish_24 Start: 9142, Stop: 9498, Start Num: 78

Candidate Starts for Sunfish_24:

(Start: 78 @9142 has 40 MA's), (Start: 96 @9175 has 2 MA's), (99, 9184), (110, 9229), (145, 9394), (148, 9412), (163, 9463),

Gene: SwainyDoc_10 Start: 5947, Stop: 6282, Start Num: 80

Candidate Starts for SwainyDoc_10:

(Start: 80 @5947 has 48 MA's), (102, 5989), (105, 6001), (108, 6016), (112, 6034), (129, 6091), (144, 6157), (160, 6214), (163, 6226), (168, 6262),

Gene: SynergyX_10 Start: 5950, Stop: 6285, Start Num: 80

Candidate Starts for SynergyX_10:

(Start: 80 @5950 has 48 MA's), (102, 5992), (105, 6004), (108, 6019), (112, 6037), (129, 6094), (144, 6160), (149, 6181), (160, 6217), (163, 6229), (168, 6265),

Gene: TA17A_11 Start: 7363, Stop: 7701, Start Num: 87

Candidate Starts for TA17A_11:

(42, 7225), (45, 7234), (58, 7282), (Start: 87 @7363 has 32 MA's), (Start: 96 @7378 has 2 MA's), (106, 7417), (112, 7444), (116, 7462), (118, 7471), (122, 7477), (123, 7480), (127, 7495), (129, 7501), (155, 7606), (159, 7618), (168, 7672),

Gene: TP1604_9 Start: 7730, Stop: 8080, Start Num: 92

Candidate Starts for TP1604_9:

(Start: 92 @7730 has 21 MA's), (109, 7790), (128, 7877), (137, 7925), (143, 7940),

Gene: TPA2_16 Start: 7599, Stop: 7940, Start Num: 80

Candidate Starts for TPA2_16:

(59, 7536), (Start: 80 @7599 has 48 MA's), (102, 7644), (104, 7653), (105, 7656), (107, 7665), (112, 7689), (118, 7716), (134, 7782), (144, 7815), (162, 7878), (167, 7914), (170, 7929), (172, 7935),

Gene: Talia1610_75 Start: 32727, Stop: 33011, Start Num: 93

Candidate Starts for Talia1610_75:

(40, 32568), (41, 32574), (46, 32586), (47, 32589), (49, 32601), (50, 32607), (52, 32610), (62, 32652), (90, 32721), (Start: 93 @32727 has 5 MA's), (99, 32745), (106, 32775), (109, 32787), (110, 32790), (128, 32856), (165, 33006),

Gene: Tangent_9 Start: 5665, Stop: 6003, Start Num: 72

Candidate Starts for Tangent_9:

(Start: 72 @5665 has 2 MA's), (Start: 86 @5695 has 50 MA's), (Start: 92 @5704 has 21 MA's), (118, 5803), (133, 5860), (134, 5866), (139, 5884), (153, 5932),

Gene: Tangerine_11 Start: 5962, Stop: 6270, Start Num: 86

Candidate Starts for Tangerine_11:

(27, 5710), (31, 5737), (Start: 86 @5962 has 50 MA's), (Start: 92 @5971 has 21 MA's), (118, 6070), (133, 6127), (134, 6133), (153, 6199),

Gene: Tank_16 Start: 8065, Stop: 8376, Start Num: 78

Candidate Starts for Tank_16:

(49, 7972), (Start: 78 @8065 has 40 MA's), (Start: 80 @8068 has 48 MA's), (131, 8218), (133, 8239), (134, 8245), (157, 8323), (163, 8347),

Gene: Tardus_13 Start: 5665, Stop: 5982, Start Num: 86

Candidate Starts for Tardus_13:

(Start: 86 @5665 has 50 MA's), (103, 5707), (118, 5776), (134, 5839), (141, 5863), (153, 5905),

Gene: Teehee_22 Start: 8775, Stop: 9113, Start Num: 78

Candidate Starts for Teehee_22:

(Start: 78 @8775 has 40 MA's), (Start: 82 @8784 has 7 MA's), (102, 8832), (163, 9084), (165, 9093),

Gene: Tempo_20 Start: 7165, Stop: 7509, Start Num: 73

Candidate Starts for Tempo_20:

(39, 7036), (Start: 73 @7165 has 9 MA's), (Start: 94 @7195 has 29 MA's), (Start: 96 @7201 has 2 MA's), (102, 7222), (109, 7252), (130, 7330), (146, 7408), (163, 7474), (165, 7483),

Gene: Thing3_12 Start: 6782, Stop: 7090, Start Num: 86

Candidate Starts for Thing3_12:

(Start: 72 @6752 has 2 MA's), (Start: 86 @6782 has 50 MA's), (Start: 92 @6791 has 21 MA's), (118, 6890), (133, 6947), (134, 6953), (139, 6971), (153, 7019),

Gene: Tiamoceli_13 Start: 6287, Stop: 6625, Start Num: 86

Candidate Starts for Tiamoceli_13:

(70, 6251), (Start: 86 @6287 has 50 MA's), (99, 6314), (101, 6320), (106, 6344), (125, 6422), (134, 6488), (153, 6554), (161, 6581),

Gene: TillyBobJoe_11 Start: 4959, Stop: 5273, Start Num: 94

Candidate Starts for TillyBobJoe_11:

(Start: 94 @4959 has 29 MA's), (133, 5115), (134, 5121),

Gene: Tinciduntolum_12 Start: 7479, Stop: 7817, Start Num: 87

Candidate Starts for Tinciduntolum_12:

(42, 7341), (45, 7350), (56, 7392), (58, 7398), (Start: 87 @7479 has 32 MA's), (Start: 96 @7494 has 2 MA's), (106, 7533), (112, 7560), (116, 7578), (118, 7587), (123, 7596), (127, 7611), (129, 7617), (155, 7722), (159, 7734), (168, 7788),

Gene: TinyTerror_10 Start: 5952, Stop: 6287, Start Num: 80

Candidate Starts for TinyTerror_10:

(Start: 80 @5952 has 48 MA's), (102, 5994), (105, 6006), (108, 6021), (112, 6039), (129, 6096), (144, 6162), (149, 6183), (160, 6219), (163, 6231), (168, 6267),

Gene: Tissue_20 Start: 7909, Stop: 8253, Start Num: 78

Candidate Starts for Tissue_20:

(Start: 78 @7909 has 40 MA's), (Start: 82 @7918 has 7 MA's), (102, 7966), (146, 8152), (163, 8218), (165, 8227),

Gene: Togo_11 Start: 5123, Stop: 5437, Start Num: 94

Candidate Starts for Togo_11:

(Start: 64 @5060 has 1 MA's), (Start: 94 @5123 has 29 MA's), (133, 5279), (134, 5285),

Gene: Tres_11 Start: 7363, Stop: 7701, Start Num: 87

Candidate Starts for Tres_11:

(42, 7225), (45, 7234), (58, 7282), (Start: 87 @7363 has 32 MA's), (Start: 96 @7378 has 2 MA's), (106, 7417), (112, 7444), (116, 7462), (118, 7471), (123, 7480), (127, 7495), (129, 7501), (155, 7606), (159, 7618), (168, 7672),

Gene: TurkishDelight_10 Start: 6065, Stop: 6391, Start Num: 91
Candidate Starts for TurkishDelight_10:
(83, 6050), (Start: 91 @6065 has 1 MA's), (151, 6305), (156, 6317),

Gene: Twister6_11 Start: 5055, Stop: 5369, Start Num: 94
Candidate Starts for Twister6_11:
(Start: 64 @4992 has 1 MA's), (Start: 94 @5055 has 29 MA's), (133, 5211), (134, 5217),

Gene: Twonlo_10 Start: 4904, Stop: 5242, Start Num: 86
Candidate Starts for Twonlo_10:
(70, 4868), (Start: 86 @4904 has 50 MA's), (99, 4931), (101, 4937), (106, 4961), (125, 5039), (134, 5105), (153, 5171), (161, 5198),

Gene: Tycho_11 Start: 5971, Stop: 6270, Start Num: 92
Candidate Starts for Tycho_11:
(27, 5710), (31, 5737), (Start: 86 @5962 has 50 MA's), (Start: 92 @5971 has 21 MA's), (118, 6070), (133, 6127), (134, 6133), (153, 6199),

Gene: Tydolla_10 Start: 6711, Stop: 7046, Start Num: 80
Candidate Starts for Tydolla_10:
(Start: 80 @6711 has 48 MA's), (102, 6753), (105, 6765), (108, 6780), (112, 6798), (129, 6855), (144, 6921), (149, 6942), (160, 6978), (163, 6990), (168, 7026),

Gene: Valary_12 Start: 5508, Stop: 5822, Start Num: 94
Candidate Starts for Valary_12:
(20, 5157), (Start: 64 @5445 has 1 MA's), (Start: 94 @5508 has 29 MA's), (133, 5664), (134, 5670),

Gene: VanDeWege_12 Start: 5436, Stop: 5750, Start Num: 94
Candidate Starts for VanDeWege_12:
(Start: 64 @5373 has 1 MA's), (Start: 94 @5436 has 29 MA's), (133, 5592), (134, 5598),

Gene: Verity_13 Start: 6898, Stop: 7215, Start Num: 86
Candidate Starts for Verity_13:
(Start: 86 @6898 has 50 MA's), (100, 6928), (118, 7009), (134, 7072), (139, 7090), (140, 7093), (141, 7096), (153, 7138),

Gene: ViaConlectus_13 Start: 6625, Stop: 6942, Start Num: 86
Candidate Starts for ViaConlectus_13:
(Start: 86 @6625 has 50 MA's), (103, 6667), (118, 6736), (134, 6799), (141, 6823), (153, 6865), (155, 6871),

Gene: Vic9_12 Start: 7806, Stop: 8144, Start Num: 87
Candidate Starts for Vic9_12:
(42, 7668), (45, 7677), (56, 7719), (58, 7725), (Start: 87 @7806 has 32 MA's), (Start: 96 @7821 has 2 MA's), (106, 7860), (112, 7887), (116, 7905), (118, 7914), (122, 7920), (123, 7923), (127, 7938), (128, 7941), (129, 7944), (155, 8049), (159, 8061), (168, 8115),

Gene: Viceroy_20 Start: 7540, Stop: 7878, Start Num: 78
Candidate Starts for Viceroy_20:

(Start: 78 @7540 has 40 MA's), (Start: 82 @7549 has 7 MA's), (102, 7597), (163, 7849), (165, 7858),

Gene: Vivi2_10 Start: 5856, Stop: 6164, Start Num: 86

Candidate Starts for Vivi2_10:

(35, 5664), (Start: 86 @5856 has 50 MA's), (Start: 92 @5865 has 21 MA's), (118, 5964), (133, 6021), (134, 6027), (139, 6045), (153, 6093),

Gene: WaddleDee_68 Start: 27340, Stop: 27624, Start Num: 93

Candidate Starts for WaddleDee_68:

(44, 27196), (81, 27322), (90, 27334), (Start: 93 @27340 has 5 MA's), (165, 27619),

Gene: Wayne3_22 Start: 8505, Stop: 8843, Start Num: 78

Candidate Starts for Wayne3_22:

(7, 7650), (12, 7899), (14, 7944), (25, 8274), (Start: 78 @8505 has 40 MA's), (Start: 82 @8514 has 7 MA's), (102, 8562), (163, 8814), (165, 8823),

Gene: West99_11 Start: 7480, Stop: 7818, Start Num: 87

Candidate Starts for West99_11:

(42, 7342), (45, 7351), (56, 7393), (58, 7399), (Start: 87 @7480 has 32 MA's), (Start: 96 @7495 has 2 MA's), (106, 7534), (112, 7561), (116, 7579), (118, 7588), (123, 7597), (127, 7612), (129, 7618), (155, 7723), (159, 7735), (168, 7789),

Gene: Wheelie_20 Start: 7856, Stop: 8194, Start Num: 78

Candidate Starts for Wheelie_20:

(7, 7001), (12, 7250), (14, 7295), (25, 7625), (Start: 78 @7856 has 40 MA's), (Start: 82 @7865 has 7 MA's), (102, 7913), (163, 8165), (165, 8174),

Gene: Wilca_20 Start: 7061, Stop: 7405, Start Num: 73

Candidate Starts for Wilca_20:

(39, 6932), (Start: 73 @7061 has 9 MA's), (102, 7118), (109, 7148), (130, 7226), (163, 7370), (165, 7379),

Gene: Wilde_16 Start: 7993, Stop: 8304, Start Num: 78

Candidate Starts for Wilde_16:

(49, 7900), (Start: 78 @7993 has 40 MA's), (Start: 80 @7996 has 48 MA's), (131, 8146), (133, 8167), (134, 8173), (157, 8251), (163, 8275),

Gene: Wizard_11 Start: 5251, Stop: 5565, Start Num: 94

Candidate Starts for Wizard_11:

(Start: 64 @5188 has 1 MA's), (Start: 94 @5251 has 29 MA's), (133, 5407), (134, 5413),

Gene: Wooper_9 Start: 6416, Stop: 6754, Start Num: 82

Candidate Starts for Wooper_9:

(43, 6293), (48, 6311), (54, 6338), (60, 6359), (63, 6371), (69, 6392), (Start: 82 @6416 has 7 MA's), (95, 6434), (102, 6455), (105, 6467), (106, 6473), (112, 6500), (135, 6599), (144, 6626), (155, 6665), (167, 6725), (170, 6740),

Gene: Xkcd426_10 Start: 8759, Stop: 9115, Start Num: 92

Candidate Starts for Xkcd426_10:

(33, 8549), (34, 8552), (75, 8729), (Start: 92 @8759 has 21 MA's), (109, 8819), (110, 8822), (120, 8873), (132, 8918), (137, 8954),

Gene: YDN12_10 Start: 7676, Stop: 8026, Start Num: 92

Candidate Starts for YDN12_10:

(Start: 92 @7676 has 21 MA's), (109, 7736), (119, 7781), (121, 7793), (128, 7823), (137, 7871), (143, 7886), (161, 7955),

Gene: Yago84_6 Start: 4755, Stop: 5090, Start Num: 82

Candidate Starts for Yago84_6:

(Start: 82 @4755 has 7 MA's), (Start: 88 @4767 has 9 MA's), (100, 4785), (102, 4794), (105, 4806), (106, 4812), (133, 4923), (137, 4941), (144, 4962), (167, 5061),

Gene: Yahalom_10 Start: 5950, Stop: 6285, Start Num: 80

Candidate Starts for Yahalom_10:

(Start: 80 @5950 has 48 MA's), (102, 5992), (105, 6004), (108, 6019), (112, 6037), (129, 6094), (144, 6160), (149, 6181), (160, 6217), (163, 6229), (168, 6265),

Gene: Yeshua_9 Start: 6420, Stop: 6758, Start Num: 82

Candidate Starts for Yeshua_9:

(43, 6297), (48, 6315), (54, 6342), (60, 6363), (63, 6375), (69, 6396), (Start: 82 @6420 has 7 MA's), (102, 6459), (105, 6471), (106, 6477), (112, 6504), (133, 6591), (135, 6603), (137, 6609), (144, 6630), (155, 6669), (166, 6711), (167, 6729), (170, 6744),

Gene: Yinz_10 Start: 5976, Stop: 6311, Start Num: 80

Candidate Starts for Yinz_10:

(Start: 80 @5976 has 48 MA's), (102, 6018), (105, 6030), (108, 6045), (112, 6063), (129, 6120), (144, 6186), (149, 6207), (160, 6243), (163, 6255), (168, 6291),

Gene: YorkOnyx_11 Start: 5911, Stop: 6219, Start Num: 86

Candidate Starts for YorkOnyx_11:

(27, 5659), (Start: 86 @5911 has 50 MA's), (Start: 92 @5920 has 21 MA's), (118, 6019), (133, 6076), (134, 6082), (153, 6148),

Gene: YungMoney_11 Start: 6205, Stop: 6510, Start Num: 94

Candidate Starts for YungMoney_11:

(20, 5854), (Start: 64 @6142 has 1 MA's), (Start: 94 @6205 has 29 MA's), (133, 6361), (134, 6367),

Gene: Zagie_21 Start: 8043, Stop: 8381, Start Num: 78

Candidate Starts for Zagie_21:

(Start: 78 @8043 has 40 MA's), (Start: 82 @8052 has 7 MA's), (100, 8091), (102, 8100), (146, 8286), (163, 8352), (165, 8361),

Gene: Zhafia_24 Start: 8281, Stop: 8625, Start Num: 78

Candidate Starts for Zhafia_24:

(25, 8050), (Start: 78 @8281 has 40 MA's), (Start: 82 @8290 has 7 MA's), (102, 8338), (146, 8524), (163, 8590), (165, 8599),

Gene: Zipp_13 Start: 7043, Stop: 7360, Start Num: 86

Candidate Starts for Zipp_13:

(Start: 86 @7043 has 50 MA's), (100, 7073), (118, 7154), (134, 7217), (139, 7235), (140, 7238), (141, 7241), (153, 7283),

Gene: Zitch_14 Start: 6362, Stop: 6679, Start Num: 86

Candidate Starts for Zitch_14:

(Start: 86 @6362 has 50 MA's), (103, 6404), (118, 6473), (134, 6536), (141, 6560), (153, 6602),

Gene: Zooman_66 Start: 27525, Stop: 27800, Start Num: 96

Candidate Starts for Zooman_66:

(81, 27510), (Start: 96 @27525 has 2 MA's), (102, 27546), (133, 27675), (147, 27732), (148, 27735),

Gene: phiAsp2_3 Start: 663, Stop: 1013, Start Num: 69

Candidate Starts for phiAsp2_3:

(69, 663), (84, 693), (89, 702), (101, 732), (104, 747), (106, 756), (110, 771), (118, 810), (134, 888),
(150, 945), (163, 990),