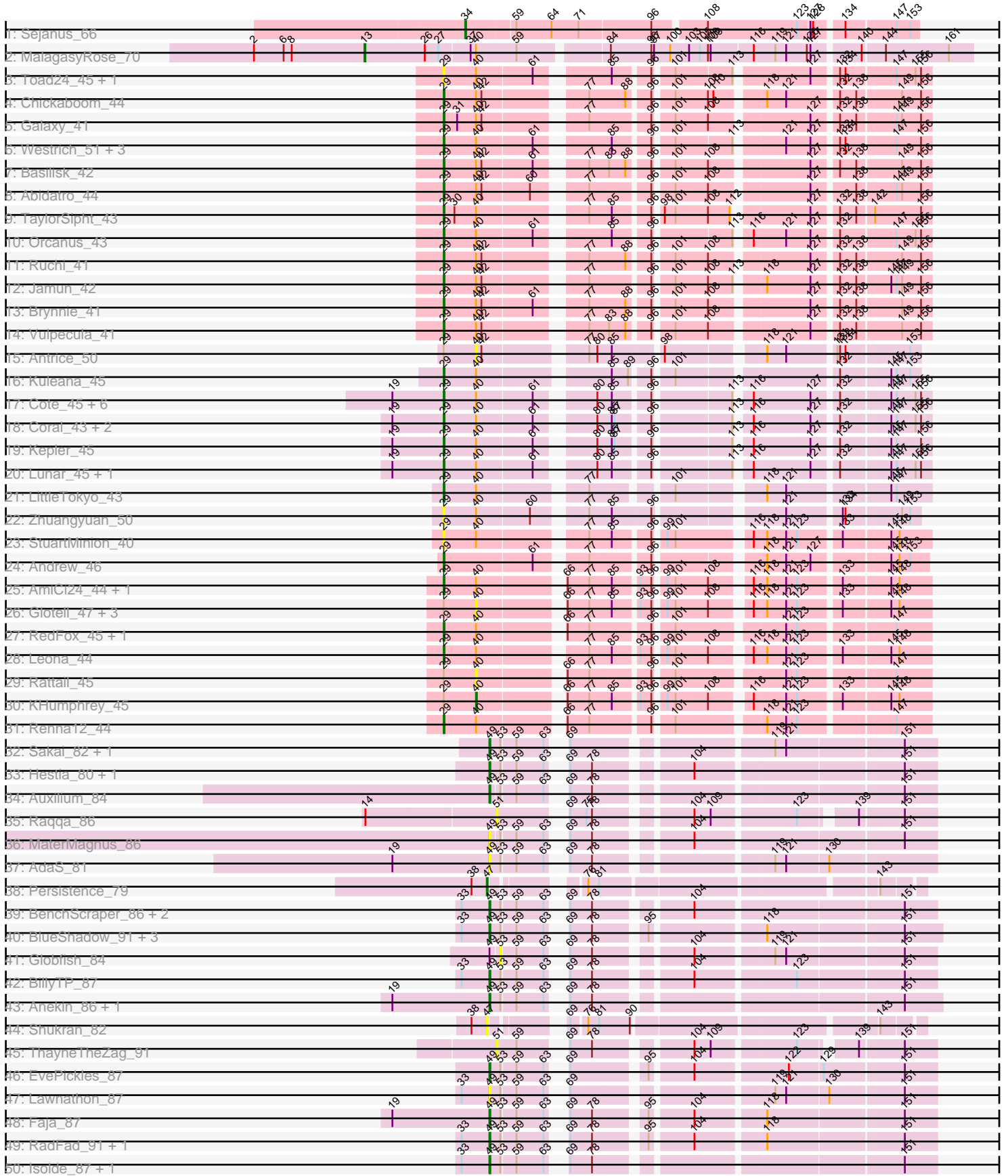
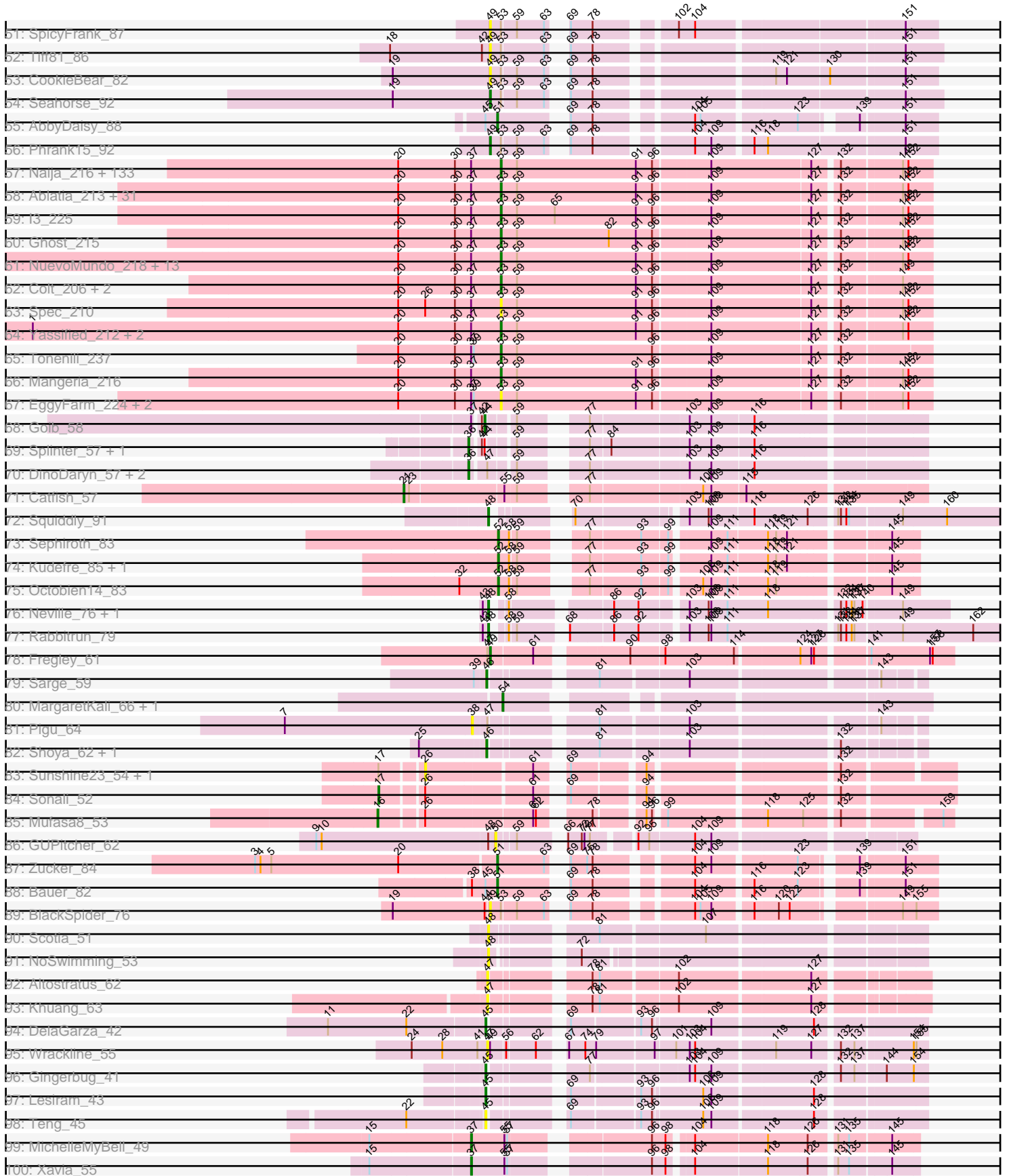


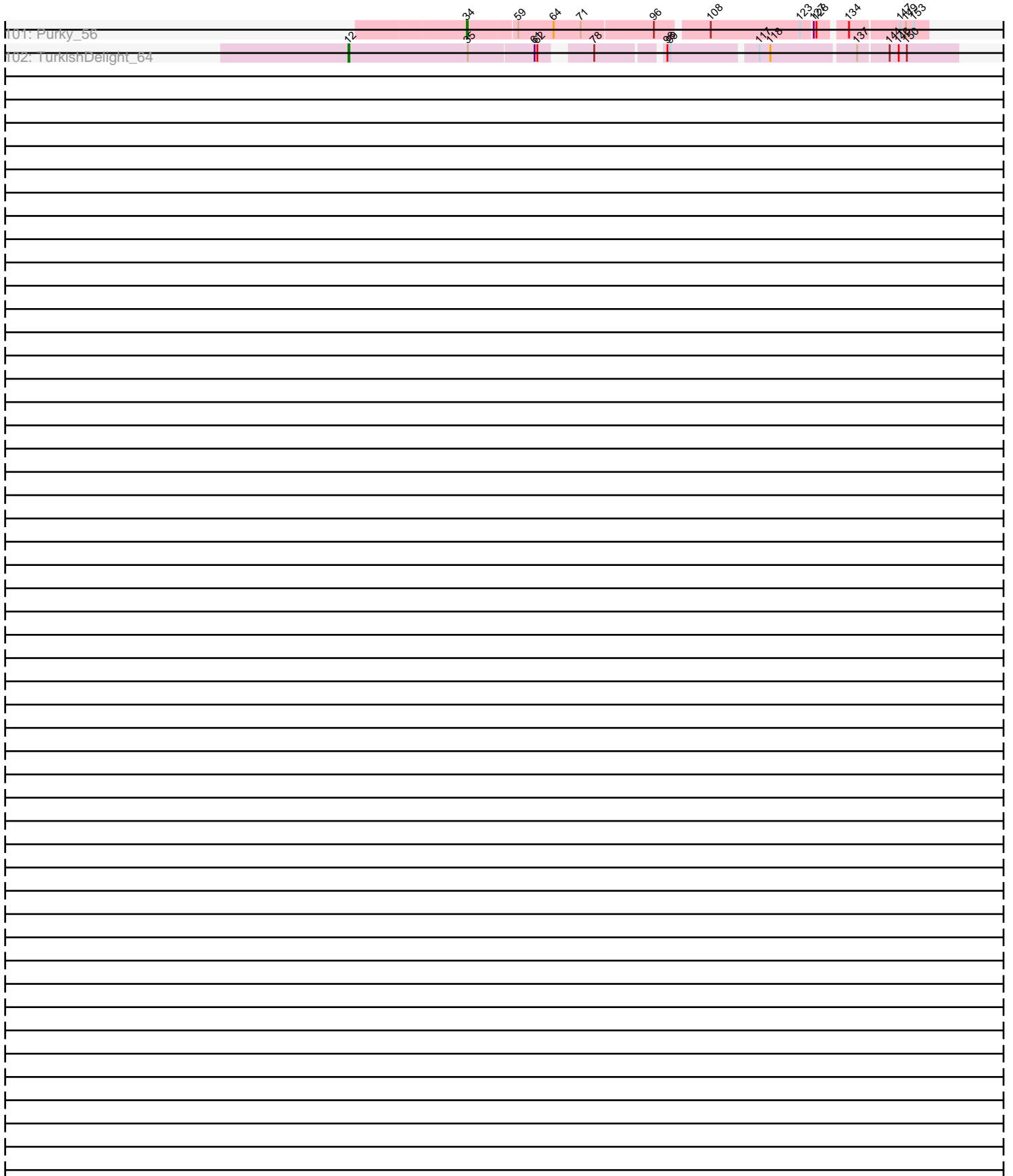
Pham 202608



Pham 202608



Pham 202608



Note: Tracks are now grouped by subcluster and scaled. Switching in subcluster is indicated by changes in track color. Track scale is now set by default to display the region 30 bp upstream of start 1 to 30 bp downstream of the last possible start. If this default region is judged to be packed too tightly with annotated starts, the track will be further scaled to only show that region of the ORF with annotated starts. This action will be indicated by adding "Zoomed" to the title. For starts, yellow indicates the location of called starts comprised solely of Glimmer/GeneMark auto-annotations, green indicates the location of called starts with at least 1 manual gene annotation.

Pham 202608 Report

This analysis was run 01/18/25 on database version 583.

Pham number 202608 has 321 members, 70 are drafts.

Phages represented in each track:

- Track 1 : Sejanus_66
- Track 2 : MalagasyRose_70
- Track 3 : Toad24_45, KendraB23_53
- Track 4 : Chickaboom_44
- Track 5 : Galaxy_41
- Track 6 : Westrich_51, Eesa_42, Gravel_52, Pelletreau_52
- Track 7 : Basilisk_42
- Track 8 : Abidatro_44
- Track 9 : TaylorSipht_43
- Track 10 : Orcanus_43
- Track 11 : Ruchi_41
- Track 12 : Jamun_42
- Track 13 : Brynnie_41
- Track 14 : Vulpecula_41
- Track 15 : Antrice_50
- Track 16 : Kuleana_45
- Track 17 : Cote_45, Bedetta_48, Colusalem_46, Amelia_43, HannahPhantana_44, Jerole_53, Bible12_47
- Track 18 : Coral_43, Melons_45, Polka_43
- Track 19 : Kepler_45
- Track 20 : Lunar_45, Daob_45
- Track 21 : LittleTokyo_43
- Track 22 : Zhuangyuan_50
- Track 23 : StuartMinion_40
- Track 24 : Andrew_46
- Track 25 : AmiCi24_44, Juno112_44
- Track 26 : Glotell_47, Camara_45, HamCheese_44, Atlantica_45
- Track 27 : RedFox_45, PhluffyCoco_45
- Track 28 : Leona_44
- Track 29 : Rattail_45
- Track 30 : KHumphrey_45
- Track 31 : Renna12_44
- Track 32 : Sakai_82, Gorpy_83
- Track 33 : Hestia_80, Bhageatrice_92
- Track 34 : Auxilium_84
- Track 35 : Raqqa_86
- Track 36 : MaterMagnus_86

- Track 37 : AdaS_81
- Track 38 : Persistence_79
- Track 39 : BenchScraper_86, Richie_89, Windest_89
- Track 40 : BlueShadow_91, Vopal_87, Raphaella_86, MidnightRain_92
- Track 41 : Globfish_84
- Track 42 : BillyTP_87
- Track 43 : Anekin_86, Aikyam_84
- Track 44 : Shukran_82
- Track 45 : ThayneTheZag_91
- Track 46 : EvePickles_87
- Track 47 : Lawnathon_87
- Track 48 : Faja_87
- Track 49 : RadFad_91, Hillester_90
- Track 50 : Isolde_87, YoungHarleezy_85
- Track 51 : SpicyFrank_87
- Track 52 : Tiff81_86
- Track 53 : CookieBear_82
- Track 54 : Seahorse_92
- Track 55 : AbbyDaisy_88
- Track 56 : Phrank15_92
- Track 57 : Naija_216, Bangla1971_215, IkeLoa_207, Drazdys_213, ShiaLabeouf_212, RoMag_210, Loanshark_212, Khaleesi_214, Jaygup_211, SrishMeg2525_212, Essence_212, SVoro_212, CindyLou_216, Delylah_217, GlutenPhree_215, ValleyTerrace_216, Delilah_213, Bipolarisk_213, Rizal_207, Koguma_214, CharlieB_209, Jessibeth14_215, BadAgartude_209, Jezreel_212, Gabriel_218, Capablanca_220, ArcherS7_215, Shelob_216, Pivoine_216, DTDevon_217, Ewok_214, Naval22_220, Morizzled23_212, Gamgam_216, JPickles_211, Littleton_218, MoMoMixon_213, Breeniome_214, Erdmann_216, Blackdragon_210, Dietrick_204, McWolfish_212, NedWong_214, Astraea_209, Kboogie_219, Roots515_217, Lukilu_206, Amataga_216, Maby2021_215, Momo_216, ZygoTaiga_212, McGee_214, Latch_215, Patter_216, JustHall_209, Melpomini_210, Ading_216, EmToTheThree_215, Burrough_217, Derek_212, Asterius_211, Phlegm_219, StephanieG_211, TinyTim_213, Phusco_213, Grungle_199, SmallFry_215, Shnickers_213, Bread_210, Shaqnato_206, Jedediah_215, Bonray_217, Atlantean_215, Ngannou_212, Gizmo_221, Issimir_208, Zeenon_217, Rahel_216, Tyke_213, Napoleon13_212, Daffodil_220, YoungMoneyMata_214, ScottMcG_209, EmmaElysia_219, NoodleTree_221, Norm_215, DrPhinkDaddy_212, Iota_210, Halldule_208, Teardrop_212, Sprinklers_213, Domi_209, Chomp_215, MikeLiesIn_217, ParkTD_214, Lethe_217, YemiJoy2021_216, Tortoise16_213, Jemmno_214, StubbySaigey_220, DirtMonster_208, PurduePete_215, LifeSavor_214, Pleione_219, Izajani_213, FudgeTart_210, Adlitam_214, Wally_213, Zalkecks_214, Catera_207, Megamind_212, Shrimp_217, Lee7_215, Mikro_211, Yucca_215, BananaFence_212, Caravan_206, Salacia_215, Kamryn_214, Janiyra_218, Darko_214, Matsumoto_214, Nidhogg_216, Audrick_217, Ava3_214, Willis_216, ET08_203, Babyland_218, InigoMontoya_218, Guwapp_210, FoxtrotP1_213, Spud_209, Ronan_211, SilverDipper_219
- Track 58 : Ablatia_213, Tainan_216, Concombre_220, Pio_223, EasyJones_218, BeanWater_207, LolaVinca_213, Belieber_208, Basquiat_212, ChickenPhender_211, LordLeafolot_217, Specks_219, Bigswole_220, FrayBell_218, Trinitium_211, Demodog_221, Dandelion_223, JigglyPuff_222, Fludd_215, Cactojaque_210, Cali_208, Phox_216, Chargie21_212, Blackbrain_212, LRRHood_208, ErnieJ_208, Bxz1_205, InterFolia_218, Turret_208, Quasimodo_217, QBert_207, Nappy_216

- Track 59 : l3_225
- Track 60 : Ghost_215
- Track 61 : NuevoMundo_218, ChaylaJr_213, Sebata_216, Shifa_192, Pinkcreek_199, Flabslab_210, BackyardAgain_211, JayJay_213, Rabinovish_208, Pier_216, HyRo_203, Alice_202, LinStu_214, Stubby_199
- Track 62 : Colt_206, Blubba_204, Cane17_206
- Track 63 : Spec_210
- Track 64 : Yassified_212, Sauce_211, JulietS_208
- Track 65 : Tonenili_237
- Track 66 : Mangeria_216
- Track 67 : EggyFarm_224, Grasshills_223, BigCity_224
- Track 68 : Goib_58
- Track 69 : Splinter_57, Vendetta_57
- Track 70 : DinoDaryn_57, TZGordon_58, Huffy_57
- Track 71 : Catfish_57
- Track 72 : Squiddly_91
- Track 73 : Sephiroth_83
- Track 74 : Kudefre_85, Syleon_86
- Track 75 : Octobien14_83
- Track 76 : Neville_76, Trax_79
- Track 77 : Rabbitrun_79
- Track 78 : Fregley_61
- Track 79 : Sarge_59
- Track 80 : MargaretKali_66, Kumotta_70
- Track 81 : Pigu_64
- Track 82 : Shoya_62, BrayBeast_62
- Track 83 : Sunshine23_54, Maruru_53
- Track 84 : Sonali_52
- Track 85 : Mufasa8_53
- Track 86 : GUPitcher_62
- Track 87 : Zucker_84
- Track 88 : Bauer_82
- Track 89 : BlackSpider_76
- Track 90 : Scotia_51
- Track 91 : NoSwimming_53
- Track 92 : Altostratus_62
- Track 93 : Khuang_63
- Track 94 : DelaGarza_42
- Track 95 : Wrackline_55
- Track 96 : Gingerbug_41
- Track 97 : Lesiram_43
- Track 98 : Teng_45
- Track 99 : MichelleMyBell_49
- Track 100 : Xavia_55
- Track 101 : Purky_56
- Track 102 : TurkishDelight_64

Summary of Final Annotations (See graph section above for start numbers):

The start number called the most often in the published annotations is 53, it was called in 170 of the 251 non-draft genes in the pham.

Genes that call this "Most Annotated" start:

- Ablatia_213, Ading_216, Adlitam_214, Alice_202, Amataga_216, ArcherS7_215, Asterius_211, Astraea_209, Atlantean_215, Audrick_217, Ava3_214, Babyland_218, BackyardAgain_211, BadAgartude_209, BananaFence_212, Bangla1971_215, Basquiat_212, BeanWater_207, Belieber_208, BigCity_224, Bigswole_220, Bipolarisk_213, Blackbrain_212, Blackdragon_210, Blubba_204, Bonray_217, Bread_210, Breeniome_214, Burrough_217, Bxz1_205, Cactojaque_210, Cali_208, Cane17_206, Capablanca_220, Caravan_206, Catera_207, Chargie21_212, CharlieB_209, ChaylaJr_213, ChickenPhender_211, Chomp_215, CindyLou_216, Colt_206, Concombre_220, DTDevon_217, Daffodil_220, Dandelion_223, Darko_214, Delilah_213, Delylah_217, Demodog_221, Derek_212, Dietrick_204, DirtMonster_208, Domi_209, DrPhinkDaddy_212, Drazdys_213, ET08_203, EasyJones_218, EggyFarm_224, EmToTheThree_215, EmmaElysia_219, Erdmann_216, ErnieJ_208, Essence_212, Ewok_214, Flabslab_210, Fludd_215, FoxtrotP1_213, FrayBell_218, FudgeTart_210, Gabriel_218, Gamgam_216, Ghost_215, Gizmo_221, Globfish_84, GlutenPhree_215, Grasshills_223, Grungle_199, Guwapp_210, Halldule_208, HyRo_203, I3_225, IkeLoa_207, InigoMontoya_218, InterFolia_218, Iota_210, Issimir_208, Izajani_213, JPickles_211, Janiyra_218, JayJay_213, Jaygup_211, Jedediah_215, Jemmno_214, Jessibeth14_215, Jezreel_212, JigglyPuff_222, JulietS_208, JustHall_209, Kamryn_214, Kboogie_219, Khaleesi_214, Koguma_214, LRRHood_208, Latch_215, Lee7_215, Lethe_217, LifeSavor_214, LinStu_214, Littleton_218, Loanshark_212, LolaVinca_213, LordLeafolot_217, Lukilu_206, Maby2021_215, Mangeria_216, Matsumoto_214, McGee_214, McWolfish_212, Megamind_212, Melpomini_210, MikeLiesIn_217, Mikro_211, MoMoMixon_213, Momo_216, Morizzled23_212, Naija_216, Napoleon13_212, Nappy_216, Naval22_220, NedWong_214, Ngannou_212, Nidhogg_216, NoodleTree_221, Norm_215, NuevoMundo_218, ParkTD_214, Patter_216, Phlegm_219, Phox_216, Phusco_213, Pier_216, Pinkcreek_199, Pio_223, Pivoine_216, Pleione_219, PurduePete_215, QBert_207, Quasimodo_217, Rabinovish_208, Rahel_216, Rizal_207, RoMag_210, Ronan_211, Roots515_217, SVoro_212, Salacia_215, Sauce_211, ScottMcG_209, Sebata_216, Shaq nato_206, Shelob_216, ShiaLabeouf_212, Shifa_192, Shnickers_213, Shrimp_217, SilverDipper_219, SmallFry_215, Spec_210, Specks_219, Sprinklers_213, Spud_209, SrishMeg2525_212, StephanieG_211, StubbySaigey_220, Stubby_199, Tainan_216, Teardrop_212, TinyTim_213, Tonenili_237, Tortoise16_213, Trinitium_211, Turret_208, Tyke_213, ValleyTerrace_216, Wally_213, Willis_216, Yassified_212, YemiJoy2021_216, YoungMoneyMata_214, Yucca_215, Zalkecks_214, Zeenon_217, ZygoTaiga_212,

Genes that have the "Most Annotated" start but do not call it:

- AdaS_81, Aikyam_84, Anekin_86, Auxilium_84, BenchScraper_86, Bhageatrice_92, BillyTP_87, BlackSpider_76, BlueShadow_91, CookieBear_82, EvePickles_87, Faja_87, Gorpy_83, Hestia_80, Hillester_90, Isolde_87, Lawnathon_87, MaterMagnus_86, MidnightRain_92, Phrank15_92, RadFad_91, Raphaella_86, Richie_89, Sakai_82, Seahorse_92, SpicyFrank_87, Tiff81_86, Vopal_87, Windest_89, YoungHarleezy_85,

Genes that do not have the "Most Annotated" start:

- AbbyDaisy_88, Abidatro_44, Altostratus_62, Amelia_43, AmiCi24_44, Andrew_46, Antrice_50, Atlantica_45, Basilisk_42, Bauer_82, Bedetta_48, Bible12_47,

BrayBeast_62, Brynnie_41, Camara_45, Catfish_57, Chickaboom_44, Colusalem_46, Coral_43, Cote_45, Daob_45, DelaGarza_42, DinoDaryn_57, Eesa_42, Fregley_61, GUPitcher_62, Galaxy_41, Gingerbug_41, Glotell_47, Goib_58, Gravel_52, HamCheese_44, HannahPhantana_44, Huffy_57, Jamun_42, Jerole_53, Juno112_44, KHumphrey_45, KendraB23_53, Kepler_45, Khuang_63, Kudrefre_85, Kuleana_45, Kumotta_70, Leona_44, Lesiram_43, LittleTokyo_43, Lunar_45, MalagasyRose_70, MargaretKali_66, Maruru_53, Melons_45, MichelleMyBell_49, Mufasa8_53, Neville_76, NoSwimming_53, Octobien14_83, Orcanus_43, Pelletreau_52, Persistence_79, PhluffyCoco_45, Pigu_64, Polka_43, Purky_56, Rabbitrun_79, Raqqa_86, Rattail_45, RedFox_45, Renna12_44, Ruchi_41, Sarge_59, Scotia_51, Sejanus_66, Sephiroth_83, Shoya_62, Shukran_82, Sonali_52, Splinter_57, Squiddly_91, StuartMinion_40, Sunshine23_54, Syleon_86, TZGordon_58, TaylorSipht_43, Teng_45, ThayneTheZag_91, Toad24_45, Trax_79, TurkishDelight_64, Vendetta_57, Vulpecula_41, Westrich_51, Wrackline_55, Xavia_55, Zhuangyuan_50, Zucker_84,

Summary by start number:

Start 12:

- Found in 1 of 321 (0.3%) of genes in pham
- Manual Annotations of this start: 1 of 251
- Called 100.0% of time when present
- Phage (with cluster) where this start called: TurkishDelight_64 (singleton),

Start 13:

- Found in 1 of 321 (0.3%) of genes in pham
- Manual Annotations of this start: 1 of 251
- Called 100.0% of time when present
- Phage (with cluster) where this start called: MalagasyRose_70 (AG),

Start 16:

- Found in 1 of 321 (0.3%) of genes in pham
- Manual Annotations of this start: 1 of 251
- Called 100.0% of time when present
- Phage (with cluster) where this start called: Mufasa8_53 (FG),

Start 17:

- Found in 3 of 321 (0.9%) of genes in pham
- Manual Annotations of this start: 1 of 251
- Called 33.3% of time when present
- Phage (with cluster) where this start called: Sonali_52 (FG),

Start 21:

- Found in 1 of 321 (0.3%) of genes in pham
- Manual Annotations of this start: 1 of 251
- Called 100.0% of time when present
- Phage (with cluster) where this start called: Catfish_57 (CU5),

Start 26:

- Found in 6 of 321 (1.9%) of genes in pham
- No Manual Annotations of this start.
- Called 33.3% of time when present
- Phage (with cluster) where this start called: Maruru_53 (FG), Sunshine23_54 (FG),

Start 29:

- Found in 47 of 321 (14.6%) of genes in pham
- Manual Annotations of this start: 28 of 251
- Called 85.1% of time when present
- Phage (with cluster) where this start called: Abidatro_44 (AS1), Amelia_43 (AS2), AmiCi24_44 (AS3), Andrew_46 (AS3), Basilisk_42 (AS1), Bedetta_48 (AS2), Bibble12_47 (AS2), Brynnie_41 (AS1), Chickaboom_44 (AS1), Colusalem_46 (AS2), Coral_43 (AS2), Cote_45 (AS2), Daob_45 (AS2), Eesa_42 (AS1), Galaxy_41 (AS1), Gravel_52 (AS1), HannahPhantana_44 (AS2), Jamun_42 (AS1), Jerole_53 (AS2), Juno112_44 (AS3), KendraB23_53 (AS1), Kepler_45 (AS2), Kuleana_45 (AS2), Leona_44 (AS3), LittleTokyo_43 (AS2), Lunar_45 (AS2), Melons_45 (AS2), Orcanus_43 (AS1), Pelletreau_52 (AS1), PhluffyCoco_45 (AS3), Polka_43 (AS2), RedFox_45 (AS3), Renna12_44 (AS3), Ruchi_41 (AS1), StuartMinion_40 (AS3), TaylorSipt_43 (AS1), Toad24_45 (AS1), Vulpecula_41 (AS1), Westrich_51 (AS1), Zhuangyuan_50 (AS2),

Start 34:

- Found in 2 of 321 (0.6%) of genes in pham
- Manual Annotations of this start: 2 of 251
- Called 100.0% of time when present
- Phage (with cluster) where this start called: Purky_56 (P6), Sejanus_66 (AD),

Start 36:

- Found in 5 of 321 (1.6%) of genes in pham
- Manual Annotations of this start: 5 of 251
- Called 100.0% of time when present
- Phage (with cluster) where this start called: DinoDaryn_57 (CU1), Huffy_57 (CU1), Splinter_57 (CU1), TZGordon_58 (CU1), Vendetta_57 (CU1),

Start 37:

- Found in 198 of 321 (61.7%) of genes in pham
- Manual Annotations of this start: 2 of 251
- Called 1.0% of time when present
- Phage (with cluster) where this start called: MichelleMyBell_49 (N), Xavia_55 (P3),

Start 38:

- Found in 4 of 321 (1.2%) of genes in pham
- No Manual Annotations of this start.
- Called 25.0% of time when present
- Phage (with cluster) where this start called: Pigu_64 (FB),

Start 40:

- Found in 47 of 321 (14.6%) of genes in pham
- Manual Annotations of this start: 1 of 251
- Called 14.9% of time when present
- Phage (with cluster) where this start called: Antrice_50 (AS2), Atlantica_45 (AS3), Camara_45 (AS3), Glotell_47 (AS3), HamCheese_44 (AS3), KHumphrey_45 (AS3), Rattail_45 (AS3),

Start 44:

- Found in 4 of 321 (1.2%) of genes in pham
- Manual Annotations of this start: 1 of 251

- Called 25.0% of time when present
- Phage (with cluster) where this start called: Goib_58 (CU1),

Start 45:

- Found in 6 of 321 (1.9%) of genes in pham
- Manual Annotations of this start: 3 of 251
- Called 66.7% of time when present
- Phage (with cluster) where this start called: DelaGarza_42 (GF), Gingerbug_41 (GF), Lesiram_43 (GF), Teng_45 (GF),

Start 46:

- Found in 3 of 321 (0.9%) of genes in pham
- Manual Annotations of this start: 3 of 251
- Called 100.0% of time when present
- Phage (with cluster) where this start called: BrayBeast_62 (FB), Sarge_59 (FB), Shoya_62 (FB),

Start 47:

- Found in 10 of 321 (3.1%) of genes in pham
- Manual Annotations of this start: 1 of 251
- Called 50.0% of time when present
- Phage (with cluster) where this start called: Altostratus_62 (FS), Khuang_63 (FS), Persistence_79 (AY), Shukran_82 (AY), Wrackline_55 (GF),

Start 48:

- Found in 7 of 321 (2.2%) of genes in pham
- Manual Annotations of this start: 4 of 251
- Called 85.7% of time when present
- Phage (with cluster) where this start called: Neville_76 (DU2), NoSwimming_53 (FO), Rabbitrun_79 (DU2), Scotia_51 (FO), Squiddly_91 (DN2), Trax_79 (DU2),

Start 49:

- Found in 33 of 321 (10.3%) of genes in pham
- Manual Annotations of this start: 17 of 251
- Called 93.9% of time when present
- Phage (with cluster) where this start called: AdaS_81 (AY), Aikyam_84 (AY), Anekin_86 (AY), Auxilium_84 (AY), BenchScraper_86 (AY), Bhageatrice_92 (AY), BillyTP_87 (AY), BlackSpider_76 (FN), BlueShadow_91 (AY), CookieBear_82 (AY), EvePickles_87 (AY), Faja_87 (AY), Fregley_61 (EG), Gorpy_83 (AY), Hestia_80 (AY), Hillester_90 (AY), Isolde_87 (AY), Lawnathon_87 (AY), MaterMagnus_86 (AY), MidnightRain_92 (AY), Phrank15_92 (AY), RadFad_91 (AY), Raphaella_86 (AY), Richie_89 (AY), Sakai_82 (AY), Seahorse_92 (AY), SpicyFrank_87 (AY), Tiff81_86 (AY), Vopal_87 (AY), Windest_89 (AY), YoungHarleezy_85 (AY),

Start 50:

- Found in 1 of 321 (0.3%) of genes in pham
- No Manual Annotations of this start.
- Called 100.0% of time when present
- Phage (with cluster) where this start called: GUPitcher_62 (FJ),

Start 51:

- Found in 5 of 321 (1.6%) of genes in pham
- Manual Annotations of this start: 3 of 251

- Called 100.0% of time when present
- Phage (with cluster) where this start called: AbbyDaisy_88 (AY), Bauer_82 (FN), Raqqa_86 (AY), ThayneTheZag_91 (AY), Zucker_84 (FN),

Start 52:

- Found in 4 of 321 (1.2%) of genes in pham
- Manual Annotations of this start: 4 of 251
- Called 100.0% of time when present
- Phage (with cluster) where this start called: Kudrefre_85 (DU1), Octobien14_83 (DU1), Sephiroth_83 (DU1), Syleon_86 (DU1),

Start 53:

- Found in 225 of 321 (70.1%) of genes in pham
- Manual Annotations of this start: 170 of 251
- Called 86.7% of time when present
- Phage (with cluster) where this start called: Ablatia_213 (C1), Ading_216 (C1), Adlitam_214 (C1), Alice_202 (C1), Amataga_216 (C1), ArcherS7_215 (C1), Asterius_211 (C1), Astraea_209 (C1), Atlantean_215 (C1), Audrick_217 (C1), Ava3_214 (C1), Babyland_218 (C1), BackyardAgain_211 (C1), BadAgartude_209 (C1), BananaFence_212 (C1), Bangla1971_215 (C1), Basquiat_212 (C1), BeanWater_207 (C1), Belieber_208 (C1), BigCity_224 (C1), Bigswole_220 (C1), Bipolarisk_213 (C1), Blackbrain_212 (C1), Blackdragon_210 (C1), Blubba_204 (C1), Bonray_217 (C1), Bread_210 (C1), Breeniome_214 (C1), Burrough_217 (C1), Bxz1_205 (C1), Cactojaque_210 (C1), Cali_208 (C1), Cane17_206 (C1), Capablanca_220 (C1), Caravan_206 (C1), Catera_207 (C1), Chargie21_212 (C1), CharlieB_209 (C1), ChaylaJr_213 (C1), ChickenPhender_211 (C1), Chomp_215 (C1), CindyLou_216 (C1), Colt_206 (C1), Concombre_220 (C1), DTDevon_217 (C1), Daffodil_220 (C1), Dandelion_223 (C1), Darko_214 (C1), Delilah_213 (C1), Delylah_217 (C1), Demodog_221 (C1), Derek_212 (C1), Dietrick_204 (C1), DirtMonster_208 (C1), Domi_209 (C1), DrPhinkDaddy_212 (C1), Drazdys_213 (C1), ET08_203 (C1), EasyJones_218 (C1), EggyFarm_224 (C1), EmToTheThree_215 (C1), EmmaElysia_219 (C1), Erdmann_216 (C1), ErnieJ_208 (C1), Essence_212 (C1), Ewok_214 (C1), Flabslab_210 (C1), Fludd_215 (C1), FoxtrotP1_213 (C1), FrayBell_218 (C1), FudgeTart_210 (C1), Gabriel_218 (C1), Gamgam_216 (C1), Ghost_215 (C1), Gizmo_221 (C1), Globfish_84 (AY), GlutenPhree_215 (C1), Grasshills_223 (C1), Grungle_199 (C1), Guwapp_210 (C1), Halldule_208 (C1), HyRo_203 (C1), I3_225 (C1), IkeLoa_207 (C1), InigoMontoya_218 (C1), InterFolia_218 (C1), Iota_210 (C1), Issimir_208 (C1), Izajani_213 (C1), JPickles_211 (C1), Janiyra_218 (C1), JayJay_213 (C1), Jaygup_211 (C1), Jedediah_215 (C1), Jemmno_214 (C1), Jessibeth14_215 (C1), Jezreel_212 (C1), JigglyPuff_222 (C1), JulietS_208 (C1), JustHall_209 (C1), Kamryn_214 (C1), Kboogie_219 (C1), Khaleesi_214 (C1), Koguma_214 (C1), LRRHood_208 (C1), Latch_215 (C1), Lee7_215 (C1), Lethe_217 (C1), LifeSavor_214 (C1), LinStu_214 (C1), Littleton_218 (C1), Loanshark_212 (C1), LolaVinca_213 (C1), LordLeafolot_217 (C1), Lukilu_206 (C1), Maby2021_215 (C1), Mangeria_216 (C1), Matsumoto_214 (C1), McGee_214 (C1), McWolfish_212 (C1), Megamind_212 (C1), Melpomini_210 (C1), MikeLiesIn_217 (C1), Mikro_211 (C1), MoMoMixon_213 (C1), Momo_216 (C1), Morizzled23_212 (C1), Naija_216 (C1), Napoleon13_212 (C1), Nappy_216 (C1), Naval22_220 (C1), NedWong_214 (C1), Ngannou_212 (C1), Nidhogg_216 (C1), NoodleTree_221 (C1), Norm_215 (C1), NuevoMundo_218 (C1), ParkTD_214 (C1), Patter_216 (C1), Phlegm_219 (C1), Phox_216 (C1), Phusco_213 (C1), Pier_216 (C1), Pinkcreek_199 (C1), Pio_223 (C1), Pivoine_216 (C1), Pleione_219 (C1), PurduePete_215 (C1), QBert_207 (C1), Quasimodo_217 (C1), Rabinovish_208 (C1),

Rahel_216 (C1), Rizal_207 (C1), RoMag_210 (C1), Ronan_211 (C1), Roots515_217 (C1), SVoro_212 (C1), Salacia_215 (C1), Sauce_211 (C1), ScottMcG_209 (C1), Sebata_216 (C1), Shaqnato_206 (C1), Shelob_216 (C1), ShiaLabeouf_212 (C1), Shifa_192 (C1), Shnickers_213 (C1), Shrimp_217 (C1), SilverDipper_219 (C1), SmallFry_215 (C1), Spec_210 (C1), Specks_219 (C1), Sprinklers_213 (C1), Spud_209 (C1), SrishMeg2525_212 (C1), StephanieG_211 (C1), StubbySaigey_220 (C1), Stubby_199 (C1), Tainan_216 (C1), Teardrop_212 (C1), TinyTim_213 (C1), Tonenili_237 (C1), Tortoise16_213 (C1), Trinitium_211 (C1), Turret_208 (C1), Tyke_213 (C1), ValleyTerrace_216 (C1), Wally_213 (C1), Willis_216 (C1), Yassified_212 (C1), YemiJoy2021_216 (C1), YoungMoneyMata_214 (C1), Yucca_215 (C1), Zalkecks_214 (C1), Zeenon_217 (C1), ZygoTaiga_212 (C1),

Start 54:

- Found in 2 of 321 (0.6%) of genes in pham
- Manual Annotations of this start: 2 of 251
- Called 100.0% of time when present
- Phage (with cluster) where this start called: Kumotta_70 (FB), MargaretKali_66 (FB),

Summary by clusters:

There are 24 clusters represented in this pham: singleton, FS, AS2, FB, FG, FJ, FN, FO, CU5, CU1, DN2, DU1, DU2, AS3, P3, AS1, P6, AD, AG, EG, N, GF, AY, C1,

Info for manual annotations of cluster AD:

- Start number 34 was manually annotated 1 time for cluster AD.

Info for manual annotations of cluster AG:

- Start number 13 was manually annotated 1 time for cluster AG.

Info for manual annotations of cluster AS1:

- Start number 29 was manually annotated 11 times for cluster AS1.

Info for manual annotations of cluster AS2:

- Start number 29 was manually annotated 11 times for cluster AS2.

Info for manual annotations of cluster AS3:

- Start number 29 was manually annotated 6 times for cluster AS3.
- Start number 40 was manually annotated 1 time for cluster AS3.

Info for manual annotations of cluster AY:

- Start number 47 was manually annotated 1 time for cluster AY.
- Start number 49 was manually annotated 16 times for cluster AY.
- Start number 51 was manually annotated 1 time for cluster AY.

Info for manual annotations of cluster C1:

- Start number 53 was manually annotated 170 times for cluster C1.

Info for manual annotations of cluster CU1:

- Start number 36 was manually annotated 5 times for cluster CU1.
- Start number 44 was manually annotated 1 time for cluster CU1.

Info for manual annotations of cluster CU5:

- Start number 21 was manually annotated 1 time for cluster CU5.

Info for manual annotations of cluster DN2:

- Start number 48 was manually annotated 1 time for cluster DN2.

Info for manual annotations of cluster DU1:

- Start number 52 was manually annotated 4 times for cluster DU1.

Info for manual annotations of cluster DU2:

- Start number 48 was manually annotated 3 times for cluster DU2.

Info for manual annotations of cluster EG:

- Start number 49 was manually annotated 1 time for cluster EG.

Info for manual annotations of cluster FB:

- Start number 46 was manually annotated 3 times for cluster FB.
- Start number 54 was manually annotated 2 times for cluster FB.

Info for manual annotations of cluster FG:

- Start number 16 was manually annotated 1 time for cluster FG.
- Start number 17 was manually annotated 1 time for cluster FG.

Info for manual annotations of cluster FN:

- Start number 51 was manually annotated 2 times for cluster FN.

Info for manual annotations of cluster GF:

- Start number 45 was manually annotated 3 times for cluster GF.

Info for manual annotations of cluster N:

- Start number 37 was manually annotated 1 time for cluster N.

Info for manual annotations of cluster P3:

- Start number 37 was manually annotated 1 time for cluster P3.

Info for manual annotations of cluster P6:

- Start number 34 was manually annotated 1 time for cluster P6.

Gene Information:

Gene: AbbyDaisy_88 Start: 50419, Stop: 50823, Start Num: 51

Candidate Starts for AbbyDaisy_88:

(Start: 45 @50407 has 3 MA's), (Start: 51 @50419 has 3 MA's), (69, 50476), (78, 50500), (104, 50590), (105, 50596), (123, 50692), (139, 50743), (151, 50788),

Gene: Abidatro_44 Start: 29002, Stop: 29472, Start Num: 29

Candidate Starts for Abidatro_44:

(Start: 29 @29002 has 28 MA's), (Start: 40 @29038 has 1 MA's), (42, 29044), (60, 29095), (77, 29140), (96, 29200), (101, 29218), (108, 29254), (127, 29353), (138, 29395), (147, 29434), (149, 29440), (156, 29461),

Gene: Ablatia_213 Start: 119512, Stop: 119967, Start Num: 53

Candidate Starts for Ablatia_213:

(20, 119398), (30, 119461), (Start: 37 @119479 has 2 MA's), (Start: 53 @119512 has 170 MA's), (59, 119530), (91, 119662), (96, 119680), (109, 119740), (127, 119848), (132, 119872), (149, 119935), (152, 119941),

Gene: AdaS_81 Start: 45341, Stop: 45766, Start Num: 49

Candidate Starts for AdaS_81:

(19, 45236), (Start: 49 @45341 has 17 MA's), (Start: 53 @45353 has 170 MA's), (59, 45368), (63, 45398), (69, 45404), (78, 45428), (119, 45596), (121, 45608), (130, 45653),

Gene: Ading_216 Start: 121132, Stop: 121587, Start Num: 53

Candidate Starts for Ading_216:

(20, 121018), (30, 121081), (Start: 37 @121099 has 2 MA's), (Start: 53 @121132 has 170 MA's), (59, 121150), (91, 121282), (96, 121300), (109, 121360), (127, 121468), (132, 121492), (149, 121555), (152, 121561),

Gene: Adlitam_214 Start: 119736, Stop: 120191, Start Num: 53

Candidate Starts for Adlitam_214:

(20, 119622), (30, 119685), (Start: 37 @119703 has 2 MA's), (Start: 53 @119736 has 170 MA's), (59, 119754), (91, 119886), (96, 119904), (109, 119964), (127, 120072), (132, 120096), (149, 120159), (152, 120165),

Gene: Aikyam_84 Start: 46399, Stop: 46830, Start Num: 49

Candidate Starts for Aikyam_84:

(19, 46294), (Start: 49 @46399 has 17 MA's), (Start: 53 @46411 has 170 MA's), (59, 46426), (63, 46456), (69, 46462), (78, 46486), (151, 46789),

Gene: Alice_202 Start: 118711, Stop: 119166, Start Num: 53

Candidate Starts for Alice_202:

(20, 118597), (30, 118660), (Start: 37 @118678 has 2 MA's), (Start: 53 @118711 has 170 MA's), (59, 118729), (91, 118861), (96, 118879), (109, 118939), (127, 119047), (132, 119071), (149, 119134), (152, 119140),

Gene: Altostratus_62 Start: 36693, Stop: 37115, Start Num: 47

Candidate Starts for Altostratus_62:

(Start: 47 @36693 has 1 MA's), (78, 36783), (81, 36789), (102, 36867), (127, 37005),

Gene: Amataga_216 Start: 119548, Stop: 120003, Start Num: 53

Candidate Starts for Amataga_216:

(20, 119434), (30, 119497), (Start: 37 @119515 has 2 MA's), (Start: 53 @119548 has 170 MA's), (59, 119566), (91, 119698), (96, 119716), (109, 119776), (127, 119884), (132, 119908), (149, 119971), (152, 119977),

Gene: Amelia_43 Start: 27285, Stop: 27752, Start Num: 29

Candidate Starts for Amelia_43:

(19, 27228), (Start: 29 @27285 has 28 MA's), (Start: 40 @27321 has 1 MA's), (61, 27381), (80, 27432), (85, 27447), (96, 27483), (113, 27561), (116, 27573), (127, 27633), (132, 27657), (145, 27708), (147, 27714), (155, 27735), (156, 27741),

Gene: AmiCi24_44 Start: 28339, Stop: 28809, Start Num: 29

Candidate Starts for AmiCi24_44:

(Start: 29 @28339 has 28 MA's), (Start: 40 @28375 has 1 MA's), (66, 28456), (77, 28480), (85, 28504), (93, 28528), (96, 28540), (99, 28549), (101, 28558), (108, 28594), (116, 28630), (118, 28642), (121, 28663), (123, 28675), (133, 28717), (145, 28765), (148, 28774),

Gene: Andrew_46 Start: 28224, Stop: 28688, Start Num: 29

Candidate Starts for Andrew_46:

(Start: 29 @28224 has 28 MA's), (61, 28320), (77, 28365), (96, 28425), (118, 28524), (121, 28545), (127, 28572), (145, 28647), (148, 28656), (153, 28668),

Gene: Anekin_86 Start: 48622, Stop: 49053, Start Num: 49

Candidate Starts for Anekin_86:

(19, 48517), (Start: 49 @48622 has 17 MA's), (Start: 53 @48634 has 170 MA's), (59, 48649), (63, 48679), (69, 48685), (78, 48709), (151, 49012),

Gene: Antrice_50 Start: 28494, Stop: 28919, Start Num: 40

Candidate Starts for Antrice_50:

(Start: 29 @28458 has 28 MA's), (Start: 40 @28494 has 1 MA's), (42, 28500), (77, 28599), (80, 28608), (85, 28623), (98, 28671), (118, 28764), (121, 28785), (131, 28833), (132, 28836), (134, 28842), (153, 28908),

Gene: ArcherS7_215 Start: 120590, Stop: 121045, Start Num: 53

Candidate Starts for ArcherS7_215:

(20, 120476), (30, 120539), (Start: 37 @120557 has 2 MA's), (Start: 53 @120590 has 170 MA's), (59, 120608), (91, 120740), (96, 120758), (109, 120818), (127, 120926), (132, 120950), (149, 121013), (152, 121019),

Gene: Asterius_211 Start: 119957, Stop: 120412, Start Num: 53

Candidate Starts for Asterius_211:

(20, 119843), (30, 119906), (Start: 37 @119924 has 2 MA's), (Start: 53 @119957 has 170 MA's), (59, 119975), (91, 120107), (96, 120125), (109, 120185), (127, 120293), (132, 120317), (149, 120380), (152, 120386),

Gene: Astraea_209 Start: 119152, Stop: 119607, Start Num: 53

Candidate Starts for Astraea_209:

(20, 119038), (30, 119101), (Start: 37 @119119 has 2 MA's), (Start: 53 @119152 has 170 MA's), (59, 119170), (91, 119302), (96, 119320), (109, 119380), (127, 119488), (132, 119512), (149, 119575), (152, 119581),

Gene: Atlantean_215 Start: 119548, Stop: 120003, Start Num: 53

Candidate Starts for Atlantean_215:

(20, 119434), (30, 119497), (Start: 37 @119515 has 2 MA's), (Start: 53 @119548 has 170 MA's), (59, 119566), (91, 119698), (96, 119716), (109, 119776), (127, 119884), (132, 119908), (149, 119971), (152, 119977),

Gene: Atlantica_45 Start: 28377, Stop: 28811, Start Num: 40

Candidate Starts for Atlantica_45:

(Start: 29 @28341 has 28 MA's), (Start: 40 @28377 has 1 MA's), (66, 28458), (77, 28482), (85, 28506), (93, 28530), (96, 28542), (99, 28551), (101, 28560), (108, 28596), (116, 28632), (118, 28644), (121, 28665), (123, 28677), (133, 28719), (145, 28767), (148, 28776),

Gene: Audrick_217 Start: 119438, Stop: 119893, Start Num: 53

Candidate Starts for Audrick_217:

(20, 119324), (30, 119387), (Start: 37 @119405 has 2 MA's), (Start: 53 @119438 has 170 MA's), (59, 119456), (91, 119588), (96, 119606), (109, 119666), (127, 119774), (132, 119798), (149, 119861), (152, 119867),

Gene: Auxilium_84 Start: 46039, Stop: 46461, Start Num: 49

Candidate Starts for Auxilium_84:

(Start: 49 @46039 has 17 MA's), (Start: 53 @46048 has 170 MA's), (59, 46063), (63, 46093), (69, 46099), (78, 46123), (151, 46426),

Gene: Ava3_214 Start: 119982, Stop: 120437, Start Num: 53

Candidate Starts for Ava3_214:

(20, 119868), (30, 119931), (Start: 37 @119949 has 2 MA's), (Start: 53 @119982 has 170 MA's), (59, 120000), (91, 120132), (96, 120150), (109, 120210), (127, 120318), (132, 120342), (149, 120405), (152, 120411),

Gene: Babyland_218 Start: 120325, Stop: 120780, Start Num: 53

Candidate Starts for Babyland_218:

(20, 120211), (30, 120274), (Start: 37 @120292 has 2 MA's), (Start: 53 @120325 has 170 MA's), (59, 120343), (91, 120475), (96, 120493), (109, 120553), (127, 120661), (132, 120685), (149, 120748), (152, 120754),

Gene: BackyardAgain_211 Start: 117513, Stop: 117968, Start Num: 53

Candidate Starts for BackyardAgain_211:

(20, 117399), (30, 117462), (Start: 37 @117480 has 2 MA's), (Start: 53 @117513 has 170 MA's), (59, 117531), (91, 117663), (96, 117681), (109, 117741), (127, 117849), (132, 117873), (149, 117936), (152, 117942),

Gene: BadAgartude_209 Start: 119650, Stop: 120105, Start Num: 53

Candidate Starts for BadAgartude_209:

(20, 119536), (30, 119599), (Start: 37 @119617 has 2 MA's), (Start: 53 @119650 has 170 MA's), (59, 119668), (91, 119800), (96, 119818), (109, 119878), (127, 119986), (132, 120010), (149, 120073), (152, 120079),

Gene: BananaFence_212 Start: 119781, Stop: 120236, Start Num: 53

Candidate Starts for BananaFence_212:

(20, 119667), (30, 119730), (Start: 37 @119748 has 2 MA's), (Start: 53 @119781 has 170 MA's), (59, 119799), (91, 119931), (96, 119949), (109, 120009), (127, 120117), (132, 120141), (149, 120204), (152, 120210),

Gene: Bangla1971_215 Start: 119554, Stop: 120009, Start Num: 53

Candidate Starts for Bangla1971_215:

(20, 119440), (30, 119503), (Start: 37 @119521 has 2 MA's), (Start: 53 @119554 has 170 MA's), (59, 119572), (91, 119704), (96, 119722), (109, 119782), (127, 119890), (132, 119914), (149, 119977), (152, 119983),

Gene: Basilisk_42 Start: 28172, Stop: 28642, Start Num: 29

Candidate Starts for Basilisk_42:

(Start: 29 @28172 has 28 MA's), (Start: 40 @28208 has 1 MA's), (42, 28214), (61, 28268), (77, 28310), (83, 28331), (88, 28349), (96, 28370), (101, 28388), (108, 28424), (127, 28523), (132, 28547), (138, 28565), (149, 28610), (156, 28631),

Gene: Basquiat_212 Start: 118067, Stop: 118522, Start Num: 53

Candidate Starts for Basquiat_212:

(20, 117953), (30, 118016), (Start: 37 @118034 has 2 MA's), (Start: 53 @118067 has 170 MA's), (59, 118085), (91, 118217), (96, 118235), (109, 118295), (127, 118403), (132, 118427), (149, 118490), (152, 118496),

Gene: Bauer_82 Start: 45126, Stop: 45530, Start Num: 51

Candidate Starts for Bauer_82:

(38, 45099), (Start: 45 @45114 has 3 MA's), (Start: 51 @45126 has 3 MA's), (69, 45183), (78, 45207), (104, 45297), (116, 45354), (123, 45399), (139, 45450), (151, 45495),

Gene: BeanWater_207 Start: 118593, Stop: 119048, Start Num: 53

Candidate Starts for BeanWater_207:

(20, 118479), (30, 118542), (Start: 37 @118560 has 2 MA's), (Start: 53 @118593 has 170 MA's), (59, 118611), (91, 118743), (96, 118761), (109, 118821), (127, 118929), (132, 118953), (149, 119016), (152, 119022),

Gene: Bedetta_48 Start: 27432, Stop: 27899, Start Num: 29

Candidate Starts for Bedetta_48:

(19, 27375), (Start: 29 @27432 has 28 MA's), (Start: 40 @27468 has 1 MA's), (61, 27528), (80, 27579), (85, 27594), (96, 27630), (113, 27708), (116, 27720), (127, 27780), (132, 27804), (145, 27855), (147, 27861), (155, 27882), (156, 27888),

Gene: Belieber_208 Start: 117381, Stop: 117836, Start Num: 53

Candidate Starts for Belieber_208:

(20, 117267), (30, 117330), (Start: 37 @117348 has 2 MA's), (Start: 53 @117381 has 170 MA's), (59, 117399), (91, 117531), (96, 117549), (109, 117609), (127, 117717), (132, 117741), (149, 117804), (152, 117810),

Gene: BenchScraper_86 Start: 46987, Stop: 47412, Start Num: 49

Candidate Starts for BenchScraper_86:

(33, 46957), (Start: 49 @46987 has 17 MA's), (Start: 53 @46999 has 170 MA's), (59, 47014), (63, 47044), (69, 47050), (78, 47074), (104, 47164), (151, 47377),

Gene: Bhageatrice_92 Start: 51263, Stop: 51688, Start Num: 49

Candidate Starts for Bhageatrice_92:

(Start: 49 @51263 has 17 MA's), (Start: 53 @51275 has 170 MA's), (59, 51290), (63, 51320), (69, 51326), (78, 51350), (104, 51440), (151, 51653),

Gene: Bible12_47 Start: 27280, Stop: 27747, Start Num: 29

Candidate Starts for Bible12_47:

(19, 27223), (Start: 29 @27280 has 28 MA's), (Start: 40 @27316 has 1 MA's), (61, 27376), (80, 27427), (85, 27442), (96, 27478), (113, 27556), (116, 27568), (127, 27628), (132, 27652), (145, 27703), (147, 27709), (155, 27730), (156, 27736),

Gene: BigCity_224 Start: 122164, Stop: 122619, Start Num: 53

Candidate Starts for BigCity_224:

(20, 122050), (30, 122113), (Start: 37 @122131 has 2 MA's), (39, 122134), (Start: 53 @122164 has 170 MA's), (59, 122182), (91, 122314), (96, 122332), (109, 122392), (127, 122500), (132, 122524), (149, 122587), (152, 122593),

Gene: Bigswole_220 Start: 122018, Stop: 122473, Start Num: 53

Candidate Starts for Bigswole_220:

(20, 121904), (30, 121967), (Start: 37 @121985 has 2 MA's), (Start: 53 @122018 has 170 MA's), (59, 122036), (91, 122168), (96, 122186), (109, 122246), (127, 122354), (132, 122378), (149, 122441),

(152, 122447),

Gene: BillyTP_87 Start: 49093, Stop: 49518, Start Num: 49

Candidate Starts for BillyTP_87:

(33, 49063), (Start: 49 @49093 has 17 MA's), (Start: 53 @49105 has 170 MA's), (59, 49120), (63, 49150), (69, 49156), (78, 49180), (104, 49270), (123, 49372), (151, 49483),

Gene: Bipolarisk_213 Start: 120251, Stop: 120706, Start Num: 53

Candidate Starts for Bipolarisk_213:

(20, 120137), (30, 120200), (Start: 37 @120218 has 2 MA's), (Start: 53 @120251 has 170 MA's), (59, 120269), (91, 120401), (96, 120419), (109, 120479), (127, 120587), (132, 120611), (149, 120674), (152, 120680),

Gene: BlackSpider_76 Start: 45516, Stop: 45926, Start Num: 49

Candidate Starts for BlackSpider_76:

(19, 45411), (Start: 44 @45513 has 1 MA's), (Start: 49 @45516 has 17 MA's), (Start: 53 @45528 has 170 MA's), (59, 45543), (63, 45573), (69, 45579), (78, 45603), (104, 45693), (105, 45699), (109, 45711), (116, 45750), (120, 45774), (122, 45786), (149, 45888), (155, 45903),

Gene: Blackbrain_212 Start: 119152, Stop: 119607, Start Num: 53

Candidate Starts for Blackbrain_212:

(20, 119038), (30, 119101), (Start: 37 @119119 has 2 MA's), (Start: 53 @119152 has 170 MA's), (59, 119170), (91, 119302), (96, 119320), (109, 119380), (127, 119488), (132, 119512), (149, 119575), (152, 119581),

Gene: Blackdragon_210 Start: 119884, Stop: 120339, Start Num: 53

Candidate Starts for Blackdragon_210:

(20, 119770), (30, 119833), (Start: 37 @119851 has 2 MA's), (Start: 53 @119884 has 170 MA's), (59, 119902), (91, 120034), (96, 120052), (109, 120112), (127, 120220), (132, 120244), (149, 120307), (152, 120313),

Gene: Blubba_204 Start: 123233, Stop: 123688, Start Num: 53

Candidate Starts for Blubba_204:

(20, 123119), (30, 123182), (Start: 37 @123200 has 2 MA's), (Start: 53 @123233 has 170 MA's), (59, 123251), (91, 123383), (96, 123401), (109, 123461), (127, 123569), (132, 123593), (149, 123656),

Gene: BlueShadow_91 Start: 48348, Stop: 48779, Start Num: 49

Candidate Starts for BlueShadow_91:

(33, 48318), (Start: 49 @48348 has 17 MA's), (Start: 53 @48360 has 170 MA's), (59, 48375), (63, 48405), (69, 48411), (78, 48435), (95, 48483), (118, 48594), (151, 48738),

Gene: Bonray_217 Start: 121653, Stop: 122108, Start Num: 53

Candidate Starts for Bonray_217:

(20, 121539), (30, 121602), (Start: 37 @121620 has 2 MA's), (Start: 53 @121653 has 170 MA's), (59, 121671), (91, 121803), (96, 121821), (109, 121881), (127, 121989), (132, 122013), (149, 122076), (152, 122082),

Gene: BrayBeast_62 Start: 35523, Stop: 35936, Start Num: 46

Candidate Starts for BrayBeast_62:

(25, 35457), (Start: 46 @35523 has 3 MA's), (81, 35619), (103, 35709), (132, 35859),

Gene: Bread_210 Start: 119651, Stop: 120106, Start Num: 53

Candidate Starts for Bread_210:

(20, 119537), (30, 119600), (Start: 37 @119618 has 2 MA's), (Start: 53 @119651 has 170 MA's), (59, 119669), (91, 119801), (96, 119819), (109, 119879), (127, 119987), (132, 120011), (149, 120074), (152, 120080),

Gene: Breeniome_214 Start: 119105, Stop: 119560, Start Num: 53

Candidate Starts for Breeniome_214:

(20, 118991), (30, 119054), (Start: 37 @119072 has 2 MA's), (Start: 53 @119105 has 170 MA's), (59, 119123), (91, 119255), (96, 119273), (109, 119333), (127, 119441), (132, 119465), (149, 119528), (152, 119534),

Gene: Brynnie_41 Start: 28050, Stop: 28520, Start Num: 29

Candidate Starts for Brynnie_41:

(Start: 29 @28050 has 28 MA's), (Start: 40 @28086 has 1 MA's), (42, 28092), (61, 28146), (77, 28188), (88, 28227), (96, 28248), (101, 28266), (108, 28302), (127, 28401), (132, 28425), (138, 28443), (149, 28488), (156, 28509),

Gene: Burrough_217 Start: 121421, Stop: 121876, Start Num: 53

Candidate Starts for Burrough_217:

(20, 121307), (30, 121370), (Start: 37 @121388 has 2 MA's), (Start: 53 @121421 has 170 MA's), (59, 121439), (91, 121571), (96, 121589), (109, 121649), (127, 121757), (132, 121781), (149, 121844), (152, 121850),

Gene: Bxz1_205 Start: 121627, Stop: 122082, Start Num: 53

Candidate Starts for Bxz1_205:

(20, 121513), (30, 121576), (Start: 37 @121594 has 2 MA's), (Start: 53 @121627 has 170 MA's), (59, 121645), (91, 121777), (96, 121795), (109, 121855), (127, 121963), (132, 121987), (149, 122050), (152, 122056),

Gene: Cactojaque_210 Start: 118087, Stop: 118542, Start Num: 53

Candidate Starts for Cactojaque_210:

(20, 117973), (30, 118036), (Start: 37 @118054 has 2 MA's), (Start: 53 @118087 has 170 MA's), (59, 118105), (91, 118237), (96, 118255), (109, 118315), (127, 118423), (132, 118447), (149, 118510), (152, 118516),

Gene: Cali_208 Start: 120034, Stop: 120489, Start Num: 53

Candidate Starts for Cali_208:

(20, 119920), (30, 119983), (Start: 37 @120001 has 2 MA's), (Start: 53 @120034 has 170 MA's), (59, 120052), (91, 120184), (96, 120202), (109, 120262), (127, 120370), (132, 120394), (149, 120457), (152, 120463),

Gene: Camara_45 Start: 28277, Stop: 28711, Start Num: 40

Candidate Starts for Camara_45:

(Start: 29 @28241 has 28 MA's), (Start: 40 @28277 has 1 MA's), (66, 28358), (77, 28382), (85, 28406), (93, 28430), (96, 28442), (99, 28451), (101, 28460), (108, 28496), (116, 28532), (118, 28544), (121, 28565), (123, 28577), (133, 28619), (145, 28667), (148, 28676),

Gene: Cane17_206 Start: 123642, Stop: 124097, Start Num: 53

Candidate Starts for Cane17_206:

(20, 123528), (30, 123591), (Start: 37 @123609 has 2 MA's), (Start: 53 @123642 has 170 MA's), (59, 123660), (91, 123792), (96, 123810), (109, 123870), (127, 123978), (132, 124002), (149, 124065),

Gene: Capablanca_220 Start: 122248, Stop: 122703, Start Num: 53

Candidate Starts for Capablanca_220:

(20, 122134), (30, 122197), (Start: 37 @122215 has 2 MA's), (Start: 53 @122248 has 170 MA's), (59, 122266), (91, 122398), (96, 122416), (109, 122476), (127, 122584), (132, 122608), (149, 122671), (152, 122677),

Gene: Caravan_206 Start: 120368, Stop: 120823, Start Num: 53

Candidate Starts for Caravan_206:

(20, 120254), (30, 120317), (Start: 37 @120335 has 2 MA's), (Start: 53 @120368 has 170 MA's), (59, 120386), (91, 120518), (96, 120536), (109, 120596), (127, 120704), (132, 120728), (149, 120791), (152, 120797),

Gene: Catera_207 Start: 118761, Stop: 119216, Start Num: 53

Candidate Starts for Catera_207:

(20, 118647), (30, 118710), (Start: 37 @118728 has 2 MA's), (Start: 53 @118761 has 170 MA's), (59, 118779), (91, 118911), (96, 118929), (109, 118989), (127, 119097), (132, 119121), (149, 119184), (152, 119190),

Gene: Catfish_57 Start: 38946, Stop: 39467, Start Num: 21

Candidate Starts for Catfish_57:

(Start: 21 @38946 has 1 MA's), (23, 38952), (55, 39051), (59, 39063), (77, 39117), (106, 39234), (109, 39243), (115, 39279),

Gene: Chargie21_212 Start: 118067, Stop: 118522, Start Num: 53

Candidate Starts for Chargie21_212:

(20, 117953), (30, 118016), (Start: 37 @118034 has 2 MA's), (Start: 53 @118067 has 170 MA's), (59, 118085), (91, 118217), (96, 118235), (109, 118295), (127, 118403), (132, 118427), (149, 118490), (152, 118496),

Gene: CharlieB_209 Start: 119788, Stop: 120243, Start Num: 53

Candidate Starts for CharlieB_209:

(20, 119674), (30, 119737), (Start: 37 @119755 has 2 MA's), (Start: 53 @119788 has 170 MA's), (59, 119806), (91, 119938), (96, 119956), (109, 120016), (127, 120124), (132, 120148), (149, 120211), (152, 120217),

Gene: ChaylaJr_213 Start: 118767, Stop: 119222, Start Num: 53

Candidate Starts for ChaylaJr_213:

(20, 118653), (30, 118716), (Start: 37 @118734 has 2 MA's), (Start: 53 @118767 has 170 MA's), (59, 118785), (91, 118917), (96, 118935), (109, 118995), (127, 119103), (132, 119127), (149, 119190), (152, 119196),

Gene: Chickaboom_44 Start: 28771, Stop: 29241, Start Num: 29

Candidate Starts for Chickaboom_44:

(Start: 29 @28771 has 28 MA's), (Start: 40 @28807 has 1 MA's), (42, 28813), (77, 28909), (88, 28948), (96, 28969), (101, 28987), (108, 29023), (110, 29029), (118, 29074), (121, 29095), (132, 29146), (138, 29164), (149, 29209), (156, 29230),

Gene: ChickenPhender_211 Start: 118214, Stop: 118669, Start Num: 53

Candidate Starts for ChickenPhender_211:

(20, 118100), (30, 118163), (Start: 37 @118181 has 2 MA's), (Start: 53 @118214 has 170 MA's), (59, 118232), (91, 118364), (96, 118382), (109, 118442), (127, 118550), (132, 118574), (149, 118637), (152, 118643),

Gene: Chomp_215 Start: 120837, Stop: 121292, Start Num: 53

Candidate Starts for Chomp_215:

(20, 120723), (30, 120786), (Start: 37 @120804 has 2 MA's), (Start: 53 @120837 has 170 MA's), (59, 120855), (91, 120987), (96, 121005), (109, 121065), (127, 121173), (132, 121197), (149, 121260), (152, 121266),

Gene: CindyLou_216 Start: 121097, Stop: 121552, Start Num: 53

Candidate Starts for CindyLou_216:

(20, 120983), (30, 121046), (Start: 37 @121064 has 2 MA's), (Start: 53 @121097 has 170 MA's), (59, 121115), (91, 121247), (96, 121265), (109, 121325), (127, 121433), (132, 121457), (149, 121520), (152, 121526),

Gene: Colt_206 Start: 122873, Stop: 123328, Start Num: 53

Candidate Starts for Colt_206:

(20, 122759), (30, 122822), (Start: 37 @122840 has 2 MA's), (Start: 53 @122873 has 170 MA's), (59, 122891), (91, 123023), (96, 123041), (109, 123101), (127, 123209), (132, 123233), (149, 123296),

Gene: Colusalem_46 Start: 27262, Stop: 27729, Start Num: 29

Candidate Starts for Colusalem_46:

(19, 27205), (Start: 29 @27262 has 28 MA's), (Start: 40 @27298 has 1 MA's), (61, 27358), (80, 27409), (85, 27424), (96, 27460), (113, 27538), (116, 27550), (127, 27610), (132, 27634), (145, 27685), (147, 27691), (155, 27712), (156, 27718),

Gene: Concombres_220 Start: 121707, Stop: 122162, Start Num: 53

Candidate Starts for Concombres_220:

(20, 121593), (30, 121656), (Start: 37 @121674 has 2 MA's), (Start: 53 @121707 has 170 MA's), (59, 121725), (91, 121857), (96, 121875), (109, 121935), (127, 122043), (132, 122067), (149, 122130), (152, 122136),

Gene: CookieBear_82 Start: 47392, Stop: 47817, Start Num: 49

Candidate Starts for CookieBear_82:

(19, 47287), (Start: 49 @47392 has 17 MA's), (Start: 53 @47404 has 170 MA's), (59, 47419), (63, 47449), (69, 47455), (78, 47479), (119, 47647), (121, 47659), (130, 47704), (151, 47782),

Gene: Coral_43 Start: 27133, Stop: 27600, Start Num: 29

Candidate Starts for Coral_43:

(19, 27076), (Start: 29 @27133 has 28 MA's), (Start: 40 @27169 has 1 MA's), (61, 27229), (80, 27280), (85, 27295), (87, 27298), (96, 27331), (113, 27409), (116, 27421), (127, 27481), (132, 27505), (145, 27556), (147, 27562), (155, 27583), (156, 27589),

Gene: Cote_45 Start: 27610, Stop: 28077, Start Num: 29

Candidate Starts for Cote_45:

(19, 27553), (Start: 29 @27610 has 28 MA's), (Start: 40 @27646 has 1 MA's), (61, 27706), (80, 27757), (85, 27772), (96, 27808), (113, 27886), (116, 27898), (127, 27958), (132, 27982), (145, 28033), (147, 28039), (155, 28060), (156, 28066),

Gene: DTDevon_217 Start: 121586, Stop: 122041, Start Num: 53

Candidate Starts for DTDevon_217:

(20, 121472), (30, 121535), (Start: 37 @121553 has 2 MA's), (Start: 53 @121586 has 170 MA's), (59, 121604), (91, 121736), (96, 121754), (109, 121814), (127, 121922), (132, 121946), (149, 122009), (152, 122015),

Gene: Daffodil_220 Start: 120551, Stop: 121006, Start Num: 53

Candidate Starts for Daffodil_220:

(20, 120437), (30, 120500), (Start: 37 @120518 has 2 MA's), (Start: 53 @120551 has 170 MA's), (59, 120569), (91, 120701), (96, 120719), (109, 120779), (127, 120887), (132, 120911), (149, 120974), (152, 120980),

Gene: Dandelion_223 Start: 123191, Stop: 123646, Start Num: 53

Candidate Starts for Dandelion_223:

(20, 123077), (30, 123140), (Start: 37 @123158 has 2 MA's), (Start: 53 @123191 has 170 MA's), (59, 123209), (91, 123341), (96, 123359), (109, 123419), (127, 123527), (132, 123551), (149, 123614), (152, 123620),

Gene: Daob_45 Start: 27618, Stop: 28085, Start Num: 29

Candidate Starts for Daob_45:

(19, 27561), (Start: 29 @27618 has 28 MA's), (Start: 40 @27654 has 1 MA's), (61, 27714), (80, 27765), (85, 27780), (96, 27816), (113, 27894), (116, 27906), (127, 27966), (132, 27990), (145, 28041), (147, 28047), (155, 28068), (156, 28074),

Gene: Darko_214 Start: 119785, Stop: 120240, Start Num: 53

Candidate Starts for Darko_214:

(20, 119671), (30, 119734), (Start: 37 @119752 has 2 MA's), (Start: 53 @119785 has 170 MA's), (59, 119803), (91, 119935), (96, 119953), (109, 120013), (127, 120121), (132, 120145), (149, 120208), (152, 120214),

Gene: DelaGarza_42 Start: 25918, Stop: 25496, Start Num: 45

Candidate Starts for DelaGarza_42:

(11, 26086), (22, 25999), (Start: 45 @25918 has 3 MA's), (69, 25852), (93, 25783), (96, 25771), (109, 25711), (128, 25606),

Gene: Delilah_213 Start: 120669, Stop: 121124, Start Num: 53

Candidate Starts for Delilah_213:

(20, 120555), (30, 120618), (Start: 37 @120636 has 2 MA's), (Start: 53 @120669 has 170 MA's), (59, 120687), (91, 120819), (96, 120837), (109, 120897), (127, 121005), (132, 121029), (149, 121092), (152, 121098),

Gene: Delylah_217 Start: 120958, Stop: 121413, Start Num: 53

Candidate Starts for Delylah_217:

(20, 120844), (30, 120907), (Start: 37 @120925 has 2 MA's), (Start: 53 @120958 has 170 MA's), (59, 120976), (91, 121108), (96, 121126), (109, 121186), (127, 121294), (132, 121318), (149, 121381), (152, 121387),

Gene: Demodog_221 Start: 121717, Stop: 122172, Start Num: 53

Candidate Starts for Demodog_221:

(20, 121603), (30, 121666), (Start: 37 @121684 has 2 MA's), (Start: 53 @121717 has 170 MA's), (59, 121735), (91, 121867), (96, 121885), (109, 121945), (127, 122053), (132, 122077), (149, 122140), (152, 122146),

Gene: Derek_212 Start: 120114, Stop: 120569, Start Num: 53

Candidate Starts for Derek_212:

(20, 120000), (30, 120063), (Start: 37 @120081 has 2 MA's), (Start: 53 @120114 has 170 MA's), (59, 120132), (91, 120264), (96, 120282), (109, 120342), (127, 120450), (132, 120474), (149, 120537), (152, 120543),

Gene: Dietrick_204 Start: 118790, Stop: 119245, Start Num: 53

Candidate Starts for Dietrick_204:

(20, 118676), (30, 118739), (Start: 37 @118757 has 2 MA's), (Start: 53 @118790 has 170 MA's), (59, 118808), (91, 118940), (96, 118958), (109, 119018), (127, 119126), (132, 119150), (149, 119213), (152, 119219),

Gene: DinoDaryn_57 Start: 37067, Stop: 37507, Start Num: 36

Candidate Starts for DinoDaryn_57:

(Start: 36 @37067 has 5 MA's), (Start: 47 @37082 has 1 MA's), (59, 37106), (77, 37160), (103, 37262), (109, 37286), (116, 37331),

Gene: DirtMonster_208 Start: 120030, Stop: 120485, Start Num: 53

Candidate Starts for DirtMonster_208:

(20, 119916), (30, 119979), (Start: 37 @119997 has 2 MA's), (Start: 53 @120030 has 170 MA's), (59, 120048), (91, 120180), (96, 120198), (109, 120258), (127, 120366), (132, 120390), (149, 120453), (152, 120459),

Gene: Domi_209 Start: 120141, Stop: 120596, Start Num: 53

Candidate Starts for Domi_209:

(20, 120027), (30, 120090), (Start: 37 @120108 has 2 MA's), (Start: 53 @120141 has 170 MA's), (59, 120159), (91, 120291), (96, 120309), (109, 120369), (127, 120477), (132, 120501), (149, 120564), (152, 120570),

Gene: DrPhinkDaddy_212 Start: 121329, Stop: 121784, Start Num: 53

Candidate Starts for DrPhinkDaddy_212:

(20, 121215), (30, 121278), (Start: 37 @121296 has 2 MA's), (Start: 53 @121329 has 170 MA's), (59, 121347), (91, 121479), (96, 121497), (109, 121557), (127, 121665), (132, 121689), (149, 121752), (152, 121758),

Gene: Drazdys_213 Start: 120231, Stop: 120686, Start Num: 53

Candidate Starts for Drazdys_213:

(20, 120117), (30, 120180), (Start: 37 @120198 has 2 MA's), (Start: 53 @120231 has 170 MA's), (59, 120249), (91, 120381), (96, 120399), (109, 120459), (127, 120567), (132, 120591), (149, 120654), (152, 120660),

Gene: ET08_203 Start: 119822, Stop: 120277, Start Num: 53

Candidate Starts for ET08_203:

(20, 119708), (30, 119771), (Start: 37 @119789 has 2 MA's), (Start: 53 @119822 has 170 MA's), (59, 119840), (91, 119972), (96, 119990), (109, 120050), (127, 120158), (132, 120182), (149, 120245), (152, 120251),

Gene: EasyJones_218 Start: 119310, Stop: 119765, Start Num: 53

Candidate Starts for EasyJones_218:

(20, 119196), (30, 119259), (Start: 37 @119277 has 2 MA's), (Start: 53 @119310 has 170 MA's), (59, 119328), (91, 119460), (96, 119478), (109, 119538), (127, 119646), (132, 119670), (149, 119733), (152, 119739),

Gene: Eesa_42 Start: 29653, Stop: 30120, Start Num: 29

Candidate Starts for Eesa_42:

(Start: 29 @29653 has 28 MA's), (Start: 40 @29689 has 1 MA's), (61, 29749), (85, 29815), (96, 29851), (101, 29869), (113, 29929), (121, 29974), (127, 30001), (132, 30025), (134, 30031), (147, 30082), (156, 30109),

Gene: EggyFarm_224 Start: 122165, Stop: 122620, Start Num: 53

Candidate Starts for EggyFarm_224:

(20, 122051), (30, 122114), (Start: 37 @122132 has 2 MA's), (39, 122135), (Start: 53 @122165 has 170 MA's), (59, 122183), (91, 122315), (96, 122333), (109, 122393), (127, 122501), (132, 122525), (149, 122588), (152, 122594),

Gene: EmToTheThree_215 Start: 120702, Stop: 121157, Start Num: 53

Candidate Starts for EmToTheThree_215:

(20, 120588), (30, 120651), (Start: 37 @120669 has 2 MA's), (Start: 53 @120702 has 170 MA's), (59, 120720), (91, 120852), (96, 120870), (109, 120930), (127, 121038), (132, 121062), (149, 121125), (152, 121131),

Gene: EmmaElysia_219 Start: 120993, Stop: 121448, Start Num: 53

Candidate Starts for EmmaElysia_219:

(20, 120879), (30, 120942), (Start: 37 @120960 has 2 MA's), (Start: 53 @120993 has 170 MA's), (59, 121011), (91, 121143), (96, 121161), (109, 121221), (127, 121329), (132, 121353), (149, 121416), (152, 121422),

Gene: Erdmann_216 Start: 120661, Stop: 121116, Start Num: 53

Candidate Starts for Erdmann_216:

(20, 120547), (30, 120610), (Start: 37 @120628 has 2 MA's), (Start: 53 @120661 has 170 MA's), (59, 120679), (91, 120811), (96, 120829), (109, 120889), (127, 120997), (132, 121021), (149, 121084), (152, 121090),

Gene: ErnieJ_208 Start: 117489, Stop: 117944, Start Num: 53

Candidate Starts for ErnieJ_208:

(20, 117375), (30, 117438), (Start: 37 @117456 has 2 MA's), (Start: 53 @117489 has 170 MA's), (59, 117507), (91, 117639), (96, 117657), (109, 117717), (127, 117825), (132, 117849), (149, 117912), (152, 117918),

Gene: Essence_212 Start: 119443, Stop: 119898, Start Num: 53

Candidate Starts for Essence_212:

(20, 119329), (30, 119392), (Start: 37 @119410 has 2 MA's), (Start: 53 @119443 has 170 MA's), (59, 119461), (91, 119593), (96, 119611), (109, 119671), (127, 119779), (132, 119803), (149, 119866), (152, 119872),

Gene: EvePickles_87 Start: 49459, Stop: 49884, Start Num: 49

Candidate Starts for EvePickles_87:

(Start: 49 @49459 has 17 MA's), (Start: 53 @49471 has 170 MA's), (59, 49486), (63, 49516), (69, 49522), (95, 49594), (104, 49636), (122, 49729), (129, 49765), (151, 49849),

Gene: Ewok_214 Start: 120579, Stop: 121034, Start Num: 53

Candidate Starts for Ewok_214:

(20, 120465), (30, 120528), (Start: 37 @120546 has 2 MA's), (Start: 53 @120579 has 170 MA's), (59, 120597), (91, 120729), (96, 120747), (109, 120807), (127, 120915), (132, 120939), (149, 121002), (152, 121008),

Gene: Faja_87 Start: 48745, Stop: 49170, Start Num: 49

Candidate Starts for Faja_87:

(19, 48640), (Start: 49 @48745 has 17 MA's), (Start: 53 @48757 has 170 MA's), (59, 48772), (63, 48802), (69, 48808), (78, 48832), (95, 48880), (104, 48922), (118, 48991), (151, 49135),

Gene: Flabslab_210 Start: 117631, Stop: 118086, Start Num: 53

Candidate Starts for Flabslab_210:

(20, 117517), (30, 117580), (Start: 37 @117598 has 2 MA's), (Start: 53 @117631 has 170 MA's), (59, 117649), (91, 117781), (96, 117799), (109, 117859), (127, 117967), (132, 117991), (149, 118054), (152, 118060),

Gene: Fludd_215 Start: 119022, Stop: 119477, Start Num: 53

Candidate Starts for Fludd_215:

(20, 118908), (30, 118971), (Start: 37 @118989 has 2 MA's), (Start: 53 @119022 has 170 MA's), (59, 119040), (91, 119172), (96, 119190), (109, 119250), (127, 119358), (132, 119382), (149, 119445), (152, 119451),

Gene: FoxtrotP1_213 Start: 121259, Stop: 121714, Start Num: 53

Candidate Starts for FoxtrotP1_213:

(20, 121145), (30, 121208), (Start: 37 @121226 has 2 MA's), (Start: 53 @121259 has 170 MA's), (59, 121277), (91, 121409), (96, 121427), (109, 121487), (127, 121595), (132, 121619), (149, 121682), (152, 121688),

Gene: FrayBell_218 Start: 119112, Stop: 119567, Start Num: 53

Candidate Starts for FrayBell_218:

(20, 118998), (30, 119061), (Start: 37 @119079 has 2 MA's), (Start: 53 @119112 has 170 MA's), (59, 119130), (91, 119262), (96, 119280), (109, 119340), (127, 119448), (132, 119472), (149, 119535), (152, 119541),

Gene: Fregley_61 Start: 42057, Stop: 41593, Start Num: 49

Candidate Starts for Fregley_61:

(Start: 47 @42060 has 1 MA's), (Start: 49 @42057 has 17 MA's), (61, 42012), (90, 41925), (98, 41889), (114, 41814), (124, 41748), (127, 41736), (128, 41733), (141, 41682), (157, 41619), (158, 41616),

Gene: FudgeTart_210 Start: 119726, Stop: 120181, Start Num: 53

Candidate Starts for FudgeTart_210:

(20, 119612), (30, 119675), (Start: 37 @119693 has 2 MA's), (Start: 53 @119726 has 170 MA's), (59, 119744), (91, 119876), (96, 119894), (109, 119954), (127, 120062), (132, 120086), (149, 120149), (152, 120155),

Gene: GUPitcher_62 Start: 39387, Stop: 39782, Start Num: 50

Candidate Starts for GUPitcher_62:

(9, 39192), (10, 39198), (Start: 48 @39381 has 4 MA's), (50, 39387), (59, 39405), (66, 39444), (72, 39459), (73, 39462), (77, 39468), (92, 39504), (95, 39516), (104, 39564), (109, 39582),

Gene: Gabriel_218 Start: 119181, Stop: 119636, Start Num: 53

Candidate Starts for Gabriel_218:

(20, 119067), (30, 119130), (Start: 37 @119148 has 2 MA's), (Start: 53 @119181 has 170 MA's), (59, 119199), (91, 119331), (96, 119349), (109, 119409), (127, 119517), (132, 119541), (149, 119604), (152, 119610),

Gene: Galaxy_41 Start: 27422, Stop: 27892, Start Num: 29

Candidate Starts for Galaxy_41:

(Start: 29 @27422 has 28 MA's), (31, 27437), (Start: 40 @27458 has 1 MA's), (42, 27464), (77, 27560), (96, 27620), (101, 27638), (108, 27674), (127, 27773), (132, 27797), (138, 27815), (147, 27854), (149, 27860), (156, 27881),

Gene: Gamgam_216 Start: 119538, Stop: 119993, Start Num: 53

Candidate Starts for Gamgam_216:

(20, 119424), (30, 119487), (Start: 37 @119505 has 2 MA's), (Start: 53 @119538 has 170 MA's), (59, 119556), (91, 119688), (96, 119706), (109, 119766), (127, 119874), (132, 119898), (149, 119961), (152, 119967),

Gene: Ghost_215 Start: 119459, Stop: 119914, Start Num: 53

Candidate Starts for Ghost_215:

(20, 119345), (30, 119408), (Start: 37 @119426 has 2 MA's), (Start: 53 @119459 has 170 MA's), (59, 119477), (82, 119579), (91, 119609), (96, 119627), (109, 119687), (127, 119795), (132, 119819), (149, 119882), (152, 119888),

Gene: Gingerbug_41 Start: 26445, Stop: 26023, Start Num: 45

Candidate Starts for Gingerbug_41:

(Start: 45 @26445 has 3 MA's), (77, 26358), (103, 26262), (104, 26256), (109, 26238), (132, 26112), (137, 26097), (144, 26067), (154, 26037),

Gene: Gizmo_221 Start: 122577, Stop: 123032, Start Num: 53

Candidate Starts for Gizmo_221:

(20, 122463), (30, 122526), (Start: 37 @122544 has 2 MA's), (Start: 53 @122577 has 170 MA's), (59, 122595), (91, 122727), (96, 122745), (109, 122805), (127, 122913), (132, 122937), (149, 123000), (152, 123006),

Gene: Globfish_84 Start: 47023, Stop: 47436, Start Num: 53

Candidate Starts for Globfish_84:

(Start: 49 @47014 has 17 MA's), (Start: 53 @47023 has 170 MA's), (59, 47038), (63, 47068), (69, 47074), (78, 47098), (104, 47188), (119, 47266), (121, 47278), (151, 47401),

Gene: Glotell_47 Start: 28433, Stop: 28867, Start Num: 40

Candidate Starts for Glotell_47:

(Start: 29 @28397 has 28 MA's), (Start: 40 @28433 has 1 MA's), (66, 28514), (77, 28538), (85, 28562), (93, 28586), (96, 28598), (99, 28607), (101, 28616), (108, 28652), (116, 28688), (118, 28700), (121, 28721), (123, 28733), (133, 28775), (145, 28823), (148, 28832),

Gene: GlutenPhree_215 Start: 119549, Stop: 120004, Start Num: 53

Candidate Starts for GlutenPhree_215:

(20, 119435), (30, 119498), (Start: 37 @119516 has 2 MA's), (Start: 53 @119549 has 170 MA's), (59, 119567), (91, 119699), (96, 119717), (109, 119777), (127, 119885), (132, 119909), (149, 119972), (152, 119978),

Gene: Goib_58 Start: 38192, Stop: 38617, Start Num: 44

Candidate Starts for Goib_58:

(Start: 37 @38183 has 2 MA's), (42, 38189), (Start: 44 @38192 has 1 MA's), (59, 38216), (77, 38270), (103, 38372), (109, 38396), (116, 38441),

Gene: Gorpy_83 Start: 48809, Stop: 49234, Start Num: 49

Candidate Starts for Gorpy_83:

(Start: 49 @48809 has 17 MA's), (Start: 53 @48821 has 170 MA's), (59, 48836), (63, 48866), (69, 48872), (119, 49064), (121, 49076), (151, 49199),

Gene: Grasshills_223 Start: 122164, Stop: 122619, Start Num: 53

Candidate Starts for Grasshills_223:

(20, 122050), (30, 122113), (Start: 37 @122131 has 2 MA's), (39, 122134), (Start: 53 @122164 has 170 MA's), (59, 122182), (91, 122314), (96, 122332), (109, 122392), (127, 122500), (132, 122524), (149, 122587), (152, 122593),

Gene: Gravel_52 Start: 29743, Stop: 30210, Start Num: 29

Candidate Starts for Gravel_52:

(Start: 29 @29743 has 28 MA's), (Start: 40 @29779 has 1 MA's), (61, 29839), (85, 29905), (96, 29941), (101, 29959), (113, 30019), (121, 30064), (127, 30091), (132, 30115), (134, 30121), (147, 30172), (156, 30199),

Gene: Grungle_199 Start: 117496, Stop: 117951, Start Num: 53

Candidate Starts for Grungle_199:

(20, 117382), (30, 117445), (Start: 37 @117463 has 2 MA's), (Start: 53 @117496 has 170 MA's), (59, 117514), (91, 117646), (96, 117664), (109, 117724), (127, 117832), (132, 117856), (149, 117919), (152, 117925),

Gene: Guwapp_210 Start: 118293, Stop: 118748, Start Num: 53

Candidate Starts for Guwapp_210:

(20, 118179), (30, 118242), (Start: 37 @118260 has 2 MA's), (Start: 53 @118293 has 170 MA's), (59, 118311), (91, 118443), (96, 118461), (109, 118521), (127, 118629), (132, 118653), (149, 118716), (152, 118722),

Gene: Halldule_208 Start: 118678, Stop: 119133, Start Num: 53

Candidate Starts for Halldule_208:

(20, 118564), (30, 118627), (Start: 37 @118645 has 2 MA's), (Start: 53 @118678 has 170 MA's), (59, 118696), (91, 118828), (96, 118846), (109, 118906), (127, 119014), (132, 119038), (149, 119101), (152, 119107),

Gene: HamCheese_44 Start: 28363, Stop: 28797, Start Num: 40

Candidate Starts for HamCheese_44:

(Start: 29 @28327 has 28 MA's), (Start: 40 @28363 has 1 MA's), (66, 28444), (77, 28468), (85, 28492), (93, 28516), (96, 28528), (99, 28537), (101, 28546), (108, 28582), (116, 28618), (118, 28630), (121, 28651), (123, 28663), (133, 28705), (145, 28753), (148, 28762),

Gene: HannahPhantana_44 Start: 27280, Stop: 27747, Start Num: 29

Candidate Starts for HannahPhantana_44:

(19, 27223), (Start: 29 @27280 has 28 MA's), (Start: 40 @27316 has 1 MA's), (61, 27376), (80, 27427), (85, 27442), (96, 27478), (113, 27556), (116, 27568), (127, 27628), (132, 27652), (145, 27703), (147, 27709), (155, 27730), (156, 27736),

Gene: Hestia_80 Start: 45962, Stop: 46387, Start Num: 49

Candidate Starts for Hestia_80:

(Start: 49 @45962 has 17 MA's), (Start: 53 @45974 has 170 MA's), (59, 45989), (63, 46019), (69, 46025), (78, 46049), (104, 46139), (151, 46352),

Gene: Hillester_90 Start: 48709, Stop: 49134, Start Num: 49

Candidate Starts for Hillester_90:

(33, 48679), (Start: 49 @48709 has 17 MA's), (Start: 53 @48721 has 170 MA's), (59, 48736), (63, 48766), (69, 48772), (78, 48796), (95, 48844), (104, 48886), (118, 48955), (151, 49099),

Gene: Huffy_57 Start: 37067, Stop: 37507, Start Num: 36

Candidate Starts for Huffy_57:

(Start: 36 @37067 has 5 MA's), (Start: 47 @37082 has 1 MA's), (59, 37106), (77, 37160), (103, 37262), (109, 37286), (116, 37331),

Gene: HyRo_203 Start: 118809, Stop: 119264, Start Num: 53

Candidate Starts for HyRo_203:

(20, 118695), (30, 118758), (Start: 37 @118776 has 2 MA's), (Start: 53 @118809 has 170 MA's), (59, 118827), (91, 118959), (96, 118977), (109, 119037), (127, 119145), (132, 119169), (149, 119232), (152, 119238),

Gene: I3_225 Start: 121254, Stop: 121709, Start Num: 53

Candidate Starts for I3_225:

(20, 121140), (30, 121203), (Start: 37 @121221 has 2 MA's), (Start: 53 @121254 has 170 MA's), (59, 121272), (65, 121314), (91, 121404), (96, 121422), (109, 121482), (127, 121590), (132, 121614), (149, 121677), (152, 121683),

Gene: IkeLoa_207 Start: 119203, Stop: 119658, Start Num: 53

Candidate Starts for IkeLoa_207:

(20, 119089), (30, 119152), (Start: 37 @119170 has 2 MA's), (Start: 53 @119203 has 170 MA's), (59, 119221), (91, 119353), (96, 119371), (109, 119431), (127, 119539), (132, 119563), (149, 119626), (152, 119632),

Gene: InigoMontoya_218 Start: 120212, Stop: 120667, Start Num: 53

Candidate Starts for InigoMontoya_218:

(20, 120098), (30, 120161), (Start: 37 @120179 has 2 MA's), (Start: 53 @120212 has 170 MA's), (59, 120230), (91, 120362), (96, 120380), (109, 120440), (127, 120548), (132, 120572), (149, 120635), (152, 120641),

Gene: InterFolia_218 Start: 120917, Stop: 121372, Start Num: 53

Candidate Starts for InterFolia_218:

(20, 120803), (30, 120866), (Start: 37 @120884 has 2 MA's), (Start: 53 @120917 has 170 MA's), (59, 120935), (91, 121067), (96, 121085), (109, 121145), (127, 121253), (132, 121277), (149, 121340), (152, 121346),

Gene: Iota_210 Start: 119897, Stop: 120352, Start Num: 53

Candidate Starts for Iota_210:

(20, 119783), (30, 119846), (Start: 37 @119864 has 2 MA's), (Start: 53 @119897 has 170 MA's), (59, 119915), (91, 120047), (96, 120065), (109, 120125), (127, 120233), (132, 120257), (149, 120320), (152, 120326),

Gene: Isolde_87 Start: 49198, Stop: 49623, Start Num: 49

Candidate Starts for Isolde_87:

(33, 49168), (Start: 49 @49198 has 17 MA's), (Start: 53 @49210 has 170 MA's), (59, 49225), (63, 49255), (69, 49261), (78, 49285), (151, 49588),

Gene: Issimir_208 Start: 119850, Stop: 120305, Start Num: 53

Candidate Starts for Issimir_208:

(20, 119736), (30, 119799), (Start: 37 @119817 has 2 MA's), (Start: 53 @119850 has 170 MA's), (59, 119868), (91, 120000), (96, 120018), (109, 120078), (127, 120186), (132, 120210), (149, 120273), (152, 120279),

Gene: Izajani_213 Start: 120719, Stop: 121174, Start Num: 53

Candidate Starts for Izajani_213:

(20, 120605), (30, 120668), (Start: 37 @120686 has 2 MA's), (Start: 53 @120719 has 170 MA's), (59, 120737), (91, 120869), (96, 120887), (109, 120947), (127, 121055), (132, 121079), (149, 121142), (152, 121148),

Gene: JPickles_211 Start: 118197, Stop: 118652, Start Num: 53

Candidate Starts for JPickles_211:

(20, 118083), (30, 118146), (Start: 37 @118164 has 2 MA's), (Start: 53 @118197 has 170 MA's), (59, 118215), (91, 118347), (96, 118365), (109, 118425), (127, 118533), (132, 118557), (149, 118620), (152, 118626),

Gene: Jamun_42 Start: 28931, Stop: 29401, Start Num: 29

Candidate Starts for Jamun_42:

(Start: 29 @28931 has 28 MA's), (Start: 40 @28967 has 1 MA's), (42, 28973), (77, 29069), (96, 29129), (101, 29147), (108, 29183), (113, 29210), (118, 29234), (127, 29282), (132, 29306), (138, 29324), (145, 29357), (147, 29363), (149, 29369), (156, 29390),

Gene: Janiyra_218 Start: 120437, Stop: 120892, Start Num: 53

Candidate Starts for Janiyra_218:

(20, 120323), (30, 120386), (Start: 37 @120404 has 2 MA's), (Start: 53 @120437 has 170 MA's), (59, 120455), (91, 120587), (96, 120605), (109, 120665), (127, 120773), (132, 120797), (149, 120860), (152, 120866),

Gene: JayJay_213 Start: 120141, Stop: 120596, Start Num: 53

Candidate Starts for JayJay_213:

(20, 120027), (30, 120090), (Start: 37 @120108 has 2 MA's), (Start: 53 @120141 has 170 MA's), (59, 120159), (91, 120291), (96, 120309), (109, 120369), (127, 120477), (132, 120501), (149, 120564), (152, 120570),

Gene: Jaygup_211 Start: 119258, Stop: 119713, Start Num: 53

Candidate Starts for Jaygup_211:

(20, 119144), (30, 119207), (Start: 37 @119225 has 2 MA's), (Start: 53 @119258 has 170 MA's), (59, 119276), (91, 119408), (96, 119426), (109, 119486), (127, 119594), (132, 119618), (149, 119681), (152, 119687),

Gene: Jedediah_215 Start: 120311, Stop: 120766, Start Num: 53

Candidate Starts for Jedediah_215:

(20, 120197), (30, 120260), (Start: 37 @120278 has 2 MA's), (Start: 53 @120311 has 170 MA's), (59, 120329), (91, 120461), (96, 120479), (109, 120539), (127, 120647), (132, 120671), (149, 120734), (152, 120740),

Gene: Jemmno_214 Start: 119140, Stop: 119595, Start Num: 53

Candidate Starts for Jemmno_214:

(20, 119026), (30, 119089), (Start: 37 @119107 has 2 MA's), (Start: 53 @119140 has 170 MA's), (59, 119158), (91, 119290), (96, 119308), (109, 119368), (127, 119476), (132, 119500), (149, 119563), (152, 119569),

Gene: Jerole_53 Start: 27404, Stop: 27871, Start Num: 29

Candidate Starts for Jerole_53:

(19, 27347), (Start: 29 @27404 has 28 MA's), (Start: 40 @27440 has 1 MA's), (61, 27500), (80, 27551), (85, 27566), (96, 27602), (113, 27680), (116, 27692), (127, 27752), (132, 27776), (145, 27827), (147, 27833), (155, 27854), (156, 27860),

Gene: Jessibeth14_215 Start: 121328, Stop: 121783, Start Num: 53

Candidate Starts for Jessibeth14_215:

(20, 121214), (30, 121277), (Start: 37 @121295 has 2 MA's), (Start: 53 @121328 has 170 MA's), (59, 121346), (91, 121478), (96, 121496), (109, 121556), (127, 121664), (132, 121688), (149, 121751), (152, 121757),

Gene: Jezreel_212 Start: 120398, Stop: 120853, Start Num: 53

Candidate Starts for Jezreel_212:

(20, 120284), (30, 120347), (Start: 37 @120365 has 2 MA's), (Start: 53 @120398 has 170 MA's), (59, 120416), (91, 120548), (96, 120566), (109, 120626), (127, 120734), (132, 120758), (149, 120821), (152, 120827),

Gene: JigglyPuff_222 Start: 121715, Stop: 122170, Start Num: 53

Candidate Starts for JigglyPuff_222:

(20, 121601), (30, 121664), (Start: 37 @121682 has 2 MA's), (Start: 53 @121715 has 170 MA's), (59, 121733), (91, 121865), (96, 121883), (109, 121943), (127, 122051), (132, 122075), (149, 122138), (152, 122144),

Gene: JulietS_208 Start: 117438, Stop: 117893, Start Num: 53

Candidate Starts for JulietS_208:

(1, 116919), (20, 117324), (30, 117387), (Start: 37 @117405 has 2 MA's), (Start: 53 @117438 has 170 MA's), (59, 117456), (91, 117588), (96, 117606), (109, 117666), (127, 117774), (132, 117798), (149, 117861), (152, 117867),

Gene: Juno112_44 Start: 28343, Stop: 28813, Start Num: 29

Candidate Starts for Juno112_44:

(Start: 29 @28343 has 28 MA's), (Start: 40 @28379 has 1 MA's), (66, 28460), (77, 28484), (85, 28508), (93, 28532), (96, 28544), (99, 28553), (101, 28562), (108, 28598), (116, 28634), (118, 28646), (121, 28667), (123, 28679), (133, 28721), (145, 28769), (148, 28778),

Gene: JustHall_209 Start: 119344, Stop: 119799, Start Num: 53

Candidate Starts for JustHall_209:

(20, 119230), (30, 119293), (Start: 37 @119311 has 2 MA's), (Start: 53 @119344 has 170 MA's), (59, 119362), (91, 119494), (96, 119512), (109, 119572), (127, 119680), (132, 119704), (149, 119767), (152, 119773),

Gene: KHumphrey_45 Start: 28276, Stop: 28710, Start Num: 40

Candidate Starts for KHumphrey_45:

(Start: 29 @28240 has 28 MA's), (Start: 40 @28276 has 1 MA's), (66, 28357), (77, 28381), (85, 28405), (93, 28429), (96, 28441), (99, 28450), (101, 28459), (108, 28495), (116, 28531), (121, 28564), (123, 28576), (133, 28618), (145, 28666), (148, 28675),

Gene: Kamryn_214 Start: 120974, Stop: 121429, Start Num: 53

Candidate Starts for Kamryn_214:

(20, 120860), (30, 120923), (Start: 37 @120941 has 2 MA's), (Start: 53 @120974 has 170 MA's), (59, 120992), (91, 121124), (96, 121142), (109, 121202), (127, 121310), (132, 121334), (149, 121397), (152, 121403),

Gene: Kboogie_219 Start: 120002, Stop: 120457, Start Num: 53

Candidate Starts for Kboogie_219:

(20, 119888), (30, 119951), (Start: 37 @119969 has 2 MA's), (Start: 53 @120002 has 170 MA's), (59, 120020), (91, 120152), (96, 120170), (109, 120230), (127, 120338), (132, 120362), (149, 120425), (152, 120431),

Gene: KendraB23_53 Start: 29930, Stop: 30397, Start Num: 29

Candidate Starts for KendraB23_53:

(Start: 29 @29930 has 28 MA's), (Start: 40 @29966 has 1 MA's), (61, 30026), (85, 30092), (96, 30128), (101, 30146), (113, 30206), (127, 30278), (132, 30302), (134, 30308), (147, 30359), (155, 30380), (156, 30386),

Gene: Kepler_45 Start: 28028, Stop: 28495, Start Num: 29

Candidate Starts for Kepler_45:

(19, 27971), (Start: 29 @28028 has 28 MA's), (Start: 40 @28064 has 1 MA's), (61, 28124), (80, 28175), (85, 28190), (87, 28193), (96, 28226), (113, 28304), (116, 28316), (127, 28376), (132, 28400), (145, 28451), (147, 28457), (156, 28484),

Gene: Khaleesi_214 Start: 120795, Stop: 121250, Start Num: 53

Candidate Starts for Khaleesi_214:

(20, 120681), (30, 120744), (Start: 37 @120762 has 2 MA's), (Start: 53 @120795 has 170 MA's), (59, 120813), (91, 120945), (96, 120963), (109, 121023), (127, 121131), (132, 121155), (149, 121218), (152, 121224),

Gene: Khuang_63 Start: 36921, Stop: 37343, Start Num: 47

Candidate Starts for Khuang_63:

(Start: 47 @36921 has 1 MA's), (78, 37011), (81, 37017), (102, 37095), (127, 37233),

Gene: Koguma_214 Start: 119655, Stop: 120110, Start Num: 53

Candidate Starts for Koguma_214:

(20, 119541), (30, 119604), (Start: 37 @119622 has 2 MA's), (Start: 53 @119655 has 170 MA's), (59, 119673), (91, 119805), (96, 119823), (109, 119883), (127, 119991), (132, 120015), (149, 120078), (152, 120084),

Gene: Kudrefre_85 Start: 49906, Stop: 50304, Start Num: 52

Candidate Starts for Kudrefre_85:

(Start: 52 @49906 has 4 MA's), (58, 49918), (59, 49924), (77, 49978), (93, 50032), (99, 50059), (109, 50095), (111, 50113), (118, 50155), (119, 50164), (121, 50176), (145, 50275),

Gene: Kuleana_45 Start: 27612, Stop: 28070, Start Num: 29

Candidate Starts for Kuleana_45:

(Start: 29 @27612 has 28 MA's), (Start: 40 @27648 has 1 MA's), (85, 27777), (89, 27795), (96, 27813), (101, 27831), (132, 27987), (145, 28038), (147, 28044), (153, 28059),

Gene: Kumotta_70 Start: 37512, Stop: 37922, Start Num: 54

Candidate Starts for Kumotta_70:

(Start: 54 @37512 has 2 MA's),

Gene: LRRHood_208 Start: 119007, Stop: 119462, Start Num: 53

Candidate Starts for LRRHood_208:

(20, 118893), (30, 118956), (Start: 37 @118974 has 2 MA's), (Start: 53 @119007 has 170 MA's), (59, 119025), (91, 119157), (96, 119175), (109, 119235), (127, 119343), (132, 119367), (149, 119430), (152, 119436),

Gene: Latch_215 Start: 119548, Stop: 120003, Start Num: 53

Candidate Starts for Latch_215:

(20, 119434), (30, 119497), (Start: 37 @119515 has 2 MA's), (Start: 53 @119548 has 170 MA's), (59, 119566), (91, 119698), (96, 119716), (109, 119776), (127, 119884), (132, 119908), (149, 119971), (152, 119977),

Gene: Lawnathon_87 Start: 48159, Stop: 48584, Start Num: 49

Candidate Starts for Lawnathon_87:

(33, 48129), (Start: 49 @48159 has 17 MA's), (Start: 53 @48171 has 170 MA's), (59, 48186), (63, 48216), (69, 48222), (119, 48414), (121, 48426), (130, 48471), (151, 48549),

Gene: Lee7_215 Start: 122175, Stop: 122630, Start Num: 53

Candidate Starts for Lee7_215:

(20, 122061), (30, 122124), (Start: 37 @122142 has 2 MA's), (Start: 53 @122175 has 170 MA's), (59, 122193), (91, 122325), (96, 122343), (109, 122403), (127, 122511), (132, 122535), (149, 122598), (152, 122604),

Gene: Leona_44 Start: 28420, Stop: 28890, Start Num: 29

Candidate Starts for Leona_44:

(Start: 29 @28420 has 28 MA's), (Start: 40 @28456 has 1 MA's), (77, 28561), (85, 28585), (93, 28609), (96, 28621), (99, 28630), (101, 28639), (108, 28675), (116, 28711), (118, 28723), (121, 28744), (123, 28756), (133, 28798), (145, 28846), (148, 28855),

Gene: Lesiram_43 Start: 25890, Stop: 25468, Start Num: 45

Candidate Starts for Lesiram_43:

(Start: 45 @25890 has 3 MA's), (69, 25824), (93, 25755), (96, 25743), (106, 25692), (109, 25683), (128, 25578),

Gene: Lethe_217 Start: 121438, Stop: 121893, Start Num: 53

Candidate Starts for Lethe_217:

(20, 121324), (30, 121387), (Start: 37 @121405 has 2 MA's), (Start: 53 @121438 has 170 MA's), (59, 121456), (91, 121588), (96, 121606), (109, 121666), (127, 121774), (132, 121798), (149, 121861), (152, 121867),

Gene: LifeSavor_214 Start: 120073, Stop: 120528, Start Num: 53

Candidate Starts for LifeSavor_214:

(20, 119959), (30, 120022), (Start: 37 @120040 has 2 MA's), (Start: 53 @120073 has 170 MA's), (59, 120091), (91, 120223), (96, 120241), (109, 120301), (127, 120409), (132, 120433), (149, 120496), (152, 120502),

Gene: LinStu_214 Start: 119294, Stop: 119749, Start Num: 53

Candidate Starts for LinStu_214:

(20, 119180), (30, 119243), (Start: 37 @119261 has 2 MA's), (Start: 53 @119294 has 170 MA's), (59, 119312), (91, 119444), (96, 119462), (109, 119522), (127, 119630), (132, 119654), (149, 119717), (152, 119723),

Gene: LittleTokyo_43 Start: 27119, Stop: 27583, Start Num: 29

Candidate Starts for LittleTokyo_43:

(Start: 29 @27119 has 28 MA's), (Start: 40 @27155 has 1 MA's), (77, 27260), (101, 27335), (118, 27416), (121, 27437), (145, 27539), (147, 27545),

Gene: Littleton_218 Start: 120785, Stop: 121240, Start Num: 53

Candidate Starts for Littleton_218:

(20, 120671), (30, 120734), (Start: 37 @120752 has 2 MA's), (Start: 53 @120785 has 170 MA's), (59, 120803), (91, 120935), (96, 120953), (109, 121013), (127, 121121), (132, 121145), (149, 121208), (152, 121214),

Gene: Loanshark_212 Start: 120110, Stop: 120565, Start Num: 53

Candidate Starts for Loanshark_212:

(20, 119996), (30, 120059), (Start: 37 @120077 has 2 MA's), (Start: 53 @120110 has 170 MA's), (59, 120128), (91, 120260), (96, 120278), (109, 120338), (127, 120446), (132, 120470), (149, 120533), (152, 120539),

Gene: LolaVinca_213 Start: 120347, Stop: 120802, Start Num: 53

Candidate Starts for LolaVinca_213:

(20, 120233), (30, 120296), (Start: 37 @120314 has 2 MA's), (Start: 53 @120347 has 170 MA's), (59, 120365), (91, 120497), (96, 120515), (109, 120575), (127, 120683), (132, 120707), (149, 120770), (152, 120776),

Gene: LordLeafolot_217 Start: 119960, Stop: 120415, Start Num: 53

Candidate Starts for LordLeafolot_217:

(20, 119846), (30, 119909), (Start: 37 @119927 has 2 MA's), (Start: 53 @119960 has 170 MA's), (59, 119978), (91, 120110), (96, 120128), (109, 120188), (127, 120296), (132, 120320), (149, 120383), (152, 120389),

Gene: Lukilu_206 Start: 121010, Stop: 121465, Start Num: 53

Candidate Starts for Lukilu_206:

(20, 120896), (30, 120959), (Start: 37 @120977 has 2 MA's), (Start: 53 @121010 has 170 MA's), (59, 121028), (91, 121160), (96, 121178), (109, 121238), (127, 121346), (132, 121370), (149, 121433), (152, 121439),

Gene: Lunar_45 Start: 27944, Stop: 28411, Start Num: 29

Candidate Starts for Lunar_45:

(19, 27887), (Start: 29 @27944 has 28 MA's), (Start: 40 @27980 has 1 MA's), (61, 28040), (80, 28091), (85, 28106), (96, 28142), (113, 28220), (116, 28232), (127, 28292), (132, 28316), (145, 28367), (147, 28373), (155, 28394), (156, 28400),

Gene: Maby2021_215 Start: 121239, Stop: 121694, Start Num: 53

Candidate Starts for Maby2021_215:

(20, 121125), (30, 121188), (Start: 37 @121206 has 2 MA's), (Start: 53 @121239 has 170 MA's), (59, 121257), (91, 121389), (96, 121407), (109, 121467), (127, 121575), (132, 121599), (149, 121662), (152, 121668),

Gene: MalagasyRose_70 Start: 46724, Stop: 47353, Start Num: 13

Candidate Starts for MalagasyRose_70:

(2, 46601), (6, 46634), (8, 46643), (Start: 13 @46724 has 1 MA's), (26, 46790), (27, 46805), (Start: 37 @46835 has 2 MA's), (Start: 40 @46841 has 1 MA's), (59, 46883), (84, 46973), (96, 47018), (97, 47021), (100, 47039), (103, 47060), (105, 47072), (108, 47081), (109, 47084), (116, 47129), (119, 47153), (121, 47165), (126, 47186), (127, 47189), (140, 47237), (144, 47258), (161, 47327),

Gene: Mangeria_216 Start: 121341, Stop: 121796, Start Num: 53

Candidate Starts for Mangeria_216:

(20, 121227), (30, 121290), (Start: 37 @121308 has 2 MA's), (Start: 53 @121341 has 170 MA's), (59, 121359), (91, 121491), (96, 121509), (109, 121569), (127, 121677), (132, 121701), (149, 121764), (152, 121770),

Gene: MargaretKali_66 Start: 36130, Stop: 36540, Start Num: 54

Candidate Starts for MargaretKali_66:

(Start: 54 @36130 has 2 MA's),

Gene: Maruru_53 Start: 40603, Stop: 41109, Start Num: 26

Candidate Starts for Maruru_53:

(Start: 17 @40561 has 1 MA's), (26, 40603), (61, 40714), (69, 40735), (94, 40804), (132, 40990),

Gene: MaterMagnus_86 Start: 49021, Stop: 49443, Start Num: 49

Candidate Starts for MaterMagnus_86:

(Start: 49 @49021 has 17 MA's), (Start: 53 @49030 has 170 MA's), (59, 49045), (63, 49075), (69, 49081), (78, 49105), (104, 49195), (151, 49408),

Gene: Matsumoto_214 Start: 119990, Stop: 120445, Start Num: 53

Candidate Starts for Matsumoto_214:

(20, 119876), (30, 119939), (Start: 37 @119957 has 2 MA's), (Start: 53 @119990 has 170 MA's), (59, 120008), (91, 120140), (96, 120158), (109, 120218), (127, 120326), (132, 120350), (149, 120413), (152, 120419),

Gene: McGee_214 Start: 119184, Stop: 119639, Start Num: 53

Candidate Starts for McGee_214:

(20, 119070), (30, 119133), (Start: 37 @119151 has 2 MA's), (Start: 53 @119184 has 170 MA's), (59, 119202), (91, 119334), (96, 119352), (109, 119412), (127, 119520), (132, 119544), (149, 119607), (152, 119613),

Gene: McWolfish_212 Start: 120006, Stop: 120461, Start Num: 53

Candidate Starts for McWolfish_212:

(20, 119892), (30, 119955), (Start: 37 @119973 has 2 MA's), (Start: 53 @120006 has 170 MA's), (59, 120024), (91, 120156), (96, 120174), (109, 120234), (127, 120342), (132, 120366), (149, 120429), (152, 120435),

Gene: Megamind_212 Start: 120297, Stop: 120752, Start Num: 53

Candidate Starts for Megamind_212:

(20, 120183), (30, 120246), (Start: 37 @120264 has 2 MA's), (Start: 53 @120297 has 170 MA's), (59, 120315), (91, 120447), (96, 120465), (109, 120525), (127, 120633), (132, 120657), (149, 120720), (152, 120726),

Gene: Melons_45 Start: 27758, Stop: 28225, Start Num: 29

Candidate Starts for Melons_45:

(19, 27701), (Start: 29 @27758 has 28 MA's), (Start: 40 @27794 has 1 MA's), (61, 27854), (80, 27905), (85, 27920), (87, 27923), (96, 27956), (113, 28034), (116, 28046), (127, 28106), (132, 28130), (145, 28181), (147, 28187), (155, 28208), (156, 28214),

Gene: Melpomini_210 Start: 119082, Stop: 119537, Start Num: 53

Candidate Starts for Melpomini_210:

(20, 118968), (30, 119031), (Start: 37 @119049 has 2 MA's), (Start: 53 @119082 has 170 MA's), (59, 119100), (91, 119232), (96, 119250), (109, 119310), (127, 119418), (132, 119442), (149, 119505), (152, 119511),

Gene: MichelleMyBell_49 Start: 33179, Stop: 33610, Start Num: 37

Candidate Starts for MichelleMyBell_49:

(15, 33071), (Start: 37 @33179 has 2 MA's), (55, 33215), (57, 33218), (96, 33347), (98, 33362), (104, 33383), (118, 33461), (126, 33503), (131, 33527), (135, 33539), (145, 33581),

Gene: MidnightRain_92 Start: 49545, Stop: 49970, Start Num: 49

Candidate Starts for MidnightRain_92:

(33, 49515), (Start: 49 @49545 has 17 MA's), (Start: 53 @49557 has 170 MA's), (59, 49572), (63, 49602), (69, 49608), (78, 49632), (95, 49680), (118, 49791), (151, 49935),

Gene: MikeLiesIn_217 Start: 121433, Stop: 121888, Start Num: 53

Candidate Starts for MikeLiesIn_217:

(20, 121319), (30, 121382), (Start: 37 @121400 has 2 MA's), (Start: 53 @121433 has 170 MA's), (59, 121451), (91, 121583), (96, 121601), (109, 121661), (127, 121769), (132, 121793), (149, 121856),

(152, 121862),

Gene: Mikro_211 Start: 121982, Stop: 122437, Start Num: 53

Candidate Starts for Mikro_211:

(20, 121868), (30, 121931), (Start: 37 @121949 has 2 MA's), (Start: 53 @121982 has 170 MA's), (59, 122000), (91, 122132), (96, 122150), (109, 122210), (127, 122318), (132, 122342), (149, 122405), (152, 122411),

Gene: MoMoMixon_213 Start: 120472, Stop: 120927, Start Num: 53

Candidate Starts for MoMoMixon_213:

(20, 120358), (30, 120421), (Start: 37 @120439 has 2 MA's), (Start: 53 @120472 has 170 MA's), (59, 120490), (91, 120622), (96, 120640), (109, 120700), (127, 120808), (132, 120832), (149, 120895), (152, 120901),

Gene: Momo_216 Start: 119548, Stop: 120003, Start Num: 53

Candidate Starts for Momo_216:

(20, 119434), (30, 119497), (Start: 37 @119515 has 2 MA's), (Start: 53 @119548 has 170 MA's), (59, 119566), (91, 119698), (96, 119716), (109, 119776), (127, 119884), (132, 119908), (149, 119971), (152, 119977),

Gene: Morizzled23_212 Start: 118915, Stop: 119370, Start Num: 53

Candidate Starts for Morizzled23_212:

(20, 118801), (30, 118864), (Start: 37 @118882 has 2 MA's), (Start: 53 @118915 has 170 MA's), (59, 118933), (91, 119065), (96, 119083), (109, 119143), (127, 119251), (132, 119275), (149, 119338), (152, 119344),

Gene: Mufasa8_53 Start: 38883, Stop: 39419, Start Num: 16

Candidate Starts for Mufasa8_53:

(Start: 16 @38883 has 1 MA's), (26, 38925), (61, 39039), (62, 39042), (78, 39084), (94, 39129), (96, 39135), (99, 39144), (118, 39243), (125, 39282), (132, 39315), (159, 39408),

Gene: Naija_216 Start: 120251, Stop: 120706, Start Num: 53

Candidate Starts for Naija_216:

(20, 120137), (30, 120200), (Start: 37 @120218 has 2 MA's), (Start: 53 @120251 has 170 MA's), (59, 120269), (91, 120401), (96, 120419), (109, 120479), (127, 120587), (132, 120611), (149, 120674), (152, 120680),

Gene: Napoleon13_212 Start: 119279, Stop: 119734, Start Num: 53

Candidate Starts for Napoleon13_212:

(20, 119165), (30, 119228), (Start: 37 @119246 has 2 MA's), (Start: 53 @119279 has 170 MA's), (59, 119297), (91, 119429), (96, 119447), (109, 119507), (127, 119615), (132, 119639), (149, 119702), (152, 119708),

Gene: Nappy_216 Start: 120952, Stop: 121407, Start Num: 53

Candidate Starts for Nappy_216:

(20, 120838), (30, 120901), (Start: 37 @120919 has 2 MA's), (Start: 53 @120952 has 170 MA's), (59, 120970), (91, 121102), (96, 121120), (109, 121180), (127, 121288), (132, 121312), (149, 121375), (152, 121381),

Gene: Naval22_220 Start: 122028, Stop: 122483, Start Num: 53

Candidate Starts for Naval22_220:

(20, 121914), (30, 121977), (Start: 37 @121995 has 2 MA's), (Start: 53 @122028 has 170 MA's), (59, 122046), (91, 122178), (96, 122196), (109, 122256), (127, 122364), (132, 122388), (149, 122451),

(152, 122457),

Gene: NedWong_214 Start: 120684, Stop: 121139, Start Num: 53

Candidate Starts for NedWong_214:

(20, 120570), (30, 120633), (Start: 37 @120651 has 2 MA's), (Start: 53 @120684 has 170 MA's), (59, 120702), (91, 120834), (96, 120852), (109, 120912), (127, 121020), (132, 121044), (149, 121107), (152, 121113),

Gene: Neville_76 Start: 48231, Stop: 48671, Start Num: 48

Candidate Starts for Neville_76:

(43, 48225), (Start: 48 @48231 has 4 MA's), (58, 48240), (86, 48333), (92, 48360), (103, 48402), (108, 48423), (109, 48426), (111, 48444), (118, 48489), (132, 48558), (134, 48564), (136, 48570), (137, 48573), (140, 48582), (149, 48621),

Gene: Ngannou_212 Start: 118530, Stop: 118985, Start Num: 53

Candidate Starts for Ngannou_212:

(20, 118416), (30, 118479), (Start: 37 @118497 has 2 MA's), (Start: 53 @118530 has 170 MA's), (59, 118548), (91, 118680), (96, 118698), (109, 118758), (127, 118866), (132, 118890), (149, 118953), (152, 118959),

Gene: Nidhogg_216 Start: 121077, Stop: 121532, Start Num: 53

Candidate Starts for Nidhogg_216:

(20, 120963), (30, 121026), (Start: 37 @121044 has 2 MA's), (Start: 53 @121077 has 170 MA's), (59, 121095), (91, 121227), (96, 121245), (109, 121305), (127, 121413), (132, 121437), (149, 121500), (152, 121506),

Gene: NoSwimming_53 Start: 38737, Stop: 39144, Start Num: 48

Candidate Starts for NoSwimming_53:

(Start: 48 @38737 has 4 MA's), (72, 38809),

Gene: NoodleTree_221 Start: 120984, Stop: 121439, Start Num: 53

Candidate Starts for NoodleTree_221:

(20, 120870), (30, 120933), (Start: 37 @120951 has 2 MA's), (Start: 53 @120984 has 170 MA's), (59, 121002), (91, 121134), (96, 121152), (109, 121212), (127, 121320), (132, 121344), (149, 121407), (152, 121413),

Gene: Norm_215 Start: 120986, Stop: 121441, Start Num: 53

Candidate Starts for Norm_215:

(20, 120872), (30, 120935), (Start: 37 @120953 has 2 MA's), (Start: 53 @120986 has 170 MA's), (59, 121004), (91, 121136), (96, 121154), (109, 121214), (127, 121322), (132, 121346), (149, 121409), (152, 121415),

Gene: NuevoMundo_218 Start: 121545, Stop: 122000, Start Num: 53

Candidate Starts for NuevoMundo_218:

(20, 121431), (30, 121494), (Start: 37 @121512 has 2 MA's), (Start: 53 @121545 has 170 MA's), (59, 121563), (91, 121695), (96, 121713), (109, 121773), (127, 121881), (132, 121905), (149, 121968), (152, 121974),

Gene: Octobien14_83 Start: 49218, Stop: 49616, Start Num: 52

Candidate Starts for Octobien14_83:

(32, 49179), (Start: 52 @49218 has 4 MA's), (58, 49230), (59, 49236), (77, 49290), (93, 49344), (99, 49371), (106, 49398), (109, 49407), (111, 49425), (118, 49467), (119, 49476), (145, 49587),

Gene: Orcanus_43 Start: 29287, Stop: 29754, Start Num: 29

Candidate Starts for Orcanus_43:

(Start: 29 @29287 has 28 MA's), (Start: 40 @29323 has 1 MA's), (61, 29383), (85, 29449), (96, 29485), (113, 29563), (116, 29575), (121, 29608), (127, 29635), (132, 29659), (147, 29716), (155, 29737), (156, 29743),

Gene: ParkTD_214 Start: 120548, Stop: 121003, Start Num: 53

Candidate Starts for ParkTD_214:

(20, 120434), (30, 120497), (Start: 37 @120515 has 2 MA's), (Start: 53 @120548 has 170 MA's), (59, 120566), (91, 120698), (96, 120716), (109, 120776), (127, 120884), (132, 120908), (149, 120971), (152, 120977),

Gene: Patter_216 Start: 119562, Stop: 120017, Start Num: 53

Candidate Starts for Patter_216:

(20, 119448), (30, 119511), (Start: 37 @119529 has 2 MA's), (Start: 53 @119562 has 170 MA's), (59, 119580), (91, 119712), (96, 119730), (109, 119790), (127, 119898), (132, 119922), (149, 119985), (152, 119991),

Gene: Pelletreau_52 Start: 29743, Stop: 30210, Start Num: 29

Candidate Starts for Pelletreau_52:

(Start: 29 @29743 has 28 MA's), (Start: 40 @29779 has 1 MA's), (61, 29839), (85, 29905), (96, 29941), (101, 29959), (113, 30019), (121, 30064), (127, 30091), (132, 30115), (134, 30121), (147, 30172), (156, 30199),

Gene: Persistence_79 Start: 45632, Stop: 46033, Start Num: 47

Candidate Starts for Persistence_79:

(38, 45617), (Start: 47 @45632 has 1 MA's), (76, 45707), (81, 45716), (143, 45992),

Gene: Phlegm_219 Start: 120251, Stop: 120706, Start Num: 53

Candidate Starts for Phlegm_219:

(20, 120137), (30, 120200), (Start: 37 @120218 has 2 MA's), (Start: 53 @120251 has 170 MA's), (59, 120269), (91, 120401), (96, 120419), (109, 120479), (127, 120587), (132, 120611), (149, 120674), (152, 120680),

Gene: PhluffyCoco_45 Start: 28438, Stop: 28911, Start Num: 29

Candidate Starts for PhluffyCoco_45:

(Start: 29 @28438 has 28 MA's), (Start: 40 @28474 has 1 MA's), (66, 28555), (77, 28579), (96, 28639), (101, 28657), (121, 28765), (123, 28777), (147, 28873),

Gene: Phox_216 Start: 120213, Stop: 120668, Start Num: 53

Candidate Starts for Phox_216:

(20, 120099), (30, 120162), (Start: 37 @120180 has 2 MA's), (Start: 53 @120213 has 170 MA's), (59, 120231), (91, 120363), (96, 120381), (109, 120441), (127, 120549), (132, 120573), (149, 120636), (152, 120642),

Gene: Phrank15_92 Start: 49189, Stop: 49614, Start Num: 49

Candidate Starts for Phrank15_92:

(Start: 49 @49189 has 17 MA's), (Start: 53 @49201 has 170 MA's), (59, 49216), (63, 49246), (69, 49252), (78, 49276), (104, 49366), (109, 49384), (116, 49423), (118, 49435), (151, 49579),

Gene: Phusco_213 Start: 119083, Stop: 119538, Start Num: 53

Candidate Starts for Phusco_213:

(20, 118969), (30, 119032), (Start: 37 @119050 has 2 MA's), (Start: 53 @119083 has 170 MA's), (59, 119101), (91, 119233), (96, 119251), (109, 119311), (127, 119419), (132, 119443), (149, 119506), (152, 119512),

Gene: Pier_216 Start: 121090, Stop: 121545, Start Num: 53

Candidate Starts for Pier_216:

(20, 120976), (30, 121039), (Start: 37 @121057 has 2 MA's), (Start: 53 @121090 has 170 MA's), (59, 121108), (91, 121240), (96, 121258), (109, 121318), (127, 121426), (132, 121450), (149, 121513), (152, 121519),

Gene: Pigu_64 Start: 34020, Stop: 34448, Start Num: 38

Candidate Starts for Pigu_64:

(7, 33813), (38, 34020), (Start: 47 @34035 has 1 MA's), (81, 34131), (103, 34221), (143, 34407),

Gene: Pinkcreek_199 Start: 118466, Stop: 118921, Start Num: 53

Candidate Starts for Pinkcreek_199:

(20, 118352), (30, 118415), (Start: 37 @118433 has 2 MA's), (Start: 53 @118466 has 170 MA's), (59, 118484), (91, 118616), (96, 118634), (109, 118694), (127, 118802), (132, 118826), (149, 118889), (152, 118895),

Gene: Pio_223 Start: 122282, Stop: 122737, Start Num: 53

Candidate Starts for Pio_223:

(20, 122168), (30, 122231), (Start: 37 @122249 has 2 MA's), (Start: 53 @122282 has 170 MA's), (59, 122300), (91, 122432), (96, 122450), (109, 122510), (127, 122618), (132, 122642), (149, 122705), (152, 122711),

Gene: Pivoine_216 Start: 120251, Stop: 120706, Start Num: 53

Candidate Starts for Pivoine_216:

(20, 120137), (30, 120200), (Start: 37 @120218 has 2 MA's), (Start: 53 @120251 has 170 MA's), (59, 120269), (91, 120401), (96, 120419), (109, 120479), (127, 120587), (132, 120611), (149, 120674), (152, 120680),

Gene: Pleione_219 Start: 121026, Stop: 121481, Start Num: 53

Candidate Starts for Pleione_219:

(20, 120912), (30, 120975), (Start: 37 @120993 has 2 MA's), (Start: 53 @121026 has 170 MA's), (59, 121044), (91, 121176), (96, 121194), (109, 121254), (127, 121362), (132, 121386), (149, 121449), (152, 121455),

Gene: Polka_43 Start: 27134, Stop: 27601, Start Num: 29

Candidate Starts for Polka_43:

(19, 27077), (Start: 29 @27134 has 28 MA's), (Start: 40 @27170 has 1 MA's), (61, 27230), (80, 27281), (85, 27296), (87, 27299), (96, 27332), (113, 27410), (116, 27422), (127, 27482), (132, 27506), (145, 27557), (147, 27563), (155, 27584), (156, 27590),

Gene: PurduePete_215 Start: 121254, Stop: 121709, Start Num: 53

Candidate Starts for PurduePete_215:

(20, 121140), (30, 121203), (Start: 37 @121221 has 2 MA's), (Start: 53 @121254 has 170 MA's), (59, 121272), (91, 121404), (96, 121422), (109, 121482), (127, 121590), (132, 121614), (149, 121677), (152, 121683),

Gene: Purky_56 Start: 37685, Stop: 38155, Start Num: 34

Candidate Starts for Purky_56:

(Start: 34 @37685 has 2 MA's), (59, 37736), (64, 37775), (71, 37805), (96, 37883), (108, 37934), (123, 38033), (127, 38045), (128, 38048), (134, 38075), (147, 38126), (149, 38132), (153, 38141),

Gene: QBert_207 Start: 118614, Stop: 119069, Start Num: 53

Candidate Starts for QBert_207:

(20, 118500), (30, 118563), (Start: 37 @118581 has 2 MA's), (Start: 53 @118614 has 170 MA's), (59, 118632), (91, 118764), (96, 118782), (109, 118842), (127, 118950), (132, 118974), (149, 119037), (152, 119043),

Gene: Quasimodo_217 Start: 119884, Stop: 120339, Start Num: 53

Candidate Starts for Quasimodo_217:

(20, 119770), (30, 119833), (Start: 37 @119851 has 2 MA's), (Start: 53 @119884 has 170 MA's), (59, 119902), (91, 120034), (96, 120052), (109, 120112), (127, 120220), (132, 120244), (149, 120307), (152, 120313),

Gene: Rabbitrun_79 Start: 48496, Stop: 48996, Start Num: 48

Candidate Starts for Rabbitrun_79:

(43, 48490), (Start: 48 @48496 has 4 MA's), (58, 48505), (59, 48511), (68, 48553), (86, 48598), (92, 48625), (103, 48667), (108, 48688), (109, 48691), (111, 48709), (131, 48820), (132, 48823), (134, 48829), (136, 48835), (137, 48838), (149, 48886), (162, 48964),

Gene: Rabinovish_208 Start: 120159, Stop: 120614, Start Num: 53

Candidate Starts for Rabinovish_208:

(20, 120045), (30, 120108), (Start: 37 @120126 has 2 MA's), (Start: 53 @120159 has 170 MA's), (59, 120177), (91, 120309), (96, 120327), (109, 120387), (127, 120495), (132, 120519), (149, 120582), (152, 120588),

Gene: RadFad_91 Start: 48709, Stop: 49134, Start Num: 49

Candidate Starts for RadFad_91:

(33, 48679), (Start: 49 @48709 has 17 MA's), (Start: 53 @48721 has 170 MA's), (59, 48736), (63, 48766), (69, 48772), (78, 48796), (95, 48844), (104, 48886), (118, 48955), (151, 49099),

Gene: Rahel_216 Start: 119986, Stop: 120441, Start Num: 53

Candidate Starts for Rahel_216:

(20, 119872), (30, 119935), (Start: 37 @119953 has 2 MA's), (Start: 53 @119986 has 170 MA's), (59, 120004), (91, 120136), (96, 120154), (109, 120214), (127, 120322), (132, 120346), (149, 120409), (152, 120415),

Gene: Raphaella_86 Start: 47326, Stop: 47757, Start Num: 49

Candidate Starts for Raphaella_86:

(33, 47296), (Start: 49 @47326 has 17 MA's), (Start: 53 @47338 has 170 MA's), (59, 47353), (63, 47383), (69, 47389), (78, 47413), (95, 47461), (118, 47572), (151, 47716),

Gene: Raqqa_86 Start: 48107, Stop: 48511, Start Num: 51

Candidate Starts for Raqqa_86:

(14, 47966), (Start: 51 @48107 has 3 MA's), (69, 48164), (75, 48182), (78, 48188), (104, 48278), (109, 48296), (123, 48380), (139, 48431), (151, 48476),

Gene: Rattail_45 Start: 28560, Stop: 28997, Start Num: 40

Candidate Starts for Rattail_45:

(Start: 29 @28524 has 28 MA's), (Start: 40 @28560 has 1 MA's), (66, 28641), (77, 28665), (96, 28725), (101, 28743), (121, 28851), (123, 28863), (147, 28959),

Gene: RedFox_45 Start: 28437, Stop: 28910, Start Num: 29

Candidate Starts for RedFox_45:

(Start: 29 @28437 has 28 MA's), (Start: 40 @28473 has 1 MA's), (66, 28554), (77, 28578), (96, 28638), (101, 28656), (121, 28764), (123, 28776), (147, 28872),

Gene: Renna12_44 Start: 28294, Stop: 28767, Start Num: 29

Candidate Starts for Renna12_44:

(Start: 29 @28294 has 28 MA's), (Start: 40 @28330 has 1 MA's), (66, 28411), (77, 28435), (96, 28495), (101, 28513), (118, 28600), (121, 28621), (123, 28633), (147, 28729),

Gene: Richie_89 Start: 49559, Stop: 49984, Start Num: 49

Candidate Starts for Richie_89:

(33, 49529), (Start: 49 @49559 has 17 MA's), (Start: 53 @49571 has 170 MA's), (59, 49586), (63, 49616), (69, 49622), (78, 49646), (104, 49736), (151, 49949),

Gene: Rizal_207 Start: 118504, Stop: 118959, Start Num: 53

Candidate Starts for Rizal_207:

(20, 118390), (30, 118453), (Start: 37 @118471 has 2 MA's), (Start: 53 @118504 has 170 MA's), (59, 118522), (91, 118654), (96, 118672), (109, 118732), (127, 118840), (132, 118864), (149, 118927), (152, 118933),

Gene: RoMag_210 Start: 120297, Stop: 120752, Start Num: 53

Candidate Starts for RoMag_210:

(20, 120183), (30, 120246), (Start: 37 @120264 has 2 MA's), (Start: 53 @120297 has 170 MA's), (59, 120315), (91, 120447), (96, 120465), (109, 120525), (127, 120633), (132, 120657), (149, 120720), (152, 120726),

Gene: Ronan_211 Start: 118689, Stop: 119144, Start Num: 53

Candidate Starts for Ronan_211:

(20, 118575), (30, 118638), (Start: 37 @118656 has 2 MA's), (Start: 53 @118689 has 170 MA's), (59, 118707), (91, 118839), (96, 118857), (109, 118917), (127, 119025), (132, 119049), (149, 119112), (152, 119118),

Gene: Roots515_217 Start: 121805, Stop: 122260, Start Num: 53

Candidate Starts for Roots515_217:

(20, 121691), (30, 121754), (Start: 37 @121772 has 2 MA's), (Start: 53 @121805 has 170 MA's), (59, 121823), (91, 121955), (96, 121973), (109, 122033), (127, 122141), (132, 122165), (149, 122228), (152, 122234),

Gene: Ruchi_41 Start: 28118, Stop: 28588, Start Num: 29

Candidate Starts for Ruchi_41:

(Start: 29 @28118 has 28 MA's), (Start: 40 @28154 has 1 MA's), (42, 28160), (77, 28256), (88, 28295), (96, 28316), (101, 28334), (108, 28370), (127, 28469), (132, 28493), (138, 28511), (149, 28556), (156, 28577),

Gene: SVoro_212 Start: 120599, Stop: 121054, Start Num: 53

Candidate Starts for SVoro_212:

(20, 120485), (30, 120548), (Start: 37 @120566 has 2 MA's), (Start: 53 @120599 has 170 MA's), (59, 120617), (91, 120749), (96, 120767), (109, 120827), (127, 120935), (132, 120959), (149, 121022), (152, 121028),

Gene: Sakai_82 Start: 47520, Stop: 47945, Start Num: 49

Candidate Starts for Sakai_82:

(Start: 49 @47520 has 17 MA's), (Start: 53 @47532 has 170 MA's), (59, 47547), (63, 47577), (69, 47583), (119, 47775), (121, 47787), (151, 47910),

Gene: Salacia_215 Start: 120389, Stop: 120844, Start Num: 53

Candidate Starts for Salacia_215:

(20, 120275), (30, 120338), (Start: 37 @120356 has 2 MA's), (Start: 53 @120389 has 170 MA's), (59, 120407), (91, 120539), (96, 120557), (109, 120617), (127, 120725), (132, 120749), (149, 120812), (152, 120818),

Gene: Sarge_59 Start: 33281, Stop: 33694, Start Num: 46

Candidate Starts for Sarge_59:

(39, 33269), (Start: 46 @33281 has 3 MA's), (81, 33377), (103, 33467), (143, 33653),

Gene: Sauce_211 Start: 119212, Stop: 119667, Start Num: 53

Candidate Starts for Sauce_211:

(1, 118693), (20, 119098), (30, 119161), (Start: 37 @119179 has 2 MA's), (Start: 53 @119212 has 170 MA's), (59, 119230), (91, 119362), (96, 119380), (109, 119440), (127, 119548), (132, 119572), (149, 119635), (152, 119641),

Gene: Scotia_51 Start: 37733, Stop: 38152, Start Num: 48

Candidate Starts for Scotia_51:

(Start: 48 @37733 has 4 MA's), (81, 37826), (107, 37934),

Gene: ScottMcG_209 Start: 119282, Stop: 119737, Start Num: 53

Candidate Starts for ScottMcG_209:

(20, 119168), (30, 119231), (Start: 37 @119249 has 2 MA's), (Start: 53 @119282 has 170 MA's), (59, 119300), (91, 119432), (96, 119450), (109, 119510), (127, 119618), (132, 119642), (149, 119705), (152, 119711),

Gene: Seahorse_92 Start: 52725, Stop: 53156, Start Num: 49

Candidate Starts for Seahorse_92:

(19, 52620), (Start: 49 @52725 has 17 MA's), (Start: 53 @52737 has 170 MA's), (59, 52752), (63, 52782), (69, 52788), (78, 52812), (151, 53115),

Gene: Sebata_216 Start: 120719, Stop: 121174, Start Num: 53

Candidate Starts for Sebata_216:

(20, 120605), (30, 120668), (Start: 37 @120686 has 2 MA's), (Start: 53 @120719 has 170 MA's), (59, 120737), (91, 120869), (96, 120887), (109, 120947), (127, 121055), (132, 121079), (149, 121142), (152, 121148),

Gene: Sejanus_66 Start: 51688, Stop: 52152, Start Num: 34

Candidate Starts for Sejanus_66:

(Start: 34 @51688 has 2 MA's), (59, 51739), (64, 51778), (71, 51808), (96, 51886), (108, 51937), (123, 52036), (127, 52048), (128, 52051), (134, 52078), (147, 52129), (153, 52144),

Gene: Sephiroth_83 Start: 50078, Stop: 50476, Start Num: 52

Candidate Starts for Sephiroth_83:

(Start: 52 @50078 has 4 MA's), (58, 50090), (59, 50096), (77, 50150), (93, 50204), (99, 50231), (109, 50267), (111, 50285), (118, 50327), (119, 50336), (121, 50348), (145, 50447),

Gene: Shaqnato_206 Start: 119420, Stop: 119875, Start Num: 53

Candidate Starts for Shaqnato_206:

(20, 119306), (30, 119369), (Start: 37 @119387 has 2 MA's), (Start: 53 @119420 has 170 MA's), (59, 119438), (91, 119570), (96, 119588), (109, 119648), (127, 119756), (132, 119780), (149, 119843), (152, 119849),

Gene: Shelob_216 Start: 122160, Stop: 122615, Start Num: 53

Candidate Starts for Shelob_216:

(20, 122046), (30, 122109), (Start: 37 @122127 has 2 MA's), (Start: 53 @122160 has 170 MA's), (59, 122178), (91, 122310), (96, 122328), (109, 122388), (127, 122496), (132, 122520), (149, 122583), (152, 122589),

Gene: ShiaLabeouf_212 Start: 119194, Stop: 119649, Start Num: 53

Candidate Starts for ShiaLabeouf_212:

(20, 119080), (30, 119143), (Start: 37 @119161 has 2 MA's), (Start: 53 @119194 has 170 MA's), (59, 119212), (91, 119344), (96, 119362), (109, 119422), (127, 119530), (132, 119554), (149, 119617), (152, 119623),

Gene: Shifa_192 Start: 118778, Stop: 119233, Start Num: 53

Candidate Starts for Shifa_192:

(20, 118664), (30, 118727), (Start: 37 @118745 has 2 MA's), (Start: 53 @118778 has 170 MA's), (59, 118796), (91, 118928), (96, 118946), (109, 119006), (127, 119114), (132, 119138), (149, 119201), (152, 119207),

Gene: Shnickers_213 Start: 119258, Stop: 119713, Start Num: 53

Candidate Starts for Shnickers_213:

(20, 119144), (30, 119207), (Start: 37 @119225 has 2 MA's), (Start: 53 @119258 has 170 MA's), (59, 119276), (91, 119408), (96, 119426), (109, 119486), (127, 119594), (132, 119618), (149, 119681), (152, 119687),

Gene: Shoya_62 Start: 35352, Stop: 35765, Start Num: 46

Candidate Starts for Shoya_62:

(25, 35286), (Start: 46 @35352 has 3 MA's), (81, 35448), (103, 35538), (132, 35688),

Gene: Shrimp_217 Start: 121315, Stop: 121770, Start Num: 53

Candidate Starts for Shrimp_217:

(20, 121201), (30, 121264), (Start: 37 @121282 has 2 MA's), (Start: 53 @121315 has 170 MA's), (59, 121333), (91, 121465), (96, 121483), (109, 121543), (127, 121651), (132, 121675), (149, 121738), (152, 121744),

Gene: Shukran_82 Start: 46326, Stop: 46727, Start Num: 47

Candidate Starts for Shukran_82:

(38, 46311), (Start: 47 @46326 has 1 MA's), (69, 46386), (76, 46401), (81, 46410), (90, 46443), (143, 46686),

Gene: SilverDipper_219 Start: 120807, Stop: 121262, Start Num: 53

Candidate Starts for SilverDipper_219:

(20, 120693), (30, 120756), (Start: 37 @120774 has 2 MA's), (Start: 53 @120807 has 170 MA's), (59, 120825), (91, 120957), (96, 120975), (109, 121035), (127, 121143), (132, 121167), (149, 121230), (152, 121236),

Gene: SmallFry_215 Start: 119352, Stop: 119807, Start Num: 53

Candidate Starts for SmallFry_215:

(20, 119238), (30, 119301), (Start: 37 @119319 has 2 MA's), (Start: 53 @119352 has 170 MA's), (59, 119370), (91, 119502), (96, 119520), (109, 119580), (127, 119688), (132, 119712), (149, 119775),

(152, 119781),

Gene: Sonali_52 Start: 41017, Stop: 41565, Start Num: 17

Candidate Starts for Sonali_52:

(Start: 17 @41017 has 1 MA's), (26, 41059), (61, 41170), (69, 41191), (94, 41260), (132, 41446),

Gene: Spec_210 Start: 119543, Stop: 119998, Start Num: 53

Candidate Starts for Spec_210:

(20, 119429), (26, 119459), (30, 119492), (Start: 37 @119510 has 2 MA's), (Start: 53 @119543 has 170 MA's), (59, 119561), (91, 119693), (96, 119711), (109, 119771), (127, 119879), (132, 119903), (149, 119966), (152, 119972),

Gene: Specks_219 Start: 120668, Stop: 121123, Start Num: 53

Candidate Starts for Specks_219:

(20, 120554), (30, 120617), (Start: 37 @120635 has 2 MA's), (Start: 53 @120668 has 170 MA's), (59, 120686), (91, 120818), (96, 120836), (109, 120896), (127, 121004), (132, 121028), (149, 121091), (152, 121097),

Gene: SpicyFrank_87 Start: 47815, Stop: 48240, Start Num: 49

Candidate Starts for SpicyFrank_87:

(Start: 49 @47815 has 17 MA's), (Start: 53 @47827 has 170 MA's), (59, 47842), (63, 47872), (69, 47878), (78, 47902), (102, 47974), (104, 47992), (151, 48205),

Gene: Splinter_57 Start: 38151, Stop: 38588, Start Num: 36

Candidate Starts for Splinter_57:

(Start: 36 @38151 has 5 MA's), (42, 38160), (Start: 44 @38163 has 1 MA's), (59, 38187), (77, 38241), (84, 38262), (103, 38343), (109, 38367), (116, 38412),

Gene: Sprinklers_213 Start: 119910, Stop: 120365, Start Num: 53

Candidate Starts for Sprinklers_213:

(20, 119796), (30, 119859), (Start: 37 @119877 has 2 MA's), (Start: 53 @119910 has 170 MA's), (59, 119928), (91, 120060), (96, 120078), (109, 120138), (127, 120246), (132, 120270), (149, 120333), (152, 120339),

Gene: Spud_209 Start: 119622, Stop: 120077, Start Num: 53

Candidate Starts for Spud_209:

(20, 119508), (30, 119571), (Start: 37 @119589 has 2 MA's), (Start: 53 @119622 has 170 MA's), (59, 119640), (91, 119772), (96, 119790), (109, 119850), (127, 119958), (132, 119982), (149, 120045), (152, 120051),

Gene: Squiddly_91 Start: 53227, Stop: 53721, Start Num: 48

Candidate Starts for Squiddly_91:

(Start: 48 @53227 has 4 MA's), (70, 53281), (103, 53386), (108, 53407), (109, 53410), (116, 53455), (126, 53512), (131, 53536), (132, 53539), (134, 53545), (135, 53548), (149, 53602), (160, 53650),

Gene: SrishMeg2525_212 Start: 120786, Stop: 121241, Start Num: 53

Candidate Starts for SrishMeg2525_212:

(20, 120672), (30, 120735), (Start: 37 @120753 has 2 MA's), (Start: 53 @120786 has 170 MA's), (59, 120804), (91, 120936), (96, 120954), (109, 121014), (127, 121122), (132, 121146), (149, 121209), (152, 121215),

Gene: StephanieG_211 Start: 120820, Stop: 121275, Start Num: 53

Candidate Starts for StephanieG_211:

(20, 120706), (30, 120769), (Start: 37 @120787 has 2 MA's), (Start: 53 @120820 has 170 MA's), (59, 120838), (91, 120970), (96, 120988), (109, 121048), (127, 121156), (132, 121180), (149, 121243), (152, 121249),

Gene: StuartMinion_40 Start: 25394, Stop: 25864, Start Num: 29

Candidate Starts for StuartMinion_40:

(Start: 29 @25394 has 28 MA's), (Start: 40 @25430 has 1 MA's), (77, 25535), (85, 25559), (96, 25595), (99, 25604), (101, 25613), (116, 25685), (118, 25697), (121, 25718), (123, 25730), (133, 25772), (145, 25820), (148, 25829),

Gene: Stubby_199 Start: 118669, Stop: 119124, Start Num: 53

Candidate Starts for Stubby_199:

(20, 118555), (30, 118618), (Start: 37 @118636 has 2 MA's), (Start: 53 @118669 has 170 MA's), (59, 118687), (91, 118819), (96, 118837), (109, 118897), (127, 119005), (132, 119029), (149, 119092), (152, 119098),

Gene: StubbySaigey_220 Start: 120341, Stop: 120796, Start Num: 53

Candidate Starts for StubbySaigey_220:

(20, 120227), (30, 120290), (Start: 37 @120308 has 2 MA's), (Start: 53 @120341 has 170 MA's), (59, 120359), (91, 120491), (96, 120509), (109, 120569), (127, 120677), (132, 120701), (149, 120764), (152, 120770),

Gene: Sunshine23_54 Start: 40949, Stop: 41446, Start Num: 26

Candidate Starts for Sunshine23_54:

(Start: 17 @40907 has 1 MA's), (26, 40949), (61, 41060), (69, 41081), (94, 41150), (132, 41336),

Gene: Syleon_86 Start: 50016, Stop: 50414, Start Num: 52

Candidate Starts for Syleon_86:

(Start: 52 @50016 has 4 MA's), (58, 50028), (59, 50034), (77, 50088), (93, 50142), (99, 50169), (109, 50205), (111, 50223), (118, 50265), (119, 50274), (121, 50286), (145, 50385),

Gene: TZGordon_58 Start: 37043, Stop: 37483, Start Num: 36

Candidate Starts for TZGordon_58:

(Start: 36 @37043 has 5 MA's), (Start: 47 @37058 has 1 MA's), (59, 37082), (77, 37136), (103, 37238), (109, 37262), (116, 37307),

Gene: Tainan_216 Start: 119687, Stop: 120142, Start Num: 53

Candidate Starts for Tainan_216:

(20, 119573), (30, 119636), (Start: 37 @119654 has 2 MA's), (Start: 53 @119687 has 170 MA's), (59, 119705), (91, 119837), (96, 119855), (109, 119915), (127, 120023), (132, 120047), (149, 120110), (152, 120116),

Gene: TaylorSipht_43 Start: 28692, Stop: 29159, Start Num: 29

Candidate Starts for TaylorSipht_43:

(Start: 29 @28692 has 28 MA's), (30, 28704), (Start: 40 @28728 has 1 MA's), (77, 28830), (85, 28854), (96, 28890), (98, 28896), (101, 28908), (108, 28944), (112, 28968), (127, 29040), (132, 29064), (138, 29082), (142, 29097), (156, 29148),

Gene: Teardrop_212 Start: 118854, Stop: 119309, Start Num: 53

Candidate Starts for Teardrop_212:

(20, 118740), (30, 118803), (Start: 37 @118821 has 2 MA's), (Start: 53 @118854 has 170 MA's), (59, 118872), (91, 119004), (96, 119022), (109, 119082), (127, 119190), (132, 119214), (149, 119277), (152, 119283),

Gene: Teng_45 Start: 25920, Stop: 25498, Start Num: 45

Candidate Starts for Teng_45:

(22, 25998), (Start: 45 @25920 has 3 MA's), (69, 25854), (93, 25785), (96, 25773), (106, 25722), (109, 25713), (128, 25608),

Gene: ThayneTheZag_91 Start: 48711, Stop: 49115, Start Num: 51

Candidate Starts for ThayneTheZag_91:

(Start: 51 @48711 has 3 MA's), (59, 48732), (69, 48768), (78, 48792), (104, 48882), (109, 48900), (123, 48984), (139, 49035), (151, 49080),

Gene: Tiff81_86 Start: 46437, Stop: 46868, Start Num: 49

Candidate Starts for Tiff81_86:

(18, 46326), (42, 46428), (Start: 49 @46437 has 17 MA's), (Start: 53 @46449 has 170 MA's), (63, 46494), (69, 46500), (78, 46524), (151, 46827),

Gene: TinyTim_213 Start: 119635, Stop: 120090, Start Num: 53

Candidate Starts for TinyTim_213:

(20, 119521), (30, 119584), (Start: 37 @119602 has 2 MA's), (Start: 53 @119635 has 170 MA's), (59, 119653), (91, 119785), (96, 119803), (109, 119863), (127, 119971), (132, 119995), (149, 120058), (152, 120064),

Gene: Toad24_45 Start: 29983, Stop: 30450, Start Num: 29

Candidate Starts for Toad24_45:

(Start: 29 @29983 has 28 MA's), (Start: 40 @30019 has 1 MA's), (61, 30079), (85, 30145), (96, 30181), (101, 30199), (113, 30259), (127, 30331), (132, 30355), (134, 30361), (147, 30412), (155, 30433), (156, 30439),

Gene: Tonenili_237 Start: 125468, Stop: 125920, Start Num: 53

Candidate Starts for Tonenili_237:

(20, 125354), (30, 125417), (Start: 37 @125435 has 2 MA's), (39, 125438), (Start: 53 @125468 has 170 MA's), (59, 125486), (96, 125636), (109, 125696), (127, 125804), (132, 125828),

Gene: Tortoise16_213 Start: 120097, Stop: 120552, Start Num: 53

Candidate Starts for Tortoise16_213:

(20, 119983), (30, 120046), (Start: 37 @120064 has 2 MA's), (Start: 53 @120097 has 170 MA's), (59, 120115), (91, 120247), (96, 120265), (109, 120325), (127, 120433), (132, 120457), (149, 120520), (152, 120526),

Gene: Trax_79 Start: 49196, Stop: 49636, Start Num: 48

Candidate Starts for Trax_79:

(43, 49190), (Start: 48 @49196 has 4 MA's), (58, 49205), (86, 49298), (92, 49325), (103, 49367), (108, 49388), (109, 49391), (111, 49409), (118, 49454), (132, 49523), (134, 49529), (136, 49535), (137, 49538), (140, 49547), (149, 49586),

Gene: Trinitium_211 Start: 118389, Stop: 118844, Start Num: 53

Candidate Starts for Trinitium_211:

(20, 118275), (30, 118338), (Start: 37 @118356 has 2 MA's), (Start: 53 @118389 has 170 MA's), (59, 118407), (91, 118539), (96, 118557), (109, 118617), (127, 118725), (132, 118749), (149, 118812), (152, 118818),

Gene: TurkishDelight_64 Start: 53655, Stop: 54263, Start Num: 12

Candidate Starts for TurkishDelight_64:

(Start: 12 @53655 has 1 MA's), (35, 53787), (61, 53856), (62, 53859), (78, 53901), (98, 53967), (99, 53970), (117, 54060), (118, 54069), (137, 54159), (144, 54189), (146, 54198), (150, 54207),

Gene: Turret_208 Start: 117971, Stop: 118426, Start Num: 53

Candidate Starts for Turret_208:

(20, 117857), (30, 117920), (Start: 37 @117938 has 2 MA's), (Start: 53 @117971 has 170 MA's), (59, 117989), (91, 118121), (96, 118139), (109, 118199), (127, 118307), (132, 118331), (149, 118394), (152, 118400),

Gene: Tyke_213 Start: 121464, Stop: 121919, Start Num: 53

Candidate Starts for Tyke_213:

(20, 121350), (30, 121413), (Start: 37 @121431 has 2 MA's), (Start: 53 @121464 has 170 MA's), (59, 121482), (91, 121614), (96, 121632), (109, 121692), (127, 121800), (132, 121824), (149, 121887), (152, 121893),

Gene: ValleyTerrace_216 Start: 119548, Stop: 120003, Start Num: 53

Candidate Starts for ValleyTerrace_216:

(20, 119434), (30, 119497), (Start: 37 @119515 has 2 MA's), (Start: 53 @119548 has 170 MA's), (59, 119566), (91, 119698), (96, 119716), (109, 119776), (127, 119884), (132, 119908), (149, 119971), (152, 119977),

Gene: Vendetta_57 Start: 38151, Stop: 38588, Start Num: 36

Candidate Starts for Vendetta_57:

(Start: 36 @38151 has 5 MA's), (42, 38160), (Start: 44 @38163 has 1 MA's), (59, 38187), (77, 38241), (84, 38262), (103, 38343), (109, 38367), (116, 38412),

Gene: Vopal_87 Start: 49392, Stop: 49823, Start Num: 49

Candidate Starts for Vopal_87:

(33, 49362), (Start: 49 @49392 has 17 MA's), (Start: 53 @49404 has 170 MA's), (59, 49419), (63, 49449), (69, 49455), (78, 49479), (95, 49527), (118, 49638), (151, 49782),

Gene: Vulpecula_41 Start: 27795, Stop: 28265, Start Num: 29

Candidate Starts for Vulpecula_41:

(Start: 29 @27795 has 28 MA's), (Start: 40 @27831 has 1 MA's), (42, 27837), (77, 27933), (83, 27954), (88, 27972), (96, 27993), (101, 28011), (108, 28047), (127, 28146), (132, 28170), (138, 28188), (149, 28233), (156, 28254),

Gene: Wally_213 Start: 119532, Stop: 119987, Start Num: 53

Candidate Starts for Wally_213:

(20, 119418), (30, 119481), (Start: 37 @119499 has 2 MA's), (Start: 53 @119532 has 170 MA's), (59, 119550), (91, 119682), (96, 119700), (109, 119760), (127, 119868), (132, 119892), (149, 119955), (152, 119961),

Gene: Westrich_51 Start: 29667, Stop: 30134, Start Num: 29

Candidate Starts for Westrich_51:

(Start: 29 @29667 has 28 MA's), (Start: 40 @29703 has 1 MA's), (61, 29763), (85, 29829), (96, 29865), (101, 29883), (113, 29943), (121, 29988), (127, 30015), (132, 30039), (134, 30045), (147, 30096), (156, 30123),

Gene: Willis_216 Start: 120446, Stop: 120901, Start Num: 53

Candidate Starts for Willis_216:

(20, 120332), (30, 120395), (Start: 37 @120413 has 2 MA's), (Start: 53 @120446 has 170 MA's), (59, 120464), (91, 120596), (96, 120614), (109, 120674), (127, 120782), (132, 120806), (149, 120869),

(152, 120875),

Gene: Windest_89 Start: 47044, Stop: 47469, Start Num: 49

Candidate Starts for Windest_89:

(33, 47014), (Start: 49 @47044 has 17 MA's), (Start: 53 @47056 has 170 MA's), (59, 47071), (63, 47101), (69, 47107), (78, 47131), (104, 47221), (151, 47434),

Gene: Wrackline_55 Start: 29872, Stop: 29441, Start Num: 47

Candidate Starts for Wrackline_55:

(24, 29953), (28, 29920), (41, 29881), (Start: 47 @29872 has 1 MA's), (Start: 49 @29869 has 17 MA's), (56, 29854), (62, 29824), (67, 29806), (74, 29788), (79, 29776), (97, 29716), (101, 29695), (103, 29680), (104, 29674), (119, 29593), (127, 29554), (132, 29530), (137, 29515), (154, 29455), (155, 29452),

Gene: Xavia_55 Start: 40820, Stop: 41251, Start Num: 37

Candidate Starts for Xavia_55:

(15, 40712), (Start: 37 @40820 has 2 MA's), (55, 40856), (57, 40859), (96, 40988), (98, 41003), (104, 41024), (118, 41102), (126, 41144), (131, 41168), (135, 41180), (145, 41222),

Gene: Yassified_212 Start: 119896, Stop: 120351, Start Num: 53

Candidate Starts for Yassified_212:

(1, 119377), (20, 119782), (30, 119845), (Start: 37 @119863 has 2 MA's), (Start: 53 @119896 has 170 MA's), (59, 119914), (91, 120046), (96, 120064), (109, 120124), (127, 120232), (132, 120256), (149, 120319), (152, 120325),

Gene: YemiJoy2021_216 Start: 121202, Stop: 121657, Start Num: 53

Candidate Starts for YemiJoy2021_216:

(20, 121088), (30, 121151), (Start: 37 @121169 has 2 MA's), (Start: 53 @121202 has 170 MA's), (59, 121220), (91, 121352), (96, 121370), (109, 121430), (127, 121538), (132, 121562), (149, 121625), (152, 121631),

Gene: YoungHarleezy_85 Start: 48839, Stop: 49270, Start Num: 49

Candidate Starts for YoungHarleezy_85:

(33, 48809), (Start: 49 @48839 has 17 MA's), (Start: 53 @48851 has 170 MA's), (59, 48866), (63, 48896), (69, 48902), (78, 48926), (151, 49229),

Gene: YoungMoneyMata_214 Start: 120016, Stop: 120471, Start Num: 53

Candidate Starts for YoungMoneyMata_214:

(20, 119902), (30, 119965), (Start: 37 @119983 has 2 MA's), (Start: 53 @120016 has 170 MA's), (59, 120034), (91, 120166), (96, 120184), (109, 120244), (127, 120352), (132, 120376), (149, 120439), (152, 120445),

Gene: Yucca_215 Start: 121194, Stop: 121649, Start Num: 53

Candidate Starts for Yucca_215:

(20, 121080), (30, 121143), (Start: 37 @121161 has 2 MA's), (Start: 53 @121194 has 170 MA's), (59, 121212), (91, 121344), (96, 121362), (109, 121422), (127, 121530), (132, 121554), (149, 121617), (152, 121623),

Gene: Zalkecks_214 Start: 120275, Stop: 120730, Start Num: 53

Candidate Starts for Zalkecks_214:

(20, 120161), (30, 120224), (Start: 37 @120242 has 2 MA's), (Start: 53 @120275 has 170 MA's), (59, 120293), (91, 120425), (96, 120443), (109, 120503), (127, 120611), (132, 120635), (149, 120698), (152, 120704),

Gene: Zeenon_217 Start: 120846, Stop: 121301, Start Num: 53

Candidate Starts for Zeenon_217:

(20, 120732), (30, 120795), (Start: 37 @120813 has 2 MA's), (Start: 53 @120846 has 170 MA's), (59, 120864), (91, 120996), (96, 121014), (109, 121074), (127, 121182), (132, 121206), (149, 121269), (152, 121275),

Gene: Zhuangyuan_50 Start: 28900, Stop: 29361, Start Num: 29

Candidate Starts for Zhuangyuan_50:

(Start: 29 @28900 has 28 MA's), (Start: 40 @28936 has 1 MA's), (60, 28993), (77, 29041), (85, 29065), (96, 29107), (121, 29227), (133, 29281), (134, 29284), (149, 29341), (153, 29350),

Gene: Zucker_84 Start: 49086, Stop: 49490, Start Num: 51

Candidate Starts for Zucker_84:

(3, 48822), (4, 48828), (5, 48840), (20, 48981), (Start: 51 @49086 has 3 MA's), (63, 49137), (69, 49143), (75, 49161), (78, 49167), (104, 49257), (109, 49275), (123, 49359), (139, 49410), (151, 49455),

Gene: ZygoTaiga_212 Start: 121466, Stop: 121921, Start Num: 53

Candidate Starts for ZygoTaiga_212:

(20, 121352), (30, 121415), (Start: 37 @121433 has 2 MA's), (Start: 53 @121466 has 170 MA's), (59, 121484), (91, 121616), (96, 121634), (109, 121694), (127, 121802), (132, 121826), (149, 121889), (152, 121895),