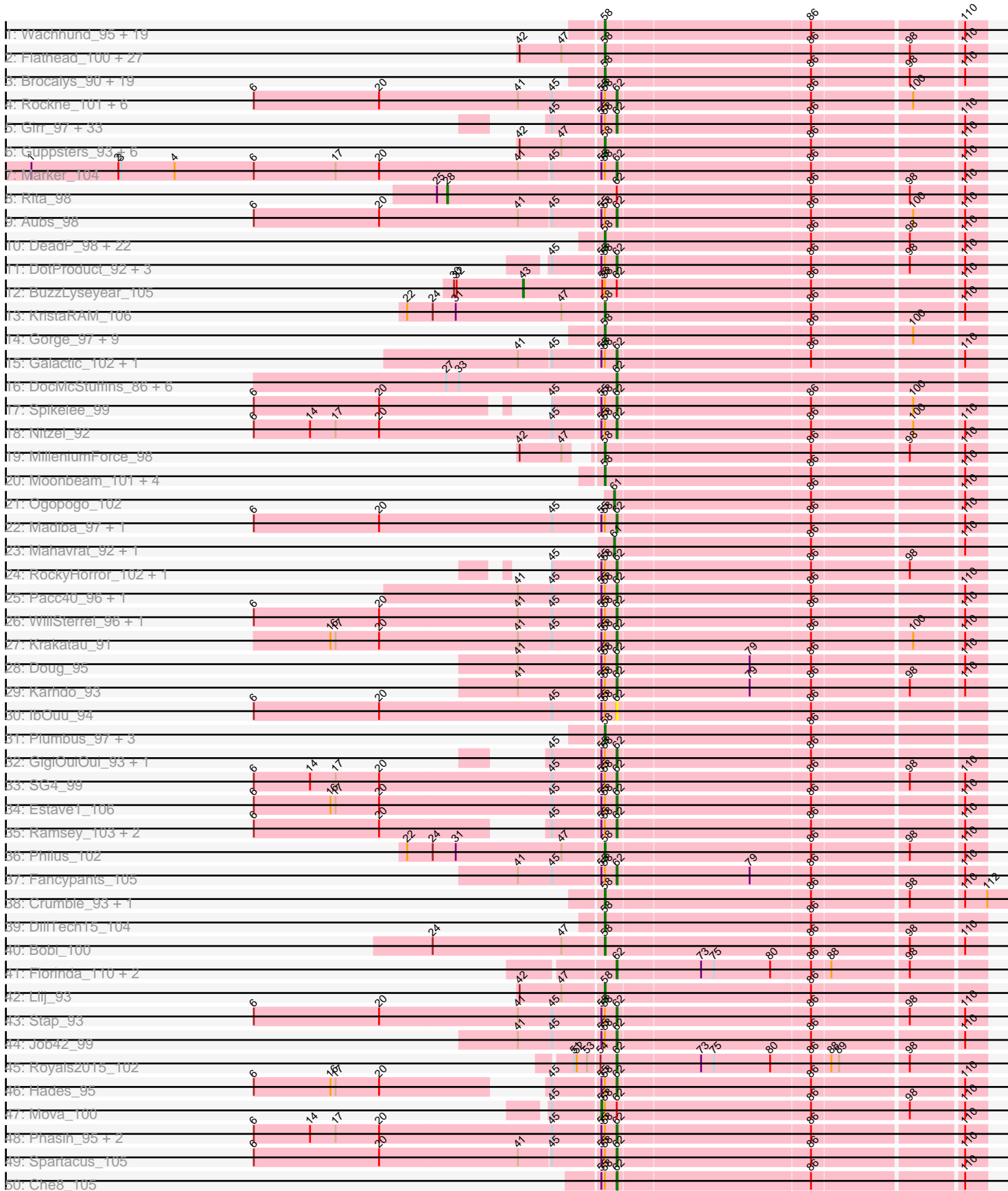
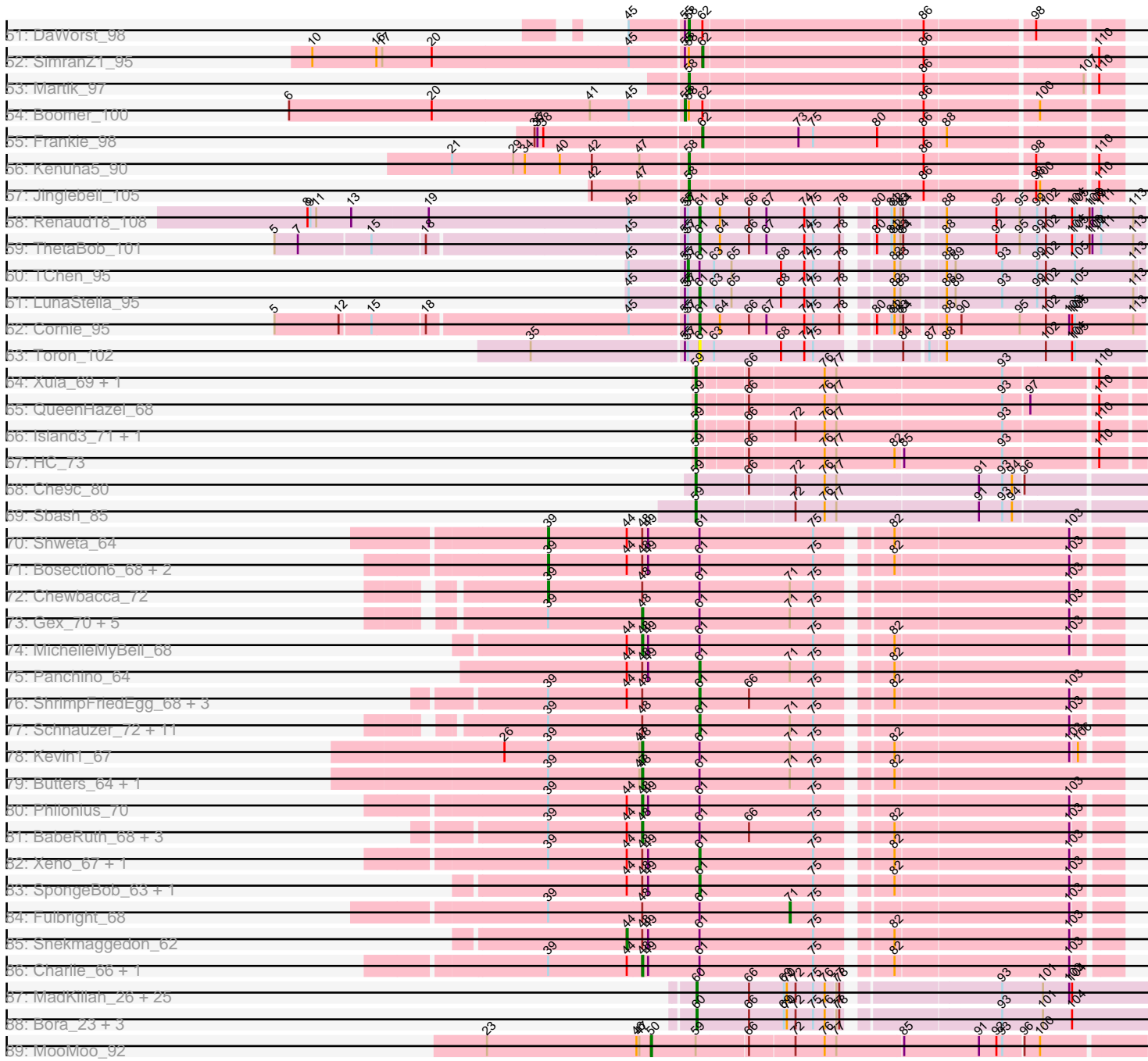


Pham 202610



Pham 202610



Note: Tracks are now grouped by subcluster and scaled. Switching in subcluster is indicated by changes in track color. Track scale is now set by default to display the region 30 bp upstream of start 1 to 30 bp downstream of the last possible start. If this default region is judged to be packed too tightly with annotated starts, the track will be further scaled to only show that region of the ORF with annotated starts. This action will be indicated by adding "Zoomed" to the title. For starts, yellow indicates the location of called starts comprised solely of Glimmer/GeneMark auto-annotations, green indicates the location of called starts with at least 1 manual gene annotation.

Pham 202610 Report

This analysis was run 01/18/25 on database version 583.

Pham number 202610 has 318 members, 19 are drafts.

Phages represented in each track:

- Track 1 : Wachhund_95, ArcusAngelus_98, AlpineSix_96, Llama_105, Seabastian_105, Latretium_101, Ovechkin_101, ByChance_89, Yorick_94, Grimmer_106, Chevrolet_102, OfUltron_105, Ochi17_104, Ibhubesi_95, Kersh_101, Eradicator_90, Modragons_102, Harley_100, Vivum_100, Byougenkin_95
- Track 2 : Flathead_100, JalFarm20_107, CaptainTrips_100, Hlubikazi_96, DosHalletts_95, Tootsieroll_92, Zerg_96, Phalconet_99, Ardmore_82, Hamulus_98, Firehouse51_92, Ms6_100, Squirty_97, Phatniss_96, MilanaBonita_91, Whatsapiecost_92, Mandlovu_96, Strokeseat_96, Filuzino_98, DLane_98, Melissauren88_88, Sabbb_101, Beakin_90, SuperGrey_98, OwlsT2W_96, Seagreen_99, Akhila_92, Dante_96
- Track 3 : Brocalys_90, Zizzle_101, Cabrinians_95, Clifton_90, Eish_103, Bubbles123_92, LastJedi_89, BobaPhett_100, Pippy_96, Burwell21_92, James_102, FreddyB_108, Lizziana_99, NormanBulbieJr_96, Maravista_95, SwagPiggett_100, Blexus_95, Koella_91, Priscilla_99, ShowerHandel_99
- Track 4 : Rockne_101, Enby_102, DirtMcgirt_99, UncleRicky_98, Drago_97, PMC_97, Lorde_101
- Track 5 : Girr_97, Pollywog_100, Ruby_95, Daenerys_96, BodEinwohner17_108, Juice456_97, Inventum_96, Sassafras_100, Scottish_98, PHappiness_98, RitaG_97, KingMidas_98, Dorothy_99, JoeyJr_101, Polka14_102, Leperchaun_100, Geralt_91, SiSi_94, OldBen_95, MadMen_103, RedBird_99, Leozinho_95, Radiance_96, Veteran_89, Poenanya_102, Deb65_91, Empress_98, Nimbo_90, MisterCuddles_98, MulchExplorer_102, Doomphist_103, DaddyRickover_100, Kimberlium_100, QuickMath_99
- Track 6 : Guppsters_93, PhesterPhotato_102, Donkeykong_104, StAnnes_102, Alexphander_99, EleanorGeorge_102, MinionDave_96
- Track 7 : Marker_104
- Track 8 : Rita_98
- Track 9 : Aubs_98
- Track 10 : DeadP_98, Brushbloom_104, Coco12_99, Phanphagia_103, Batiatus_98, Mozy_102, Chuckly_95, SassyB_89, Cerasum_97, Emma_103, LittleShirley_106, Fruitloop_96, Kingsley_107, Hegedechwinu_106, Taj_104, Velveteen_95, PopTart_89, XFactor_89, Wee_101, Bipolar_100, BigPhil_95, Sarma624_100, Shauna1_100
- Track 11 : DotProduct_92, IMpilo_96, Tweety_99, Fastidio_102
- Track 12 : BuzzLyseyear_105
- Track 13 : KristaRAM_106

- Track 14 : Gorge_97, Saal_96, Mattes_99, LilMoolah_101, Nivrat_98, ShiLan_101, JarcoB_101, Sandalphon_98, Spoonbill_98, Minnie_93
- Track 15 : Galactic_102, LunaBlu_105
- Track 16 : DocMcStuffins_86, Misha28_88, Aloeri_92, Awesomesauce_89, TootsiePop_88, Piper2020_93, ChickenDinner_92
- Track 17 : Spikelee_99
- Track 18 : Nitzel_92
- Track 19 : MilleniumForce_98
- Track 20 : Moonbeam_101, Starcevich_100, Oksu_102, Rialto_103, Totinger_101
- Track 21 : Ogopogo_102
- Track 22 : Madiba_97, MulchSalad_100
- Track 23 : Mahavrat_92, Juniper1_90
- Track 24 : RockyHorror_102, GUmbie_97
- Track 25 : Pacc40_96, BlueCrab_101
- Track 26 : WillSterrel_96, IrishSherpFalk_98
- Track 27 : Krakatau_91
- Track 28 : Doug_95
- Track 29 : Karhdo_93
- Track 30 : IbOuu_94
- Track 31 : Plumbus_97, DRBy19_98, TDanisky_106, Sparkdehlily_105
- Track 32 : GigiOuiOui_93, Mantra_96
- Track 33 : SG4_99
- Track 34 : Estave1_106
- Track 35 : Ramsey_103, VRedHorse_99, Cornucopia_98
- Track 36 : Philus_102
- Track 37 : Fancypants_105
- Track 38 : Crumble_93, OlympiaSaint_102
- Track 39 : DillTech15_104
- Track 40 : Bobi_100
- Track 41 : Florinda_110, Girafales_107, Quico_107
- Track 42 : Llij_93
- Track 43 : Stap_93
- Track 44 : Job42_99
- Track 45 : Royals2015_102
- Track 46 : Hades_95
- Track 47 : Mova_100
- Track 48 : Phasih_95, Gandalph_98, ShroomBoi_96
- Track 49 : Spartacus_105
- Track 50 : Che8_105
- Track 51 : DaWorst_98
- Track 52 : SimranZ1_95
- Track 53 : Martik_97
- Track 54 : Boomer_100
- Track 55 : Frankie_98
- Track 56 : Kenuha5_90
- Track 57 : Jinglebell_105
- Track 58 : Renaud18_108
- Track 59 : ThetaBob_101
- Track 60 : TChen_95
- Track 61 : LunaStella_95
- Track 62 : Cornie_95
- Track 63 : Toron_102
- Track 64 : Xula_69, Babsiella_73

- Track 65 : QueenHazel_68
- Track 66 : Island3_71, Brujita_69
- Track 67 : HC_73
- Track 68 : Che9c_80
- Track 69 : Sbash_85
- Track 70 : Shweta_64
- Track 71 : Bosection6_68, Journey_62, Phrann_65
- Track 72 : Chewbacca_72
- Track 73 : Gex_70, Aggie_65, Pipsqueaks_71, Carcharodon_69, Silvy_66, Xerxes_70
- Track 74 : MichelleMyBell_68
- Track 75 : Panchino_64
- Track 76 : ShrimpFriedEgg_68, Rebel_64, Purgamenstris_68, Raymond7_61
- Track 77 : Schnauzer_72, EGUicorn_68, Melville_75, Silvafighter_72, Phloss_68, Tapioca_68, Duplicity_68, Parmesanjohn_70, Andies_63, Magsby_69, Scitech_65, Smurph_70
- Track 78 : Kevin1_67
- Track 79 : Butters_64, Rubeelu_64
- Track 80 : Philonius_70
- Track 81 : BabeRuth_68, Nenae_68, Redi_67, Hanako_67
- Track 82 : Xeno_67, PhancyPhin_67
- Track 83 : SpongeBob_63, Jamie19_63
- Track 84 : Fulbright_68
- Track 85 : Snekmaggedon_62
- Track 86 : Charlie_66, SkinnyPete_66
- Track 87 : MadKillah_26, Ashwin_26, Zebo_23, Murai_25, Ryadel_27, Familton_25, Mori_25, Wildflower_25, NiebruSaylor_25, Idergollasper_24, Vorrrps_25, FoulBall_24, SchoolBus_24, Winget_25, YungJamal_27, Schuy_26, Smooch_28, Shida_25, JangDynasty_24, Alkhayr_23, Vagabond_25, TelAviv_22, Catdawg_24, Krili_25, Firecracker_25, Blessica_25
- Track 88 : Bora_23, Dylan_24, Zakhe101_25, Corndog_27
- Track 89 : MooMoo_92

Summary of Final Annotations (See graph section above for start numbers):

The start number called the most often in the published annotations is 58, it was called in 123 of the 299 non-draft genes in the pham.

Genes that call this "Most Annotated" start:

- Akhila_92, Alexphander_99, AlpineSix_96, ArcusAngelus_98, Ardmore_82, Batiatus_98, Beakin_90, BigPhil_95, Bipolar_100, Blexus_95, BobaPhett_100, Bobi_100, Brocalys_90, Brushbloom_104, Bubbles123_92, Burwell21_92, ByChance_89, Byougenkin_95, Cabrinians_95, CaptainTrips_100, Cerasum_97, Chevrolet_102, Chuckly_95, Clifton_90, Coco12_99, Crumble_93, DLane_98, DRBy19_98, DaWorst_98, Dante_96, DeadP_98, DillTech15_104, Donkeykong_104, DosHalletts_95, Eish_103, EleanorGeorge_102, Emma_103, Eradicator_90, Filuzino_98, Firehouse51_92, Flathead_100, FreddyB_108, Fruitloop_96, Gorge_97, Grimmer_106, Guppsters_93, Hamulus_98, Harley_100, Hegedechwinu_106, Hlubikazi_96, Ibhubesi_95, JalFarm20_107, James_102, Jarcob_101, Jinglebell_105, Kenuha5_90, Kersh_101, Kingsley_107, Koella_91, KristaRAM_106, LastJedi_89,

Latretium_101, LilMoolah_101, LittleShirley_106, Lizziana_99, Llama_105, Llij_93, Mandlovu_96, Maravista_95, Martik_97, Mattes_99, Melissauren88_88, MilanaBonita_91, MilleniumForce_98, MinionDave_96, Minnie_93, Modragons_102, Moonbeam_101, Mozy_102, Ms6_100, Nivrat_98, NormanBulbieJr_96, Ochi17_104, OfUltron_105, Oksu_102, OlympiaSaint_102, Ovechkin_101, OwlsT2W_96, Phalconet_99, Phanphagia_103, Phatniss_96, PhesterPhotato_102, Philus_102, Pippy_96, Plumbus_97, PopTart_89, Priscilla_99, Rialto_103, Saal_96, Sabbb_101, Sandalphon_98, Sarma624_100, SassyB_89, Seabastian_105, Seagreen_99, Shauna1_100, ShiLan_101, ShowerHandel_99, Sparkdehlily_105, Spoonbill_98, Squirty_97, StAnnes_102, Starcevich_100, Strokeseat_96, SuperGrey_98, SwagPiggett_100, TDanisky_106, Taj_104, Tootsieroll_92, Totinger_101, Velveteen_95, Vivum_100, Wachhund_95, Wee_101, Whatsapiecost_92, XFactor_89, Yorick_94, Zerg_96, Zizzle_101,

Genes that have the "Most Annotated" start but do not call it:

- Aubs_98, BlueCrab_101, BodEinwohner17_108, Boomer_100, BuzzLyseyear_105, Che8_105, Cornucopia_98, DaddyRickover_100, Daenerys_96, Deb65_91, DirtMcgirt_99, Doomphist_103, Dorothy_99, DotProduct_92, Doug_95, Drago_97, Empress_98, Enby_102, Estave1_106, Fancypants_105, Fastidio_102, GUmble_97, Galactic_102, Gandolph_98, Geralt_91, GigiOuiOui_93, Girr_97, Hades_95, IMpilo_96, IbOuu_94, Inventum_96, IrishSherpFalk_98, Job42_99, JoeyJr_101, Juice456_97, Karhdo_93, Kimberlium_100, KingMidas_98, Krakatau_91, Leozinho_95, Leperchaun_100, Lorde_101, LunaBlu_105, MadMen_103, Madiba_97, Mantra_96, Marker_104, MisterCuddles_98, Mova_100, MulchExplorer_102, MulchSalad_100, Nimbo_90, Nitzel_92, OldBen_95, PHappiness_98, PMC_97, Pacc40_96, Phasih_95, Poenanya_102, Polka14_102, Pollywog_100, QuickMath_99, Radiance_96, Ramsey_103, RedBird_99, RitaG_97, Rockne_101, RockyHorror_102, Ruby_95, SG4_99, Sassafras_100, Scottish_98, ShroomBoi_96, SiSi_94, SimranZ1_95, Spartacus_105, Spikelee_99, Stap_93, Tweety_99, UncleRicky_98, VRedHorse_99, Veteran_89, WillSterrel_96,

Genes that do not have the "Most Annotated" start:

- Aggie_65, Alkhayr_23, Aloeri_92, Andies_63, Ashwin_26, Awesomesauce_89, BabeRuth_68, Babsiella_73, Blessica_25, Bora_23, Bosection6_68, Brujita_69, Butters_64, Carcharodon_69, Catdawg_24, Charlie_66, Che9c_80, Chewbacca_72, ChickenDinner_92, Corndog_27, Cornie_95, DocMcStuffins_86, Duplicity_68, Dylan_24, EGUnicorn_68, Familton_25, Firecracker_25, Florinda_110, FoulBall_24, Frankie_98, Fulbright_68, Gex_70, Girafales_107, HC_73, Hanako_67, Idergollasper_24, Island3_71, Jamie19_63, JangDynasty_24, Journey_62, Juniper1_90, Kevin1_67, Krili_25, LunaStella_95, MadKillah_26, Magsby_69, Mahavrat_92, Melville_75, MichelleMyBell_68, Misha28_88, MooMoo_92, Mori_25, Murai_25, Nenae_68, NiebruSaylor_25, Ogopogo_102, Panchino_64, Parmesanjohn_70, PhancyPhin_67, Philonius_70, Phloss_68, Phrann_65, Piper2020_93, Pipsqueaks_71, Purgamenstris_68, QueenHazel_68, Quico_107, Raymond7_61, Rebel_64, Redi_67, Renaud18_108, Rita_98, Royals2015_102, Rubeelu_64, Ryadel_27, Sbash_85, Schnauzer_72, SchoolBus_24, Schuy_26, Scitech_65, Shida_25, ShrimpFriedEgg_68, Shweta_64, Silvafighter_72, Silvy_66, SkinnyPete_66, Smooch_28, Smurph_70, Snekmaggon_62, SpongeBob_63, TChen_95, Tapioca_68, TelAviv_22, ThetaBob_101, TootsiePop_88, Toron_102, Vagabond_25, Vorrps_25, Wildflower_25, Winget_25, Xeno_67, Xerxes_70, Xula_69, YungJamal_27, Zakhe101_25, Zebo_23,

Summary by start number:

Start 28:

- Found in 1 of 318 (0.3%) of genes in pham
- Manual Annotations of this start: 1 of 299
- Called 100.0% of time when present
- Phage (with cluster) where this start called: Rita_98 (F1),

Start 39:

- Found in 40 of 318 (12.6%) of genes in pham
- Manual Annotations of this start: 4 of 299
- Called 12.5% of time when present
- Phage (with cluster) where this start called: Bosection6_68 (N), Chewbacca_72 (N), Journey_62 (N), Phrann_65 (N), Shweta_64 (N),

Start 43:

- Found in 1 of 318 (0.3%) of genes in pham
- Manual Annotations of this start: 1 of 299
- Called 100.0% of time when present
- Phage (with cluster) where this start called: BuzzLyseyear_105 (F1),

Start 44:

- Found in 22 of 318 (6.9%) of genes in pham
- Manual Annotations of this start: 1 of 299
- Called 4.5% of time when present
- Phage (with cluster) where this start called: Snekmaggedon_62 (N),

Start 48:

- Found in 45 of 318 (14.2%) of genes in pham
- Manual Annotations of this start: 17 of 299
- Called 37.8% of time when present
- Phage (with cluster) where this start called: Aggie_65 (N), BabeRuth_68 (N), Butters_64 (N), Carcharodon_69 (N), Charlie_66 (N), Gex_70 (N), Hanako_67 (N), Kevin1_67 (N), MichelleMyBell_68 (N), Nенаe_68 (N), Philonius_70 (N), Pipsqueaks_71 (N), Redi_67 (N), Rubeelu_64 (N), Silvy_66 (N), SkinnyPete_66 (N), Xerxes_70 (N),

Start 50:

- Found in 1 of 318 (0.3%) of genes in pham
- Manual Annotations of this start: 1 of 299
- Called 100.0% of time when present
- Phage (with cluster) where this start called: MooMoo_92 (singleton),

Start 55:

- Found in 89 of 318 (28.0%) of genes in pham
- Manual Annotations of this start: 2 of 299
- Called 2.2% of time when present
- Phage (with cluster) where this start called: Boomer_100 (F1), Mova_100 (F1),

Start 57:

- Found in 6 of 318 (1.9%) of genes in pham
- Manual Annotations of this start: 1 of 299
- Called 16.7% of time when present
- Phage (with cluster) where this start called: TChen_95 (F4),

Start 58:

- Found in 212 of 318 (66.7%) of genes in pham
- Manual Annotations of this start: 123 of 299
- Called 60.8% of time when present
- Phage (with cluster) where this start called: Akhila_92 (F1), Alexphander_99 (F1), AlpineSix_96 (F1), ArcusAngelus_98 (F1), Ardmore_82 (F1), Batiatus_98 (F1), Beakin_90 (F1), BigPhil_95 (F1), Bipolar_100 (F1), Blexus_95 (F1), BobaPhett_100 (F1), Bobi_100 (F1), Brocalys_90 (F1), Brushbloom_104 (F1), Bubbles123_92 (F1), Burwell21_92 (F1), ByChance_89 (F1), Byougenkin_95 (F1), Cabrinians_95 (F1), CaptainTrips_100 (F1), Cerasum_97 (F1), Chevrolet_102 (F1), Chuckly_95 (F1), Clifton_90 (F1), Coco12_99 (F1), Crumble_93 (F1), DLane_98 (F1), DRBy19_98 (F1), DaWorst_98 (F1), Dante_96 (F1), DeadP_98 (F1), DillTech15_104 (F1), Donkeykong_104 (F1), DosHalletts_95 (F1), Eish_103 (F1), EleanorGeorge_102 (F1), Emma_103 (F1), Eradicator_90 (F1), Filuzino_98 (F1), Firehouse51_92 (F1), Flathead_100 (F1), FreddyB_108 (F1), Fruitloop_96 (F1), Gorge_97 (F1), Grimmer_106 (F1), Guppsters_93 (F1), Hamulus_98 (F1), Harley_100 (F1), Hegedechwinu_106 (F1), Hlubikazi_96 (F1), Ibhubesi_95 (F1), JalFarm20_107 (F1), James_102 (F1), Jacob_101 (F1), Jinglebell_105 (F1), Kenuha5_90 (F1), Kersh_101 (F1), Kingsley_107 (F1), Koella_91 (F1), KristaRAM_106 (F1), LastJedi_89 (F1), Latretium_101 (F1), LilMoolah_101 (F1), LittleShirley_106 (F1), Lizziana_99 (F1), Llama_105 (F1), Llij_93 (F1), Mandlovu_96 (F1), Maravista_95 (F1), Martik_97 (F1), Mattes_99 (F1), Melissauren88_88 (F1), MilanaBonita_91 (F1), MilleniumForce_98 (F1), MinionDave_96 (F1), Minnie_93 (F1), Modragons_102 (F1), Moonbeam_101 (F1), Mozy_102 (F1), Ms6_100 (F1), Nivrat_98 (F1), NormanBulbieJr_96 (F1), Ochi17_104 (F1), OfUltron_105 (F1), Oksu_102 (F1), OlympiaSaint_102 (F1), Ovechkin_101 (F1), OwlsT2W_96 (F1), Phalconet_99 (F1), Phanphagia_103 (F1), Phatniss_96 (F1), PhesterPhotato_102 (F1), Philus_102 (F1), Pippy_96 (F1), Plumbus_97 (F1), PopTart_89 (F1), Priscilla_99 (F1), Rialto_103 (F1), Saal_96 (F1), Sabbb_101 (F1), Sandalphon_98 (F1), Sarma624_100 (F1), SassyB_89 (F1), Seabastian_105 (F1), Seagreen_99 (F1), Shauna1_100 (F1), ShiLan_101 (F1), ShowerHandel_99 (F1), Sparkdehlily_105 (F1), Spoonbill_98 (F1), Squirty_97 (F3), StAnnes_102 (F1), Starceвич_100 (F1), Strokeseat_96 (F1), SuperGrey_98 (F1), SwagPiggett_100 (F1), TDanisky_106 (F1), Taj_104 (F1), Tootsieroll_92 (F1), Totinger_101 (F1), Velveteen_95 (F1), Vivum_100 (F1), Wachhund_95 (F1), Wee_101 (F1), Whatsapiecost_92 (F1), XFactor_89 (F1), Yorick_94 (F1), Zerg_96 (F1), Zizzle_101 (F1),

Start 59:

- Found in 9 of 318 (2.8%) of genes in pham
- Manual Annotations of this start: 8 of 299
- Called 88.9% of time when present
- Phage (with cluster) where this start called: Babsiella_73 (I1), Brujita_69 (I1), Che9c_80 (I2), HC_73 (I1), Island3_71 (I1), QueenHazel_68 (I1), Sbash_85 (I2), Xula_69 (I1),

Start 60:

- Found in 30 of 318 (9.4%) of genes in pham
- Manual Annotations of this start: 28 of 299
- Called 100.0% of time when present
- Phage (with cluster) where this start called: Alkhayr_23 (O), Ashwin_26 (O), Blessica_25 (O), Bora_23 (O), Catdawg_24 (O), Corndog_27 (O), Dylan_24 (O), Familton_25 (O), Firecracker_25 (O), FoulBall_24 (O), Idergollasper_24 (O),

JangDynasty_24 (O), Krili_25 (O), MadKillah_26 (O), Mori_25 (O), Murai_25 (O), NiebruSaylor_25 (O), Ryadel_27 (O), SchoolBus_24 (O), Schuy_26 (O), Shida_25 (O), Smooch_28 (O), TelAviv_22 (O), Vagabond_25 (O), Vorrps_25 (O), Wildflower_25 (O), Winget_25 (O), YungJamal_27 (O), Zakhe101_25 (O), Zebo_23 (O),

Start 61:

- Found in 54 of 318 (17.0%) of genes in pham
- Manual Annotations of this start: 26 of 299
- Called 53.7% of time when present
- Phage (with cluster) where this start called: Andies_63 (N), Cornie_95 (F5), Duplicity_68 (N), EGUnicorn_68 (N), Jamie19_63 (N), Juniper1_90 (F1), LunaStella_95 (F4), Magsby_69 (N), Mahavrat_92 (F1), Melville_75 (N), Ogopogo_102 (F1), Panchino_64 (N), Parmesanjohn_70 (N), PhancyPhin_67 (N), Phloss_68 (N), Purgamenstris_68 (N), Raymond7_61 (N), Rebel_64 (N), Renaud18_108 (F4), Schnauzer_72 (N), Scitech_65 (N), ShrimpFriedEgg_68 (N), Silvafighter_72 (N), Smurph_70 (N), SpongeBob_63 (N), Tapioca_68 (N), ThetaBob_101 (F4), Toron_102 (F6), Xeno_67 (N),

Start 62:

- Found in 97 of 318 (30.5%) of genes in pham
- Manual Annotations of this start: 85 of 299
- Called 94.8% of time when present
- Phage (with cluster) where this start called: Aloeri_92 (F1), Aubs_98 (F1), Awesomesauce_89 (F1), BlueCrab_101 (F1), BodEinwohner17_108 (F1), Che8_105 (F1), ChickenDinner_92 (F1), Cornucopia_98 (F1), DaddyRickover_100 (F1), Daenerys_96 (F1), Deb65_91 (F1), DirtMcgirt_99 (F1), DocMcStuffins_86 (F1), Doomphist_103 (F1), Dorothy_99 (F1), DotProduct_92 (F1), Doug_95 (F1), Drago_97 (F1), Empress_98 (F1), Enby_102 (F1), Estave1_106 (F1), Fancypants_105 (F1), Fastidio_102 (F1), Florinda_110 (F1), Frankie_98 (F1), GUmby_97 (F1), Galactic_102 (F1), Gandolph_98 (F1), Geralt_91 (F1), GigiOuiOui_93 (F1), Girafales_107 (F1), Girr_97 (F1), Hades_95 (F1), IMpilo_96 (F1), IbOuu_94 (F1), Inventum_96 (F1), IrishSherpFalk_98 (F1), Job42_99 (F1), JoeyJr_101 (F1), Juice456_97 (F1), Karhdo_93 (F1), Kimberlium_100 (F1), KingMidas_98 (F1), Krakatau_91 (F1), Leozinho_95 (F1), Leperchaun_100 (F1), Lorde_101 (F1), LunaBlu_105 (F1), MadMen_103 (F1), Madiba_97 (F1), Mantra_96 (F1), Marker_104 (F1), Misha28_88 (F1), MisterCuddles_98 (F1), MulchExplorer_102 (F1), MulchSalad_100 (F), Nimbo_90 (F1), Nitzel_92 (F1), OldBen_95 (F1), PHappiness_98 (F1), PMC_97 (F1), Pacc40_96 (F1), Phasih_95 (F1), Piper2020_93 (F1), Poenanya_102 (F1), Polka14_102 (F1), Pollywog_100 (F1), QuickMath_99 (F1), Quico_107 (F1), Radiance_96 (F1), Ramsey_103 (F1), RedBird_99 (F1), RitaG_97 (F1), Rockne_101 (F1), RockyHorror_102 (F1), Royals2015_102 (F1), Ruby_95 (F1), SG4_99 (F1), Sassafras_100 (F1), Scottish_98 (F1), ShroomBoi_96 (F1), SiSi_94 (F1), SimranZ1_95 (F1), Spartacus_105 (F1), Spikelee_99 (F1), Stap_93 (F1), TootsiePop_88 (F1), Tweety_99 (F1), UncleRicky_98 (F1), VRedHorse_99 (F1), Veteran_89 (F1), WillSterrel_96 (F1),

Start 71:

- Found in 24 of 318 (7.5%) of genes in pham
- Manual Annotations of this start: 1 of 299
- Called 4.2% of time when present
- Phage (with cluster) where this start called: Fulbright_68 (N),

Summary by clusters:

There are 11 clusters represented in this pham: F1, singleton, F3, F4, F5, F6, F, I1, I2, O, N,

Info for manual annotations of cluster F1:

- Start number 28 was manually annotated 1 time for cluster F1.
- Start number 43 was manually annotated 1 time for cluster F1.
- Start number 55 was manually annotated 2 times for cluster F1.
- Start number 58 was manually annotated 122 times for cluster F1.
- Start number 61 was manually annotated 3 times for cluster F1.
- Start number 62 was manually annotated 85 times for cluster F1.

Info for manual annotations of cluster F3:

- Start number 58 was manually annotated 1 time for cluster F3.

Info for manual annotations of cluster F4:

- Start number 57 was manually annotated 1 time for cluster F4.
- Start number 61 was manually annotated 3 times for cluster F4.

Info for manual annotations of cluster F5:

- Start number 61 was manually annotated 1 time for cluster F5.

Info for manual annotations of cluster I1:

- Start number 59 was manually annotated 6 times for cluster I1.

Info for manual annotations of cluster I2:

- Start number 59 was manually annotated 2 times for cluster I2.

Info for manual annotations of cluster N:

- Start number 39 was manually annotated 4 times for cluster N.
- Start number 44 was manually annotated 1 time for cluster N.
- Start number 48 was manually annotated 17 times for cluster N.
- Start number 61 was manually annotated 19 times for cluster N.
- Start number 71 was manually annotated 1 time for cluster N.

Info for manual annotations of cluster O:

- Start number 60 was manually annotated 28 times for cluster O.

Gene Information:

Gene: Aggie_65 Start: 43172, Stop: 43627, Start Num: 48

Candidate Starts for Aggie_65:

(Start: 39 @43076 has 4 MA's), (Start: 48 @43172 has 17 MA's), (Start: 61 @43229 has 26 MA's), (Start: 71 @43322 has 1 MA's), (75, 43346), (103, 43583),

Gene: Akhila_92 Start: 52219, Stop: 52632, Start Num: 58

Candidate Starts for Akhila_92:

(42, 52126), (47, 52174), (Start: 58 @52219 has 123 MA's), (86, 52447), (98, 52552), (110, 52609),

Gene: Alexphander_99 Start: 54553, Stop: 54966, Start Num: 58

Candidate Starts for Alexphander_99:

(42, 54460), (47, 54508), (Start: 58 @54553 has 123 MA's), (86, 54781), (110, 54943),

Gene: Alkhayr_23 Start: 11416, Stop: 11850, Start Num: 60

Candidate Starts for Alkhayr_23:

(Start: 60 @11416 has 28 MA's), (66, 11470), (69, 11506), (70, 11509), (72, 11518), (75, 11536), (76, 11548), (77, 11557), (78, 11560), (93, 11701), (101, 11743), (103, 11770), (104, 11773),

Gene: Aloeri_92 Start: 53366, Stop: 53770, Start Num: 62

Candidate Starts for Aloeri_92:

(27, 53168), (33, 53183), (Start: 62 @53366 has 85 MA's),

Gene: AlpineSix_96 Start: 52937, Stop: 53350, Start Num: 58

Candidate Starts for AlpineSix_96:

(Start: 58 @52937 has 123 MA's), (86, 53165), (110, 53327),

Gene: Andies_63 Start: 42675, Stop: 43073, Start Num: 61

Candidate Starts for Andies_63:

(Start: 39 @42522 has 4 MA's), (Start: 48 @42618 has 17 MA's), (Start: 61 @42675 has 26 MA's), (Start: 71 @42768 has 1 MA's), (75, 42792), (103, 43029),

Gene: ArcusAngelus_98 Start: 54470, Stop: 54883, Start Num: 58

Candidate Starts for ArcusAngelus_98:

(Start: 58 @54470 has 123 MA's), (86, 54698), (110, 54860),

Gene: Ardmore_82 Start: 48108, Stop: 48521, Start Num: 58

Candidate Starts for Ardmore_82:

(42, 48015), (47, 48063), (Start: 58 @48108 has 123 MA's), (86, 48336), (98, 48441), (110, 48498),

Gene: Ashwin_26 Start: 11636, Stop: 12070, Start Num: 60

Candidate Starts for Ashwin_26:

(Start: 60 @11636 has 28 MA's), (66, 11690), (69, 11726), (70, 11729), (72, 11738), (75, 11756), (76, 11768), (77, 11777), (78, 11780), (93, 11921), (101, 11963), (103, 11990), (104, 11993),

Gene: Aubs_98 Start: 55122, Stop: 55523, Start Num: 62

Candidate Starts for Aubs_98:

(6, 54711), (20, 54858), (41, 55020), (45, 55056), (Start: 55 @55107 has 2 MA's), (Start: 58 @55110 has 123 MA's), (Start: 62 @55122 has 85 MA's), (86, 55338), (100, 55446), (110, 55500),

Gene: Awesomesauce_89 Start: 53602, Stop: 54006, Start Num: 62

Candidate Starts for Awesomesauce_89:

(27, 53404), (33, 53419), (Start: 62 @53602 has 85 MA's),

Gene: BabeRuth_68 Start: 41426, Stop: 41881, Start Num: 48

Candidate Starts for BabeRuth_68:

(Start: 39 @41330 has 4 MA's), (Start: 44 @41411 has 1 MA's), (Start: 48 @41426 has 17 MA's), (Start: 61 @41483 has 26 MA's), (66, 41534), (75, 41600), (82, 41663), (103, 41837),

Gene: Babsiella_73 Start: 45112, Stop: 45540, Start Num: 59

Candidate Starts for Babsiella_73:

(Start: 59 @45112 has 8 MA's), (66, 45157), (76, 45232), (77, 45244), (93, 45409), (110, 45496),

Gene: Batiatus_98 Start: 53658, Stop: 54071, Start Num: 58
Candidate Starts for Batiatus_98:
(Start: 58 @53658 has 123 MA's), (86, 53886), (98, 53991), (110, 54048),

Gene: Beakin_90 Start: 50631, Stop: 51044, Start Num: 58
Candidate Starts for Beakin_90:
(42, 50538), (47, 50586), (Start: 58 @50631 has 123 MA's), (86, 50859), (98, 50964), (110, 51021),

Gene: BigPhil_95 Start: 50450, Stop: 50863, Start Num: 58
Candidate Starts for BigPhil_95:
(Start: 58 @50450 has 123 MA's), (86, 50678), (98, 50783), (110, 50840),

Gene: Bipolar_100 Start: 55427, Stop: 55840, Start Num: 58
Candidate Starts for Bipolar_100:
(Start: 58 @55427 has 123 MA's), (86, 55655), (98, 55760), (110, 55817),

Gene: Blessica_25 Start: 11439, Stop: 11873, Start Num: 60
Candidate Starts for Blessica_25:
(Start: 60 @11439 has 28 MA's), (66, 11493), (69, 11529), (70, 11532), (72, 11541), (75, 11559), (76, 11571), (77, 11580), (78, 11583), (93, 11724), (101, 11766), (103, 11793), (104, 11796),

Gene: Blexus_95 Start: 54034, Stop: 54447, Start Num: 58
Candidate Starts for Blexus_95:
(Start: 58 @54034 has 123 MA's), (86, 54262), (98, 54367), (110, 54424),

Gene: BlueCrab_101 Start: 55042, Stop: 55443, Start Num: 62
Candidate Starts for BlueCrab_101:
(41, 54937), (45, 54976), (Start: 55 @55027 has 2 MA's), (Start: 58 @55030 has 123 MA's), (Start: 62 @55042 has 85 MA's), (86, 55258), (110, 55420),

Gene: BobaPhett_100 Start: 55716, Stop: 56129, Start Num: 58
Candidate Starts for BobaPhett_100:
(Start: 58 @55716 has 123 MA's), (86, 55944), (98, 56049), (110, 56106),

Gene: Bobi_100 Start: 55132, Stop: 55545, Start Num: 58
Candidate Starts for Bobi_100:
(24, 54937), (47, 55087), (Start: 58 @55132 has 123 MA's), (86, 55360), (98, 55465), (110, 55522),

Gene: BodEinwohner17_108 Start: 56098, Stop: 56499, Start Num: 62
Candidate Starts for BodEinwohner17_108:
(45, 56032), (Start: 55 @56083 has 2 MA's), (Start: 58 @56086 has 123 MA's), (Start: 62 @56098 has 85 MA's), (86, 56314), (110, 56476),

Gene: Boomer_100 Start: 54380, Stop: 54796, Start Num: 55
Candidate Starts for Boomer_100:
(6, 53981), (20, 54128), (41, 54290), (45, 54329), (Start: 55 @54380 has 2 MA's), (Start: 58 @54383 has 123 MA's), (Start: 62 @54395 has 85 MA's), (86, 54611), (100, 54719),

Gene: Bora_23 Start: 11089, Stop: 11523, Start Num: 60
Candidate Starts for Bora_23:
(Start: 60 @11089 has 28 MA's), (66, 11143), (69, 11179), (70, 11182), (72, 11191), (75, 11209), (76, 11221), (77, 11230), (78, 11233), (93, 11374), (101, 11416), (104, 11446),

Gene: Bosection6_68 Start: 42146, Stop: 42697, Start Num: 39

Candidate Starts for Bosection6_68:

(Start: 39 @42146 has 4 MA's), (Start: 44 @42227 has 1 MA's), (Start: 48 @42242 has 17 MA's), (49, 42248), (Start: 61 @42299 has 26 MA's), (75, 42416), (82, 42479), (103, 42653),

Gene: Brocalys_90 Start: 51195, Stop: 51608, Start Num: 58

Candidate Starts for Brocalys_90:

(Start: 58 @51195 has 123 MA's), (86, 51423), (98, 51528), (110, 51585),

Gene: Brujita_69 Start: 44086, Stop: 44514, Start Num: 59

Candidate Starts for Brujita_69:

(Start: 59 @44086 has 8 MA's), (66, 44131), (72, 44176), (76, 44206), (77, 44218), (93, 44383), (110, 44470),

Gene: Brushbloom_104 Start: 54702, Stop: 55115, Start Num: 58

Candidate Starts for Brushbloom_104:

(Start: 58 @54702 has 123 MA's), (86, 54930), (98, 55035), (110, 55092),

Gene: Bubbles123_92 Start: 53470, Stop: 53883, Start Num: 58

Candidate Starts for Bubbles123_92:

(Start: 58 @53470 has 123 MA's), (86, 53698), (98, 53803), (110, 53860),

Gene: Burwell21_92 Start: 53481, Stop: 53894, Start Num: 58

Candidate Starts for Burwell21_92:

(Start: 58 @53481 has 123 MA's), (86, 53709), (98, 53814), (110, 53871),

Gene: Butters_64 Start: 40322, Stop: 40789, Start Num: 48

Candidate Starts for Butters_64:

(Start: 39 @40226 has 4 MA's), (47, 40319), (Start: 48 @40322 has 17 MA's), (Start: 61 @40379 has 26 MA's), (Start: 71 @40472 has 1 MA's), (75, 40496), (82, 40559),

Gene: BuzzLyseyear_105 Start: 56154, Stop: 56654, Start Num: 43

Candidate Starts for BuzzLyseyear_105:

(30, 56073), (32, 56076), (Start: 43 @56154 has 1 MA's), (56, 56238), (Start: 58 @56241 has 123 MA's), (Start: 62 @56253 has 85 MA's), (86, 56469), (110, 56631),

Gene: ByChance_89 Start: 49553, Stop: 49966, Start Num: 58

Candidate Starts for ByChance_89:

(Start: 58 @49553 has 123 MA's), (86, 49781), (110, 49943),

Gene: Byougenkin_95 Start: 50517, Stop: 50930, Start Num: 58

Candidate Starts for Byougenkin_95:

(Start: 58 @50517 has 123 MA's), (86, 50745), (110, 50907),

Gene: Cabrinians_95 Start: 53116, Stop: 53529, Start Num: 58

Candidate Starts for Cabrinians_95:

(Start: 58 @53116 has 123 MA's), (86, 53344), (98, 53449), (110, 53506),

Gene: CaptainTrips_100 Start: 53296, Stop: 53709, Start Num: 58

Candidate Starts for CaptainTrips_100:

(42, 53203), (47, 53251), (Start: 58 @53296 has 123 MA's), (86, 53524), (98, 53629), (110, 53686),

Gene: Carcharodon_69 Start: 42519, Stop: 42974, Start Num: 48
Candidate Starts for Carcharodon_69:
(Start: 39 @42423 has 4 MA's), (Start: 48 @42519 has 17 MA's), (Start: 61 @42576 has 26 MA's),
(Start: 71 @42669 has 1 MA's), (75, 42693), (103, 42930),

Gene: Catdawg_24 Start: 11045, Stop: 11479, Start Num: 60
Candidate Starts for Catdawg_24:
(Start: 60 @11045 has 28 MA's), (66, 11099), (69, 11135), (70, 11138), (72, 11147), (75, 11165), (76,
11177), (77, 11186), (78, 11189), (93, 11330), (101, 11372), (103, 11399), (104, 11402),

Gene: Cerasum_97 Start: 50468, Stop: 50881, Start Num: 58
Candidate Starts for Cerasum_97:
(Start: 58 @50468 has 123 MA's), (86, 50696), (98, 50801), (110, 50858),

Gene: Charlie_66 Start: 41866, Stop: 42321, Start Num: 48
Candidate Starts for Charlie_66:
(Start: 39 @41770 has 4 MA's), (Start: 44 @41851 has 1 MA's), (Start: 48 @41866 has 17 MA's), (49,
41872), (Start: 61 @41923 has 26 MA's), (75, 42040), (82, 42103), (103, 42277),

Gene: Che8_105 Start: 55307, Stop: 55708, Start Num: 62
Candidate Starts for Che8_105:
(Start: 55 @55292 has 2 MA's), (Start: 58 @55295 has 123 MA's), (Start: 62 @55307 has 85 MA's),
(86, 55523), (110, 55685),

Gene: Che9c_80 Start: 53858, Stop: 54301, Start Num: 59
Candidate Starts for Che9c_80:
(Start: 59 @53858 has 8 MA's), (66, 53909), (72, 53954), (76, 53984), (77, 53996), (91, 54137), (93,
54161), (94, 54170), (96, 54179),

Gene: Chevrolet_102 Start: 54471, Stop: 54884, Start Num: 58
Candidate Starts for Chevrolet_102:
(Start: 58 @54471 has 123 MA's), (86, 54699), (110, 54861),

Gene: Chewbacca_72 Start: 42318, Stop: 42869, Start Num: 39
Candidate Starts for Chewbacca_72:
(Start: 39 @42318 has 4 MA's), (Start: 48 @42414 has 17 MA's), (Start: 61 @42471 has 26 MA's),
(Start: 71 @42564 has 1 MA's), (75, 42588), (103, 42825),

Gene: ChickenDinner_92 Start: 53366, Stop: 53770, Start Num: 62
Candidate Starts for ChickenDinner_92:
(27, 53168), (33, 53183), (Start: 62 @53366 has 85 MA's),

Gene: Chuckly_95 Start: 50338, Stop: 50751, Start Num: 58
Candidate Starts for Chuckly_95:
(Start: 58 @50338 has 123 MA's), (86, 50566), (98, 50671), (110, 50728),

Gene: Clifton_90 Start: 52170, Stop: 52583, Start Num: 58
Candidate Starts for Clifton_90:
(Start: 58 @52170 has 123 MA's), (86, 52398), (98, 52503), (110, 52560),

Gene: Coco12_99 Start: 54525, Stop: 54938, Start Num: 58
Candidate Starts for Coco12_99:
(Start: 58 @54525 has 123 MA's), (86, 54753), (98, 54858), (110, 54915),

Gene: Corndog_27 Start: 11715, Stop: 12149, Start Num: 60

Candidate Starts for Corndog_27:

(Start: 60 @11715 has 28 MA's), (66, 11769), (69, 11805), (70, 11808), (72, 11817), (75, 11835), (76, 11847), (77, 11856), (78, 11859), (93, 12000), (101, 12042), (104, 12072),

Gene: Cornie_95 Start: 52934, Stop: 53362, Start Num: 61

Candidate Starts for Cornie_95:

(5, 52520), (12, 52586), (15, 52616), (18, 52667), (45, 52868), (Start: 55 @52919 has 2 MA's), (Start: 57 @52922 has 1 MA's), (Start: 61 @52934 has 26 MA's), (64, 52955), (66, 52985), (67, 53003), (74, 53042), (75, 53051), (78, 53078), (80, 53096), (81, 53111), (82, 53114), (83, 53120), (84, 53123), (88, 53159), (90, 53174), (95, 53234), (102, 53261), (103, 53285), (104, 53288), (105, 53291), (113, 53351),

Gene: Cornucopia_98 Start: 51608, Stop: 52009, Start Num: 62

Candidate Starts for Cornucopia_98:

(6, 51260), (20, 51407), (45, 51542), (Start: 55 @51593 has 2 MA's), (Start: 58 @51596 has 123 MA's), (Start: 62 @51608 has 85 MA's), (86, 51824), (110, 51986),

Gene: Crumble_93 Start: 49840, Stop: 50277, Start Num: 58

Candidate Starts for Crumble_93:

(Start: 58 @49840 has 123 MA's), (86, 50068), (98, 50173), (110, 50230), (112, 50254),

Gene: DLane_98 Start: 54578, Stop: 54988, Start Num: 58

Candidate Starts for DLane_98:

(42, 54485), (47, 54533), (Start: 58 @54578 has 123 MA's), (86, 54806), (98, 54911), (110, 54968),

Gene: DRBy19_98 Start: 54797, Stop: 55210, Start Num: 58

Candidate Starts for DRBy19_98:

(Start: 58 @54797 has 123 MA's), (86, 55025),

Gene: DaWorst_98 Start: 53412, Stop: 53825, Start Num: 58

Candidate Starts for DaWorst_98:

(45, 53358), (Start: 55 @53409 has 2 MA's), (Start: 58 @53412 has 123 MA's), (Start: 62 @53424 has 85 MA's), (86, 53640), (98, 53745),

Gene: DaddyRickover_100 Start: 54292, Stop: 54693, Start Num: 62

Candidate Starts for DaddyRickover_100:

(45, 54226), (Start: 55 @54277 has 2 MA's), (Start: 58 @54280 has 123 MA's), (Start: 62 @54292 has 85 MA's), (86, 54508), (110, 54670),

Gene: Daenerys_96 Start: 54459, Stop: 54860, Start Num: 62

Candidate Starts for Daenerys_96:

(45, 54393), (Start: 55 @54444 has 2 MA's), (Start: 58 @54447 has 123 MA's), (Start: 62 @54459 has 85 MA's), (86, 54675), (110, 54837),

Gene: Dante_96 Start: 54928, Stop: 55341, Start Num: 58

Candidate Starts for Dante_96:

(42, 54835), (47, 54883), (Start: 58 @54928 has 123 MA's), (86, 55156), (98, 55261), (110, 55318),

Gene: DeadP_98 Start: 52156, Stop: 52569, Start Num: 58

Candidate Starts for DeadP_98:

(Start: 58 @52156 has 123 MA's), (86, 52384), (98, 52489), (110, 52546),

Gene: Deb65_91 Start: 52183, Stop: 52584, Start Num: 62

Candidate Starts for Deb65_91:

(45, 52117), (Start: 55 @52168 has 2 MA's), (Start: 58 @52171 has 123 MA's), (Start: 62 @52183 has 85 MA's), (86, 52399), (110, 52561),

Gene: DillTech15_104 Start: 53753, Stop: 54166, Start Num: 58

Candidate Starts for DillTech15_104:

(Start: 58 @53753 has 123 MA's), (86, 53981),

Gene: DirtMcgirt_99 Start: 51005, Stop: 51406, Start Num: 62

Candidate Starts for DirtMcgirt_99:

(6, 50591), (20, 50738), (41, 50900), (45, 50939), (Start: 55 @50990 has 2 MA's), (Start: 58 @50993 has 123 MA's), (Start: 62 @51005 has 85 MA's), (86, 51221), (100, 51329),

Gene: DocMcStuffins_86 Start: 54996, Stop: 55400, Start Num: 62

Candidate Starts for DocMcStuffins_86:

(27, 54798), (33, 54813), (Start: 62 @54996 has 85 MA's),

Gene: Donkeykong_104 Start: 55913, Stop: 56326, Start Num: 58

Candidate Starts for Donkeykong_104:

(42, 55820), (47, 55868), (Start: 58 @55913 has 123 MA's), (86, 56141), (110, 56303),

Gene: Doomphist_103 Start: 55112, Stop: 55513, Start Num: 62

Candidate Starts for Doomphist_103:

(45, 55046), (Start: 55 @55097 has 2 MA's), (Start: 58 @55100 has 123 MA's), (Start: 62 @55112 has 85 MA's), (86, 55328), (110, 55490),

Gene: Dorothy_99 Start: 55281, Stop: 55682, Start Num: 62

Candidate Starts for Dorothy_99:

(45, 55215), (Start: 55 @55266 has 2 MA's), (Start: 58 @55269 has 123 MA's), (Start: 62 @55281 has 85 MA's), (86, 55497), (110, 55659),

Gene: DosHalletts_95 Start: 53918, Stop: 54331, Start Num: 58

Candidate Starts for DosHalletts_95:

(42, 53825), (47, 53873), (Start: 58 @53918 has 123 MA's), (86, 54146), (98, 54251), (110, 54308),

Gene: DotProduct_92 Start: 51297, Stop: 51698, Start Num: 62

Candidate Starts for DotProduct_92:

(45, 51231), (Start: 55 @51282 has 2 MA's), (Start: 58 @51285 has 123 MA's), (Start: 62 @51297 has 85 MA's), (86, 51513), (98, 51618), (110, 51675),

Gene: Doug_95 Start: 54844, Stop: 55245, Start Num: 62

Candidate Starts for Doug_95:

(41, 54739), (Start: 55 @54829 has 2 MA's), (Start: 58 @54832 has 123 MA's), (Start: 62 @54844 has 85 MA's), (79, 54994), (86, 55060), (110, 55222),

Gene: Drago_97 Start: 51008, Stop: 51409, Start Num: 62

Candidate Starts for Drago_97:

(6, 50594), (20, 50741), (41, 50903), (45, 50942), (Start: 55 @50993 has 2 MA's), (Start: 58 @50996 has 123 MA's), (Start: 62 @51008 has 85 MA's), (86, 51224), (100, 51332),

Gene: Duplicity_68 Start: 41833, Stop: 42231, Start Num: 61

Candidate Starts for Duplicity_68:

(Start: 39 @41680 has 4 MA's), (Start: 48 @41776 has 17 MA's), (Start: 61 @41833 has 26 MA's),
(Start: 71 @41926 has 1 MA's), (75, 41950), (103, 42187),

Gene: Dylan_24 Start: 11441, Stop: 11875, Start Num: 60

Candidate Starts for Dylan_24:

(Start: 60 @11441 has 28 MA's), (66, 11495), (69, 11531), (70, 11534), (72, 11543), (75, 11561), (76,
11573), (77, 11582), (78, 11585), (93, 11726), (101, 11768), (104, 11798),

Gene: EGUunicorn_68 Start: 40899, Stop: 41297, Start Num: 61

Candidate Starts for EGUunicorn_68:

(Start: 39 @40746 has 4 MA's), (Start: 48 @40842 has 17 MA's), (Start: 61 @40899 has 26 MA's),
(Start: 71 @40992 has 1 MA's), (75, 41016), (103, 41253),

Gene: Eish_103 Start: 54594, Stop: 55007, Start Num: 58

Candidate Starts for Eish_103:

(Start: 58 @54594 has 123 MA's), (86, 54822), (98, 54927), (110, 54984),

Gene: EleanorGeorge_102 Start: 55861, Stop: 56274, Start Num: 58

Candidate Starts for EleanorGeorge_102:

(42, 55768), (47, 55816), (Start: 58 @55861 has 123 MA's), (86, 56089), (110, 56251),

Gene: Emma_103 Start: 52862, Stop: 53275, Start Num: 58

Candidate Starts for Emma_103:

(Start: 58 @52862 has 123 MA's), (86, 53090), (98, 53195), (110, 53252),

Gene: Empress_98 Start: 53375, Stop: 53776, Start Num: 62

Candidate Starts for Empress_98:

(45, 53309), (Start: 55 @53360 has 2 MA's), (Start: 58 @53363 has 123 MA's), (Start: 62 @53375 has
85 MA's), (86, 53591), (110, 53753),

Gene: Enby_102 Start: 51284, Stop: 51685, Start Num: 62

Candidate Starts for Enby_102:

(6, 50870), (20, 51017), (41, 51179), (45, 51218), (Start: 55 @51269 has 2 MA's), (Start: 58 @51272
has 123 MA's), (Start: 62 @51284 has 85 MA's), (86, 51500), (100, 51608),

Gene: Eradicator_90 Start: 52133, Stop: 52546, Start Num: 58

Candidate Starts for Eradicator_90:

(Start: 58 @52133 has 123 MA's), (86, 52361), (110, 52523),

Gene: Estave1_106 Start: 57168, Stop: 57569, Start Num: 62

Candidate Starts for Estave1_106:

(6, 56754), (16, 56844), (17, 56850), (20, 56901), (45, 57102), (Start: 55 @57153 has 2 MA's), (Start:
58 @57156 has 123 MA's), (Start: 62 @57168 has 85 MA's), (86, 57384), (110, 57546),

Gene: Familton_25 Start: 11046, Stop: 11480, Start Num: 60

Candidate Starts for Familton_25:

(Start: 60 @11046 has 28 MA's), (66, 11100), (69, 11136), (70, 11139), (72, 11148), (75, 11166), (76,
11178), (77, 11187), (78, 11190), (93, 11331), (101, 11373), (103, 11400), (104, 11403),

Gene: Fancypants_105 Start: 56674, Stop: 57075, Start Num: 62

Candidate Starts for Fancypants_105:

(41, 56569), (45, 56608), (Start: 55 @56659 has 2 MA's), (Start: 58 @56662 has 123 MA's), (Start: 62 @56674 has 85 MA's), (79, 56824), (86, 56890), (110, 57052),

Gene: Fastidio_102 Start: 51689, Stop: 52090, Start Num: 62

Candidate Starts for Fastidio_102:

(45, 51623), (Start: 55 @51674 has 2 MA's), (Start: 58 @51677 has 123 MA's), (Start: 62 @51689 has 85 MA's), (86, 51905), (98, 52010), (110, 52067),

Gene: Filuzino_98 Start: 55273, Stop: 55686, Start Num: 58

Candidate Starts for Filuzino_98:

(42, 55180), (47, 55228), (Start: 58 @55273 has 123 MA's), (86, 55501), (98, 55606), (110, 55663),

Gene: Firecracker_25 Start: 11339, Stop: 11773, Start Num: 60

Candidate Starts for Firecracker_25:

(Start: 60 @11339 has 28 MA's), (66, 11393), (69, 11429), (70, 11432), (72, 11441), (75, 11459), (76, 11471), (77, 11480), (78, 11483), (93, 11624), (101, 11666), (103, 11693), (104, 11696),

Gene: Firehouse51_92 Start: 54090, Stop: 54503, Start Num: 58

Candidate Starts for Firehouse51_92:

(42, 53997), (47, 54045), (Start: 58 @54090 has 123 MA's), (86, 54318), (98, 54423), (110, 54480),

Gene: Flathead_100 Start: 53594, Stop: 54007, Start Num: 58

Candidate Starts for Flathead_100:

(42, 53501), (47, 53549), (Start: 58 @53594 has 123 MA's), (86, 53822), (98, 53927), (110, 53984),

Gene: Florinda_110 Start: 55688, Stop: 56092, Start Num: 62

Candidate Starts for Florinda_110:

(Start: 62 @55688 has 85 MA's), (73, 55784), (75, 55799), (80, 55865), (86, 55907), (88, 55928), (98, 56012),

Gene: FoulBall_24 Start: 11046, Stop: 11480, Start Num: 60

Candidate Starts for FoulBall_24:

(Start: 60 @11046 has 28 MA's), (66, 11100), (69, 11136), (70, 11139), (72, 11148), (75, 11166), (76, 11178), (77, 11187), (78, 11190), (93, 11331), (101, 11373), (103, 11400), (104, 11403),

Gene: Frankie_98 Start: 53511, Stop: 53915, Start Num: 62

Candidate Starts for Frankie_98:

(36, 53346), (37, 53349), (38, 53355), (Start: 62 @53511 has 85 MA's), (73, 53607), (75, 53622), (80, 53688), (86, 53730), (88, 53751),

Gene: FreddyB_108 Start: 54762, Stop: 55175, Start Num: 58

Candidate Starts for FreddyB_108:

(Start: 58 @54762 has 123 MA's), (86, 54990), (98, 55095), (110, 55152),

Gene: Fruitloop_96 Start: 54438, Stop: 54851, Start Num: 58

Candidate Starts for Fruitloop_96:

(Start: 58 @54438 has 123 MA's), (86, 54666), (98, 54771), (110, 54828),

Gene: Fulbright_68 Start: 41385, Stop: 41690, Start Num: 71

Candidate Starts for Fulbright_68:

(Start: 39 @41139 has 4 MA's), (Start: 48 @41235 has 17 MA's), (Start: 61 @41292 has 26 MA's), (Start: 71 @41385 has 1 MA's), (75, 41409), (103, 41646),

Gene: GUmbie_97 Start: 53311, Stop: 53712, Start Num: 62
Candidate Starts for GUmbie_97:
(45, 53245), (Start: 55 @53296 has 2 MA's), (Start: 58 @53299 has 123 MA's), (Start: 62 @53311 has 85 MA's), (86, 53527), (98, 53632),

Gene: Galactic_102 Start: 53734, Stop: 54135, Start Num: 62
Candidate Starts for Galactic_102:
(41, 53632), (45, 53668), (Start: 55 @53719 has 2 MA's), (Start: 58 @53722 has 123 MA's), (Start: 62 @53734 has 85 MA's), (86, 53950), (110, 54112),

Gene: Gandalph_98 Start: 51417, Stop: 51818, Start Num: 62
Candidate Starts for Gandalph_98:
(6, 51003), (14, 51069), (17, 51099), (20, 51150), (45, 51351), (Start: 55 @51402 has 2 MA's), (Start: 58 @51405 has 123 MA's), (Start: 62 @51417 has 85 MA's), (86, 51633), (110, 51795),

Gene: Geralt_91 Start: 52181, Stop: 52582, Start Num: 62
Candidate Starts for Geralt_91:
(45, 52115), (Start: 55 @52166 has 2 MA's), (Start: 58 @52169 has 123 MA's), (Start: 62 @52181 has 85 MA's), (86, 52397), (110, 52559),

Gene: Gex_70 Start: 42535, Stop: 42990, Start Num: 48
Candidate Starts for Gex_70:
(Start: 39 @42439 has 4 MA's), (Start: 48 @42535 has 17 MA's), (Start: 61 @42592 has 26 MA's), (Start: 71 @42685 has 1 MA's), (75, 42709), (103, 42946),

Gene: GigiOuiOui_93 Start: 52314, Stop: 52715, Start Num: 62
Candidate Starts for GigiOuiOui_93:
(45, 52248), (Start: 55 @52299 has 2 MA's), (Start: 58 @52302 has 123 MA's), (Start: 62 @52314 has 85 MA's), (86, 52530),

Gene: Girafales_107 Start: 55293, Stop: 55697, Start Num: 62
Candidate Starts for Girafales_107:
(Start: 62 @55293 has 85 MA's), (73, 55389), (75, 55404), (80, 55470), (86, 55512), (88, 55533), (98, 55617),

Gene: Girr_97 Start: 54180, Stop: 54581, Start Num: 62
Candidate Starts for Girr_97:
(45, 54114), (Start: 55 @54165 has 2 MA's), (Start: 58 @54168 has 123 MA's), (Start: 62 @54180 has 85 MA's), (86, 54396), (110, 54558),

Gene: Gorge_97 Start: 54389, Stop: 54802, Start Num: 58
Candidate Starts for Gorge_97:
(Start: 58 @54389 has 123 MA's), (86, 54617), (100, 54725),

Gene: Grimmer_106 Start: 53746, Stop: 54159, Start Num: 58
Candidate Starts for Grimmer_106:
(Start: 58 @53746 has 123 MA's), (86, 53974), (110, 54136),

Gene: Guppsters_93 Start: 51279, Stop: 51692, Start Num: 58
Candidate Starts for Guppsters_93:
(42, 51186), (47, 51234), (Start: 58 @51279 has 123 MA's), (86, 51507), (110, 51669),

Gene: HC_73 Start: 43335, Stop: 43763, Start Num: 59

Candidate Starts for HC_73:

(Start: 59 @43335 has 8 MA's), (66, 43380), (76, 43455), (77, 43467), (82, 43527), (85, 43533), (93, 43632), (110, 43719),

Gene: Hades_95 Start: 50900, Stop: 51301, Start Num: 62

Candidate Starts for Hades_95:

(6, 50552), (16, 50642), (17, 50648), (20, 50699), (45, 50834), (Start: 55 @50885 has 2 MA's), (Start: 58 @50888 has 123 MA's), (Start: 62 @50900 has 85 MA's), (86, 51116), (110, 51278),

Gene: Hamulus_98 Start: 53123, Stop: 53536, Start Num: 58

Candidate Starts for Hamulus_98:

(42, 53030), (47, 53078), (Start: 58 @53123 has 123 MA's), (86, 53351), (98, 53456), (110, 53513),

Gene: Hanako_67 Start: 41426, Stop: 41881, Start Num: 48

Candidate Starts for Hanako_67:

(Start: 39 @41330 has 4 MA's), (Start: 44 @41411 has 1 MA's), (Start: 48 @41426 has 17 MA's), (Start: 61 @41483 has 26 MA's), (66, 41534), (75, 41600), (82, 41663), (103, 41837),

Gene: Harley_100 Start: 54295, Stop: 54708, Start Num: 58

Candidate Starts for Harley_100:

(Start: 58 @54295 has 123 MA's), (86, 54523), (110, 54685),

Gene: Hegedechwinu_106 Start: 53659, Stop: 54072, Start Num: 58

Candidate Starts for Hegedechwinu_106:

(Start: 58 @53659 has 123 MA's), (86, 53887), (98, 53992), (110, 54049),

Gene: Hlubikazi_96 Start: 51902, Stop: 52315, Start Num: 58

Candidate Starts for Hlubikazi_96:

(42, 51809), (47, 51857), (Start: 58 @51902 has 123 MA's), (86, 52130), (98, 52235), (110, 52292),

Gene: IMPilo_96 Start: 51913, Stop: 52314, Start Num: 62

Candidate Starts for IMPilo_96:

(45, 51847), (Start: 55 @51898 has 2 MA's), (Start: 58 @51901 has 123 MA's), (Start: 62 @51913 has 85 MA's), (86, 52129), (98, 52234), (110, 52291),

Gene: lbOuu_94 Start: 51277, Stop: 51678, Start Num: 62

Candidate Starts for lbOuu_94:

(6, 50863), (20, 51010), (45, 51211), (Start: 55 @51262 has 2 MA's), (Start: 58 @51265 has 123 MA's), (Start: 62 @51277 has 85 MA's), (86, 51493),

Gene: lbhubesi_95 Start: 51164, Stop: 51577, Start Num: 58

Candidate Starts for lbhubesi_95:

(Start: 58 @51164 has 123 MA's), (86, 51392), (110, 51554),

Gene: ldergollasper_24 Start: 11046, Stop: 11480, Start Num: 60

Candidate Starts for ldergollasper_24:

(Start: 60 @11046 has 28 MA's), (66, 11100), (69, 11136), (70, 11139), (72, 11148), (75, 11166), (76, 11178), (77, 11187), (78, 11190), (93, 11331), (101, 11373), (103, 11400), (104, 11403),

Gene: Inventum_96 Start: 53469, Stop: 53870, Start Num: 62

Candidate Starts for Inventum_96:

(45, 53403), (Start: 55 @53454 has 2 MA's), (Start: 58 @53457 has 123 MA's), (Start: 62 @53469 has 85 MA's), (86, 53685), (110, 53847),

Gene: IrishSherpFalk_98 Start: 53804, Stop: 54205, Start Num: 62

Candidate Starts for IrishSherpFalk_98:

(6, 53390), (20, 53537), (41, 53699), (45, 53738), (Start: 55 @53789 has 2 MA's), (Start: 58 @53792 has 123 MA's), (Start: 62 @53804 has 85 MA's), (86, 54020), (110, 54182),

Gene: Island3_71 Start: 44316, Stop: 44744, Start Num: 59

Candidate Starts for Island3_71:

(Start: 59 @44316 has 8 MA's), (66, 44361), (72, 44406), (76, 44436), (77, 44448), (93, 44613), (110, 44700),

Gene: JalFarm20_107 Start: 55600, Stop: 56013, Start Num: 58

Candidate Starts for JalFarm20_107:

(42, 55507), (47, 55555), (Start: 58 @55600 has 123 MA's), (86, 55828), (98, 55933), (110, 55990),

Gene: James_102 Start: 55771, Stop: 56184, Start Num: 58

Candidate Starts for James_102:

(Start: 58 @55771 has 123 MA's), (86, 55999), (98, 56104), (110, 56161),

Gene: Jamie19_63 Start: 40165, Stop: 40563, Start Num: 61

Candidate Starts for Jamie19_63:

(Start: 44 @40093 has 1 MA's), (Start: 48 @40108 has 17 MA's), (49, 40114), (Start: 61 @40165 has 26 MA's), (75, 40282), (82, 40345), (103, 40519),

Gene: JangDynasty_24 Start: 11135, Stop: 11569, Start Num: 60

Candidate Starts for JangDynasty_24:

(Start: 60 @11135 has 28 MA's), (66, 11189), (69, 11225), (70, 11228), (72, 11237), (75, 11255), (76, 11267), (77, 11276), (78, 11279), (93, 11420), (101, 11462), (103, 11489), (104, 11492),

Gene: Jacob_101 Start: 55370, Stop: 55783, Start Num: 58

Candidate Starts for Jacob_101:

(Start: 58 @55370 has 123 MA's), (86, 55598), (100, 55706),

Gene: Jinglebell_105 Start: 55047, Stop: 55460, Start Num: 58

Candidate Starts for Jinglebell_105:

(42, 54954), (47, 55002), (Start: 58 @55047 has 123 MA's), (86, 55275), (98, 55380), (100, 55383), (110, 55437),

Gene: Job42_99 Start: 55957, Stop: 56358, Start Num: 62

Candidate Starts for Job42_99:

(41, 55852), (45, 55891), (Start: 55 @55942 has 2 MA's), (Start: 58 @55945 has 123 MA's), (Start: 62 @55957 has 85 MA's), (86, 56173), (110, 56335),

Gene: JoeyJr_101 Start: 55377, Stop: 55778, Start Num: 62

Candidate Starts for JoeyJr_101:

(45, 55311), (Start: 55 @55362 has 2 MA's), (Start: 58 @55365 has 123 MA's), (Start: 62 @55377 has 85 MA's), (86, 55593), (110, 55755),

Gene: Journey_62 Start: 40729, Stop: 41280, Start Num: 39

Candidate Starts for Journey_62:

(Start: 39 @40729 has 4 MA's), (Start: 44 @40810 has 1 MA's), (Start: 48 @40825 has 17 MA's), (49, 40831), (Start: 61 @40882 has 26 MA's), (75, 40999), (82, 41062), (103, 41236),

Gene: Juice456_97 Start: 53087, Stop: 53488, Start Num: 62

Candidate Starts for Juice456_97:

(45, 53021), (Start: 55 @53072 has 2 MA's), (Start: 58 @53075 has 123 MA's), (Start: 62 @53087 has 85 MA's), (86, 53303), (110, 53465),

Gene: Juniper1_90 Start: 52071, Stop: 52475, Start Num: 61

Candidate Starts for Juniper1_90:

(Start: 61 @52071 has 26 MA's), (86, 52290), (110, 52452),

Gene: Karhdo_93 Start: 51546, Stop: 51947, Start Num: 62

Candidate Starts for Karhdo_93:

(41, 51441), (Start: 55 @51531 has 2 MA's), (Start: 58 @51534 has 123 MA's), (Start: 62 @51546 has 85 MA's), (79, 51696), (86, 51762), (98, 51867), (110, 51924),

Gene: Kenuha5_90 Start: 52947, Stop: 53360, Start Num: 58

Candidate Starts for Kenuha5_90:

(21, 52710), (29, 52773), (34, 52785), (40, 52821), (42, 52854), (47, 52902), (Start: 58 @52947 has 123 MA's), (86, 53175), (98, 53280), (110, 53337),

Gene: Kersh_101 Start: 56116, Stop: 56529, Start Num: 58

Candidate Starts for Kersh_101:

(Start: 58 @56116 has 123 MA's), (86, 56344), (110, 56506),

Gene: Kevin1_67 Start: 40831, Stop: 41286, Start Num: 48

Candidate Starts for Kevin1_67:

(26, 40690), (Start: 39 @40735 has 4 MA's), (47, 40828), (Start: 48 @40831 has 17 MA's), (Start: 61 @40888 has 26 MA's), (Start: 71 @40981 has 1 MA's), (75, 41005), (82, 41068), (103, 41242), (106, 41248),

Gene: Kimberlium_100 Start: 53187, Stop: 53588, Start Num: 62

Candidate Starts for Kimberlium_100:

(45, 53121), (Start: 55 @53172 has 2 MA's), (Start: 58 @53175 has 123 MA's), (Start: 62 @53187 has 85 MA's), (86, 53403), (110, 53565),

Gene: KingMidas_98 Start: 53606, Stop: 54007, Start Num: 62

Candidate Starts for KingMidas_98:

(45, 53540), (Start: 55 @53591 has 2 MA's), (Start: 58 @53594 has 123 MA's), (Start: 62 @53606 has 85 MA's), (86, 53822), (110, 53984),

Gene: Kingsley_107 Start: 57132, Stop: 57545, Start Num: 58

Candidate Starts for Kingsley_107:

(Start: 58 @57132 has 123 MA's), (86, 57360), (98, 57465), (110, 57522),

Gene: Koella_91 Start: 50533, Stop: 50946, Start Num: 58

Candidate Starts for Koella_91:

(Start: 58 @50533 has 123 MA's), (86, 50761), (98, 50866), (110, 50923),

Gene: Krakatau_91 Start: 49504, Stop: 49905, Start Num: 62

Candidate Starts for Krakatau_91:

(16, 49180), (17, 49186), (20, 49237), (41, 49399), (45, 49438), (Start: 55 @49489 has 2 MA's), (Start: 58 @49492 has 123 MA's), (Start: 62 @49504 has 85 MA's), (86, 49720), (100, 49828), (110, 49882),

Gene: Krili_25 Start: 11405, Stop: 11839, Start Num: 60

Candidate Starts for Krili_25:

(Start: 60 @11405 has 28 MA's), (66, 11459), (69, 11495), (70, 11498), (72, 11507), (75, 11525), (76, 11537), (77, 11546), (78, 11549), (93, 11690), (101, 11732), (103, 11759), (104, 11762),

Gene: KristaRAM_106 Start: 54855, Stop: 55268, Start Num: 58

Candidate Starts for KristaRAM_106:

(22, 54630), (24, 54660), (31, 54687), (47, 54810), (Start: 58 @54855 has 123 MA's), (86, 55083), (110, 55245),

Gene: LastJedi_89 Start: 51590, Stop: 52003, Start Num: 58

Candidate Starts for LastJedi_89:

(Start: 58 @51590 has 123 MA's), (86, 51818), (98, 51923), (110, 51980),

Gene: Latretium_101 Start: 54636, Stop: 55049, Start Num: 58

Candidate Starts for Latretium_101:

(Start: 58 @54636 has 123 MA's), (86, 54864), (110, 55026),

Gene: Leozinho_95 Start: 51125, Stop: 51526, Start Num: 62

Candidate Starts for Leozinho_95:

(45, 51059), (Start: 55 @51110 has 2 MA's), (Start: 58 @51113 has 123 MA's), (Start: 62 @51125 has 85 MA's), (86, 51341), (110, 51503),

Gene: Leperchaun_100 Start: 54611, Stop: 55012, Start Num: 62

Candidate Starts for Leperchaun_100:

(45, 54545), (Start: 55 @54596 has 2 MA's), (Start: 58 @54599 has 123 MA's), (Start: 62 @54611 has 85 MA's), (86, 54827), (110, 54989),

Gene: LilMoolah_101 Start: 54570, Stop: 54983, Start Num: 58

Candidate Starts for LilMoolah_101:

(Start: 58 @54570 has 123 MA's), (86, 54798), (100, 54906),

Gene: LittleShirley_106 Start: 54967, Stop: 55380, Start Num: 58

Candidate Starts for LittleShirley_106:

(Start: 58 @54967 has 123 MA's), (86, 55195), (98, 55300), (110, 55357),

Gene: Lizziana_99 Start: 54838, Stop: 55251, Start Num: 58

Candidate Starts for Lizziana_99:

(Start: 58 @54838 has 123 MA's), (86, 55066), (98, 55171), (110, 55228),

Gene: Llama_105 Start: 54690, Stop: 55103, Start Num: 58

Candidate Starts for Llama_105:

(Start: 58 @54690 has 123 MA's), (86, 54918), (110, 55080),

Gene: Llij_93 Start: 52521, Stop: 52934, Start Num: 58

Candidate Starts for Llij_93:

(42, 52428), (47, 52476), (Start: 58 @52521 has 123 MA's), (86, 52749),

Gene: Lorde_101 Start: 50449, Stop: 50850, Start Num: 62

Candidate Starts for Lorde_101:

(6, 50035), (20, 50182), (41, 50344), (45, 50383), (Start: 55 @50434 has 2 MA's), (Start: 58 @50437 has 123 MA's), (Start: 62 @50449 has 85 MA's), (86, 50665), (100, 50773),

Gene: LunaBlu_105 Start: 55220, Stop: 55621, Start Num: 62

Candidate Starts for LunaBlu_105:

(41, 55118), (45, 55154), (Start: 55 @55205 has 2 MA's), (Start: 58 @55208 has 123 MA's), (Start: 62 @55220 has 85 MA's), (86, 55436), (110, 55598),

Gene: LunaStella_95 Start: 51843, Stop: 52268, Start Num: 61

Candidate Starts for LunaStella_95:

(45, 51777), (Start: 55 @51828 has 2 MA's), (Start: 57 @51831 has 1 MA's), (Start: 61 @51843 has 26 MA's), (63, 51858), (65, 51876), (68, 51927), (74, 51951), (75, 51960), (78, 51987), (82, 52023), (83, 52029), (88, 52068), (89, 52077), (93, 52125), (99, 52161), (102, 52170), (105, 52200), (113, 52260),

Gene: MadKillah_26 Start: 11438, Stop: 11872, Start Num: 60

Candidate Starts for MadKillah_26:

(Start: 60 @11438 has 28 MA's), (66, 11492), (69, 11528), (70, 11531), (72, 11540), (75, 11558), (76, 11570), (77, 11579), (78, 11582), (93, 11723), (101, 11765), (103, 11792), (104, 11795),

Gene: MadMen_103 Start: 54148, Stop: 54549, Start Num: 62

Candidate Starts for MadMen_103:

(45, 54082), (Start: 55 @54133 has 2 MA's), (Start: 58 @54136 has 123 MA's), (Start: 62 @54148 has 85 MA's), (86, 54364), (110, 54526),

Gene: Madiba_97 Start: 52890, Stop: 53291, Start Num: 62

Candidate Starts for Madiba_97:

(6, 52476), (20, 52623), (45, 52824), (Start: 55 @52875 has 2 MA's), (Start: 58 @52878 has 123 MA's), (Start: 62 @52890 has 85 MA's), (86, 53106), (110, 53268),

Gene: Magsby_69 Start: 42538, Stop: 42936, Start Num: 61

Candidate Starts for Magsby_69:

(Start: 39 @42385 has 4 MA's), (Start: 48 @42481 has 17 MA's), (Start: 61 @42538 has 26 MA's), (Start: 71 @42631 has 1 MA's), (75, 42655), (103, 42892),

Gene: Mahavrat_92 Start: 51100, Stop: 51504, Start Num: 61

Candidate Starts for Mahavrat_92:

(Start: 61 @51100 has 26 MA's), (86, 51319), (110, 51481),

Gene: Mandlovu_96 Start: 51844, Stop: 52257, Start Num: 58

Candidate Starts for Mandlovu_96:

(42, 51751), (47, 51799), (Start: 58 @51844 has 123 MA's), (86, 52072), (98, 52177), (110, 52234),

Gene: Mantra_96 Start: 53210, Stop: 53611, Start Num: 62

Candidate Starts for Mantra_96:

(45, 53144), (Start: 55 @53195 has 2 MA's), (Start: 58 @53198 has 123 MA's), (Start: 62 @53210 has 85 MA's), (86, 53426),

Gene: Maravista_95 Start: 55498, Stop: 55911, Start Num: 58

Candidate Starts for Maravista_95:

(Start: 58 @55498 has 123 MA's), (86, 55726), (98, 55831), (110, 55888),

Gene: Marker_104 Start: 54993, Stop: 55394, Start Num: 62

Candidate Starts for Marker_104:

(1, 54321), (2, 54423), (3, 54426), (4, 54489), (6, 54582), (17, 54678), (20, 54729), (41, 54891), (45, 54927), (Start: 55 @54978 has 2 MA's), (Start: 58 @54981 has 123 MA's), (Start: 62 @54993 has 85 MA's), (86, 55209), (110, 55371),

Gene: Martik_97 Start: 55301, Stop: 55714, Start Num: 58
Candidate Starts for Martik_97:
(Start: 58 @55301 has 123 MA's), (86, 55529), (107, 55682), (110, 55691),

Gene: Mattes_99 Start: 54507, Stop: 54920, Start Num: 58
Candidate Starts for Mattes_99:
(Start: 58 @54507 has 123 MA's), (86, 54735), (100, 54843),

Gene: Melissauren88_88 Start: 50323, Stop: 50736, Start Num: 58
Candidate Starts for Melissauren88_88:
(42, 50230), (47, 50278), (Start: 58 @50323 has 123 MA's), (86, 50551), (98, 50656), (110, 50713),

Gene: Melville_75 Start: 42147, Stop: 42545, Start Num: 61
Candidate Starts for Melville_75:
(Start: 39 @41994 has 4 MA's), (Start: 48 @42090 has 17 MA's), (Start: 61 @42147 has 26 MA's),
(Start: 71 @42240 has 1 MA's), (75, 42264), (103, 42501),

Gene: MichelleMyBell_68 Start: 41071, Stop: 41526, Start Num: 48
Candidate Starts for MichelleMyBell_68:
(Start: 44 @41056 has 1 MA's), (Start: 48 @41071 has 17 MA's), (49, 41077), (Start: 61 @41128 has 26 MA's), (75, 41245), (82, 41308), (103, 41482),

Gene: MilanaBonita_91 Start: 52219, Stop: 52632, Start Num: 58
Candidate Starts for MilanaBonita_91:
(42, 52126), (47, 52174), (Start: 58 @52219 has 123 MA's), (86, 52447), (98, 52552), (110, 52609),

Gene: MilleniumForce_98 Start: 54026, Stop: 54439, Start Num: 58
Candidate Starts for MilleniumForce_98:
(42, 53957), (47, 54005), (Start: 58 @54026 has 123 MA's), (86, 54254), (98, 54359), (110, 54416),

Gene: MinionDave_96 Start: 53928, Stop: 54341, Start Num: 58
Candidate Starts for MinionDave_96:
(42, 53835), (47, 53883), (Start: 58 @53928 has 123 MA's), (86, 54156), (110, 54318),

Gene: Minnie_93 Start: 54919, Stop: 55332, Start Num: 58
Candidate Starts for Minnie_93:
(Start: 58 @54919 has 123 MA's), (86, 55147), (100, 55255),

Gene: Misha28_88 Start: 54301, Stop: 54705, Start Num: 62
Candidate Starts for Misha28_88:
(27, 54103), (33, 54118), (Start: 62 @54301 has 85 MA's),

Gene: MisterCuddles_98 Start: 54180, Stop: 54581, Start Num: 62
Candidate Starts for MisterCuddles_98:
(45, 54114), (Start: 55 @54165 has 2 MA's), (Start: 58 @54168 has 123 MA's), (Start: 62 @54180 has 85 MA's), (86, 54396), (110, 54558),

Gene: Modragons_102 Start: 54678, Stop: 55091, Start Num: 58
Candidate Starts for Modragons_102:
(Start: 58 @54678 has 123 MA's), (86, 54906), (110, 55068),

Gene: MooMoo_92 Start: 51379, Stop: 51864, Start Num: 50
Candidate Starts for MooMoo_92:

(23, 51211), (46, 51364), (47, 51367), (Start: 50 @51379 has 1 MA's), (Start: 59 @51424 has 8 MA's), (66, 51475), (72, 51520), (76, 51550), (77, 51562), (85, 51628), (91, 51703), (92, 51721), (93, 51727), (96, 51745), (100, 51760),

Gene: Moonbeam_101 Start: 54414, Stop: 54827, Start Num: 58

Candidate Starts for Moonbeam_101:

(Start: 58 @54414 has 123 MA's), (86, 54642), (110, 54804),

Gene: Mori_25 Start: 11276, Stop: 11710, Start Num: 60

Candidate Starts for Mori_25:

(Start: 60 @11276 has 28 MA's), (66, 11330), (69, 11366), (70, 11369), (72, 11378), (75, 11396), (76, 11408), (77, 11417), (78, 11420), (93, 11561), (101, 11603), (103, 11630), (104, 11633),

Gene: Mova_100 Start: 53953, Stop: 54369, Start Num: 55

Candidate Starts for Mova_100:

(45, 53902), (Start: 55 @53953 has 2 MA's), (Start: 58 @53956 has 123 MA's), (Start: 62 @53968 has 85 MA's), (86, 54184), (98, 54289), (110, 54346),

Gene: Mozy_102 Start: 53591, Stop: 54004, Start Num: 58

Candidate Starts for Mozy_102:

(Start: 58 @53591 has 123 MA's), (86, 53819), (98, 53924), (110, 53981),

Gene: Ms6_100 Start: 50214, Stop: 50627, Start Num: 58

Candidate Starts for Ms6_100:

(42, 50121), (47, 50169), (Start: 58 @50214 has 123 MA's), (86, 50442), (98, 50547), (110, 50604),

Gene: MulchExplorer_102 Start: 52858, Stop: 53259, Start Num: 62

Candidate Starts for MulchExplorer_102:

(45, 52792), (Start: 55 @52843 has 2 MA's), (Start: 58 @52846 has 123 MA's), (Start: 62 @52858 has 85 MA's), (86, 53074), (110, 53236),

Gene: MulchSalad_100 Start: 54859, Stop: 55260, Start Num: 62

Candidate Starts for MulchSalad_100:

(6, 54445), (20, 54592), (45, 54793), (Start: 55 @54844 has 2 MA's), (Start: 58 @54847 has 123 MA's), (Start: 62 @54859 has 85 MA's), (86, 55075), (110, 55237),

Gene: Murai_25 Start: 11277, Stop: 11711, Start Num: 60

Candidate Starts for Murai_25:

(Start: 60 @11277 has 28 MA's), (66, 11331), (69, 11367), (70, 11370), (72, 11379), (75, 11397), (76, 11409), (77, 11418), (78, 11421), (93, 11562), (101, 11604), (103, 11631), (104, 11634),

Gene: Nenae_68 Start: 41428, Stop: 41883, Start Num: 48

Candidate Starts for Nenae_68:

(Start: 39 @41332 has 4 MA's), (Start: 44 @41413 has 1 MA's), (Start: 48 @41428 has 17 MA's), (Start: 61 @41485 has 26 MA's), (66, 41536), (75, 41602), (82, 41665), (103, 41839),

Gene: NiebruSaylor_25 Start: 11277, Stop: 11711, Start Num: 60

Candidate Starts for NiebruSaylor_25:

(Start: 60 @11277 has 28 MA's), (66, 11331), (69, 11367), (70, 11370), (72, 11379), (75, 11397), (76, 11409), (77, 11418), (78, 11421), (93, 11562), (101, 11604), (103, 11631), (104, 11634),

Gene: Nimbo_90 Start: 52183, Stop: 52584, Start Num: 62

Candidate Starts for Nimbo_90:

(45, 52117), (Start: 55 @52168 has 2 MA's), (Start: 58 @52171 has 123 MA's), (Start: 62 @52183 has 85 MA's), (86, 52399), (110, 52561),

Gene: Nitzel_92 Start: 50796, Stop: 51197, Start Num: 62

Candidate Starts for Nitzel_92:

(6, 50382), (14, 50448), (17, 50478), (20, 50529), (45, 50730), (Start: 55 @50781 has 2 MA's), (Start: 58 @50784 has 123 MA's), (Start: 62 @50796 has 85 MA's), (86, 51012), (100, 51120), (110, 51174),

Gene: Nivrat_98 Start: 54443, Stop: 54856, Start Num: 58

Candidate Starts for Nivrat_98:

(Start: 58 @54443 has 123 MA's), (86, 54671), (100, 54779),

Gene: NormanBulbieJr_96 Start: 54547, Stop: 54960, Start Num: 58

Candidate Starts for NormanBulbieJr_96:

(Start: 58 @54547 has 123 MA's), (86, 54775), (98, 54880), (110, 54937),

Gene: Ochi17_104 Start: 54285, Stop: 54698, Start Num: 58

Candidate Starts for Ochi17_104:

(Start: 58 @54285 has 123 MA's), (86, 54513), (110, 54675),

Gene: OfUltron_105 Start: 54834, Stop: 55247, Start Num: 58

Candidate Starts for OfUltron_105:

(Start: 58 @54834 has 123 MA's), (86, 55062), (110, 55224),

Gene: Ogopogo_102 Start: 52785, Stop: 53189, Start Num: 61

Candidate Starts for Ogopogo_102:

(Start: 61 @52785 has 26 MA's), (86, 53004), (110, 53166),

Gene: Oksu_102 Start: 55924, Stop: 56337, Start Num: 58

Candidate Starts for Oksu_102:

(Start: 58 @55924 has 123 MA's), (86, 56152), (110, 56314),

Gene: OldBen_95 Start: 53575, Stop: 53976, Start Num: 62

Candidate Starts for OldBen_95:

(45, 53509), (Start: 55 @53560 has 2 MA's), (Start: 58 @53563 has 123 MA's), (Start: 62 @53575 has 85 MA's), (86, 53791), (110, 53953),

Gene: OlympiaSaint_102 Start: 54713, Stop: 55150, Start Num: 58

Candidate Starts for OlympiaSaint_102:

(Start: 58 @54713 has 123 MA's), (86, 54941), (98, 55046), (110, 55103), (112, 55127),

Gene: Ovechkin_101 Start: 54263, Stop: 54676, Start Num: 58

Candidate Starts for Ovechkin_101:

(Start: 58 @54263 has 123 MA's), (86, 54491), (110, 54653),

Gene: OwlsT2W_96 Start: 52467, Stop: 52880, Start Num: 58

Candidate Starts for OwlsT2W_96:

(42, 52374), (47, 52422), (Start: 58 @52467 has 123 MA's), (86, 52695), (98, 52800), (110, 52857),

Gene: PHappiness_98 Start: 54404, Stop: 54805, Start Num: 62

Candidate Starts for PHappiness_98:

(45, 54338), (Start: 55 @54389 has 2 MA's), (Start: 58 @54392 has 123 MA's), (Start: 62 @54404 has 85 MA's), (86, 54620), (110, 54782),

Gene: PMC_97 Start: 52619, Stop: 53020, Start Num: 62

Candidate Starts for PMC_97:

(6, 52205), (20, 52352), (41, 52514), (45, 52553), (Start: 55 @52604 has 2 MA's), (Start: 58 @52607 has 123 MA's), (Start: 62 @52619 has 85 MA's), (86, 52835), (100, 52943),

Gene: Pacc40_96 Start: 54998, Stop: 55399, Start Num: 62

Candidate Starts for Pacc40_96:

(41, 54893), (45, 54932), (Start: 55 @54983 has 2 MA's), (Start: 58 @54986 has 123 MA's), (Start: 62 @54998 has 85 MA's), (86, 55214), (110, 55376),

Gene: Panchino_64 Start: 42391, Stop: 42801, Start Num: 61

Candidate Starts for Panchino_64:

(Start: 44 @42319 has 1 MA's), (Start: 48 @42334 has 17 MA's), (49, 42340), (Start: 61 @42391 has 26 MA's), (Start: 71 @42484 has 1 MA's), (75, 42508), (82, 42571),

Gene: Parmesanjohn_70 Start: 42596, Stop: 42994, Start Num: 61

Candidate Starts for Parmesanjohn_70:

(Start: 39 @42443 has 4 MA's), (Start: 48 @42539 has 17 MA's), (Start: 61 @42596 has 26 MA's), (Start: 71 @42689 has 1 MA's), (75, 42713), (103, 42950),

Gene: Phalconet_99 Start: 53616, Stop: 54029, Start Num: 58

Candidate Starts for Phalconet_99:

(42, 53523), (47, 53571), (Start: 58 @53616 has 123 MA's), (86, 53844), (98, 53949), (110, 54006),

Gene: PhancyPhin_67 Start: 41342, Stop: 41740, Start Num: 61

Candidate Starts for PhancyPhin_67:

(Start: 39 @41189 has 4 MA's), (Start: 44 @41270 has 1 MA's), (Start: 48 @41285 has 17 MA's), (49, 41291), (Start: 61 @41342 has 26 MA's), (75, 41459), (82, 41522), (103, 41696),

Gene: Phanphagia_103 Start: 55371, Stop: 55784, Start Num: 58

Candidate Starts for Phanphagia_103:

(Start: 58 @55371 has 123 MA's), (86, 55599), (98, 55704), (110, 55761),

Gene: Phasih_95 Start: 52516, Stop: 52917, Start Num: 62

Candidate Starts for Phasih_95:

(6, 52102), (14, 52168), (17, 52198), (20, 52249), (45, 52450), (Start: 55 @52501 has 2 MA's), (Start: 58 @52504 has 123 MA's), (Start: 62 @52516 has 85 MA's), (86, 52732), (110, 52894),

Gene: Phatniss_96 Start: 52948, Stop: 53361, Start Num: 58

Candidate Starts for Phatniss_96:

(42, 52855), (47, 52903), (Start: 58 @52948 has 123 MA's), (86, 53176), (98, 53281), (110, 53338),

Gene: PhesterPhotato_102 Start: 53590, Stop: 54003, Start Num: 58

Candidate Starts for PhesterPhotato_102:

(42, 53497), (47, 53545), (Start: 58 @53590 has 123 MA's), (86, 53818), (110, 53980),

Gene: Philonius_70 Start: 42725, Stop: 43180, Start Num: 48

Candidate Starts for Philonius_70:

(Start: 39 @42629 has 4 MA's), (Start: 44 @42710 has 1 MA's), (Start: 48 @42725 has 17 MA's), (49, 42731), (Start: 61 @42782 has 26 MA's), (75, 42899), (103, 43136),

Gene: Philus_102 Start: 55678, Stop: 56091, Start Num: 58

Candidate Starts for Philus_102:

(22, 55453), (24, 55483), (31, 55510), (47, 55633), (Start: 58 @55678 has 123 MA's), (86, 55906), (98, 56011), (110, 56068),

Gene: Phloss_68 Start: 42003, Stop: 42401, Start Num: 61

Candidate Starts for Phloss_68:

(Start: 39 @41850 has 4 MA's), (Start: 48 @41946 has 17 MA's), (Start: 61 @42003 has 26 MA's), (Start: 71 @42096 has 1 MA's), (75, 42120), (103, 42357),

Gene: Phrann_65 Start: 43606, Stop: 44157, Start Num: 39

Candidate Starts for Phrann_65:

(Start: 39 @43606 has 4 MA's), (Start: 44 @43687 has 1 MA's), (Start: 48 @43702 has 17 MA's), (49, 43708), (Start: 61 @43759 has 26 MA's), (75, 43876), (82, 43939), (103, 44113),

Gene: Piper2020_93 Start: 54549, Stop: 54953, Start Num: 62

Candidate Starts for Piper2020_93:

(27, 54351), (33, 54366), (Start: 62 @54549 has 85 MA's),

Gene: Pippy_96 Start: 52818, Stop: 53231, Start Num: 58

Candidate Starts for Pippy_96:

(Start: 58 @52818 has 123 MA's), (86, 53046), (98, 53151), (110, 53208),

Gene: Pipsqueaks_71 Start: 42517, Stop: 42972, Start Num: 48

Candidate Starts for Pipsqueaks_71:

(Start: 39 @42421 has 4 MA's), (Start: 48 @42517 has 17 MA's), (Start: 61 @42574 has 26 MA's), (Start: 71 @42667 has 1 MA's), (75, 42691), (103, 42928),

Gene: Plumbus_97 Start: 51288, Stop: 51701, Start Num: 58

Candidate Starts for Plumbus_97:

(Start: 58 @51288 has 123 MA's), (86, 51516),

Gene: Poenanya_102 Start: 55112, Stop: 55513, Start Num: 62

Candidate Starts for Poenanya_102:

(45, 55046), (Start: 55 @55097 has 2 MA's), (Start: 58 @55100 has 123 MA's), (Start: 62 @55112 has 85 MA's), (86, 55328), (110, 55490),

Gene: Polka14_102 Start: 55173, Stop: 55574, Start Num: 62

Candidate Starts for Polka14_102:

(45, 55107), (Start: 55 @55158 has 2 MA's), (Start: 58 @55161 has 123 MA's), (Start: 62 @55173 has 85 MA's), (86, 55389), (110, 55551),

Gene: Pollywog_100 Start: 55231, Stop: 55632, Start Num: 62

Candidate Starts for Pollywog_100:

(45, 55165), (Start: 55 @55216 has 2 MA's), (Start: 58 @55219 has 123 MA's), (Start: 62 @55231 has 85 MA's), (86, 55447), (110, 55609),

Gene: PopTart_89 Start: 51020, Stop: 51433, Start Num: 58

Candidate Starts for PopTart_89:

(Start: 58 @51020 has 123 MA's), (86, 51248), (98, 51353), (110, 51410),

Gene: Priscilla_99 Start: 54645, Stop: 55058, Start Num: 58

Candidate Starts for Priscilla_99:

(Start: 58 @54645 has 123 MA's), (86, 54873), (98, 54978), (110, 55035),

Gene: Purgamenstris_68 Start: 41483, Stop: 41881, Start Num: 61

Candidate Starts for Purgamenstris_68:

(Start: 39 @41330 has 4 MA's), (Start: 44 @41411 has 1 MA's), (Start: 48 @41426 has 17 MA's),
(Start: 61 @41483 has 26 MA's), (66, 41534), (75, 41600), (82, 41663), (103, 41837),

Gene: QueenHazel_68 Start: 44336, Stop: 44764, Start Num: 59

Candidate Starts for QueenHazel_68:

(Start: 59 @44336 has 8 MA's), (66, 44381), (76, 44456), (77, 44468), (93, 44633), (97, 44657), (110,
44720),

Gene: QuickMath_99 Start: 53439, Stop: 53840, Start Num: 62

Candidate Starts for QuickMath_99:

(45, 53373), (Start: 55 @53424 has 2 MA's), (Start: 58 @53427 has 123 MA's), (Start: 62 @53439 has
85 MA's), (86, 53655), (110, 53817),

Gene: Quico_107 Start: 55508, Stop: 55912, Start Num: 62

Candidate Starts for Quico_107:

(Start: 62 @55508 has 85 MA's), (73, 55604), (75, 55619), (80, 55685), (86, 55727), (88, 55748), (98,
55832),

Gene: Radiance_96 Start: 53516, Stop: 53917, Start Num: 62

Candidate Starts for Radiance_96:

(45, 53450), (Start: 55 @53501 has 2 MA's), (Start: 58 @53504 has 123 MA's), (Start: 62 @53516 has
85 MA's), (86, 53732), (110, 53894),

Gene: Ramsey_103 Start: 55412, Stop: 55813, Start Num: 62

Candidate Starts for Ramsey_103:

(6, 55064), (20, 55211), (45, 55346), (Start: 55 @55397 has 2 MA's), (Start: 58 @55400 has 123 MA's),
(Start: 62 @55412 has 85 MA's), (86, 55628), (110, 55790),

Gene: Raymond7_61 Start: 41271, Stop: 41669, Start Num: 61

Candidate Starts for Raymond7_61:

(Start: 39 @41118 has 4 MA's), (Start: 44 @41199 has 1 MA's), (Start: 48 @41214 has 17 MA's),
(Start: 61 @41271 has 26 MA's), (66, 41322), (75, 41388), (82, 41451), (103, 41625),

Gene: Rebel_64 Start: 39467, Stop: 39865, Start Num: 61

Candidate Starts for Rebel_64:

(Start: 39 @39314 has 4 MA's), (Start: 44 @39395 has 1 MA's), (Start: 48 @39410 has 17 MA's),
(Start: 61 @39467 has 26 MA's), (66, 39518), (75, 39584), (82, 39647), (103, 39821),

Gene: RedBird_99 Start: 55151, Stop: 55552, Start Num: 62

Candidate Starts for RedBird_99:

(45, 55085), (Start: 55 @55136 has 2 MA's), (Start: 58 @55139 has 123 MA's), (Start: 62 @55151 has
85 MA's), (86, 55367), (110, 55529),

Gene: Redi_67 Start: 41425, Stop: 41880, Start Num: 48

Candidate Starts for Redi_67:

(Start: 39 @41329 has 4 MA's), (Start: 44 @41410 has 1 MA's), (Start: 48 @41425 has 17 MA's),
(Start: 61 @41482 has 26 MA's), (66, 41533), (75, 41599), (82, 41662), (103, 41836),

Gene: Renaud18_108 Start: 54756, Stop: 55184, Start Num: 61

Candidate Starts for Renaud18_108:

(8, 54363), (9, 54366), (11, 54372), (13, 54408), (19, 54486), (45, 54690), (Start: 55 @54741 has 2 MA's), (Start: 57 @54744 has 1 MA's), (Start: 61 @54756 has 26 MA's), (64, 54777), (66, 54807), (67, 54825), (74, 54864), (75, 54873), (78, 54900), (80, 54918), (81, 54933), (82, 54936), (83, 54942), (84, 54945), (88, 54981), (92, 55032), (95, 55056), (99, 55074), (102, 55083), (104, 55110), (105, 55113), (108, 55128), (109, 55131), (111, 55140), (113, 55173),

Gene: Rialto_103 Start: 54755, Stop: 55168, Start Num: 58

Candidate Starts for Rialto_103:

(Start: 58 @54755 has 123 MA's), (86, 54983), (110, 55145),

Gene: Rita_98 Start: 55038, Stop: 55628, Start Num: 28

Candidate Starts for Rita_98:

(25, 55026), (Start: 28 @55038 has 1 MA's), (Start: 62 @55227 has 85 MA's), (86, 55443), (98, 55548), (110, 55605),

Gene: RitaG_97 Start: 54206, Stop: 54607, Start Num: 62

Candidate Starts for RitaG_97:

(45, 54140), (Start: 55 @54191 has 2 MA's), (Start: 58 @54194 has 123 MA's), (Start: 62 @54206 has 85 MA's), (86, 54422), (110, 54584),

Gene: Rockne_101 Start: 52631, Stop: 53032, Start Num: 62

Candidate Starts for Rockne_101:

(6, 52217), (20, 52364), (41, 52526), (45, 52565), (Start: 55 @52616 has 2 MA's), (Start: 58 @52619 has 123 MA's), (Start: 62 @52631 has 85 MA's), (86, 52847), (100, 52955),

Gene: RockyHorror_102 Start: 53316, Stop: 53717, Start Num: 62

Candidate Starts for RockyHorror_102:

(45, 53250), (Start: 55 @53301 has 2 MA's), (Start: 58 @53304 has 123 MA's), (Start: 62 @53316 has 85 MA's), (86, 53532), (98, 53637),

Gene: Royals2015_102 Start: 52759, Stop: 53163, Start Num: 62

Candidate Starts for Royals2015_102:

(51, 52714), (52, 52717), (53, 52729), (54, 52741), (Start: 62 @52759 has 85 MA's), (73, 52855), (75, 52870), (80, 52936), (86, 52978), (88, 52999), (89, 53008), (98, 53083),

Gene: Rubeelu_64 Start: 40322, Stop: 40789, Start Num: 48

Candidate Starts for Rubeelu_64:

(Start: 39 @40226 has 4 MA's), (47, 40319), (Start: 48 @40322 has 17 MA's), (Start: 61 @40379 has 26 MA's), (Start: 71 @40472 has 1 MA's), (75, 40496), (82, 40559),

Gene: Ruby_95 Start: 54182, Stop: 54583, Start Num: 62

Candidate Starts for Ruby_95:

(45, 54116), (Start: 55 @54167 has 2 MA's), (Start: 58 @54170 has 123 MA's), (Start: 62 @54182 has 85 MA's), (86, 54398), (110, 54560),

Gene: Ryadel_27 Start: 11859, Stop: 12293, Start Num: 60

Candidate Starts for Ryadel_27:

(Start: 60 @11859 has 28 MA's), (66, 11913), (69, 11949), (70, 11952), (72, 11961), (75, 11979), (76, 11991), (77, 12000), (78, 12003), (93, 12144), (101, 12186), (103, 12213), (104, 12216),

Gene: SG4_99 Start: 54996, Stop: 55397, Start Num: 62

Candidate Starts for SG4_99:

(6, 54582), (14, 54648), (17, 54678), (20, 54729), (45, 54930), (Start: 55 @54981 has 2 MA's), (Start: 58 @54984 has 123 MA's), (Start: 62 @54996 has 85 MA's), (86, 55212), (98, 55317), (110, 55374),

Gene: Saal_96 Start: 54209, Stop: 54622, Start Num: 58

Candidate Starts for Saal_96:

(Start: 58 @54209 has 123 MA's), (86, 54437), (100, 54545),

Gene: Sabbb_101 Start: 52175, Stop: 52588, Start Num: 58

Candidate Starts for Sabbb_101:

(42, 52082), (47, 52130), (Start: 58 @52175 has 123 MA's), (86, 52403), (98, 52508), (110, 52565),

Gene: Sandalphon_98 Start: 55202, Stop: 55615, Start Num: 58

Candidate Starts for Sandalphon_98:

(Start: 58 @55202 has 123 MA's), (86, 55430), (100, 55538),

Gene: Sarma624_100 Start: 51144, Stop: 51557, Start Num: 58

Candidate Starts for Sarma624_100:

(Start: 58 @51144 has 123 MA's), (86, 51372), (98, 51477), (110, 51534),

Gene: Sassafras_100 Start: 53468, Stop: 53869, Start Num: 62

Candidate Starts for Sassafras_100:

(45, 53402), (Start: 55 @53453 has 2 MA's), (Start: 58 @53456 has 123 MA's), (Start: 62 @53468 has 85 MA's), (86, 53684), (110, 53846),

Gene: SassyB_89 Start: 51020, Stop: 51433, Start Num: 58

Candidate Starts for SassyB_89:

(Start: 58 @51020 has 123 MA's), (86, 51248), (98, 51353), (110, 51410),

Gene: Sbash_85 Start: 52628, Stop: 53071, Start Num: 59

Candidate Starts for Sbash_85:

(Start: 59 @52628 has 8 MA's), (72, 52724), (76, 52754), (77, 52766), (91, 52907), (93, 52931), (94, 52940),

Gene: Schnauzer_72 Start: 42596, Stop: 42994, Start Num: 61

Candidate Starts for Schnauzer_72:

(Start: 39 @42443 has 4 MA's), (Start: 48 @42539 has 17 MA's), (Start: 61 @42596 has 26 MA's), (Start: 71 @42689 has 1 MA's), (75, 42713), (103, 42950),

Gene: SchoolBus_24 Start: 11046, Stop: 11480, Start Num: 60

Candidate Starts for SchoolBus_24:

(Start: 60 @11046 has 28 MA's), (66, 11100), (69, 11136), (70, 11139), (72, 11148), (75, 11166), (76, 11178), (77, 11187), (78, 11190), (93, 11331), (101, 11373), (103, 11400), (104, 11403),

Gene: Schuy_26 Start: 11438, Stop: 11872, Start Num: 60

Candidate Starts for Schuy_26:

(Start: 60 @11438 has 28 MA's), (66, 11492), (69, 11528), (70, 11531), (72, 11540), (75, 11558), (76, 11570), (77, 11579), (78, 11582), (93, 11723), (101, 11765), (103, 11792), (104, 11795),

Gene: Scitech_65 Start: 41999, Stop: 42397, Start Num: 61

Candidate Starts for Scitech_65:

(Start: 39 @41846 has 4 MA's), (Start: 48 @41942 has 17 MA's), (Start: 61 @41999 has 26 MA's), (Start: 71 @42092 has 1 MA's), (75, 42116), (103, 42353),

Gene: Scottish_98 Start: 53045, Stop: 53446, Start Num: 62
Candidate Starts for Scottish_98:
(45, 52979), (Start: 55 @53030 has 2 MA's), (Start: 58 @53033 has 123 MA's), (Start: 62 @53045 has 85 MA's), (86, 53261), (110, 53423),

Gene: Seabastian_105 Start: 54835, Stop: 55248, Start Num: 58
Candidate Starts for Seabastian_105:
(Start: 58 @54835 has 123 MA's), (86, 55063), (110, 55225),

Gene: Seagreen_99 Start: 54122, Stop: 54535, Start Num: 58
Candidate Starts for Seagreen_99:
(42, 54029), (47, 54077), (Start: 58 @54122 has 123 MA's), (86, 54350), (98, 54455), (110, 54512),

Gene: Shauna1_100 Start: 54987, Stop: 55400, Start Num: 58
Candidate Starts for Shauna1_100:
(Start: 58 @54987 has 123 MA's), (86, 55215), (98, 55320), (110, 55377),

Gene: ShiLan_101 Start: 56226, Stop: 56639, Start Num: 58
Candidate Starts for ShiLan_101:
(Start: 58 @56226 has 123 MA's), (86, 56454), (100, 56562),

Gene: Shida_25 Start: 11343, Stop: 11777, Start Num: 60
Candidate Starts for Shida_25:
(Start: 60 @11343 has 28 MA's), (66, 11397), (69, 11433), (70, 11436), (72, 11445), (75, 11463), (76, 11475), (77, 11484), (78, 11487), (93, 11628), (101, 11670), (103, 11697), (104, 11700),

Gene: ShowerHandel_99 Start: 53491, Stop: 53904, Start Num: 58
Candidate Starts for ShowerHandel_99:
(Start: 58 @53491 has 123 MA's), (86, 53719), (98, 53824), (110, 53881),

Gene: ShrimpFriedEgg_68 Start: 41482, Stop: 41880, Start Num: 61
Candidate Starts for ShrimpFriedEgg_68:
(Start: 39 @41329 has 4 MA's), (Start: 44 @41410 has 1 MA's), (Start: 48 @41425 has 17 MA's), (Start: 61 @41482 has 26 MA's), (66, 41533), (75, 41599), (82, 41662), (103, 41836),

Gene: ShroomBoi_96 Start: 53551, Stop: 53952, Start Num: 62
Candidate Starts for ShroomBoi_96:
(6, 53137), (14, 53203), (17, 53233), (20, 53284), (45, 53485), (Start: 55 @53536 has 2 MA's), (Start: 58 @53539 has 123 MA's), (Start: 62 @53551 has 85 MA's), (86, 53767), (110, 53929),

Gene: Shweta_64 Start: 41425, Stop: 41976, Start Num: 39
Candidate Starts for Shweta_64:
(Start: 39 @41425 has 4 MA's), (Start: 44 @41506 has 1 MA's), (Start: 48 @41521 has 17 MA's), (49, 41527), (Start: 61 @41578 has 26 MA's), (75, 41695), (82, 41758), (103, 41932),

Gene: SiSi_94 Start: 52735, Stop: 53136, Start Num: 62
Candidate Starts for SiSi_94:
(45, 52669), (Start: 55 @52720 has 2 MA's), (Start: 58 @52723 has 123 MA's), (Start: 62 @52735 has 85 MA's), (86, 52951), (110, 53113),

Gene: Silvafighter_72 Start: 42139, Stop: 42537, Start Num: 61
Candidate Starts for Silvafighter_72:

(Start: 39 @41986 has 4 MA's), (Start: 48 @42082 has 17 MA's), (Start: 61 @42139 has 26 MA's),
(Start: 71 @42232 has 1 MA's), (75, 42256), (103, 42493),

Gene: Silvy_66 Start: 43172, Stop: 43627, Start Num: 48

Candidate Starts for Silvy_66:

(Start: 39 @43076 has 4 MA's), (Start: 48 @43172 has 17 MA's), (Start: 61 @43229 has 26 MA's),
(Start: 71 @43322 has 1 MA's), (75, 43346), (103, 43583),

Gene: SimranZ1_95 Start: 52098, Stop: 52499, Start Num: 62

Candidate Starts for SimranZ1_95:

(10, 51708), (16, 51774), (17, 51780), (20, 51831), (45, 52032), (Start: 55 @52083 has 2 MA's), (Start:
58 @52086 has 123 MA's), (Start: 62 @52098 has 85 MA's), (86, 52314), (110, 52476),

Gene: SkinnyPete_66 Start: 42308, Stop: 42763, Start Num: 48

Candidate Starts for SkinnyPete_66:

(Start: 39 @42212 has 4 MA's), (Start: 44 @42293 has 1 MA's), (Start: 48 @42308 has 17 MA's), (49,
42314), (Start: 61 @42365 has 26 MA's), (75, 42482), (82, 42545), (103, 42719),

Gene: Smooch_28 Start: 12792, Stop: 13226, Start Num: 60

Candidate Starts for Smooch_28:

(Start: 60 @12792 has 28 MA's), (66, 12846), (69, 12882), (70, 12885), (72, 12894), (75, 12912), (76,
12924), (77, 12933), (78, 12936), (93, 13077), (101, 13119), (103, 13146), (104, 13149),

Gene: Smurph_70 Start: 42596, Stop: 42994, Start Num: 61

Candidate Starts for Smurph_70:

(Start: 39 @42443 has 4 MA's), (Start: 48 @42539 has 17 MA's), (Start: 61 @42596 has 26 MA's),
(Start: 71 @42689 has 1 MA's), (75, 42713), (103, 42950),

Gene: Snekmaggedon_62 Start: 40093, Stop: 40563, Start Num: 44

Candidate Starts for Snekmaggedon_62:

(Start: 44 @40093 has 1 MA's), (Start: 48 @40108 has 17 MA's), (49, 40114), (Start: 61 @40165 has
26 MA's), (75, 40282), (82, 40345), (103, 40519),

Gene: Sparkdehlily_105 Start: 52704, Stop: 53117, Start Num: 58

Candidate Starts for Sparkdehlily_105:

(Start: 58 @52704 has 123 MA's), (86, 52932),

Gene: Spartacus_105 Start: 56830, Stop: 57231, Start Num: 62

Candidate Starts for Spartacus_105:

(6, 56419), (20, 56566), (41, 56728), (45, 56764), (Start: 55 @56815 has 2 MA's), (Start: 58 @56818
has 123 MA's), (Start: 62 @56830 has 85 MA's), (86, 57046), (110, 57208),

Gene: Spikelee_99 Start: 55210, Stop: 55611, Start Num: 62

Candidate Starts for Spikelee_99:

(6, 54862), (20, 55009), (45, 55144), (Start: 55 @55195 has 2 MA's), (Start: 58 @55198 has 123 MA's),
(Start: 62 @55210 has 85 MA's), (86, 55426), (100, 55534),

Gene: SpongeBob_63 Start: 40165, Stop: 40563, Start Num: 61

Candidate Starts for SpongeBob_63:

(Start: 44 @40093 has 1 MA's), (Start: 48 @40108 has 17 MA's), (49, 40114), (Start: 61 @40165 has
26 MA's), (75, 40282), (82, 40345), (103, 40519),

Gene: Spoonbill_98 Start: 52139, Stop: 52552, Start Num: 58

Candidate Starts for Spoonbill_98:
(Start: 58 @52139 has 123 MA's), (86, 52367), (100, 52475),

Gene: Squirty_97 Start: 57108, Stop: 57521, Start Num: 58
Candidate Starts for Squirty_97:
(42, 57015), (47, 57063), (Start: 58 @57108 has 123 MA's), (86, 57336), (98, 57441), (110, 57498),

Gene: StAnnes_102 Start: 55035, Stop: 55448, Start Num: 58
Candidate Starts for StAnnes_102:
(42, 54942), (47, 54990), (Start: 58 @55035 has 123 MA's), (86, 55263), (110, 55425),

Gene: Stap_93 Start: 50763, Stop: 51164, Start Num: 62
Candidate Starts for Stap_93:
(6, 50349), (20, 50496), (41, 50658), (45, 50697), (Start: 55 @50748 has 2 MA's), (Start: 58 @50751 has 123 MA's), (Start: 62 @50763 has 85 MA's), (86, 50979), (98, 51084), (110, 51141),

Gene: Starcevich_100 Start: 54868, Stop: 55281, Start Num: 58
Candidate Starts for Starcevich_100:
(Start: 58 @54868 has 123 MA's), (86, 55096), (110, 55258),

Gene: Strokeseat_96 Start: 51901, Stop: 52314, Start Num: 58
Candidate Starts for Strokeseat_96:
(42, 51808), (47, 51856), (Start: 58 @51901 has 123 MA's), (86, 52129), (98, 52234), (110, 52291),

Gene: SuperGrey_98 Start: 55787, Stop: 56200, Start Num: 58
Candidate Starts for SuperGrey_98:
(42, 55694), (47, 55742), (Start: 58 @55787 has 123 MA's), (86, 56015), (98, 56120), (110, 56177),

Gene: SwagPiggett_100 Start: 55345, Stop: 55758, Start Num: 58
Candidate Starts for SwagPiggett_100:
(Start: 58 @55345 has 123 MA's), (86, 55573), (98, 55678), (110, 55735),

Gene: TChen_95 Start: 53782, Stop: 54219, Start Num: 57
Candidate Starts for TChen_95:
(45, 53728), (Start: 55 @53779 has 2 MA's), (Start: 57 @53782 has 1 MA's), (Start: 61 @53794 has 26 MA's), (63, 53809), (65, 53827), (68, 53878), (74, 53902), (75, 53911), (78, 53938), (82, 53974), (83, 53980), (88, 54019), (89, 54028), (93, 54076), (99, 54112), (102, 54121), (105, 54151), (113, 54211),

Gene: TDanisky_106 Start: 52704, Stop: 53117, Start Num: 58
Candidate Starts for TDanisky_106:
(Start: 58 @52704 has 123 MA's), (86, 52932),

Gene: Taj_104 Start: 54993, Stop: 55406, Start Num: 58
Candidate Starts for Taj_104:
(Start: 58 @54993 has 123 MA's), (86, 55221), (98, 55326), (110, 55383),

Gene: Tapioca_68 Start: 43101, Stop: 43499, Start Num: 61
Candidate Starts for Tapioca_68:
(Start: 39 @42948 has 4 MA's), (Start: 48 @43044 has 17 MA's), (Start: 61 @43101 has 26 MA's), (Start: 71 @43194 has 1 MA's), (75, 43218), (103, 43455),

Gene: TelAviv_22 Start: 11043, Stop: 11477, Start Num: 60
Candidate Starts for TelAviv_22:

(Start: 60 @11043 has 28 MA's), (66, 11097), (69, 11133), (70, 11136), (72, 11145), (75, 11163), (76, 11175), (77, 11184), (78, 11187), (93, 11328), (101, 11370), (103, 11397), (104, 11400),

Gene: ThetaBob_101 Start: 52977, Stop: 53405, Start Num: 61

Candidate Starts for ThetaBob_101:

(5, 52563), (7, 52587), (15, 52659), (18, 52710), (45, 52911), (Start: 55 @52962 has 2 MA's), (Start: 57 @52965 has 1 MA's), (Start: 61 @52977 has 26 MA's), (64, 52998), (66, 53028), (67, 53046), (74, 53085), (75, 53094), (78, 53121), (80, 53139), (81, 53154), (82, 53157), (83, 53163), (84, 53166), (88, 53202), (92, 53253), (95, 53277), (99, 53295), (102, 53304), (104, 53331), (105, 53334), (108, 53349), (109, 53352), (111, 53361), (113, 53394),

Gene: TootsiePop_88 Start: 54301, Stop: 54705, Start Num: 62

Candidate Starts for TootsiePop_88:

(27, 54103), (33, 54118), (Start: 62 @54301 has 85 MA's),

Gene: Tootsieroll_92 Start: 54137, Stop: 54550, Start Num: 58

Candidate Starts for Tootsieroll_92:

(42, 54044), (47, 54092), (Start: 58 @54137 has 123 MA's), (86, 54365), (98, 54470), (110, 54527),

Gene: Toron_102 Start: 55585, Stop: 56013, Start Num: 61

Candidate Starts for Toron_102:

(35, 55417), (Start: 55 @55570 has 2 MA's), (Start: 57 @55573 has 1 MA's), (Start: 61 @55585 has 26 MA's), (63, 55600), (68, 55669), (74, 55693), (75, 55702), (84, 55774), (87, 55795), (88, 55810), (102, 55912), (104, 55939), (105, 55942),

Gene: Totinger_101 Start: 54268, Stop: 54681, Start Num: 58

Candidate Starts for Totinger_101:

(Start: 58 @54268 has 123 MA's), (86, 54496), (110, 54658),

Gene: Tweety_99 Start: 54399, Stop: 54800, Start Num: 62

Candidate Starts for Tweety_99:

(45, 54333), (Start: 55 @54384 has 2 MA's), (Start: 58 @54387 has 123 MA's), (Start: 62 @54399 has 85 MA's), (86, 54615), (98, 54720), (110, 54777),

Gene: UncleRicky_98 Start: 52505, Stop: 52906, Start Num: 62

Candidate Starts for UncleRicky_98:

(6, 52091), (20, 52238), (41, 52400), (45, 52439), (Start: 55 @52490 has 2 MA's), (Start: 58 @52493 has 123 MA's), (Start: 62 @52505 has 85 MA's), (86, 52721), (100, 52829),

Gene: VRedHorse_99 Start: 51255, Stop: 51656, Start Num: 62

Candidate Starts for VRedHorse_99:

(6, 50907), (20, 51054), (45, 51189), (Start: 55 @51240 has 2 MA's), (Start: 58 @51243 has 123 MA's), (Start: 62 @51255 has 85 MA's), (86, 51471), (110, 51633),

Gene: Vagabond_25 Start: 11320, Stop: 11754, Start Num: 60

Candidate Starts for Vagabond_25:

(Start: 60 @11320 has 28 MA's), (66, 11374), (69, 11410), (70, 11413), (72, 11422), (75, 11440), (76, 11452), (77, 11461), (78, 11464), (93, 11605), (101, 11647), (103, 11674), (104, 11677),

Gene: Velveteen_95 Start: 51144, Stop: 51557, Start Num: 58

Candidate Starts for Velveteen_95:

(Start: 58 @51144 has 123 MA's), (86, 51372), (98, 51477), (110, 51534),

Gene: Veteran_89 Start: 52603, Stop: 53004, Start Num: 62
Candidate Starts for Veteran_89:
(45, 52537), (Start: 55 @52588 has 2 MA's), (Start: 58 @52591 has 123 MA's), (Start: 62 @52603 has 85 MA's), (86, 52819), (110, 52981),

Gene: Vivum_100 Start: 55580, Stop: 55993, Start Num: 58
Candidate Starts for Vivum_100:
(Start: 58 @55580 has 123 MA's), (86, 55808), (110, 55970),

Gene: Vorrps_25 Start: 11277, Stop: 11711, Start Num: 60
Candidate Starts for Vorrps_25:
(Start: 60 @11277 has 28 MA's), (66, 11331), (69, 11367), (70, 11370), (72, 11379), (75, 11397), (76, 11409), (77, 11418), (78, 11421), (93, 11562), (101, 11604), (103, 11631), (104, 11634),

Gene: Wachhund_95 Start: 50439, Stop: 50852, Start Num: 58
Candidate Starts for Wachhund_95:
(Start: 58 @50439 has 123 MA's), (86, 50667), (110, 50829),

Gene: Wee_101 Start: 55069, Stop: 55482, Start Num: 58
Candidate Starts for Wee_101:
(Start: 58 @55069 has 123 MA's), (86, 55297), (98, 55402), (110, 55459),

Gene: Whatsapiecost_92 Start: 48794, Stop: 49207, Start Num: 58
Candidate Starts for Whatsapiecost_92:
(42, 48701), (47, 48749), (Start: 58 @48794 has 123 MA's), (86, 49022), (98, 49127), (110, 49184),

Gene: Wildflower_25 Start: 11300, Stop: 11734, Start Num: 60
Candidate Starts for Wildflower_25:
(Start: 60 @11300 has 28 MA's), (66, 11354), (69, 11390), (70, 11393), (72, 11402), (75, 11420), (76, 11432), (77, 11441), (78, 11444), (93, 11585), (101, 11627), (103, 11654), (104, 11657),

Gene: WillSterrel_96 Start: 53837, Stop: 54238, Start Num: 62
Candidate Starts for WillSterrel_96:
(6, 53423), (20, 53570), (41, 53732), (45, 53771), (Start: 55 @53822 has 2 MA's), (Start: 58 @53825 has 123 MA's), (Start: 62 @53837 has 85 MA's), (86, 54053), (110, 54215),

Gene: Winget_25 Start: 11319, Stop: 11753, Start Num: 60
Candidate Starts for Winget_25:
(Start: 60 @11319 has 28 MA's), (66, 11373), (69, 11409), (70, 11412), (72, 11421), (75, 11439), (76, 11451), (77, 11460), (78, 11463), (93, 11604), (101, 11646), (103, 11673), (104, 11676),

Gene: XFactor_89 Start: 51585, Stop: 51998, Start Num: 58
Candidate Starts for XFactor_89:
(Start: 58 @51585 has 123 MA's), (86, 51813), (98, 51918), (110, 51975),

Gene: Xeno_67 Start: 41282, Stop: 41680, Start Num: 61
Candidate Starts for Xeno_67:
(Start: 39 @41129 has 4 MA's), (Start: 44 @41210 has 1 MA's), (Start: 48 @41225 has 17 MA's), (49, 41231), (Start: 61 @41282 has 26 MA's), (75, 41399), (82, 41462), (103, 41636),

Gene: Xerxes_70 Start: 42536, Stop: 42991, Start Num: 48
Candidate Starts for Xerxes_70:

(Start: 39 @42440 has 4 MA's), (Start: 48 @42536 has 17 MA's), (Start: 61 @42593 has 26 MA's),
(Start: 71 @42686 has 1 MA's), (75, 42710), (103, 42947),

Gene: Xula_69 Start: 44823, Stop: 45251, Start Num: 59

Candidate Starts for Xula_69:

(Start: 59 @44823 has 8 MA's), (66, 44868), (76, 44943), (77, 44955), (93, 45120), (110, 45207),

Gene: Yorick_94 Start: 54886, Stop: 55299, Start Num: 58

Candidate Starts for Yorick_94:

(Start: 58 @54886 has 123 MA's), (86, 55114), (110, 55276),

Gene: YungJamal_27 Start: 11595, Stop: 12029, Start Num: 60

Candidate Starts for YungJamal_27:

(Start: 60 @11595 has 28 MA's), (66, 11649), (69, 11685), (70, 11688), (72, 11697), (75, 11715), (76, 11727), (77, 11736), (78, 11739), (93, 11880), (101, 11922), (103, 11949), (104, 11952),

Gene: Zakhe101_25 Start: 11445, Stop: 11879, Start Num: 60

Candidate Starts for Zakhe101_25:

(Start: 60 @11445 has 28 MA's), (66, 11499), (69, 11535), (70, 11538), (72, 11547), (75, 11565), (76, 11577), (77, 11586), (78, 11589), (93, 11730), (101, 11772), (104, 11802),

Gene: Zebo_23 Start: 11046, Stop: 11480, Start Num: 60

Candidate Starts for Zebo_23:

(Start: 60 @11046 has 28 MA's), (66, 11100), (69, 11136), (70, 11139), (72, 11148), (75, 11166), (76, 11178), (77, 11187), (78, 11190), (93, 11331), (101, 11373), (103, 11400), (104, 11403),

Gene: Zerg_96 Start: 53460, Stop: 53873, Start Num: 58

Candidate Starts for Zerg_96:

(42, 53367), (47, 53415), (Start: 58 @53460 has 123 MA's), (86, 53688), (98, 53793), (110, 53850),

Gene: Zizzle_101 Start: 55536, Stop: 55949, Start Num: 58

Candidate Starts for Zizzle_101:

(Start: 58 @55536 has 123 MA's), (86, 55764), (98, 55869), (110, 55926),