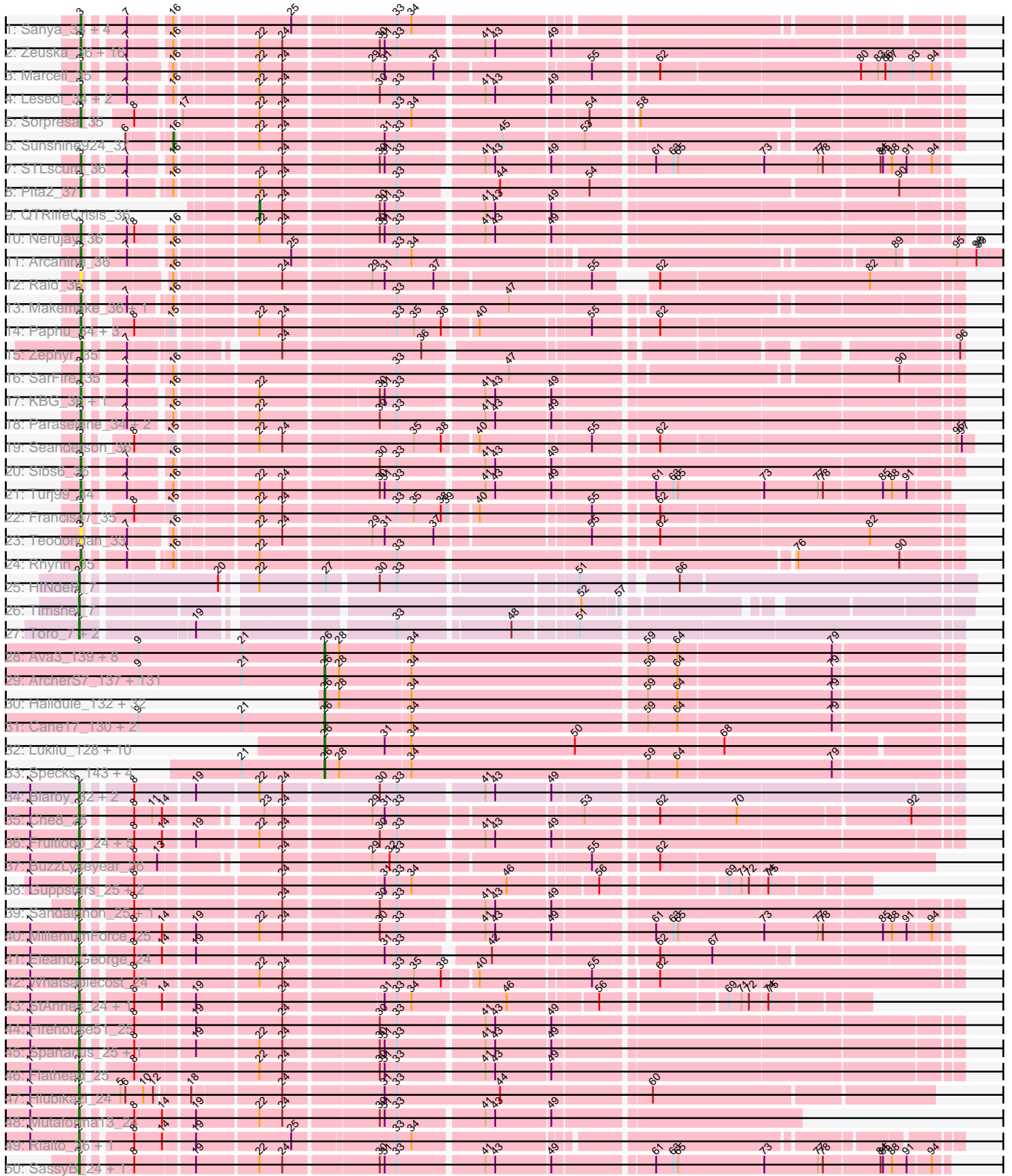
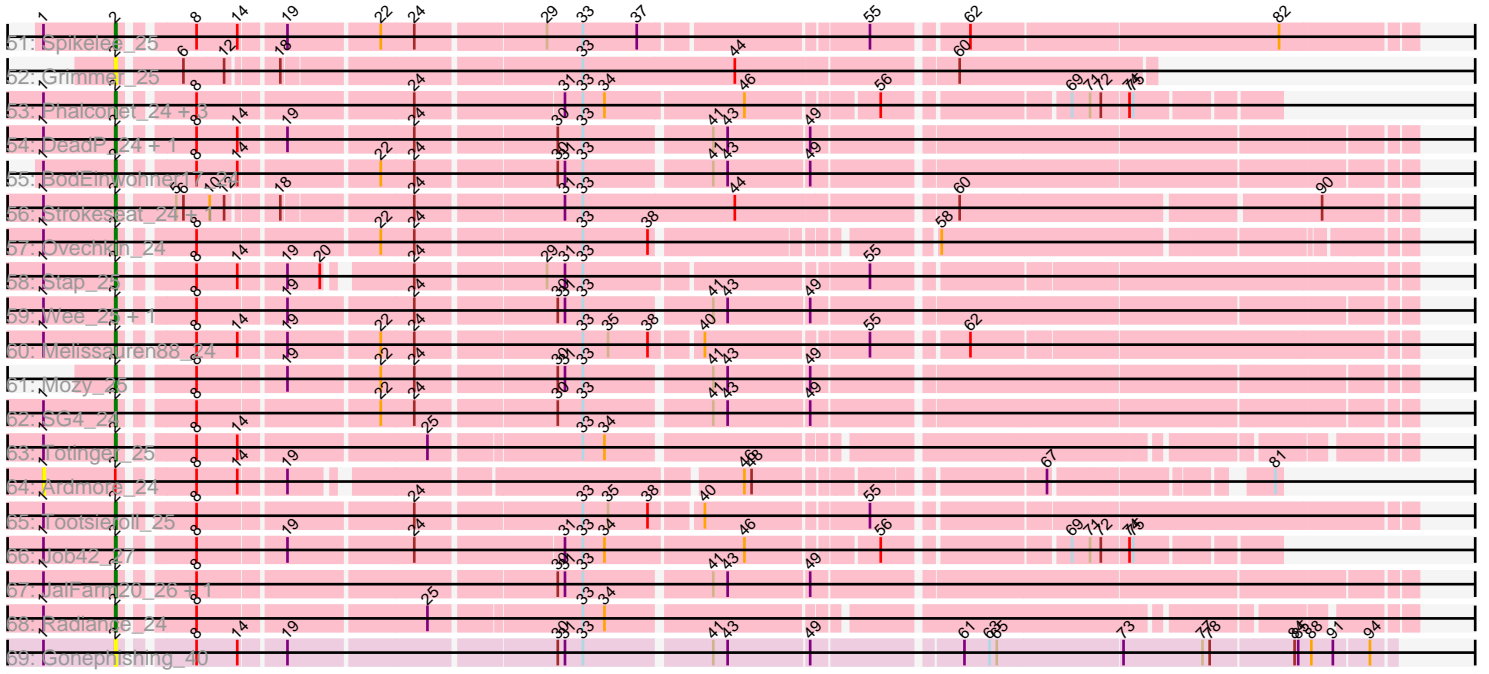


Pham 202615



Pham 202615



Note: Tracks are now grouped by subcluster and scaled. Switching in subcluster is indicated by changes in track color. Track scale is now set by default to display the region 30 bp upstream of start 1 to 30 bp downstream of the last possible start. If this default region is judged to be packed too tightly with annotated starts, the track will be further scaled to only show that region of the ORF with annotated starts. This action will be indicated by adding "Zoomed" to the title. For starts, yellow indicates the location of called starts comprised solely of Glimmer/GeneMark auto-annotations, green indicates the location of called starts with at least 1 manual gene annotation.

Pham 202615 Report

This analysis was run 01/18/25 on database version 583.

Pham number 202615 has 308 members, 35 are drafts.

Phages represented in each track:

- Track 1 : Sanya_34, Rajelicia_34, Snazzy_34, TwoPeat_36, Slagathor_36
- Track 2 : Zeuska_36, Edtherson_36, Magnito_34, Espresso_35, AFIS_35, Monet_37, DD5_36, Rutherford_37, Traft412_37, JackSparrow_36, SkiPole_38, NEHalo_35, Trouble_36, SpikeBT_37, Perseus_37, BillKnuckles_36, Ohno789_35
- Track 3 : Marcell_35
- Track 4 : Lesedi_34, Marge_36, Abrogate_360
- Track 5 : Sorpresa_35
- Track 6 : Sunshine924_37
- Track 7 : STLscum_36
- Track 8 : Pita2_37
- Track 9 : QTRlifeCrisis_36
- Track 10 : Nerujay_36
- Track 11 : Arcanine_36
- Track 12 : Raid_36
- Track 13 : Makemake_36, ConceptII_37
- Track 14 : Paphu_34, Adahisdi_36, Kugel_36, Ashballer_37
- Track 15 : Zephyr_35
- Track 16 : SarFire_35
- Track 17 : KBG_36, Treddle_37
- Track 18 : Paraselene_34, Magnar_35, BPBiebs31_36
- Track 19 : Seanderson_36
- Track 20 : Sibs6_36
- Track 21 : Turj99_34
- Track 22 : Francis47_35
- Track 23 : Teodoridan_33
- Track 24 : Rhynn_35
- Track 25 : HINdeR_7
- Track 26 : Timshel_7
- Track 27 : Toro_7, Sheen_7, FlyCatcher_8
- Track 28 : Ava3_139, DrPhinkDaddy_137, ZygoTaiga_136, FoxtrotP1_138, Ewok_139, Kamryn_138, Nidhogg_140, Jezreel_136, Lethe_138
- Track 29 : ArcherS7_137, Delilah_138, EasyJones_141, NedWong_139, Maby2021_138, StubbySaigey_142, Dandelion_143, Cactojaque_134, Iota_133, EmToTheThree_140, Bipolarisk_137, Pleione_141, Momo_138, Domi_131, Alice_131, TinyTim_138, NoodleTree_145, EmmaElysia_139, DirtMonster_132, Mangeria_138, Willis_139, Tyke_138, Gamgam_139, BigCity_146, Yucca_137, FrayBell_143, Bxz1_135, Belieber_134, Sprinklers_134, JPickles_135, Ablatia_137,

Wally_137, Chargie21_135, Demodog_145, Erdmann_138, Bangla1971_139, Atlantean_138, BackyardAgain_135, Capablanca_141, Grasshills_145, Ading_138, PurduePete_138, SrishMeg2525_137, EggyFarm_146, Jessibeth14_137, ParkTD_139, Lee7_136, McWolfish_136, Latch_139, IkeLoa_132, Phlegm_142, StephanieG_136, GlutenPhree_138, ValleyTerrace_139, Drazdys_136, Roots515_137, Daffodil_143, Kboogie_142, Matsumoto_135, Rabinovish_137, SilverDipper_140, Caravan_132, Bigswole_141, Chomp_138, BeanWater_130, Pivoine_138, Stubby_131, NuevoMundo_143, Morizzled23_139, LordLeafolot_142, Pio_142, Tortoise16_135, Amataga_139, Gizmo_143, Shelob_140, Fludd_139, Loanshark_137, Tainan_141, Burrough_138, Audrick_141, Phox_135, Norm_139, RoMag_133, Yassified_135, Littleton_138, Breeniome_137, MikeLiesIn_139, Megamind_137, Patter_139, Cali_133, McGee_140, Rahel_137, Bread_137, Babyland_140, Darko_138, LolaVinca_138, Khaleesi_137, Ngannou_135, Issimir_136, ChickenPhender_134, I3_143, Shrimp_138, Janiyra_141, BadAgartude_134, YemiJoy2021_139, Naval22_143, Turret_134, JigglyPuff_146, Basquiat_135, Ghost_137, MoMoMixon_138, Dietrick_130, Rizal_133, Phusco_138, Zalkecks_139, Zeenon_139, Concombre_144, FudgeTart_136, Shaqnato_131, Izajani_138, Gabriel_138, InigoMontoya_141, ET08_126, Pier_142, Naija_138, Salacia_142, Nappy_140, Asterius_135, Catera_134, Delylah_141, Mikro_135, SVoro_136

- Track 30 : Halldule_132, Essence_135, Derek_137, Jemmno_138, Jaygup_138, ScottMcG_134, Spud_137, Trinitium_136, DTDevon_138, YoungMoneyMata_140, Jedediah_141, ChaylaJr_134, Bonray_139, CindyLou_140, Adlitam_139, JulietS_133, Guwapp_137, ShiaLabeouf_137, Ronan_132, JayJay_138, JustHall_136, Flabslab_133, Shnickers_138, Napoleon13_134, SmallFry_138, QBert_132, CharlieB_135, Blackbrain_134, Quasimodo_140, ErnieJ_132, LifeSavor_136, Melpomini_132, Spec_134

- Track 31 : Cane17_130, Blubba_130, Colt_130

- Track 32 : Lukilu_128, Grungle_125, LRRHood_131, Blackdragon_134, Koguma_135, Sebata_138, HyRo_129, LinStu_136, Sauce_138, Shifa_127, Pinkcreek_129

- Track 33 : Specks_143, InterFolia_144, Astraea_134, Teardrop_137, BananaFence_137

- Track 34 : Blarby_32, Tweety_25, Wachhund_24

- Track 35 : Che8_25

- Track 36 : Fruitloop_24, XFactor_24, Brushbloom_26, Seagreen_25, Juice456_26, Hegedechwinu_25

- Track 37 : BuzzLyseyear_26

- Track 38 : Guppsters_25, Sabbb_25, Minerva_45

- Track 39 : Sandalphon_25, Minnie_25

- Track 40 : MilleniumForce_25

- Track 41 : EleanorGeorge_24

- Track 42 : Whatsapiecost_24

- Track 43 : StAnnes_24, IMpilo_24

- Track 44 : Firehouse51_25

- Track 45 : Spartacus_25, KristaRAM_25

- Track 46 : Flathead_25

- Track 47 : Hlubikazi_24

- Track 48 : Mutaforma13_24

- Track 49 : Rialto_26, LittleShirley_25

- Track 50 : SassyB_24, PopTart_24

- Track 51 : Spikelee_25

- Track 52 : Grimmer_25

- Track 53 : Phalconet_24, Beakin_25, VRedHorse_24, Dante_24
- Track 54 : DeadP_24, Taj_24
- Track 55 : BodEinwohner17_24
- Track 56 : Strokeseat_24, Mandlovu_24
- Track 57 : Ovechkin_24
- Track 58 : Stap_25
- Track 59 : Wee_25, Omega_44
- Track 60 : Melissauren88_24
- Track 61 : Mozy_25
- Track 62 : SG4_24
- Track 63 : Totinger_25
- Track 64 : Ardmore_24
- Track 65 : Tootsieroll_25
- Track 66 : Job42_27
- Track 67 : JalFarm20_26, Bobi_26
- Track 68 : Radiance_24
- Track 69 : Gonephishing_40

Summary of Final Annotations (See graph section above for start numbers):

The start number called the most often in the published annotations is 26, it was called in 169 of the 273 non-draft genes in the pham.

Genes that call this "Most Annotated" start:

- Ablatia_137, Ading_138, Adlitam_139, Alice_131, Amataga_139, ArcherS7_137, Asterius_135, Astraea_134, Atlantean_138, Audrick_141, Ava3_139, Babyland_140, BackyardAgain_135, BadAgartude_134, BananaFence_137, Bangla1971_139, Basquiat_135, BeanWater_130, Belieber_134, BigCity_146, Bigswole_141, Bipolarisk_137, Blackbrain_134, Blackdragon_134, Blubba_130, Bonray_139, Bread_137, Breeniome_137, Burrough_138, Bxz1_135, Cactojaque_134, Cali_133, Cane17_130, Capablanca_141, Caravan_132, Catera_134, Chargie21_135, CharlieB_135, ChaylaJr_134, ChickenPhender_134, Chomp_138, CindyLou_140, Colt_130, Concombre_144, DTDevon_138, Daffodil_143, Dandelion_143, Darko_138, Delilah_138, Delylah_141, Demodog_145, Derek_137, Dietrick_130, DirtMonster_132, Domi_131, DrPhinkDaddy_137, Drazdys_136, ET08_126, EasyJones_141, EggyFarm_146, EmToTheThree_140, EmmaElysia_139, Erdmann_138, ErnieJ_132, Essence_135, Ewok_139, Flabslab_133, Fludd_139, FoxtrotP1_138, FrayBell_143, FudgeTart_136, Gabriel_138, Gamgam_139, Ghost_137, Gizmo_143, GlutenPhree_138, Grasshills_145, Grungle_125, Guwapp_137, Halldule_132, HyRo_129, I3_143, IkeLoa_132, InigoMontoya_141, InterFolia_144, Iota_133, Issimir_136, Izajani_138, JPickles_135, Janiyra_141, JayJay_138, Jaygup_138, Jediah_141, Jemmno_138, Jessibeth14_137, Jezreel_136, JigglyPuff_146, JulietS_133, JustHall_136, Kamryn_138, Kboogie_142, Khaleesi_137, Koguma_135, LRRHood_131, Latch_139, Lee7_136, Lethe_138, LifeSavor_136, LinStu_136, Littleton_138, Loanshark_137, LolaVinca_138, LordLeafolot_142, Lukilu_128, Maby2021_138, Mangeria_138, Matsumoto_135, McGee_140, McWolfish_136, Megamind_137, Melpomini_132, MikeLiesIn_139, Mikro_135, MoMoMixon_138, Momo_138, Morizzled23_139, Naija_138, Napoleon13_134, Nappy_140, Naval22_143, NedWong_139, Ngannou_135, Nidhogg_140, NoodleTree_145, Norm_139, NuevoMundo_143, ParkTD_139,

Patter_139, Phlegm_142, Phox_135, Phusco_138, Pier_142, Pinkcreek_129, Pio_142, Pivoine_138, Pleione_141, PurduePete_138, QBert_132, Quasimodo_140, Rabinovish_137, Rahel_137, Rizal_133, RoMag_133, Ronan_132, Roots515_137, SVoro_136, Salacia_142, Sauce_138, ScottMcG_134, Sebata_138, Shaqnato_131, Shelob_140, ShiaLabeouf_137, Shifa_127, Shnickers_138, Shrimp_138, SilverDipper_140, SmallFry_138, Spec_134, Specks_143, Sprinklers_134, Spud_137, SrishMeg2525_137, StephanieG_136, StubbySaigey_142, Stubby_131, Tainan_141, Teardrop_137, TinyTim_138, Tortoise16_135, Trinitium_136, Turret_134, Tyke_138, ValleyTerrace_139, Wally_137, Willis_139, Yassified_135, YemiJoy2021_139, YoungMoneyMata_140, Yucca_137, Zalkecks_139, Zeenon_139, ZygoTaiga_136,

Genes that have the "Most Annotated" start but do not call it:

-

Genes that do not have the "Most Annotated" start:

- AFIS_35, Abrogate_360, Adahisdi_36, Arcanine_36, Ardmore_24, Ashballer_37, BPBiabs31_36, Beakin_25, BillKnuckles_36, Blarby_32, Bobi_26, BodEinwohner17_24, Brushbloom_26, BuzzLyseyear_26, Che8_25, ConceptII_37, DD5_36, Dante_24, DeadP_24, Edtherson_36, EleanorGeorge_24, Espresso_35, Firehouse51_25, Flathead_25, FlyCatcher_8, Francis47_35, Fruitloop_24, Gonephishing_40, Grimmer_25, Guppsters_25, HINdeR_7, Hegedechwinu_25, Hlubikazi_24, IMpilo_24, JackSparrow_36, JalFarm20_26, Job42_27, Juice456_26, KBG_36, KristaRAM_25, Kugel_36, Lesedi_34, LittleShirley_25, Magnar_35, Magnito_34, Makemake_36, Mandlovu_24, Marcell_35, Marge_36, Melissauren88_24, MilleniumForce_25, Minerva_45, Minnie_25, Monet_37, Mozy_25, Mutaforma13_24, NEHalo_35, Nerujay_36, Ohno789_35, Omega_44, Ovechkin_24, Paphu_34, Paraselene_34, Perseus_37, Phalconet_24, Pita2_37, PopTart_24, QTRLifeCrisis_36, Radiance_24, Raid_36, Rajelicia_34, Rhynn_35, Rialto_26, Rutherferd_37, SG4_24, STLscum_36, Sabbb_25, Sandalphon_25, Sanya_34, SarFire_35, SassyB_24, Seagreen_25, Seanderson_36, Sheen_7, Sibs6_36, SkiPole_38, Slagathor_36, Snazzy_34, Sorpresa_35, Spartacus_25, SpikeBT_37, Spikelee_25, StAnnes_24, Stap_25, Strokeseat_24, Sunshine924_37, Taj_24, Teodoridan_33, Timshel_7, Tootsieroll_25, Toro_7, Totinger_25, Traft412_37, Treddle_37, Trouble_36, Turj99_34, Tweety_25, TwoPeat_36, VRedHorse_24, Wachhund_24, Wee_25, Whatsapiecost_24, XFactor_24, Zephyr_35, Zeuska_36,

Summary by start number:

Start 1:

- Found in 51 of 308 (16.6%) of genes in pham
- No Manual Annotations of this start.
- Called 2.0% of time when present
- Phage (with cluster) where this start called: Ardmore_24 (F1),

Start 2:

- Found in 62 of 308 (20.1%) of genes in pham
- Manual Annotations of this start: 54 of 273
- Called 98.4% of time when present
- Phage (with cluster) where this start called: Beakin_25 (F1), Blarby_32 (F), Bobi_26 (F1), BodEinwohner17_24 (F1), Brushbloom_26 (F1), BuzzLyseyear_26 (F1), Che8_25 (F1), Dante_24 (F1), DeadP_24 (F1), EleanorGeorge_24 (F1), Firehouse51_25 (F1), Flathead_25 (F1), FlyCatcher_8 (A7), Fruitloop_24 (F1),

Gonephishing_40 (J), Grimmer_25 (F1), Guppsters_25 (F1), HINder_7 (A7), Hegedechwinu_25 (F1), Hlubikazi_24 (F1), IMpilo_24 (F1), JalFarm20_26 (F1), Job42_27 (F1), Juice456_26 (F1), KristaRAM_25 (F1), LittleShirley_25 (F1), Mandlovu_24 (F1), Melissauren88_24 (F1), MilleniumForce_25 (F1), Minerva_45 (J), Minnie_25 (F1), Mozy_25 (F1), Mutaforma13_24 (F1), Omega_44 (J), Ovechkin_24 (F1), Phalconet_24 (F1), PopTart_24 (F1), Radiance_24 (F1), Rialto_26 (F1), SG4_24 (F1), Sabbb_25 (F1), Sandalphon_25 (F1), SassyB_24 (F1), Seagreen_25 (F1), Sheen_7 (A7), Spartacus_25 (F1), Spikelee_25 (F1), StAnnes_24 (F1), Stap_25 (F1), Strokeseat_24 (F1), Taj_24 (F1), Timshel_7 (A7), Tootsieroll_25 (F1), Toro_7 (A7), Totinger_25 (F1), Tweety_25 (F1), VRedHorse_24 (F1), Wachhund_24 (F1), Wee_25 (F1), Whatsapiecost_24 (F1), XFactor_24 (F1),

Start 3:

- Found in 50 of 308 (16.2%) of genes in pham
- Manual Annotations of this start: 47 of 273
- Called 100.0% of time when present
- Phage (with cluster) where this start called: AFIS_35 (A1), Abrogate_360 (A1), Adahisdi_36 (A1), Arcanine_36 (A1), Ashballer_37 (A1), BPBiabs31_36 (A1), BillKnuckles_36 (A1), Conceptll_37 (A1), DD5_36 (A1), Edtherson_36 (A1), Espresso_35 (A1), Francis47_35 (A1), JackSparrow_36 (A1), KBG_36 (A1), Kugel_36 (A1), Lesedi_34 (A1), Magnar_35 (A1), Magnito_34 (A1), Makemake_36 (A1), Marcell_35 (A1), Marge_36 (A1), Monet_37 (A1), NEHalo_35 (A1), Nerujay_36 (A1), Ohno789_35 (A1), Paphu_34 (A1), Paraselene_34 (A1), Perseus_37 (A1), Pita2_37 (A1), Raid_36 (A1), Rajelicia_34 (A1), Rhynn_35 (A1), Rutherford_37 (A1), STLscum_36 (A1), Sanya_34 (A1), SarFire_35 (A1), Seanderson_36 (A1), Sibs6_36 (A1), SkiPole_38 (A1), Slagathor_36 (A1), Snazzy_34 (A1), Sorpresa_35 (A1), SpikeBT_37 (A1), Teodoridan_33 (A1), Traft412_37 (A1), Treddle_37 (A1), Trouble_36 (A1), Turj99_34 (A1), TwoPeat_36 (A1), Zeuska_36 (A1),

Start 4:

- Found in 1 of 308 (0.3%) of genes in pham
- Manual Annotations of this start: 1 of 273
- Called 100.0% of time when present
- Phage (with cluster) where this start called: Zephyr_35 (A1),

Start 16:

- Found in 44 of 308 (14.3%) of genes in pham
- Manual Annotations of this start: 1 of 273
- Called 2.3% of time when present
- Phage (with cluster) where this start called: Sunshine924_37 (A1),

Start 22:

- Found in 64 of 308 (20.8%) of genes in pham
- Manual Annotations of this start: 1 of 273
- Called 1.6% of time when present
- Phage (with cluster) where this start called: QTRlifeCrisis_36 (A1),

Start 26:

- Found in 193 of 308 (62.7%) of genes in pham
- Manual Annotations of this start: 169 of 273
- Called 100.0% of time when present
- Phage (with cluster) where this start called: Ablatia_137 (C1), Ading_138 (C1), Adlitam_139 (C1), Alice_131 (C1), Amataga_139 (C1), ArcherS7_137 (C1),

Asterius_135 (C1), Astraea_134 (C1), Atlantean_138 (C1), Audrick_141 (C1),
 Ava3_139 (C1), Babyland_140 (C1), BackyardAgain_135 (C1), BadAgartude_134
 (C1), BananaFence_137 (C1), Bangla1971_139 (C1), Basquiat_135 (C1),
 BeanWater_130 (C1), Belieber_134 (C1), BigCity_146 (C1), Bigswole_141 (C1),
 Bipolarisk_137 (C1), Blackbrain_134 (C1), Blackdragon_134 (C1), Blubba_130 (C1),
 Bonray_139 (C1), Bread_137 (C1), Breeniome_137 (C1), Burrough_138 (C1),
 Bxz1_135 (C1), Cactojaque_134 (C1), Cali_133 (C1), Cane17_130 (C1),
 Capablanca_141 (C1), Caravan_132 (C1), Catera_134 (C1), Chargie21_135 (C1),
 CharlieB_135 (C1), ChaylaJr_134 (C1), ChickenPhender_134 (C1), Chomp_138
 (C1), CindyLou_140 (C1), Colt_130 (C1), Concombre_144 (C1), DTDevon_138 (C1),
 Daffodil_143 (C1), Dandelion_143 (C1), Darko_138 (C1), Delilah_138 (C1),
 Delylah_141 (C1), Demodog_145 (C1), Derek_137 (C1), Dietrick_130 (C1),
 DirtMonster_132 (C1), Domi_131 (C1), DrPhinkDaddy_137 (C1), Drazdys_136 (C1),
 ET08_126 (C1), EasyJones_141 (C1), EggyFarm_146 (C1), EmToTheThree_140
 (C1), EmmaElysia_139 (C1), Erdmann_138 (C1), ErnieJ_132 (C1), Essence_135
 (C1), Ewok_139 (C1), Flabslab_133 (C1), Fludd_139 (C1), FoxtrotP1_138 (C1),
 FrayBell_143 (C1), FudgeTart_136 (C1), Gabriel_138 (C1), Gamgam_139 (C1),
 Ghost_137 (C1), Gizmo_143 (C1), GlutenPhree_138 (C1), Grasshills_145 (C1),
 Grungle_125 (C1), Guwapp_137 (C1), Halldule_132 (C1), HyRo_129 (C1), I3_143
 (C1), IkeLoa_132 (C1), InigoMontoya_141 (C1), InterFolia_144 (C1), Iota_133 (C1),
 Issimir_136 (C1), Izajani_138 (C1), JPickles_135 (C1), Janiyra_141 (C1), JayJay_138
 (C1), Jaygup_138 (C1), Jediah_141 (C1), Jemmno_138 (C1), Jessibeth14_137
 (C1), Jezreel_136 (C1), JigglyPuff_146 (C1), JulietS_133 (C1), JustHall_136 (C1),
 Kamryn_138 (C1), Kboogie_142 (C1), Khaleesi_137 (C1), Koguma_135 (C1),
 LRRHood_131 (C1), Latch_139 (C1), Lee7_136 (C1), Lethe_138 (C1), LifeSavor_136
 (C1), LinStu_136 (C1), Littleton_138 (C1), Loanshark_137 (C1), LolaVinca_138 (C1),
 LordLeafolot_142 (C1), Lukilu_128 (C1), Maby2021_138 (C1), Mangeria_138 (C1),
 Matsumoto_135 (C1), McGee_140 (C1), McWolfish_136 (C1), Megamind_137 (C1),
 Melpomini_132 (C1), MikeLiesIn_139 (C1), Mikro_135 (C1), MoMoMixon_138 (C1),
 Momo_138 (C1), Morizzled23_139 (C1), Naija_138 (C1), Napoleon13_134 (C1),
 Nappy_140 (C1), Naval22_143 (C1), NedWong_139 (C1), Ngannou_135 (C1),
 Nidhogg_140 (C1), NoodleTree_145 (C1), Norm_139 (C1), NuevoMundo_143 (C1),
 ParkTD_139 (C1), Patter_139 (C1), Phlegm_142 (C1), Phox_135 (C1), Phusco_138
 (C1), Pier_142 (C1), Pinkcreek_129 (C1), Pio_142 (C1), Pivoine_138 (C1),
 Pleione_141 (C1), PurduePete_138 (C1), QBert_132 (C1), Quasimodo_140 (C1),
 Rabinovish_137 (C1), Rahel_137 (C1), Rizal_133 (C1), RoMag_133 (C1),
 Ronan_132 (C1), Roots515_137 (C1), SVoro_136 (C1), Salacia_142 (C1),
 Sauce_138 (C1), ScottMcG_134 (C1), Sebata_138 (C1), Shaqnato_131 (C1),
 Shelob_140 (C1), ShiaLabeouf_137 (C1), Shifa_127 (C1), Shnickers_138 (C1),
 Shrimp_138 (C1), SilverDipper_140 (C1), SmallFry_138 (C1), Spec_134 (C1),
 Specks_143 (C1), Sprinklers_134 (C1), Spud_137 (C1), SrishMeg2525_137 (C1),
 StephanieG_136 (C1), StubbySaigey_142 (C1), Stubby_131 (C1), Tainan_141 (C1),
 Teardrop_137 (C1), TinyTim_138 (C1), Tortoise16_135 (C1), Trinitium_136 (C1),
 Turret_134 (C1), Tyke_138 (C1), ValleyTerrace_139 (C1), Wally_137 (C1), Willis_139
 (C1), Yassified_135 (C1), YemiJoy2021_139 (C1), YoungMoneyMata_140 (C1),
 Yucca_137 (C1), Zalkecks_139 (C1), Zeenon_139 (C1), ZygoTaiga_136 (C1),

Summary by clusters:

There are 6 clusters represented in this pham: F1, F, J, A1, A7, C1,

Info for manual annotations of cluster A1:

- Start number 3 was manually annotated 47 times for cluster A1.

- Start number 4 was manually annotated 1 time for cluster A1.
- Start number 16 was manually annotated 1 time for cluster A1.
- Start number 22 was manually annotated 1 time for cluster A1.

Info for manual annotations of cluster A7:

- Start number 2 was manually annotated 3 times for cluster A7.

Info for manual annotations of cluster C1:

- Start number 26 was manually annotated 169 times for cluster C1.

Info for manual annotations of cluster F1:

- Start number 2 was manually annotated 49 times for cluster F1.

Info for manual annotations of cluster J:

- Start number 2 was manually annotated 2 times for cluster J.

Gene Information:

Gene: AFIS_35 Start: 28138, Stop: 29097, Start Num: 3

Candidate Starts for AFIS_35:

(Start: 3 @28138 has 47 MA's), (7, 28174), (Start: 16 @28216 has 1 MA's), (Start: 22 @28303 has 1 MA's), (24, 28330), (30, 28438), (31, 28444), (33, 28459), (41, 28558), (43, 28570), (49, 28633),

Gene: Ablatia_137 Start: 79628, Stop: 80383, Start Num: 26

Candidate Starts for Ablatia_137:

(9, 79400), (21, 79526), (Start: 26 @79628 has 169 MA's), (28, 79646), (34, 79730), (59, 80012), (64, 80048), (79, 80234),

Gene: Abrogate_360 Start: 28813, Stop: 29772, Start Num: 3

Candidate Starts for Abrogate_360:

(Start: 3 @28813 has 47 MA's), (7, 28849), (Start: 16 @28891 has 1 MA's), (Start: 22 @28978 has 1 MA's), (24, 29005), (30, 29113), (33, 29134), (41, 29233), (43, 29245), (49, 29308),

Gene: Adahisdi_36 Start: 28227, Stop: 29183, Start Num: 3

Candidate Starts for Adahisdi_36:

(Start: 3 @28227 has 47 MA's), (8, 28263), (15, 28305), (Start: 22 @28392 has 1 MA's), (24, 28419), (33, 28548), (35, 28569), (38, 28602), (40, 28638), (55, 28764), (62, 28833),

Gene: Ading_138 Start: 79597, Stop: 80352, Start Num: 26

Candidate Starts for Ading_138:

(9, 79369), (21, 79495), (Start: 26 @79597 has 169 MA's), (28, 79615), (34, 79699), (59, 79981), (64, 80017), (79, 80203),

Gene: Adlitam_139 Start: 80093, Stop: 80848, Start Num: 26

Candidate Starts for Adlitam_139:

(Start: 26 @80093 has 169 MA's), (28, 80111), (34, 80195), (59, 80477), (64, 80513), (79, 80699),

Gene: Alice_131 Start: 79318, Stop: 80073, Start Num: 26

Candidate Starts for Alice_131:

(9, 79090), (21, 79216), (Start: 26 @79318 has 169 MA's), (28, 79336), (34, 79420), (59, 79702), (64, 79738), (79, 79924),

Gene: Amataga_139 Start: 79338, Stop: 80093, Start Num: 26

Candidate Starts for Amataga_139:

(9, 79110), (21, 79236), (Start: 26 @79338 has 169 MA's), (28, 79356), (34, 79440), (59, 79722), (64, 79758), (79, 79944),

Gene: Arcanine_36 Start: 27784, Stop: 28773, Start Num: 3

Candidate Starts for Arcanine_36:

(Start: 3 @27784 has 47 MA's), (7, 27820), (Start: 16 @27862 has 1 MA's), (25, 27985), (33, 28102), (34, 28120), (89, 28639), (95, 28705), (98, 28729), (99, 28732),

Gene: ArcherS7_137 Start: 79177, Stop: 79932, Start Num: 26

Candidate Starts for ArcherS7_137:

(9, 78949), (21, 79075), (Start: 26 @79177 has 169 MA's), (28, 79195), (34, 79279), (59, 79561), (64, 79597), (79, 79783),

Gene: Ardmore_24 Start: 24249, Stop: 25115, Start Num: 1

Candidate Starts for Ardmore_24:

(1, 24249), (Start: 2 @24309 has 54 MA's), (8, 24357), (14, 24390), (19, 24423), (46, 24753), (48, 24759), (67, 24963), (81, 25110),

Gene: Ashballer_37 Start: 28784, Stop: 29740, Start Num: 3

Candidate Starts for Ashballer_37:

(Start: 3 @28784 has 47 MA's), (8, 28820), (15, 28862), (Start: 22 @28949 has 1 MA's), (24, 28976), (33, 29105), (35, 29126), (38, 29159), (40, 29195), (55, 29321), (62, 29390),

Gene: Asterius_135 Start: 79853, Stop: 80608, Start Num: 26

Candidate Starts for Asterius_135:

(9, 79625), (21, 79751), (Start: 26 @79853 has 169 MA's), (28, 79871), (34, 79955), (59, 80237), (64, 80273), (79, 80459),

Gene: Astraea_134 Start: 78618, Stop: 79373, Start Num: 26

Candidate Starts for Astraea_134:

(21, 78516), (Start: 26 @78618 has 169 MA's), (28, 78636), (34, 78720), (59, 79002), (64, 79038), (79, 79224),

Gene: Atlantean_138 Start: 79338, Stop: 80093, Start Num: 26

Candidate Starts for Atlantean_138:

(9, 79110), (21, 79236), (Start: 26 @79338 has 169 MA's), (28, 79356), (34, 79440), (59, 79722), (64, 79758), (79, 79944),

Gene: Audrick_141 Start: 79317, Stop: 80072, Start Num: 26

Candidate Starts for Audrick_141:

(9, 79089), (21, 79215), (Start: 26 @79317 has 169 MA's), (28, 79335), (34, 79419), (59, 79701), (64, 79737), (79, 79923),

Gene: Ava3_139 Start: 79762, Stop: 80517, Start Num: 26

Candidate Starts for Ava3_139:

(9, 79534), (21, 79660), (Start: 26 @79762 has 169 MA's), (28, 79780), (34, 79864), (59, 80146), (64, 80182), (79, 80368),

Gene: BPBiabs31_36 Start: 28355, Stop: 29314, Start Num: 3

Candidate Starts for BPBiabs31_36:

(Start: 3 @28355 has 47 MA's), (7, 28391), (Start: 16 @28433 has 1 MA's), (Start: 22 @28520 has 1 MA's), (30, 28655), (33, 28676), (41, 28775), (43, 28787), (49, 28850),

Gene: Babyland_140 Start: 79416, Stop: 80171, Start Num: 26

Candidate Starts for Babyland_140:

(9, 79188), (21, 79314), (Start: 26 @79416 has 169 MA's), (28, 79434), (34, 79518), (59, 79800), (64, 79836), (79, 80022),

Gene: BackyardAgain_135 Start: 78765, Stop: 79520, Start Num: 26

Candidate Starts for BackyardAgain_135:

(9, 78537), (21, 78663), (Start: 26 @78765 has 169 MA's), (28, 78783), (34, 78867), (59, 79149), (64, 79185), (79, 79371),

Gene: BadAgartude_134 Start: 80064, Stop: 80819, Start Num: 26

Candidate Starts for BadAgartude_134:

(9, 79836), (21, 79962), (Start: 26 @80064 has 169 MA's), (28, 80082), (34, 80166), (59, 80448), (64, 80484), (79, 80670),

Gene: BananaFence_137 Start: 80018, Stop: 80773, Start Num: 26

Candidate Starts for BananaFence_137:

(21, 79916), (Start: 26 @80018 has 169 MA's), (28, 80036), (34, 80120), (59, 80402), (64, 80438), (79, 80624),

Gene: Bangla1971_139 Start: 79307, Stop: 80062, Start Num: 26

Candidate Starts for Bangla1971_139:

(9, 79079), (21, 79205), (Start: 26 @79307 has 169 MA's), (28, 79325), (34, 79409), (59, 79691), (64, 79727), (79, 79913),

Gene: Basquiat_135 Start: 78916, Stop: 79671, Start Num: 26

Candidate Starts for Basquiat_135:

(9, 78688), (21, 78814), (Start: 26 @78916 has 169 MA's), (28, 78934), (34, 79018), (59, 79300), (64, 79336), (79, 79522),

Gene: Beakin_25 Start: 24117, Stop: 24971, Start Num: 2

Candidate Starts for Beakin_25:

(1, 24057), (Start: 2 @24117 has 54 MA's), (8, 24165), (24, 24330), (31, 24444), (33, 24459), (34, 24477), (46, 24588), (56, 24681), (69, 24816), (71, 24831), (72, 24840), (74, 24861), (75, 24864),

Gene: BeanWater_130 Start: 79616, Stop: 80371, Start Num: 26

Candidate Starts for BeanWater_130:

(9, 79388), (21, 79514), (Start: 26 @79616 has 169 MA's), (28, 79634), (34, 79718), (59, 80000), (64, 80036), (79, 80222),

Gene: Belieber_134 Start: 79091, Stop: 79846, Start Num: 26

Candidate Starts for Belieber_134:

(9, 78863), (21, 78989), (Start: 26 @79091 has 169 MA's), (28, 79109), (34, 79193), (59, 79475), (64, 79511), (79, 79697),

Gene: BigCity_146 Start: 82288, Stop: 83043, Start Num: 26

Candidate Starts for BigCity_146:

(9, 82060), (21, 82186), (Start: 26 @82288 has 169 MA's), (28, 82306), (34, 82390), (59, 82672), (64, 82708), (79, 82894),

Gene: Bigswole_141 Start: 81573, Stop: 82328, Start Num: 26

Candidate Starts for Bigswole_141:

(9, 81345), (21, 81471), (Start: 26 @81573 has 169 MA's), (28, 81591), (34, 81675), (59, 81957), (64, 81993), (79, 82179),

Gene: BillKnuckles_36 Start: 28751, Stop: 29710, Start Num: 3

Candidate Starts for BillKnuckles_36:

(Start: 3 @28751 has 47 MA's), (7, 28787), (Start: 16 @28829 has 1 MA's), (Start: 22 @28916 has 1 MA's), (24, 28943), (30, 29051), (31, 29057), (33, 29072), (41, 29171), (43, 29183), (49, 29246),

Gene: Bipolarisk_137 Start: 80030, Stop: 80785, Start Num: 26

Candidate Starts for Bipolarisk_137:

(9, 79802), (21, 79928), (Start: 26 @80030 has 169 MA's), (28, 80048), (34, 80132), (59, 80414), (64, 80450), (79, 80636),

Gene: Blackbrain_134 Start: 78801, Stop: 79556, Start Num: 26

Candidate Starts for Blackbrain_134:

(Start: 26 @78801 has 169 MA's), (28, 78819), (34, 78903), (59, 79185), (64, 79221), (79, 79407),

Gene: Blackdragon_134 Start: 79445, Stop: 80200, Start Num: 26

Candidate Starts for Blackdragon_134:

(Start: 26 @79445 has 169 MA's), (31, 79517), (34, 79547), (50, 79748), (68, 79928),

Gene: Blarby_32 Start: 24541, Stop: 25521, Start Num: 2

Candidate Starts for Blarby_32:

(1, 24481), (Start: 2 @24541 has 54 MA's), (8, 24589), (19, 24655), (Start: 22 @24727 has 1 MA's), (24, 24754), (30, 24862), (33, 24883), (41, 24982), (43, 24994), (49, 25057),

Gene: Blubba_130 Start: 81163, Stop: 81918, Start Num: 26

Candidate Starts for Blubba_130:

(9, 80935), (21, 81061), (Start: 26 @81163 has 169 MA's), (34, 81265), (59, 81547), (64, 81583), (79, 81769),

Gene: Bobi_26 Start: 24854, Stop: 25834, Start Num: 2

Candidate Starts for Bobi_26:

(1, 24794), (Start: 2 @24854 has 54 MA's), (8, 24902), (30, 25175), (31, 25181), (33, 25196), (41, 25295), (43, 25307), (49, 25370),

Gene: BodEinwohner17_24 Start: 24438, Stop: 25418, Start Num: 2

Candidate Starts for BodEinwohner17_24:

(1, 24378), (Start: 2 @24438 has 54 MA's), (8, 24486), (14, 24519), (Start: 22 @24624 has 1 MA's), (24, 24651), (30, 24759), (31, 24765), (33, 24780), (41, 24879), (43, 24891), (49, 24954),

Gene: Bonray_139 Start: 80672, Stop: 81427, Start Num: 26

Candidate Starts for Bonray_139:

(Start: 26 @80672 has 169 MA's), (28, 80690), (34, 80774), (59, 81056), (64, 81092), (79, 81278),

Gene: Bread_137 Start: 79848, Stop: 80603, Start Num: 26

Candidate Starts for Bread_137:

(9, 79620), (21, 79746), (Start: 26 @79848 has 169 MA's), (28, 79866), (34, 79950), (59, 80232), (64, 80268), (79, 80454),

Gene: Breeniome_137 Start: 78206, Stop: 78961, Start Num: 26

Candidate Starts for Breeniome_137:

(9, 77978), (21, 78104), (Start: 26 @78206 has 169 MA's), (28, 78224), (34, 78308), (59, 78590), (64, 78626), (79, 78812),

Gene: Brushbloom_26 Start: 24149, Stop: 25129, Start Num: 2

Candidate Starts for Brushbloom_26:

(1, 24089), (Start: 2 @24149 has 54 MA's), (8, 24197), (14, 24230), (19, 24263), (Start: 22 @24335 has 1 MA's), (24, 24362), (30, 24470), (33, 24491), (41, 24590), (43, 24602), (49, 24665),

Gene: Burrough_138 Start: 80357, Stop: 81112, Start Num: 26

Candidate Starts for Burrough_138:

(9, 80129), (21, 80255), (Start: 26 @80357 has 169 MA's), (28, 80375), (34, 80459), (59, 80741), (64, 80777), (79, 80963),

Gene: BuzzLyseyear_26 Start: 24659, Stop: 25597, Start Num: 2

Candidate Starts for BuzzLyseyear_26:

(1, 24599), (Start: 2 @24659 has 54 MA's), (8, 24707), (13, 24734), (24, 24857), (29, 24956), (32, 24977), (33, 24986), (55, 25202), (62, 25271),

Gene: Bxz1_135 Start: 81560, Stop: 82315, Start Num: 26

Candidate Starts for Bxz1_135:

(9, 81332), (21, 81458), (Start: 26 @81560 has 169 MA's), (28, 81578), (34, 81662), (59, 81944), (64, 81980), (79, 82166),

Gene: Cactojaque_134 Start: 78908, Stop: 79663, Start Num: 26

Candidate Starts for Cactojaque_134:

(9, 78680), (21, 78806), (Start: 26 @78908 has 169 MA's), (28, 78926), (34, 79010), (59, 79292), (64, 79328), (79, 79514),

Gene: Cali_133 Start: 80359, Stop: 81114, Start Num: 26

Candidate Starts for Cali_133:

(9, 80131), (21, 80257), (Start: 26 @80359 has 169 MA's), (28, 80377), (34, 80461), (59, 80743), (64, 80779), (79, 80965),

Gene: Cane17_130 Start: 81221, Stop: 81976, Start Num: 26

Candidate Starts for Cane17_130:

(9, 80993), (21, 81119), (Start: 26 @81221 has 169 MA's), (34, 81323), (59, 81605), (64, 81641), (79, 81827),

Gene: Capablanca_141 Start: 81088, Stop: 81843, Start Num: 26

Candidate Starts for Capablanca_141:

(9, 80860), (21, 80986), (Start: 26 @81088 has 169 MA's), (28, 81106), (34, 81190), (59, 81472), (64, 81508), (79, 81694),

Gene: Caravan_132 Start: 79716, Stop: 80471, Start Num: 26

Candidate Starts for Caravan_132:

(9, 79488), (21, 79614), (Start: 26 @79716 has 169 MA's), (28, 79734), (34, 79818), (59, 80100), (64, 80136), (79, 80322),

Gene: Catera_134 Start: 78623, Stop: 79378, Start Num: 26

Candidate Starts for Catera_134:

(9, 78395), (21, 78521), (Start: 26 @78623 has 169 MA's), (28, 78641), (34, 78725), (59, 79007), (64, 79043), (79, 79229),

Gene: Chargie21_135 Start: 78916, Stop: 79671, Start Num: 26

Candidate Starts for Chargie21_135:

(9, 78688), (21, 78814), (Start: 26 @78916 has 169 MA's), (28, 78934), (34, 79018), (59, 79300), (64, 79336), (79, 79522),

Gene: CharlieB_135 Start: 79242, Stop: 79997, Start Num: 26

Candidate Starts for CharlieB_135:

(Start: 26 @79242 has 169 MA's), (28, 79260), (34, 79344), (59, 79626), (64, 79662), (79, 79848),

Gene: ChaylaJr_134 Start: 78724, Stop: 79479, Start Num: 26

Candidate Starts for ChaylaJr_134:

(Start: 26 @78724 has 169 MA's), (28, 78742), (34, 78826), (59, 79108), (64, 79144), (79, 79330),

Gene: Che8_25 Start: 24293, Stop: 25249, Start Num: 2

Candidate Starts for Che8_25:

(1, 24233), (Start: 2 @24293 has 54 MA's), (8, 24341), (11, 24362), (14, 24374), (23, 24470), (24, 24491), (29, 24590), (31, 24605), (33, 24620), (53, 24827), (62, 24905), (70, 24995), (92, 25193),

Gene: ChickenPhender_134 Start: 78548, Stop: 79303, Start Num: 26

Candidate Starts for ChickenPhender_134:

(9, 78320), (21, 78446), (Start: 26 @78548 has 169 MA's), (28, 78566), (34, 78650), (59, 78932), (64, 78968), (79, 79154),

Gene: Chomp_138 Start: 80627, Stop: 81382, Start Num: 26

Candidate Starts for Chomp_138:

(9, 80399), (21, 80525), (Start: 26 @80627 has 169 MA's), (28, 80645), (34, 80729), (59, 81011), (64, 81047), (79, 81233),

Gene: CindyLou_140 Start: 80667, Stop: 81422, Start Num: 26

Candidate Starts for CindyLou_140:

(Start: 26 @80667 has 169 MA's), (28, 80685), (34, 80769), (59, 81051), (64, 81087), (79, 81273),

Gene: Colt_130 Start: 81338, Stop: 82093, Start Num: 26

Candidate Starts for Colt_130:

(9, 81110), (21, 81236), (Start: 26 @81338 has 169 MA's), (34, 81440), (59, 81722), (64, 81758), (79, 81944),

Gene: ConceptII_37 Start: 28990, Stop: 29907, Start Num: 3

Candidate Starts for ConceptII_37:

(Start: 3 @28990 has 47 MA's), (7, 29026), (Start: 16 @29068 has 1 MA's), (33, 29311), (47, 29437),

Gene: Concombres_144 Start: 82521, Stop: 83276, Start Num: 26

Candidate Starts for Concombres_144:

(9, 82293), (21, 82419), (Start: 26 @82521 has 169 MA's), (28, 82539), (34, 82623), (59, 82905), (64, 82941), (79, 83127),

Gene: DD5_36 Start: 28752, Stop: 29711, Start Num: 3

Candidate Starts for DD5_36:

(Start: 3 @28752 has 47 MA's), (7, 28788), (Start: 16 @28830 has 1 MA's), (Start: 22 @28917 has 1 MA's), (24, 28944), (30, 29052), (31, 29058), (33, 29073), (41, 29172), (43, 29184), (49, 29247),

Gene: DTDevon_138 Start: 80389, Stop: 81144, Start Num: 26

Candidate Starts for DTDevon_138:

(Start: 26 @80389 has 169 MA's), (28, 80407), (34, 80491), (59, 80773), (64, 80809), (79, 80995),

Gene: Daffodil_143 Start: 80330, Stop: 81085, Start Num: 26

Candidate Starts for Daffodil_143:

(9, 80102), (21, 80228), (Start: 26 @80330 has 169 MA's), (28, 80348), (34, 80432), (59, 80714), (64, 80750), (79, 80936),

Gene: Dandelion_143 Start: 82522, Stop: 83277, Start Num: 26

Candidate Starts for Dandelion_143:

(9, 82294), (21, 82420), (Start: 26 @82522 has 169 MA's), (28, 82540), (34, 82624), (59, 82906), (64, 82942), (79, 83128),

Gene: Dante_24 Start: 24282, Stop: 25136, Start Num: 2

Candidate Starts for Dante_24:

(1, 24222), (Start: 2 @24282 has 54 MA's), (8, 24330), (24, 24495), (31, 24609), (33, 24624), (34, 24642), (46, 24753), (56, 24846), (69, 24981), (71, 24996), (72, 25005), (74, 25026), (75, 25029),

Gene: Darko_138 Start: 80022, Stop: 80777, Start Num: 26

Candidate Starts for Darko_138:

(9, 79794), (21, 79920), (Start: 26 @80022 has 169 MA's), (28, 80040), (34, 80124), (59, 80406), (64, 80442), (79, 80628),

Gene: DeadP_24 Start: 24297, Stop: 25277, Start Num: 2

Candidate Starts for DeadP_24:

(1, 24237), (Start: 2 @24297 has 54 MA's), (8, 24345), (14, 24378), (19, 24411), (24, 24510), (30, 24618), (33, 24639), (41, 24738), (43, 24750), (49, 24813),

Gene: Delilah_138 Start: 80484, Stop: 81239, Start Num: 26

Candidate Starts for Delilah_138:

(9, 80256), (21, 80382), (Start: 26 @80484 has 169 MA's), (28, 80502), (34, 80586), (59, 80868), (64, 80904), (79, 81090),

Gene: Delylah_141 Start: 80023, Stop: 80778, Start Num: 26

Candidate Starts for Delylah_141:

(9, 79795), (21, 79921), (Start: 26 @80023 has 169 MA's), (28, 80041), (34, 80125), (59, 80407), (64, 80443), (79, 80629),

Gene: Demodog_145 Start: 82530, Stop: 83285, Start Num: 26

Candidate Starts for Demodog_145:

(9, 82302), (21, 82428), (Start: 26 @82530 has 169 MA's), (28, 82548), (34, 82632), (59, 82914), (64, 82950), (79, 83136),

Gene: Derek_137 Start: 79949, Stop: 80704, Start Num: 26

Candidate Starts for Derek_137:

(Start: 26 @79949 has 169 MA's), (28, 79967), (34, 80051), (59, 80333), (64, 80369), (79, 80555),

Gene: Dietrick_130 Start: 78025, Stop: 78780, Start Num: 26

Candidate Starts for Dietrick_130:

(9, 77797), (21, 77923), (Start: 26 @78025 has 169 MA's), (28, 78043), (34, 78127), (59, 78409), (64, 78445), (79, 78631),

Gene: DirtMonster_132 Start: 79283, Stop: 80038, Start Num: 26

Candidate Starts for DirtMonster_132:

(9, 79055), (21, 79181), (Start: 26 @79283 has 169 MA's), (28, 79301), (34, 79385), (59, 79667), (64, 79703), (79, 79889),

Gene: Domi_131 Start: 79362, Stop: 80117, Start Num: 26

Candidate Starts for Domi_131:

(9, 79134), (21, 79260), (Start: 26 @79362 has 169 MA's), (28, 79380), (34, 79464), (59, 79746), (64, 79782), (79, 79968),

Gene: DrPhinkDaddy_137 Start: 80542, Stop: 81297, Start Num: 26

Candidate Starts for DrPhinkDaddy_137:

(9, 80314), (21, 80440), (Start: 26 @80542 has 169 MA's), (28, 80560), (34, 80644), (59, 80926), (64, 80962), (79, 81148),

Gene: Drazdys_136 Start: 79013, Stop: 79768, Start Num: 26

Candidate Starts for Drazdys_136:

(9, 78785), (21, 78911), (Start: 26 @79013 has 169 MA's), (28, 79031), (34, 79115), (59, 79397), (64, 79433), (79, 79619),

Gene: ET08_126 Start: 79003, Stop: 79758, Start Num: 26

Candidate Starts for ET08_126:

(9, 78775), (21, 78901), (Start: 26 @79003 has 169 MA's), (28, 79021), (34, 79105), (59, 79387), (64, 79423), (79, 79609),

Gene: EasyJones_141 Start: 79570, Stop: 80325, Start Num: 26

Candidate Starts for EasyJones_141:

(9, 79342), (21, 79468), (Start: 26 @79570 has 169 MA's), (28, 79588), (34, 79672), (59, 79954), (64, 79990), (79, 80176),

Gene: Edtherson_36 Start: 28770, Stop: 29729, Start Num: 3

Candidate Starts for Edtherson_36:

(Start: 3 @28770 has 47 MA's), (7, 28806), (Start: 16 @28848 has 1 MA's), (Start: 22 @28935 has 1 MA's), (24, 28962), (30, 29070), (31, 29076), (33, 29091), (41, 29190), (43, 29202), (49, 29265),

Gene: EggyFarm_146 Start: 82288, Stop: 83043, Start Num: 26

Candidate Starts for EggyFarm_146:

(9, 82060), (21, 82186), (Start: 26 @82288 has 169 MA's), (28, 82306), (34, 82390), (59, 82672), (64, 82708), (79, 82894),

Gene: EleanorGeorge_24 Start: 24437, Stop: 25399, Start Num: 2

Candidate Starts for EleanorGeorge_24:

(1, 24377), (Start: 2 @24437 has 54 MA's), (8, 24485), (14, 24518), (19, 24551), (31, 24764), (33, 24779), (42, 24875), (62, 25058), (67, 25121),

Gene: EmToTheThree_140 Start: 81282, Stop: 82037, Start Num: 26

Candidate Starts for EmToTheThree_140:

(9, 81054), (21, 81180), (Start: 26 @81282 has 169 MA's), (28, 81300), (34, 81384), (59, 81666), (64, 81702), (79, 81888),

Gene: EmmaElysia_139 Start: 79557, Stop: 80312, Start Num: 26
Candidate Starts for EmmaElysia_139:
(9, 79329), (21, 79455), (Start: 26 @79557 has 169 MA's), (28, 79575), (34, 79659), (59, 79941), (64, 79977), (79, 80163),

Gene: Erdmann_138 Start: 80331, Stop: 81086, Start Num: 26
Candidate Starts for Erdmann_138:
(9, 80103), (21, 80229), (Start: 26 @80331 has 169 MA's), (28, 80349), (34, 80433), (59, 80715), (64, 80751), (79, 80937),

Gene: ErnieJ_132 Start: 78300, Stop: 79055, Start Num: 26
Candidate Starts for ErnieJ_132:
(Start: 26 @78300 has 169 MA's), (28, 78318), (34, 78402), (59, 78684), (64, 78720), (79, 78906),

Gene: Espresso_35 Start: 28134, Stop: 29081, Start Num: 3
Candidate Starts for Espresso_35:
(Start: 3 @28134 has 47 MA's), (7, 28170), (Start: 16 @28212 has 1 MA's), (Start: 22 @28299 has 1 MA's), (24, 28326), (30, 28434), (31, 28440), (33, 28455), (41, 28554), (43, 28566), (49, 28629),

Gene: Essence_135 Start: 79179, Stop: 79934, Start Num: 26
Candidate Starts for Essence_135:
(Start: 26 @79179 has 169 MA's), (28, 79197), (34, 79281), (59, 79563), (64, 79599), (79, 79785),

Gene: Ewok_139 Start: 79708, Stop: 80463, Start Num: 26
Candidate Starts for Ewok_139:
(9, 79480), (21, 79606), (Start: 26 @79708 has 169 MA's), (28, 79726), (34, 79810), (59, 80092), (64, 80128), (79, 80314),

Gene: Firehouse51_25 Start: 24825, Stop: 25805, Start Num: 2
Candidate Starts for Firehouse51_25:
(1, 24765), (Start: 2 @24825 has 54 MA's), (8, 24873), (19, 24939), (24, 25038), (30, 25146), (33, 25167), (41, 25266), (43, 25278), (49, 25341),

Gene: Flabslab_133 Start: 77890, Stop: 78645, Start Num: 26
Candidate Starts for Flabslab_133:
(Start: 26 @77890 has 169 MA's), (28, 77908), (34, 77992), (59, 78274), (64, 78310), (79, 78496),

Gene: Flathead_25 Start: 24133, Stop: 25113, Start Num: 2
Candidate Starts for Flathead_25:
(1, 24073), (Start: 2 @24133 has 54 MA's), (8, 24181), (Start: 22 @24319 has 1 MA's), (24, 24346), (30, 24454), (31, 24460), (33, 24475), (41, 24574), (43, 24586), (49, 24649),

Gene: Fludd_139 Start: 79356, Stop: 80111, Start Num: 26
Candidate Starts for Fludd_139:
(9, 79128), (21, 79254), (Start: 26 @79356 has 169 MA's), (28, 79374), (34, 79458), (59, 79740), (64, 79776), (79, 79962),

Gene: FlyCatcher_8 Start: 4427, Stop: 5395, Start Num: 2
Candidate Starts for FlyCatcher_8:
(Start: 2 @4427 has 54 MA's), (19, 4550), (33, 4754), (48, 4880), (51, 4949),

Gene: FoxtrotP1_138 Start: 81491, Stop: 82246, Start Num: 26
Candidate Starts for FoxtrotP1_138:

(9, 81263), (21, 81389), (Start: 26 @81491 has 169 MA's), (28, 81509), (34, 81593), (59, 81875), (64, 81911), (79, 82097),

Gene: Francis47_35 Start: 28529, Stop: 29485, Start Num: 3

Candidate Starts for Francis47_35:

(Start: 3 @28529 has 47 MA's), (8, 28565), (15, 28607), (Start: 22 @28694 has 1 MA's), (24, 28721), (33, 28850), (35, 28871), (38, 28904), (39, 28910), (40, 28940), (55, 29066), (62, 29135),

Gene: FrayBell_143 Start: 80655, Stop: 81410, Start Num: 26

Candidate Starts for FrayBell_143:

(9, 80427), (21, 80553), (Start: 26 @80655 has 169 MA's), (28, 80673), (34, 80757), (59, 81039), (64, 81075), (79, 81261),

Gene: Fruitloop_24 Start: 24297, Stop: 25277, Start Num: 2

Candidate Starts for Fruitloop_24:

(1, 24237), (Start: 2 @24297 has 54 MA's), (8, 24345), (14, 24378), (19, 24411), (Start: 22 @24483 has 1 MA's), (24, 24510), (30, 24618), (33, 24639), (41, 24738), (43, 24750), (49, 24813),

Gene: FudgeTart_136 Start: 79361, Stop: 80116, Start Num: 26

Candidate Starts for FudgeTart_136:

(9, 79133), (21, 79259), (Start: 26 @79361 has 169 MA's), (28, 79379), (34, 79463), (59, 79745), (64, 79781), (79, 79967),

Gene: Gabriel_138 Start: 78585, Stop: 79340, Start Num: 26

Candidate Starts for Gabriel_138:

(9, 78357), (21, 78483), (Start: 26 @78585 has 169 MA's), (28, 78603), (34, 78687), (59, 78969), (64, 79005), (79, 79191),

Gene: Gamgam_139 Start: 79328, Stop: 80083, Start Num: 26

Candidate Starts for Gamgam_139:

(9, 79100), (21, 79226), (Start: 26 @79328 has 169 MA's), (28, 79346), (34, 79430), (59, 79712), (64, 79748), (79, 79934),

Gene: Ghost_137 Start: 79338, Stop: 80093, Start Num: 26

Candidate Starts for Ghost_137:

(9, 79110), (21, 79236), (Start: 26 @79338 has 169 MA's), (28, 79356), (34, 79440), (59, 79722), (64, 79758), (79, 79944),

Gene: Gizmo_143 Start: 81960, Stop: 82715, Start Num: 26

Candidate Starts for Gizmo_143:

(9, 81732), (21, 81858), (Start: 26 @81960 has 169 MA's), (28, 81978), (34, 82062), (59, 82344), (64, 82380), (79, 82566),

Gene: GlutenPhree_138 Start: 79338, Stop: 80093, Start Num: 26

Candidate Starts for GlutenPhree_138:

(9, 79110), (21, 79236), (Start: 26 @79338 has 169 MA's), (28, 79356), (34, 79440), (59, 79722), (64, 79758), (79, 79944),

Gene: Gonephishing_40 Start: 34779, Stop: 35744, Start Num: 2

Candidate Starts for Gonephishing_40:

(1, 34719), (Start: 2 @34779 has 54 MA's), (8, 34827), (14, 34860), (19, 34893), (30, 35100), (31, 35106), (33, 35121), (41, 35220), (43, 35232), (49, 35295), (61, 35406), (63, 35427), (65, 35433), (73, 35535), (77, 35601), (78, 35607), (84, 35670), (85, 35673), (88, 35682), (91, 35700), (94, 35727),

Gene: Grasshills_145 Start: 82288, Stop: 83043, Start Num: 26

Candidate Starts for Grasshills_145:

(9, 82060), (21, 82186), (Start: 26 @82288 has 169 MA's), (28, 82306), (34, 82390), (59, 82672), (64, 82708), (79, 82894),

Gene: Grimmer_25 Start: 24869, Stop: 25660, Start Num: 2

Candidate Starts for Grimmer_25:

(Start: 2 @24869 has 54 MA's), (6, 24917), (12, 24950), (18, 24983), (33, 25211), (44, 25337), (60, 25502),

Gene: Grungle_125 Start: 76603, Stop: 77358, Start Num: 26

Candidate Starts for Grungle_125:

(Start: 26 @76603 has 169 MA's), (31, 76675), (34, 76705), (50, 76906), (68, 77086),

Gene: Guppsters_25 Start: 24505, Stop: 25359, Start Num: 2

Candidate Starts for Guppsters_25:

(1, 24445), (Start: 2 @24505 has 54 MA's), (8, 24553), (24, 24718), (31, 24832), (33, 24847), (34, 24865), (46, 24976), (56, 25069), (69, 25204), (71, 25219), (72, 25228), (74, 25249), (75, 25252),

Gene: Guwapp_137 Start: 78750, Stop: 79505, Start Num: 26

Candidate Starts for Guwapp_137:

(Start: 26 @78750 has 169 MA's), (28, 78768), (34, 78852), (59, 79134), (64, 79170), (79, 79356),

Gene: HINdeR_7 Start: 4364, Stop: 5329, Start Num: 2

Candidate Starts for HINdeR_7:

(Start: 2 @4364 has 54 MA's), (20, 4511), (Start: 22 @4541 has 1 MA's), (27, 4613), (30, 4670), (33, 4691), (51, 4883), (66, 4982),

Gene: Halldule_132 Start: 77629, Stop: 78384, Start Num: 26

Candidate Starts for Halldule_132:

(Start: 26 @77629 has 169 MA's), (28, 77647), (34, 77731), (59, 78013), (64, 78049), (79, 78235),

Gene: Hegedechwinu_25 Start: 24114, Stop: 25094, Start Num: 2

Candidate Starts for Hegedechwinu_25:

(1, 24054), (Start: 2 @24114 has 54 MA's), (8, 24162), (14, 24195), (19, 24228), (Start: 22 @24300 has 1 MA's), (24, 24327), (30, 24435), (33, 24456), (41, 24555), (43, 24567), (49, 24630),

Gene: Hlubikazi_24 Start: 24362, Stop: 25318, Start Num: 2

Candidate Starts for Hlubikazi_24:

(1, 24302), (Start: 2 @24362 has 54 MA's), (5, 24404), (6, 24410), (10, 24431), (12, 24443), (18, 24476), (24, 24575), (31, 24689), (33, 24704), (44, 24830), (60, 24995),

Gene: HyRo_129 Start: 79281, Stop: 80036, Start Num: 26

Candidate Starts for HyRo_129:

(Start: 26 @79281 has 169 MA's), (31, 79353), (34, 79383), (50, 79584), (68, 79764),

Gene: I3_143 Start: 80816, Stop: 81571, Start Num: 26

Candidate Starts for I3_143:

(9, 80588), (21, 80714), (Start: 26 @80816 has 169 MA's), (28, 80834), (34, 80918), (59, 81200), (64, 81236), (79, 81422),

Gene: IMpilo_24 Start: 24298, Stop: 25152, Start Num: 2

Candidate Starts for IMpilo_24:

(1, 24238), (Start: 2 @24298 has 54 MA's), (8, 24346), (14, 24379), (19, 24412), (24, 24511), (31, 24625), (33, 24640), (34, 24658), (46, 24769), (56, 24862), (69, 24997), (71, 25012), (72, 25021), (74, 25042), (75, 25045),

Gene: IkeLoa_132 Start: 79236, Stop: 79991, Start Num: 26

Candidate Starts for IkeLoa_132:

(9, 79008), (21, 79134), (Start: 26 @79236 has 169 MA's), (28, 79254), (34, 79338), (59, 79620), (64, 79656), (79, 79842),

Gene: InigoMontoya_141 Start: 79299, Stop: 80054, Start Num: 26

Candidate Starts for InigoMontoya_141:

(9, 79071), (21, 79197), (Start: 26 @79299 has 169 MA's), (28, 79317), (34, 79401), (59, 79683), (64, 79719), (79, 79905),

Gene: InterFolia_144 Start: 81590, Stop: 82345, Start Num: 26

Candidate Starts for InterFolia_144:

(21, 81488), (Start: 26 @81590 has 169 MA's), (28, 81608), (34, 81692), (59, 81974), (64, 82010), (79, 82196),

Gene: Iota_133 Start: 79287, Stop: 80042, Start Num: 26

Candidate Starts for Iota_133:

(9, 79059), (21, 79185), (Start: 26 @79287 has 169 MA's), (28, 79305), (34, 79389), (59, 79671), (64, 79707), (79, 79893),

Gene: Issimir_136 Start: 80295, Stop: 81050, Start Num: 26

Candidate Starts for Issimir_136:

(9, 80067), (21, 80193), (Start: 26 @80295 has 169 MA's), (28, 80313), (34, 80397), (59, 80679), (64, 80715), (79, 80901),

Gene: Izajani_138 Start: 80501, Stop: 81256, Start Num: 26

Candidate Starts for Izajani_138:

(9, 80273), (21, 80399), (Start: 26 @80501 has 169 MA's), (28, 80519), (34, 80603), (59, 80885), (64, 80921), (79, 81107),

Gene: JPickles_135 Start: 78090, Stop: 78845, Start Num: 26

Candidate Starts for JPickles_135:

(9, 77862), (21, 77988), (Start: 26 @78090 has 169 MA's), (28, 78108), (34, 78192), (59, 78474), (64, 78510), (79, 78696),

Gene: JackSparrow_36 Start: 28398, Stop: 29357, Start Num: 3

Candidate Starts for JackSparrow_36:

(Start: 3 @28398 has 47 MA's), (7, 28434), (Start: 16 @28476 has 1 MA's), (Start: 22 @28563 has 1 MA's), (24, 28590), (30, 28698), (31, 28704), (33, 28719), (41, 28818), (43, 28830), (49, 28893),

Gene: JalFarm20_26 Start: 24635, Stop: 25615, Start Num: 2

Candidate Starts for JalFarm20_26:

(1, 24575), (Start: 2 @24635 has 54 MA's), (8, 24683), (30, 24956), (31, 24962), (33, 24977), (41, 25076), (43, 25088), (49, 25151),

Gene: Janiyra_141 Start: 80265, Stop: 81020, Start Num: 26

Candidate Starts for Janiyra_141:

(9, 80037), (21, 80163), (Start: 26 @80265 has 169 MA's), (28, 80283), (34, 80367), (59, 80649), (64, 80685), (79, 80871),

Gene: JayJay_138 Start: 81296, Stop: 82051, Start Num: 26

Candidate Starts for JayJay_138:

(Start: 26 @81296 has 169 MA's), (28, 81314), (34, 81398), (59, 81680), (64, 81716), (79, 81902),

Gene: Jaygup_138 Start: 79615, Stop: 80370, Start Num: 26

Candidate Starts for Jaygup_138:

(Start: 26 @79615 has 169 MA's), (28, 79633), (34, 79717), (59, 79999), (64, 80035), (79, 80221),

Gene: Jedediah_141 Start: 80148, Stop: 80903, Start Num: 26

Candidate Starts for Jedediah_141:

(Start: 26 @80148 has 169 MA's), (28, 80166), (34, 80250), (59, 80532), (64, 80568), (79, 80754),

Gene: Jemmno_138 Start: 79595, Stop: 80350, Start Num: 26

Candidate Starts for Jemmno_138:

(Start: 26 @79595 has 169 MA's), (28, 79613), (34, 79697), (59, 79979), (64, 80015), (79, 80201),

Gene: Jessibeth14_137 Start: 80127, Stop: 80882, Start Num: 26

Candidate Starts for Jessibeth14_137:

(9, 79899), (21, 80025), (Start: 26 @80127 has 169 MA's), (28, 80145), (34, 80229), (59, 80511), (64, 80547), (79, 80733),

Gene: Jezreel_136 Start: 80281, Stop: 81036, Start Num: 26

Candidate Starts for Jezreel_136:

(9, 80053), (21, 80179), (Start: 26 @80281 has 169 MA's), (28, 80299), (34, 80383), (59, 80665), (64, 80701), (79, 80887),

Gene: JigglyPuff_146 Start: 82445, Stop: 83200, Start Num: 26

Candidate Starts for JigglyPuff_146:

(9, 82217), (21, 82343), (Start: 26 @82445 has 169 MA's), (28, 82463), (34, 82547), (59, 82829), (64, 82865), (79, 83051),

Gene: Job42_27 Start: 25950, Stop: 26804, Start Num: 2

Candidate Starts for Job42_27:

(1, 25890), (Start: 2 @25950 has 54 MA's), (8, 25998), (19, 26064), (24, 26163), (31, 26277), (33, 26292), (34, 26310), (46, 26421), (56, 26514), (69, 26649), (71, 26664), (72, 26673), (74, 26694), (75, 26697),

Gene: Juice456_26 Start: 25385, Stop: 26365, Start Num: 2

Candidate Starts for Juice456_26:

(1, 25325), (Start: 2 @25385 has 54 MA's), (8, 25433), (14, 25466), (19, 25499), (Start: 22 @25571 has 1 MA's), (24, 25598), (30, 25706), (33, 25727), (41, 25826), (43, 25838), (49, 25901),

Gene: JulietS_133 Start: 77482, Stop: 78237, Start Num: 26

Candidate Starts for JulietS_133:

(Start: 26 @77482 has 169 MA's), (28, 77500), (34, 77584), (59, 77866), (64, 77902), (79, 78088),

Gene: JustHall_136 Start: 80123, Stop: 80878, Start Num: 26

Candidate Starts for JustHall_136:

(Start: 26 @80123 has 169 MA's), (28, 80141), (34, 80225), (59, 80507), (64, 80543), (79, 80729),

Gene: KBG_36 Start: 28930, Stop: 29886, Start Num: 3

Candidate Starts for KBG_36:

(Start: 3 @28930 has 47 MA's), (7, 28966), (Start: 16 @29008 has 1 MA's), (Start: 22 @29095 has 1 MA's), (30, 29227), (31, 29233), (33, 29248), (41, 29347), (43, 29359), (49, 29422),

Gene: Kamryn_138 Start: 80933, Stop: 81688, Start Num: 26

Candidate Starts for Kamryn_138:

(9, 80705), (21, 80831), (Start: 26 @80933 has 169 MA's), (28, 80951), (34, 81035), (59, 81317), (64, 81353), (79, 81539),

Gene: Kboogie_142 Start: 79288, Stop: 80043, Start Num: 26

Candidate Starts for Kboogie_142:

(9, 79060), (21, 79186), (Start: 26 @79288 has 169 MA's), (28, 79306), (34, 79390), (59, 79672), (64, 79708), (79, 79894),

Gene: Khaleesi_137 Start: 80230, Stop: 80985, Start Num: 26

Candidate Starts for Khaleesi_137:

(9, 80002), (21, 80128), (Start: 26 @80230 has 169 MA's), (28, 80248), (34, 80332), (59, 80614), (64, 80650), (79, 80836),

Gene: Koguma_135 Start: 77765, Stop: 78520, Start Num: 26

Candidate Starts for Koguma_135:

(Start: 26 @77765 has 169 MA's), (31, 77837), (34, 77867), (50, 78068), (68, 78248),

Gene: KristaRAM_25 Start: 24939, Stop: 25919, Start Num: 2

Candidate Starts for KristaRAM_25:

(1, 24879), (Start: 2 @24939 has 54 MA's), (8, 24987), (19, 25053), (Start: 22 @25125 has 1 MA's), (24, 25152), (30, 25260), (31, 25266), (33, 25281), (41, 25380), (43, 25392), (49, 25455),

Gene: Kugel_36 Start: 28207, Stop: 29163, Start Num: 3

Candidate Starts for Kugel_36:

(Start: 3 @28207 has 47 MA's), (8, 28243), (15, 28285), (Start: 22 @28372 has 1 MA's), (24, 28399), (33, 28528), (35, 28549), (38, 28582), (40, 28618), (55, 28744), (62, 28813),

Gene: LRRHood_131 Start: 79573, Stop: 80328, Start Num: 26

Candidate Starts for LRRHood_131:

(Start: 26 @79573 has 169 MA's), (31, 79645), (34, 79675), (50, 79876), (68, 80056),

Gene: Latch_139 Start: 79338, Stop: 80093, Start Num: 26

Candidate Starts for Latch_139:

(9, 79110), (21, 79236), (Start: 26 @79338 has 169 MA's), (28, 79356), (34, 79440), (59, 79722), (64, 79758), (79, 79944),

Gene: Lee7_136 Start: 80854, Stop: 81609, Start Num: 26

Candidate Starts for Lee7_136:

(9, 80626), (21, 80752), (Start: 26 @80854 has 169 MA's), (28, 80872), (34, 80956), (59, 81238), (64, 81274), (79, 81460),

Gene: Lesedi_34 Start: 27802, Stop: 28758, Start Num: 3

Candidate Starts for Lesedi_34:

(Start: 3 @27802 has 47 MA's), (7, 27838), (Start: 16 @27880 has 1 MA's), (Start: 22 @27967 has 1 MA's), (24, 27994), (30, 28099), (33, 28120), (41, 28219), (43, 28231), (49, 28294),

Gene: Lethe_138 Start: 80292, Stop: 81047, Start Num: 26
Candidate Starts for Lethe_138:
(9, 80064), (21, 80190), (Start: 26 @80292 has 169 MA's), (28, 80310), (34, 80394), (59, 80676), (64, 80712), (79, 80898),

Gene: LifeSavor_136 Start: 79547, Stop: 80302, Start Num: 26
Candidate Starts for LifeSavor_136:
(Start: 26 @79547 has 169 MA's), (28, 79565), (34, 79649), (59, 79931), (64, 79967), (79, 80153),

Gene: LinStu_136 Start: 80182, Stop: 80937, Start Num: 26
Candidate Starts for LinStu_136:
(Start: 26 @80182 has 169 MA's), (31, 80254), (34, 80284), (50, 80485), (68, 80665),

Gene: LittleShirley_25 Start: 24086, Stop: 25027, Start Num: 2
Candidate Starts for LittleShirley_25:
(1, 24026), (Start: 2 @24086 has 54 MA's), (8, 24134), (14, 24167), (19, 24200), (25, 24308), (33, 24425), (34, 24443),

Gene: Littleton_138 Start: 79667, Stop: 80422, Start Num: 26
Candidate Starts for Littleton_138:
(9, 79439), (21, 79565), (Start: 26 @79667 has 169 MA's), (28, 79685), (34, 79769), (59, 80051), (64, 80087), (79, 80273),

Gene: Loanshark_137 Start: 80198, Stop: 80953, Start Num: 26
Candidate Starts for Loanshark_137:
(9, 79970), (21, 80096), (Start: 26 @80198 has 169 MA's), (28, 80216), (34, 80300), (59, 80582), (64, 80618), (79, 80804),

Gene: LolaVinca_138 Start: 80541, Stop: 81296, Start Num: 26
Candidate Starts for LolaVinca_138:
(9, 80313), (21, 80439), (Start: 26 @80541 has 169 MA's), (28, 80559), (34, 80643), (59, 80925), (64, 80961), (79, 81147),

Gene: LordLeafolot_142 Start: 81507, Stop: 82262, Start Num: 26
Candidate Starts for LordLeafolot_142:
(9, 81279), (21, 81405), (Start: 26 @81507 has 169 MA's), (28, 81525), (34, 81609), (59, 81891), (64, 81927), (79, 82113),

Gene: Lukilu_128 Start: 80583, Stop: 81338, Start Num: 26
Candidate Starts for Lukilu_128:
(Start: 26 @80583 has 169 MA's), (31, 80655), (34, 80685), (50, 80886), (68, 81066),

Gene: Maby2021_138 Start: 80314, Stop: 81069, Start Num: 26
Candidate Starts for Maby2021_138:
(9, 80086), (21, 80212), (Start: 26 @80314 has 169 MA's), (28, 80332), (34, 80416), (59, 80698), (64, 80734), (79, 80920),

Gene: Magnar_35 Start: 27771, Stop: 28730, Start Num: 3
Candidate Starts for Magnar_35:
(Start: 3 @27771 has 47 MA's), (7, 27807), (Start: 16 @27849 has 1 MA's), (Start: 22 @27936 has 1 MA's), (30, 28071), (33, 28092), (41, 28191), (43, 28203), (49, 28266),

Gene: Magnito_34 Start: 27523, Stop: 28482, Start Num: 3

Candidate Starts for Magnito_34:

(Start: 3 @27523 has 47 MA's), (7, 27559), (Start: 16 @27601 has 1 MA's), (Start: 22 @27688 has 1 MA's), (24, 27715), (30, 27823), (31, 27829), (33, 27844), (41, 27943), (43, 27955), (49, 28018),

Gene: Makemake_36 Start: 29239, Stop: 30183, Start Num: 3

Candidate Starts for Makemake_36:

(Start: 3 @29239 has 47 MA's), (7, 29275), (Start: 16 @29317 has 1 MA's), (33, 29560), (47, 29686),

Gene: Mandlovu_24 Start: 24305, Stop: 25288, Start Num: 2

Candidate Starts for Mandlovu_24:

(1, 24245), (Start: 2 @24305 has 54 MA's), (5, 24347), (6, 24353), (10, 24374), (12, 24386), (18, 24419), (24, 24518), (31, 24632), (33, 24647), (44, 24773), (60, 24938), (90, 25217),

Gene: Mangeria_138 Start: 80384, Stop: 81139, Start Num: 26

Candidate Starts for Mangeria_138:

(9, 80156), (21, 80282), (Start: 26 @80384 has 169 MA's), (28, 80402), (34, 80486), (59, 80768), (64, 80804), (79, 80990),

Gene: Marcell_35 Start: 28259, Stop: 29206, Start Num: 3

Candidate Starts for Marcell_35:

(Start: 3 @28259 has 47 MA's), (7, 28295), (Start: 16 @28337 has 1 MA's), (Start: 22 @28424 has 1 MA's), (24, 28451), (29, 28550), (31, 28565), (37, 28625), (55, 28796), (62, 28865), (80, 29105), (83, 29126), (86, 29135), (87, 29138), (93, 29165), (94, 29189),

Gene: Marge_36 Start: 28659, Stop: 29618, Start Num: 3

Candidate Starts for Marge_36:

(Start: 3 @28659 has 47 MA's), (7, 28695), (Start: 16 @28737 has 1 MA's), (Start: 22 @28824 has 1 MA's), (24, 28851), (30, 28959), (33, 28980), (41, 29079), (43, 29091), (49, 29154),

Gene: Matsumoto_135 Start: 79175, Stop: 79930, Start Num: 26

Candidate Starts for Matsumoto_135:

(9, 78947), (21, 79073), (Start: 26 @79175 has 169 MA's), (28, 79193), (34, 79277), (59, 79559), (64, 79595), (79, 79781),

Gene: McGee_140 Start: 78929, Stop: 79684, Start Num: 26

Candidate Starts for McGee_140:

(9, 78701), (21, 78827), (Start: 26 @78929 has 169 MA's), (28, 78947), (34, 79031), (59, 79313), (64, 79349), (79, 79535),

Gene: McWolfish_136 Start: 80103, Stop: 80858, Start Num: 26

Candidate Starts for McWolfish_136:

(9, 79875), (21, 80001), (Start: 26 @80103 has 169 MA's), (28, 80121), (34, 80205), (59, 80487), (64, 80523), (79, 80709),

Gene: Megamind_137 Start: 79987, Stop: 80742, Start Num: 26

Candidate Starts for Megamind_137:

(9, 79759), (21, 79885), (Start: 26 @79987 has 169 MA's), (28, 80005), (34, 80089), (59, 80371), (64, 80407), (79, 80593),

Gene: Melissauren88_24 Start: 24296, Stop: 25273, Start Num: 2

Candidate Starts for Melissauren88_24:

(1, 24236), (Start: 2 @24296 has 54 MA's), (8, 24344), (14, 24377), (19, 24410), (Start: 22 @24482 has 1 MA's), (24, 24509), (33, 24638), (35, 24659), (38, 24692), (40, 24728), (55, 24854), (62, 24923),

Gene: Melpomini_132 Start: 77453, Stop: 78208, Start Num: 26

Candidate Starts for Melpomini_132:

(Start: 26 @77453 has 169 MA's), (28, 77471), (34, 77555), (59, 77837), (64, 77873), (79, 78059),

Gene: MikeLiesIn_139 Start: 80344, Stop: 81099, Start Num: 26

Candidate Starts for MikeLiesIn_139:

(9, 80116), (21, 80242), (Start: 26 @80344 has 169 MA's), (28, 80362), (34, 80446), (59, 80728), (64, 80764), (79, 80950),

Gene: Mikro_135 Start: 81557, Stop: 82312, Start Num: 26

Candidate Starts for Mikro_135:

(9, 81329), (21, 81455), (Start: 26 @81557 has 169 MA's), (28, 81575), (34, 81659), (59, 81941), (64, 81977), (79, 82163),

Gene: MilleniumForce_25 Start: 25077, Stop: 26042, Start Num: 2

Candidate Starts for MilleniumForce_25:

(1, 25017), (Start: 2 @25077 has 54 MA's), (8, 25125), (14, 25158), (19, 25191), (Start: 22 @25263 has 1 MA's), (24, 25290), (30, 25398), (33, 25419), (41, 25518), (43, 25530), (49, 25593), (61, 25704), (63, 25725), (65, 25731), (73, 25833), (77, 25899), (78, 25905), (85, 25971), (88, 25980), (91, 25998), (94, 26025),

Gene: Minerva_45 Start: 38161, Stop: 39015, Start Num: 2

Candidate Starts for Minerva_45:

(1, 38101), (Start: 2 @38161 has 54 MA's), (8, 38209), (24, 38374), (31, 38488), (33, 38503), (34, 38521), (46, 38632), (56, 38725), (69, 38860), (71, 38875), (72, 38884), (74, 38905), (75, 38908),

Gene: Minnie_25 Start: 24808, Stop: 25788, Start Num: 2

Candidate Starts for Minnie_25:

(Start: 2 @24808 has 54 MA's), (8, 24856), (24, 25021), (30, 25129), (33, 25150), (41, 25249), (43, 25261), (49, 25324),

Gene: MoMoMixon_138 Start: 79820, Stop: 80575, Start Num: 26

Candidate Starts for MoMoMixon_138:

(9, 79592), (21, 79718), (Start: 26 @79820 has 169 MA's), (28, 79838), (34, 79922), (59, 80204), (64, 80240), (79, 80426),

Gene: Momo_138 Start: 79338, Stop: 80093, Start Num: 26

Candidate Starts for Momo_138:

(9, 79110), (21, 79236), (Start: 26 @79338 has 169 MA's), (28, 79356), (34, 79440), (59, 79722), (64, 79758), (79, 79944),

Gene: Monet_37 Start: 29287, Stop: 30246, Start Num: 3

Candidate Starts for Monet_37:

(Start: 3 @29287 has 47 MA's), (7, 29323), (Start: 16 @29365 has 1 MA's), (Start: 22 @29452 has 1 MA's), (24, 29479), (30, 29587), (31, 29593), (33, 29608), (41, 29707), (43, 29719), (49, 29782),

Gene: Morizzled23_139 Start: 79693, Stop: 80448, Start Num: 26

Candidate Starts for Morizzled23_139:

(9, 79465), (21, 79591), (Start: 26 @79693 has 169 MA's), (28, 79711), (34, 79795), (59, 80077), (64, 80113), (79, 80299),

Gene: Mozy_25 Start: 24170, Stop: 25150, Start Num: 2

Candidate Starts for Mozy_25:

(Start: 2 @24170 has 54 MA's), (8, 24218), (19, 24284), (Start: 22 @24356 has 1 MA's), (24, 24383), (30, 24491), (31, 24497), (33, 24512), (41, 24611), (43, 24623), (49, 24686),

Gene: Mutaforma13_24 Start: 24312, Stop: 25115, Start Num: 2

Candidate Starts for Mutaforma13_24:

(1, 24252), (Start: 2 @24312 has 54 MA's), (8, 24360), (14, 24393), (19, 24426), (Start: 22 @24498 has 1 MA's), (24, 24525), (30, 24633), (31, 24639), (33, 24654), (41, 24753), (43, 24765), (49, 24828),

Gene: NEHalo_35 Start: 27845, Stop: 28804, Start Num: 3

Candidate Starts for NEHalo_35:

(Start: 3 @27845 has 47 MA's), (7, 27881), (Start: 16 @27923 has 1 MA's), (Start: 22 @28010 has 1 MA's), (24, 28037), (30, 28145), (31, 28151), (33, 28166), (41, 28265), (43, 28277), (49, 28340),

Gene: Naija_138 Start: 79338, Stop: 80093, Start Num: 26

Candidate Starts for Naija_138:

(9, 79110), (21, 79236), (Start: 26 @79338 has 169 MA's), (28, 79356), (34, 79440), (59, 79722), (64, 79758), (79, 79944),

Gene: Napoleon13_134 Start: 77891, Stop: 78646, Start Num: 26

Candidate Starts for Napoleon13_134:

(Start: 26 @77891 has 169 MA's), (28, 77909), (34, 77993), (59, 78275), (64, 78311), (79, 78497),

Gene: Nappy_140 Start: 81254, Stop: 82009, Start Num: 26

Candidate Starts for Nappy_140:

(9, 81026), (21, 81152), (Start: 26 @81254 has 169 MA's), (28, 81272), (34, 81356), (59, 81638), (64, 81674), (79, 81860),

Gene: Naval22_143 Start: 81787, Stop: 82542, Start Num: 26

Candidate Starts for Naval22_143:

(9, 81559), (21, 81685), (Start: 26 @81787 has 169 MA's), (28, 81805), (34, 81889), (59, 82171), (64, 82207), (79, 82393),

Gene: NedWong_139 Start: 80321, Stop: 81076, Start Num: 26

Candidate Starts for NedWong_139:

(9, 80093), (21, 80219), (Start: 26 @80321 has 169 MA's), (28, 80339), (34, 80423), (59, 80705), (64, 80741), (79, 80927),

Gene: Nerujay_36 Start: 28513, Stop: 29472, Start Num: 3

Candidate Starts for Nerujay_36:

(Start: 3 @28513 has 47 MA's), (7, 28549), (8, 28555), (Start: 16 @28591 has 1 MA's), (Start: 22 @28678 has 1 MA's), (24, 28705), (30, 28813), (31, 28819), (33, 28834), (41, 28933), (43, 28945), (49, 29008),

Gene: Ngannou_135 Start: 78320, Stop: 79075, Start Num: 26

Candidate Starts for Ngannou_135:

(9, 78092), (21, 78218), (Start: 26 @78320 has 169 MA's), (28, 78338), (34, 78422), (59, 78704), (64, 78740), (79, 78926),

Gene: Nidhogg_140 Start: 80544, Stop: 81299, Start Num: 26

Candidate Starts for Nidhogg_140:

(9, 80316), (21, 80442), (Start: 26 @80544 has 169 MA's), (28, 80562), (34, 80646), (59, 80928), (64, 80964), (79, 81150),

Gene: NoodleTree_145 Start: 80414, Stop: 81169, Start Num: 26

Candidate Starts for NoodleTree_145:

(9, 80186), (21, 80312), (Start: 26 @80414 has 169 MA's), (28, 80432), (34, 80516), (59, 80798), (64, 80834), (79, 81020),

Gene: Norm_139 Start: 81016, Stop: 81771, Start Num: 26

Candidate Starts for Norm_139:

(9, 80788), (21, 80914), (Start: 26 @81016 has 169 MA's), (28, 81034), (34, 81118), (59, 81400), (64, 81436), (79, 81622),

Gene: NuevoMundo_143 Start: 82596, Stop: 83351, Start Num: 26

Candidate Starts for NuevoMundo_143:

(9, 82368), (21, 82494), (Start: 26 @82596 has 169 MA's), (28, 82614), (34, 82698), (59, 82980), (64, 83016), (79, 83202),

Gene: Ohno789_35 Start: 27906, Stop: 28865, Start Num: 3

Candidate Starts for Ohno789_35:

(Start: 3 @27906 has 47 MA's), (7, 27942), (Start: 16 @27984 has 1 MA's), (Start: 22 @28071 has 1 MA's), (24, 28098), (30, 28206), (31, 28212), (33, 28227), (41, 28326), (43, 28338), (49, 28401),

Gene: Omega_44 Start: 38316, Stop: 39296, Start Num: 2

Candidate Starts for Omega_44:

(1, 38256), (Start: 2 @38316 has 54 MA's), (8, 38364), (19, 38430), (24, 38529), (30, 38637), (31, 38643), (33, 38658), (41, 38757), (43, 38769), (49, 38832),

Gene: Ovechkin_24 Start: 24295, Stop: 25245, Start Num: 2

Candidate Starts for Ovechkin_24:

(1, 24235), (Start: 2 @24295 has 54 MA's), (8, 24343), (Start: 22 @24481 has 1 MA's), (24, 24508), (33, 24637), (38, 24691), (58, 24886),

Gene: Paphu_34 Start: 27776, Stop: 28732, Start Num: 3

Candidate Starts for Paphu_34:

(Start: 3 @27776 has 47 MA's), (8, 27812), (15, 27854), (Start: 22 @27941 has 1 MA's), (24, 27968), (33, 28097), (35, 28118), (38, 28151), (40, 28187), (55, 28313), (62, 28382),

Gene: Paraselene_34 Start: 28248, Stop: 29207, Start Num: 3

Candidate Starts for Paraselene_34:

(Start: 3 @28248 has 47 MA's), (7, 28284), (Start: 16 @28326 has 1 MA's), (Start: 22 @28413 has 1 MA's), (30, 28548), (33, 28569), (41, 28668), (43, 28680), (49, 28743),

Gene: ParkTD_139 Start: 80327, Stop: 81082, Start Num: 26

Candidate Starts for ParkTD_139:

(9, 80099), (21, 80225), (Start: 26 @80327 has 169 MA's), (28, 80345), (34, 80429), (59, 80711), (64, 80747), (79, 80933),

Gene: Patter_139 Start: 79355, Stop: 80110, Start Num: 26

Candidate Starts for Patter_139:

(9, 79127), (21, 79253), (Start: 26 @79355 has 169 MA's), (28, 79373), (34, 79457), (59, 79739), (64, 79775), (79, 79961),

Gene: Perseus_37 Start: 28932, Stop: 29891, Start Num: 3

Candidate Starts for Perseus_37:

(Start: 3 @28932 has 47 MA's), (7, 28968), (Start: 16 @29010 has 1 MA's), (Start: 22 @29097 has 1 MA's), (24, 29124), (30, 29232), (31, 29238), (33, 29253), (41, 29352), (43, 29364), (49, 29427),

Gene: Phalconet_24 Start: 24310, Stop: 25164, Start Num: 2

Candidate Starts for Phalconet_24:

(1, 24250), (Start: 2 @24310 has 54 MA's), (8, 24358), (24, 24523), (31, 24637), (33, 24652), (34, 24670), (46, 24781), (56, 24874), (69, 25009), (71, 25024), (72, 25033), (74, 25054), (75, 25057),

Gene: Phlegm_142 Start: 79338, Stop: 80093, Start Num: 26

Candidate Starts for Phlegm_142:

(9, 79110), (21, 79236), (Start: 26 @79338 has 169 MA's), (28, 79356), (34, 79440), (59, 79722), (64, 79758), (79, 79944),

Gene: Phox_135 Start: 80607, Stop: 81362, Start Num: 26

Candidate Starts for Phox_135:

(9, 80379), (21, 80505), (Start: 26 @80607 has 169 MA's), (28, 80625), (34, 80709), (59, 80991), (64, 81027), (79, 81213),

Gene: Phusco_138 Start: 79614, Stop: 80369, Start Num: 26

Candidate Starts for Phusco_138:

(9, 79386), (21, 79512), (Start: 26 @79614 has 169 MA's), (28, 79632), (34, 79716), (59, 79998), (64, 80034), (79, 80220),

Gene: Pier_142 Start: 82604, Stop: 83359, Start Num: 26

Candidate Starts for Pier_142:

(9, 82376), (21, 82502), (Start: 26 @82604 has 169 MA's), (28, 82622), (34, 82706), (59, 82988), (64, 83024), (79, 83210),

Gene: Pinkcreek_129 Start: 77948, Stop: 78703, Start Num: 26

Candidate Starts for Pinkcreek_129:

(Start: 26 @77948 has 169 MA's), (31, 78020), (34, 78050), (50, 78251), (68, 78431),

Gene: Pio_142 Start: 82216, Stop: 82971, Start Num: 26

Candidate Starts for Pio_142:

(9, 81988), (21, 82114), (Start: 26 @82216 has 169 MA's), (28, 82234), (34, 82318), (59, 82600), (64, 82636), (79, 82822),

Gene: Pita2_37 Start: 28576, Stop: 29523, Start Num: 3

Candidate Starts for Pita2_37:

(Start: 3 @28576 has 47 MA's), (7, 28612), (Start: 16 @28654 has 1 MA's), (Start: 22 @28741 has 1 MA's), (24, 28768), (33, 28897), (44, 29008), (54, 29107), (90, 29452),

Gene: Pivoine_138 Start: 79338, Stop: 80093, Start Num: 26

Candidate Starts for Pivoine_138:

(9, 79110), (21, 79236), (Start: 26 @79338 has 169 MA's), (28, 79356), (34, 79440), (59, 79722), (64, 79758), (79, 79944),

Gene: Pleione_141 Start: 80494, Stop: 81249, Start Num: 26

Candidate Starts for Pleione_141:

(9, 80266), (21, 80392), (Start: 26 @80494 has 169 MA's), (28, 80512), (34, 80596), (59, 80878), (64, 80914), (79, 81100),

Gene: PopTart_24 Start: 24313, Stop: 25278, Start Num: 2

Candidate Starts for PopTart_24:

(Start: 2 @24313 has 54 MA's), (8, 24361), (19, 24427), (Start: 22 @24499 has 1 MA's), (24, 24526), (30, 24634), (31, 24640), (33, 24655), (41, 24754), (43, 24766), (49, 24829), (61, 24940), (63, 24961), (65, 24967), (73, 25069), (77, 25135), (78, 25141), (84, 25204), (85, 25207), (88, 25216), (91, 25234), (94, 25261),

Gene: PurduePete_138 Start: 80741, Stop: 81496, Start Num: 26

Candidate Starts for PurduePete_138:

(9, 80513), (21, 80639), (Start: 26 @80741 has 169 MA's), (28, 80759), (34, 80843), (59, 81125), (64, 81161), (79, 81347),

Gene: QBert_132 Start: 79331, Stop: 80086, Start Num: 26

Candidate Starts for QBert_132:

(Start: 26 @79331 has 169 MA's), (28, 79349), (34, 79433), (59, 79715), (64, 79751), (79, 79937),

Gene: QTRlifeCrisis_36 Start: 28819, Stop: 29613, Start Num: 22

Candidate Starts for QTRlifeCrisis_36:

(Start: 22 @28819 has 1 MA's), (24, 28846), (30, 28954), (31, 28960), (33, 28975), (41, 29074), (43, 29086), (49, 29149),

Gene: Quasimodo_140 Start: 80755, Stop: 81510, Start Num: 26

Candidate Starts for Quasimodo_140:

(Start: 26 @80755 has 169 MA's), (28, 80773), (34, 80857), (59, 81139), (64, 81175), (79, 81361),

Gene: Rabinovish_137 Start: 80939, Stop: 81694, Start Num: 26

Candidate Starts for Rabinovish_137:

(9, 80711), (21, 80837), (Start: 26 @80939 has 169 MA's), (28, 80957), (34, 81041), (59, 81323), (64, 81359), (79, 81545),

Gene: Radiance_24 Start: 24248, Stop: 25189, Start Num: 2

Candidate Starts for Radiance_24:

(1, 24188), (Start: 2 @24248 has 54 MA's), (8, 24296), (25, 24470), (33, 24587), (34, 24605),

Gene: Rahel_137 Start: 79216, Stop: 79971, Start Num: 26

Candidate Starts for Rahel_137:

(9, 78988), (21, 79114), (Start: 26 @79216 has 169 MA's), (28, 79234), (34, 79318), (59, 79600), (64, 79636), (79, 79822),

Gene: Raid_36 Start: 28103, Stop: 29035, Start Num: 3

Candidate Starts for Raid_36:

(Start: 3 @28103 has 47 MA's), (Start: 16 @28181 has 1 MA's), (24, 28295), (29, 28394), (31, 28409), (37, 28469), (55, 28640), (62, 28682), (82, 28931),

Gene: Rajelicia_34 Start: 27812, Stop: 28732, Start Num: 3

Candidate Starts for Rajelicia_34:

(Start: 3 @27812 has 47 MA's), (7, 27848), (Start: 16 @27890 has 1 MA's), (25, 28013), (33, 28130), (34, 28148),

Gene: Rhynn_35 Start: 28103, Stop: 29047, Start Num: 3

Candidate Starts for Rhynn_35:

(Start: 3 @28103 has 47 MA's), (7, 28139), (Start: 16 @28181 has 1 MA's), (Start: 22 @28268 has 1 MA's), (33, 28424), (76, 28868), (90, 28979),

Gene: Rialto_26 Start: 24777, Stop: 25718, Start Num: 2

Candidate Starts for Rialto_26:

(1, 24717), (Start: 2 @24777 has 54 MA's), (8, 24825), (14, 24858), (19, 24891), (25, 24999), (33, 25116), (34, 25134),

Gene: Rizal_133 Start: 78364, Stop: 79119, Start Num: 26

Candidate Starts for Rizal_133:

(9, 78136), (21, 78262), (Start: 26 @78364 has 169 MA's), (28, 78382), (34, 78466), (59, 78748), (64, 78784), (79, 78970),

Gene: RoMag_133 Start: 79528, Stop: 80283, Start Num: 26

Candidate Starts for RoMag_133:

(9, 79300), (21, 79426), (Start: 26 @79528 has 169 MA's), (28, 79546), (34, 79630), (59, 79912), (64, 79948), (79, 80134),

Gene: Ronan_132 Start: 77477, Stop: 78232, Start Num: 26

Candidate Starts for Ronan_132:

(Start: 26 @77477 has 169 MA's), (28, 77495), (34, 77579), (59, 77861), (64, 77897), (79, 78083),

Gene: Roots515_137 Start: 80993, Stop: 81748, Start Num: 26

Candidate Starts for Roots515_137:

(9, 80765), (21, 80891), (Start: 26 @80993 has 169 MA's), (28, 81011), (34, 81095), (59, 81377), (64, 81413), (79, 81599),

Gene: Rutherferd_37 Start: 28709, Stop: 29668, Start Num: 3

Candidate Starts for Rutherferd_37:

(Start: 3 @28709 has 47 MA's), (7, 28745), (Start: 16 @28787 has 1 MA's), (Start: 22 @28874 has 1 MA's), (24, 28901), (30, 29009), (31, 29015), (33, 29030), (41, 29129), (43, 29141), (49, 29204),

Gene: SG4_24 Start: 24415, Stop: 25395, Start Num: 2

Candidate Starts for SG4_24:

(1, 24355), (Start: 2 @24415 has 54 MA's), (8, 24463), (Start: 22 @24601 has 1 MA's), (24, 24628), (30, 24736), (33, 24757), (41, 24856), (43, 24868), (49, 24931),

Gene: STLscum_36 Start: 28859, Stop: 29803, Start Num: 3

Candidate Starts for STLscum_36:

(Start: 3 @28859 has 47 MA's), (7, 28895), (Start: 16 @28937 has 1 MA's), (24, 29051), (30, 29159), (31, 29165), (33, 29180), (41, 29279), (43, 29291), (49, 29354), (61, 29465), (63, 29486), (65, 29492), (73, 29594), (77, 29660), (78, 29666), (84, 29729), (85, 29732), (88, 29741), (91, 29759), (94, 29786),

Gene: SVoro_136 Start: 80701, Stop: 81456, Start Num: 26

Candidate Starts for SVoro_136:

(9, 80473), (21, 80599), (Start: 26 @80701 has 169 MA's), (28, 80719), (34, 80803), (59, 81085), (64, 81121), (79, 81307),

Gene: Sabbb_25 Start: 24561, Stop: 25415, Start Num: 2

Candidate Starts for Sabbb_25:

(1, 24501), (Start: 2 @24561 has 54 MA's), (8, 24609), (24, 24774), (31, 24888), (33, 24903), (34, 24921), (46, 25032), (56, 25125), (69, 25260), (71, 25275), (72, 25284), (74, 25305), (75, 25308),

Gene: Salacia_142 Start: 80655, Stop: 81410, Start Num: 26

Candidate Starts for Salacia_142:

(9, 80427), (21, 80553), (Start: 26 @80655 has 169 MA's), (28, 80673), (34, 80757), (59, 81039), (64, 81075), (79, 81261),

Gene: Sandalphon_25 Start: 24822, Stop: 25802, Start Num: 2

Candidate Starts for Sandalphon_25:

(Start: 2 @24822 has 54 MA's), (8, 24870), (24, 25035), (30, 25143), (33, 25164), (41, 25263), (43, 25275), (49, 25338),

Gene: Sanya_34 Start: 28677, Stop: 29597, Start Num: 3

Candidate Starts for Sanya_34:

(Start: 3 @28677 has 47 MA's), (7, 28713), (Start: 16 @28755 has 1 MA's), (25, 28878), (33, 28995), (34, 29013),

Gene: SarFire_35 Start: 28155, Stop: 29099, Start Num: 3

Candidate Starts for SarFire_35:

(Start: 3 @28155 has 47 MA's), (7, 28191), (Start: 16 @28233 has 1 MA's), (33, 28476), (47, 28602), (90, 29031),

Gene: SassyB_24 Start: 24313, Stop: 25278, Start Num: 2

Candidate Starts for SassyB_24:

(Start: 2 @24313 has 54 MA's), (8, 24361), (19, 24427), (Start: 22 @24499 has 1 MA's), (24, 24526), (30, 24634), (31, 24640), (33, 24655), (41, 24754), (43, 24766), (49, 24829), (61, 24940), (63, 24961), (65, 24967), (73, 25069), (77, 25135), (78, 25141), (84, 25204), (85, 25207), (88, 25216), (91, 25234), (94, 25261),

Gene: Sauce_138 Start: 79271, Stop: 80026, Start Num: 26

Candidate Starts for Sauce_138:

(Start: 26 @79271 has 169 MA's), (31, 79343), (34, 79373), (50, 79574), (68, 79754),

Gene: ScottMcG_134 Start: 79277, Stop: 80032, Start Num: 26

Candidate Starts for ScottMcG_134:

(Start: 26 @79277 has 169 MA's), (28, 79295), (34, 79379), (59, 79661), (64, 79697), (79, 79883),

Gene: Seagreen_25 Start: 24109, Stop: 25089, Start Num: 2

Candidate Starts for Seagreen_25:

(1, 24049), (Start: 2 @24109 has 54 MA's), (8, 24157), (14, 24190), (19, 24223), (Start: 22 @24295 has 1 MA's), (24, 24322), (30, 24430), (33, 24451), (41, 24550), (43, 24562), (49, 24625),

Gene: Seanderson_36 Start: 28535, Stop: 29503, Start Num: 3

Candidate Starts for Seanderson_36:

(Start: 3 @28535 has 47 MA's), (8, 28571), (15, 28613), (Start: 22 @28700 has 1 MA's), (24, 28727), (35, 28877), (38, 28910), (40, 28946), (55, 29072), (62, 29141), (95, 29483), (97, 29489),

Gene: Sebata_138 Start: 80740, Stop: 81495, Start Num: 26

Candidate Starts for Sebata_138:

(Start: 26 @80740 has 169 MA's), (31, 80812), (34, 80842), (50, 81043), (68, 81223),

Gene: Shaqnato_131 Start: 78321, Stop: 79076, Start Num: 26

Candidate Starts for Shaqnato_131:

(9, 78093), (21, 78219), (Start: 26 @78321 has 169 MA's), (28, 78339), (34, 78423), (59, 78705), (64, 78741), (79, 78927),

Gene: Sheen_7 Start: 4509, Stop: 5477, Start Num: 2

Candidate Starts for Sheen_7:

(Start: 2 @4509 has 54 MA's), (19, 4632), (33, 4836), (48, 4962), (51, 5031),

Gene: Shelob_140 Start: 81123, Stop: 81878, Start Num: 26

Candidate Starts for Shelob_140:

(9, 80895), (21, 81021), (Start: 26 @81123 has 169 MA's), (28, 81141), (34, 81225), (59, 81507), (64, 81543), (79, 81729),

Gene: ShiaLabeouf_137 Start: 79651, Stop: 80406, Start Num: 26

Candidate Starts for ShiaLabeouf_137:

(Start: 26 @79651 has 169 MA's), (28, 79669), (34, 79753), (59, 80035), (64, 80071), (79, 80257),

Gene: Shifa_127 Start: 78547, Stop: 79302, Start Num: 26

Candidate Starts for Shifa_127:

(Start: 26 @78547 has 169 MA's), (31, 78619), (34, 78649), (50, 78850), (68, 79030),

Gene: Shnickers_138 Start: 79615, Stop: 80370, Start Num: 26

Candidate Starts for Shnickers_138:

(Start: 26 @79615 has 169 MA's), (28, 79633), (34, 79717), (59, 79999), (64, 80035), (79, 80221),

Gene: Shrimp_138 Start: 80334, Stop: 81089, Start Num: 26

Candidate Starts for Shrimp_138:

(9, 80106), (21, 80232), (Start: 26 @80334 has 169 MA's), (28, 80352), (34, 80436), (59, 80718), (64, 80754), (79, 80940),

Gene: Sibs6_36 Start: 27022, Stop: 27981, Start Num: 3

Candidate Starts for Sibs6_36:

(Start: 3 @27022 has 47 MA's), (7, 27058), (Start: 16 @27100 has 1 MA's), (30, 27322), (33, 27343), (41, 27442), (43, 27454), (49, 27517),

Gene: SilverDipper_140 Start: 79338, Stop: 80093, Start Num: 26

Candidate Starts for SilverDipper_140:

(9, 79110), (21, 79236), (Start: 26 @79338 has 169 MA's), (28, 79356), (34, 79440), (59, 79722), (64, 79758), (79, 79944),

Gene: SkiPole_38 Start: 28360, Stop: 29319, Start Num: 3

Candidate Starts for SkiPole_38:

(Start: 3 @28360 has 47 MA's), (7, 28396), (Start: 16 @28438 has 1 MA's), (Start: 22 @28525 has 1 MA's), (24, 28552), (30, 28660), (31, 28666), (33, 28681), (41, 28780), (43, 28792), (49, 28855),

Gene: Slagathor_36 Start: 28020, Stop: 28940, Start Num: 3

Candidate Starts for Slagathor_36:

(Start: 3 @28020 has 47 MA's), (7, 28056), (Start: 16 @28098 has 1 MA's), (25, 28221), (33, 28338), (34, 28356),

Gene: SmallFry_138 Start: 78840, Stop: 79595, Start Num: 26

Candidate Starts for SmallFry_138:

(Start: 26 @78840 has 169 MA's), (28, 78858), (34, 78942), (59, 79224), (64, 79260), (79, 79446),

Gene: Snazzy_34 Start: 27934, Stop: 28851, Start Num: 3

Candidate Starts for Snazzy_34:

(Start: 3 @27934 has 47 MA's), (7, 27970), (Start: 16 @28012 has 1 MA's), (25, 28135), (33, 28252), (34, 28270),

Gene: Sorpresa_35 Start: 27993, Stop: 28931, Start Num: 3

Candidate Starts for Sorpresa_35:

(Start: 3 @27993 has 47 MA's), (8, 28029), (17, 28071), (Start: 22 @28158 has 1 MA's), (24, 28185), (33, 28311), (34, 28329), (54, 28524), (58, 28572),

Gene: Spartacus_25 Start: 24348, Stop: 25328, Start Num: 2

Candidate Starts for Spartacus_25:

(1, 24288), (Start: 2 @24348 has 54 MA's), (8, 24396), (19, 24462), (Start: 22 @24534 has 1 MA's), (24, 24561), (30, 24669), (31, 24675), (33, 24690), (41, 24789), (43, 24801), (49, 24864),

Gene: Spec_134 Start: 79380, Stop: 80135, Start Num: 26

Candidate Starts for Spec_134:

(Start: 26 @79380 has 169 MA's), (28, 79398), (34, 79482), (59, 79764), (64, 79800), (79, 79986),

Gene: Specks_143 Start: 81505, Stop: 82260, Start Num: 26

Candidate Starts for Specks_143:

(21, 81403), (Start: 26 @81505 has 169 MA's), (28, 81523), (34, 81607), (59, 81889), (64, 81925), (79, 82111),

Gene: SpikeBT_37 Start: 28951, Stop: 29910, Start Num: 3

Candidate Starts for SpikeBT_37:

(Start: 3 @28951 has 47 MA's), (7, 28987), (Start: 16 @29029 has 1 MA's), (Start: 22 @29116 has 1 MA's), (24, 29143), (30, 29251), (31, 29257), (33, 29272), (41, 29371), (43, 29383), (49, 29446),

Gene: Spikelee_25 Start: 24092, Stop: 25072, Start Num: 2

Candidate Starts for Spikelee_25:

(1, 24032), (Start: 2 @24092 has 54 MA's), (8, 24140), (14, 24173), (19, 24206), (Start: 22 @24278 has 1 MA's), (24, 24305), (29, 24404), (33, 24434), (37, 24479), (55, 24650), (62, 24719), (82, 24968),

Gene: Sprinklers_134 Start: 78896, Stop: 79651, Start Num: 26

Candidate Starts for Sprinklers_134:

(9, 78668), (21, 78794), (Start: 26 @78896 has 169 MA's), (28, 78914), (34, 78998), (59, 79280), (64, 79316), (79, 79502),

Gene: Spud_137 Start: 80401, Stop: 81156, Start Num: 26

Candidate Starts for Spud_137:

(Start: 26 @80401 has 169 MA's), (28, 80419), (34, 80503), (59, 80785), (64, 80821), (79, 81007),

Gene: SrishMeg2525_137 Start: 80423, Stop: 81178, Start Num: 26

Candidate Starts for SrishMeg2525_137:

(9, 80195), (21, 80321), (Start: 26 @80423 has 169 MA's), (28, 80441), (34, 80525), (59, 80807), (64, 80843), (79, 81029),

Gene: StAnnes_24 Start: 24309, Stop: 25163, Start Num: 2

Candidate Starts for StAnnes_24:

(1, 24249), (Start: 2 @24309 has 54 MA's), (8, 24357), (14, 24390), (19, 24423), (24, 24522), (31, 24636), (33, 24651), (34, 24669), (46, 24780), (56, 24873), (69, 25008), (71, 25023), (72, 25032), (74, 25053), (75, 25056),

Gene: Stap_25 Start: 24298, Stop: 25260, Start Num: 2

Candidate Starts for Stap_25:

(1, 24238), (Start: 2 @24298 has 54 MA's), (8, 24346), (14, 24379), (19, 24412), (20, 24439), (24, 24496), (29, 24595), (31, 24610), (33, 24625), (55, 24841),

Gene: StephanieG_136 Start: 81233, Stop: 81988, Start Num: 26

Candidate Starts for StephanieG_136:

(9, 81005), (21, 81131), (Start: 26 @81233 has 169 MA's), (28, 81251), (34, 81335), (59, 81617), (64, 81653), (79, 81839),

Gene: Strokeseat_24 Start: 24362, Stop: 25345, Start Num: 2

Candidate Starts for Strokeseat_24:

(1, 24302), (Start: 2 @24362 has 54 MA's), (5, 24404), (6, 24410), (10, 24431), (12, 24443), (18, 24476), (24, 24575), (31, 24689), (33, 24704), (44, 24830), (60, 24995), (90, 25274),

Gene: Stubby_131 Start: 78863, Stop: 79618, Start Num: 26

Candidate Starts for Stubby_131:

(9, 78635), (21, 78761), (Start: 26 @78863 has 169 MA's), (28, 78881), (34, 78965), (59, 79247), (64, 79283), (79, 79469),

Gene: StubbySaigey_142 Start: 79498, Stop: 80253, Start Num: 26

Candidate Starts for StubbySaigey_142:

(9, 79270), (21, 79396), (Start: 26 @79498 has 169 MA's), (28, 79516), (34, 79600), (59, 79882), (64, 79918), (79, 80104),

Gene: Sunshine924_37 Start: 27945, Stop: 28811, Start Num: 16

Candidate Starts for Sunshine924_37:

(6, 27900), (Start: 16 @27945 has 1 MA's), (Start: 22 @28032 has 1 MA's), (24, 28059), (31, 28173), (33, 28188), (45, 28308), (53, 28398),

Gene: Tainan_141 Start: 80828, Stop: 81583, Start Num: 26

Candidate Starts for Tainan_141:

(9, 80600), (21, 80726), (Start: 26 @80828 has 169 MA's), (28, 80846), (34, 80930), (59, 81212), (64, 81248), (79, 81434),

Gene: Taj_24 Start: 24299, Stop: 25279, Start Num: 2

Candidate Starts for Taj_24:

(1, 24239), (Start: 2 @24299 has 54 MA's), (8, 24347), (14, 24380), (19, 24413), (24, 24512), (30, 24620), (33, 24641), (41, 24740), (43, 24752), (49, 24815),

Gene: Teardrop_137 Start: 78829, Stop: 79584, Start Num: 26

Candidate Starts for Teardrop_137:

(21, 78727), (Start: 26 @78829 has 169 MA's), (28, 78847), (34, 78931), (59, 79213), (64, 79249), (79, 79435),

Gene: Teodoridan_33 Start: 27398, Stop: 28357, Start Num: 3

Candidate Starts for Teodoridan_33:

(Start: 3 @27398 has 47 MA's), (7, 27434), (Start: 16 @27476 has 1 MA's), (Start: 22 @27563 has 1 MA's), (24, 27590), (29, 27689), (31, 27704), (37, 27764), (55, 27935), (62, 28004), (82, 28253),

Gene: Timshel_7 Start: 4377, Stop: 5294, Start Num: 2

Candidate Starts for Timshel_7:

(Start: 2 @4377 has 54 MA's), (52, 4893), (57, 4932),

Gene: TinyTim_138 Start: 80081, Stop: 80836, Start Num: 26

Candidate Starts for TinyTim_138:

(9, 79853), (21, 79979), (Start: 26 @80081 has 169 MA's), (28, 80099), (34, 80183), (59, 80465), (64, 80501), (79, 80687),

Gene: Tootsieroll_25 Start: 24107, Stop: 25084, Start Num: 2

Candidate Starts for Tootsieroll_25:

(1, 24047), (Start: 2 @24107 has 54 MA's), (8, 24155), (24, 24320), (33, 24449), (35, 24470), (38, 24503), (40, 24539), (55, 24665),

Gene: Toro_7 Start: 4427, Stop: 5395, Start Num: 2

Candidate Starts for Toro_7:

(Start: 2 @4427 has 54 MA's), (19, 4550), (33, 4754), (48, 4880), (51, 4949),

Gene: Tortoise16_135 Start: 79440, Stop: 80195, Start Num: 26

Candidate Starts for Tortoise16_135:

(9, 79212), (21, 79338), (Start: 26 @79440 has 169 MA's), (28, 79458), (34, 79542), (59, 79824), (64, 79860), (79, 80046),

Gene: Totinger_25 Start: 24056, Stop: 24997, Start Num: 2

Candidate Starts for Totinger_25:

(1, 23996), (Start: 2 @24056 has 54 MA's), (8, 24104), (14, 24137), (25, 24278), (33, 24395), (34, 24413),

Gene: Traft412_37 Start: 28951, Stop: 29910, Start Num: 3

Candidate Starts for Traft412_37:

(Start: 3 @28951 has 47 MA's), (7, 28987), (Start: 16 @29029 has 1 MA's), (Start: 22 @29116 has 1 MA's), (24, 29143), (30, 29251), (31, 29257), (33, 29272), (41, 29371), (43, 29383), (49, 29446),

Gene: Treddle_37 Start: 29241, Stop: 30200, Start Num: 3

Candidate Starts for Treddle_37:

(Start: 3 @29241 has 47 MA's), (7, 29277), (Start: 16 @29319 has 1 MA's), (Start: 22 @29406 has 1 MA's), (30, 29541), (31, 29547), (33, 29562), (41, 29661), (43, 29673), (49, 29736),

Gene: Trinitium_136 Start: 79264, Stop: 80019, Start Num: 26

Candidate Starts for Trinitium_136:

(Start: 26 @79264 has 169 MA's), (28, 79282), (34, 79366), (59, 79648), (64, 79684), (79, 79870),

Gene: Trouble_36 Start: 28854, Stop: 29813, Start Num: 3

Candidate Starts for Trouble_36:

(Start: 3 @28854 has 47 MA's), (7, 28890), (Start: 16 @28932 has 1 MA's), (Start: 22 @29019 has 1 MA's), (24, 29046), (30, 29154), (31, 29160), (33, 29175), (41, 29274), (43, 29286), (49, 29349),

Gene: Turj99_34 Start: 27794, Stop: 28738, Start Num: 3

Candidate Starts for Turj99_34:

(Start: 3 @27794 has 47 MA's), (7, 27830), (Start: 16 @27872 has 1 MA's), (Start: 22 @27959 has 1 MA's), (24, 27986), (30, 28094), (31, 28100), (33, 28115), (41, 28214), (43, 28226), (49, 28289), (61, 28400), (63, 28421), (65, 28427), (73, 28529), (77, 28595), (78, 28601), (85, 28667), (88, 28676), (91, 28694),

Gene: Turret_134 Start: 78709, Stop: 79464, Start Num: 26

Candidate Starts for Turret_134:

(9, 78481), (21, 78607), (Start: 26 @78709 has 169 MA's), (28, 78727), (34, 78811), (59, 79093), (64, 79129), (79, 79315),

Gene: Tweety_25 Start: 24317, Stop: 25297, Start Num: 2

Candidate Starts for Tweety_25:

(1, 24257), (Start: 2 @24317 has 54 MA's), (8, 24365), (19, 24431), (Start: 22 @24503 has 1 MA's), (24, 24530), (30, 24638), (33, 24659), (41, 24758), (43, 24770), (49, 24833),

Gene: TwoPeat_36 Start: 28375, Stop: 29295, Start Num: 3

Candidate Starts for TwoPeat_36:

(Start: 3 @28375 has 47 MA's), (7, 28411), (Start: 16 @28453 has 1 MA's), (25, 28576), (33, 28693), (34, 28711),

Gene: Tyke_138 Start: 80736, Stop: 81491, Start Num: 26

Candidate Starts for Tyke_138:

(9, 80508), (21, 80634), (Start: 26 @80736 has 169 MA's), (28, 80754), (34, 80838), (59, 81120), (64, 81156), (79, 81342),

Gene: VRedHorse_24 Start: 24432, Stop: 25286, Start Num: 2

Candidate Starts for VRedHorse_24:

(1, 24372), (Start: 2 @24432 has 54 MA's), (8, 24480), (24, 24645), (31, 24759), (33, 24774), (34, 24792), (46, 24903), (56, 24996), (69, 25131), (71, 25146), (72, 25155), (74, 25176), (75, 25179),

Gene: ValleyTerrace_139 Start: 79338, Stop: 80093, Start Num: 26

Candidate Starts for ValleyTerrace_139:

(9, 79110), (21, 79236), (Start: 26 @79338 has 169 MA's), (28, 79356), (34, 79440), (59, 79722), (64, 79758), (79, 79944),

Gene: Wachhund_24 Start: 24290, Stop: 25270, Start Num: 2

Candidate Starts for Wachhund_24:

(1, 24230), (Start: 2 @24290 has 54 MA's), (8, 24338), (19, 24404), (Start: 22 @24476 has 1 MA's), (24, 24503), (30, 24611), (33, 24632), (41, 24731), (43, 24743), (49, 24806),

Gene: Wally_137 Start: 78859, Stop: 79614, Start Num: 26

Candidate Starts for Wally_137:

(9, 78631), (21, 78757), (Start: 26 @78859 has 169 MA's), (28, 78877), (34, 78961), (59, 79243), (64, 79279), (79, 79465),

Gene: Wee_25 Start: 24838, Stop: 25818, Start Num: 2

Candidate Starts for Wee_25:

(1, 24778), (Start: 2 @24838 has 54 MA's), (8, 24886), (19, 24952), (24, 25051), (30, 25159), (31, 25165), (33, 25180), (41, 25279), (43, 25291), (49, 25354),

Gene: Whatsapiecost_24 Start: 24315, Stop: 25292, Start Num: 2

Candidate Starts for Whatsapiecost_24:

(1, 24255), (Start: 2 @24315 has 54 MA's), (8, 24363), (Start: 22 @24501 has 1 MA's), (24, 24528), (33, 24657), (35, 24678), (38, 24711), (40, 24747), (55, 24873), (62, 24942),

Gene: Willis_139 Start: 80226, Stop: 80981, Start Num: 26

Candidate Starts for Willis_139:

(9, 79998), (21, 80124), (Start: 26 @80226 has 169 MA's), (28, 80244), (34, 80328), (59, 80610), (64, 80646), (79, 80832),

Gene: XFactor_24 Start: 24271, Stop: 25251, Start Num: 2

Candidate Starts for XFactor_24:

(1, 24211), (Start: 2 @24271 has 54 MA's), (8, 24319), (14, 24352), (19, 24385), (Start: 22 @24457 has 1 MA's), (24, 24484), (30, 24592), (33, 24613), (41, 24712), (43, 24724), (49, 24787),

Gene: Yassified_135 Start: 78936, Stop: 79691, Start Num: 26

Candidate Starts for Yassified_135:

(9, 78708), (21, 78834), (Start: 26 @78936 has 169 MA's), (28, 78954), (34, 79038), (59, 79320), (64, 79356), (79, 79542),

Gene: YemiJoy2021_139 Start: 80318, Stop: 81073, Start Num: 26

Candidate Starts for YemiJoy2021_139:

(9, 80090), (21, 80216), (Start: 26 @80318 has 169 MA's), (28, 80336), (34, 80420), (59, 80702), (64, 80738), (79, 80924),

Gene: YoungMoneyMata_140 Start: 79964, Stop: 80719, Start Num: 26

Candidate Starts for YoungMoneyMata_140:

(Start: 26 @79964 has 169 MA's), (28, 79982), (34, 80066), (59, 80348), (64, 80384), (79, 80570),

Gene: Yucca_137 Start: 80000, Stop: 80755, Start Num: 26

Candidate Starts for Yucca_137:

(9, 79772), (21, 79898), (Start: 26 @80000 has 169 MA's), (28, 80018), (34, 80102), (59, 80384), (64, 80420), (79, 80606),

Gene: Zalkecks_139 Start: 80001, Stop: 80756, Start Num: 26

Candidate Starts for Zalkecks_139:

(9, 79773), (21, 79899), (Start: 26 @80001 has 169 MA's), (28, 80019), (34, 80103), (59, 80385), (64, 80421), (79, 80607),

Gene: Zeenon_139 Start: 80086, Stop: 80841, Start Num: 26

Candidate Starts for Zeenon_139:

(9, 79858), (21, 79984), (Start: 26 @80086 has 169 MA's), (28, 80104), (34, 80188), (59, 80470), (64, 80506), (79, 80692),

Gene: Zephyr_35 Start: 28152, Stop: 29057, Start Num: 4

Candidate Starts for Zephyr_35:

(Start: 4 @28152 has 1 MA's), (7, 28188), (24, 28332), (36, 28494), (96, 29052),

Gene: Zeuska_36 Start: 28583, Stop: 29542, Start Num: 3

Candidate Starts for Zeuska_36:

(Start: 3 @28583 has 47 MA's), (7, 28619), (Start: 16 @28661 has 1 MA's), (Start: 22 @28748 has 1 MA's), (24, 28775), (30, 28883), (31, 28889), (33, 28904), (41, 29003), (43, 29015), (49, 29078),

Gene: ZygoTaiga_136 Start: 81246, Stop: 82001, Start Num: 26

Candidate Starts for ZygoTaiga_136:

(9, 81018), (21, 81144), (Start: 26 @81246 has 169 MA's), (28, 81264), (34, 81348), (59, 81630), (64, 81666), (79, 81852),