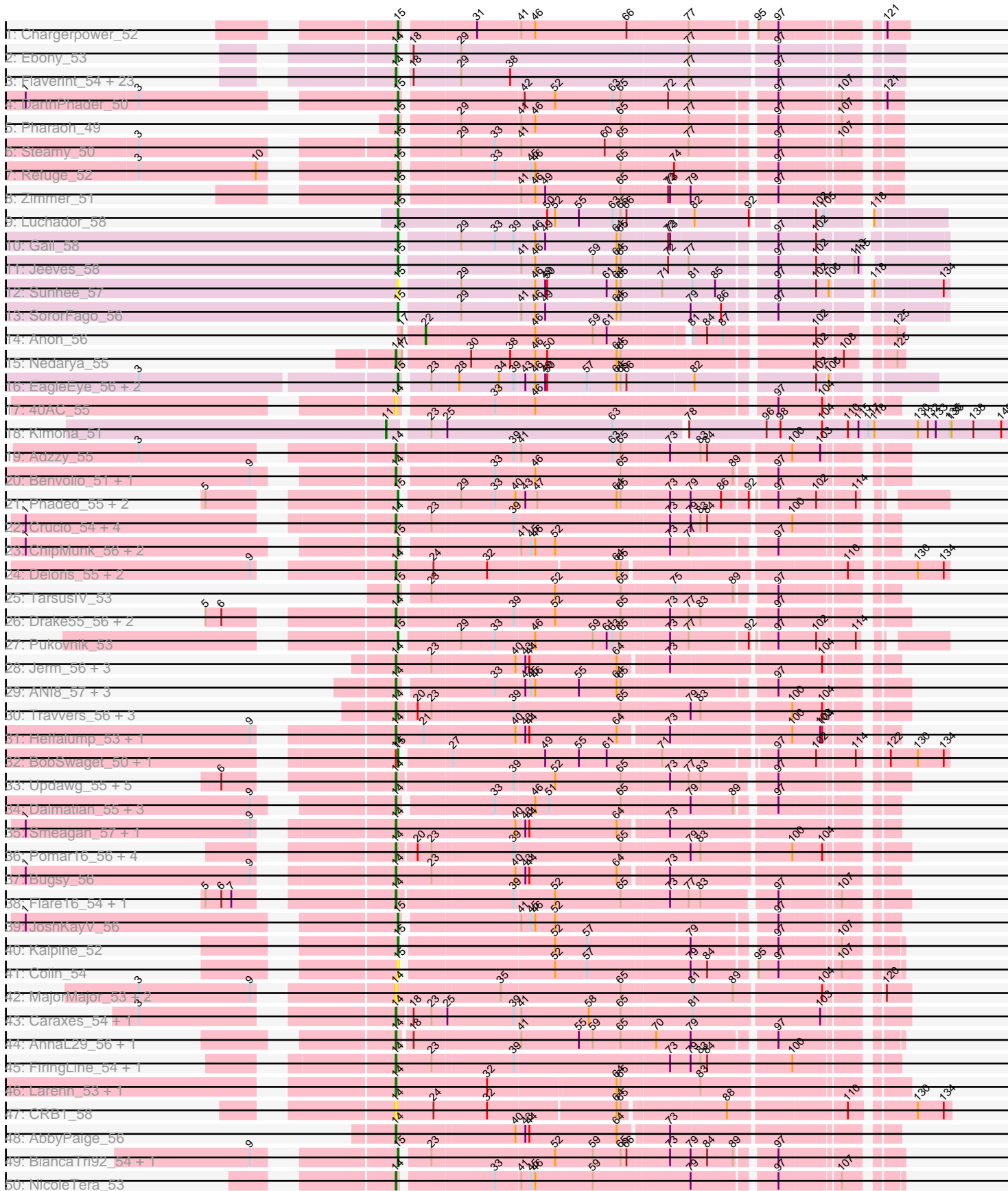
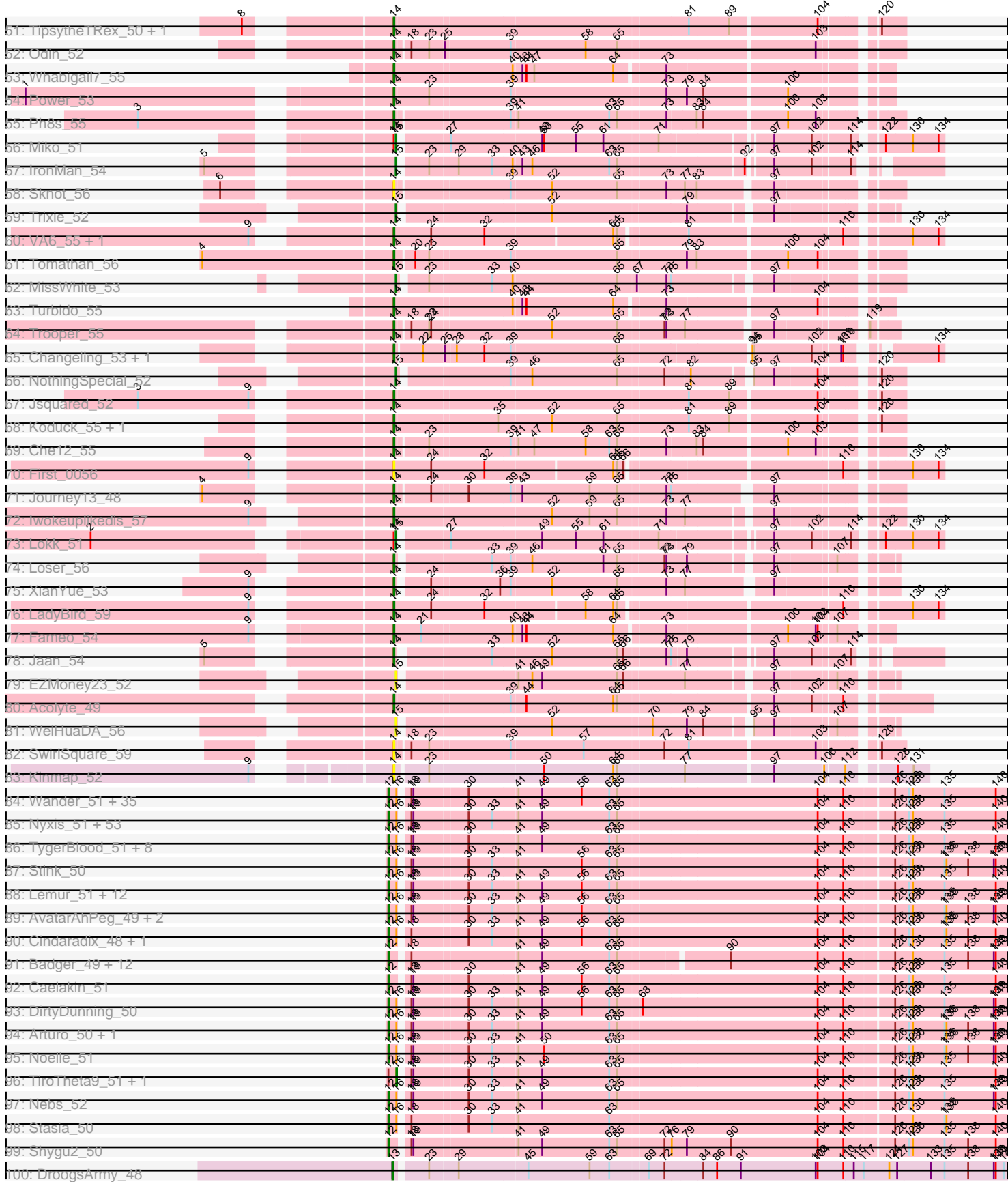


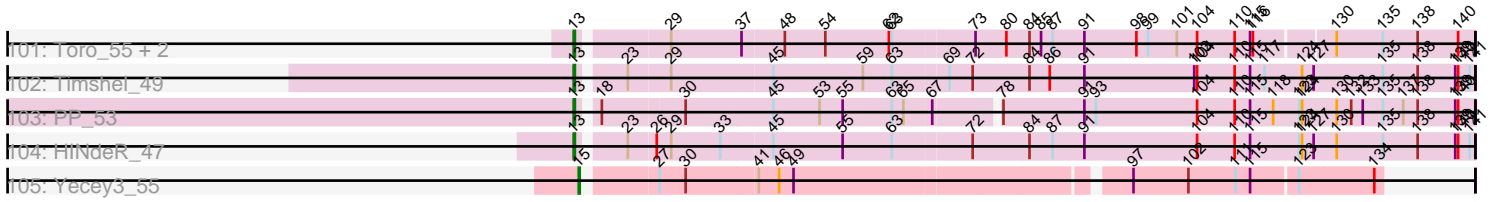
Pham 202616



Pham 202616



Pham 202616



Note: Tracks are now grouped by subcluster and scaled. Switching in subcluster is indicated by changes in track color. Track scale is now set by default to display the region 30 bp upstream of start 1 to 30 bp downstream of the last possible start. If this default region is judged to be packed too tightly with annotated starts, the track will be further scaled to only show that region of the ORF with annotated starts. This action will be indicated by adding "Zoomed" to the title. For starts, yellow indicates the location of called starts comprised solely of Glimmer/GeneMark auto-annotations, green indicates the location of called starts with at least 1 manual gene annotation.

Pham 202616 Report

This analysis was run 01/18/25 on database version 583.

Pham number 202616 has 306 members, 24 are drafts.

Phages represented in each track:

- Track 1 : Chargerpower_52
- Track 2 : Ebony_53
- Track 3 : Flaverint_54, Bud_53, Jabith_54, Sham4_53, Mulciber_53, Snape_53, Lucivia_54, Fibonacci_53, Petersenfast_52, Mabel_53, Orange_53, Bachome_55, Bowtie_54, MaCh_54, Munch_54, Gilberta_54, Et2Brutus_52, Hutc2_53, Timothy_53, Insomnia_54, TinyTimmy_53, Salz_52, Joselito_54, Aneem_54
- Track 4 : DarthPhader_50
- Track 5 : Pharaoh_49
- Track 6 : Steamy_50
- Track 7 : Refuge_52
- Track 8 : Zimmer_51
- Track 9 : Luchador_58
- Track 10 : Gail_58
- Track 11 : Jeeves_58
- Track 12 : Sunhee_57
- Track 13 : SororFago_56
- Track 14 : Anon_56
- Track 15 : Nedarya_55
- Track 16 : EagleEye_56, PainterBoy_55, Lucyedi_55
- Track 17 : 40AC_55
- Track 18 : Kimona_51
- Track 19 : Adzzy_55
- Track 20 : Benvolio_51, Echild_54
- Track 21 : Phaded_55, Landor_54, Bactobuster_53
- Track 22 : Crucio_54, SemperFi_55, Georgie2_55, SweetiePie_54, SnapTap_54
- Track 23 : ChipMunk_56, KingCyrus_56, EvilGenius_56
- Track 24 : Deloris_55, BengiVuitton_56, 20ES_57
- Track 25 : TarsusIV_53
- Track 26 : Drake55_56, HarryHoudini_55, Piro94_54
- Track 27 : Pukovnik_53
- Track 28 : Jerm_56, Leviathan_56, LilTurb_55, Agape74_56
- Track 29 : ANI8_57, VC3_57, AN9_57, C3_52
- Track 30 : Travvers_56, D29_53, D32_55, Naji_56
- Track 31 : Heffalump_53, QueenB2_53
- Track 32 : BobSwaget_50, Rachaly_53
- Track 33 : Updawg_55, Centaur_55, MiculUcigas_54, WideWale_55, Equemioh13_55, Baehexic_53

- Track 34 : Dalmatian_55, DudeLittle_53, Anselm_55, Retro23_55
- Track 35 : Smeagan_57, Dignity_56
- Track 36 : Pomar16_56, StarStuff_56, Kerberos_56, DBQu4n_56, Duplo_56
- Track 37 : Bugsy_56
- Track 38 : Flare16_54, NaSiaTalie_54
- Track 39 : JoshKayV_56
- Track 40 : Kalpine_52
- Track 41 : Colin_54
- Track 42 : MajorMajor_53, Bradman_53, Quokka_52
- Track 43 : Caraxes_54, Superchunk_52
- Track 44 : AnnaL29_56, RedRock_56
- Track 45 : FiringLine_54, QueenBeesly_54
- Track 46 : Larenn_53, Malec_54
- Track 47 : CRB1_58
- Track 48 : AbbyPaige_56
- Track 49 : BiancaTri92_54, Leogania_54
- Track 50 : NicoleTera_53
- Track 51 : TipsytheTRex_50, Serenity_54
- Track 52 : Odin_52
- Track 53 : Whabigail7_55
- Track 54 : Power_53
- Track 55 : Ph8s_55
- Track 56 : Miko_51
- Track 57 : IronMan_54
- Track 58 : Sknot_56
- Track 59 : Trixie_52
- Track 60 : VA6_55, AN3_57
- Track 61 : Tomathan_56
- Track 62 : MissWhite_53
- Track 63 : Turbido_55
- Track 64 : Trooper_55
- Track 65 : Changeling_53, ArcherNM_49
- Track 66 : NothingSpecial_52
- Track 67 : Jsquared_52
- Track 68 : Koduck_55, L5_53
- Track 69 : Che12_55
- Track 70 : First_0056
- Track 71 : Journey13_48
- Track 72 : Iwokeuplikedis_57
- Track 73 : Lokk_51
- Track 74 : Loser_56
- Track 75 : XianYue_53
- Track 76 : LadyBird_59
- Track 77 : Fameo_54
- Track 78 : Jaan_54
- Track 79 : EZMoney23_52
- Track 80 : Acolyte_49
- Track 81 : WeiHuaDA_56
- Track 82 : SwirlSquare_59
- Track 83 : Kinmap_52
- Track 84 : Wander_51, Commander_51, LittleGuy_51, Nemo27_51, Millski_50, Gadost_51, Maverick_51, Avle17_51, NotAPhaseMom_51, Chaph_51, KFPoly_50, HamSlice_50, TroyPia_52, Iracema64_52, Morrow_52, Iceman_51, Funston_50,

Flux_51, PeterPeter_51, Eapen_51, Houdini22_51, Kyee_51, BubbleTrouble_50, Eris_50, Annyong_51, Palestino_50, Phacado_51, Cocoaberry_51, Ruin_51, Pumbaa_51, Roosevelt_50, MeeZee_51, YoSam321_51, JoongJeon_50, Mazhar510_51, NorthStar_50

- Track 85 : Nyxis_51, ICleared_51, Pipcraft_49, Polymorphads_52, Jaykayelowell_49, SenorClean_49, Koreni_50, Bombshell_51, Melvin_53, BellusTerra_52, Medusa_51, Ulysses_50, Connomayer_51, Blackmoor_51, Eros_51, Huxley_51, Phelipe_52, Kingmustik0402_51, Dhanush_51, Bartimeaus_51, Lunsford_52, Citius_51, Obama12_52, Alberto7_52, Rosa24_50, Peaches_51, Baby16_51, Thanksgivukkah_50, Clarenza_50, Wizard007_51, Scamp_51, Koan_49, Tinybot_50, Phontbonne_51, Eurydice_52, Ohfah_52, Burger_49, Druantia_51, Abdiel_51, Broseidon_51, Eagle_51, Sparxx_52, OKaNui_51, Holli_50, Lorenzo_51, LeoAvram_51, Florean_51, Spino_50, LochMonster_52, Wilbur_51, Sabertooth_51, Relief_50, TinaFeyge_51, Romney_51

- Track 86 : TygerBlood_51, ChampagnePapi_53, LHTSCC_53, Cerulean_52, BangNhom_52, Maxo_52, Happiness_50, Kampy_51, SheldonCooper_53

- Track 87 : Stink_50

- Track 88 : Lemur_51, JetBlade_51, LittleB_51, Taquarus_51, Bruiser_50, Deano_50, Camperdownii_49, Albee_51, Shaka_51, Cintron_50, Skipitt_50, LappelDuVide_51, Kremtemulon_51

- Track 89 : AvatarAhPeg_49, Phighter1804_51, Miramae_49

- Track 90 : Cindaradix_48, Mundrea_50

- Track 91 : Badger_49, Cici_50, Datway_50, Bumblebee11_49, Backyardigan_49, Wile_50, AbbysRanger_50, PetiteSangsue_50, Perplexer_50, Katalie136_50, Achebe_49, Xena_49, Morpher26_50

- Track 92 : Caelakin_51

- Track 93 : DirtyDunning_50

- Track 94 : Arturo_50, Kratak_51

- Track 95 : Noelle_51

- Track 96 : TiroTheta9_51, CentreCat_51

- Track 97 : Nebs_52

- Track 98 : Stasia_50

- Track 99 : Shygu2_50

- Track 100 : DroogsArmy_48

- Track 101 : Toro_55, Sheen_53, FlyCatcher_57

- Track 102 : Timshel_49

- Track 103 : PP_53

- Track 104 : HINdeR_47

- Track 105 : Yecey3_55

Summary of Final Annotations (See graph section above for start numbers):

The start number called the most often in the published annotations is 12, it was called in 135 of the 282 non-draft genes in the pham.

Genes that call this "Most Annotated" start:

- AbbysRanger_50, Abdiel_51, Achebe_49, Albee_51, Alberto7_52, Annyong_51, Arturo_50, AvatarAhPeg_49, Avle17_51, Baby16_51, Backyardigan_49, Badger_49, BangNhom_52, Bartimeaus_51, BellusTerra_52, Blackmoor_51, Bombshell_51, Broseidon_51, Bruiser_50, BubbleTrouble_50, Bumblebee11_49, Burger_49,

Caelakin_51, Camperdownii_49, Cerulean_52, ChampagnePapi_53, Chaph_51, Cici_50, Cindaradix_48, Cintron_50, Citius_51, Clarenza_50, Cocoaberry_51, Commander_51, Connomayer_51, Datway_50, Deano_50, Dhanush_51, DirtyDunning_50, Druantia_51, Eagle_51, Eapen_51, Eris_50, Eros_51, Eurydice_52, Florean_51, Flux_51, Funston_50, Gadost_51, HamSlice_50, Happiness_50, Holli_50, Houdini22_51, Huxley_51, ICleared_51, Iceman_51, Iracema64_52, Jaykayelowell_49, JetBlade_51, JoongJeon_50, KFPoly_50, Kampy_51, Katalie136_50, Kingmustik0402_51, Koan_49, Koreni_50, Kratak_51, Kremtemulon_51, Kye_51, LHTSCC_53, LappelDuVide_51, Lemur_51, LeoAvram_51, LittleB_51, LittleGuy_51, LochMonster_52, Lorenzo_51, Lunsford_52, Maverick_51, Maxo_52, Mazhar510_51, Medusa_51, MeeZee_51, Melvin_53, Millski_50, Miramae_49, Morpher26_50, Morrow_52, Mundrea_50, Nebs_52, Nemo27_51, Noelle_51, NorthStar_50, NotAPhaseMom_51, Nyxis_51, OKaNui_51, Obama12_52, Ohfah_52, Palestino_50, Peaches_51, Perplexer_50, PeterPeter_51, PetiteSangsue_50, Phacado_51, Felipe_52, Phighter1804_51, Phontbonne_51, Pipcraft_49, Polymorphads_52, Pumbaa_51, Relief_50, Romney_51, Roosevelt_50, Rosa24_50, Ruin_51, Sabertooth_51, Scamp_51, SeniorClean_49, Shaka_51, SheldonCooper_53, Shygu2_50, Skipitt_50, Sparxx_52, Spino_50, Stasia_50, Stink_50, Taquarus_51, Thanksgivukkah_50, TinaFeyge_51, Tinybot_50, TroyPia_52, TygerBlood_51, Ulysses_50, Wander_51, Wilbur_51, Wile_50, Wizard007_51, Xena_49, YoSam321_51,

Genes that have the "Most Annotated" start but do not call it:

- CentreCat_51, TiroTheta9_51,

Genes that do not have the "Most Annotated" start:

- 20ES_57, 40AC_55, AN3_57, AN9_57, ANI8_57, AbbyPaige_56, Acolyte_49, Adzzy_55, Agape74_56, Aneem_54, AnnaL29_56, Anon_56, Anselm_55, ArcherNM_49, Bachome_55, Bactobuster_53, Baehexic_53, BengiVuitton_56, Benvolio_51, BiancaTri92_54, BobSwaget_50, Bowtie_54, Bradman_53, Bud_53, Buggy_56, C3_52, CRB1_58, Caraxes_54, Centaur_55, Changeling_53, Chargerpower_52, Che12_55, ChipMunk_56, Colin_54, Crucio_54, D29_53, D32_55, DBQu4n_56, Dalmatian_55, DarthPhader_50, Deloris_55, Dignity_56, Drake55_56, DroogsArmy_48, DudeLittle_53, Duplo_56, EZMoney23_52, EagleEye_56, Ebony_53, Echild_54, Equemioh13_55, Et2Brutus_52, EvilGenius_56, Fameo_54, Fibonacci_53, FiringLine_54, First_0056, Flare16_54, Flaverint_54, FlyCatcher_57, Gail_58, Georgie2_55, Gilberta_54, HINdeR_47, HarryHoudini_55, Heffalump_53, Hut2_53, Insomnia_54, IronMan_54, Iwokeuplikedis_57, Jaan_54, Jabith_54, Jeeves_58, Jerm_56, Joselito_54, JoshKayV_56, Journey13_48, Jsquared_52, Kalpine_52, Kerberos_56, Kimona_51, KingCyrus_56, Kinmap_52, Koduck_55, L5_53, LadyBird_59, Landor_54, Larenn_53, Leogania_54, Leviathan_56, LilTurb_55, Loka_51, Loser_56, Luchador_58, Lucivia_54, Lucyedi_55, MaCh_54, Mabel_53, MajorMajor_53, Malec_54, MiculUcigas_54, Miko_51, MissWhite_53, Mulciber_53, Munch_54, NaSiaTalie_54, Naji_56, Nedarya_55, NicoleTera_53, NothingSpecial_52, Odin_52, Orange_53, PP_53, PainterBoy_55, Petersenfast_52, Ph8s_55, Phaded_55, Pharaoh_49, Piro94_54, Pomar16_56, Power_53, Pukovnik_53, QueenB2_53, QueenBeesly_54, Quokka_52, Rachaly_53, RedRock_56, Refuge_52, Retro23_55, Salz_52, SemperFi_55, Serenity_54, Sham4_53, Sheen_53, Sknot_56, Smeagan_57, SnapTap_54, Snape_53, SororFago_56, StarStuff_56, Steamy_50, Sunhee_57, Superchunk_52, SweetiePie_54, SwirlSquare_59, TarsusIV_53, Timothy_53, Timshel_49, TinyTimmy_53, TipsytheTRex_50, Tomathan_56, Toro_55, Travvers_56, Trixie_52, Trooper_55, Turbido_55, Updawg_55, VA6_55, VC3_57, WeiHuaDA_56,

Whabigail7_55, WideWale_55, XianYue_53, Yecey3_55, Zimmer_51,

Summary by start number:

Start 11:

- Found in 1 of 306 (0.3%) of genes in pham
- Manual Annotations of this start: 1 of 282
- Called 100.0% of time when present
- Phage (with cluster) where this start called: Kimona_51 (A19),

Start 12:

- Found in 141 of 306 (46.1%) of genes in pham
- Manual Annotations of this start: 135 of 282
- Called 98.6% of time when present
- Phage (with cluster) where this start called: AbbysRanger_50 (A4), Abdiel_51 (A4), Achebe_49 (A4), Albee_51 (A4), Alberto7_52 (A4), Annyong_51 (A4), Arturo_50 (A4), AvatarAhPeg_49 (A4), Avle17_51 (A4), Baby16_51 (A4), Backyardigan_49 (A4), Badger_49 (A4), BangNhom_52 (A4), Bartimeaus_51 (A4), BellusTerra_52 (A4), Blackmoor_51 (A4), Bombshell_51 (A4), Broseidon_51 (A4), Bruiser_50 (A4), BubbleTrouble_50 (A4), Bumblebee11_49 (A4), Burger_49 (A4), Caelakin_51 (A4), Camperdownii_49 (A4), Cerulean_52 (A4), ChampagnePapi_53 (A4), Chaph_51 (A4), Cici_50 (A4), Cindaradix_48 (A4), Cintron_50 (A4), Citius_51 (A4), Clarenza_50 (A4), Cocoaberry_51 (A4), Commander_51 (A4), Connomayer_51 (A4), Datway_50 (A4), Deano_50 (A4), Dhanush_51 (A4), DirtyDunning_50 (A4), Druantia_51 (A4), Eagle_51 (A4), Eapen_51 (A4), Eris_50 (A4), Eros_51 (A4), Eurydice_52 (A4), Florean_51 (A4), Flux_51 (A4), Funston_50 (A4), Gadost_51 (A4), HamSlice_50 (A4), Happiness_50 (A4), Holli_50 (A4), Houdini22_51 (A4), Huxley_51 (A4), ICleared_51 (A4), Iceman_51 (A4), Iracema64_52 (A4), Jaykayelowell_49 (A4), JetBlade_51 (A4), JoongJeon_50 (A4), KFPoly_50 (A4), Kamy_51 (A4), Katalie136_50 (A4), Kingmustik0402_51 (A4), Koan_49 (A4), Koreni_50 (A4), Kratark_51 (A4), Kremtemulon_51 (A4), Kyee_51 (A4), LHTSCC_53 (A4), LappelDuVide_51 (A4), Lemur_51 (A4), LeoAvram_51 (A4), LittleB_51 (A4), LittleGuy_51 (A4), LochMonster_52 (A4), Lorenzo_51 (A4), Lunsford_52 (A4), Maverick_51 (A4), Maxo_52 (A4), Mazhar510_51 (A4), Medusa_51 (A4), MeeZee_51 (A4), Melvin_53 (A4), Millski_50 (A4), Miramae_49 (A4), Morpher26_50 (A4), Morrow_52 (A4), Mundrea_50 (A4), Nebs_52 (A4), Nemo27_51 (A4), Noelle_51 (A4), NorthStar_50 (A4), NotAPhaseMom_51 (A4), Nyxis_51 (A4), OKaNui_51 (A4), Obama12_52 (A4), Ohfah_52 (A4), Palestino_50 (A4), Peaches_51 (A4), Perplexer_50 (A4), PeterPeter_51 (A4), PetiteSangsue_50 (A4), Phacado_51 (A4), Phelipe_52 (A4), Phighter1804_51 (A4), Phontbonne_51 (A4), Pipcraft_49 (A4), Polymorphads_52 (A4), Pumbaa_51 (A4), Relief_50 (A4), Romney_51 (A4), Roosevelt_50 (A4), Rosa24_50 (A4), Ruin_51 (A4), Sabertooth_51 (A4), Scamp_51 (A4), SenorClean_49 (A4), Shaka_51 (A4), SheldonCooper_53 (A4), Shygu2_50 (A4), Skipitt_50 (A4), Sparxx_52 (A4), Spino_50 (A4), Stasia_50 (A4), Stink_50 (A4), Taquarus_51 (A4), Thanksgivukkah_50 (A4), TinaFeyge_51 (A4), Tinybot_50 (A4), TroyPia_52 (A4), TygerBlood_51 (A4), Ulysses_50 (A4), Wander_51 (A4), Wilbur_51 (A4), Wile_50 (A4), Wizard007_51 (A4), Xena_49 (A4), YoSam321_51 (A4),

Start 13:

- Found in 7 of 306 (2.3%) of genes in pham
- Manual Annotations of this start: 5 of 282
- Called 100.0% of time when present

- Phage (with cluster) where this start called: DroogsArmy_48 (A7), FlyCatcher_57 (A7), HINdeR_47 (A7), PP_53 (A7), Sheen_53 (A7), Timshel_49 (A7), Toro_55 (A7),

Start 14:

- Found in 122 of 306 (39.9%) of genes in pham
- Manual Annotations of this start: 104 of 282
- Called 96.7% of time when present
- Phage (with cluster) where this start called: 20ES_57 (A2), 40AC_55 (A17), AN3_57 (A2), AN9_57 (A2), ANI8_57 (A2), AbbyPaige_56 (A2), Acolyte_49 (A2), Adzzy_55 (A2), Agape74_56 (A2), Aneem_54 (A11), AnnaL29_56 (A2), Anselm_55 (A2), ArcherNM_49 (A2), Bachome_55 (A11), Baehexic_53 (A2), BengiVuitton_56 (A2), Benvolio_51 (A2), Bowtie_54 (A11), Bradman_53 (A2), Bud_53 (A11), Buggy_56 (A2), C3_52 (A2), CRB1_58 (A2), Caraxes_54 (A2), Centaur_55 (A2), Changeling_53 (A2), Che12_55 (A2), Crucio_54 (A2), D29_53 (A2), D32_55 (A2), DBQu4n_56 (A2), Dalmatian_55 (A2), Deloris_55 (A2), Dignity_56 (A2), Drake55_56 (A2), DudeLittle_53 (A2), Duplo_56 (A2), Ebony_53 (A11), Echild_54 (A2), Equemioh13_55 (A2), Et2Brutus_52 (A11), Fameo_54 (A2), Fibonacci_53 (A11), FiringLine_54 (A2), First_0056 (A2), Flare16_54 (A2), Flaverint_54 (A11), Georgie2_55 (A2), Gilberta_54 (A11), HarryHoudini_55 (A2), Heffalump_53 (A2), Hutc2_53 (A11), Insomnia_54 (A11), Iwokeuplikedis_57 (A2), Jaan_54 (A2), Jabith_54 (A11), Jerm_56 (A2), Joselito_54 (A11), Journey13_48 (A2), Jsquared_52 (A2), Kerberos_56 (A2), Kinmap_52 (A21), Koduck_55 (A2), L5_53 (A2), LadyBird_59 (A2), Larenn_53 (A2), Leviathan_56 (A2), LilTurb_55 (A2), Loser_56 (A2), Lucivia_54 (A11), MaCh_54 (A11), Mabel_53 (A11), MajorMajor_53 (A2), Malec_54 (A2), MiculUcigas_54 (A2), Mulciber_53 (A11), Munch_54 (A11), NaSiaTalie_54 (A2), Naji_56 (A2), Nedarya_55 (A15), NicoleTera_53 (A2), Odin_52 (A2), Orange_53 (A11), Petersenfast_52 (A11), Ph8s_55 (A2), Piro94_54 (A2), Pomar16_56 (A2), Power_53 (A2), QueenB2_53 (A2), QueenBeesly_54 (A2), Quokka_52 (A2), RedRock_56 (A2), Retro23_55 (A2), Salz_52 (A11), SemperFi_55 (A2), Serenity_54 (A2), Sham4_53 (A11), Sknot_56 (A2), Smeagan_57 (A2), SnapTap_54 (A2), Snape_53 (A11), StarStuff_56 (A2), Superchunk_52 (A2), SweetiePie_54 (A2), SwirlSquare_59 (A2), Timothy_53 (A11), TinyTimmy_53 (A11), TipsytheTRex_50 (A2), Tomathan_56 (A2), Travvers_56 (A2), Trooper_55 (A2), Turbido_55 (A2), Updawg_55 (A2), VA6_55 (A2), VC3_57 (A2), Whabigail7_55 (A2), WideWale_55 (A2), XianYue_53 (A2),

Start 15:

- Found in 38 of 306 (12.4%) of genes in pham
- Manual Annotations of this start: 34 of 282
- Called 100.0% of time when present
- Phage (with cluster) where this start called: Bactobuster_53 (A2), BiancaTri92_54 (A2), BobSwaget_50 (A2), Chargerpower_52 (A), ChipMunk_56 (A2), Colin_54 (A2), DARTHPhader_50 (A12), EZMoney23_52 (A2), EagleEye_56 (A16), EvilGenius_56 (A2), Gail_58 (A14), IronMan_54 (A2), Jeeves_58 (A14), JoshKayV_56 (A2), Kalpine_52 (A2), KingCyrus_56 (A2), Landor_54 (A2), Leogania_54 (A2), Lokk_51 (A2), Luchador_58 (A14), Lucyedi_55 (A16), Miko_51 (A2), MissWhite_53 (A2), NothingSpecial_52 (A2), PainterBoy_55 (A16), Phaded_55 (A2), Pharaoh_49 (A12), Pukovnik_53 (A2), Rachaly_53 (A2), Refuge_52 (A12), SororFago_56 (A14), Steamy_50 (A12), Sunhee_57 (A14), TarsusIV_53 (A2), Trixie_52 (A2), WeiHuaDA_56 (A2), Yecey3_55 (A9), Zimmer_51 (A12),

Start 16:

- Found in 126 of 306 (41.2%) of genes in pham
- Manual Annotations of this start: 2 of 282

- Called 1.6% of time when present
- Phage (with cluster) where this start called: CentreCat_51 (A4), TiroTheta9_51 (A4),

Start 22:

- Found in 3 of 306 (1.0%) of genes in pham
- Manual Annotations of this start: 1 of 282
- Called 33.3% of time when present
- Phage (with cluster) where this start called: Anon_56 (A15),

Summary by clusters:

There are 13 clusters represented in this pham: A15, A21, A17, A16, A11, A12, A19, A2, A, A4, A7, A9, A14,

Info for manual annotations of cluster A:

- Start number 15 was manually annotated 1 time for cluster A.

Info for manual annotations of cluster A11:

- Start number 14 was manually annotated 24 times for cluster A11.

Info for manual annotations of cluster A12:

- Start number 15 was manually annotated 5 times for cluster A12.

Info for manual annotations of cluster A14:

- Start number 15 was manually annotated 4 times for cluster A14.

Info for manual annotations of cluster A15:

- Start number 14 was manually annotated 1 time for cluster A15.
- Start number 22 was manually annotated 1 time for cluster A15.

Info for manual annotations of cluster A16:

- Start number 15 was manually annotated 3 times for cluster A16.

Info for manual annotations of cluster A19:

- Start number 11 was manually annotated 1 time for cluster A19.

Info for manual annotations of cluster A2:

- Start number 14 was manually annotated 79 times for cluster A2.
- Start number 15 was manually annotated 20 times for cluster A2.

Info for manual annotations of cluster A4:

- Start number 12 was manually annotated 135 times for cluster A4.
- Start number 16 was manually annotated 2 times for cluster A4.

Info for manual annotations of cluster A7:

- Start number 13 was manually annotated 5 times for cluster A7.

Info for manual annotations of cluster A9:

- Start number 15 was manually annotated 1 time for cluster A9.

Gene Information:

Gene: 20ES_57 Start: 37404, Stop: 36643, Start Num: 14

Candidate Starts for 20ES_57:

(9, 37569), (Start: 14 @37404 has 104 MA's), (24, 37350), (32, 37269), (64, 37083), (65, 37077), (110, 36771), (130, 36690), (134, 36651),

Gene: 40AC_55 Start: 38040, Stop: 37369, Start Num: 14

Candidate Starts for 40AC_55:

(Start: 14 @38040 has 104 MA's), (33, 37908), (46, 37851), (97, 37515), (104, 37449),

Gene: AN3_57 Start: 36089, Stop: 35328, Start Num: 14

Candidate Starts for AN3_57:

(9, 36254), (Start: 14 @36089 has 104 MA's), (24, 36035), (32, 35954), (64, 35768), (65, 35762), (81, 35672), (110, 35456), (130, 35375), (134, 35336),

Gene: AN9_57 Start: 37029, Stop: 36343, Start Num: 14

Candidate Starts for AN9_57:

(Start: 14 @37029 has 104 MA's), (33, 36897), (43, 36855), (45, 36846), (46, 36840), (55, 36774), (64, 36717), (65, 36711), (97, 36504),

Gene: ANI8_57 Start: 37029, Stop: 36343, Start Num: 14

Candidate Starts for ANI8_57:

(Start: 14 @37029 has 104 MA's), (33, 36897), (43, 36855), (45, 36846), (46, 36840), (55, 36774), (64, 36717), (65, 36711), (97, 36504),

Gene: AbbyPaige_56 Start: 37263, Stop: 36577, Start Num: 14

Candidate Starts for AbbyPaige_56:

(Start: 14 @37263 has 104 MA's), (40, 37092), (43, 37080), (44, 37074), (64, 36942), (73, 36873),

Gene: AbbysRanger_50 Start: 36304, Stop: 35420, Start Num: 12

Candidate Starts for AbbysRanger_50:

(Start: 12 @36304 has 135 MA's), (18, 36283), (41, 36130), (49, 36094), (63, 35992), (65, 35980), (90, 35830), (104, 35698), (110, 35659), (126, 35590), (130, 35563), (135, 35515), (138, 35479), (139, 35440), (140, 35437),

Gene: Abdiel_51 Start: 36342, Stop: 35446, Start Num: 12

Candidate Starts for Abdiel_51:

(Start: 12 @36342 has 135 MA's), (Start: 16 @36330 has 2 MA's), (18, 36321), (19, 36318), (30, 36240), (33, 36204), (41, 36168), (49, 36132), (63, 36030), (65, 36018), (104, 35724), (110, 35685), (126, 35616), (129, 35595), (130, 35589), (135, 35541), (140, 35463),

Gene: Achebe_49 Start: 36287, Stop: 35403, Start Num: 12

Candidate Starts for Achebe_49:

(Start: 12 @36287 has 135 MA's), (18, 36266), (41, 36113), (49, 36077), (63, 35975), (65, 35963), (90, 35813), (104, 35681), (110, 35642), (126, 35573), (130, 35546), (135, 35498), (138, 35462), (139, 35423), (140, 35420),

Gene: Acolyte_49 Start: 36109, Stop: 35363, Start Num: 14

Candidate Starts for Acolyte_49:

(Start: 14 @36109 has 104 MA's), (39, 35944), (44, 35923), (64, 35791), (65, 35785), (97, 35563), (102, 35506), (110, 35467),

Gene: Adzzy_55 Start: 35570, Stop: 34869, Start Num: 14

Candidate Starts for Adzzy_55:

(3, 35903), (Start: 14 @35570 has 104 MA's), (39, 35408), (41, 35399), (63, 35261), (65, 35249), (73, 35180), (83, 35138), (84, 35129), (100, 35009), (103, 34967),

Gene: Agape74_56 Start: 37257, Stop: 36571, Start Num: 14

Candidate Starts for Agape74_56:

(Start: 14 @37257 has 104 MA's), (23, 37206), (40, 37086), (43, 37074), (44, 37068), (64, 36936), (73, 36867), (104, 36651),

Gene: Albee_51 Start: 36341, Stop: 35445, Start Num: 12

Candidate Starts for Albee_51:

(Start: 12 @36341 has 135 MA's), (Start: 16 @36329 has 2 MA's), (18, 36320), (19, 36317), (30, 36239), (33, 36203), (41, 36167), (49, 36131), (56, 36071), (63, 36029), (65, 36017), (104, 35723), (110, 35684), (126, 35615), (129, 35594), (130, 35588), (135, 35540), (140, 35462),

Gene: Alberto7_52 Start: 36678, Stop: 35782, Start Num: 12

Candidate Starts for Alberto7_52:

(Start: 12 @36678 has 135 MA's), (Start: 16 @36666 has 2 MA's), (18, 36657), (19, 36654), (30, 36576), (33, 36540), (41, 36504), (49, 36468), (63, 36366), (65, 36354), (104, 36060), (110, 36021), (126, 35952), (129, 35931), (130, 35925), (135, 35877), (140, 35799),

Gene: Aneem_54 Start: 36203, Stop: 35511, Start Num: 14

Candidate Starts for Aneem_54:

(Start: 14 @36203 has 104 MA's), (18, 36194), (29, 36125), (38, 36053), (77, 35792), (97, 35666),

Gene: AnnaL29_56 Start: 37812, Stop: 37132, Start Num: 14

Candidate Starts for AnnaL29_56:

(Start: 14 @37812 has 104 MA's), (18, 37794), (41, 37638), (55, 37551), (59, 37530), (65, 37488), (70, 37440), (79, 37389), (97, 37278),

Gene: Annyong_51 Start: 36386, Stop: 35490, Start Num: 12

Candidate Starts for Annyong_51:

(Start: 12 @36386 has 135 MA's), (Start: 16 @36374 has 2 MA's), (18, 36365), (19, 36362), (30, 36284), (41, 36212), (49, 36176), (56, 36116), (63, 36074), (65, 36062), (104, 35768), (110, 35729), (126, 35660), (129, 35639), (130, 35633), (135, 35585), (140, 35507),

Gene: Anon_56 Start: 35373, Stop: 34744, Start Num: 22

Candidate Starts for Anon_56:

(17, 35400), (Start: 22 @35373 has 1 MA's), (46, 35217), (59, 35130), (61, 35109), (81, 35001), (84, 34980), (87, 34956), (102, 34836), (125, 34755),

Gene: Anselm_55 Start: 37167, Stop: 36496, Start Num: 14

Candidate Starts for Anselm_55:

(9, 37329), (Start: 14 @37167 has 104 MA's), (33, 37035), (46, 36978), (51, 36957), (65, 36849), (79, 36750), (89, 36687), (97, 36639),

Gene: ArcherNM_49 Start: 36822, Stop: 36085, Start Num: 14

Candidate Starts for ArcherNM_49:

(Start: 14 @36822 has 104 MA's), (Start: 22 @36786 has 1 MA's), (25, 36756), (28, 36741), (32, 36699), (39, 36660), (65, 36501), (94, 36318), (95, 36315), (102, 36228), (109, 36192), (110, 36189), (134, 36093),

Gene: Arturo_50 Start: 36613, Stop: 35717, Start Num: 12

Candidate Starts for Arturo_50:

(Start: 12 @36613 has 135 MA's), (Start: 16 @36601 has 2 MA's), (18, 36592), (19, 36589), (30, 36511), (33, 36475), (41, 36439), (49, 36403), (63, 36301), (65, 36289), (104, 35995), (110, 35956), (126, 35887), (129, 35866), (130, 35860), (135, 35812), (136, 35809), (138, 35776), (139, 35737), (140, 35734),

Gene: AvatarAhPeg_49 Start: 36126, Stop: 35230, Start Num: 12

Candidate Starts for AvatarAhPeg_49:

(Start: 12 @36126 has 135 MA's), (Start: 16 @36114 has 2 MA's), (18, 36105), (19, 36102), (30, 36024), (33, 35988), (41, 35952), (49, 35916), (56, 35856), (63, 35814), (65, 35802), (104, 35508), (110, 35469), (126, 35400), (129, 35379), (130, 35373), (135, 35325), (136, 35322), (138, 35289), (139, 35250), (140, 35247),

Gene: Avle17_51 Start: 36338, Stop: 35442, Start Num: 12

Candidate Starts for Avle17_51:

(Start: 12 @36338 has 135 MA's), (Start: 16 @36326 has 2 MA's), (18, 36317), (19, 36314), (30, 36236), (41, 36164), (49, 36128), (56, 36068), (63, 36026), (65, 36014), (104, 35720), (110, 35681), (126, 35612), (129, 35591), (130, 35585), (135, 35537), (140, 35459),

Gene: Baby16_51 Start: 36352, Stop: 35456, Start Num: 12

Candidate Starts for Baby16_51:

(Start: 12 @36352 has 135 MA's), (Start: 16 @36340 has 2 MA's), (18, 36331), (19, 36328), (30, 36250), (33, 36214), (41, 36178), (49, 36142), (63, 36040), (65, 36028), (104, 35734), (110, 35695), (126, 35626), (129, 35605), (130, 35599), (135, 35551), (140, 35473),

Gene: Bachome_55 Start: 36183, Stop: 35491, Start Num: 14

Candidate Starts for Bachome_55:

(Start: 14 @36183 has 104 MA's), (18, 36174), (29, 36105), (38, 36033), (77, 35772), (97, 35646),

Gene: Backyardigan_49 Start: 36320, Stop: 35436, Start Num: 12

Candidate Starts for Backyardigan_49:

(Start: 12 @36320 has 135 MA's), (18, 36299), (41, 36146), (49, 36110), (63, 36008), (65, 35996), (90, 35846), (104, 35714), (110, 35675), (126, 35606), (130, 35579), (135, 35531), (138, 35495), (139, 35456), (140, 35453),

Gene: Bactobuster_53 Start: 37762, Stop: 37037, Start Num: 15

Candidate Starts for Bactobuster_53:

(5, 37996), (Start: 15 @37762 has 34 MA's), (29, 37684), (33, 37633), (40, 37603), (43, 37591), (47, 37573), (64, 37453), (65, 37447), (73, 37378), (79, 37348), (86, 37303), (92, 37267), (97, 37237), (102, 37180), (114, 37129),

Gene: Badger_49 Start: 36288, Stop: 35404, Start Num: 12

Candidate Starts for Badger_49:

(Start: 12 @36288 has 135 MA's), (18, 36267), (41, 36114), (49, 36078), (63, 35976), (65, 35964), (90, 35814), (104, 35682), (110, 35643), (126, 35574), (130, 35547), (135, 35499), (138, 35463), (139, 35424), (140, 35421),

Gene: Baehexic_53 Start: 36934, Stop: 36239, Start Num: 14

Candidate Starts for Baehexic_53:

(6, 37141), (Start: 14 @36934 has 104 MA's), (39, 36772), (52, 36712), (65, 36613), (73, 36544), (77, 36517), (83, 36499), (97, 36397),

Gene: BangNhom_52 Start: 36777, Stop: 35881, Start Num: 12

Candidate Starts for BangNhom_52:

(Start: 12 @36777 has 135 MA's), (Start: 16 @36765 has 2 MA's), (18, 36756), (19, 36753), (30, 36675), (41, 36603), (49, 36567), (63, 36465), (65, 36453), (104, 36159), (110, 36120), (126, 36051), (129, 36030), (130, 36024), (135, 35976), (140, 35898),

Gene: Bartimeaus_51 Start: 36343, Stop: 35447, Start Num: 12

Candidate Starts for Bartimeaus_51:

(Start: 12 @36343 has 135 MA's), (Start: 16 @36331 has 2 MA's), (18, 36322), (19, 36319), (30, 36241), (33, 36205), (41, 36169), (49, 36133), (63, 36031), (65, 36019), (104, 35725), (110, 35686), (126, 35617), (129, 35596), (130, 35590), (135, 35542), (140, 35464),

Gene: BellusTerra_52 Start: 36342, Stop: 35446, Start Num: 12

Candidate Starts for BellusTerra_52:

(Start: 12 @36342 has 135 MA's), (Start: 16 @36330 has 2 MA's), (18, 36321), (19, 36318), (30, 36240), (33, 36204), (41, 36168), (49, 36132), (63, 36030), (65, 36018), (104, 35724), (110, 35685), (126, 35616), (129, 35595), (130, 35589), (135, 35541), (140, 35463),

Gene: BengiVuitton_56 Start: 37372, Stop: 36611, Start Num: 14

Candidate Starts for BengiVuitton_56:

(9, 37537), (Start: 14 @37372 has 104 MA's), (24, 37318), (32, 37237), (64, 37051), (65, 37045), (110, 36739), (130, 36658), (134, 36619),

Gene: Benvolio_51 Start: 36188, Stop: 35505, Start Num: 14

Candidate Starts for Benvolio_51:

(9, 36353), (Start: 14 @36188 has 104 MA's), (33, 36056), (46, 35999), (65, 35870), (89, 35711), (97, 35663),

Gene: BiancaTri92_54 Start: 37571, Stop: 36897, Start Num: 15

Candidate Starts for BiancaTri92_54:

(9, 37739), (Start: 15 @37571 has 34 MA's), (23, 37535), (52, 37355), (59, 37298), (65, 37256), (66, 37247), (73, 37187), (79, 37157), (84, 37133), (89, 37094), (97, 37046),

Gene: Blackmoor_51 Start: 36343, Stop: 35447, Start Num: 12

Candidate Starts for Blackmoor_51:

(Start: 12 @36343 has 135 MA's), (Start: 16 @36331 has 2 MA's), (18, 36322), (19, 36319), (30, 36241), (33, 36205), (41, 36169), (49, 36133), (63, 36031), (65, 36019), (104, 35725), (110, 35686), (126, 35617), (129, 35596), (130, 35590), (135, 35542), (140, 35464),

Gene: BobSwaget_50 Start: 35667, Stop: 34924, Start Num: 15

Candidate Starts for BobSwaget_50:

(Start: 14 @35670 has 104 MA's), (Start: 15 @35667 has 34 MA's), (27, 35601), (49, 35466), (55, 35415), (61, 35373), (71, 35295), (97, 35148), (102, 35091), (114, 35040), (122, 35010), (130, 34971), (134, 34932),

Gene: Bombshell_51 Start: 36338, Stop: 35442, Start Num: 12

Candidate Starts for Bombshell_51:

(Start: 12 @36338 has 135 MA's), (Start: 16 @36326 has 2 MA's), (18, 36317), (19, 36314), (30, 36236), (33, 36200), (41, 36164), (49, 36128), (63, 36026), (65, 36014), (104, 35720), (110, 35681), (126, 35612), (129, 35591), (130, 35585), (135, 35537), (140, 35459),

Gene: Bowtie_54 Start: 36210, Stop: 35518, Start Num: 14

Candidate Starts for Bowtie_54:

(Start: 14 @36210 has 104 MA's), (18, 36201), (29, 36132), (38, 36060), (77, 35799), (97, 35673),

Gene: Bradman_53 Start: 35786, Stop: 35082, Start Num: 14

Candidate Starts for Bradman_53:

(3, 36119), (9, 35951), (Start: 14 @35786 has 104 MA's), (35, 35639), (65, 35462), (81, 35363), (89, 35303), (104, 35177), (120, 35114),

Gene: Broseidon_51 Start: 36343, Stop: 35447, Start Num: 12

Candidate Starts for Broseidon_51:

(Start: 12 @36343 has 135 MA's), (Start: 16 @36331 has 2 MA's), (18, 36322), (19, 36319), (30, 36241), (33, 36205), (41, 36169), (49, 36133), (63, 36031), (65, 36019), (104, 35725), (110, 35686), (126, 35617), (129, 35596), (130, 35590), (135, 35542), (140, 35464),

Gene: Bruiser_50 Start: 36341, Stop: 35445, Start Num: 12

Candidate Starts for Bruiser_50:

(Start: 12 @36341 has 135 MA's), (Start: 16 @36329 has 2 MA's), (18, 36320), (19, 36317), (30, 36239), (33, 36203), (41, 36167), (49, 36131), (56, 36071), (63, 36029), (65, 36017), (104, 35723), (110, 35684), (126, 35615), (129, 35594), (130, 35588), (135, 35540), (140, 35462),

Gene: BubbleTrouble_50 Start: 36341, Stop: 35445, Start Num: 12

Candidate Starts for BubbleTrouble_50:

(Start: 12 @36341 has 135 MA's), (Start: 16 @36329 has 2 MA's), (18, 36320), (19, 36317), (30, 36239), (41, 36167), (49, 36131), (56, 36071), (63, 36029), (65, 36017), (104, 35723), (110, 35684), (126, 35615), (129, 35594), (130, 35588), (135, 35540), (140, 35462),

Gene: Bud_53 Start: 35757, Stop: 35065, Start Num: 14

Candidate Starts for Bud_53:

(Start: 14 @35757 has 104 MA's), (18, 35748), (29, 35679), (38, 35607), (77, 35346), (97, 35220),

Gene: Buggy_56 Start: 37314, Stop: 36628, Start Num: 14

Candidate Starts for Buggy_56:

(1, 37815), (9, 37476), (Start: 14 @37314 has 104 MA's), (23, 37263), (40, 37143), (43, 37131), (44, 37125), (64, 36993), (73, 36924),

Gene: Bumblebee11_49 Start: 36290, Stop: 35406, Start Num: 12

Candidate Starts for Bumblebee11_49:

(Start: 12 @36290 has 135 MA's), (18, 36269), (41, 36116), (49, 36080), (63, 35978), (65, 35966), (90, 35816), (104, 35684), (110, 35645), (126, 35576), (130, 35549), (135, 35501), (138, 35465), (139, 35426), (140, 35423),

Gene: Burger_49 Start: 36341, Stop: 35445, Start Num: 12

Candidate Starts for Burger_49:

(Start: 12 @36341 has 135 MA's), (Start: 16 @36329 has 2 MA's), (18, 36320), (19, 36317), (30, 36239), (33, 36203), (41, 36167), (49, 36131), (63, 36029), (65, 36017), (104, 35723), (110, 35684), (126, 35615), (129, 35594), (130, 35588), (135, 35540), (140, 35462),

Gene: C3_52 Start: 37029, Stop: 36343, Start Num: 14

Candidate Starts for C3_52:

(Start: 14 @37029 has 104 MA's), (33, 36897), (43, 36855), (45, 36846), (46, 36840), (55, 36774), (64, 36717), (65, 36711), (97, 36504),

Gene: CRB1_58 Start: 37747, Stop: 36983, Start Num: 14

Candidate Starts for CRB1_58:

(Start: 14 @37747 has 104 MA's), (24, 37693), (32, 37612), (64, 37426), (65, 37420), (88, 37279), (110, 37114), (130, 37033), (134, 36994),

Gene: Caelakin_51 Start: 36341, Stop: 35445, Start Num: 12

Candidate Starts for Caelakin_51:

(Start: 12 @36341 has 135 MA's), (18, 36320), (19, 36317), (30, 36239), (41, 36167), (49, 36131), (56, 36071), (63, 36029), (65, 36017), (104, 35723), (110, 35684), (126, 35615), (129, 35594), (130, 35588), (135, 35540), (140, 35462),

Gene: Camperdownii_49 Start: 36015, Stop: 35119, Start Num: 12

Candidate Starts for Camperdownii_49:

(Start: 12 @36015 has 135 MA's), (Start: 16 @36003 has 2 MA's), (18, 35994), (19, 35991), (30, 35913), (33, 35877), (41, 35841), (49, 35805), (56, 35745), (63, 35703), (65, 35691), (104, 35397), (110, 35358), (126, 35289), (129, 35268), (130, 35262), (135, 35214), (140, 35136),

Gene: Caraxes_54 Start: 35279, Stop: 34578, Start Num: 14

Candidate Starts for Caraxes_54:

(3, 35612), (Start: 14 @35279 has 104 MA's), (18, 35261), (23, 35234), (25, 35213), (39, 35117), (41, 35108), (58, 35006), (65, 34958), (81, 34859), (103, 34676),

Gene: Centaur_55 Start: 37151, Stop: 36456, Start Num: 14

Candidate Starts for Centaur_55:

(6, 37358), (Start: 14 @37151 has 104 MA's), (39, 36989), (52, 36929), (65, 36830), (73, 36761), (77, 36734), (83, 36716), (97, 36614),

Gene: CentreCat_51 Start: 36332, Stop: 35448, Start Num: 16

Candidate Starts for CentreCat_51:

(Start: 12 @36344 has 135 MA's), (Start: 16 @36332 has 2 MA's), (18, 36323), (19, 36320), (30, 36242), (33, 36206), (41, 36170), (49, 36134), (63, 36032), (65, 36020), (104, 35726), (110, 35687), (126, 35618), (129, 35597), (130, 35591), (135, 35543), (140, 35465),

Gene: Cerulean_52 Start: 36778, Stop: 35882, Start Num: 12

Candidate Starts for Cerulean_52:

(Start: 12 @36778 has 135 MA's), (Start: 16 @36766 has 2 MA's), (18, 36757), (19, 36754), (30, 36676), (41, 36604), (49, 36568), (63, 36466), (65, 36454), (104, 36160), (110, 36121), (126, 36052), (129, 36031), (130, 36025), (135, 35977), (140, 35899),

Gene: ChampagnePapi_53 Start: 36777, Stop: 35881, Start Num: 12

Candidate Starts for ChampagnePapi_53:

(Start: 12 @36777 has 135 MA's), (Start: 16 @36765 has 2 MA's), (18, 36756), (19, 36753), (30, 36675), (41, 36603), (49, 36567), (63, 36465), (65, 36453), (104, 36159), (110, 36120), (126, 36051), (129, 36030), (130, 36024), (135, 35976), (140, 35898),

Gene: Changeling_53 Start: 37417, Stop: 36680, Start Num: 14

Candidate Starts for Changeling_53:

(Start: 14 @37417 has 104 MA's), (Start: 22 @37381 has 1 MA's), (25, 37351), (28, 37336), (32, 37294), (39, 37255), (65, 37096), (94, 36913), (95, 36910), (102, 36823), (109, 36787), (110, 36784), (134, 36688),

Gene: Chaph_51 Start: 36352, Stop: 35456, Start Num: 12

Candidate Starts for Chaph_51:

(Start: 12 @36352 has 135 MA's), (Start: 16 @36340 has 2 MA's), (18, 36331), (19, 36328), (30, 36250), (41, 36178), (49, 36142), (56, 36082), (63, 36040), (65, 36028), (104, 35734), (110, 35695),

(126, 35626), (129, 35605), (130, 35599), (135, 35551), (140, 35473),

Gene: Chargerpower_52 Start: 35532, Stop: 34852, Start Num: 15

Candidate Starts for Chargerpower_52:

(Start: 15 @35532 has 34 MA's), (31, 35430), (41, 35367), (46, 35346), (66, 35208), (77, 35121), (95, 35037), (97, 35007), (121, 34881),

Gene: Che12_55 Start: 35711, Stop: 35010, Start Num: 14

Candidate Starts for Che12_55:

(Start: 14 @35711 has 104 MA's), (23, 35666), (39, 35549), (41, 35540), (47, 35516), (58, 35438), (63, 35402), (65, 35390), (73, 35321), (83, 35279), (84, 35270), (100, 35150), (103, 35108),

Gene: ChipMunk_56 Start: 38514, Stop: 37846, Start Num: 15

Candidate Starts for ChipMunk_56:

(1, 39018), (Start: 15 @38514 has 34 MA's), (41, 38349), (45, 38334), (46, 38328), (52, 38298), (73, 38130), (77, 38103), (97, 37989),

Gene: Cici_50 Start: 36305, Stop: 35421, Start Num: 12

Candidate Starts for Cici_50:

(Start: 12 @36305 has 135 MA's), (18, 36284), (41, 36131), (49, 36095), (63, 35993), (65, 35981), (90, 35831), (104, 35699), (110, 35660), (126, 35591), (130, 35564), (135, 35516), (138, 35480), (139, 35441), (140, 35438),

Gene: Cindaradix_48 Start: 35971, Stop: 35075, Start Num: 12

Candidate Starts for Cindaradix_48:

(Start: 12 @35971 has 135 MA's), (Start: 16 @35959 has 2 MA's), (18, 35950), (30, 35869), (33, 35833), (41, 35797), (49, 35761), (56, 35701), (63, 35659), (65, 35647), (104, 35353), (110, 35314), (126, 35245), (129, 35224), (130, 35218), (135, 35170), (136, 35167), (138, 35134), (140, 35092),

Gene: Cintron_50 Start: 36318, Stop: 35422, Start Num: 12

Candidate Starts for Cintron_50:

(Start: 12 @36318 has 135 MA's), (Start: 16 @36306 has 2 MA's), (18, 36297), (19, 36294), (30, 36216), (33, 36180), (41, 36144), (49, 36108), (56, 36048), (63, 36006), (65, 35994), (104, 35700), (110, 35661), (126, 35592), (129, 35571), (130, 35565), (135, 35517), (140, 35439),

Gene: Citius_51 Start: 36362, Stop: 35466, Start Num: 12

Candidate Starts for Citius_51:

(Start: 12 @36362 has 135 MA's), (Start: 16 @36350 has 2 MA's), (18, 36341), (19, 36338), (30, 36260), (33, 36224), (41, 36188), (49, 36152), (63, 36050), (65, 36038), (104, 35744), (110, 35705), (126, 35636), (129, 35615), (130, 35609), (135, 35561), (140, 35483),

Gene: Clarenza_50 Start: 36338, Stop: 35442, Start Num: 12

Candidate Starts for Clarenza_50:

(Start: 12 @36338 has 135 MA's), (Start: 16 @36326 has 2 MA's), (18, 36317), (19, 36314), (30, 36236), (33, 36200), (41, 36164), (49, 36128), (63, 36026), (65, 36014), (104, 35720), (110, 35681), (126, 35612), (129, 35591), (130, 35585), (135, 35537), (140, 35459),

Gene: Cocoaberry_51 Start: 36345, Stop: 35449, Start Num: 12

Candidate Starts for Cocoaberry_51:

(Start: 12 @36345 has 135 MA's), (Start: 16 @36333 has 2 MA's), (18, 36324), (19, 36321), (30, 36243), (41, 36171), (49, 36135), (56, 36075), (63, 36033), (65, 36021), (104, 35727), (110, 35688), (126, 35619), (129, 35598), (130, 35592), (135, 35544), (140, 35466),

Gene: Colin_54 Start: 37138, Stop: 36467, Start Num: 15

Candidate Starts for Colin_54:

(Start: 15 @37138 has 34 MA's), (52, 36922), (57, 36874), (79, 36724), (84, 36700), (95, 36643), (97, 36613), (107, 36529),

Gene: Commander_51 Start: 36340, Stop: 35444, Start Num: 12

Candidate Starts for Commander_51:

(Start: 12 @36340 has 135 MA's), (Start: 16 @36328 has 2 MA's), (18, 36319), (19, 36316), (30, 36238), (41, 36166), (49, 36130), (56, 36070), (63, 36028), (65, 36016), (104, 35722), (110, 35683), (126, 35614), (129, 35593), (130, 35587), (135, 35539), (140, 35461),

Gene: Connomayer_51 Start: 36341, Stop: 35445, Start Num: 12

Candidate Starts for Connomayer_51:

(Start: 12 @36341 has 135 MA's), (Start: 16 @36329 has 2 MA's), (18, 36320), (19, 36317), (30, 36239), (33, 36203), (41, 36167), (49, 36131), (63, 36029), (65, 36017), (104, 35723), (110, 35684), (126, 35615), (129, 35594), (130, 35588), (135, 35540), (140, 35462),

Gene: Crucio_54 Start: 36763, Stop: 36071, Start Num: 14

Candidate Starts for Crucio_54:

(1, 37264), (Start: 14 @36763 has 104 MA's), (23, 36715), (39, 36598), (73, 36370), (79, 36340), (83, 36325), (84, 36316), (100, 36196),

Gene: D29_53 Start: 36632, Stop: 35925, Start Num: 14

Candidate Starts for D29_53:

(Start: 14 @36632 has 104 MA's), (20, 36605), (23, 36584), (39, 36467), (65, 36308), (79, 36209), (83, 36194), (100, 36065), (104, 36020),

Gene: D32_55 Start: 36632, Stop: 35925, Start Num: 14

Candidate Starts for D32_55:

(Start: 14 @36632 has 104 MA's), (20, 36605), (23, 36584), (39, 36467), (65, 36308), (79, 36209), (83, 36194), (100, 36065), (104, 36020),

Gene: DBQu4n_56 Start: 36613, Stop: 35906, Start Num: 14

Candidate Starts for DBQu4n_56:

(Start: 14 @36613 has 104 MA's), (20, 36586), (23, 36565), (39, 36448), (65, 36289), (79, 36190), (83, 36175), (100, 36046), (104, 36001),

Gene: Dalmatian_55 Start: 37140, Stop: 36469, Start Num: 14

Candidate Starts for Dalmatian_55:

(9, 37302), (Start: 14 @37140 has 104 MA's), (33, 37008), (46, 36951), (51, 36930), (65, 36822), (79, 36723), (89, 36660), (97, 36612),

Gene: DarthPhader_50 Start: 37443, Stop: 36769, Start Num: 15

Candidate Starts for DarthPhader_50:

(1, 37953), (3, 37785), (Start: 15 @37443 has 34 MA's), (42, 37272), (52, 37227), (63, 37140), (65, 37128), (72, 37059), (77, 37029), (97, 36915), (107, 36831), (121, 36789),

Gene: Datway_50 Start: 36276, Stop: 35392, Start Num: 12

Candidate Starts for Datway_50:

(Start: 12 @36276 has 135 MA's), (18, 36255), (41, 36102), (49, 36066), (63, 35964), (65, 35952), (90, 35802), (104, 35670), (110, 35631), (126, 35562), (130, 35535), (135, 35487), (138, 35451), (139, 35412), (140, 35409),

Gene: Deano_50 Start: 36349, Stop: 35453, Start Num: 12

Candidate Starts for Deano_50:

(Start: 12 @36349 has 135 MA's), (Start: 16 @36337 has 2 MA's), (18, 36328), (19, 36325), (30, 36247), (33, 36211), (41, 36175), (49, 36139), (56, 36079), (63, 36037), (65, 36025), (104, 35731), (110, 35692), (126, 35623), (129, 35602), (130, 35596), (135, 35548), (140, 35470),

Gene: Deloris_55 Start: 37041, Stop: 36280, Start Num: 14

Candidate Starts for Deloris_55:

(9, 37206), (Start: 14 @37041 has 104 MA's), (24, 36987), (32, 36906), (64, 36720), (65, 36714), (110, 36408), (130, 36327), (134, 36288),

Gene: Dhanush_51 Start: 36344, Stop: 35448, Start Num: 12

Candidate Starts for Dhanush_51:

(Start: 12 @36344 has 135 MA's), (Start: 16 @36332 has 2 MA's), (18, 36323), (19, 36320), (30, 36242), (33, 36206), (41, 36170), (49, 36134), (63, 36032), (65, 36020), (104, 35726), (110, 35687), (126, 35618), (129, 35597), (130, 35591), (135, 35543), (140, 35465),

Gene: Dignity_56 Start: 37337, Stop: 36651, Start Num: 14

Candidate Starts for Dignity_56:

(1, 37838), (9, 37499), (Start: 14 @37337 has 104 MA's), (40, 37166), (43, 37154), (44, 37148), (64, 37016), (73, 36947),

Gene: DirtyDunning_50 Start: 36353, Stop: 35457, Start Num: 12

Candidate Starts for DirtyDunning_50:

(Start: 12 @36353 has 135 MA's), (Start: 16 @36341 has 2 MA's), (18, 36332), (19, 36329), (30, 36251), (33, 36215), (41, 36179), (49, 36143), (56, 36083), (63, 36041), (65, 36029), (68, 35996), (104, 35735), (110, 35696), (126, 35627), (129, 35606), (130, 35600), (135, 35552), (139, 35477), (140, 35474),

Gene: Drake55_56 Start: 37230, Stop: 36535, Start Num: 14

Candidate Starts for Drake55_56:

(5, 37461), (6, 37437), (Start: 14 @37230 has 104 MA's), (39, 37068), (52, 37008), (65, 36909), (73, 36840), (77, 36813), (83, 36795), (97, 36693),

Gene: DroogsArmy_48 Start: 37473, Stop: 36574, Start Num: 13

Candidate Starts for DroogsArmy_48:

(Start: 13 @37473 has 5 MA's), (23, 37431), (29, 37389), (45, 37287), (59, 37194), (63, 37164), (69, 37110), (72, 37086), (84, 37032), (86, 37011), (91, 36975), (103, 36861), (104, 36858), (110, 36819), (115, 36804), (117, 36789), (124, 36750), (127, 36738), (133, 36690), (135, 36669), (138, 36633), (139, 36594), (140, 36591), (141, 36579),

Gene: Druantia_51 Start: 36344, Stop: 35448, Start Num: 12

Candidate Starts for Druantia_51:

(Start: 12 @36344 has 135 MA's), (Start: 16 @36332 has 2 MA's), (18, 36323), (19, 36320), (30, 36242), (33, 36206), (41, 36170), (49, 36134), (63, 36032), (65, 36020), (104, 35726), (110, 35687), (126, 35618), (129, 35597), (130, 35591), (135, 35543), (140, 35465),

Gene: DudeLittle_53 Start: 36906, Stop: 36235, Start Num: 14

Candidate Starts for DudeLittle_53:

(9, 37068), (Start: 14 @36906 has 104 MA's), (33, 36774), (46, 36717), (51, 36696), (65, 36588), (79, 36489), (89, 36426), (97, 36378),

Gene: Duplo_56 Start: 36669, Stop: 35962, Start Num: 14

Candidate Starts for Duplo_56:

(Start: 14 @36669 has 104 MA's), (20, 36642), (23, 36621), (39, 36504), (65, 36345), (79, 36246), (83, 36231), (100, 36102), (104, 36057),

Gene: EZMoney23_52 Start: 36664, Stop: 35993, Start Num: 15

Candidate Starts for EZMoney23_52:

(Start: 15 @36664 has 34 MA's), (41, 36499), (46, 36478), (49, 36463), (65, 36349), (66, 36340), (77, 36253), (97, 36139), (107, 36055),

Gene: Eagle_51 Start: 36366, Stop: 35470, Start Num: 12

Candidate Starts for Eagle_51:

(Start: 12 @36366 has 135 MA's), (Start: 16 @36354 has 2 MA's), (18, 36345), (19, 36342), (30, 36264), (33, 36228), (41, 36192), (49, 36156), (63, 36054), (65, 36042), (104, 35748), (110, 35709), (126, 35640), (129, 35619), (130, 35613), (135, 35565), (140, 35487),

Gene: EagleEye_56 Start: 36467, Stop: 35742, Start Num: 15

Candidate Starts for EagleEye_56:

(3, 36842), (Start: 15 @36467 has 34 MA's), (23, 36431), (28, 36392), (34, 36332), (39, 36311), (43, 36296), (46, 36281), (49, 36266), (50, 36263), (57, 36203), (64, 36158), (65, 36152), (66, 36143), (82, 36050), (102, 35888), (106, 35873),

Gene: Eapen_51 Start: 36336, Stop: 35440, Start Num: 12

Candidate Starts for Eapen_51:

(Start: 12 @36336 has 135 MA's), (Start: 16 @36324 has 2 MA's), (18, 36315), (19, 36312), (30, 36234), (41, 36162), (49, 36126), (56, 36066), (63, 36024), (65, 36012), (104, 35718), (110, 35679), (126, 35610), (129, 35589), (130, 35583), (135, 35535), (140, 35457),

Gene: Ebony_53 Start: 35774, Stop: 35082, Start Num: 14

Candidate Starts for Ebony_53:

(Start: 14 @35774 has 104 MA's), (18, 35765), (29, 35696), (77, 35363), (97, 35237),

Gene: Echild_54 Start: 36212, Stop: 35529, Start Num: 14

Candidate Starts for Echild_54:

(9, 36377), (Start: 14 @36212 has 104 MA's), (33, 36080), (46, 36023), (65, 35894), (89, 35735), (97, 35687),

Gene: Equemioh13_55 Start: 37053, Stop: 36358, Start Num: 14

Candidate Starts for Equemioh13_55:

(6, 37260), (Start: 14 @37053 has 104 MA's), (39, 36891), (52, 36831), (65, 36732), (73, 36663), (77, 36636), (83, 36618), (97, 36516),

Gene: Eris_50 Start: 36341, Stop: 35445, Start Num: 12

Candidate Starts for Eris_50:

(Start: 12 @36341 has 135 MA's), (Start: 16 @36329 has 2 MA's), (18, 36320), (19, 36317), (30, 36239), (41, 36167), (49, 36131), (56, 36071), (63, 36029), (65, 36017), (104, 35723), (110, 35684), (126, 35615), (129, 35594), (130, 35588), (135, 35540), (140, 35462),

Gene: Eros_51 Start: 36343, Stop: 35447, Start Num: 12

Candidate Starts for Eros_51:

(Start: 12 @36343 has 135 MA's), (Start: 16 @36331 has 2 MA's), (18, 36322), (19, 36319), (30, 36241), (33, 36205), (41, 36169), (49, 36133), (63, 36031), (65, 36019), (104, 35725), (110, 35686), (126, 35617), (129, 35596), (130, 35590), (135, 35542), (140, 35464),

Gene: Et2Brutus_52 Start: 35737, Stop: 35045, Start Num: 14

Candidate Starts for Et2Brutus_52:

(Start: 14 @35737 has 104 MA's), (18, 35728), (29, 35659), (38, 35587), (77, 35326), (97, 35200),

Gene: Eurydice_52 Start: 36338, Stop: 35442, Start Num: 12

Candidate Starts for Eurydice_52:

(Start: 12 @36338 has 135 MA's), (Start: 16 @36326 has 2 MA's), (18, 36317), (19, 36314), (30, 36236), (33, 36200), (41, 36164), (49, 36128), (63, 36026), (65, 36014), (104, 35720), (110, 35681), (126, 35612), (129, 35591), (130, 35585), (135, 35537), (140, 35459),

Gene: EvilGenius_56 Start: 38515, Stop: 37847, Start Num: 15

Candidate Starts for EvilGenius_56:

(1, 39019), (Start: 15 @38515 has 34 MA's), (41, 38350), (45, 38335), (46, 38329), (52, 38299), (73, 38131), (77, 38104), (97, 37990),

Gene: Fameo_54 Start: 37094, Stop: 36408, Start Num: 14

Candidate Starts for Fameo_54:

(9, 37256), (Start: 14 @37094 has 104 MA's), (21, 37055), (40, 36923), (43, 36911), (44, 36905), (64, 36773), (73, 36704), (100, 36533), (103, 36491), (104, 36488), (107, 36467),

Gene: Fibonacci_53 Start: 35743, Stop: 35051, Start Num: 14

Candidate Starts for Fibonacci_53:

(Start: 14 @35743 has 104 MA's), (18, 35734), (29, 35665), (38, 35593), (77, 35332), (97, 35206),

Gene: FiringLine_54 Start: 36744, Stop: 36052, Start Num: 14

Candidate Starts for FiringLine_54:

(Start: 14 @36744 has 104 MA's), (23, 36696), (39, 36579), (73, 36351), (79, 36321), (83, 36306), (84, 36297), (100, 36177),

Gene: First_0056 Start: 37304, Stop: 36543, Start Num: 14

Candidate Starts for First_0056:

(9, 37469), (Start: 14 @37304 has 104 MA's), (24, 37250), (32, 37169), (64, 36983), (65, 36977), (66, 36968), (110, 36671), (130, 36590), (134, 36551),

Gene: Flare16_54 Start: 36812, Stop: 36117, Start Num: 14

Candidate Starts for Flare16_54:

(5, 37043), (6, 37019), (7, 37004), (Start: 14 @36812 has 104 MA's), (39, 36650), (52, 36590), (65, 36491), (73, 36422), (77, 36395), (83, 36377), (97, 36275), (107, 36191),

Gene: Flaverint_54 Start: 36201, Stop: 35509, Start Num: 14

Candidate Starts for Flaverint_54:

(Start: 14 @36201 has 104 MA's), (18, 36192), (29, 36123), (38, 36051), (77, 35790), (97, 35664),

Gene: Florean_51 Start: 36340, Stop: 35444, Start Num: 12

Candidate Starts for Florean_51:

(Start: 12 @36340 has 135 MA's), (Start: 16 @36328 has 2 MA's), (18, 36319), (19, 36316), (30, 36238), (33, 36202), (41, 36166), (49, 36130), (63, 36028), (65, 36016), (104, 35722), (110, 35683), (126, 35614), (129, 35593), (130, 35587), (135, 35539), (140, 35461),

Gene: Flux_51 Start: 36340, Stop: 35444, Start Num: 12

Candidate Starts for Flux_51:

(Start: 12 @36340 has 135 MA's), (Start: 16 @36328 has 2 MA's), (18, 36319), (19, 36316), (30, 36238), (41, 36166), (49, 36130), (56, 36070), (63, 36028), (65, 36016), (104, 35722), (110, 35683),

(126, 35614), (129, 35593), (130, 35587), (135, 35539), (140, 35461),

Gene: FlyCatcher_57 Start: 38873, Stop: 37983, Start Num: 13

Candidate Starts for FlyCatcher_57:

(Start: 13 @38873 has 5 MA's), (29, 38789), (37, 38717), (48, 38675), (54, 38633), (62, 38567), (63, 38564), (73, 38483), (80, 38453), (84, 38432), (85, 38420), (87, 38408), (91, 38375), (98, 38321), (99, 38309), (101, 38279), (104, 38258), (110, 38219), (115, 38204), (116, 38201), (130, 38126), (135, 38078), (138, 38042), (140, 38000),

Gene: Funston_50 Start: 36341, Stop: 35445, Start Num: 12

Candidate Starts for Funston_50:

(Start: 12 @36341 has 135 MA's), (Start: 16 @36329 has 2 MA's), (18, 36320), (19, 36317), (30, 36239), (41, 36167), (49, 36131), (56, 36071), (63, 36029), (65, 36017), (104, 35723), (110, 35684), (126, 35615), (129, 35594), (130, 35588), (135, 35540), (140, 35462),

Gene: Gadost_51 Start: 36345, Stop: 35449, Start Num: 12

Candidate Starts for Gadost_51:

(Start: 12 @36345 has 135 MA's), (Start: 16 @36333 has 2 MA's), (18, 36324), (19, 36321), (30, 36243), (41, 36171), (49, 36135), (56, 36075), (63, 36033), (65, 36021), (104, 35727), (110, 35688), (126, 35619), (129, 35598), (130, 35592), (135, 35544), (140, 35466),

Gene: Gail_58 Start: 37956, Stop: 37207, Start Num: 15

Candidate Starts for Gail_58:

(Start: 15 @37956 has 34 MA's), (29, 37878), (33, 37827), (39, 37800), (46, 37770), (49, 37755), (64, 37647), (65, 37641), (72, 37575), (73, 37572), (97, 37434), (102, 37377),

Gene: Georgie2_55 Start: 36789, Stop: 36097, Start Num: 14

Candidate Starts for Georgie2_55:

(1, 37290), (Start: 14 @36789 has 104 MA's), (23, 36741), (39, 36624), (73, 36396), (79, 36366), (83, 36351), (84, 36342), (100, 36222),

Gene: Gilberta_54 Start: 36194, Stop: 35502, Start Num: 14

Candidate Starts for Gilberta_54:

(Start: 14 @36194 has 104 MA's), (18, 36185), (29, 36116), (38, 36044), (77, 35783), (97, 35657),

Gene: HINdeR_47 Start: 37135, Stop: 36236, Start Num: 13

Candidate Starts for HINdeR_47:

(Start: 13 @37135 has 5 MA's), (23, 37093), (26, 37066), (29, 37051), (33, 37000), (45, 36949), (55, 36877), (63, 36826), (72, 36748), (84, 36694), (87, 36670), (91, 36637), (104, 36520), (110, 36481), (115, 36466), (123, 36415), (124, 36412), (127, 36400), (130, 36379), (135, 36331), (138, 36295), (139, 36256), (140, 36253), (141, 36241),

Gene: HamSlice_50 Start: 36339, Stop: 35443, Start Num: 12

Candidate Starts for HamSlice_50:

(Start: 12 @36339 has 135 MA's), (Start: 16 @36327 has 2 MA's), (18, 36318), (19, 36315), (30, 36237), (41, 36165), (49, 36129), (56, 36069), (63, 36027), (65, 36015), (104, 35721), (110, 35682), (126, 35613), (129, 35592), (130, 35586), (135, 35538), (140, 35460),

Gene: Happiness_50 Start: 36360, Stop: 35464, Start Num: 12

Candidate Starts for Happiness_50:

(Start: 12 @36360 has 135 MA's), (Start: 16 @36348 has 2 MA's), (18, 36339), (19, 36336), (30, 36258), (41, 36186), (49, 36150), (63, 36048), (65, 36036), (104, 35742), (110, 35703), (126, 35634), (129, 35613), (130, 35607), (135, 35559), (140, 35481),

Gene: HarryHoudini_55 Start: 37239, Stop: 36544, Start Num: 14

Candidate Starts for HarryHoudini_55:

(5, 37470), (6, 37446), (Start: 14 @37239 has 104 MA's), (39, 37077), (52, 37017), (65, 36918), (73, 36849), (77, 36822), (83, 36804), (97, 36702),

Gene: Heffalump_53 Start: 37562, Stop: 36876, Start Num: 14

Candidate Starts for Heffalump_53:

(9, 37724), (Start: 14 @37562 has 104 MA's), (21, 37523), (40, 37391), (43, 37379), (44, 37373), (64, 37241), (73, 37172), (100, 37001), (103, 36959), (104, 36956),

Gene: Holli_50 Start: 36131, Stop: 35235, Start Num: 12

Candidate Starts for Holli_50:

(Start: 12 @36131 has 135 MA's), (Start: 16 @36119 has 2 MA's), (18, 36110), (19, 36107), (30, 36029), (33, 35993), (41, 35957), (49, 35921), (63, 35819), (65, 35807), (104, 35513), (110, 35474), (126, 35405), (129, 35384), (130, 35378), (135, 35330), (140, 35252),

Gene: Houdini22_51 Start: 36345, Stop: 35449, Start Num: 12

Candidate Starts for Houdini22_51:

(Start: 12 @36345 has 135 MA's), (Start: 16 @36333 has 2 MA's), (18, 36324), (19, 36321), (30, 36243), (41, 36171), (49, 36135), (56, 36075), (63, 36033), (65, 36021), (104, 35727), (110, 35688), (126, 35619), (129, 35598), (130, 35592), (135, 35544), (140, 35466),

Gene: Hutc2_53 Start: 35743, Stop: 35051, Start Num: 14

Candidate Starts for Hutc2_53:

(Start: 14 @35743 has 104 MA's), (18, 35734), (29, 35665), (38, 35593), (77, 35332), (97, 35206),

Gene: Huxley_51 Start: 36402, Stop: 35506, Start Num: 12

Candidate Starts for Huxley_51:

(Start: 12 @36402 has 135 MA's), (Start: 16 @36390 has 2 MA's), (18, 36381), (19, 36378), (30, 36300), (33, 36264), (41, 36228), (49, 36192), (63, 36090), (65, 36078), (104, 35784), (110, 35745), (126, 35676), (129, 35655), (130, 35649), (135, 35601), (140, 35523),

Gene: ICleared_51 Start: 36370, Stop: 35474, Start Num: 12

Candidate Starts for ICleared_51:

(Start: 12 @36370 has 135 MA's), (Start: 16 @36358 has 2 MA's), (18, 36349), (19, 36346), (30, 36268), (33, 36232), (41, 36196), (49, 36160), (63, 36058), (65, 36046), (104, 35752), (110, 35713), (126, 35644), (129, 35623), (130, 35617), (135, 35569), (140, 35491),

Gene: Iceman_51 Start: 36627, Stop: 35731, Start Num: 12

Candidate Starts for Iceman_51:

(Start: 12 @36627 has 135 MA's), (Start: 16 @36615 has 2 MA's), (18, 36606), (19, 36603), (30, 36525), (41, 36453), (49, 36417), (56, 36357), (63, 36315), (65, 36303), (104, 36009), (110, 35970), (126, 35901), (129, 35880), (130, 35874), (135, 35826), (140, 35748),

Gene: Insomnia_54 Start: 36254, Stop: 35562, Start Num: 14

Candidate Starts for Insomnia_54:

(Start: 14 @36254 has 104 MA's), (18, 36245), (29, 36176), (38, 36104), (77, 35843), (97, 35717),

Gene: Iracema64_52 Start: 36605, Stop: 35709, Start Num: 12

Candidate Starts for Iracema64_52:

(Start: 12 @36605 has 135 MA's), (Start: 16 @36593 has 2 MA's), (18, 36584), (19, 36581), (30, 36503), (41, 36431), (49, 36395), (56, 36335), (63, 36293), (65, 36281), (104, 35987), (110, 35948),

(126, 35879), (129, 35858), (130, 35852), (135, 35804), (140, 35726),

Gene: IronMan_54 Start: 37945, Stop: 37220, Start Num: 15

Candidate Starts for IronMan_54:

(5, 38179), (Start: 15 @37945 has 34 MA's), (23, 37909), (29, 37867), (33, 37816), (40, 37786), (43, 37774), (46, 37759), (63, 37642), (65, 37630), (92, 37450), (97, 37420), (102, 37363), (114, 37312),

Gene: Iwokeuplikedis_57 Start: 36868, Stop: 36170, Start Num: 14

Candidate Starts for Iwokeuplikedis_57:

(9, 37033), (Start: 14 @36868 has 104 MA's), (52, 36637), (59, 36580), (65, 36538), (73, 36469), (77, 36442), (97, 36328),

Gene: Jaan_54 Start: 38114, Stop: 37392, Start Num: 14

Candidate Starts for Jaan_54:

(5, 38345), (Start: 14 @38114 has 104 MA's), (33, 37985), (52, 37898), (65, 37799), (66, 37790), (73, 37730), (75, 37724), (79, 37703), (97, 37592), (102, 37535), (114, 37484),

Gene: Jabith_54 Start: 36255, Stop: 35563, Start Num: 14

Candidate Starts for Jabith_54:

(Start: 14 @36255 has 104 MA's), (18, 36246), (29, 36177), (38, 36105), (77, 35844), (97, 35718),

Gene: Jaykayelowell_49 Start: 36334, Stop: 35438, Start Num: 12

Candidate Starts for Jaykayelowell_49:

(Start: 12 @36334 has 135 MA's), (Start: 16 @36322 has 2 MA's), (18, 36313), (19, 36310), (30, 36232), (33, 36196), (41, 36160), (49, 36124), (63, 36022), (65, 36010), (104, 35716), (110, 35677), (126, 35608), (129, 35587), (130, 35581), (135, 35533), (140, 35455),

Gene: Jeeves_58 Start: 36728, Stop: 35979, Start Num: 15

Candidate Starts for Jeeves_58:

(Start: 15 @36728 has 34 MA's), (41, 36563), (46, 36542), (59, 36455), (64, 36419), (65, 36413), (72, 36347), (77, 36317), (97, 36203), (102, 36146), (113, 36095), (115, 36089),

Gene: Jerm_56 Start: 37329, Stop: 36643, Start Num: 14

Candidate Starts for Jerm_56:

(Start: 14 @37329 has 104 MA's), (23, 37278), (40, 37158), (43, 37146), (44, 37140), (64, 37008), (73, 36939), (104, 36723),

Gene: JetBlade_51 Start: 36335, Stop: 35439, Start Num: 12

Candidate Starts for JetBlade_51:

(Start: 12 @36335 has 135 MA's), (Start: 16 @36323 has 2 MA's), (18, 36314), (19, 36311), (30, 36233), (33, 36197), (41, 36161), (49, 36125), (56, 36065), (63, 36023), (65, 36011), (104, 35717), (110, 35678), (126, 35609), (129, 35588), (130, 35582), (135, 35534), (140, 35456),

Gene: JoongJeon_50 Start: 36338, Stop: 35442, Start Num: 12

Candidate Starts for JoongJeon_50:

(Start: 12 @36338 has 135 MA's), (Start: 16 @36326 has 2 MA's), (18, 36317), (19, 36314), (30, 36236), (41, 36164), (49, 36128), (56, 36068), (63, 36026), (65, 36014), (104, 35720), (110, 35681), (126, 35612), (129, 35591), (130, 35585), (135, 35537), (140, 35459),

Gene: Joselito_54 Start: 36203, Stop: 35511, Start Num: 14

Candidate Starts for Joselito_54:

(Start: 14 @36203 has 104 MA's), (18, 36194), (29, 36125), (38, 36053), (77, 35792), (97, 35666),

Gene: JoshKayV_56 Start: 37405, Stop: 36737, Start Num: 15

Candidate Starts for JoshKayV_56:

(1, 37909), (Start: 15 @37405 has 34 MA's), (41, 37240), (45, 37225), (46, 37219), (52, 37189), (97, 36880),

Gene: Journey13_48 Start: 35135, Stop: 34443, Start Num: 14

Candidate Starts for Journey13_48:

(4, 35369), (Start: 14 @35135 has 104 MA's), (24, 35087), (30, 35036), (39, 34973), (43, 34958), (59, 34856), (65, 34814), (73, 34745), (75, 34739), (97, 34604),

Gene: Jsquared_52 Start: 35755, Stop: 35051, Start Num: 14

Candidate Starts for Jsquared_52:

(3, 36088), (9, 35920), (Start: 14 @35755 has 104 MA's), (81, 35332), (89, 35272), (104, 35146), (120, 35083),

Gene: KFPoly_50 Start: 36335, Stop: 35439, Start Num: 12

Candidate Starts for KFPoly_50:

(Start: 12 @36335 has 135 MA's), (Start: 16 @36323 has 2 MA's), (18, 36314), (19, 36311), (30, 36233), (41, 36161), (49, 36125), (56, 36065), (63, 36023), (65, 36011), (104, 35717), (110, 35678), (126, 35609), (129, 35588), (130, 35582), (135, 35534), (140, 35456),

Gene: Kalpine_52 Start: 37009, Stop: 36338, Start Num: 15

Candidate Starts for Kalpine_52:

(Start: 15 @37009 has 34 MA's), (52, 36793), (57, 36745), (79, 36595), (97, 36484), (107, 36400),

Gene: Kamy_51 Start: 36343, Stop: 35447, Start Num: 12

Candidate Starts for Kamy_51:

(Start: 12 @36343 has 135 MA's), (Start: 16 @36331 has 2 MA's), (18, 36322), (19, 36319), (30, 36241), (41, 36169), (49, 36133), (63, 36031), (65, 36019), (104, 35725), (110, 35686), (126, 35617), (129, 35596), (130, 35590), (135, 35542), (140, 35464),

Gene: Katalie136_50 Start: 36290, Stop: 35406, Start Num: 12

Candidate Starts for Katalie136_50:

(Start: 12 @36290 has 135 MA's), (18, 36269), (41, 36116), (49, 36080), (63, 35978), (65, 35966), (90, 35816), (104, 35684), (110, 35645), (126, 35576), (130, 35549), (135, 35501), (138, 35465), (139, 35426), (140, 35423),

Gene: Kerberos_56 Start: 36631, Stop: 35924, Start Num: 14

Candidate Starts for Kerberos_56:

(Start: 14 @36631 has 104 MA's), (20, 36604), (23, 36583), (39, 36466), (65, 36307), (79, 36208), (83, 36193), (100, 36064), (104, 36019),

Gene: Kimona_51 Start: 34953, Stop: 34051, Start Num: 11

Candidate Starts for Kimona_51:

(Start: 11 @34953 has 1 MA's), (23, 34899), (25, 34878), (63, 34629), (78, 34533), (96, 34419), (98, 34398), (104, 34335), (110, 34296), (115, 34281), (117, 34266), (118, 34257), (130, 34194), (132, 34179), (133, 34167), (135, 34146), (136, 34143), (138, 34110), (140, 34068),

Gene: KingCyrus_56 Start: 38510, Stop: 37842, Start Num: 15

Candidate Starts for KingCyrus_56:

(1, 39014), (Start: 15 @38510 has 34 MA's), (41, 38345), (45, 38330), (46, 38324), (52, 38294), (73, 38126), (77, 38099), (97, 37985),

Gene: Kingmustik0402_51 Start: 36330, Stop: 35434, Start Num: 12

Candidate Starts for Kingmustik0402_51:

(Start: 12 @36330 has 135 MA's), (Start: 16 @36318 has 2 MA's), (18, 36309), (19, 36306), (30, 36228), (33, 36192), (41, 36156), (49, 36120), (63, 36018), (65, 36006), (104, 35712), (110, 35673), (126, 35604), (129, 35583), (130, 35577), (135, 35529), (140, 35451),

Gene: Kinmap_52 Start: 35304, Stop: 34558, Start Num: 14

Candidate Starts for Kinmap_52:

(9, 35451), (Start: 14 @35304 has 104 MA's), (23, 35259), (50, 35091), (64, 34986), (65, 34980), (77, 34884), (97, 34758), (106, 34686), (112, 34659), (128, 34605), (131, 34581),

Gene: Koan_49 Start: 36341, Stop: 35445, Start Num: 12

Candidate Starts for Koan_49:

(Start: 12 @36341 has 135 MA's), (Start: 16 @36329 has 2 MA's), (18, 36320), (19, 36317), (30, 36239), (33, 36203), (41, 36167), (49, 36131), (63, 36029), (65, 36017), (104, 35723), (110, 35684), (126, 35615), (129, 35594), (130, 35588), (135, 35540), (140, 35462),

Gene: Koduck_55 Start: 36040, Stop: 35336, Start Num: 14

Candidate Starts for Koduck_55:

(Start: 14 @36040 has 104 MA's), (35, 35893), (52, 35815), (65, 35716), (81, 35617), (89, 35557), (104, 35431), (120, 35368),

Gene: Koreni_50 Start: 36022, Stop: 35126, Start Num: 12

Candidate Starts for Koreni_50:

(Start: 12 @36022 has 135 MA's), (Start: 16 @36010 has 2 MA's), (18, 36001), (19, 35998), (30, 35920), (33, 35884), (41, 35848), (49, 35812), (63, 35710), (65, 35698), (104, 35404), (110, 35365), (126, 35296), (129, 35275), (130, 35269), (135, 35221), (140, 35143),

Gene: Kratak_51 Start: 36496, Stop: 35600, Start Num: 12

Candidate Starts for Kratak_51:

(Start: 12 @36496 has 135 MA's), (Start: 16 @36484 has 2 MA's), (18, 36475), (19, 36472), (30, 36394), (33, 36358), (41, 36322), (49, 36286), (63, 36184), (65, 36172), (104, 35878), (110, 35839), (126, 35770), (129, 35749), (130, 35743), (135, 35695), (136, 35692), (138, 35659), (139, 35620), (140, 35617),

Gene: Kremtemulon_51 Start: 36289, Stop: 35393, Start Num: 12

Candidate Starts for Kremtemulon_51:

(Start: 12 @36289 has 135 MA's), (Start: 16 @36277 has 2 MA's), (18, 36268), (19, 36265), (30, 36187), (33, 36151), (41, 36115), (49, 36079), (56, 36019), (63, 35977), (65, 35965), (104, 35671), (110, 35632), (126, 35563), (129, 35542), (130, 35536), (135, 35488), (140, 35410),

Gene: Kyee_51 Start: 36339, Stop: 35443, Start Num: 12

Candidate Starts for Kyee_51:

(Start: 12 @36339 has 135 MA's), (Start: 16 @36327 has 2 MA's), (18, 36318), (19, 36315), (30, 36237), (41, 36165), (49, 36129), (56, 36069), (63, 36027), (65, 36015), (104, 35721), (110, 35682), (126, 35613), (129, 35592), (130, 35586), (135, 35538), (140, 35460),

Gene: L5_53 Start: 36115, Stop: 35411, Start Num: 14

Candidate Starts for L5_53:

(Start: 14 @36115 has 104 MA's), (35, 35968), (52, 35890), (65, 35791), (81, 35692), (89, 35632), (104, 35506), (120, 35443),

Gene: LHTSCC_53 Start: 36777, Stop: 35881, Start Num: 12

Candidate Starts for LHTSCC_53:

(Start: 12 @36777 has 135 MA's), (Start: 16 @36765 has 2 MA's), (18, 36756), (19, 36753), (30, 36675), (41, 36603), (49, 36567), (63, 36465), (65, 36453), (104, 36159), (110, 36120), (126, 36051), (129, 36030), (130, 36024), (135, 35976), (140, 35898),

Gene: LadyBird_59 Start: 37733, Stop: 36972, Start Num: 14

Candidate Starts for LadyBird_59:

(9, 37898), (Start: 14 @37733 has 104 MA's), (24, 37679), (32, 37598), (58, 37454), (64, 37412), (65, 37406), (110, 37100), (130, 37019), (134, 36980),

Gene: Landor_54 Start: 38023, Stop: 37298, Start Num: 15

Candidate Starts for Landor_54:

(5, 38257), (Start: 15 @38023 has 34 MA's), (29, 37945), (33, 37894), (40, 37864), (43, 37852), (47, 37834), (64, 37714), (65, 37708), (73, 37639), (79, 37609), (86, 37564), (92, 37528), (97, 37498), (102, 37441), (114, 37390),

Gene: LappelDuVide_51 Start: 36340, Stop: 35444, Start Num: 12

Candidate Starts for LappelDuVide_51:

(Start: 12 @36340 has 135 MA's), (Start: 16 @36328 has 2 MA's), (18, 36319), (19, 36316), (30, 36238), (33, 36202), (41, 36166), (49, 36130), (56, 36070), (63, 36028), (65, 36016), (104, 35722), (110, 35683), (126, 35614), (129, 35593), (130, 35587), (135, 35539), (140, 35461),

Gene: Larenn_53 Start: 36922, Stop: 36218, Start Num: 14

Candidate Starts for Larenn_53:

(Start: 14 @36922 has 104 MA's), (32, 36793), (64, 36607), (65, 36601), (83, 36487),

Gene: Lemur_51 Start: 36338, Stop: 35442, Start Num: 12

Candidate Starts for Lemur_51:

(Start: 12 @36338 has 135 MA's), (Start: 16 @36326 has 2 MA's), (18, 36317), (19, 36314), (30, 36236), (33, 36200), (41, 36164), (49, 36128), (56, 36068), (63, 36026), (65, 36014), (104, 35720), (110, 35681), (126, 35612), (129, 35591), (130, 35585), (135, 35537), (140, 35459),

Gene: LeoAvram_51 Start: 36341, Stop: 35445, Start Num: 12

Candidate Starts for LeoAvram_51:

(Start: 12 @36341 has 135 MA's), (Start: 16 @36329 has 2 MA's), (18, 36320), (19, 36317), (30, 36239), (33, 36203), (41, 36167), (49, 36131), (63, 36029), (65, 36017), (104, 35723), (110, 35684), (126, 35615), (129, 35594), (130, 35588), (135, 35540), (140, 35462),

Gene: Leogania_54 Start: 37949, Stop: 37275, Start Num: 15

Candidate Starts for Leogania_54:

(9, 38117), (Start: 15 @37949 has 34 MA's), (23, 37913), (52, 37733), (59, 37676), (65, 37634), (66, 37625), (73, 37565), (79, 37535), (84, 37511), (89, 37472), (97, 37424),

Gene: Leviathan_56 Start: 37386, Stop: 36700, Start Num: 14

Candidate Starts for Leviathan_56:

(Start: 14 @37386 has 104 MA's), (23, 37335), (40, 37215), (43, 37203), (44, 37197), (64, 37065), (73, 36996), (104, 36780),

Gene: LilTurb_55 Start: 37210, Stop: 36524, Start Num: 14

Candidate Starts for LilTurb_55:

(Start: 14 @37210 has 104 MA's), (23, 37159), (40, 37039), (43, 37027), (44, 37021), (64, 36889), (73, 36820), (104, 36604),

Gene: LittleB_51 Start: 36342, Stop: 35446, Start Num: 12

Candidate Starts for LittleB_51:

(Start: 12 @36342 has 135 MA's), (Start: 16 @36330 has 2 MA's), (18, 36321), (19, 36318), (30, 36240), (33, 36204), (41, 36168), (49, 36132), (56, 36072), (63, 36030), (65, 36018), (104, 35724), (110, 35685), (126, 35616), (129, 35595), (130, 35589), (135, 35541), (140, 35463),

Gene: LittleGuy_51 Start: 36237, Stop: 35341, Start Num: 12

Candidate Starts for LittleGuy_51:

(Start: 12 @36237 has 135 MA's), (Start: 16 @36225 has 2 MA's), (18, 36216), (19, 36213), (30, 36135), (41, 36063), (49, 36027), (56, 35967), (63, 35925), (65, 35913), (104, 35619), (110, 35580), (126, 35511), (129, 35490), (130, 35484), (135, 35436), (140, 35358),

Gene: LochMonster_52 Start: 36577, Stop: 35681, Start Num: 12

Candidate Starts for LochMonster_52:

(Start: 12 @36577 has 135 MA's), (Start: 16 @36565 has 2 MA's), (18, 36556), (19, 36553), (30, 36475), (33, 36439), (41, 36403), (49, 36367), (63, 36265), (65, 36253), (104, 35959), (110, 35920), (126, 35851), (129, 35830), (130, 35824), (135, 35776), (140, 35698),

Gene: Lökk_51 Start: 36207, Stop: 35464, Start Num: 15

Candidate Starts for Lökk_51:

(2, 36612), (Start: 14 @36210 has 104 MA's), (Start: 15 @36207 has 34 MA's), (27, 36141), (49, 36006), (55, 35955), (61, 35913), (71, 35835), (97, 35688), (102, 35631), (114, 35580), (122, 35550), (130, 35511), (134, 35472),

Gene: Lorenzo_51 Start: 36341, Stop: 35445, Start Num: 12

Candidate Starts for Lorenzo_51:

(Start: 12 @36341 has 135 MA's), (Start: 16 @36329 has 2 MA's), (18, 36320), (19, 36317), (30, 36239), (33, 36203), (41, 36167), (49, 36131), (63, 36029), (65, 36017), (104, 35723), (110, 35684), (126, 35615), (129, 35594), (130, 35588), (135, 35540), (140, 35462),

Gene: Loser_56 Start: 37765, Stop: 37091, Start Num: 14

Candidate Starts for Loser_56:

(Start: 14 @37765 has 104 MA's), (33, 37633), (39, 37606), (46, 37576), (61, 37468), (65, 37447), (72, 37381), (73, 37378), (79, 37348), (97, 37237), (107, 37153),

Gene: Luchador_58 Start: 38522, Stop: 37764, Start Num: 15

Candidate Starts for Luchador_58:

(Start: 15 @38522 has 34 MA's), (50, 38303), (52, 38291), (55, 38255), (63, 38204), (65, 38192), (66, 38183), (82, 38093), (92, 38012), (102, 37934), (105, 37922), (118, 37865),

Gene: Lucivia_54 Start: 36252, Stop: 35560, Start Num: 14

Candidate Starts for Lucivia_54:

(Start: 14 @36252 has 104 MA's), (18, 36243), (29, 36174), (38, 36102), (77, 35841), (97, 35715),

Gene: Lucyedi_55 Start: 36663, Stop: 35938, Start Num: 15

Candidate Starts for Lucyedi_55:

(3, 37038), (Start: 15 @36663 has 34 MA's), (23, 36627), (28, 36588), (34, 36528), (39, 36507), (43, 36492), (46, 36477), (49, 36462), (50, 36459), (57, 36399), (64, 36354), (65, 36348), (66, 36339), (82, 36246), (102, 36084), (106, 36069),

Gene: Lunsford_52 Start: 36335, Stop: 35439, Start Num: 12

Candidate Starts for Lunsford_52:

(Start: 12 @36335 has 135 MA's), (Start: 16 @36323 has 2 MA's), (18, 36314), (19, 36311), (30, 36233), (33, 36197), (41, 36161), (49, 36125), (63, 36023), (65, 36011), (104, 35717), (110, 35678), (126, 35609), (129, 35588), (130, 35582), (135, 35534), (140, 35456),

Gene: MaCh_54 Start: 36182, Stop: 35490, Start Num: 14

Candidate Starts for MaCh_54:

(Start: 14 @36182 has 104 MA's), (18, 36173), (29, 36104), (38, 36032), (77, 35771), (97, 35645),

Gene: Mabel_53 Start: 35784, Stop: 35092, Start Num: 14

Candidate Starts for Mabel_53:

(Start: 14 @35784 has 104 MA's), (18, 35775), (29, 35706), (38, 35634), (77, 35373), (97, 35247),

Gene: MajorMajor_53 Start: 35786, Stop: 35082, Start Num: 14

Candidate Starts for MajorMajor_53:

(3, 36119), (9, 35951), (Start: 14 @35786 has 104 MA's), (35, 35639), (65, 35462), (81, 35363), (89, 35303), (104, 35177), (120, 35114),

Gene: Malec_54 Start: 37489, Stop: 36785, Start Num: 14

Candidate Starts for Malec_54:

(Start: 14 @37489 has 104 MA's), (32, 37360), (64, 37174), (65, 37168), (83, 37054),

Gene: Maverick_51 Start: 36341, Stop: 35445, Start Num: 12

Candidate Starts for Maverick_51:

(Start: 12 @36341 has 135 MA's), (Start: 16 @36329 has 2 MA's), (18, 36320), (19, 36317), (30, 36239), (41, 36167), (49, 36131), (56, 36071), (63, 36029), (65, 36017), (104, 35723), (110, 35684), (126, 35615), (129, 35594), (130, 35588), (135, 35540), (140, 35462),

Gene: Maxo_52 Start: 36343, Stop: 35447, Start Num: 12

Candidate Starts for Maxo_52:

(Start: 12 @36343 has 135 MA's), (Start: 16 @36331 has 2 MA's), (18, 36322), (19, 36319), (30, 36241), (41, 36169), (49, 36133), (63, 36031), (65, 36019), (104, 35725), (110, 35686), (126, 35617), (129, 35596), (130, 35590), (135, 35542), (140, 35464),

Gene: Mazhar510_51 Start: 36342, Stop: 35446, Start Num: 12

Candidate Starts for Mazhar510_51:

(Start: 12 @36342 has 135 MA's), (Start: 16 @36330 has 2 MA's), (18, 36321), (19, 36318), (30, 36240), (41, 36168), (49, 36132), (56, 36072), (63, 36030), (65, 36018), (104, 35724), (110, 35685), (126, 35616), (129, 35595), (130, 35589), (135, 35541), (140, 35463),

Gene: Medusa_51 Start: 36340, Stop: 35444, Start Num: 12

Candidate Starts for Medusa_51:

(Start: 12 @36340 has 135 MA's), (Start: 16 @36328 has 2 MA's), (18, 36319), (19, 36316), (30, 36238), (33, 36202), (41, 36166), (49, 36130), (63, 36028), (65, 36016), (104, 35722), (110, 35683), (126, 35614), (129, 35593), (130, 35587), (135, 35539), (140, 35461),

Gene: MeeZee_51 Start: 36338, Stop: 35442, Start Num: 12

Candidate Starts for MeeZee_51:

(Start: 12 @36338 has 135 MA's), (Start: 16 @36326 has 2 MA's), (18, 36317), (19, 36314), (30, 36236), (41, 36164), (49, 36128), (56, 36068), (63, 36026), (65, 36014), (104, 35720), (110, 35681), (126, 35612), (129, 35591), (130, 35585), (135, 35537), (140, 35459),

Gene: Melvin_53 Start: 36336, Stop: 35440, Start Num: 12

Candidate Starts for Melvin_53:

(Start: 12 @36336 has 135 MA's), (Start: 16 @36324 has 2 MA's), (18, 36315), (19, 36312), (30, 36234), (33, 36198), (41, 36162), (49, 36126), (63, 36024), (65, 36012), (104, 35718), (110, 35679), (126, 35610), (129, 35589), (130, 35583), (135, 35535), (140, 35457),

Gene: MiculUcigas_54 Start: 36715, Stop: 36020, Start Num: 14

Candidate Starts for MiculUcigas_54:

(6, 36922), (Start: 14 @36715 has 104 MA's), (39, 36553), (52, 36493), (65, 36394), (73, 36325), (77, 36298), (83, 36280), (97, 36178),

Gene: Miko_51 Start: 36985, Stop: 36242, Start Num: 15

Candidate Starts for Miko_51:

(Start: 14 @36988 has 104 MA's), (Start: 15 @36985 has 34 MA's), (27, 36919), (49, 36784), (50, 36781), (55, 36733), (61, 36691), (71, 36613), (97, 36466), (102, 36409), (114, 36358), (122, 36328), (130, 36289), (134, 36250),

Gene: Millski_50 Start: 36342, Stop: 35446, Start Num: 12

Candidate Starts for Millski_50:

(Start: 12 @36342 has 135 MA's), (Start: 16 @36330 has 2 MA's), (18, 36321), (19, 36318), (30, 36240), (41, 36168), (49, 36132), (56, 36072), (63, 36030), (65, 36018), (104, 35724), (110, 35685), (126, 35616), (129, 35595), (130, 35589), (135, 35541), (140, 35463),

Gene: Miramae_49 Start: 35788, Stop: 34892, Start Num: 12

Candidate Starts for Miramae_49:

(Start: 12 @35788 has 135 MA's), (Start: 16 @35776 has 2 MA's), (18, 35767), (19, 35764), (30, 35686), (33, 35650), (41, 35614), (49, 35578), (56, 35518), (63, 35476), (65, 35464), (104, 35170), (110, 35131), (126, 35062), (129, 35041), (130, 35035), (135, 34987), (136, 34984), (138, 34951), (139, 34912), (140, 34909),

Gene: MissWhite_53 Start: 35277, Stop: 34594, Start Num: 15

Candidate Starts for MissWhite_53:

(Start: 15 @35277 has 34 MA's), (23, 35241), (33, 35148), (40, 35118), (65, 34962), (67, 34935), (73, 34893), (75, 34887), (97, 34752),

Gene: Morpher26_50 Start: 36311, Stop: 35427, Start Num: 12

Candidate Starts for Morpher26_50:

(Start: 12 @36311 has 135 MA's), (18, 36290), (41, 36137), (49, 36101), (63, 35999), (65, 35987), (90, 35837), (104, 35705), (110, 35666), (126, 35597), (130, 35570), (135, 35522), (138, 35486), (139, 35447), (140, 35444),

Gene: Morrow_52 Start: 36347, Stop: 35451, Start Num: 12

Candidate Starts for Morrow_52:

(Start: 12 @36347 has 135 MA's), (Start: 16 @36335 has 2 MA's), (18, 36326), (19, 36323), (30, 36245), (41, 36173), (49, 36137), (56, 36077), (63, 36035), (65, 36023), (104, 35729), (110, 35690), (126, 35621), (129, 35600), (130, 35594), (135, 35546), (140, 35468),

Gene: Mulciber_53 Start: 35740, Stop: 35048, Start Num: 14

Candidate Starts for Mulciber_53:

(Start: 14 @35740 has 104 MA's), (18, 35731), (29, 35662), (38, 35590), (77, 35329), (97, 35203),

Gene: Munch_54 Start: 36203, Stop: 35511, Start Num: 14

Candidate Starts for Munch_54:

(Start: 14 @36203 has 104 MA's), (18, 36194), (29, 36125), (38, 36053), (77, 35792), (97, 35666),

Gene: Mundrea_50 Start: 36337, Stop: 35441, Start Num: 12

Candidate Starts for Mundrea_50:

(Start: 12 @36337 has 135 MA's), (Start: 16 @36325 has 2 MA's), (18, 36316), (30, 36235), (33, 36199), (41, 36163), (49, 36127), (56, 36067), (63, 36025), (65, 36013), (104, 35719), (110, 35680), (126, 35611), (129, 35590), (130, 35584), (135, 35536), (136, 35533), (138, 35500), (140, 35458),

Gene: NaSiaTalie_54 Start: 36809, Stop: 36114, Start Num: 14

Candidate Starts for NaSiaTalie_54:

(5, 37040), (6, 37016), (7, 37001), (Start: 14 @36809 has 104 MA's), (39, 36647), (52, 36587), (65, 36488), (73, 36419), (77, 36392), (83, 36374), (97, 36272), (107, 36188),

Gene: Naji_56 Start: 36632, Stop: 35925, Start Num: 14

Candidate Starts for Naji_56:

(Start: 14 @36632 has 104 MA's), (20, 36605), (23, 36584), (39, 36467), (65, 36308), (79, 36209), (83, 36194), (100, 36065), (104, 36020),

Gene: Nebs_52 Start: 36341, Stop: 35445, Start Num: 12

Candidate Starts for Nebs_52:

(Start: 12 @36341 has 135 MA's), (Start: 16 @36329 has 2 MA's), (18, 36320), (19, 36317), (30, 36239), (33, 36203), (41, 36167), (49, 36131), (63, 36029), (65, 36017), (104, 35723), (110, 35684), (126, 35615), (129, 35594), (130, 35588), (135, 35540), (139, 35465), (140, 35462),

Gene: Nedarya_55 Start: 35344, Stop: 34664, Start Num: 14

Candidate Starts for Nedarya_55:

(Start: 14 @35344 has 104 MA's), (17, 35335), (30, 35242), (38, 35185), (46, 35149), (50, 35131), (64, 35026), (65, 35020), (102, 34756), (108, 34723), (125, 34675),

Gene: Nemo27_51 Start: 36340, Stop: 35444, Start Num: 12

Candidate Starts for Nemo27_51:

(Start: 12 @36340 has 135 MA's), (Start: 16 @36328 has 2 MA's), (18, 36319), (19, 36316), (30, 36238), (41, 36166), (49, 36130), (56, 36070), (63, 36028), (65, 36016), (104, 35722), (110, 35683), (126, 35614), (129, 35593), (130, 35587), (135, 35539), (140, 35461),

Gene: NicoleTera_53 Start: 37099, Stop: 36425, Start Num: 14

Candidate Starts for NicoleTera_53:

(Start: 14 @37099 has 104 MA's), (33, 36967), (41, 36931), (45, 36916), (46, 36910), (59, 36823), (79, 36682), (97, 36571), (107, 36487),

Gene: Noelle_51 Start: 36615, Stop: 35719, Start Num: 12

Candidate Starts for Noelle_51:

(Start: 12 @36615 has 135 MA's), (Start: 16 @36603 has 2 MA's), (18, 36594), (19, 36591), (30, 36513), (33, 36477), (41, 36441), (50, 36402), (63, 36303), (65, 36291), (104, 35997), (110, 35958), (126, 35889), (129, 35868), (130, 35862), (135, 35814), (136, 35811), (138, 35778), (139, 35739), (140, 35736),

Gene: NorthStar_50 Start: 36341, Stop: 35445, Start Num: 12

Candidate Starts for NorthStar_50:

(Start: 12 @36341 has 135 MA's), (Start: 16 @36329 has 2 MA's), (18, 36320), (19, 36317), (30, 36239), (41, 36167), (49, 36131), (56, 36071), (63, 36029), (65, 36017), (104, 35723), (110, 35684), (126, 35615), (129, 35594), (130, 35588), (135, 35540), (140, 35462),

Gene: NotAPhaseMom_51 Start: 36345, Stop: 35449, Start Num: 12

Candidate Starts for NotAPhaseMom_51:

(Start: 12 @36345 has 135 MA's), (Start: 16 @36333 has 2 MA's), (18, 36324), (19, 36321), (30, 36243), (41, 36171), (49, 36135), (56, 36075), (63, 36033), (65, 36021), (104, 35727), (110, 35688), (126, 35619), (129, 35598), (130, 35592), (135, 35544), (140, 35466),

Gene: NothingSpecial_52 Start: 37316, Stop: 36636, Start Num: 15

Candidate Starts for NothingSpecial_52:

(Start: 15 @37316 has 34 MA's), (39, 37160), (46, 37130), (65, 37001), (72, 36935), (82, 36899), (95, 36824), (97, 36794), (104, 36731), (120, 36668),

Gene: Nyxis_51 Start: 36231, Stop: 35335, Start Num: 12

Candidate Starts for Nyxis_51:

(Start: 12 @36231 has 135 MA's), (Start: 16 @36219 has 2 MA's), (18, 36210), (19, 36207), (30, 36129), (33, 36093), (41, 36057), (49, 36021), (63, 35919), (65, 35907), (104, 35613), (110, 35574), (126, 35505), (129, 35484), (130, 35478), (135, 35430), (140, 35352),

Gene: OKaNui_51 Start: 36391, Stop: 35495, Start Num: 12

Candidate Starts for OKaNui_51:

(Start: 12 @36391 has 135 MA's), (Start: 16 @36379 has 2 MA's), (18, 36370), (19, 36367), (30, 36289), (33, 36253), (41, 36217), (49, 36181), (63, 36079), (65, 36067), (104, 35773), (110, 35734), (126, 35665), (129, 35644), (130, 35638), (135, 35590), (140, 35512),

Gene: Obama12_52 Start: 36761, Stop: 35865, Start Num: 12

Candidate Starts for Obama12_52:

(Start: 12 @36761 has 135 MA's), (Start: 16 @36749 has 2 MA's), (18, 36740), (19, 36737), (30, 36659), (33, 36623), (41, 36587), (49, 36551), (63, 36449), (65, 36437), (104, 36143), (110, 36104), (126, 36035), (129, 36014), (130, 36008), (135, 35960), (140, 35882),

Gene: Odin_52 Start: 35654, Stop: 34950, Start Num: 14

Candidate Starts for Odin_52:

(Start: 14 @35654 has 104 MA's), (18, 35636), (23, 35609), (25, 35588), (39, 35492), (58, 35381), (65, 35333), (103, 35048),

Gene: Ohfah_52 Start: 36341, Stop: 35445, Start Num: 12

Candidate Starts for Ohfah_52:

(Start: 12 @36341 has 135 MA's), (Start: 16 @36329 has 2 MA's), (18, 36320), (19, 36317), (30, 36239), (33, 36203), (41, 36167), (49, 36131), (63, 36029), (65, 36017), (104, 35723), (110, 35684), (126, 35615), (129, 35594), (130, 35588), (135, 35540), (140, 35462),

Gene: Orange_53 Start: 35752, Stop: 35060, Start Num: 14

Candidate Starts for Orange_53:

(Start: 14 @35752 has 104 MA's), (18, 35743), (29, 35674), (38, 35602), (77, 35341), (97, 35215),

Gene: PP_53 Start: 39933, Stop: 39049, Start Num: 13

Candidate Starts for PP_53:

(Start: 13 @39933 has 5 MA's), (18, 39918), (30, 39837), (45, 39750), (53, 39702), (55, 39678), (63, 39627), (65, 39615), (67, 39588), (78, 39531), (91, 39450), (93, 39438), (104, 39333), (110, 39294), (115, 39279), (118, 39255), (123, 39228), (124, 39225), (130, 39192), (132, 39177), (133, 39165), (135, 39144), (137, 39123), (138, 39108), (139, 39069), (140, 39066),

Gene: PainterBoy_55 Start: 36600, Stop: 35875, Start Num: 15

Candidate Starts for PainterBoy_55:

(3, 36975), (Start: 15 @36600 has 34 MA's), (23, 36564), (28, 36525), (34, 36465), (39, 36444), (43, 36429), (46, 36414), (49, 36399), (50, 36396), (57, 36336), (64, 36291), (65, 36285), (66, 36276), (82,

36183), (102, 36021), (106, 36006),

Gene: Palestino_50 Start: 36341, Stop: 35445, Start Num: 12

Candidate Starts for Palestino_50:

(Start: 12 @36341 has 135 MA's), (Start: 16 @36329 has 2 MA's), (18, 36320), (19, 36317), (30, 36239), (41, 36167), (49, 36131), (56, 36071), (63, 36029), (65, 36017), (104, 35723), (110, 35684), (126, 35615), (129, 35594), (130, 35588), (135, 35540), (140, 35462),

Gene: Peaches_51 Start: 36340, Stop: 35444, Start Num: 12

Candidate Starts for Peaches_51:

(Start: 12 @36340 has 135 MA's), (Start: 16 @36328 has 2 MA's), (18, 36319), (19, 36316), (30, 36238), (33, 36202), (41, 36166), (49, 36130), (63, 36028), (65, 36016), (104, 35722), (110, 35683), (126, 35614), (129, 35593), (130, 35587), (135, 35539), (140, 35461),

Gene: Perplexer_50 Start: 36287, Stop: 35403, Start Num: 12

Candidate Starts for Perplexer_50:

(Start: 12 @36287 has 135 MA's), (18, 36266), (41, 36113), (49, 36077), (63, 35975), (65, 35963), (90, 35813), (104, 35681), (110, 35642), (126, 35573), (130, 35546), (135, 35498), (138, 35462), (139, 35423), (140, 35420),

Gene: PeterPeter_51 Start: 36338, Stop: 35442, Start Num: 12

Candidate Starts for PeterPeter_51:

(Start: 12 @36338 has 135 MA's), (Start: 16 @36326 has 2 MA's), (18, 36317), (19, 36314), (30, 36236), (41, 36164), (49, 36128), (56, 36068), (63, 36026), (65, 36014), (104, 35720), (110, 35681), (126, 35612), (129, 35591), (130, 35585), (135, 35537), (140, 35459),

Gene: Petersenfast_52 Start: 35751, Stop: 35059, Start Num: 14

Candidate Starts for Petersenfast_52:

(Start: 14 @35751 has 104 MA's), (18, 35742), (29, 35673), (38, 35601), (77, 35340), (97, 35214),

Gene: PetiteSangsue_50 Start: 36290, Stop: 35406, Start Num: 12

Candidate Starts for PetiteSangsue_50:

(Start: 12 @36290 has 135 MA's), (18, 36269), (41, 36116), (49, 36080), (63, 35978), (65, 35966), (90, 35816), (104, 35684), (110, 35645), (126, 35576), (130, 35549), (135, 35501), (138, 35465), (139, 35426), (140, 35423),

Gene: Ph8s_55 Start: 36008, Stop: 35307, Start Num: 14

Candidate Starts for Ph8s_55:

(3, 36341), (Start: 14 @36008 has 104 MA's), (39, 35846), (41, 35837), (63, 35699), (65, 35687), (73, 35618), (83, 35576), (84, 35567), (100, 35447), (103, 35405),

Gene: Phacado_51 Start: 36340, Stop: 35444, Start Num: 12

Candidate Starts for Phacado_51:

(Start: 12 @36340 has 135 MA's), (Start: 16 @36328 has 2 MA's), (18, 36319), (19, 36316), (30, 36238), (41, 36166), (49, 36130), (56, 36070), (63, 36028), (65, 36016), (104, 35722), (110, 35683), (126, 35614), (129, 35593), (130, 35587), (135, 35539), (140, 35461),

Gene: Phaded_55 Start: 38002, Stop: 37277, Start Num: 15

Candidate Starts for Phaded_55:

(5, 38236), (Start: 15 @38002 has 34 MA's), (29, 37924), (33, 37873), (40, 37843), (43, 37831), (47, 37813), (64, 37693), (65, 37687), (73, 37618), (79, 37588), (86, 37543), (92, 37507), (97, 37477), (102, 37420), (114, 37369),

Gene: Pharaoh_49 Start: 36570, Stop: 35899, Start Num: 15

Candidate Starts for Pharaoh_49:

(Start: 15 @36570 has 34 MA's), (29, 36492), (41, 36405), (46, 36384), (65, 36255), (77, 36159), (97, 36045), (107, 35961),

Gene: Phelipe_52 Start: 36341, Stop: 35445, Start Num: 12

Candidate Starts for Phelipe_52:

(Start: 12 @36341 has 135 MA's), (Start: 16 @36329 has 2 MA's), (18, 36320), (19, 36317), (30, 36239), (33, 36203), (41, 36167), (49, 36131), (63, 36029), (65, 36017), (104, 35723), (110, 35684), (126, 35615), (129, 35594), (130, 35588), (135, 35540), (140, 35462),

Gene: Phighter1804_51 Start: 36402, Stop: 35506, Start Num: 12

Candidate Starts for Phighter1804_51:

(Start: 12 @36402 has 135 MA's), (Start: 16 @36390 has 2 MA's), (18, 36381), (19, 36378), (30, 36300), (33, 36264), (41, 36228), (49, 36192), (56, 36132), (63, 36090), (65, 36078), (104, 35784), (110, 35745), (126, 35676), (129, 35655), (130, 35649), (135, 35601), (136, 35598), (138, 35565), (139, 35526), (140, 35523),

Gene: Phontbonne_51 Start: 36232, Stop: 35336, Start Num: 12

Candidate Starts for Phontbonne_51:

(Start: 12 @36232 has 135 MA's), (Start: 16 @36220 has 2 MA's), (18, 36211), (19, 36208), (30, 36130), (33, 36094), (41, 36058), (49, 36022), (63, 35920), (65, 35908), (104, 35614), (110, 35575), (126, 35506), (129, 35485), (130, 35479), (135, 35431), (140, 35353),

Gene: Pipcraft_49 Start: 36341, Stop: 35445, Start Num: 12

Candidate Starts for Pipcraft_49:

(Start: 12 @36341 has 135 MA's), (Start: 16 @36329 has 2 MA's), (18, 36320), (19, 36317), (30, 36239), (33, 36203), (41, 36167), (49, 36131), (63, 36029), (65, 36017), (104, 35723), (110, 35684), (126, 35615), (129, 35594), (130, 35588), (135, 35540), (140, 35462),

Gene: Piro94_54 Start: 37156, Stop: 36461, Start Num: 14

Candidate Starts for Piro94_54:

(5, 37387), (6, 37363), (Start: 14 @37156 has 104 MA's), (39, 36994), (52, 36934), (65, 36835), (73, 36766), (77, 36739), (83, 36721), (97, 36619),

Gene: Polymorphads_52 Start: 36334, Stop: 35438, Start Num: 12

Candidate Starts for Polymorphads_52:

(Start: 12 @36334 has 135 MA's), (Start: 16 @36322 has 2 MA's), (18, 36313), (19, 36310), (30, 36232), (33, 36196), (41, 36160), (49, 36124), (63, 36022), (65, 36010), (104, 35716), (110, 35677), (126, 35608), (129, 35587), (130, 35581), (135, 35533), (140, 35455),

Gene: Pomar16_56 Start: 36672, Stop: 35965, Start Num: 14

Candidate Starts for Pomar16_56:

(Start: 14 @36672 has 104 MA's), (20, 36645), (23, 36624), (39, 36507), (65, 36348), (79, 36249), (83, 36234), (100, 36105), (104, 36060),

Gene: Power_53 Start: 36797, Stop: 36105, Start Num: 14

Candidate Starts for Power_53:

(1, 37298), (Start: 14 @36797 has 104 MA's), (23, 36749), (39, 36632), (73, 36404), (79, 36374), (84, 36350), (100, 36230),

Gene: Pukovnik_53 Start: 37659, Stop: 36934, Start Num: 15

Candidate Starts for Pukovnik_53:

(Start: 15 @37659 has 34 MA's), (29, 37581), (33, 37530), (46, 37473), (59, 37386), (61, 37365), (63, 37356), (65, 37344), (73, 37275), (77, 37248), (92, 37164), (97, 37134), (102, 37077), (114, 37026),

Gene: Pumbaa_51 Start: 36286, Stop: 35390, Start Num: 12

Candidate Starts for Pumbaa_51:

(Start: 12 @36286 has 135 MA's), (Start: 16 @36274 has 2 MA's), (18, 36265), (19, 36262), (30, 36184), (41, 36112), (49, 36076), (56, 36016), (63, 35974), (65, 35962), (104, 35668), (110, 35629), (126, 35560), (129, 35539), (130, 35533), (135, 35485), (140, 35407),

Gene: QueenB2_53 Start: 36775, Stop: 36089, Start Num: 14

Candidate Starts for QueenB2_53:

(9, 36937), (Start: 14 @36775 has 104 MA's), (21, 36736), (40, 36604), (43, 36592), (44, 36586), (64, 36454), (73, 36385), (100, 36214), (103, 36172), (104, 36169),

Gene: QueenBeesly_54 Start: 36744, Stop: 36052, Start Num: 14

Candidate Starts for QueenBeesly_54:

(Start: 14 @36744 has 104 MA's), (23, 36696), (39, 36579), (73, 36351), (79, 36321), (83, 36306), (84, 36297), (100, 36177),

Gene: Quokka_52 Start: 35786, Stop: 35082, Start Num: 14

Candidate Starts for Quokka_52:

(3, 36119), (9, 35951), (Start: 14 @35786 has 104 MA's), (35, 35639), (65, 35462), (81, 35363), (89, 35303), (104, 35177), (120, 35114),

Gene: Rachaly_53 Start: 37130, Stop: 36387, Start Num: 15

Candidate Starts for Rachaly_53:

(Start: 14 @37133 has 104 MA's), (Start: 15 @37130 has 34 MA's), (27, 37064), (49, 36929), (55, 36878), (61, 36836), (71, 36758), (97, 36611), (102, 36554), (114, 36503), (122, 36473), (130, 36434), (134, 36395),

Gene: RedRock_56 Start: 37992, Stop: 37312, Start Num: 14

Candidate Starts for RedRock_56:

(Start: 14 @37992 has 104 MA's), (18, 37974), (41, 37818), (55, 37731), (59, 37710), (65, 37668), (70, 37620), (79, 37569), (97, 37458),

Gene: Refuge_52 Start: 37802, Stop: 37131, Start Num: 15

Candidate Starts for Refuge_52:

(3, 38144), (10, 37967), (Start: 15 @37802 has 34 MA's), (33, 37673), (45, 37622), (46, 37616), (65, 37487), (74, 37412), (97, 37277),

Gene: Relief_50 Start: 36338, Stop: 35442, Start Num: 12

Candidate Starts for Relief_50:

(Start: 12 @36338 has 135 MA's), (Start: 16 @36326 has 2 MA's), (18, 36317), (19, 36314), (30, 36236), (33, 36200), (41, 36164), (49, 36128), (63, 36026), (65, 36014), (104, 35720), (110, 35681), (126, 35612), (129, 35591), (130, 35585), (135, 35537), (140, 35459),

Gene: Retro23_55 Start: 37160, Stop: 36489, Start Num: 14

Candidate Starts for Retro23_55:

(9, 37322), (Start: 14 @37160 has 104 MA's), (33, 37028), (46, 36971), (51, 36950), (65, 36842), (79, 36743), (89, 36680), (97, 36632),

Gene: Romney_51 Start: 36338, Stop: 35442, Start Num: 12

Candidate Starts for Romney_51:

(Start: 12 @36338 has 135 MA's), (Start: 16 @36326 has 2 MA's), (18, 36317), (19, 36314), (30, 36236), (33, 36200), (41, 36164), (49, 36128), (63, 36026), (65, 36014), (104, 35720), (110, 35681), (126, 35612), (129, 35591), (130, 35585), (135, 35537), (140, 35459),

Gene: Roosevelt_50 Start: 36343, Stop: 35447, Start Num: 12

Candidate Starts for Roosevelt_50:

(Start: 12 @36343 has 135 MA's), (Start: 16 @36331 has 2 MA's), (18, 36322), (19, 36319), (30, 36241), (41, 36169), (49, 36133), (56, 36073), (63, 36031), (65, 36019), (104, 35725), (110, 35686), (126, 35617), (129, 35596), (130, 35590), (135, 35542), (140, 35464),

Gene: Rosa24_50 Start: 36369, Stop: 35473, Start Num: 12

Candidate Starts for Rosa24_50:

(Start: 12 @36369 has 135 MA's), (Start: 16 @36357 has 2 MA's), (18, 36348), (19, 36345), (30, 36267), (33, 36231), (41, 36195), (49, 36159), (63, 36057), (65, 36045), (104, 35751), (110, 35712), (126, 35643), (129, 35622), (130, 35616), (135, 35568), (140, 35490),

Gene: Ruin_51 Start: 36334, Stop: 35438, Start Num: 12

Candidate Starts for Ruin_51:

(Start: 12 @36334 has 135 MA's), (Start: 16 @36322 has 2 MA's), (18, 36313), (19, 36310), (30, 36232), (41, 36160), (49, 36124), (56, 36064), (63, 36022), (65, 36010), (104, 35716), (110, 35677), (126, 35608), (129, 35587), (130, 35581), (135, 35533), (140, 35455),

Gene: Sabertooth_51 Start: 36343, Stop: 35447, Start Num: 12

Candidate Starts for Sabertooth_51:

(Start: 12 @36343 has 135 MA's), (Start: 16 @36331 has 2 MA's), (18, 36322), (19, 36319), (30, 36241), (33, 36205), (41, 36169), (49, 36133), (63, 36031), (65, 36019), (104, 35725), (110, 35686), (126, 35617), (129, 35596), (130, 35590), (135, 35542), (140, 35464),

Gene: Salz_52 Start: 35722, Stop: 35030, Start Num: 14

Candidate Starts for Salz_52:

(Start: 14 @35722 has 104 MA's), (18, 35713), (29, 35644), (38, 35572), (77, 35311), (97, 35185),

Gene: Scamp_51 Start: 36343, Stop: 35447, Start Num: 12

Candidate Starts for Scamp_51:

(Start: 12 @36343 has 135 MA's), (Start: 16 @36331 has 2 MA's), (18, 36322), (19, 36319), (30, 36241), (33, 36205), (41, 36169), (49, 36133), (63, 36031), (65, 36019), (104, 35725), (110, 35686), (126, 35617), (129, 35596), (130, 35590), (135, 35542), (140, 35464),

Gene: SemperFi_55 Start: 37012, Stop: 36320, Start Num: 14

Candidate Starts for SemperFi_55:

(1, 37513), (Start: 14 @37012 has 104 MA's), (23, 36964), (39, 36847), (73, 36619), (79, 36589), (83, 36574), (84, 36565), (100, 36445),

Gene: SenorClean_49 Start: 36341, Stop: 35445, Start Num: 12

Candidate Starts for SenorClean_49:

(Start: 12 @36341 has 135 MA's), (Start: 16 @36329 has 2 MA's), (18, 36320), (19, 36317), (30, 36239), (33, 36203), (41, 36167), (49, 36131), (63, 36029), (65, 36017), (104, 35723), (110, 35684), (126, 35615), (129, 35594), (130, 35588), (135, 35540), (140, 35462),

Gene: Serenity_54 Start: 35976, Stop: 35272, Start Num: 14

Candidate Starts for Serenity_54:

(8, 36150), (Start: 14 @35976 has 104 MA's), (81, 35553), (89, 35493), (104, 35367), (120, 35304),

Gene: Shaka_51 Start: 36338, Stop: 35442, Start Num: 12

Candidate Starts for Shaka_51:

(Start: 12 @36338 has 135 MA's), (Start: 16 @36326 has 2 MA's), (18, 36317), (19, 36314), (30, 36236), (33, 36200), (41, 36164), (49, 36128), (56, 36068), (63, 36026), (65, 36014), (104, 35720), (110, 35681), (126, 35612), (129, 35591), (130, 35585), (135, 35537), (140, 35459),

Gene: Sham4_53 Start: 35750, Stop: 35058, Start Num: 14

Candidate Starts for Sham4_53:

(Start: 14 @35750 has 104 MA's), (18, 35741), (29, 35672), (38, 35600), (77, 35339), (97, 35213),

Gene: Sheen_53 Start: 38761, Stop: 37871, Start Num: 13

Candidate Starts for Sheen_53:

(Start: 13 @38761 has 5 MA's), (29, 38677), (37, 38605), (48, 38563), (54, 38521), (62, 38455), (63, 38452), (73, 38371), (80, 38341), (84, 38320), (85, 38308), (87, 38296), (91, 38263), (98, 38209), (99, 38197), (101, 38167), (104, 38146), (110, 38107), (115, 38092), (116, 38089), (130, 38014), (135, 37966), (138, 37930), (140, 37888),

Gene: SheldonCooper_53 Start: 36778, Stop: 35882, Start Num: 12

Candidate Starts for SheldonCooper_53:

(Start: 12 @36778 has 135 MA's), (Start: 16 @36766 has 2 MA's), (18, 36757), (19, 36754), (30, 36676), (41, 36604), (49, 36568), (63, 36466), (65, 36454), (104, 36160), (110, 36121), (126, 36052), (129, 36031), (130, 36025), (135, 35977), (140, 35899),

Gene: Shygu2_50 Start: 36314, Stop: 35418, Start Num: 12

Candidate Starts for Shygu2_50:

(Start: 12 @36314 has 135 MA's), (18, 36293), (19, 36290), (41, 36140), (49, 36104), (63, 36002), (65, 35990), (72, 35924), (76, 35915), (79, 35894), (90, 35828), (104, 35696), (110, 35657), (126, 35588), (129, 35567), (130, 35561), (135, 35513), (138, 35477), (140, 35435),

Gene: Skipitt_50 Start: 36335, Stop: 35439, Start Num: 12

Candidate Starts for Skipitt_50:

(Start: 12 @36335 has 135 MA's), (Start: 16 @36323 has 2 MA's), (18, 36314), (19, 36311), (30, 36233), (33, 36197), (41, 36161), (49, 36125), (56, 36065), (63, 36023), (65, 36011), (104, 35717), (110, 35678), (126, 35609), (129, 35588), (130, 35582), (135, 35534), (140, 35456),

Gene: Sknot_56 Start: 36812, Stop: 36117, Start Num: 14

Candidate Starts for Sknot_56:

(6, 37019), (Start: 14 @36812 has 104 MA's), (39, 36650), (52, 36590), (65, 36491), (73, 36422), (77, 36395), (83, 36377), (97, 36275),

Gene: Smeagan_57 Start: 37473, Stop: 36787, Start Num: 14

Candidate Starts for Smeagan_57:

(1, 37974), (9, 37635), (Start: 14 @37473 has 104 MA's), (40, 37302), (43, 37290), (44, 37284), (64, 37152), (73, 37083),

Gene: SnapTap_54 Start: 36823, Stop: 36131, Start Num: 14

Candidate Starts for SnapTap_54:

(1, 37324), (Start: 14 @36823 has 104 MA's), (23, 36775), (39, 36658), (73, 36430), (79, 36400), (83, 36385), (84, 36376), (100, 36256),

Gene: Snape_53 Start: 35742, Stop: 35050, Start Num: 14

Candidate Starts for Snape_53:

(Start: 14 @35742 has 104 MA's), (18, 35733), (29, 35664), (38, 35592), (77, 35331), (97, 35205),

Gene: SororFago_56 Start: 37846, Stop: 37094, Start Num: 15

Candidate Starts for SororFago_56:

(Start: 15 @37846 has 34 MA's), (29, 37768), (41, 37681), (46, 37660), (49, 37645), (64, 37537), (65, 37531), (79, 37432), (86, 37387), (97, 37321),

Gene: Sparxx_52 Start: 36336, Stop: 35440, Start Num: 12

Candidate Starts for Sparxx_52:

(Start: 12 @36336 has 135 MA's), (Start: 16 @36324 has 2 MA's), (18, 36315), (19, 36312), (30, 36234), (33, 36198), (41, 36162), (49, 36126), (63, 36024), (65, 36012), (104, 35718), (110, 35679), (126, 35610), (129, 35589), (130, 35583), (135, 35535), (140, 35457),

Gene: Spino_50 Start: 36341, Stop: 35445, Start Num: 12

Candidate Starts for Spino_50:

(Start: 12 @36341 has 135 MA's), (Start: 16 @36329 has 2 MA's), (18, 36320), (19, 36317), (30, 36239), (33, 36203), (41, 36167), (49, 36131), (63, 36029), (65, 36017), (104, 35723), (110, 35684), (126, 35615), (129, 35594), (130, 35588), (135, 35540), (140, 35462),

Gene: StarStuff_56 Start: 36634, Stop: 35927, Start Num: 14

Candidate Starts for StarStuff_56:

(Start: 14 @36634 has 104 MA's), (20, 36607), (23, 36586), (39, 36469), (65, 36310), (79, 36211), (83, 36196), (100, 36067), (104, 36022),

Gene: Stasia_50 Start: 36217, Stop: 35321, Start Num: 12

Candidate Starts for Stasia_50:

(Start: 12 @36217 has 135 MA's), (Start: 16 @36205 has 2 MA's), (18, 36196), (30, 36115), (33, 36079), (41, 36043), (63, 35905), (104, 35599), (110, 35560), (126, 35491), (130, 35464), (135, 35416), (136, 35413), (140, 35338),

Gene: Steamy_50 Start: 36314, Stop: 35643, Start Num: 15

Candidate Starts for Steamy_50:

(3, 36650), (Start: 15 @36314 has 34 MA's), (29, 36236), (33, 36185), (41, 36149), (60, 36023), (65, 35999), (77, 35903), (97, 35789), (107, 35705),

Gene: Stink_50 Start: 36068, Stop: 35172, Start Num: 12

Candidate Starts for Stink_50:

(Start: 12 @36068 has 135 MA's), (Start: 16 @36056 has 2 MA's), (18, 36047), (19, 36044), (30, 35966), (33, 35930), (41, 35894), (56, 35798), (63, 35756), (65, 35744), (104, 35450), (110, 35411), (126, 35342), (129, 35321), (130, 35315), (135, 35267), (136, 35264), (138, 35231), (139, 35192), (140, 35189),

Gene: Sunhee_57 Start: 36270, Stop: 35515, Start Num: 15

Candidate Starts for Sunhee_57:

(Start: 15 @36270 has 34 MA's), (29, 36192), (46, 36084), (49, 36069), (50, 36066), (61, 35976), (64, 35961), (65, 35955), (71, 35895), (81, 35853), (85, 35820), (97, 35745), (102, 35688), (106, 35670), (118, 35619), (134, 35523),

Gene: Superchunk_52 Start: 35279, Stop: 34578, Start Num: 14

Candidate Starts for Superchunk_52:

(3, 35612), (Start: 14 @35279 has 104 MA's), (18, 35261), (23, 35234), (25, 35213), (39, 35117), (41, 35108), (58, 35006), (65, 34958), (81, 34859), (103, 34676),

Gene: SweetiePie_54 Start: 36955, Stop: 36263, Start Num: 14

Candidate Starts for SweetiePie_54:

(1, 37456), (Start: 14 @36955 has 104 MA's), (23, 36907), (39, 36790), (73, 36562), (79, 36532), (83, 36517), (84, 36508), (100, 36388),

Gene: SwirlSquare_59 Start: 36144, Stop: 35443, Start Num: 14

Candidate Starts for SwirlSquare_59:

(Start: 14 @36144 has 104 MA's), (18, 36126), (23, 36099), (39, 35982), (57, 35874), (72, 35757), (81, 35724), (103, 35541), (120, 35475),

Gene: Taquarus_51 Start: 36344, Stop: 35448, Start Num: 12

Candidate Starts for Taquarus_51:

(Start: 12 @36344 has 135 MA's), (Start: 16 @36332 has 2 MA's), (18, 36323), (19, 36320), (30, 36242), (33, 36206), (41, 36170), (49, 36134), (56, 36074), (63, 36032), (65, 36020), (104, 35726), (110, 35687), (126, 35618), (129, 35597), (130, 35591), (135, 35543), (140, 35465),

Gene: TarsusIV_53 Start: 36780, Stop: 36112, Start Num: 15

Candidate Starts for TarsusIV_53:

(Start: 15 @36780 has 34 MA's), (23, 36744), (52, 36564), (65, 36465), (75, 36390), (89, 36303), (97, 36255),

Gene: Thanksgivukkah_50 Start: 36339, Stop: 35443, Start Num: 12

Candidate Starts for Thanksgivukkah_50:

(Start: 12 @36339 has 135 MA's), (Start: 16 @36327 has 2 MA's), (18, 36318), (19, 36315), (30, 36237), (33, 36201), (41, 36165), (49, 36129), (63, 36027), (65, 36015), (104, 35721), (110, 35682), (126, 35613), (129, 35592), (130, 35586), (135, 35538), (140, 35460),

Gene: Timothy_53 Start: 35719, Stop: 35027, Start Num: 14

Candidate Starts for Timothy_53:

(Start: 14 @35719 has 104 MA's), (18, 35710), (29, 35641), (38, 35569), (77, 35308), (97, 35182),

Gene: Timshel_49 Start: 37554, Stop: 36655, Start Num: 13

Candidate Starts for Timshel_49:

(Start: 13 @37554 has 5 MA's), (23, 37512), (29, 37470), (45, 37368), (59, 37275), (63, 37245), (69, 37191), (72, 37167), (84, 37113), (86, 37092), (91, 37056), (103, 36942), (104, 36939), (110, 36900), (115, 36885), (117, 36870), (124, 36831), (127, 36819), (135, 36750), (138, 36714), (139, 36675), (140, 36672), (141, 36660),

Gene: TinaFeyge_51 Start: 36336, Stop: 35440, Start Num: 12

Candidate Starts for TinaFeyge_51:

(Start: 12 @36336 has 135 MA's), (Start: 16 @36324 has 2 MA's), (18, 36315), (19, 36312), (30, 36234), (33, 36198), (41, 36162), (49, 36126), (63, 36024), (65, 36012), (104, 35718), (110, 35679), (126, 35610), (129, 35589), (130, 35583), (135, 35535), (140, 35457),

Gene: TinyTimmy_53 Start: 35768, Stop: 35076, Start Num: 14

Candidate Starts for TinyTimmy_53:

(Start: 14 @35768 has 104 MA's), (18, 35759), (29, 35690), (38, 35618), (77, 35357), (97, 35231),

Gene: Tinybot_50 Start: 36368, Stop: 35472, Start Num: 12

Candidate Starts for Tinybot_50:

(Start: 12 @36368 has 135 MA's), (Start: 16 @36356 has 2 MA's), (18, 36347), (19, 36344), (30, 36266), (33, 36230), (41, 36194), (49, 36158), (63, 36056), (65, 36044), (104, 35750), (110, 35711), (126, 35642), (129, 35621), (130, 35615), (135, 35567), (140, 35489),

Gene: TopsytheTRex_50 Start: 36046, Stop: 35342, Start Num: 14

Candidate Starts for TopsytheTRex_50:

(8, 36220), (Start: 14 @36046 has 104 MA's), (81, 35623), (89, 35563), (104, 35437), (120, 35374),

Gene: TiroTheta9_51 Start: 36323, Stop: 35439, Start Num: 16

Candidate Starts for TiroTheta9_51:

(Start: 12 @36335 has 135 MA's), (Start: 16 @36323 has 2 MA's), (18, 36314), (19, 36311), (30, 36233), (33, 36197), (41, 36161), (49, 36125), (63, 36023), (65, 36011), (104, 35717), (110, 35678), (126, 35609), (129, 35588), (130, 35582), (135, 35534), (140, 35456),

Gene: Tomathan_56 Start: 36631, Stop: 35924, Start Num: 14

Candidate Starts for Tomathan_56:

(4, 36916), (Start: 14 @36631 has 104 MA's), (20, 36604), (23, 36583), (39, 36466), (65, 36307), (79, 36208), (83, 36193), (100, 36064), (104, 36019),

Gene: Toro_55 Start: 38873, Stop: 37983, Start Num: 13

Candidate Starts for Toro_55:

(Start: 13 @38873 has 5 MA's), (29, 38789), (37, 38717), (48, 38675), (54, 38633), (62, 38567), (63, 38564), (73, 38483), (80, 38453), (84, 38432), (85, 38420), (87, 38408), (91, 38375), (98, 38321), (99, 38309), (101, 38279), (104, 38258), (110, 38219), (115, 38204), (116, 38201), (130, 38126), (135, 38078), (138, 38042), (140, 38000),

Gene: Travvers_56 Start: 36631, Stop: 35924, Start Num: 14

Candidate Starts for Travvers_56:

(Start: 14 @36631 has 104 MA's), (20, 36604), (23, 36583), (39, 36466), (65, 36307), (79, 36208), (83, 36193), (100, 36064), (104, 36019),

Gene: Trixie_52 Start: 36877, Stop: 36206, Start Num: 15

Candidate Starts for Trixie_52:

(Start: 15 @36877 has 34 MA's), (52, 36661), (79, 36463), (97, 36352),

Gene: Trooper_55 Start: 37171, Stop: 36485, Start Num: 14

Candidate Starts for Trooper_55:

(Start: 14 @37171 has 104 MA's), (18, 37153), (23, 37126), (24, 37123), (52, 36949), (65, 36850), (72, 36784), (73, 36781), (77, 36754), (97, 36634), (119, 36520),

Gene: TroyPia_52 Start: 36339, Stop: 35443, Start Num: 12

Candidate Starts for TroyPia_52:

(Start: 12 @36339 has 135 MA's), (Start: 16 @36327 has 2 MA's), (18, 36318), (19, 36315), (30, 36237), (41, 36165), (49, 36129), (56, 36069), (63, 36027), (65, 36015), (104, 35721), (110, 35682), (126, 35613), (129, 35592), (130, 35586), (135, 35538), (140, 35460),

Gene: Turbido_55 Start: 37207, Stop: 36521, Start Num: 14

Candidate Starts for Turbido_55:

(Start: 14 @37207 has 104 MA's), (40, 37036), (43, 37024), (44, 37018), (64, 36886), (73, 36817), (104, 36601),

Gene: TygerBlood_51 Start: 36341, Stop: 35445, Start Num: 12

Candidate Starts for TygerBlood_51:

(Start: 12 @36341 has 135 MA's), (Start: 16 @36329 has 2 MA's), (18, 36320), (19, 36317), (30, 36239), (41, 36167), (49, 36131), (63, 36029), (65, 36017), (104, 35723), (110, 35684), (126, 35615), (129, 35594), (130, 35588), (135, 35540), (140, 35462),

Gene: Ulysses_50 Start: 36018, Stop: 35122, Start Num: 12

Candidate Starts for Ulysses_50:

(Start: 12 @36018 has 135 MA's), (Start: 16 @36006 has 2 MA's), (18, 35997), (19, 35994), (30, 35916), (33, 35880), (41, 35844), (49, 35808), (63, 35706), (65, 35694), (104, 35400), (110, 35361), (126, 35292), (129, 35271), (130, 35265), (135, 35217), (140, 35139),

Gene: Updawg_55 Start: 37053, Stop: 36358, Start Num: 14

Candidate Starts for Updawg_55:

(6, 37260), (Start: 14 @37053 has 104 MA's), (39, 36891), (52, 36831), (65, 36732), (73, 36663), (77, 36636), (83, 36618), (97, 36516),

Gene: VA6_55 Start: 37267, Stop: 36506, Start Num: 14

Candidate Starts for VA6_55:

(9, 37432), (Start: 14 @37267 has 104 MA's), (24, 37213), (32, 37132), (64, 36946), (65, 36940), (81, 36850), (110, 36634), (130, 36553), (134, 36514),

Gene: VC3_57 Start: 37029, Stop: 36343, Start Num: 14

Candidate Starts for VC3_57:

(Start: 14 @37029 has 104 MA's), (33, 36897), (43, 36855), (45, 36846), (46, 36840), (55, 36774), (64, 36717), (65, 36711), (97, 36504),

Gene: Wander_51 Start: 36338, Stop: 35442, Start Num: 12

Candidate Starts for Wander_51:

(Start: 12 @36338 has 135 MA's), (Start: 16 @36326 has 2 MA's), (18, 36317), (19, 36314), (30, 36236), (41, 36164), (49, 36128), (56, 36068), (63, 36026), (65, 36014), (104, 35720), (110, 35681), (126, 35612), (129, 35591), (130, 35585), (135, 35537), (140, 35459),

Gene: WeiHuaDA_56 Start: 37682, Stop: 37011, Start Num: 15

Candidate Starts for WeiHuaDA_56:

(Start: 15 @37682 has 34 MA's), (52, 37466), (70, 37319), (79, 37268), (84, 37244), (95, 37187), (97, 37157), (107, 37073),

Gene: Whabigail7_55 Start: 37192, Stop: 36506, Start Num: 14

Candidate Starts for Whabigail7_55:

(Start: 14 @37192 has 104 MA's), (40, 37021), (43, 37009), (44, 37003), (47, 36991), (64, 36871), (73, 36802),

Gene: WideWale_55 Start: 37053, Stop: 36358, Start Num: 14

Candidate Starts for WideWale_55:

(6, 37260), (Start: 14 @37053 has 104 MA's), (39, 36891), (52, 36831), (65, 36732), (73, 36663), (77, 36636), (83, 36618), (97, 36516),

Gene: Wilbur_51 Start: 36338, Stop: 35442, Start Num: 12

Candidate Starts for Wilbur_51:

(Start: 12 @36338 has 135 MA's), (Start: 16 @36326 has 2 MA's), (18, 36317), (19, 36314), (30, 36236), (33, 36200), (41, 36164), (49, 36128), (63, 36026), (65, 36014), (104, 35720), (110, 35681), (126, 35612), (129, 35591), (130, 35585), (135, 35537), (140, 35459),

Gene: Wile_50 Start: 36321, Stop: 35437, Start Num: 12

Candidate Starts for Wile_50:

(Start: 12 @36321 has 135 MA's), (18, 36300), (41, 36147), (49, 36111), (63, 36009), (65, 35997), (90, 35847), (104, 35715), (110, 35676), (126, 35607), (130, 35580), (135, 35532), (138, 35496), (139, 35457), (140, 35454),

Gene: Wizard007_51 Start: 36346, Stop: 35450, Start Num: 12

Candidate Starts for Wizard007_51:

(Start: 12 @36346 has 135 MA's), (Start: 16 @36334 has 2 MA's), (18, 36325), (19, 36322), (30, 36244), (33, 36208), (41, 36172), (49, 36136), (63, 36034), (65, 36022), (104, 35728), (110, 35689), (126, 35620), (129, 35599), (130, 35593), (135, 35545), (140, 35467),

Gene: Xena_49 Start: 36287, Stop: 35403, Start Num: 12

Candidate Starts for Xena_49:

(Start: 12 @36287 has 135 MA's), (18, 36266), (41, 36113), (49, 36077), (63, 35975), (65, 35963), (90, 35813), (104, 35681), (110, 35642), (126, 35573), (130, 35546), (135, 35498), (138, 35462), (139, 35423), (140, 35420),

Gene: XianYue_53 Start: 36548, Stop: 35871, Start Num: 14

Candidate Starts for XianYue_53:

(9, 36713), (Start: 14 @36548 has 104 MA's), (24, 36506), (36, 36407), (39, 36392), (52, 36332), (65, 36233), (73, 36161), (77, 36134), (97, 36020),

Gene: Yecey3_55 Start: 36455, Stop: 35679, Start Num: 15

Candidate Starts for Yecey3_55:

(Start: 15 @36455 has 34 MA's), (27, 36389), (30, 36362), (41, 36290), (46, 36269), (49, 36254), (97, 35930), (102, 35873), (111, 35825), (115, 35810), (123, 35765), (134, 35687),

Gene: YoSam321_51 Start: 36335, Stop: 35439, Start Num: 12

Candidate Starts for YoSam321_51:

(Start: 12 @36335 has 135 MA's), (Start: 16 @36323 has 2 MA's), (18, 36314), (19, 36311), (30, 36233), (41, 36161), (49, 36125), (56, 36065), (63, 36023), (65, 36011), (104, 35717), (110, 35678), (126, 35609), (129, 35588), (130, 35582), (135, 35534), (140, 35456),

Gene: Zimmer_51 Start: 37492, Stop: 36821, Start Num: 15

Candidate Starts for Zimmer_51:

(Start: 15 @37492 has 34 MA's), (41, 37327), (46, 37306), (49, 37291), (65, 37177), (72, 37111), (73, 37108), (79, 37078), (97, 36967),