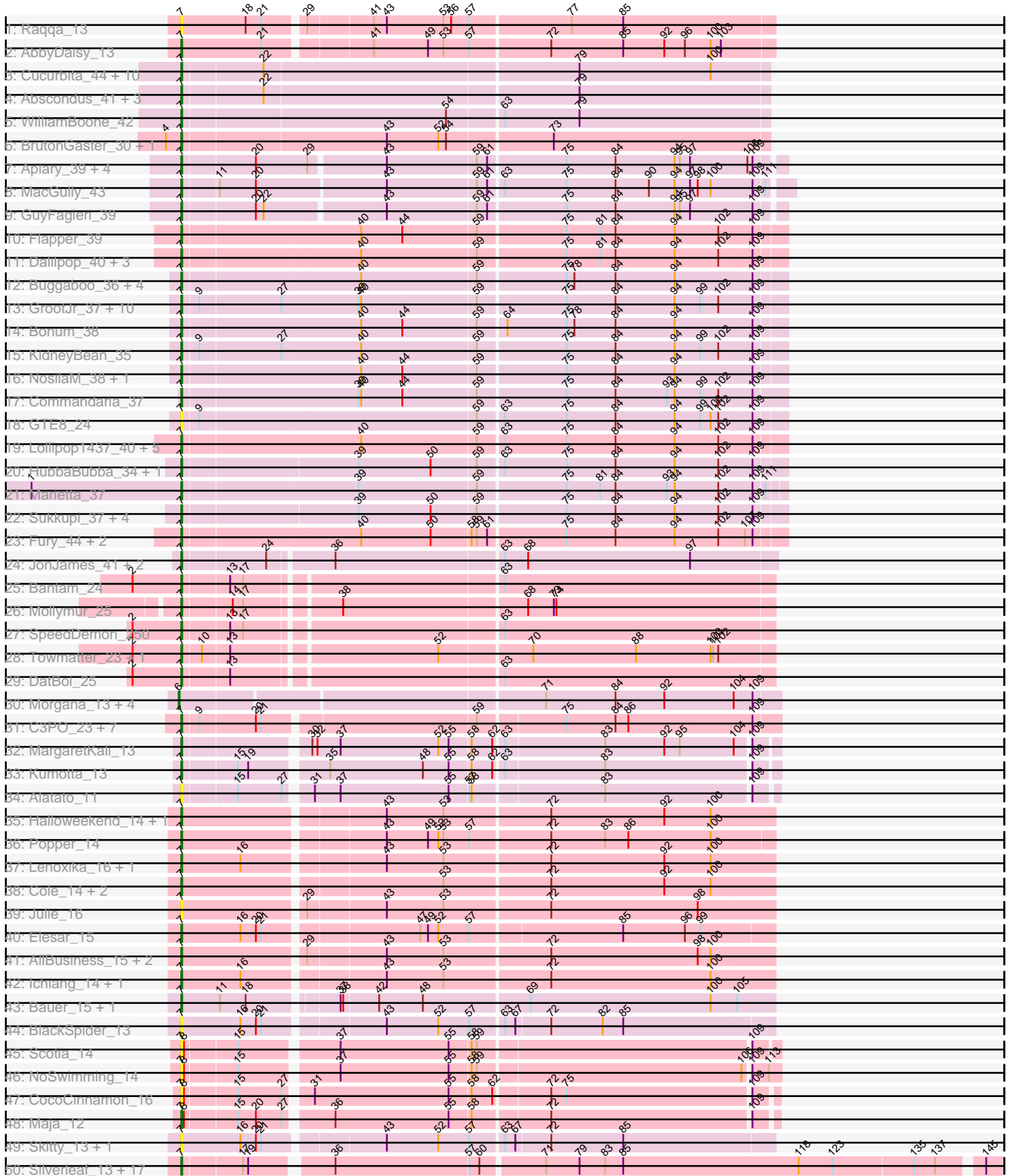
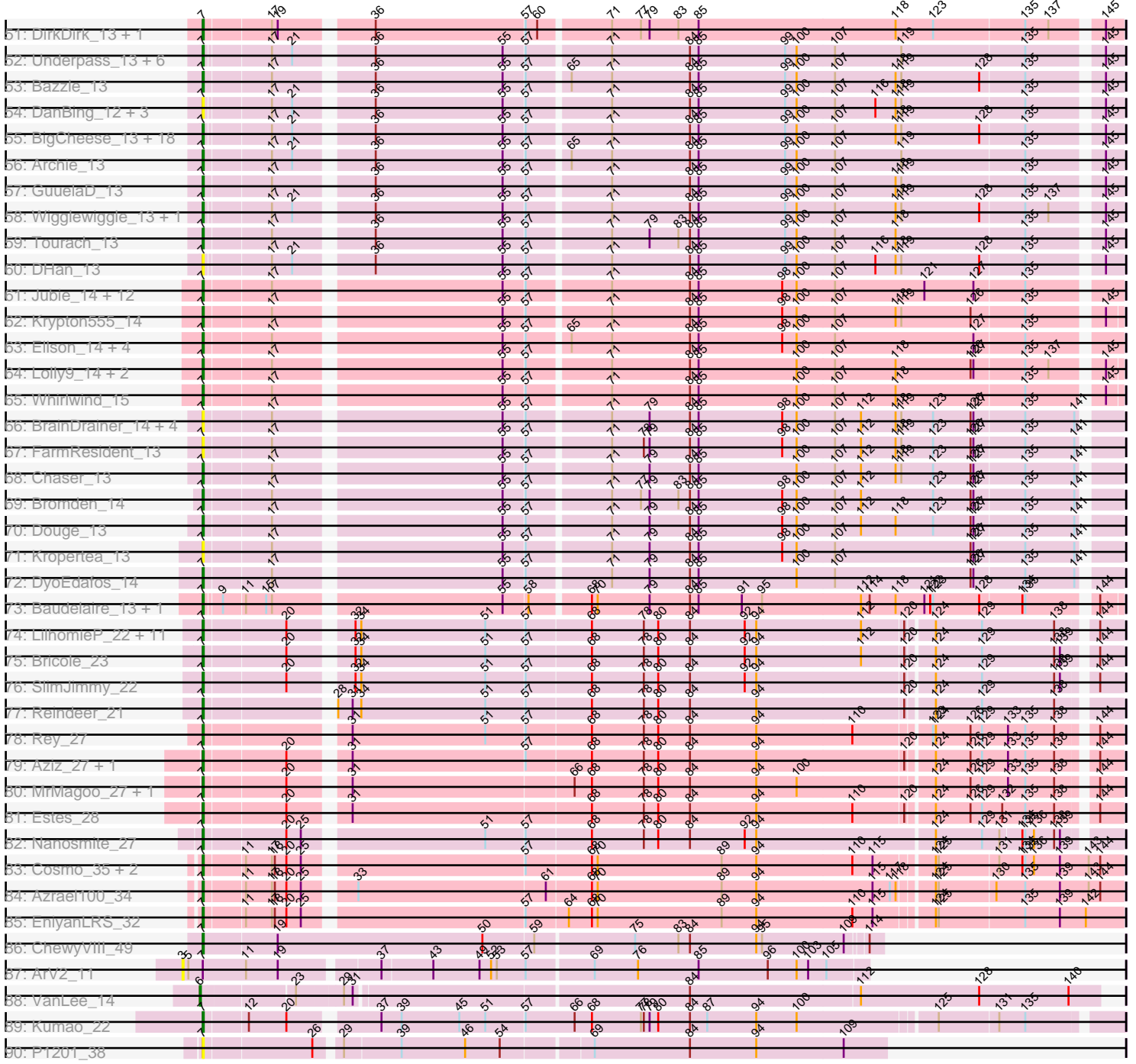


Pham 202647



Pham 202647



Note: Tracks are now grouped by subcluster and scaled. Switching in subcluster is indicated by changes in track color. Track scale is now set by default to display the region 30 bp upstream of start 1 to 30 bp downstream of the last possible start. If this default region is judged to be packed too tightly with annotated starts, the track will be further scaled to only show that region of the ORF with annotated starts. This action will be indicated by adding "Zoomed" to the title. For starts, yellow indicates the location of called starts comprised solely of Glimmer/GeneMark auto-annotations, green indicates the location of called starts with at least 1 manual gene annotation.

Pham 202647 Report

This analysis was run 01/18/25 on database version 583.

Pham number 202647 has 245 members, 57 are drafts.

Phages represented in each track:

- Track 1 : Raqqa_13
- Track 2 : AbbyDaisy_13
- Track 3 : Cucurbita_44, ClubL_42, Geeche_41, Lozinak_42, Engineer_43, Toniann_42, Bachita_44, Norvs_43, Smoothie_43, PhinkBoden_42, Aphelion_42
- Track 4 : Abscondus_41, Dusty_40, Miskis_44, Culver_42
- Track 5 : WilliamBoone_42
- Track 6 : BrutonGaster_30, OneUp_36
- Track 7 : Apiary_39, Polyuyuki_39, Maselop_39, CoffeeBean_39, Braxoaddie_39
- Track 8 : MacGully_43
- Track 9 : GuyFagieri_39
- Track 10 : Flapper_39
- Track 11 : Dalipop_40, Turuncu_39, GRU1_25, GTE5_26
- Track 12 : Buggaboo_36, StarStruck_36, MerCougar_36, Outis_36, SuperSulley_36
- Track 13 : GrootJr_37, Jifall16_34, Foxboro_36, NatB6_35, Wheezy_35, Kurt_35, Tracker_35, Arti_35, NovumRegina_35, Emianna_35, Phomeo_34
- Track 14 : Bonum_38
- Track 15 : KidneyBean_35
- Track 16 : NosilaM_38, Kabluna_38
- Track 17 : Commandaria_37
- Track 18 : GTE8_24
- Track 19 : Lollipop1437_40, Ennea_41, Patio_38, RedRaider_42, Float294_37, Skysand_37
- Track 20 : HubbaBubba_34, WhoseManz_37
- Track 21 : Marietta_37
- Track 22 : Sukkupi_37, BiPauneto_38, NadineRae_35, Yndexa_37, IDyn_36
- Track 23 : Fury_44, Pleakley_44, Scuba_44
- Track 24 : JonJames_41, Cardigan_41, Yvonnetastic_39
- Track 25 : Bantam_24
- Track 26 : Mollymur_25
- Track 27 : SpeedDemon_250
- Track 28 : Towmatter_23, Daredevil_23
- Track 29 : DatBoi_25
- Track 30 : Morgana_13, ModicumRichard_13, ObLaDi_13, Aleemily_13, Cafasso_13
- Track 31 : C3PO_23, Cruella_23, Darwin_26, PotatoChip_23, Kimchi1738_23, Stickynote_25, Zion_23, PeteyPab_22
- Track 32 : MargaretKali_13

- Track 33 : Kumotta_13
- Track 34 : Alatato_11
- Track 35 : Halloweekend_14, Ryan_16
- Track 36 : Popper_14
- Track 37 : Lenoxika_16, Nandita_16
- Track 38 : Cole_14, QuinnAvery_16, Kihatsu_17
- Track 39 : Julie_16
- Track 40 : Elesar_15
- Track 41 : AllBusiness_15, IsHungry_16, Gusanita_14
- Track 42 : Ichiang_14, Zaheer_16
- Track 43 : Bauer_15, Zucker_14
- Track 44 : BlackSpider_13
- Track 45 : Scotia_14
- Track 46 : NoSwimming_14
- Track 47 : CocoCinnamon_16
- Track 48 : Maja_12
- Track 49 : Skitty_13, MrSmee_12
- Track 50 : Silverleaf_13, Appletree2_13, AvadaKedavra_13, Rose5_13, Acquire49_13, Tyson_13, LeBron_13, UPIE_13, Halena_13, CicholasNage_13, Enceladus_13, MAckerman_13, Poochiewood_13, Wamburgxpress_13, Zaria_13, Calm_13, Wyatt2_13, JoeDirt_13
- Track 51 : DirkDirk_13, OhShagHennessy_13
- Track 52 : Underpass_13, LilDestine_13, Kahlid_13, Nicholasp3_13, Finemlucis_13, Gardann_13, Wilder_13
- Track 53 : Bazzle_13
- Track 54 : DanBing_12, Baoshan_12, Claus_13, ZhongYanYuan_12
- Track 55 : BigCheese_13, MkaliMitinis3_13, Faith1_13, Miley16_13, Breezona_13, DrSeegs_13, Lewan_13, BobsGarage_13, Hafay_13, Vetrix_13, Soap141_13, Crossroads_13, Gabriela_13, Zakai_13, Itos_13, Winky_13, Sarshaun_13, Rumpelstiltskin_13, Netyap_13
- Track 56 : Archie_13
- Track 57 : GuuelaD_13
- Track 58 : Wigglewiggles_13, Loadrie_13
- Track 59 : Tourach_13
- Track 60 : DHan_13
- Track 61 : Jubie_14, Bellis_14, Kingsolomon_14, Clautastrophe_14, Finnry_14, Nicholas_14, Moostard_14, Snenia_14, MsGreen_14, Jobypre_14, TriFive_14, Samty_14, Lumos_14
- Track 62 : Krypton555_14
- Track 63 : Ellson_14, BourbonZero_13, DuncansLeg_14, KirDoubleO7_12, LiyuLake_14
- Track 64 : Lolly9_14, MiniMac_14, MiniLon_14
- Track 65 : Whirlwind_15
- Track 66 : BrainDrainer_14, Douzhi_13, Quby_13, Sheng711_13, PYPDinur_13
- Track 67 : FarmResident_13
- Track 68 : Chaser_13
- Track 69 : Bromden_14
- Track 70 : Douge_13
- Track 71 : Kropertea_13
- Track 72 : DyoEdafos_14
- Track 73 : Baudelaire_13, Aegeus_13
- Track 74 : LilhomieP_22, Izel_22, TyDawg_23, Auspice_23, IPhane7_23, Glaske16_24, Skinny_24, Bongo_23, PegLeg_23, Dulcita_24, Diminimus_24,

FreakyGoo_23

- Track 75 : Bricole_23
- Track 76 : SlimJimmy_22
- Track 77 : Reindeer_21
- Track 78 : Rey_27
- Track 79 : Aziz_27, GenevaB15_27
- Track 80 : MrMagoo_27, GardenSalsa_27
- Track 81 : Estes_28
- Track 82 : Nanosmite_27
- Track 83 : Cosmo_35, MaryV_35, Wildcat_35
- Track 84 : Azrael100_34
- Track 85 : EniyanLRS_32
- Track 86 : ChewyVIII_49
- Track 87 : ArV2_11
- Track 88 : VanLee_14
- Track 89 : Kumao_22
- Track 90 : P1201_38

Summary of Final Annotations (See graph section above for start numbers):

The start number called the most often in the published annotations is 7, it was called in 183 of the 188 non-draft genes in the pham.

Genes that call this "Most Annotated" start:

- AbbyDaisy_13, Abscondus_41, Acquire49_13, Aegeus_13, Alatato_11, AllBusiness_15, Aphelion_42, Apiary_39, Appletree2_13, Archie_13, Arti_35, Auspice_23, AvadaKedavra_13, Aziz_27, Azrael100_34, Bachita_44, Bantam_24, Baoshan_12, Baudelaire_13, Bauer_15, Bazzle_13, Bellis_14, BiPauneto_38, BigCheese_13, BlackSpider_13, BobsGarage_13, Bongo_23, Bonum_38, BourbonZero_13, BrainDrainer_14, Braxoaddie_39, Breezona_13, Bricole_23, Bromden_14, BrutonGaster_30, Buggaboo_36, C3PO_23, Calm_13, Cardigan_41, Chaser_13, ChewyVIII_49, CicholasNage_13, Claus_13, Clautastrophe_14, ClubL_42, CocoCinnamon_16, CoffeeBean_39, Cole_14, Commandaria_37, Cosmo_35, Crossroads_13, Cruella_23, Cucurbita_44, Culver_42, DHan_13, Dalilpop_40, DanBing_12, Daredevil_23, Darwin_26, DatBoi_25, Diminimus_24, DirkDirk_13, Douge_13, Douzhi_13, DrSeegs_13, Dulcita_24, DuncansLeg_14, Dusty_40, DyoEdafos_14, Elesar_15, Ellson_14, Emianna_35, Enceladus_13, Engineer_43, EniyanLRS_32, Ennea_41, Estes_28, Faith1_13, FarmResident_13, Finemlucis_13, Finnry_14, Flapper_39, Float294_37, Foxboro_36, FreakyGoo_23, Fury_44, GRU1_25, GTE5_26, GTE8_24, Gabriela_13, Gardann_13, GardenSalsa_27, Geeche_41, GenevaB15_27, Glaske16_24, GrootJr_37, Gusanita_14, GuuelaD_13, GuyFagieri_39, Hafay_13, Halena_13, Halloweekend_14, HubbaBubba_34, IDyn_36, IPhone7_23, Ichiang_14, IsHungry_16, Itos_13, Izel_22, Jifall16_34, Jobypre_14, JoeDirt_13, JonJames_41, Jubie_14, Julie_16, Kabluna_38, Kahlid_13, KidneyBean_35, Kihatsu_17, Kimchi1738_23, Kingsolomon_14, KirDoubleO7_12, Kropertea_13, Krypton555_14, Kumao_22, Kumotta_13, Kurt_35, LeBron_13, Lenoxika_16, Lewan_13, LilDestine_13, LilhomieP_22, LiyuLake_14, Loadrie_13, Lollipop1437_40, Lolly9_14, Lozinak_42, Lumos_14, MAckerman_13, MacGully_43, Maja_12, MargaretKali_13, Marietta_37, MaryV_35, Maselop_39, MerCougar_36, Miley16_13, MiniLon_14, MiniMac_14, Miskis_44, MkaliMitinis3_13,

Mollymur_25, Moostard_14, MrMagoo_27, MrSmee_12, MsGreen_14, NadineRae_35, Nandita_16, Nanosmite_27, NatB6_35, Netyap_13, Nicholas_14, Nicholasp3_13, NoSwimming_14, Norvs_43, NosilaM_38, NovumRegina_35, OhShagHennessy_13, OneUp_36, Outis_36, P1201_38, PYPDinur_13, Patio_38, PegLeg_23, PeteyPab_22, PhinkBoden_42, Phomeo_34, Pleakley_44, Polyuyuki_39, Poochiewood_13, Popper_14, PotatoChip_23, Quby_13, QuinnAvery_16, Raqqa_13, RedRaider_42, Reindeer_21, Rey_27, Rose5_13, Rumpelstiltskin_13, Ryan_16, Samty_14, Sarshaun_13, Scotia_14, Scuba_44, Sheng711_13, Silverleaf_13, Skinny_24, Skitty_13, Skysand_37, SlimJimmy_22, Smoothie_43, Snenia_14, Soap141_13, SpeedDemon_250, StarStruck_36, Stickynote_25, Sukkupi_37, SuperSulley_36, Toniann_42, Tourach_13, Towmatter_23, Tracker_35, TriFive_14, Turuncu_39, TyDawg_23, Tyson_13, UPIE_13, Underpass_13, Vetrix_13, Wamburgexpress_13, Wheezy_35, Whirlwind_15, WhoseManz_37, Wigglewiggles_13, Wildcat_35, Wilder_13, WilliamBoone_42, Winky_13, Wyatt2_13, Yndexa_37, Yvonnestic_39, Zaheer_16, Zakai_13, Zaria_13, ZhongYanYuan_12, Zion_23, Zucker_14,

Genes that have the "Most Annotated" start but do not call it:

- ArV2_11,

Genes that do not have the "Most Annotated" start:

- Aleemily_13, Cafasso_13, ModicumRichard_13, Morgana_13, ObLaDi_13, VanLee_14,

Summary by start number:

Start 3:

- Found in 1 of 245 (0.4%) of genes in pham
- No Manual Annotations of this start.
- Called 100.0% of time when present
- Phage (with cluster) where this start called: ArV2_11 (singleton),

Start 6:

- Found in 6 of 245 (2.4%) of genes in pham
- Manual Annotations of this start: 5 of 188
- Called 100.0% of time when present
- Phage (with cluster) where this start called: Aleemily_13 (DZ), Cafasso_13 (DZ), ModicumRichard_13 (DZ), Morgana_13 (DZ), ObLaDi_13 (DZ), VanLee_14 (singleton),

Start 7:

- Found in 239 of 245 (97.6%) of genes in pham
- Manual Annotations of this start: 183 of 188
- Called 99.6% of time when present
- Phage (with cluster) where this start called: AbbyDaisy_13 (AY), Abscondus_41 (CQ1), Acquire49_13 (L1), Aegeus_13 (L5), Alatato_11 (FB), AllBusiness_15 (FF), Aphelion_42 (CQ1), Apiary_39 (CR), Appletree2_13 (L1), Archie_13 (L2), Arti_35 (CR2), Auspice_23 (M1), AvadaKedavra_13 (L1), Aziz_27 (M2), Azrael100_34 (V), Bachita_44 (CQ1), Bantam_24 (DL), Baoshan_12 (L2), Baudelaire_13 (L5), Bauer_15 (FN), Bazzle_13 (L2), Bellis_14 (L3), BiPauneto_38 (CR4), BigCheese_13 (L2), BlackSpider_13 (FN), BobsGarage_13 (L2), Bongo_23 (M1), Bonum_38 (CR2), BourbonZero_13 (L3), BrainDrainer_14 (L4), Braxoaddie_39 (CR), Breezons_13 (L2), Bricole_23 (M1), Bromden_14 (L4), BrutonGaster_30 (CQ2), Buggaboo_36 (CR2),

C3PO_23 (EN), Calm_13 (L1), Cardigan_41 (DD), Chaser_13 (L4), ChewyVIII_49 (singleton), CicholasNage_13 (L1), Claus_13 (L2), Clautastrophe_14 (L3), ClubL_42 (CQ1), CocoCinnamon_16 (FO), CoffeeBean_39 (CR), Cole_14 (FF), Commandaria_37 (CR2), Cosmo_35 (V), Crossroads_13 (L2), Cruella_23 (EN), Cucurbita_44 (CQ1), Culver_42 (CQ1), DHan_13 (L2), Dalilpop_40 (CR1), DanBing_12 (L2), Daredevil_23 (DL), Darwin_26 (EN), DatBoi_25 (DL), Diminimus_24 (M1), DirkDirk_13 (L1), Douge_13 (L4), Douzhi_13 (L4), DrSeegs_13 (L2), Dulcita_24 (M1), DuncansLeg_14 (L3), Dusty_40 (CQ1), DyoEdafos_14 (L4), Elesar_15 (FF), Ellson_14 (L3), Emianna_35 (CR2), Enceladus_13 (L1), Engineer_43 (CQ1), EniyanLRS_32 (V), Ennea_41 (CR3), Estes_28 (M2), Faith1_13 (L2), FarmResident_13 (L4), Finemlucis_13 (L2), Finnry_14 (L3), Flapper_39 (CR1), Float294_37 (CR3), Foxboro_36 (CR2), FreakyGoo_23 (M1), Fury_44 (CR5), GRU1_25 (CR1), GTE5_26 (CR1), GTE8_24 (CR2), Gabriela_13 (L2), Gardann_13 (L2), GardenSalsa_27 (M2), Geeche_41 (CQ1), GenevaB15_27 (M2), Glaske16_24 (M1), GrootJr_37 (CR2), Gusanita_14 (FF), GuuelaD_13 (L2), GuyFagieri_39 (CR), Hafay_13 (L2), Halena_13 (L1), Halloween_14 (FF), HubbaBubba_34 (CR4), IDyn_36 (CR4), IPhane7_23 (M1), Ichiang_14 (FF), IsHungry_16 (FF), Itos_13 (L2), Izel_22 (M1), Jifall16_34 (CR2), Jobypre_14 (L3), JoeDirt_13 (L1), JonJames_41 (DD), Jubie_14 (L3), Julie_16 (FF), Kabluna_38 (CR2), Kahlid_13 (L2), KidneyBean_35 (CR2), Kihatsu_17 (FF), Kimchi1738_23 (EN), Kingsolomon_14 (L3), KirDoubleO7_12 (L3), Kropertea_13 (L4), Krypton555_14 (L3), Kumao_22 (singleton), Kumotta_13 (FB), Kurt_35 (CR2), LeBron_13 (L1), Lenoxika_16 (FF), Lewan_13 (L2), LilDestine_13 (L2), LilhomieP_22 (M1), LiyuLake_14 (L3), Loadrie_13 (L2), Lollipop1437_40 (CR3), Lolly9_14 (L3), Lozinak_42 (CQ1), Lumos_14 (L3), MAckerman_13 (L1), MacGully_43 (CR), Maja_12 (FO), MargaretKali_13 (FB), Marietta_37 (CR4), MaryV_35 (V), Maselop_39 (CR), MerCougar_36 (CR2), Miley16_13 (L2), MiniLon_14 (L3), MiniMac_14 (L3), Miskis_44 (CQ1), MkaliMitinis3_13 (L2), Mollymur_25 (DL), Moostard_14 (L3), MrMagoo_27 (M2), MrSmee_12 (FQ), MsGreen_14 (L3), NadineRae_35 (CR4), Nandita_16 (FF), Nanosmite_27 (M3), NatB6_35 (CR2), Netyap_13 (L2), Nicholas_14 (L3), Nicholasp3_13 (L2), NoSwimming_14 (FO), Norvs_43 (CQ1), NosilaM_38 (CR2), NovumRegina_35 (CR2), OhShagHennessy_13 (L1), OneUp_36 (CQ2), Outis_36 (CR2), P1201_38 (singleton), PYPDinur_13 (L4), Patio_38 (CR3), PegLeg_23 (M1), PeteyPab_22 (EN), PhinkBoden_42 (CQ1), Phomeo_34 (CR2), Pleakley_44 (CR5), Polyuyuki_39 (CR), Poochiewood_13 (L1), Popper_14 (FF), PotatoChip_23 (EN), Quby_13 (L4), QuinnAvery_16 (FF), Raqqa_13 (AY), RedRaider_42 (CR3), Reindeer_21 (M1), Rey_27 (M2), Rose5_13 (L1), Rumpelstiltskin_13 (L2), Ryan_16 (FF), Samty_14 (L3), Sarshaun_13 (L2), Scotia_14 (FO), Scuba_44 (CR5), Sheng711_13 (L4), Silverleaf_13 (L1), Skinny_24 (M1), Skitty_13 (FQ), Skysand_37 (CR3), SlimJimmy_22 (M1), Smoothie_43 (CQ1), Snenia_14 (L3), Soap141_13 (L2), SpeedDemon_250 (DL), StarStruck_36 (CR2), Stickynote_25 (EN), Sukkupi_37 (CR4), SuperSulley_36 (CR2), Toniann_42 (CQ1), Tourach_13 (L2), Towmatter_23 (DL), Tracker_35 (CR2), TriFive_14 (L3), Turuncu_39 (CR1), TyDawg_23 (M1), Tyson_13 (L1), UPIE_13 (L1), Underpass_13 (L2), Vetrax_13 (L2), Wamburgxpress_13 (L1), Wheezy_35 (CR2), Whirlwind_15 (L3), WhoseManz_37 (CR4), Wigglewiggle_13 (L2), Wildcat_35 (V), Wilder_13 (L2), WilliamBoone_42 (CQ1), Winky_13 (L2), Wyatt2_13 (L1), Yndexa_37 (CR4), Yvonnestic_39 (DD), Zaheer_16 (FF), Zakai_13 (L2), Zaria_13 (L1), ZhongYanYuan_12 (L2), Zion_23 (EN), Zucker_14 (FN),

Summary by clusters:

There are 28 clusters represented in this pham: FQ, singleton, M3, DD, V, DL, FB, M1, FF, M2, FN, FO, CQ2, CQ1, EN, L4, L5, L2, L3, L1, AY, CR, CR2, CR3, CR1, CR4, CR5, DZ,

Info for manual annotations of cluster AY:

- Start number 7 was manually annotated 1 time for cluster AY.

Info for manual annotations of cluster CQ1:

- Start number 7 was manually annotated 12 times for cluster CQ1.

Info for manual annotations of cluster CQ2:

- Start number 7 was manually annotated 2 times for cluster CQ2.

Info for manual annotations of cluster CR:

- Start number 7 was manually annotated 7 times for cluster CR.

Info for manual annotations of cluster CR1:

- Start number 7 was manually annotated 3 times for cluster CR1.

Info for manual annotations of cluster CR2:

- Start number 7 was manually annotated 20 times for cluster CR2.

Info for manual annotations of cluster CR3:

- Start number 7 was manually annotated 5 times for cluster CR3.

Info for manual annotations of cluster CR4:

- Start number 7 was manually annotated 7 times for cluster CR4.

Info for manual annotations of cluster CR5:

- Start number 7 was manually annotated 2 times for cluster CR5.

Info for manual annotations of cluster DD:

- Start number 7 was manually annotated 2 times for cluster DD.

Info for manual annotations of cluster DL:

- Start number 7 was manually annotated 5 times for cluster DL.

Info for manual annotations of cluster DZ:

- Start number 6 was manually annotated 4 times for cluster DZ.

Info for manual annotations of cluster EN:

- Start number 7 was manually annotated 8 times for cluster EN.

Info for manual annotations of cluster FB:

- Start number 7 was manually annotated 2 times for cluster FB.

Info for manual annotations of cluster FF:

- Start number 7 was manually annotated 8 times for cluster FF.

Info for manual annotations of cluster FN:

- Start number 7 was manually annotated 2 times for cluster FN.

Info for manual annotations of cluster FO:

- Start number 7 was manually annotated 1 time for cluster FO.

Info for manual annotations of cluster L1:

- Start number 7 was manually annotated 19 times for cluster L1.

Info for manual annotations of cluster L2:

- Start number 7 was manually annotated 28 times for cluster L2.

Info for manual annotations of cluster L3:

- Start number 7 was manually annotated 16 times for cluster L3.

Info for manual annotations of cluster L4:

- Start number 7 was manually annotated 4 times for cluster L4.

Info for manual annotations of cluster L5:

- Start number 7 was manually annotated 2 times for cluster L5.

Info for manual annotations of cluster M1:

- Start number 7 was manually annotated 13 times for cluster M1.

Info for manual annotations of cluster M2:

- Start number 7 was manually annotated 6 times for cluster M2.

Info for manual annotations of cluster M3:

- Start number 7 was manually annotated 1 time for cluster M3.

Info for manual annotations of cluster V:

- Start number 7 was manually annotated 5 times for cluster V.

Gene Information:

Gene: AbbyDaisy_13 Start: 7857, Stop: 8522, Start Num: 7

Candidate Starts for AbbyDaisy_13:

(Start: 7 @7857 has 183 MA's), (21, 7950), (41, 8064), (49, 8127), (53, 8145), (57, 8175), (72, 8265), (85, 8349), (92, 8397), (96, 8421), (100, 8451), (103, 8463),

Gene: Abscondus_41 Start: 17642, Stop: 18307, Start Num: 7

Candidate Starts for Abscondus_41:

(Start: 7 @17642 has 183 MA's), (22, 17732), (79, 18089),

Gene: Acquire49_13 Start: 8989, Stop: 9891, Start Num: 7

Candidate Starts for Acquire49_13:

(Start: 7 @8989 has 183 MA's), (17, 9055), (19, 9061), (36, 9145), (57, 9298), (60, 9310), (71, 9379), (79, 9418), (83, 9448), (85, 9469), (118, 9673), (123, 9712), (135, 9805), (137, 9829), (145, 9874),

Gene: Aegeus_13 Start: 8615, Stop: 9511, Start Num: 7

Candidate Starts for Aegeus_13:

(Start: 7 @8615 has 183 MA's), (9, 8630), (11, 8651), (15, 8672), (17, 8678), (55, 8900), (58, 8924), (68, 8981), (70, 8987), (79, 9041), (84, 9083), (85, 9092), (91, 9137), (95, 9158), (112, 9260), (114, 9269), (118, 9296), (121, 9326), (122, 9332), (123, 9335), (128, 9383), (134, 9425), (135, 9428), (144,

9491),

Gene: Alata_11 Start: 7604, Stop: 8251, Start Num: 7

Candidate Starts for Alata_11:

(Start: 7 @7604 has 183 MA's), (15, 7664), (27, 7715), (31, 7736), (37, 7766), (55, 7892), (57, 7913), (58, 7916), (83, 8063), (109, 8228),

Gene: Aleemily_13 Start: 8905, Stop: 9573, Start Num: 6

Candidate Starts for Aleemily_13:

(Start: 6 @8905 has 5 MA's), (71, 9307), (84, 9388), (92, 9445), (104, 9526), (109, 9547),

Gene: AllBusiness_15 Start: 9307, Stop: 9975, Start Num: 7

Candidate Starts for AllBusiness_15:

(Start: 7 @9307 has 183 MA's), (29, 9442), (43, 9529), (53, 9595), (72, 9715), (98, 9886), (100, 9901),

Gene: Aphelion_42 Start: 17911, Stop: 18576, Start Num: 7

Candidate Starts for Aphelion_42:

(Start: 7 @17911 has 183 MA's), (22, 18001), (79, 18358), (100, 18511),

Gene: Apiary_39 Start: 23228, Stop: 23896, Start Num: 7

Candidate Starts for Apiary_39:

(Start: 7 @23228 has 183 MA's), (20, 23309), (29, 23366), (43, 23450), (59, 23552), (61, 23564), (75, 23651), (84, 23708), (94, 23777), (95, 23783), (97, 23795), (108, 23861), (109, 23867),

Gene: Appletree2_13 Start: 8963, Stop: 9865, Start Num: 7

Candidate Starts for Appletree2_13:

(Start: 7 @8963 has 183 MA's), (17, 9029), (19, 9035), (36, 9119), (57, 9272), (60, 9284), (71, 9353), (79, 9392), (83, 9422), (85, 9443), (118, 9647), (123, 9686), (135, 9779), (137, 9803), (145, 9848),

Gene: ArV2_11 Start: 7388, Stop: 8074, Start Num: 3

Candidate Starts for ArV2_11:

(3, 7388), (5, 7394), (Start: 7 @7409 has 183 MA's), (11, 7454), (19, 7487), (37, 7580), (43, 7631), (49, 7679), (52, 7691), (53, 7697), (57, 7727), (69, 7793), (76, 7838), (85, 7901), (96, 7973), (100, 8003), (103, 8015), (105, 8033),

Gene: Archie_13 Start: 8948, Stop: 9850, Start Num: 7

Candidate Starts for Archie_13:

(Start: 7 @8948 has 183 MA's), (17, 9014), (21, 9035), (36, 9104), (55, 9236), (57, 9257), (65, 9296), (71, 9338), (84, 9419), (85, 9428), (99, 9518), (100, 9530), (107, 9569), (119, 9638), (135, 9764), (145, 9833),

Gene: Arti_35 Start: 21382, Stop: 22065, Start Num: 7

Candidate Starts for Arti_35:

(Start: 7 @21382 has 183 MA's), (9, 21400), (27, 21493), (39, 21580), (40, 21583), (59, 21715), (75, 21814), (84, 21871), (94, 21940), (99, 21970), (102, 21991), (109, 22030),

Gene: Auspice_23 Start: 12816, Stop: 13715, Start Num: 7

Candidate Starts for Auspice_23:

(Start: 7 @12816 has 183 MA's), (20, 12897), (32, 12951), (34, 12957), (51, 13086), (57, 13125), (68, 13191), (78, 13245), (80, 13260), (84, 13293), (92, 13350), (94, 13362), (112, 13470), (120, 13512), (124, 13536), (129, 13584), (138, 13659), (144, 13692),

Gene: AvadaKedavra_13 Start: 8989, Stop: 9891, Start Num: 7

Candidate Starts for AvadaKedavra_13:

(Start: 7 @8989 has 183 MA's), (17, 9055), (19, 9061), (36, 9145), (57, 9298), (60, 9310), (71, 9379), (79, 9418), (83, 9448), (85, 9469), (118, 9673), (123, 9712), (135, 9805), (137, 9829), (145, 9874),

Gene: Aziz_27 Start: 13394, Stop: 14293, Start Num: 7

Candidate Starts for Aziz_27:

(Start: 7 @13394 has 183 MA's), (20, 13475), (31, 13526), (57, 13703), (68, 13769), (78, 13823), (80, 13838), (84, 13871), (94, 13940), (120, 14090), (124, 14114), (126, 14150), (129, 14162), (133, 14189), (135, 14207), (138, 14237), (144, 14270),

Gene: Azrael100_34 Start: 15887, Stop: 16798, Start Num: 7

Candidate Starts for Azrael100_34:

(Start: 7 @15887 has 183 MA's), (11, 15926), (17, 15953), (18, 15956), (20, 15968), (25, 15983), (33, 16025), (61, 16217), (68, 16262), (70, 16268), (89, 16397), (94, 16433), (115, 16553), (117, 16571), (118, 16577), (124, 16607), (125, 16610), (130, 16667), (135, 16697), (139, 16733), (143, 16763), (144, 16775),

Gene: Bachita_44 Start: 18344, Stop: 19009, Start Num: 7

Candidate Starts for Bachita_44:

(Start: 7 @18344 has 183 MA's), (22, 18434), (79, 18791), (100, 18944),

Gene: Bantam_24 Start: 15333, Stop: 15989, Start Num: 7

Candidate Starts for Bantam_24:

(2, 15276), (Start: 7 @15333 has 183 MA's), (13, 15384), (17, 15399), (63, 15678),

Gene: Baoshan_12 Start: 8830, Stop: 9729, Start Num: 7

Candidate Starts for Baoshan_12:

(Start: 7 @8830 has 183 MA's), (17, 8893), (21, 8914), (36, 8983), (55, 9115), (57, 9136), (71, 9217), (84, 9298), (85, 9307), (99, 9397), (100, 9409), (107, 9448), (116, 9490), (118, 9511), (119, 9517), (135, 9643), (145, 9712),

Gene: Baudelaire_13 Start: 8615, Stop: 9511, Start Num: 7

Candidate Starts for Baudelaire_13:

(Start: 7 @8615 has 183 MA's), (9, 8630), (11, 8651), (15, 8672), (17, 8678), (55, 8900), (58, 8924), (68, 8981), (70, 8987), (79, 9041), (84, 9083), (85, 9092), (91, 9137), (95, 9158), (112, 9260), (114, 9269), (118, 9296), (121, 9326), (122, 9332), (123, 9335), (128, 9383), (134, 9425), (135, 9428), (144, 9491),

Gene: Bauer_15 Start: 9233, Stop: 9898, Start Num: 7

Candidate Starts for Bauer_15:

(Start: 7 @9233 has 183 MA's), (11, 9278), (18, 9308), (37, 9401), (38, 9404), (42, 9443), (48, 9494), (69, 9614), (100, 9824), (105, 9854),

Gene: Bazzle_13 Start: 8951, Stop: 9853, Start Num: 7

Candidate Starts for Bazzle_13:

(Start: 7 @8951 has 183 MA's), (17, 9017), (36, 9107), (55, 9239), (57, 9260), (65, 9299), (71, 9341), (84, 9422), (85, 9431), (99, 9521), (100, 9533), (107, 9572), (118, 9635), (119, 9641), (128, 9722), (135, 9767), (145, 9836),

Gene: Bellis_14 Start: 9118, Stop: 10020, Start Num: 7

Candidate Starts for Bellis_14:

(Start: 7 @9118 has 183 MA's), (17, 9184), (55, 9406), (57, 9427), (71, 9508), (84, 9589), (85, 9598), (98, 9685), (100, 9700), (107, 9739), (121, 9832), (127, 9883), (135, 9934),

Gene: BiPauneto_38 Start: 21225, Stop: 21905, Start Num: 7

Candidate Starts for BiPauneto_38:

(Start: 7 @21225 has 183 MA's), (39, 21420), (50, 21504), (59, 21555), (75, 21654), (84, 21711), (94, 21780), (102, 21831), (109, 21870),

Gene: BigCheese_13 Start: 9002, Stop: 9901, Start Num: 7

Candidate Starts for BigCheese_13:

(Start: 7 @9002 has 183 MA's), (17, 9065), (21, 9086), (36, 9155), (55, 9287), (57, 9308), (71, 9389), (84, 9470), (85, 9479), (99, 9569), (100, 9581), (107, 9620), (118, 9683), (119, 9689), (128, 9770), (135, 9815), (145, 9884),

Gene: BlackSpider_13 Start: 8260, Stop: 8922, Start Num: 7

Candidate Starts for BlackSpider_13:

(Start: 7 @8260 has 183 MA's), (16, 8329), (20, 8347), (21, 8353), (43, 8482), (52, 8542), (57, 8578), (63, 8614), (67, 8626), (72, 8665), (82, 8725), (85, 8749),

Gene: BobsGarage_13 Start: 9002, Stop: 9901, Start Num: 7

Candidate Starts for BobsGarage_13:

(Start: 7 @9002 has 183 MA's), (17, 9065), (21, 9086), (36, 9155), (55, 9287), (57, 9308), (71, 9389), (84, 9470), (85, 9479), (99, 9569), (100, 9581), (107, 9620), (118, 9683), (119, 9689), (128, 9770), (135, 9815), (145, 9884),

Gene: Bongo_23 Start: 12816, Stop: 13715, Start Num: 7

Candidate Starts for Bongo_23:

(Start: 7 @12816 has 183 MA's), (20, 12897), (32, 12951), (34, 12957), (51, 13086), (57, 13125), (68, 13191), (78, 13245), (80, 13260), (84, 13293), (92, 13350), (94, 13362), (112, 13470), (120, 13512), (124, 13536), (129, 13584), (138, 13659), (144, 13692),

Gene: Bonum_38 Start: 21700, Stop: 22383, Start Num: 7

Candidate Starts for Bonum_38:

(Start: 7 @21700 has 183 MA's), (40, 21901), (44, 21949), (59, 22033), (64, 22063), (75, 22132), (78, 22141), (84, 22189), (94, 22258), (109, 22348),

Gene: BourbonZero_13 Start: 9125, Stop: 10027, Start Num: 7

Candidate Starts for BourbonZero_13:

(Start: 7 @9125 has 183 MA's), (17, 9191), (55, 9413), (57, 9434), (65, 9473), (71, 9515), (84, 9596), (85, 9605), (98, 9692), (100, 9707), (107, 9746), (127, 9890), (135, 9941),

Gene: BrainDrainer_14 Start: 8811, Stop: 9713, Start Num: 7

Candidate Starts for BrainDrainer_14:

(Start: 7 @8811 has 183 MA's), (17, 8877), (55, 9099), (57, 9120), (71, 9201), (79, 9240), (84, 9282), (85, 9291), (98, 9378), (100, 9393), (107, 9432), (112, 9459), (118, 9495), (119, 9501), (123, 9534), (126, 9573), (127, 9576), (135, 9627), (141, 9678),

Gene: Braxoaddie_39 Start: 23217, Stop: 23885, Start Num: 7

Candidate Starts for Braxoaddie_39:

(Start: 7 @23217 has 183 MA's), (20, 23298), (29, 23355), (43, 23439), (59, 23541), (61, 23553), (75, 23640), (84, 23697), (94, 23766), (95, 23772), (97, 23784), (108, 23850), (109, 23856),

Gene: Breezona_13 Start: 9002, Stop: 9901, Start Num: 7

Candidate Starts for Breezona_13:

(Start: 7 @9002 has 183 MA's), (17, 9065), (21, 9086), (36, 9155), (55, 9287), (57, 9308), (71, 9389), (84, 9470), (85, 9479), (99, 9569), (100, 9581), (107, 9620), (118, 9683), (119, 9689), (128, 9770), (135, 9815), (145, 9884),

Gene: Bricole_23 Start: 12815, Stop: 13714, Start Num: 7

Candidate Starts for Bricole_23:

(Start: 7 @12815 has 183 MA's), (20, 12896), (32, 12950), (34, 12956), (51, 13085), (57, 13124), (68, 13190), (78, 13244), (80, 13259), (84, 13292), (92, 13349), (94, 13361), (112, 13469), (120, 13511), (124, 13535), (129, 13583), (138, 13658), (139, 13664), (144, 13691),

Gene: Bromden_14 Start: 9135, Stop: 10037, Start Num: 7

Candidate Starts for Bromden_14:

(Start: 7 @9135 has 183 MA's), (17, 9201), (55, 9423), (57, 9444), (71, 9525), (77, 9555), (79, 9564), (83, 9594), (84, 9606), (85, 9615), (98, 9702), (100, 9717), (107, 9756), (112, 9783), (123, 9858), (126, 9897), (127, 9900), (135, 9951), (141, 10002),

Gene: BrutonGaster_30 Start: 14524, Stop: 15189, Start Num: 7

Candidate Starts for BrutonGaster_30:

(4, 14506), (Start: 7 @14524 has 183 MA's), (43, 14755), (52, 14815), (54, 14824), (73, 14941),

Gene: Buggaboo_36 Start: 22185, Stop: 22868, Start Num: 7

Candidate Starts for Buggaboo_36:

(Start: 7 @22185 has 183 MA's), (40, 22386), (59, 22518), (75, 22617), (78, 22626), (84, 22674), (94, 22743), (109, 22833),

Gene: C3PO_23 Start: 15961, Stop: 16623, Start Num: 7

Candidate Starts for C3PO_23:

(Start: 7 @15961 has 183 MA's), (9, 15979), (20, 16042), (21, 16048), (59, 16282), (75, 16378), (84, 16435), (86, 16450), (109, 16594),

Gene: Cafasso_13 Start: 8905, Stop: 9573, Start Num: 6

Candidate Starts for Cafasso_13:

(Start: 6 @8905 has 5 MA's), (71, 9307), (84, 9388), (92, 9445), (104, 9526), (109, 9547),

Gene: Calm_13 Start: 8990, Stop: 9892, Start Num: 7

Candidate Starts for Calm_13:

(Start: 7 @8990 has 183 MA's), (17, 9056), (19, 9062), (36, 9146), (57, 9299), (60, 9311), (71, 9380), (79, 9419), (83, 9449), (85, 9470), (118, 9674), (123, 9713), (135, 9806), (137, 9830), (145, 9875),

Gene: Cardigan_41 Start: 19485, Stop: 20150, Start Num: 7

Candidate Starts for Cardigan_41:

(Start: 7 @19485 has 183 MA's), (24, 19578), (36, 19647), (63, 19836), (68, 19863), (97, 20052),

Gene: Chaser_13 Start: 8726, Stop: 9628, Start Num: 7

Candidate Starts for Chaser_13:

(Start: 7 @8726 has 183 MA's), (17, 8792), (55, 9014), (57, 9035), (71, 9116), (79, 9155), (84, 9197), (85, 9206), (100, 9308), (107, 9347), (112, 9374), (118, 9410), (119, 9416), (123, 9449), (126, 9488), (127, 9491), (135, 9542), (141, 9593),

Gene: ChewyVIII_49 Start: 28800, Stop: 29486, Start Num: 7

Candidate Starts for ChewyVIII_49:

(Start: 7 @28800 has 183 MA's), (19, 28875), (50, 29088), (59, 29139), (75, 29238), (83, 29283), (84, 29295), (94, 29364), (95, 29370), (109, 29454), (114, 29472),

Gene: CicholasNage_13 Start: 8990, Stop: 9892, Start Num: 7

Candidate Starts for CicholasNage_13:

(Start: 7 @8990 has 183 MA's), (17, 9056), (19, 9062), (36, 9146), (57, 9299), (60, 9311), (71, 9380), (79, 9419), (83, 9449), (85, 9470), (118, 9674), (123, 9713), (135, 9806), (137, 9830), (145, 9875),

Gene: Claus_13 Start: 9010, Stop: 9909, Start Num: 7

Candidate Starts for Claus_13:

(Start: 7 @9010 has 183 MA's), (17, 9073), (21, 9094), (36, 9163), (55, 9295), (57, 9316), (71, 9397), (84, 9478), (85, 9487), (99, 9577), (100, 9589), (107, 9628), (116, 9670), (118, 9691), (119, 9697), (135, 9823), (145, 9892),

Gene: Clautastrophe_14 Start: 9123, Stop: 10025, Start Num: 7

Candidate Starts for Clautastrophe_14:

(Start: 7 @9123 has 183 MA's), (17, 9189), (55, 9411), (57, 9432), (71, 9513), (84, 9594), (85, 9603), (98, 9690), (100, 9705), (107, 9744), (121, 9837), (127, 9888), (135, 9939),

Gene: ClubL_42 Start: 17833, Stop: 18498, Start Num: 7

Candidate Starts for ClubL_42:

(Start: 7 @17833 has 183 MA's), (22, 17923), (79, 18280), (100, 18433),

Gene: CocoCinnamon_16 Start: 9346, Stop: 9993, Start Num: 7

Candidate Starts for CocoCinnamon_16:

(Start: 7 @9346 has 183 MA's), (8, 9349), (15, 9406), (27, 9457), (31, 9478), (55, 9634), (58, 9658), (62, 9682), (72, 9742), (75, 9760), (109, 9970),

Gene: CoffeeBean_39 Start: 23172, Stop: 23840, Start Num: 7

Candidate Starts for CoffeeBean_39:

(Start: 7 @23172 has 183 MA's), (20, 23253), (29, 23310), (43, 23394), (59, 23496), (61, 23508), (75, 23595), (84, 23652), (94, 23721), (95, 23727), (97, 23739), (108, 23805), (109, 23811),

Gene: Cole_14 Start: 8911, Stop: 9579, Start Num: 7

Candidate Starts for Cole_14:

(Start: 7 @8911 has 183 MA's), (53, 9199), (72, 9319), (92, 9451), (100, 9505),

Gene: Commandaria_37 Start: 22702, Stop: 23388, Start Num: 7

Candidate Starts for Commandaria_37:

(Start: 7 @22702 has 183 MA's), (39, 22900), (40, 22903), (44, 22951), (59, 23035), (75, 23134), (84, 23191), (93, 23251), (94, 23260), (99, 23290), (102, 23311), (109, 23350),

Gene: Cosmo_35 Start: 15894, Stop: 16805, Start Num: 7

Candidate Starts for Cosmo_35:

(Start: 7 @15894 has 183 MA's), (11, 15933), (17, 15960), (18, 15963), (20, 15975), (25, 15990), (57, 16203), (68, 16269), (70, 16275), (89, 16404), (94, 16440), (110, 16539), (115, 16560), (124, 16614), (125, 16617), (131, 16677), (134, 16701), (135, 16704), (136, 16713), (139, 16740), (143, 16770), (144, 16782),

Gene: Crossroads_13 Start: 9002, Stop: 9901, Start Num: 7

Candidate Starts for Crossroads_13:

(Start: 7 @9002 has 183 MA's), (17, 9065), (21, 9086), (36, 9155), (55, 9287), (57, 9308), (71, 9389), (84, 9470), (85, 9479), (99, 9569), (100, 9581), (107, 9620), (118, 9683), (119, 9689), (128, 9770), (135, 9815), (145, 9884),

Gene: Cruella_23 Start: 15961, Stop: 16623, Start Num: 7

Candidate Starts for Cruella_23:

(Start: 7 @15961 has 183 MA's), (9, 15979), (20, 16042), (21, 16048), (59, 16282), (75, 16378), (84, 16435), (86, 16450), (109, 16594),

Gene: Cucurbita_44 Start: 19203, Stop: 19868, Start Num: 7

Candidate Starts for Cucurbita_44:

(Start: 7 @19203 has 183 MA's), (22, 19293), (79, 19650), (100, 19803),

Gene: Culver_42 Start: 17642, Stop: 18307, Start Num: 7

Candidate Starts for Culver_42:

(Start: 7 @17642 has 183 MA's), (22, 17732), (79, 18089),

Gene: DHan_13 Start: 8946, Stop: 9845, Start Num: 7

Candidate Starts for DHan_13:

(Start: 7 @8946 has 183 MA's), (17, 9009), (21, 9030), (36, 9099), (55, 9231), (57, 9252), (71, 9333), (84, 9414), (85, 9423), (99, 9513), (100, 9525), (107, 9564), (116, 9606), (118, 9627), (119, 9633), (128, 9714), (135, 9759), (145, 9828),

Gene: Dalilpop_40 Start: 23693, Stop: 24376, Start Num: 7

Candidate Starts for Dalilpop_40:

(Start: 7 @23693 has 183 MA's), (40, 23894), (59, 24026), (75, 24125), (81, 24164), (84, 24182), (94, 24251), (102, 24302), (109, 24341),

Gene: DanBing_12 Start: 8829, Stop: 9728, Start Num: 7

Candidate Starts for DanBing_12:

(Start: 7 @8829 has 183 MA's), (17, 8892), (21, 8913), (36, 8982), (55, 9114), (57, 9135), (71, 9216), (84, 9297), (85, 9306), (99, 9396), (100, 9408), (107, 9447), (116, 9489), (118, 9510), (119, 9516), (135, 9642), (145, 9711),

Gene: Daredevil_23 Start: 13726, Stop: 14382, Start Num: 7

Candidate Starts for Daredevil_23:

(2, 13669), (Start: 7 @13726 has 183 MA's), (10, 13747), (13, 13777), (52, 14002), (70, 14104), (88, 14224), (100, 14311), (101, 14314), (102, 14320),

Gene: Darwin_26 Start: 16706, Stop: 17368, Start Num: 7

Candidate Starts for Darwin_26:

(Start: 7 @16706 has 183 MA's), (9, 16724), (20, 16787), (21, 16793), (59, 17027), (75, 17123), (84, 17180), (86, 17195), (109, 17339),

Gene: DatBoi_25 Start: 16122, Stop: 16778, Start Num: 7

Candidate Starts for DatBoi_25:

(2, 16065), (Start: 7 @16122 has 183 MA's), (13, 16173), (63, 16467),

Gene: Diminimus_24 Start: 12815, Stop: 13714, Start Num: 7

Candidate Starts for Diminimus_24:

(Start: 7 @12815 has 183 MA's), (20, 12896), (32, 12950), (34, 12956), (51, 13085), (57, 13124), (68, 13190), (78, 13244), (80, 13259), (84, 13292), (92, 13349), (94, 13361), (112, 13469), (120, 13511), (124, 13535), (129, 13583), (138, 13658), (144, 13691),

Gene: DirkDirk_13 Start: 8991, Stop: 9893, Start Num: 7

Candidate Starts for DirkDirk_13:

(Start: 7 @8991 has 183 MA's), (17, 9057), (19, 9063), (36, 9147), (57, 9300), (60, 9312), (71, 9381), (77, 9411), (79, 9420), (83, 9450), (85, 9471), (118, 9675), (123, 9714), (135, 9807), (137, 9831), (145, 9876),

Gene: Douge_13 Start: 8672, Stop: 9574, Start Num: 7

Candidate Starts for Douge_13:

(Start: 7 @8672 has 183 MA's), (17, 8738), (55, 8960), (57, 8981), (71, 9062), (79, 9101), (84, 9143), (85, 9152), (98, 9239), (100, 9254), (107, 9293), (112, 9320), (118, 9356), (123, 9395), (126, 9434), (127, 9437), (135, 9488), (141, 9539),

Gene: Douzhi_13 Start: 8672, Stop: 9574, Start Num: 7

Candidate Starts for Douzhi_13:

(Start: 7 @8672 has 183 MA's), (17, 8738), (55, 8960), (57, 8981), (71, 9062), (79, 9101), (84, 9143), (85, 9152), (98, 9239), (100, 9254), (107, 9293), (112, 9320), (118, 9356), (119, 9362), (123, 9395), (126, 9434), (127, 9437), (135, 9488), (141, 9539),

Gene: DrSeegs_13 Start: 9002, Stop: 9901, Start Num: 7

Candidate Starts for DrSeegs_13:

(Start: 7 @9002 has 183 MA's), (17, 9065), (21, 9086), (36, 9155), (55, 9287), (57, 9308), (71, 9389), (84, 9470), (85, 9479), (99, 9569), (100, 9581), (107, 9620), (118, 9683), (119, 9689), (128, 9770), (135, 9815), (145, 9884),

Gene: Dulcita_24 Start: 12815, Stop: 13714, Start Num: 7

Candidate Starts for Dulcita_24:

(Start: 7 @12815 has 183 MA's), (20, 12896), (32, 12950), (34, 12956), (51, 13085), (57, 13124), (68, 13190), (78, 13244), (80, 13259), (84, 13292), (92, 13349), (94, 13361), (112, 13469), (120, 13511), (124, 13535), (129, 13583), (138, 13658), (144, 13691),

Gene: DuncansLeg_14 Start: 9127, Stop: 10029, Start Num: 7

Candidate Starts for DuncansLeg_14:

(Start: 7 @9127 has 183 MA's), (17, 9193), (55, 9415), (57, 9436), (65, 9475), (71, 9517), (84, 9598), (85, 9607), (98, 9694), (100, 9709), (107, 9748), (127, 9892), (135, 9943),

Gene: Dusty_40 Start: 17642, Stop: 18307, Start Num: 7

Candidate Starts for Dusty_40:

(Start: 7 @17642 has 183 MA's), (22, 17732), (79, 18089),

Gene: DyoEdafos_14 Start: 8883, Stop: 9785, Start Num: 7

Candidate Starts for DyoEdafos_14:

(Start: 7 @8883 has 183 MA's), (17, 8949), (55, 9171), (57, 9192), (71, 9273), (79, 9312), (84, 9354), (85, 9363), (100, 9465), (107, 9504), (126, 9645), (127, 9648), (135, 9699), (141, 9750),

Gene: Elesar_15 Start: 9307, Stop: 9969, Start Num: 7

Candidate Starts for Elesar_15:

(Start: 7 @9307 has 183 MA's), (16, 9376), (20, 9394), (21, 9400), (47, 9568), (49, 9577), (52, 9589), (57, 9625), (85, 9796), (96, 9868), (99, 9886),

Gene: Ellson_14 Start: 9135, Stop: 10037, Start Num: 7

Candidate Starts for Ellson_14:

(Start: 7 @9135 has 183 MA's), (17, 9201), (55, 9423), (57, 9444), (65, 9483), (71, 9525), (84, 9606), (85, 9615), (98, 9702), (100, 9717), (107, 9756), (127, 9900), (135, 9951),

Gene: Emianna_35 Start: 22419, Stop: 23102, Start Num: 7

Candidate Starts for Emianna_35:

(Start: 7 @22419 has 183 MA's), (9, 22437), (27, 22530), (39, 22617), (40, 22620), (59, 22752), (75, 22851), (84, 22908), (94, 22977), (99, 23007), (102, 23028), (109, 23067),

Gene: Enceladus_13 Start: 8991, Stop: 9893, Start Num: 7

Candidate Starts for Enceladus_13:

(Start: 7 @8991 has 183 MA's), (17, 9057), (19, 9063), (36, 9147), (57, 9300), (60, 9312), (71, 9381), (79, 9420), (83, 9450), (85, 9471), (118, 9675), (123, 9714), (135, 9807), (137, 9831), (145, 9876),

Gene: Engineer_43 Start: 17859, Stop: 18524, Start Num: 7

Candidate Starts for Engineer_43:

(Start: 7 @17859 has 183 MA's), (22, 17949), (79, 18306), (100, 18459),

Gene: EniyanLRS_32 Start: 15588, Stop: 16499, Start Num: 7

Candidate Starts for EniyanLRS_32:

(Start: 7 @15588 has 183 MA's), (11, 15627), (17, 15654), (18, 15657), (20, 15669), (25, 15684), (57, 15897), (64, 15939), (68, 15963), (70, 15969), (89, 16098), (94, 16134), (110, 16233), (115, 16254), (124, 16308), (125, 16311), (135, 16398), (139, 16434), (142, 16461),

Gene: Ennea_41 Start: 23023, Stop: 23706, Start Num: 7

Candidate Starts for Ennea_41:

(Start: 7 @23023 has 183 MA's), (40, 23224), (59, 23356), (63, 23383), (75, 23455), (84, 23512), (94, 23581), (102, 23632), (109, 23671),

Gene: Estes_28 Start: 13531, Stop: 14430, Start Num: 7

Candidate Starts for Estes_28:

(Start: 7 @13531 has 183 MA's), (20, 13612), (31, 13663), (68, 13906), (78, 13960), (80, 13975), (84, 14008), (94, 14077), (110, 14176), (120, 14227), (124, 14251), (126, 14287), (129, 14299), (132, 14320), (135, 14344), (138, 14374), (144, 14407),

Gene: Faith1_13 Start: 9002, Stop: 9901, Start Num: 7

Candidate Starts for Faith1_13:

(Start: 7 @9002 has 183 MA's), (17, 9065), (21, 9086), (36, 9155), (55, 9287), (57, 9308), (71, 9389), (84, 9470), (85, 9479), (99, 9569), (100, 9581), (107, 9620), (118, 9683), (119, 9689), (128, 9770), (135, 9815), (145, 9884),

Gene: FarmResident_13 Start: 8717, Stop: 9619, Start Num: 7

Candidate Starts for FarmResident_13:

(Start: 7 @8717 has 183 MA's), (17, 8783), (55, 9005), (57, 9026), (71, 9107), (78, 9140), (79, 9146), (84, 9188), (85, 9197), (98, 9284), (100, 9299), (107, 9338), (112, 9365), (118, 9401), (119, 9407), (123, 9440), (126, 9479), (127, 9482), (135, 9533), (141, 9584),

Gene: Finemlucis_13 Start: 9002, Stop: 9901, Start Num: 7

Candidate Starts for Finemlucis_13:

(Start: 7 @9002 has 183 MA's), (17, 9065), (21, 9086), (36, 9155), (55, 9287), (57, 9308), (71, 9389), (84, 9470), (85, 9479), (99, 9569), (100, 9581), (107, 9620), (119, 9689), (135, 9815), (145, 9884),

Gene: Finnry_14 Start: 9120, Stop: 10022, Start Num: 7

Candidate Starts for Finnry_14:

(Start: 7 @9120 has 183 MA's), (17, 9186), (55, 9408), (57, 9429), (71, 9510), (84, 9591), (85, 9600), (98, 9687), (100, 9702), (107, 9741), (121, 9834), (127, 9885), (135, 9936),

Gene: Flapper_39 Start: 22775, Stop: 23458, Start Num: 7

Candidate Starts for Flapper_39:

(Start: 7 @22775 has 183 MA's), (40, 22976), (44, 23024), (59, 23108), (75, 23207), (81, 23246), (84, 23264), (94, 23333), (102, 23384), (109, 23423),

Gene: Float294_37 Start: 22462, Stop: 23145, Start Num: 7

Candidate Starts for Float294_37:

(Start: 7 @22462 has 183 MA's), (40, 22663), (59, 22795), (63, 22822), (75, 22894), (84, 22951), (94, 23020), (102, 23071), (109, 23110),

Gene: Foxboro_36 Start: 22925, Stop: 23608, Start Num: 7

Candidate Starts for Foxboro_36:

(Start: 7 @22925 has 183 MA's), (9, 22943), (27, 23036), (39, 23123), (40, 23126), (59, 23258), (75, 23357), (84, 23414), (94, 23483), (99, 23513), (102, 23534), (109, 23573),

Gene: FreakyGoo_23 Start: 12816, Stop: 13715, Start Num: 7

Candidate Starts for FreakyGoo_23:

(Start: 7 @12816 has 183 MA's), (20, 12897), (32, 12951), (34, 12957), (51, 13086), (57, 13125), (68, 13191), (78, 13245), (80, 13260), (84, 13293), (92, 13350), (94, 13362), (112, 13470), (120, 13512), (124, 13536), (129, 13584), (138, 13659), (144, 13692),

Gene: Fury_44 Start: 22072, Stop: 22755, Start Num: 7

Candidate Starts for Fury_44:

(Start: 7 @22072 has 183 MA's), (40, 22273), (50, 22354), (58, 22399), (59, 22405), (61, 22417), (75, 22504), (84, 22561), (94, 22630), (102, 22681), (107, 22711), (109, 22720),

Gene: GRU1_25 Start: 14660, Stop: 15343, Start Num: 7

Candidate Starts for GRU1_25:

(Start: 7 @14660 has 183 MA's), (40, 14861), (59, 14993), (75, 15092), (81, 15131), (84, 15149), (94, 15218), (102, 15269), (109, 15308),

Gene: GTE5_26 Start: 15663, Stop: 16346, Start Num: 7

Candidate Starts for GTE5_26:

(Start: 7 @15663 has 183 MA's), (40, 15864), (59, 15996), (75, 16095), (81, 16134), (84, 16152), (94, 16221), (102, 16272), (109, 16311),

Gene: GTE8_24 Start: 15678, Stop: 16361, Start Num: 7

Candidate Starts for GTE8_24:

(Start: 7 @15678 has 183 MA's), (9, 15696), (59, 16011), (63, 16038), (75, 16110), (84, 16167), (94, 16236), (99, 16266), (100, 16278), (102, 16287), (109, 16326),

Gene: Gabriela_13 Start: 9002, Stop: 9901, Start Num: 7

Candidate Starts for Gabriela_13:

(Start: 7 @9002 has 183 MA's), (17, 9065), (21, 9086), (36, 9155), (55, 9287), (57, 9308), (71, 9389), (84, 9470), (85, 9479), (99, 9569), (100, 9581), (107, 9620), (118, 9683), (119, 9689), (128, 9770), (135, 9815), (145, 9884),

Gene: Gardann_13 Start: 9002, Stop: 9901, Start Num: 7

Candidate Starts for Gardann_13:

(Start: 7 @9002 has 183 MA's), (17, 9065), (21, 9086), (36, 9155), (55, 9287), (57, 9308), (71, 9389), (84, 9470), (85, 9479), (99, 9569), (100, 9581), (107, 9620), (119, 9689), (135, 9815), (145, 9884),

Gene: GardenSalsa_27 Start: 13367, Stop: 14266, Start Num: 7

Candidate Starts for GardenSalsa_27:

(Start: 7 @13367 has 183 MA's), (20, 13448), (31, 13499), (66, 13724), (68, 13742), (78, 13796), (80, 13811), (84, 13844), (94, 13913), (100, 13955), (124, 14087), (126, 14123), (129, 14135), (133, 14162), (135, 14180), (138, 14210), (144, 14243),

Gene: Geeche_41 Start: 17733, Stop: 18398, Start Num: 7

Candidate Starts for Geeche_41:

(Start: 7 @17733 has 183 MA's), (22, 17823), (79, 18180), (100, 18333),

Gene: GenevaB15_27 Start: 13394, Stop: 14293, Start Num: 7

Candidate Starts for GenevaB15_27:

(Start: 7 @13394 has 183 MA's), (20, 13475), (31, 13526), (57, 13703), (68, 13769), (78, 13823), (80, 13838), (84, 13871), (94, 13940), (120, 14090), (124, 14114), (126, 14150), (129, 14162), (133, 14189), (135, 14207), (138, 14237), (144, 14270),

Gene: Glaske16_24 Start: 12815, Stop: 13714, Start Num: 7

Candidate Starts for Glaske16_24:

(Start: 7 @12815 has 183 MA's), (20, 12896), (32, 12950), (34, 12956), (51, 13085), (57, 13124), (68, 13190), (78, 13244), (80, 13259), (84, 13292), (92, 13349), (94, 13361), (112, 13469), (120, 13511), (124, 13535), (129, 13583), (138, 13658), (144, 13691),

Gene: GrootJr_37 Start: 21777, Stop: 22460, Start Num: 7

Candidate Starts for GrootJr_37:

(Start: 7 @21777 has 183 MA's), (9, 21795), (27, 21888), (39, 21975), (40, 21978), (59, 22110), (75, 22209), (84, 22266), (94, 22335), (99, 22365), (102, 22386), (109, 22425),

Gene: Gusanita_14 Start: 9128, Stop: 9796, Start Num: 7

Candidate Starts for Gusanita_14:

(Start: 7 @9128 has 183 MA's), (29, 9263), (43, 9350), (53, 9416), (72, 9536), (98, 9707), (100, 9722),

Gene: GuuelaD_13 Start: 9034, Stop: 9936, Start Num: 7

Candidate Starts for GuuelaD_13:

(Start: 7 @9034 has 183 MA's), (17, 9100), (36, 9190), (55, 9322), (57, 9343), (71, 9424), (84, 9505), (85, 9514), (99, 9604), (100, 9616), (107, 9655), (118, 9718), (119, 9724), (135, 9850), (145, 9919),

Gene: GuyFagieri_39 Start: 23053, Stop: 23721, Start Num: 7

Candidate Starts for GuyFagieri_39:

(Start: 7 @23053 has 183 MA's), (20, 23134), (22, 23143), (43, 23275), (59, 23377), (61, 23389), (75, 23476), (84, 23533), (94, 23602), (95, 23608), (97, 23620), (109, 23692),

Gene: Hafay_13 Start: 9035, Stop: 9934, Start Num: 7

Candidate Starts for Hafay_13:

(Start: 7 @9035 has 183 MA's), (17, 9098), (21, 9119), (36, 9188), (55, 9320), (57, 9341), (71, 9422), (84, 9503), (85, 9512), (99, 9602), (100, 9614), (107, 9653), (118, 9716), (119, 9722), (128, 9803), (135, 9848), (145, 9917),

Gene: Halena_13 Start: 8990, Stop: 9892, Start Num: 7

Candidate Starts for Halena_13:

(Start: 7 @8990 has 183 MA's), (17, 9056), (19, 9062), (36, 9146), (57, 9299), (60, 9311), (71, 9380), (79, 9419), (83, 9449), (85, 9470), (118, 9674), (123, 9713), (135, 9806), (137, 9830), (145, 9875),

Gene: Halloweekend_14 Start: 8878, Stop: 9546, Start Num: 7

Candidate Starts for Halloweekend_14:

(Start: 7 @8878 has 183 MA's), (43, 9100), (53, 9166), (72, 9286), (92, 9418), (100, 9472),

Gene: HubbaBubba_34 Start: 18243, Stop: 18923, Start Num: 7

Candidate Starts for HubbaBubba_34:

(Start: 7 @18243 has 183 MA's), (39, 18438), (50, 18522), (59, 18573), (63, 18600), (75, 18672), (84, 18729), (94, 18798), (102, 18849), (109, 18888),

Gene: IDyn_36 Start: 19639, Stop: 20319, Start Num: 7

Candidate Starts for IDyn_36:

(Start: 7 @19639 has 183 MA's), (39, 19834), (50, 19918), (59, 19969), (75, 20068), (84, 20125), (94, 20194), (102, 20245), (109, 20284),

Gene: IPhane7_23 Start: 12816, Stop: 13715, Start Num: 7

Candidate Starts for IPhane7_23:

(Start: 7 @12816 has 183 MA's), (20, 12897), (32, 12951), (34, 12957), (51, 13086), (57, 13125), (68, 13191), (78, 13245), (80, 13260), (84, 13293), (92, 13350), (94, 13362), (112, 13470), (120, 13512), (124, 13536), (129, 13584), (138, 13659), (144, 13692),

Gene: Ichiang_14 Start: 8893, Stop: 9561, Start Num: 7

Candidate Starts for Ichiang_14:

(Start: 7 @8893 has 183 MA's), (16, 8962), (43, 9115), (53, 9181), (72, 9301), (100, 9487),

Gene: IsHungry_16 Start: 9202, Stop: 9870, Start Num: 7

Candidate Starts for IsHungry_16:

(Start: 7 @9202 has 183 MA's), (29, 9337), (43, 9424), (53, 9490), (72, 9610), (98, 9781), (100, 9796),

Gene: Itos_13 Start: 9002, Stop: 9901, Start Num: 7

Candidate Starts for Itos_13:

(Start: 7 @9002 has 183 MA's), (17, 9065), (21, 9086), (36, 9155), (55, 9287), (57, 9308), (71, 9389), (84, 9470), (85, 9479), (99, 9569), (100, 9581), (107, 9620), (118, 9683), (119, 9689), (128, 9770), (135, 9815), (145, 9884),

Gene: Izel_22 Start: 12815, Stop: 13714, Start Num: 7

Candidate Starts for Izel_22:

(Start: 7 @12815 has 183 MA's), (20, 12896), (32, 12950), (34, 12956), (51, 13085), (57, 13124), (68, 13190), (78, 13244), (80, 13259), (84, 13292), (92, 13349), (94, 13361), (112, 13469), (120, 13511), (124, 13535), (129, 13583), (138, 13658), (144, 13691),

Gene: Jifall16_34 Start: 22046, Stop: 22729, Start Num: 7

Candidate Starts for Jifall16_34:

(Start: 7 @22046 has 183 MA's), (9, 22064), (27, 22157), (39, 22244), (40, 22247), (59, 22379), (75, 22478), (84, 22535), (94, 22604), (99, 22634), (102, 22655), (109, 22694),

Gene: Jobypre_14 Start: 9123, Stop: 10025, Start Num: 7

Candidate Starts for Jobypre_14:

(Start: 7 @9123 has 183 MA's), (17, 9189), (55, 9411), (57, 9432), (71, 9513), (84, 9594), (85, 9603), (98, 9690), (100, 9705), (107, 9744), (121, 9837), (127, 9888), (135, 9939),

Gene: JoeDirt_13 Start: 8990, Stop: 9892, Start Num: 7

Candidate Starts for JoeDirt_13:

(Start: 7 @8990 has 183 MA's), (17, 9056), (19, 9062), (36, 9146), (57, 9299), (60, 9311), (71, 9380), (79, 9419), (83, 9449), (85, 9470), (118, 9674), (123, 9713), (135, 9806), (137, 9830), (145, 9875),

Gene: JonJames_41 Start: 21700, Stop: 22365, Start Num: 7

Candidate Starts for JonJames_41:

(Start: 7 @21700 has 183 MA's), (24, 21793), (36, 21862), (63, 22051), (68, 22078), (97, 22267),

Gene: Jubie_14 Start: 9123, Stop: 10025, Start Num: 7

Candidate Starts for Jubie_14:

(Start: 7 @9123 has 183 MA's), (17, 9189), (55, 9411), (57, 9432), (71, 9513), (84, 9594), (85, 9603), (98, 9690), (100, 9705), (107, 9744), (121, 9837), (127, 9888), (135, 9939),

Gene: Julie_16 Start: 9465, Stop: 10133, Start Num: 7

Candidate Starts for Julie_16:

(Start: 7 @9465 has 183 MA's), (29, 9600), (43, 9687), (53, 9753), (72, 9873), (98, 10044),

Gene: Kabluna_38 Start: 21100, Stop: 21783, Start Num: 7

Candidate Starts for Kabluna_38:

(Start: 7 @21100 has 183 MA's), (40, 21301), (44, 21349), (59, 21433), (75, 21532), (84, 21589), (94, 21658), (109, 21748),

Gene: Kahlid_13 Start: 9002, Stop: 9901, Start Num: 7

Candidate Starts for Kahlid_13:

(Start: 7 @9002 has 183 MA's), (17, 9065), (21, 9086), (36, 9155), (55, 9287), (57, 9308), (71, 9389), (84, 9470), (85, 9479), (99, 9569), (100, 9581), (107, 9620), (119, 9689), (135, 9815), (145, 9884),

Gene: KidneyBean_35 Start: 22194, Stop: 22877, Start Num: 7

Candidate Starts for KidneyBean_35:

(Start: 7 @22194 has 183 MA's), (9, 22212), (27, 22305), (40, 22395), (59, 22527), (75, 22626), (84, 22683), (94, 22752), (99, 22782), (102, 22803), (109, 22842),

Gene: Kihatsu_17 Start: 9559, Stop: 10227, Start Num: 7

Candidate Starts for Kihatsu_17:

(Start: 7 @9559 has 183 MA's), (53, 9847), (72, 9967), (92, 10099), (100, 10153),

Gene: Kimchi1738_23 Start: 15559, Stop: 16221, Start Num: 7

Candidate Starts for Kimchi1738_23:

(Start: 7 @15559 has 183 MA's), (9, 15577), (20, 15640), (21, 15646), (59, 15880), (75, 15976), (84, 16033), (86, 16048), (109, 16192),

Gene: Kingsolomon_14 Start: 9123, Stop: 10025, Start Num: 7

Candidate Starts for Kingsolomon_14:

(Start: 7 @9123 has 183 MA's), (17, 9189), (55, 9411), (57, 9432), (71, 9513), (84, 9594), (85, 9603), (98, 9690), (100, 9705), (107, 9744), (121, 9837), (127, 9888), (135, 9939),

Gene: KirDoubleO7_12 Start: 9136, Stop: 10038, Start Num: 7

Candidate Starts for KirDoubleO7_12:

(Start: 7 @9136 has 183 MA's), (17, 9202), (55, 9424), (57, 9445), (65, 9484), (71, 9526), (84, 9607), (85, 9616), (98, 9703), (100, 9718), (107, 9757), (127, 9901), (135, 9952),

Gene: Kropertea_13 Start: 8689, Stop: 9591, Start Num: 7

Candidate Starts for Kropertea_13:

(Start: 7 @8689 has 183 MA's), (17, 8755), (55, 8977), (57, 8998), (71, 9079), (79, 9118), (84, 9160), (85, 9169), (98, 9256), (100, 9271), (107, 9310), (126, 9451), (127, 9454), (135, 9505), (141, 9556),

Gene: Krypton555_14 Start: 9112, Stop: 10011, Start Num: 7

Candidate Starts for Krypton555_14:

(Start: 7 @9112 has 183 MA's), (17, 9178), (55, 9400), (57, 9421), (71, 9502), (84, 9583), (85, 9592), (98, 9679), (100, 9694), (107, 9733), (118, 9796), (119, 9802), (126, 9874), (135, 9928), (145, 9997),

Gene: Kumao_22 Start: 12078, Stop: 12980, Start Num: 7

Candidate Starts for Kumao_22:

(Start: 7 @12078 has 183 MA's), (12, 12120), (20, 12159), (37, 12240), (39, 12261), (45, 12321), (51, 12348), (57, 12387), (66, 12438), (68, 12456), (77, 12507), (78, 12510), (79, 12516), (80, 12525), (84, 12558), (87, 12576), (94, 12627), (100, 12669), (125, 12804), (131, 12864), (135, 12891),

Gene: Kumotta_13 Start: 8849, Stop: 9499, Start Num: 7

Candidate Starts for Kumotta_13:

(Start: 7 @8849 has 183 MA's), (15, 8909), (19, 8921), (35, 8999), (48, 9107), (55, 9137), (58, 9161), (62, 9185), (63, 9194), (83, 9308), (109, 9473),

Gene: Kurt_35 Start: 22434, Stop: 23117, Start Num: 7

Candidate Starts for Kurt_35:

(Start: 7 @22434 has 183 MA's), (9, 22452), (27, 22545), (39, 22632), (40, 22635), (59, 22767), (75, 22866), (84, 22923), (94, 22992), (99, 23022), (102, 23043), (109, 23082),

Gene: LeBron_13 Start: 8990, Stop: 9892, Start Num: 7

Candidate Starts for LeBron_13:

(Start: 7 @8990 has 183 MA's), (17, 9056), (19, 9062), (36, 9146), (57, 9299), (60, 9311), (71, 9380), (79, 9419), (83, 9449), (85, 9470), (118, 9674), (123, 9713), (135, 9806), (137, 9830), (145, 9875),

Gene: Lenoxika_16 Start: 9239, Stop: 9907, Start Num: 7

Candidate Starts for Lenoxika_16:

(Start: 7 @9239 has 183 MA's), (16, 9308), (43, 9461), (53, 9527), (72, 9647), (92, 9779), (100, 9833),

Gene: Lewan_13 Start: 9002, Stop: 9901, Start Num: 7

Candidate Starts for Lewan_13:

(Start: 7 @9002 has 183 MA's), (17, 9065), (21, 9086), (36, 9155), (55, 9287), (57, 9308), (71, 9389), (84, 9470), (85, 9479), (99, 9569), (100, 9581), (107, 9620), (118, 9683), (119, 9689), (128, 9770), (135, 9815), (145, 9884),

Gene: LilDestine_13 Start: 9002, Stop: 9901, Start Num: 7

Candidate Starts for LilDestine_13:

(Start: 7 @9002 has 183 MA's), (17, 9065), (21, 9086), (36, 9155), (55, 9287), (57, 9308), (71, 9389), (84, 9470), (85, 9479), (99, 9569), (100, 9581), (107, 9620), (119, 9689), (135, 9815), (145, 9884),

Gene: LilhomieP_22 Start: 12816, Stop: 13715, Start Num: 7

Candidate Starts for LilhomieP_22:

(Start: 7 @12816 has 183 MA's), (20, 12897), (32, 12951), (34, 12957), (51, 13086), (57, 13125), (68, 13191), (78, 13245), (80, 13260), (84, 13293), (92, 13350), (94, 13362), (112, 13470), (120, 13512), (124, 13536), (129, 13584), (138, 13659), (144, 13692),

Gene: LiyuLake_14 Start: 9127, Stop: 10029, Start Num: 7

Candidate Starts for LiyuLake_14:

(Start: 7 @9127 has 183 MA's), (17, 9193), (55, 9415), (57, 9436), (65, 9475), (71, 9517), (84, 9598), (85, 9607), (98, 9694), (100, 9709), (107, 9748), (127, 9892), (135, 9943),

Gene: Loadrie_13 Start: 9035, Stop: 9934, Start Num: 7

Candidate Starts for Loadrie_13:

(Start: 7 @9035 has 183 MA's), (17, 9098), (21, 9119), (36, 9188), (55, 9320), (57, 9341), (71, 9422), (84, 9503), (85, 9512), (99, 9602), (100, 9614), (107, 9653), (118, 9716), (119, 9722), (128, 9803), (135, 9848), (137, 9872), (145, 9917),

Gene: Lollipop1437_40 Start: 23011, Stop: 23694, Start Num: 7

Candidate Starts for Lollipop1437_40:

(Start: 7 @23011 has 183 MA's), (40, 23212), (59, 23344), (63, 23371), (75, 23443), (84, 23500), (94, 23569), (102, 23620), (109, 23659),

Gene: Lolly9_14 Start: 9130, Stop: 10029, Start Num: 7

Candidate Starts for Lolly9_14:

(Start: 7 @9130 has 183 MA's), (17, 9196), (55, 9418), (57, 9439), (71, 9520), (84, 9601), (85, 9610), (100, 9712), (107, 9751), (118, 9814), (126, 9892), (127, 9895), (135, 9946), (137, 9970), (145, 10015),

Gene: Lozinak_42 Start: 17914, Stop: 18579, Start Num: 7

Candidate Starts for Lozinak_42:

(Start: 7 @17914 has 183 MA's), (22, 18004), (79, 18361), (100, 18514),

Gene: Lumos_14 Start: 9123, Stop: 10025, Start Num: 7

Candidate Starts for Lumos_14:

(Start: 7 @9123 has 183 MA's), (17, 9189), (55, 9411), (57, 9432), (71, 9513), (84, 9594), (85, 9603), (98, 9690), (100, 9705), (107, 9744), (121, 9837), (127, 9888), (135, 9939),

Gene: MAckerman_13 Start: 8989, Stop: 9891, Start Num: 7

Candidate Starts for MAckerman_13:

(Start: 7 @8989 has 183 MA's), (17, 9055), (19, 9061), (36, 9145), (57, 9298), (60, 9310), (71, 9379), (79, 9418), (83, 9448), (85, 9469), (118, 9673), (123, 9712), (135, 9805), (137, 9829), (145, 9874),

Gene: MacGully_43 Start: 23224, Stop: 23904, Start Num: 7

Candidate Starts for MacGully_43:

(Start: 7 @23224 has 183 MA's), (11, 23263), (20, 23305), (43, 23449), (59, 23551), (61, 23563), (63, 23578), (75, 23650), (84, 23707), (90, 23746), (94, 23776), (97, 23794), (98, 23803), (100, 23818), (109, 23866), (111, 23878),

Gene: Maja_12 Start: 8474, Stop: 9121, Start Num: 7

Candidate Starts for Maja_12:

(Start: 7 @8474 has 183 MA's), (8, 8477), (15, 8534), (20, 8555), (27, 8585), (36, 8630), (55, 8762), (58, 8786), (72, 8870), (109, 9098),

Gene: MargaretKali_13 Start: 8484, Stop: 9134, Start Num: 7

Candidate Starts for MargaretKali_13:

(Start: 7 @8484 has 183 MA's), (30, 8613), (32, 8619), (37, 8646), (52, 8760), (55, 8772), (58, 8796), (62, 8820), (63, 8829), (83, 8943), (92, 9012), (95, 9030), (104, 9093), (109, 9108),

Gene: Marietta_37 Start: 19554, Stop: 20234, Start Num: 7

Candidate Starts for Marietta_37:

(1, 19380), (Start: 7 @19554 has 183 MA's), (39, 19752), (59, 19887), (75, 19986), (81, 20025), (84, 20043), (93, 20103), (94, 20112), (102, 20163), (109, 20202), (111, 20214),

Gene: MaryV_35 Start: 15860, Stop: 16771, Start Num: 7

Candidate Starts for MaryV_35:

(Start: 7 @15860 has 183 MA's), (11, 15899), (17, 15926), (18, 15929), (20, 15941), (25, 15956), (57, 16169), (68, 16235), (70, 16241), (89, 16370), (94, 16406), (110, 16505), (115, 16526), (124, 16580),

(125, 16583), (131, 16643), (134, 16667), (135, 16670), (136, 16679), (139, 16706), (143, 16736), (144, 16748),

Gene: Maselop_39 Start: 23248, Stop: 23916, Start Num: 7

Candidate Starts for Maselop_39:

(Start: 7 @23248 has 183 MA's), (20, 23329), (29, 23386), (43, 23470), (59, 23572), (61, 23584), (75, 23671), (84, 23728), (94, 23797), (95, 23803), (97, 23815), (108, 23881), (109, 23887),

Gene: MerCougar_36 Start: 22307, Stop: 22990, Start Num: 7

Candidate Starts for MerCougar_36:

(Start: 7 @22307 has 183 MA's), (40, 22508), (59, 22640), (75, 22739), (78, 22748), (84, 22796), (94, 22865), (109, 22955),

Gene: Miley16_13 Start: 9002, Stop: 9901, Start Num: 7

Candidate Starts for Miley16_13:

(Start: 7 @9002 has 183 MA's), (17, 9065), (21, 9086), (36, 9155), (55, 9287), (57, 9308), (71, 9389), (84, 9470), (85, 9479), (99, 9569), (100, 9581), (107, 9620), (118, 9683), (119, 9689), (128, 9770), (135, 9815), (145, 9884),

Gene: MiniLon_14 Start: 9130, Stop: 10029, Start Num: 7

Candidate Starts for MiniLon_14:

(Start: 7 @9130 has 183 MA's), (17, 9196), (55, 9418), (57, 9439), (71, 9520), (84, 9601), (85, 9610), (100, 9712), (107, 9751), (118, 9814), (126, 9892), (127, 9895), (135, 9946), (137, 9970), (145, 10015),

Gene: MiniMac_14 Start: 9131, Stop: 10030, Start Num: 7

Candidate Starts for MiniMac_14:

(Start: 7 @9131 has 183 MA's), (17, 9197), (55, 9419), (57, 9440), (71, 9521), (84, 9602), (85, 9611), (100, 9713), (107, 9752), (118, 9815), (126, 9893), (127, 9896), (135, 9947), (137, 9971), (145, 10016),

Gene: Miskis_44 Start: 17677, Stop: 18342, Start Num: 7

Candidate Starts for Miskis_44:

(Start: 7 @17677 has 183 MA's), (22, 17767), (79, 18124),

Gene: MkaliMitinis3_13 Start: 9002, Stop: 9901, Start Num: 7

Candidate Starts for MkaliMitinis3_13:

(Start: 7 @9002 has 183 MA's), (17, 9065), (21, 9086), (36, 9155), (55, 9287), (57, 9308), (71, 9389), (84, 9470), (85, 9479), (99, 9569), (100, 9581), (107, 9620), (118, 9683), (119, 9689), (128, 9770), (135, 9815), (145, 9884),

Gene: ModicumRichard_13 Start: 8905, Stop: 9573, Start Num: 6

Candidate Starts for ModicumRichard_13:

(Start: 6 @8905 has 5 MA's), (71, 9307), (84, 9388), (92, 9445), (104, 9526), (109, 9547),

Gene: Mollymur_25 Start: 16148, Stop: 16804, Start Num: 7

Candidate Starts for Mollymur_25:

(Start: 7 @16148 has 183 MA's), (14, 16202), (17, 16214), (38, 16313), (68, 16520), (73, 16550), (74, 16553),

Gene: Moostard_14 Start: 9119, Stop: 10021, Start Num: 7

Candidate Starts for Moostard_14:

(Start: 7 @9119 has 183 MA's), (17, 9185), (55, 9407), (57, 9428), (71, 9509), (84, 9590), (85, 9599), (98, 9686), (100, 9701), (107, 9740), (121, 9833), (127, 9884), (135, 9935),

Gene: Morgana_13 Start: 8909, Stop: 9580, Start Num: 6

Candidate Starts for Morgana_13:

(Start: 6 @8909 has 5 MA's), (71, 9311), (84, 9392), (92, 9449), (104, 9530), (109, 9551),

Gene: MrMagoo_27 Start: 13367, Stop: 14266, Start Num: 7

Candidate Starts for MrMagoo_27:

(Start: 7 @13367 has 183 MA's), (20, 13448), (31, 13499), (66, 13724), (68, 13742), (78, 13796), (80, 13811), (84, 13844), (94, 13913), (100, 13955), (124, 14087), (126, 14123), (129, 14135), (133, 14162), (135, 14180), (138, 14210), (144, 14243),

Gene: MrSmee_12 Start: 7019, Stop: 7681, Start Num: 7

Candidate Starts for MrSmee_12:

(Start: 7 @7019 has 183 MA's), (16, 7088), (20, 7106), (21, 7112), (43, 7241), (52, 7301), (57, 7337), (63, 7373), (67, 7385), (72, 7424), (85, 7508),

Gene: MsGreen_14 Start: 9123, Stop: 10025, Start Num: 7

Candidate Starts for MsGreen_14:

(Start: 7 @9123 has 183 MA's), (17, 9189), (55, 9411), (57, 9432), (71, 9513), (84, 9594), (85, 9603), (98, 9690), (100, 9705), (107, 9744), (121, 9837), (127, 9888), (135, 9939),

Gene: NadineRae_35 Start: 18802, Stop: 19482, Start Num: 7

Candidate Starts for NadineRae_35:

(Start: 7 @18802 has 183 MA's), (39, 18997), (50, 19081), (59, 19132), (75, 19231), (84, 19288), (94, 19357), (102, 19408), (109, 19447),

Gene: Nandita_16 Start: 9237, Stop: 9905, Start Num: 7

Candidate Starts for Nandita_16:

(Start: 7 @9237 has 183 MA's), (16, 9306), (43, 9459), (53, 9525), (72, 9645), (92, 9777), (100, 9831),

Gene: Nanosmite_27 Start: 13585, Stop: 14487, Start Num: 7

Candidate Starts for Nanosmite_27:

(Start: 7 @13585 has 183 MA's), (20, 13666), (25, 13681), (51, 13855), (57, 13894), (68, 13960), (78, 14014), (80, 14029), (84, 14062), (92, 14119), (94, 14131), (124, 14311), (129, 14359), (131, 14377), (134, 14398), (135, 14401), (136, 14410), (138, 14431), (139, 14437),

Gene: NatB6_35 Start: 21443, Stop: 22126, Start Num: 7

Candidate Starts for NatB6_35:

(Start: 7 @21443 has 183 MA's), (9, 21461), (27, 21554), (39, 21641), (40, 21644), (59, 21776), (75, 21875), (84, 21932), (94, 22001), (99, 22031), (102, 22052), (109, 22091),

Gene: Netyap_13 Start: 9002, Stop: 9901, Start Num: 7

Candidate Starts for Netyap_13:

(Start: 7 @9002 has 183 MA's), (17, 9065), (21, 9086), (36, 9155), (55, 9287), (57, 9308), (71, 9389), (84, 9470), (85, 9479), (99, 9569), (100, 9581), (107, 9620), (118, 9683), (119, 9689), (128, 9770), (135, 9815), (145, 9884),

Gene: Nicholas_14 Start: 9123, Stop: 10025, Start Num: 7

Candidate Starts for Nicholas_14:

(Start: 7 @9123 has 183 MA's), (17, 9189), (55, 9411), (57, 9432), (71, 9513), (84, 9594), (85, 9603), (98, 9690), (100, 9705), (107, 9744), (121, 9837), (127, 9888), (135, 9939),

Gene: Nicholasp3_13 Start: 9002, Stop: 9901, Start Num: 7

Candidate Starts for Nicholasp3_13:

(Start: 7 @9002 has 183 MA's), (17, 9065), (21, 9086), (36, 9155), (55, 9287), (57, 9308), (71, 9389), (84, 9470), (85, 9479), (99, 9569), (100, 9581), (107, 9620), (119, 9689), (135, 9815), (145, 9884),

Gene: NoSwimming_14 Start: 10095, Stop: 10754, Start Num: 7

Candidate Starts for NoSwimming_14:

(Start: 7 @10095 has 183 MA's), (8, 10098), (15, 10155), (37, 10260), (55, 10386), (58, 10410), (59, 10416), (106, 10716), (109, 10722), (113, 10740),

Gene: Norvs_43 Start: 17916, Stop: 18581, Start Num: 7

Candidate Starts for Norvs_43:

(Start: 7 @17916 has 183 MA's), (22, 18006), (79, 18363), (100, 18516),

Gene: NosilaM_38 Start: 21997, Stop: 22680, Start Num: 7

Candidate Starts for NosilaM_38:

(Start: 7 @21997 has 183 MA's), (40, 22198), (44, 22246), (59, 22330), (75, 22429), (84, 22486), (94, 22555), (109, 22645),

Gene: NovumRegina_35 Start: 21776, Stop: 22459, Start Num: 7

Candidate Starts for NovumRegina_35:

(Start: 7 @21776 has 183 MA's), (9, 21794), (27, 21887), (39, 21974), (40, 21977), (59, 22109), (75, 22208), (84, 22265), (94, 22334), (99, 22364), (102, 22385), (109, 22424),

Gene: ObLaDi_13 Start: 8905, Stop: 9573, Start Num: 6

Candidate Starts for ObLaDi_13:

(Start: 6 @8905 has 5 MA's), (71, 9307), (84, 9388), (92, 9445), (104, 9526), (109, 9547),

Gene: OhShagHennessy_13 Start: 8963, Stop: 9865, Start Num: 7

Candidate Starts for OhShagHennessy_13:

(Start: 7 @8963 has 183 MA's), (17, 9029), (19, 9035), (36, 9119), (57, 9272), (60, 9284), (71, 9353), (77, 9383), (79, 9392), (83, 9422), (85, 9443), (118, 9647), (123, 9686), (135, 9779), (137, 9803), (145, 9848),

Gene: OneUp_36 Start: 15613, Stop: 16278, Start Num: 7

Candidate Starts for OneUp_36:

(4, 15595), (Start: 7 @15613 has 183 MA's), (43, 15844), (52, 15904), (54, 15913), (73, 16030),

Gene: Outis_36 Start: 22001, Stop: 22684, Start Num: 7

Candidate Starts for Outis_36:

(Start: 7 @22001 has 183 MA's), (40, 22202), (59, 22334), (75, 22433), (78, 22442), (84, 22490), (94, 22559), (109, 22649),

Gene: P1201_38 Start: 22813, Stop: 23490, Start Num: 7

Candidate Starts for P1201_38:

(Start: 7 @22813 has 183 MA's), (26, 22921), (29, 22942), (39, 22999), (46, 23065), (54, 23101), (69, 23188), (84, 23287), (94, 23356), (109, 23446),

Gene: PYPDinur_13 Start: 8672, Stop: 9574, Start Num: 7

Candidate Starts for PYPDinur_13:

(Start: 7 @8672 has 183 MA's), (17, 8738), (55, 8960), (57, 8981), (71, 9062), (79, 9101), (84, 9143), (85, 9152), (98, 9239), (100, 9254), (107, 9293), (112, 9320), (118, 9356), (119, 9362), (123, 9395), (126, 9434), (127, 9437), (135, 9488), (141, 9539),

Gene: Patio_38 Start: 22247, Stop: 22930, Start Num: 7

Candidate Starts for Patio_38:

(Start: 7 @22247 has 183 MA's), (40, 22448), (59, 22580), (63, 22607), (75, 22679), (84, 22736), (94, 22805), (102, 22856), (109, 22895),

Gene: PegLeg_23 Start: 12815, Stop: 13714, Start Num: 7

Candidate Starts for PegLeg_23:

(Start: 7 @12815 has 183 MA's), (20, 12896), (32, 12950), (34, 12956), (51, 13085), (57, 13124), (68, 13190), (78, 13244), (80, 13259), (84, 13292), (92, 13349), (94, 13361), (112, 13469), (120, 13511), (124, 13535), (129, 13583), (138, 13658), (144, 13691),

Gene: PeteyPab_22 Start: 15926, Stop: 16588, Start Num: 7

Candidate Starts for PeteyPab_22:

(Start: 7 @15926 has 183 MA's), (9, 15944), (20, 16007), (21, 16013), (59, 16247), (75, 16343), (84, 16400), (86, 16415), (109, 16559),

Gene: PhinkBoden_42 Start: 18297, Stop: 18962, Start Num: 7

Candidate Starts for PhinkBoden_42:

(Start: 7 @18297 has 183 MA's), (22, 18387), (79, 18744), (100, 18897),

Gene: Phomeo_34 Start: 22069, Stop: 22752, Start Num: 7

Candidate Starts for Phomeo_34:

(Start: 7 @22069 has 183 MA's), (9, 22087), (27, 22180), (39, 22267), (40, 22270), (59, 22402), (75, 22501), (84, 22558), (94, 22627), (99, 22657), (102, 22678), (109, 22717),

Gene: Pleakley_44 Start: 22073, Stop: 22756, Start Num: 7

Candidate Starts for Pleakley_44:

(Start: 7 @22073 has 183 MA's), (40, 22274), (50, 22355), (58, 22400), (59, 22406), (61, 22418), (75, 22505), (84, 22562), (94, 22631), (102, 22682), (107, 22712), (109, 22721),

Gene: Polyuki_39 Start: 23240, Stop: 23908, Start Num: 7

Candidate Starts for Polyuki_39:

(Start: 7 @23240 has 183 MA's), (20, 23321), (29, 23378), (43, 23462), (59, 23564), (61, 23576), (75, 23663), (84, 23720), (94, 23789), (95, 23795), (97, 23807), (108, 23873), (109, 23879),

Gene: Pochiewood_13 Start: 8989, Stop: 9891, Start Num: 7

Candidate Starts for Pochiewood_13:

(Start: 7 @8989 has 183 MA's), (17, 9055), (19, 9061), (36, 9145), (57, 9298), (60, 9310), (71, 9379), (79, 9418), (83, 9448), (85, 9469), (118, 9673), (123, 9712), (135, 9805), (137, 9829), (145, 9874),

Gene: Popper_14 Start: 8768, Stop: 9433, Start Num: 7

Candidate Starts for Popper_14:

(Start: 7 @8768 has 183 MA's), (43, 8990), (49, 9038), (52, 9050), (53, 9056), (57, 9086), (72, 9176), (83, 9239), (86, 9266), (100, 9362),

Gene: PotatoChip_23 Start: 15928, Stop: 16590, Start Num: 7

Candidate Starts for PotatoChip_23:

(Start: 7 @15928 has 183 MA's), (9, 15946), (20, 16009), (21, 16015), (59, 16249), (75, 16345), (84, 16402), (86, 16417), (109, 16561),

Gene: Quby_13 Start: 8671, Stop: 9573, Start Num: 7

Candidate Starts for Quby_13:

(Start: 7 @8671 has 183 MA's), (17, 8737), (55, 8959), (57, 8980), (71, 9061), (79, 9100), (84, 9142), (85, 9151), (98, 9238), (100, 9253), (107, 9292), (112, 9319), (118, 9355), (119, 9361), (123, 9394),

(126, 9433), (127, 9436), (135, 9487), (141, 9538),

Gene: QuinnAvery_16 Start: 9252, Stop: 9920, Start Num: 7

Candidate Starts for QuinnAvery_16:

(Start: 7 @9252 has 183 MA's), (53, 9540), (72, 9660), (92, 9792), (100, 9846),

Gene: Raqqa_13 Start: 8165, Stop: 8830, Start Num: 7

Candidate Starts for Raqqa_13:

(Start: 7 @8165 has 183 MA's), (18, 8240), (21, 8258), (29, 8300), (41, 8372), (43, 8387), (53, 8453), (56, 8462), (57, 8483), (77, 8597), (85, 8657),

Gene: RedRaider_42 Start: 24251, Stop: 24934, Start Num: 7

Candidate Starts for RedRaider_42:

(Start: 7 @24251 has 183 MA's), (40, 24452), (59, 24584), (63, 24611), (75, 24683), (84, 24740), (94, 24809), (102, 24860), (109, 24899),

Gene: Reindeer_21 Start: 12668, Stop: 13567, Start Num: 7

Candidate Starts for Reindeer_21:

(Start: 7 @12668 has 183 MA's), (28, 12785), (31, 12800), (34, 12809), (51, 12938), (57, 12977), (68, 13043), (78, 13097), (80, 13112), (84, 13145), (94, 13214), (120, 13364), (124, 13388), (129, 13436), (138, 13511),

Gene: Rey_27 Start: 13596, Stop: 14495, Start Num: 7

Candidate Starts for Rey_27:

(Start: 7 @13596 has 183 MA's), (31, 13728), (51, 13866), (57, 13905), (68, 13971), (78, 14025), (80, 14040), (84, 14073), (94, 14142), (110, 14241), (123, 14313), (124, 14316), (126, 14352), (129, 14364), (133, 14391), (135, 14409), (138, 14439), (144, 14472),

Gene: Rose5_13 Start: 8989, Stop: 9891, Start Num: 7

Candidate Starts for Rose5_13:

(Start: 7 @8989 has 183 MA's), (17, 9055), (19, 9061), (36, 9145), (57, 9298), (60, 9310), (71, 9379), (79, 9418), (83, 9448), (85, 9469), (118, 9673), (123, 9712), (135, 9805), (137, 9829), (145, 9874),

Gene: Rumpelstiltskin_13 Start: 9002, Stop: 9901, Start Num: 7

Candidate Starts for Rumpelstiltskin_13:

(Start: 7 @9002 has 183 MA's), (17, 9065), (21, 9086), (36, 9155), (55, 9287), (57, 9308), (71, 9389), (84, 9470), (85, 9479), (99, 9569), (100, 9581), (107, 9620), (118, 9683), (119, 9689), (128, 9770), (135, 9815), (145, 9884),

Gene: Ryan_16 Start: 9383, Stop: 10051, Start Num: 7

Candidate Starts for Ryan_16:

(Start: 7 @9383 has 183 MA's), (43, 9605), (53, 9671), (72, 9791), (92, 9923), (100, 9977),

Gene: Samty_14 Start: 9119, Stop: 10021, Start Num: 7

Candidate Starts for Samty_14:

(Start: 7 @9119 has 183 MA's), (17, 9185), (55, 9407), (57, 9428), (71, 9509), (84, 9590), (85, 9599), (98, 9686), (100, 9701), (107, 9740), (121, 9833), (127, 9884), (135, 9935),

Gene: Sarshaun_13 Start: 9035, Stop: 9934, Start Num: 7

Candidate Starts for Sarshaun_13:

(Start: 7 @9035 has 183 MA's), (17, 9098), (21, 9119), (36, 9188), (55, 9320), (57, 9341), (71, 9422), (84, 9503), (85, 9512), (99, 9602), (100, 9614), (107, 9653), (118, 9716), (119, 9722), (128, 9803), (135, 9848), (145, 9917),

Gene: Scotia_14 Start: 10101, Stop: 10754, Start Num: 7

Candidate Starts for Scotia_14:

(Start: 7 @10101 has 183 MA's), (8, 10104), (15, 10161), (37, 10266), (55, 10392), (58, 10416), (59, 10422), (109, 10728),

Gene: Scuba_44 Start: 22163, Stop: 22846, Start Num: 7

Candidate Starts for Scuba_44:

(Start: 7 @22163 has 183 MA's), (40, 22364), (50, 22445), (58, 22490), (59, 22496), (61, 22508), (75, 22595), (84, 22652), (94, 22721), (102, 22772), (107, 22802), (109, 22811),

Gene: Sheng711_13 Start: 8672, Stop: 9574, Start Num: 7

Candidate Starts for Sheng711_13:

(Start: 7 @8672 has 183 MA's), (17, 8738), (55, 8960), (57, 8981), (71, 9062), (79, 9101), (84, 9143), (85, 9152), (98, 9239), (100, 9254), (107, 9293), (112, 9320), (118, 9356), (119, 9362), (123, 9395), (126, 9434), (127, 9437), (135, 9488), (141, 9539),

Gene: Silverleaf_13 Start: 8989, Stop: 9891, Start Num: 7

Candidate Starts for Silverleaf_13:

(Start: 7 @8989 has 183 MA's), (17, 9055), (19, 9061), (36, 9145), (57, 9298), (60, 9310), (71, 9379), (79, 9418), (83, 9448), (85, 9469), (118, 9673), (123, 9712), (135, 9805), (137, 9829), (145, 9874),

Gene: Skinny_24 Start: 12816, Stop: 13715, Start Num: 7

Candidate Starts for Skinny_24:

(Start: 7 @12816 has 183 MA's), (20, 12897), (32, 12951), (34, 12957), (51, 13086), (57, 13125), (68, 13191), (78, 13245), (80, 13260), (84, 13293), (92, 13350), (94, 13362), (112, 13470), (120, 13512), (124, 13536), (129, 13584), (138, 13659), (144, 13692),

Gene: Skitty_13 Start: 7019, Stop: 7681, Start Num: 7

Candidate Starts for Skitty_13:

(Start: 7 @7019 has 183 MA's), (16, 7088), (20, 7106), (21, 7112), (43, 7241), (52, 7301), (57, 7337), (63, 7373), (67, 7385), (72, 7424), (85, 7508),

Gene: Skysand_37 Start: 22464, Stop: 23147, Start Num: 7

Candidate Starts for Skysand_37:

(Start: 7 @22464 has 183 MA's), (40, 22665), (59, 22797), (63, 22824), (75, 22896), (84, 22953), (94, 23022), (102, 23073), (109, 23112),

Gene: SlimJimmy_22 Start: 12815, Stop: 13714, Start Num: 7

Candidate Starts for SlimJimmy_22:

(Start: 7 @12815 has 183 MA's), (20, 12896), (32, 12950), (34, 12956), (51, 13085), (57, 13124), (68, 13190), (78, 13244), (80, 13259), (84, 13292), (92, 13349), (94, 13361), (120, 13511), (124, 13535), (129, 13583), (138, 13658), (139, 13664), (144, 13691),

Gene: Smoothie_43 Start: 17914, Stop: 18579, Start Num: 7

Candidate Starts for Smoothie_43:

(Start: 7 @17914 has 183 MA's), (22, 18004), (79, 18361), (100, 18514),

Gene: Snenia_14 Start: 9124, Stop: 10026, Start Num: 7

Candidate Starts for Snenia_14:

(Start: 7 @9124 has 183 MA's), (17, 9190), (55, 9412), (57, 9433), (71, 9514), (84, 9595), (85, 9604), (98, 9691), (100, 9706), (107, 9745), (121, 9838), (127, 9889), (135, 9940),

Gene: Soap141_13 Start: 9035, Stop: 9934, Start Num: 7

Candidate Starts for Soap141_13:

(Start: 7 @9035 has 183 MA's), (17, 9098), (21, 9119), (36, 9188), (55, 9320), (57, 9341), (71, 9422), (84, 9503), (85, 9512), (99, 9602), (100, 9614), (107, 9653), (118, 9716), (119, 9722), (128, 9803), (135, 9848), (145, 9917),

Gene: SpeedDemon_250 Start: 15649, Stop: 16305, Start Num: 7

Candidate Starts for SpeedDemon_250:

(2, 15592), (Start: 7 @15649 has 183 MA's), (13, 15700), (17, 15715), (63, 15994),

Gene: StarStruck_36 Start: 22001, Stop: 22684, Start Num: 7

Candidate Starts for StarStruck_36:

(Start: 7 @22001 has 183 MA's), (40, 22202), (59, 22334), (75, 22433), (78, 22442), (84, 22490), (94, 22559), (109, 22649),

Gene: Stickynote_25 Start: 16738, Stop: 17400, Start Num: 7

Candidate Starts for Stickynote_25:

(Start: 7 @16738 has 183 MA's), (9, 16756), (20, 16819), (21, 16825), (59, 17059), (75, 17155), (84, 17212), (86, 17227), (109, 17371),

Gene: Sukkupi_37 Start: 21116, Stop: 21796, Start Num: 7

Candidate Starts for Sukkupi_37:

(Start: 7 @21116 has 183 MA's), (39, 21311), (50, 21395), (59, 21446), (75, 21545), (84, 21602), (94, 21671), (102, 21722), (109, 21761),

Gene: SuperSulley_36 Start: 22185, Stop: 22868, Start Num: 7

Candidate Starts for SuperSulley_36:

(Start: 7 @22185 has 183 MA's), (40, 22386), (59, 22518), (75, 22617), (78, 22626), (84, 22674), (94, 22743), (109, 22833),

Gene: Toniann_42 Start: 17859, Stop: 18524, Start Num: 7

Candidate Starts for Toniann_42:

(Start: 7 @17859 has 183 MA's), (22, 17949), (79, 18306), (100, 18459),

Gene: Tourach_13 Start: 9015, Stop: 9917, Start Num: 7

Candidate Starts for Tourach_13:

(Start: 7 @9015 has 183 MA's), (17, 9081), (36, 9171), (55, 9303), (57, 9324), (71, 9405), (79, 9444), (83, 9474), (84, 9486), (85, 9495), (99, 9585), (100, 9597), (107, 9636), (118, 9699), (135, 9831), (145, 9900),

Gene: Towmatter_23 Start: 13548, Stop: 14204, Start Num: 7

Candidate Starts for Towmatter_23:

(2, 13491), (Start: 7 @13548 has 183 MA's), (10, 13569), (13, 13599), (52, 13824), (70, 13926), (88, 14046), (100, 14133), (101, 14136), (102, 14142),

Gene: Tracker_35 Start: 21197, Stop: 21880, Start Num: 7

Candidate Starts for Tracker_35:

(Start: 7 @21197 has 183 MA's), (9, 21215), (27, 21308), (39, 21395), (40, 21398), (59, 21530), (75, 21629), (84, 21686), (94, 21755), (99, 21785), (102, 21806), (109, 21845),

Gene: TriFive_14 Start: 9123, Stop: 10025, Start Num: 7

Candidate Starts for TriFive_14:

(Start: 7 @9123 has 183 MA's), (17, 9189), (55, 9411), (57, 9432), (71, 9513), (84, 9594), (85, 9603), (98, 9690), (100, 9705), (107, 9744), (121, 9837), (127, 9888), (135, 9939),

Gene: Turuncu_39 Start: 22468, Stop: 23151, Start Num: 7

Candidate Starts for Turuncu_39:

(Start: 7 @22468 has 183 MA's), (40, 22669), (59, 22801), (75, 22900), (81, 22939), (84, 22957), (94, 23026), (102, 23077), (109, 23116),

Gene: TyDawg_23 Start: 12816, Stop: 13715, Start Num: 7

Candidate Starts for TyDawg_23:

(Start: 7 @12816 has 183 MA's), (20, 12897), (32, 12951), (34, 12957), (51, 13086), (57, 13125), (68, 13191), (78, 13245), (80, 13260), (84, 13293), (92, 13350), (94, 13362), (112, 13470), (120, 13512), (124, 13536), (129, 13584), (138, 13659), (144, 13692),

Gene: Tyson_13 Start: 8989, Stop: 9891, Start Num: 7

Candidate Starts for Tyson_13:

(Start: 7 @8989 has 183 MA's), (17, 9055), (19, 9061), (36, 9145), (57, 9298), (60, 9310), (71, 9379), (79, 9418), (83, 9448), (85, 9469), (118, 9673), (123, 9712), (135, 9805), (137, 9829), (145, 9874),

Gene: UPIE_13 Start: 8987, Stop: 9889, Start Num: 7

Candidate Starts for UPIE_13:

(Start: 7 @8987 has 183 MA's), (17, 9053), (19, 9059), (36, 9143), (57, 9296), (60, 9308), (71, 9377), (79, 9416), (83, 9446), (85, 9467), (118, 9671), (123, 9710), (135, 9803), (137, 9827), (145, 9872),

Gene: Underpass_13 Start: 9002, Stop: 9901, Start Num: 7

Candidate Starts for Underpass_13:

(Start: 7 @9002 has 183 MA's), (17, 9065), (21, 9086), (36, 9155), (55, 9287), (57, 9308), (71, 9389), (84, 9470), (85, 9479), (99, 9569), (100, 9581), (107, 9620), (119, 9689), (135, 9815), (145, 9884),

Gene: VanLee_14 Start: 8706, Stop: 9605, Start Num: 6

Candidate Starts for VanLee_14:

(Start: 6 @8706 has 5 MA's), (23, 8796), (29, 8841), (31, 8850), (84, 9183), (112, 9357), (128, 9480), (140, 9573),

Gene: Vetrix_13 Start: 9002, Stop: 9901, Start Num: 7

Candidate Starts for Vetrix_13:

(Start: 7 @9002 has 183 MA's), (17, 9065), (21, 9086), (36, 9155), (55, 9287), (57, 9308), (71, 9389), (84, 9470), (85, 9479), (99, 9569), (100, 9581), (107, 9620), (118, 9683), (119, 9689), (128, 9770), (135, 9815), (145, 9884),

Gene: Wamburgrxpress_13 Start: 8989, Stop: 9891, Start Num: 7

Candidate Starts for Wamburgrxpress_13:

(Start: 7 @8989 has 183 MA's), (17, 9055), (19, 9061), (36, 9145), (57, 9298), (60, 9310), (71, 9379), (79, 9418), (83, 9448), (85, 9469), (118, 9673), (123, 9712), (135, 9805), (137, 9829), (145, 9874),

Gene: Wheezy_35 Start: 21402, Stop: 22085, Start Num: 7

Candidate Starts for Wheezy_35:

(Start: 7 @21402 has 183 MA's), (9, 21420), (27, 21513), (39, 21600), (40, 21603), (59, 21735), (75, 21834), (84, 21891), (94, 21960), (99, 21990), (102, 22011), (109, 22050),

Gene: Whirlwind_15 Start: 9117, Stop: 10016, Start Num: 7

Candidate Starts for Whirlwind_15:

(Start: 7 @9117 has 183 MA's), (17, 9183), (55, 9405), (57, 9426), (71, 9507), (84, 9588), (85, 9597), (100, 9699), (107, 9738), (118, 9801), (135, 9933), (145, 10002),

Gene: WhoseManz_37 Start: 19168, Stop: 19848, Start Num: 7

Candidate Starts for WhoseManz_37:

(Start: 7 @19168 has 183 MA's), (39, 19363), (50, 19447), (59, 19498), (63, 19525), (75, 19597), (84, 19654), (94, 19723), (102, 19774), (109, 19813),

Gene: Wigglewigggle_13 Start: 9035, Stop: 9934, Start Num: 7

Candidate Starts for Wigglewigggle_13:

(Start: 7 @9035 has 183 MA's), (17, 9098), (21, 9119), (36, 9188), (55, 9320), (57, 9341), (71, 9422), (84, 9503), (85, 9512), (99, 9602), (100, 9614), (107, 9653), (118, 9716), (119, 9722), (128, 9803), (135, 9848), (137, 9872), (145, 9917),

Gene: Wildcat_35 Start: 15870, Stop: 16781, Start Num: 7

Candidate Starts for Wildcat_35:

(Start: 7 @15870 has 183 MA's), (11, 15909), (17, 15936), (18, 15939), (20, 15951), (25, 15966), (57, 16179), (68, 16245), (70, 16251), (89, 16380), (94, 16416), (110, 16515), (115, 16536), (124, 16590), (125, 16593), (131, 16653), (134, 16677), (135, 16680), (136, 16689), (139, 16716), (143, 16746), (144, 16758),

Gene: Wilder_13 Start: 9002, Stop: 9901, Start Num: 7

Candidate Starts for Wilder_13:

(Start: 7 @9002 has 183 MA's), (17, 9065), (21, 9086), (36, 9155), (55, 9287), (57, 9308), (71, 9389), (84, 9470), (85, 9479), (99, 9569), (100, 9581), (107, 9620), (119, 9689), (135, 9815), (145, 9884),

Gene: WilliamBoone_42 Start: 17223, Stop: 17888, Start Num: 7

Candidate Starts for WilliamBoone_42:

(Start: 7 @17223 has 183 MA's), (54, 17523), (63, 17583), (79, 17670),

Gene: Winky_13 Start: 9002, Stop: 9901, Start Num: 7

Candidate Starts for Winky_13:

(Start: 7 @9002 has 183 MA's), (17, 9065), (21, 9086), (36, 9155), (55, 9287), (57, 9308), (71, 9389), (84, 9470), (85, 9479), (99, 9569), (100, 9581), (107, 9620), (118, 9683), (119, 9689), (128, 9770), (135, 9815), (145, 9884),

Gene: Wyatt2_13 Start: 8989, Stop: 9891, Start Num: 7

Candidate Starts for Wyatt2_13:

(Start: 7 @8989 has 183 MA's), (17, 9055), (19, 9061), (36, 9145), (57, 9298), (60, 9310), (71, 9379), (79, 9418), (83, 9448), (85, 9469), (118, 9673), (123, 9712), (135, 9805), (137, 9829), (145, 9874),

Gene: Yndexa_37 Start: 21116, Stop: 21796, Start Num: 7

Candidate Starts for Yndexa_37:

(Start: 7 @21116 has 183 MA's), (39, 21311), (50, 21395), (59, 21446), (75, 21545), (84, 21602), (94, 21671), (102, 21722), (109, 21761),

Gene: Yvonnetastic_39 Start: 19249, Stop: 19914, Start Num: 7

Candidate Starts for Yvonnetastic_39:

(Start: 7 @19249 has 183 MA's), (24, 19342), (36, 19411), (63, 19600), (68, 19627), (97, 19816),

Gene: Zaheer_16 Start: 9472, Stop: 10140, Start Num: 7

Candidate Starts for Zaheer_16:

(Start: 7 @9472 has 183 MA's), (16, 9541), (43, 9694), (53, 9760), (72, 9880), (100, 10066),

Gene: Zakai_13 Start: 8990, Stop: 9889, Start Num: 7

Candidate Starts for Zakai_13:

(Start: 7 @8990 has 183 MA's), (17, 9053), (21, 9074), (36, 9143), (55, 9275), (57, 9296), (71, 9377), (84, 9458), (85, 9467), (99, 9557), (100, 9569), (107, 9608), (118, 9671), (119, 9677), (128, 9758), (135, 9803), (145, 9872),

Gene: Zaria_13 Start: 8990, Stop: 9892, Start Num: 7

Candidate Starts for Zaria_13:

(Start: 7 @8990 has 183 MA's), (17, 9056), (19, 9062), (36, 9146), (57, 9299), (60, 9311), (71, 9380), (79, 9419), (83, 9449), (85, 9470), (118, 9674), (123, 9713), (135, 9806), (137, 9830), (145, 9875),

Gene: ZhongYanYuan_12 Start: 8830, Stop: 9729, Start Num: 7

Candidate Starts for ZhongYanYuan_12:

(Start: 7 @8830 has 183 MA's), (17, 8893), (21, 8914), (36, 8983), (55, 9115), (57, 9136), (71, 9217), (84, 9298), (85, 9307), (99, 9397), (100, 9409), (107, 9448), (116, 9490), (118, 9511), (119, 9517), (135, 9643), (145, 9712),

Gene: Zion_23 Start: 15926, Stop: 16588, Start Num: 7

Candidate Starts for Zion_23:

(Start: 7 @15926 has 183 MA's), (9, 15944), (20, 16007), (21, 16013), (59, 16247), (75, 16343), (84, 16400), (86, 16415), (109, 16559),

Gene: Zucker_14 Start: 8546, Stop: 9211, Start Num: 7

Candidate Starts for Zucker_14:

(Start: 7 @8546 has 183 MA's), (11, 8591), (18, 8621), (37, 8714), (38, 8717), (42, 8756), (48, 8807), (69, 8927), (100, 9137), (105, 9167),