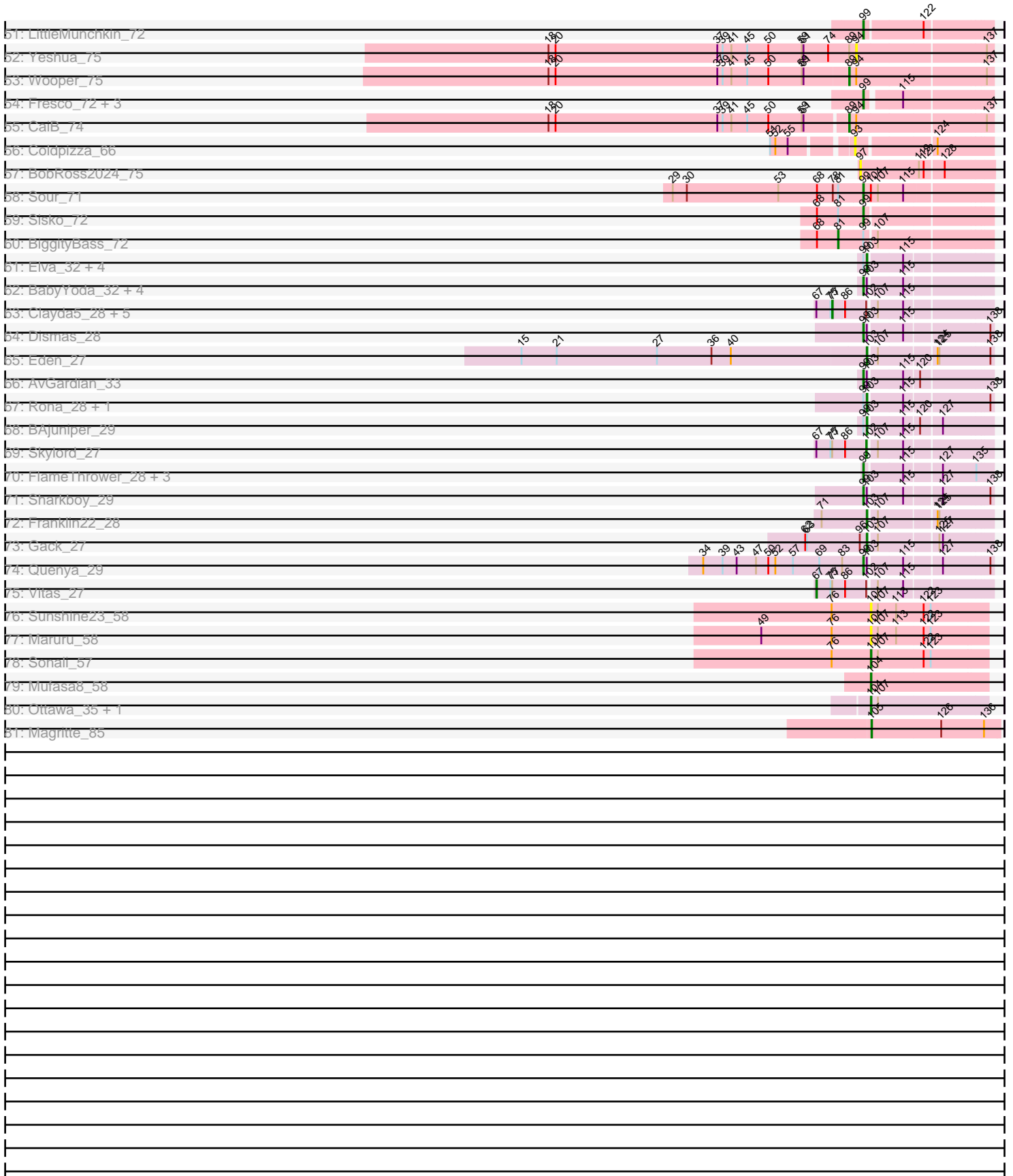


Pham 202696



Note: Tracks are now grouped by subcluster and scaled. Switching in subcluster is indicated by changes in track color. Track scale is now set by default to display the region 30 bp upstream of start 1 to 30 bp downstream of the last possible start. If this default region is judged to be packed too tightly with annotated starts, the track will be further scaled to only show that region of the ORF with annotated starts. This action will be indicated by adding "Zoomed" to the title. For starts, yellow indicates the location of called starts comprised solely of Glimmer/GeneMark auto-annotations, green indicates the location of called starts with at least 1 manual gene annotation.

Pham 202696 Report

This analysis was run 01/18/25 on database version 583.

Pham number 202696 has 195 members, 26 are drafts.

Phages represented in each track:

- Track 1 : Tank_57, Wilde_59
- Track 2 : Rizwana_57
- Track 3 : BruhMoment_65
- Track 4 : SilentRX_55, AWGoat_53
- Track 5 : FrenchFry_73, Ares_72, Tinciduntolum_73, TA17A_72, Lars_73, Allegro_72, Sabella_72, Kheth_72, Kolhan_73, Faze9_71, Lephleur_72, Godines_73, Glass_74, Eaglehorse_72, Brownie5_72, Boyle_72, Calamitous_73, LizLemon_72, Rhinoforte_72, Rosebush_70, Kaleb_73, MasterPo_73, Vic9_75, Coffee_72, Laurie_73, LilSmirk_72, Phantasmagoria_71
- Track 6 : Blocker23_72, Bananafish_73, Tres_72, ItsyBitsy1_70, Holeinone_72, West99_72
- Track 7 : Qyrzula_65, Hedgerow_72, Opia_73, Arbiter_69
- Track 8 : ChaChing_89, Gervas_90, RagingRooster_88, Corofin_89, SynergyX_89, GlenHope_90, Audrey_89, Briakila_89, Baloo_88, Devonte_87, Deenasa_89, Yahalom_87, OrangeOswald_88, MmasiCarm_90, RomaT_89
- Track 9 : Yinz_87, HarveySr_86, Marley1013_88, Gadget_87, Glubnar_88, Morty007_86, Bernardo_87, SwainyDoc_89, Phayeta_92
- Track 10 : Philly_88, Halfpint_88, Kronus_89, Rita1961_90, Nozo_89, Compostia_88, Casbah_89, Jackstina_83
- Track 11 : Ben11_89, Heathcliff_89, Akoma_89, SlippinJimmy_92, Chandler_89, Chentzyk_91, Daisy_88, Phaedrus_84, Chalmers_88, Kamiyu_89
- Track 12 : Phlyer_89, Athena_91
- Track 13 : TinyTerror_90
- Track 14 : LestyG_87, Obutu_91, Abinghost_89
- Track 15 : Mortcellus_89, Tydolla_85
- Track 16 : Neos5_87
- Track 17 : Thonko_92
- Track 18 : Mischief19_73
- Track 19 : Maih_66, Asis_68
- Track 20 : Saletе_67, BayC_67
- Track 21 : BabyGotBac_68, TP1604_67
- Track 22 : Xkcd426_72
- Track 23 : RainyPolka_66
- Track 24 : Abt2graduatex2_67
- Track 25 : YDN12_68
- Track 26 : Henoccus_58, JackieB_58, Araceli_57
- Track 27 : Microdon_57

- Track 28 : Marky_61
- Track 29 : Bogota_58, UNTPL_59
- Track 30 : Crosby_59
- Track 31 : Intolerant_55
- Track 32 : LazerLemon_58
- Track 33 : Stuff_57
- Track 34 : Dalilpop_10, GRU1_92
- Track 35 : Flapper_8
- Track 36 : GTE5_91
- Track 37 : Turuncu_9
- Track 38 : MerCougar_7, Outis_7, StarStruck_7
- Track 39 : NosilaM_8, Kabluna_8, Bonum_8
- Track 40 : Buggaboo_7
- Track 41 : Phomeo_8
- Track 42 : SuperSulley_7
- Track 43 : Float294_11, Skysand_11
- Track 44 : RedRaider_12
- Track 45 : Patio_12
- Track 46 : Ennea_12
- Track 47 : Lollipop1437_11
- Track 48 : CherryTomatoes_188, SCentae_185, Pupper_186
- Track 49 : AnClar_71
- Track 50 : CharlottesWeb_70, Mariokart_70
- Track 51 : LittleMunchkin_72
- Track 52 : Yeshua_75
- Track 53 : Wooper_75
- Track 54 : Fresco_72, Ligma_72, Axumite_72, Shatter_72
- Track 55 : CaiB_74
- Track 56 : Coldpizza_66
- Track 57 : BobRoss2024_75
- Track 58 : Sour_71
- Track 59 : Sisko_72
- Track 60 : BiggityBass_72
- Track 61 : Elva_32, Stromboli_32, Icarian_34, Stoor_32, WalkingDead_32
- Track 62 : BabyYoda_32, SanaSana_34, Loviatar_56, DirtyBubble_31, Akino08_58
- Track 63 : Clayda5_28, Coltrane_27, Rollins_27, Bernstein_27, Brahms_27, Armstrong_27
- Track 64 : Dismas_28
- Track 65 : Eden_27
- Track 66 : AvGardian_33
- Track 67 : Rona_28, Kieran_28
- Track 68 : BAjuniper_29
- Track 69 : Skylord_27
- Track 70 : FlameThrower_28, Katzastrophic_28, Celaena_28, Bachaco_28
- Track 71 : Sharkboy_29
- Track 72 : Franklin22_28
- Track 73 : Gack_27
- Track 74 : Quenya_29
- Track 75 : Vitas_27
- Track 76 : Sunshine23_58
- Track 77 : Maruru_58
- Track 78 : Sonali_57
- Track 79 : Mufasa8_58

- Track 80 : Ottawa_35, Kharcho_35
- Track 81 : Magritte_85

Summary of Final Annotations (See graph section above for start numbers):

The start number called the most often in the published annotations is 95, it was called in 66 of the 169 non-draft genes in the pham.

Genes that call this "Most Annotated" start:

- Abinghost_89, Abt2graduatex2_67, Allegro_72, Ares_72, Asis_68, Audrey_89, BabyGotBac_68, Baloo_88, Bananafish_73, BayC_67, Blocker23_72, Boyle_72, Briakila_89, Brownie5_72, Calamitous_73, Casbah_89, ChaChing_89, CherryTomatoes_188, Coffee_72, Compostia_88, Corofin_89, Deenasa_89, Devonte_87, Eaglehorse_72, Faze9_71, FrenchFry_73, Gervas_90, Glass_74, GlenHope_90, Godines_73, Halfpint_88, Holeinone_72, ItsyBitsy1_70, Jackstina_83, Kaleb_73, Kheth_72, Kolhan_73, Kronus_89, Lars_73, Laurie_73, Lephleur_72, LestyG_87, LilSmirk_72, LizLemon_72, Maih_66, MasterPo_73, MmasiCarm_90, Nozo_89, Obutu_91, OrangeOswald_88, Phantasmagoria_71, Philly_88, Pupper_186, RagingRooster_88, RainyPolka_66, Rhinoforte_72, Rita1961_90, RomaT_89, Rosebush_70, SCentae_185, Sabella_72, Salete_67, SynergyX_89, TA17A_72, TP1604_67, Tinciduntolum_73, Tres_72, Vic9_75, West99_72, Xkcd426_72, YDN12_68, Yahalom_87,

Genes that have the "Most Annotated" start but do not call it:

- Akoma_89, Arbiter_69, Athena_91, Ben11_89, Chalmers_88, Chandler_89, Chentzyk_91, Daisy_88, Heathcliff_89, Hedgerow_72, Kamiyu_89, LazerLemon_58, Mortcellus_89, Opia_73, Phaedrus_84, Phlyer_89, Qyrzula_65, SlippinJimmy_92, TinyTerror_90, Tydolla_85,

Genes that do not have the "Most Annotated" start:

- AWGoat_53, Akino08_58, AnClar_71, Araceli_57, Armstrong_27, AvGardian_33, Axumite_72, BAJuniper_29, BabyYoda_32, Bachaco_28, Bernardo_87, Bernstein_27, BiggityBass_72, BobRoss2024_75, Bogota_58, Bonum_8, Brahms_27, BruhMoment_65, Buggaboo_7, CaiB_74, Celaena_28, CharlottesWeb_70, Clayda5_28, Coldpizza_66, Coltrane_27, Crosby_59, Dalilpop_10, DirtyBubble_31, Dismas_28, Eden_27, Elva_32, Ennea_12, FlameThrower_28, Flapper_8, Float294_11, Franklin22_28, Fresco_72, GRU1_92, GTE5_91, Gack_27, Gadget_87, Glubnar_88, HarveySr_86, Henoccus_58, Icarian_34, Intolerant_55, JackieB_58, Kabluna_8, Katzastrophic_28, Kharcho_35, Kieran_28, Ligma_72, LittleMunchkin_72, Lollipop1437_11, Loviatar_56, Magritte_85, Mariokart_70, Marky_61, Marley1013_88, Maruru_58, MerCougar_7, Microdon_57, Mischief19_73, Morty007_86, Mufasa8_58, Neos5_87, NosilaM_8, Ottawa_35, Outis_7, Patio_12, Phayeta_92, Phomeo_8, Quenya_29, RedRaider_12, Rizwana_57, Rollins_27, Rona_28, SanaSana_34, Sharkboy_29, Shatter_72, SilentRX_55, Sisko_72, Skylord_27, Skysand_11, Sonali_57, Sour_71, StarStruck_7, Stoor_32, Stromboli_32, Stuff_57, Sunshine23_58, SuperSulley_7, SwainyDoc_89, Tank_57, Thonko_92, Turuncu_9, UNTPL_59, Vitas_27, WalkingDead_32, Wilde_59, Wooper_75, Yeshua_75, Yinz_87,

Summary by start number:

Start 65:

- Found in 6 of 195 (3.1%) of genes in pham
- Manual Annotations of this start: 5 of 169
- Called 83.3% of time when present
- Phage (with cluster) where this start called: Bogota_58 (BH), Intolerant_55 (BH), Microdon_57 (BH), Stuff_57 (BH), UNTPL_59 (BH),

Start 66:

- Found in 6 of 195 (3.1%) of genes in pham
- Manual Annotations of this start: 6 of 169
- Called 100.0% of time when present
- Phage (with cluster) where this start called: Araceli_57 (BH), Crosby_59 (BH), Henoccus_58 (BH), JackieB_58 (BH), LazerLemon_58 (BH), Marky_61 (BH),

Start 67:

- Found in 8 of 195 (4.1%) of genes in pham
- Manual Annotations of this start: 1 of 169
- Called 12.5% of time when present
- Phage (with cluster) where this start called: Vitas_27 (EB),

Start 69:

- Found in 7 of 195 (3.6%) of genes in pham
- Manual Annotations of this start: 1 of 169
- Called 14.3% of time when present
- Phage (with cluster) where this start called: Lollipop1437_11 (CR3),

Start 72:

- Found in 19 of 195 (9.7%) of genes in pham
- Manual Annotations of this start: 1 of 169
- Called 5.3% of time when present
- Phage (with cluster) where this start called: Neos5_87 (B3),

Start 76:

- Found in 55 of 195 (28.2%) of genes in pham
- Manual Annotations of this start: 7 of 169
- Called 18.2% of time when present
- Phage (with cluster) where this start called: Dalilpop_10 (CR1), Ennea_12 (CR3), Flapper_8 (CR1), Float294_11 (CR3), GRU1_92 (CR1), GTE5_91 (CR1), Patio_12 (CR3), RedRaider_12 (CR3), Skysand_11 (CR3), Turuncu_9 (CR1),

Start 77:

- Found in 8 of 195 (4.1%) of genes in pham
- Manual Annotations of this start: 6 of 169
- Called 75.0% of time when present
- Phage (with cluster) where this start called: Armstrong_27 (EB), Bernstein_27 (EB), Brahms_27 (EB), Clayda5_28 (EB), Coltrane_27 (EB), Rollins_27 (EB),

Start 81:

- Found in 4 of 195 (2.1%) of genes in pham
- Manual Annotations of this start: 2 of 169
- Called 50.0% of time when present
- Phage (with cluster) where this start called: AnClar_71 (DR), BiggityBass_72 (DR),

Start 84:

- Found in 8 of 195 (4.1%) of genes in pham
- Manual Annotations of this start: 7 of 169
- Called 87.5% of time when present
- Phage (with cluster) where this start called: Bonum_8 (CR2), Kabluna_8 (CR2), MerCougar_7 (CR2), NosilaM_8 (CR2), Outis_7 (CR2), StarStruck_7 (CR2), SuperSulley_7 (CR2),

Start 86:

- Found in 10 of 195 (5.1%) of genes in pham
- Manual Annotations of this start: 2 of 169
- Called 20.0% of time when present
- Phage (with cluster) where this start called: AWGoat_53 (AP4), SilentRX_55 (AP4),

Start 87:

- Found in 45 of 195 (23.1%) of genes in pham
- Manual Annotations of this start: 8 of 169
- Called 17.8% of time when present
- Phage (with cluster) where this start called: Arbiter_69 (B2), Buggaboo_7 (CR2), Hedgerow_72 (B2), Opia_73 (B2), Qyrzula_65 (B2), Rizwana_57 (AP1), Tank_57 (AP1), Wilde_59 (AP1),

Start 88:

- Found in 1 of 195 (0.5%) of genes in pham
- Manual Annotations of this start: 1 of 169
- Called 100.0% of time when present
- Phage (with cluster) where this start called: BruhMoment_65 (AP3),

Start 89:

- Found in 3 of 195 (1.5%) of genes in pham
- Manual Annotations of this start: 2 of 169
- Called 66.7% of time when present
- Phage (with cluster) where this start called: CaiB_74 (DR), Wooper_75 (DR),

Start 91:

- Found in 1 of 195 (0.5%) of genes in pham
- Manual Annotations of this start: 1 of 169
- Called 100.0% of time when present
- Phage (with cluster) where this start called: Thonko_92 (B8),

Start 92:

- Found in 10 of 195 (5.1%) of genes in pham
- Manual Annotations of this start: 7 of 169
- Called 90.0% of time when present
- Phage (with cluster) where this start called: Bernardo_87 (B3), Gadget_87 (B3), Glubnar_88 (B3), HarveySr_86 (B3), Marley1013_88 (B3), Morty007_86 (B3), Phayeta_92 (B3), SwainyDoc_89 (B3), Yinz_87 (B3),

Start 93:

- Found in 1 of 195 (0.5%) of genes in pham
- No Manual Annotations of this start.
- Called 100.0% of time when present

- Phage (with cluster) where this start called: Coldpizza_66 (DR),

Start 94:

- Found in 3 of 195 (1.5%) of genes in pham
- No Manual Annotations of this start.
- Called 33.3% of time when present
- Phage (with cluster) where this start called: Yeshua_75 (DR),

Start 95:

- Found in 92 of 195 (47.2%) of genes in pham
- Manual Annotations of this start: 66 of 169
- Called 78.3% of time when present
- Phage (with cluster) where this start called: Abinghost_89 (B3), Abt2graduatex2_67 (BG), Allegro_72 (B2), Ares_72 (B2), Asis_68 (BG), Audrey_89 (B3), BabyGotBac_68 (BG), Baloo_88 (B3), Bananafish_73 (B2), BayC_67 (BG), Blocker23_72 (B2), Boyle_72 (B2), Briakila_89 (B3), Brownie5_72 (B2), Calamitous_73 (B2), Casbah_89 (B3), ChaChing_89 (B3), CherryTomatoes_188 (DO), Coffee_72 (B2), Compostia_88 (B3), Corofin_89 (B3), Deenasa_89 (B3), Devonte_87 (B3), Eaglehorse_72 (B2), Faze9_71 (B2), FrenchFry_73 (B2), Gervas_90 (B3), Glass_74 (B2), GlenHope_90 (B3), Godines_73 (B2), Halfpint_88 (B3), Holeinone_72 (B2), ItsyBitsy1_70 (B2), Jackstina_83 (B3), Kaleb_73 (B2), Kheth_72 (B2), Kolhan_73 (B2), Kronus_89 (B3), Lars_73 (B2), Laurie_73 (B2), Lephleur_72 (B2), LestyG_87 (B3), LilSmirk_72 (B2), LizLemon_72 (B2), Maih_66 (BG), MasterPo_73 (B2), MmasiCarm_90 (B3), Nozo_89 (B3), Obutu_91 (B3), OrangeOswald_88 (B3), Phantasmagoria_71 (B2), Philly_88 (B3), Pupper_186 (DO), RagingRooster_88 (B3), RainyPolka_66 (BG), Rhinoforte_72 (B2), Rita1961_90 (B3), RomaT_89 (B3), Rosebush_70 (B2), SCentae_185 (DO), Sabella_72 (B2), Salete_67 (BG), SynergyX_89 (B3), TA17A_72 (B2), TP1604_67 (BG), Tinciduntolum_73 (B2), Tres_72 (B2), Vic9_75 (B2), West99_72 (B2), Xkcd426_72 (BG), YDN12_68 (BG), Yahalom_87 (B3),

Start 97:

- Found in 2 of 195 (1.0%) of genes in pham
- No Manual Annotations of this start.
- Called 50.0% of time when present
- Phage (with cluster) where this start called: BobRoss2024_75 (DR),

Start 98:

- Found in 1 of 195 (0.5%) of genes in pham
- No Manual Annotations of this start.
- Called 100.0% of time when present
- Phage (with cluster) where this start called: Phomeo_8 (CR2),

Start 99:

- Found in 32 of 195 (16.4%) of genes in pham
- Manual Annotations of this start: 19 of 169
- Called 68.8% of time when present
- Phage (with cluster) where this start called: Akino08_58 (EB), AvGardian_33 (EB), Axumite_72 (DR), BabyYoda_32 (EB), Bachaco_28 (EB), Celaena_28 (EB), CharlottesWeb_70 (DR), DirtyBubble_31 (EB), Dismas_28 (EB), FlameThrower_28 (EB), Fresco_72 (DR), Katzastrophic_28 (EB), Ligma_72 (DR), LittleMunchkin_72 (DR), Loviatar_56 (EB), Mariokart_70 (DR), Quenya_29 (EB), SanaSana_34 (EB), Sharkboy_29 (EB), Shatter_72 (DR), Sisko_72 (DR), Sour_71 (DR),

Start 101:

- Found in 1 of 195 (0.5%) of genes in pham
- Manual Annotations of this start: 1 of 169
- Called 100.0% of time when present
- Phage (with cluster) where this start called: Mischief19_73 (BG),

Start 102:

- Found in 8 of 195 (4.1%) of genes in pham
- Manual Annotations of this start: 1 of 169
- Called 12.5% of time when present
- Phage (with cluster) where this start called: Skylord_27 (EB),

Start 103:

- Found in 20 of 195 (10.3%) of genes in pham
- Manual Annotations of this start: 10 of 169
- Called 55.0% of time when present
- Phage (with cluster) where this start called: BAjuniper_29 (EB), Eden_27 (EB), Elva_32 (EB), Franklin22_28 (EB), Gack_27 (EB), Icarian_34 (EB), Kieran_28 (EB), Rona_28 (EB), Stoor_32 (EB), Stromboli_32 (EB), WalkingDead_32 (EB),

Start 104:

- Found in 48 of 195 (24.6%) of genes in pham
- Manual Annotations of this start: 12 of 169
- Called 39.6% of time when present
- Phage (with cluster) where this start called: Akoma_89 (B3), Ben11_89 (B3), Chalmers_88 (B3), Chandler_89 (B3), Chentzyk_91 (B3), Daisy_88 (B3), Heathcliff_89 (B3), Kamiyu_89 (B3), Kharcho_35 (FM), Maruru_58 (FG), Mortcellus_89 (B3), Mufasa8_58 (FG), Ottawa_35 (FM), Phaedrus_84 (B3), SlippinJimmy_92 (B3), Sonali_57 (FG), Sunshine23_58 (FG), TinyTerror_90 (B3), Tydolla_85 (B3),

Start 105:

- Found in 1 of 195 (0.5%) of genes in pham
- Manual Annotations of this start: 1 of 169
- Called 100.0% of time when present
- Phage (with cluster) where this start called: Magritte_85 (singleton),

Start 110:

- Found in 43 of 195 (22.1%) of genes in pham
- Manual Annotations of this start: 2 of 169
- Called 4.7% of time when present
- Phage (with cluster) where this start called: Athena_91 (B3), Phlyer_89 (B3),

Summary by clusters:

There are 17 clusters represented in this pham: CR2, CR3, singleton, BG, DO, AP3, AP1, BH, AP4, EB, CR1, B8, B2, B3, DR, FM, FG,

Info for manual annotations of cluster AP1:

- Start number 87 was manually annotated 3 times for cluster AP1.

Info for manual annotations of cluster AP3:

- Start number 88 was manually annotated 1 time for cluster AP3.

Info for manual annotations of cluster AP4:

- Start number 86 was manually annotated 2 times for cluster AP4.

Info for manual annotations of cluster B2:

- Start number 87 was manually annotated 4 times for cluster B2.
- Start number 95 was manually annotated 28 times for cluster B2.

Info for manual annotations of cluster B3:

- Start number 72 was manually annotated 1 time for cluster B3.
- Start number 92 was manually annotated 7 times for cluster B3.
- Start number 95 was manually annotated 26 times for cluster B3.
- Start number 104 was manually annotated 8 times for cluster B3.
- Start number 110 was manually annotated 2 times for cluster B3.

Info for manual annotations of cluster B8:

- Start number 91 was manually annotated 1 time for cluster B8.

Info for manual annotations of cluster BG:

- Start number 95 was manually annotated 9 times for cluster BG.
- Start number 101 was manually annotated 1 time for cluster BG.

Info for manual annotations of cluster BH:

- Start number 65 was manually annotated 5 times for cluster BH.
- Start number 66 was manually annotated 6 times for cluster BH.

Info for manual annotations of cluster CR1:

- Start number 76 was manually annotated 3 times for cluster CR1.

Info for manual annotations of cluster CR2:

- Start number 84 was manually annotated 7 times for cluster CR2.
- Start number 87 was manually annotated 1 time for cluster CR2.

Info for manual annotations of cluster CR3:

- Start number 69 was manually annotated 1 time for cluster CR3.
- Start number 76 was manually annotated 4 times for cluster CR3.

Info for manual annotations of cluster DO:

- Start number 95 was manually annotated 3 times for cluster DO.

Info for manual annotations of cluster DR:

- Start number 81 was manually annotated 2 times for cluster DR.
- Start number 89 was manually annotated 2 times for cluster DR.
- Start number 99 was manually annotated 8 times for cluster DR.

Info for manual annotations of cluster EB:

- Start number 67 was manually annotated 1 time for cluster EB.
- Start number 77 was manually annotated 6 times for cluster EB.
- Start number 99 was manually annotated 11 times for cluster EB.
- Start number 102 was manually annotated 1 time for cluster EB.
- Start number 103 was manually annotated 10 times for cluster EB.

Info for manual annotations of cluster FG:

- Start number 104 was manually annotated 2 times for cluster FG.

Info for manual annotations of cluster FM:

- Start number 104 was manually annotated 2 times for cluster FM.

Gene Information:

Gene: AWGoat_53 Start: 40310, Stop: 40074, Start Num: 86

Candidate Starts for AWGoat_53:

(Start: 86 @40310 has 2 MA's), (108, 40259), (Start: 110 @40250 has 2 MA's), (117, 40211), (121, 40196),

Gene: Abinghost_89 Start: 63262, Stop: 63050, Start Num: 95

Candidate Starts for Abinghost_89:

(Start: 76 @63307 has 7 MA's), (Start: 95 @63262 has 66 MA's), (Start: 104 @63244 has 12 MA's), (Start: 110 @63214 has 2 MA's), (122, 63157), (124, 63139),

Gene: Abt2graduatex2_67 Start: 52651, Stop: 52863, Start Num: 95

Candidate Starts for Abt2graduatex2_67:

(73, 52615), (Start: 95 @52651 has 66 MA's), (106, 52675), (122, 52753), (125, 52774),

Gene: Akino08_58 Start: 24821, Stop: 24624, Start Num: 99

Candidate Starts for Akino08_58:

(Start: 99 @24821 has 19 MA's), (Start: 103 @24815 has 10 MA's), (115, 24761),

Gene: Akoma_89 Start: 63284, Stop: 63090, Start Num: 104

Candidate Starts for Akoma_89:

(Start: 76 @63347 has 7 MA's), (Start: 95 @63302 has 66 MA's), (Start: 104 @63284 has 12 MA's), (Start: 110 @63254 has 2 MA's), (122, 63197), (124, 63179),

Gene: Allegro_72 Start: 59331, Stop: 59107, Start Num: 95

Candidate Starts for Allegro_72:

(35, 59589), (38, 59565), (60, 59427), (Start: 87 @59352 has 8 MA's), (Start: 95 @59331 has 66 MA's), (111, 59277), (131, 59172), (133, 59157),

Gene: AnClar_71 Start: 57138, Stop: 56902, Start Num: 81

Candidate Starts for AnClar_71:

(68, 57174), (Start: 81 @57138 has 2 MA's), (Start: 99 @57102 has 19 MA's), (107, 57084),

Gene: Araceli_57 Start: 42438, Stop: 42737, Start Num: 66

Candidate Starts for Araceli_57:

(44, 42309), (54, 42384), (Start: 66 @42438 has 6 MA's), (82, 42483), (85, 42492), (107, 42546), (131, 42678),

Gene: Arbiter_69 Start: 59393, Stop: 59148, Start Num: 87

Candidate Starts for Arbiter_69:

(35, 59630), (38, 59606), (60, 59468), (Start: 87 @59393 has 8 MA's), (Start: 95 @59372 has 66 MA's), (111, 59318), (131, 59213), (133, 59198),

Gene: Ares_72 Start: 59337, Stop: 59113, Start Num: 95

Candidate Starts for Ares_72:

(35, 59595), (38, 59571), (60, 59433), (Start: 87 @59358 has 8 MA's), (Start: 95 @59337 has 66 MA's), (111, 59283), (131, 59178), (133, 59163),

Gene: Armstrong_27 Start: 20896, Stop: 20648, Start Num: 77

Candidate Starts for Armstrong_27:

(Start: 67 @20923 has 1 MA's), (75, 20899), (Start: 77 @20896 has 6 MA's), (Start: 86 @20875 has 2 MA's), (Start: 102 @20839 has 1 MA's), (107, 20827), (115, 20785),

Gene: Asis_68 Start: 52546, Stop: 52758, Start Num: 95

Candidate Starts for Asis_68:

(60, 52453), (Start: 95 @52546 has 66 MA's), (106, 52570), (122, 52648), (132, 52708), (138, 52753),

Gene: Athena_91 Start: 63989, Stop: 63825, Start Num: 110

Candidate Starts for Athena_91:

(Start: 76 @64082 has 7 MA's), (Start: 95 @64037 has 66 MA's), (Start: 104 @64019 has 12 MA's), (Start: 110 @63989 has 2 MA's), (122, 63932), (124, 63914),

Gene: Audrey_89 Start: 63291, Stop: 63079, Start Num: 95

Candidate Starts for Audrey_89:

(Start: 76 @63336 has 7 MA's), (Start: 95 @63291 has 66 MA's), (Start: 104 @63273 has 12 MA's), (Start: 110 @63243 has 2 MA's), (122, 63186), (124, 63168),

Gene: AvGardian_33 Start: 23504, Stop: 23307, Start Num: 99

Candidate Starts for AvGardian_33:

(Start: 99 @23504 has 19 MA's), (Start: 103 @23498 has 10 MA's), (115, 23444), (120, 23420),

Gene: Axumite_72 Start: 54547, Stop: 54353, Start Num: 99

Candidate Starts for Axumite_72:

(Start: 99 @54547 has 19 MA's), (115, 54493),

Gene: BAjuniper_29 Start: 23728, Stop: 23537, Start Num: 103

Candidate Starts for BAjuniper_29:

(Start: 99 @23734 has 19 MA's), (Start: 103 @23728 has 10 MA's), (115, 23674), (120, 23650), (127, 23617),

Gene: BabyGotBac_68 Start: 52472, Stop: 52684, Start Num: 95

Candidate Starts for BabyGotBac_68:

(60, 52379), (Start: 95 @52472 has 66 MA's), (122, 52574), (132, 52634), (138, 52679),

Gene: BabyYoda_32 Start: 24023, Stop: 23826, Start Num: 99

Candidate Starts for BabyYoda_32:

(Start: 99 @24023 has 19 MA's), (Start: 103 @24017 has 10 MA's), (115, 23963),

Gene: Bachaco_28 Start: 23946, Stop: 23749, Start Num: 99

Candidate Starts for Bachaco_28:

(Start: 99 @23946 has 19 MA's), (115, 23886), (127, 23829), (135, 23775),

Gene: Baloo_88 Start: 63143, Stop: 62931, Start Num: 95

Candidate Starts for Baloo_88:

(Start: 76 @63188 has 7 MA's), (Start: 95 @63143 has 66 MA's), (Start: 104 @63125 has 12 MA's), (Start: 110 @63095 has 2 MA's), (122, 63038), (124, 63020),

Gene: Bananafish_73 Start: 59267, Stop: 59043, Start Num: 95

Candidate Starts for Bananafish_73:

(35, 59525), (38, 59501), (60, 59363), (Start: 87 @59288 has 8 MA's), (Start: 95 @59267 has 66 MA's), (131, 59108), (133, 59093),

Gene: BayC_67 Start: 52550, Stop: 52762, Start Num: 95

Candidate Starts for BayC_67:

(60, 52457), (Start: 95 @52550 has 66 MA's), (106, 52574), (107, 52577), (122, 52652), (132, 52712), (138, 52757),

Gene: Ben11_89 Start: 63500, Stop: 63306, Start Num: 104

Candidate Starts for Ben11_89:

(Start: 76 @63563 has 7 MA's), (Start: 95 @63518 has 66 MA's), (Start: 104 @63500 has 12 MA's), (Start: 110 @63470 has 2 MA's), (122, 63413), (124, 63395),

Gene: Bernardo_87 Start: 62697, Stop: 62485, Start Num: 92

Candidate Starts for Bernardo_87:

(Start: 72 @62736 has 1 MA's), (Start: 92 @62697 has 7 MA's), (122, 62592), (124, 62574), (127, 62565), (135, 62511),

Gene: Bernstein_27 Start: 20951, Stop: 20703, Start Num: 77

Candidate Starts for Bernstein_27:

(Start: 67 @20978 has 1 MA's), (75, 20954), (Start: 77 @20951 has 6 MA's), (Start: 86 @20930 has 2 MA's), (Start: 102 @20894 has 1 MA's), (107, 20882), (115, 20840),

Gene: BiggityBass_72 Start: 56910, Stop: 56674, Start Num: 81

Candidate Starts for BiggityBass_72:

(68, 56946), (Start: 81 @56910 has 2 MA's), (Start: 99 @56874 has 19 MA's), (107, 56856),

Gene: Blocker23_72 Start: 59332, Stop: 59108, Start Num: 95

Candidate Starts for Blocker23_72:

(35, 59590), (38, 59566), (60, 59428), (Start: 87 @59353 has 8 MA's), (Start: 95 @59332 has 66 MA's), (131, 59173), (133, 59158),

Gene: BobRoss2024_75 Start: 55799, Stop: 55587, Start Num: 97

Candidate Starts for BobRoss2024_75:

(97, 55799), (119, 55703), (122, 55697), (128, 55667),

Gene: Bogota_58 Start: 42749, Stop: 43051, Start Num: 65

Candidate Starts for Bogota_58:

(1, 41420), (2, 41660), (3, 41729), (4, 41807), (5, 41903), (6, 41912), (7, 42125), (8, 42149), (9, 42164), (10, 42179), (13, 42236), (23, 42365), (24, 42383), (44, 42623), (54, 42698), (Start: 65 @42749 has 5 MA's), (82, 42797), (107, 42860), (131, 42992), (138, 43046),

Gene: Bonum_8 Start: 5088, Stop: 5327, Start Num: 84

Candidate Starts for Bonum_8:

(48, 4953), (49, 4956), (57, 5010), (Start: 84 @5088 has 7 MA's), (Start: 87 @5094 has 8 MA's), (107, 5145), (129, 5256), (137, 5316),

Gene: Boyle_72 Start: 59376, Stop: 59152, Start Num: 95

Candidate Starts for Boyle_72:

(35, 59634), (38, 59610), (60, 59472), (Start: 87 @59397 has 8 MA's), (Start: 95 @59376 has 66 MA's), (111, 59322), (131, 59217), (133, 59202),

Gene: Brahms_27 Start: 20898, Stop: 20650, Start Num: 77

Candidate Starts for Brahms_27:

(Start: 67 @20925 has 1 MA's), (75, 20901), (Start: 77 @20898 has 6 MA's), (Start: 86 @20877 has 2 MA's), (Start: 102 @20841 has 1 MA's), (107, 20829), (115, 20787),

Gene: Briakila_89 Start: 63489, Stop: 63277, Start Num: 95

Candidate Starts for Briakila_89:

(Start: 76 @63534 has 7 MA's), (Start: 95 @63489 has 66 MA's), (Start: 104 @63471 has 12 MA's), (Start: 110 @63441 has 2 MA's), (122, 63384), (124, 63366),

Gene: Brownie5_72 Start: 59377, Stop: 59153, Start Num: 95

Candidate Starts for Brownie5_72:

(35, 59635), (38, 59611), (60, 59473), (Start: 87 @59398 has 8 MA's), (Start: 95 @59377 has 66 MA's), (111, 59323), (131, 59218), (133, 59203),

Gene: BruhMoment_65 Start: 44738, Stop: 44514, Start Num: 88

Candidate Starts for BruhMoment_65:

(33, 45002), (40, 44936), (42, 44933), (46, 44897), (Start: 88 @44738 has 1 MA's), (108, 44693), (114, 44669), (117, 44648), (118, 44642), (122, 44630), (128, 44600),

Gene: Buggaboo_7 Start: 4613, Stop: 4846, Start Num: 87

Candidate Starts for Buggaboo_7:

(26, 4253), (48, 4472), (49, 4475), (57, 4529), (Start: 84 @4607 has 7 MA's), (Start: 87 @4613 has 8 MA's), (107, 4664), (129, 4775), (137, 4835),

Gene: CaiB_74 Start: 56451, Stop: 56221, Start Num: 89

Candidate Starts for CaiB_74:

(18, 56955), (20, 56943), (37, 56667), (39, 56658), (41, 56643), (45, 56616), (50, 56580), (59, 56523), (61, 56520), (Start: 89 @56451 has 2 MA's), (94, 56439), (137, 56232),

Gene: Calamitous_73 Start: 59266, Stop: 59042, Start Num: 95

Candidate Starts for Calamitous_73:

(35, 59524), (38, 59500), (60, 59362), (Start: 87 @59287 has 8 MA's), (Start: 95 @59266 has 66 MA's), (111, 59212), (131, 59107), (133, 59092),

Gene: Casbah_89 Start: 63602, Stop: 63390, Start Num: 95

Candidate Starts for Casbah_89:

(Start: 72 @63656 has 1 MA's), (Start: 76 @63647 has 7 MA's), (Start: 95 @63602 has 66 MA's), (Start: 104 @63584 has 12 MA's), (Start: 110 @63554 has 2 MA's), (122, 63497), (124, 63479),

Gene: Celaena_28 Start: 23631, Stop: 23434, Start Num: 99

Candidate Starts for Celaena_28:

(Start: 99 @23631 has 19 MA's), (115, 23571), (127, 23514), (135, 23460),

Gene: ChaChing_89 Start: 63304, Stop: 63092, Start Num: 95

Candidate Starts for ChaChing_89:

(Start: 76 @63349 has 7 MA's), (Start: 95 @63304 has 66 MA's), (Start: 104 @63286 has 12 MA's), (Start: 110 @63256 has 2 MA's), (122, 63199), (124, 63181),

Gene: Chalmers_88 Start: 63719, Stop: 63525, Start Num: 104

Candidate Starts for Chalmers_88:

(Start: 76 @63782 has 7 MA's), (Start: 95 @63737 has 66 MA's), (Start: 104 @63719 has 12 MA's), (Start: 110 @63689 has 2 MA's), (122, 63632), (124, 63614),

Gene: Chandler_89 Start: 64060, Stop: 63866, Start Num: 104
Candidate Starts for Chandler_89:
(Start: 76 @64123 has 7 MA's), (Start: 95 @64078 has 66 MA's), (Start: 104 @64060 has 12 MA's),
(Start: 110 @64030 has 2 MA's), (122, 63973), (124, 63955),

Gene: CharlottesWeb_70 Start: 53821, Stop: 53621, Start Num: 99
Candidate Starts for CharlottesWeb_70:
(Start: 99 @53821 has 19 MA's),

Gene: Chentzyk_91 Start: 64218, Stop: 64024, Start Num: 104
Candidate Starts for Chentzyk_91:
(Start: 76 @64281 has 7 MA's), (Start: 95 @64236 has 66 MA's), (Start: 104 @64218 has 12 MA's),
(Start: 110 @64188 has 2 MA's), (122, 64131), (124, 64113),

Gene: CherryTomatoes_188 Start: 133666, Stop: 133899, Start Num: 95
Candidate Starts for CherryTomatoes_188:
(Start: 95 @133666 has 66 MA's), (128, 133807), (130, 133816), (134, 133849),

Gene: Clayda5_28 Start: 20885, Stop: 20637, Start Num: 77
Candidate Starts for Clayda5_28:
(Start: 67 @20912 has 1 MA's), (75, 20888), (Start: 77 @20885 has 6 MA's), (Start: 86 @20864 has 2 MA's),
(Start: 102 @20828 has 1 MA's), (107, 20816), (115, 20774),

Gene: Coffee_72 Start: 59370, Stop: 59146, Start Num: 95
Candidate Starts for Coffee_72:
(35, 59628), (38, 59604), (60, 59466), (Start: 87 @59391 has 8 MA's), (Start: 95 @59370 has 66 MA's),
(111, 59316), (131, 59211), (133, 59196),

Gene: Coldpizza_66 Start: 54844, Stop: 54632, Start Num: 93
Candidate Starts for Coldpizza_66:
(51, 54964), (52, 54955), (55, 54934), (93, 54844), (124, 54721),

Gene: Coltrane_27 Start: 20898, Stop: 20650, Start Num: 77
Candidate Starts for Coltrane_27:
(Start: 67 @20925 has 1 MA's), (75, 20901), (Start: 77 @20898 has 6 MA's), (Start: 86 @20877 has 2 MA's),
(Start: 102 @20841 has 1 MA's), (107, 20829), (115, 20787),

Gene: Compostia_88 Start: 63744, Stop: 63532, Start Num: 95
Candidate Starts for Compostia_88:
(Start: 72 @63798 has 1 MA's), (Start: 76 @63789 has 7 MA's), (Start: 95 @63744 has 66 MA's),
(Start: 104 @63726 has 12 MA's), (Start: 110 @63696 has 2 MA's), (122, 63639), (124, 63621),

Gene: Corofin_89 Start: 63313, Stop: 63101, Start Num: 95
Candidate Starts for Corofin_89:
(Start: 76 @63358 has 7 MA's), (Start: 95 @63313 has 66 MA's), (Start: 104 @63295 has 12 MA's),
(Start: 110 @63265 has 2 MA's), (122, 63208), (124, 63190),

Gene: Crosby_59 Start: 42804, Stop: 43103, Start Num: 66
Candidate Starts for Crosby_59:
(12, 42252), (19, 42360), (44, 42675), (54, 42750), (Start: 66 @42804 has 6 MA's), (82, 42849), (107, 42912),
(131, 43044), (138, 43098),

Gene: Daisy_88 Start: 62846, Stop: 62652, Start Num: 104
Candidate Starts for Daisy_88:
(Start: 76 @62909 has 7 MA's), (Start: 95 @62864 has 66 MA's), (Start: 104 @62846 has 12 MA's),
(Start: 110 @62816 has 2 MA's), (122, 62759), (124, 62741),

Gene: Dalilpop_10 Start: 5833, Stop: 6087, Start Num: 76
Candidate Starts for Dalilpop_10:
(28, 5575), (32, 5608), (56, 5776), (Start: 76 @5833 has 7 MA's), (79, 5836), (90, 5869), (109, 5917),
(133, 6049), (137, 6076),

Gene: Deenasa_89 Start: 64213, Stop: 64001, Start Num: 95
Candidate Starts for Deenasa_89:
(Start: 76 @64258 has 7 MA's), (Start: 95 @64213 has 66 MA's), (Start: 104 @64195 has 12 MA's),
(Start: 110 @64165 has 2 MA's), (122, 64108), (124, 64090),

Gene: Devonte_87 Start: 62930, Stop: 62718, Start Num: 95
Candidate Starts for Devonte_87:
(Start: 76 @62975 has 7 MA's), (Start: 95 @62930 has 66 MA's), (Start: 104 @62912 has 12 MA's),
(Start: 110 @62882 has 2 MA's), (122, 62825), (124, 62807),

Gene: DirtyBubble_31 Start: 23650, Stop: 23453, Start Num: 99
Candidate Starts for DirtyBubble_31:
(Start: 99 @23650 has 19 MA's), (Start: 103 @23644 has 10 MA's), (115, 23590),

Gene: Dismas_28 Start: 23310, Stop: 23113, Start Num: 99
Candidate Starts for Dismas_28:
(Start: 99 @23310 has 19 MA's), (Start: 103 @23304 has 10 MA's), (115, 23250), (138, 23118),

Gene: Eaglehorse_72 Start: 59256, Stop: 59032, Start Num: 95
Candidate Starts for Eaglehorse_72:
(35, 59514), (38, 59490), (60, 59352), (Start: 87 @59277 has 8 MA's), (Start: 95 @59256 has 66 MA's),
(111, 59202), (131, 59097), (133, 59082),

Gene: Eden_27 Start: 21061, Stop: 20870, Start Num: 103
Candidate Starts for Eden_27:
(15, 21646), (21, 21586), (27, 21415), (36, 21322), (40, 21289), (Start: 103 @21061 has 10 MA's),
(107, 21049), (124, 20959), (125, 20956), (138, 20875),

Gene: Elva_32 Start: 23679, Stop: 23488, Start Num: 103
Candidate Starts for Elva_32:
(Start: 99 @23685 has 19 MA's), (Start: 103 @23679 has 10 MA's), (115, 23625),

Gene: Ennea_12 Start: 6510, Stop: 6764, Start Num: 76
Candidate Starts for Ennea_12:
(31, 6291), (Start: 69 @6489 has 1 MA's), (70, 6492), (Start: 76 @6510 has 7 MA's), (115, 6624), (133,
6726), (137, 6753),

Gene: Faze9_71 Start: 59394, Stop: 59170, Start Num: 95
Candidate Starts for Faze9_71:
(35, 59652), (38, 59628), (60, 59490), (Start: 87 @59415 has 8 MA's), (Start: 95 @59394 has 66 MA's),
(111, 59340), (131, 59235), (133, 59220),

Gene: FlameThrower_28 Start: 23117, Stop: 22920, Start Num: 99

Candidate Starts for FlameThrower_28:

(Start: 99 @23117 has 19 MA's), (115, 23057), (127, 23000), (135, 22946),

Gene: Flapper_8 Start: 4720, Stop: 4974, Start Num: 76

Candidate Starts for Flapper_8:

(Start: 76 @4720 has 7 MA's), (79, 4723), (90, 4756), (109, 4804), (133, 4936), (137, 4963),

Gene: Float294_11 Start: 6342, Stop: 6596, Start Num: 76

Candidate Starts for Float294_11:

(22, 5922), (31, 6105), (58, 6291), (Start: 69 @6321 has 1 MA's), (70, 6324), (Start: 76 @6342 has 7 MA's), (112, 6438), (115, 6456), (133, 6558), (137, 6585),

Gene: Franklin22_28 Start: 21221, Stop: 21030, Start Num: 103

Candidate Starts for Franklin22_28:

(71, 21296), (Start: 103 @21221 has 10 MA's), (107, 21209), (124, 21119), (125, 21116),

Gene: FrenchFry_73 Start: 59381, Stop: 59157, Start Num: 95

Candidate Starts for FrenchFry_73:

(35, 59639), (38, 59615), (60, 59477), (Start: 87 @59402 has 8 MA's), (Start: 95 @59381 has 66 MA's), (111, 59327), (131, 59222), (133, 59207),

Gene: Fresco_72 Start: 54553, Stop: 54359, Start Num: 99

Candidate Starts for Fresco_72:

(Start: 99 @54553 has 19 MA's), (115, 54499),

Gene: GRU1_92 Start: 64016, Stop: 64270, Start Num: 76

Candidate Starts for GRU1_92:

(28, 63758), (32, 63791), (56, 63959), (Start: 76 @64016 has 7 MA's), (79, 64019), (90, 64052), (109, 64100), (133, 64232), (137, 64259),

Gene: GTE5_91 Start: 64905, Stop: 65159, Start Num: 76

Candidate Starts for GTE5_91:

(Start: 76 @64905 has 7 MA's), (79, 64908), (90, 64941), (109, 64989), (125, 65073), (133, 65121), (137, 65148),

Gene: Gack_27 Start: 21104, Stop: 20913, Start Num: 103

Candidate Starts for Gack_27:

(62, 21206), (63, 21203), (96, 21116), (Start: 103 @21104 has 10 MA's), (107, 21092), (125, 20999), (127, 20993),

Gene: Gadget_87 Start: 62880, Stop: 62668, Start Num: 92

Candidate Starts for Gadget_87:

(Start: 72 @62919 has 1 MA's), (Start: 92 @62880 has 7 MA's), (122, 62775), (124, 62757), (127, 62748), (135, 62694),

Gene: Gervas_90 Start: 63758, Stop: 63546, Start Num: 95

Candidate Starts for Gervas_90:

(Start: 76 @63803 has 7 MA's), (Start: 95 @63758 has 66 MA's), (Start: 104 @63740 has 12 MA's), (Start: 110 @63710 has 2 MA's), (122, 63653), (124, 63635),

Gene: Glass_74 Start: 59382, Stop: 59158, Start Num: 95

Candidate Starts for Glass_74:

(35, 59640), (38, 59616), (60, 59478), (Start: 87 @59403 has 8 MA's), (Start: 95 @59382 has 66 MA's), (111, 59328), (131, 59223), (133, 59208),

Gene: GlenHope_90 Start: 63334, Stop: 63122, Start Num: 95

Candidate Starts for GlenHope_90:

(Start: 76 @63379 has 7 MA's), (Start: 95 @63334 has 66 MA's), (Start: 104 @63316 has 12 MA's), (Start: 110 @63286 has 2 MA's), (122, 63229), (124, 63211),

Gene: Glubnar_88 Start: 63012, Stop: 62800, Start Num: 92

Candidate Starts for Glubnar_88:

(Start: 72 @63051 has 1 MA's), (Start: 92 @63012 has 7 MA's), (122, 62907), (124, 62889), (127, 62880), (135, 62826),

Gene: Godines_73 Start: 59635, Stop: 59411, Start Num: 95

Candidate Starts for Godines_73:

(35, 59893), (38, 59869), (60, 59731), (Start: 87 @59656 has 8 MA's), (Start: 95 @59635 has 66 MA's), (111, 59581), (131, 59476), (133, 59461),

Gene: Halfpint_88 Start: 63076, Stop: 62864, Start Num: 95

Candidate Starts for Halfpint_88:

(Start: 72 @63130 has 1 MA's), (Start: 76 @63121 has 7 MA's), (Start: 95 @63076 has 66 MA's), (Start: 104 @63058 has 12 MA's), (Start: 110 @63028 has 2 MA's), (122, 62971), (124, 62953),

Gene: HarveySr_86 Start: 62323, Stop: 62111, Start Num: 92

Candidate Starts for HarveySr_86:

(Start: 72 @62362 has 1 MA's), (Start: 92 @62323 has 7 MA's), (122, 62218), (124, 62200), (127, 62191), (135, 62137),

Gene: Heathcliff_89 Start: 63240, Stop: 63046, Start Num: 104

Candidate Starts for Heathcliff_89:

(Start: 76 @63303 has 7 MA's), (Start: 95 @63258 has 66 MA's), (Start: 104 @63240 has 12 MA's), (Start: 110 @63210 has 2 MA's), (122, 63153), (124, 63135),

Gene: Hedgerow_72 Start: 59353, Stop: 59108, Start Num: 87

Candidate Starts for Hedgerow_72:

(35, 59590), (38, 59566), (60, 59428), (Start: 87 @59353 has 8 MA's), (Start: 95 @59332 has 66 MA's), (111, 59278), (131, 59173), (133, 59158),

Gene: Henoccus_58 Start: 42450, Stop: 42749, Start Num: 66

Candidate Starts for Henoccus_58:

(44, 42321), (54, 42396), (Start: 66 @42450 has 6 MA's), (82, 42495), (85, 42504), (107, 42558), (131, 42690),

Gene: Holeinone_72 Start: 59237, Stop: 59013, Start Num: 95

Candidate Starts for Holeinone_72:

(35, 59495), (38, 59471), (60, 59333), (Start: 87 @59258 has 8 MA's), (Start: 95 @59237 has 66 MA's), (131, 59078), (133, 59063),

Gene: Icarian_34 Start: 24278, Stop: 24087, Start Num: 103

Candidate Starts for Icarian_34:

(Start: 99 @24284 has 19 MA's), (Start: 103 @24278 has 10 MA's), (115, 24224),

Gene: Intolerant_55 Start: 42453, Stop: 42755, Start Num: 65

Candidate Starts for Intolerant_55:

(44, 42327), (54, 42402), (Start: 65 @42453 has 5 MA's), (82, 42501), (107, 42564), (131, 42696), (138, 42750),

Gene: ItsyBitsy1_70 Start: 59473, Stop: 59249, Start Num: 95

Candidate Starts for ItsyBitsy1_70:

(35, 59731), (38, 59707), (60, 59569), (Start: 87 @59494 has 8 MA's), (Start: 95 @59473 has 66 MA's), (131, 59314), (133, 59299),

Gene: JackieB_58 Start: 42282, Stop: 42581, Start Num: 66

Candidate Starts for JackieB_58:

(44, 42153), (54, 42228), (Start: 66 @42282 has 6 MA's), (82, 42327), (85, 42336), (107, 42390), (131, 42522),

Gene: Jackstina_83 Start: 63172, Stop: 62960, Start Num: 95

Candidate Starts for Jackstina_83:

(Start: 72 @63226 has 1 MA's), (Start: 76 @63217 has 7 MA's), (Start: 95 @63172 has 66 MA's), (Start: 104 @63154 has 12 MA's), (Start: 110 @63124 has 2 MA's), (122, 63067), (124, 63049),

Gene: Kabluna_8 Start: 4479, Stop: 4718, Start Num: 84

Candidate Starts for Kabluna_8:

(48, 4344), (49, 4347), (57, 4401), (Start: 84 @4479 has 7 MA's), (Start: 87 @4485 has 8 MA's), (107, 4536), (129, 4647), (137, 4707),

Gene: Kaleb_73 Start: 59388, Stop: 59164, Start Num: 95

Candidate Starts for Kaleb_73:

(35, 59646), (38, 59622), (60, 59484), (Start: 87 @59409 has 8 MA's), (Start: 95 @59388 has 66 MA's), (111, 59334), (131, 59229), (133, 59214),

Gene: Kamiyu_89 Start: 63243, Stop: 63049, Start Num: 104

Candidate Starts for Kamiyu_89:

(Start: 76 @63306 has 7 MA's), (Start: 95 @63261 has 66 MA's), (Start: 104 @63243 has 12 MA's), (Start: 110 @63213 has 2 MA's), (122, 63156), (124, 63138),

Gene: Katzastrophic_28 Start: 23235, Stop: 23038, Start Num: 99

Candidate Starts for Katzastrophic_28:

(Start: 99 @23235 has 19 MA's), (115, 23175), (127, 23118), (135, 23064),

Gene: Kharcho_35 Start: 14505, Stop: 14696, Start Num: 104

Candidate Starts for Kharcho_35:

(Start: 104 @14505 has 12 MA's), (107, 14517),

Gene: Kheth_72 Start: 59299, Stop: 59075, Start Num: 95

Candidate Starts for Kheth_72:

(35, 59557), (38, 59533), (60, 59395), (Start: 87 @59320 has 8 MA's), (Start: 95 @59299 has 66 MA's), (111, 59245), (131, 59140), (133, 59125),

Gene: Kieran_28 Start: 23307, Stop: 23116, Start Num: 103

Candidate Starts for Kieran_28:

(Start: 99 @23313 has 19 MA's), (Start: 103 @23307 has 10 MA's), (115, 23253), (138, 23121),

Gene: Kolhan_73 Start: 59276, Stop: 59052, Start Num: 95

Candidate Starts for Kolhan_73:

(35, 59534), (38, 59510), (60, 59372), (Start: 87 @59297 has 8 MA's), (Start: 95 @59276 has 66 MA's), (111, 59222), (131, 59117), (133, 59102),

Gene: Kronus_89 Start: 64345, Stop: 64133, Start Num: 95

Candidate Starts for Kronus_89:

(Start: 72 @64399 has 1 MA's), (Start: 76 @64390 has 7 MA's), (Start: 95 @64345 has 66 MA's), (Start: 104 @64327 has 12 MA's), (Start: 110 @64297 has 2 MA's), (122, 64240), (124, 64222),

Gene: Lars_73 Start: 59360, Stop: 59136, Start Num: 95

Candidate Starts for Lars_73:

(35, 59618), (38, 59594), (60, 59456), (Start: 87 @59381 has 8 MA's), (Start: 95 @59360 has 66 MA's), (111, 59306), (131, 59201), (133, 59186),

Gene: Laurie_73 Start: 59044, Stop: 58820, Start Num: 95

Candidate Starts for Laurie_73:

(35, 59302), (38, 59278), (60, 59140), (Start: 87 @59065 has 8 MA's), (Start: 95 @59044 has 66 MA's), (111, 58990), (131, 58885), (133, 58870),

Gene: LazerLemon_58 Start: 42972, Stop: 43271, Start Num: 66

Candidate Starts for LazerLemon_58:

(16, 42498), (23, 42582), (24, 42600), (25, 42627), (44, 42843), (54, 42918), (Start: 65 @42969 has 5 MA's), (Start: 66 @42972 has 6 MA's), (82, 43017), (85, 43026), (Start: 95 @43050 has 66 MA's), (107, 43080), (131, 43212), (138, 43266),

Gene: Lephleur_72 Start: 59222, Stop: 58998, Start Num: 95

Candidate Starts for Lephleur_72:

(35, 59480), (38, 59456), (60, 59318), (Start: 87 @59243 has 8 MA's), (Start: 95 @59222 has 66 MA's), (111, 59168), (131, 59063), (133, 59048),

Gene: LestyG_87 Start: 62831, Stop: 62619, Start Num: 95

Candidate Starts for LestyG_87:

(Start: 76 @62876 has 7 MA's), (Start: 95 @62831 has 66 MA's), (Start: 104 @62813 has 12 MA's), (Start: 110 @62783 has 2 MA's), (122, 62726), (124, 62708),

Gene: Ligma_72 Start: 54547, Stop: 54353, Start Num: 99

Candidate Starts for Ligma_72:

(Start: 99 @54547 has 19 MA's), (115, 54493),

Gene: LilSmirk_72 Start: 59259, Stop: 59035, Start Num: 95

Candidate Starts for LilSmirk_72:

(35, 59517), (38, 59493), (60, 59355), (Start: 87 @59280 has 8 MA's), (Start: 95 @59259 has 66 MA's), (111, 59205), (131, 59100), (133, 59085),

Gene: LittleMunchkin_72 Start: 57116, Stop: 56916, Start Num: 99

Candidate Starts for LittleMunchkin_72:

(Start: 99 @57116 has 19 MA's), (122, 57023),

Gene: LizLemon_72 Start: 59387, Stop: 59163, Start Num: 95

Candidate Starts for LizLemon_72:

(35, 59645), (38, 59621), (60, 59483), (Start: 87 @59408 has 8 MA's), (Start: 95 @59387 has 66 MA's), (111, 59333), (131, 59228), (133, 59213),

Gene: Lollipop1437_11 Start: 6477, Stop: 6752, Start Num: 69

Candidate Starts for Lollipop1437_11:

(31, 6279), (Start: 69 @6477 has 1 MA's), (70, 6480), (Start: 76 @6498 has 7 MA's), (115, 6612), (133, 6714), (137, 6741),

Gene: Loviatar_56 Start: 24836, Stop: 24639, Start Num: 99

Candidate Starts for Loviatar_56:

(Start: 99 @24836 has 19 MA's), (Start: 103 @24830 has 10 MA's), (115, 24776),

Gene: Magritte_85 Start: 68142, Stop: 68354, Start Num: 105

Candidate Starts for Magritte_85:

(Start: 105 @68142 has 1 MA's), (126, 68256), (136, 68328),

Gene: Maih_66 Start: 52563, Stop: 52775, Start Num: 95

Candidate Starts for Maih_66:

(60, 52470), (Start: 95 @52563 has 66 MA's), (106, 52587), (122, 52665), (132, 52725), (138, 52770),

Gene: Mariokart_70 Start: 54105, Stop: 53905, Start Num: 99

Candidate Starts for Mariokart_70:

(Start: 99 @54105 has 19 MA's),

Gene: Marky_61 Start: 43378, Stop: 43677, Start Num: 66

Candidate Starts for Marky_61:

(64, 43372), (Start: 66 @43378 has 6 MA's), (107, 43486), (135, 43648),

Gene: Marley1013_88 Start: 63672, Stop: 63460, Start Num: 92

Candidate Starts for Marley1013_88:

(Start: 72 @63711 has 1 MA's), (Start: 92 @63672 has 7 MA's), (122, 63567), (124, 63549), (127, 63540), (135, 63486),

Gene: Maruru_58 Start: 42255, Stop: 42449, Start Num: 104

Candidate Starts for Maruru_58:

(49, 42069), (Start: 76 @42189 has 7 MA's), (Start: 104 @42255 has 12 MA's), (107, 42267), (113, 42297), (122, 42342), (123, 42354),

Gene: MasterPo_73 Start: 59254, Stop: 59030, Start Num: 95

Candidate Starts for MasterPo_73:

(35, 59512), (38, 59488), (60, 59350), (Start: 87 @59275 has 8 MA's), (Start: 95 @59254 has 66 MA's), (111, 59200), (131, 59095), (133, 59080),

Gene: MerCougar_7 Start: 4830, Stop: 5069, Start Num: 84

Candidate Starts for MerCougar_7:

(49, 4692), (57, 4746), (Start: 84 @4830 has 7 MA's), (107, 4887), (129, 4998), (137, 5058),

Gene: Microdon_57 Start: 42516, Stop: 42818, Start Num: 65

Candidate Starts for Microdon_57:

(44, 42390), (54, 42465), (Start: 65 @42516 has 5 MA's), (82, 42564), (107, 42627), (131, 42759), (138, 42813),

Gene: Mischief19_73 Start: 61963, Stop: 62172, Start Num: 101

Candidate Starts for Mischief19_73:

(Start: 101 @61963 has 1 MA's),

Gene: MmasiCarm_90 Start: 63688, Stop: 63476, Start Num: 95

Candidate Starts for MmasiCarm_90:

(Start: 76 @63733 has 7 MA's), (Start: 95 @63688 has 66 MA's), (Start: 104 @63670 has 12 MA's),
(Start: 110 @63640 has 2 MA's), (122, 63583), (124, 63565),

Gene: Mortcellus_89 Start: 64408, Stop: 64214, Start Num: 104

Candidate Starts for Mortcellus_89:

(Start: 76 @64471 has 7 MA's), (Start: 95 @64426 has 66 MA's), (Start: 104 @64408 has 12 MA's),
(Start: 110 @64378 has 2 MA's), (122, 64321), (124, 64303),

Gene: Morty007_86 Start: 63672, Stop: 63460, Start Num: 92

Candidate Starts for Morty007_86:

(Start: 72 @63711 has 1 MA's), (Start: 92 @63672 has 7 MA's), (122, 63567), (124, 63549), (127,
63540), (135, 63486),

Gene: Mufasa8_58 Start: 41034, Stop: 41228, Start Num: 104

Candidate Starts for Mufasa8_58:

(Start: 104 @41034 has 12 MA's),

Gene: Neos5_87 Start: 63173, Stop: 62922, Start Num: 72

Candidate Starts for Neos5_87:

(Start: 72 @63173 has 1 MA's), (Start: 92 @63134 has 7 MA's), (122, 63029), (124, 63011), (127,
63002), (135, 62948),

Gene: NosilaM_8 Start: 5367, Stop: 5606, Start Num: 84

Candidate Starts for NosilaM_8:

(48, 5232), (49, 5235), (57, 5289), (Start: 84 @5367 has 7 MA's), (Start: 87 @5373 has 8 MA's), (107,
5424), (129, 5535), (137, 5595),

Gene: Nozo_89 Start: 64068, Stop: 63856, Start Num: 95

Candidate Starts for Nozo_89:

(Start: 72 @64122 has 1 MA's), (Start: 76 @64113 has 7 MA's), (Start: 95 @64068 has 66 MA's),
(Start: 104 @64050 has 12 MA's), (Start: 110 @64020 has 2 MA's), (122, 63963), (124, 63945),

Gene: Obutu_91 Start: 63871, Stop: 63659, Start Num: 95

Candidate Starts for Obutu_91:

(Start: 76 @63916 has 7 MA's), (Start: 95 @63871 has 66 MA's), (Start: 104 @63853 has 12 MA's),
(Start: 110 @63823 has 2 MA's), (122, 63766), (124, 63748),

Gene: Opia_73 Start: 59301, Stop: 59056, Start Num: 87

Candidate Starts for Opia_73:

(35, 59538), (38, 59514), (60, 59376), (Start: 87 @59301 has 8 MA's), (Start: 95 @59280 has 66 MA's),
(111, 59226), (131, 59121), (133, 59106),

Gene: OrangeOswald_88 Start: 63303, Stop: 63091, Start Num: 95

Candidate Starts for OrangeOswald_88:

(Start: 76 @63348 has 7 MA's), (Start: 95 @63303 has 66 MA's), (Start: 104 @63285 has 12 MA's),
(Start: 110 @63255 has 2 MA's), (122, 63198), (124, 63180),

Gene: Ottawa_35 Start: 14503, Stop: 14694, Start Num: 104

Candidate Starts for Ottawa_35:

(Start: 104 @14503 has 12 MA's), (107, 14515),

Gene: Outis_7 Start: 4521, Stop: 4760, Start Num: 84

Candidate Starts for Outis_7:

(49, 4383), (57, 4437), (Start: 84 @4521 has 7 MA's), (107, 4578), (129, 4689), (137, 4749),

Gene: Patio_12 Start: 7018, Stop: 7272, Start Num: 76

Candidate Starts for Patio_12:

(22, 6598), (31, 6781), (Start: 69 @6997 has 1 MA's), (70, 7000), (Start: 76 @7018 has 7 MA's), (112, 7114), (115, 7132), (133, 7234), (137, 7261),

Gene: Phaedrus_84 Start: 62701, Stop: 62507, Start Num: 104

Candidate Starts for Phaedrus_84:

(Start: 76 @62764 has 7 MA's), (Start: 95 @62719 has 66 MA's), (Start: 104 @62701 has 12 MA's), (Start: 110 @62671 has 2 MA's), (122, 62614), (124, 62596),

Gene: Phantasmagoria_71 Start: 59269, Stop: 59045, Start Num: 95

Candidate Starts for Phantasmagoria_71:

(35, 59527), (38, 59503), (60, 59365), (Start: 87 @59290 has 8 MA's), (Start: 95 @59269 has 66 MA's), (111, 59215), (131, 59110), (133, 59095),

Gene: Phayeta_92 Start: 63775, Stop: 63563, Start Num: 92

Candidate Starts for Phayeta_92:

(Start: 72 @63814 has 1 MA's), (Start: 92 @63775 has 7 MA's), (122, 63670), (124, 63652), (127, 63643), (135, 63589),

Gene: Philly_88 Start: 63149, Stop: 62937, Start Num: 95

Candidate Starts for Philly_88:

(Start: 72 @63203 has 1 MA's), (Start: 76 @63194 has 7 MA's), (Start: 95 @63149 has 66 MA's), (Start: 104 @63131 has 12 MA's), (Start: 110 @63101 has 2 MA's), (122, 63044), (124, 63026),

Gene: Phlyer_89 Start: 63966, Stop: 63802, Start Num: 110

Candidate Starts for Phlyer_89:

(Start: 76 @64059 has 7 MA's), (Start: 95 @64014 has 66 MA's), (Start: 104 @63996 has 12 MA's), (Start: 110 @63966 has 2 MA's), (122, 63909), (124, 63891),

Gene: Phomeo_8 Start: 5406, Stop: 5609, Start Num: 98

Candidate Starts for Phomeo_8:

(48, 5244), (49, 5247), (80, 5364), (98, 5406), (125, 5520), (129, 5535), (137, 5595),

Gene: Pupper_186 Start: 133528, Stop: 133761, Start Num: 95

Candidate Starts for Pupper_186:

(Start: 95 @133528 has 66 MA's), (128, 133669), (130, 133678), (134, 133711),

Gene: Quenya_29 Start: 23125, Stop: 22928, Start Num: 99

Candidate Starts for Quenya_29:

(34, 23398), (39, 23365), (43, 23341), (47, 23308), (50, 23287), (52, 23275), (57, 23245), (Start: 69 @23200 has 1 MA's), (83, 23161), (Start: 99 @23125 has 19 MA's), (Start: 103 @23119 has 10 MA's), (115, 23065), (127, 23008), (138, 22933),

Gene: Qyrzula_65 Start: 59423, Stop: 59178, Start Num: 87

Candidate Starts for Qyrzula_65:

(35, 59660), (38, 59636), (60, 59498), (Start: 87 @59423 has 8 MA's), (Start: 95 @59402 has 66 MA's), (111, 59348), (131, 59243), (133, 59228),

Gene: RagingRooster_88 Start: 62994, Stop: 62782, Start Num: 95

Candidate Starts for RagingRooster_88:

(Start: 76 @63039 has 7 MA's), (Start: 95 @62994 has 66 MA's), (Start: 104 @62976 has 12 MA's),
(Start: 110 @62946 has 2 MA's), (122, 62889), (124, 62871),

Gene: RainyPolka_66 Start: 52034, Stop: 52246, Start Num: 95

Candidate Starts for RainyPolka_66:

(73, 51998), (Start: 95 @52034 has 66 MA's), (106, 52058), (122, 52136),

Gene: RedRaider_12 Start: 6444, Stop: 6698, Start Num: 76

Candidate Starts for RedRaider_12:

(31, 6201), (Start: 69 @6423 has 1 MA's), (70, 6426), (Start: 76 @6444 has 7 MA's), (133, 6660), (137, 6687),

Gene: Rhinoforte_72 Start: 59307, Stop: 59083, Start Num: 95

Candidate Starts for Rhinoforte_72:

(35, 59565), (38, 59541), (60, 59403), (Start: 87 @59328 has 8 MA's), (Start: 95 @59307 has 66 MA's),
(111, 59253), (131, 59148), (133, 59133),

Gene: Rita1961_90 Start: 63645, Stop: 63433, Start Num: 95

Candidate Starts for Rita1961_90:

(Start: 72 @63699 has 1 MA's), (Start: 76 @63690 has 7 MA's), (Start: 95 @63645 has 66 MA's),
(Start: 104 @63627 has 12 MA's), (Start: 110 @63597 has 2 MA's), (122, 63540), (124, 63522),

Gene: Rizwana_57 Start: 42532, Stop: 42281, Start Num: 87

Candidate Starts for Rizwana_57:

(49, 42676), (Start: 87 @42532 has 8 MA's), (112, 42454), (116, 42433),

Gene: Rollins_27 Start: 20951, Stop: 20703, Start Num: 77

Candidate Starts for Rollins_27:

(Start: 67 @20978 has 1 MA's), (75, 20954), (Start: 77 @20951 has 6 MA's), (Start: 86 @20930 has 2 MA's),
(Start: 102 @20894 has 1 MA's), (107, 20882), (115, 20840),

Gene: RomaT_89 Start: 63868, Stop: 63656, Start Num: 95

Candidate Starts for RomaT_89:

(Start: 76 @63913 has 7 MA's), (Start: 95 @63868 has 66 MA's), (Start: 104 @63850 has 12 MA's),
(Start: 110 @63820 has 2 MA's), (122, 63763), (124, 63745),

Gene: Rona_28 Start: 23304, Stop: 23113, Start Num: 103

Candidate Starts for Rona_28:

(Start: 99 @23310 has 19 MA's), (Start: 103 @23304 has 10 MA's), (115, 23250), (138, 23118),

Gene: Rosebush_70 Start: 59374, Stop: 59150, Start Num: 95

Candidate Starts for Rosebush_70:

(35, 59632), (38, 59608), (60, 59470), (Start: 87 @59395 has 8 MA's), (Start: 95 @59374 has 66 MA's),
(111, 59320), (131, 59215), (133, 59200),

Gene: SCentae_185 Start: 133720, Stop: 133953, Start Num: 95

Candidate Starts for SCentae_185:

(Start: 95 @133720 has 66 MA's), (128, 133861), (130, 133870), (134, 133903),

Gene: Sabella_72 Start: 59209, Stop: 58985, Start Num: 95

Candidate Starts for Sabella_72:

(35, 59467), (38, 59443), (60, 59305), (Start: 87 @59230 has 8 MA's), (Start: 95 @59209 has 66 MA's), (111, 59155), (131, 59050), (133, 59035),

Gene: Salete_67 Start: 52550, Stop: 52762, Start Num: 95

Candidate Starts for Salete_67:

(60, 52457), (Start: 95 @52550 has 66 MA's), (106, 52574), (107, 52577), (122, 52652), (132, 52712), (138, 52757),

Gene: SanaSana_34 Start: 24486, Stop: 24289, Start Num: 99

Candidate Starts for SanaSana_34:

(Start: 99 @24486 has 19 MA's), (Start: 103 @24480 has 10 MA's), (115, 24426),

Gene: Sharkboy_29 Start: 23394, Stop: 23197, Start Num: 99

Candidate Starts for Sharkboy_29:

(Start: 99 @23394 has 19 MA's), (Start: 103 @23388 has 10 MA's), (115, 23334), (127, 23277), (138, 23202),

Gene: Shatter_72 Start: 54547, Stop: 54353, Start Num: 99

Candidate Starts for Shatter_72:

(Start: 99 @54547 has 19 MA's), (115, 54493),

Gene: SilentRX_55 Start: 41558, Stop: 41322, Start Num: 86

Candidate Starts for SilentRX_55:

(Start: 86 @41558 has 2 MA's), (108, 41507), (Start: 110 @41498 has 2 MA's), (117, 41459), (121, 41444),

Gene: Sisko_72 Start: 55626, Stop: 55426, Start Num: 99

Candidate Starts for Sisko_72:

(68, 55698), (Start: 81 @55662 has 2 MA's), (Start: 99 @55626 has 19 MA's),

Gene: Skylord_27 Start: 20825, Stop: 20634, Start Num: 102

Candidate Starts for Skylord_27:

(Start: 67 @20909 has 1 MA's), (75, 20885), (Start: 77 @20882 has 6 MA's), (Start: 86 @20861 has 2 MA's), (Start: 102 @20825 has 1 MA's), (107, 20813), (115, 20771),

Gene: Skysand_11 Start: 6344, Stop: 6598, Start Num: 76

Candidate Starts for Skysand_11:

(22, 5924), (31, 6107), (58, 6293), (Start: 69 @6323 has 1 MA's), (70, 6326), (Start: 76 @6344 has 7 MA's), (112, 6440), (115, 6458), (133, 6560), (137, 6587),

Gene: SlippinJimmy_92 Start: 64660, Stop: 64466, Start Num: 104

Candidate Starts for SlippinJimmy_92:

(Start: 76 @64723 has 7 MA's), (Start: 95 @64678 has 66 MA's), (Start: 104 @64660 has 12 MA's), (Start: 110 @64630 has 2 MA's), (122, 64573), (124, 64555),

Gene: Sonali_57 Start: 42711, Stop: 42905, Start Num: 104

Candidate Starts for Sonali_57:

(Start: 76 @42645 has 7 MA's), (Start: 104 @42711 has 12 MA's), (107, 42723), (122, 42798), (123, 42810),

Gene: Sour_71 Start: 56576, Stop: 56373, Start Num: 99

Candidate Starts for Sour_71:

(29, 56897), (30, 56873), (53, 56717), (68, 56651), (78, 56624), (Start: 81 @56615 has 2 MA's), (Start: 99 @56576 has 19 MA's), (Start: 104 @56564 has 12 MA's), (107, 56552), (115, 56510),

Gene: StarStruck_7 Start: 4521, Stop: 4760, Start Num: 84

Candidate Starts for StarStruck_7:

(49, 4383), (57, 4437), (Start: 84 @4521 has 7 MA's), (107, 4578), (129, 4689), (137, 4749),

Gene: Stoor_32 Start: 24148, Stop: 23957, Start Num: 103

Candidate Starts for Stoor_32:

(Start: 99 @24154 has 19 MA's), (Start: 103 @24148 has 10 MA's), (115, 24094),

Gene: Stromboli_32 Start: 24014, Stop: 23823, Start Num: 103

Candidate Starts for Stromboli_32:

(Start: 99 @24020 has 19 MA's), (Start: 103 @24014 has 10 MA's), (115, 23960),

Gene: Stuff_57 Start: 42753, Stop: 43055, Start Num: 65

Candidate Starts for Stuff_57:

(1, 41424), (2, 41664), (3, 41733), (4, 41811), (5, 41907), (6, 41916), (7, 42129), (8, 42153), (9, 42168), (10, 42183), (11, 42207), (14, 42255), (17, 42300), (23, 42369), (24, 42387), (44, 42627), (54, 42702), (Start: 65 @42753 has 5 MA's), (82, 42801), (107, 42864), (131, 42996), (138, 43050),

Gene: Sunshine23_58 Start: 42392, Stop: 42586, Start Num: 104

Candidate Starts for Sunshine23_58:

(Start: 76 @42326 has 7 MA's), (Start: 104 @42392 has 12 MA's), (107, 42404), (113, 42434), (122, 42479), (123, 42491),

Gene: SuperSulley_7 Start: 4607, Stop: 4846, Start Num: 84

Candidate Starts for SuperSulley_7:

(26, 4253), (48, 4472), (49, 4475), (57, 4529), (Start: 84 @4607 has 7 MA's), (Start: 87 @4613 has 8 MA's), (107, 4664), (129, 4775), (137, 4835),

Gene: SwainyDoc_89 Start: 63493, Stop: 63281, Start Num: 92

Candidate Starts for SwainyDoc_89:

(Start: 72 @63532 has 1 MA's), (Start: 92 @63493 has 7 MA's), (122, 63388), (124, 63370), (127, 63361), (135, 63307),

Gene: SynergyX_89 Start: 63305, Stop: 63093, Start Num: 95

Candidate Starts for SynergyX_89:

(Start: 76 @63350 has 7 MA's), (Start: 95 @63305 has 66 MA's), (Start: 104 @63287 has 12 MA's), (Start: 110 @63257 has 2 MA's), (122, 63200), (124, 63182),

Gene: TA17A_72 Start: 59217, Stop: 58993, Start Num: 95

Candidate Starts for TA17A_72:

(35, 59475), (38, 59451), (60, 59313), (Start: 87 @59238 has 8 MA's), (Start: 95 @59217 has 66 MA's), (111, 59163), (131, 59058), (133, 59043),

Gene: TP1604_67 Start: 52475, Stop: 52687, Start Num: 95

Candidate Starts for TP1604_67:

(60, 52382), (Start: 95 @52475 has 66 MA's), (122, 52577), (132, 52637), (138, 52682),

Gene: Tank_57 Start: 42579, Stop: 42322, Start Num: 87

Candidate Starts for Tank_57:

(Start: 87 @42579 has 8 MA's), (100, 42549), (112, 42501), (116, 42480),

Gene: Thonko_92 Start: 64640, Stop: 64431, Start Num: 91

Candidate Starts for Thonko_92:

(Start: 91 @64640 has 1 MA's), (132, 64478),

Gene: Tinciduntolum_73 Start: 59376, Stop: 59152, Start Num: 95

Candidate Starts for Tinciduntolum_73:

(35, 59634), (38, 59610), (60, 59472), (Start: 87 @59397 has 8 MA's), (Start: 95 @59376 has 66 MA's), (111, 59322), (131, 59217), (133, 59202),

Gene: TinyTerror_90 Start: 63710, Stop: 63516, Start Num: 104

Candidate Starts for TinyTerror_90:

(Start: 72 @63782 has 1 MA's), (Start: 76 @63773 has 7 MA's), (Start: 95 @63728 has 66 MA's), (Start: 104 @63710 has 12 MA's), (Start: 110 @63680 has 2 MA's), (122, 63623), (124, 63605),

Gene: Tres_72 Start: 59230, Stop: 59006, Start Num: 95

Candidate Starts for Tres_72:

(35, 59488), (38, 59464), (60, 59326), (Start: 87 @59251 has 8 MA's), (Start: 95 @59230 has 66 MA's), (131, 59071), (133, 59056),

Gene: Turuncu_9 Start: 4891, Stop: 5145, Start Num: 76

Candidate Starts for Turuncu_9:

(Start: 76 @4891 has 7 MA's), (79, 4894), (90, 4927), (109, 4975), (133, 5107), (137, 5134),

Gene: Tydolla_85 Start: 63266, Stop: 63072, Start Num: 104

Candidate Starts for Tydolla_85:

(Start: 76 @63329 has 7 MA's), (Start: 95 @63284 has 66 MA's), (Start: 104 @63266 has 12 MA's), (Start: 110 @63236 has 2 MA's), (122, 63179), (124, 63161),

Gene: UNTPL_59 Start: 42784, Stop: 43086, Start Num: 65

Candidate Starts for UNTPL_59:

(1, 41455), (2, 41695), (3, 41764), (4, 41842), (5, 41938), (6, 41947), (7, 42160), (8, 42184), (9, 42199), (10, 42214), (13, 42271), (23, 42400), (24, 42418), (44, 42658), (54, 42733), (Start: 65 @42784 has 5 MA's), (82, 42832), (107, 42895), (131, 43027), (138, 43081),

Gene: Vic9_75 Start: 60073, Stop: 59849, Start Num: 95

Candidate Starts for Vic9_75:

(35, 60331), (38, 60307), (60, 60169), (Start: 87 @60094 has 8 MA's), (Start: 95 @60073 has 66 MA's), (111, 60019), (131, 59914), (133, 59899),

Gene: Vitas_27 Start: 20918, Stop: 20643, Start Num: 67

Candidate Starts for Vitas_27:

(Start: 67 @20918 has 1 MA's), (75, 20894), (Start: 77 @20891 has 6 MA's), (Start: 86 @20870 has 2 MA's), (Start: 102 @20834 has 1 MA's), (107, 20822), (115, 20780),

Gene: WalkingDead_32 Start: 24254, Stop: 24063, Start Num: 103

Candidate Starts for WalkingDead_32:

(Start: 99 @24260 has 19 MA's), (Start: 103 @24254 has 10 MA's), (115, 24200),

Gene: West99_72 Start: 59407, Stop: 59183, Start Num: 95

Candidate Starts for West99_72:

(35, 59665), (38, 59641), (60, 59503), (Start: 87 @59428 has 8 MA's), (Start: 95 @59407 has 66 MA's), (131, 59248), (133, 59233),

Gene: Wilde_59 Start: 42878, Stop: 42621, Start Num: 87
Candidate Starts for Wilde_59:
(Start: 87 @42878 has 8 MA's), (100, 42848), (112, 42800), (116, 42779),

Gene: Wooper_75 Start: 55974, Stop: 55744, Start Num: 89
Candidate Starts for Wooper_75:
(18, 56484), (20, 56472), (37, 56196), (39, 56187), (41, 56172), (45, 56145), (50, 56109), (59, 56052),
(61, 56049), (Start: 89 @55974 has 2 MA's), (94, 55962), (137, 55755),

Gene: Xkcd426_72 Start: 59054, Stop: 59275, Start Num: 95
Candidate Starts for Xkcd426_72:
(Start: 95 @59054 has 66 MA's), (97, 59057), (122, 59153), (128, 59183),

Gene: YDN12_68 Start: 52246, Stop: 52458, Start Num: 95
Candidate Starts for YDN12_68:
(60, 52153), (Start: 95 @52246 has 66 MA's), (106, 52270), (122, 52348), (132, 52408), (138, 52453),

Gene: Yahalom_87 Start: 63111, Stop: 62899, Start Num: 95
Candidate Starts for Yahalom_87:
(Start: 76 @63156 has 7 MA's), (Start: 95 @63111 has 66 MA's), (Start: 104 @63093 has 12 MA's),
(Start: 110 @63063 has 2 MA's), (122, 63006), (124, 62988),

Gene: Yeshua_75 Start: 55939, Stop: 55721, Start Num: 94
Candidate Starts for Yeshua_75:
(18, 56464), (20, 56452), (37, 56176), (39, 56167), (41, 56152), (45, 56125), (50, 56089), (59, 56032),
(61, 56029), (74, 55987), (Start: 89 @55951 has 2 MA's), (94, 55939), (137, 55732),

Gene: Yinz_87 Start: 62651, Stop: 62439, Start Num: 92
Candidate Starts for Yinz_87:
(Start: 72 @62690 has 1 MA's), (Start: 92 @62651 has 7 MA's), (122, 62546), (124, 62528), (127,
62519), (135, 62465),