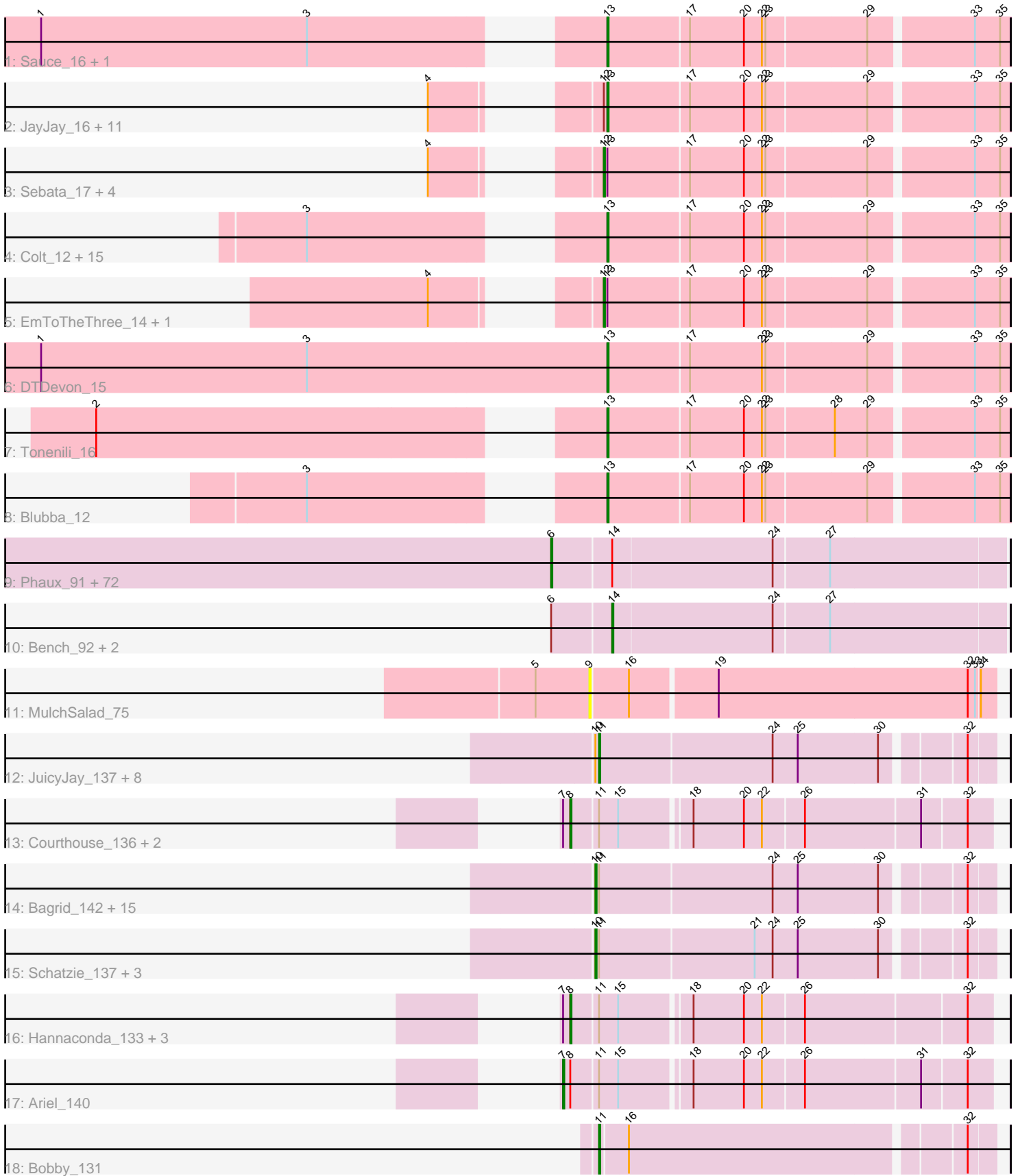


Pham 202733



Note: Tracks are now grouped by subcluster and scaled. Switching in subcluster is indicated by changes in track color. Track scale is now set by default to display the region 30 bp upstream of start 1 to 30 bp downstream of the last possible start. If this default region is judged to be packed too tightly with annotated starts, the track will be further scaled to only show that region of the ORF with annotated starts. This action will be indicated by adding "Zoomed" to the title. For starts, yellow indicates the location of called starts comprised solely of Glimmer/GeneMark auto-annotations, green indicates the location of called starts with at least 1 manual gene annotation.

Pham 202733 Report

This analysis was run 01/18/25 on database version 583.

Pham number 202733 has 155 members, 18 are drafts.

Phages represented in each track:

- Track 1 : Sauce_16, Stubby_11
- Track 2 : JayJay_16, EggyFarm_19, LordLeafolot_20, FrayBell_20, Specks_18, Bigswole_19, JigglyPuff_15, Tainan_20, Dandelion_19, Nappy_16, BigCity_19, QBert_13
- Track 3 : Sebata_17, Grasshills_19, LolaVinca_17, InterFolia_20, LinStu_17
- Track 4 : Colt_12, Bxz1_16, Mangeria_17, Delylah_13, Caravan_13, Lethe_16, Shelob_14, Nidhogg_16, Tyke_16, Naval22_16, Spud_17, Cane17_12, Iota_12, MoMoMixon_16, Pio_17, ErnieJ_13
- Track 5 : EmToTheThree_14, NuevoMundo_18
- Track 6 : DTDevon_15
- Track 7 : Tonenili_16
- Track 8 : Blubba_12
- Track 9 : Phaux_91, Tarkin_88, Terminus_92, Highbury_88, Easy2Say_90, TBrady12_92, Command613_91, ShereKhan_87, Lilpickle_88, Hopey_89, CrystalP_88, Quallification_90, Filch_90, Teaspoon_90, Rakim_90, Mosby_85, Myrale_89, Dusk_86, NelitzaMV_87, Ukulele_84, Pharsalus_86, BugsBunny_89, Czystczon1_90, Misfit_90, Maxxinista_91, Stark_90, ShamWow_89, ChosenOne_89, StellaBean_87, Pumpkin_92, Marshmallow_87, Henry_87, Mindy_88, Tomaszewski_84, Cjw1_89, Goku_88, RiverMonster_89, TeardropMSU_85, Sassay_84, Elite2014_88, Saints25_88, Eureka_88, Youngblood_92, Policronamos_93, Phaja_87, Kostya_89, Kanye_86, SophKB_86, Paperbeatsrock_88, Inca_86, Contagion_85, Xandras_88, Toto_87, Simpliphy_88, DrDrey_89, Murica_92, MadamMonkfish_89, BilboSwaggins_88, FairyPath_89, Murphy_89, StolenFromERC_92, Tuco_90, ABCat_86, Miniwave_84, Lilizi_90, Bruin_86, xkcd_92, Gage_91, Willez_84, Kimchi_93, AmericanBeauty_93, Dumbo_89, IHOP_87
- Track 10 : Bench_92, Palpatine_91, BadStone_86
- Track 11 : MulchSalad_75
- Track 12 : JuicyJay_137, Optimus_132, Duke13_137, Kalah2_132, ThreeRngTarjay_136, Ejimix_134, Dallas_142, Beem_143, Zelink_136
- Track 13 : Courthouse_136, Superphikiman_138, LittleE_143
- Track 14 : Bagrid_142, Bombitas_129, Halley_143, BAKA_141, NihilNomen_143, HokkenD_133, EricMillard_133, Dove_127, Constella_135, Minerva_141, Hughesyang_140, Yeet_134, Pound_129, Klein_139, Redno2_133, Phoebus_141
- Track 15 : Schatzie_137, Wanda_141, Odette_145, DmpstrDiver_142
- Track 16 : Hannaconda_133, KashFlow_138, Omega_148, Gonephishing_134
- Track 17 : Ariel_140

- Track 18 : Bobby_131

Summary of Final Annotations (See graph section above for start numbers):

The start number called the most often in the published annotations is 6, it was called in 69 of the 137 non-draft genes in the pham.

Genes that call this "Most Annotated" start:

- ABCat_86, AmericanBeauty_93, BilboSwaggins_88, Bruin_86, BugsBunny_89, ChosenOne_89, Cjw1_89, Command613_91, Contagion_85, CrystalP_88, Czyszczone1_90, DrDrey_89, Dumbo_89, Dusk_86, Easy2Say_90, Elite2014_88, Eureka_88, FairyPath_89, Filch_90, Gage_91, Goku_88, Henry_87, Highbury_88, Hopey_89, IHOP_87, Inca_86, Kanye_86, Kimchi_93, Kostya_89, Lilizi_90, Lilpickle_88, MadamMonkfish_89, Marshmallow_87, Maxxinista_91, Mindy_88, Miniwave_84, Misfit_90, Mosby_85, Murica_92, Murphy_89, Myrale_89, NelitzaMV_87, Paperbeatsrock_88, Phaja_87, Pharsalus_86, Phaux_91, Policronamos_93, Pumpkin_92, Quallification_90, Rakim_90, RiverMonster_89, Saints25_88, Sassay_84, ShamWow_89, ShereKhan_87, Simpliphy_88, SophKB_86, Stark_90, StellaBean_87, StolenFromERC_92, TBrady12_92, Tarkin_88, TeardropMSU_85, Teaspoon_90, Terminus_92, Tomaszewski_84, Toto_87, Tucu_90, Ukulele_84, Willez_84, Xandras_88, Youngblood_92, xkcd_92,

Genes that have the "Most Annotated" start but do not call it:

- BadStone_86, Bench_92, Palpatine_91,

Genes that do not have the "Most Annotated" start:

- Ariel_140, BAKA_141, Bagrid_142, Beem_143, BigCity_19, Bigswole_19, Blubba_12, Bobby_131, Bombitas_129, Bxz1_16, Cane17_12, Caravan_13, Colt_12, Constella_135, Courthouse_136, DTDevon_15, Dallas_142, Dandelion_19, Delylah_13, DmpstrDiver_142, Dove_127, Duke13_137, EggyFarm_19, Ejimix_134, EmToTheThree_14, EricMillard_133, ErnieJ_13, FrayBell_20, Gonephishing_134, Grasshills_19, Halley_143, Hannaconda_133, HokkenD_133, Hughesyang_140, InterFolia_20, Iota_12, JayJay_16, JigglyPuff_15, JuicyJay_137, Kalah2_132, KashFlow_138, Klein_139, Lethe_16, LinStu_17, LittleE_143, LolaVinca_17, LordLeafolot_20, Mangeria_17, Minerva_141, MoMoMixon_16, MulchSalad_75, Nappy_16, Naval22_16, Nidhogg_16, NihilNomen_143, NuevoMundo_18, Odette_145, Omega_148, Optimus_132, Phoebus_141, Pio_17, Pound_129, QBert_13, Redno2_133, Sauce_16, Schatzie_137, Sebata_17, Shelob_14, Specks_18, Spud_17, Stubby_11, Superphikiman_138, Tainan_20, ThreeRngTarjay_136, Tonenili_16, Tyke_16, Wanda_141, Yeet_134, Zelink_136,

Summary by start number:

Start 6:

- Found in 76 of 155 (49.0%) of genes in pham
- Manual Annotations of this start: 69 of 137
- Called 96.1% of time when present
- Phage (with cluster) where this start called: ABCat_86 (E), AmericanBeauty_93 (E), BilboSwaggins_88 (E), Bruin_86 (E), BugsBunny_89 (E), ChosenOne_89 (E), Cjw1_89 (E), Command613_91 (E), Contagion_85 (E), CrystalP_88 (E),

Czyszczone1_90 (E), DrDrey_89 (E), Dumbo_89 (E), Dusk_86 (E), Easy2Say_90 (E), Elite2014_88 (E), Eureka_88 (E), FairyPath_89 (E), Filch_90 (E), Gage_91 (E), Goku_88 (E), Henry_87 (E), Highbury_88 (E), Hopey_89 (E), IHOP_87 (E), Inca_86 (E), Kanye_86 (E), Kimchi_93 (E), Kostya_89 (E), Lilizi_90 (E), Lilipickle_88 (E), MadamMonkfish_89 (E), Marshmallow_87 (E), Maxxinista_91 (E), Mindy_88 (E), Miniwave_84 (E), Misfit_90 (E), Mosby_85 (E), Murica_92 (E), Murphy_89 (E), Myrale_89 (E), NelitzaMV_87 (E), Paperbeatsrock_88 (E), Phaja_87 (E), Pharsalus_86 (E), Phaux_91 (E), Policronamos_93 (E), Pumpkin_92 (E), Qualification_90 (E), Rakim_90 (E), RiverMonster_89 (E), Saints25_88 (E), Sassay_84 (E), ShamWow_89 (E), ShereKhan_87 (E), Simpliphy_88 (E), SophKB_86 (E), Stark_90 (E), StellaBean_87 (E), StolenFromERC_92 (E), TBrady12_92 (E), Tarkin_88 (E), TeardropMSU_85 (E), Teaspoon_90 (E), Terminus_92 (E), Tomaszewski_84 (E), Toto_87 (E), Tuco_90 (E), Ukulele_84 (E), Willez_84 (E), Xandras_88 (E), Youngblood_92 (E), xkcd_92 (E),

Start 7:

- Found in 8 of 155 (5.2%) of genes in pham
- Manual Annotations of this start: 1 of 137
- Called 12.5% of time when present
- Phage (with cluster) where this start called: Ariel_140 (J),

Start 8:

- Found in 8 of 155 (5.2%) of genes in pham
- Manual Annotations of this start: 6 of 137
- Called 87.5% of time when present
- Phage (with cluster) where this start called: Courthouse_136 (J), Gonephishing_134 (J), Hannaconda_133 (J), KashFlow_138 (J), LittleE_143 (J), Omega_148 (J), Superphikiman_138 (J),

Start 9:

- Found in 1 of 155 (0.6%) of genes in pham
- No Manual Annotations of this start.
- Called 100.0% of time when present
- Phage (with cluster) where this start called: MulchSalad_75 (F),

Start 10:

- Found in 29 of 155 (18.7%) of genes in pham
- Manual Annotations of this start: 18 of 137
- Called 69.0% of time when present
- Phage (with cluster) where this start called: BAKA_141 (J), Bagrid_142 (J), Bombitas_129 (J), Constella_135 (J), DmpstrDiver_142 (J), Dove_127 (J), EricMillard_133 (J), Halley_143 (J), HokkenD_133 (J), Hughesyang_140 (J), Klein_139 (J), Minerva_141 (J), NihilNomen_143 (J), Odette_145 (J), Phoebus_141 (J), Pound_129 (J), Redno2_133 (J), Schatzie_137 (J), Wanda_141 (J), Yeet_134 (J),

Start 11:

- Found in 38 of 155 (24.5%) of genes in pham
- Manual Annotations of this start: 10 of 137
- Called 26.3% of time when present
- Phage (with cluster) where this start called: Beem_143 (J), Bobby_131 (J), Dallas_142 (J), Duke13_137 (J), Ejimix_134 (J), JuicyJay_137 (J), Kalah2_132 (J), Optimus_132 (J), ThreeRngTarjay_136 (J), Zelink_136 (J),

Start 12:

- Found in 19 of 155 (12.3%) of genes in pham
- Manual Annotations of this start: 6 of 137
- Called 36.8% of time when present
- Phage (with cluster) where this start called: EmToTheThree_14 (C1), Grasshills_19 (C1), InterFolia_20 (C1), LinStu_17 (C1), LolaVinca_17 (C1), NuevoMundo_18 (C1), Sebata_17 (C1),

Start 13:

- Found in 40 of 155 (25.8%) of genes in pham
- Manual Annotations of this start: 25 of 137
- Called 82.5% of time when present
- Phage (with cluster) where this start called: BigCity_19 (C1), Bigswole_19 (C1), Blubba_12 (C1), Bxz1_16 (C1), Cane17_12 (C1), Caravan_13 (C1), Colt_12 (C1), DTDevon_15 (C1), Dandelion_19 (C1), Delylah_13 (C1), EgggyFarm_19 (C1), ErnieJ_13 (C1), FrayBell_20 (C1), Iota_12 (C1), JayJay_16 (C1), JigglyPuff_15 (C1), Lethe_16 (C1), LordLeafolot_20 (C1), Mangeria_17 (C1), MoMoMixon_16 (C1), Nappy_16 (C1), Naval22_16 (C1), Nidhogg_16 (C1), Pio_17 (C1), QBert_13 (C1), Sauce_16 (C1), Shelob_14 (C1), Specks_18 (C1), Spud_17 (C1), Stubby_11 (C1), Tainan_20 (C1), Tonenili_16 (C1), Tyke_16 (C1),

Start 14:

- Found in 76 of 155 (49.0%) of genes in pham
- Manual Annotations of this start: 2 of 137
- Called 3.9% of time when present
- Phage (with cluster) where this start called: BadStone_86 (E), Bench_92 (E), Palpatine_91 (E),

Summary by clusters:

There are 4 clusters represented in this pham: C1, J, E, F,

Info for manual annotations of cluster C1:

- Start number 12 was manually annotated 6 times for cluster C1.
- Start number 13 was manually annotated 25 times for cluster C1.

Info for manual annotations of cluster E:

- Start number 6 was manually annotated 69 times for cluster E.
- Start number 14 was manually annotated 2 times for cluster E.

Info for manual annotations of cluster J:

- Start number 7 was manually annotated 1 time for cluster J.
- Start number 8 was manually annotated 6 times for cluster J.
- Start number 10 was manually annotated 18 times for cluster J.
- Start number 11 was manually annotated 10 times for cluster J.

Gene Information:

Gene: ABCat_86 Start: 54488, Stop: 54856, Start Num: 6
Candidate Starts for ABCat_86:

(Start: 6 @54488 has 69 MA's), (Start: 14 @54536 has 2 MA's), (24, 54668), (27, 54713),

Gene: AmericanBeauty_93 Start: 54657, Stop: 55025, Start Num: 6

Candidate Starts for AmericanBeauty_93:

(Start: 6 @54657 has 69 MA's), (Start: 14 @54705 has 2 MA's), (24, 54837), (27, 54882),

Gene: Ariel_140 Start: 72314, Stop: 72649, Start Num: 7

Candidate Starts for Ariel_140:

(Start: 7 @72314 has 1 MA's), (Start: 8 @72320 has 6 MA's), (Start: 11 @72341 has 10 MA's), (15, 72356), (18, 72410), (20, 72452), (22, 72467), (26, 72500), (31, 72593), (32, 72629),

Gene: BAKA_141 Start: 75066, Stop: 75377, Start Num: 10

Candidate Starts for BAKA_141:

(Start: 10 @75066 has 18 MA's), (Start: 11 @75069 has 10 MA's), (24, 75210), (25, 75231), (30, 75297), (32, 75357),

Gene: BadStone_86 Start: 54105, Stop: 54425, Start Num: 14

Candidate Starts for BadStone_86:

(Start: 6 @54057 has 69 MA's), (Start: 14 @54105 has 2 MA's), (24, 54237), (27, 54282),

Gene: Bagrid_142 Start: 75761, Stop: 76072, Start Num: 10

Candidate Starts for Bagrid_142:

(Start: 10 @75761 has 18 MA's), (Start: 11 @75764 has 10 MA's), (24, 75905), (25, 75926), (30, 75992), (32, 76052),

Gene: Beem_143 Start: 76667, Stop: 76975, Start Num: 11

Candidate Starts for Beem_143:

(Start: 10 @76664 has 18 MA's), (Start: 11 @76667 has 10 MA's), (24, 76808), (25, 76829), (30, 76895), (32, 76955),

Gene: Bench_92 Start: 54200, Stop: 54520, Start Num: 14

Candidate Starts for Bench_92:

(Start: 6 @54152 has 69 MA's), (Start: 14 @54200 has 2 MA's), (24, 54332), (27, 54377),

Gene: BigCity_19 Start: 6828, Stop: 7148, Start Num: 13

Candidate Starts for BigCity_19:

(4, 6744), (Start: 12 @6825 has 6 MA's), (Start: 13 @6828 has 25 MA's), (17, 6894), (20, 6939), (22, 6954), (23, 6957), (29, 7038), (33, 7119), (35, 7140),

Gene: Bigswole_19 Start: 6258, Stop: 6578, Start Num: 13

Candidate Starts for Bigswole_19:

(4, 6174), (Start: 12 @6255 has 6 MA's), (Start: 13 @6258 has 25 MA's), (17, 6324), (20, 6369), (22, 6384), (23, 6387), (29, 6468), (33, 6549), (35, 6570),

Gene: BilboSwaggins_88 Start: 54454, Stop: 54822, Start Num: 6

Candidate Starts for BilboSwaggins_88:

(Start: 6 @54454 has 69 MA's), (Start: 14 @54502 has 2 MA's), (24, 54634), (27, 54679),

Gene: Blubba_12 Start: 4998, Stop: 5318, Start Num: 13

Candidate Starts for Blubba_12:

(3, 4809), (Start: 13 @4998 has 25 MA's), (17, 5064), (20, 5109), (22, 5124), (23, 5127), (29, 5208), (33, 5289), (35, 5310),

Gene: Bobby_131 Start: 76521, Stop: 76829, Start Num: 11

Candidate Starts for Bobby_131:

(Start: 11 @76521 has 10 MA's), (16, 76542), (32, 76809),

Gene: Bombitas_129 Start: 74075, Stop: 74386, Start Num: 10

Candidate Starts for Bombitas_129:

(Start: 10 @74075 has 18 MA's), (Start: 11 @74078 has 10 MA's), (24, 74219), (25, 74240), (30, 74306), (32, 74366),

Gene: Bruin_86 Start: 53031, Stop: 53399, Start Num: 6

Candidate Starts for Bruin_86:

(Start: 6 @53031 has 69 MA's), (Start: 14 @53079 has 2 MA's), (24, 53211), (27, 53256),

Gene: BugsBunny_89 Start: 54560, Stop: 54928, Start Num: 6

Candidate Starts for BugsBunny_89:

(Start: 6 @54560 has 69 MA's), (Start: 14 @54608 has 2 MA's), (24, 54740), (27, 54785),

Gene: Bxz1_16 Start: 5407, Stop: 5727, Start Num: 13

Candidate Starts for Bxz1_16:

(3, 5218), (Start: 13 @5407 has 25 MA's), (17, 5473), (20, 5518), (22, 5533), (23, 5536), (29, 5617), (33, 5698), (35, 5719),

Gene: Cane17_12 Start: 4998, Stop: 5318, Start Num: 13

Candidate Starts for Cane17_12:

(3, 4809), (Start: 13 @4998 has 25 MA's), (17, 5064), (20, 5109), (22, 5124), (23, 5127), (29, 5208), (33, 5289), (35, 5310),

Gene: Caravan_13 Start: 4155, Stop: 4475, Start Num: 13

Candidate Starts for Caravan_13:

(3, 3966), (Start: 13 @4155 has 25 MA's), (17, 4221), (20, 4266), (22, 4281), (23, 4284), (29, 4365), (33, 4446), (35, 4467),

Gene: ChosenOne_89 Start: 53512, Stop: 53880, Start Num: 6

Candidate Starts for ChosenOne_89:

(Start: 6 @53512 has 69 MA's), (Start: 14 @53560 has 2 MA's), (24, 53692), (27, 53737),

Gene: Cjw1_89 Start: 55207, Stop: 55575, Start Num: 6

Candidate Starts for Cjw1_89:

(Start: 6 @55207 has 69 MA's), (Start: 14 @55255 has 2 MA's), (24, 55387), (27, 55432),

Gene: Colt_12 Start: 5004, Stop: 5324, Start Num: 13

Candidate Starts for Colt_12:

(3, 4815), (Start: 13 @5004 has 25 MA's), (17, 5070), (20, 5115), (22, 5130), (23, 5133), (29, 5214), (33, 5295), (35, 5316),

Gene: Command613_91 Start: 54551, Stop: 54919, Start Num: 6

Candidate Starts for Command613_91:

(Start: 6 @54551 has 69 MA's), (Start: 14 @54599 has 2 MA's), (24, 54731), (27, 54776),

Gene: Constella_135 Start: 75317, Stop: 75628, Start Num: 10

Candidate Starts for Constella_135:

(Start: 10 @75317 has 18 MA's), (Start: 11 @75320 has 10 MA's), (24, 75461), (25, 75482), (30, 75548), (32, 75608),

Gene: Contagion_85 Start: 53312, Stop: 53680, Start Num: 6

Candidate Starts for Contagion_85:

(Start: 6 @53312 has 69 MA's), (Start: 14 @53360 has 2 MA's), (24, 53492), (27, 53537),

Gene: Courthouse_136 Start: 72178, Stop: 72507, Start Num: 8

Candidate Starts for Courthouse_136:

(Start: 7 @72172 has 1 MA's), (Start: 8 @72178 has 6 MA's), (Start: 11 @72199 has 10 MA's), (15, 72214), (18, 72268), (20, 72310), (22, 72325), (26, 72358), (31, 72451), (32, 72487),

Gene: CrystalP_88 Start: 54454, Stop: 54822, Start Num: 6

Candidate Starts for CrystalP_88:

(Start: 6 @54454 has 69 MA's), (Start: 14 @54502 has 2 MA's), (24, 54634), (27, 54679),

Gene: Czyszczone1_90 Start: 54015, Stop: 54383, Start Num: 6

Candidate Starts for Czyszczone1_90:

(Start: 6 @54015 has 69 MA's), (Start: 14 @54063 has 2 MA's), (24, 54195), (27, 54240),

Gene: DTDevon_15 Start: 5028, Stop: 5348, Start Num: 13

Candidate Starts for DTDevon_15:

(1, 4557), (3, 4779), (Start: 13 @5028 has 25 MA's), (17, 5094), (22, 5154), (23, 5157), (29, 5238), (33, 5319), (35, 5340),

Gene: Dallas_142 Start: 76134, Stop: 76442, Start Num: 11

Candidate Starts for Dallas_142:

(Start: 10 @76131 has 18 MA's), (Start: 11 @76134 has 10 MA's), (24, 76275), (25, 76296), (30, 76362), (32, 76422),

Gene: Dandelion_19 Start: 6466, Stop: 6786, Start Num: 13

Candidate Starts for Dandelion_19:

(4, 6382), (Start: 12 @6463 has 6 MA's), (Start: 13 @6466 has 25 MA's), (17, 6532), (20, 6577), (22, 6592), (23, 6595), (29, 6676), (33, 6757), (35, 6778),

Gene: Delylah_13 Start: 4155, Stop: 4475, Start Num: 13

Candidate Starts for Delylah_13:

(3, 3966), (Start: 13 @4155 has 25 MA's), (17, 4221), (20, 4266), (22, 4281), (23, 4284), (29, 4365), (33, 4446), (35, 4467),

Gene: DmpstrDiver_142 Start: 76050, Stop: 76361, Start Num: 10

Candidate Starts for DmpstrDiver_142:

(Start: 10 @76050 has 18 MA's), (Start: 11 @76053 has 10 MA's), (21, 76179), (24, 76194), (25, 76215), (30, 76281), (32, 76341),

Gene: Dove_127 Start: 71649, Stop: 71960, Start Num: 10

Candidate Starts for Dove_127:

(Start: 10 @71649 has 18 MA's), (Start: 11 @71652 has 10 MA's), (24, 71793), (25, 71814), (30, 71880), (32, 71940),

Gene: DrDrey_89 Start: 54934, Stop: 55302, Start Num: 6

Candidate Starts for DrDrey_89:

(Start: 6 @54934 has 69 MA's), (Start: 14 @54982 has 2 MA's), (24, 55114), (27, 55159),

Gene: Duke13_137 Start: 73354, Stop: 73662, Start Num: 11

Candidate Starts for Duke13_137:

(Start: 10 @73351 has 18 MA's), (Start: 11 @73354 has 10 MA's), (24, 73495), (25, 73516), (30, 73582), (32, 73642),

Gene: Dumbo_89 Start: 53414, Stop: 53782, Start Num: 6

Candidate Starts for Dumbo_89:

(Start: 6 @53414 has 69 MA's), (Start: 14 @53462 has 2 MA's), (24, 53594), (27, 53639),

Gene: Dusk_86 Start: 53717, Stop: 54085, Start Num: 6

Candidate Starts for Dusk_86:

(Start: 6 @53717 has 69 MA's), (Start: 14 @53765 has 2 MA's), (24, 53897), (27, 53942),

Gene: Easy2Say_90 Start: 54916, Stop: 55284, Start Num: 6

Candidate Starts for Easy2Say_90:

(Start: 6 @54916 has 69 MA's), (Start: 14 @54964 has 2 MA's), (24, 55096), (27, 55141),

Gene: EggyFarm_19 Start: 6828, Stop: 7148, Start Num: 13

Candidate Starts for EggyFarm_19:

(4, 6744), (Start: 12 @6825 has 6 MA's), (Start: 13 @6828 has 25 MA's), (17, 6894), (20, 6939), (22, 6954), (23, 6957), (29, 7038), (33, 7119), (35, 7140),

Gene: Ejimix_134 Start: 76202, Stop: 76510, Start Num: 11

Candidate Starts for Ejimix_134:

(Start: 10 @76199 has 18 MA's), (Start: 11 @76202 has 10 MA's), (24, 76343), (25, 76364), (30, 76430), (32, 76490),

Gene: Elite2014_88 Start: 53511, Stop: 53879, Start Num: 6

Candidate Starts for Elite2014_88:

(Start: 6 @53511 has 69 MA's), (Start: 14 @53559 has 2 MA's), (24, 53691), (27, 53736),

Gene: EmToTheThree_14 Start: 5539, Stop: 5862, Start Num: 12

Candidate Starts for EmToTheThree_14:

(4, 5458), (Start: 12 @5539 has 6 MA's), (Start: 13 @5542 has 25 MA's), (17, 5608), (20, 5653), (22, 5668), (23, 5671), (29, 5752), (33, 5833), (35, 5854),

Gene: EricMillard_133 Start: 74703, Stop: 75014, Start Num: 10

Candidate Starts for EricMillard_133:

(Start: 10 @74703 has 18 MA's), (Start: 11 @74706 has 10 MA's), (24, 74847), (25, 74868), (30, 74934), (32, 74994),

Gene: ErnieJ_13 Start: 4219, Stop: 4539, Start Num: 13

Candidate Starts for ErnieJ_13:

(3, 4030), (Start: 13 @4219 has 25 MA's), (17, 4285), (20, 4330), (22, 4345), (23, 4348), (29, 4429), (33, 4510), (35, 4531),

Gene: Eureka_88 Start: 54424, Stop: 54792, Start Num: 6

Candidate Starts for Eureka_88:

(Start: 6 @54424 has 69 MA's), (Start: 14 @54472 has 2 MA's), (24, 54604), (27, 54649),

Gene: FairyPath_89 Start: 54630, Stop: 54998, Start Num: 6

Candidate Starts for FairyPath_89:

(Start: 6 @54630 has 69 MA's), (Start: 14 @54678 has 2 MA's), (24, 54810), (27, 54855),

Gene: Filch_90 Start: 53440, Stop: 53808, Start Num: 6

Candidate Starts for Filch_90:

(Start: 6 @53440 has 69 MA's), (Start: 14 @53488 has 2 MA's), (24, 53620), (27, 53665),

Gene: FrayBell_20 Start: 6515, Stop: 6835, Start Num: 13

Candidate Starts for FrayBell_20:

(4, 6431), (Start: 12 @6512 has 6 MA's), (Start: 13 @6515 has 25 MA's), (17, 6581), (20, 6626), (22, 6641), (23, 6644), (29, 6725), (33, 6806), (35, 6827),

Gene: Gage_91 Start: 54158, Stop: 54526, Start Num: 6

Candidate Starts for Gage_91:

(Start: 6 @54158 has 69 MA's), (Start: 14 @54206 has 2 MA's), (24, 54338), (27, 54383),

Gene: Goku_88 Start: 54153, Stop: 54521, Start Num: 6

Candidate Starts for Goku_88:

(Start: 6 @54153 has 69 MA's), (Start: 14 @54201 has 2 MA's), (24, 54333), (27, 54378),

Gene: Gonephishing_134 Start: 72306, Stop: 72635, Start Num: 8

Candidate Starts for Gonephishing_134:

(Start: 7 @72300 has 1 MA's), (Start: 8 @72306 has 6 MA's), (Start: 11 @72327 has 10 MA's), (15, 72342), (18, 72396), (20, 72438), (22, 72453), (26, 72486), (32, 72615),

Gene: Grasshills_19 Start: 6825, Stop: 7148, Start Num: 12

Candidate Starts for Grasshills_19:

(4, 6744), (Start: 12 @6825 has 6 MA's), (Start: 13 @6828 has 25 MA's), (17, 6894), (20, 6939), (22, 6954), (23, 6957), (29, 7038), (33, 7119), (35, 7140),

Gene: Halley_143 Start: 76515, Stop: 76826, Start Num: 10

Candidate Starts for Halley_143:

(Start: 10 @76515 has 18 MA's), (Start: 11 @76518 has 10 MA's), (24, 76659), (25, 76680), (30, 76746), (32, 76806),

Gene: Hannaconda_133 Start: 72520, Stop: 72849, Start Num: 8

Candidate Starts for Hannaconda_133:

(Start: 7 @72514 has 1 MA's), (Start: 8 @72520 has 6 MA's), (Start: 11 @72541 has 10 MA's), (15, 72556), (18, 72610), (20, 72652), (22, 72667), (26, 72700), (32, 72829),

Gene: Henry_87 Start: 53894, Stop: 54262, Start Num: 6

Candidate Starts for Henry_87:

(Start: 6 @53894 has 69 MA's), (Start: 14 @53942 has 2 MA's), (24, 54074), (27, 54119),

Gene: Highbury_88 Start: 53584, Stop: 53952, Start Num: 6

Candidate Starts for Highbury_88:

(Start: 6 @53584 has 69 MA's), (Start: 14 @53632 has 2 MA's), (24, 53764), (27, 53809),

Gene: HokkenD_133 Start: 75399, Stop: 75710, Start Num: 10

Candidate Starts for HokkenD_133:

(Start: 10 @75399 has 18 MA's), (Start: 11 @75402 has 10 MA's), (24, 75543), (25, 75564), (30, 75630), (32, 75690),

Gene: Hopey_89 Start: 54126, Stop: 54494, Start Num: 6

Candidate Starts for Hopey_89:

(Start: 6 @54126 has 69 MA's), (Start: 14 @54174 has 2 MA's), (24, 54306), (27, 54351),

Gene: Hughesyang_140 Start: 76285, Stop: 76596, Start Num: 10
Candidate Starts for Hughesyang_140:
(Start: 10 @76285 has 18 MA's), (Start: 11 @76288 has 10 MA's), (24, 76429), (25, 76450), (30, 76516), (32, 76576),

Gene: IHOP_87 Start: 54057, Stop: 54425, Start Num: 6
Candidate Starts for IHOP_87:
(Start: 6 @54057 has 69 MA's), (Start: 14 @54105 has 2 MA's), (24, 54237), (27, 54282),

Gene: Inca_86 Start: 52546, Stop: 52914, Start Num: 6
Candidate Starts for Inca_86:
(Start: 6 @52546 has 69 MA's), (Start: 14 @52594 has 2 MA's), (24, 52726), (27, 52771),

Gene: InterFolia_20 Start: 6509, Stop: 6832, Start Num: 12
Candidate Starts for InterFolia_20:
(4, 6428), (Start: 12 @6509 has 6 MA's), (Start: 13 @6512 has 25 MA's), (17, 6578), (20, 6623), (22, 6638), (23, 6641), (29, 6722), (33, 6803), (35, 6824),

Gene: Iota_12 Start: 4943, Stop: 5263, Start Num: 13
Candidate Starts for Iota_12:
(3, 4754), (Start: 13 @4943 has 25 MA's), (17, 5009), (20, 5054), (22, 5069), (23, 5072), (29, 5153), (33, 5234), (35, 5255),

Gene: JayJay_16 Start: 5183, Stop: 5503, Start Num: 13
Candidate Starts for JayJay_16:
(4, 5099), (Start: 12 @5180 has 6 MA's), (Start: 13 @5183 has 25 MA's), (17, 5249), (20, 5294), (22, 5309), (23, 5312), (29, 5393), (33, 5474), (35, 5495),

Gene: JigglyPuff_15 Start: 5028, Stop: 5348, Start Num: 13
Candidate Starts for JigglyPuff_15:
(4, 4944), (Start: 12 @5025 has 6 MA's), (Start: 13 @5028 has 25 MA's), (17, 5094), (20, 5139), (22, 5154), (23, 5157), (29, 5238), (33, 5319), (35, 5340),

Gene: JuicyJay_137 Start: 77803, Stop: 78111, Start Num: 11
Candidate Starts for JuicyJay_137:
(Start: 10 @77800 has 18 MA's), (Start: 11 @77803 has 10 MA's), (24, 77944), (25, 77965), (30, 78031), (32, 78091),

Gene: Kalah2_132 Start: 75409, Stop: 75717, Start Num: 11
Candidate Starts for Kalah2_132:
(Start: 10 @75406 has 18 MA's), (Start: 11 @75409 has 10 MA's), (24, 75550), (25, 75571), (30, 75637), (32, 75697),

Gene: Kanye_86 Start: 53641, Stop: 54009, Start Num: 6
Candidate Starts for Kanye_86:
(Start: 6 @53641 has 69 MA's), (Start: 14 @53689 has 2 MA's), (24, 53821), (27, 53866),

Gene: KashFlow_138 Start: 74098, Stop: 74427, Start Num: 8
Candidate Starts for KashFlow_138:
(Start: 7 @74092 has 1 MA's), (Start: 8 @74098 has 6 MA's), (Start: 11 @74119 has 10 MA's), (15, 74134), (18, 74188), (20, 74230), (22, 74245), (26, 74278), (32, 74407),

Gene: Kimchi_93 Start: 54161, Stop: 54529, Start Num: 6

Candidate Starts for Kimchi_93:

(Start: 6 @54161 has 69 MA's), (Start: 14 @54209 has 2 MA's), (24, 54341), (27, 54386),

Gene: Klein_139 Start: 74008, Stop: 74319, Start Num: 10

Candidate Starts for Klein_139:

(Start: 10 @74008 has 18 MA's), (Start: 11 @74011 has 10 MA's), (24, 74152), (25, 74173), (30, 74239), (32, 74299),

Gene: Kostya_89 Start: 54159, Stop: 54527, Start Num: 6

Candidate Starts for Kostya_89:

(Start: 6 @54159 has 69 MA's), (Start: 14 @54207 has 2 MA's), (24, 54339), (27, 54384),

Gene: Lethe_16 Start: 5303, Stop: 5623, Start Num: 13

Candidate Starts for Lethe_16:

(3, 5114), (Start: 13 @5303 has 25 MA's), (17, 5369), (20, 5414), (22, 5429), (23, 5432), (29, 5513), (33, 5594), (35, 5615),

Gene: Lilizi_90 Start: 53623, Stop: 53991, Start Num: 6

Candidate Starts for Lilizi_90:

(Start: 6 @53623 has 69 MA's), (Start: 14 @53671 has 2 MA's), (24, 53803), (27, 53848),

Gene: Lilpickle_88 Start: 53511, Stop: 53879, Start Num: 6

Candidate Starts for Lilpickle_88:

(Start: 6 @53511 has 69 MA's), (Start: 14 @53559 has 2 MA's), (24, 53691), (27, 53736),

Gene: LinStu_17 Start: 5951, Stop: 6274, Start Num: 12

Candidate Starts for LinStu_17:

(4, 5870), (Start: 12 @5951 has 6 MA's), (Start: 13 @5954 has 25 MA's), (17, 6020), (20, 6065), (22, 6080), (23, 6083), (29, 6164), (33, 6245), (35, 6266),

Gene: LittleE_143 Start: 75162, Stop: 75491, Start Num: 8

Candidate Starts for LittleE_143:

(Start: 7 @75156 has 1 MA's), (Start: 8 @75162 has 6 MA's), (Start: 11 @75183 has 10 MA's), (15, 75198), (18, 75252), (20, 75294), (22, 75309), (26, 75342), (31, 75435), (32, 75471),

Gene: LolaVinca_17 Start: 5615, Stop: 5938, Start Num: 12

Candidate Starts for LolaVinca_17:

(4, 5534), (Start: 12 @5615 has 6 MA's), (Start: 13 @5618 has 25 MA's), (17, 5684), (20, 5729), (22, 5744), (23, 5747), (29, 5828), (33, 5909), (35, 5930),

Gene: LordLeafolot_20 Start: 6514, Stop: 6834, Start Num: 13

Candidate Starts for LordLeafolot_20:

(4, 6430), (Start: 12 @6511 has 6 MA's), (Start: 13 @6514 has 25 MA's), (17, 6580), (20, 6625), (22, 6640), (23, 6643), (29, 6724), (33, 6805), (35, 6826),

Gene: MadamMonkfish_89 Start: 53238, Stop: 53606, Start Num: 6

Candidate Starts for MadamMonkfish_89:

(Start: 6 @53238 has 69 MA's), (Start: 14 @53286 has 2 MA's), (24, 53418), (27, 53463),

Gene: Mangeria_17 Start: 5794, Stop: 6114, Start Num: 13

Candidate Starts for Mangeria_17:

(3, 5605), (Start: 13 @5794 has 25 MA's), (17, 5860), (20, 5905), (22, 5920), (23, 5923), (29, 6004), (33, 6085), (35, 6106),

Gene: Marshmallow_87 Start: 54787, Stop: 55155, Start Num: 6

Candidate Starts for Marshmallow_87:

(Start: 6 @54787 has 69 MA's), (Start: 14 @54835 has 2 MA's), (24, 54967), (27, 55012),

Gene: Maxxinista_91 Start: 53884, Stop: 54252, Start Num: 6

Candidate Starts for Maxxinista_91:

(Start: 6 @53884 has 69 MA's), (Start: 14 @53932 has 2 MA's), (24, 54064), (27, 54109),

Gene: Mindy_88 Start: 53060, Stop: 53428, Start Num: 6

Candidate Starts for Mindy_88:

(Start: 6 @53060 has 69 MA's), (Start: 14 @53108 has 2 MA's), (24, 53240), (27, 53285),

Gene: Minerva_141 Start: 75457, Stop: 75768, Start Num: 10

Candidate Starts for Minerva_141:

(Start: 10 @75457 has 18 MA's), (Start: 11 @75460 has 10 MA's), (24, 75601), (25, 75622), (30, 75688), (32, 75748),

Gene: Miniwave_84 Start: 53555, Stop: 53923, Start Num: 6

Candidate Starts for Miniwave_84:

(Start: 6 @53555 has 69 MA's), (Start: 14 @53603 has 2 MA's), (24, 53735), (27, 53780),

Gene: Misfit_90 Start: 55029, Stop: 55397, Start Num: 6

Candidate Starts for Misfit_90:

(Start: 6 @55029 has 69 MA's), (Start: 14 @55077 has 2 MA's), (24, 55209), (27, 55254),

Gene: MoMoMixon_16 Start: 5636, Stop: 5956, Start Num: 13

Candidate Starts for MoMoMixon_16:

(3, 5447), (Start: 13 @5636 has 25 MA's), (17, 5702), (20, 5747), (22, 5762), (23, 5765), (29, 5846), (33, 5927), (35, 5948),

Gene: Mosby_85 Start: 53312, Stop: 53680, Start Num: 6

Candidate Starts for Mosby_85:

(Start: 6 @53312 has 69 MA's), (Start: 14 @53360 has 2 MA's), (24, 53492), (27, 53537),

Gene: MulchSalad_75 Start: 46643, Stop: 46969, Start Num: 9

Candidate Starts for MulchSalad_75:

(5, 46598), (9, 46643), (16, 46673), (19, 46742), (32, 46949), (33, 46955), (34, 46958),

Gene: Murica_92 Start: 54955, Stop: 55323, Start Num: 6

Candidate Starts for Murica_92:

(Start: 6 @54955 has 69 MA's), (Start: 14 @55003 has 2 MA's), (24, 55135), (27, 55180),

Gene: Murphy_89 Start: 54396, Stop: 54764, Start Num: 6

Candidate Starts for Murphy_89:

(Start: 6 @54396 has 69 MA's), (Start: 14 @54444 has 2 MA's), (24, 54576), (27, 54621),

Gene: Myrale_89 Start: 54518, Stop: 54886, Start Num: 6

Candidate Starts for Myrale_89:

(Start: 6 @54518 has 69 MA's), (Start: 14 @54566 has 2 MA's), (24, 54698), (27, 54743),

Gene: Nappy_16 Start: 5341, Stop: 5661, Start Num: 13
Candidate Starts for Nappy_16:
(4, 5257), (Start: 12 @5338 has 6 MA's), (Start: 13 @5341 has 25 MA's), (17, 5407), (20, 5452), (22, 5467), (23, 5470), (29, 5551), (33, 5632), (35, 5653),

Gene: Naval22_16 Start: 5636, Stop: 5956, Start Num: 13
Candidate Starts for Naval22_16:
(3, 5447), (Start: 13 @5636 has 25 MA's), (17, 5702), (20, 5747), (22, 5762), (23, 5765), (29, 5846), (33, 5927), (35, 5948),

Gene: NelitzaMV_87 Start: 53601, Stop: 53969, Start Num: 6
Candidate Starts for NelitzaMV_87:
(Start: 6 @53601 has 69 MA's), (Start: 14 @53649 has 2 MA's), (24, 53781), (27, 53826),

Gene: Nidhogg_16 Start: 5636, Stop: 5956, Start Num: 13
Candidate Starts for Nidhogg_16:
(3, 5447), (Start: 13 @5636 has 25 MA's), (17, 5702), (20, 5747), (22, 5762), (23, 5765), (29, 5846), (33, 5927), (35, 5948),

Gene: NihilNomen_143 Start: 75745, Stop: 76056, Start Num: 10
Candidate Starts for NihilNomen_143:
(Start: 10 @75745 has 18 MA's), (Start: 11 @75748 has 10 MA's), (24, 75889), (25, 75910), (30, 75976), (32, 76036),

Gene: NuevoMundo_18 Start: 6296, Stop: 6619, Start Num: 12
Candidate Starts for NuevoMundo_18:
(4, 6215), (Start: 12 @6296 has 6 MA's), (Start: 13 @6299 has 25 MA's), (17, 6365), (20, 6410), (22, 6425), (23, 6428), (29, 6509), (33, 6590), (35, 6611),

Gene: Odette_145 Start: 77888, Stop: 78199, Start Num: 10
Candidate Starts for Odette_145:
(Start: 10 @77888 has 18 MA's), (Start: 11 @77891 has 10 MA's), (21, 78017), (24, 78032), (25, 78053), (30, 78119), (32, 78179),

Gene: Omega_148 Start: 76647, Stop: 76976, Start Num: 8
Candidate Starts for Omega_148:
(Start: 7 @76641 has 1 MA's), (Start: 8 @76647 has 6 MA's), (Start: 11 @76668 has 10 MA's), (15, 76683), (18, 76737), (20, 76779), (22, 76794), (26, 76827), (32, 76956),

Gene: Optimus_132 Start: 73028, Stop: 73336, Start Num: 11
Candidate Starts for Optimus_132:
(Start: 10 @73025 has 18 MA's), (Start: 11 @73028 has 10 MA's), (24, 73169), (25, 73190), (30, 73256), (32, 73316),

Gene: Palpatine_91 Start: 55030, Stop: 55350, Start Num: 14
Candidate Starts for Palpatine_91:
(Start: 6 @54982 has 69 MA's), (Start: 14 @55030 has 2 MA's), (24, 55162), (27, 55207),

Gene: Paperbeatsrock_88 Start: 54233, Stop: 54601, Start Num: 6
Candidate Starts for Paperbeatsrock_88:
(Start: 6 @54233 has 69 MA's), (Start: 14 @54281 has 2 MA's), (24, 54413), (27, 54458),

Gene: Phaja_87 Start: 54059, Stop: 54427, Start Num: 6

Candidate Starts for Phaja_87:

(Start: 6 @54059 has 69 MA's), (Start: 14 @54107 has 2 MA's), (24, 54239), (27, 54284),

Gene: Pharsalus_86 Start: 54033, Stop: 54401, Start Num: 6

Candidate Starts for Pharsalus_86:

(Start: 6 @54033 has 69 MA's), (Start: 14 @54081 has 2 MA's), (24, 54213), (27, 54258),

Gene: Phaux_91 Start: 55000, Stop: 55368, Start Num: 6

Candidate Starts for Phaux_91:

(Start: 6 @55000 has 69 MA's), (Start: 14 @55048 has 2 MA's), (24, 55180), (27, 55225),

Gene: Phoebus_141 Start: 77639, Stop: 77950, Start Num: 10

Candidate Starts for Phoebus_141:

(Start: 10 @77639 has 18 MA's), (Start: 11 @77642 has 10 MA's), (24, 77783), (25, 77804), (30, 77870), (32, 77930),

Gene: Pio_17 Start: 5796, Stop: 6116, Start Num: 13

Candidate Starts for Pio_17:

(3, 5607), (Start: 13 @5796 has 25 MA's), (17, 5862), (20, 5907), (22, 5922), (23, 5925), (29, 6006), (33, 6087), (35, 6108),

Gene: Policronamos_93 Start: 55000, Stop: 55368, Start Num: 6

Candidate Starts for Policronamos_93:

(Start: 6 @55000 has 69 MA's), (Start: 14 @55048 has 2 MA's), (24, 55180), (27, 55225),

Gene: Pound_129 Start: 74337, Stop: 74648, Start Num: 10

Candidate Starts for Pound_129:

(Start: 10 @74337 has 18 MA's), (Start: 11 @74340 has 10 MA's), (24, 74481), (25, 74502), (30, 74568), (32, 74628),

Gene: Pumpkin_92 Start: 54652, Stop: 55020, Start Num: 6

Candidate Starts for Pumpkin_92:

(Start: 6 @54652 has 69 MA's), (Start: 14 @54700 has 2 MA's), (24, 54832), (27, 54877),

Gene: QBert_13 Start: 5382, Stop: 5702, Start Num: 13

Candidate Starts for QBert_13:

(4, 5298), (Start: 12 @5379 has 6 MA's), (Start: 13 @5382 has 25 MA's), (17, 5448), (20, 5493), (22, 5508), (23, 5511), (29, 5592), (33, 5673), (35, 5694),

Gene: Quallification_90 Start: 54641, Stop: 55009, Start Num: 6

Candidate Starts for Quallification_90:

(Start: 6 @54641 has 69 MA's), (Start: 14 @54689 has 2 MA's), (24, 54821), (27, 54866),

Gene: Rakim_90 Start: 53970, Stop: 54338, Start Num: 6

Candidate Starts for Rakim_90:

(Start: 6 @53970 has 69 MA's), (Start: 14 @54018 has 2 MA's), (24, 54150), (27, 54195),

Gene: Redno2_133 Start: 73027, Stop: 73338, Start Num: 10

Candidate Starts for Redno2_133:

(Start: 10 @73027 has 18 MA's), (Start: 11 @73030 has 10 MA's), (24, 73171), (25, 73192), (30, 73258), (32, 73318),

Gene: RiverMonster_89 Start: 54172, Stop: 54540, Start Num: 6

Candidate Starts for RiverMonster_89:

(Start: 6 @54172 has 69 MA's), (Start: 14 @54220 has 2 MA's), (24, 54352), (27, 54397),

Gene: Saints25_88 Start: 53584, Stop: 53952, Start Num: 6

Candidate Starts for Saints25_88:

(Start: 6 @53584 has 69 MA's), (Start: 14 @53632 has 2 MA's), (24, 53764), (27, 53809),

Gene: Sassay_84 Start: 52274, Stop: 52642, Start Num: 6

Candidate Starts for Sassay_84:

(Start: 6 @52274 has 69 MA's), (Start: 14 @52322 has 2 MA's), (24, 52454), (27, 52499),

Gene: Sauce_16 Start: 5342, Stop: 5662, Start Num: 13

Candidate Starts for Sauce_16:

(1, 4931), (3, 5153), (Start: 13 @5342 has 25 MA's), (17, 5408), (20, 5453), (22, 5468), (23, 5471), (29, 5552), (33, 5633), (35, 5654),

Gene: Schatzie_137 Start: 76307, Stop: 76618, Start Num: 10

Candidate Starts for Schatzie_137:

(Start: 10 @76307 has 18 MA's), (Start: 11 @76310 has 10 MA's), (21, 76436), (24, 76451), (25, 76472), (30, 76538), (32, 76598),

Gene: Sebata_17 Start: 5951, Stop: 6274, Start Num: 12

Candidate Starts for Sebata_17:

(4, 5870), (Start: 12 @5951 has 6 MA's), (Start: 13 @5954 has 25 MA's), (17, 6020), (20, 6065), (22, 6080), (23, 6083), (29, 6164), (33, 6245), (35, 6266),

Gene: ShamWow_89 Start: 54454, Stop: 54822, Start Num: 6

Candidate Starts for ShamWow_89:

(Start: 6 @54454 has 69 MA's), (Start: 14 @54502 has 2 MA's), (24, 54634), (27, 54679),

Gene: Shelob_14 Start: 5302, Stop: 5622, Start Num: 13

Candidate Starts for Shelob_14:

(3, 5113), (Start: 13 @5302 has 25 MA's), (17, 5368), (20, 5413), (22, 5428), (23, 5431), (29, 5512), (33, 5593), (35, 5614),

Gene: ShereKhan_87 Start: 54566, Stop: 54934, Start Num: 6

Candidate Starts for ShereKhan_87:

(Start: 6 @54566 has 69 MA's), (Start: 14 @54614 has 2 MA's), (24, 54746), (27, 54791),

Gene: Simpliphy_88 Start: 53574, Stop: 53942, Start Num: 6

Candidate Starts for Simpliphy_88:

(Start: 6 @53574 has 69 MA's), (Start: 14 @53622 has 2 MA's), (24, 53754), (27, 53799),

Gene: SophKB_86 Start: 53252, Stop: 53620, Start Num: 6

Candidate Starts for SophKB_86:

(Start: 6 @53252 has 69 MA's), (Start: 14 @53300 has 2 MA's), (24, 53432), (27, 53477),

Gene: Specks_18 Start: 5695, Stop: 6015, Start Num: 13

Candidate Starts for Specks_18:

(4, 5611), (Start: 12 @5692 has 6 MA's), (Start: 13 @5695 has 25 MA's), (17, 5761), (20, 5806), (22, 5821), (23, 5824), (29, 5905), (33, 5986), (35, 6007),

Gene: Spud_17 Start: 5796, Stop: 6116, Start Num: 13

Candidate Starts for Spud_17:

(3, 5607), (Start: 13 @5796 has 25 MA's), (17, 5862), (20, 5907), (22, 5922), (23, 5925), (29, 6006), (33, 6087), (35, 6108),

Gene: Stark_90 Start: 54055, Stop: 54423, Start Num: 6

Candidate Starts for Stark_90:

(Start: 6 @54055 has 69 MA's), (Start: 14 @54103 has 2 MA's), (24, 54235), (27, 54280),

Gene: StellaBean_87 Start: 53778, Stop: 54146, Start Num: 6

Candidate Starts for StellaBean_87:

(Start: 6 @53778 has 69 MA's), (Start: 14 @53826 has 2 MA's), (24, 53958), (27, 54003),

Gene: StolenFromERC_92 Start: 54158, Stop: 54526, Start Num: 6

Candidate Starts for StolenFromERC_92:

(Start: 6 @54158 has 69 MA's), (Start: 14 @54206 has 2 MA's), (24, 54338), (27, 54383),

Gene: Stubby_11 Start: 4534, Stop: 4854, Start Num: 13

Candidate Starts for Stubby_11:

(1, 4123), (3, 4345), (Start: 13 @4534 has 25 MA's), (17, 4600), (20, 4645), (22, 4660), (23, 4663), (29, 4744), (33, 4825), (35, 4846),

Gene: Superphikiman_138 Start: 72460, Stop: 72789, Start Num: 8

Candidate Starts for Superphikiman_138:

(Start: 7 @72454 has 1 MA's), (Start: 8 @72460 has 6 MA's), (Start: 11 @72481 has 10 MA's), (15, 72496), (18, 72550), (20, 72592), (22, 72607), (26, 72640), (31, 72733), (32, 72769),

Gene: TBrady12_92 Start: 53994, Stop: 54362, Start Num: 6

Candidate Starts for TBrady12_92:

(Start: 6 @53994 has 69 MA's), (Start: 14 @54042 has 2 MA's), (24, 54174), (27, 54219),

Gene: Tainan_20 Start: 6514, Stop: 6834, Start Num: 13

Candidate Starts for Tainan_20:

(4, 6430), (Start: 12 @6511 has 6 MA's), (Start: 13 @6514 has 25 MA's), (17, 6580), (20, 6625), (22, 6640), (23, 6643), (29, 6724), (33, 6805), (35, 6826),

Gene: Tarkin_88 Start: 54242, Stop: 54610, Start Num: 6

Candidate Starts for Tarkin_88:

(Start: 6 @54242 has 69 MA's), (Start: 14 @54290 has 2 MA's), (24, 54422), (27, 54467),

Gene: TeardropMSU_85 Start: 53242, Stop: 53610, Start Num: 6

Candidate Starts for TeardropMSU_85:

(Start: 6 @53242 has 69 MA's), (Start: 14 @53290 has 2 MA's), (24, 53422), (27, 53467),

Gene: Teaspoon_90 Start: 54094, Stop: 54462, Start Num: 6

Candidate Starts for Teaspoon_90:

(Start: 6 @54094 has 69 MA's), (Start: 14 @54142 has 2 MA's), (24, 54274), (27, 54319),

Gene: Terminus_92 Start: 55029, Stop: 55397, Start Num: 6

Candidate Starts for Terminus_92:

(Start: 6 @55029 has 69 MA's), (Start: 14 @55077 has 2 MA's), (24, 55209), (27, 55254),

Gene: ThreeRngTarjay_136 Start: 76233, Stop: 76541, Start Num: 11

Candidate Starts for ThreeRngTarjay_136:

(Start: 10 @76230 has 18 MA's), (Start: 11 @76233 has 10 MA's), (24, 76374), (25, 76395), (30, 76461), (32, 76521),

Gene: Tomaszewski_84 Start: 53405, Stop: 53773, Start Num: 6

Candidate Starts for Tomaszewski_84:

(Start: 6 @53405 has 69 MA's), (Start: 14 @53453 has 2 MA's), (24, 53585), (27, 53630),

Gene: Tonenili_16 Start: 4962, Stop: 5282, Start Num: 13

Candidate Starts for Tonenili_16:

(2, 4599), (Start: 13 @4962 has 25 MA's), (17, 5028), (20, 5073), (22, 5088), (23, 5091), (28, 5145), (29, 5172), (33, 5253), (35, 5274),

Gene: Toto_87 Start: 54454, Stop: 54822, Start Num: 6

Candidate Starts for Toto_87:

(Start: 6 @54454 has 69 MA's), (Start: 14 @54502 has 2 MA's), (24, 54634), (27, 54679),

Gene: Tuco_90 Start: 55001, Stop: 55369, Start Num: 6

Candidate Starts for Tuco_90:

(Start: 6 @55001 has 69 MA's), (Start: 14 @55049 has 2 MA's), (24, 55181), (27, 55226),

Gene: Tyke_16 Start: 5272, Stop: 5592, Start Num: 13

Candidate Starts for Tyke_16:

(3, 5083), (Start: 13 @5272 has 25 MA's), (17, 5338), (20, 5383), (22, 5398), (23, 5401), (29, 5482), (33, 5563), (35, 5584),

Gene: Ukulele_84 Start: 53387, Stop: 53755, Start Num: 6

Candidate Starts for Ukulele_84:

(Start: 6 @53387 has 69 MA's), (Start: 14 @53435 has 2 MA's), (24, 53567), (27, 53612),

Gene: Wanda_141 Start: 73937, Stop: 74248, Start Num: 10

Candidate Starts for Wanda_141:

(Start: 10 @73937 has 18 MA's), (Start: 11 @73940 has 10 MA's), (21, 74066), (24, 74081), (25, 74102), (30, 74168), (32, 74228),

Gene: Willez_84 Start: 52274, Stop: 52642, Start Num: 6

Candidate Starts for Willez_84:

(Start: 6 @52274 has 69 MA's), (Start: 14 @52322 has 2 MA's), (24, 52454), (27, 52499),

Gene: Xandras_88 Start: 53486, Stop: 53854, Start Num: 6

Candidate Starts for Xandras_88:

(Start: 6 @53486 has 69 MA's), (Start: 14 @53534 has 2 MA's), (24, 53666), (27, 53711),

Gene: Yeet_134 Start: 75428, Stop: 75739, Start Num: 10

Candidate Starts for Yeet_134:

(Start: 10 @75428 has 18 MA's), (Start: 11 @75431 has 10 MA's), (24, 75572), (25, 75593), (30, 75659), (32, 75719),

Gene: Youngblood_92 Start: 54956, Stop: 55324, Start Num: 6

Candidate Starts for Youngblood_92:

(Start: 6 @54956 has 69 MA's), (Start: 14 @55004 has 2 MA's), (24, 55136), (27, 55181),

Gene: Zelink_136 Start: 76752, Stop: 77060, Start Num: 11

Candidate Starts for Zelink_136:

(Start: 10 @76749 has 18 MA's), (Start: 11 @76752 has 10 MA's), (24, 76893), (25, 76914), (30, 76980), (32, 77040),

Gene: xkcd_92 Start: 55140, Stop: 55508, Start Num: 6

Candidate Starts for xkcd_92:

(Start: 6 @55140 has 69 MA's), (Start: 14 @55188 has 2 MA's), (24, 55320), (27, 55365),