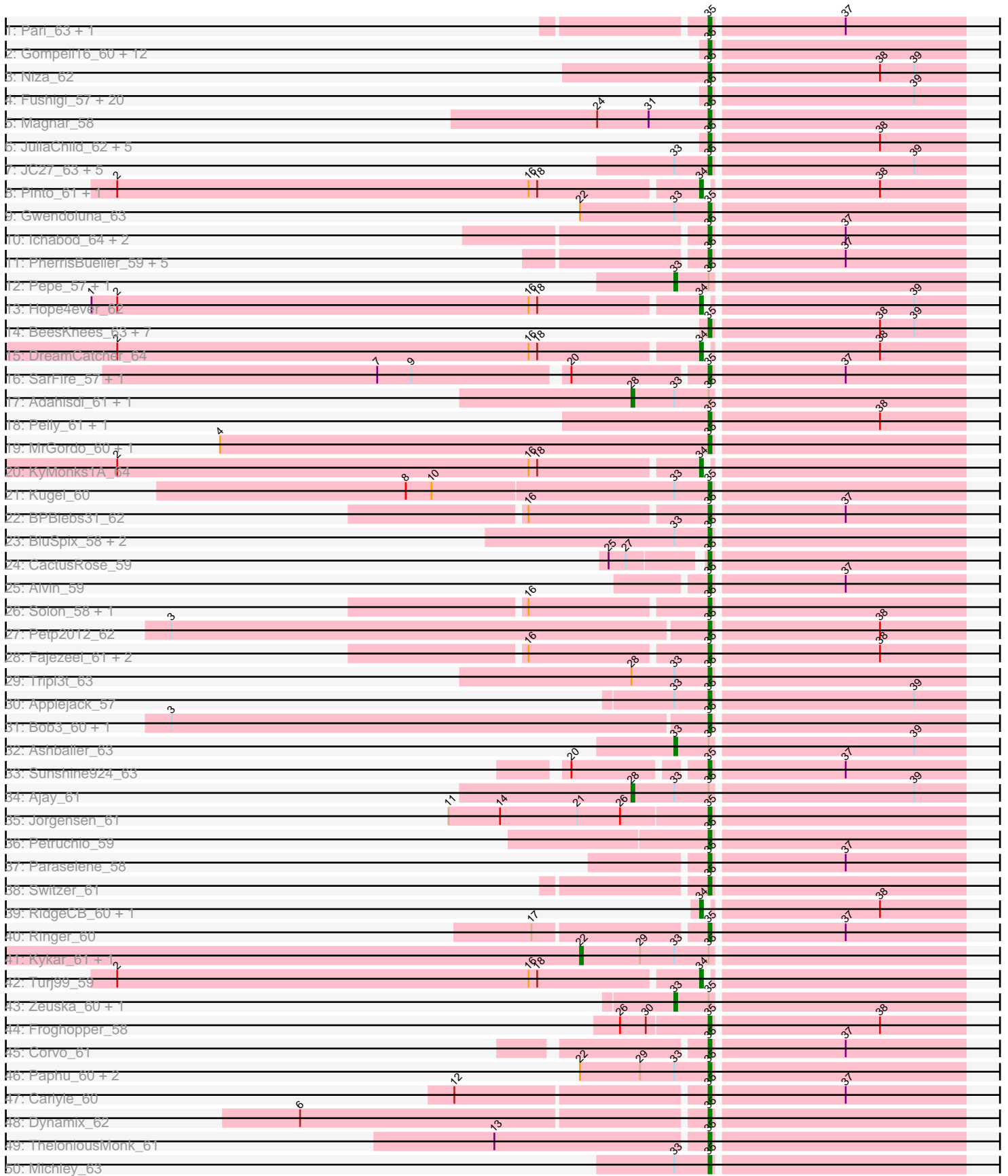
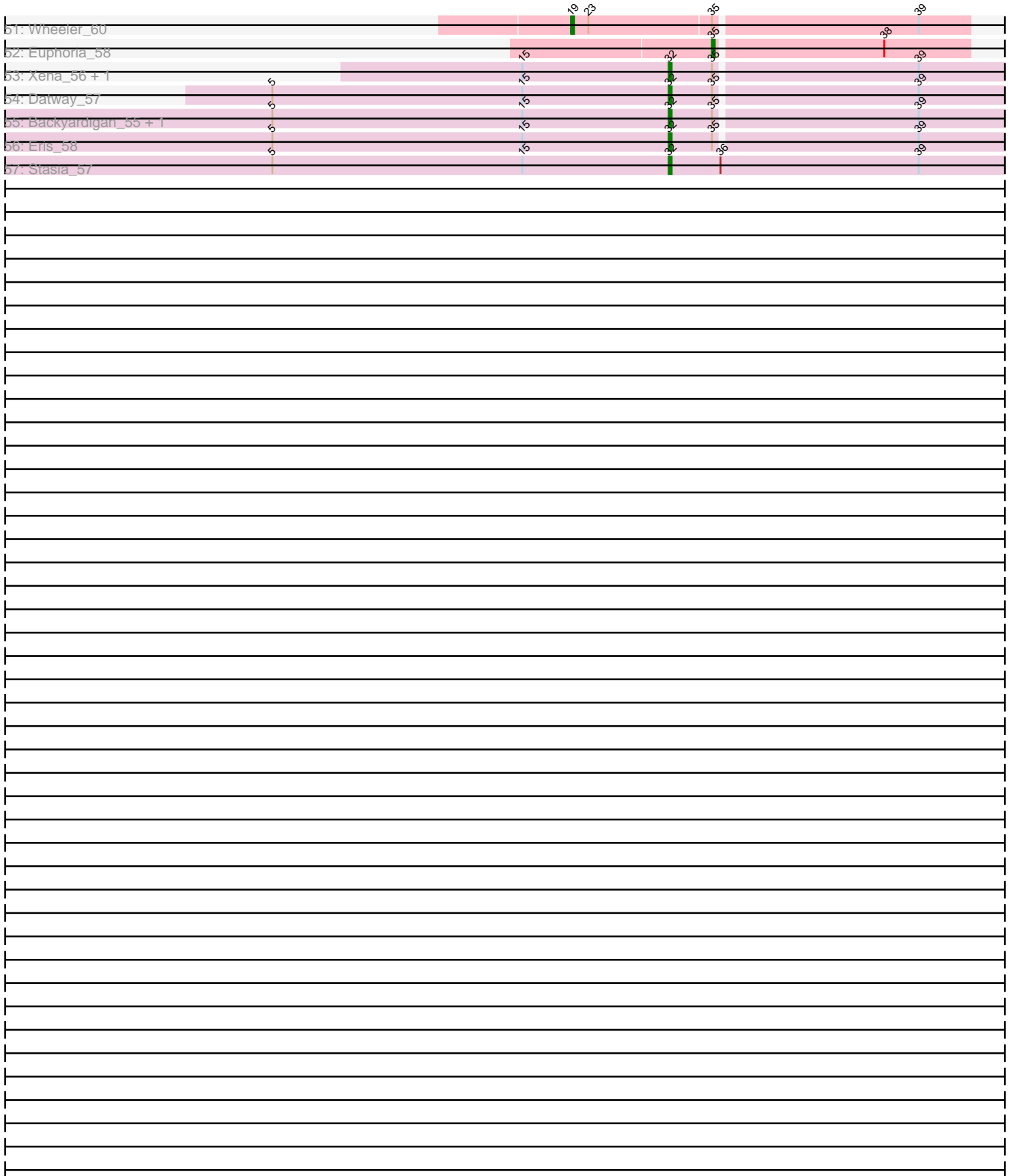


Pham 202765



Pham 202765



Note: Tracks are now grouped by subcluster and scaled. Switching in subcluster is indicated by changes in track color. Track scale is now set by default to display the region 30 bp upstream of start 1 to 30 bp downstream of the last possible start. If this default region is judged to be packed too tightly with annotated starts, the track will be further scaled to only show that region of the ORF with annotated starts. This action will be indicated by adding "Zoomed" to the title. For starts, yellow indicates the location of called starts comprised solely of Glimmer/GeneMark auto-annotations, green indicates the location of called starts with at least 1 manual gene annotation.

Pham 202765 Report

This analysis was run 01/18/25 on database version 583.

Pham number 202765 has 133 members, 1 are drafts.

Phages represented in each track:

- Track 1 : Pari_63, Squee_61
- Track 2 : Gompeii16_60, Bircsak_60, Buttons_58, Nhonho_59, Crispicious1_58, Papez_63, Snazzy_59, Edtherson_60, KSSJEB_61, Ruotula_63, JackSparrow_63, Traft412_63, Mryolo_57
- Track 3 : Niza_62
- Track 4 : Fushigi_57, Licorice_62, Zephyr_62, Ciao_59, Abrogate_600, Marcell_57, Sibs6_63, Kanely_62, PhrostyMug_61, Trouble_62, PattyP_63, Altman_63, Briton15_65, Pippin_61, Watermelon_61, Killigrew_60, Marchy_55, Aeneas_64, Seabiscuit_64, McGuire_62, HanShotFirst_62
- Track 5 : Magnar_58
- Track 6 : JuliaChild_62, Sagefire_63, Swole_62, GrecoEtereo_60, QTRlifeCrisis_61, Tote_57
- Track 7 : JC27_63, Forsytheast_59, Moose_59, SwissCheese_61, Bruns_59, Seanderson_60
- Track 8 : Pinto_61, Rufus_62
- Track 9 : Gwendoluna_63
- Track 10 : Ichabod_64, HermioneGrange_62, MPlant7149_60
- Track 11 : PherrisBueller_59, Scowl_61, Dreamboat_61, Graduation_64, GageAP_61, Makemake_62
- Track 12 : Pepe_57, SkiPole_65
- Track 13 : Hope4ever_62
- Track 14 : BeesKnees_63, PacerPaul_60, Zeeculate_58, Francis47_59, Marsha_60, ConceptII_63, Nerujay_63, Gandalf20_63
- Track 15 : DreamCatcher_64
- Track 16 : SarFire_57, Thor_57
- Track 17 : Adahisdi_61, Oogway_60
- Track 18 : Pelly_61, Dexes_60
- Track 19 : MrGordo_60, Big3_59
- Track 20 : KyMonks1A_64
- Track 21 : Kugel_60
- Track 22 : BPBiebs31_62
- Track 23 : BluSpix_58, Eyeball_62, IgnatiusPatJac_60
- Track 24 : CactusRose_59
- Track 25 : Alvin_59
- Track 26 : Solon_58, Lesedi_56
- Track 27 : Petp2012_62
- Track 28 : Fajezeel_61, Acme_62, Greg_61

- Track 29 : Tripl3t_63
- Track 30 : Applejack_57
- Track 31 : Bob3_60, Barriga_62
- Track 32 : Ashballer_63
- Track 33 : Sunshine924_63
- Track 34 : Ajay_61
- Track 35 : Jorgensen_61
- Track 36 : Petruccio_59
- Track 37 : Paraselene_58
- Track 38 : Switzer_61
- Track 39 : RidgeCB_60, Doom_59
- Track 40 : Ringer_60
- Track 41 : Kykar_61, Lamina13_64
- Track 42 : Turj99_59
- Track 43 : Zeuska_60, Teodoridan_58
- Track 44 : Frogopper_58
- Track 45 : Corvo_61
- Track 46 : Paphu_60, Tasp14_64, Parliament_62
- Track 47 : Carlyle_60
- Track 48 : Dynamix_62
- Track 49 : TheloniousMonk_61
- Track 50 : Michley_63
- Track 51 : Wheeler_60
- Track 52 : Euphoria_58
- Track 53 : Xena_56, Noelle_58
- Track 54 : Datway_57
- Track 55 : Backyardigan_55, Bumblebee11_56
- Track 56 : Eris_58
- Track 57 : Stasia_57

Summary of Final Annotations (See graph section above for start numbers):

The start number called the most often in the published annotations is 35, it was called in 107 of the 132 non-draft genes in the pham.

Genes that call this "Most Annotated" start:

- Abrogate_600, Acme_62, Aeneas_64, Altman_63, Alvin_59, Applejack_57, BPBiebs31_62, Barriga_62, BeesKnees_63, Big3_59, Bircsak_60, BluSpix_58, Bob3_60, Briton15_65, Bruns_59, Buttons_58, CactusRose_59, Carlyle_60, Ciao_59, Conceptll_63, Corvo_61, Crispicous1_58, Dexes_60, Dreamboat_61, Dynamix_62, Edtherson_60, Euphoria_58, Eyeball_62, Fajezeel_61, Forsytheast_59, Francis47_59, Frogopper_58, Fushigi_57, GageAP_61, Gandalf20_63, Gompeii16_60, Graduation_64, GrecoEtereo_60, Greg_61, Gwendoluna_63, HanShotFirst_62, HermioneGrange_62, Ichabod_64, IgnatiusPatJac_60, JC27_63, JackSparrow_63, Jorgensen_61, JuliaChild_62, KSSJEB_61, Kanely_62, Killigrew_60, Kugel_60, Lesedi_56, Licorice_62, MPlant7149_60, Magnar_58, Makemake_62, Marcell_57, Marchy_55, Marsha_60, McGuire_62, Michley_63, Moose_59, MrGordo_60, Mryolo_57, Nerujay_63, Nhonho_59, Niza_62, PacerPaul_60, Papez_63, Paphu_60, Paraselene_58, Pari_63, Parliament_62, PattyP_63, Pelly_61, Petp2012_62, Petruccio_59, PherrisBueller_59,

PhrostyMug_61, Pippin_61, QTRlifeCrisis_61, Ringer_60, Ruotula_63, Sagefire_63, SarFire_57, Scowl_61, Seabiscuit_64, Seanderson_60, Sibs6_63, Snazzy_59, Solon_58, Squee_61, Sunshine924_63, SwissCheese_61, Switzer_61, Swole_62, Tasp14_64, TheloniousMonk_61, Thor_57, Tote_57, Traft412_63, Tripl3t_63, Trouble_62, Watermelon_61, Zeeculate_58, Zephyr_62,

Genes that have the "Most Annotated" start but do not call it:

- Adahisdi_61, Ajay_61, Ashballer_63, Backyardigan_55, Bumblebee11_56, Datway_57, Eris_58, Kykar_61, Lamina13_64, Noelle_58, Oogway_60, Pepe_57, SkiPole_65, Teodoridan_58, Wheeler_60, Xena_56, Zeuska_60,

Genes that do not have the "Most Annotated" start:

- Doom_59, DreamCatcher_64, Hope4ever_62, KyMonks1A_64, Pinto_61, RidgeCB_60, Rufus_62, Stasia_57, Turj99_59,

Summary by start number:

Start 19:

- Found in 1 of 133 (0.8%) of genes in pham
- Manual Annotations of this start: 1 of 132
- Called 100.0% of time when present
- Phage (with cluster) where this start called: Wheeler_60 (A1),

Start 22:

- Found in 6 of 133 (4.5%) of genes in pham
- Manual Annotations of this start: 2 of 132
- Called 33.3% of time when present
- Phage (with cluster) where this start called: Kykar_61 (A1), Lamina13_64 (A1),

Start 28:

- Found in 4 of 133 (3.0%) of genes in pham
- Manual Annotations of this start: 3 of 132
- Called 75.0% of time when present
- Phage (with cluster) where this start called: Adahisdi_61 (A1), Ajay_61 (A1), Oogway_60 (A1),

Start 32:

- Found in 7 of 133 (5.3%) of genes in pham
- Manual Annotations of this start: 7 of 132
- Called 100.0% of time when present
- Phage (with cluster) where this start called: Backyardigan_55 (A4), Bumblebee11_56 (A4), Datway_57 (A4), Eris_58 (A4), Noelle_58 (A4), Stasia_57 (A4), Xena_56 (A4),

Start 33:

- Found in 27 of 133 (20.3%) of genes in pham
- Manual Annotations of this start: 4 of 132
- Called 18.5% of time when present
- Phage (with cluster) where this start called: Ashballer_63 (A1), Pepe_57 (A1), SkiPole_65 (A1), Teodoridan_58 (A1), Zeuska_60 (A1),

Start 34:

- Found in 8 of 133 (6.0%) of genes in pham

- Manual Annotations of this start: 8 of 132
- Called 100.0% of time when present
- Phage (with cluster) where this start called: Doom_59 (A1), DreamCatcher_64 (A1), Hope4ever_62 (A1), KyMonks1A_64 (A1), Pinto_61 (A1), RidgeCB_60 (A1), Rufus_62 (A1), Turj99_59 (A1),

Start 35:

- Found in 124 of 133 (93.2%) of genes in pham
- Manual Annotations of this start: 107 of 132
- Called 86.3% of time when present
- Phage (with cluster) where this start called: Abrogate_600 (A1), Acme_62 (A1), Aeneas_64 (A1), Altman_63 (A1), Alvin_59 (A1), Applejack_57 (A1), BPBiebs31_62 (A1), Barriga_62 (A1), BeesKnees_63 (A1), Big3_59 (A1), Bircsak_60 (A1), BluSpix_58 (A1), Bob3_60 (A1), Briton15_65 (A1), Bruns_59 (A1), Buttons_58 (A1), CactusRose_59 (A1), Carlyle_60 (A1), Ciao_59 (A1), ConceptII_63 (A1), Corvo_61 (A1), Crispicous1_58 (A1), Dexes_60 (A1), Dreamboat_61 (A1), Dynamix_62 (A1), Edtherson_60 (A1), Euphoria_58 (A1), Eyeball_62 (A1), Fajezeel_61 (A1), Forsytheast_59 (A1), Francis47_59 (A1), Froghopper_58 (A1), Fushigi_57 (A1), GageAP_61 (A1), Gandalf20_63 (A1), Gompeii16_60 (A1), Graduation_64 (A1), GrecoEtereo_60 (A1), Greg_61 (A1), Gwendoluna_63 (A1), HanShotFirst_62 (A1), HermioneGrange_62 (A1), Ichabod_64 (A1), IgnatiusPatJac_60 (A1), JC27_63 (A1), JackSparrow_63 (A1), Jorgensen_61 (A1), JuliaChild_62 (A1), KSSJEB_61 (A1), Kanely_62 (A1), Killigrew_60 (A1), Kugel_60 (A1), Lesedi_56 (A1), Licorice_62 (A1), MPlant7149_60 (A1), Magnar_58 (A1), Makemake_62 (A1), Marcell_57 (A1), Marchy_55 (A1), Marsha_60 (A1), McGuire_62 (A1), Michley_63 (A1), Moose_59 (A1), MrGordo_60 (A1), Mryolo_57 (A1), Nerujay_63 (A1), Nhonho_59 (A1), Niza_62 (A1), PacerPaul_60 (A1), Papez_63 (A1), Paphu_60 (A1), Paraselene_58 (A1), Pari_63 (A1), Parliament_62 (A1), PattyP_63 (A1), Pelly_61 (A1), Petp2012_62 (A1), Petruccio_59 (A1), PherrisBueller_59 (A1), PhrostyMug_61 (A1), Pippin_61 (A1), QTRLifeCrisis_61 (A1), Ringer_60 (A1), Ruotula_63 (A1), Sagefire_63 (A1), SarFire_57 (A1), Scowl_61 (A1), Seabiscuit_64 (A1), Seanderson_60 (A1), Sibs6_63 (A1), Snazzy_59 (A1), Solon_58 (A1), Squee_61 (A1), Sunshine924_63 (A1), SwissCheese_61 (A1), Switzer_61 (A1), Swole_62 (A1), Tasp14_64 (A1), TheloniousMonk_61 (A1), Thor_57 (A1), Tote_57 (A1), Traft412_63 (A1), Tripl3t_63 (A1), Trouble_62 (A1), Watermelon_61 (A1), Zeeculate_58 (A1), Zephyr_62 (A1),

Summary by clusters:

There are 2 clusters represented in this pham: A1, A4,

Info for manual annotations of cluster A1:

- Start number 19 was manually annotated 1 time for cluster A1.
- Start number 22 was manually annotated 2 times for cluster A1.
- Start number 28 was manually annotated 3 times for cluster A1.
- Start number 33 was manually annotated 4 times for cluster A1.
- Start number 34 was manually annotated 8 times for cluster A1.
- Start number 35 was manually annotated 107 times for cluster A1.

Info for manual annotations of cluster A4:

- Start number 32 was manually annotated 7 times for cluster A4.

Gene Information:

Gene: Abrogate_600 Start: 42412, Stop: 42326, Start Num: 35

Candidate Starts for Abrogate_600:

(Start: 35 @42412 has 107 MA's), (39, 42343),

Gene: Acme_62 Start: 40967, Stop: 40881, Start Num: 35

Candidate Starts for Acme_62:

(16, 41027), (Start: 35 @40967 has 107 MA's), (38, 40910),

Gene: Adahisdi_61 Start: 42073, Stop: 41960, Start Num: 28

Candidate Starts for Adahisdi_61:

(Start: 28 @42073 has 3 MA's), (Start: 33 @42058 has 4 MA's), (Start: 35 @42046 has 107 MA's),

Gene: Aeneas_64 Start: 42831, Stop: 42745, Start Num: 35

Candidate Starts for Aeneas_64:

(Start: 35 @42831 has 107 MA's), (39, 42762),

Gene: Ajay_61 Start: 41049, Stop: 40936, Start Num: 28

Candidate Starts for Ajay_61:

(Start: 28 @41049 has 3 MA's), (Start: 33 @41034 has 4 MA's), (Start: 35 @41022 has 107 MA's), (39, 40953),

Gene: Altman_63 Start: 41128, Stop: 41042, Start Num: 35

Candidate Starts for Altman_63:

(Start: 35 @41128 has 107 MA's), (39, 41059),

Gene: Alvin_59 Start: 40335, Stop: 40249, Start Num: 35

Candidate Starts for Alvin_59:

(Start: 35 @40335 has 107 MA's), (37, 40290),

Gene: Applejack_57 Start: 38781, Stop: 38695, Start Num: 35

Candidate Starts for Applejack_57:

(Start: 33 @38793 has 4 MA's), (Start: 35 @38781 has 107 MA's), (39, 38712),

Gene: Ashballer_63 Start: 41368, Stop: 41270, Start Num: 33

Candidate Starts for Ashballer_63:

(Start: 33 @41368 has 4 MA's), (Start: 35 @41356 has 107 MA's), (39, 41287),

Gene: BPBiabs31_62 Start: 41315, Stop: 41229, Start Num: 35

Candidate Starts for BPBiabs31_62:

(16, 41375), (Start: 35 @41315 has 107 MA's), (37, 41270),

Gene: Backyardigan_55 Start: 38930, Stop: 38814, Start Num: 32

Candidate Starts for Backyardigan_55:

(5, 39068), (15, 38981), (Start: 32 @38930 has 7 MA's), (Start: 35 @38915 has 107 MA's), (39, 38846),

Gene: Barriga_62 Start: 39540, Stop: 39454, Start Num: 35

Candidate Starts for Barriga_62:

(3, 39726), (Start: 35 @39540 has 107 MA's),

Gene: BeesKnees_63 Start: 40393, Stop: 40307, Start Num: 35

Candidate Starts for BeesKnees_63:

(Start: 35 @40393 has 107 MA's), (38, 40336), (39, 40324),

Gene: Big3_59 Start: 41093, Stop: 41007, Start Num: 35

Candidate Starts for Big3_59:

(4, 41264), (Start: 35 @41093 has 107 MA's),

Gene: Bircsak_60 Start: 42546, Stop: 42460, Start Num: 35

Candidate Starts for Bircsak_60:

(Start: 35 @42546 has 107 MA's),

Gene: BluSpix_58 Start: 36376, Stop: 36290, Start Num: 35

Candidate Starts for BluSpix_58:

(Start: 33 @36388 has 4 MA's), (Start: 35 @36376 has 107 MA's),

Gene: Bob3_60 Start: 40364, Stop: 40278, Start Num: 35

Candidate Starts for Bob3_60:

(3, 40550), (Start: 35 @40364 has 107 MA's),

Gene: Briton15_65 Start: 42585, Stop: 42499, Start Num: 35

Candidate Starts for Briton15_65:

(Start: 35 @42585 has 107 MA's), (39, 42516),

Gene: Bruns_59 Start: 39510, Stop: 39424, Start Num: 35

Candidate Starts for Bruns_59:

(Start: 33 @39522 has 4 MA's), (Start: 35 @39510 has 107 MA's), (39, 39441),

Gene: Bumblebee11_56 Start: 38900, Stop: 38784, Start Num: 32

Candidate Starts for Bumblebee11_56:

(5, 39038), (15, 38951), (Start: 32 @38900 has 7 MA's), (Start: 35 @38885 has 107 MA's), (39, 38816),

Gene: Buttons_58 Start: 38459, Stop: 38373, Start Num: 35

Candidate Starts for Buttons_58:

(Start: 35 @38459 has 107 MA's),

Gene: CactusRose_59 Start: 40649, Stop: 40563, Start Num: 35

Candidate Starts for CactusRose_59:

(25, 40679), (27, 40673), (Start: 35 @40649 has 107 MA's),

Gene: Carlyle_60 Start: 39245, Stop: 39159, Start Num: 35

Candidate Starts for Carlyle_60:

(12, 39329), (Start: 35 @39245 has 107 MA's), (37, 39200),

Gene: Ciao_59 Start: 39917, Stop: 39831, Start Num: 35

Candidate Starts for Ciao_59:

(Start: 35 @39917 has 107 MA's), (39, 39848),

Gene: ConceptII_63 Start: 41983, Stop: 41897, Start Num: 35

Candidate Starts for ConceptII_63:

(Start: 35 @41983 has 107 MA's), (38, 41926), (39, 41914),

Gene: Corvo_61 Start: 41462, Stop: 41376, Start Num: 35

Candidate Starts for Corvo_61:

(Start: 35 @41462 has 107 MA's), (37, 41417),

Gene: Crispicious1_58 Start: 39702, Stop: 39616, Start Num: 35

Candidate Starts for Crispicious1_58:

(Start: 35 @39702 has 107 MA's),

Gene: Datway_57 Start: 38886, Stop: 38770, Start Num: 32

Candidate Starts for Datway_57:

(5, 39024), (15, 38937), (Start: 32 @38886 has 7 MA's), (Start: 35 @38871 has 107 MA's), (39, 38802),

Gene: Dexes_60 Start: 40821, Stop: 40735, Start Num: 35

Candidate Starts for Dexes_60:

(Start: 35 @40821 has 107 MA's), (38, 40764),

Gene: Doom_59 Start: 41395, Stop: 41309, Start Num: 34

Candidate Starts for Doom_59:

(Start: 34 @41395 has 8 MA's), (38, 41338),

Gene: DreamCatcher_64 Start: 41458, Stop: 41372, Start Num: 34

Candidate Starts for DreamCatcher_64:

(2, 41659), (16, 41515), (18, 41512), (Start: 34 @41458 has 8 MA's), (38, 41401),

Gene: Dreamboat_61 Start: 39688, Stop: 39602, Start Num: 35

Candidate Starts for Dreamboat_61:

(Start: 35 @39688 has 107 MA's), (37, 39643),

Gene: Dynamix_62 Start: 40205, Stop: 40119, Start Num: 35

Candidate Starts for Dynamix_62:

(6, 40343), (Start: 35 @40205 has 107 MA's),

Gene: Edtherson_60 Start: 41389, Stop: 41303, Start Num: 35

Candidate Starts for Edtherson_60:

(Start: 35 @41389 has 107 MA's),

Gene: Eris_58 Start: 39075, Stop: 38959, Start Num: 32

Candidate Starts for Eris_58:

(5, 39213), (15, 39126), (Start: 32 @39075 has 7 MA's), (Start: 35 @39060 has 107 MA's), (39, 38991),

Gene: Euphoria_58 Start: 40112, Stop: 40026, Start Num: 35

Candidate Starts for Euphoria_58:

(Start: 35 @40112 has 107 MA's), (38, 40055),

Gene: Eyeball_62 Start: 41559, Stop: 41473, Start Num: 35

Candidate Starts for Eyeball_62:

(Start: 33 @41571 has 4 MA's), (Start: 35 @41559 has 107 MA's),

Gene: Fajezeel_61 Start: 40257, Stop: 40171, Start Num: 35

Candidate Starts for Fajezeel_61:

(16, 40317), (Start: 35 @40257 has 107 MA's), (38, 40200),

Gene: Forsytheast_59 Start: 39678, Stop: 39592, Start Num: 35

Candidate Starts for Forsytheast_59:

(Start: 33 @39690 has 4 MA's), (Start: 35 @39678 has 107 MA's), (39, 39609),

Gene: Francis47_59 Start: 41463, Stop: 41377, Start Num: 35
Candidate Starts for Francis47_59:
(Start: 35 @41463 has 107 MA's), (38, 41406), (39, 41394),

Gene: Froghopper_58 Start: 39483, Stop: 39397, Start Num: 35
Candidate Starts for Froghopper_58:
(26, 39513), (30, 39504), (Start: 35 @39483 has 107 MA's), (38, 39426),

Gene: Fushigi_57 Start: 38939, Stop: 38853, Start Num: 35
Candidate Starts for Fushigi_57:
(Start: 35 @38939 has 107 MA's), (39, 38870),

Gene: GageAP_61 Start: 41027, Stop: 40941, Start Num: 35
Candidate Starts for GageAP_61:
(Start: 35 @41027 has 107 MA's), (37, 40982),

Gene: Gandalf20_63 Start: 42121, Stop: 42035, Start Num: 35
Candidate Starts for Gandalf20_63:
(Start: 35 @42121 has 107 MA's), (38, 42064), (39, 42052),

Gene: Gompeii16_60 Start: 42547, Stop: 42461, Start Num: 35
Candidate Starts for Gompeii16_60:
(Start: 35 @42547 has 107 MA's),

Gene: Graduation_64 Start: 41860, Stop: 41774, Start Num: 35
Candidate Starts for Graduation_64:
(Start: 35 @41860 has 107 MA's), (37, 41815),

Gene: GrecoEtereo_60 Start: 40025, Stop: 39939, Start Num: 35
Candidate Starts for GrecoEtereo_60:
(Start: 35 @40025 has 107 MA's), (38, 39968),

Gene: Greg_61 Start: 40257, Stop: 40171, Start Num: 35
Candidate Starts for Greg_61:
(16, 40317), (Start: 35 @40257 has 107 MA's), (38, 40200),

Gene: Gwendoluna_63 Start: 42377, Stop: 42291, Start Num: 35
Candidate Starts for Gwendoluna_63:
(Start: 22 @42422 has 2 MA's), (Start: 33 @42389 has 4 MA's), (Start: 35 @42377 has 107 MA's),

Gene: HanShotFirst_62 Start: 42534, Stop: 42448, Start Num: 35
Candidate Starts for HanShotFirst_62:
(Start: 35 @42534 has 107 MA's), (39, 42465),

Gene: HermioneGrange_62 Start: 41601, Stop: 41515, Start Num: 35
Candidate Starts for HermioneGrange_62:
(Start: 35 @41601 has 107 MA's), (37, 41556),

Gene: Hope4ever_62 Start: 41007, Stop: 40921, Start Num: 34
Candidate Starts for Hope4ever_62:
(1, 41217), (2, 41208), (16, 41064), (18, 41061), (Start: 34 @41007 has 8 MA's), (39, 40938),

Gene: Ichabod_64 Start: 41728, Stop: 41642, Start Num: 35

Candidate Starts for Ichabod_64:
(Start: 35 @41728 has 107 MA's), (37, 41683),

Gene: IgnatiusPatJac_60 Start: 40321, Stop: 40235, Start Num: 35
Candidate Starts for IgnatiusPatJac_60:
(Start: 33 @40333 has 4 MA's), (Start: 35 @40321 has 107 MA's),

Gene: JC27_63 Start: 41045, Stop: 40959, Start Num: 35
Candidate Starts for JC27_63:
(Start: 33 @41057 has 4 MA's), (Start: 35 @41045 has 107 MA's), (39, 40976),

Gene: JackSparrow_63 Start: 40917, Stop: 40831, Start Num: 35
Candidate Starts for JackSparrow_63:
(Start: 35 @40917 has 107 MA's),

Gene: Jorgensen_61 Start: 40326, Stop: 40240, Start Num: 35
Candidate Starts for Jorgensen_61:
(11, 40416), (14, 40398), (21, 40371), (26, 40356), (Start: 35 @40326 has 107 MA's),

Gene: JuliaChild_62 Start: 41341, Stop: 41255, Start Num: 35
Candidate Starts for JuliaChild_62:
(Start: 35 @41341 has 107 MA's), (38, 41284),

Gene: KSSJEB_61 Start: 40326, Stop: 40240, Start Num: 35
Candidate Starts for KSSJEB_61:
(Start: 35 @40326 has 107 MA's),

Gene: Kanely_62 Start: 40905, Stop: 40819, Start Num: 35
Candidate Starts for Kanely_62:
(Start: 35 @40905 has 107 MA's), (39, 40836),

Gene: Killigrew_60 Start: 41100, Stop: 41014, Start Num: 35
Candidate Starts for Killigrew_60:
(Start: 35 @41100 has 107 MA's), (39, 41031),

Gene: Kugel_60 Start: 41153, Stop: 41067, Start Num: 35
Candidate Starts for Kugel_60:
(8, 41258), (10, 41249), (Start: 33 @41165 has 4 MA's), (Start: 35 @41153 has 107 MA's),

Gene: KyMonks1A_64 Start: 40904, Stop: 40818, Start Num: 34
Candidate Starts for KyMonks1A_64:
(2, 41105), (16, 40961), (18, 40958), (Start: 34 @40904 has 8 MA's),

Gene: Kykar_61 Start: 41163, Stop: 41032, Start Num: 22
Candidate Starts for Kykar_61:
(Start: 22 @41163 has 2 MA's), (29, 41142), (Start: 33 @41130 has 4 MA's), (Start: 35 @41118 has 107 MA's),

Gene: Lamina13_64 Start: 41951, Stop: 41820, Start Num: 22
Candidate Starts for Lamina13_64:
(Start: 22 @41951 has 2 MA's), (29, 41930), (Start: 33 @41918 has 4 MA's), (Start: 35 @41906 has 107 MA's),

Gene: Lesedi_56 Start: 38890, Stop: 38804, Start Num: 35
Candidate Starts for Lesedi_56:
(16, 38950), (Start: 35 @38890 has 107 MA's),

Gene: Licorice_62 Start: 42392, Stop: 42306, Start Num: 35
Candidate Starts for Licorice_62:
(Start: 35 @42392 has 107 MA's), (39, 42323),

Gene: MPlant7149_60 Start: 39489, Stop: 39403, Start Num: 35
Candidate Starts for MPlant7149_60:
(Start: 35 @39489 has 107 MA's), (37, 39444),

Gene: Magnar_58 Start: 40505, Stop: 40419, Start Num: 35
Candidate Starts for Magnar_58:
(24, 40544), (31, 40526), (Start: 35 @40505 has 107 MA's),

Gene: Makemake_62 Start: 41962, Stop: 41876, Start Num: 35
Candidate Starts for Makemake_62:
(Start: 35 @41962 has 107 MA's), (37, 41917),

Gene: Marcell_57 Start: 39512, Stop: 39426, Start Num: 35
Candidate Starts for Marcell_57:
(Start: 35 @39512 has 107 MA's), (39, 39443),

Gene: Marchy_55 Start: 37600, Stop: 37514, Start Num: 35
Candidate Starts for Marchy_55:
(Start: 35 @37600 has 107 MA's), (39, 37531),

Gene: Marsha_60 Start: 41987, Stop: 41901, Start Num: 35
Candidate Starts for Marsha_60:
(Start: 35 @41987 has 107 MA's), (38, 41930), (39, 41918),

Gene: McGuire_62 Start: 40165, Stop: 40079, Start Num: 35
Candidate Starts for McGuire_62:
(Start: 35 @40165 has 107 MA's), (39, 40096),

Gene: Michley_63 Start: 41093, Stop: 41007, Start Num: 35
Candidate Starts for Michley_63:
(Start: 33 @41105 has 4 MA's), (Start: 35 @41093 has 107 MA's),

Gene: Moose_59 Start: 39678, Stop: 39592, Start Num: 35
Candidate Starts for Moose_59:
(Start: 33 @39690 has 4 MA's), (Start: 35 @39678 has 107 MA's), (39, 39609),

Gene: MrGordo_60 Start: 40333, Stop: 40247, Start Num: 35
Candidate Starts for MrGordo_60:
(4, 40504), (Start: 35 @40333 has 107 MA's),

Gene: Mryolo_57 Start: 40375, Stop: 40289, Start Num: 35
Candidate Starts for Mryolo_57:
(Start: 35 @40375 has 107 MA's),

Gene: Nerujay_63 Start: 42121, Stop: 42035, Start Num: 35

Candidate Starts for Nerujay_63:
(Start: 35 @42121 has 107 MA's), (38, 42064), (39, 42052),

Gene: Nhonho_59 Start: 41389, Stop: 41303, Start Num: 35
Candidate Starts for Nhonho_59:
(Start: 35 @41389 has 107 MA's),

Gene: Niza_62 Start: 41988, Stop: 41902, Start Num: 35
Candidate Starts for Niza_62:
(Start: 35 @41988 has 107 MA's), (38, 41931), (39, 41919),

Gene: Noelle_58 Start: 39222, Stop: 39106, Start Num: 32
Candidate Starts for Noelle_58:
(15, 39273), (Start: 32 @39222 has 7 MA's), (Start: 35 @39207 has 107 MA's), (39, 39138),

Gene: Oogway_60 Start: 41660, Stop: 41547, Start Num: 28
Candidate Starts for Oogway_60:
(Start: 28 @41660 has 3 MA's), (Start: 33 @41645 has 4 MA's), (Start: 35 @41633 has 107 MA's),

Gene: PacerPaul_60 Start: 40830, Stop: 40744, Start Num: 35
Candidate Starts for PacerPaul_60:
(Start: 35 @40830 has 107 MA's), (38, 40773), (39, 40761),

Gene: Papez_63 Start: 42358, Stop: 42272, Start Num: 35
Candidate Starts for Papez_63:
(Start: 35 @42358 has 107 MA's),

Gene: Paphu_60 Start: 41264, Stop: 41178, Start Num: 35
Candidate Starts for Paphu_60:
(Start: 22 @41309 has 2 MA's), (29, 41288), (Start: 33 @41276 has 4 MA's), (Start: 35 @41264 has 107 MA's),

Gene: Paraselene_58 Start: 40895, Stop: 40809, Start Num: 35
Candidate Starts for Paraselene_58:
(Start: 35 @40895 has 107 MA's), (37, 40850),

Gene: Pari_63 Start: 40356, Stop: 40270, Start Num: 35
Candidate Starts for Pari_63:
(Start: 35 @40356 has 107 MA's), (37, 40311),

Gene: Parliament_62 Start: 43056, Stop: 42970, Start Num: 35
Candidate Starts for Parliament_62:
(Start: 22 @43101 has 2 MA's), (29, 43080), (Start: 33 @43068 has 4 MA's), (Start: 35 @43056 has 107 MA's),

Gene: PattyP_63 Start: 42048, Stop: 41962, Start Num: 35
Candidate Starts for PattyP_63:
(Start: 35 @42048 has 107 MA's), (39, 41979),

Gene: Pelly_61 Start: 42060, Stop: 41974, Start Num: 35
Candidate Starts for Pelly_61:
(Start: 35 @42060 has 107 MA's), (38, 42003),

Gene: Pepe_57 Start: 39121, Stop: 39023, Start Num: 33
Candidate Starts for Pepe_57:
(Start: 33 @39121 has 4 MA's), (Start: 35 @39109 has 107 MA's),

Gene: Petp2012_62 Start: 42556, Stop: 42470, Start Num: 35
Candidate Starts for Petp2012_62:
(3, 42742), (Start: 35 @42556 has 107 MA's), (38, 42499),

Gene: Petruchio_59 Start: 39783, Stop: 39697, Start Num: 35
Candidate Starts for Petruchio_59:
(Start: 35 @39783 has 107 MA's),

Gene: PherrisBueller_59 Start: 39225, Stop: 39139, Start Num: 35
Candidate Starts for PherrisBueller_59:
(Start: 35 @39225 has 107 MA's), (37, 39180),

Gene: PhrostyMug_61 Start: 42378, Stop: 42292, Start Num: 35
Candidate Starts for PhrostyMug_61:
(Start: 35 @42378 has 107 MA's), (39, 42309),

Gene: Pinto_61 Start: 40708, Stop: 40622, Start Num: 34
Candidate Starts for Pinto_61:
(2, 40909), (16, 40765), (18, 40762), (Start: 34 @40708 has 8 MA's), (38, 40651),

Gene: Pippin_61 Start: 40310, Stop: 40224, Start Num: 35
Candidate Starts for Pippin_61:
(Start: 35 @40310 has 107 MA's), (39, 40241),

Gene: QTRlifeCrisis_61 Start: 41246, Stop: 41160, Start Num: 35
Candidate Starts for QTRlifeCrisis_61:
(Start: 35 @41246 has 107 MA's), (38, 41189),

Gene: RidgeCB_60 Start: 40684, Stop: 40598, Start Num: 34
Candidate Starts for RidgeCB_60:
(Start: 34 @40684 has 8 MA's), (38, 40627),

Gene: Ringer_60 Start: 41576, Stop: 41490, Start Num: 35
Candidate Starts for Ringer_60:
(17, 41633), (Start: 35 @41576 has 107 MA's), (37, 41531),

Gene: Rufus_62 Start: 41185, Stop: 41099, Start Num: 34
Candidate Starts for Rufus_62:
(2, 41386), (16, 41242), (18, 41239), (Start: 34 @41185 has 8 MA's), (38, 41128),

Gene: Ruotula_63 Start: 42698, Stop: 42612, Start Num: 35
Candidate Starts for Ruotula_63:
(Start: 35 @42698 has 107 MA's),

Gene: Sagefire_63 Start: 42564, Stop: 42478, Start Num: 35
Candidate Starts for Sagefire_63:
(Start: 35 @42564 has 107 MA's), (38, 42507),

Gene: SarFire_57 Start: 39630, Stop: 39544, Start Num: 35

Candidate Starts for SarFire_57:
(7, 39738), (9, 39726), (20, 39675), (Start: 35 @39630 has 107 MA's), (37, 39585),

Gene: Scowl_61 Start: 40456, Stop: 40370, Start Num: 35
Candidate Starts for Scowl_61:
(Start: 35 @40456 has 107 MA's), (37, 40411),

Gene: Seabiscuit_64 Start: 40427, Stop: 40341, Start Num: 35
Candidate Starts for Seabiscuit_64:
(Start: 35 @40427 has 107 MA's), (39, 40358),

Gene: Seanderson_60 Start: 41890, Stop: 41804, Start Num: 35
Candidate Starts for Seanderson_60:
(Start: 33 @41902 has 4 MA's), (Start: 35 @41890 has 107 MA's), (39, 41821),

Gene: Sibs6_63 Start: 39536, Stop: 39450, Start Num: 35
Candidate Starts for Sibs6_63:
(Start: 35 @39536 has 107 MA's), (39, 39467),

Gene: SkiPole_65 Start: 41165, Stop: 41067, Start Num: 33
Candidate Starts for SkiPole_65:
(Start: 33 @41165 has 4 MA's), (Start: 35 @41153 has 107 MA's),

Gene: Snazzy_59 Start: 39990, Stop: 39904, Start Num: 35
Candidate Starts for Snazzy_59:
(Start: 35 @39990 has 107 MA's),

Gene: Solon_58 Start: 39862, Stop: 39776, Start Num: 35
Candidate Starts for Solon_58:
(16, 39922), (Start: 35 @39862 has 107 MA's),

Gene: Squee_61 Start: 40708, Stop: 40622, Start Num: 35
Candidate Starts for Squee_61:
(Start: 35 @40708 has 107 MA's), (37, 40663),

Gene: Stasia_57 Start: 38828, Stop: 38709, Start Num: 32
Candidate Starts for Stasia_57:
(5, 38966), (15, 38879), (Start: 32 @38828 has 7 MA's), (36, 38810), (39, 38741),

Gene: Sunshine924_63 Start: 40103, Stop: 40017, Start Num: 35
Candidate Starts for Sunshine924_63:
(20, 40145), (Start: 35 @40103 has 107 MA's), (37, 40058),

Gene: SwissCheese_61 Start: 40178, Stop: 40092, Start Num: 35
Candidate Starts for SwissCheese_61:
(Start: 33 @40190 has 4 MA's), (Start: 35 @40178 has 107 MA's), (39, 40109),

Gene: Switzer_61 Start: 42225, Stop: 42139, Start Num: 35
Candidate Starts for Switzer_61:
(Start: 35 @42225 has 107 MA's),

Gene: Swole_62 Start: 40815, Stop: 40729, Start Num: 35
Candidate Starts for Swole_62:

(Start: 35 @40815 has 107 MA's), (38, 40758),

Gene: Tasp14_64 Start: 42545, Stop: 42459, Start Num: 35

Candidate Starts for Tasp14_64:

(Start: 22 @42590 has 2 MA's), (29, 42569), (Start: 33 @42557 has 4 MA's), (Start: 35 @42545 has 107 MA's),

Gene: Teodoridan_58 Start: 39685, Stop: 39587, Start Num: 33

Candidate Starts for Teodoridan_58:

(Start: 33 @39685 has 4 MA's), (Start: 35 @39673 has 107 MA's),

Gene: TheloniousMonk_61 Start: 42308, Stop: 42222, Start Num: 35

Candidate Starts for TheloniousMonk_61:

(13, 42380), (Start: 35 @42308 has 107 MA's),

Gene: Thor_57 Start: 38988, Stop: 38902, Start Num: 35

Candidate Starts for Thor_57:

(7, 39096), (9, 39084), (20, 39033), (Start: 35 @38988 has 107 MA's), (37, 38943),

Gene: Tote_57 Start: 38082, Stop: 37996, Start Num: 35

Candidate Starts for Tote_57:

(Start: 35 @38082 has 107 MA's), (38, 38025),

Gene: Traft412_63 Start: 41489, Stop: 41403, Start Num: 35

Candidate Starts for Traft412_63:

(Start: 35 @41489 has 107 MA's),

Gene: Tripl3t_63 Start: 43200, Stop: 43114, Start Num: 35

Candidate Starts for Tripl3t_63:

(Start: 28 @43227 has 3 MA's), (Start: 33 @43212 has 4 MA's), (Start: 35 @43200 has 107 MA's),

Gene: Trouble_62 Start: 41402, Stop: 41316, Start Num: 35

Candidate Starts for Trouble_62:

(Start: 35 @41402 has 107 MA's), (39, 41333),

Gene: Turj99_59 Start: 41800, Stop: 41714, Start Num: 34

Candidate Starts for Turj99_59:

(2, 42001), (16, 41857), (18, 41854), (Start: 34 @41800 has 8 MA's),

Gene: Watermelon_61 Start: 40365, Stop: 40279, Start Num: 35

Candidate Starts for Watermelon_61:

(Start: 35 @40365 has 107 MA's), (39, 40296),

Gene: Wheeler_60 Start: 40218, Stop: 40084, Start Num: 19

Candidate Starts for Wheeler_60:

(Start: 19 @40218 has 1 MA's), (23, 40212), (Start: 35 @40170 has 107 MA's), (39, 40101),

Gene: Xena_56 Start: 38897, Stop: 38781, Start Num: 32

Candidate Starts for Xena_56:

(15, 38948), (Start: 32 @38897 has 7 MA's), (Start: 35 @38882 has 107 MA's), (39, 38813),

Gene: Zeeculate_58 Start: 41115, Stop: 41029, Start Num: 35

Candidate Starts for Zeeculate_58:

(Start: 35 @41115 has 107 MA's), (38, 41058), (39, 41046),

Gene: Zephyr_62 Start: 40532, Stop: 40446, Start Num: 35

Candidate Starts for Zephyr_62:

(Start: 35 @40532 has 107 MA's), (39, 40463),

Gene: Zeuska_60 Start: 41858, Stop: 41760, Start Num: 33

Candidate Starts for Zeuska_60:

(Start: 33 @41858 has 4 MA's), (Start: 35 @41846 has 107 MA's),