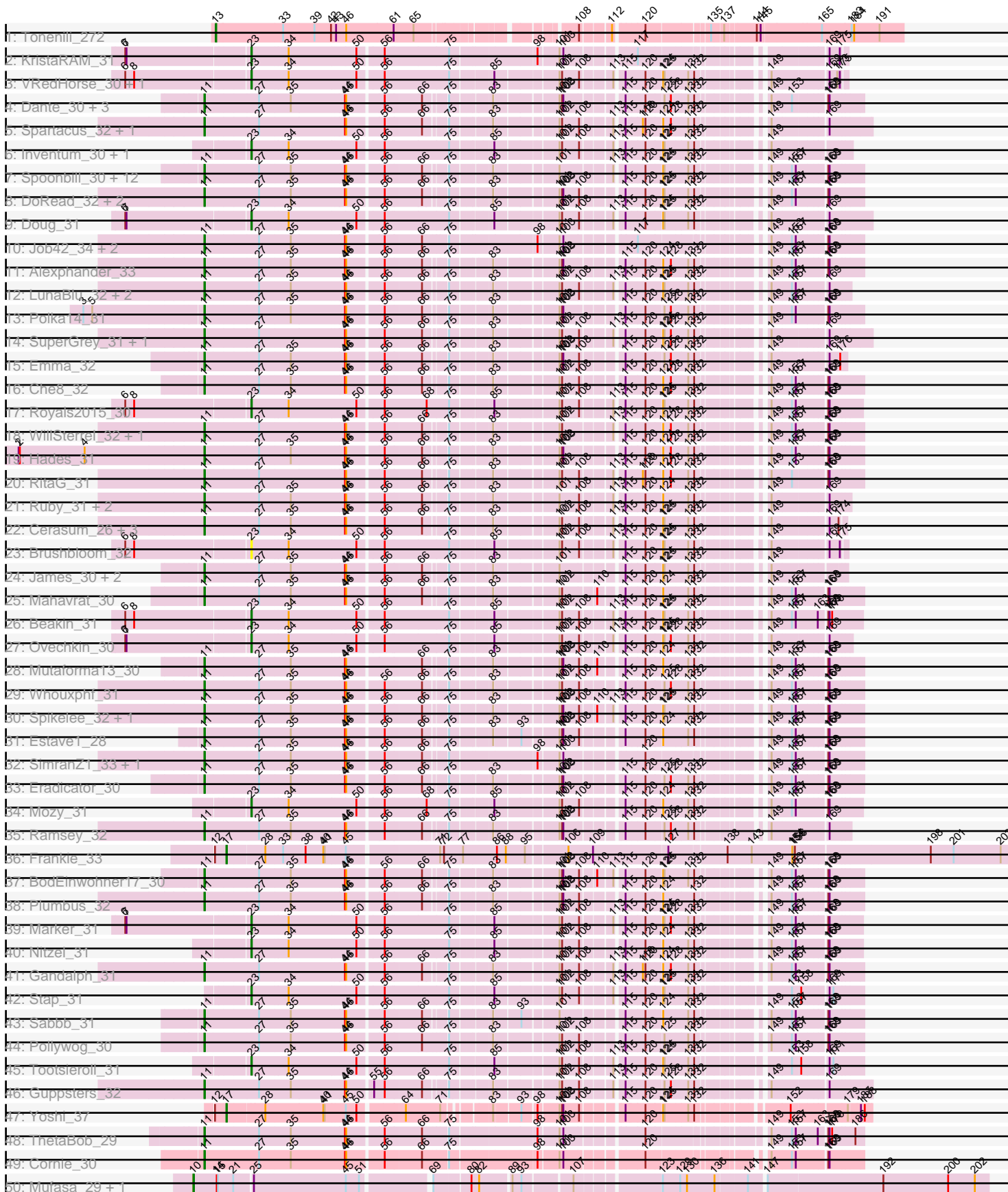
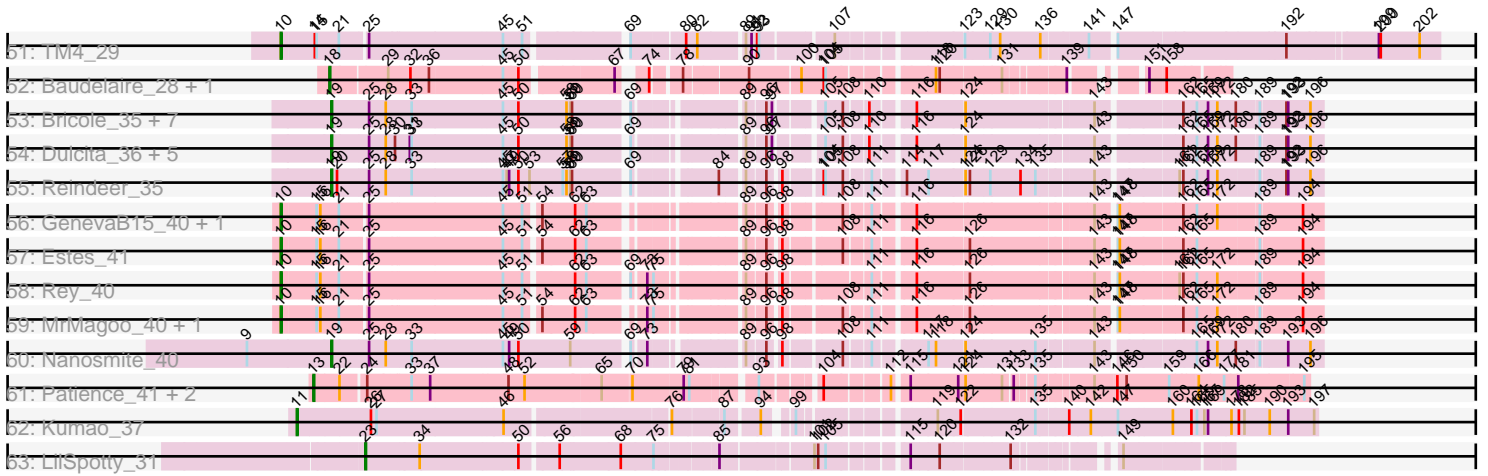


Pham 202795



Pham 202795



Note: Tracks are now grouped by subcluster and scaled. Switching in subcluster is indicated by changes in track color. Track scale is now set by default to display the region 30 bp upstream of start 1 to 30 bp downstream of the last possible start. If this default region is judged to be packed too tightly with annotated starts, the track will be further scaled to only show that region of the ORF with annotated starts. This action will be indicated by adding "Zoomed" to the title. For starts, yellow indicates the location of called starts comprised solely of Glimmer/GeneMark auto-annotations, green indicates the location of called starts with at least 1 manual gene annotation.

Pham 202795 Report

This analysis was run 01/18/25 on database version 583.

Pham number 202795 has 116 members, 4 are drafts.

Phages represented in each track:

- Track 1 : Tonenili_272
- Track 2 : KristaRAM_31
- Track 3 : VRedHorse_30, Cornucopia_31
- Track 4 : Dante_30, Empress_31, Sandalphon_31, OldBen_30
- Track 5 : Spartacus_32, Bubbles123_32
- Track 6 : Inventum_30, Sassafras_30
- Track 7 : Spoonbill_30, Sparkdehlily_30, Gorge_30, Cabrinians_30, OlympiaSaint_30, DRBy19_30, Philus_30, FreddyB_30, Priscilla_30, Radiance_30, Saal_30, Totinger_31, TDanisky_30
- Track 8 : DoRead_32, LittleShirley_33, Rialto_34
- Track 9 : Doug_31
- Track 10 : Job42_34, DosHalletts_32, Minnie_32
- Track 11 : Alexphander_33
- Track 12 : LunaBlu_32, MinionDave_32, Galactic_31
- Track 13 : Polka14_31
- Track 14 : SuperGrey_31, Rita_31
- Track 15 : Emma_32
- Track 16 : Che8_32
- Track 17 : Royals2015_30
- Track 18 : WillSterrel_32, IrishSherpFalk_32
- Track 19 : Hades_31
- Track 20 : RitaG_31
- Track 21 : Ruby_31, MisterCuddles_31, Girr_31
- Track 22 : Cerasum_26, Velveteen_26, Sarma624_26, BigPhil_26
- Track 23 : Brushbloom_32
- Track 24 : James_30, Mattes_30, BobaPhett_30
- Track 25 : Mahavrat_30
- Track 26 : Beakin_31
- Track 27 : Ovechkin_30
- Track 28 : Mutaforma13_30
- Track 29 : Whouxphf_31
- Track 30 : Spikelee_32, BuzzLyseyear_33
- Track 31 : Estave1_28
- Track 32 : SimranZ1_33, Boomer_32
- Track 33 : Eradicator_30
- Track 34 : Mozy_31
- Track 35 : Ramsey_32

- Track 36 : Frankie_33
- Track 37 : BodEinwohner17_30
- Track 38 : Plumbus_32
- Track 39 : Marker_31
- Track 40 : Nitzel_31
- Track 41 : Gandalph_31
- Track 42 : Stap_31
- Track 43 : Sabbb_31
- Track 44 : Pollywog_30
- Track 45 : Tootsieroll_31
- Track 46 : Guppsters_32
- Track 47 : Yoshi_37
- Track 48 : ThetaBob_29
- Track 49 : Cornie_30
- Track 50 : Mufasa_29, BoostSeason_29
- Track 51 : TM4_29
- Track 52 : Baudelaire_28, Aegeus_28
- Track 53 : Bricole_35, TyDawg_35, IPhone7_35, Bongo_35, Skinny_36, FreakyGoo_35, PegLeg_35, LilhomieP_34
- Track 54 : Dulcita_36, Izel_34, SlimJimmy_34, Diminimus_36, Glaske16_36, Auspice_35
- Track 55 : Reindeer_35
- Track 56 : GenevaB15_40, Aziz_40
- Track 57 : Estes_41
- Track 58 : Rey_40
- Track 59 : MrMagoo_40, GardenSalsa_40
- Track 60 : Nanosmite_40
- Track 61 : Patience_41, Labelle_40, Madrugá_39
- Track 62 : Kumao_37
- Track 63 : LilSpotty_31

Summary of Final Annotations (See graph section above for start numbers):

The start number called the most often in the published annotations is 11, it was called in 66 of the 112 non-draft genes in the pham.

Genes that call this "Most Annotated" start:

- Alexphander_33, BigPhil_26, BobaPhett_30, BodEinwohner17_30, Boomer_32, Bubbles123_32, BuzzLyseyear_33, Cabrinians_30, Cerasum_26, Che8_32, Cornie_30, DRBy19_30, Dante_30, DoRead_32, DosHalletts_32, Emma_32, Empress_31, Eradicator_30, Estave1_28, FreddyB_30, Galactic_31, Gandalph_31, Girr_31, Gorge_30, Guppsters_32, Hades_31, IrishSherpFalk_32, James_30, Job42_34, Kumao_37, LittleShirley_33, LunaBlu_32, Mahavrat_30, Mattes_30, MinionDave_32, Minnie_32, MisterCuddles_31, Mutaforma13_30, OldBen_30, OlympiaSaint_30, Philus_30, Plumbus_32, Polka14_31, Pollywog_30, Priscilla_30, Radiance_30, Ramsey_32, Rialto_34, RitaG_31, Rita_31, Ruby_31, Saal_30, Sabbb_31, Sandalphon_31, Sarma624_26, SimranZ1_33, Sparkdehlily_30, Spartacus_32, Spikelee_32, Spoonbill_30, SuperGrey_31, TDanisky_30, ThetaBob_29, Totinger_31, Velveteen_26, Whouxphf_31, WillSterrel_32,

Genes that have the "Most Annotated" start but do not call it:

-

Genes that do not have the "Most Annotated" start:

- Aegeus_28, Auspice_35, Aziz_40, Baudelaire_28, Beakin_31, Bongo_35, BoostSeason_29, Bricole_35, Brushbloom_32, Cornucopia_31, Diminimus_36, Doug_31, Dulcita_36, Estes_41, Frankie_33, FreakyGoo_35, GardenSalsa_40, GenevaB15_40, Glaske16_36, IPHane7_35, Inventum_30, Izel_34, KristaRAM_31, Labelle_40, LilSpotty_31, LilhomieP_34, Madruga_39, Marker_31, Mozy_31, MrMagoo_40, Mufasa_29, Nanosmite_40, Nitzel_31, Ovechkin_30, Patience_41, PegLeg_35, Reindeer_35, Rey_40, Royals2015_30, Sassafras_30, Skinny_36, SlimJimmy_34, Stap_31, TM4_29, Tonenili_272, Tootsieroll_31, TyDawg_35, VRedHorse_30, Yoshi_37,

Summary by start number:

Start 10:

- Found in 9 of 116 (7.8%) of genes in pham
- Manual Annotations of this start: 9 of 112
- Called 100.0% of time when present
- Phage (with cluster) where this start called: Aziz_40 (M2), BoostSeason_29 (K2), Estes_41 (M2), GardenSalsa_40 (M2), GenevaB15_40 (M2), MrMagoo_40 (M2), Mufasa_29 (K2), Rey_40 (M2), TM4_29 (K2),

Start 11:

- Found in 67 of 116 (57.8%) of genes in pham
- Manual Annotations of this start: 66 of 112
- Called 100.0% of time when present
- Phage (with cluster) where this start called: Alexphander_33 (F1), BigPhil_26 (F1), BobaPhett_30 (F1), BodEinwohner17_30 (F1), Boomer_32 (F1), Bubbles123_32 (F1), BuzzLyseyear_33 (F1), Cabrinians_30 (F1), Cerasum_26 (F1), Che8_32 (F1), Cornie_30 (F5), DRBy19_30 (F1), Dante_30 (F1), DoRead_32 (F1), DosHalletts_32 (F1), Emma_32 (F1), Empress_31 (F1), Eradicator_30 (F1), Estave1_28 (F1), FreddyB_30 (F1), Galactic_31 (F1), Gandolph_31 (F1), Girr_31 (F1), Gorge_30 (F1), Guppsters_32 (F1), Hades_31 (F1), IrishSherpFalk_32 (F1), James_30 (F1), Job42_34 (F1), Kumao_37 (singleton), LittleShirley_33 (F1), LunaBlu_32 (F1), Mahavrat_30 (F1), Mattes_30 (F1), MinionDave_32 (F1), Minnie_32 (F1), MisterCuddles_31 (F1), Mutaforma13_30 (F1), OldBen_30 (F1), OlympiaSaint_30 (F1), Philus_30 (F1), Plumbus_32 (F1), Polka14_31 (F1), Pollywog_30 (F1), Priscilla_30 (F1), Radiance_30 (F1), Ramsey_32 (F1), Rialto_34 (F1), RitaG_31 (F1), Rita_31 (F1), Ruby_31 (F1), Saal_30 (F1), Sabbb_31 (F1), Sandalphon_31 (F1), Sarma624_26 (F1), SimranZ1_33 (F1), Sparkdehlily_30 (F1), Spartacus_32 (F1), Spikelee_32 (F1), Spoonbill_30 (F1), SuperGrey_31 (F1), TDanisky_30 (F1), ThetaBob_29 (F4), Totinger_31 (F1), Velveteen_26 (F1), Whouxphf_31 (F1), WillSterrel_32 (F1),

Start 13:

- Found in 4 of 116 (3.4%) of genes in pham
- Manual Annotations of this start: 4 of 112
- Called 100.0% of time when present
- Phage (with cluster) where this start called: Labelle_40 (U), Madruga_39 (U), Patience_41 (U), Tonenili_272 (C1),

Start 17:

- Found in 2 of 116 (1.7%) of genes in pham
- Manual Annotations of this start: 2 of 112
- Called 100.0% of time when present
- Phage (with cluster) where this start called: Frankie_33 (F1), Yoshi_37 (F2),

Start 18:

- Found in 2 of 116 (1.7%) of genes in pham
- Manual Annotations of this start: 2 of 112
- Called 100.0% of time when present
- Phage (with cluster) where this start called: Aegeus_28 (L5), Baudelaire_28 (L5),

Start 19:

- Found in 16 of 116 (13.8%) of genes in pham
- Manual Annotations of this start: 14 of 112
- Called 100.0% of time when present
- Phage (with cluster) where this start called: Auspice_35 (M1), Bongo_35 (M1), Bricole_35 (M1), Diminimus_36 (M1), Dulcita_36 (M1), FreakyGoo_35 (M1), Glaske16_36 (M1), IPhane7_35 (M1), Izel_34 (M1), LilhomieP_34 (M1), Nanosmite_40 (M3), PegLeg_35 (M1), Reindeer_35 (M1), Skinny_36 (M1), SlimJimmy_34 (M1), TyDawg_35 (M1),

Start 23:

- Found in 16 of 116 (13.8%) of genes in pham
- Manual Annotations of this start: 15 of 112
- Called 100.0% of time when present
- Phage (with cluster) where this start called: Beakin_31 (F1), Brushbloom_32 (F1), Cornucopia_31 (F1), Doug_31 (F1), Inventum_30 (F1), KristaRAM_31 (F1), LilSpotty_31 (singleton), Marker_31 (F1), Mozy_31 (F1), Nitzel_31 (F1), Ovechkin_30 (F1), Royals2015_30 (F1), Sassafras_30 (F1), Stap_31 (F1), Tootsieroll_31 (F1), VRedHorse_30 (F1),

Summary by clusters:

There are 12 clusters represented in this pham: F1, F2, F4, F5, singleton, K2, L5, M1, M3, M2, U, C1,

Info for manual annotations of cluster C1:

- Start number 13 was manually annotated 1 time for cluster C1.

Info for manual annotations of cluster F1:

- Start number 11 was manually annotated 63 times for cluster F1.
- Start number 17 was manually annotated 1 time for cluster F1.
- Start number 23 was manually annotated 14 times for cluster F1.

Info for manual annotations of cluster F2:

- Start number 17 was manually annotated 1 time for cluster F2.

Info for manual annotations of cluster F4:

- Start number 11 was manually annotated 1 time for cluster F4.

Info for manual annotations of cluster F5:

- Start number 11 was manually annotated 1 time for cluster F5.

Info for manual annotations of cluster K2:

- Start number 10 was manually annotated 3 times for cluster K2.

Info for manual annotations of cluster L5:

- Start number 18 was manually annotated 2 times for cluster L5.

Info for manual annotations of cluster M1:

- Start number 19 was manually annotated 13 times for cluster M1.

Info for manual annotations of cluster M2:

- Start number 10 was manually annotated 6 times for cluster M2.

Info for manual annotations of cluster M3:

- Start number 19 was manually annotated 1 time for cluster M3.

Info for manual annotations of cluster U:

- Start number 13 was manually annotated 3 times for cluster U.

Gene Information:

Gene: Aegeus_28 Start: 24440, Stop: 25621, Start Num: 18

Candidate Starts for Aegeus_28:

(Start: 18 @24440 has 2 MA's), (29, 24524), (32, 24557), (36, 24587), (45, 24701), (50, 24725), (67, 24854), (74, 24881), (78, 24914), (90, 25004), (100, 25082), (104, 25118), (105, 25121), (118, 25262), (120, 25268), (131, 25358), (139, 25433), (151, 25511), (158, 25535),

Gene: Alexphander_33 Start: 27007, Stop: 28281, Start Num: 11

Candidate Starts for Alexphander_33:

(Start: 11 @27007 has 66 MA's), (27, 27127), (35, 27199), (44, 27316), (46, 27319), (56, 27397), (66, 27478), (75, 27520), (83, 27598), (101, 27724), (102, 27730), (103, 27733), (115, 27844), (120, 27886), (124, 27922), (128, 27940), (131, 27976), (132, 27985), (149, 28099), (153, 28141), (157, 28150), (168, 28207), (169, 28210),

Gene: Auspice_35 Start: 29799, Stop: 31166, Start Num: 19

Candidate Starts for Auspice_35:

(Start: 19 @29799 has 14 MA's), (25, 29856), (28, 29883), (30, 29898), (31, 29919), (33, 29922), (45, 30060), (50, 30084), (58, 30162), (59, 30168), (60, 30171), (69, 30246), (89, 30378), (96, 30405), (97, 30414), (105, 30468), (108, 30495), (110, 30525), (116, 30579), (124, 30651), (143, 30837), (162, 30957), (165, 30978), (169, 30996), (172, 31011), (180, 31041), (189, 31071), (192, 31107), (193, 31110), (196, 31146),

Gene: Aziz_40 Start: 30943, Stop: 32358, Start Num: 10

Candidate Starts for Aziz_40:

(Start: 10 @30943 has 9 MA's), (15, 30997), (16, 31003), (21, 31033), (25, 31069), (45, 31270), (51, 31300), (54, 31318), (62, 31369), (63, 31384), (89, 31573), (96, 31600), (98, 31615), (108, 31690), (111, 31723), (116, 31774), (143, 32029), (147, 32053), (148, 32056), (162, 32149), (165, 32170), (172, 32203), (189, 32263), (194, 32326),

Gene: Baudelaire_28 Start: 24440, Stop: 25621, Start Num: 18

Candidate Starts for Baudelaire_28:

(Start: 18 @24440 has 2 MA's), (29, 24524), (32, 24557), (36, 24587), (45, 24701), (50, 24725), (67, 24854), (74, 24881), (78, 24914), (90, 25004), (100, 25082), (104, 25118), (105, 25121), (118, 25262), (120, 25268), (131, 25358), (139, 25433), (151, 25511), (158, 25535),

Gene: Beakin_31 Start: 26224, Stop: 27414, Start Num: 23

Candidate Starts for Beakin_31:

(6, 25951), (8, 25972), (Start: 23 @26224 has 15 MA's), (34, 26308), (50, 26458), (56, 26512), (75, 26653), (85, 26731), (101, 26857), (102, 26863), (108, 26902), (113, 26962), (115, 26977), (120, 27019), (124, 27055), (125, 27058), (131, 27109), (132, 27118), (149, 27232), (153, 27274), (157, 27283), (163, 27325), (168, 27340), (169, 27343), (170, 27349),

Gene: BigPhil_26 Start: 22498, Stop: 23733, Start Num: 11

Candidate Starts for BigPhil_26:

(Start: 11 @22498 has 66 MA's), (27, 22618), (35, 22690), (44, 22807), (46, 22810), (56, 22888), (66, 22969), (75, 23011), (83, 23089), (101, 23215), (102, 23221), (108, 23260), (113, 23320), (115, 23335), (120, 23377), (124, 23413), (125, 23416), (131, 23467), (132, 23476), (149, 23590), (169, 23701), (174, 23722),

Gene: BobaPhett_30 Start: 26476, Stop: 27711, Start Num: 11

Candidate Starts for BobaPhett_30:

(Start: 11 @26476 has 66 MA's), (27, 26593), (35, 26665), (44, 26782), (46, 26785), (56, 26863), (66, 26944), (75, 26986), (83, 27064), (101, 27190), (115, 27310), (120, 27352), (124, 27388), (125, 27391), (131, 27442), (132, 27451), (149, 27565),

Gene: BodEinwohner17_30 Start: 26635, Stop: 27906, Start Num: 11

Candidate Starts for BodEinwohner17_30:

(Start: 11 @26635 has 66 MA's), (27, 26752), (35, 26824), (44, 26941), (46, 26944), (56, 27022), (66, 27103), (75, 27145), (83, 27223), (101, 27349), (102, 27355), (103, 27358), (108, 27394), (110, 27424), (113, 27454), (115, 27469), (120, 27511), (124, 27547), (125, 27550), (131, 27601), (132, 27610), (149, 27724), (153, 27766), (157, 27775), (168, 27832), (169, 27835),

Gene: Bongo_35 Start: 29799, Stop: 31166, Start Num: 19

Candidate Starts for Bongo_35:

(Start: 19 @29799 has 14 MA's), (25, 29856), (28, 29883), (33, 29922), (45, 30060), (50, 30084), (58, 30162), (59, 30168), (60, 30171), (69, 30246), (89, 30378), (96, 30405), (97, 30414), (105, 30468), (108, 30495), (110, 30525), (116, 30579), (124, 30651), (143, 30837), (162, 30957), (165, 30978), (169, 30996), (172, 31011), (180, 31041), (189, 31071), (192, 31107), (193, 31110), (196, 31146),

Gene: Boomer_32 Start: 26275, Stop: 27576, Start Num: 11

Candidate Starts for Boomer_32:

(Start: 11 @26275 has 66 MA's), (27, 26395), (35, 26467), (44, 26584), (46, 26587), (56, 26665), (66, 26746), (75, 26797), (98, 26974), (101, 27016), (103, 27025), (120, 27181), (149, 27394), (153, 27436), (157, 27445), (168, 27502), (169, 27505),

Gene: BoostSeason_29 Start: 23227, Stop: 24885, Start Num: 10

Candidate Starts for BoostSeason_29:

(Start: 10 @23227 has 9 MA's), (14, 23278), (15, 23281), (21, 23317), (25, 23353), (45, 23554), (51, 23584), (69, 23722), (80, 23794), (82, 23809), (89, 23875), (93, 23896), (107, 23998), (123, 24169), (129, 24205), (130, 24220), (136, 24283), (141, 24352), (147, 24385), (192, 24640), (200, 24790), (202, 24853),

Gene: Bricole_35 Start: 29785, Stop: 31152, Start Num: 19

Candidate Starts for Bricole_35:

(Start: 19 @29785 has 14 MA's), (25, 29842), (28, 29869), (33, 29908), (45, 30046), (50, 30070), (58, 30148), (59, 30154), (60, 30157), (69, 30232), (89, 30364), (96, 30391), (97, 30400), (105, 30454), (108, 30481), (110, 30511), (116, 30565), (124, 30637), (143, 30823), (162, 30943), (165, 30964), (169, 30982), (172, 30997), (180, 31027), (189, 31057), (192, 31093), (193, 31096), (196, 31132),

Gene: Brushbloom_32 Start: 26379, Stop: 27533, Start Num: 23

Candidate Starts for Brushbloom_32:

(6, 26106), (8, 26127), (Start: 23 @26379 has 15 MA's), (34, 26463), (50, 26613), (56, 26667), (75, 26808), (85, 26889), (101, 27015), (102, 27021), (108, 27060), (113, 27120), (115, 27135), (120, 27177), (124, 27213), (125, 27216), (131, 27267), (132, 27276), (149, 27390), (169, 27501), (175, 27522),

Gene: Bubbles123_32 Start: 27209, Stop: 28501, Start Num: 11

Candidate Starts for Bubbles123_32:

(Start: 11 @27209 has 66 MA's), (27, 27329), (44, 27518), (46, 27521), (56, 27599), (66, 27680), (75, 27722), (83, 27800), (101, 27926), (102, 27932), (108, 27971), (113, 28031), (115, 28046), (118, 28082), (120, 28088), (124, 28124), (128, 28142), (131, 28178), (132, 28187), (149, 28301), (169, 28412),

Gene: BuzzLyseyear_33 Start: 27038, Stop: 28312, Start Num: 11

Candidate Starts for BuzzLyseyear_33:

(Start: 11 @27038 has 66 MA's), (27, 27158), (35, 27230), (44, 27347), (46, 27350), (56, 27428), (66, 27509), (75, 27551), (83, 27629), (101, 27755), (102, 27761), (103, 27764), (108, 27800), (110, 27830), (113, 27860), (115, 27875), (120, 27917), (124, 27953), (125, 27956), (131, 28007), (132, 28016), (149, 28130), (153, 28172), (157, 28181), (168, 28238), (169, 28241),

Gene: Cabrinians_30 Start: 26504, Stop: 27775, Start Num: 11

Candidate Starts for Cabrinians_30:

(Start: 11 @26504 has 66 MA's), (27, 26621), (35, 26693), (44, 26810), (46, 26813), (56, 26891), (66, 26972), (75, 27014), (83, 27092), (101, 27218), (113, 27323), (115, 27338), (120, 27380), (124, 27416), (125, 27419), (131, 27470), (132, 27479), (149, 27593), (153, 27635), (157, 27644), (168, 27701), (169, 27704),

Gene: Cerasum_26 Start: 22498, Stop: 23733, Start Num: 11

Candidate Starts for Cerasum_26:

(Start: 11 @22498 has 66 MA's), (27, 22618), (35, 22690), (44, 22807), (46, 22810), (56, 22888), (66, 22969), (75, 23011), (83, 23089), (101, 23215), (102, 23221), (108, 23260), (113, 23320), (115, 23335), (120, 23377), (124, 23413), (125, 23416), (131, 23467), (132, 23476), (149, 23590), (169, 23701), (174, 23722),

Gene: Che8_32 Start: 26683, Stop: 27957, Start Num: 11

Candidate Starts for Che8_32:

(Start: 11 @26683 has 66 MA's), (27, 26803), (35, 26875), (44, 26992), (46, 26995), (56, 27073), (66, 27154), (75, 27196), (83, 27274), (101, 27400), (102, 27406), (108, 27445), (115, 27520), (120, 27562), (124, 27598), (128, 27616), (131, 27652), (132, 27661), (149, 27775), (153, 27817), (157, 27826), (168, 27883), (169, 27886),

Gene: Cornie_30 Start: 26720, Stop: 28018, Start Num: 11

Candidate Starts for Cornie_30:

(Start: 11 @26720 has 66 MA's), (27, 26837), (35, 26909), (44, 27026), (46, 27029), (56, 27107), (66, 27188), (75, 27239), (98, 27416), (101, 27458), (103, 27467), (120, 27623), (149, 27836), (153, 27878), (157, 27887), (168, 27944), (169, 27947),

Gene: Cornucopia_31 Start: 26383, Stop: 27534, Start Num: 23

Candidate Starts for Cornucopia_31:

(6, 26110), (8, 26131), (Start: 23 @26383 has 15 MA's), (34, 26467), (50, 26617), (56, 26671), (75, 26812), (85, 26890), (101, 27016), (102, 27022), (108, 27061), (113, 27121), (115, 27136), (120, 27178), (124, 27214), (125, 27217), (131, 27268), (132, 27277), (149, 27391), (169, 27502), (173, 27520), (175, 27523),

Gene: DRBy19_30 Start: 26346, Stop: 27617, Start Num: 11

Candidate Starts for DRBy19_30:

(Start: 11 @26346 has 66 MA's), (27, 26463), (35, 26535), (44, 26652), (46, 26655), (56, 26733), (66, 26814), (75, 26856), (83, 26934), (101, 27060), (113, 27165), (115, 27180), (120, 27222), (124, 27258), (125, 27261), (131, 27312), (132, 27321), (149, 27435), (153, 27477), (157, 27486), (168, 27543), (169, 27546),

Gene: Dante_30 Start: 26366, Stop: 27637, Start Num: 11

Candidate Starts for Dante_30:

(Start: 11 @26366 has 66 MA's), (27, 26483), (35, 26555), (44, 26672), (46, 26675), (56, 26753), (66, 26834), (75, 26876), (83, 26954), (101, 27080), (102, 27086), (103, 27089), (115, 27200), (120, 27242), (125, 27281), (128, 27296), (131, 27332), (132, 27341), (149, 27455), (153, 27497), (168, 27563), (169, 27566),

Gene: Diminimus_36 Start: 29798, Stop: 31165, Start Num: 19

Candidate Starts for Diminimus_36:

(Start: 19 @29798 has 14 MA's), (25, 29855), (28, 29882), (30, 29897), (31, 29918), (33, 29921), (45, 30059), (50, 30083), (58, 30161), (59, 30167), (60, 30170), (69, 30245), (89, 30377), (96, 30404), (97, 30413), (105, 30467), (108, 30494), (110, 30524), (116, 30578), (124, 30650), (143, 30836), (162, 30956), (165, 30977), (169, 30995), (172, 31010), (180, 31040), (189, 31070), (192, 31106), (193, 31109), (196, 31145),

Gene: DoRead_32 Start: 26477, Stop: 27751, Start Num: 11

Candidate Starts for DoRead_32:

(Start: 11 @26477 has 66 MA's), (27, 26597), (35, 26669), (44, 26786), (46, 26789), (56, 26867), (66, 26948), (75, 26990), (83, 27068), (101, 27194), (102, 27200), (103, 27203), (108, 27239), (115, 27314), (120, 27356), (124, 27392), (125, 27395), (131, 27446), (132, 27455), (149, 27569), (153, 27611), (157, 27620), (168, 27677), (169, 27680),

Gene: DosHalletts_32 Start: 26602, Stop: 27903, Start Num: 11

Candidate Starts for DosHalletts_32:

(Start: 11 @26602 has 66 MA's), (27, 26722), (35, 26794), (44, 26911), (46, 26914), (56, 26992), (66, 27073), (75, 27124), (98, 27301), (101, 27343), (103, 27352), (117, 27490), (149, 27721), (153, 27763), (157, 27772), (168, 27829), (169, 27832),

Gene: Doug_31 Start: 26879, Stop: 28087, Start Num: 23

Candidate Starts for Doug_31:

(6, 26606), (7, 26609), (Start: 23 @26879 has 15 MA's), (34, 26963), (50, 27113), (56, 27167), (75, 27308), (85, 27386), (101, 27512), (102, 27518), (108, 27557), (113, 27617), (115, 27632), (120, 27674), (124, 27710), (125, 27713), (131, 27764), (132, 27773), (149, 27887), (169, 27998),

Gene: Dulcita_36 Start: 29798, Stop: 31165, Start Num: 19

Candidate Starts for Dulcita_36:

(Start: 19 @29798 has 14 MA's), (25, 29855), (28, 29882), (30, 29897), (31, 29918), (33, 29921), (45, 30059), (50, 30083), (58, 30161), (59, 30167), (60, 30170), (69, 30245), (89, 30377), (96, 30404), (97, 30413), (105, 30467), (108, 30494), (110, 30524), (116, 30578), (124, 30650), (143, 30836), (162,

30956), (165, 30977), (169, 30995), (172, 31010), (180, 31040), (189, 31070), (192, 31106), (193, 31109), (196, 31145),

Gene: Emma_32 Start: 26896, Stop: 28128, Start Num: 11

Candidate Starts for Emma_32:

(Start: 11 @26896 has 66 MA's), (27, 27013), (35, 27085), (44, 27202), (46, 27205), (56, 27283), (66, 27364), (75, 27406), (83, 27484), (101, 27610), (102, 27616), (103, 27619), (108, 27655), (115, 27730), (120, 27772), (125, 27811), (128, 27826), (131, 27862), (132, 27871), (149, 27985), (169, 28096), (176, 28117),

Gene: Empress_31 Start: 27662, Stop: 28933, Start Num: 11

Candidate Starts for Empress_31:

(Start: 11 @27662 has 66 MA's), (27, 27779), (35, 27851), (44, 27968), (46, 27971), (56, 28049), (66, 28130), (75, 28172), (83, 28250), (101, 28376), (102, 28382), (103, 28385), (115, 28496), (120, 28538), (125, 28577), (128, 28592), (131, 28628), (132, 28637), (149, 28751), (153, 28793), (168, 28859), (169, 28862),

Gene: Eradicator_30 Start: 26355, Stop: 27626, Start Num: 11

Candidate Starts for Eradicator_30:

(Start: 11 @26355 has 66 MA's), (27, 26472), (35, 26544), (44, 26661), (46, 26664), (56, 26742), (66, 26823), (75, 26865), (83, 26943), (101, 27069), (102, 27075), (103, 27078), (115, 27189), (120, 27231), (125, 27270), (128, 27285), (131, 27321), (132, 27330), (149, 27444), (153, 27486), (157, 27495), (168, 27552), (169, 27555),

Gene: Estave1_28 Start: 25767, Stop: 27038, Start Num: 11

Candidate Starts for Estave1_28:

(Start: 11 @25767 has 66 MA's), (27, 25884), (35, 25956), (44, 26073), (46, 26076), (56, 26154), (66, 26235), (75, 26277), (83, 26355), (93, 26409), (101, 26481), (102, 26487), (103, 26490), (108, 26526), (115, 26601), (120, 26643), (124, 26679), (131, 26733), (132, 26742), (149, 26856), (153, 26898), (157, 26907), (168, 26964), (169, 26967),

Gene: Estes_41 Start: 31074, Stop: 32489, Start Num: 10

Candidate Starts for Estes_41:

(Start: 10 @31074 has 9 MA's), (15, 31128), (16, 31134), (21, 31164), (25, 31200), (45, 31401), (51, 31431), (54, 31449), (62, 31500), (63, 31515), (89, 31704), (96, 31731), (98, 31746), (108, 31821), (111, 31854), (116, 31905), (126, 31983), (143, 32160), (147, 32184), (148, 32187), (162, 32280), (165, 32301), (189, 32394), (194, 32457),

Gene: Frankie_33 Start: 26909, Stop: 28665, Start Num: 17

Candidate Starts for Frankie_33:

(12, 26888), (Start: 17 @26909 has 2 MA's), (28, 26990), (33, 27029), (38, 27080), (40, 27122), (41, 27125), (45, 27170), (71, 27365), (72, 27374), (77, 27419), (86, 27497), (88, 27518), (95, 27563), (106, 27647), (109, 27704), (127, 27872), (138, 27992), (143, 28046), (154, 28133), (155, 28136), (156, 28139), (198, 28433), (201, 28487), (203, 28598),

Gene: FreakyGoo_35 Start: 29799, Stop: 31166, Start Num: 19

Candidate Starts for FreakyGoo_35:

(Start: 19 @29799 has 14 MA's), (25, 29856), (28, 29883), (33, 29922), (45, 30060), (50, 30084), (58, 30162), (59, 30168), (60, 30171), (69, 30246), (89, 30378), (96, 30405), (97, 30414), (105, 30468), (108, 30495), (110, 30525), (116, 30579), (124, 30651), (143, 30837), (162, 30957), (165, 30978), (169, 30996), (172, 31011), (180, 31041), (189, 31071), (192, 31107), (193, 31110), (196, 31146),

Gene: FreddyB_30 Start: 26513, Stop: 27784, Start Num: 11

Candidate Starts for FreddyB_30:

(Start: 11 @26513 has 66 MA's), (27, 26630), (35, 26702), (44, 26819), (46, 26822), (56, 26900), (66, 26981), (75, 27023), (83, 27101), (101, 27227), (113, 27332), (115, 27347), (120, 27389), (124, 27425), (125, 27428), (131, 27479), (132, 27488), (149, 27602), (153, 27644), (157, 27653), (168, 27710), (169, 27713),

Gene: Galactic_31 Start: 26523, Stop: 27770, Start Num: 11

Candidate Starts for Galactic_31:

(Start: 11 @26523 has 66 MA's), (27, 26643), (35, 26715), (44, 26832), (46, 26835), (56, 26913), (66, 26994), (75, 27036), (83, 27114), (101, 27240), (102, 27246), (108, 27285), (113, 27345), (115, 27360), (120, 27402), (124, 27438), (125, 27441), (131, 27492), (132, 27501), (149, 27615), (153, 27657), (157, 27666), (169, 27726),

Gene: Gandolph_31 Start: 26586, Stop: 27860, Start Num: 11

Candidate Starts for Gandolph_31:

(Start: 11 @26586 has 66 MA's), (27, 26706), (44, 26895), (46, 26898), (56, 26976), (66, 27057), (75, 27099), (83, 27177), (101, 27303), (102, 27309), (108, 27348), (113, 27408), (115, 27423), (118, 27459), (120, 27465), (124, 27501), (128, 27519), (131, 27555), (132, 27564), (149, 27678), (153, 27720), (157, 27729), (168, 27786), (169, 27789),

Gene: GardenSalsa_40 Start: 30898, Stop: 32313, Start Num: 10

Candidate Starts for GardenSalsa_40:

(Start: 10 @30898 has 9 MA's), (15, 30952), (16, 30958), (21, 30988), (25, 31024), (45, 31225), (51, 31255), (54, 31273), (62, 31324), (63, 31339), (73, 31411), (75, 31417), (89, 31528), (96, 31555), (98, 31570), (108, 31645), (111, 31678), (116, 31729), (126, 31807), (143, 31984), (147, 32008), (148, 32011), (162, 32104), (165, 32125), (172, 32158), (189, 32218), (194, 32281),

Gene: GenevaB15_40 Start: 30943, Stop: 32358, Start Num: 10

Candidate Starts for GenevaB15_40:

(Start: 10 @30943 has 9 MA's), (15, 30997), (16, 31003), (21, 31033), (25, 31069), (45, 31270), (51, 31300), (54, 31318), (62, 31369), (63, 31384), (89, 31573), (96, 31600), (98, 31615), (108, 31690), (111, 31723), (116, 31774), (143, 32029), (147, 32053), (148, 32056), (162, 32149), (165, 32170), (172, 32203), (189, 32263), (194, 32326),

Gene: Girr_31 Start: 26444, Stop: 27691, Start Num: 11

Candidate Starts for Girr_31:

(Start: 11 @26444 has 66 MA's), (27, 26564), (35, 26636), (44, 26753), (46, 26756), (56, 26834), (66, 26915), (75, 26957), (83, 27035), (101, 27161), (108, 27206), (113, 27266), (115, 27281), (120, 27323), (124, 27359), (131, 27413), (132, 27422), (149, 27536), (169, 27647),

Gene: Glaske16_36 Start: 29798, Stop: 31165, Start Num: 19

Candidate Starts for Glaske16_36:

(Start: 19 @29798 has 14 MA's), (25, 29855), (28, 29882), (30, 29897), (31, 29918), (33, 29921), (45, 30059), (50, 30083), (58, 30161), (59, 30167), (60, 30170), (69, 30245), (89, 30377), (96, 30404), (97, 30413), (105, 30467), (108, 30494), (110, 30524), (116, 30578), (124, 30650), (143, 30836), (162, 30956), (165, 30977), (169, 30995), (172, 31010), (180, 31040), (189, 31070), (192, 31106), (193, 31109), (196, 31145),

Gene: Gorge_30 Start: 26480, Stop: 27751, Start Num: 11

Candidate Starts for Gorge_30:

(Start: 11 @26480 has 66 MA's), (27, 26597), (35, 26669), (44, 26786), (46, 26789), (56, 26867), (66, 26948), (75, 26990), (83, 27068), (101, 27194), (113, 27299), (115, 27314), (120, 27356), (124, 27392), (125, 27395), (131, 27446), (132, 27455), (149, 27569), (153, 27611), (157, 27620), (168,

27677), (169, 27680),

Gene: Guppsters_32 Start: 26753, Stop: 28045, Start Num: 11

Candidate Starts for Guppsters_32:

(Start: 11 @26753 has 66 MA's), (27, 26873), (35, 26945), (44, 27062), (46, 27065), (55, 27119), (56, 27143), (66, 27224), (75, 27266), (83, 27344), (101, 27470), (102, 27476), (108, 27515), (113, 27575), (115, 27590), (120, 27632), (125, 27671), (128, 27686), (131, 27722), (132, 27731), (149, 27845), (169, 27956),

Gene: Hades_31 Start: 26579, Stop: 27853, Start Num: 11

Candidate Starts for Hades_31:

(1, 26147), (2, 26150), (4, 26303), (Start: 11 @26579 has 66 MA's), (27, 26699), (35, 26771), (44, 26888), (46, 26891), (56, 26969), (66, 27050), (75, 27092), (83, 27170), (101, 27296), (102, 27302), (103, 27305), (115, 27416), (120, 27458), (124, 27494), (128, 27512), (131, 27548), (132, 27557), (149, 27671), (153, 27713), (157, 27722), (168, 27779), (169, 27782),

Gene: IPHane7_35 Start: 29799, Stop: 31166, Start Num: 19

Candidate Starts for IPHane7_35:

(Start: 19 @29799 has 14 MA's), (25, 29856), (28, 29883), (33, 29922), (45, 30060), (50, 30084), (58, 30162), (59, 30168), (60, 30171), (69, 30246), (89, 30378), (96, 30405), (97, 30414), (105, 30468), (108, 30495), (110, 30525), (116, 30579), (124, 30651), (143, 30837), (162, 30957), (165, 30978), (169, 30996), (172, 31011), (180, 31041), (189, 31071), (192, 31107), (193, 31110), (196, 31146),

Gene: Inventum_30 Start: 26444, Stop: 27607, Start Num: 23

Candidate Starts for Inventum_30:

(Start: 23 @26444 has 15 MA's), (34, 26528), (50, 26678), (56, 26732), (75, 26873), (85, 26951), (101, 27077), (102, 27083), (108, 27122), (113, 27182), (115, 27197), (120, 27239), (124, 27275), (125, 27278), (131, 27329), (132, 27338), (149, 27452),

Gene: IrishSherpFalk_32 Start: 27838, Stop: 29112, Start Num: 11

Candidate Starts for IrishSherpFalk_32:

(Start: 11 @27838 has 66 MA's), (27, 27958), (44, 28147), (46, 28150), (56, 28228), (66, 28309), (75, 28351), (83, 28429), (101, 28555), (102, 28561), (113, 28660), (115, 28675), (120, 28717), (124, 28753), (128, 28771), (131, 28807), (132, 28816), (149, 28930), (153, 28972), (157, 28981), (168, 29038), (169, 29041),

Gene: Izel_34 Start: 29798, Stop: 31165, Start Num: 19

Candidate Starts for Izel_34:

(Start: 19 @29798 has 14 MA's), (25, 29855), (28, 29882), (30, 29897), (31, 29918), (33, 29921), (45, 30059), (50, 30083), (58, 30161), (59, 30167), (60, 30170), (69, 30245), (89, 30377), (96, 30404), (97, 30413), (105, 30467), (108, 30494), (110, 30524), (116, 30578), (124, 30650), (143, 30836), (162, 30956), (165, 30977), (169, 30995), (172, 31010), (180, 31040), (189, 31070), (192, 31106), (193, 31109), (196, 31145),

Gene: James_30 Start: 26476, Stop: 27711, Start Num: 11

Candidate Starts for James_30:

(Start: 11 @26476 has 66 MA's), (27, 26593), (35, 26665), (44, 26782), (46, 26785), (56, 26863), (66, 26944), (75, 26986), (83, 27064), (101, 27190), (115, 27310), (120, 27352), (124, 27388), (125, 27391), (131, 27442), (132, 27451), (149, 27565),

Gene: Job42_34 Start: 28216, Stop: 29517, Start Num: 11

Candidate Starts for Job42_34:

(Start: 11 @28216 has 66 MA's), (27, 28336), (35, 28408), (44, 28525), (46, 28528), (56, 28606), (66, 28687), (75, 28738), (98, 28915), (101, 28957), (103, 28966), (117, 29104), (149, 29335), (153, 29377), (157, 29386), (168, 29443), (169, 29446),

Gene: KristaRAM_31 Start: 27175, Stop: 28344, Start Num: 23

Candidate Starts for KristaRAM_31:

(6, 26902), (7, 26905), (Start: 23 @27175 has 15 MA's), (34, 27259), (50, 27409), (56, 27463), (75, 27604), (98, 27781), (101, 27823), (103, 27832), (117, 27970), (169, 28312), (175, 28333),

Gene: Kumao_37 Start: 32402, Stop: 33853, Start Num: 11

Candidate Starts for Kumao_37:

(Start: 11 @32402 has 66 MA's), (26, 32510), (27, 32519), (46, 32714), (76, 32951), (87, 33023), (94, 33071), (99, 33101), (119, 33278), (122, 33314), (135, 33422), (140, 33467), (142, 33500), (147, 33542), (160, 33626), (164, 33656), (165, 33665), (167, 33677), (169, 33683), (178, 33719), (182, 33728), (185, 33737), (190, 33776), (193, 33806), (197, 33848),

Gene: Labelle_40 Start: 33850, Stop: 35241, Start Num: 13

Candidate Starts for Labelle_40:

(Start: 13 @33850 has 4 MA's), (22, 33889), (24, 33925), (33, 33985), (37, 34015), (48, 34132), (52, 34156), (65, 34273), (70, 34318), (79, 34393), (81, 34402), (93, 34489), (104, 34561), (112, 34648), (115, 34666), (121, 34738), (124, 34750), (131, 34804), (133, 34816), (135, 34840), (143, 34918), (146, 34951), (150, 34966), (159, 35035), (166, 35074), (177, 35113), (181, 35134), (195, 35233),

Gene: LilSpotty_31 Start: 23805, Stop: 24962, Start Num: 23

Candidate Starts for LilSpotty_31:

(Start: 23 @23805 has 15 MA's), (34, 23889), (50, 24039), (56, 24093), (68, 24186), (75, 24237), (85, 24315), (101, 24441), (102, 24447), (105, 24459), (115, 24561), (120, 24603), (132, 24702), (149, 24816),

Gene: LilhomieP_34 Start: 29799, Stop: 31166, Start Num: 19

Candidate Starts for LilhomieP_34:

(Start: 19 @29799 has 14 MA's), (25, 29856), (28, 29883), (33, 29922), (45, 30060), (50, 30084), (58, 30162), (59, 30168), (60, 30171), (69, 30246), (89, 30378), (96, 30405), (97, 30414), (105, 30468), (108, 30495), (110, 30525), (116, 30579), (124, 30651), (143, 30837), (162, 30957), (165, 30978), (169, 30996), (172, 31011), (180, 31041), (189, 31071), (192, 31107), (193, 31110), (196, 31146),

Gene: LittleShirley_33 Start: 27885, Stop: 29159, Start Num: 11

Candidate Starts for LittleShirley_33:

(Start: 11 @27885 has 66 MA's), (27, 28005), (35, 28077), (44, 28194), (46, 28197), (56, 28275), (66, 28356), (75, 28398), (83, 28476), (101, 28602), (102, 28608), (103, 28611), (108, 28647), (115, 28722), (120, 28764), (124, 28800), (125, 28803), (131, 28854), (132, 28863), (149, 28977), (153, 29019), (157, 29028), (168, 29085), (169, 29088),

Gene: LunaBlu_32 Start: 26697, Stop: 27944, Start Num: 11

Candidate Starts for LunaBlu_32:

(Start: 11 @26697 has 66 MA's), (27, 26817), (35, 26889), (44, 27006), (46, 27009), (56, 27087), (66, 27168), (75, 27210), (83, 27288), (101, 27414), (102, 27420), (108, 27459), (113, 27519), (115, 27534), (120, 27576), (124, 27612), (125, 27615), (131, 27666), (132, 27675), (149, 27789), (153, 27831), (157, 27840), (169, 27900),

Gene: Madruga_39 Start: 33518, Stop: 34909, Start Num: 13

Candidate Starts for Madruga_39:

(Start: 13 @33518 has 4 MA's), (22, 33557), (24, 33593), (33, 33653), (37, 33683), (48, 33800), (52, 33824), (65, 33941), (70, 33986), (79, 34061), (81, 34070), (93, 34157), (104, 34229), (112, 34316), (115, 34334), (121, 34406), (124, 34418), (131, 34472), (133, 34484), (135, 34508), (143, 34586), (146, 34619), (150, 34634), (159, 34703), (166, 34742), (177, 34781), (181, 34802), (195, 34901),

Gene: Mahavrat_30 Start: 26287, Stop: 27558, Start Num: 11

Candidate Starts for Mahavrat_30:

(Start: 11 @26287 has 66 MA's), (27, 26404), (35, 26476), (44, 26593), (46, 26596), (56, 26674), (66, 26755), (75, 26797), (83, 26875), (101, 27001), (102, 27007), (110, 27076), (115, 27121), (120, 27163), (124, 27199), (131, 27253), (132, 27262), (149, 27376), (153, 27418), (157, 27427), (168, 27484), (169, 27487),

Gene: Marker_31 Start: 26193, Stop: 27383, Start Num: 23

Candidate Starts for Marker_31:

(6, 25920), (7, 25923), (Start: 23 @26193 has 15 MA's), (34, 26277), (50, 26427), (56, 26481), (75, 26622), (85, 26700), (101, 26826), (102, 26832), (108, 26871), (113, 26931), (115, 26946), (120, 26988), (124, 27024), (125, 27027), (128, 27042), (131, 27078), (132, 27087), (149, 27201), (153, 27243), (157, 27252), (168, 27309), (169, 27312),

Gene: Mattes_30 Start: 26476, Stop: 27711, Start Num: 11

Candidate Starts for Mattes_30:

(Start: 11 @26476 has 66 MA's), (27, 26593), (35, 26665), (44, 26782), (46, 26785), (56, 26863), (66, 26944), (75, 26986), (83, 27064), (101, 27190), (115, 27310), (120, 27352), (124, 27388), (125, 27391), (131, 27442), (132, 27451), (149, 27565),

Gene: MinionDave_32 Start: 26855, Stop: 28102, Start Num: 11

Candidate Starts for MinionDave_32:

(Start: 11 @26855 has 66 MA's), (27, 26975), (35, 27047), (44, 27164), (46, 27167), (56, 27245), (66, 27326), (75, 27368), (83, 27446), (101, 27572), (102, 27578), (108, 27617), (113, 27677), (115, 27692), (120, 27734), (124, 27770), (125, 27773), (131, 27824), (132, 27833), (149, 27947), (153, 27989), (157, 27998), (169, 28058),

Gene: Minnie_32 Start: 27202, Stop: 28503, Start Num: 11

Candidate Starts for Minnie_32:

(Start: 11 @27202 has 66 MA's), (27, 27322), (35, 27394), (44, 27511), (46, 27514), (56, 27592), (66, 27673), (75, 27724), (98, 27901), (101, 27943), (103, 27952), (117, 28090), (149, 28321), (153, 28363), (157, 28372), (168, 28429), (169, 28432),

Gene: MisterCuddles_31 Start: 26444, Stop: 27691, Start Num: 11

Candidate Starts for MisterCuddles_31:

(Start: 11 @26444 has 66 MA's), (27, 26564), (35, 26636), (44, 26753), (46, 26756), (56, 26834), (66, 26915), (75, 26957), (83, 27035), (101, 27161), (108, 27206), (113, 27266), (115, 27281), (120, 27323), (124, 27359), (131, 27413), (132, 27422), (149, 27536), (169, 27647),

Gene: Mozy_31 Start: 26391, Stop: 27581, Start Num: 23

Candidate Starts for Mozy_31:

(Start: 23 @26391 has 15 MA's), (34, 26475), (50, 26625), (56, 26679), (68, 26772), (75, 26820), (85, 26898), (101, 27024), (102, 27030), (108, 27069), (115, 27144), (120, 27186), (124, 27222), (131, 27276), (132, 27285), (149, 27399), (153, 27441), (157, 27450), (168, 27507), (169, 27510),

Gene: MrMagoo_40 Start: 30898, Stop: 32313, Start Num: 10

Candidate Starts for MrMagoo_40:

(Start: 10 @30898 has 9 MA's), (15, 30952), (16, 30958), (21, 30988), (25, 31024), (45, 31225), (51, 31255), (54, 31273), (62, 31324), (63, 31339), (73, 31411), (75, 31417), (89, 31528), (96, 31555), (98, 31570), (108, 31645), (111, 31678), (116, 31729), (126, 31807), (143, 31984), (147, 32008), (148, 32011), (162, 32104), (165, 32125), (172, 32158), (189, 32218), (194, 32281),

Gene: Mufasa_29 Start: 23220, Stop: 24878, Start Num: 10

Candidate Starts for Mufasa_29:

(Start: 10 @23220 has 9 MA's), (14, 23271), (15, 23274), (21, 23310), (25, 23346), (45, 23547), (51, 23577), (69, 23715), (80, 23787), (82, 23802), (89, 23868), (93, 23889), (107, 23991), (123, 24162), (129, 24198), (130, 24213), (136, 24276), (141, 24345), (147, 24378), (192, 24633), (200, 24783), (202, 24846),

Gene: Mutaforma13_30 Start: 26510, Stop: 27781, Start Num: 11

Candidate Starts for Mutaforma13_30:

(Start: 11 @26510 has 66 MA's), (27, 26627), (35, 26699), (44, 26816), (46, 26819), (66, 26978), (75, 27020), (83, 27098), (101, 27224), (102, 27230), (103, 27233), (108, 27269), (110, 27299), (115, 27344), (120, 27386), (124, 27422), (131, 27476), (132, 27485), (149, 27599), (153, 27641), (157, 27650), (168, 27707), (169, 27710),

Gene: Nanosmite_40 Start: 30775, Stop: 32142, Start Num: 19

Candidate Starts for Nanosmite_40:

(9, 30640), (Start: 19 @30775 has 14 MA's), (25, 30832), (28, 30859), (33, 30898), (45, 31036), (49, 31045), (50, 31060), (59, 31144), (69, 31222), (73, 31240), (89, 31354), (96, 31381), (98, 31396), (108, 31471), (111, 31504), (117, 31573), (118, 31585), (124, 31627), (135, 31735), (143, 31813), (165, 31954), (169, 31972), (172, 31987), (180, 32017), (189, 32047), (193, 32086), (196, 32122),

Gene: Nitzel_31 Start: 27046, Stop: 28239, Start Num: 23

Candidate Starts for Nitzel_31:

(Start: 23 @27046 has 15 MA's), (34, 27130), (50, 27280), (56, 27334), (75, 27475), (85, 27556), (101, 27682), (102, 27688), (108, 27727), (115, 27802), (120, 27844), (124, 27880), (131, 27934), (132, 27943), (149, 28057), (153, 28099), (157, 28108), (168, 28165), (169, 28168),

Gene: OldBen_30 Start: 26283, Stop: 27554, Start Num: 11

Candidate Starts for OldBen_30:

(Start: 11 @26283 has 66 MA's), (27, 26400), (35, 26472), (44, 26589), (46, 26592), (56, 26670), (66, 26751), (75, 26793), (83, 26871), (101, 26997), (102, 27003), (103, 27006), (115, 27117), (120, 27159), (125, 27198), (128, 27213), (131, 27249), (132, 27258), (149, 27372), (153, 27414), (168, 27480), (169, 27483),

Gene: OlympiaSaint_30 Start: 26699, Stop: 27970, Start Num: 11

Candidate Starts for OlympiaSaint_30:

(Start: 11 @26699 has 66 MA's), (27, 26816), (35, 26888), (44, 27005), (46, 27008), (56, 27086), (66, 27167), (75, 27209), (83, 27287), (101, 27413), (113, 27518), (115, 27533), (120, 27575), (124, 27611), (125, 27614), (131, 27665), (132, 27674), (149, 27788), (153, 27830), (157, 27839), (168, 27896), (169, 27899),

Gene: Ovechkin_30 Start: 26501, Stop: 27664, Start Num: 23

Candidate Starts for Ovechkin_30:

(6, 26228), (7, 26231), (Start: 23 @26501 has 15 MA's), (34, 26585), (50, 26735), (56, 26789), (75, 26930), (85, 27008), (101, 27134), (102, 27140), (108, 27179), (113, 27239), (115, 27254), (120, 27296), (124, 27332), (125, 27335), (128, 27350), (131, 27386), (132, 27395), (149, 27509), (169, 27620),

Gene: Patience_41 Start: 34399, Stop: 35790, Start Num: 13

Candidate Starts for Patience_41:

(Start: 13 @34399 has 4 MA's), (22, 34438), (24, 34474), (33, 34534), (37, 34564), (48, 34681), (52, 34705), (65, 34822), (70, 34867), (79, 34942), (81, 34951), (93, 35038), (104, 35110), (112, 35197), (115, 35215), (121, 35287), (124, 35299), (131, 35353), (133, 35365), (135, 35389), (143, 35467), (146, 35500), (150, 35515), (159, 35584), (166, 35623), (177, 35662), (181, 35683), (195, 35782),

Gene: PegLeg_35 Start: 29798, Stop: 31165, Start Num: 19

Candidate Starts for PegLeg_35:

(Start: 19 @29798 has 14 MA's), (25, 29855), (28, 29882), (33, 29921), (45, 30059), (50, 30083), (58, 30161), (59, 30167), (60, 30170), (69, 30245), (89, 30377), (96, 30404), (97, 30413), (105, 30467), (108, 30494), (110, 30524), (116, 30578), (124, 30650), (143, 30836), (162, 30956), (165, 30977), (169, 30995), (172, 31010), (180, 31040), (189, 31070), (192, 31106), (193, 31109), (196, 31145),

Gene: Philus_30 Start: 26322, Stop: 27593, Start Num: 11

Candidate Starts for Philus_30:

(Start: 11 @26322 has 66 MA's), (27, 26439), (35, 26511), (44, 26628), (46, 26631), (56, 26709), (66, 26790), (75, 26832), (83, 26910), (101, 27036), (113, 27141), (115, 27156), (120, 27198), (124, 27234), (125, 27237), (131, 27288), (132, 27297), (149, 27411), (153, 27453), (157, 27462), (168, 27519), (169, 27522),

Gene: Plumbus_32 Start: 26320, Stop: 27594, Start Num: 11

Candidate Starts for Plumbus_32:

(Start: 11 @26320 has 66 MA's), (27, 26440), (35, 26512), (44, 26629), (46, 26632), (56, 26710), (66, 26791), (75, 26833), (83, 26911), (101, 27037), (102, 27043), (103, 27046), (108, 27082), (115, 27157), (120, 27199), (124, 27235), (132, 27298), (149, 27412), (153, 27454), (157, 27463), (168, 27520), (169, 27523),

Gene: Polka14_31 Start: 26869, Stop: 28140, Start Num: 11

Candidate Starts for Polka14_31:

(3, 26596), (5, 26617), (Start: 11 @26869 has 66 MA's), (27, 26986), (35, 27058), (44, 27175), (46, 27178), (56, 27256), (66, 27337), (75, 27379), (83, 27457), (101, 27583), (102, 27589), (103, 27592), (115, 27703), (120, 27745), (125, 27784), (128, 27799), (131, 27835), (132, 27844), (149, 27958), (153, 28000), (157, 28009), (168, 28066), (169, 28069),

Gene: Pollywog_30 Start: 26566, Stop: 27849, Start Num: 11

Candidate Starts for Pollywog_30:

(Start: 11 @26566 has 66 MA's), (27, 26683), (35, 26755), (44, 26872), (46, 26875), (56, 26953), (66, 27034), (75, 27085), (83, 27163), (101, 27289), (102, 27295), (108, 27334), (115, 27409), (120, 27451), (125, 27490), (131, 27541), (132, 27550), (149, 27667), (153, 27709), (157, 27718), (168, 27775), (169, 27778),

Gene: Priscilla_30 Start: 26513, Stop: 27784, Start Num: 11

Candidate Starts for Priscilla_30:

(Start: 11 @26513 has 66 MA's), (27, 26630), (35, 26702), (44, 26819), (46, 26822), (56, 26900), (66, 26981), (75, 27023), (83, 27101), (101, 27227), (113, 27332), (115, 27347), (120, 27389), (124, 27425), (125, 27428), (131, 27479), (132, 27488), (149, 27602), (153, 27644), (157, 27653), (168, 27710), (169, 27713),

Gene: Radiance_30 Start: 26421, Stop: 27692, Start Num: 11

Candidate Starts for Radiance_30:

(Start: 11 @26421 has 66 MA's), (27, 26538), (35, 26610), (44, 26727), (46, 26730), (56, 26808), (66, 26889), (75, 26931), (83, 27009), (101, 27135), (113, 27240), (115, 27255), (120, 27297), (124,

27333), (125, 27336), (131, 27387), (132, 27396), (149, 27510), (153, 27552), (157, 27561), (168, 27618), (169, 27621),

Gene: Ramsey_32 Start: 26518, Stop: 27765, Start Num: 11

Candidate Starts for Ramsey_32:

(Start: 11 @26518 has 66 MA's), (27, 26638), (35, 26710), (44, 26827), (46, 26830), (56, 26908), (66, 26989), (75, 27031), (83, 27109), (101, 27235), (102, 27241), (103, 27244), (115, 27355), (120, 27397), (125, 27436), (128, 27451), (131, 27487), (132, 27496), (149, 27610), (169, 27721),

Gene: Reindeer_35 Start: 30311, Stop: 31678, Start Num: 19

Candidate Starts for Reindeer_35:

(Start: 19 @30311 has 14 MA's), (20, 30320), (25, 30368), (28, 30395), (33, 30434), (45, 30572), (47, 30578), (49, 30581), (50, 30596), (53, 30614), (57, 30668), (58, 30674), (59, 30680), (60, 30683), (69, 30758), (84, 30860), (89, 30890), (96, 30917), (98, 30932), (104, 30977), (105, 30980), (108, 31007), (111, 31040), (114, 31076), (117, 31109), (124, 31163), (126, 31169), (129, 31199), (134, 31247), (135, 31271), (143, 31349), (161, 31463), (162, 31469), (165, 31490), (169, 31508), (172, 31523), (189, 31583), (192, 31619), (193, 31622), (196, 31658),

Gene: Rey_40 Start: 31173, Stop: 32588, Start Num: 10

Candidate Starts for Rey_40:

(Start: 10 @31173 has 9 MA's), (15, 31227), (16, 31233), (21, 31263), (25, 31299), (45, 31500), (51, 31530), (62, 31599), (63, 31614), (69, 31668), (73, 31686), (75, 31692), (89, 31803), (96, 31830), (98, 31845), (111, 31953), (116, 32004), (126, 32082), (143, 32259), (147, 32283), (148, 32286), (161, 32373), (162, 32379), (165, 32400), (172, 32433), (189, 32493), (194, 32556),

Gene: Rialto_34 Start: 28576, Stop: 29850, Start Num: 11

Candidate Starts for Rialto_34:

(Start: 11 @28576 has 66 MA's), (27, 28696), (35, 28768), (44, 28885), (46, 28888), (56, 28966), (66, 29047), (75, 29089), (83, 29167), (101, 29293), (102, 29299), (103, 29302), (108, 29338), (115, 29413), (120, 29455), (124, 29491), (125, 29494), (131, 29545), (132, 29554), (149, 29668), (153, 29710), (157, 29719), (168, 29776), (169, 29779),

Gene: Rita_31 Start: 26482, Stop: 27774, Start Num: 11

Candidate Starts for Rita_31:

(Start: 11 @26482 has 66 MA's), (27, 26602), (44, 26791), (46, 26794), (56, 26872), (66, 26953), (75, 26995), (83, 27073), (101, 27199), (102, 27205), (108, 27244), (113, 27304), (115, 27319), (120, 27361), (124, 27397), (125, 27400), (128, 27415), (131, 27451), (132, 27460), (149, 27574), (169, 27685),

Gene: RitaG_31 Start: 26686, Stop: 27960, Start Num: 11

Candidate Starts for RitaG_31:

(Start: 11 @26686 has 66 MA's), (27, 26806), (44, 26995), (46, 26998), (56, 27076), (66, 27157), (75, 27199), (83, 27277), (101, 27403), (102, 27409), (108, 27448), (113, 27508), (115, 27523), (118, 27559), (120, 27565), (124, 27601), (128, 27619), (131, 27655), (132, 27664), (149, 27778), (153, 27820), (168, 27886), (169, 27889),

Gene: Royals2015_30 Start: 26424, Stop: 27614, Start Num: 23

Candidate Starts for Royals2015_30:

(6, 26151), (8, 26172), (Start: 23 @26424 has 15 MA's), (34, 26508), (50, 26658), (56, 26712), (68, 26805), (75, 26853), (85, 26931), (101, 27057), (102, 27063), (108, 27102), (113, 27162), (115, 27177), (120, 27219), (124, 27255), (125, 27258), (131, 27309), (132, 27318), (149, 27432), (153, 27474), (157, 27483), (168, 27540), (169, 27543),

Gene: Ruby_31 Start: 26444, Stop: 27691, Start Num: 11

Candidate Starts for Ruby_31:

(Start: 11 @26444 has 66 MA's), (27, 26564), (35, 26636), (44, 26753), (46, 26756), (56, 26834), (66, 26915), (75, 26957), (83, 27035), (101, 27161), (108, 27206), (113, 27266), (115, 27281), (120, 27323), (124, 27359), (131, 27413), (132, 27422), (149, 27536), (169, 27647),

Gene: Saal_30 Start: 26300, Stop: 27571, Start Num: 11

Candidate Starts for Saal_30:

(Start: 11 @26300 has 66 MA's), (27, 26417), (35, 26489), (44, 26606), (46, 26609), (56, 26687), (66, 26768), (75, 26810), (83, 26888), (101, 27014), (113, 27119), (115, 27134), (120, 27176), (124, 27212), (125, 27215), (131, 27266), (132, 27275), (149, 27389), (153, 27431), (157, 27440), (168, 27497), (169, 27500),

Gene: Sabbb_31 Start: 26645, Stop: 27916, Start Num: 11

Candidate Starts for Sabbb_31:

(Start: 11 @26645 has 66 MA's), (27, 26762), (35, 26834), (44, 26951), (46, 26954), (56, 27032), (66, 27113), (75, 27155), (83, 27233), (93, 27287), (101, 27359), (115, 27479), (120, 27521), (124, 27557), (131, 27611), (132, 27620), (149, 27734), (153, 27776), (157, 27785), (168, 27842), (169, 27845),

Gene: Sandalphon_31 Start: 27031, Stop: 28302, Start Num: 11

Candidate Starts for Sandalphon_31:

(Start: 11 @27031 has 66 MA's), (27, 27148), (35, 27220), (44, 27337), (46, 27340), (56, 27418), (66, 27499), (75, 27541), (83, 27619), (101, 27745), (102, 27751), (103, 27754), (115, 27865), (120, 27907), (125, 27946), (128, 27961), (131, 27997), (132, 28006), (149, 28120), (153, 28162), (168, 28228), (169, 28231),

Gene: Sarma624_26 Start: 22498, Stop: 23733, Start Num: 11

Candidate Starts for Sarma624_26:

(Start: 11 @22498 has 66 MA's), (27, 22618), (35, 22690), (44, 22807), (46, 22810), (56, 22888), (66, 22969), (75, 23011), (83, 23089), (101, 23215), (102, 23221), (108, 23260), (113, 23320), (115, 23335), (120, 23377), (124, 23413), (125, 23416), (131, 23467), (132, 23476), (149, 23590), (169, 23701), (174, 23722),

Gene: Sassafras_30 Start: 26444, Stop: 27607, Start Num: 23

Candidate Starts for Sassafras_30:

(Start: 23 @26444 has 15 MA's), (34, 26528), (50, 26678), (56, 26732), (75, 26873), (85, 26951), (101, 27077), (102, 27083), (108, 27122), (113, 27182), (115, 27197), (120, 27239), (124, 27275), (125, 27278), (131, 27329), (132, 27338), (149, 27452),

Gene: SimranZ1_33 Start: 26526, Stop: 27818, Start Num: 11

Candidate Starts for SimranZ1_33:

(Start: 11 @26526 has 66 MA's), (27, 26646), (35, 26718), (44, 26835), (46, 26838), (56, 26916), (66, 26997), (75, 27039), (98, 27216), (101, 27258), (103, 27267), (120, 27423), (149, 27636), (153, 27678), (157, 27687), (168, 27744), (169, 27747),

Gene: Skinny_36 Start: 30228, Stop: 31595, Start Num: 19

Candidate Starts for Skinny_36:

(Start: 19 @30228 has 14 MA's), (25, 30285), (28, 30312), (33, 30351), (45, 30489), (50, 30513), (58, 30591), (59, 30597), (60, 30600), (69, 30675), (89, 30807), (96, 30834), (97, 30843), (105, 30897), (108, 30924), (110, 30954), (116, 31008), (124, 31080), (143, 31266), (162, 31386), (165, 31407), (169, 31425), (172, 31440), (180, 31470), (189, 31500), (192, 31536), (193, 31539), (196, 31575),

Gene: SlimJimmy_34 Start: 29782, Stop: 31149, Start Num: 19

Candidate Starts for SlimJimmy_34:

(Start: 19 @29782 has 14 MA's), (25, 29839), (28, 29866), (30, 29881), (31, 29902), (33, 29905), (45, 30043), (50, 30067), (58, 30145), (59, 30151), (60, 30154), (69, 30229), (89, 30361), (96, 30388), (97, 30397), (105, 30451), (108, 30478), (110, 30508), (116, 30562), (124, 30634), (143, 30820), (162, 30940), (165, 30961), (169, 30979), (172, 30994), (180, 31024), (189, 31054), (192, 31090), (193, 31093), (196, 31129),

Gene: Sparkdehlily_30 Start: 26346, Stop: 27617, Start Num: 11

Candidate Starts for Sparkdehlily_30:

(Start: 11 @26346 has 66 MA's), (27, 26463), (35, 26535), (44, 26652), (46, 26655), (56, 26733), (66, 26814), (75, 26856), (83, 26934), (101, 27060), (113, 27165), (115, 27180), (120, 27222), (124, 27258), (125, 27261), (131, 27312), (132, 27321), (149, 27435), (153, 27477), (157, 27486), (168, 27543), (169, 27546),

Gene: Spartacus_32 Start: 26738, Stop: 28030, Start Num: 11

Candidate Starts for Spartacus_32:

(Start: 11 @26738 has 66 MA's), (27, 26858), (44, 27047), (46, 27050), (56, 27128), (66, 27209), (75, 27251), (83, 27329), (101, 27455), (102, 27461), (108, 27500), (113, 27560), (115, 27575), (118, 27611), (120, 27617), (124, 27653), (128, 27671), (131, 27707), (132, 27716), (149, 27830), (169, 27941),

Gene: Spikelee_32 Start: 26496, Stop: 27770, Start Num: 11

Candidate Starts for Spikelee_32:

(Start: 11 @26496 has 66 MA's), (27, 26616), (35, 26688), (44, 26805), (46, 26808), (56, 26886), (66, 26967), (75, 27009), (83, 27087), (101, 27213), (102, 27219), (103, 27222), (108, 27258), (110, 27288), (113, 27318), (115, 27333), (120, 27375), (124, 27411), (125, 27414), (131, 27465), (132, 27474), (149, 27588), (153, 27630), (157, 27639), (168, 27696), (169, 27699),

Gene: Spoonbill_30 Start: 26510, Stop: 27781, Start Num: 11

Candidate Starts for Spoonbill_30:

(Start: 11 @26510 has 66 MA's), (27, 26627), (35, 26699), (44, 26816), (46, 26819), (56, 26897), (66, 26978), (75, 27020), (83, 27098), (101, 27224), (113, 27329), (115, 27344), (120, 27386), (124, 27422), (125, 27425), (131, 27476), (132, 27485), (149, 27599), (153, 27641), (157, 27650), (168, 27707), (169, 27710),

Gene: Stap_31 Start: 26476, Stop: 27678, Start Num: 23

Candidate Starts for Stap_31:

(Start: 23 @26476 has 15 MA's), (34, 26560), (50, 26710), (56, 26764), (75, 26905), (85, 26983), (101, 27109), (102, 27115), (108, 27154), (113, 27214), (115, 27229), (120, 27271), (124, 27307), (125, 27310), (131, 27361), (132, 27370), (153, 27535), (158, 27553), (169, 27604), (171, 27613),

Gene: SuperGrey_31 Start: 27204, Stop: 28496, Start Num: 11

Candidate Starts for SuperGrey_31:

(Start: 11 @27204 has 66 MA's), (27, 27324), (44, 27513), (46, 27516), (56, 27594), (66, 27675), (75, 27717), (83, 27795), (101, 27921), (102, 27927), (108, 27966), (113, 28026), (115, 28041), (120, 28083), (124, 28119), (125, 28122), (128, 28137), (131, 28173), (132, 28182), (149, 28296), (169, 28407),

Gene: TDanisky_30 Start: 26346, Stop: 27617, Start Num: 11

Candidate Starts for TDanisky_30:

(Start: 11 @26346 has 66 MA's), (27, 26463), (35, 26535), (44, 26652), (46, 26655), (56, 26733), (66, 26814), (75, 26856), (83, 26934), (101, 27060), (113, 27165), (115, 27180), (120, 27222), (124, 27258), (125, 27261), (131, 27312), (132, 27321), (149, 27435), (153, 27477), (157, 27486), (168,

27543), (169, 27546),

Gene: TM4_29 Start: 23341, Stop: 24984, Start Num: 10

Candidate Starts for TM4_29:

(Start: 10 @23341 has 9 MA's), (14, 23392), (15, 23395), (21, 23431), (25, 23467), (45, 23668), (51, 23698), (69, 23836), (80, 23908), (82, 23923), (89, 23989), (91, 23998), (92, 24007), (93, 24010), (107, 24112), (123, 24283), (129, 24319), (130, 24334), (136, 24397), (141, 24466), (147, 24499), (192, 24754), (199, 24886), (200, 24889), (202, 24952),

Gene: ThetaBob_29 Start: 25694, Stop: 27004, Start Num: 11

Candidate Starts for ThetaBob_29:

(Start: 11 @25694 has 66 MA's), (27, 25811), (35, 25883), (44, 26000), (46, 26003), (56, 26081), (66, 26162), (75, 26213), (98, 26390), (101, 26432), (103, 26441), (120, 26597), (149, 26819), (153, 26861), (157, 26870), (163, 26912), (168, 26927), (169, 26930), (170, 26936), (186, 26984),

Gene: Tonenili_272 Start: 147835, Stop: 149253, Start Num: 13

Candidate Starts for Tonenili_272:

(Start: 13 @147835 has 4 MA's), (33, 147988), (39, 148060), (42, 148099), (43, 148111), (46, 148135), (61, 148246), (65, 148288), (108, 148585), (112, 148642), (120, 148702), (135, 148831), (137, 148855), (144, 148918), (145, 148927), (165, 149062), (183, 149131), (184, 149137), (191, 149197),

Gene: Tootsieroll_31 Start: 26372, Stop: 27574, Start Num: 23

Candidate Starts for Tootsieroll_31:

(Start: 23 @26372 has 15 MA's), (34, 26456), (50, 26606), (56, 26660), (75, 26801), (85, 26879), (101, 27005), (102, 27011), (108, 27050), (113, 27110), (115, 27125), (120, 27167), (124, 27203), (125, 27206), (131, 27257), (132, 27266), (153, 27431), (158, 27449), (169, 27500), (171, 27509),

Gene: Totinger_31 Start: 26230, Stop: 27501, Start Num: 11

Candidate Starts for Totinger_31:

(Start: 11 @26230 has 66 MA's), (27, 26347), (35, 26419), (44, 26536), (46, 26539), (56, 26617), (66, 26698), (75, 26740), (83, 26818), (101, 26944), (113, 27049), (115, 27064), (120, 27106), (124, 27142), (125, 27145), (131, 27196), (132, 27205), (149, 27319), (153, 27361), (157, 27370), (168, 27427), (169, 27430),

Gene: TyDawg_35 Start: 29799, Stop: 31166, Start Num: 19

Candidate Starts for TyDawg_35:

(Start: 19 @29799 has 14 MA's), (25, 29856), (28, 29883), (33, 29922), (45, 30060), (50, 30084), (58, 30162), (59, 30168), (60, 30171), (69, 30246), (89, 30378), (96, 30405), (97, 30414), (105, 30468), (108, 30495), (110, 30525), (116, 30579), (124, 30651), (143, 30837), (162, 30957), (165, 30978), (169, 30996), (172, 31011), (180, 31041), (189, 31071), (192, 31107), (193, 31110), (196, 31146),

Gene: VRedHorse_30 Start: 26539, Stop: 27690, Start Num: 23

Candidate Starts for VRedHorse_30:

(6, 26266), (8, 26287), (Start: 23 @26539 has 15 MA's), (34, 26623), (50, 26773), (56, 26827), (75, 26968), (85, 27046), (101, 27172), (102, 27178), (108, 27217), (113, 27277), (115, 27292), (120, 27334), (124, 27370), (125, 27373), (131, 27424), (132, 27433), (149, 27547), (169, 27658), (173, 27676), (175, 27679),

Gene: Velveteen_26 Start: 22498, Stop: 23733, Start Num: 11

Candidate Starts for Velveteen_26:

(Start: 11 @22498 has 66 MA's), (27, 22618), (35, 22690), (44, 22807), (46, 22810), (56, 22888), (66, 22969), (75, 23011), (83, 23089), (101, 23215), (102, 23221), (108, 23260), (113, 23320), (115, 23335), (120, 23377), (124, 23413), (125, 23416), (131, 23467), (132, 23476), (149, 23590), (169,

23701), (174, 23722),

Gene: Whouxphf_31 Start: 26736, Stop: 28010, Start Num: 11

Candidate Starts for Whouxphf_31:

(Start: 11 @26736 has 66 MA's), (27, 26856), (35, 26928), (44, 27045), (46, 27048), (56, 27126), (66, 27207), (75, 27249), (83, 27327), (101, 27453), (102, 27459), (108, 27498), (115, 27573), (120, 27615), (125, 27654), (128, 27669), (131, 27705), (132, 27714), (149, 27828), (153, 27870), (157, 27879), (168, 27936), (169, 27939),

Gene: WillSterrel_32 Start: 27871, Stop: 29145, Start Num: 11

Candidate Starts for WillSterrel_32:

(Start: 11 @27871 has 66 MA's), (27, 27991), (44, 28180), (46, 28183), (56, 28261), (66, 28342), (75, 28384), (83, 28462), (101, 28588), (102, 28594), (113, 28693), (115, 28708), (120, 28750), (124, 28786), (128, 28804), (131, 28840), (132, 28849), (149, 28963), (153, 29005), (157, 29014), (168, 29071), (169, 29074),

Gene: Yoshi_37 Start: 25847, Stop: 27094, Start Num: 17

Candidate Starts for Yoshi_37:

(12, 25826), (Start: 17 @25847 has 2 MA's), (28, 25928), (40, 26060), (41, 26063), (45, 26108), (50, 26132), (64, 26222), (71, 26303), (83, 26384), (93, 26438), (98, 26468), (101, 26510), (102, 26516), (103, 26519), (108, 26555), (115, 26630), (120, 26672), (124, 26708), (125, 26711), (131, 26762), (132, 26771), (152, 26933), (179, 27047), (187, 27071), (188, 27080),