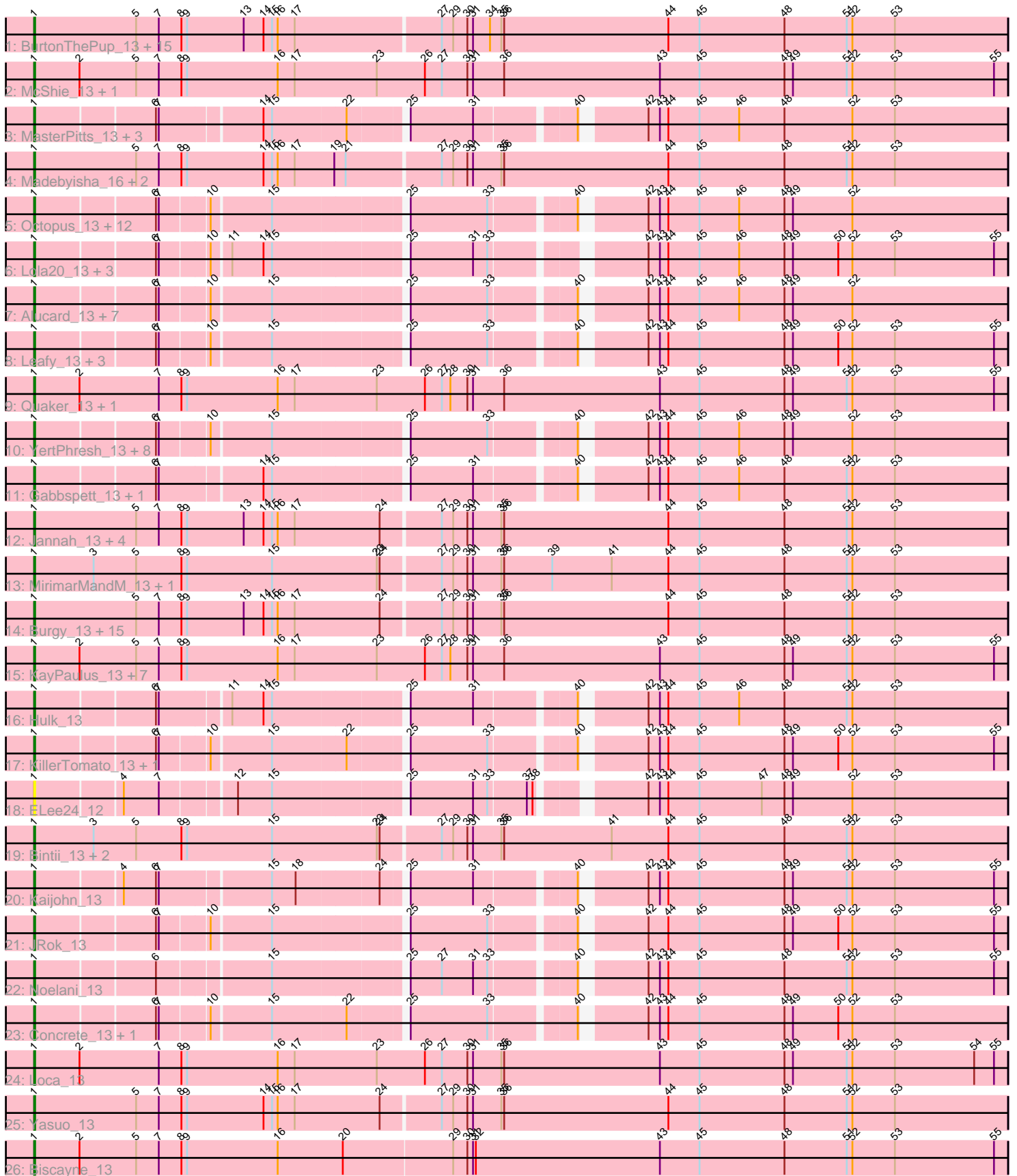


Pham 202798



Note: Tracks are now grouped by subcluster and scaled. Switching in subcluster is indicated by changes in track color. Track scale is now set by default to display the region 30 bp upstream of start 1 to 30 bp downstream of the last possible start. If this default region is judged to be packed too tightly with annotated starts, the track will be further scaled to only show that region of the ORF with annotated starts. This action will be indicated by adding "Zoomed" to the title. For starts, yellow indicates the location of called starts comprised solely of Glimmer/GeneMark auto-annotations, green indicates the location of called starts with at least 1 manual gene annotation.

Pham 202798 Report

This analysis was run 01/18/25 on database version 583.

Pham number 202798 has 113 members, 10 are drafts.

Phages represented in each track:

- Track 1 : BurtonThePup_13, JaimeB_13, LionelHutz_13, Rhogar_13, Owens_13, Slentz_13, Ciel_13, NeumannU_13, BinkBonk_13, Goobery_13, Scrunchy_13, Astro16_13, Majesty_13, BarBear_13, TeddyBoy_13, Eightball_13
- Track 2 : McShie_13, BrokMonster_13
- Track 3 : MasterPitts_13, DirtPie_14, Zahlia_14, DaftyDuck_13
- Track 4 : Madebyisha_16, Jerky_13, VitulaEligans_13
- Track 5 : Octopus_13, Puddles3_14, Bradley2_13, Horacetta_13, Erin_13, PaoPu_13, Aztec_13, Picnic_13, GoldenBlanche_14, Minima_13, ManAs_13, Pondwater_13, Sara_13
- Track 6 : Lola20_13, Baine_14, Anseraureola_13, Cayde6_14
- Track 7 : Alucard_13, EdElric_13, Danimal_13, Gardevoir_13, KyriosFaba_13, JoBros_13, Witch_13, Yubaba_13
- Track 8 : Leafy_13, Oaklynn_13, MrGreen_13, Azizam_13
- Track 9 : Quaker_13, Livingwater_13
- Track 10 : YertPhresh_13, SeaWolves_13, Jahseh_13, Chatham_13, Dooby_13, LemonPepper_13, Gillker_13, Dongwon_13, Myram_14
- Track 11 : Gabbspett_13, Hernandez44_13
- Track 12 : Jannah_13, TimoTea_13, Luxx_13, Charbie_13, Maneater_13
- Track 13 : MirimarMandM_13, PoRanda_13
- Track 14 : Burgy_13, Rhysand_13, Vanisius_13, Josuke_13, SantasSleigh_13, Godfather_13, Danno_13, Scamander_13, Otwor_13, Sage7_13, Cheesecake_13, Kojax4_13, Aries55_13, RoscoWindex_14, Avvas_13, LaviMo_13
- Track 15 : KayPaulus_13, MelBee03_13, Belthelas_13, Douggie_13, Wolfpack_13, Sippinontea_13, Bodhi17_13, Kevanna_13
- Track 16 : Hulk_13
- Track 17 : KillerTomato_13, Bri160_13
- Track 18 : ELee24_12
- Track 19 : Bintii_13, JooneeDee_13, Upsilon_13
- Track 20 : Kaijohn_13
- Track 21 : JRok_13
- Track 22 : Noelani_13
- Track 23 : Concrete_13, BoomRoasted_13
- Track 24 : Loca_13
- Track 25 : Yasuo_13
- Track 26 : Biscayne_13

Summary of Final Annotations (See graph section above for start numbers):

The start number called the most often in the published annotations is 1, it was called in 103 of the 103 non-draft genes in the pham.

Genes that call this "Most Annotated" start:

- Alucard_13, Anseraureola_13, Aries55_13, Astro16_13, Avvas_13, Azizam_13, Aztec_13, Baine_14, BarBear_13, Belthelas_13, BinkBonk_13, Bintii_13, Biscayne_13, Bodhi17_13, BoomRoasted_13, Bradley2_13, Bri160_13, BrokMonster_13, Burgy_13, BurtonThePup_13, Cayde6_14, Charbie_13, Chatham_13, Cheesecake_13, Ciel_13, Concrete_13, DaftyDuck_13, Danimal_13, Danno_13, DirtPie_14, Dongwon_13, Dooby_13, Douggie_13, ELee24_12, EdElric_13, Eightball_13, Erin_13, Gabbspett_13, Gardevoir_13, Gillker_13, Godfather_13, GoldenBlanche_14, Goobery_13, Hernandez44_13, Horacetta_13, Hulk_13, JRok_13, Jahseh_13, JaimeB_13, Jannah_13, Jerky_13, JoBros_13, JooneeDee_13, Josuke_13, Kaijohn_13, KayPaulus_13, Kevanna_13, KillerTomato_13, Kojax4_13, KyriosFaba_13, LaviMo_13, Leafy_13, LemonPepper_13, LionelHutz_13, Livingwater_13, Loca_13, Lola20_13, Luxx_13, Madebyisha_16, Majesty_13, ManAs_13, Maneater_13, MasterPitts_13, McShie_13, MelBee03_13, Minima_13, MirimarMandM_13, MrGreen_13, Myram_14, NeumannU_13, Noelani_13, Oaklynn_13, Octopus_13, Otwor_13, Owens_13, PaoPu_13, Picnic_13, PoRanda_13, Pondwater_13, Puddles3_14, Quaker_13, Rhogar_13, Rhysand_13, RoscoWindex_14, Sage7_13, SantasSleigh_13, Sara_13, Scamander_13, Scrunchy_13, SeaWolves_13, Sippinontea_13, Slentz_13, TeddyBoy_13, TimoTea_13, Upsilon_13, Vanisius_13, VitulaEligans_13, Witch_13, Wolfpack_13, Yasuo_13, YertPhresh_13, Yubaba_13, Zahlia_14,

Genes that have the "Most Annotated" start but do not call it:

-

Genes that do not have the "Most Annotated" start:

-

Summary by start number:

Start 1:

- Found in 113 of 113 (100.0%) of genes in pham
- Manual Annotations of this start: 103 of 103
- Called 100.0% of time when present
- Phage (with cluster) where this start called: Alucard_13 (EE), Anseraureola_13 (EE), Aries55_13 (EE), Astro16_13 (EE), Avvas_13 (EE), Azizam_13 (EE), Aztec_13 (EE), Baine_14 (EE), BarBear_13 (EE), Belthelas_13 (EE), BinkBonk_13 (EE), Bintii_13 (EE), Biscayne_13 (EE), Bodhi17_13 (EE), BoomRoasted_13 (EE), Bradley2_13 (EE), Bri160_13 (EE), BrokMonster_13 (EE), Burgy_13 (EE), BurtonThePup_13 (EE), Cayde6_14 (EE), Charbie_13 (EE), Chatham_13 (EE), Cheesecake_13 (EE), Ciel_13 (EE), Concrete_13 (EE), DaftyDuck_13 (EE), Danimal_13 (EE), Danno_13 (EE), DirtPie_14 (EE), Dongwon_13 (EE), Dooby_13 (EE), Douggie_13 (EE), ELee24_12 (EE), EdElric_13 (EE), Eightball_13 (EE), Erin_13 (EE), Gabbspett_13 (EE), Gardevoir_13 (EE), Gillker_13 (EE), Godfather_13 (EE), GoldenBlanche_14 (EE), Goobery_13 (EE), Hernandez44_13 (EE), Horacetta_13 (EE), Hulk_13 (EE), JRok_13 (EE), Jahseh_13 (EE), JaimeB_13 (EE), Jannah_13 (EE), Jerky_13 (EE), JoBros_13 (EE), JooneeDee_13 (EE), Josuke_13 (EE), Kaijohn_13 (EE),

KayPaulus_13 (EE), Kevanna_13 (EE), KillerTomato_13 (EE), Kojax4_13 (EE), KyriosFaba_13 (EE), LaviMo_13 (EE), Leafy_13 (EE), LemonPepper_13 (EE), LionelHutz_13 (EE), Livingwater_13 (EE), Loca_13 (EE), Lola20_13 (EE), Luxx_13 (EE), Madebyisha_16 (EE), Majesty_13 (EE), ManAs_13 (EE), Maneater_13 (EE), MasterPitts_13 (EE), McShie_13 (EE), MelBee03_13 (EE), Minima_13 (EE), MirimarMandM_13 (EE), MrGreen_13 (EE), Myram_14 (EE), NeumannU_13 (EE), Noelani_13 (EE), Oaklynn_13 (EE), Octopus_13 (EE), Otwor_13 (EE), Owens_13 (EE), PaoPu_13 (EE), Picnic_13 (EE), PoRanda_13 (EE), Pondwater_13 (EE), Puddles3_14 (EE), Quaker_13 (EE), Rhogar_13 (EE), Rhysand_13 (EE), RoscoWindex_14 (EE), Sage7_13 (EE), SantasSleigh_13 (EE), Sara_13 (EE), Scamander_13 (EE), Scrunchy_13 (EE), SeaWolves_13 (EE), Sippinontea_13 (EE), Slentz_13 (EE), TeddyBoy_13 (EE), TimoTea_13 (EE), Upsilon_13 (EE), Vanisius_13 (EE), VitulaEligans_13 (EE), Witch_13 (EE), Wolfpack_13 (EE), Yasuo_13 (EE), YertPhresh_13 (EE), Yubaba_13 (EE), Zahlia_14 (EE),

Summary by clusters:

There is one cluster represented in this pham: EE

Info for manual annotations of cluster EE:

- Start number 1 was manually annotated 103 times for cluster EE.

Gene Information:

Gene: Alucard_13 Start: 9643, Stop: 10602, Start Num: 1

Candidate Starts for Alucard_13:

(Start: 1 @9643 has 103 MA's), (6, 9763), (7, 9766), (10, 9814), (15, 9874), (25, 10003), (33, 10084), (40, 10165), (42, 10222), (43, 10234), (44, 10243), (45, 10276), (46, 10318), (48, 10366), (49, 10375), (52, 10438),

Gene: Anseraureola_13 Start: 9668, Stop: 10627, Start Num: 1

Candidate Starts for Anseraureola_13:

(Start: 1 @9668 has 103 MA's), (6, 9788), (7, 9791), (10, 9839), (11, 9857), (14, 9890), (15, 9899), (25, 10028), (31, 10094), (33, 10109), (42, 10247), (43, 10259), (44, 10268), (45, 10301), (46, 10343), (48, 10391), (49, 10400), (50, 10448), (52, 10463), (53, 10508), (55, 10613),

Gene: Aries55_13 Start: 9654, Stop: 10679, Start Num: 1

Candidate Starts for Aries55_13:

(Start: 1 @9654 has 103 MA's), (5, 9762), (7, 9786), (8, 9810), (9, 9816), (13, 9876), (14, 9897), (15, 9906), (16, 9912), (17, 9930), (24, 10020), (27, 10080), (29, 10092), (30, 10107), (31, 10113), (35, 10143), (36, 10146), (44, 10320), (45, 10353), (48, 10443), (51, 10509), (52, 10515), (53, 10560),

Gene: Astro16_13 Start: 9648, Stop: 10673, Start Num: 1

Candidate Starts for Astro16_13:

(Start: 1 @9648 has 103 MA's), (5, 9756), (7, 9780), (8, 9804), (9, 9810), (13, 9870), (14, 9891), (15, 9900), (16, 9906), (17, 9924), (27, 10074), (29, 10086), (30, 10101), (31, 10107), (34, 10125), (35, 10137), (36, 10140), (44, 10314), (45, 10347), (48, 10437), (51, 10503), (52, 10509), (53, 10554),

Gene: Avvas_13 Start: 9654, Stop: 10679, Start Num: 1

Candidate Starts for Avvas_13:

(Start: 1 @9654 has 103 MA's), (5, 9762), (7, 9786), (8, 9810), (9, 9816), (13, 9876), (14, 9897), (15, 9906), (16, 9912), (17, 9930), (24, 10020), (27, 10080), (29, 10092), (30, 10107), (31, 10113), (35, 10143), (36, 10146), (44, 10320), (45, 10353), (48, 10443), (51, 10509), (52, 10515), (53, 10560),

Gene: Azizam_13 Start: 9636, Stop: 10595, Start Num: 1

Candidate Starts for Azizam_13:

(Start: 1 @9636 has 103 MA's), (6, 9756), (7, 9759), (10, 9807), (15, 9867), (25, 9996), (33, 10077), (40, 10158), (42, 10215), (43, 10227), (44, 10236), (45, 10269), (48, 10359), (49, 10368), (50, 10416), (52, 10431), (53, 10476), (55, 10581),

Gene: Aztec_13 Start: 9642, Stop: 10601, Start Num: 1

Candidate Starts for Aztec_13:

(Start: 1 @9642 has 103 MA's), (6, 9762), (7, 9765), (10, 9813), (15, 9873), (25, 10002), (33, 10083), (40, 10164), (42, 10221), (43, 10233), (44, 10242), (45, 10275), (46, 10317), (48, 10365), (49, 10374), (52, 10437),

Gene: Baine_14 Start: 9643, Stop: 10602, Start Num: 1

Candidate Starts for Baine_14:

(Start: 1 @9643 has 103 MA's), (6, 9763), (7, 9766), (10, 9814), (11, 9832), (14, 9865), (15, 9874), (25, 10003), (31, 10069), (33, 10084), (42, 10222), (43, 10234), (44, 10243), (45, 10276), (46, 10318), (48, 10366), (49, 10375), (50, 10423), (52, 10438), (53, 10483), (55, 10588),

Gene: BarBear_13 Start: 9648, Stop: 10673, Start Num: 1

Candidate Starts for BarBear_13:

(Start: 1 @9648 has 103 MA's), (5, 9756), (7, 9780), (8, 9804), (9, 9810), (13, 9870), (14, 9891), (15, 9900), (16, 9906), (17, 9924), (27, 10074), (29, 10086), (30, 10101), (31, 10107), (34, 10125), (35, 10137), (36, 10140), (44, 10314), (45, 10347), (48, 10437), (51, 10503), (52, 10509), (53, 10554),

Gene: Belthelas_13 Start: 9692, Stop: 10723, Start Num: 1

Candidate Starts for Belthelas_13:

(Start: 1 @9692 has 103 MA's), (2, 9740), (5, 9800), (7, 9824), (8, 9848), (9, 9854), (16, 9950), (17, 9968), (23, 10055), (26, 10106), (27, 10124), (28, 10133), (30, 10151), (31, 10157), (36, 10190), (43, 10355), (45, 10397), (48, 10487), (49, 10496), (51, 10553), (52, 10559), (53, 10604), (55, 10709),

Gene: BinkBonk_13 Start: 9648, Stop: 10673, Start Num: 1

Candidate Starts for BinkBonk_13:

(Start: 1 @9648 has 103 MA's), (5, 9756), (7, 9780), (8, 9804), (9, 9810), (13, 9870), (14, 9891), (15, 9900), (16, 9906), (17, 9924), (27, 10074), (29, 10086), (30, 10101), (31, 10107), (34, 10125), (35, 10137), (36, 10140), (44, 10314), (45, 10347), (48, 10437), (51, 10503), (52, 10509), (53, 10554),

Gene: Bintii_13 Start: 9674, Stop: 10699, Start Num: 1

Candidate Starts for Bintii_13:

(Start: 1 @9674 has 103 MA's), (3, 9737), (5, 9782), (8, 9830), (9, 9836), (15, 9926), (23, 10037), (24, 10040), (27, 10100), (29, 10112), (30, 10127), (31, 10133), (35, 10163), (36, 10166), (41, 10280), (44, 10340), (45, 10373), (48, 10463), (51, 10529), (52, 10535), (53, 10580),

Gene: Biscayne_13 Start: 9710, Stop: 10738, Start Num: 1

Candidate Starts for Biscayne_13:

(Start: 1 @9710 has 103 MA's), (2, 9758), (5, 9818), (7, 9842), (8, 9866), (9, 9872), (16, 9968), (20, 10037), (29, 10151), (30, 10166), (31, 10172), (32, 10175), (43, 10370), (45, 10412), (48, 10502), (51, 10568), (52, 10574), (53, 10619), (55, 10724),

Gene: Bodhi17_13 Start: 9635, Stop: 10666, Start Num: 1

Candidate Starts for Bodhi17_13:

(Start: 1 @9635 has 103 MA's), (2, 9683), (5, 9743), (7, 9767), (8, 9791), (9, 9797), (16, 9893), (17, 9911), (23, 9998), (26, 10049), (27, 10067), (28, 10076), (30, 10094), (31, 10100), (36, 10133), (43, 10298), (45, 10340), (48, 10430), (49, 10439), (51, 10496), (52, 10502), (53, 10547), (55, 10652),

Gene: BoomRoasted_13 Start: 9689, Stop: 10648, Start Num: 1

Candidate Starts for BoomRoasted_13:

(Start: 1 @9689 has 103 MA's), (6, 9809), (7, 9812), (10, 9860), (15, 9920), (22, 9995), (25, 10049), (33, 10130), (40, 10211), (42, 10268), (43, 10280), (44, 10289), (45, 10322), (48, 10412), (49, 10421), (50, 10469), (52, 10484), (53, 10529),

Gene: Bradley2_13 Start: 9641, Stop: 10600, Start Num: 1

Candidate Starts for Bradley2_13:

(Start: 1 @9641 has 103 MA's), (6, 9761), (7, 9764), (10, 9812), (15, 9872), (25, 10001), (33, 10082), (40, 10163), (42, 10220), (43, 10232), (44, 10241), (45, 10274), (46, 10316), (48, 10364), (49, 10373), (52, 10436),

Gene: Bri160_13 Start: 9688, Stop: 10647, Start Num: 1

Candidate Starts for Bri160_13:

(Start: 1 @9688 has 103 MA's), (6, 9808), (7, 9811), (10, 9859), (15, 9919), (22, 9994), (25, 10048), (33, 10129), (40, 10210), (42, 10267), (43, 10279), (44, 10288), (45, 10321), (48, 10411), (49, 10420), (50, 10468), (52, 10483), (53, 10528), (55, 10633),

Gene: BrokMonster_13 Start: 9631, Stop: 10662, Start Num: 1

Candidate Starts for BrokMonster_13:

(Start: 1 @9631 has 103 MA's), (2, 9679), (5, 9739), (7, 9763), (8, 9787), (9, 9793), (16, 9889), (17, 9907), (23, 9994), (26, 10045), (27, 10063), (30, 10090), (31, 10096), (36, 10129), (43, 10294), (45, 10336), (48, 10426), (49, 10435), (51, 10492), (52, 10498), (53, 10543), (55, 10648),

Gene: Burgy_13 Start: 9654, Stop: 10679, Start Num: 1

Candidate Starts for Burgy_13:

(Start: 1 @9654 has 103 MA's), (5, 9762), (7, 9786), (8, 9810), (9, 9816), (13, 9876), (14, 9897), (15, 9906), (16, 9912), (17, 9930), (24, 10020), (27, 10080), (29, 10092), (30, 10107), (31, 10113), (35, 10143), (36, 10146), (44, 10320), (45, 10353), (48, 10443), (51, 10509), (52, 10515), (53, 10560),

Gene: BurtonThePup_13 Start: 9648, Stop: 10673, Start Num: 1

Candidate Starts for BurtonThePup_13:

(Start: 1 @9648 has 103 MA's), (5, 9756), (7, 9780), (8, 9804), (9, 9810), (13, 9870), (14, 9891), (15, 9900), (16, 9906), (17, 9924), (27, 10074), (29, 10086), (30, 10101), (31, 10107), (34, 10125), (35, 10137), (36, 10140), (44, 10314), (45, 10347), (48, 10437), (51, 10503), (52, 10509), (53, 10554),

Gene: Cayde6_14 Start: 9643, Stop: 10602, Start Num: 1

Candidate Starts for Cayde6_14:

(Start: 1 @9643 has 103 MA's), (6, 9763), (7, 9766), (10, 9814), (11, 9832), (14, 9865), (15, 9874), (25, 10003), (31, 10069), (33, 10084), (42, 10222), (43, 10234), (44, 10243), (45, 10276), (46, 10318), (48, 10366), (49, 10375), (50, 10423), (52, 10438), (53, 10483), (55, 10588),

Gene: Charbie_13 Start: 9630, Stop: 10655, Start Num: 1

Candidate Starts for Charbie_13:

(Start: 1 @9630 has 103 MA's), (5, 9738), (7, 9762), (8, 9786), (9, 9792), (13, 9852), (14, 9873), (15, 9882), (16, 9888), (17, 9906), (24, 9996), (27, 10056), (29, 10068), (30, 10083), (31, 10089), (35, 10119), (36, 10122), (44, 10296), (45, 10329), (48, 10419), (51, 10485), (52, 10491), (53, 10536),

Gene: Chatham_13 Start: 9642, Stop: 10601, Start Num: 1

Candidate Starts for Chatham_13:

(Start: 1 @9642 has 103 MA's), (6, 9762), (7, 9765), (10, 9813), (15, 9873), (25, 10002), (33, 10083), (40, 10164), (42, 10221), (43, 10233), (44, 10242), (45, 10275), (46, 10317), (48, 10365), (49, 10374), (52, 10437), (53, 10482),

Gene: Cheesecake_13 Start: 9654, Stop: 10679, Start Num: 1

Candidate Starts for Cheesecake_13:

(Start: 1 @9654 has 103 MA's), (5, 9762), (7, 9786), (8, 9810), (9, 9816), (13, 9876), (14, 9897), (15, 9906), (16, 9912), (17, 9930), (24, 10020), (27, 10080), (29, 10092), (30, 10107), (31, 10113), (35, 10143), (36, 10146), (44, 10320), (45, 10353), (48, 10443), (51, 10509), (52, 10515), (53, 10560),

Gene: Ciel_13 Start: 9648, Stop: 10673, Start Num: 1

Candidate Starts for Ciel_13:

(Start: 1 @9648 has 103 MA's), (5, 9756), (7, 9780), (8, 9804), (9, 9810), (13, 9870), (14, 9891), (15, 9900), (16, 9906), (17, 9924), (27, 10074), (29, 10086), (30, 10101), (31, 10107), (34, 10125), (35, 10137), (36, 10140), (44, 10314), (45, 10347), (48, 10437), (51, 10503), (52, 10509), (53, 10554),

Gene: Concrete_13 Start: 9689, Stop: 10648, Start Num: 1

Candidate Starts for Concrete_13:

(Start: 1 @9689 has 103 MA's), (6, 9809), (7, 9812), (10, 9860), (15, 9920), (22, 9995), (25, 10049), (33, 10130), (40, 10211), (42, 10268), (43, 10280), (44, 10289), (45, 10322), (48, 10412), (49, 10421), (50, 10469), (52, 10484), (53, 10529),

Gene: DaftyDuck_13 Start: 9648, Stop: 10610, Start Num: 1

Candidate Starts for DaftyDuck_13:

(Start: 1 @9648 has 103 MA's), (6, 9768), (7, 9771), (14, 9873), (15, 9882), (22, 9957), (25, 10011), (31, 10077), (40, 10173), (42, 10230), (43, 10242), (44, 10251), (45, 10284), (46, 10326), (48, 10374), (52, 10446), (53, 10491),

Gene: Danimal_13 Start: 9642, Stop: 10601, Start Num: 1

Candidate Starts for Danimal_13:

(Start: 1 @9642 has 103 MA's), (6, 9762), (7, 9765), (10, 9813), (15, 9873), (25, 10002), (33, 10083), (40, 10164), (42, 10221), (43, 10233), (44, 10242), (45, 10275), (46, 10317), (48, 10365), (49, 10374), (52, 10437),

Gene: Danno_13 Start: 9654, Stop: 10679, Start Num: 1

Candidate Starts for Danno_13:

(Start: 1 @9654 has 103 MA's), (5, 9762), (7, 9786), (8, 9810), (9, 9816), (13, 9876), (14, 9897), (15, 9906), (16, 9912), (17, 9930), (24, 10020), (27, 10080), (29, 10092), (30, 10107), (31, 10113), (35, 10143), (36, 10146), (44, 10320), (45, 10353), (48, 10443), (51, 10509), (52, 10515), (53, 10560),

Gene: DirtPie_14 Start: 9741, Stop: 10703, Start Num: 1

Candidate Starts for DirtPie_14:

(Start: 1 @9741 has 103 MA's), (6, 9861), (7, 9864), (14, 9966), (15, 9975), (22, 10050), (25, 10104), (31, 10170), (40, 10266), (42, 10323), (43, 10335), (44, 10344), (45, 10377), (46, 10419), (48, 10467), (52, 10539), (53, 10584),

Gene: Dongwon_13 Start: 9642, Stop: 10601, Start Num: 1

Candidate Starts for Dongwon_13:

(Start: 1 @9642 has 103 MA's), (6, 9762), (7, 9765), (10, 9813), (15, 9873), (25, 10002), (33, 10083), (40, 10164), (42, 10221), (43, 10233), (44, 10242), (45, 10275), (46, 10317), (48, 10365), (49, 10374), (52, 10437), (53, 10482),

Gene: Dooby_13 Start: 9642, Stop: 10601, Start Num: 1

Candidate Starts for Dooby_13:

(Start: 1 @9642 has 103 MA's), (6, 9762), (7, 9765), (10, 9813), (15, 9873), (25, 10002), (33, 10083), (40, 10164), (42, 10221), (43, 10233), (44, 10242), (45, 10275), (46, 10317), (48, 10365), (49, 10374), (52, 10437), (53, 10482),

Gene: Douggie_13 Start: 9635, Stop: 10666, Start Num: 1

Candidate Starts for Douggie_13:

(Start: 1 @9635 has 103 MA's), (2, 9683), (5, 9743), (7, 9767), (8, 9791), (9, 9797), (16, 9893), (17, 9911), (23, 9998), (26, 10049), (27, 10067), (28, 10076), (30, 10094), (31, 10100), (36, 10133), (43, 10298), (45, 10340), (48, 10430), (49, 10439), (51, 10496), (52, 10502), (53, 10547), (55, 10652),

Gene: ELee24_12 Start: 9670, Stop: 10629, Start Num: 1

Candidate Starts for ELee24_12:

(Start: 1 @9670 has 103 MA's), (4, 9757), (7, 9793), (12, 9865), (15, 9901), (25, 10030), (31, 10096), (33, 10111), (37, 10150), (38, 10156), (42, 10249), (43, 10261), (44, 10270), (45, 10303), (47, 10369), (48, 10393), (49, 10402), (52, 10465), (53, 10510),

Gene: EdElric_13 Start: 9642, Stop: 10601, Start Num: 1

Candidate Starts for EdElric_13:

(Start: 1 @9642 has 103 MA's), (6, 9762), (7, 9765), (10, 9813), (15, 9873), (25, 10002), (33, 10083), (40, 10164), (42, 10221), (43, 10233), (44, 10242), (45, 10275), (46, 10317), (48, 10365), (49, 10374), (52, 10437),

Gene: Eightball_13 Start: 9648, Stop: 10673, Start Num: 1

Candidate Starts for Eightball_13:

(Start: 1 @9648 has 103 MA's), (5, 9756), (7, 9780), (8, 9804), (9, 9810), (13, 9870), (14, 9891), (15, 9900), (16, 9906), (17, 9924), (27, 10074), (29, 10086), (30, 10101), (31, 10107), (34, 10125), (35, 10137), (36, 10140), (44, 10314), (45, 10347), (48, 10437), (51, 10503), (52, 10509), (53, 10554),

Gene: Erin_13 Start: 9642, Stop: 10601, Start Num: 1

Candidate Starts for Erin_13:

(Start: 1 @9642 has 103 MA's), (6, 9762), (7, 9765), (10, 9813), (15, 9873), (25, 10002), (33, 10083), (40, 10164), (42, 10221), (43, 10233), (44, 10242), (45, 10275), (46, 10317), (48, 10365), (49, 10374), (52, 10437),

Gene: Gabbspett_13 Start: 9743, Stop: 10705, Start Num: 1

Candidate Starts for Gabbspett_13:

(Start: 1 @9743 has 103 MA's), (6, 9863), (7, 9866), (14, 9968), (15, 9977), (25, 10106), (31, 10172), (40, 10268), (42, 10325), (43, 10337), (44, 10346), (45, 10379), (46, 10421), (48, 10469), (51, 10535), (52, 10541), (53, 10586),

Gene: Gardevoir_13 Start: 9676, Stop: 10635, Start Num: 1

Candidate Starts for Gardevoir_13:

(Start: 1 @9676 has 103 MA's), (6, 9796), (7, 9799), (10, 9847), (15, 9907), (25, 10036), (33, 10117), (40, 10198), (42, 10255), (43, 10267), (44, 10276), (45, 10309), (46, 10351), (48, 10399), (49, 10408), (52, 10471),

Gene: Gillker_13 Start: 9641, Stop: 10600, Start Num: 1

Candidate Starts for Gillker_13:

(Start: 1 @9641 has 103 MA's), (6, 9761), (7, 9764), (10, 9812), (15, 9872), (25, 10001), (33, 10082), (40, 10163), (42, 10220), (43, 10232), (44, 10241), (45, 10274), (46, 10316), (48, 10364), (49, 10373),

(52, 10436), (53, 10481),

Gene: Godfather_13 Start: 9654, Stop: 10679, Start Num: 1

Candidate Starts for Godfather_13:

(Start: 1 @9654 has 103 MA's), (5, 9762), (7, 9786), (8, 9810), (9, 9816), (13, 9876), (14, 9897), (15, 9906), (16, 9912), (17, 9930), (24, 10020), (27, 10080), (29, 10092), (30, 10107), (31, 10113), (35, 10143), (36, 10146), (44, 10320), (45, 10353), (48, 10443), (51, 10509), (52, 10515), (53, 10560),

Gene: GoldenBlanche_14 Start: 9642, Stop: 10601, Start Num: 1

Candidate Starts for GoldenBlanche_14:

(Start: 1 @9642 has 103 MA's), (6, 9762), (7, 9765), (10, 9813), (15, 9873), (25, 10002), (33, 10083), (40, 10164), (42, 10221), (43, 10233), (44, 10242), (45, 10275), (46, 10317), (48, 10365), (49, 10374), (52, 10437),

Gene: Goobery_13 Start: 9648, Stop: 10673, Start Num: 1

Candidate Starts for Goobery_13:

(Start: 1 @9648 has 103 MA's), (5, 9756), (7, 9780), (8, 9804), (9, 9810), (13, 9870), (14, 9891), (15, 9900), (16, 9906), (17, 9924), (27, 10074), (29, 10086), (30, 10101), (31, 10107), (34, 10125), (35, 10137), (36, 10140), (44, 10314), (45, 10347), (48, 10437), (51, 10503), (52, 10509), (53, 10554),

Gene: Hernandez44_13 Start: 9743, Stop: 10705, Start Num: 1

Candidate Starts for Hernandez44_13:

(Start: 1 @9743 has 103 MA's), (6, 9863), (7, 9866), (14, 9968), (15, 9977), (25, 10106), (31, 10172), (40, 10268), (42, 10325), (43, 10337), (44, 10346), (45, 10379), (46, 10421), (48, 10469), (51, 10535), (52, 10541), (53, 10586),

Gene: Horacetta_13 Start: 9642, Stop: 10601, Start Num: 1

Candidate Starts for Horacetta_13:

(Start: 1 @9642 has 103 MA's), (6, 9762), (7, 9765), (10, 9813), (15, 9873), (25, 10002), (33, 10083), (40, 10164), (42, 10221), (43, 10233), (44, 10242), (45, 10275), (46, 10317), (48, 10365), (49, 10374), (52, 10437),

Gene: Hulk_13 Start: 9655, Stop: 10617, Start Num: 1

Candidate Starts for Hulk_13:

(Start: 1 @9655 has 103 MA's), (6, 9775), (7, 9778), (11, 9847), (14, 9880), (15, 9889), (25, 10018), (31, 10084), (40, 10180), (42, 10237), (43, 10249), (44, 10258), (45, 10291), (46, 10333), (48, 10381), (51, 10447), (52, 10453), (53, 10498),

Gene: JRok_13 Start: 9633, Stop: 10592, Start Num: 1

Candidate Starts for JRok_13:

(Start: 1 @9633 has 103 MA's), (6, 9753), (7, 9756), (10, 9804), (15, 9864), (25, 9993), (33, 10074), (40, 10155), (42, 10212), (44, 10233), (45, 10266), (48, 10356), (49, 10365), (50, 10413), (52, 10428), (53, 10473), (55, 10578),

Gene: Jahseh_13 Start: 9642, Stop: 10601, Start Num: 1

Candidate Starts for Jahseh_13:

(Start: 1 @9642 has 103 MA's), (6, 9762), (7, 9765), (10, 9813), (15, 9873), (25, 10002), (33, 10083), (40, 10164), (42, 10221), (43, 10233), (44, 10242), (45, 10275), (46, 10317), (48, 10365), (49, 10374), (52, 10437), (53, 10482),

Gene: JaimeB_13 Start: 9648, Stop: 10673, Start Num: 1

Candidate Starts for JaimeB_13:

(Start: 1 @9648 has 103 MA's), (5, 9756), (7, 9780), (8, 9804), (9, 9810), (13, 9870), (14, 9891), (15, 9900), (16, 9906), (17, 9924), (27, 10074), (29, 10086), (30, 10101), (31, 10107), (34, 10125), (35, 10137), (36, 10140), (44, 10314), (45, 10347), (48, 10437), (51, 10503), (52, 10509), (53, 10554),

Gene: Jannah_13 Start: 9642, Stop: 10667, Start Num: 1

Candidate Starts for Jannah_13:

(Start: 1 @9642 has 103 MA's), (5, 9750), (7, 9774), (8, 9798), (9, 9804), (13, 9864), (14, 9885), (15, 9894), (16, 9900), (17, 9918), (24, 10008), (27, 10068), (29, 10080), (30, 10095), (31, 10101), (35, 10131), (36, 10134), (44, 10308), (45, 10341), (48, 10431), (51, 10497), (52, 10503), (53, 10548),

Gene: Jerky_13 Start: 9729, Stop: 10754, Start Num: 1

Candidate Starts for Jerky_13:

(Start: 1 @9729 has 103 MA's), (5, 9837), (7, 9861), (8, 9885), (9, 9891), (14, 9972), (15, 9981), (16, 9987), (17, 10005), (19, 10047), (21, 10059), (27, 10155), (29, 10167), (30, 10182), (31, 10188), (35, 10218), (36, 10221), (44, 10395), (45, 10428), (48, 10518), (51, 10584), (52, 10590), (53, 10635),

Gene: JoBros_13 Start: 9643, Stop: 10602, Start Num: 1

Candidate Starts for JoBros_13:

(Start: 1 @9643 has 103 MA's), (6, 9763), (7, 9766), (10, 9814), (15, 9874), (25, 10003), (33, 10084), (40, 10165), (42, 10222), (43, 10234), (44, 10243), (45, 10276), (46, 10318), (48, 10366), (49, 10375), (52, 10438),

Gene: JooneeDee_13 Start: 9674, Stop: 10699, Start Num: 1

Candidate Starts for JooneeDee_13:

(Start: 1 @9674 has 103 MA's), (3, 9737), (5, 9782), (8, 9830), (9, 9836), (15, 9926), (23, 10037), (24, 10040), (27, 10100), (29, 10112), (30, 10127), (31, 10133), (35, 10163), (36, 10166), (41, 10280), (44, 10340), (45, 10373), (48, 10463), (51, 10529), (52, 10535), (53, 10580),

Gene: Josuke_13 Start: 9654, Stop: 10679, Start Num: 1

Candidate Starts for Josuke_13:

(Start: 1 @9654 has 103 MA's), (5, 9762), (7, 9786), (8, 9810), (9, 9816), (13, 9876), (14, 9897), (15, 9906), (16, 9912), (17, 9930), (24, 10020), (27, 10080), (29, 10092), (30, 10107), (31, 10113), (35, 10143), (36, 10146), (44, 10320), (45, 10353), (48, 10443), (51, 10509), (52, 10515), (53, 10560),

Gene: Kaijohn_13 Start: 9647, Stop: 10609, Start Num: 1

Candidate Starts for Kaijohn_13:

(Start: 1 @9647 has 103 MA's), (4, 9734), (6, 9767), (7, 9770), (15, 9881), (18, 9905), (24, 9989), (25, 10010), (31, 10076), (40, 10172), (42, 10229), (43, 10241), (44, 10250), (45, 10283), (48, 10373), (49, 10382), (51, 10439), (52, 10445), (53, 10490), (55, 10595),

Gene: KayPaulus_13 Start: 9635, Stop: 10666, Start Num: 1

Candidate Starts for KayPaulus_13:

(Start: 1 @9635 has 103 MA's), (2, 9683), (5, 9743), (7, 9767), (8, 9791), (9, 9797), (16, 9893), (17, 9911), (23, 9998), (26, 10049), (27, 10067), (28, 10076), (30, 10094), (31, 10100), (36, 10133), (43, 10298), (45, 10340), (48, 10430), (49, 10439), (51, 10496), (52, 10502), (53, 10547), (55, 10652),

Gene: Kevanna_13 Start: 9635, Stop: 10666, Start Num: 1

Candidate Starts for Kevanna_13:

(Start: 1 @9635 has 103 MA's), (2, 9683), (5, 9743), (7, 9767), (8, 9791), (9, 9797), (16, 9893), (17, 9911), (23, 9998), (26, 10049), (27, 10067), (28, 10076), (30, 10094), (31, 10100), (36, 10133), (43, 10298), (45, 10340), (48, 10430), (49, 10439), (51, 10496), (52, 10502), (53, 10547), (55, 10652),

Gene: KillerTomato_13 Start: 9688, Stop: 10647, Start Num: 1

Candidate Starts for KillerTomato_13:

(Start: 1 @9688 has 103 MA's), (6, 9808), (7, 9811), (10, 9859), (15, 9919), (22, 9994), (25, 10048), (33, 10129), (40, 10210), (42, 10267), (43, 10279), (44, 10288), (45, 10321), (48, 10411), (49, 10420), (50, 10468), (52, 10483), (53, 10528), (55, 10633),

Gene: Kojax4_13 Start: 9654, Stop: 10679, Start Num: 1

Candidate Starts for Kojax4_13:

(Start: 1 @9654 has 103 MA's), (5, 9762), (7, 9786), (8, 9810), (9, 9816), (13, 9876), (14, 9897), (15, 9906), (16, 9912), (17, 9930), (24, 10020), (27, 10080), (29, 10092), (30, 10107), (31, 10113), (35, 10143), (36, 10146), (44, 10320), (45, 10353), (48, 10443), (51, 10509), (52, 10515), (53, 10560),

Gene: KyriosFaba_13 Start: 9642, Stop: 10601, Start Num: 1

Candidate Starts for KyriosFaba_13:

(Start: 1 @9642 has 103 MA's), (6, 9762), (7, 9765), (10, 9813), (15, 9873), (25, 10002), (33, 10083), (40, 10164), (42, 10221), (43, 10233), (44, 10242), (45, 10275), (46, 10317), (48, 10365), (49, 10374), (52, 10437),

Gene: LaviMo_13 Start: 9654, Stop: 10679, Start Num: 1

Candidate Starts for LaviMo_13:

(Start: 1 @9654 has 103 MA's), (5, 9762), (7, 9786), (8, 9810), (9, 9816), (13, 9876), (14, 9897), (15, 9906), (16, 9912), (17, 9930), (24, 10020), (27, 10080), (29, 10092), (30, 10107), (31, 10113), (35, 10143), (36, 10146), (44, 10320), (45, 10353), (48, 10443), (51, 10509), (52, 10515), (53, 10560),

Gene: Leafy_13 Start: 9658, Stop: 10617, Start Num: 1

Candidate Starts for Leafy_13:

(Start: 1 @9658 has 103 MA's), (6, 9778), (7, 9781), (10, 9829), (15, 9889), (25, 10018), (33, 10099), (40, 10180), (42, 10237), (43, 10249), (44, 10258), (45, 10291), (48, 10381), (49, 10390), (50, 10438), (52, 10453), (53, 10498), (55, 10603),

Gene: LemonPepper_13 Start: 9642, Stop: 10601, Start Num: 1

Candidate Starts for LemonPepper_13:

(Start: 1 @9642 has 103 MA's), (6, 9762), (7, 9765), (10, 9813), (15, 9873), (25, 10002), (33, 10083), (40, 10164), (42, 10221), (43, 10233), (44, 10242), (45, 10275), (46, 10317), (48, 10365), (49, 10374), (52, 10437), (53, 10482),

Gene: LionelHutz_13 Start: 9648, Stop: 10673, Start Num: 1

Candidate Starts for LionelHutz_13:

(Start: 1 @9648 has 103 MA's), (5, 9756), (7, 9780), (8, 9804), (9, 9810), (13, 9870), (14, 9891), (15, 9900), (16, 9906), (17, 9924), (27, 10074), (29, 10086), (30, 10101), (31, 10107), (34, 10125), (35, 10137), (36, 10140), (44, 10314), (45, 10347), (48, 10437), (51, 10503), (52, 10509), (53, 10554),

Gene: Livingwater_13 Start: 9635, Stop: 10666, Start Num: 1

Candidate Starts for Livingwater_13:

(Start: 1 @9635 has 103 MA's), (2, 9683), (7, 9767), (8, 9791), (9, 9797), (16, 9893), (17, 9911), (23, 9998), (26, 10049), (27, 10067), (28, 10076), (30, 10094), (31, 10100), (36, 10133), (43, 10298), (45, 10340), (48, 10430), (49, 10439), (51, 10496), (52, 10502), (53, 10547), (55, 10652),

Gene: Loca_13 Start: 9661, Stop: 10692, Start Num: 1

Candidate Starts for Loca_13:

(Start: 1 @9661 has 103 MA's), (2, 9709), (7, 9793), (8, 9817), (9, 9823), (16, 9919), (17, 9937), (23, 10024), (26, 10075), (27, 10093), (30, 10120), (31, 10126), (35, 10156), (36, 10159), (43, 10324), (45, 10366), (48, 10456), (49, 10465), (51, 10522), (52, 10528), (53, 10573), (54, 10657), (55, 10678),

Gene: Lola20_13 Start: 9643, Stop: 10602, Start Num: 1

Candidate Starts for Lola20_13:

(Start: 1 @9643 has 103 MA's), (6, 9763), (7, 9766), (10, 9814), (11, 9832), (14, 9865), (15, 9874), (25, 10003), (31, 10069), (33, 10084), (42, 10222), (43, 10234), (44, 10243), (45, 10276), (46, 10318), (48, 10366), (49, 10375), (50, 10423), (52, 10438), (53, 10483), (55, 10588),

Gene: Luxx_13 Start: 9666, Stop: 10691, Start Num: 1

Candidate Starts for Luxx_13:

(Start: 1 @9666 has 103 MA's), (5, 9774), (7, 9798), (8, 9822), (9, 9828), (13, 9888), (14, 9909), (15, 9918), (16, 9924), (17, 9942), (24, 10032), (27, 10092), (29, 10104), (30, 10119), (31, 10125), (35, 10155), (36, 10158), (44, 10332), (45, 10365), (48, 10455), (51, 10521), (52, 10527), (53, 10572),

Gene: Madebyisha_16 Start: 9729, Stop: 10754, Start Num: 1

Candidate Starts for Madebyisha_16:

(Start: 1 @9729 has 103 MA's), (5, 9837), (7, 9861), (8, 9885), (9, 9891), (14, 9972), (15, 9981), (16, 9987), (17, 10005), (19, 10047), (21, 10059), (27, 10155), (29, 10167), (30, 10182), (31, 10188), (35, 10218), (36, 10221), (44, 10395), (45, 10428), (48, 10518), (51, 10584), (52, 10590), (53, 10635),

Gene: Majesty_13 Start: 9648, Stop: 10673, Start Num: 1

Candidate Starts for Majesty_13:

(Start: 1 @9648 has 103 MA's), (5, 9756), (7, 9780), (8, 9804), (9, 9810), (13, 9870), (14, 9891), (15, 9900), (16, 9906), (17, 9924), (27, 10074), (29, 10086), (30, 10101), (31, 10107), (34, 10125), (35, 10137), (36, 10140), (44, 10314), (45, 10347), (48, 10437), (51, 10503), (52, 10509), (53, 10554),

Gene: ManAs_13 Start: 9642, Stop: 10601, Start Num: 1

Candidate Starts for ManAs_13:

(Start: 1 @9642 has 103 MA's), (6, 9762), (7, 9765), (10, 9813), (15, 9873), (25, 10002), (33, 10083), (40, 10164), (42, 10221), (43, 10233), (44, 10242), (45, 10275), (46, 10317), (48, 10365), (49, 10374), (52, 10437),

Gene: Maneater_13 Start: 9630, Stop: 10655, Start Num: 1

Candidate Starts for Maneater_13:

(Start: 1 @9630 has 103 MA's), (5, 9738), (7, 9762), (8, 9786), (9, 9792), (13, 9852), (14, 9873), (15, 9882), (16, 9888), (17, 9906), (24, 9996), (27, 10056), (29, 10068), (30, 10083), (31, 10089), (35, 10119), (36, 10122), (44, 10296), (45, 10329), (48, 10419), (51, 10485), (52, 10491), (53, 10536),

Gene: MasterPitts_13 Start: 9648, Stop: 10610, Start Num: 1

Candidate Starts for MasterPitts_13:

(Start: 1 @9648 has 103 MA's), (6, 9768), (7, 9771), (14, 9873), (15, 9882), (22, 9957), (25, 10011), (31, 10077), (40, 10173), (42, 10230), (43, 10242), (44, 10251), (45, 10284), (46, 10326), (48, 10374), (52, 10446), (53, 10491),

Gene: McShie_13 Start: 9631, Stop: 10662, Start Num: 1

Candidate Starts for McShie_13:

(Start: 1 @9631 has 103 MA's), (2, 9679), (5, 9739), (7, 9763), (8, 9787), (9, 9793), (16, 9889), (17, 9907), (23, 9994), (26, 10045), (27, 10063), (30, 10090), (31, 10096), (36, 10129), (43, 10294), (45, 10336), (48, 10426), (49, 10435), (51, 10492), (52, 10498), (53, 10543), (55, 10648),

Gene: MelBee03_13 Start: 9635, Stop: 10666, Start Num: 1

Candidate Starts for MelBee03_13:

(Start: 1 @9635 has 103 MA's), (2, 9683), (5, 9743), (7, 9767), (8, 9791), (9, 9797), (16, 9893), (17, 9911), (23, 9998), (26, 10049), (27, 10067), (28, 10076), (30, 10094), (31, 10100), (36, 10133), (43, 10298), (45, 10340), (48, 10430), (49, 10439), (51, 10496), (52, 10502), (53, 10547), (55, 10652),

Gene: Minima_13 Start: 9642, Stop: 10601, Start Num: 1

Candidate Starts for Minima_13:

(Start: 1 @9642 has 103 MA's), (6, 9762), (7, 9765), (10, 9813), (15, 9873), (25, 10002), (33, 10083), (40, 10164), (42, 10221), (43, 10233), (44, 10242), (45, 10275), (46, 10317), (48, 10365), (49, 10374), (52, 10437),

Gene: MirimarMandM_13 Start: 9717, Stop: 10742, Start Num: 1

Candidate Starts for MirimarMandM_13:

(Start: 1 @9717 has 103 MA's), (3, 9780), (5, 9825), (8, 9873), (9, 9879), (15, 9969), (23, 10080), (24, 10083), (27, 10143), (29, 10155), (30, 10170), (31, 10176), (35, 10206), (36, 10209), (39, 10260), (41, 10323), (44, 10383), (45, 10416), (48, 10506), (51, 10572), (52, 10578), (53, 10623),

Gene: MrGreen_13 Start: 9655, Stop: 10614, Start Num: 1

Candidate Starts for MrGreen_13:

(Start: 1 @9655 has 103 MA's), (6, 9775), (7, 9778), (10, 9826), (15, 9886), (25, 10015), (33, 10096), (40, 10177), (42, 10234), (43, 10246), (44, 10255), (45, 10288), (48, 10378), (49, 10387), (50, 10435), (52, 10450), (53, 10495), (55, 10600),

Gene: Myram_14 Start: 9642, Stop: 10601, Start Num: 1

Candidate Starts for Myram_14:

(Start: 1 @9642 has 103 MA's), (6, 9762), (7, 9765), (10, 9813), (15, 9873), (25, 10002), (33, 10083), (40, 10164), (42, 10221), (43, 10233), (44, 10242), (45, 10275), (46, 10317), (48, 10365), (49, 10374), (52, 10437), (53, 10482),

Gene: NeumannU_13 Start: 9648, Stop: 10673, Start Num: 1

Candidate Starts for NeumannU_13:

(Start: 1 @9648 has 103 MA's), (5, 9756), (7, 9780), (8, 9804), (9, 9810), (13, 9870), (14, 9891), (15, 9900), (16, 9906), (17, 9924), (27, 10074), (29, 10086), (30, 10101), (31, 10107), (34, 10125), (35, 10137), (36, 10140), (44, 10314), (45, 10347), (48, 10437), (51, 10503), (52, 10509), (53, 10554),

Gene: Noelani_13 Start: 9616, Stop: 10575, Start Num: 1

Candidate Starts for Noelani_13:

(Start: 1 @9616 has 103 MA's), (6, 9736), (15, 9847), (25, 9976), (27, 10009), (31, 10042), (33, 10057), (40, 10138), (42, 10195), (43, 10207), (44, 10216), (45, 10249), (48, 10339), (51, 10405), (52, 10411), (53, 10456), (55, 10561),

Gene: Oaklynn_13 Start: 9636, Stop: 10595, Start Num: 1

Candidate Starts for Oaklynn_13:

(Start: 1 @9636 has 103 MA's), (6, 9756), (7, 9759), (10, 9807), (15, 9867), (25, 9996), (33, 10077), (40, 10158), (42, 10215), (43, 10227), (44, 10236), (45, 10269), (48, 10359), (49, 10368), (50, 10416), (52, 10431), (53, 10476), (55, 10581),

Gene: Octopus_13 Start: 9642, Stop: 10601, Start Num: 1

Candidate Starts for Octopus_13:

(Start: 1 @9642 has 103 MA's), (6, 9762), (7, 9765), (10, 9813), (15, 9873), (25, 10002), (33, 10083), (40, 10164), (42, 10221), (43, 10233), (44, 10242), (45, 10275), (46, 10317), (48, 10365), (49, 10374), (52, 10437),

Gene: Otwor_13 Start: 9654, Stop: 10679, Start Num: 1

Candidate Starts for Otwor_13:

(Start: 1 @9654 has 103 MA's), (5, 9762), (7, 9786), (8, 9810), (9, 9816), (13, 9876), (14, 9897), (15, 9906), (16, 9912), (17, 9930), (24, 10020), (27, 10080), (29, 10092), (30, 10107), (31, 10113), (35,

10143), (36, 10146), (44, 10320), (45, 10353), (48, 10443), (51, 10509), (52, 10515), (53, 10560),

Gene: Owens_13 Start: 9648, Stop: 10673, Start Num: 1

Candidate Starts for Owens_13:

(Start: 1 @9648 has 103 MA's), (5, 9756), (7, 9780), (8, 9804), (9, 9810), (13, 9870), (14, 9891), (15, 9900), (16, 9906), (17, 9924), (27, 10074), (29, 10086), (30, 10101), (31, 10107), (34, 10125), (35, 10137), (36, 10140), (44, 10314), (45, 10347), (48, 10437), (51, 10503), (52, 10509), (53, 10554),

Gene: PaoPu_13 Start: 9642, Stop: 10601, Start Num: 1

Candidate Starts for PaoPu_13:

(Start: 1 @9642 has 103 MA's), (6, 9762), (7, 9765), (10, 9813), (15, 9873), (25, 10002), (33, 10083), (40, 10164), (42, 10221), (43, 10233), (44, 10242), (45, 10275), (46, 10317), (48, 10365), (49, 10374), (52, 10437),

Gene: Picnic_13 Start: 9642, Stop: 10601, Start Num: 1

Candidate Starts for Picnic_13:

(Start: 1 @9642 has 103 MA's), (6, 9762), (7, 9765), (10, 9813), (15, 9873), (25, 10002), (33, 10083), (40, 10164), (42, 10221), (43, 10233), (44, 10242), (45, 10275), (46, 10317), (48, 10365), (49, 10374), (52, 10437),

Gene: PoRanda_13 Start: 9717, Stop: 10742, Start Num: 1

Candidate Starts for PoRanda_13:

(Start: 1 @9717 has 103 MA's), (3, 9780), (5, 9825), (8, 9873), (9, 9879), (15, 9969), (23, 10080), (24, 10083), (27, 10143), (29, 10155), (30, 10170), (31, 10176), (35, 10206), (36, 10209), (39, 10260), (41, 10323), (44, 10383), (45, 10416), (48, 10506), (51, 10572), (52, 10578), (53, 10623),

Gene: Pondwater_13 Start: 9642, Stop: 10601, Start Num: 1

Candidate Starts for Pondwater_13:

(Start: 1 @9642 has 103 MA's), (6, 9762), (7, 9765), (10, 9813), (15, 9873), (25, 10002), (33, 10083), (40, 10164), (42, 10221), (43, 10233), (44, 10242), (45, 10275), (46, 10317), (48, 10365), (49, 10374), (52, 10437),

Gene: Puddles3_14 Start: 9642, Stop: 10601, Start Num: 1

Candidate Starts for Puddles3_14:

(Start: 1 @9642 has 103 MA's), (6, 9762), (7, 9765), (10, 9813), (15, 9873), (25, 10002), (33, 10083), (40, 10164), (42, 10221), (43, 10233), (44, 10242), (45, 10275), (46, 10317), (48, 10365), (49, 10374), (52, 10437),

Gene: Quaker_13 Start: 9635, Stop: 10666, Start Num: 1

Candidate Starts for Quaker_13:

(Start: 1 @9635 has 103 MA's), (2, 9683), (7, 9767), (8, 9791), (9, 9797), (16, 9893), (17, 9911), (23, 9998), (26, 10049), (27, 10067), (28, 10076), (30, 10094), (31, 10100), (36, 10133), (43, 10298), (45, 10340), (48, 10430), (49, 10439), (51, 10496), (52, 10502), (53, 10547), (55, 10652),

Gene: Rhogar_13 Start: 9648, Stop: 10673, Start Num: 1

Candidate Starts for Rhogar_13:

(Start: 1 @9648 has 103 MA's), (5, 9756), (7, 9780), (8, 9804), (9, 9810), (13, 9870), (14, 9891), (15, 9900), (16, 9906), (17, 9924), (27, 10074), (29, 10086), (30, 10101), (31, 10107), (34, 10125), (35, 10137), (36, 10140), (44, 10314), (45, 10347), (48, 10437), (51, 10503), (52, 10509), (53, 10554),

Gene: Rhysand_13 Start: 9654, Stop: 10679, Start Num: 1

Candidate Starts for Rhysand_13:

(Start: 1 @9654 has 103 MA's), (5, 9762), (7, 9786), (8, 9810), (9, 9816), (13, 9876), (14, 9897), (15, 9906), (16, 9912), (17, 9930), (24, 10020), (27, 10080), (29, 10092), (30, 10107), (31, 10113), (35, 10143), (36, 10146), (44, 10320), (45, 10353), (48, 10443), (51, 10509), (52, 10515), (53, 10560),

Gene: RoscoWindex_14 Start: 9655, Stop: 10680, Start Num: 1

Candidate Starts for RoscoWindex_14:

(Start: 1 @9655 has 103 MA's), (5, 9763), (7, 9787), (8, 9811), (9, 9817), (13, 9877), (14, 9898), (15, 9907), (16, 9913), (17, 9931), (24, 10021), (27, 10081), (29, 10093), (30, 10108), (31, 10114), (35, 10144), (36, 10147), (44, 10321), (45, 10354), (48, 10444), (51, 10510), (52, 10516), (53, 10561),

Gene: Sage7_13 Start: 9654, Stop: 10679, Start Num: 1

Candidate Starts for Sage7_13:

(Start: 1 @9654 has 103 MA's), (5, 9762), (7, 9786), (8, 9810), (9, 9816), (13, 9876), (14, 9897), (15, 9906), (16, 9912), (17, 9930), (24, 10020), (27, 10080), (29, 10092), (30, 10107), (31, 10113), (35, 10143), (36, 10146), (44, 10320), (45, 10353), (48, 10443), (51, 10509), (52, 10515), (53, 10560),

Gene: SantasSleigh_13 Start: 9678, Stop: 10703, Start Num: 1

Candidate Starts for SantasSleigh_13:

(Start: 1 @9678 has 103 MA's), (5, 9786), (7, 9810), (8, 9834), (9, 9840), (13, 9900), (14, 9921), (15, 9930), (16, 9936), (17, 9954), (24, 10044), (27, 10104), (29, 10116), (30, 10131), (31, 10137), (35, 10167), (36, 10170), (44, 10344), (45, 10377), (48, 10467), (51, 10533), (52, 10539), (53, 10584),

Gene: Sara_13 Start: 9642, Stop: 10601, Start Num: 1

Candidate Starts for Sara_13:

(Start: 1 @9642 has 103 MA's), (6, 9762), (7, 9765), (10, 9813), (15, 9873), (25, 10002), (33, 10083), (40, 10164), (42, 10221), (43, 10233), (44, 10242), (45, 10275), (46, 10317), (48, 10365), (49, 10374), (52, 10437),

Gene: Scamander_13 Start: 9654, Stop: 10679, Start Num: 1

Candidate Starts for Scamander_13:

(Start: 1 @9654 has 103 MA's), (5, 9762), (7, 9786), (8, 9810), (9, 9816), (13, 9876), (14, 9897), (15, 9906), (16, 9912), (17, 9930), (24, 10020), (27, 10080), (29, 10092), (30, 10107), (31, 10113), (35, 10143), (36, 10146), (44, 10320), (45, 10353), (48, 10443), (51, 10509), (52, 10515), (53, 10560),

Gene: Scrunchy_13 Start: 9648, Stop: 10673, Start Num: 1

Candidate Starts for Scrunchy_13:

(Start: 1 @9648 has 103 MA's), (5, 9756), (7, 9780), (8, 9804), (9, 9810), (13, 9870), (14, 9891), (15, 9900), (16, 9906), (17, 9924), (27, 10074), (29, 10086), (30, 10101), (31, 10107), (34, 10125), (35, 10137), (36, 10140), (44, 10314), (45, 10347), (48, 10437), (51, 10503), (52, 10509), (53, 10554),

Gene: SeaWolves_13 Start: 9642, Stop: 10601, Start Num: 1

Candidate Starts for SeaWolves_13:

(Start: 1 @9642 has 103 MA's), (6, 9762), (7, 9765), (10, 9813), (15, 9873), (25, 10002), (33, 10083), (40, 10164), (42, 10221), (43, 10233), (44, 10242), (45, 10275), (46, 10317), (48, 10365), (49, 10374), (52, 10437), (53, 10482),

Gene: Sippinontea_13 Start: 9635, Stop: 10666, Start Num: 1

Candidate Starts for Sippinontea_13:

(Start: 1 @9635 has 103 MA's), (2, 9683), (5, 9743), (7, 9767), (8, 9791), (9, 9797), (16, 9893), (17, 9911), (23, 9998), (26, 10049), (27, 10067), (28, 10076), (30, 10094), (31, 10100), (36, 10133), (43, 10298), (45, 10340), (48, 10430), (49, 10439), (51, 10496), (52, 10502), (53, 10547), (55, 10652),

Gene: Slentz_13 Start: 9648, Stop: 10673, Start Num: 1

Candidate Starts for Slentz_13:

(Start: 1 @9648 has 103 MA's), (5, 9756), (7, 9780), (8, 9804), (9, 9810), (13, 9870), (14, 9891), (15, 9900), (16, 9906), (17, 9924), (27, 10074), (29, 10086), (30, 10101), (31, 10107), (34, 10125), (35, 10137), (36, 10140), (44, 10314), (45, 10347), (48, 10437), (51, 10503), (52, 10509), (53, 10554),

Gene: TeddyBoy_13 Start: 9649, Stop: 10674, Start Num: 1

Candidate Starts for TeddyBoy_13:

(Start: 1 @9649 has 103 MA's), (5, 9757), (7, 9781), (8, 9805), (9, 9811), (13, 9871), (14, 9892), (15, 9901), (16, 9907), (17, 9925), (27, 10075), (29, 10087), (30, 10102), (31, 10108), (34, 10126), (35, 10138), (36, 10141), (44, 10315), (45, 10348), (48, 10438), (51, 10504), (52, 10510), (53, 10555),

Gene: TimoTea_13 Start: 9630, Stop: 10655, Start Num: 1

Candidate Starts for TimoTea_13:

(Start: 1 @9630 has 103 MA's), (5, 9738), (7, 9762), (8, 9786), (9, 9792), (13, 9852), (14, 9873), (15, 9882), (16, 9888), (17, 9906), (24, 9996), (27, 10056), (29, 10068), (30, 10083), (31, 10089), (35, 10119), (36, 10122), (44, 10296), (45, 10329), (48, 10419), (51, 10485), (52, 10491), (53, 10536),

Gene: Upsilon_13 Start: 9717, Stop: 10742, Start Num: 1

Candidate Starts for Upsilon_13:

(Start: 1 @9717 has 103 MA's), (3, 9780), (5, 9825), (8, 9873), (9, 9879), (15, 9969), (23, 10080), (24, 10083), (27, 10143), (29, 10155), (30, 10170), (31, 10176), (35, 10206), (36, 10209), (41, 10323), (44, 10383), (45, 10416), (48, 10506), (51, 10572), (52, 10578), (53, 10623),

Gene: Vanisius_13 Start: 9654, Stop: 10679, Start Num: 1

Candidate Starts for Vanisius_13:

(Start: 1 @9654 has 103 MA's), (5, 9762), (7, 9786), (8, 9810), (9, 9816), (13, 9876), (14, 9897), (15, 9906), (16, 9912), (17, 9930), (24, 10020), (27, 10080), (29, 10092), (30, 10107), (31, 10113), (35, 10143), (36, 10146), (44, 10320), (45, 10353), (48, 10443), (51, 10509), (52, 10515), (53, 10560),

Gene: VitulaEligans_13 Start: 9738, Stop: 10763, Start Num: 1

Candidate Starts for VitulaEligans_13:

(Start: 1 @9738 has 103 MA's), (5, 9846), (7, 9870), (8, 9894), (9, 9900), (14, 9981), (15, 9990), (16, 9996), (17, 10014), (19, 10056), (21, 10068), (27, 10164), (29, 10176), (30, 10191), (31, 10197), (35, 10227), (36, 10230), (44, 10404), (45, 10437), (48, 10527), (51, 10593), (52, 10599), (53, 10644),

Gene: Witch_13 Start: 9643, Stop: 10602, Start Num: 1

Candidate Starts for Witch_13:

(Start: 1 @9643 has 103 MA's), (6, 9763), (7, 9766), (10, 9814), (15, 9874), (25, 10003), (33, 10084), (40, 10165), (42, 10222), (43, 10234), (44, 10243), (45, 10276), (46, 10318), (48, 10366), (49, 10375), (52, 10438),

Gene: Wolfpack_13 Start: 9635, Stop: 10666, Start Num: 1

Candidate Starts for Wolfpack_13:

(Start: 1 @9635 has 103 MA's), (2, 9683), (5, 9743), (7, 9767), (8, 9791), (9, 9797), (16, 9893), (17, 9911), (23, 9998), (26, 10049), (27, 10067), (28, 10076), (30, 10094), (31, 10100), (36, 10133), (43, 10298), (45, 10340), (48, 10430), (49, 10439), (51, 10496), (52, 10502), (53, 10547), (55, 10652),

Gene: Yasuo_13 Start: 9639, Stop: 10664, Start Num: 1

Candidate Starts for Yasuo_13:

(Start: 1 @9639 has 103 MA's), (5, 9747), (7, 9771), (8, 9795), (9, 9801), (14, 9882), (15, 9891), (16, 9897), (17, 9915), (24, 10005), (27, 10065), (29, 10077), (30, 10092), (31, 10098), (35, 10128), (36, 10131), (44, 10305), (45, 10338), (48, 10428), (51, 10494), (52, 10500), (53, 10545),

Gene: YertPhresh_13 Start: 9642, Stop: 10601, Start Num: 1

Candidate Starts for YertPhresh_13:

(Start: 1 @9642 has 103 MA's), (6, 9762), (7, 9765), (10, 9813), (15, 9873), (25, 10002), (33, 10083), (40, 10164), (42, 10221), (43, 10233), (44, 10242), (45, 10275), (46, 10317), (48, 10365), (49, 10374), (52, 10437), (53, 10482),

Gene: Yubaba_13 Start: 9676, Stop: 10635, Start Num: 1

Candidate Starts for Yubaba_13:

(Start: 1 @9676 has 103 MA's), (6, 9796), (7, 9799), (10, 9847), (15, 9907), (25, 10036), (33, 10117), (40, 10198), (42, 10255), (43, 10267), (44, 10276), (45, 10309), (46, 10351), (48, 10399), (49, 10408), (52, 10471),

Gene: Zahlia_14 Start: 9747, Stop: 10709, Start Num: 1

Candidate Starts for Zahlia_14:

(Start: 1 @9747 has 103 MA's), (6, 9867), (7, 9870), (14, 9972), (15, 9981), (22, 10056), (25, 10110), (31, 10176), (40, 10272), (42, 10329), (43, 10341), (44, 10350), (45, 10383), (46, 10425), (48, 10473), (52, 10545), (53, 10590),