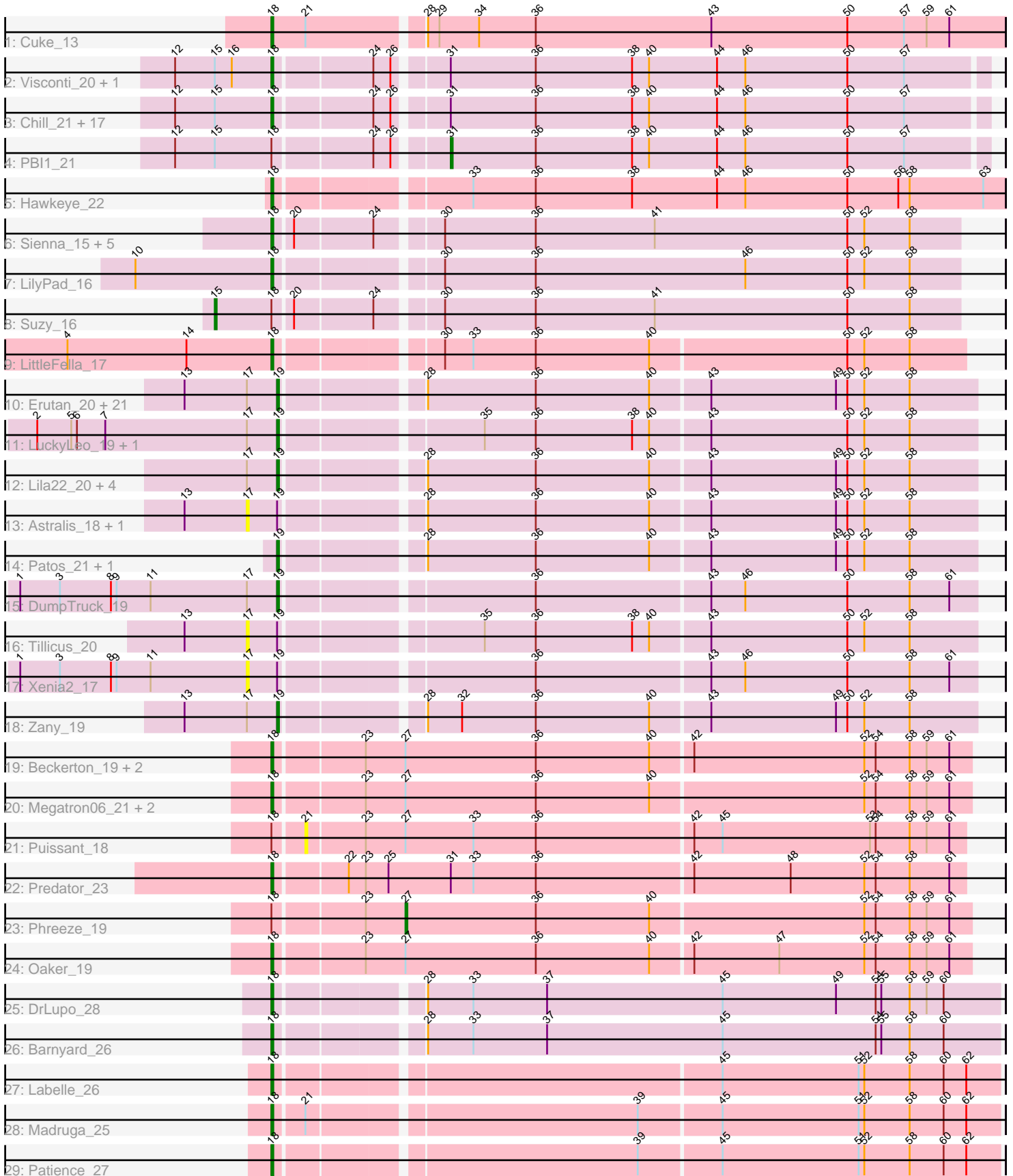


Pham 202867



Note: Tracks are now grouped by subcluster and scaled. Switching in subcluster is indicated by changes in track color. Track scale is now set by default to display the region 30 bp upstream of start 1 to 30 bp downstream of the last possible start. If this default region is judged to be packed too tightly with annotated starts, the track will be further scaled to only show that region of the ORF with annotated starts. This action will be indicated by adding "Zoomed" to the title. For starts, yellow indicates the location of called starts comprised solely of Glimmer/GeneMark auto-annotations, green indicates the location of called starts with at least 1 manual gene annotation.

Pham 202867 Report

This analysis was run 01/18/25 on database version 583.

Pham number 202867 has 84 members, 9 are drafts.

Phages represented in each track:

- Track 1 : Cuke_13
- Track 2 : Visconti_20, Thoth_20
- Track 3 : Chill_21, WaldoWhy_21, KandZ_20, BigMama_18, Nova_20, Butterscotch_20, SirHarley_19, Erk16_20, Troll4_20, Prager_20, Giuseppe_20, Adjutor_21, Gumball_19, PLOT_21, Penelope2018_20, Mopey_20, Delton_20, Helpful_21
- Track 4 : PBI1_21
- Track 5 : Hawkeye_22
- Track 6 : Sienna_15, Terapin_15, Beyoncage_15, Djokovic_15, Madi_15, BiteSize_15
- Track 7 : LilyPad_16
- Track 8 : Suzy_16
- Track 9 : LittleFella_17
- Track 10 : Erutan_20, Ranch_20, Genamy16_19, Gretellyn_20, Jamemuya19_17, Sampudon_20, Rumi_19, NovaSharks_19, RazorC_18, Mima20_19, DoobyDoo_19, Yikes_21, Gibbin_21, Lambo_20, ParvusTarda_20, Alyssamiracle_19, Alephilan_17, Wojtek_19, Jalebi_20, OtterstedtS21_20, Sadboi_20, DaviePasture_20
- Track 11 : LuckyLeo_19, Apeppi_18
- Track 12 : Lila22_20, MoiGyank_22, BirthdayBoy_21, GOATification_21, Fulcrum_21
- Track 13 : Astralis_18, Avian_18
- Track 14 : Patos_21, NorManre_21
- Track 15 : DumpTruck_19
- Track 16 : Tillicus_20
- Track 17 : Xenia2_17
- Track 18 : Zany_19
- Track 19 : Beckerton_19, Konstantine_24, Cborch11_20
- Track 20 : Megatron06_21, Thumb_19, Damien_19
- Track 21 : Puissant_18
- Track 22 : Predator_23
- Track 23 : Phreeze_19
- Track 24 : Oaker_19
- Track 25 : DrLupo_28
- Track 26 : Barnyard_26
- Track 27 : Labelle_26
- Track 28 : Madruga_25
- Track 29 : Patience_27

Summary of Final Annotations (See graph section above for start numbers):

The start number called the most often in the published annotations is 18, it was called in 43 of the 75 non-draft genes in the pham.

Genes that call this "Most Annotated" start:

- Adjutor_21, Barnyard_26, Beckerton_19, Beyoncage_15, BigMama_18, BiteSize_15, Butterscotch_20, Cborch11_20, Chill_21, Cuke_13, Damien_19, Delton_20, Djokovic_15, DrLupo_28, Erk16_20, Giuseppe_20, Gumball_19, Hawkeye_22, Helpful_21, KandZ_20, Konstantine_24, Labelle_26, LilyPad_16, LittleFella_17, Madi_15, Madrugada_25, Megatron06_21, Mopey_20, Nova_20, Oaker_19, PLOT_21, Patience_27, Penelope2018_20, Prager_20, Predator_23, Sienna_15, SirHarley_19, Terapin_15, Thoth_20, Thumb_19, Troll4_20, Visconti_20, WaldoWhy_21,

Genes that have the "Most Annotated" start but do not call it:

- PB11_21, Phreeze_19, Puissant_18, Suzy_16,

Genes that do not have the "Most Annotated" start:

- Alephlan_17, Alyssamiracle_19, Apeppi_18, Astralis_18, Avian_18, BirthdayBoy_21, DaviePasture_20, DoobyDoo_19, DumpTruck_19, Erutan_20, Fulcrum_21, GOATification_21, Genamy16_19, Gibbin_21, GretelLyn_20, Jalebi_20, Jamemuya19_17, Lambo_20, Lila22_20, LuckyLeo_19, Mima20_19, MoiGyank_22, NorManre_21, NovaSharks_19, OtterstedtS21_20, ParvusTarda_20, Patos_21, Ranch_20, RazorC_18, Rumi_19, Sadboi_20, Sampudon_20, Tillicus_20, Wojtek_19, Xenia2_17, Yikes_21, Zany_19,

Summary by start number:

Start 15:

- Found in 22 of 84 (26.2%) of genes in pham
- Manual Annotations of this start: 1 of 75
- Called 4.5% of time when present
- Phage (with cluster) where this start called: Suzy_16 (DG1),

Start 17:

- Found in 35 of 84 (41.7%) of genes in pham
- No Manual Annotations of this start.
- Called 11.4% of time when present
- Phage (with cluster) where this start called: Astralis_18 (DV), Avian_18 (DV), Tillicus_20 (DV), Xenia2_17 (DV),

Start 18:

- Found in 47 of 84 (56.0%) of genes in pham
- Manual Annotations of this start: 43 of 75
- Called 91.5% of time when present
- Phage (with cluster) where this start called: Adjutor_21 (D1), Barnyard_26 (H2), Beckerton_19 (H1), Beyoncage_15 (DG1), BigMama_18 (D1), BiteSize_15 (DG1), Butterscotch_20 (D1), Cborch11_20 (H1), Chill_21 (D1), Cuke_13 (AC), Damien_19

(H1), Delton_20 (D1), Djokovic_15 (DG1), DrLupo_28 (H2), Erk16_20 (D1), Giuseppe_20 (D1), Gumball_19 (D1), Hawkeye_22 (D2), Helpful_21 (D1), KandZ_20 (D1), Konstantine_24 (H1), Labelle_26 (U), LilyPad_16 (DG1), LittleFella_17 (DG2), Madi_15 (DG1), Madrugá_25 (U), Megatron06_21 (H1), Mopey_20 (D1), Nova_20 (D1), Oaker_19 (H1), PLOT_21 (D1), Patience_27 (U), Penelope2018_20 (D1), Prager_20 (D1), Predator_23 (H1), Sienna_15 (DG1), SirHarley_19 (D1), Terapin_15 (DG1), Thoth_20 (D1), Thumb_19 (H1), Troll4_20 (D1), Visconti_20 (D1), WaldoWhy_21 (D1),

Start 19:

- Found in 37 of 84 (44.0%) of genes in pham
- Manual Annotations of this start: 29 of 75
- Called 89.2% of time when present
- Phage (with cluster) where this start called: Alephilan_17 (DV), Alyssamiracle_19 (DV), Apeppi_18 (DV), BirthdayBoy_21 (DV), DaviePasture_20 (DV), DoobyDoo_19 (DV), DumpTruck_19 (DV), Erutan_20 (DV), Fulcrum_21 (DV), GOATification_21 (DV), Genamy16_19 (DV), Gibbin_21 (DV), GretelLyn_20 (DV), Jalebi_20 (DV), Jamemuya19_17 (DV), Lambo_20 (DV), Lila22_20 (DV), LuckyLeo_19 (DV), Mima20_19 (DV), MoiGyank_22 (DV), NorManre_21 (DV), NovaSharks_19 (DV), OtterstedtS21_20 (DV), ParvusTarda_20 (DV), Patos_21 (DV), Ranch_20 (DV), RazorC_18 (DV), Rumi_19 (DV), Sadboi_20 (DV), Sampudon_20 (DV), Wojtek_19 (DV), Yikes_21 (DV), Zany_19 (DV),

Start 21:

- Found in 3 of 84 (3.6%) of genes in pham
- No Manual Annotations of this start.
- Called 33.3% of time when present
- Phage (with cluster) where this start called: Puissant_18 (H1),

Start 27:

- Found in 9 of 84 (10.7%) of genes in pham
- Manual Annotations of this start: 1 of 75
- Called 11.1% of time when present
- Phage (with cluster) where this start called: Phreeze_19 (H1),

Start 31:

- Found in 22 of 84 (26.2%) of genes in pham
- Manual Annotations of this start: 1 of 75
- Called 4.5% of time when present
- Phage (with cluster) where this start called: PB11_21 (D1),

Summary by clusters:

There are 9 clusters represented in this pham: AC, H2, H1, DG2, DG1, U, DV, D2, D1,

Info for manual annotations of cluster AC:

- Start number 18 was manually annotated 1 time for cluster AC.

Info for manual annotations of cluster D1:

- Start number 18 was manually annotated 20 times for cluster D1.
- Start number 31 was manually annotated 1 time for cluster D1.

Info for manual annotations of cluster D2:

- Start number 18 was manually annotated 1 time for cluster D2.

Info for manual annotations of cluster DG1:

- Start number 15 was manually annotated 1 time for cluster DG1.
- Start number 18 was manually annotated 7 times for cluster DG1.

Info for manual annotations of cluster DG2:

- Start number 18 was manually annotated 1 time for cluster DG2.

Info for manual annotations of cluster DV:

- Start number 19 was manually annotated 29 times for cluster DV.

Info for manual annotations of cluster H1:

- Start number 18 was manually annotated 8 times for cluster H1.
- Start number 27 was manually annotated 1 time for cluster H1.

Info for manual annotations of cluster H2:

- Start number 18 was manually annotated 2 times for cluster H2.

Info for manual annotations of cluster U:

- Start number 18 was manually annotated 3 times for cluster U.

Gene Information:

Gene: Adjutor_21 Start: 13129, Stop: 13491, Start Num: 18

Candidate Starts for Adjutor_21:

(12, 13078), (Start: 15 @13099 has 1 MA's), (Start: 18 @13129 has 43 MA's), (24, 13177), (26, 13186), (Start: 31 @13210 has 1 MA's), (36, 13255), (38, 13306), (40, 13315), (44, 13351), (46, 13366), (50, 13420), (57, 13450),

Gene: Alephilan_17 Start: 13618, Stop: 13971, Start Num: 19

Candidate Starts for Alephilan_17:

(13, 13570), (17, 13603), (Start: 19 @13618 has 29 MA's), (28, 13684), (36, 13741), (40, 13801), (43, 13831), (49, 13897), (50, 13903), (52, 13912), (58, 13936),

Gene: Alyssamiracle_19 Start: 12025, Stop: 12378, Start Num: 19

Candidate Starts for Alyssamiracle_19:

(13, 11977), (17, 12010), (Start: 19 @12025 has 29 MA's), (28, 12091), (36, 12148), (40, 12208), (43, 12238), (49, 12304), (50, 12310), (52, 12319), (58, 12343),

Gene: Apeppi_18 Start: 13740, Stop: 14093, Start Num: 19

Candidate Starts for Apeppi_18:

(2, 13614), (5, 13632), (6, 13635), (7, 13650), (17, 13725), (Start: 19 @13740 has 29 MA's), (35, 13836), (36, 13863), (38, 13914), (40, 13923), (43, 13953), (50, 14025), (52, 14034), (58, 14058),

Gene: Astralis_18 Start: 12010, Stop: 12378, Start Num: 17

Candidate Starts for Astralis_18:

(13, 11977), (17, 12010), (Start: 19 @12025 has 29 MA's), (28, 12091), (36, 12148), (40, 12208), (43, 12238), (49, 12304), (50, 12310), (52, 12319), (58, 12343),

Gene: Avian_18 Start: 12010, Stop: 12378, Start Num: 17

Candidate Starts for Avian_18:

(13, 11977), (17, 12010), (Start: 19 @12025 has 29 MA's), (28, 12091), (36, 12148), (40, 12208), (43, 12238), (49, 12304), (50, 12310), (52, 12319), (58, 12343),

Gene: Barnyard_26 Start: 14807, Stop: 15178, Start Num: 18

Candidate Starts for Barnyard_26:

(Start: 18 @14807 has 43 MA's), (28, 14876), (33, 14900), (37, 14939), (45, 15032), (54, 15113), (55, 15116), (58, 15131), (60, 15149),

Gene: Beckerton_19 Start: 13539, Stop: 13901, Start Num: 18

Candidate Starts for Beckerton_19:

(Start: 18 @13539 has 43 MA's), (23, 13584), (Start: 27 @13605 has 1 MA's), (36, 13674), (40, 13734), (42, 13755), (52, 13845), (54, 13851), (58, 13869), (59, 13878), (61, 13890),

Gene: Beyoncage_15 Start: 9519, Stop: 9869, Start Num: 18

Candidate Starts for Beyoncage_15:

(Start: 18 @9519 has 43 MA's), (20, 9528), (24, 9567), (30, 9597), (36, 9645), (41, 9708), (50, 9810), (52, 9819), (58, 9843),

Gene: BigMama_18 Start: 13205, Stop: 13567, Start Num: 18

Candidate Starts for BigMama_18:

(12, 13154), (Start: 15 @13175 has 1 MA's), (Start: 18 @13205 has 43 MA's), (24, 13253), (26, 13262), (Start: 31 @13286 has 1 MA's), (36, 13331), (38, 13382), (40, 13391), (44, 13427), (46, 13442), (50, 13496), (57, 13526),

Gene: BirthdayBoy_21 Start: 14471, Stop: 14824, Start Num: 19

Candidate Starts for BirthdayBoy_21:

(17, 14456), (Start: 19 @14471 has 29 MA's), (28, 14537), (36, 14594), (40, 14654), (43, 14684), (49, 14750), (50, 14756), (52, 14765), (58, 14789),

Gene: BiteSize_15 Start: 9519, Stop: 9869, Start Num: 18

Candidate Starts for BiteSize_15:

(Start: 18 @9519 has 43 MA's), (20, 9528), (24, 9567), (30, 9597), (36, 9645), (41, 9708), (50, 9810), (52, 9819), (58, 9843),

Gene: Butterscotch_20 Start: 13189, Stop: 13551, Start Num: 18

Candidate Starts for Butterscotch_20:

(12, 13138), (Start: 15 @13159 has 1 MA's), (Start: 18 @13189 has 43 MA's), (24, 13237), (26, 13246), (Start: 31 @13270 has 1 MA's), (36, 13315), (38, 13366), (40, 13375), (44, 13411), (46, 13426), (50, 13480), (57, 13510),

Gene: Cborch11_20 Start: 13002, Stop: 13364, Start Num: 18

Candidate Starts for Cborch11_20:

(Start: 18 @13002 has 43 MA's), (23, 13047), (Start: 27 @13068 has 1 MA's), (36, 13137), (40, 13197), (42, 13218), (52, 13308), (54, 13314), (58, 13332), (59, 13341), (61, 13353),

Gene: Chill_21 Start: 13195, Stop: 13557, Start Num: 18

Candidate Starts for Chill_21:

(12, 13144), (Start: 15 @13165 has 1 MA's), (Start: 18 @13195 has 43 MA's), (24, 13243), (26, 13252), (Start: 31 @13276 has 1 MA's), (36, 13321), (38, 13372), (40, 13381), (44, 13417), (46, 13432), (50, 13486), (57, 13516),

Gene: Cuke_13 Start: 8734, Stop: 9114, Start Num: 18

Candidate Starts for Cuke_13:

(Start: 18 @8734 has 43 MA's), (21, 8752), (28, 8809), (29, 8815), (34, 8836), (36, 8866), (43, 8959), (50, 9031), (57, 9061), (59, 9073), (61, 9085),

Gene: Damien_19 Start: 13001, Stop: 13363, Start Num: 18

Candidate Starts for Damien_19:

(Start: 18 @13001 has 43 MA's), (23, 13046), (Start: 27 @13067 has 1 MA's), (36, 13136), (40, 13196), (52, 13307), (54, 13313), (58, 13331), (59, 13340), (61, 13352),

Gene: DaviePasture_20 Start: 14228, Stop: 14581, Start Num: 19

Candidate Starts for DaviePasture_20:

(13, 14180), (17, 14213), (Start: 19 @14228 has 29 MA's), (28, 14294), (36, 14351), (40, 14411), (43, 14441), (49, 14507), (50, 14513), (52, 14522), (58, 14546),

Gene: Delton_20 Start: 13201, Stop: 13563, Start Num: 18

Candidate Starts for Delton_20:

(12, 13150), (Start: 15 @13171 has 1 MA's), (Start: 18 @13201 has 43 MA's), (24, 13249), (26, 13258), (Start: 31 @13282 has 1 MA's), (36, 13327), (38, 13378), (40, 13387), (44, 13423), (46, 13438), (50, 13492), (57, 13522),

Gene: Djokovic_15 Start: 9519, Stop: 9869, Start Num: 18

Candidate Starts for Djokovic_15:

(Start: 18 @9519 has 43 MA's), (20, 9528), (24, 9567), (30, 9597), (36, 9645), (41, 9708), (50, 9810), (52, 9819), (58, 9843),

Gene: DoobyDoo_19 Start: 13405, Stop: 13758, Start Num: 19

Candidate Starts for DoobyDoo_19:

(13, 13357), (17, 13390), (Start: 19 @13405 has 29 MA's), (28, 13471), (36, 13528), (40, 13588), (43, 13618), (49, 13684), (50, 13690), (52, 13699), (58, 13723),

Gene: DrLupo_28 Start: 15206, Stop: 15577, Start Num: 18

Candidate Starts for DrLupo_28:

(Start: 18 @15206 has 43 MA's), (28, 15275), (33, 15299), (37, 15338), (45, 15431), (49, 15491), (54, 15512), (55, 15515), (58, 15530), (59, 15539), (60, 15548),

Gene: DumpTruck_19 Start: 13662, Stop: 14015, Start Num: 19

Candidate Starts for DumpTruck_19:

(1, 13527), (3, 13548), (8, 13575), (9, 13578), (11, 13596), (17, 13647), (Start: 19 @13662 has 29 MA's), (36, 13785), (43, 13875), (46, 13893), (50, 13947), (58, 13980), (61, 14001),

Gene: Erk16_20 Start: 13192, Stop: 13554, Start Num: 18

Candidate Starts for Erk16_20:

(12, 13141), (Start: 15 @13162 has 1 MA's), (Start: 18 @13192 has 43 MA's), (24, 13240), (26, 13249), (Start: 31 @13273 has 1 MA's), (36, 13318), (38, 13369), (40, 13378), (44, 13414), (46, 13429), (50, 13483), (57, 13513),

Gene: Erutan_20 Start: 13918, Stop: 14271, Start Num: 19

Candidate Starts for Erutan_20:

(13, 13870), (17, 13903), (Start: 19 @13918 has 29 MA's), (28, 13984), (36, 14041), (40, 14101), (43, 14131), (49, 14197), (50, 14203), (52, 14212), (58, 14236),

Gene: Fulcrum_21 Start: 14451, Stop: 14804, Start Num: 19

Candidate Starts for Fulcrum_21:

(17, 14436), (Start: 19 @14451 has 29 MA's), (28, 14517), (36, 14574), (40, 14634), (43, 14664), (49, 14730), (50, 14736), (52, 14745), (58, 14769),

Gene: GOATification_21 Start: 14451, Stop: 14804, Start Num: 19

Candidate Starts for GOATification_21:

(17, 14436), (Start: 19 @14451 has 29 MA's), (28, 14517), (36, 14574), (40, 14634), (43, 14664), (49, 14730), (50, 14736), (52, 14745), (58, 14769),

Gene: Genamy16_19 Start: 12025, Stop: 12378, Start Num: 19

Candidate Starts for Genamy16_19:

(13, 11977), (17, 12010), (Start: 19 @12025 has 29 MA's), (28, 12091), (36, 12148), (40, 12208), (43, 12238), (49, 12304), (50, 12310), (52, 12319), (58, 12343),

Gene: Gibbin_21 Start: 14511, Stop: 14864, Start Num: 19

Candidate Starts for Gibbin_21:

(13, 14463), (17, 14496), (Start: 19 @14511 has 29 MA's), (28, 14577), (36, 14634), (40, 14694), (43, 14724), (49, 14790), (50, 14796), (52, 14805), (58, 14829),

Gene: Giuseppe_20 Start: 13181, Stop: 13543, Start Num: 18

Candidate Starts for Giuseppe_20:

(12, 13130), (Start: 15 @13151 has 1 MA's), (Start: 18 @13181 has 43 MA's), (24, 13229), (26, 13238), (Start: 31 @13262 has 1 MA's), (36, 13307), (38, 13358), (40, 13367), (44, 13403), (46, 13418), (50, 13472), (57, 13502),

Gene: Gretellyn_20 Start: 14785, Stop: 15138, Start Num: 19

Candidate Starts for Gretellyn_20:

(13, 14737), (17, 14770), (Start: 19 @14785 has 29 MA's), (28, 14851), (36, 14908), (40, 14968), (43, 14998), (49, 15064), (50, 15070), (52, 15079), (58, 15103),

Gene: Gumball_19 Start: 13139, Stop: 13501, Start Num: 18

Candidate Starts for Gumball_19:

(12, 13088), (Start: 15 @13109 has 1 MA's), (Start: 18 @13139 has 43 MA's), (24, 13187), (26, 13196), (Start: 31 @13220 has 1 MA's), (36, 13265), (38, 13316), (40, 13325), (44, 13361), (46, 13376), (50, 13430), (57, 13460),

Gene: Hawkeye_22 Start: 13075, Stop: 13449, Start Num: 18

Candidate Starts for Hawkeye_22:

(Start: 18 @13075 has 43 MA's), (33, 13168), (36, 13201), (38, 13252), (44, 13297), (46, 13312), (50, 13366), (56, 13393), (58, 13399), (63, 13438),

Gene: Helpful_21 Start: 13189, Stop: 13551, Start Num: 18

Candidate Starts for Helpful_21:

(12, 13138), (Start: 15 @13159 has 1 MA's), (Start: 18 @13189 has 43 MA's), (24, 13237), (26, 13246), (Start: 31 @13270 has 1 MA's), (36, 13315), (38, 13366), (40, 13375), (44, 13411), (46, 13426), (50, 13480), (57, 13510),

Gene: Jalebi_20 Start: 14961, Stop: 15314, Start Num: 19

Candidate Starts for Jalebi_20:

(13, 14913), (17, 14946), (Start: 19 @14961 has 29 MA's), (28, 15027), (36, 15084), (40, 15144), (43, 15174), (49, 15240), (50, 15246), (52, 15255), (58, 15279),

Gene: Jamemuya19_17 Start: 12025, Stop: 12378, Start Num: 19

Candidate Starts for Jamemuya19_17:

(13, 11977), (17, 12010), (Start: 19 @12025 has 29 MA's), (28, 12091), (36, 12148), (40, 12208), (43, 12238), (49, 12304), (50, 12310), (52, 12319), (58, 12343),

Gene: KandZ_20 Start: 13289, Stop: 13651, Start Num: 18

Candidate Starts for KandZ_20:

(12, 13238), (Start: 15 @13259 has 1 MA's), (Start: 18 @13289 has 43 MA's), (24, 13337), (26, 13346), (Start: 31 @13370 has 1 MA's), (36, 13415), (38, 13466), (40, 13475), (44, 13511), (46, 13526), (50, 13580), (57, 13610),

Gene: Konstantine_24 Start: 14203, Stop: 14565, Start Num: 18

Candidate Starts for Konstantine_24:

(Start: 18 @14203 has 43 MA's), (23, 14248), (Start: 27 @14269 has 1 MA's), (36, 14338), (40, 14398), (42, 14419), (52, 14509), (54, 14515), (58, 14533), (59, 14542), (61, 14554),

Gene: Labelle_26 Start: 16380, Stop: 16748, Start Num: 18

Candidate Starts for Labelle_26:

(Start: 18 @16380 has 43 MA's), (45, 16602), (51, 16674), (52, 16677), (58, 16701), (60, 16719), (62, 16731),

Gene: Lambo_20 Start: 14455, Stop: 14808, Start Num: 19

Candidate Starts for Lambo_20:

(13, 14407), (17, 14440), (Start: 19 @14455 has 29 MA's), (28, 14521), (36, 14578), (40, 14638), (43, 14668), (49, 14734), (50, 14740), (52, 14749), (58, 14773),

Gene: Lila22_20 Start: 14409, Stop: 14762, Start Num: 19

Candidate Starts for Lila22_20:

(17, 14394), (Start: 19 @14409 has 29 MA's), (28, 14475), (36, 14532), (40, 14592), (43, 14622), (49, 14688), (50, 14694), (52, 14703), (58, 14727),

Gene: LilyPad_16 Start: 10238, Stop: 10588, Start Num: 18

Candidate Starts for LilyPad_16:

(10, 10166), (Start: 18 @10238 has 43 MA's), (30, 10316), (36, 10364), (46, 10475), (50, 10529), (52, 10538), (58, 10562),

Gene: LittleFella_17 Start: 12130, Stop: 12480, Start Num: 18

Candidate Starts for LittleFella_17:

(4, 12022), (14, 12085), (Start: 18 @12130 has 43 MA's), (30, 12208), (33, 12223), (36, 12256), (40, 12316), (50, 12418), (52, 12427), (58, 12451),

Gene: LuckyLeo_19 Start: 13740, Stop: 14093, Start Num: 19

Candidate Starts for LuckyLeo_19:

(2, 13614), (5, 13632), (6, 13635), (7, 13650), (17, 13725), (Start: 19 @13740 has 29 MA's), (35, 13836), (36, 13863), (38, 13914), (40, 13923), (43, 13953), (50, 14025), (52, 14034), (58, 14058),

Gene: Madi_15 Start: 9519, Stop: 9869, Start Num: 18

Candidate Starts for Madi_15:

(Start: 18 @9519 has 43 MA's), (20, 9528), (24, 9567), (30, 9597), (36, 9645), (41, 9708), (50, 9810), (52, 9819), (58, 9843),

Gene: Madruga_25 Start: 16049, Stop: 16417, Start Num: 18

Candidate Starts for Madruga_25:

(Start: 18 @16049 has 43 MA's), (21, 16064), (39, 16229), (45, 16271), (51, 16343), (52, 16346), (58, 16370), (60, 16388), (62, 16400),

Gene: Megatron06_21 Start: 13536, Stop: 13898, Start Num: 18

Candidate Starts for Megatron06_21:

(Start: 18 @13536 has 43 MA's), (23, 13581), (Start: 27 @13602 has 1 MA's), (36, 13671), (40, 13731), (52, 13842), (54, 13848), (58, 13866), (59, 13875), (61, 13887),

Gene: Mima20_19 Start: 14138, Stop: 14491, Start Num: 19

Candidate Starts for Mima20_19:

(13, 14090), (17, 14123), (Start: 19 @14138 has 29 MA's), (28, 14204), (36, 14261), (40, 14321), (43, 14351), (49, 14417), (50, 14423), (52, 14432), (58, 14456),

Gene: MoiGyank_22 Start: 14822, Stop: 15175, Start Num: 19

Candidate Starts for MoiGyank_22:

(17, 14807), (Start: 19 @14822 has 29 MA's), (28, 14888), (36, 14945), (40, 15005), (43, 15035), (49, 15101), (50, 15107), (52, 15116), (58, 15140),

Gene: Mopey_20 Start: 13189, Stop: 13551, Start Num: 18

Candidate Starts for Mopey_20:

(12, 13138), (Start: 15 @13159 has 1 MA's), (Start: 18 @13189 has 43 MA's), (24, 13237), (26, 13246), (Start: 31 @13270 has 1 MA's), (36, 13315), (38, 13366), (40, 13375), (44, 13411), (46, 13426), (50, 13480), (57, 13510),

Gene: NorManre_21 Start: 14017, Stop: 14370, Start Num: 19

Candidate Starts for NorManre_21:

(Start: 19 @14017 has 29 MA's), (28, 14083), (36, 14140), (40, 14200), (43, 14230), (49, 14296), (50, 14302), (52, 14311), (58, 14335),

Gene: Nova_20 Start: 13616, Stop: 13978, Start Num: 18

Candidate Starts for Nova_20:

(12, 13565), (Start: 15 @13586 has 1 MA's), (Start: 18 @13616 has 43 MA's), (24, 13664), (26, 13673), (Start: 31 @13697 has 1 MA's), (36, 13742), (38, 13793), (40, 13802), (44, 13838), (46, 13853), (50, 13907), (57, 13937),

Gene: NovaSharks_19 Start: 12025, Stop: 12378, Start Num: 19

Candidate Starts for NovaSharks_19:

(13, 11977), (17, 12010), (Start: 19 @12025 has 29 MA's), (28, 12091), (36, 12148), (40, 12208), (43, 12238), (49, 12304), (50, 12310), (52, 12319), (58, 12343),

Gene: Oaker_19 Start: 13260, Stop: 13622, Start Num: 18

Candidate Starts for Oaker_19:

(Start: 18 @13260 has 43 MA's), (23, 13305), (Start: 27 @13326 has 1 MA's), (36, 13395), (40, 13455), (42, 13476), (47, 13521), (52, 13566), (54, 13572), (58, 13590), (59, 13599), (61, 13611),

Gene: OtterstedtS21_20 Start: 14107, Stop: 14460, Start Num: 19

Candidate Starts for OtterstedtS21_20:

(13, 14059), (17, 14092), (Start: 19 @14107 has 29 MA's), (28, 14173), (36, 14230), (40, 14290), (43, 14320), (49, 14386), (50, 14392), (52, 14401), (58, 14425),

Gene: PBI1_21 Start: 13201, Stop: 13482, Start Num: 31

Candidate Starts for PBI1_21:

(12, 13069), (Start: 15 @13090 has 1 MA's), (Start: 18 @13120 has 43 MA's), (24, 13168), (26, 13177), (Start: 31 @13201 has 1 MA's), (36, 13246), (38, 13297), (40, 13306), (44, 13342), (46, 13357), (50, 13411), (57, 13441),

Gene: PLOT_21 Start: 13192, Stop: 13554, Start Num: 18

Candidate Starts for PLOT_21:

(12, 13141), (Start: 15 @13162 has 1 MA's), (Start: 18 @13192 has 43 MA's), (24, 13240), (26, 13249), (Start: 31 @13273 has 1 MA's), (36, 13318), (38, 13369), (40, 13378), (44, 13414), (46, 13429), (50, 13483), (57, 13513),

Gene: ParvusTarda_20 Start: 13589, Stop: 13942, Start Num: 19

Candidate Starts for ParvusTarda_20:

(13, 13541), (17, 13574), (Start: 19 @13589 has 29 MA's), (28, 13655), (36, 13712), (40, 13772), (43, 13802), (49, 13868), (50, 13874), (52, 13883), (58, 13907),

Gene: Patience_27 Start: 16939, Stop: 17307, Start Num: 18

Candidate Starts for Patience_27:

(Start: 18 @16939 has 43 MA's), (39, 17119), (45, 17161), (51, 17233), (52, 17236), (58, 17260), (60, 17278), (62, 17290),

Gene: Patos_21 Start: 14017, Stop: 14370, Start Num: 19

Candidate Starts for Patos_21:

(Start: 19 @14017 has 29 MA's), (28, 14083), (36, 14140), (40, 14200), (43, 14230), (49, 14296), (50, 14302), (52, 14311), (58, 14335),

Gene: Penelope2018_20 Start: 13189, Stop: 13551, Start Num: 18

Candidate Starts for Penelope2018_20:

(12, 13138), (Start: 15 @13159 has 1 MA's), (Start: 18 @13189 has 43 MA's), (24, 13237), (26, 13246), (Start: 31 @13270 has 1 MA's), (36, 13315), (38, 13366), (40, 13375), (44, 13411), (46, 13426), (50, 13480), (57, 13510),

Gene: Phreeze_19 Start: 13067, Stop: 13363, Start Num: 27

Candidate Starts for Phreeze_19:

(Start: 18 @13001 has 43 MA's), (23, 13046), (Start: 27 @13067 has 1 MA's), (36, 13136), (40, 13196), (52, 13307), (54, 13313), (58, 13331), (59, 13340), (61, 13352),

Gene: Prager_20 Start: 13201, Stop: 13563, Start Num: 18

Candidate Starts for Prager_20:

(12, 13150), (Start: 15 @13171 has 1 MA's), (Start: 18 @13201 has 43 MA's), (24, 13249), (26, 13258), (Start: 31 @13282 has 1 MA's), (36, 13327), (38, 13378), (40, 13387), (44, 13423), (46, 13438), (50, 13492), (57, 13522),

Gene: Predator_23 Start: 14526, Stop: 14885, Start Num: 18

Candidate Starts for Predator_23:

(Start: 18 @14526 has 43 MA's), (22, 14562), (23, 14571), (25, 14583), (Start: 31 @14616 has 1 MA's), (33, 14628), (36, 14661), (42, 14742), (48, 14793), (52, 14832), (54, 14838), (58, 14856), (61, 14877),

Gene: Puissant_18 Start: 13472, Stop: 13816, Start Num: 21

Candidate Starts for Puissant_18:

(Start: 18 @13457 has 43 MA's), (21, 13472), (23, 13502), (Start: 27 @13523 has 1 MA's), (33, 13559), (36, 13592), (42, 13673), (45, 13688), (53, 13766), (54, 13769), (58, 13787), (59, 13796), (61, 13808),

Gene: Ranch_20 Start: 12955, Stop: 13308, Start Num: 19

Candidate Starts for Ranch_20:

(13, 12907), (17, 12940), (Start: 19 @12955 has 29 MA's), (28, 13021), (36, 13078), (40, 13138), (43, 13168), (49, 13234), (50, 13240), (52, 13249), (58, 13273),

Gene: RazorC_18 Start: 12025, Stop: 12378, Start Num: 19

Candidate Starts for RazorC_18:

(13, 11977), (17, 12010), (Start: 19 @12025 has 29 MA's), (28, 12091), (36, 12148), (40, 12208), (43, 12238), (49, 12304), (50, 12310), (52, 12319), (58, 12343),

Gene: Rumi_19 Start: 12025, Stop: 12378, Start Num: 19

Candidate Starts for Rumi_19:

(13, 11977), (17, 12010), (Start: 19 @12025 has 29 MA's), (28, 12091), (36, 12148), (40, 12208), (43, 12238), (49, 12304), (50, 12310), (52, 12319), (58, 12343),

Gene: Sadboi_20 Start: 14785, Stop: 15138, Start Num: 19

Candidate Starts for Sadboi_20:

(13, 14737), (17, 14770), (Start: 19 @14785 has 29 MA's), (28, 14851), (36, 14908), (40, 14968), (43, 14998), (49, 15064), (50, 15070), (52, 15079), (58, 15103),

Gene: Sampudon_20 Start: 14961, Stop: 15314, Start Num: 19

Candidate Starts for Sampudon_20:

(13, 14913), (17, 14946), (Start: 19 @14961 has 29 MA's), (28, 15027), (36, 15084), (40, 15144), (43, 15174), (49, 15240), (50, 15246), (52, 15255), (58, 15279),

Gene: Sienna_15 Start: 9519, Stop: 9869, Start Num: 18

Candidate Starts for Sienna_15:

(Start: 18 @9519 has 43 MA's), (20, 9528), (24, 9567), (30, 9597), (36, 9645), (41, 9708), (50, 9810), (52, 9819), (58, 9843),

Gene: SirHarley_19 Start: 13121, Stop: 13483, Start Num: 18

Candidate Starts for SirHarley_19:

(12, 13070), (Start: 15 @13091 has 1 MA's), (Start: 18 @13121 has 43 MA's), (24, 13169), (26, 13178), (Start: 31 @13202 has 1 MA's), (36, 13247), (38, 13298), (40, 13307), (44, 13343), (46, 13358), (50, 13412), (57, 13442),

Gene: Suzy_16 Start: 10717, Stop: 11097, Start Num: 15

Candidate Starts for Suzy_16:

(Start: 15 @10717 has 1 MA's), (Start: 18 @10747 has 43 MA's), (20, 10756), (24, 10795), (30, 10825), (36, 10873), (41, 10936), (50, 11038), (58, 11071),

Gene: Terapin_15 Start: 9519, Stop: 9869, Start Num: 18

Candidate Starts for Terapin_15:

(Start: 18 @9519 has 43 MA's), (20, 9528), (24, 9567), (30, 9597), (36, 9645), (41, 9708), (50, 9810), (52, 9819), (58, 9843),

Gene: Thoth_20 Start: 13186, Stop: 13548, Start Num: 18

Candidate Starts for Thoth_20:

(12, 13135), (Start: 15 @13156 has 1 MA's), (16, 13165), (Start: 18 @13186 has 43 MA's), (24, 13234), (26, 13243), (Start: 31 @13267 has 1 MA's), (36, 13312), (38, 13363), (40, 13372), (44, 13408), (46, 13423), (50, 13477), (57, 13507),

Gene: Thumb_19 Start: 13002, Stop: 13364, Start Num: 18

Candidate Starts for Thumb_19:

(Start: 18 @13002 has 43 MA's), (23, 13047), (Start: 27 @13068 has 1 MA's), (36, 13137), (40, 13197), (52, 13308), (54, 13314), (58, 13332), (59, 13341), (61, 13353),

Gene: Tillicus_20 Start: 13319, Stop: 13687, Start Num: 17

Candidate Starts for Tillicus_20:

(13, 13286), (17, 13319), (Start: 19 @13334 has 29 MA's), (35, 13430), (36, 13457), (38, 13508), (40, 13517), (43, 13547), (50, 13619), (52, 13628), (58, 13652),

Gene: Troll4_20 Start: 13190, Stop: 13552, Start Num: 18

Candidate Starts for Troll4_20:

(12, 13139), (Start: 15 @13160 has 1 MA's), (Start: 18 @13190 has 43 MA's), (24, 13238), (26, 13247), (Start: 31 @13271 has 1 MA's), (36, 13316), (38, 13367), (40, 13376), (44, 13412), (46, 13427), (50, 13481), (57, 13511),

Gene: Visconti_20 Start: 13199, Stop: 13561, Start Num: 18

Candidate Starts for Visconti_20:

(12, 13148), (Start: 15 @13169 has 1 MA's), (16, 13178), (Start: 18 @13199 has 43 MA's), (24, 13247), (26, 13256), (Start: 31 @13280 has 1 MA's), (36, 13325), (38, 13376), (40, 13385), (44, 13421), (46, 13436), (50, 13490), (57, 13520),

Gene: WaldoWhy_21 Start: 13195, Stop: 13557, Start Num: 18

Candidate Starts for WaldoWhy_21:

(12, 13144), (Start: 15 @13165 has 1 MA's), (Start: 18 @13195 has 43 MA's), (24, 13243), (26, 13252), (Start: 31 @13276 has 1 MA's), (36, 13321), (38, 13372), (40, 13381), (44, 13417), (46, 13432), (50, 13486), (57, 13516),

Gene: Wojtek_19 Start: 13662, Stop: 14015, Start Num: 19

Candidate Starts for Wojtek_19:

(13, 13614), (17, 13647), (Start: 19 @13662 has 29 MA's), (28, 13728), (36, 13785), (40, 13845), (43, 13875), (49, 13941), (50, 13947), (52, 13956), (58, 13980),

Gene: Xenia2_17 Start: 13689, Stop: 14057, Start Num: 17

Candidate Starts for Xenia2_17:

(1, 13569), (3, 13590), (8, 13617), (9, 13620), (11, 13638), (17, 13689), (Start: 19 @13704 has 29 MA's), (36, 13827), (43, 13917), (46, 13935), (50, 13989), (58, 14022), (61, 14043),

Gene: Yikes_21 Start: 15046, Stop: 15399, Start Num: 19

Candidate Starts for Yikes_21:

(13, 14998), (17, 15031), (Start: 19 @15046 has 29 MA's), (28, 15112), (36, 15169), (40, 15229), (43, 15259), (49, 15325), (50, 15331), (52, 15340), (58, 15364),

Gene: Zany_19 Start: 14175, Stop: 14528, Start Num: 19

Candidate Starts for Zany_19:

(13, 14127), (17, 14160), (Start: 19 @14175 has 29 MA's), (28, 14241), (32, 14259), (36, 14298), (40, 14358), (43, 14388), (49, 14454), (50, 14460), (52, 14469), (58, 14493),