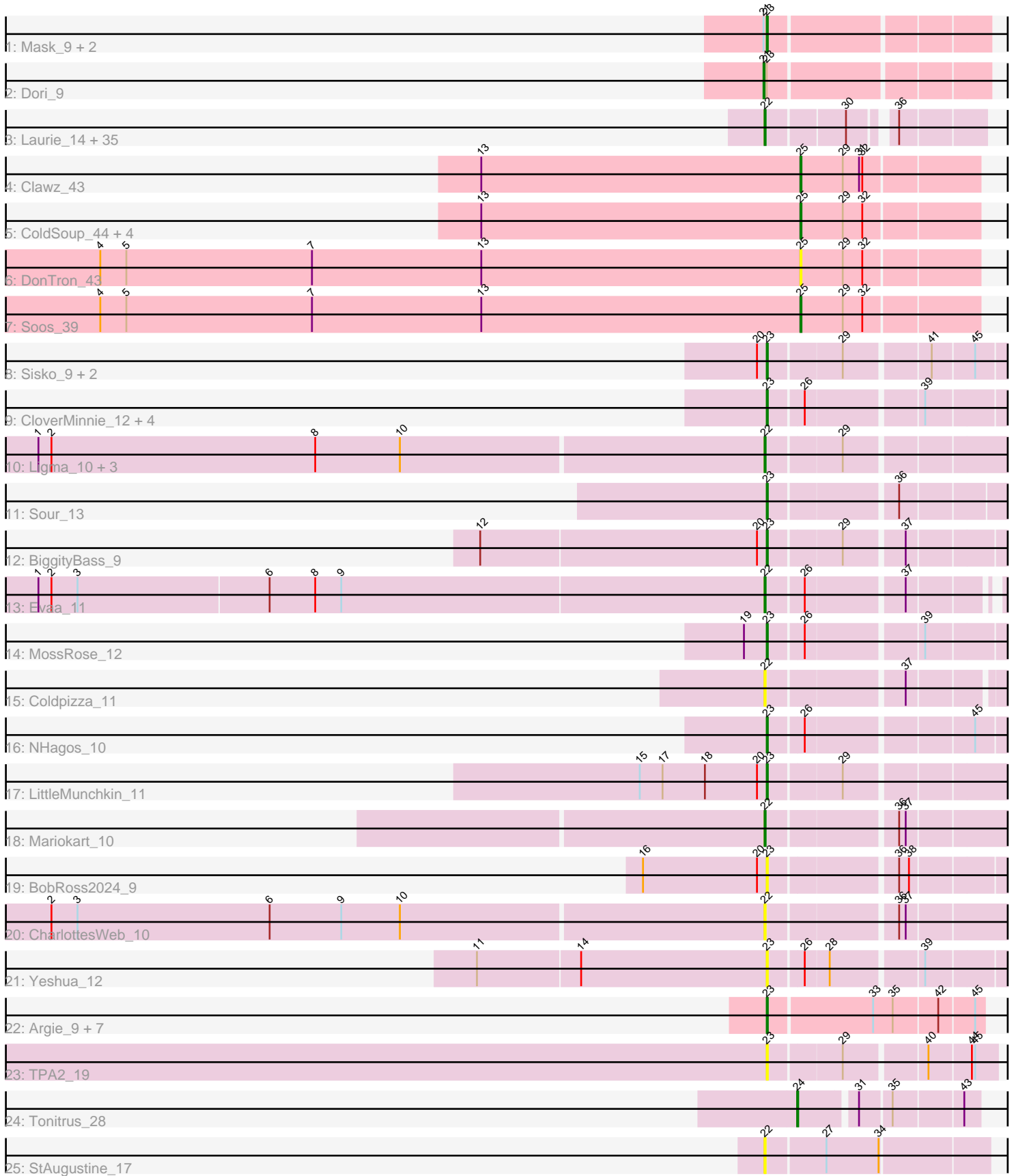


Pham 202876



Note: Tracks are now grouped by subcluster and scaled. Switching in subcluster is indicated by changes in track color. Track scale is now set by default to display the region 30 bp upstream of start 1 to 30 bp downstream of the last possible start. If this default region is judged to be packed too tightly with annotated starts, the track will be further scaled to only show that region of the ORF with annotated starts. This action will be indicated by adding "Zoomed" to the title. For starts, yellow indicates the location of called starts comprised solely of Glimmer/GeneMark auto-annotations, green indicates the location of called starts with at least 1 manual gene annotation.

Pham 202876 Report

This analysis was run 01/18/25 on database version 583.

Pham number 202876 has 82 members, 16 are drafts.

Phages represented in each track:

- Track 1 : Mask_9, Sejanus_9, Mao1_8
- Track 2 : Dori_9
- Track 3 : Laurie_14, Tinciduntolum_15, Allegro_14, Blocker23_14, Lars_14, Opia_14, Tres_14, Faze9_14, Rhinoforte_14, Ares_14, Godines_14, Lephleur_14, Rosebush_14, MasterPo_14, Holeinone_14, ItsyBitsy1_14, FrenchFry_14, Bananafish_14, Hedgerow_14, Vic9_15, Brownie5_14, Glass_14, TA17A_14, Kaleb_14, Calamitous_14, LilSmirk_14, West99_14, Eaglehorse_14, Phantasmagoria_14, Boyle_14, LizLemon_14, Coffee_14, Kheth_14, Arbiter_14, Kolhan_14, Sabella_14
- Track 4 : Clawz_43
- Track 5 : ColdSoup_44, KingstonB_43, Amo99_44, Jollymon_44, Sting_42
- Track 6 : DonTron_43
- Track 7 : Soos_39
- Track 8 : Sisko_9, Yago84_9, AnClar_9
- Track 9 : CloverMinnie_12, Wooper_12, CaiB_12, MakoManhole_12, AnarQue_12
- Track 10 : Ligma_10, Fresco_10, Axumite_10, Shatter_10
- Track 11 : Sour_13
- Track 12 : BiggityBass_9
- Track 13 : Evaa_11
- Track 14 : MossRose_12
- Track 15 : Coldpizza_11
- Track 16 : NHagos_10
- Track 17 : LittleMunchkin_11
- Track 18 : Mariokart_10
- Track 19 : BobRoss2024_9
- Track 20 : CharlottesWeb_10
- Track 21 : Yeshua_12
- Track 22 : Argie_9, Taptic_8, D12_08, PR_08, Cepens_8, GodPhather_9, Jeon_8, Megabear_8
- Track 23 : TPA2_19
- Track 24 : Tonitrus_28
- Track 25 : StAugustine_17

Summary of Final Annotations (See graph section above for start numbers):

The start number called the most often in the published annotations is 22, it was called in 37 of the 66 non-draft genes in the pham.

Genes that call this "Most Annotated" start:

- Allegro_14, Arbiter_14, Ares_14, Axumite_10, Bananafish_14, Blocker23_14, Boyle_14, Brownie5_14, Calamitous_14, CharlottesWeb_10, Coffee_14, Coldpizza_11, Eaglehorse_14, Evaa_11, Faze9_14, FrenchFry_14, Fresco_10, Glass_14, Godines_14, Hedgerow_14, Holeinone_14, ItsyBitsy1_14, Kaleb_14, Kheth_14, Kolhan_14, Lars_14, Laurie_14, Lephleur_14, Ligma_10, LilSmirk_14, LizLemon_14, Mariokart_10, MasterPo_14, Opia_14, Phantasmagoria_14, Rhinoforte_14, Rosebush_14, Sabella_14, Shatter_10, StAugustine_17, TA17A_14, Tinciduntolum_15, Tres_14, Vic9_15, West99_14,

Genes that have the "Most Annotated" start but do not call it:

-

Genes that do not have the "Most Annotated" start:

- Amo99_44, AnClar_9, AnarQue_12, Argie_9, BiggityBass_9, BobRoss2024_9, CaiB_12, Cepens_8, Clawz_43, CloverMinnie_12, ColdSoup_44, D12_08, DonTron_43, Dori_9, GodPhather_9, Jeon_8, Jollymon_44, KingstonB_43, LittleMunchkin_11, MakoManhole_12, Mao1_8, Mask_9, Megabear_8, MossRose_12, NHagos_10, PR_08, Sejanus_9, Sisko_9, Soos_39, Sour_13, Sting_42, TPA2_19, Taptic_8, Tonitrus_28, Wooper_12, Yago84_9, Yeshua_12,

Summary by start number:

Start 21:

- Found in 4 of 82 (4.9%) of genes in pham
- Manual Annotations of this start: 1 of 66
- Called 25.0% of time when present
- Phage (with cluster) where this start called: Dori_9 (AD),

Start 22:

- Found in 45 of 82 (54.9%) of genes in pham
- Manual Annotations of this start: 37 of 66
- Called 100.0% of time when present
- Phage (with cluster) where this start called: Allegro_14 (B2), Arbiter_14 (B2), Ares_14 (B2), Axumite_10 (DR), Bananafish_14 (B2), Blocker23_14 (B2), Boyle_14 (B2), Brownie5_14 (B2), Calamitous_14 (B2), CharlottesWeb_10 (DR), Coffee_14 (B2), Coldpizza_11 (DR), Eaglehorse_14 (B2), Evaa_11 (DR), Faze9_14 (B2), FrenchFry_14 (B2), Fresco_10 (DR), Glass_14 (B2), Godines_14 (B2), Hedgerow_14 (B2), Holeinone_14 (B2), ItsyBitsy1_14 (B2), Kaleb_14 (B2), Kheth_14 (B2), Kolhan_14 (B2), Lars_14 (B2), Laurie_14 (B2), Lephleur_14 (B2), Ligma_10 (DR), LilSmirk_14 (B2), LizLemon_14 (B2), Mariokart_10 (DR), MasterPo_14 (B2), Opia_14 (B2), Phantasmagoria_14 (B2), Rhinoforte_14 (B2), Rosebush_14 (B2), Sabella_14 (B2), Shatter_10 (DR), StAugustine_17 (singleton), TA17A_14 (B2), Tinciduntolum_15 (B2), Tres_14 (B2), Vic9_15 (B2), West99_14 (B2),

Start 23:

- Found in 28 of 82 (34.1%) of genes in pham
- Manual Annotations of this start: 24 of 66
- Called 96.4% of time when present

- Phage (with cluster) where this start called: AnClar_9 (DR), AnarQue_12 (DR), Argie_9 (W), BiggityBass_9 (DR), BobRoss2024_9 (DR), CaiB_12 (DR), Cepens_8 (W), CloverMinnie_12 (DR), D12_08 (W), GodPhather_9 (W), Jeon_8 (W), LittleMunchkin_11 (DR), MakoManhole_12 (DR), Mao1_8 (AD), Mask_9 (AD), Megabear_8 (W), MossRose_12 (DR), NHagos_10 (DR), PR_08 (W), Sejanus_9 (AD), Sisko_9 (DR), Sour_13 (DR), TPA2_19 (singleton), Taptic_8 (W), Wooper_12 (DR), Yago84_9 (DR), Yeshua_12 (DR),

Start 24:

- Found in 1 of 82 (1.2%) of genes in pham
- Manual Annotations of this start: 1 of 66
- Called 100.0% of time when present
- Phage (with cluster) where this start called: Tonitrus_28 (singleton),

Start 25:

- Found in 8 of 82 (9.8%) of genes in pham
- Manual Annotations of this start: 3 of 66
- Called 100.0% of time when present
- Phage (with cluster) where this start called: Amo99_44 (CP), Clawz_43 (CP), ColdSoup_44 (CP), DonTron_43 (CP), Jollymon_44 (CP), KingstonB_43 (CP), Soos_39 (CP), Sting_42 (CP),

Summary by clusters:

There are 6 clusters represented in this pham: singleton, AD, B2, W, CP, DR,

Info for manual annotations of cluster AD:

- Start number 21 was manually annotated 1 time for cluster AD.
- Start number 23 was manually annotated 3 times for cluster AD.

Info for manual annotations of cluster B2:

- Start number 22 was manually annotated 31 times for cluster B2.

Info for manual annotations of cluster CP:

- Start number 25 was manually annotated 3 times for cluster CP.

Info for manual annotations of cluster DR:

- Start number 22 was manually annotated 6 times for cluster DR.
- Start number 23 was manually annotated 13 times for cluster DR.

Info for manual annotations of cluster W:

- Start number 23 was manually annotated 8 times for cluster W.

Gene Information:

Gene: Allegro_14 Start: 12064, Stop: 12237, Start Num: 22

Candidate Starts for Allegro_14:

(Start: 22 @12064 has 37 MA's), (30, 12130), (36, 12163),

Gene: Amo99_44 Start: 22933, Stop: 23091, Start Num: 25

Candidate Starts for Amo99_44:

(13, 22639), (Start: 25 @22933 has 3 MA's), (29, 22972), (32, 22990),

Gene: AnClar_9 Start: 9843, Stop: 10046, Start Num: 23

Candidate Starts for AnClar_9:

(20, 9834), (Start: 23 @9843 has 24 MA's), (29, 9906), (41, 9978), (45, 10014),

Gene: AnarQue_12 Start: 11030, Stop: 11233, Start Num: 23

Candidate Starts for AnarQue_12:

(Start: 23 @11030 has 24 MA's), (26, 11060), (39, 11159),

Gene: Arbiter_14 Start: 12154, Stop: 12327, Start Num: 22

Candidate Starts for Arbiter_14:

(Start: 22 @12154 has 37 MA's), (30, 12220), (36, 12253),

Gene: Ares_14 Start: 12064, Stop: 12237, Start Num: 22

Candidate Starts for Ares_14:

(Start: 22 @12064 has 37 MA's), (30, 12130), (36, 12163),

Gene: Argie_9 Start: 10545, Stop: 10733, Start Num: 23

Candidate Starts for Argie_9:

(Start: 23 @10545 has 24 MA's), (33, 10638), (35, 10656), (42, 10695), (45, 10725),

Gene: Axumite_10 Start: 9533, Stop: 9739, Start Num: 22

Candidate Starts for Axumite_10:

(1, 8870), (2, 8882), (8, 9125), (10, 9203), (Start: 22 @9533 has 37 MA's), (29, 9596),

Gene: Bananafish_14 Start: 12064, Stop: 12237, Start Num: 22

Candidate Starts for Bananafish_14:

(Start: 22 @12064 has 37 MA's), (30, 12130), (36, 12163),

Gene: BiggityBass_9 Start: 9351, Stop: 9554, Start Num: 23

Candidate Starts for BiggityBass_9:

(12, 9090), (20, 9342), (Start: 23 @9351 has 24 MA's), (29, 9414), (37, 9465),

Gene: Blocker23_14 Start: 12181, Stop: 12354, Start Num: 22

Candidate Starts for Blocker23_14:

(Start: 22 @12181 has 37 MA's), (30, 12247), (36, 12280),

Gene: BobRoss2024_9 Start: 9382, Stop: 9585, Start Num: 23

Candidate Starts for BobRoss2024_9:

(16, 9268), (20, 9373), (Start: 23 @9382 has 24 MA's), (36, 9490), (38, 9499),

Gene: Boyle_14 Start: 12181, Stop: 12354, Start Num: 22

Candidate Starts for Boyle_14:

(Start: 22 @12181 has 37 MA's), (30, 12247), (36, 12280),

Gene: Brownie5_14 Start: 12181, Stop: 12354, Start Num: 22

Candidate Starts for Brownie5_14:

(Start: 22 @12181 has 37 MA's), (30, 12247), (36, 12280),

Gene: CaiB_12 Start: 11030, Stop: 11233, Start Num: 23

Candidate Starts for CaiB_12:

(Start: 23 @11030 has 24 MA's), (26, 11060), (39, 11159),

Gene: Calamitous_14 Start: 12064, Stop: 12237, Start Num: 22

Candidate Starts for Calamitous_14:

(Start: 22 @12064 has 37 MA's), (30, 12130), (36, 12163),

Gene: Cepens_8 Start: 10284, Stop: 10472, Start Num: 23

Candidate Starts for Cepens_8:

(Start: 23 @10284 has 24 MA's), (33, 10377), (35, 10395), (42, 10434), (45, 10464),

Gene: CharlottesWeb_10 Start: 9585, Stop: 9791, Start Num: 22

Candidate Starts for CharlottesWeb_10:

(2, 8934), (3, 8958), (6, 9135), (9, 9201), (10, 9255), (Start: 22 @9585 has 37 MA's), (36, 9693), (37, 9699),

Gene: Clawz_43 Start: 22851, Stop: 23009, Start Num: 25

Candidate Starts for Clawz_43:

(13, 22557), (Start: 25 @22851 has 3 MA's), (29, 22890), (31, 22905), (32, 22908),

Gene: CloverMinnie_12 Start: 11030, Stop: 11233, Start Num: 23

Candidate Starts for CloverMinnie_12:

(Start: 23 @11030 has 24 MA's), (26, 11060), (39, 11159),

Gene: Coffee_14 Start: 12181, Stop: 12354, Start Num: 22

Candidate Starts for Coffee_14:

(Start: 22 @12181 has 37 MA's), (30, 12247), (36, 12280),

Gene: ColdSoup_44 Start: 22933, Stop: 23091, Start Num: 25

Candidate Starts for ColdSoup_44:

(13, 22639), (Start: 25 @22933 has 3 MA's), (29, 22972), (32, 22990),

Gene: Coldpizza_11 Start: 11468, Stop: 11665, Start Num: 22

Candidate Starts for Coldpizza_11:

(Start: 22 @11468 has 37 MA's), (37, 11582),

Gene: D12_08 Start: 10239, Stop: 10427, Start Num: 23

Candidate Starts for D12_08:

(Start: 23 @10239 has 24 MA's), (33, 10332), (35, 10350), (42, 10389), (45, 10419),

Gene: DonTron_43 Start: 23003, Stop: 23161, Start Num: 25

Candidate Starts for DonTron_43:

(4, 22358), (5, 22382), (7, 22553), (13, 22709), (Start: 25 @23003 has 3 MA's), (29, 23042), (32, 23060),

Gene: Dori_9 Start: 8150, Stop: 8341, Start Num: 21

Candidate Starts for Dori_9:

(Start: 21 @8150 has 1 MA's), (Start: 23 @8153 has 24 MA's),

Gene: Eaglehorse_14 Start: 12082, Stop: 12255, Start Num: 22

Candidate Starts for Eaglehorse_14:

(Start: 22 @12082 has 37 MA's), (30, 12148), (36, 12181),

Gene: Evaa_11 Start: 10856, Stop: 11044, Start Num: 22

Candidate Starts for Evaa_11:

(1, 10193), (2, 10205), (3, 10229), (6, 10403), (8, 10445), (9, 10469), (Start: 22 @10856 has 37 MA's), (26, 10886), (37, 10970),

Gene: Faze9_14 Start: 12181, Stop: 12354, Start Num: 22
Candidate Starts for Faze9_14:
(Start: 22 @12181 has 37 MA's), (30, 12247), (36, 12280),

Gene: FrenchFry_14 Start: 12181, Stop: 12354, Start Num: 22
Candidate Starts for FrenchFry_14:
(Start: 22 @12181 has 37 MA's), (30, 12247), (36, 12280),

Gene: Fresco_10 Start: 9533, Stop: 9739, Start Num: 22
Candidate Starts for Fresco_10:
(1, 8870), (2, 8882), (8, 9125), (10, 9203), (Start: 22 @9533 has 37 MA's), (29, 9596),

Gene: Glass_14 Start: 12181, Stop: 12354, Start Num: 22
Candidate Starts for Glass_14:
(Start: 22 @12181 has 37 MA's), (30, 12247), (36, 12280),

Gene: GodPhather_9 Start: 10542, Stop: 10730, Start Num: 23
Candidate Starts for GodPhather_9:
(Start: 23 @10542 has 24 MA's), (33, 10635), (35, 10653), (42, 10692), (45, 10722),

Gene: Godines_14 Start: 12064, Stop: 12237, Start Num: 22
Candidate Starts for Godines_14:
(Start: 22 @12064 has 37 MA's), (30, 12130), (36, 12163),

Gene: Hedgerow_14 Start: 12163, Stop: 12336, Start Num: 22
Candidate Starts for Hedgerow_14:
(Start: 22 @12163 has 37 MA's), (30, 12229), (36, 12262),

Gene: Holeinone_14 Start: 12063, Stop: 12236, Start Num: 22
Candidate Starts for Holeinone_14:
(Start: 22 @12063 has 37 MA's), (30, 12129), (36, 12162),

Gene: ItsyBitsy1_14 Start: 12055, Stop: 12228, Start Num: 22
Candidate Starts for ItsyBitsy1_14:
(Start: 22 @12055 has 37 MA's), (30, 12121), (36, 12154),

Gene: Jeon_8 Start: 10272, Stop: 10460, Start Num: 23
Candidate Starts for Jeon_8:
(Start: 23 @10272 has 24 MA's), (33, 10365), (35, 10383), (42, 10422), (45, 10452),

Gene: Jollymon_44 Start: 22933, Stop: 23091, Start Num: 25
Candidate Starts for Jollymon_44:
(13, 22639), (Start: 25 @22933 has 3 MA's), (29, 22972), (32, 22990),

Gene: Kaleb_14 Start: 12181, Stop: 12354, Start Num: 22
Candidate Starts for Kaleb_14:
(Start: 22 @12181 has 37 MA's), (30, 12247), (36, 12280),

Gene: Kheth_14 Start: 12064, Stop: 12237, Start Num: 22
Candidate Starts for Kheth_14:

(Start: 22 @12064 has 37 MA's), (30, 12130), (36, 12163),

Gene: KingstonB_43 Start: 22441, Stop: 22599, Start Num: 25

Candidate Starts for KingstonB_43:

(13, 22147), (Start: 25 @22441 has 3 MA's), (29, 22480), (32, 22498),

Gene: Kolhan_14 Start: 12064, Stop: 12237, Start Num: 22

Candidate Starts for Kolhan_14:

(Start: 22 @12064 has 37 MA's), (30, 12130), (36, 12163),

Gene: Lars_14 Start: 12181, Stop: 12354, Start Num: 22

Candidate Starts for Lars_14:

(Start: 22 @12181 has 37 MA's), (30, 12247), (36, 12280),

Gene: Laurie_14 Start: 12065, Stop: 12238, Start Num: 22

Candidate Starts for Laurie_14:

(Start: 22 @12065 has 37 MA's), (30, 12131), (36, 12164),

Gene: Lephleur_14 Start: 12064, Stop: 12237, Start Num: 22

Candidate Starts for Lephleur_14:

(Start: 22 @12064 has 37 MA's), (30, 12130), (36, 12163),

Gene: Ligma_10 Start: 9533, Stop: 9739, Start Num: 22

Candidate Starts for Ligma_10:

(1, 8870), (2, 8882), (8, 9125), (10, 9203), (Start: 22 @9533 has 37 MA's), (29, 9596),

Gene: LilSmirk_14 Start: 12064, Stop: 12237, Start Num: 22

Candidate Starts for LilSmirk_14:

(Start: 22 @12064 has 37 MA's), (30, 12130), (36, 12163),

Gene: LittleMunchkin_11 Start: 10824, Stop: 11030, Start Num: 23

Candidate Starts for LittleMunchkin_11:

(15, 10707), (17, 10728), (18, 10767), (20, 10815), (Start: 23 @10824 has 24 MA's), (29, 10887),

Gene: LizLemon_14 Start: 12181, Stop: 12354, Start Num: 22

Candidate Starts for LizLemon_14:

(Start: 22 @12181 has 37 MA's), (30, 12247), (36, 12280),

Gene: MakoManhole_12 Start: 11030, Stop: 11233, Start Num: 23

Candidate Starts for MakoManhole_12:

(Start: 23 @11030 has 24 MA's), (26, 11060), (39, 11159),

Gene: Mao1_8 Start: 8549, Stop: 8737, Start Num: 23

Candidate Starts for Mao1_8:

(Start: 21 @8546 has 1 MA's), (Start: 23 @8549 has 24 MA's),

Gene: Mariokart_10 Start: 9585, Stop: 9791, Start Num: 22

Candidate Starts for Mariokart_10:

(Start: 22 @9585 has 37 MA's), (36, 9693), (37, 9699),

Gene: Mask_9 Start: 8550, Stop: 8738, Start Num: 23

Candidate Starts for Mask_9:

(Start: 21 @8547 has 1 MA's), (Start: 23 @8550 has 24 MA's),

Gene: MasterPo_14 Start: 12064, Stop: 12237, Start Num: 22

Candidate Starts for MasterPo_14:

(Start: 22 @12064 has 37 MA's), (30, 12130), (36, 12163),

Gene: Megabear_8 Start: 10239, Stop: 10427, Start Num: 23

Candidate Starts for Megabear_8:

(Start: 23 @10239 has 24 MA's), (33, 10332), (35, 10350), (42, 10389), (45, 10419),

Gene: MossRose_12 Start: 11030, Stop: 11233, Start Num: 23

Candidate Starts for MossRose_12:

(19, 11009), (Start: 23 @11030 has 24 MA's), (26, 11060), (39, 11159),

Gene: NHagos_10 Start: 9514, Stop: 9717, Start Num: 23

Candidate Starts for NHagos_10:

(Start: 23 @9514 has 24 MA's), (26, 9544), (45, 9685),

Gene: Opia_14 Start: 12064, Stop: 12237, Start Num: 22

Candidate Starts for Opia_14:

(Start: 22 @12064 has 37 MA's), (30, 12130), (36, 12163),

Gene: PR_08 Start: 10239, Stop: 10427, Start Num: 23

Candidate Starts for PR_08:

(Start: 23 @10239 has 24 MA's), (33, 10332), (35, 10350), (42, 10389), (45, 10419),

Gene: Phantasmagoria_14 Start: 12064, Stop: 12237, Start Num: 22

Candidate Starts for Phantasmagoria_14:

(Start: 22 @12064 has 37 MA's), (30, 12130), (36, 12163),

Gene: Rhinoforte_14 Start: 12181, Stop: 12354, Start Num: 22

Candidate Starts for Rhinoforte_14:

(Start: 22 @12181 has 37 MA's), (30, 12247), (36, 12280),

Gene: Rosebush_14 Start: 12181, Stop: 12354, Start Num: 22

Candidate Starts for Rosebush_14:

(Start: 22 @12181 has 37 MA's), (30, 12247), (36, 12280),

Gene: Sabella_14 Start: 12064, Stop: 12237, Start Num: 22

Candidate Starts for Sabella_14:

(Start: 22 @12064 has 37 MA's), (30, 12130), (36, 12163),

Gene: Sejanus_9 Start: 9366, Stop: 9554, Start Num: 23

Candidate Starts for Sejanus_9:

(Start: 21 @9363 has 1 MA's), (Start: 23 @9366 has 24 MA's),

Gene: Shatter_10 Start: 9533, Stop: 9739, Start Num: 22

Candidate Starts for Shatter_10:

(1, 8870), (2, 8882), (8, 9125), (10, 9203), (Start: 22 @9533 has 37 MA's), (29, 9596),

Gene: Sisko_9 Start: 9345, Stop: 9548, Start Num: 23

Candidate Starts for Sisko_9:

(20, 9336), (Start: 23 @9345 has 24 MA's), (29, 9408), (41, 9480), (45, 9516),

Gene: Soos_39 Start: 22170, Stop: 22328, Start Num: 25
Candidate Starts for Soos_39:
(4, 21525), (5, 21549), (7, 21720), (13, 21876), (Start: 25 @22170 has 3 MA's), (29, 22209), (32, 22227),

Gene: Sour_13 Start: 11191, Stop: 11394, Start Num: 23
Candidate Starts for Sour_13:
(Start: 23 @11191 has 24 MA's), (36, 11299),

Gene: StAugustine_17 Start: 12941, Stop: 13135, Start Num: 22
Candidate Starts for StAugustine_17:
(Start: 22 @12941 has 37 MA's), (27, 12992), (34, 13040),

Gene: Sting_42 Start: 22609, Stop: 22767, Start Num: 25
Candidate Starts for Sting_42:
(13, 22315), (Start: 25 @22609 has 3 MA's), (29, 22648), (32, 22666),

Gene: TA17A_14 Start: 12064, Stop: 12237, Start Num: 22
Candidate Starts for TA17A_14:
(Start: 22 @12064 has 37 MA's), (30, 12130), (36, 12163),

Gene: TPA2_19 Start: 12170, Stop: 12361, Start Num: 23
Candidate Starts for TPA2_19:
(Start: 23 @12170 has 24 MA's), (29, 12233), (40, 12302), (44, 12338), (45, 12341),

Gene: Taptic_8 Start: 10239, Stop: 10427, Start Num: 23
Candidate Starts for Taptic_8:
(Start: 23 @10239 has 24 MA's), (33, 10332), (35, 10350), (42, 10389), (45, 10419),

Gene: Tinciduntolum_15 Start: 12180, Stop: 12353, Start Num: 22
Candidate Starts for Tinciduntolum_15:
(Start: 22 @12180 has 37 MA's), (30, 12246), (36, 12279),

Gene: Tonitrus_28 Start: 18735, Stop: 18884, Start Num: 24
Candidate Starts for Tonitrus_28:
(Start: 24 @18735 has 1 MA's), (31, 18783), (35, 18810), (43, 18870),

Gene: Tres_14 Start: 12064, Stop: 12237, Start Num: 22
Candidate Starts for Tres_14:
(Start: 22 @12064 has 37 MA's), (30, 12130), (36, 12163),

Gene: Vic9_15 Start: 12507, Stop: 12680, Start Num: 22
Candidate Starts for Vic9_15:
(Start: 22 @12507 has 37 MA's), (30, 12573), (36, 12606),

Gene: West99_14 Start: 12181, Stop: 12354, Start Num: 22
Candidate Starts for West99_14:
(Start: 22 @12181 has 37 MA's), (30, 12247), (36, 12280),

Gene: Wooper_12 Start: 11030, Stop: 11233, Start Num: 23
Candidate Starts for Wooper_12:
(Start: 23 @11030 has 24 MA's), (26, 11060), (39, 11159),

Gene: Yago84_9 Start: 9354, Stop: 9557, Start Num: 23

Candidate Starts for Yago84_9:

(20, 9345), (Start: 23 @9354 has 24 MA's), (29, 9417), (41, 9489), (45, 9525),

Gene: Yeshua_12 Start: 11034, Stop: 11237, Start Num: 23

Candidate Starts for Yeshua_12:

(11, 10770), (14, 10863), (Start: 23 @11034 has 24 MA's), (26, 11064), (28, 11085), (39, 11163),