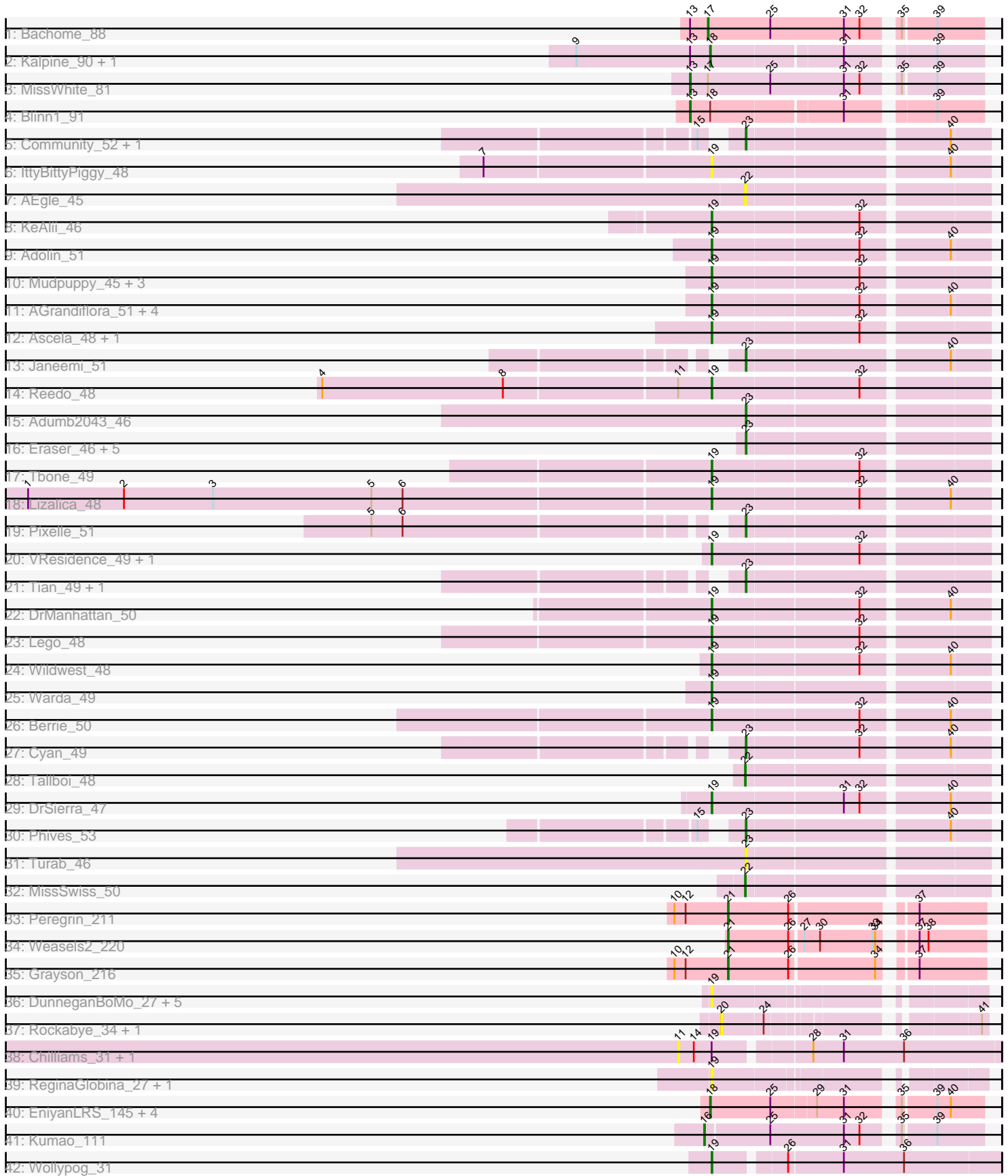


Pham 202910



Note: Tracks are now grouped by subcluster and scaled. Switching in subcluster is indicated by changes in track color. Track scale is now set by default to display the region 30 bp upstream of start 1 to 30 bp downstream of the last possible start. If this default region is judged to be packed too tightly with annotated starts, the track will be further scaled to only show that region of the ORF with annotated starts. This action will be indicated by adding "Zoomed" to the title. For starts, yellow indicates the location of called starts comprised solely of Glimmer/GeneMark auto-annotations, green indicates the location of called starts with at least 1 manual gene annotation.

Pham 202910 Report

This analysis was run 01/18/25 on database version 583.

Pham number 202910 has 71 members, 20 are drafts.

Phages represented in each track:

- Track 1 : Bachome_88
- Track 2 : Kalpine_90, Trixie_87
- Track 3 : MissWhite_81
- Track 4 : Blinn1_91
- Track 5 : Community_52, Tuck_52
- Track 6 : IttyBittyPiggy_48
- Track 7 : AEgle_45
- Track 8 : KeAlii_46
- Track 9 : Adolin_51
- Track 10 : Mudpuppy_45, YesChef_49, Tutumahutu_50, Powerpuff_51
- Track 11 : AGrandiflora_51, Joemato_49, Simpson_51, Kaylissa_50, JohnDoe_49
- Track 12 : Ascela_48, Iter_48
- Track 13 : Janeemi_51
- Track 14 : Reedo_48
- Track 15 : Adumb2043_46
- Track 16 : Eraser_46, Asa16_46, Elezi_46, London_46, Niobe_46, Jstan_48
- Track 17 : Tbone_49
- Track 18 : Lizalica_48
- Track 19 : Pixelle_51
- Track 20 : VResidence_49, Nitro_48
- Track 21 : Tian_49, Amyev_50
- Track 22 : DrManhattan_50
- Track 23 : Lego_48
- Track 24 : Wildwest_48
- Track 25 : Warda_49
- Track 26 : Berrie_50
- Track 27 : Cyan_49
- Track 28 : Tallboi_48
- Track 29 : DrSierra_47
- Track 30 : Phives_53
- Track 31 : Turab_46
- Track 32 : MissSwiss_50
- Track 33 : Peregrin_211
- Track 34 : Weasels2_220
- Track 35 : Grayson_216
- Track 36 : DunneganBoMo_27, KSunshine22_318, KSunshine22_26, WaddleDee_25, WaddleDee_327, DunneganBoMo_330

- Track 37 : Rockabye_34, Rockabye_333
- Track 38 : Chilliams_31, Chilliams_322
- Track 39 : ReginaGlobina_27, ReginaGlobina_338
- Track 40 : EniyanLRS_145, Wildcat_152, MaryV_138, Azrael100_145, Cosmo_153
- Track 41 : Kumao_111
- Track 42 : Wollypog_31

Summary of Final Annotations (See graph section above for start numbers):

The start number called the most often in the published annotations is 19, it was called in 23 of the 51 non-draft genes in the pham.

Genes that call this "Most Annotated" start:

- AGrandiflora_51, Adolin_51, Ascela_48, Berrie_50, DrManhattan_50, DrSierra_47, DunneganBoMo_27, DunneganBoMo_330, Iter_48, IttyBittyPiggy_48, Joemato_49, JohnDoe_49, KSunshine22_26, KSunshine22_318, Kaylissa_50, KeAlii_46, Lego_48, Lizalica_48, Mudpuppy_45, Nitro_48, Powerpuff_51, Reedo_48, ReginaGlobina_27, ReginaGlobina_338, Simpson_51, Tbone_49, Tutumahutu_50, VResidence_49, WaddleDee_25, WaddleDee_327, Warda_49, Wildwest_48, Wollypog_31, YesChef_49,

Genes that have the "Most Annotated" start but do not call it:

- Chilliams_31, Chilliams_322,

Genes that do not have the "Most Annotated" start:

- AEgle_45, Adumb2043_46, Amyev_50, Asa16_46, Azrael100_145, Bachome_88, Blinn1_91, Community_52, Cosmo_153, Cyan_49, Elezi_46, EniyanLRS_145, Eraser_46, Grayson_216, Janeemi_51, Jstan_48, Kalpine_90, Kumao_111, London_46, MaryV_138, MissSwiss_50, MissWhite_81, Niobe_46, Peregrin_211, Phives_53, Pixelle_51, Rockabye_333, Rockabye_34, Tallboi_48, Tian_49, Trixie_87, Tuck_52, Turab_46, Weasels2_220, Wildcat_152,

Summary by start number:

Start 11:

- Found in 3 of 71 (4.2%) of genes in pham
- No Manual Annotations of this start.
- Called 66.7% of time when present
- Phage (with cluster) where this start called: Chilliams_31 (FC), Chilliams_322 (FC),

Start 13:

- Found in 5 of 71 (7.0%) of genes in pham
- Manual Annotations of this start: 2 of 51
- Called 40.0% of time when present
- Phage (with cluster) where this start called: Blinn1_91 (A6), MissWhite_81 (A2),

Start 16:

- Found in 1 of 71 (1.4%) of genes in pham
- Manual Annotations of this start: 1 of 51
- Called 100.0% of time when present

- Phage (with cluster) where this start called: Kumao_111 (singleton),

Start 17:

- Found in 2 of 71 (2.8%) of genes in pham
- Manual Annotations of this start: 1 of 51
- Called 50.0% of time when present
- Phage (with cluster) where this start called: Bachome_88 (A11),

Start 18:

- Found in 8 of 71 (11.3%) of genes in pham
- Manual Annotations of this start: 7 of 51
- Called 87.5% of time when present
- Phage (with cluster) where this start called: Azrael100_145 (V), Cosmo_153 (V), EniyanLRS_145 (V), Kalpine_90 (A2), MaryV_138 (V), Trixie_87 (A2), Wildcat_152 (V),

Start 19:

- Found in 36 of 71 (50.7%) of genes in pham
- Manual Annotations of this start: 23 of 51
- Called 94.4% of time when present
- Phage (with cluster) where this start called: AGrandiflora_51 (AZ1), Adolin_51 (AZ1), Ascela_48 (AZ1), Berrie_50 (AZ1), DrManhattan_50 (AZ1), DrSierra_47 (AZ1), DunneganBoMo_27 (FC), DunneganBoMo_330 (FC), Iter_48 (AZ1), IttyBittyPiggy_48 (AZ1), Joemato_49 (AZ1), JohnDoe_49 (AZ1), KSunshine22_26 (FC), KSunshine22_318 (FC), Kaylissa_50 (AZ1), KeAlii_46 (AZ1), Lego_48 (AZ1), Lizalica_48 (AZ1), Mudpuppy_45 (AZ1), Nitro_48 (AZ1), Powerpuff_51 (AZ1), Reedo_48 (AZ1), ReginaGlobina_27 (FC), ReginaGlobina_338 (FC), Simpson_51 (AZ1), Tbone_49 (AZ1), Tutumahutu_50 (AZ1), VResidence_49 (AZ1), WaddleDee_25 (FC), WaddleDee_327 (FC), Warda_49 (AZ1), Wildwest_48 (AZ1), Wollypog_31 (singleton), YesChef_49 (AZ1),

Start 20:

- Found in 2 of 71 (2.8%) of genes in pham
- No Manual Annotations of this start.
- Called 100.0% of time when present
- Phage (with cluster) where this start called: Rockabye_333 (FC), Rockabye_34 (FC),

Start 21:

- Found in 3 of 71 (4.2%) of genes in pham
- Manual Annotations of this start: 3 of 51
- Called 100.0% of time when present
- Phage (with cluster) where this start called: Grayson_216 (CB), Peregrin_211 (CB), Weasels2_220 (CB),

Start 22:

- Found in 3 of 71 (4.2%) of genes in pham
- Manual Annotations of this start: 2 of 51
- Called 100.0% of time when present
- Phage (with cluster) where this start called: AEgle_45 (AZ1), MissSwiss_50 (AZ1), Tallboi_48 (AZ1),

Start 23:

- Found in 16 of 71 (22.5%) of genes in pham

- Manual Annotations of this start: 12 of 51
- Called 100.0% of time when present
- Phage (with cluster) where this start called: Adumb2043_46 (AZ1), Amyev_50 (AZ1), Asa16_46 (AZ1), Community_52 (AZ1), Cyan_49 (AZ1), Elezi_46 (AZ1), Eraser_46 (AZ1), Janeemi_51 (AZ1), Jstan_48 (AZ1), London_46 (AZ1), Niobe_46 (AZ1), Phives_53 (AZ1), Pixelle_51 (AZ1), Tian_49 (AZ1), Tuck_52 (AZ1), Turab_46 (AZ1),

Summary by clusters:

There are 8 clusters represented in this pham: singleton, A11, CB, A6, FC, V, AZ1, A2,

Info for manual annotations of cluster A11:

- Start number 17 was manually annotated 1 time for cluster A11.

Info for manual annotations of cluster A2:

- Start number 13 was manually annotated 1 time for cluster A2.
- Start number 18 was manually annotated 2 times for cluster A2.

Info for manual annotations of cluster A6:

- Start number 13 was manually annotated 1 time for cluster A6.

Info for manual annotations of cluster AZ1:

- Start number 19 was manually annotated 22 times for cluster AZ1.
- Start number 22 was manually annotated 2 times for cluster AZ1.
- Start number 23 was manually annotated 12 times for cluster AZ1.

Info for manual annotations of cluster CB:

- Start number 21 was manually annotated 3 times for cluster CB.

Info for manual annotations of cluster V:

- Start number 18 was manually annotated 5 times for cluster V.

Gene Information:

Gene: AEgle_45 Start: 33909, Stop: 34211, Start Num: 22

Candidate Starts for AEgle_45:

(Start: 22 @33909 has 2 MA's),

Gene: AGrandiflora_51 Start: 35186, Stop: 35530, Start Num: 19

Candidate Starts for AGrandiflora_51:

(Start: 19 @35186 has 23 MA's), (32, 35372), (40, 35480),

Gene: Adolin_51 Start: 33940, Stop: 34284, Start Num: 19

Candidate Starts for Adolin_51:

(Start: 19 @33940 has 23 MA's), (32, 34126), (40, 34234),

Gene: Adumb2043_46 Start: 33931, Stop: 34233, Start Num: 23

Candidate Starts for Adumb2043_46:

(Start: 23 @33931 has 12 MA's),

Gene: Amyev_50 Start: 37254, Stop: 37556, Start Num: 23
Candidate Starts for Amyev_50:
(Start: 23 @37254 has 12 MA's),

Gene: Asa16_46 Start: 35253, Stop: 35555, Start Num: 23
Candidate Starts for Asa16_46:
(Start: 23 @35253 has 12 MA's),

Gene: Ascela_48 Start: 34498, Stop: 34842, Start Num: 19
Candidate Starts for Ascela_48:
(Start: 19 @34498 has 23 MA's), (32, 34684),

Gene: Azrael100_145 Start: 69859, Stop: 69524, Start Num: 18
Candidate Starts for Azrael100_145:
(Start: 18 @69859 has 7 MA's), (25, 69778), (29, 69721), (31, 69685), (35, 69628), (39, 69586), (40, 69568),

Gene: Bachome_88 Start: 47603, Stop: 47259, Start Num: 17
Candidate Starts for Bachome_88:
(Start: 13 @47627 has 2 MA's), (Start: 17 @47603 has 1 MA's), (25, 47519), (31, 47420), (32, 47399), (35, 47363), (39, 47321),

Gene: Berrie_50 Start: 35600, Stop: 35944, Start Num: 19
Candidate Starts for Berrie_50:
(Start: 19 @35600 has 23 MA's), (32, 35786), (40, 35894),

Gene: Blinn1_91 Start: 47767, Stop: 47411, Start Num: 13
Candidate Starts for Blinn1_91:
(Start: 13 @47767 has 2 MA's), (Start: 18 @47743 has 7 MA's), (31, 47575), (39, 47473),

Gene: Chilliams_31 Start: 14259, Stop: 14663, Start Num: 11
Candidate Starts for Chilliams_31:
(11, 14259), (14, 14280), (Start: 19 @14304 has 23 MA's), (28, 14415), (31, 14454), (36, 14535),

Gene: Chilliams_322 Start: 186993, Stop: 187397, Start Num: 11
Candidate Starts for Chilliams_322:
(11, 186993), (14, 187014), (Start: 19 @187038 has 23 MA's), (28, 187149), (31, 187188), (36, 187269),

Gene: Community_52 Start: 36974, Stop: 37276, Start Num: 23
Candidate Starts for Community_52:
(15, 36938), (Start: 23 @36974 has 12 MA's), (40, 37226),

Gene: Cosmo_153 Start: 70023, Stop: 69688, Start Num: 18
Candidate Starts for Cosmo_153:
(Start: 18 @70023 has 7 MA's), (25, 69942), (29, 69885), (31, 69849), (35, 69792), (39, 69750), (40, 69732),

Gene: Cyan_49 Start: 34784, Stop: 35086, Start Num: 23
Candidate Starts for Cyan_49:
(Start: 23 @34784 has 12 MA's), (32, 34928), (40, 35036),

Gene: DrManhattan_50 Start: 33507, Stop: 33851, Start Num: 19
Candidate Starts for DrManhattan_50:
(Start: 19 @33507 has 23 MA's), (32, 33693), (40, 33801),

Gene: DrSierra_47 Start: 33655, Stop: 33999, Start Num: 19
Candidate Starts for DrSierra_47:
(Start: 19 @33655 has 23 MA's), (31, 33820), (32, 33841), (40, 33949),

Gene: DunneganBoMo_27 Start: 10807, Stop: 11118, Start Num: 19
Candidate Starts for DunneganBoMo_27:
(Start: 19 @10807 has 23 MA's),

Gene: DunneganBoMo_330 Start: 190219, Stop: 190530, Start Num: 19
Candidate Starts for DunneganBoMo_330:
(Start: 19 @190219 has 23 MA's),

Gene: Elezi_46 Start: 35250, Stop: 35552, Start Num: 23
Candidate Starts for Elezi_46:
(Start: 23 @35250 has 12 MA's),

Gene: EniyanLRS_145 Start: 70352, Stop: 70017, Start Num: 18
Candidate Starts for EniyanLRS_145:
(Start: 18 @70352 has 7 MA's), (25, 70271), (29, 70214), (31, 70178), (35, 70121), (39, 70079), (40, 70061),

Gene: Eraser_46 Start: 35260, Stop: 35562, Start Num: 23
Candidate Starts for Eraser_46:
(Start: 23 @35260 has 12 MA's),

Gene: Grayson_216 Start: 107820, Stop: 108131, Start Num: 21
Candidate Starts for Grayson_216:
(10, 107748), (12, 107763), (Start: 21 @107820 has 3 MA's), (26, 107901), (34, 108009), (37, 108042),

Gene: Iter_48 Start: 34492, Stop: 34836, Start Num: 19
Candidate Starts for Iter_48:
(Start: 19 @34492 has 23 MA's), (32, 34678),

Gene: IttyBittyPiggy_48 Start: 34220, Stop: 34564, Start Num: 19
Candidate Starts for IttyBittyPiggy_48:
(7, 33926), (Start: 19 @34220 has 23 MA's), (40, 34514),

Gene: Janeemi_51 Start: 36499, Stop: 36801, Start Num: 23
Candidate Starts for Janeemi_51:
(Start: 23 @36499 has 12 MA's), (40, 36751),

Gene: Joemato_49 Start: 34811, Stop: 35155, Start Num: 19
Candidate Starts for Joemato_49:
(Start: 19 @34811 has 23 MA's), (32, 34997), (40, 35105),

Gene: JohnDoe_49 Start: 34807, Stop: 35151, Start Num: 19
Candidate Starts for JohnDoe_49:
(Start: 19 @34807 has 23 MA's), (32, 34993), (40, 35101),

Gene: Jstan_48 Start: 35255, Stop: 35557, Start Num: 23
Candidate Starts for Jstan_48:
(Start: 23 @35255 has 12 MA's),

Gene: KSunshine22_318 Start: 188079, Stop: 188390, Start Num: 19
Candidate Starts for KSunshine22_318:
(Start: 19 @188079 has 23 MA's),

Gene: KSunshine22_26 Start: 11178, Stop: 11489, Start Num: 19
Candidate Starts for KSunshine22_26:
(Start: 19 @11178 has 23 MA's),

Gene: Kalpine_90 Start: 49691, Stop: 49359, Start Num: 18
Candidate Starts for Kalpine_90:
(9, 49868), (Start: 13 @49715 has 2 MA's), (Start: 18 @49691 has 7 MA's), (31, 49523), (39, 49421),

Gene: Kaylissa_50 Start: 35202, Stop: 35546, Start Num: 19
Candidate Starts for Kaylissa_50:
(Start: 19 @35202 has 23 MA's), (32, 35388), (40, 35496),

Gene: KeAlii_46 Start: 34316, Stop: 34660, Start Num: 19
Candidate Starts for KeAlii_46:
(Start: 19 @34316 has 23 MA's), (32, 34502),

Gene: Kumao_111 Start: 66431, Stop: 66087, Start Num: 16
Candidate Starts for Kumao_111:
(Start: 16 @66431 has 1 MA's), (25, 66347), (31, 66248), (32, 66227), (35, 66191), (39, 66149),

Gene: Lego_48 Start: 34521, Stop: 34865, Start Num: 19
Candidate Starts for Lego_48:
(Start: 19 @34521 has 23 MA's), (32, 34707),

Gene: Lizalica_48 Start: 34265, Stop: 34609, Start Num: 19
Candidate Starts for Lizalica_48:
(1, 33359), (2, 33488), (3, 33608), (5, 33821), (6, 33863), (Start: 19 @34265 has 23 MA's), (32, 34451),
(40, 34559),

Gene: London_46 Start: 35251, Stop: 35553, Start Num: 23
Candidate Starts for London_46:
(Start: 23 @35251 has 12 MA's),

Gene: MaryV_138 Start: 68201, Stop: 67863, Start Num: 18
Candidate Starts for MaryV_138:
(Start: 18 @68201 has 7 MA's), (25, 68120), (29, 68060), (31, 68024), (35, 67967), (39, 67925), (40,
67907),

Gene: MissSwiss_50 Start: 33782, Stop: 34084, Start Num: 22
Candidate Starts for MissSwiss_50:
(Start: 22 @33782 has 2 MA's),

Gene: MissWhite_81 Start: 45575, Stop: 45207, Start Num: 13
Candidate Starts for MissWhite_81:

(Start: 13 @45575 has 2 MA's), (Start: 17 @45551 has 1 MA's), (25, 45467), (31, 45368), (32, 45347), (35, 45311), (39, 45269),

Gene: Mudpuppy_45 Start: 34463, Stop: 34807, Start Num: 19
Candidate Starts for Mudpuppy_45:
(Start: 19 @34463 has 23 MA's), (32, 34649),

Gene: Niobe_46 Start: 35254, Stop: 35556, Start Num: 23
Candidate Starts for Niobe_46:
(Start: 23 @35254 has 12 MA's),

Gene: Nitro_48 Start: 35561, Stop: 35905, Start Num: 19
Candidate Starts for Nitro_48:
(Start: 19 @35561 has 23 MA's), (32, 35747),

Gene: Peregrin_211 Start: 108093, Stop: 108404, Start Num: 21
Candidate Starts for Peregrin_211:
(10, 108021), (12, 108036), (Start: 21 @108093 has 3 MA's), (26, 108174), (37, 108315),

Gene: Phives_53 Start: 36999, Stop: 37301, Start Num: 23
Candidate Starts for Phives_53:
(15, 36963), (Start: 23 @36999 has 12 MA's), (40, 37251),

Gene: Pixelle_51 Start: 37599, Stop: 37901, Start Num: 23
Candidate Starts for Pixelle_51:
(5, 37155), (6, 37197), (Start: 23 @37599 has 12 MA's),

Gene: Powerpuff_51 Start: 35909, Stop: 36253, Start Num: 19
Candidate Starts for Powerpuff_51:
(Start: 19 @35909 has 23 MA's), (32, 36095),

Gene: Reedo_48 Start: 33265, Stop: 33609, Start Num: 19
Candidate Starts for Reedo_48:
(4, 32752), (8, 32995), (11, 33220), (Start: 19 @33265 has 23 MA's), (32, 33451),

Gene: ReginaGlobina_27 Start: 12135, Stop: 12446, Start Num: 19
Candidate Starts for ReginaGlobina_27:
(Start: 19 @12135 has 23 MA's),

Gene: ReginaGlobina_338 Start: 189582, Stop: 189893, Start Num: 19
Candidate Starts for ReginaGlobina_338:
(Start: 19 @189582 has 23 MA's),

Gene: Rockabye_34 Start: 14936, Stop: 15229, Start Num: 20
Candidate Starts for Rockabye_34:
(20, 14936), (24, 14990), (41, 15221),

Gene: Rockabye_333 Start: 187549, Stop: 187842, Start Num: 20
Candidate Starts for Rockabye_333:
(20, 187549), (24, 187603), (41, 187834),

Gene: Simpson_51 Start: 34815, Stop: 35159, Start Num: 19
Candidate Starts for Simpson_51:

(Start: 19 @34815 has 23 MA's), (32, 35001), (40, 35109),

Gene: Tallboi_48 Start: 35843, Stop: 36145, Start Num: 22

Candidate Starts for Tallboi_48:

(Start: 22 @35843 has 2 MA's),

Gene: Tbone_49 Start: 35369, Stop: 35713, Start Num: 19

Candidate Starts for Tbone_49:

(Start: 19 @35369 has 23 MA's), (32, 35555),

Gene: Tian_49 Start: 37254, Stop: 37556, Start Num: 23

Candidate Starts for Tian_49:

(Start: 23 @37254 has 12 MA's),

Gene: Trixie_87 Start: 49773, Stop: 49441, Start Num: 18

Candidate Starts for Trixie_87:

(9, 49950), (Start: 13 @49797 has 2 MA's), (Start: 18 @49773 has 7 MA's), (31, 49605), (39, 49503),

Gene: Tuck_52 Start: 36882, Stop: 37184, Start Num: 23

Candidate Starts for Tuck_52:

(15, 36846), (Start: 23 @36882 has 12 MA's), (40, 37134),

Gene: Turab_46 Start: 33951, Stop: 34253, Start Num: 23

Candidate Starts for Turab_46:

(Start: 23 @33951 has 12 MA's),

Gene: Tutumahutu_50 Start: 34792, Stop: 35136, Start Num: 19

Candidate Starts for Tutumahutu_50:

(Start: 19 @34792 has 23 MA's), (32, 34978),

Gene: VResidence_49 Start: 34157, Stop: 34501, Start Num: 19

Candidate Starts for VResidence_49:

(Start: 19 @34157 has 23 MA's), (32, 34343),

Gene: WaddleDee_25 Start: 10553, Stop: 10864, Start Num: 19

Candidate Starts for WaddleDee_25:

(Start: 19 @10553 has 23 MA's),

Gene: WaddleDee_327 Start: 188748, Stop: 189059, Start Num: 19

Candidate Starts for WaddleDee_327:

(Start: 19 @188748 has 23 MA's),

Gene: Warda_49 Start: 34856, Stop: 35200, Start Num: 19

Candidate Starts for Warda_49:

(Start: 19 @34856 has 23 MA's),

Gene: Weasels2_220 Start: 111258, Stop: 111569, Start Num: 21

Candidate Starts for Weasels2_220:

(Start: 21 @111258 has 3 MA's), (26, 111339), (27, 111354), (30, 111375), (33, 111444), (34, 111447), (37, 111480), (38, 111492),

Gene: Wildcat_152 Start: 70094, Stop: 69756, Start Num: 18

Candidate Starts for Wildcat_152:

(Start: 18 @70094 has 7 MA's), (25, 70013), (29, 69953), (31, 69917), (35, 69860), (39, 69818), (40, 69800),

Gene: Wildwest_48 Start: 34842, Stop: 35186, Start Num: 19

Candidate Starts for Wildwest_48:

(Start: 19 @34842 has 23 MA's), (32, 35028), (40, 35136),

Gene: Wollypog_31 Start: 26104, Stop: 26463, Start Num: 19

Candidate Starts for Wollypog_31:

(Start: 19 @26104 has 23 MA's), (26, 26185), (31, 26254), (36, 26335),

Gene: YesChef_49 Start: 34768, Stop: 35112, Start Num: 19

Candidate Starts for YesChef_49:

(Start: 19 @34768 has 23 MA's), (32, 34954),