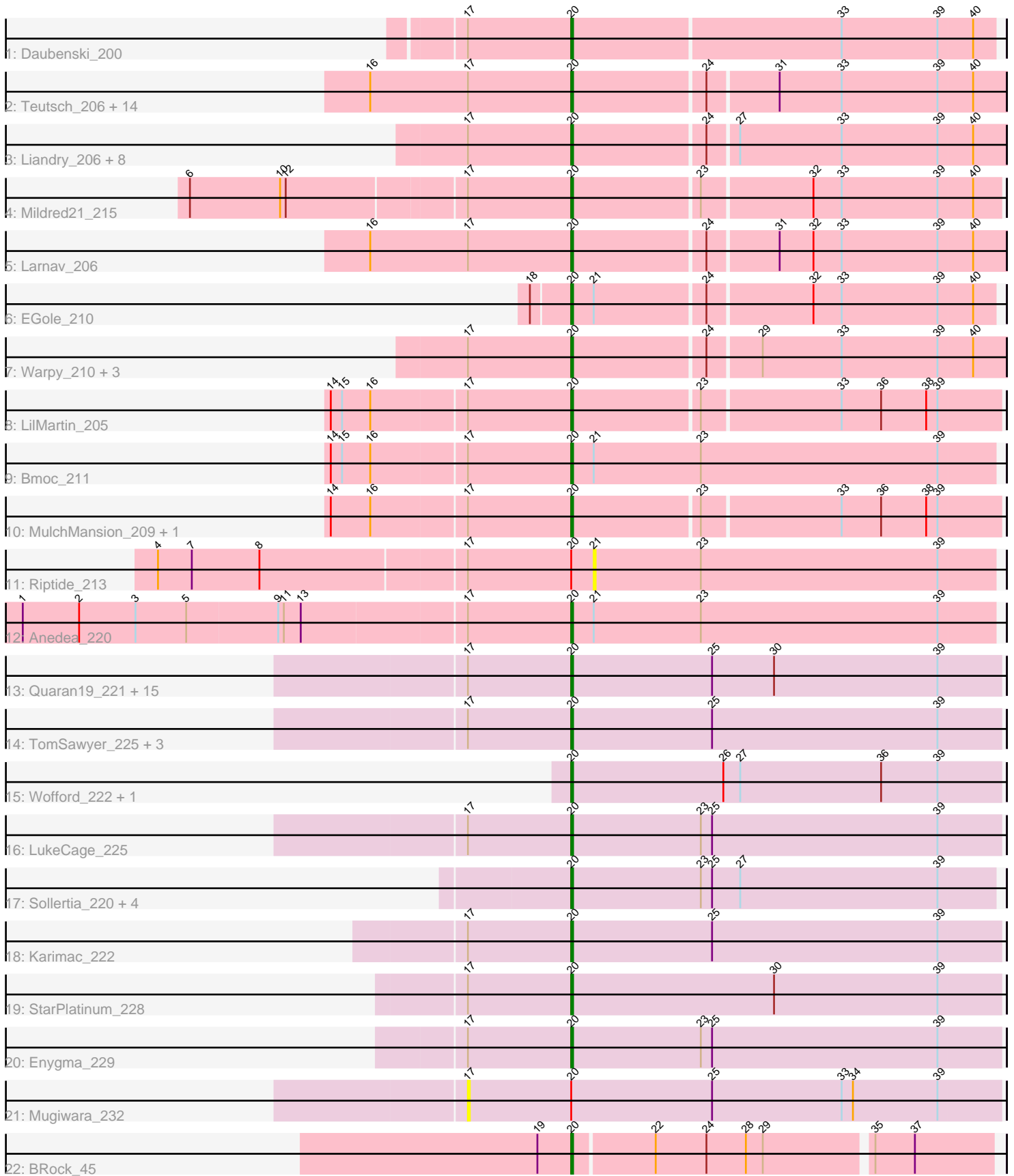


Pham 202911



Note: Tracks are now grouped by subcluster and scaled. Switching in subcluster is indicated by changes in track color. Track scale is now set by default to display the region 30 bp upstream of start 1 to 30 bp downstream of the last possible start. If this default region is judged to be packed too tightly with annotated starts, the track will be further scaled to only show that region of the ORF with annotated starts. This action will be indicated by adding "Zoomed" to the title. For starts, yellow indicates the location of called starts comprised solely of Glimmer/GeneMark auto-annotations, green indicates the location of called starts with at least 1 manual gene annotation.

Pham 202911 Report

This analysis was run 01/18/25 on database version 583.

Pham number 202911 has 71 members, 6 are drafts.

Phages represented in each track:

- Track 1 : Daubenski_200
- Track 2 : Teutsch_206, Samisti12_210, Lululemon_203, Pepperwood_206, Scheme_209, Cross_205, PacManQ_203, Leo04_208, BlueOtter_204, Tribute_204, HangryHippo_204, Peebs_204, Watermoore_205, Sushi23_206, Cursive_208
- Track 3 : Liandry_206, Navo_201, Braelyn_204, NootNoot_203, PinkiePie_206, WhereRU_206, Persimmon_209, Squillium_209, Bartholomune_207
- Track 4 : Mildred21_215
- Track 5 : Larnav_206
- Track 6 : EGole_210
- Track 7 : Warpy_210, Evy_199, Jay2Jay_212, Targaryen_206
- Track 8 : LilMartin_205
- Track 9 : Bmoc_211
- Track 10 : MulchMansion_209, Angela_208
- Track 11 : Riptide_213
- Track 12 : Anedea_220
- Track 13 : Quarant19_221, Starbow_218, Birchlyn_220, JimJam_228, SaltySpittoon_221, Jollison_218, Gibbi_229, CeilingFan_233, Spelly_226, Rikishi_229, Amabiko_225, Spilled_228, PumpkinSpice_224, MindFlayer_214, KentuckyRacer_227, IchabodCrane_216
- Track 14 : TomSawyer_225, Battuta_219, Bordeaux_219, Wipeout_212
- Track 15 : Wofford_222, Elmer_231
- Track 16 : LukeCage_225
- Track 17 : Sollertia_220, Genie2_218, BoomerJR_218, Stanimal_219, Yaboi_224
- Track 18 : Karimac_222
- Track 19 : StarPlatinum_228
- Track 20 : Enygma_229
- Track 21 : Mugiwara_232
- Track 22 : BRock_45

Summary of Final Annotations (See graph section above for start numbers):

The start number called the most often in the published annotations is 20, it was called in 65 of the 65 non-draft genes in the pham.

Genes that call this "Most Annotated" start:

- Amabiko_225, Anedea_220, Angela_208, BRock_45, Bartholomune_207, Battuta_219, Birchlyn_220, BlueOtter_204, Bmoc_211, BoomerJR_218, Bordeaux_219, Braelyn_204, CeilingFan_233, Cross_205, Cursive_208, Daubenski_200, EGole_210, Elmer_231, Enygma_229, Evy_199, Genie2_218, Gibbi_229, HangryHippo_204, IchabodCrane_216, Jay2Jay_212, JimJam_228, Jollison_218, Karimac_222, KentuckyRacer_227, Larnav_206, Leo04_208, Liandry_206, LilMartin_205, LukeCage_225, Lululemon_203, Mildred21_215, MindFlayer_214, MulchMansion_209, Navo_201, NootNoot_203, PacManQ_203, Peebs_204, Pepperwood_206, Persimmon_209, PinkiePie_206, PumpkinSpice_224, Quaran19_221, Rikishi_229, SaltySpittoon_221, Samisti12_210, Scheme_209, Sollertia_220, Spelly_226, Spilled_228, Squillium_209, Stanimal_219, StarPlatinum_228, Starbow_218, Sushi23_206, Targaryen_206, Teutsch_206, TomSawyer_225, Tribute_204, Warpy_210, Watermoore_205, WhereRU_206, Wipeout_212, Wofford_222, Yaboi_224,

Genes that have the "Most Annotated" start but do not call it:

- Mugiwara_232, Riptide_213,

Genes that do not have the "Most Annotated" start:

-

Summary by start number:

Start 17:

- Found in 62 of 71 (87.3%) of genes in pham
- No Manual Annotations of this start.
- Called 1.6% of time when present
- Phage (with cluster) where this start called: Mugiwara_232 (BE2),

Start 20:

- Found in 71 of 71 (100.0%) of genes in pham
- Manual Annotations of this start: 65 of 65
- Called 97.2% of time when present
- Phage (with cluster) where this start called: Amabiko_225 (BE2), Anedea_220 (BE1), Angela_208 (BE1), BRock_45 (BS), Bartholomune_207 (BE1), Battuta_219 (BE2), Birchlyn_220 (BE2), BlueOtter_204 (BE1), Bmoc_211 (BE1), BoomerJR_218 (BE2), Bordeaux_219 (BE2), Braelyn_204 (BE1), CeilingFan_233 (BE2), Cross_205 (BE1), Cursive_208 (BE1), Daubenski_200 (BE1), EGole_210 (BE1), Elmer_231 (BE2), Enygma_229 (BE2), Evy_199 (BE1), Genie2_218 (BE2), Gibbi_229 (BE2), HangryHippo_204 (BE1), IchabodCrane_216 (BE2), Jay2Jay_212 (BE1), JimJam_228 (BE2), Jollison_218 (BE2), Karimac_222 (BE2), KentuckyRacer_227 (BE2), Larnav_206 (BE1), Leo04_208 (BE1), Liandry_206 (BE1), LilMartin_205 (BE1), LukeCage_225 (BE2), Lululemon_203 (BE1), Mildred21_215 (BE1), MindFlayer_214 (BE2), MulchMansion_209 (BE1), Navo_201 (BE1), NootNoot_203 (BE1), PacManQ_203 (BE1), Peebs_204 (BE1), Pepperwood_206 (BE1), Persimmon_209 (BE1), PinkiePie_206 (BE1), PumpkinSpice_224 (BE2), Quaran19_221 (BE2), Rikishi_229 (BE2), SaltySpittoon_221 (BE2), Samisti12_210 (BE1), Scheme_209 (BE1), Sollertia_220 (BE2), Spelly_226 (BE2), Spilled_228 (BE2), Squillium_209 (BE1), Stanimal_219 (BE2), StarPlatinum_228 (BE2), Starbow_218 (BE2), Sushi23_206 (BE1), Targaryen_206 (BE1), Teutsch_206 (BE1), TomSawyer_225 (BE2), Tribute_204 (BE1), Warpy_210 (BE1), Watermoore_205 (BE1), WhereRU_206 (BE1), Wipeout_212 (BE2), Wofford_222 (BE2), Yaboi_224

(BE2),

Start 21:

- Found in 4 of 71 (5.6%) of genes in pham
- No Manual Annotations of this start.
- Called 25.0% of time when present
- Phage (with cluster) where this start called: Riptide_213 (BE1),

Summary by clusters:

There are 3 clusters represented in this pham: BE2, BE1, BS,

Info for manual annotations of cluster BE1:

- Start number 20 was manually annotated 36 times for cluster BE1.

Info for manual annotations of cluster BE2:

- Start number 20 was manually annotated 28 times for cluster BE2.

Info for manual annotations of cluster BS:

- Start number 20 was manually annotated 1 time for cluster BS.

Gene Information:

Gene: Amabiko_225 Start: 106725, Stop: 106952, Start Num: 20

Candidate Starts for Amabiko_225:

(17, 106671), (Start: 20 @106725 has 65 MA's), (25, 106800), (30, 106833), (39, 106920),

Gene: Anedea_220 Start: 107420, Stop: 107644, Start Num: 20

Candidate Starts for Anedea_220:

(1, 107135), (2, 107165), (3, 107195), (5, 107222), (9, 107270), (11, 107273), (13, 107282), (17, 107366), (Start: 20 @107420 has 65 MA's), (21, 107432), (23, 107489), (39, 107615),

Gene: Angela_208 Start: 104813, Stop: 105034, Start Num: 20

Candidate Starts for Angela_208:

(14, 104690), (16, 104711), (17, 104759), (Start: 20 @104813 has 65 MA's), (23, 104879), (33, 104951), (36, 104972), (38, 104996), (39, 105002),

Gene: BRock_45 Start: 15607, Stop: 15822, Start Num: 20

Candidate Starts for BRock_45:

(19, 15589), (Start: 20 @15607 has 65 MA's), (22, 15649), (24, 15676), (28, 15697), (29, 15706), (35, 15760), (37, 15781),

Gene: Bartholomune_207 Start: 104979, Stop: 105203, Start Num: 20

Candidate Starts for Bartholomune_207:

(17, 104925), (Start: 20 @104979 has 65 MA's), (24, 105048), (27, 105063), (33, 105117), (39, 105168), (40, 105186),

Gene: Battuta_219 Start: 106041, Stop: 106268, Start Num: 20

Candidate Starts for Battuta_219:

(17, 105987), (Start: 20 @106041 has 65 MA's), (25, 106116), (39, 106236),

Gene: Birchlyn_220 Start: 103973, Stop: 104200, Start Num: 20

Candidate Starts for Birchlyn_220:

(17, 103919), (Start: 20 @103973 has 65 MA's), (25, 104048), (30, 104081), (39, 104168),

Gene: BlueOtter_204 Start: 105192, Stop: 105416, Start Num: 20

Candidate Starts for BlueOtter_204:

(16, 105087), (17, 105138), (Start: 20 @105192 has 65 MA's), (24, 105261), (31, 105297), (33, 105330), (39, 105381), (40, 105399),

Gene: Bmoc_211 Start: 105620, Stop: 105844, Start Num: 20

Candidate Starts for Bmoc_211:

(14, 105497), (15, 105503), (16, 105518), (17, 105566), (Start: 20 @105620 has 65 MA's), (21, 105632), (23, 105689), (39, 105815),

Gene: BoomerJR_218 Start: 106815, Stop: 107039, Start Num: 20

Candidate Starts for BoomerJR_218:

(Start: 20 @106815 has 65 MA's), (23, 106884), (25, 106890), (27, 106905), (39, 107010),

Gene: Bordeaux_219 Start: 106624, Stop: 106851, Start Num: 20

Candidate Starts for Bordeaux_219:

(17, 106570), (Start: 20 @106624 has 65 MA's), (25, 106699), (39, 106819),

Gene: Braelyn_204 Start: 104626, Stop: 104850, Start Num: 20

Candidate Starts for Braelyn_204:

(17, 104572), (Start: 20 @104626 has 65 MA's), (24, 104695), (27, 104710), (33, 104764), (39, 104815), (40, 104833),

Gene: CeilingFan_233 Start: 107418, Stop: 107645, Start Num: 20

Candidate Starts for CeilingFan_233:

(17, 107364), (Start: 20 @107418 has 65 MA's), (25, 107493), (30, 107526), (39, 107613),

Gene: Cross_205 Start: 105837, Stop: 106061, Start Num: 20

Candidate Starts for Cross_205:

(16, 105732), (17, 105783), (Start: 20 @105837 has 65 MA's), (24, 105906), (31, 105942), (33, 105975), (39, 106026), (40, 106044),

Gene: Cursive_208 Start: 105521, Stop: 105745, Start Num: 20

Candidate Starts for Cursive_208:

(16, 105416), (17, 105467), (Start: 20 @105521 has 65 MA's), (24, 105590), (31, 105626), (33, 105659), (39, 105710), (40, 105728),

Gene: Daubenski_200 Start: 106207, Stop: 106428, Start Num: 20

Candidate Starts for Daubenski_200:

(17, 106153), (Start: 20 @106207 has 65 MA's), (33, 106348), (39, 106399), (40, 106417),

Gene: EGole_210 Start: 107815, Stop: 108033, Start Num: 20

Candidate Starts for EGole_210:

(18, 107797), (Start: 20 @107815 has 65 MA's), (21, 107827), (24, 107884), (32, 107938), (33, 107953), (39, 108004), (40, 108022),

Gene: Elmer_231 Start: 110367, Stop: 110594, Start Num: 20

Candidate Starts for Elmer_231:

(Start: 20 @110367 has 65 MA's), (26, 110448), (27, 110457), (36, 110532), (39, 110562),

Gene: Enygma_229 Start: 109827, Stop: 110054, Start Num: 20

Candidate Starts for Enygma_229:

(17, 109773), (Start: 20 @109827 has 65 MA's), (23, 109896), (25, 109902), (39, 110022),

Gene: Evy_199 Start: 106304, Stop: 106528, Start Num: 20

Candidate Starts for Evy_199:

(17, 106250), (Start: 20 @106304 has 65 MA's), (24, 106373), (29, 106400), (33, 106442), (39, 106493), (40, 106511),

Gene: Genie2_218 Start: 106940, Stop: 107164, Start Num: 20

Candidate Starts for Genie2_218:

(Start: 20 @106940 has 65 MA's), (23, 107009), (25, 107015), (27, 107030), (39, 107135),

Gene: Gibbi_229 Start: 106911, Stop: 107138, Start Num: 20

Candidate Starts for Gibbi_229:

(17, 106857), (Start: 20 @106911 has 65 MA's), (25, 106986), (30, 107019), (39, 107106),

Gene: HangryHippo_204 Start: 105192, Stop: 105416, Start Num: 20

Candidate Starts for HangryHippo_204:

(16, 105087), (17, 105138), (Start: 20 @105192 has 65 MA's), (24, 105261), (31, 105297), (33, 105330), (39, 105381), (40, 105399),

Gene: IchabodCrane_216 Start: 106426, Stop: 106653, Start Num: 20

Candidate Starts for IchabodCrane_216:

(17, 106372), (Start: 20 @106426 has 65 MA's), (25, 106501), (30, 106534), (39, 106621),

Gene: Jay2Jay_212 Start: 106459, Stop: 106683, Start Num: 20

Candidate Starts for Jay2Jay_212:

(17, 106405), (Start: 20 @106459 has 65 MA's), (24, 106528), (29, 106555), (33, 106597), (39, 106648), (40, 106666),

Gene: JimJam_228 Start: 108347, Stop: 108574, Start Num: 20

Candidate Starts for JimJam_228:

(17, 108293), (Start: 20 @108347 has 65 MA's), (25, 108422), (30, 108455), (39, 108542),

Gene: Jollison_218 Start: 106557, Stop: 106784, Start Num: 20

Candidate Starts for Jollison_218:

(17, 106503), (Start: 20 @106557 has 65 MA's), (25, 106632), (30, 106665), (39, 106752),

Gene: Karimac_222 Start: 106742, Stop: 106969, Start Num: 20

Candidate Starts for Karimac_222:

(17, 106688), (Start: 20 @106742 has 65 MA's), (25, 106817), (39, 106937),

Gene: KentuckyRacer_227 Start: 108262, Stop: 108489, Start Num: 20

Candidate Starts for KentuckyRacer_227:

(17, 108208), (Start: 20 @108262 has 65 MA's), (25, 108337), (30, 108370), (39, 108457),

Gene: Larnav_206 Start: 105931, Stop: 106155, Start Num: 20

Candidate Starts for Larnav_206:

(16, 105826), (17, 105877), (Start: 20 @105931 has 65 MA's), (24, 106000), (31, 106036), (32, 106054), (33, 106069), (39, 106120), (40, 106138),

Gene: Leo04_208 Start: 106496, Stop: 106720, Start Num: 20

Candidate Starts for Leo04_208:

(16, 106391), (17, 106442), (Start: 20 @106496 has 65 MA's), (24, 106565), (31, 106601), (33, 106634), (39, 106685), (40, 106703),

Gene: Liandry_206 Start: 105298, Stop: 105522, Start Num: 20

Candidate Starts for Liandry_206:

(17, 105244), (Start: 20 @105298 has 65 MA's), (24, 105367), (27, 105382), (33, 105436), (39, 105487), (40, 105505),

Gene: LilMartin_205 Start: 104177, Stop: 104398, Start Num: 20

Candidate Starts for LilMartin_205:

(14, 104054), (15, 104060), (16, 104075), (17, 104123), (Start: 20 @104177 has 65 MA's), (23, 104243), (33, 104315), (36, 104336), (38, 104360), (39, 104366),

Gene: LukeCage_225 Start: 108793, Stop: 109020, Start Num: 20

Candidate Starts for LukeCage_225:

(17, 108739), (Start: 20 @108793 has 65 MA's), (23, 108862), (25, 108868), (39, 108988),

Gene: Lululemon_203 Start: 104573, Stop: 104797, Start Num: 20

Candidate Starts for Lululemon_203:

(16, 104468), (17, 104519), (Start: 20 @104573 has 65 MA's), (24, 104642), (31, 104678), (33, 104711), (39, 104762), (40, 104780),

Gene: Mildred21_215 Start: 103945, Stop: 104166, Start Num: 20

Candidate Starts for Mildred21_215:

(6, 103750), (10, 103798), (12, 103801), (17, 103891), (Start: 20 @103945 has 65 MA's), (23, 104011), (32, 104068), (33, 104083), (39, 104134), (40, 104152),

Gene: MindFlayer_214 Start: 105942, Stop: 106169, Start Num: 20

Candidate Starts for MindFlayer_214:

(17, 105888), (Start: 20 @105942 has 65 MA's), (25, 106017), (30, 106050), (39, 106137),

Gene: Mugiwara_232 Start: 109189, Stop: 109470, Start Num: 17

Candidate Starts for Mugiwara_232:

(17, 109189), (Start: 20 @109243 has 65 MA's), (25, 109318), (33, 109387), (34, 109393), (39, 109438),

Gene: MulchMansion_209 Start: 105811, Stop: 106032, Start Num: 20

Candidate Starts for MulchMansion_209:

(14, 105688), (16, 105709), (17, 105757), (Start: 20 @105811 has 65 MA's), (23, 105877), (33, 105949), (36, 105970), (38, 105994), (39, 106000),

Gene: Navo_201 Start: 103830, Stop: 104054, Start Num: 20

Candidate Starts for Navo_201:

(17, 103776), (Start: 20 @103830 has 65 MA's), (24, 103899), (27, 103914), (33, 103968), (39, 104019), (40, 104037),

Gene: NootNoot_203 Start: 104110, Stop: 104334, Start Num: 20

Candidate Starts for NootNoot_203:

(17, 104056), (Start: 20 @104110 has 65 MA's), (24, 104179), (27, 104194), (33, 104248), (39, 104299), (40, 104317),

Gene: PacManQ_203 Start: 104573, Stop: 104797, Start Num: 20
Candidate Starts for PacManQ_203:
(16, 104468), (17, 104519), (Start: 20 @104573 has 65 MA's), (24, 104642), (31, 104678), (33, 104711), (39, 104762), (40, 104780),

Gene: Peebs_204 Start: 105902, Stop: 106126, Start Num: 20
Candidate Starts for Peebs_204:
(16, 105797), (17, 105848), (Start: 20 @105902 has 65 MA's), (24, 105971), (31, 106007), (33, 106040), (39, 106091), (40, 106109),

Gene: Pepperwood_206 Start: 105859, Stop: 106083, Start Num: 20
Candidate Starts for Pepperwood_206:
(16, 105754), (17, 105805), (Start: 20 @105859 has 65 MA's), (24, 105928), (31, 105964), (33, 105997), (39, 106048), (40, 106066),

Gene: Persimmon_209 Start: 104848, Stop: 105072, Start Num: 20
Candidate Starts for Persimmon_209:
(17, 104794), (Start: 20 @104848 has 65 MA's), (24, 104917), (27, 104932), (33, 104986), (39, 105037), (40, 105055),

Gene: PinkiePie_206 Start: 105298, Stop: 105522, Start Num: 20
Candidate Starts for PinkiePie_206:
(17, 105244), (Start: 20 @105298 has 65 MA's), (24, 105367), (27, 105382), (33, 105436), (39, 105487), (40, 105505),

Gene: PumpkinSpice_224 Start: 107163, Stop: 107390, Start Num: 20
Candidate Starts for PumpkinSpice_224:
(17, 107109), (Start: 20 @107163 has 65 MA's), (25, 107238), (30, 107271), (39, 107358),

Gene: Quaran19_221 Start: 106604, Stop: 106831, Start Num: 20
Candidate Starts for Quaran19_221:
(17, 106550), (Start: 20 @106604 has 65 MA's), (25, 106679), (30, 106712), (39, 106799),

Gene: Rikishi_229 Start: 106885, Stop: 107112, Start Num: 20
Candidate Starts for Rikishi_229:
(17, 106831), (Start: 20 @106885 has 65 MA's), (25, 106960), (30, 106993), (39, 107080),

Gene: Riptide_213 Start: 104962, Stop: 105174, Start Num: 21
Candidate Starts for Riptide_213:
(4, 104737), (7, 104755), (8, 104791), (17, 104896), (Start: 20 @104950 has 65 MA's), (21, 104962), (23, 105019), (39, 105145),

Gene: SaltySpittoon_221 Start: 106146, Stop: 106373, Start Num: 20
Candidate Starts for SaltySpittoon_221:
(17, 106092), (Start: 20 @106146 has 65 MA's), (25, 106221), (30, 106254), (39, 106341),

Gene: Samisti12_210 Start: 107483, Stop: 107707, Start Num: 20
Candidate Starts for Samisti12_210:
(16, 107378), (17, 107429), (Start: 20 @107483 has 65 MA's), (24, 107552), (31, 107588), (33, 107621), (39, 107672), (40, 107690),

Gene: Scheme_209 Start: 107078, Stop: 107302, Start Num: 20
Candidate Starts for Scheme_209:

(16, 106973), (17, 107024), (Start: 20 @107078 has 65 MA's), (24, 107147), (31, 107183), (33, 107216), (39, 107267), (40, 107285),

Gene: Sollertia_220 Start: 106929, Stop: 107153, Start Num: 20

Candidate Starts for Sollertia_220:

(Start: 20 @106929 has 65 MA's), (23, 106998), (25, 107004), (27, 107019), (39, 107124),

Gene: Spelly_226 Start: 106075, Stop: 106302, Start Num: 20

Candidate Starts for Spelly_226:

(17, 106021), (Start: 20 @106075 has 65 MA's), (25, 106150), (30, 106183), (39, 106270),

Gene: Spilled_228 Start: 107279, Stop: 107506, Start Num: 20

Candidate Starts for Spilled_228:

(17, 107225), (Start: 20 @107279 has 65 MA's), (25, 107354), (30, 107387), (39, 107474),

Gene: Squillum_209 Start: 105300, Stop: 105524, Start Num: 20

Candidate Starts for Squillum_209:

(17, 105246), (Start: 20 @105300 has 65 MA's), (24, 105369), (27, 105384), (33, 105438), (39, 105489), (40, 105507),

Gene: Stanimal_219 Start: 107301, Stop: 107525, Start Num: 20

Candidate Starts for Stanimal_219:

(Start: 20 @107301 has 65 MA's), (23, 107370), (25, 107376), (27, 107391), (39, 107496),

Gene: StarPlatinum_228 Start: 109024, Stop: 109251, Start Num: 20

Candidate Starts for StarPlatinum_228:

(17, 108970), (Start: 20 @109024 has 65 MA's), (30, 109132), (39, 109219),

Gene: Starbow_218 Start: 106119, Stop: 106346, Start Num: 20

Candidate Starts for Starbow_218:

(17, 106065), (Start: 20 @106119 has 65 MA's), (25, 106194), (30, 106227), (39, 106314),

Gene: Sushi23_206 Start: 106493, Stop: 106717, Start Num: 20

Candidate Starts for Sushi23_206:

(16, 106388), (17, 106439), (Start: 20 @106493 has 65 MA's), (24, 106562), (31, 106598), (33, 106631), (39, 106682), (40, 106700),

Gene: Targaryen_206 Start: 106988, Stop: 107212, Start Num: 20

Candidate Starts for Targaryen_206:

(17, 106934), (Start: 20 @106988 has 65 MA's), (24, 107057), (29, 107084), (33, 107126), (39, 107177), (40, 107195),

Gene: Teutsch_206 Start: 106590, Stop: 106814, Start Num: 20

Candidate Starts for Teutsch_206:

(16, 106485), (17, 106536), (Start: 20 @106590 has 65 MA's), (24, 106659), (31, 106695), (33, 106728), (39, 106779), (40, 106797),

Gene: TomSawyer_225 Start: 108590, Stop: 108817, Start Num: 20

Candidate Starts for TomSawyer_225:

(17, 108536), (Start: 20 @108590 has 65 MA's), (25, 108665), (39, 108785),

Gene: Tribute_204 Start: 106430, Stop: 106654, Start Num: 20

Candidate Starts for Tribute_204:

(16, 106325), (17, 106376), (Start: 20 @106430 has 65 MA's), (24, 106499), (31, 106535), (33, 106568), (39, 106619), (40, 106637),

Gene: Warpy_210 Start: 105897, Stop: 106121, Start Num: 20

Candidate Starts for Warpy_210:

(17, 105843), (Start: 20 @105897 has 65 MA's), (24, 105966), (29, 105993), (33, 106035), (39, 106086), (40, 106104),

Gene: Watermoore_205 Start: 106835, Stop: 107059, Start Num: 20

Candidate Starts for Watermoore_205:

(16, 106730), (17, 106781), (Start: 20 @106835 has 65 MA's), (24, 106904), (31, 106940), (33, 106973), (39, 107024), (40, 107042),

Gene: WhereRU_206 Start: 105027, Stop: 105251, Start Num: 20

Candidate Starts for WhereRU_206:

(17, 104973), (Start: 20 @105027 has 65 MA's), (24, 105096), (27, 105111), (33, 105165), (39, 105216), (40, 105234),

Gene: Wipeout_212 Start: 107542, Stop: 107769, Start Num: 20

Candidate Starts for Wipeout_212:

(17, 107488), (Start: 20 @107542 has 65 MA's), (25, 107617), (39, 107737),

Gene: Wofford_222 Start: 110235, Stop: 110462, Start Num: 20

Candidate Starts for Wofford_222:

(Start: 20 @110235 has 65 MA's), (26, 110316), (27, 110325), (36, 110400), (39, 110430),

Gene: Yaboi_224 Start: 106864, Stop: 107088, Start Num: 20

Candidate Starts for Yaboi_224:

(Start: 20 @106864 has 65 MA's), (23, 106933), (25, 106939), (27, 106954), (39, 107059),