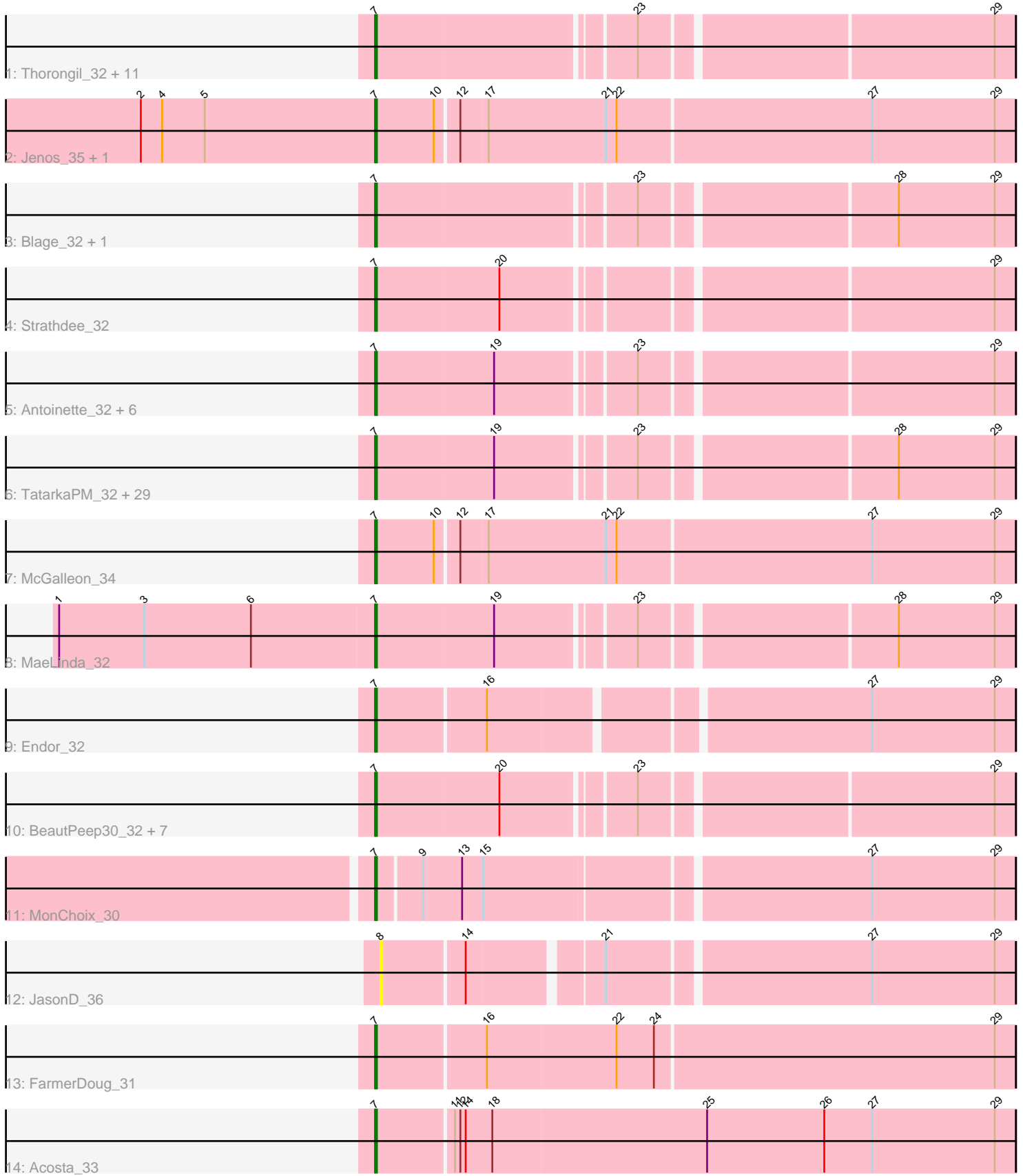


Pham 202918



Note: Tracks are now grouped by subcluster and scaled. Switching in subcluster is indicated by changes in track color. Track scale is now set by default to display the region 30 bp upstream of start 1 to 30 bp downstream of the last possible start. If this default region is judged to be packed too tightly with annotated starts, the track will be further scaled to only show that region of the ORF with annotated starts. This action will be indicated by adding "Zoomed" to the title. For starts, yellow indicates the location of called starts comprised solely of Glimmer/GeneMark auto-annotations, green indicates the location of called starts with at least 1 manual gene annotation.

Pham 202918 Report

This analysis was run 01/18/25 on database version 583.

Pham number 202918 has 69 members, 4 are drafts.

Phages represented in each track:

- Track 1 : Thorongil_32, Den3_32, Oxtober96_32, ShaiHulud_32, WildNOut_32, Lovelyunicorn_32, PuppyEggo_32, Velene_32, Vispistious_32, Zada_32, AxiPup_32, Greys_32
- Track 2 : Jenos_35, CarisSwetlik_35
- Track 3 : Blage_32, BigRedClifford_32
- Track 4 : Strathdee_32
- Track 5 : Antoinette_32, Renzie_32, Gargoyle_32, Superfresh_32, Alyxandracam_32, Dave_32, Peep_32
- Track 6 : TatarkaPM_32, PhredFlintston_32, TinSulphur_32, Nagem_32, Phiderman_32, Inventa_32, Stanktossa_32, Riyhil_32, NickSell_32, Dothraki_32, Teagan_32, Martin_33, OldNelly_32, Byron23_32, MillyPhilly_32, MrWorldwide_32, AlexAdler_32, Kurt1_32, Bandik_32, Phriends_32, ParleG_32, SJay_32, Figueroism_32, Delphidian_32, Shee_32, Ludgate_32, Rapheph_32, Robinson_32, SoilGremlin_32, Pherferi_32
- Track 7 : McGalleon_34
- Track 8 : MaeLinda_32
- Track 9 : Endor_32
- Track 10 : BeautPeep30_32, Ioannes_32, Thompsone_32, BonesMcCoy_32, Raptor_32, Phireproof_32, Knox_32, Convict_32
- Track 11 : MonChoix_30
- Track 12 : JasonD_36
- Track 13 : FarmerDoug_31
- Track 14 : Acosta_33

Summary of Final Annotations (See graph section above for start numbers):

The start number called the most often in the published annotations is 7, it was called in 65 of the 65 non-draft genes in the pham.

Genes that call this "Most Annotated" start:

- Acosta_33, AlexAdler_32, Alyxandracam_32, Antoinette_32, AxiPup_32, Bandik_32, BeautPeep30_32, BigRedClifford_32, Blage_32, BonesMcCoy_32, Byron23_32, CarisSwetlik_35, Convict_32, Dave_32, Delphidian_32, Den3_32, Dothraki_32, Endor_32, FarmerDoug_31, Figueroism_32, Gargoyle_32, Greys_32,

Inventa_32, Ioannes_32, Jenos_35, Knox_32, Kurt1_32, Lovelyunicorn_32, Ludgate_32, MaeLinda_32, Martin_33, McGalleon_34, MillyPhilly_32, MonChoix_30, MrWorldwide_32, Nagem_32, NickSell_32, OldNelly_32, Oxtober96_32, ParleG_32, Peep_32, Pherferi_32, Phiderman_32, Phireproof_32, PhredFlintston_32, Phriends_32, PuppyEggo_32, Rapheph_32, Raptor_32, Renzie_32, Riyhil_32, Robinson_32, SJay_32, ShaiHulud_32, Shee_32, SoilGremlin_32, Stanktossa_32, Strathdee_32, Superfresh_32, TatarkaPM_32, Teagan_32, Thompsone_32, Thorongil_32, TinSulphur_32, Velene_32, Vispistious_32, WildNOut_32, Zada_32,

Genes that have the "Most Annotated" start but do not call it:

-

Genes that do not have the "Most Annotated" start:

- JasonD_36,

Summary by start number:

Start 7:

- Found in 68 of 69 (98.6%) of genes in pham
- Manual Annotations of this start: 65 of 65
- Called 100.0% of time when present
- Phage (with cluster) where this start called: Acosta_33 (EA1), AlexAdler_32 (EA1), Alyxandracam_32 (EA1), Antoinette_32 (EA1), AxiPup_32 (EA1), Bandik_32 (EA1), BeautPeep30_32 (EA1), BigRedClifford_32 (EA1), Blage_32 (EA1), BonesMcCoy_32 (EA1), Byron23_32 (EA1), CarisSwetlik_35 (EA1), Convict_32 (EA1), Dave_32 (EA1), Delphidian_32 (EA1), Den3_32 (EA1), Dothraki_32 (EA1), Endor_32 (EA1), FarmerDoug_31 (EA1), Figueroism_32 (EA1), Gargoyle_32 (EA1), Greys_32 (EA1), Inventa_32 (EA1), Ioannes_32 (EA1), Jenos_35 (EA1), Knox_32 (EA1), Kurt1_32 (EA1), Lovelyunicorn_32 (EA1), Ludgate_32 (EA1), MaeLinda_32 (EA1), Martin_33 (EA1), McGalleon_34 (EA1), MillyPhilly_32 (EA1), MonChoix_30 (EA1), MrWorldwide_32 (EA1), Nagem_32 (EA1), NickSell_32 (EA1), OldNelly_32 (EA1), Oxtober96_32 (EA1), ParleG_32 (EA1), Peep_32 (EA1), Pherferi_32 (EA1), Phiderman_32 (EA1), Phireproof_32 (EA1), PhredFlintston_32 (EA1), Phriends_32 (EA1), PuppyEggo_32 (EA1), Rapheph_32 (EA1), Raptor_32 (EA1), Renzie_32 (EA1), Riyhil_32 (EA1), Robinson_32 (EA1), SJay_32 (EA1), ShaiHulud_32 (EA1), Shee_32 (EA1), SoilGremlin_32 (EA1), Stanktossa_32 (EA1), Strathdee_32 (EA1), Superfresh_32 (EA1), TatarkaPM_32 (EA1), Teagan_32 (EA1), Thompsone_32 (EA1), Thorongil_32 (EA1), TinSulphur_32 (EA1), Velene_32 (EA1), Vispistious_32 (EA1), WildNOut_32 (EA1), Zada_32 (EA1),

Start 8:

- Found in 1 of 69 (1.4%) of genes in pham
- No Manual Annotations of this start.
- Called 100.0% of time when present
- Phage (with cluster) where this start called: JasonD_36 (EA1),

Summary by clusters:

There is one cluster represented in this pham: EA1

Info for manual annotations of cluster EA1:

- Start number 7 was manually annotated 65 times for cluster EA1.

Gene Information:

Gene: Acosta_33 Start: 22545, Stop: 22189, Start Num: 7

Candidate Starts for Acosta_33:

(Start: 7 @22545 has 65 MA's), (11, 22503), (12, 22500), (14, 22497), (18, 22482), (25, 22362), (26, 22296), (27, 22269), (29, 22200),

Gene: AlexAdler_32 Start: 22169, Stop: 21831, Start Num: 7

Candidate Starts for AlexAdler_32:

(Start: 7 @22169 has 65 MA's), (19, 22103), (23, 22031), (28, 21896), (29, 21842),

Gene: Alyxandracam_32 Start: 22178, Stop: 21840, Start Num: 7

Candidate Starts for Alyxandracam_32:

(Start: 7 @22178 has 65 MA's), (19, 22112), (23, 22040), (29, 21851),

Gene: Antoinette_32 Start: 22166, Stop: 21828, Start Num: 7

Candidate Starts for Antoinette_32:

(Start: 7 @22166 has 65 MA's), (19, 22100), (23, 22028), (29, 21839),

Gene: AxiPup_32 Start: 22178, Stop: 21840, Start Num: 7

Candidate Starts for AxiPup_32:

(Start: 7 @22178 has 65 MA's), (23, 22040), (29, 21851),

Gene: Bandik_32 Start: 22174, Stop: 21836, Start Num: 7

Candidate Starts for Bandik_32:

(Start: 7 @22174 has 65 MA's), (19, 22108), (23, 22036), (28, 21901), (29, 21847),

Gene: BeautPeep30_32 Start: 22180, Stop: 21842, Start Num: 7

Candidate Starts for BeautPeep30_32:

(Start: 7 @22180 has 65 MA's), (20, 22111), (23, 22042), (29, 21853),

Gene: BigRedClifford_32 Start: 22178, Stop: 21840, Start Num: 7

Candidate Starts for BigRedClifford_32:

(Start: 7 @22178 has 65 MA's), (23, 22040), (28, 21905), (29, 21851),

Gene: Blage_32 Start: 22178, Stop: 21840, Start Num: 7

Candidate Starts for Blage_32:

(Start: 7 @22178 has 65 MA's), (23, 22040), (28, 21905), (29, 21851),

Gene: BonesMcCoy_32 Start: 22178, Stop: 21840, Start Num: 7

Candidate Starts for BonesMcCoy_32:

(Start: 7 @22178 has 65 MA's), (20, 22109), (23, 22040), (29, 21851),

Gene: Byron23_32 Start: 22183, Stop: 21845, Start Num: 7

Candidate Starts for Byron23_32:

(Start: 7 @22183 has 65 MA's), (19, 22117), (23, 22045), (28, 21910), (29, 21856),

Gene: CarisSwetlik_35 Start: 23038, Stop: 22685, Start Num: 7

Candidate Starts for CarisSwetlik_35:

(2, 23170), (4, 23158), (5, 23134), (Start: 7 @23038 has 65 MA's), (10, 23005), (12, 22993), (17, 22978), (21, 22912), (22, 22906), (27, 22765), (29, 22696),

Gene: Convict_32 Start: 22178, Stop: 21840, Start Num: 7
Candidate Starts for Convict_32:
(Start: 7 @22178 has 65 MA's), (20, 22109), (23, 22040), (29, 21851),

Gene: Dave_32 Start: 22166, Stop: 21828, Start Num: 7
Candidate Starts for Dave_32:
(Start: 7 @22166 has 65 MA's), (19, 22100), (23, 22028), (29, 21839),

Gene: Delphidian_32 Start: 22177, Stop: 21839, Start Num: 7
Candidate Starts for Delphidian_32:
(Start: 7 @22177 has 65 MA's), (19, 22111), (23, 22039), (28, 21904), (29, 21850),

Gene: Den3_32 Start: 22183, Stop: 21845, Start Num: 7
Candidate Starts for Den3_32:
(Start: 7 @22183 has 65 MA's), (23, 22045), (29, 21856),

Gene: Dothraki_32 Start: 22180, Stop: 21842, Start Num: 7
Candidate Starts for Dothraki_32:
(Start: 7 @22180 has 65 MA's), (19, 22114), (23, 22042), (28, 21907), (29, 21853),

Gene: Endor_32 Start: 22483, Stop: 22142, Start Num: 7
Candidate Starts for Endor_32:
(Start: 7 @22483 has 65 MA's), (16, 22423), (27, 22222), (29, 22153),

Gene: FarmerDoug_31 Start: 22136, Stop: 21783, Start Num: 7
Candidate Starts for FarmerDoug_31:
(Start: 7 @22136 has 65 MA's), (16, 22076), (22, 22004), (24, 21983), (29, 21794),

Gene: Figueroism_32 Start: 22165, Stop: 21827, Start Num: 7
Candidate Starts for Figueroism_32:
(Start: 7 @22165 has 65 MA's), (19, 22099), (23, 22027), (28, 21892), (29, 21838),

Gene: Gargoyle_32 Start: 22180, Stop: 21842, Start Num: 7
Candidate Starts for Gargoyle_32:
(Start: 7 @22180 has 65 MA's), (19, 22114), (23, 22042), (29, 21853),

Gene: Greys_32 Start: 22176, Stop: 21838, Start Num: 7
Candidate Starts for Greys_32:
(Start: 7 @22176 has 65 MA's), (23, 22038), (29, 21849),

Gene: Inventa_32 Start: 22180, Stop: 21842, Start Num: 7
Candidate Starts for Inventa_32:
(Start: 7 @22180 has 65 MA's), (19, 22114), (23, 22042), (28, 21907), (29, 21853),

Gene: Ioannes_32 Start: 22178, Stop: 21840, Start Num: 7
Candidate Starts for Ioannes_32:
(Start: 7 @22178 has 65 MA's), (20, 22109), (23, 22040), (29, 21851),

Gene: JasonD_36 Start: 22680, Stop: 22345, Start Num: 8
Candidate Starts for JasonD_36:
(8, 22680), (14, 22635), (21, 22566), (27, 22425), (29, 22356),

Gene: Jenos_35 Start: 23335, Stop: 22982, Start Num: 7
Candidate Starts for Jenos_35:
(2, 23467), (4, 23455), (5, 23431), (Start: 7 @23335 has 65 MA's), (10, 23302), (12, 23290), (17, 23275), (21, 23209), (22, 23203), (27, 23062), (29, 22993),

Gene: Knox_32 Start: 22178, Stop: 21840, Start Num: 7
Candidate Starts for Knox_32:
(Start: 7 @22178 has 65 MA's), (20, 22109), (23, 22040), (29, 21851),

Gene: Kurt1_32 Start: 22180, Stop: 21842, Start Num: 7
Candidate Starts for Kurt1_32:
(Start: 7 @22180 has 65 MA's), (19, 22114), (23, 22042), (28, 21907), (29, 21853),

Gene: Lovelyunicorn_32 Start: 22179, Stop: 21841, Start Num: 7
Candidate Starts for Lovelyunicorn_32:
(Start: 7 @22179 has 65 MA's), (23, 22041), (29, 21852),

Gene: Ludgate_32 Start: 22174, Stop: 21836, Start Num: 7
Candidate Starts for Ludgate_32:
(Start: 7 @22174 has 65 MA's), (19, 22108), (23, 22036), (28, 21901), (29, 21847),

Gene: MaeLinda_32 Start: 22180, Stop: 21842, Start Num: 7
Candidate Starts for MaeLinda_32:
(1, 22357), (3, 22309), (6, 22249), (Start: 7 @22180 has 65 MA's), (19, 22114), (23, 22042), (28, 21907), (29, 21853),

Gene: Martin_33 Start: 22180, Stop: 21842, Start Num: 7
Candidate Starts for Martin_33:
(Start: 7 @22180 has 65 MA's), (19, 22114), (23, 22042), (28, 21907), (29, 21853),

Gene: McGalleon_34 Start: 23557, Stop: 23204, Start Num: 7
Candidate Starts for McGalleon_34:
(Start: 7 @23557 has 65 MA's), (10, 23524), (12, 23512), (17, 23497), (21, 23431), (22, 23425), (27, 23284), (29, 23215),

Gene: MillyPhilly_32 Start: 22177, Stop: 21839, Start Num: 7
Candidate Starts for MillyPhilly_32:
(Start: 7 @22177 has 65 MA's), (19, 22111), (23, 22039), (28, 21904), (29, 21850),

Gene: MonChoix_30 Start: 22172, Stop: 21828, Start Num: 7
Candidate Starts for MonChoix_30:
(Start: 7 @22172 has 65 MA's), (9, 22148), (13, 22127), (15, 22115), (27, 21908), (29, 21839),

Gene: MrWorldwide_32 Start: 22181, Stop: 21843, Start Num: 7
Candidate Starts for MrWorldwide_32:
(Start: 7 @22181 has 65 MA's), (19, 22115), (23, 22043), (28, 21908), (29, 21854),

Gene: Nagem_32 Start: 22174, Stop: 21836, Start Num: 7
Candidate Starts for Nagem_32:
(Start: 7 @22174 has 65 MA's), (19, 22108), (23, 22036), (28, 21901), (29, 21847),

Gene: NickSell_32 Start: 22180, Stop: 21842, Start Num: 7
Candidate Starts for NickSell_32:

(Start: 7 @22180 has 65 MA's), (19, 22114), (23, 22042), (28, 21907), (29, 21853),

Gene: OldNelly_32 Start: 22180, Stop: 21842, Start Num: 7

Candidate Starts for OldNelly_32:

(Start: 7 @22180 has 65 MA's), (19, 22114), (23, 22042), (28, 21907), (29, 21853),

Gene: Oxtober96_32 Start: 22179, Stop: 21841, Start Num: 7

Candidate Starts for Oxtober96_32:

(Start: 7 @22179 has 65 MA's), (23, 22041), (29, 21852),

Gene: ParleG_32 Start: 22181, Stop: 21843, Start Num: 7

Candidate Starts for ParleG_32:

(Start: 7 @22181 has 65 MA's), (19, 22115), (23, 22043), (28, 21908), (29, 21854),

Gene: Peep_32 Start: 22166, Stop: 21828, Start Num: 7

Candidate Starts for Peep_32:

(Start: 7 @22166 has 65 MA's), (19, 22100), (23, 22028), (29, 21839),

Gene: Pherferi_32 Start: 22180, Stop: 21842, Start Num: 7

Candidate Starts for Pherferi_32:

(Start: 7 @22180 has 65 MA's), (19, 22114), (23, 22042), (28, 21907), (29, 21853),

Gene: Phiderman_32 Start: 22177, Stop: 21839, Start Num: 7

Candidate Starts for Phiderman_32:

(Start: 7 @22177 has 65 MA's), (19, 22111), (23, 22039), (28, 21904), (29, 21850),

Gene: Phireproof_32 Start: 22180, Stop: 21842, Start Num: 7

Candidate Starts for Phireproof_32:

(Start: 7 @22180 has 65 MA's), (20, 22111), (23, 22042), (29, 21853),

Gene: PhredFlintston_32 Start: 22180, Stop: 21842, Start Num: 7

Candidate Starts for PhredFlintston_32:

(Start: 7 @22180 has 65 MA's), (19, 22114), (23, 22042), (28, 21907), (29, 21853),

Gene: Phriends_32 Start: 22180, Stop: 21842, Start Num: 7

Candidate Starts for Phriends_32:

(Start: 7 @22180 has 65 MA's), (19, 22114), (23, 22042), (28, 21907), (29, 21853),

Gene: PuppyEggo_32 Start: 22178, Stop: 21840, Start Num: 7

Candidate Starts for PuppyEggo_32:

(Start: 7 @22178 has 65 MA's), (23, 22040), (29, 21851),

Gene: Rapheph_32 Start: 22180, Stop: 21842, Start Num: 7

Candidate Starts for Rapheph_32:

(Start: 7 @22180 has 65 MA's), (19, 22114), (23, 22042), (28, 21907), (29, 21853),

Gene: Raptor_32 Start: 22178, Stop: 21840, Start Num: 7

Candidate Starts for Raptor_32:

(Start: 7 @22178 has 65 MA's), (20, 22109), (23, 22040), (29, 21851),

Gene: Renzie_32 Start: 22166, Stop: 21828, Start Num: 7

Candidate Starts for Renzie_32:

(Start: 7 @22166 has 65 MA's), (19, 22100), (23, 22028), (29, 21839),

Gene: Riyhil_32 Start: 22180, Stop: 21842, Start Num: 7
Candidate Starts for Riyhil_32:
(Start: 7 @22180 has 65 MA's), (19, 22114), (23, 22042), (28, 21907), (29, 21853),

Gene: Robinson_32 Start: 22172, Stop: 21834, Start Num: 7
Candidate Starts for Robinson_32:
(Start: 7 @22172 has 65 MA's), (19, 22106), (23, 22034), (28, 21899), (29, 21845),

Gene: SJay_32 Start: 22175, Stop: 21837, Start Num: 7
Candidate Starts for SJay_32:
(Start: 7 @22175 has 65 MA's), (19, 22109), (23, 22037), (28, 21902), (29, 21848),

Gene: ShaiHulud_32 Start: 22178, Stop: 21840, Start Num: 7
Candidate Starts for ShaiHulud_32:
(Start: 7 @22178 has 65 MA's), (23, 22040), (29, 21851),

Gene: Shee_32 Start: 22177, Stop: 21839, Start Num: 7
Candidate Starts for Shee_32:
(Start: 7 @22177 has 65 MA's), (19, 22111), (23, 22039), (28, 21904), (29, 21850),

Gene: SoilGremlin_32 Start: 22177, Stop: 21839, Start Num: 7
Candidate Starts for SoilGremlin_32:
(Start: 7 @22177 has 65 MA's), (19, 22111), (23, 22039), (28, 21904), (29, 21850),

Gene: Stanktossa_32 Start: 22180, Stop: 21842, Start Num: 7
Candidate Starts for Stanktossa_32:
(Start: 7 @22180 has 65 MA's), (19, 22114), (23, 22042), (28, 21907), (29, 21853),

Gene: Strathdee_32 Start: 22179, Stop: 21841, Start Num: 7
Candidate Starts for Strathdee_32:
(Start: 7 @22179 has 65 MA's), (20, 22110), (29, 21852),

Gene: Superfresh_32 Start: 22166, Stop: 21828, Start Num: 7
Candidate Starts for Superfresh_32:
(Start: 7 @22166 has 65 MA's), (19, 22100), (23, 22028), (29, 21839),

Gene: TatarkaPM_32 Start: 22180, Stop: 21842, Start Num: 7
Candidate Starts for TatarkaPM_32:
(Start: 7 @22180 has 65 MA's), (19, 22114), (23, 22042), (28, 21907), (29, 21853),

Gene: Teagan_32 Start: 22174, Stop: 21836, Start Num: 7
Candidate Starts for Teagan_32:
(Start: 7 @22174 has 65 MA's), (19, 22108), (23, 22036), (28, 21901), (29, 21847),

Gene: Thompsone_32 Start: 22178, Stop: 21840, Start Num: 7
Candidate Starts for Thompsone_32:
(Start: 7 @22178 has 65 MA's), (20, 22109), (23, 22040), (29, 21851),

Gene: Thorongil_32 Start: 22178, Stop: 21840, Start Num: 7
Candidate Starts for Thorongil_32:
(Start: 7 @22178 has 65 MA's), (23, 22040), (29, 21851),

Gene: TinSulphur_32 Start: 22180, Stop: 21842, Start Num: 7

Candidate Starts for TinSulphur_32:

(Start: 7 @22180 has 65 MA's), (19, 22114), (23, 22042), (28, 21907), (29, 21853),

Gene: Velene_32 Start: 22179, Stop: 21841, Start Num: 7

Candidate Starts for Velene_32:

(Start: 7 @22179 has 65 MA's), (23, 22041), (29, 21852),

Gene: Vispistious_32 Start: 22178, Stop: 21840, Start Num: 7

Candidate Starts for Vispistious_32:

(Start: 7 @22178 has 65 MA's), (23, 22040), (29, 21851),

Gene: WildNOut_32 Start: 22178, Stop: 21840, Start Num: 7

Candidate Starts for WildNOut_32:

(Start: 7 @22178 has 65 MA's), (23, 22040), (29, 21851),

Gene: Zada_32 Start: 22159, Stop: 21821, Start Num: 7

Candidate Starts for Zada_32:

(Start: 7 @22159 has 65 MA's), (23, 22021), (29, 21832),