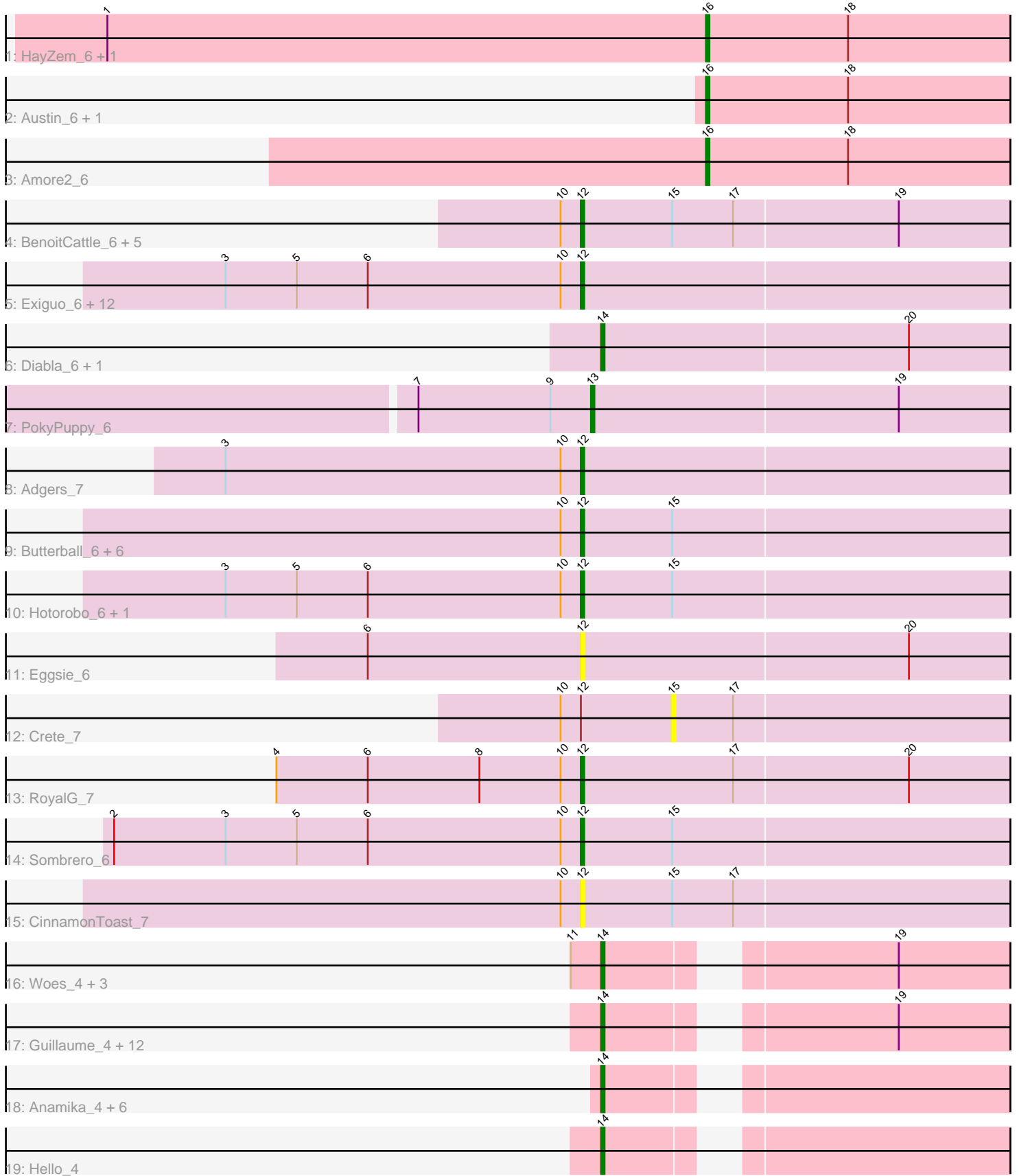


Pham 202926



Note: Tracks are now grouped by subcluster and scaled. Switching in subcluster is indicated by changes in track color. Track scale is now set by default to display the region 30 bp upstream of start 1 to 30 bp downstream of the last possible start. If this default region is judged to be packed too tightly with annotated starts, the track will be further scaled to only show that region of the ORF with annotated starts. This action will be indicated by adding "Zoomed" to the title. For starts, yellow indicates the location of called starts comprised solely of Glimmer/GeneMark auto-annotations, green indicates the location of called starts with at least 1 manual gene annotation.

Pham 202926 Report

This analysis was run 01/18/25 on database version 583.

Pham number 202926 has 67 members, 11 are drafts.

Phages represented in each track:

- Track 1 : HayZem_6, GMA7_99
- Track 2 : Austin_6, GTE7_99
- Track 3 : Amore2_6
- Track 4 : BenoitCattle_6, Dakiti_6, BigShaq_6, Linetti_7, Chelms_6, PierreThree_6
- Track 5 : Exiguo_6, Lizzo_6, GourdThymes_6, RemRem_6, CathyBurgh_6, Breezic_6, Squibbles_6, Gorko_6, Flakey_6, Worcestershire_6, Sam12_6, John316_6, Barbochs_6
- Track 6 : Diabla_6, SteveFrench_6
- Track 7 : PokyPuppy_6
- Track 8 : Adgers_7
- Track 9 : Butterball_6, Jellybones_6, Boneham_6, BirksAndSocks_6, Poland_7, Msay19_7, FelixAlejandro_7
- Track 10 : Hotorobo_6, Ekhein_6
- Track 11 : Eggsie_6
- Track 12 : Crete_7
- Track 13 : RoyalG_7
- Track 14 : Sombrero_6
- Track 15 : CinnamonToast_7
- Track 16 : Woes_4, Minos_4, Jams_4, Damp_4
- Track 17 : Guillaume_4, MrWormie_4, Sticker17_4, Shelley_4, Charianelly_4, Nimi13_4, Lidong_4, Kaseim_4, Teal_4, Newt_4, Bianmat_4, Berries_4, GalacticEye_4
- Track 18 : Anamika_4, Luker_4, Harambe_4, Jormungandr_4, Hail2Pitt_4, Lahirium_4, Neoevie_4
- Track 19 : Hello_4

Summary of Final Annotations (See graph section above for start numbers):

The start number called the most often in the published annotations is 12, it was called in 26 of the 56 non-draft genes in the pham.

Genes that call this "Most Annotated" start:

- Adgers_7, Barbochs_6, BenoitCattle_6, BigShaq_6, BirksAndSocks_6, Boneham_6, Breezic_6, Butterball_6, CathyBurgh_6, Chelms_6, CinnamonToast_7, Dakiti_6,

Eggsie_6, Ekhein_6, Exiguo_6, FelixAlejandro_7, Flakey_6, Gorko_6, GourdThymes_6, Hotorobo_6, Jellybones_6, John316_6, Linetti_7, Lizzo_6, Msay19_7, PierreThree_6, Poland_7, RemRem_6, RoyalG_7, Sam12_6, Sombrero_6, Squibbles_6, Worcestershire_6,

Genes that have the "Most Annotated" start but do not call it:

- Crete_7,

Genes that do not have the "Most Annotated" start:

- Amore2_6, Anamika_4, Austin_6, Berries_4, Bianmat_4, Charianelly_4, Damp_4, Diabla_6, GMA7_99, GTE7_99, GalacticEye_4, Guillaume_4, Hail2Pitt_4, Harambe_4, HayZem_6, Hello_4, Jams_4, Jormungandr_4, Kaseim_4, Lahirium_4, Lidong_4, Luker_4, Minos_4, MrWormie_4, Neoevie_4, Newt_4, Nimi13_4, PokyPuppy_6, Shelley_4, SteveFrench_6, Sticker17_4, Teal_4, Woes_4,

Summary by start number:

Start 12:

- Found in 34 of 67 (50.7%) of genes in pham
- Manual Annotations of this start: 26 of 56
- Called 97.1% of time when present
- Phage (with cluster) where this start called: Adgers_7 (CS2), Barbochs_6 (CS2), BenoitCattle_6 (CS2), BigShaq_6 (CS2), BirksAndSocks_6 (CS2), Boneham_6 (CS2), Breezic_6 (CS2), Butterball_6 (CS2), CathyBurgh_6 (CS2), Chelms_6 (CS2), CinnamonToast_7 (CS2), Dakiti_6 (CS2), Eggsie_6 (CS2), Ekhein_6 (CS2), Exiguo_6 (CS2), FelixAlejandro_7 (CS2), Flakey_6 (CS2), Gorko_6 (CS2), GourdThymes_6 (CS2), Hotorobo_6 (CS2), Jellybones_6 (CS2), John316_6 (CS2), Linetti_7 (CS2), Lizzo_6 (CS2), Msay19_7 (CS2), PierreThree_6 (CS2), Poland_7 (CS2), RemRem_6 (CS2), RoyalG_7 (CS2), Sam12_6 (CS2), Sombrero_6 (CS2), Squibbles_6 (CS2), Worcestershire_6 (CS2),

Start 13:

- Found in 1 of 67 (1.5%) of genes in pham
- Manual Annotations of this start: 1 of 56
- Called 100.0% of time when present
- Phage (with cluster) where this start called: PokyPuppy_6 (CS2),

Start 14:

- Found in 27 of 67 (40.3%) of genes in pham
- Manual Annotations of this start: 26 of 56
- Called 100.0% of time when present
- Phage (with cluster) where this start called: Anamika_4 (CS3), Berries_4 (CS3), Bianmat_4 (CS3), Charianelly_4 (CS3), Damp_4 (CS3), Diabla_6 (CS2), GalacticEye_4 (CS3), Guillaume_4 (CS3), Hail2Pitt_4 (CS3), Harambe_4 (CS3), Hello_4 (CS3), Jams_4 (CS3), Jormungandr_4 (CS3), Kaseim_4 (CS3), Lahirium_4 (CS3), Lidong_4 (CS3), Luker_4 (CS3), Minos_4 (CS3), MrWormie_4 (CS3), Neoevie_4 (CS3), Newt_4 (CS3), Nimi13_4 (CS3), Shelley_4 (CS3), SteveFrench_6 (CS2), Sticker17_4 (CS3), Teal_4 (CS3), Woes_4 (CS3),

Start 15:

- Found in 18 of 67 (26.9%) of genes in pham
- No Manual Annotations of this start.
- Called 5.6% of time when present

- Phage (with cluster) where this start called: Crete_7 (CS2),

Start 16:

- Found in 5 of 67 (7.5%) of genes in pham
- Manual Annotations of this start: 3 of 56
- Called 100.0% of time when present
- Phage (with cluster) where this start called: Amore2_6 (CS1), Austin_6 (CS1), GMA7_99 (CS1), GTE7_99 (CS1), HayZem_6 (CS1),

Summary by clusters:

There are 3 clusters represented in this pham: CS1, CS3, CS2,

Info for manual annotations of cluster CS1:

- Start number 16 was manually annotated 3 times for cluster CS1.

Info for manual annotations of cluster CS2:

- Start number 12 was manually annotated 26 times for cluster CS2.
- Start number 13 was manually annotated 1 time for cluster CS2.
- Start number 14 was manually annotated 2 times for cluster CS2.

Info for manual annotations of cluster CS3:

- Start number 14 was manually annotated 24 times for cluster CS3.

Gene Information:

Gene: Adgers_7 Start: 4589, Stop: 4446, Start Num: 12

Candidate Starts for Adgers_7:

(3, 4694), (10, 4595), (Start: 12 @4589 has 26 MA's),

Gene: Amore2_6 Start: 4330, Stop: 4217, Start Num: 16

Candidate Starts for Amore2_6:

(Start: 16 @4330 has 3 MA's), (18, 4288),

Gene: Anamika_4 Start: 3734, Stop: 3615, Start Num: 14

Candidate Starts for Anamika_4:

(Start: 14 @3734 has 26 MA's),

Gene: Austin_6 Start: 4330, Stop: 4217, Start Num: 16

Candidate Starts for Austin_6:

(Start: 16 @4330 has 3 MA's), (18, 4288),

Gene: Barbochs_6 Start: 4424, Stop: 4281, Start Num: 12

Candidate Starts for Barbochs_6:

(3, 4529), (5, 4508), (6, 4487), (10, 4430), (Start: 12 @4424 has 26 MA's),

Gene: BenoitCattle_6 Start: 4413, Stop: 4270, Start Num: 12

Candidate Starts for BenoitCattle_6:

(10, 4419), (Start: 12 @4413 has 26 MA's), (15, 4386), (17, 4368), (19, 4320),

Gene: Berries_4 Start: 3723, Stop: 3598, Start Num: 14

Candidate Starts for Berries_4:
(Start: 14 @3723 has 26 MA's), (19, 3651),

Gene: Bianmat_4 Start: 3746, Stop: 3621, Start Num: 14
Candidate Starts for Bianmat_4:
(Start: 14 @3746 has 26 MA's), (19, 3674),

Gene: BigShaq_6 Start: 4415, Stop: 4272, Start Num: 12
Candidate Starts for BigShaq_6:
(10, 4421), (Start: 12 @4415 has 26 MA's), (15, 4388), (17, 4370), (19, 4322),

Gene: BirksAndSocks_6 Start: 4424, Stop: 4281, Start Num: 12
Candidate Starts for BirksAndSocks_6:
(10, 4430), (Start: 12 @4424 has 26 MA's), (15, 4397),

Gene: Boneham_6 Start: 4423, Stop: 4280, Start Num: 12
Candidate Starts for Boneham_6:
(10, 4429), (Start: 12 @4423 has 26 MA's), (15, 4396),

Gene: Breezic_6 Start: 4435, Stop: 4292, Start Num: 12
Candidate Starts for Breezic_6:
(3, 4540), (5, 4519), (6, 4498), (10, 4441), (Start: 12 @4435 has 26 MA's),

Gene: Butterball_6 Start: 4423, Stop: 4280, Start Num: 12
Candidate Starts for Butterball_6:
(10, 4429), (Start: 12 @4423 has 26 MA's), (15, 4396),

Gene: CathyBurgh_6 Start: 4423, Stop: 4280, Start Num: 12
Candidate Starts for CathyBurgh_6:
(3, 4528), (5, 4507), (6, 4486), (10, 4429), (Start: 12 @4423 has 26 MA's),

Gene: Charianelly_4 Start: 3734, Stop: 3609, Start Num: 14
Candidate Starts for Charianelly_4:
(Start: 14 @3734 has 26 MA's), (19, 3662),

Gene: Chelms_6 Start: 4415, Stop: 4272, Start Num: 12
Candidate Starts for Chelms_6:
(10, 4421), (Start: 12 @4415 has 26 MA's), (15, 4388), (17, 4370), (19, 4322),

Gene: CinnamonToast_7 Start: 4459, Stop: 4316, Start Num: 12
Candidate Starts for CinnamonToast_7:
(10, 4465), (Start: 12 @4459 has 26 MA's), (15, 4432), (17, 4414),

Gene: Crete_7 Start: 4639, Stop: 4523, Start Num: 15
Candidate Starts for Crete_7:
(10, 4672), (Start: 12 @4666 has 26 MA's), (15, 4639), (17, 4621),

Gene: Dakiti_6 Start: 4415, Stop: 4272, Start Num: 12
Candidate Starts for Dakiti_6:
(10, 4421), (Start: 12 @4415 has 26 MA's), (15, 4388), (17, 4370), (19, 4322),

Gene: Damp_4 Start: 3726, Stop: 3601, Start Num: 14
Candidate Starts for Damp_4:

(11, 3735), (Start: 14 @3726 has 26 MA's), (19, 3654),

Gene: Diabla_6 Start: 4440, Stop: 4303, Start Num: 14

Candidate Starts for Diabla_6:

(Start: 14 @4440 has 26 MA's), (20, 4350),

Gene: Eggsie_6 Start: 4435, Stop: 4292, Start Num: 12

Candidate Starts for Eggsie_6:

(6, 4498), (Start: 12 @4435 has 26 MA's), (20, 4339),

Gene: Ekhein_6 Start: 4423, Stop: 4280, Start Num: 12

Candidate Starts for Ekhein_6:

(3, 4528), (5, 4507), (6, 4486), (10, 4429), (Start: 12 @4423 has 26 MA's), (15, 4396),

Gene: Exiguo_6 Start: 4435, Stop: 4292, Start Num: 12

Candidate Starts for Exiguo_6:

(3, 4540), (5, 4519), (6, 4498), (10, 4441), (Start: 12 @4435 has 26 MA's),

Gene: FelixAlejandro_7 Start: 4621, Stop: 4478, Start Num: 12

Candidate Starts for FelixAlejandro_7:

(10, 4627), (Start: 12 @4621 has 26 MA's), (15, 4594),

Gene: Flakey_6 Start: 4424, Stop: 4281, Start Num: 12

Candidate Starts for Flakey_6:

(3, 4529), (5, 4508), (6, 4487), (10, 4430), (Start: 12 @4424 has 26 MA's),

Gene: GMA7_99 Start: 71938, Stop: 71825, Start Num: 16

Candidate Starts for GMA7_99:

(1, 72115), (Start: 16 @71938 has 3 MA's), (18, 71896),

Gene: GTE7_99 Start: 72935, Stop: 72822, Start Num: 16

Candidate Starts for GTE7_99:

(Start: 16 @72935 has 3 MA's), (18, 72893),

Gene: GalacticEye_4 Start: 3723, Stop: 3598, Start Num: 14

Candidate Starts for GalacticEye_4:

(Start: 14 @3723 has 26 MA's), (19, 3651),

Gene: Gorko_6 Start: 4424, Stop: 4281, Start Num: 12

Candidate Starts for Gorko_6:

(3, 4529), (5, 4508), (6, 4487), (10, 4430), (Start: 12 @4424 has 26 MA's),

Gene: GourdThymes_6 Start: 4423, Stop: 4280, Start Num: 12

Candidate Starts for GourdThymes_6:

(3, 4528), (5, 4507), (6, 4486), (10, 4429), (Start: 12 @4423 has 26 MA's),

Gene: Guillaume_4 Start: 3734, Stop: 3609, Start Num: 14

Candidate Starts for Guillaume_4:

(Start: 14 @3734 has 26 MA's), (19, 3662),

Gene: Hail2Pitt_4 Start: 3712, Stop: 3593, Start Num: 14

Candidate Starts for Hail2Pitt_4:

(Start: 14 @3712 has 26 MA's),

Gene: Harambe_4 Start: 3733, Stop: 3614, Start Num: 14
Candidate Starts for Harambe_4:
(Start: 14 @3733 has 26 MA's),

Gene: HayZem_6 Start: 4330, Stop: 4217, Start Num: 16
Candidate Starts for HayZem_6:
(1, 4507), (Start: 16 @4330 has 3 MA's), (18, 4288),

Gene: Hello_4 Start: 3723, Stop: 3598, Start Num: 14
Candidate Starts for Hello_4:
(Start: 14 @3723 has 26 MA's),

Gene: Hotorobo_6 Start: 4434, Stop: 4291, Start Num: 12
Candidate Starts for Hotorobo_6:
(3, 4539), (5, 4518), (6, 4497), (10, 4440), (Start: 12 @4434 has 26 MA's), (15, 4407),

Gene: Jams_4 Start: 3746, Stop: 3621, Start Num: 14
Candidate Starts for Jams_4:
(11, 3755), (Start: 14 @3746 has 26 MA's), (19, 3674),

Gene: Jellybones_6 Start: 4458, Stop: 4315, Start Num: 12
Candidate Starts for Jellybones_6:
(10, 4464), (Start: 12 @4458 has 26 MA's), (15, 4431),

Gene: John316_6 Start: 4423, Stop: 4280, Start Num: 12
Candidate Starts for John316_6:
(3, 4528), (5, 4507), (6, 4486), (10, 4429), (Start: 12 @4423 has 26 MA's),

Gene: Jormungandr_4 Start: 3732, Stop: 3613, Start Num: 14
Candidate Starts for Jormungandr_4:
(Start: 14 @3732 has 26 MA's),

Gene: Kaseim_4 Start: 3734, Stop: 3609, Start Num: 14
Candidate Starts for Kaseim_4:
(Start: 14 @3734 has 26 MA's), (19, 3662),

Gene: Lahirium_4 Start: 3733, Stop: 3614, Start Num: 14
Candidate Starts for Lahirium_4:
(Start: 14 @3733 has 26 MA's),

Gene: Lidong_4 Start: 3723, Stop: 3598, Start Num: 14
Candidate Starts for Lidong_4:
(Start: 14 @3723 has 26 MA's), (19, 3651),

Gene: Linetti_7 Start: 4568, Stop: 4425, Start Num: 12
Candidate Starts for Linetti_7:
(10, 4574), (Start: 12 @4568 has 26 MA's), (15, 4541), (17, 4523), (19, 4475),

Gene: Lizzo_6 Start: 4423, Stop: 4280, Start Num: 12
Candidate Starts for Lizzo_6:
(3, 4528), (5, 4507), (6, 4486), (10, 4429), (Start: 12 @4423 has 26 MA's),

Gene: Luker_4 Start: 3712, Stop: 3593, Start Num: 14
Candidate Starts for Luker_4:
(Start: 14 @3712 has 26 MA's),

Gene: Minos_4 Start: 3726, Stop: 3601, Start Num: 14
Candidate Starts for Minos_4:
(11, 3735), (Start: 14 @3726 has 26 MA's), (19, 3654),

Gene: MrWormie_4 Start: 3712, Stop: 3587, Start Num: 14
Candidate Starts for MrWormie_4:
(Start: 14 @3712 has 26 MA's), (19, 3640),

Gene: Msay19_7 Start: 4613, Stop: 4470, Start Num: 12
Candidate Starts for Msay19_7:
(10, 4619), (Start: 12 @4613 has 26 MA's), (15, 4586),

Gene: Neoevie_4 Start: 3710, Stop: 3591, Start Num: 14
Candidate Starts for Neoevie_4:
(Start: 14 @3710 has 26 MA's),

Gene: Newt_4 Start: 3734, Stop: 3609, Start Num: 14
Candidate Starts for Newt_4:
(Start: 14 @3734 has 26 MA's), (19, 3662),

Gene: Nimi13_4 Start: 3735, Stop: 3610, Start Num: 14
Candidate Starts for Nimi13_4:
(Start: 14 @3735 has 26 MA's), (19, 3663),

Gene: PierreThree_6 Start: 4415, Stop: 4272, Start Num: 12
Candidate Starts for PierreThree_6:
(10, 4421), (Start: 12 @4415 has 26 MA's), (15, 4388), (17, 4370), (19, 4322),

Gene: PokyPuppy_6 Start: 4498, Stop: 4358, Start Num: 13
Candidate Starts for PokyPuppy_6:
(7, 4549), (9, 4510), (Start: 13 @4498 has 1 MA's), (19, 4408),

Gene: Poland_7 Start: 4589, Stop: 4446, Start Num: 12
Candidate Starts for Poland_7:
(10, 4595), (Start: 12 @4589 has 26 MA's), (15, 4562),

Gene: RemRem_6 Start: 4435, Stop: 4292, Start Num: 12
Candidate Starts for RemRem_6:
(3, 4540), (5, 4519), (6, 4498), (10, 4441), (Start: 12 @4435 has 26 MA's),

Gene: RoyalG_7 Start: 4630, Stop: 4487, Start Num: 12
Candidate Starts for RoyalG_7:
(4, 4720), (6, 4693), (8, 4660), (10, 4636), (Start: 12 @4630 has 26 MA's), (17, 4585), (20, 4534),

Gene: Sam12_6 Start: 4435, Stop: 4292, Start Num: 12
Candidate Starts for Sam12_6:
(3, 4540), (5, 4519), (6, 4498), (10, 4441), (Start: 12 @4435 has 26 MA's),

Gene: Shelley_4 Start: 3757, Stop: 3632, Start Num: 14

Candidate Starts for Shelley_4:
(Start: 14 @3757 has 26 MA's), (19, 3685),

Gene: Sombrero_6 Start: 4469, Stop: 4326, Start Num: 12
Candidate Starts for Sombrero_6:
(2, 4607), (3, 4574), (5, 4553), (6, 4532), (10, 4475), (Start: 12 @4469 has 26 MA's), (15, 4442),

Gene: Squibbles_6 Start: 4423, Stop: 4280, Start Num: 12
Candidate Starts for Squibbles_6:
(3, 4528), (5, 4507), (6, 4486), (10, 4429), (Start: 12 @4423 has 26 MA's),

Gene: SteveFrench_6 Start: 4429, Stop: 4292, Start Num: 14
Candidate Starts for SteveFrench_6:
(Start: 14 @4429 has 26 MA's), (20, 4339),

Gene: Sticker17_4 Start: 3734, Stop: 3609, Start Num: 14
Candidate Starts for Sticker17_4:
(Start: 14 @3734 has 26 MA's), (19, 3662),

Gene: Teal_4 Start: 3711, Stop: 3586, Start Num: 14
Candidate Starts for Teal_4:
(Start: 14 @3711 has 26 MA's), (19, 3639),

Gene: Woes_4 Start: 3750, Stop: 3625, Start Num: 14
Candidate Starts for Woes_4:
(11, 3759), (Start: 14 @3750 has 26 MA's), (19, 3678),

Gene: Worcestershire_6 Start: 4434, Stop: 4291, Start Num: 12
Candidate Starts for Worcestershire_6:
(3, 4539), (5, 4518), (6, 4497), (10, 4440), (Start: 12 @4434 has 26 MA's),