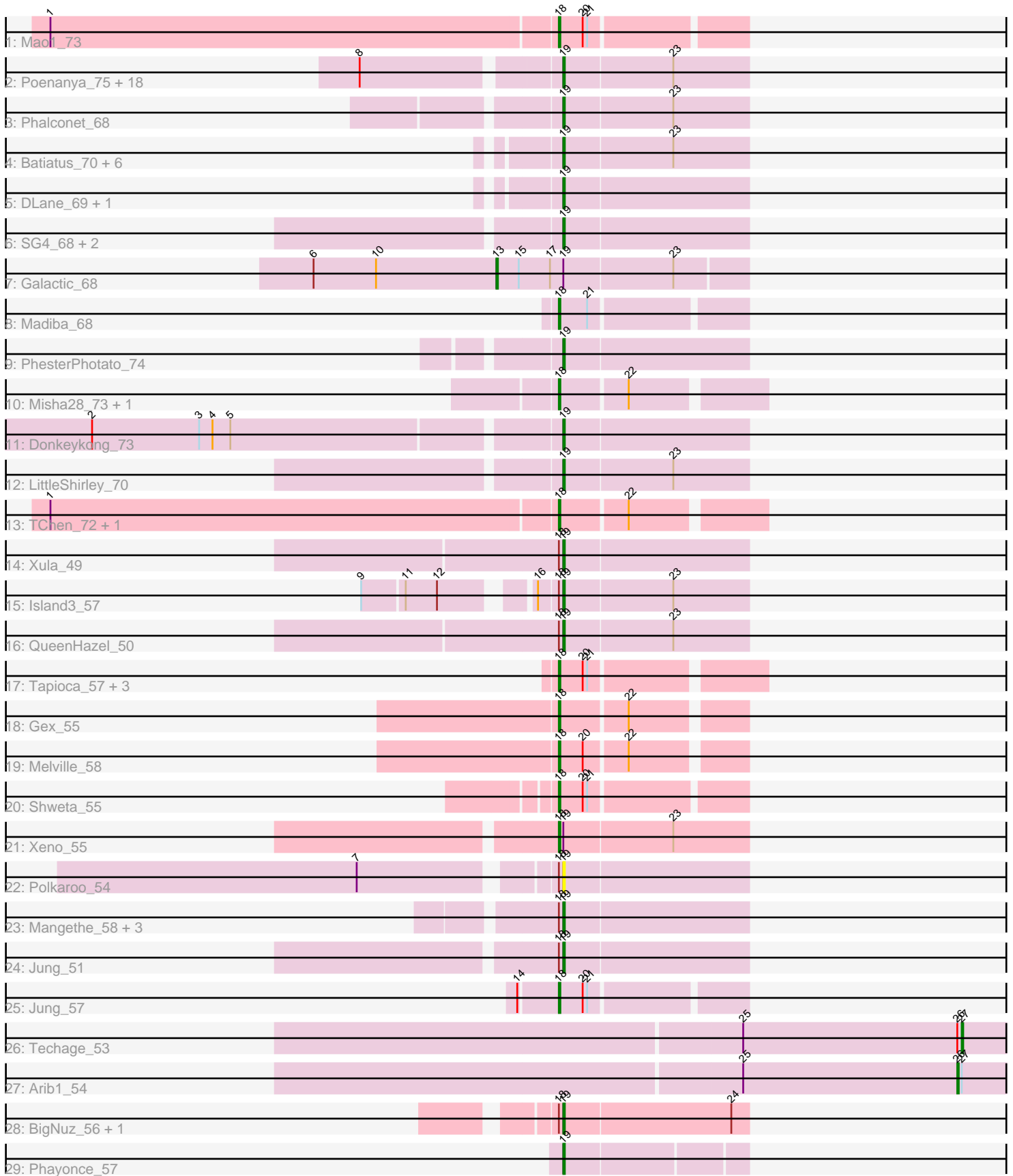


Pham 202931



Note: Tracks are now grouped by subcluster and scaled. Switching in subcluster is indicated by changes in track color. Track scale is now set by default to display the region 30 bp upstream of start 1 to 30 bp downstream of the last possible start. If this default region is judged to be packed too tightly with annotated starts, the track will be further scaled to only show that region of the ORF with annotated starts. This action will be indicated by adding "Zoomed" to the title. For starts, yellow indicates the location of called starts comprised solely of Glimmer/GeneMark auto-annotations, green indicates the location of called starts with at least 1 manual gene annotation.

Pham 202931 Report

This analysis was run 01/18/25 on database version 583.

Pham number 202931 has 65 members, 3 are drafts.

Phages represented in each track:

- Track 1 : Mao1_73
- Track 2 : Poenanya_75, Deb65_65, Nimbo_64, Geralt_65, JoeyJr_72, Daenerys_71, Inventum_70, Empress_70, RedBird_73, RitaG_72, Doomphist_75, Dorothy_73, Scottish_70, Sassafras_73, OldBen_69, Polka14_76, Leperchaun_70, KingMidas_71, PHappiness_72
- Track 3 : Phalconet_68
- Track 4 : Batiatus_70, Kingsley_75, Babsiella_59, Brushbloom_79, Ovechkin_74, Quico_81, Florinda_84
- Track 5 : DLane_69, Ms6_70
- Track 6 : SG4_68, Hegedechwinu_71, StAnnes_69
- Track 7 : Galactic_68
- Track 8 : Madiba_68
- Track 9 : PhesterPhotato_74
- Track 10 : Misha28_73, TootsiePop_73
- Track 11 : Donkeykong_73
- Track 12 : LittleShirley_70
- Track 13 : TChen_72, LunaStella_70
- Track 14 : Xula_49
- Track 15 : Island3_57
- Track 16 : QueenHazel_50
- Track 17 : Tapioca_57, BuzzLyseyear_73, Andies_53, BodEinwohner17_71
- Track 18 : Gex_55
- Track 19 : Melville_58
- Track 20 : Shweta_55
- Track 21 : Xeno_55
- Track 22 : Polkaroo_54
- Track 23 : Mangethe_58, Zilizebeth_58, Majeke_58, Phegasus_58
- Track 24 : Jung_51
- Track 25 : Jung_57
- Track 26 : Techage_53
- Track 27 : Arib1_54
- Track 28 : BigNuz_56, Nazo_57
- Track 29 : Phayonce_57

Summary of Final Annotations (See graph section above for start numbers):

The start number called the most often in the published annotations is 19, it was called in 44 of the 62 non-draft genes in the pham.

Genes that call this "Most Annotated" start:

- Babsiella_59, Batiatus_70, BigNuz_56, Brushbloom_79, DLane_69, Daenerys_71, Deb65_65, Donkeykong_73, Doomphist_75, Dorothy_73, Empress_70, Florinda_84, Geralt_65, Hegedechwinu_71, Inventum_70, Island3_57, JoeyJr_72, Jung_51, KingMidas_71, Kingsley_75, Leperchaun_70, LittleShirley_70, Majeke_58, Mangethe_58, Ms6_70, Nazo_57, Nimbo_64, OldBen_69, Ovechkin_74, PHappiness_72, Phalconet_68, Phayonce_57, Phegasus_58, PhesterPhotato_74, Poenanya_75, Polka14_76, Polkaroo_54, QueenHazel_50, Quico_81, RedBird_73, RitaG_72, SG4_68, Sassafras_73, Scottish_70, StAnnes_69, Xula_49, Zilizebeth_58,

Genes that have the "Most Annotated" start but do not call it:

- Galactic_68, Xeno_55,

Genes that do not have the "Most Annotated" start:

- Andies_53, Arib1_54, BodEinwohner17_71, BuzzLyseyear_73, Gex_55, Jung_57, LunaStella_70, Madiba_68, Mao1_73, Melville_58, Misha28_73, Shweta_55, TChen_72, Tapioca_57, Techage_53, TootsiePop_73,

Summary by start number:

Start 13:

- Found in 1 of 65 (1.5%) of genes in pham
- Manual Annotations of this start: 1 of 62
- Called 100.0% of time when present
- Phage (with cluster) where this start called: Galactic_68 (F1),

Start 18:

- Found in 26 of 65 (40.0%) of genes in pham
- Manual Annotations of this start: 15 of 62
- Called 57.7% of time when present
- Phage (with cluster) where this start called: Andies_53 (N), BodEinwohner17_71 (F1), BuzzLyseyear_73 (F1), Gex_55 (N), Jung_57 (P1), LunaStella_70 (F4), Madiba_68 (F1), Mao1_73 (AD), Melville_58 (N), Misha28_73 (F1), Shweta_55 (N), TChen_72 (F4), Tapioca_57 (N), TootsiePop_73 (F1), Xeno_55 (N),

Start 19:

- Found in 49 of 65 (75.4%) of genes in pham
- Manual Annotations of this start: 44 of 62
- Called 95.9% of time when present
- Phage (with cluster) where this start called: Babsiella_59 (I1), Batiatus_70 (F1), BigNuz_56 (P4), Brushbloom_79 (F1), DLane_69 (F1), Daenerys_71 (F1), Deb65_65 (F1), Donkeykong_73 (F1), Doomphist_75 (F1), Dorothy_73 (F1), Empress_70 (F1), Florinda_84 (F1), Geralt_65 (F1), Hegedechwinu_71 (F1), Inventum_70 (F1), Island3_57 (I1), JoeyJr_72 (F1), Jung_51 (P1), KingMidas_71 (F1), Kingsley_75 (F1), Leperchaun_70 (F1), LittleShirley_70 (F1), Majeke_58 (P1), Mangethe_58 (P1), Ms6_70 (F1), Nazo_57 (P4), Nimbo_64 (F1), OldBen_69 (F1), Ovechkin_74 (F1), PHappiness_72 (F1), Phalconet_68 (F1), Phayonce_57 (P5), Phegasus_58 (P1), PhesterPhotato_74 (F1), Poenanya_75 (F1), Polka14_76 (F1), Polkaroo_54 (P1), QueenHazel_50 (I1), Quico_81 (F1), RedBird_73 (F1), RitaG_72 (F1), SG4_68 (F1),

Sassafras_73 (F1), Scottish_70 (F1), StAnnes_69 (F1), Xula_49 (I1), Zilizebeth_58 (P1),

Start 26:

- Found in 2 of 65 (3.1%) of genes in pham
- Manual Annotations of this start: 1 of 62
- Called 50.0% of time when present
- Phage (with cluster) where this start called: Arib1_54 (P1),

Start 27:

- Found in 2 of 65 (3.1%) of genes in pham
- Manual Annotations of this start: 1 of 62
- Called 50.0% of time when present
- Phage (with cluster) where this start called: Techage_53 (P1),

Summary by clusters:

There are 8 clusters represented in this pham: F1, P1, F4, AD, P4, P5, I1, N,

Info for manual annotations of cluster AD:

- Start number 18 was manually annotated 1 time for cluster AD.

Info for manual annotations of cluster F1:

- Start number 13 was manually annotated 1 time for cluster F1.
- Start number 18 was manually annotated 5 times for cluster F1.
- Start number 19 was manually annotated 32 times for cluster F1.

Info for manual annotations of cluster F4:

- Start number 18 was manually annotated 2 times for cluster F4.

Info for manual annotations of cluster I1:

- Start number 19 was manually annotated 4 times for cluster I1.

Info for manual annotations of cluster N:

- Start number 18 was manually annotated 6 times for cluster N.

Info for manual annotations of cluster P1:

- Start number 18 was manually annotated 1 time for cluster P1.
- Start number 19 was manually annotated 5 times for cluster P1.
- Start number 26 was manually annotated 1 time for cluster P1.
- Start number 27 was manually annotated 1 time for cluster P1.

Info for manual annotations of cluster P4:

- Start number 19 was manually annotated 2 times for cluster P4.

Info for manual annotations of cluster P5:

- Start number 19 was manually annotated 1 time for cluster P5.

Gene Information:

Gene: Andies_53 Start: 38224, Stop: 38349, Start Num: 18

Candidate Starts for Andies_53:
(Start: 18 @38224 has 15 MA's), (20, 38239), (21, 38242),

Gene: Arib1_54 Start: 36196, Stop: 36321, Start Num: 26
Candidate Starts for Arib1_54:
(25, 36052), (Start: 26 @36196 has 1 MA's), (Start: 27 @36199 has 1 MA's),

Gene: Babsiella_59 Start: 39433, Stop: 39555, Start Num: 19
Candidate Starts for Babsiella_59:
(Start: 19 @39433 has 44 MA's), (23, 39505),

Gene: Batiatus_70 Start: 44968, Stop: 45090, Start Num: 19
Candidate Starts for Batiatus_70:
(Start: 19 @44968 has 44 MA's), (23, 45040),

Gene: BigNuz_56 Start: 39756, Stop: 39878, Start Num: 19
Candidate Starts for BigNuz_56:
(Start: 18 @39753 has 15 MA's), (Start: 19 @39756 has 44 MA's), (24, 39867),

Gene: BodEinwohner17_71 Start: 45997, Stop: 46113, Start Num: 18
Candidate Starts for BodEinwohner17_71:
(Start: 18 @45997 has 15 MA's), (20, 46012), (21, 46015),

Gene: Brushbloom_79 Start: 45900, Stop: 46022, Start Num: 19
Candidate Starts for Brushbloom_79:
(Start: 19 @45900 has 44 MA's), (23, 45972),

Gene: BuzzLyseyear_73 Start: 47467, Stop: 47583, Start Num: 18
Candidate Starts for BuzzLyseyear_73:
(Start: 18 @47467 has 15 MA's), (20, 47482), (21, 47485),

Gene: DLane_69 Start: 44902, Stop: 45024, Start Num: 19
Candidate Starts for DLane_69:
(Start: 19 @44902 has 44 MA's),

Gene: Daenerys_71 Start: 46948, Stop: 47070, Start Num: 19
Candidate Starts for Daenerys_71:
(8, 46825), (Start: 19 @46948 has 44 MA's), (23, 47020),

Gene: Deb65_65 Start: 44669, Stop: 44791, Start Num: 19
Candidate Starts for Deb65_65:
(8, 44546), (Start: 19 @44669 has 44 MA's), (23, 44741),

Gene: Donkeykong_73 Start: 46520, Stop: 46642, Start Num: 19
Candidate Starts for Donkeykong_73:
(2, 46217), (3, 46289), (4, 46298), (5, 46310), (Start: 19 @46520 has 44 MA's),

Gene: Doomphist_75 Start: 46761, Stop: 46883, Start Num: 19
Candidate Starts for Doomphist_75:
(8, 46638), (Start: 19 @46761 has 44 MA's), (23, 46833),

Gene: Dorothy_73 Start: 45386, Stop: 45508, Start Num: 19
Candidate Starts for Dorothy_73:

(8, 45263), (Start: 19 @45386 has 44 MA's), (23, 45458),

Gene: Empress_70 Start: 45572, Stop: 45694, Start Num: 19

Candidate Starts for Empress_70:

(8, 45449), (Start: 19 @45572 has 44 MA's), (23, 45644),

Gene: Florinda_84 Start: 47608, Stop: 47730, Start Num: 19

Candidate Starts for Florinda_84:

(Start: 19 @47608 has 44 MA's), (23, 47680),

Gene: Galactic_68 Start: 45071, Stop: 45235, Start Num: 13

Candidate Starts for Galactic_68:

(6, 44948), (10, 44990), (Start: 13 @45071 has 1 MA's), (15, 45086), (17, 45107), (Start: 19 @45116 has 44 MA's), (23, 45188),

Gene: Geralt_65 Start: 44668, Stop: 44790, Start Num: 19

Candidate Starts for Geralt_65:

(8, 44545), (Start: 19 @44668 has 44 MA's), (23, 44740),

Gene: Gex_55 Start: 36173, Stop: 36286, Start Num: 18

Candidate Starts for Gex_55:

(Start: 18 @36173 has 15 MA's), (22, 36215),

Gene: Hegedechwinu_71 Start: 42986, Stop: 43108, Start Num: 19

Candidate Starts for Hegedechwinu_71:

(Start: 19 @42986 has 44 MA's),

Gene: Inventum_70 Start: 45584, Stop: 45706, Start Num: 19

Candidate Starts for Inventum_70:

(8, 45461), (Start: 19 @45584 has 44 MA's), (23, 45656),

Gene: Island3_57 Start: 38289, Stop: 38411, Start Num: 19

Candidate Starts for Island3_57:

(9, 38178), (11, 38205), (12, 38226), (16, 38274), (Start: 18 @38286 has 15 MA's), (Start: 19 @38289 has 44 MA's), (23, 38361),

Gene: JoeyJr_72 Start: 46573, Stop: 46695, Start Num: 19

Candidate Starts for JoeyJr_72:

(8, 46450), (Start: 19 @46573 has 44 MA's), (23, 46645),

Gene: Jung_51 Start: 35878, Stop: 36000, Start Num: 19

Candidate Starts for Jung_51:

(Start: 18 @35875 has 15 MA's), (Start: 19 @35878 has 44 MA's),

Gene: Jung_57 Start: 38107, Stop: 38223, Start Num: 18

Candidate Starts for Jung_57:

(14, 38083), (Start: 18 @38107 has 15 MA's), (20, 38122), (21, 38125),

Gene: KingMidas_71 Start: 45987, Stop: 46109, Start Num: 19

Candidate Starts for KingMidas_71:

(8, 45864), (Start: 19 @45987 has 44 MA's), (23, 46059),

Gene: Kingsley_75 Start: 48363, Stop: 48485, Start Num: 19

Candidate Starts for Kingsley_75:
(Start: 19 @48363 has 44 MA's), (23, 48435),

Gene: Leperchaun_70 Start: 45807, Stop: 45929, Start Num: 19
Candidate Starts for Leperchaun_70:
(8, 45684), (Start: 19 @45807 has 44 MA's), (23, 45879),

Gene: LittleShirley_70 Start: 44567, Stop: 44689, Start Num: 19
Candidate Starts for LittleShirley_70:
(Start: 19 @44567 has 44 MA's), (23, 44639),

Gene: LunaStella_70 Start: 45241, Stop: 45366, Start Num: 18
Candidate Starts for LunaStella_70:
(1, 44905), (Start: 18 @45241 has 15 MA's), (22, 45283),

Gene: Madiba_68 Start: 44600, Stop: 44716, Start Num: 18
Candidate Starts for Madiba_68:
(Start: 18 @44600 has 15 MA's), (21, 44618),

Gene: Majeke_58 Start: 37716, Stop: 37838, Start Num: 19
Candidate Starts for Majeke_58:
(Start: 18 @37713 has 15 MA's), (Start: 19 @37716 has 44 MA's),

Gene: Mangethe_58 Start: 37716, Stop: 37838, Start Num: 19
Candidate Starts for Mangethe_58:
(Start: 18 @37713 has 15 MA's), (Start: 19 @37716 has 44 MA's),

Gene: Mao1_73 Start: 53391, Stop: 53507, Start Num: 18
Candidate Starts for Mao1_73:
(1, 53055), (Start: 18 @53391 has 15 MA's), (20, 53406), (21, 53409),

Gene: Melville_58 Start: 36158, Stop: 36271, Start Num: 18
Candidate Starts for Melville_58:
(Start: 18 @36158 has 15 MA's), (20, 36173), (22, 36200),

Gene: Misha28_73 Start: 45868, Stop: 45993, Start Num: 18
Candidate Starts for Misha28_73:
(Start: 18 @45868 has 15 MA's), (22, 45910),

Gene: Ms6_70 Start: 41131, Stop: 41253, Start Num: 19
Candidate Starts for Ms6_70:
(Start: 19 @41131 has 44 MA's),

Gene: Nazo_57 Start: 39956, Stop: 40078, Start Num: 19
Candidate Starts for Nazo_57:
(Start: 18 @39953 has 15 MA's), (Start: 19 @39956 has 44 MA's), (24, 40067),

Gene: Nimbo_64 Start: 44671, Stop: 44793, Start Num: 19
Candidate Starts for Nimbo_64:
(8, 44548), (Start: 19 @44671 has 44 MA's), (23, 44743),

Gene: OldBen_69 Start: 46063, Stop: 46185, Start Num: 19
Candidate Starts for OldBen_69:

(8, 45940), (Start: 19 @46063 has 44 MA's), (23, 46135),

Gene: Ovechkin_74 Start: 46191, Stop: 46313, Start Num: 19

Candidate Starts for Ovechkin_74:

(Start: 19 @46191 has 44 MA's), (23, 46263),

Gene: PHappiness_72 Start: 46892, Stop: 47014, Start Num: 19

Candidate Starts for PHappiness_72:

(8, 46769), (Start: 19 @46892 has 44 MA's), (23, 46964),

Gene: Phalconet_68 Start: 43304, Stop: 43426, Start Num: 19

Candidate Starts for Phalconet_68:

(Start: 19 @43304 has 44 MA's), (23, 43376),

Gene: Phayonce_57 Start: 40353, Stop: 40469, Start Num: 19

Candidate Starts for Phayonce_57:

(Start: 19 @40353 has 44 MA's),

Gene: Phegasus_58 Start: 37683, Stop: 37805, Start Num: 19

Candidate Starts for Phegasus_58:

(Start: 18 @37680 has 15 MA's), (Start: 19 @37683 has 44 MA's),

Gene: PhesterPhotato_74 Start: 45630, Stop: 45752, Start Num: 19

Candidate Starts for PhesterPhotato_74:

(Start: 19 @45630 has 44 MA's),

Gene: Poenanya_75 Start: 46761, Stop: 46883, Start Num: 19

Candidate Starts for Poenanya_75:

(8, 46638), (Start: 19 @46761 has 44 MA's), (23, 46833),

Gene: Polka14_76 Start: 47551, Stop: 47673, Start Num: 19

Candidate Starts for Polka14_76:

(8, 47428), (Start: 19 @47551 has 44 MA's), (23, 47623),

Gene: Polkaroo_54 Start: 37256, Stop: 37378, Start Num: 19

Candidate Starts for Polkaroo_54:

(7, 37136), (Start: 18 @37253 has 15 MA's), (Start: 19 @37256 has 44 MA's),

Gene: QueenHazel_50 Start: 36087, Stop: 36209, Start Num: 19

Candidate Starts for QueenHazel_50:

(Start: 18 @36084 has 15 MA's), (Start: 19 @36087 has 44 MA's), (23, 36159),

Gene: Quico_81 Start: 47428, Stop: 47550, Start Num: 19

Candidate Starts for Quico_81:

(Start: 19 @47428 has 44 MA's), (23, 47500),

Gene: RedBird_73 Start: 45253, Stop: 45375, Start Num: 19

Candidate Starts for RedBird_73:

(8, 45130), (Start: 19 @45253 has 44 MA's), (23, 45325),

Gene: RitaG_72 Start: 46694, Stop: 46816, Start Num: 19

Candidate Starts for RitaG_72:

(8, 46571), (Start: 19 @46694 has 44 MA's), (23, 46766),

Gene: SG4_68 Start: 43359, Stop: 43481, Start Num: 19
Candidate Starts for SG4_68:
(Start: 19 @43359 has 44 MA's),

Gene: Sassafras_73 Start: 45583, Stop: 45705, Start Num: 19
Candidate Starts for Sassafras_73:
(8, 45460), (Start: 19 @45583 has 44 MA's), (23, 45655),

Gene: Scottish_70 Start: 45242, Stop: 45364, Start Num: 19
Candidate Starts for Scottish_70:
(8, 45119), (Start: 19 @45242 has 44 MA's), (23, 45314),

Gene: Shweta_55 Start: 36817, Stop: 36933, Start Num: 18
Candidate Starts for Shweta_55:
(Start: 18 @36817 has 15 MA's), (20, 36832), (21, 36835),

Gene: StAnnes_69 Start: 44436, Stop: 44558, Start Num: 19
Candidate Starts for StAnnes_69:
(Start: 19 @44436 has 44 MA's),

Gene: TChen_72 Start: 47192, Stop: 47317, Start Num: 18
Candidate Starts for TChen_72:
(1, 46856), (Start: 18 @47192 has 15 MA's), (22, 47234),

Gene: Tapioca_57 Start: 38663, Stop: 38788, Start Num: 18
Candidate Starts for Tapioca_57:
(Start: 18 @38663 has 15 MA's), (20, 38678), (21, 38681),

Gene: Techage_53 Start: 36249, Stop: 36371, Start Num: 27
Candidate Starts for Techage_53:
(25, 36102), (Start: 26 @36246 has 1 MA's), (Start: 27 @36249 has 1 MA's),

Gene: TootsiePop_73 Start: 45868, Stop: 45993, Start Num: 18
Candidate Starts for TootsiePop_73:
(Start: 18 @45868 has 15 MA's), (22, 45910),

Gene: Xeno_55 Start: 35530, Stop: 35655, Start Num: 18
Candidate Starts for Xeno_55:
(Start: 18 @35530 has 15 MA's), (Start: 19 @35533 has 44 MA's), (23, 35605),

Gene: Xula_49 Start: 35689, Stop: 35811, Start Num: 19
Candidate Starts for Xula_49:
(Start: 18 @35686 has 15 MA's), (Start: 19 @35689 has 44 MA's),

Gene: Zilizabeth_58 Start: 37707, Stop: 37829, Start Num: 19
Candidate Starts for Zilizabeth_58:
(Start: 18 @37704 has 15 MA's), (Start: 19 @37707 has 44 MA's),