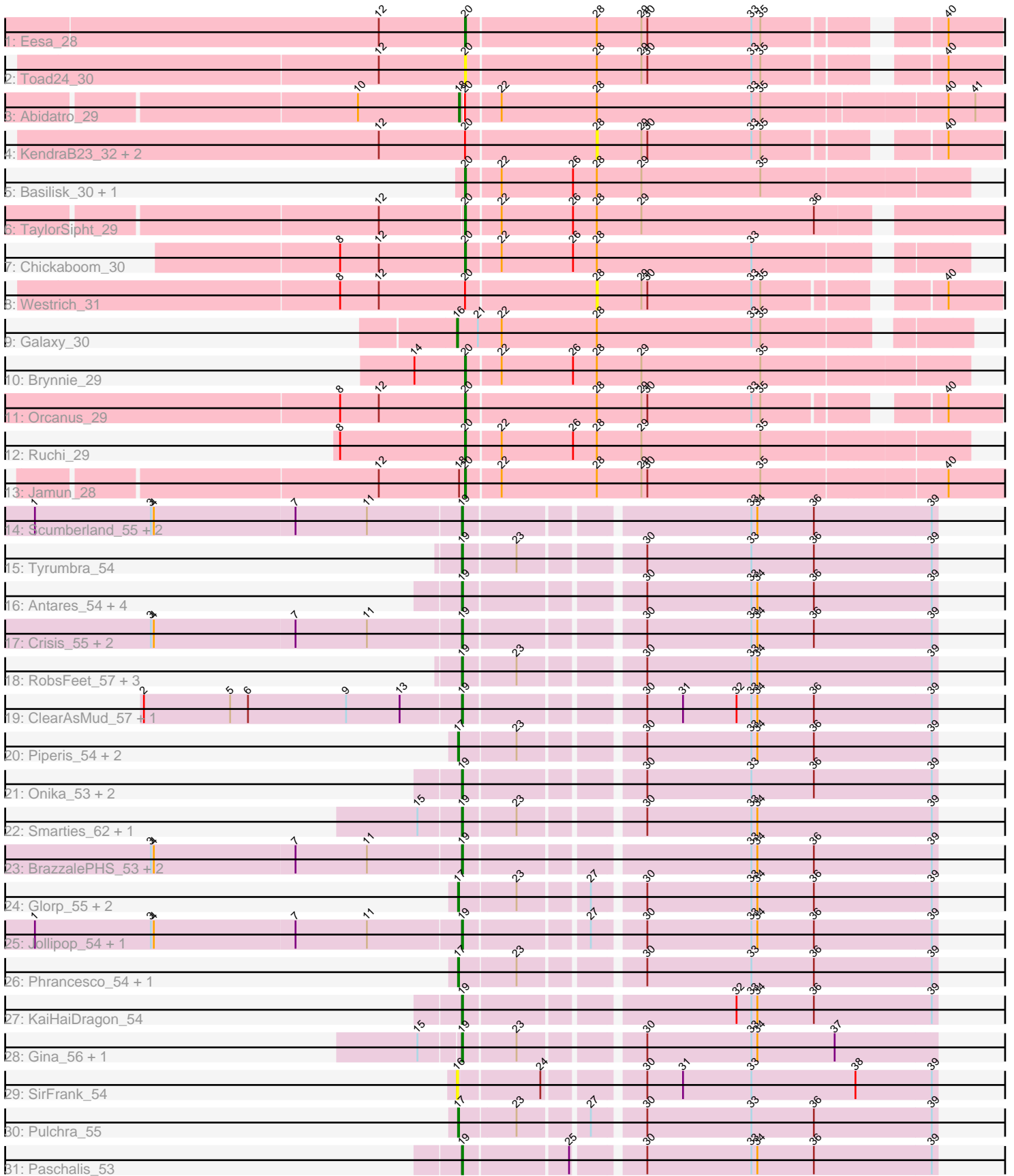


Pham 202972



Note: Tracks are now grouped by subcluster and scaled. Switching in subcluster is indicated by changes in track color. Track scale is now set by default to display the region 30 bp upstream of start 1 to 30 bp downstream of the last possible start. If this default region is judged to be packed too tightly with annotated starts, the track will be further scaled to only show that region of the ORF with annotated starts. This action will be indicated by adding "Zoomed" to the title. For starts, yellow indicates the location of called starts comprised solely of Glimmer/GeneMark auto-annotations, green indicates the location of called starts with at least 1 manual gene annotation.

Pham 202972 Report

This analysis was run 01/18/25 on database version 583.

Pham number 202972 has 58 members, 10 are drafts.

Phages represented in each track:

- Track 1 : Eesa_28
- Track 2 : Toad24_30
- Track 3 : Abidatro_29
- Track 4 : KendraB23_32, Gravel_31, Pelletreau_31
- Track 5 : Basilisk_30, Vulpecula_29
- Track 6 : TaylorSipht_29
- Track 7 : Chickaboom_30
- Track 8 : Westrich_31
- Track 9 : Galaxy_30
- Track 10 : Brynnie_29
- Track 11 : Orcanus_29
- Track 12 : Ruchi_29
- Track 13 : Jamun_28
- Track 14 : Scumberland_55, Cranjis_55, LittleFortune_55
- Track 15 : Tyumbra_54
- Track 16 : Antares_54, Quhwah_57, Shotgun_53, Savannah_53, PhedwardCullen_52
- Track 17 : Crisis_55, CrazyRich_53, Jefe_54
- Track 18 : RobsFeet_57, Metamorphoo_56, Fireman_56, Shrubaron_56
- Track 19 : ClearAsMud_57, NoodlelyBoi_55
- Track 20 : Piperis_54, Ganandorf_53, Phorgeous_53
- Track 21 : Onika_53, PiperSansNom_54, Hermeonysus_53
- Track 22 : Smarties_62, Ariadne_62
- Track 23 : BrazzalePHS_53, Ramiel05_53, Kowalski_53
- Track 24 : Glorp_55, Honeyfin_55, Yeti_54
- Track 25 : Jollipop_54, PierreOrion_54
- Track 26 : Phrancesco_54, Busephilis_53
- Track 27 : KaiHaiDragon_54
- Track 28 : Gina_56, Teamocil_56
- Track 29 : SirFrank_54
- Track 30 : Pulchra_55
- Track 31 : Paschalis_53

Summary of Final Annotations (See graph section above for start numbers):

The start number called the most often in the published annotations is 19, it was called in 29 of the 48 non-draft genes in the pham.

Genes that call this "Most Annotated" start:

- Antares_54, Ariadne_62, BrazzalePHS_53, ClearAsMud_57, Cranjjs_55, CrazyRich_53, Crisis_55, Fireman_56, Gina_56, Hermeonysus_53, Jefe_54, Jollipop_54, KaiHaiDragon_54, Kowalski_53, LittleFortune_55, Metamorphoo_56, NoodlelyBoi_55, Onika_53, Paschalis_53, PhedwardCullen_52, PierreOrion_54, PiperSansNom_54, Quhwah_57, Ramiel05_53, RobsFeet_57, Savannah_53, Scumberland_55, Shotgun_53, Shrubaron_56, Smarties_62, Teamocil_56, Tyrumbra_54,

Genes that have the "Most Annotated" start but do not call it:

-

Genes that do not have the "Most Annotated" start:

- Abidatro_29, Basilisk_30, Brynnie_29, Busephilis_53, Chickaboom_30, Eesa_28, Galaxy_30, Ganandorf_53, Glorp_55, Gravel_31, Honeyfin_55, Jamun_28, KendraB23_32, Orcanus_29, Pelletreau_31, Phorgeous_53, Phrancesco_54, Piperis_54, Pulchra_55, Ruchi_29, SirFrank_54, TaylorSipht_29, Toad24_30, Vulpecula_29, Westrich_31, Yeti_54,

Summary by start number:

Start 16:

- Found in 2 of 58 (3.4%) of genes in pham
- Manual Annotations of this start: 1 of 48
- Called 100.0% of time when present
- Phage (with cluster) where this start called: Galaxy_30 (AS1), SirFrank_54 (EC),

Start 17:

- Found in 9 of 58 (15.5%) of genes in pham
- Manual Annotations of this start: 8 of 48
- Called 100.0% of time when present
- Phage (with cluster) where this start called: Busephilis_53 (EC), Ganandorf_53 (EC), Glorp_55 (EC), Honeyfin_55 (EC), Phorgeous_53 (EC), Phrancesco_54 (EC), Piperis_54 (EC), Pulchra_55 (EC), Yeti_54 (EC),

Start 18:

- Found in 2 of 58 (3.4%) of genes in pham
- Manual Annotations of this start: 1 of 48
- Called 50.0% of time when present
- Phage (with cluster) where this start called: Abidatro_29 (AS1),

Start 19:

- Found in 32 of 58 (55.2%) of genes in pham
- Manual Annotations of this start: 29 of 48
- Called 100.0% of time when present
- Phage (with cluster) where this start called: Antares_54 (EC), Ariadne_62 (EC), BrazzalePHS_53 (EC), ClearAsMud_57 (EC), Cranjjs_55 (EC), CrazyRich_53 (EC), Crisis_55 (EC), Fireman_56 (EC), Gina_56 (EC), Hermeonysus_53 (EC), Jefe_54 (EC), Jollipop_54 (EC), KaiHaiDragon_54 (EC), Kowalski_53 (EC), LittleFortune_55

(EC), Metamorphoo_56 (EC), NoodlelyBoi_55 (EC), Onika_53 (EC), Paschalis_53 (EC), PhedwardCullen_52 (EC), PierreOrion_54 (EC), PiperSansNom_54 (EC), Quhwah_57 (EC), Ramiel05_53 (EC), RobsFeet_57 (EC), Savannah_53 (EC), Scumberland_55 (EC), Shotgun_53 (EC), Shrubaron_56 (EC), Smarties_62 (EC), Teamocil_56 (EC), Tyrumbra_54 (EC),

Start 20:

- Found in 15 of 58 (25.9%) of genes in pham
- Manual Annotations of this start: 9 of 48
- Called 66.7% of time when present
- Phage (with cluster) where this start called: Basilisk_30 (AS1), Brynnie_29 (AS1), Chickaboom_30 (AS1), Eesa_28 (AS1), Jamun_28 (AS1), Orcanus_29 (AS1), Ruchi_29 (AS1), TaylorSipht_29 (AS1), Toad24_30 (AS1), Vulpecula_29 (AS1),

Start 28:

- Found in 16 of 58 (27.6%) of genes in pham
- No Manual Annotations of this start.
- Called 25.0% of time when present
- Phage (with cluster) where this start called: Gravel_31 (AS1), KendraB23_32 (AS1), Pelletreau_31 (AS1), Westrich_31 (AS1),

Summary by clusters:

There are 2 clusters represented in this pham: AS1, EC,

Info for manual annotations of cluster AS1:

- Start number 16 was manually annotated 1 time for cluster AS1.
- Start number 18 was manually annotated 1 time for cluster AS1.
- Start number 20 was manually annotated 9 times for cluster AS1.

Info for manual annotations of cluster EC:

- Start number 17 was manually annotated 8 times for cluster EC.
- Start number 19 was manually annotated 29 times for cluster EC.

Gene Information:

Gene: Abidatro_29 Start: 21393, Stop: 20860, Start Num: 18

Candidate Starts for Abidatro_29:

(10, 21495), (Start: 18 @21393 has 1 MA's), (Start: 20 @21390 has 9 MA's), (22, 21357), (28, 21261), (33, 21105), (35, 21096), (40, 20922), (41, 20895),

Gene: Antares_54 Start: 35918, Stop: 36367, Start Num: 19

Candidate Starts for Antares_54:

(Start: 19 @35918 has 29 MA's), (30, 36077), (33, 36182), (34, 36188), (36, 36245), (39, 36362),

Gene: Ariadne_62 Start: 37502, Stop: 37951, Start Num: 19

Candidate Starts for Ariadne_62:

(15, 37460), (Start: 19 @37502 has 29 MA's), (23, 37553), (30, 37661), (33, 37766), (34, 37772), (39, 37946),

Gene: Basilisk_30 Start: 22338, Stop: 21847, Start Num: 20

Candidate Starts for Basilisk_30:

(Start: 20 @22338 has 9 MA's), (22, 22305), (26, 22233), (28, 22209), (29, 22164), (35, 22044),

Gene: BrazzalePHS_53 Start: 35714, Stop: 36163, Start Num: 19

Candidate Starts for BrazzalePHS_53:

(3, 35405), (4, 35408), (7, 35549), (11, 35621), (Start: 19 @35714 has 29 MA's), (33, 35978), (34, 35984), (36, 36041), (39, 36158),

Gene: Brynnie_29 Start: 22216, Stop: 21725, Start Num: 20

Candidate Starts for Brynnie_29:

(14, 22267), (Start: 20 @22216 has 9 MA's), (22, 22183), (26, 22111), (28, 22087), (29, 22042), (35, 21922),

Gene: Busephilis_53 Start: 35622, Stop: 36074, Start Num: 17

Candidate Starts for Busephilis_53:

(Start: 17 @35622 has 8 MA's), (23, 35676), (30, 35784), (33, 35889), (36, 35952), (39, 36069),

Gene: Chickaboom_30 Start: 21353, Stop: 20883, Start Num: 20

Candidate Starts for Chickaboom_30:

(8, 21479), (12, 21440), (Start: 20 @21353 has 9 MA's), (22, 21320), (26, 21248), (28, 21224), (33, 21068),

Gene: ClearAsMud_57 Start: 36175, Stop: 36624, Start Num: 19

Candidate Starts for ClearAsMud_57:

(2, 35857), (5, 35944), (6, 35962), (9, 36061), (13, 36115), (Start: 19 @36175 has 29 MA's), (30, 36334), (31, 36370), (32, 36424), (33, 36439), (34, 36445), (36, 36502), (39, 36619),

Gene: Cranjis_55 Start: 35873, Stop: 36322, Start Num: 19

Candidate Starts for Cranjis_55:

(1, 35447), (3, 35564), (4, 35567), (7, 35708), (11, 35780), (Start: 19 @35873 has 29 MA's), (33, 36137), (34, 36143), (36, 36200), (39, 36317),

Gene: CrazyRich_53 Start: 35682, Stop: 36131, Start Num: 19

Candidate Starts for CrazyRich_53:

(3, 35373), (4, 35376), (7, 35517), (11, 35589), (Start: 19 @35682 has 29 MA's), (30, 35841), (33, 35946), (34, 35952), (36, 36009), (39, 36126),

Gene: Crisis_55 Start: 35673, Stop: 36122, Start Num: 19

Candidate Starts for Crisis_55:

(3, 35364), (4, 35367), (7, 35508), (11, 35580), (Start: 19 @35673 has 29 MA's), (30, 35832), (33, 35937), (34, 35943), (36, 36000), (39, 36117),

Gene: Eesa_28 Start: 22106, Stop: 21612, Start Num: 20

Candidate Starts for Eesa_28:

(12, 22193), (Start: 20 @22106 has 9 MA's), (28, 21977), (29, 21932), (30, 21926), (33, 21821), (35, 21812), (40, 21665),

Gene: Fireman_56 Start: 37569, Stop: 38018, Start Num: 19

Candidate Starts for Fireman_56:

(Start: 19 @37569 has 29 MA's), (23, 37620), (30, 37728), (33, 37833), (34, 37839), (39, 38013),

Gene: Galaxy_30 Start: 21976, Stop: 21491, Start Num: 16

Candidate Starts for Galaxy_30:

(Start: 16 @21976 has 1 MA's), (21, 21955), (22, 21931), (28, 21835), (33, 21679), (35, 21670),

Gene: Ganandorf_53 Start: 35703, Stop: 36155, Start Num: 17

Candidate Starts for Ganandorf_53:

(Start: 17 @35703 has 8 MA's), (23, 35757), (30, 35865), (33, 35970), (34, 35976), (36, 36033), (39, 36150),

Gene: Gina_56 Start: 35677, Stop: 36126, Start Num: 19

Candidate Starts for Gina_56:

(15, 35638), (Start: 19 @35677 has 29 MA's), (23, 35728), (30, 35836), (33, 35941), (34, 35947), (37, 36025),

Gene: Glorp_55 Start: 35704, Stop: 36156, Start Num: 17

Candidate Starts for Glorp_55:

(Start: 17 @35704 has 8 MA's), (23, 35758), (27, 35821), (30, 35866), (33, 35971), (34, 35977), (36, 36034), (39, 36151),

Gene: Gravel_31 Start: 21946, Stop: 21581, Start Num: 28

Candidate Starts for Gravel_31:

(12, 22162), (Start: 20 @22075 has 9 MA's), (28, 21946), (29, 21901), (30, 21895), (33, 21790), (35, 21781), (40, 21634),

Gene: Hermeonysus_53 Start: 35602, Stop: 36051, Start Num: 19

Candidate Starts for Hermeonysus_53:

(Start: 19 @35602 has 29 MA's), (30, 35761), (33, 35866), (36, 35929), (39, 36046),

Gene: Honeyfin_55 Start: 35891, Stop: 36343, Start Num: 17

Candidate Starts for Honeyfin_55:

(Start: 17 @35891 has 8 MA's), (23, 35945), (27, 36008), (30, 36053), (33, 36158), (34, 36164), (36, 36221), (39, 36338),

Gene: Jamun_28 Start: 21237, Stop: 20692, Start Num: 20

Candidate Starts for Jamun_28:

(12, 21321), (Start: 18 @21240 has 1 MA's), (Start: 20 @21237 has 9 MA's), (22, 21204), (28, 21108), (29, 21063), (30, 21057), (35, 20943), (40, 20766),

Gene: Jefe_54 Start: 35660, Stop: 36109, Start Num: 19

Candidate Starts for Jefe_54:

(3, 35351), (4, 35354), (7, 35495), (11, 35567), (Start: 19 @35660 has 29 MA's), (30, 35819), (33, 35924), (34, 35930), (36, 35987), (39, 36104),

Gene: Jollipop_54 Start: 35999, Stop: 36448, Start Num: 19

Candidate Starts for Jollipop_54:

(1, 35573), (3, 35690), (4, 35693), (7, 35834), (11, 35906), (Start: 19 @35999 has 29 MA's), (27, 36113), (30, 36158), (33, 36263), (34, 36269), (36, 36326), (39, 36443),

Gene: KaiHaiDragon_54 Start: 35596, Stop: 36045, Start Num: 19

Candidate Starts for KaiHaiDragon_54:

(Start: 19 @35596 has 29 MA's), (32, 35845), (33, 35860), (34, 35866), (36, 35923), (39, 36040),

Gene: KendraB23_32 Start: 22134, Stop: 21769, Start Num: 28

Candidate Starts for KendraB23_32:

(12, 22350), (Start: 20 @22263 has 9 MA's), (28, 22134), (29, 22089), (30, 22083), (33, 21978), (35, 21969), (40, 21822),

Gene: Kowalski_53 Start: 35709, Stop: 36158, Start Num: 19

Candidate Starts for Kowalski_53:

(3, 35400), (4, 35403), (7, 35544), (11, 35616), (Start: 19 @35709 has 29 MA's), (33, 35973), (34, 35979), (36, 36036), (39, 36153),

Gene: LittleFortune_55 Start: 35965, Stop: 36414, Start Num: 19

Candidate Starts for LittleFortune_55:

(1, 35539), (3, 35656), (4, 35659), (7, 35800), (11, 35872), (Start: 19 @35965 has 29 MA's), (33, 36229), (34, 36235), (36, 36292), (39, 36409),

Gene: Metamorphoo_56 Start: 36831, Stop: 37280, Start Num: 19

Candidate Starts for Metamorphoo_56:

(Start: 19 @36831 has 29 MA's), (23, 36882), (30, 36990), (33, 37095), (34, 37101), (39, 37275),

Gene: NoodlelyBoi_55 Start: 36387, Stop: 36836, Start Num: 19

Candidate Starts for NoodlelyBoi_55:

(2, 36069), (5, 36156), (6, 36174), (9, 36273), (13, 36327), (Start: 19 @36387 has 29 MA's), (30, 36546), (31, 36582), (32, 36636), (33, 36651), (34, 36657), (36, 36714), (39, 36831),

Gene: Onika_53 Start: 35684, Stop: 36133, Start Num: 19

Candidate Starts for Onika_53:

(Start: 19 @35684 has 29 MA's), (30, 35843), (33, 35948), (36, 36011), (39, 36128),

Gene: Orcanus_29 Start: 21876, Stop: 21382, Start Num: 20

Candidate Starts for Orcanus_29:

(8, 22002), (12, 21963), (Start: 20 @21876 has 9 MA's), (28, 21747), (29, 21702), (30, 21696), (33, 21591), (35, 21582), (40, 21435),

Gene: Paschalis_53 Start: 35691, Stop: 36140, Start Num: 19

Candidate Starts for Paschalis_53:

(Start: 19 @35691 has 29 MA's), (25, 35790), (30, 35850), (33, 35955), (34, 35961), (36, 36018), (39, 36135),

Gene: Pelletreau_31 Start: 21946, Stop: 21581, Start Num: 28

Candidate Starts for Pelletreau_31:

(12, 22162), (Start: 20 @22075 has 9 MA's), (28, 21946), (29, 21901), (30, 21895), (33, 21790), (35, 21781), (40, 21634),

Gene: PhedwardCullen_52 Start: 35442, Stop: 35891, Start Num: 19

Candidate Starts for PhedwardCullen_52:

(Start: 19 @35442 has 29 MA's), (30, 35601), (33, 35706), (34, 35712), (36, 35769), (39, 35886),

Gene: Phorgeous_53 Start: 35522, Stop: 35974, Start Num: 17

Candidate Starts for Phorgeous_53:

(Start: 17 @35522 has 8 MA's), (23, 35576), (30, 35684), (33, 35789), (34, 35795), (36, 35852), (39, 35969),

Gene: Phrancesco_54 Start: 35812, Stop: 36264, Start Num: 17

Candidate Starts for Phrancesco_54:

(Start: 17 @35812 has 8 MA's), (23, 35866), (30, 35974), (33, 36079), (36, 36142), (39, 36259),

Gene: PierreOrion_54 Start: 35858, Stop: 36307, Start Num: 19

Candidate Starts for PierreOrion_54:

(1, 35432), (3, 35549), (4, 35552), (7, 35693), (11, 35765), (Start: 19 @35858 has 29 MA's), (27, 35972), (30, 36017), (33, 36122), (34, 36128), (36, 36185), (39, 36302),

Gene: PiperSansNom_54 Start: 35998, Stop: 36447, Start Num: 19

Candidate Starts for PiperSansNom_54:

(Start: 19 @35998 has 29 MA's), (30, 36157), (33, 36262), (36, 36325), (39, 36442),

Gene: Piperis_54 Start: 35645, Stop: 36097, Start Num: 17

Candidate Starts for Piperis_54:

(Start: 17 @35645 has 8 MA's), (23, 35699), (30, 35807), (33, 35912), (34, 35918), (36, 35975), (39, 36092),

Gene: Pulchra_55 Start: 36042, Stop: 36494, Start Num: 17

Candidate Starts for Pulchra_55:

(Start: 17 @36042 has 8 MA's), (23, 36096), (27, 36159), (30, 36204), (33, 36309), (36, 36372), (39, 36489),

Gene: Quhwah_57 Start: 36306, Stop: 36755, Start Num: 19

Candidate Starts for Quhwah_57:

(Start: 19 @36306 has 29 MA's), (30, 36465), (33, 36570), (34, 36576), (36, 36633), (39, 36750),

Gene: Ramiel05_53 Start: 35709, Stop: 36158, Start Num: 19

Candidate Starts for Ramiel05_53:

(3, 35400), (4, 35403), (7, 35544), (11, 35616), (Start: 19 @35709 has 29 MA's), (33, 35973), (34, 35979), (36, 36036), (39, 36153),

Gene: RobsFeet_57 Start: 37130, Stop: 37579, Start Num: 19

Candidate Starts for RobsFeet_57:

(Start: 19 @37130 has 29 MA's), (23, 37181), (30, 37289), (33, 37394), (34, 37400), (39, 37574),

Gene: Ruchi_29 Start: 22284, Stop: 21793, Start Num: 20

Candidate Starts for Ruchi_29:

(8, 22410), (Start: 20 @22284 has 9 MA's), (22, 22251), (26, 22179), (28, 22155), (29, 22110), (35, 21990),

Gene: Savannah_53 Start: 35736, Stop: 36185, Start Num: 19

Candidate Starts for Savannah_53:

(Start: 19 @35736 has 29 MA's), (30, 35895), (33, 36000), (34, 36006), (36, 36063), (39, 36180),

Gene: Scumberland_55 Start: 35931, Stop: 36380, Start Num: 19

Candidate Starts for Scumberland_55:

(1, 35505), (3, 35622), (4, 35625), (7, 35766), (11, 35838), (Start: 19 @35931 has 29 MA's), (33, 36195), (34, 36201), (36, 36258), (39, 36375),

Gene: Shotgun_53 Start: 35535, Stop: 35984, Start Num: 19

Candidate Starts for Shotgun_53:

(Start: 19 @35535 has 29 MA's), (30, 35694), (33, 35799), (34, 35805), (36, 35862), (39, 35979),

Gene: Shrubaron_56 Start: 36743, Stop: 37192, Start Num: 19

Candidate Starts for Shrubaron_56:

(Start: 19 @36743 has 29 MA's), (23, 36794), (30, 36902), (33, 37007), (34, 37013), (39, 37187),

Gene: SirFrank_54 Start: 35866, Stop: 36318, Start Num: 16

Candidate Starts for SirFrank_54:

(Start: 16 @35866 has 1 MA's), (24, 35944), (30, 36028), (31, 36064), (33, 36133), (38, 36238), (39, 36313),

Gene: Smarties_62 Start: 37502, Stop: 37951, Start Num: 19

Candidate Starts for Smarties_62:

(15, 37460), (Start: 19 @37502 has 29 MA's), (23, 37553), (30, 37661), (33, 37766), (34, 37772), (39, 37946),

Gene: TaylorSipht_29 Start: 21289, Stop: 20720, Start Num: 20

Candidate Starts for TaylorSipht_29:

(12, 21373), (Start: 20 @21289 has 9 MA's), (22, 21256), (26, 21184), (28, 21160), (29, 21115), (36, 20941),

Gene: Teamocil_56 Start: 35776, Stop: 36225, Start Num: 19

Candidate Starts for Teamocil_56:

(15, 35737), (Start: 19 @35776 has 29 MA's), (23, 35827), (30, 35935), (33, 36040), (34, 36046), (37, 36124),

Gene: Toad24_30 Start: 22325, Stop: 21831, Start Num: 20

Candidate Starts for Toad24_30:

(12, 22412), (Start: 20 @22325 has 9 MA's), (28, 22196), (29, 22151), (30, 22145), (33, 22040), (35, 22031), (40, 21884),

Gene: Tyrumbra_54 Start: 36909, Stop: 37358, Start Num: 19

Candidate Starts for Tyrumbra_54:

(Start: 19 @36909 has 29 MA's), (23, 36960), (30, 37068), (33, 37173), (36, 37236), (39, 37353),

Gene: Vulpecula_29 Start: 21960, Stop: 21436, Start Num: 20

Candidate Starts for Vulpecula_29:

(Start: 20 @21960 has 9 MA's), (22, 21927), (26, 21855), (28, 21831), (29, 21786), (35, 21666),

Gene: Westrich_31 Start: 21873, Stop: 21508, Start Num: 28

Candidate Starts for Westrich_31:

(8, 22128), (12, 22089), (Start: 20 @22002 has 9 MA's), (28, 21873), (29, 21828), (30, 21822), (33, 21717), (35, 21708), (40, 21561),

Gene: Yeti_54 Start: 35678, Stop: 36130, Start Num: 17

Candidate Starts for Yeti_54:

(Start: 17 @35678 has 8 MA's), (23, 35732), (27, 35795), (30, 35840), (33, 35945), (34, 35951), (36, 36008), (39, 36125),