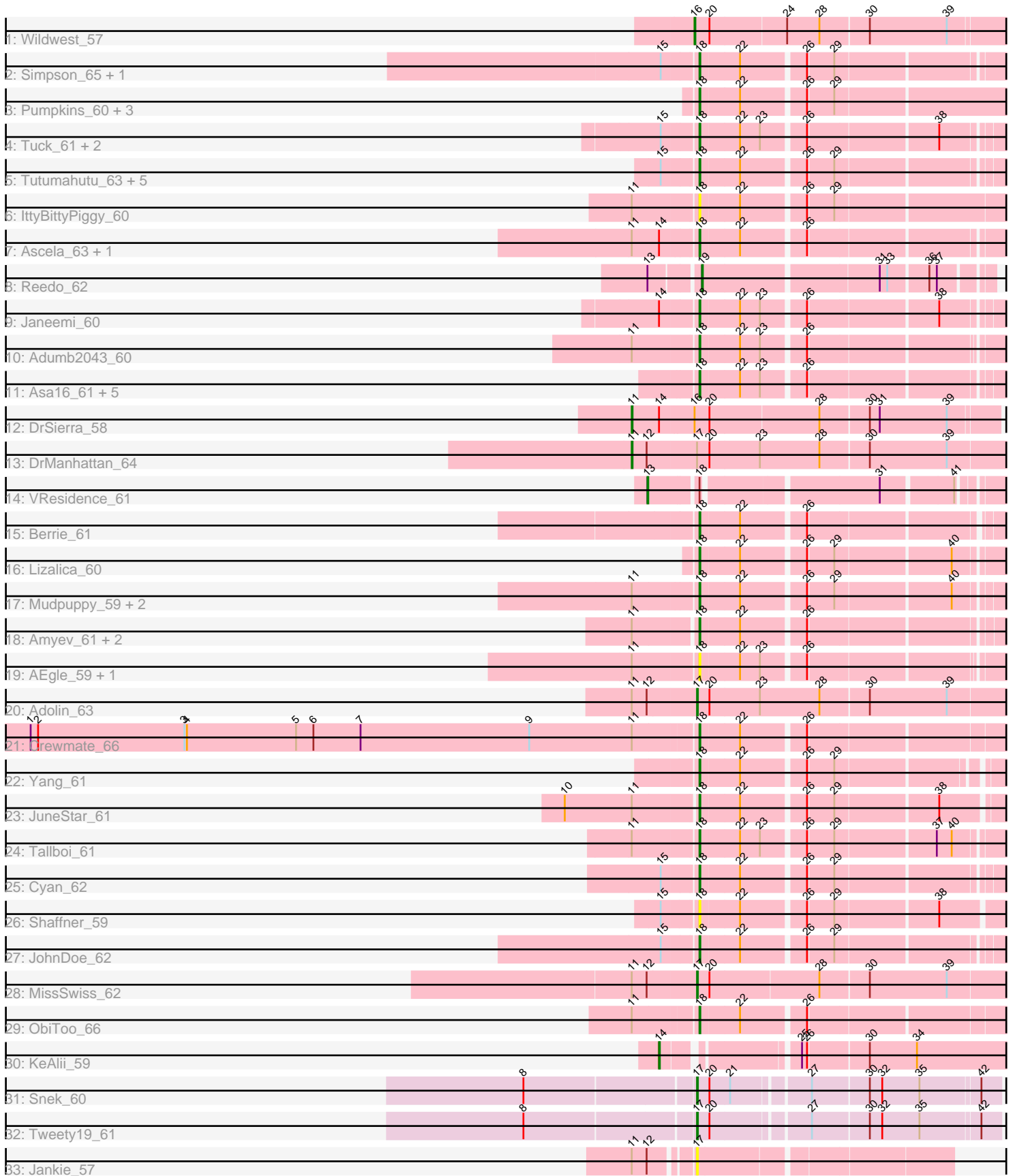


Pham 202984



Note: Tracks are now grouped by subcluster and scaled. Switching in subcluster is indicated by changes in track color. Track scale is now set by default to display the region 30 bp upstream of start 1 to 30 bp downstream of the last possible start. If this default region is judged to be packed too tightly with annotated starts, the track will be further scaled to only show that region of the ORF with annotated starts. This action will be indicated by adding "Zoomed" to the title. For starts, yellow indicates the location of called starts comprised solely of Glimmer/GeneMark auto-annotations, green indicates the location of called starts with at least 1 manual gene annotation.

Pham 202984 Report

This analysis was run 01/18/25 on database version 583.

Pham number 202984 has 55 members, 10 are drafts.

Phages represented in each track:

- Track 1 : Wildwest_57
- Track 2 : Simpson_65, Joemato_62
- Track 3 : Pumpkins_60, Cassia_61, TforTroy_62, Nitro_62
- Track 4 : Tuck_61, Phives_62, Community_61
- Track 5 : Tutumahutu_63, Powerpuff_63, YesChef_61, Lego_61, AGrandiflora_63, Kaylissa_63
- Track 6 : IttyBittyPiggy_60
- Track 7 : Ascela_63, Iter_62
- Track 8 : Reedo_62
- Track 9 : Janeemi_60
- Track 10 : Adumb2043_60
- Track 11 : Asa16_61, Eraser_61, London_61, Niobe_61, Jstan_62, Elezi_60
- Track 12 : DrSierra_58
- Track 13 : DrManhattan_64
- Track 14 : VResidence_61
- Track 15 : Berrie_61
- Track 16 : Lizalica_60
- Track 17 : Mudpuppy_59, Warda_62, Tbone_61
- Track 18 : Amyev_61, Tian_60, Pixelle_61
- Track 19 : AEgle_59, Turab_60
- Track 20 : Adolin_63
- Track 21 : Crewmate_66
- Track 22 : Yang_61
- Track 23 : JuneStar_61
- Track 24 : Tallboi_61
- Track 25 : Cyan_62
- Track 26 : Shaffner_59
- Track 27 : JohnDoe_62
- Track 28 : MissSwiss_62
- Track 29 : ObiToo_66
- Track 30 : KeAlii_59
- Track 31 : Snek_60
- Track 32 : Tweety19_61
- Track 33 : Jankie_57

Summary of Final Annotations (See graph section above for start numbers):

The start number called the most often in the published annotations is 18, it was called in 35 of the 45 non-draft genes in the pham.

Genes that call this "Most Annotated" start:

- AEgle_59, AGrandiflora_63, Adumb2043_60, Amyev_61, Asa16_61, Ascela_63, Berrie_61, Cassia_61, Community_61, Crewmate_66, Cyan_62, Elezi_60, Eraser_61, Iter_62, IttyBittyPiggy_60, Janeemi_60, Joemato_62, JohnDoe_62, Jstan_62, JuneStar_61, Kaylissa_63, Lego_61, Lizalica_60, London_61, Mudpuppy_59, Niobe_61, Nitro_62, ObiToo_66, Phives_62, Pixelle_61, Powerpuff_63, Pumpkins_60, Shaffner_59, Simpson_65, Tallboi_61, Tbone_61, TforTroy_62, Tian_60, Tuck_61, Turab_60, Tutumahutu_63, Warda_62, Yang_61, YesChef_61,

Genes that have the "Most Annotated" start but do not call it:

- VResidence_61,

Genes that do not have the "Most Annotated" start:

- Adolin_63, DrManhattan_64, DrSierra_58, Jankie_57, KeAlii_59, MissSwiss_62, Reedo_62, Snek_60, Tweety19_61, Wildwest_57,

Summary by start number:

Start 11:

- Found in 21 of 55 (38.2%) of genes in pham
- Manual Annotations of this start: 2 of 45
- Called 9.5% of time when present
- Phage (with cluster) where this start called: DrManhattan_64 (AZ1), DrSierra_58 (AZ1),

Start 13:

- Found in 2 of 55 (3.6%) of genes in pham
- Manual Annotations of this start: 1 of 45
- Called 50.0% of time when present
- Phage (with cluster) where this start called: VResidence_61 (AZ1),

Start 14:

- Found in 5 of 55 (9.1%) of genes in pham
- Manual Annotations of this start: 1 of 45
- Called 20.0% of time when present
- Phage (with cluster) where this start called: KeAlii_59 (AZ1),

Start 16:

- Found in 2 of 55 (3.6%) of genes in pham
- Manual Annotations of this start: 1 of 45
- Called 50.0% of time when present
- Phage (with cluster) where this start called: Wildwest_57 (AZ1),

Start 17:

- Found in 6 of 55 (10.9%) of genes in pham
- Manual Annotations of this start: 4 of 45

- Called 83.3% of time when present
- Phage (with cluster) where this start called: Adolin_63 (AZ1), Jankie_57 (FP), MissSwiss_62 (AZ1), Snek_60 (AZ3), Tweety19_61 (AZ3),

Start 18:

- Found in 45 of 55 (81.8%) of genes in pham
- Manual Annotations of this start: 35 of 45
- Called 97.8% of time when present
- Phage (with cluster) where this start called: AEgle_59 (AZ1), AGrandiflora_63 (AZ1), Adumb2043_60 (AZ1), Amyev_61 (AZ1), Asa16_61 (AZ1), Ascela_63 (AZ1), Berrie_61 (AZ1), Cassia_61 (AZ1), Community_61 (AZ1), Crewmate_66 (AZ1), Cyan_62 (AZ1), Elezi_60 (AZ1), Eraser_61 (AZ1), Iter_62 (AZ1), IttyBittyPiggy_60 (AZ1), Janeemi_60 (AZ1), Joemato_62 (AZ1), JohnDoe_62 (AZ1), Jstan_62 (AZ1), JuneStar_61 (AZ1), Kaylissa_63 (AZ1), Lego_61 (AZ1), Lizalica_60 (AZ1), London_61 (AZ1), Mudpuppy_59 (AZ1), Niobe_61 (AZ1), Nitro_62 (AZ1), ObiToo_66 (AZ1), Phives_62 (AZ1), Pixelle_61 (AZ1), Powerpuff_63 (AZ1), Pumpkins_60 (AZ1), Shaffner_59 (AZ1), Simpson_65 (AZ1), Tallboi_61 (AZ1), Tbone_61 (AZ1), TforTroy_62 (AZ1), Tian_60 (AZ1), Tuck_61 (AZ1), Turab_60 (AZ1), Tutumahutu_63 (AZ1), Warda_62 (AZ1), Yang_61 (AZ1), YesChef_61 (AZ1),

Start 19:

- Found in 1 of 55 (1.8%) of genes in pham
- Manual Annotations of this start: 1 of 45
- Called 100.0% of time when present
- Phage (with cluster) where this start called: Reedo_62 (AZ1),

Summary by clusters:

There are 3 clusters represented in this pham: FP, AZ1, AZ3,

Info for manual annotations of cluster AZ1:

- Start number 11 was manually annotated 2 times for cluster AZ1.
- Start number 13 was manually annotated 1 time for cluster AZ1.
- Start number 14 was manually annotated 1 time for cluster AZ1.
- Start number 16 was manually annotated 1 time for cluster AZ1.
- Start number 17 was manually annotated 2 times for cluster AZ1.
- Start number 18 was manually annotated 35 times for cluster AZ1.
- Start number 19 was manually annotated 1 time for cluster AZ1.

Info for manual annotations of cluster AZ3:

- Start number 17 was manually annotated 2 times for cluster AZ3.

Gene Information:

Gene: AEgle_59 Start: 40422, Stop: 40757, Start Num: 18

Candidate Starts for AEgle_59:

(Start: 11 @40347 has 2 MA's), (Start: 18 @40422 has 35 MA's), (22, 40467), (23, 40491), (26, 40539),

Gene: AGrandiflora_63 Start: 41322, Stop: 41654, Start Num: 18

Candidate Starts for AGrandiflora_63:

(15, 41283), (Start: 18 @41322 has 35 MA's), (22, 41367), (26, 41439), (29, 41469),

Gene: Adolin_63 Start: 40162, Stop: 40527, Start Num: 17

Candidate Starts for Adolin_63:

(Start: 11 @40087 has 2 MA's), (12, 40105), (Start: 17 @40162 has 4 MA's), (20, 40177), (23, 40237), (28, 40309), (30, 40366), (39, 40459),

Gene: Adumb2043_60 Start: 40446, Stop: 40781, Start Num: 18

Candidate Starts for Adumb2043_60:

(Start: 11 @40371 has 2 MA's), (Start: 18 @40446 has 35 MA's), (22, 40491), (23, 40515), (26, 40563),

Gene: Amyev_61 Start: 42012, Stop: 42341, Start Num: 18

Candidate Starts for Amyev_61:

(Start: 11 @41940 has 2 MA's), (Start: 18 @42012 has 35 MA's), (22, 42057), (26, 42129),

Gene: Asa16_61 Start: 41006, Stop: 41341, Start Num: 18

Candidate Starts for Asa16_61:

(Start: 18 @41006 has 35 MA's), (22, 41051), (23, 41075), (26, 41123),

Gene: Ascela_63 Start: 41495, Stop: 41830, Start Num: 18

Candidate Starts for Ascela_63:

(Start: 11 @41423 has 2 MA's), (Start: 14 @41456 has 1 MA's), (Start: 18 @41495 has 35 MA's), (22, 41540), (26, 41612),

Gene: Berrie_61 Start: 41120, Stop: 41446, Start Num: 18

Candidate Starts for Berrie_61:

(Start: 18 @41120 has 35 MA's), (22, 41165), (26, 41237),

Gene: Cassia_61 Start: 41124, Stop: 41462, Start Num: 18

Candidate Starts for Cassia_61:

(Start: 18 @41124 has 35 MA's), (22, 41169), (26, 41241), (29, 41271),

Gene: Community_61 Start: 41392, Stop: 41721, Start Num: 18

Candidate Starts for Community_61:

(15, 41353), (Start: 18 @41392 has 35 MA's), (22, 41437), (23, 41461), (26, 41509), (38, 41656),

Gene: Crewmate_66 Start: 41729, Stop: 42073, Start Num: 18

Candidate Starts for Crewmate_66:

(1, 40931), (2, 40940), (3, 41117), (4, 41120), (5, 41252), (6, 41273), (7, 41330), (9, 41534), (Start: 11 @41657 has 2 MA's), (Start: 18 @41729 has 35 MA's), (22, 41774), (26, 41846),

Gene: Cyan_62 Start: 41066, Stop: 41398, Start Num: 18

Candidate Starts for Cyan_62:

(15, 41027), (Start: 18 @41066 has 35 MA's), (22, 41111), (26, 41183), (29, 41213),

Gene: DrManhattan_64 Start: 39641, Stop: 40081, Start Num: 11

Candidate Starts for DrManhattan_64:

(Start: 11 @39641 has 2 MA's), (12, 39659), (Start: 17 @39716 has 4 MA's), (20, 39731), (23, 39791), (28, 39863), (30, 39920), (39, 40013),

Gene: DrSierra_58 Start: 39809, Stop: 40234, Start Num: 11

Candidate Starts for DrSierra_58:

(Start: 11 @39809 has 2 MA's), (Start: 14 @39842 has 1 MA's), (Start: 16 @39881 has 1 MA's), (20, 39899), (28, 40028), (30, 40085), (31, 40097), (39, 40178),

Gene: Elezi_60 Start: 40763, Stop: 41098, Start Num: 18
Candidate Starts for Elezi_60:
(Start: 18 @40763 has 35 MA's), (22, 40808), (23, 40832), (26, 40880),

Gene: Eraser_61 Start: 41013, Stop: 41348, Start Num: 18
Candidate Starts for Eraser_61:
(Start: 18 @41013 has 35 MA's), (22, 41058), (23, 41082), (26, 41130),

Gene: Iter_62 Start: 41266, Stop: 41601, Start Num: 18
Candidate Starts for Iter_62:
(Start: 11 @41194 has 2 MA's), (Start: 14 @41227 has 1 MA's), (Start: 18 @41266 has 35 MA's), (22, 41311), (26, 41383),

Gene: IttyBittyPiggy_60 Start: 39364, Stop: 39705, Start Num: 18
Candidate Starts for IttyBittyPiggy_60:
(Start: 11 @39292 has 2 MA's), (Start: 18 @39364 has 35 MA's), (22, 39409), (26, 39481), (29, 39511),

Gene: Janeemi_60 Start: 40891, Stop: 41220, Start Num: 18
Candidate Starts for Janeemi_60:
(Start: 14 @40849 has 1 MA's), (Start: 18 @40891 has 35 MA's), (22, 40936), (23, 40960), (26, 41008), (38, 41155),

Gene: Jankie_57 Start: 38007, Stop: 38294, Start Num: 17
Candidate Starts for Jankie_57:
(Start: 11 @37947 has 2 MA's), (12, 37965), (Start: 17 @38007 has 4 MA's),

Gene: Joemato_62 Start: 41116, Stop: 41451, Start Num: 18
Candidate Starts for Joemato_62:
(15, 41077), (Start: 18 @41116 has 35 MA's), (22, 41161), (26, 41233), (29, 41263),

Gene: JohnDoe_62 Start: 41160, Stop: 41492, Start Num: 18
Candidate Starts for JohnDoe_62:
(15, 41121), (Start: 18 @41160 has 35 MA's), (22, 41205), (26, 41277), (29, 41307),

Gene: Jstan_62 Start: 40767, Stop: 41102, Start Num: 18
Candidate Starts for Jstan_62:
(Start: 18 @40767 has 35 MA's), (22, 40812), (23, 40836), (26, 40884),

Gene: JuneStar_61 Start: 42226, Stop: 42558, Start Num: 18
Candidate Starts for JuneStar_61:
(10, 42073), (Start: 11 @42154 has 2 MA's), (Start: 18 @42226 has 35 MA's), (22, 42271), (26, 42343), (29, 42373), (38, 42490),

Gene: Kaylissa_63 Start: 41523, Stop: 41855, Start Num: 18
Candidate Starts for Kaylissa_63:
(15, 41484), (Start: 18 @41523 has 35 MA's), (22, 41568), (26, 41640), (29, 41670),

Gene: KeAlii_59 Start: 39420, Stop: 39800, Start Num: 14
Candidate Starts for KeAlii_59:
(Start: 14 @39420 has 1 MA's), (25, 39558), (26, 39564), (30, 39633), (34, 39690),

Gene: Lego_61 Start: 40842, Stop: 41174, Start Num: 18
Candidate Starts for Lego_61:
(15, 40803), (Start: 18 @40842 has 35 MA's), (22, 40887), (26, 40959), (29, 40989),

Gene: Lizalica_60 Start: 40320, Stop: 40652, Start Num: 18
Candidate Starts for Lizalica_60:
(Start: 18 @40320 has 35 MA's), (22, 40365), (26, 40437), (29, 40467), (40, 40599),

Gene: London_61 Start: 41004, Stop: 41339, Start Num: 18
Candidate Starts for London_61:
(Start: 18 @41004 has 35 MA's), (22, 41049), (23, 41073), (26, 41121),

Gene: MissSwiss_62 Start: 39726, Stop: 40088, Start Num: 17
Candidate Starts for MissSwiss_62:
(Start: 11 @39651 has 2 MA's), (12, 39669), (Start: 17 @39726 has 4 MA's), (20, 39741), (28, 39870),
(30, 39927), (39, 40020),

Gene: Mudpuppy_59 Start: 41090, Stop: 41422, Start Num: 18
Candidate Starts for Mudpuppy_59:
(Start: 11 @41018 has 2 MA's), (Start: 18 @41090 has 35 MA's), (22, 41135), (26, 41207), (29, 41237),
(40, 41369),

Gene: Niobe_61 Start: 41007, Stop: 41342, Start Num: 18
Candidate Starts for Niobe_61:
(Start: 18 @41007 has 35 MA's), (22, 41052), (23, 41076), (26, 41124),

Gene: Nitro_62 Start: 41706, Stop: 42038, Start Num: 18
Candidate Starts for Nitro_62:
(Start: 18 @41706 has 35 MA's), (22, 41751), (26, 41823), (29, 41853),

Gene: ObiToo_66 Start: 41345, Stop: 41689, Start Num: 18
Candidate Starts for ObiToo_66:
(Start: 11 @41273 has 2 MA's), (Start: 18 @41345 has 35 MA's), (22, 41390), (26, 41462),

Gene: Phives_62 Start: 41507, Stop: 41836, Start Num: 18
Candidate Starts for Phives_62:
(15, 41468), (Start: 18 @41507 has 35 MA's), (22, 41552), (23, 41576), (26, 41624), (38, 41771),

Gene: Pixelle_61 Start: 42113, Stop: 42442, Start Num: 18
Candidate Starts for Pixelle_61:
(Start: 11 @42041 has 2 MA's), (Start: 18 @42113 has 35 MA's), (22, 42158), (26, 42230),

Gene: Powerpuff_63 Start: 42045, Stop: 42377, Start Num: 18
Candidate Starts for Powerpuff_63:
(15, 42006), (Start: 18 @42045 has 35 MA's), (22, 42090), (26, 42162), (29, 42192),

Gene: Pumpkins_60 Start: 41637, Stop: 41981, Start Num: 18
Candidate Starts for Pumpkins_60:
(Start: 18 @41637 has 35 MA's), (22, 41682), (26, 41754), (29, 41784),

Gene: Reedo_62 Start: 39642, Stop: 39962, Start Num: 19
Candidate Starts for Reedo_62:

(Start: 13 @39588 has 1 MA's), (Start: 19 @39642 has 1 MA's), (31, 39843), (33, 39852), (36, 39897), (37, 39906),

Gene: Shaffner_59 Start: 41330, Stop: 41665, Start Num: 18

Candidate Starts for Shaffner_59:

(15, 41291), (Start: 18 @41330 has 35 MA's), (22, 41375), (26, 41447), (29, 41477), (38, 41594),

Gene: Simpson_65 Start: 41120, Stop: 41455, Start Num: 18

Candidate Starts for Simpson_65:

(15, 41081), (Start: 18 @41120 has 35 MA's), (22, 41165), (26, 41237), (29, 41267),

Gene: Snek_60 Start: 38237, Stop: 38578, Start Num: 17

Candidate Starts for Snek_60:

(8, 38042), (Start: 17 @38237 has 4 MA's), (20, 38252), (21, 38276), (27, 38360), (30, 38426), (32, 38441), (35, 38486), (42, 38555),

Gene: Tallboi_61 Start: 41005, Stop: 41346, Start Num: 18

Candidate Starts for Tallboi_61:

(Start: 11 @40930 has 2 MA's), (Start: 18 @41005 has 35 MA's), (22, 41053), (23, 41077), (26, 41125), (29, 41155), (37, 41269), (40, 41287),

Gene: Tbone_61 Start: 41486, Stop: 41824, Start Num: 18

Candidate Starts for Tbone_61:

(Start: 11 @41414 has 2 MA's), (Start: 18 @41486 has 35 MA's), (22, 41531), (26, 41603), (29, 41633), (40, 41765),

Gene: TforTroy_62 Start: 41302, Stop: 41634, Start Num: 18

Candidate Starts for TforTroy_62:

(Start: 18 @41302 has 35 MA's), (22, 41347), (26, 41419), (29, 41449),

Gene: Tian_60 Start: 42011, Stop: 42340, Start Num: 18

Candidate Starts for Tian_60:

(Start: 11 @41939 has 2 MA's), (Start: 18 @42011 has 35 MA's), (22, 42056), (26, 42128),

Gene: Tuck_61 Start: 41295, Stop: 41624, Start Num: 18

Candidate Starts for Tuck_61:

(15, 41256), (Start: 18 @41295 has 35 MA's), (22, 41340), (23, 41364), (26, 41412), (38, 41559),

Gene: Turab_60 Start: 40466, Stop: 40801, Start Num: 18

Candidate Starts for Turab_60:

(Start: 11 @40391 has 2 MA's), (Start: 18 @40466 has 35 MA's), (22, 40511), (23, 40535), (26, 40583),

Gene: Tutumahutu_63 Start: 41088, Stop: 41420, Start Num: 18

Candidate Starts for Tutumahutu_63:

(15, 41049), (Start: 18 @41088 has 35 MA's), (22, 41133), (26, 41205), (29, 41235),

Gene: Tweety19_61 Start: 38238, Stop: 38579, Start Num: 17

Candidate Starts for Tweety19_61:

(8, 38043), (Start: 17 @38238 has 4 MA's), (20, 38253), (27, 38361), (30, 38427), (32, 38442), (35, 38487), (42, 38556),

Gene: VResidence_61 Start: 38974, Stop: 39348, Start Num: 13

Candidate Starts for VResidence_61:

(Start: 13 @38974 has 1 MA's), (Start: 18 @39028 has 35 MA's), (31, 39223), (41, 39304),

Gene: Warda_62 Start: 41212, Stop: 41550, Start Num: 18

Candidate Starts for Warda_62:

(Start: 11 @41140 has 2 MA's), (Start: 18 @41212 has 35 MA's), (22, 41257), (26, 41329), (29, 41359), (40, 41491),

Gene: Wildwest_57 Start: 40861, Stop: 41223, Start Num: 16

Candidate Starts for Wildwest_57:

(Start: 16 @40861 has 1 MA's), (20, 40879), (24, 40969), (28, 41008), (30, 41065), (39, 41158),

Gene: Yang_61 Start: 40955, Stop: 41278, Start Num: 18

Candidate Starts for Yang_61:

(Start: 18 @40955 has 35 MA's), (22, 41000), (26, 41072), (29, 41102),

Gene: YesChef_61 Start: 40904, Stop: 41236, Start Num: 18

Candidate Starts for YesChef_61:

(15, 40865), (Start: 18 @40904 has 35 MA's), (22, 40949), (26, 41021), (29, 41051),