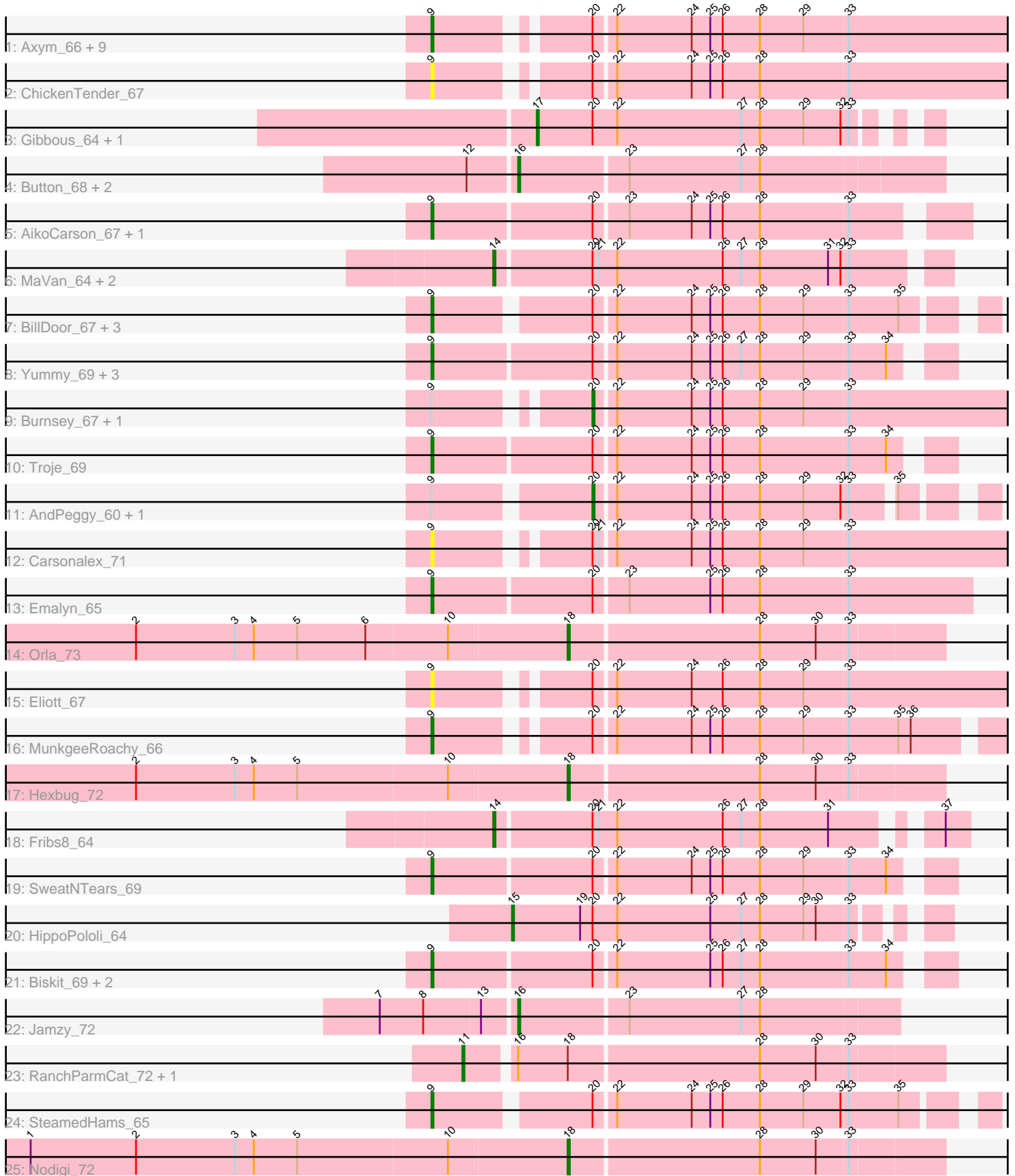


Pham 203007



Note: Tracks are now grouped by subcluster and scaled. Switching in subcluster is indicated by changes in track color. Track scale is now set by default to display the region 30 bp upstream of start 1 to 30 bp downstream of the last possible start. If this default region is judged to be packed too tightly with annotated starts, the track will be further scaled to only show that region of the ORF with annotated starts. This action will be indicated by adding "Zoomed" to the title. For starts, yellow indicates the location of called starts comprised solely of Glimmer/GeneMark auto-annotations, green indicates the location of called starts with at least 1 manual gene annotation.

Pham 203007 Report

This analysis was run 01/18/25 on database version 583.

Pham number 203007 has 51 members, 12 are drafts.

Phages represented in each track:

- Track 1 : Axym_66, Typhonmarchy_68, Sopespian_64, GoldHunter_69, PsychoKiller_66, Cozz_67, Nina_67, Agatha_68, Starburst_69, RedBaron_73
- Track 2 : ChickenTender_67
- Track 3 : Gibbous_64, Dre3_64
- Track 4 : Button_68, Yakult_71, GiKK_72
- Track 5 : AikoCarson_67, Amok_66
- Track 6 : MaVan_64, Azira_64, Survivors_66
- Track 7 : BillDoor_67, ChocoMunchkin_63, Tolls_66, CanesSauce_63
- Track 8 : Yummy_69, Buttrmlkdreams_69, MScarn_71, Horseradish_69
- Track 9 : Burnsey_67, Quasar_68
- Track 10 : Troje_69
- Track 11 : AndPeggy_60, Yarn_61
- Track 12 : Carsonalex_71
- Track 13 : Emalyn_65
- Track 14 : Orla_73
- Track 15 : Elliott_67
- Track 16 : MunkgeeRoachy_66
- Track 17 : Hexbug_72
- Track 18 : Fribs8_64
- Track 19 : SweatNTears_69
- Track 20 : HippoPololi_64
- Track 21 : Biskit_69, SketchMex_67, Blondies_72
- Track 22 : Jamzy_72
- Track 23 : RanchParmCat_72, Margaret_73
- Track 24 : SteamedHams_65
- Track 25 : Nodigi_72

Summary of Final Annotations (See graph section above for start numbers):

The start number called the most often in the published annotations is 9, it was called in 19 of the 39 non-draft genes in the pham.

Genes that call this "Most Annotated" start:

- Agatha_68, AikoCarson_67, Amok_66, Axym_66, BillDoor_67, Biskit_69, Blondies_72, Buttrmlkdreams_69, CanesSauce_63, Carsonalex_71, ChickenTender_67, ChocoMunchkin_63, Cozz_67, Elliott_67, Emalyn_65, GoldHunter_69, Horseradish_69, MScarn_71, MunkgeeRoachy_66, Nina_67, PsychoKiller_66, RedBaron_73, SketchMex_67, Sopespian_64, Starburst_69, SteamedHams_65, SweatNTears_69, Tolls_66, Troje_69, Typhonomachy_68, Yummy_69,

Genes that have the "Most Annotated" start but do not call it:

- AndPeggy_60, Burnsey_67, Quasar_68, Yarn_61,

Genes that do not have the "Most Annotated" start:

- Azira_64, Button_68, Dre3_64, Fribs8_64, GiKK_72, Gibbous_64, Hexbug_72, HippoPololi_64, Jamzy_72, MaVan_64, Margaret_73, Nodigi_72, Orla_73, RanchParmCat_72, Survivors_66, Yakult_71,

Summary by start number:

Start 9:

- Found in 35 of 51 (68.6%) of genes in pham
- Manual Annotations of this start: 19 of 39
- Called 88.6% of time when present
- Phage (with cluster) where this start called: Agatha_68 (CT), AikoCarson_67 (CT), Amok_66 (CT), Axym_66 (CT), BillDoor_67 (CT), Biskit_69 (CT), Blondies_72 (CT), Buttrmlkdreams_69 (CT), CanesSauce_63 (CT), Carsonalex_71 (CT), ChickenTender_67 (CT), ChocoMunchkin_63 (CT), Cozz_67 (CT), Elliott_67 (CT), Emalyn_65 (CT), GoldHunter_69 (CT), Horseradish_69 (CT), MScarn_71 (CT), MunkgeeRoachy_66 (CT), Nina_67 (CT), PsychoKiller_66 (CT), RedBaron_73 (CT), SketchMex_67 (CT), Sopespian_64 (CT), Starburst_69 (CT), SteamedHams_65 (CT), SweatNTears_69 (CT), Tolls_66 (CT), Troje_69 (CT), Typhonomachy_68 (CT), Yummy_69 (CT),

Start 11:

- Found in 2 of 51 (3.9%) of genes in pham
- Manual Annotations of this start: 2 of 39
- Called 100.0% of time when present
- Phage (with cluster) where this start called: Margaret_73 (CT), RanchParmCat_72 (CT),

Start 14:

- Found in 4 of 51 (7.8%) of genes in pham
- Manual Annotations of this start: 4 of 39
- Called 100.0% of time when present
- Phage (with cluster) where this start called: Azira_64 (CT), Fribs8_64 (CT), MaVan_64 (CT), Survivors_66 (CT),

Start 15:

- Found in 1 of 51 (2.0%) of genes in pham
- Manual Annotations of this start: 1 of 39
- Called 100.0% of time when present
- Phage (with cluster) where this start called: HippoPololi_64 (CT),

Start 16:

- Found in 6 of 51 (11.8%) of genes in pham
- Manual Annotations of this start: 4 of 39
- Called 66.7% of time when present
- Phage (with cluster) where this start called: Button_68 (CT), GiKK_72 (CT), Jamzy_72 (CT), Yakult_71 (CT),

Start 17:

- Found in 2 of 51 (3.9%) of genes in pham
- Manual Annotations of this start: 2 of 39
- Called 100.0% of time when present
- Phage (with cluster) where this start called: Dre3_64 (CT), Gibbous_64 (CT),

Start 18:

- Found in 5 of 51 (9.8%) of genes in pham
- Manual Annotations of this start: 3 of 39
- Called 60.0% of time when present
- Phage (with cluster) where this start called: Hexbug_72 (CT), Nodigi_72 (CT), Orla_73 (CT),

Start 20:

- Found in 42 of 51 (82.4%) of genes in pham
- Manual Annotations of this start: 4 of 39
- Called 9.5% of time when present
- Phage (with cluster) where this start called: AndPeggy_60 (CT), Burnsey_67 (CT), Quasar_68 (CT), Yarn_61 (CT),

Summary by clusters:

There is one cluster represented in this pham: CT

Info for manual annotations of cluster CT:

- Start number 9 was manually annotated 19 times for cluster CT.
- Start number 11 was manually annotated 2 times for cluster CT.
- Start number 14 was manually annotated 4 times for cluster CT.
- Start number 15 was manually annotated 1 time for cluster CT.
- Start number 16 was manually annotated 4 times for cluster CT.
- Start number 17 was manually annotated 2 times for cluster CT.
- Start number 18 was manually annotated 3 times for cluster CT.
- Start number 20 was manually annotated 4 times for cluster CT.

Gene Information:

Gene: Agatha_68 Start: 45224, Stop: 45496, Start Num: 9

Candidate Starts for Agatha_68:

(Start: 9 @45224 has 19 MA's), (Start: 20 @45287 has 4 MA's), (22, 45296), (24, 45332), (25, 45341), (26, 45347), (28, 45365), (29, 45386), (33, 45407),

Gene: AikoCarson_67 Start: 44165, Stop: 44407, Start Num: 9

Candidate Starts for AikoCarson_67:

(Start: 9 @44165 has 19 MA's), (Start: 20 @44240 has 4 MA's), (23, 44255), (24, 44285), (25, 44294), (26, 44300), (28, 44318), (33, 44360),

Gene: Amok_66 Start: 44205, Stop: 44444, Start Num: 9

Candidate Starts for Amok_66:

(Start: 9 @44205 has 19 MA's), (Start: 20 @44280 has 4 MA's), (23, 44295), (24, 44325), (25, 44334), (26, 44340), (28, 44358), (33, 44400),

Gene: AndPeggy_60 Start: 43276, Stop: 43449, Start Num: 20

Candidate Starts for AndPeggy_60:

(Start: 9 @43207 has 19 MA's), (Start: 20 @43276 has 4 MA's), (22, 43285), (24, 43321), (25, 43330), (26, 43336), (28, 43354), (29, 43375), (32, 43393), (33, 43396), (35, 43414),

Gene: Axym_66 Start: 45099, Stop: 45371, Start Num: 9

Candidate Starts for Axym_66:

(Start: 9 @45099 has 19 MA's), (Start: 20 @45162 has 4 MA's), (22, 45171), (24, 45207), (25, 45216), (26, 45222), (28, 45240), (29, 45261), (33, 45282),

Gene: Azira_64 Start: 44044, Stop: 44253, Start Num: 14

Candidate Starts for Azira_64:

(Start: 14 @44044 has 4 MA's), (Start: 20 @44089 has 4 MA's), (21, 44092), (22, 44101), (26, 44152), (27, 44161), (28, 44170), (31, 44203), (32, 44209), (33, 44212),

Gene: BillDoor_67 Start: 43474, Stop: 43722, Start Num: 9

Candidate Starts for BillDoor_67:

(Start: 9 @43474 has 19 MA's), (Start: 20 @43543 has 4 MA's), (22, 43552), (24, 43588), (25, 43597), (26, 43603), (28, 43621), (29, 43642), (33, 43663), (35, 43687),

Gene: Biskit_69 Start: 44728, Stop: 44964, Start Num: 9

Candidate Starts for Biskit_69:

(Start: 9 @44728 has 19 MA's), (Start: 20 @44803 has 4 MA's), (22, 44812), (25, 44857), (26, 44863), (27, 44872), (28, 44881), (33, 44923), (34, 44941),

Gene: Blondies_72 Start: 45047, Stop: 45283, Start Num: 9

Candidate Starts for Blondies_72:

(Start: 9 @45047 has 19 MA's), (Start: 20 @45122 has 4 MA's), (22, 45131), (25, 45176), (26, 45182), (27, 45191), (28, 45200), (33, 45242), (34, 45260),

Gene: Burnsey_67 Start: 44874, Stop: 45083, Start Num: 20

Candidate Starts for Burnsey_67:

(Start: 9 @44811 has 19 MA's), (Start: 20 @44874 has 4 MA's), (22, 44883), (24, 44919), (25, 44928), (26, 44934), (28, 44952), (29, 44973), (33, 44994),

Gene: Button_68 Start: 45066, Stop: 45266, Start Num: 16

Candidate Starts for Button_68:

(12, 45045), (Start: 16 @45066 has 4 MA's), (23, 45117), (27, 45171), (28, 45180),

Gene: Buttrmlkdreams_69 Start: 44897, Stop: 45133, Start Num: 9

Candidate Starts for Buttrmlkdreams_69:

(Start: 9 @44897 has 19 MA's), (Start: 20 @44972 has 4 MA's), (22, 44981), (24, 45017), (25, 45026), (26, 45032), (27, 45041), (28, 45050), (29, 45071), (33, 45092), (34, 45110),

Gene: CanesSauce_63 Start: 43368, Stop: 43616, Start Num: 9

Candidate Starts for CanesSauce_63:

(Start: 9 @43368 has 19 MA's), (Start: 20 @43437 has 4 MA's), (22, 43446), (24, 43482), (25, 43491), (26, 43497), (28, 43515), (29, 43536), (33, 43557), (35, 43581),

Gene: Carsonalex_71 Start: 45269, Stop: 45541, Start Num: 9

Candidate Starts for Carsonalex_71:

(Start: 9 @45269 has 19 MA's), (Start: 20 @45332 has 4 MA's), (21, 45335), (22, 45341), (24, 45377), (25, 45386), (26, 45392), (28, 45410), (29, 45431), (33, 45452),

Gene: ChickenTender_67 Start: 43889, Stop: 44161, Start Num: 9

Candidate Starts for ChickenTender_67:

(Start: 9 @43889 has 19 MA's), (Start: 20 @43952 has 4 MA's), (22, 43961), (24, 43997), (25, 44006), (26, 44012), (28, 44030), (33, 44072),

Gene: ChocoMunchkin_63 Start: 43368, Stop: 43616, Start Num: 9

Candidate Starts for ChocoMunchkin_63:

(Start: 9 @43368 has 19 MA's), (Start: 20 @43437 has 4 MA's), (22, 43446), (24, 43482), (25, 43491), (26, 43497), (28, 43515), (29, 43536), (33, 43557), (35, 43581),

Gene: Cozz_67 Start: 45226, Stop: 45498, Start Num: 9

Candidate Starts for Cozz_67:

(Start: 9 @45226 has 19 MA's), (Start: 20 @45289 has 4 MA's), (22, 45298), (24, 45334), (25, 45343), (26, 45349), (28, 45367), (29, 45388), (33, 45409),

Gene: Dre3_64 Start: 44202, Stop: 44378, Start Num: 17

Candidate Starts for Dre3_64:

(Start: 17 @44202 has 2 MA's), (Start: 20 @44229 has 4 MA's), (22, 44241), (27, 44301), (28, 44310), (29, 44331), (32, 44349), (33, 44352),

Gene: Elliott_67 Start: 44695, Stop: 44967, Start Num: 9

Candidate Starts for Elliott_67:

(Start: 9 @44695 has 19 MA's), (Start: 20 @44758 has 4 MA's), (22, 44767), (24, 44803), (26, 44818), (28, 44836), (29, 44857), (33, 44878),

Gene: Emalyn_65 Start: 42894, Stop: 43148, Start Num: 9

Candidate Starts for Emalyn_65:

(Start: 9 @42894 has 19 MA's), (Start: 20 @42969 has 4 MA's), (23, 42984), (25, 43023), (26, 43029), (28, 43047), (33, 43089),

Gene: Fribs8_64 Start: 44678, Stop: 44887, Start Num: 14

Candidate Starts for Fribs8_64:

(Start: 14 @44678 has 4 MA's), (Start: 20 @44723 has 4 MA's), (21, 44726), (22, 44735), (26, 44786), (27, 44795), (28, 44804), (31, 44837), (37, 44876),

Gene: GiKK_72 Start: 46277, Stop: 46456, Start Num: 16

Candidate Starts for GiKK_72:

(12, 46256), (Start: 16 @46277 has 4 MA's), (23, 46328), (27, 46382), (28, 46391),

Gene: Gibbous_64 Start: 44202, Stop: 44378, Start Num: 17

Candidate Starts for Gibbous_64:

(Start: 17 @44202 has 2 MA's), (Start: 20 @44229 has 4 MA's), (22, 44241), (27, 44301), (28, 44310), (29, 44331), (32, 44349), (33, 44352),

Gene: GoldHunter_69 Start: 45215, Stop: 45487, Start Num: 9

Candidate Starts for GoldHunter_69:

(Start: 9 @45215 has 19 MA's), (Start: 20 @45278 has 4 MA's), (22, 45287), (24, 45323), (25, 45332), (26, 45338), (28, 45356), (29, 45377), (33, 45398),

Gene: Hexbug_72 Start: 46284, Stop: 46460, Start Num: 18

Candidate Starts for Hexbug_72:

(2, 46077), (3, 46125), (4, 46134), (5, 46155), (10, 46227), (Start: 18 @46284 has 3 MA's), (28, 46374), (30, 46401), (33, 46416),

Gene: HippoPololi_64 Start: 43762, Stop: 43956, Start Num: 15

Candidate Starts for HippoPololi_64:

(Start: 15 @43762 has 1 MA's), (19, 43795), (Start: 20 @43801 has 4 MA's), (22, 43813), (25, 43858), (27, 43873), (28, 43882), (29, 43903), (30, 43909), (33, 43924),

Gene: Horseradish_69 Start: 44661, Stop: 44897, Start Num: 9

Candidate Starts for Horseradish_69:

(Start: 9 @44661 has 19 MA's), (Start: 20 @44736 has 4 MA's), (22, 44745), (24, 44781), (25, 44790), (26, 44796), (27, 44805), (28, 44814), (29, 44835), (33, 44856), (34, 44874),

Gene: Jamzy_72 Start: 46007, Stop: 46186, Start Num: 16

Candidate Starts for Jamzy_72:

(7, 45944), (8, 45965), (13, 45992), (Start: 16 @46007 has 4 MA's), (23, 46058), (27, 46112), (28, 46121),

Gene: MScarn_71 Start: 44575, Stop: 44811, Start Num: 9

Candidate Starts for MScarn_71:

(Start: 9 @44575 has 19 MA's), (Start: 20 @44650 has 4 MA's), (22, 44659), (24, 44695), (25, 44704), (26, 44710), (27, 44719), (28, 44728), (29, 44749), (33, 44770), (34, 44788),

Gene: MaVan_64 Start: 44074, Stop: 44283, Start Num: 14

Candidate Starts for MaVan_64:

(Start: 14 @44074 has 4 MA's), (Start: 20 @44119 has 4 MA's), (21, 44122), (22, 44131), (26, 44182), (27, 44191), (28, 44200), (31, 44233), (32, 44239), (33, 44242),

Gene: Margaret_73 Start: 45790, Stop: 46011, Start Num: 11

Candidate Starts for Margaret_73:

(Start: 11 @45790 has 2 MA's), (Start: 16 @45811 has 4 MA's), (Start: 18 @45835 has 3 MA's), (28, 45925), (30, 45952), (33, 45967),

Gene: MunkgeeRoachy_66 Start: 44540, Stop: 44803, Start Num: 9

Candidate Starts for MunkgeeRoachy_66:

(Start: 9 @44540 has 19 MA's), (Start: 20 @44603 has 4 MA's), (22, 44612), (24, 44648), (25, 44657), (26, 44663), (28, 44681), (29, 44702), (33, 44723), (35, 44747), (36, 44753),

Gene: Nina_67 Start: 45298, Stop: 45570, Start Num: 9

Candidate Starts for Nina_67:

(Start: 9 @45298 has 19 MA's), (Start: 20 @45361 has 4 MA's), (22, 45370), (24, 45406), (25, 45415), (26, 45421), (28, 45439), (29, 45460), (33, 45481),

Gene: Nodigi_72 Start: 46305, Stop: 46481, Start Num: 18

Candidate Starts for Nodigi_72:

(1, 46047), (2, 46098), (3, 46146), (4, 46155), (5, 46176), (10, 46248), (Start: 18 @46305 has 3 MA's), (28, 46395), (30, 46422), (33, 46437),

Gene: Orla_73 Start: 46436, Stop: 46612, Start Num: 18

Candidate Starts for Orla_73:

(2, 46229), (3, 46277), (4, 46286), (5, 46307), (6, 46340), (10, 46379), (Start: 18 @46436 has 3 MA's), (28, 46526), (30, 46553), (33, 46568),

Gene: PsychoKiller_66 Start: 44696, Stop: 44968, Start Num: 9

Candidate Starts for PsychoKiller_66:

(Start: 9 @44696 has 19 MA's), (Start: 20 @44759 has 4 MA's), (22, 44768), (24, 44804), (25, 44813), (26, 44819), (28, 44837), (29, 44858), (33, 44879),

Gene: Quasar_68 Start: 45648, Stop: 45857, Start Num: 20

Candidate Starts for Quasar_68:

(Start: 9 @45585 has 19 MA's), (Start: 20 @45648 has 4 MA's), (22, 45657), (24, 45693), (25, 45702), (26, 45708), (28, 45726), (29, 45747), (33, 45768),

Gene: RanchParmCat_72 Start: 46082, Stop: 46303, Start Num: 11

Candidate Starts for RanchParmCat_72:

(Start: 11 @46082 has 2 MA's), (Start: 16 @46103 has 4 MA's), (Start: 18 @46127 has 3 MA's), (28, 46217), (30, 46244), (33, 46259),

Gene: RedBaron_73 Start: 46122, Stop: 46394, Start Num: 9

Candidate Starts for RedBaron_73:

(Start: 9 @46122 has 19 MA's), (Start: 20 @46185 has 4 MA's), (22, 46194), (24, 46230), (25, 46239), (26, 46245), (28, 46263), (29, 46284), (33, 46305),

Gene: SketchMex_67 Start: 44728, Stop: 44964, Start Num: 9

Candidate Starts for SketchMex_67:

(Start: 9 @44728 has 19 MA's), (Start: 20 @44803 has 4 MA's), (22, 44812), (25, 44857), (26, 44863), (27, 44872), (28, 44881), (33, 44923), (34, 44941),

Gene: Sopespian_64 Start: 44697, Stop: 44969, Start Num: 9

Candidate Starts for Sopespian_64:

(Start: 9 @44697 has 19 MA's), (Start: 20 @44760 has 4 MA's), (22, 44769), (24, 44805), (25, 44814), (26, 44820), (28, 44838), (29, 44859), (33, 44880),

Gene: Starburst_69 Start: 45104, Stop: 45376, Start Num: 9

Candidate Starts for Starburst_69:

(Start: 9 @45104 has 19 MA's), (Start: 20 @45167 has 4 MA's), (22, 45176), (24, 45212), (25, 45221), (26, 45227), (28, 45245), (29, 45266), (33, 45287),

Gene: SteamedHams_65 Start: 43184, Stop: 43432, Start Num: 9

Candidate Starts for SteamedHams_65:

(Start: 9 @43184 has 19 MA's), (Start: 20 @43253 has 4 MA's), (22, 43262), (24, 43298), (25, 43307), (26, 43313), (28, 43331), (29, 43352), (32, 43370), (33, 43373), (35, 43397),

Gene: Survivors_66 Start: 44109, Stop: 44309, Start Num: 14

Candidate Starts for Survivors_66:

(Start: 14 @44109 has 4 MA's), (Start: 20 @44154 has 4 MA's), (21, 44157), (22, 44166), (26, 44217), (27, 44226), (28, 44235), (31, 44268), (32, 44274), (33, 44277),

Gene: SweatNTears_69 Start: 44823, Stop: 45059, Start Num: 9

Candidate Starts for SweatNTears_69:

(Start: 9 @44823 has 19 MA's), (Start: 20 @44898 has 4 MA's), (22, 44907), (24, 44943), (25, 44952), (26, 44958), (28, 44976), (29, 44997), (33, 45018), (34, 45036),

Gene: Tolls_66 Start: 43455, Stop: 43703, Start Num: 9

Candidate Starts for Tolls_66:

(Start: 9 @43455 has 19 MA's), (Start: 20 @43524 has 4 MA's), (22, 43533), (24, 43569), (25, 43578), (26, 43584), (28, 43602), (29, 43623), (33, 43644), (35, 43668),

Gene: Troje_69 Start: 44798, Stop: 45034, Start Num: 9

Candidate Starts for Troje_69:

(Start: 9 @44798 has 19 MA's), (Start: 20 @44873 has 4 MA's), (22, 44882), (24, 44918), (25, 44927), (26, 44933), (28, 44951), (33, 44993), (34, 45011),

Gene: Typhonomachy_68 Start: 44923, Stop: 45186, Start Num: 9

Candidate Starts for Typhonomachy_68:

(Start: 9 @44923 has 19 MA's), (Start: 20 @44986 has 4 MA's), (22, 44995), (24, 45031), (25, 45040), (26, 45046), (28, 45064), (29, 45085), (33, 45106),

Gene: Yakult_71 Start: 46173, Stop: 46373, Start Num: 16

Candidate Starts for Yakult_71:

(12, 46152), (Start: 16 @46173 has 4 MA's), (23, 46224), (27, 46278), (28, 46287),

Gene: Yarn_61 Start: 43281, Stop: 43460, Start Num: 20

Candidate Starts for Yarn_61:

(Start: 9 @43212 has 19 MA's), (Start: 20 @43281 has 4 MA's), (22, 43290), (24, 43326), (25, 43335), (26, 43341), (28, 43359), (29, 43380), (32, 43398), (33, 43401), (35, 43425),

Gene: Yummy_69 Start: 44775, Stop: 45011, Start Num: 9

Candidate Starts for Yummy_69:

(Start: 9 @44775 has 19 MA's), (Start: 20 @44850 has 4 MA's), (22, 44859), (24, 44895), (25, 44904), (26, 44910), (27, 44919), (28, 44928), (29, 44949), (33, 44970), (34, 44988),