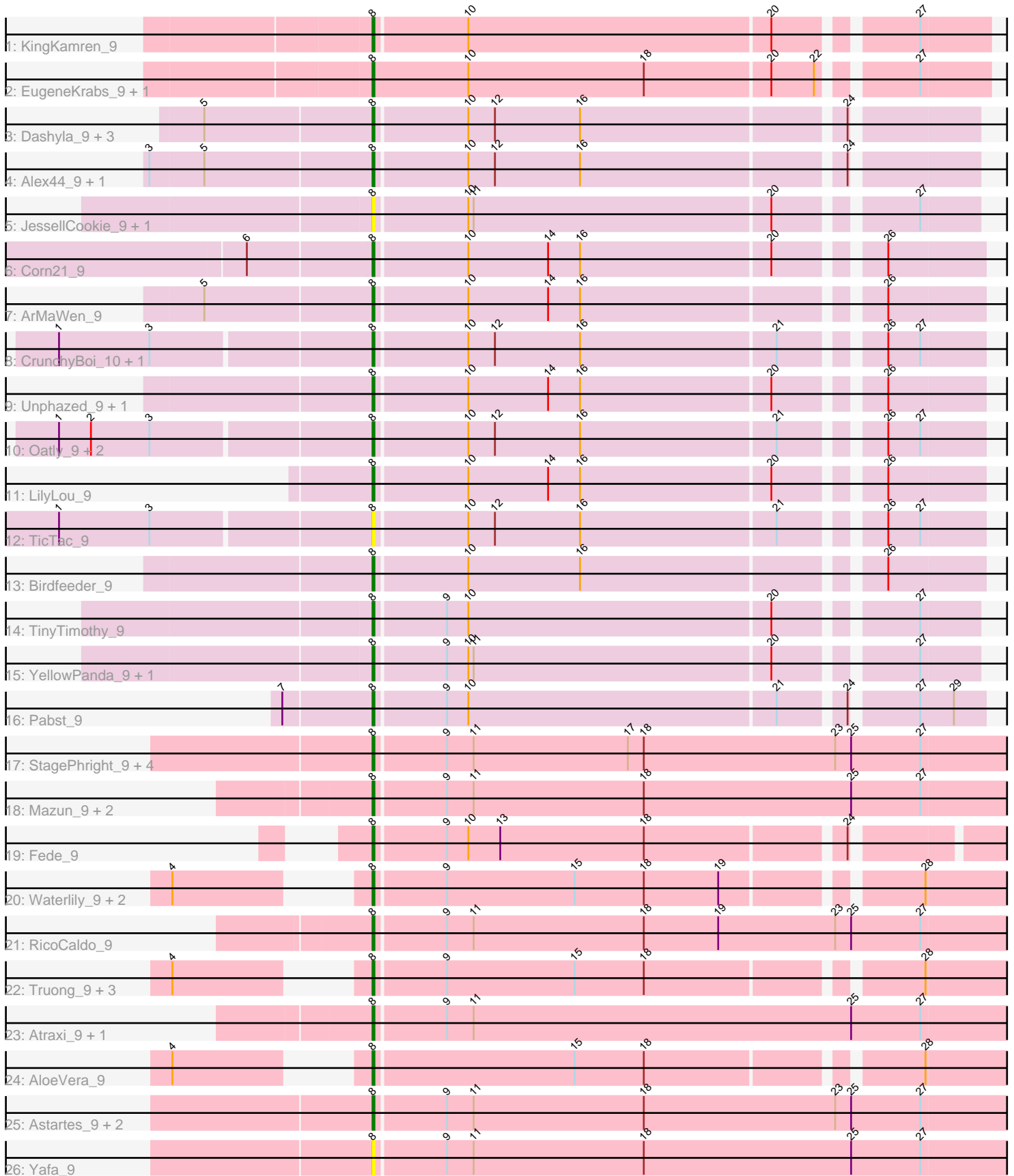


# Pham 203011



Note: Tracks are now grouped by subcluster and scaled. Switching in subcluster is indicated by changes in track color. Track scale is now set by default to display the region 30 bp upstream of start 1 to 30 bp downstream of the last possible start. If this default region is judged to be packed too tightly with annotated starts, the track will be further scaled to only show that region of the ORF with annotated starts. This action will be indicated by adding "Zoomed" to the title. For starts, yellow indicates the location of called starts comprised solely of Glimmer/GeneMark auto-annotations, green indicates the location of called starts with at least 1 manual gene annotation.

## Pham 203011 Report

This analysis was run 01/18/25 on database version 583.

Pham number 203011 has 51 members, 10 are drafts.

Phages represented in each track:

- Track 1 : KingKamren\_9
- Track 2 : EugeneKrabs\_9, Zhengyi\_9
- Track 3 : Dashyla\_9, Phogo\_9, SwissCheezer\_9, Xitlalli\_9
- Track 4 : Alex44\_9, Stormbreaker\_9
- Track 5 : JessellCookie\_9, MiamiPanther\_9
- Track 6 : Corn21\_9
- Track 7 : ArMaWen\_9
- Track 8 : CrunchyBoi\_10, PineapplePluto\_10
- Track 9 : Unphazed\_9, DumpQuist\_9
- Track 10 : Oatly\_9, Biozilla\_9, HitchHiker\_10
- Track 11 : LilyLou\_9
- Track 12 : TicTac\_9
- Track 13 : Birdfeeder\_9
- Track 14 : TinyTimothy\_9
- Track 15 : YellowPanda\_9, Wesak\_9
- Track 16 : Pabst\_9
- Track 17 : StagePhright\_9, Phractured\_9, Pharky\_9, Phedro\_9, Fullmetal\_9
- Track 18 : Mazun\_9, TrippleS\_9, ThirteenKH\_9
- Track 19 : Fede\_9
- Track 20 : Waterlily\_9, Akoni\_9, Ashton\_9
- Track 21 : RicoCaldo\_9
- Track 22 : Truong\_9, Barroma\_9, JordanFarm\_9, ShyRosie\_9
- Track 23 : Atraxi\_9, Morrill\_9
- Track 24 : AloeVera\_9
- Track 25 : Astartes\_9, PhriedRice\_9, Moleficent\_9
- Track 26 : Yafa\_9

### ***Summary of Final Annotations (See graph section above for start numbers):***

The start number called the most often in the published annotations is 8, it was called in 41 of the 41 non-draft genes in the pham.

Genes that call this "Most Annotated" start:

- Akoni\_9, Alex44\_9, AloeVera\_9, ArMaWen\_9, Ashton\_9, Astartes\_9, Atraxi\_9, Barroma\_9, Biozilla\_9, Birdfeeder\_9, Corn21\_9, CrunchyBoi\_10, Dashyla\_9, DumpQuist\_9, EugeneKrabs\_9, Fede\_9, Fullmetal\_9, HitchHiker\_10, JessellCookie\_9, JordanFarm\_9, KingKamren\_9, LilyLou\_9, Mazun\_9, MiamiPanther\_9, Moleficent\_9, Morrill\_9, Oatly\_9, Pabst\_9, Pharky\_9, Phedro\_9, Phogo\_9, Phracted\_9, PhriedRice\_9, PineapplePluto\_10, RicoCaldo\_9, ShyRosie\_9, StagePhright\_9, Stormbreaker\_9, SwissCheezer\_9, ThirteenKH\_9, TicTac\_9, TinyTimothy\_9, TrippleS\_9, Truong\_9, Unphazed\_9, Waterlily\_9, Wesak\_9, Xitlalli\_9, Yafa\_9, YellowPanda\_9, Zhengyi\_9,

Genes that have the "Most Annotated" start but do not call it:

- 

Genes that do not have the "Most Annotated" start:

- 

### Summary by start number:

Start 8:

- Found in 51 of 51 ( 100.0% ) of genes in pham
- Manual Annotations of this start: 41 of 41
- Called 100.0% of time when present
- Phage (with cluster) where this start called: Akoni\_9 (EK2), Alex44\_9 (EK1), AloeVera\_9 (EK2), ArMaWen\_9 (EK1), Ashton\_9 (EK2), Astartes\_9 (EK2), Atraxi\_9 (EK2), Barroma\_9 (EK2), Biozilla\_9 (EK1), Birdfeeder\_9 (EK1), Corn21\_9 (EK1), CrunchyBoi\_10 (EK1), Dashyla\_9 (EK1), DumpQuist\_9 (EK1), EugeneKrabs\_9 (EK), Fede\_9 (EK2), Fullmetal\_9 (EK2), HitchHiker\_10 (EK1), JessellCookie\_9 (EK1), JordanFarm\_9 (EK2), KingKamren\_9 (EK), LilyLou\_9 (EK1), Mazun\_9 (EK2), MiamiPanther\_9 (EK1), Moleficent\_9 (EK2), Morrill\_9 (EK2), Oatly\_9 (EK1), Pabst\_9 (EK1), Pharky\_9 (EK2), Phedro\_9 (EK2), Phogo\_9 (EK1), Phracted\_9 (EK2), PhriedRice\_9 (EK2), PineapplePluto\_10 (EK1), RicoCaldo\_9 (EK2), ShyRosie\_9 (EK2), StagePhright\_9 (EK2), Stormbreaker\_9 (EK1), SwissCheezer\_9 (EK1), ThirteenKH\_9 (EK2), TicTac\_9 (EK1), TinyTimothy\_9 (EK1), TrippleS\_9 (EK2), Truong\_9 (EK2), Unphazed\_9 (EK1), Waterlily\_9 (EK2), Wesak\_9 (EK1), Xitlalli\_9 (EK1), Yafa\_9 (EK2), YellowPanda\_9 (EK1), Zhengyi\_9 (EK),

### Summary by clusters:

There are 3 clusters represented in this pham: EK, EK2, EK1,

Info for manual annotations of cluster EK:

- Start number 8 was manually annotated 3 times for cluster EK.

Info for manual annotations of cluster EK1:

- Start number 8 was manually annotated 18 times for cluster EK1.

Info for manual annotations of cluster EK2:

- Start number 8 was manually annotated 20 times for cluster EK2.

### Gene Information:

Gene: Akoni\_9 Start: 6089, Stop: 5751, Start Num: 8  
Candidate Starts for Akoni\_9:  
(4, 6161), (Start: 8 @6089 has 41 MA's), (9, 6050), (15, 5978), (18, 5939), (19, 5897), (28, 5798),

Gene: Alex44\_9 Start: 6356, Stop: 6036, Start Num: 8  
Candidate Starts for Alex44\_9:  
(3, 6476), (5, 6446), (Start: 8 @6356 has 41 MA's), (10, 6305), (12, 6290), (16, 6242), (24, 6101),

Gene: AloeVera\_9 Start: 6089, Stop: 5751, Start Num: 8  
Candidate Starts for AloeVera\_9:  
(4, 6161), (Start: 8 @6089 has 41 MA's), (15, 5978), (18, 5939), (28, 5798),

Gene: ArMaWen\_9 Start: 6356, Stop: 6033, Start Num: 8  
Candidate Starts for ArMaWen\_9:  
(5, 6446), (Start: 8 @6356 has 41 MA's), (10, 6305), (14, 6260), (16, 6242), (26, 6086),

Gene: Ashton\_9 Start: 6093, Stop: 5755, Start Num: 8  
Candidate Starts for Ashton\_9:  
(4, 6165), (Start: 8 @6093 has 41 MA's), (9, 6054), (15, 5982), (18, 5943), (19, 5901), (28, 5802),

Gene: Astartes\_9 Start: 6131, Stop: 5775, Start Num: 8  
Candidate Starts for Astartes\_9:  
(Start: 8 @6131 has 41 MA's), (9, 6092), (11, 6077), (18, 5981), (23, 5873), (25, 5864), (27, 5825),

Gene: Atraxi\_9 Start: 6096, Stop: 5740, Start Num: 8  
Candidate Starts for Atraxi\_9:  
(Start: 8 @6096 has 41 MA's), (9, 6057), (11, 6042), (25, 5829), (27, 5790),

Gene: Barroma\_9 Start: 6089, Stop: 5751, Start Num: 8  
Candidate Starts for Barroma\_9:  
(4, 6161), (Start: 8 @6089 has 41 MA's), (9, 6050), (15, 5978), (18, 5939), (28, 5798),

Gene: Biozilla\_9 Start: 6310, Stop: 5987, Start Num: 8  
Candidate Starts for Biozilla\_9:  
(1, 6478), (2, 6460), (3, 6427), (Start: 8 @6310 has 41 MA's), (10, 6259), (12, 6244), (16, 6196), (21, 6088), (26, 6040), (27, 6022),

Gene: Birdfeeder\_9 Start: 6368, Stop: 6045, Start Num: 8  
Candidate Starts for Birdfeeder\_9:  
(Start: 8 @6368 has 41 MA's), (10, 6317), (16, 6254), (26, 6098),

Gene: Corn21\_9 Start: 6384, Stop: 6061, Start Num: 8  
Candidate Starts for Corn21\_9:  
(6, 6450), (Start: 8 @6384 has 41 MA's), (10, 6333), (14, 6288), (16, 6270), (20, 6165), (26, 6114),

Gene: CrunchyBoi\_10 Start: 6445, Stop: 6122, Start Num: 8  
Candidate Starts for CrunchyBoi\_10:  
(1, 6613), (3, 6562), (Start: 8 @6445 has 41 MA's), (10, 6394), (12, 6379), (16, 6331), (21, 6223), (26, 6175), (27, 6157),

Gene: Dashyla\_9 Start: 6362, Stop: 6042, Start Num: 8  
Candidate Starts for Dashyla\_9:  
(5, 6452), (Start: 8 @6362 has 41 MA's), (10, 6311), (12, 6296), (16, 6248), (24, 6107),

Gene: DumpQuist\_9 Start: 6359, Stop: 6036, Start Num: 8

Candidate Starts for DumpQuist\_9:

(Start: 8 @6359 has 41 MA's), (10, 6308), (14, 6263), (16, 6245), (20, 6140), (26, 6089),

Gene: EugeneKrabs\_9 Start: 6127, Stop: 5798, Start Num: 8

Candidate Starts for EugeneKrabs\_9:

(Start: 8 @6127 has 41 MA's), (10, 6073), (18, 5974), (20, 5905), (22, 5881), (27, 5836),

Gene: Fede\_9 Start: 6342, Stop: 6010, Start Num: 8

Candidate Starts for Fede\_9:

(Start: 8 @6342 has 41 MA's), (9, 6303), (10, 6291), (13, 6273), (18, 6192), (24, 6087),

Gene: Fullmetal\_9 Start: 6128, Stop: 5772, Start Num: 8

Candidate Starts for Fullmetal\_9:

(Start: 8 @6128 has 41 MA's), (9, 6089), (11, 6074), (17, 5987), (18, 5978), (23, 5870), (25, 5861), (27, 5822),

Gene: HitchHiker\_10 Start: 6310, Stop: 5987, Start Num: 8

Candidate Starts for HitchHiker\_10:

(1, 6478), (2, 6460), (3, 6427), (Start: 8 @6310 has 41 MA's), (10, 6259), (12, 6244), (16, 6196), (21, 6088), (26, 6040), (27, 6022),

Gene: JessellCookie\_9 Start: 6219, Stop: 5899, Start Num: 8

Candidate Starts for JessellCookie\_9:

(Start: 8 @6219 has 41 MA's), (10, 6168), (11, 6165), (20, 6000), (27, 5931),

Gene: JordanFarm\_9 Start: 6089, Stop: 5751, Start Num: 8

Candidate Starts for JordanFarm\_9:

(4, 6161), (Start: 8 @6089 has 41 MA's), (9, 6050), (15, 5978), (18, 5939), (28, 5798),

Gene: KingKamren\_9 Start: 6124, Stop: 5798, Start Num: 8

Candidate Starts for KingKamren\_9:

(Start: 8 @6124 has 41 MA's), (10, 6073), (20, 5905), (27, 5836),

Gene: LilyLou\_9 Start: 6368, Stop: 6045, Start Num: 8

Candidate Starts for LilyLou\_9:

(Start: 8 @6368 has 41 MA's), (10, 6317), (14, 6272), (16, 6254), (20, 6149), (26, 6098),

Gene: Mazun\_9 Start: 6131, Stop: 5775, Start Num: 8

Candidate Starts for Mazun\_9:

(Start: 8 @6131 has 41 MA's), (9, 6092), (11, 6077), (18, 5981), (25, 5864), (27, 5825),

Gene: MiamiPanther\_9 Start: 6219, Stop: 5899, Start Num: 8

Candidate Starts for MiamiPanther\_9:

(Start: 8 @6219 has 41 MA's), (10, 6168), (11, 6165), (20, 6000), (27, 5931),

Gene: Moleficient\_9 Start: 6125, Stop: 5769, Start Num: 8

Candidate Starts for Moleficient\_9:

(Start: 8 @6125 has 41 MA's), (9, 6086), (11, 6071), (18, 5975), (23, 5867), (25, 5858), (27, 5819),

Gene: Morrill\_9 Start: 6080, Stop: 5724, Start Num: 8

Candidate Starts for Morrill\_9:

(Start: 8 @6080 has 41 MA's), (9, 6041), (11, 6026), (25, 5813), (27, 5774),

Gene: Oatly\_9 Start: 6310, Stop: 5987, Start Num: 8

Candidate Starts for Oatly\_9:

(1, 6478), (2, 6460), (3, 6427), (Start: 8 @6310 has 41 MA's), (10, 6259), (12, 6244), (16, 6196), (21, 6088), (26, 6040), (27, 6022),

Gene: Pabst\_9 Start: 6171, Stop: 5848, Start Num: 8

Candidate Starts for Pabst\_9:

(7, 6219), (Start: 8 @6171 has 41 MA's), (9, 6132), (10, 6120), (21, 5949), (24, 5916), (27, 5883), (29, 5865),

Gene: Pharky\_9 Start: 6092, Stop: 5736, Start Num: 8

Candidate Starts for Pharky\_9:

(Start: 8 @6092 has 41 MA's), (9, 6053), (11, 6038), (17, 5951), (18, 5942), (23, 5834), (25, 5825), (27, 5786),

Gene: Phedro\_9 Start: 6092, Stop: 5736, Start Num: 8

Candidate Starts for Phedro\_9:

(Start: 8 @6092 has 41 MA's), (9, 6053), (11, 6038), (17, 5951), (18, 5942), (23, 5834), (25, 5825), (27, 5786),

Gene: Phogo\_9 Start: 6365, Stop: 6045, Start Num: 8

Candidate Starts for Phogo\_9:

(5, 6455), (Start: 8 @6365 has 41 MA's), (10, 6314), (12, 6299), (16, 6251), (24, 6110),

Gene: Phractured\_9 Start: 6092, Stop: 5736, Start Num: 8

Candidate Starts for Phractured\_9:

(Start: 8 @6092 has 41 MA's), (9, 6053), (11, 6038), (17, 5951), (18, 5942), (23, 5834), (25, 5825), (27, 5786),

Gene: PhriedRice\_9 Start: 6092, Stop: 5736, Start Num: 8

Candidate Starts for PhriedRice\_9:

(Start: 8 @6092 has 41 MA's), (9, 6053), (11, 6038), (18, 5942), (23, 5834), (25, 5825), (27, 5786),

Gene: PineapplePluto\_10 Start: 6454, Stop: 6131, Start Num: 8

Candidate Starts for PineapplePluto\_10:

(1, 6622), (3, 6571), (Start: 8 @6454 has 41 MA's), (10, 6403), (12, 6388), (16, 6340), (21, 6232), (26, 6184), (27, 6166),

Gene: RicoCaldo\_9 Start: 6122, Stop: 5766, Start Num: 8

Candidate Starts for RicoCaldo\_9:

(Start: 8 @6122 has 41 MA's), (9, 6083), (11, 6068), (18, 5972), (19, 5930), (23, 5864), (25, 5855), (27, 5816),

Gene: ShyRosie\_9 Start: 6089, Stop: 5751, Start Num: 8

Candidate Starts for ShyRosie\_9:

(4, 6161), (Start: 8 @6089 has 41 MA's), (9, 6050), (15, 5978), (18, 5939), (28, 5798),

Gene: StagePhright\_9 Start: 6092, Stop: 5736, Start Num: 8

Candidate Starts for StagePhright\_9:

(Start: 8 @6092 has 41 MA's), (9, 6053), (11, 6038), (17, 5951), (18, 5942), (23, 5834), (25, 5825), (27, 5786),

Gene: Stormbreaker\_9 Start: 6347, Stop: 6027, Start Num: 8  
Candidate Starts for Stormbreaker\_9:  
(3, 6467), (5, 6437), (Start: 8 @6347 has 41 MA's), (10, 6296), (12, 6281), (16, 6233), (24, 6092),

Gene: SwissCheezer\_9 Start: 6356, Stop: 6036, Start Num: 8  
Candidate Starts for SwissCheezer\_9:  
(5, 6446), (Start: 8 @6356 has 41 MA's), (10, 6305), (12, 6290), (16, 6242), (24, 6101),

Gene: ThirteenKH\_9 Start: 6080, Stop: 5724, Start Num: 8  
Candidate Starts for ThirteenKH\_9:  
(Start: 8 @6080 has 41 MA's), (9, 6041), (11, 6026), (18, 5930), (25, 5813), (27, 5774),

Gene: TicTac\_9 Start: 6319, Stop: 5996, Start Num: 8  
Candidate Starts for TicTac\_9:  
(1, 6487), (3, 6436), (Start: 8 @6319 has 41 MA's), (10, 6268), (12, 6253), (16, 6205), (21, 6097), (26, 6049), (27, 6031),

Gene: TinyTimothy\_9 Start: 6219, Stop: 5899, Start Num: 8  
Candidate Starts for TinyTimothy\_9:  
(Start: 8 @6219 has 41 MA's), (9, 6180), (10, 6168), (20, 6000), (27, 5931),

Gene: TrippleS\_9 Start: 6080, Stop: 5724, Start Num: 8  
Candidate Starts for TrippleS\_9:  
(Start: 8 @6080 has 41 MA's), (9, 6041), (11, 6026), (18, 5930), (25, 5813), (27, 5774),

Gene: Truong\_9 Start: 6089, Stop: 5751, Start Num: 8  
Candidate Starts for Truong\_9:  
(4, 6161), (Start: 8 @6089 has 41 MA's), (9, 6050), (15, 5978), (18, 5939), (28, 5798),

Gene: Unphazed\_9 Start: 6368, Stop: 6045, Start Num: 8  
Candidate Starts for Unphazed\_9:  
(Start: 8 @6368 has 41 MA's), (10, 6317), (14, 6272), (16, 6254), (20, 6149), (26, 6098),

Gene: Waterlily\_9 Start: 6089, Stop: 5751, Start Num: 8  
Candidate Starts for Waterlily\_9:  
(4, 6161), (Start: 8 @6089 has 41 MA's), (9, 6050), (15, 5978), (18, 5939), (19, 5897), (28, 5798),

Gene: Wesak\_9 Start: 6219, Stop: 5899, Start Num: 8  
Candidate Starts for Wesak\_9:  
(Start: 8 @6219 has 41 MA's), (9, 6180), (10, 6168), (11, 6165), (20, 6000), (27, 5931),

Gene: Xitlalli\_9 Start: 6353, Stop: 6033, Start Num: 8  
Candidate Starts for Xitlalli\_9:  
(5, 6443), (Start: 8 @6353 has 41 MA's), (10, 6302), (12, 6287), (16, 6239), (24, 6098),

Gene: Yafa\_9 Start: 6095, Stop: 5739, Start Num: 8  
Candidate Starts for Yafa\_9:  
(Start: 8 @6095 has 41 MA's), (9, 6056), (11, 6041), (18, 5945), (25, 5828), (27, 5789),

Gene: YellowPanda\_9 Start: 6219, Stop: 5899, Start Num: 8  
Candidate Starts for YellowPanda\_9:  
(Start: 8 @6219 has 41 MA's), (9, 6180), (10, 6168), (11, 6165), (20, 6000), (27, 5931),

Gene: Zhengyi\_9 Start: 6127, Stop: 5798, Start Num: 8

Candidate Starts for Zhengyi\_9:

(Start: 8 @6127 has 41 MA's), (10, 6073), (18, 5974), (20, 5905), (22, 5881), (27, 5836),