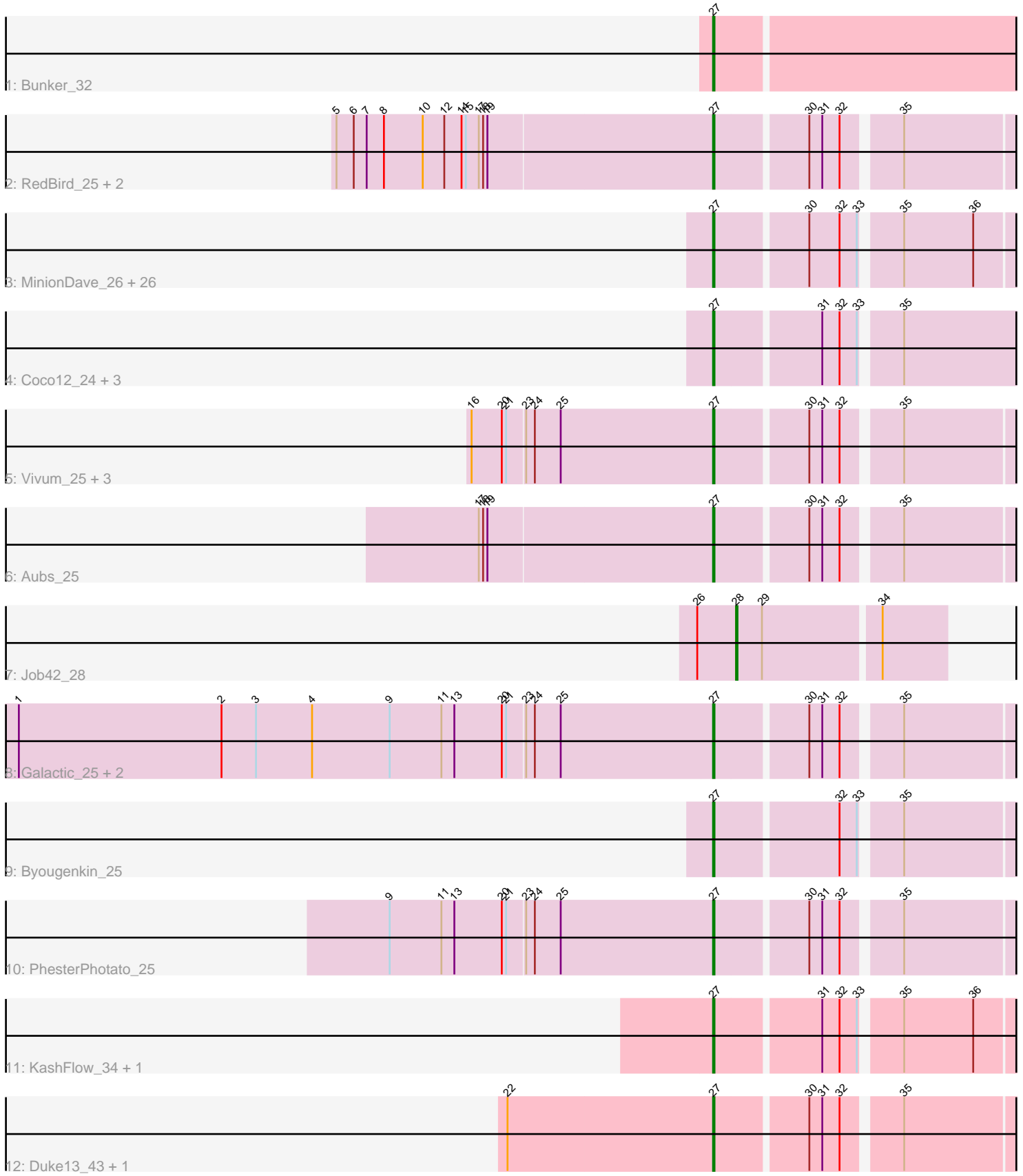


Pham 203021



Note: Tracks are now grouped by subcluster and scaled. Switching in subcluster is indicated by changes in track color. Track scale is now set by default to display the region 30 bp upstream of start 1 to 30 bp downstream of the last possible start. If this default region is judged to be packed too tightly with annotated starts, the track will be further scaled to only show that region of the ORF with annotated starts. This action will be indicated by adding "Zoomed" to the title. For starts, yellow indicates the location of called starts comprised solely of Glimmer/GeneMark auto-annotations, green indicates the location of called starts with at least 1 manual gene annotation.

Pham 203021 Report

This analysis was run 01/18/25 on database version 583.

Pham number 203021 has 50 members, 3 are drafts.

Phages represented in each track:

- Track 1 : Bunker_32
- Track 2 : RedBird_25, BAKA_43, LittleE_46
- Track 3 : MinionDave_26, Brushbloom_27, MisterCuddles_25, Whatsapiecost_25, CaptainTrips_26, Girr_25, Tweety_26, Sassafras_25, Taj_25, PopTart_25, MilleniumForce_26, SassyB_25, Gonephishing_41, Bobi_27, Mutaforma13_25, Wee_26, BodEinwohner17_25, Hegedechwinu_26, Empress_26, JalFarm20_27, Wachhund_25, OldBen_25, Donkeykong_25, Flathead_26, Ruby_25, Seagreen_26, Juice456_27
- Track 4 : Coco12_24, Shauna1_22, Kingsley_23, Phanphagia_22
- Track 5 : Vivum_25, WillSterrel_26, Optimus_44, IrishSherpFalk_26
- Track 6 : Aubs_25
- Track 7 : Job42_28
- Track 8 : Galactic_25, Batiatus_25, Krakatau_26
- Track 9 : Byougenkin_25
- Track 10 : PhesterPhotato_25
- Track 11 : KashFlow_34, Hannaconda_37
- Track 12 : Duke13_43, Wanda_46

Summary of Final Annotations (See graph section above for start numbers):

The start number called the most often in the published annotations is 27, it was called in 46 of the 47 non-draft genes in the pham.

Genes that call this "Most Annotated" start:

- Aubs_25, BAKA_43, Batiatus_25, Bobi_27, BodEinwohner17_25, Brushbloom_27, Bunker_32, Byougenkin_25, CaptainTrips_26, Coco12_24, Donkeykong_25, Duke13_43, Empress_26, Flathead_26, Galactic_25, Girr_25, Gonephishing_41, Hannaconda_37, Hegedechwinu_26, IrishSherpFalk_26, JalFarm20_27, Juice456_27, KashFlow_34, Kingsley_23, Krakatau_26, LittleE_46, MilleniumForce_26, MinionDave_26, MisterCuddles_25, Mutaforma13_25, OldBen_25, Optimus_44, Phanphagia_22, PhesterPhotato_25, PopTart_25, RedBird_25, Ruby_25, Sassafras_25, SassyB_25, Seagreen_26, Shauna1_22, Taj_25, Tweety_26, Vivum_25, Wachhund_25, Wanda_46, Wee_26, Whatsapiecost_25, WillSterrel_26,

Genes that have the "Most Annotated" start but do not call it:

-

Genes that do not have the "Most Annotated" start:

- Job42_28,

Summary by start number:

Start 27:

- Found in 49 of 50 (98.0%) of genes in pham
- Manual Annotations of this start: 46 of 47
- Called 100.0% of time when present
- Phage (with cluster) where this start called: Aubs_25 (F1), BAKA_43 (J), Batiatus_25 (F1), Bobi_27 (F1), BodEinwohner17_25 (F1), Brushbloom_27 (F1), Bunker_32 (DB), Byougenkin_25 (F1), CaptainTrips_26 (F1), Coco12_24 (F1), Donkeykong_25 (F1), Duke13_43 (J), Empress_26 (F1), Flathead_26 (F1), Galactic_25 (F1), Girr_25 (F1), Gonephishing_41 (J), Hannaconda_37 (J), Hegedechwinu_26 (F1), IrishSherpFalk_26 (F1), JalFarm20_27 (F1), Juice456_27 (F1), KashFlow_34 (J), Kingsley_23 (F1), Krakatau_26 (F1), LittleE_46 (J), MilleniumForce_26 (F1), MinionDave_26 (F1), MisterCuddles_25 (F1), Mutaforma13_25 (F1), OldBen_25 (F1), Optimus_44 (J), Phanphagia_22 (F1), PhesterPhotato_25 (F1), PopTart_25 (F1), RedBird_25 (F1), Ruby_25 (F1), Sassafras_25 (F1), SassyB_25 (F1), Seagreen_26 (F1), Shauna1_22 (F1), Taj_25 (F1), Tweety_26 (F1), Vivum_25 (F1), Wachhund_25 (F1), Wanda_46 (J), Wee_26 (F1), Whatsapiecost_25 (F1), WillSterrel_26 (F1),

Start 28:

- Found in 1 of 50 (2.0%) of genes in pham
- Manual Annotations of this start: 1 of 47
- Called 100.0% of time when present
- Phage (with cluster) where this start called: Job42_28 (F1),

Summary by clusters:

There are 3 clusters represented in this pham: F1, J, DB,

Info for manual annotations of cluster DB:

- Start number 27 was manually annotated 1 time for cluster DB.

Info for manual annotations of cluster F1:

- Start number 27 was manually annotated 38 times for cluster F1.
- Start number 28 was manually annotated 1 time for cluster F1.

Info for manual annotations of cluster J:

- Start number 27 was manually annotated 7 times for cluster J.

Gene Information:

Gene: Aubs_25 Start: 25430, Stop: 25239, Start Num: 27

Candidate Starts for Aubs_25:

(17, 25589), (18, 25586), (19, 25583), (Start: 27 @25430 has 46 MA's), (30, 25370), (31, 25361), (32, 25349), (35, 25313),

Gene: BAKA_43 Start: 37783, Stop: 37592, Start Num: 27

Candidate Starts for BAKA_43:

(5, 38041), (6, 38029), (7, 38020), (8, 38008), (10, 37981), (12, 37966), (14, 37954), (15, 37951), (17, 37942), (18, 37939), (19, 37936), (Start: 27 @37783 has 46 MA's), (30, 37723), (31, 37714), (32, 37702), (35, 37666),

Gene: Batiatus_25 Start: 25321, Stop: 25130, Start Num: 27

Candidate Starts for Batiatus_25:

(1, 25801), (2, 25660), (3, 25636), (4, 25597), (9, 25543), (11, 25507), (13, 25498), (20, 25465), (21, 25462), (23, 25450), (24, 25444), (25, 25426), (Start: 27 @25321 has 46 MA's), (30, 25261), (31, 25252), (32, 25240), (35, 25204),

Gene: Bobi_27 Start: 26029, Stop: 25838, Start Num: 27

Candidate Starts for Bobi_27:

(Start: 27 @26029 has 46 MA's), (30, 25969), (32, 25948), (33, 25936), (35, 25912), (36, 25864),

Gene: BodEinwohner17_25 Start: 25613, Stop: 25422, Start Num: 27

Candidate Starts for BodEinwohner17_25:

(Start: 27 @25613 has 46 MA's), (30, 25553), (32, 25532), (33, 25520), (35, 25496), (36, 25448),

Gene: Brushbloom_27 Start: 25324, Stop: 25133, Start Num: 27

Candidate Starts for Brushbloom_27:

(Start: 27 @25324 has 46 MA's), (30, 25264), (32, 25243), (33, 25231), (35, 25207), (36, 25159),

Gene: Bunker_32 Start: 28246, Stop: 28043, Start Num: 27

Candidate Starts for Bunker_32:

(Start: 27 @28246 has 46 MA's),

Gene: Byougenkin_25 Start: 25308, Stop: 25117, Start Num: 27

Candidate Starts for Byougenkin_25:

(Start: 27 @25308 has 46 MA's), (32, 25227), (33, 25215), (35, 25191),

Gene: CaptainTrips_26 Start: 25686, Stop: 25495, Start Num: 27

Candidate Starts for CaptainTrips_26:

(Start: 27 @25686 has 46 MA's), (30, 25626), (32, 25605), (33, 25593), (35, 25569), (36, 25521),

Gene: Coco12_24 Start: 24789, Stop: 24589, Start Num: 27

Candidate Starts for Coco12_24:

(Start: 27 @24789 has 46 MA's), (31, 24720), (32, 24708), (33, 24696), (35, 24672),

Gene: Donkeykong_25 Start: 25459, Stop: 25268, Start Num: 27

Candidate Starts for Donkeykong_25:

(Start: 27 @25459 has 46 MA's), (30, 25399), (32, 25378), (33, 25366), (35, 25342), (36, 25294),

Gene: Duke13_43 Start: 37672, Stop: 37481, Start Num: 27

Candidate Starts for Duke13_43:

(22, 37813), (Start: 27 @37672 has 46 MA's), (30, 37612), (31, 37603), (32, 37591), (35, 37555),

Gene: Empress_26 Start: 26632, Stop: 26441, Start Num: 27

Candidate Starts for Empress_26:

(Start: 27 @26632 has 46 MA's), (30, 26572), (32, 26551), (33, 26539), (35, 26515), (36, 26467),

Gene: Flathead_26 Start: 25308, Stop: 25117, Start Num: 27

Candidate Starts for Flathead_26:

(Start: 27 @25308 has 46 MA's), (30, 25248), (32, 25227), (33, 25215), (35, 25191), (36, 25143),

Gene: Galactic_25 Start: 25267, Stop: 25076, Start Num: 27

Candidate Starts for Galactic_25:

(1, 25747), (2, 25606), (3, 25582), (4, 25543), (9, 25489), (11, 25453), (13, 25444), (20, 25411), (21, 25408), (23, 25396), (24, 25390), (25, 25372), (Start: 27 @25267 has 46 MA's), (30, 25207), (31, 25198), (32, 25186), (35, 25150),

Gene: Girr_25 Start: 25258, Stop: 25067, Start Num: 27

Candidate Starts for Girr_25:

(Start: 27 @25258 has 46 MA's), (30, 25198), (32, 25177), (33, 25165), (35, 25141), (36, 25093),

Gene: Gonephishing_41 Start: 35953, Stop: 35762, Start Num: 27

Candidate Starts for Gonephishing_41:

(Start: 27 @35953 has 46 MA's), (30, 35893), (32, 35872), (33, 35860), (35, 35836), (36, 35788),

Gene: Hannaconda_37 Start: 33327, Stop: 33133, Start Num: 27

Candidate Starts for Hannaconda_37:

(Start: 27 @33327 has 46 MA's), (31, 33258), (32, 33246), (33, 33234), (35, 33210), (36, 33162),

Gene: Hegedechwinu_26 Start: 25289, Stop: 25098, Start Num: 27

Candidate Starts for Hegedechwinu_26:

(Start: 27 @25289 has 46 MA's), (30, 25229), (32, 25208), (33, 25196), (35, 25172), (36, 25124),

Gene: IrishSherpFalk_26 Start: 26630, Stop: 26439, Start Num: 27

Candidate Starts for IrishSherpFalk_26:

(16, 26795), (20, 26774), (21, 26771), (23, 26759), (24, 26753), (25, 26735), (Start: 27 @26630 has 46 MA's), (30, 26570), (31, 26561), (32, 26549), (35, 26513),

Gene: JalFarm20_27 Start: 25810, Stop: 25619, Start Num: 27

Candidate Starts for JalFarm20_27:

(Start: 27 @25810 has 46 MA's), (30, 25750), (32, 25729), (33, 25717), (35, 25693), (36, 25645),

Gene: Job42_28 Start: 27005, Stop: 26865, Start Num: 28

Candidate Starts for Job42_28:

(26, 27032), (Start: 28 @27005 has 1 MA's), (29, 26987), (34, 26909),

Gene: Juice456_27 Start: 26560, Stop: 26369, Start Num: 27

Candidate Starts for Juice456_27:

(Start: 27 @26560 has 46 MA's), (30, 26500), (32, 26479), (33, 26467), (35, 26443), (36, 26395),

Gene: KashFlow_34 Start: 32948, Stop: 32754, Start Num: 27

Candidate Starts for KashFlow_34:

(Start: 27 @32948 has 46 MA's), (31, 32879), (32, 32867), (33, 32855), (35, 32831), (36, 32783),

Gene: Kingsley_23 Start: 24253, Stop: 24053, Start Num: 27

Candidate Starts for Kingsley_23:

(Start: 27 @24253 has 46 MA's), (31, 24184), (32, 24172), (33, 24160), (35, 24136),

Gene: Krakatau_26 Start: 25968, Stop: 25777, Start Num: 27

Candidate Starts for Krakatau_26:

(1, 26448), (2, 26307), (3, 26283), (4, 26244), (9, 26190), (11, 26154), (13, 26145), (20, 26112), (21, 26109), (23, 26097), (24, 26091), (25, 26073), (Start: 27 @25968 has 46 MA's), (30, 25908), (31, 25899), (32, 25887), (35, 25851),

Gene: LittleE_46 Start: 38863, Stop: 38672, Start Num: 27

Candidate Starts for LittleE_46:

(5, 39121), (6, 39109), (7, 39100), (8, 39088), (10, 39061), (12, 39046), (14, 39034), (15, 39031), (17, 39022), (18, 39019), (19, 39016), (Start: 27 @38863 has 46 MA's), (30, 38803), (31, 38794), (32, 38782), (35, 38746),

Gene: MilleniumForce_26 Start: 26251, Stop: 26060, Start Num: 27

Candidate Starts for MilleniumForce_26:

(Start: 27 @26251 has 46 MA's), (30, 26191), (32, 26170), (33, 26158), (35, 26134), (36, 26086),

Gene: MinionDave_26 Start: 25673, Stop: 25482, Start Num: 27

Candidate Starts for MinionDave_26:

(Start: 27 @25673 has 46 MA's), (30, 25613), (32, 25592), (33, 25580), (35, 25556), (36, 25508),

Gene: MisterCuddles_25 Start: 25258, Stop: 25067, Start Num: 27

Candidate Starts for MisterCuddles_25:

(Start: 27 @25258 has 46 MA's), (30, 25198), (32, 25177), (33, 25165), (35, 25141), (36, 25093),

Gene: Mutaforma13_25 Start: 25488, Stop: 25297, Start Num: 27

Candidate Starts for Mutaforma13_25:

(Start: 27 @25488 has 46 MA's), (30, 25428), (32, 25407), (33, 25395), (35, 25371), (36, 25323),

Gene: OldBen_25 Start: 25253, Stop: 25062, Start Num: 27

Candidate Starts for OldBen_25:

(Start: 27 @25253 has 46 MA's), (30, 25193), (32, 25172), (33, 25160), (35, 25136), (36, 25088),

Gene: Optimus_44 Start: 38666, Stop: 38475, Start Num: 27

Candidate Starts for Optimus_44:

(16, 38831), (20, 38810), (21, 38807), (23, 38795), (24, 38789), (25, 38771), (Start: 27 @38666 has 46 MA's), (30, 38606), (31, 38597), (32, 38585), (35, 38549),

Gene: Phanphagia_22 Start: 24447, Stop: 24247, Start Num: 27

Candidate Starts for Phanphagia_22:

(Start: 27 @24447 has 46 MA's), (31, 24378), (32, 24366), (33, 24354), (35, 24330),

Gene: PhesterPhotato_25 Start: 25291, Stop: 25100, Start Num: 27

Candidate Starts for PhesterPhotato_25:

(9, 25513), (11, 25477), (13, 25468), (20, 25435), (21, 25432), (23, 25420), (24, 25414), (25, 25396), (Start: 27 @25291 has 46 MA's), (30, 25231), (31, 25222), (32, 25210), (35, 25174),

Gene: PopTart_25 Start: 25487, Stop: 25296, Start Num: 27

Candidate Starts for PopTart_25:

(Start: 27 @25487 has 46 MA's), (30, 25427), (32, 25406), (33, 25394), (35, 25370), (36, 25322),

Gene: RedBird_25 Start: 25230, Stop: 25039, Start Num: 27

Candidate Starts for RedBird_25:

(5, 25488), (6, 25476), (7, 25467), (8, 25455), (10, 25428), (12, 25413), (14, 25401), (15, 25398), (17, 25389), (18, 25386), (19, 25383), (Start: 27 @25230 has 46 MA's), (30, 25170), (31, 25161), (32, 25149), (35, 25113),

Gene: Ruby_25 Start: 25258, Stop: 25067, Start Num: 27

Candidate Starts for Ruby_25:

(Start: 27 @25258 has 46 MA's), (30, 25198), (32, 25177), (33, 25165), (35, 25141), (36, 25093),

Gene: Sassafras_25 Start: 25414, Stop: 25223, Start Num: 27

Candidate Starts for Sassafras_25:

(Start: 27 @25414 has 46 MA's), (30, 25354), (32, 25333), (33, 25321), (35, 25297), (36, 25249),

Gene: SassyB_25 Start: 25487, Stop: 25296, Start Num: 27

Candidate Starts for SassyB_25:

(Start: 27 @25487 has 46 MA's), (30, 25427), (32, 25406), (33, 25394), (35, 25370), (36, 25322),

Gene: Seagreen_26 Start: 25284, Stop: 25093, Start Num: 27

Candidate Starts for Seagreen_26:

(Start: 27 @25284 has 46 MA's), (30, 25224), (32, 25203), (33, 25191), (35, 25167), (36, 25119),

Gene: Shauna1_22 Start: 24450, Stop: 24250, Start Num: 27

Candidate Starts for Shauna1_22:

(Start: 27 @24450 has 46 MA's), (31, 24381), (32, 24369), (33, 24357), (35, 24333),

Gene: Taj_25 Start: 25474, Stop: 25283, Start Num: 27

Candidate Starts for Taj_25:

(Start: 27 @25474 has 46 MA's), (30, 25414), (32, 25393), (33, 25381), (35, 25357), (36, 25309),

Gene: Tweety_26 Start: 25492, Stop: 25301, Start Num: 27

Candidate Starts for Tweety_26:

(Start: 27 @25492 has 46 MA's), (30, 25432), (32, 25411), (33, 25399), (35, 25375), (36, 25327),

Gene: Vivum_25 Start: 25217, Stop: 25026, Start Num: 27

Candidate Starts for Vivum_25:

(16, 25382), (20, 25361), (21, 25358), (23, 25346), (24, 25340), (25, 25322), (Start: 27 @25217 has 46 MA's), (30, 25157), (31, 25148), (32, 25136), (35, 25100),

Gene: Wachhund_25 Start: 25465, Stop: 25274, Start Num: 27

Candidate Starts for Wachhund_25:

(Start: 27 @25465 has 46 MA's), (30, 25405), (32, 25384), (33, 25372), (35, 25348), (36, 25300),

Gene: Wanda_46 Start: 37698, Stop: 37507, Start Num: 27

Candidate Starts for Wanda_46:

(22, 37839), (Start: 27 @37698 has 46 MA's), (30, 37638), (31, 37629), (32, 37617), (35, 37581),

Gene: Wee_26 Start: 26013, Stop: 25822, Start Num: 27

Candidate Starts for Wee_26:

(Start: 27 @26013 has 46 MA's), (30, 25953), (32, 25932), (33, 25920), (35, 25896), (36, 25848),

Gene: Whatsapiecost_25 Start: 25487, Stop: 25296, Start Num: 27

Candidate Starts for Whatsapiecost_25:

(Start: 27 @25487 has 46 MA's), (30, 25427), (32, 25406), (33, 25394), (35, 25370), (36, 25322),

Gene: WillSterrel_26 Start: 26663, Stop: 26472, Start Num: 27

Candidate Starts for WillSterrel_26:

(16, 26828), (20, 26807), (21, 26804), (23, 26792), (24, 26786), (25, 26768), (Start: 27 @26663 has 46 MA's), (30, 26603), (31, 26594), (32, 26582), (35, 26546),