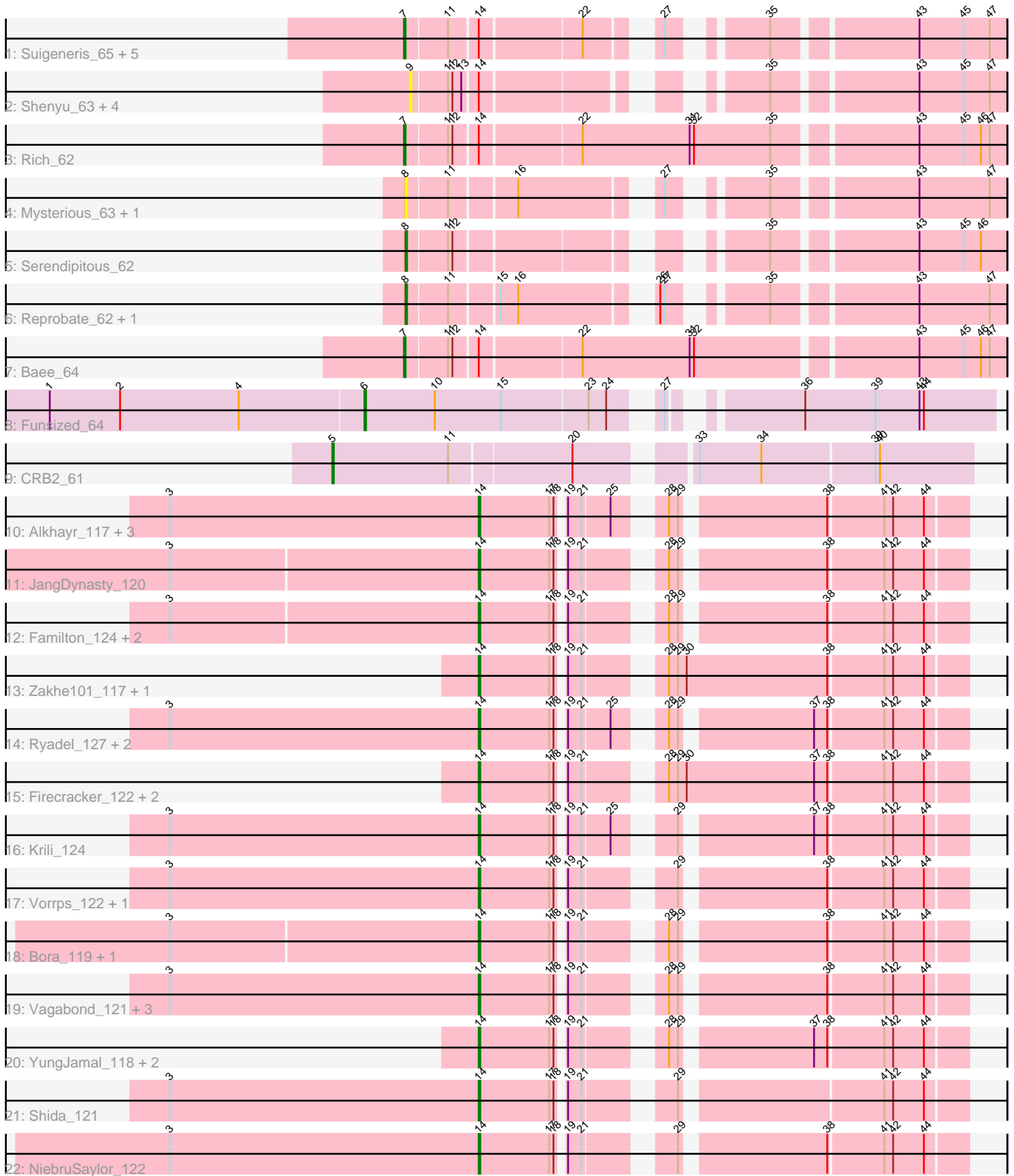


Pham 203022



Note: Tracks are now grouped by subcluster and scaled. Switching in subcluster is indicated by changes in track color. Track scale is now set by default to display the region 30 bp upstream of start 1 to 30 bp downstream of the last possible start. If this default region is judged to be packed too tightly with annotated starts, the track will be further scaled to only show that region of the ORF with annotated starts. This action will be indicated by adding "Zoomed" to the title. For starts, yellow indicates the location of called starts comprised solely of Glimmer/GeneMark auto-annotations, green indicates the location of called starts with at least 1 manual gene annotation.

Pham 203022 Report

This analysis was run 01/18/25 on database version 583.

Pham number 203022 has 50 members, 11 are drafts.

Phages represented in each track:

- Track 1 : Suigeneris_65, SirJeffery_63, Acadian_64, Rita130_63, EastView9101_63, Donny_65
- Track 2 : Shenyu_63, DigitDog_64, Nangang_63, KarasumaRum_63, StinkyVeggy_63
- Track 3 : Rich_62
- Track 4 : Mysterious_63, Nehemiah_62
- Track 5 : Serendipitous_62
- Track 6 : Reprobate_62, Phelemich_61
- Track 7 : Bae_64
- Track 8 : Funsized_64
- Track 9 : CRB2_61
- Track 10 : Alkhayr_117, Winget_122, FoulBall_121, Schuy_122
- Track 11 : JangDynasty_120
- Track 12 : Familton_124, SchoolBus_123, Zebo_119
- Track 13 : Zakhe101_117, Dylan_116
- Track 14 : Ryadel_127, Blessica_121, MadKillah_125
- Track 15 : Firecracker_122, Wildflower_117, Ashwin_117
- Track 16 : Krili_124
- Track 17 : Vorrps_122, Mori_122
- Track 18 : Bora_119, TelAviv_118
- Track 19 : Vagabond_121, Idergollasper_126, Catdawg_123, Murai_122
- Track 20 : YungJamal_118, Smooch_120, Corndog_118
- Track 21 : Shida_121
- Track 22 : NiebruSaylor_122

Summary of Final Annotations (See graph section above for start numbers):

The start number called the most often in the published annotations is 14, it was called in 28 of the 39 non-draft genes in the pham.

Genes that call this "Most Annotated" start:

- Alkhayr_117, Ashwin_117, Blessica_121, Bora_119, Catdawg_123, Corndog_118, Dylan_116, Familton_124, Firecracker_122, FoulBall_121, Idergollasper_126, JangDynasty_120, Krili_124, MadKillah_125, Mori_122, Murai_122,

NiebruSaylor_122, Ryadel_127, SchoolBus_123, Schuy_122, Shida_121, Smooch_120, TelAviv_118, Vagabond_121, Vorrps_122, Wildflower_117, Winget_122, YungJamal_118, Zakhe101_117, Zebo_119,

Genes that have the "Most Annotated" start but do not call it:

- Acadian_64, Bae_64, DigitDog_64, Donny_65, EastView9101_63, KarasumaRum_63, Nangang_63, Rich_62, Rita130_63, Shenyu_63, SirJeffery_63, StinkyVeggy_63, Suigeneris_65,

Genes that do not have the "Most Annotated" start:

- CRB2_61, Funsized_64, Mysterious_63, Nehemiah_62, Phelemich_61, Reprobate_62, Serendipitous_62,

Summary by start number:

Start 5:

- Found in 1 of 50 (2.0%) of genes in pham
- Manual Annotations of this start: 1 of 39
- Called 100.0% of time when present
- Phage (with cluster) where this start called: CRB2_61 (B9),

Start 6:

- Found in 1 of 50 (2.0%) of genes in pham
- Manual Annotations of this start: 1 of 39
- Called 100.0% of time when present
- Phage (with cluster) where this start called: Funsized_64 (B9),

Start 7:

- Found in 8 of 50 (16.0%) of genes in pham
- Manual Annotations of this start: 6 of 39
- Called 100.0% of time when present
- Phage (with cluster) where this start called: Acadian_64 (B5), Bae_64 (B5), Donny_65 (B5), EastView9101_63 (B5), Rich_62 (B5), Rita130_63 (B5), SirJeffery_63 (B5), Suigeneris_65 (B5),

Start 8:

- Found in 5 of 50 (10.0%) of genes in pham
- Manual Annotations of this start: 3 of 39
- Called 100.0% of time when present
- Phage (with cluster) where this start called: Mysterious_63 (B5), Nehemiah_62 (B5), Phelemich_61 (B5), Reprobate_62 (B5), Serendipitous_62 (B5),

Start 9:

- Found in 5 of 50 (10.0%) of genes in pham
- No Manual Annotations of this start.
- Called 100.0% of time when present
- Phage (with cluster) where this start called: DigitDog_64 (B5), KarasumaRum_63 (B5), Nangang_63 (B5), Shenyu_63 (B5), StinkyVeggy_63 (B5),

Start 14:

- Found in 43 of 50 (86.0%) of genes in pham
- Manual Annotations of this start: 28 of 39
- Called 69.8% of time when present

• Phage (with cluster) where this start called: Alkhayr_117 (O), Ashwin_117 (O), Blessica_121 (O), Bora_119 (O), Catdawg_123 (O), Corndog_118 (O), Dylan_116 (O), Familton_124 (O), Firecracker_122 (O), FoulBall_121 (O), Idergollasper_126 (O), JangDynasty_120 (O), Krili_124 (O), MadKillah_125 (O), Mori_122 (O), Murai_122 (O), NiebruSaylor_122 (O), Ryadel_127 (O), SchoolBus_123 (O), Schuy_122 (O), Shida_121 (O), Smooch_120 (O), TelAviv_118 (O), Vagabond_121 (O), Vorrps_122 (O), Wildflower_117 (O), Winget_122 (O), YungJamal_118 (O), Zakhe101_117 (O), Zebo_119 (O),

Summary by clusters:

There are 3 clusters represented in this pham: B5, B9, O,

Info for manual annotations of cluster B5:

- Start number 7 was manually annotated 6 times for cluster B5.
- Start number 8 was manually annotated 3 times for cluster B5.

Info for manual annotations of cluster B9:

- Start number 5 was manually annotated 1 time for cluster B9.
- Start number 6 was manually annotated 1 time for cluster B9.

Info for manual annotations of cluster O:

- Start number 14 was manually annotated 28 times for cluster O.

Gene Information:

Gene: Acadian_64 Start: 56676, Stop: 56335, Start Num: 7

Candidate Starts for Acadian_64:

(Start: 7 @56676 has 6 MA's), (11, 56649), (Start: 14 @56631 has 28 MA's), (22, 56565), (27, 56532), (35, 56484), (43, 56394), (45, 56364), (47, 56346),

Gene: Alkhayr_117 Start: 68144, Stop: 67857, Start Num: 14

Candidate Starts for Alkhayr_117:

(3, 68354), (Start: 14 @68144 has 28 MA's), (17, 68096), (18, 68093), (19, 68090), (21, 68081), (25, 68063), (28, 68042), (29, 68036), (38, 67946), (41, 67910), (42, 67904), (44, 67883),

Gene: Ashwin_117 Start: 67056, Stop: 66757, Start Num: 14

Candidate Starts for Ashwin_117:

(Start: 14 @67056 has 28 MA's), (17, 67008), (18, 67005), (19, 67002), (21, 66993), (28, 66954), (29, 66948), (30, 66942), (37, 66855), (38, 66846), (41, 66810), (42, 66804), (44, 66783),

Gene: Bae_64 Start: 57648, Stop: 57262, Start Num: 7

Candidate Starts for Bae_64:

(Start: 7 @57648 has 6 MA's), (11, 57621), (12, 57618), (Start: 14 @57603 has 28 MA's), (22, 57537), (31, 57465), (32, 57462), (43, 57321), (45, 57291), (46, 57279), (47, 57273),

Gene: Blessica_121 Start: 68810, Stop: 68523, Start Num: 14

Candidate Starts for Blessica_121:

(3, 69020), (Start: 14 @68810 has 28 MA's), (17, 68762), (18, 68759), (19, 68756), (21, 68747), (25, 68729), (28, 68708), (29, 68702), (37, 68621), (38, 68612), (41, 68576), (42, 68570), (44, 68549),

Gene: Bora_119 Start: 68828, Stop: 68541, Start Num: 14

Candidate Starts for Bora_119:

(3, 69035), (Start: 14 @68828 has 28 MA's), (17, 68780), (18, 68777), (19, 68774), (21, 68765), (28, 68726), (29, 68720), (38, 68630), (41, 68594), (42, 68588), (44, 68567),

Gene: CRB2_61 Start: 57387, Stop: 56986, Start Num: 5

Candidate Starts for CRB2_61:

(Start: 5 @57387 has 1 MA's), (11, 57309), (20, 57231), (33, 57168), (34, 57126), (39, 57051), (40, 57048),

Gene: Catdawg_123 Start: 69464, Stop: 69177, Start Num: 14

Candidate Starts for Catdawg_123:

(3, 69674), (Start: 14 @69464 has 28 MA's), (17, 69416), (18, 69413), (19, 69410), (21, 69401), (28, 69362), (29, 69356), (38, 69266), (41, 69230), (42, 69224), (44, 69203),

Gene: Corndog_118 Start: 67104, Stop: 66817, Start Num: 14

Candidate Starts for Corndog_118:

(Start: 14 @67104 has 28 MA's), (17, 67056), (18, 67053), (19, 67050), (21, 67041), (28, 67002), (29, 66996), (37, 66915), (38, 66906), (41, 66870), (42, 66864), (44, 66843),

Gene: DigitDog_64 Start: 56730, Stop: 56395, Start Num: 9

Candidate Starts for DigitDog_64:

(9, 56730), (11, 56706), (12, 56703), (13, 56697), (Start: 14 @56688 has 28 MA's), (35, 56544), (43, 56454), (45, 56424), (47, 56406),

Gene: Donny_65 Start: 56722, Stop: 56381, Start Num: 7

Candidate Starts for Donny_65:

(Start: 7 @56722 has 6 MA's), (11, 56695), (Start: 14 @56677 has 28 MA's), (22, 56611), (27, 56578), (35, 56530), (43, 56440), (45, 56410), (47, 56392),

Gene: Dylan_116 Start: 67157, Stop: 66858, Start Num: 14

Candidate Starts for Dylan_116:

(Start: 14 @67157 has 28 MA's), (17, 67109), (18, 67106), (19, 67103), (21, 67094), (28, 67055), (29, 67049), (30, 67043), (38, 66947), (41, 66911), (42, 66905), (44, 66884),

Gene: EastView9101_63 Start: 56420, Stop: 56079, Start Num: 7

Candidate Starts for EastView9101_63:

(Start: 7 @56420 has 6 MA's), (11, 56393), (Start: 14 @56375 has 28 MA's), (22, 56309), (27, 56276), (35, 56228), (43, 56138), (45, 56108), (47, 56090),

Gene: Familton_124 Start: 69183, Stop: 68896, Start Num: 14

Candidate Starts for Familton_124:

(3, 69390), (Start: 14 @69183 has 28 MA's), (17, 69135), (18, 69132), (19, 69129), (21, 69120), (28, 69081), (29, 69075), (38, 68985), (41, 68949), (42, 68943), (44, 68922),

Gene: Firecracker_122 Start: 68696, Stop: 68397, Start Num: 14

Candidate Starts for Firecracker_122:

(Start: 14 @68696 has 28 MA's), (17, 68648), (18, 68645), (19, 68642), (21, 68633), (28, 68594), (29, 68588), (30, 68582), (37, 68495), (38, 68486), (41, 68450), (42, 68444), (44, 68423),

Gene: FoulBall_121 Start: 68427, Stop: 68140, Start Num: 14

Candidate Starts for FoulBall_121:

(3, 68637), (Start: 14 @68427 has 28 MA's), (17, 68379), (18, 68376), (19, 68373), (21, 68364), (25, 68346), (28, 68325), (29, 68319), (38, 68229), (41, 68193), (42, 68187), (44, 68166),

Gene: Funsized_64 Start: 58606, Stop: 58226, Start Num: 6

Candidate Starts for Funsized_64:

(1, 58819), (2, 58771), (4, 58690), (Start: 6 @58606 has 1 MA's), (10, 58558), (15, 58513), (23, 58456), (24, 58444), (27, 58423), (36, 58354), (39, 58306), (43, 58276), (44, 58273),

Gene: Idergollasper_126 Start: 69870, Stop: 69583, Start Num: 14

Candidate Starts for Idergollasper_126:

(3, 70080), (Start: 14 @69870 has 28 MA's), (17, 69822), (18, 69819), (19, 69816), (21, 69807), (28, 69768), (29, 69762), (38, 69672), (41, 69636), (42, 69630), (44, 69609),

Gene: JangDynasty_120 Start: 68232, Stop: 67945, Start Num: 14

Candidate Starts for JangDynasty_120:

(3, 68439), (Start: 14 @68232 has 28 MA's), (17, 68184), (18, 68181), (19, 68178), (21, 68169), (28, 68130), (29, 68124), (38, 68034), (41, 67998), (42, 67992), (44, 67971),

Gene: KarasumaRum_63 Start: 56576, Stop: 56241, Start Num: 9

Candidate Starts for KarasumaRum_63:

(9, 56576), (11, 56552), (12, 56549), (13, 56543), (Start: 14 @56534 has 28 MA's), (35, 56390), (43, 56300), (45, 56270), (47, 56252),

Gene: Krili_124 Start: 69021, Stop: 68734, Start Num: 14

Candidate Starts for Krili_124:

(3, 69231), (Start: 14 @69021 has 28 MA's), (17, 68973), (18, 68970), (19, 68967), (21, 68958), (25, 68940), (29, 68913), (37, 68832), (38, 68823), (41, 68787), (42, 68781), (44, 68760),

Gene: MadKillah_125 Start: 68497, Stop: 68210, Start Num: 14

Candidate Starts for MadKillah_125:

(3, 68707), (Start: 14 @68497 has 28 MA's), (17, 68449), (18, 68446), (19, 68443), (21, 68434), (25, 68416), (28, 68395), (29, 68389), (37, 68308), (38, 68299), (41, 68263), (42, 68257), (44, 68236),

Gene: Mori_122 Start: 69047, Stop: 68760, Start Num: 14

Candidate Starts for Mori_122:

(3, 69257), (Start: 14 @69047 has 28 MA's), (17, 68999), (18, 68996), (19, 68993), (21, 68984), (29, 68939), (38, 68849), (41, 68813), (42, 68807), (44, 68786),

Gene: Murai_122 Start: 68865, Stop: 68578, Start Num: 14

Candidate Starts for Murai_122:

(3, 69075), (Start: 14 @68865 has 28 MA's), (17, 68817), (18, 68814), (19, 68811), (21, 68802), (28, 68763), (29, 68757), (38, 68667), (41, 68631), (42, 68625), (44, 68604),

Gene: Mysterious_63 Start: 56569, Stop: 56225, Start Num: 8

Candidate Starts for Mysterious_63:

(Start: 8 @56569 has 3 MA's), (11, 56542), (16, 56500), (27, 56422), (35, 56374), (43, 56284), (47, 56236),

Gene: Nangang_63 Start: 56756, Stop: 56421, Start Num: 9

Candidate Starts for Nangang_63:

(9, 56756), (11, 56732), (12, 56729), (13, 56723), (Start: 14 @56714 has 28 MA's), (35, 56570), (43, 56480), (45, 56450), (47, 56432),

Gene: Nehemiah_62 Start: 56572, Stop: 56228, Start Num: 8

Candidate Starts for Nehemiah_62:

(Start: 8 @56572 has 3 MA's), (11, 56545), (16, 56503), (27, 56425), (35, 56377), (43, 56287), (47, 56239),

Gene: NiebruSaylor_122 Start: 68161, Stop: 67874, Start Num: 14

Candidate Starts for NiebruSaylor_122:

(3, 68371), (Start: 14 @68161 has 28 MA's), (17, 68113), (18, 68110), (19, 68107), (21, 68098), (29, 68053), (38, 67963), (41, 67927), (42, 67921), (44, 67900),

Gene: Phelemich_61 Start: 56567, Stop: 56223, Start Num: 8

Candidate Starts for Phelemich_61:

(Start: 8 @56567 has 3 MA's), (11, 56540), (15, 56510), (16, 56498), (26, 56423), (27, 56420), (35, 56372), (43, 56282), (47, 56234),

Gene: Reprobate_62 Start: 56572, Stop: 56228, Start Num: 8

Candidate Starts for Reprobate_62:

(Start: 8 @56572 has 3 MA's), (11, 56545), (15, 56515), (16, 56503), (26, 56428), (27, 56425), (35, 56377), (43, 56287), (47, 56239),

Gene: Rich_62 Start: 57709, Stop: 57323, Start Num: 7

Candidate Starts for Rich_62:

(Start: 7 @57709 has 6 MA's), (11, 57682), (12, 57679), (Start: 14 @57664 has 28 MA's), (22, 57598), (31, 57526), (32, 57523), (35, 57472), (43, 57382), (45, 57352), (46, 57340), (47, 57334),

Gene: Rita130_63 Start: 56618, Stop: 56277, Start Num: 7

Candidate Starts for Rita130_63:

(Start: 7 @56618 has 6 MA's), (11, 56591), (Start: 14 @56573 has 28 MA's), (22, 56507), (27, 56474), (35, 56426), (43, 56336), (45, 56306), (47, 56288),

Gene: Ryadel_127 Start: 70013, Stop: 69726, Start Num: 14

Candidate Starts for Ryadel_127:

(3, 70223), (Start: 14 @70013 has 28 MA's), (17, 69965), (18, 69962), (19, 69959), (21, 69950), (25, 69932), (28, 69911), (29, 69905), (37, 69824), (38, 69815), (41, 69779), (42, 69773), (44, 69752),

Gene: SchoolBus_123 Start: 69047, Stop: 68760, Start Num: 14

Candidate Starts for SchoolBus_123:

(3, 69254), (Start: 14 @69047 has 28 MA's), (17, 68999), (18, 68996), (19, 68993), (21, 68984), (28, 68945), (29, 68939), (38, 68849), (41, 68813), (42, 68807), (44, 68786),

Gene: Schuy_122 Start: 68206, Stop: 67919, Start Num: 14

Candidate Starts for Schuy_122:

(3, 68416), (Start: 14 @68206 has 28 MA's), (17, 68158), (18, 68155), (19, 68152), (21, 68143), (25, 68125), (28, 68104), (29, 68098), (38, 68008), (41, 67972), (42, 67966), (44, 67945),

Gene: Serendipitous_62 Start: 56107, Stop: 55766, Start Num: 8

Candidate Starts for Serendipitous_62:

(Start: 8 @56107 has 3 MA's), (11, 56080), (12, 56077), (35, 55915), (43, 55825), (45, 55795), (46, 55783),

Gene: Shenyu_63 Start: 56833, Stop: 56498, Start Num: 9

Candidate Starts for Shenyu_63:

(9, 56833), (11, 56809), (12, 56806), (13, 56800), (Start: 14 @56791 has 28 MA's), (35, 56647), (43, 56557), (45, 56527), (47, 56509),

Gene: Shida_121 Start: 68708, Stop: 68421, Start Num: 14

Candidate Starts for Shida_121:

(3, 68918), (Start: 14 @68708 has 28 MA's), (17, 68660), (18, 68657), (19, 68654), (21, 68645), (29, 68600), (41, 68474), (42, 68468), (44, 68447),

Gene: SirJeffery_63 Start: 56753, Stop: 56412, Start Num: 7

Candidate Starts for SirJeffery_63:

(Start: 7 @56753 has 6 MA's), (11, 56726), (Start: 14 @56708 has 28 MA's), (22, 56642), (27, 56609), (35, 56561), (43, 56471), (45, 56441), (47, 56423),

Gene: Smooch_120 Start: 68750, Stop: 68481, Start Num: 14

Candidate Starts for Smooch_120:

(Start: 14 @68750 has 28 MA's), (17, 68702), (18, 68699), (19, 68696), (21, 68687), (28, 68648), (29, 68642), (37, 68561), (38, 68552), (41, 68516), (42, 68510), (44, 68489),

Gene: StinkyVeggy_63 Start: 56576, Stop: 56241, Start Num: 9

Candidate Starts for StinkyVeggy_63:

(9, 56576), (11, 56552), (12, 56549), (13, 56543), (Start: 14 @56534 has 28 MA's), (35, 56390), (43, 56300), (45, 56270), (47, 56252),

Gene: Suigeneris_65 Start: 56871, Stop: 56530, Start Num: 7

Candidate Starts for Suigeneris_65:

(Start: 7 @56871 has 6 MA's), (11, 56844), (Start: 14 @56826 has 28 MA's), (22, 56760), (27, 56727), (35, 56679), (43, 56589), (45, 56559), (47, 56541),

Gene: TelAviv_118 Start: 68792, Stop: 68505, Start Num: 14

Candidate Starts for TelAviv_118:

(3, 68999), (Start: 14 @68792 has 28 MA's), (17, 68744), (18, 68741), (19, 68738), (21, 68729), (28, 68690), (29, 68684), (38, 68594), (41, 68558), (42, 68552), (44, 68531),

Gene: Vagabond_121 Start: 68207, Stop: 67920, Start Num: 14

Candidate Starts for Vagabond_121:

(3, 68417), (Start: 14 @68207 has 28 MA's), (17, 68159), (18, 68156), (19, 68153), (21, 68144), (28, 68105), (29, 68099), (38, 68009), (41, 67973), (42, 67967), (44, 67946),

Gene: Vorrrps_122 Start: 69046, Stop: 68759, Start Num: 14

Candidate Starts for Vorrrps_122:

(3, 69256), (Start: 14 @69046 has 28 MA's), (17, 68998), (18, 68995), (19, 68992), (21, 68983), (29, 68938), (38, 68848), (41, 68812), (42, 68806), (44, 68785),

Gene: Wildflower_117 Start: 66697, Stop: 66398, Start Num: 14

Candidate Starts for Wildflower_117:

(Start: 14 @66697 has 28 MA's), (17, 66649), (18, 66646), (19, 66643), (21, 66634), (28, 66595), (29, 66589), (30, 66583), (37, 66496), (38, 66487), (41, 66451), (42, 66445), (44, 66424),

Gene: Winget_122 Start: 68897, Stop: 68610, Start Num: 14

Candidate Starts for Winget_122:

(3, 69107), (Start: 14 @68897 has 28 MA's), (17, 68849), (18, 68846), (19, 68843), (21, 68834), (25, 68816), (28, 68795), (29, 68789), (38, 68699), (41, 68663), (42, 68657), (44, 68636),

Gene: YungJamal_118 Start: 67548, Stop: 67261, Start Num: 14

Candidate Starts for YungJamal_118:

(Start: 14 @67548 has 28 MA's), (17, 67500), (18, 67497), (19, 67494), (21, 67485), (28, 67446), (29, 67440), (37, 67359), (38, 67350), (41, 67314), (42, 67308), (44, 67287),

Gene: Zakhe101_117 Start: 66996, Stop: 66697, Start Num: 14

Candidate Starts for Zakhe101_117:

(Start: 14 @66996 has 28 MA's), (17, 66948), (18, 66945), (19, 66942), (21, 66933), (28, 66894), (29, 66888), (30, 66882), (38, 66786), (41, 66750), (42, 66744), (44, 66723),

Gene: Zebo_119 Start: 68552, Stop: 68265, Start Num: 14

Candidate Starts for Zebo_119:

(3, 68759), (Start: 14 @68552 has 28 MA's), (17, 68504), (18, 68501), (19, 68498), (21, 68489), (28, 68450), (29, 68444), (38, 68354), (41, 68318), (42, 68312), (44, 68291),