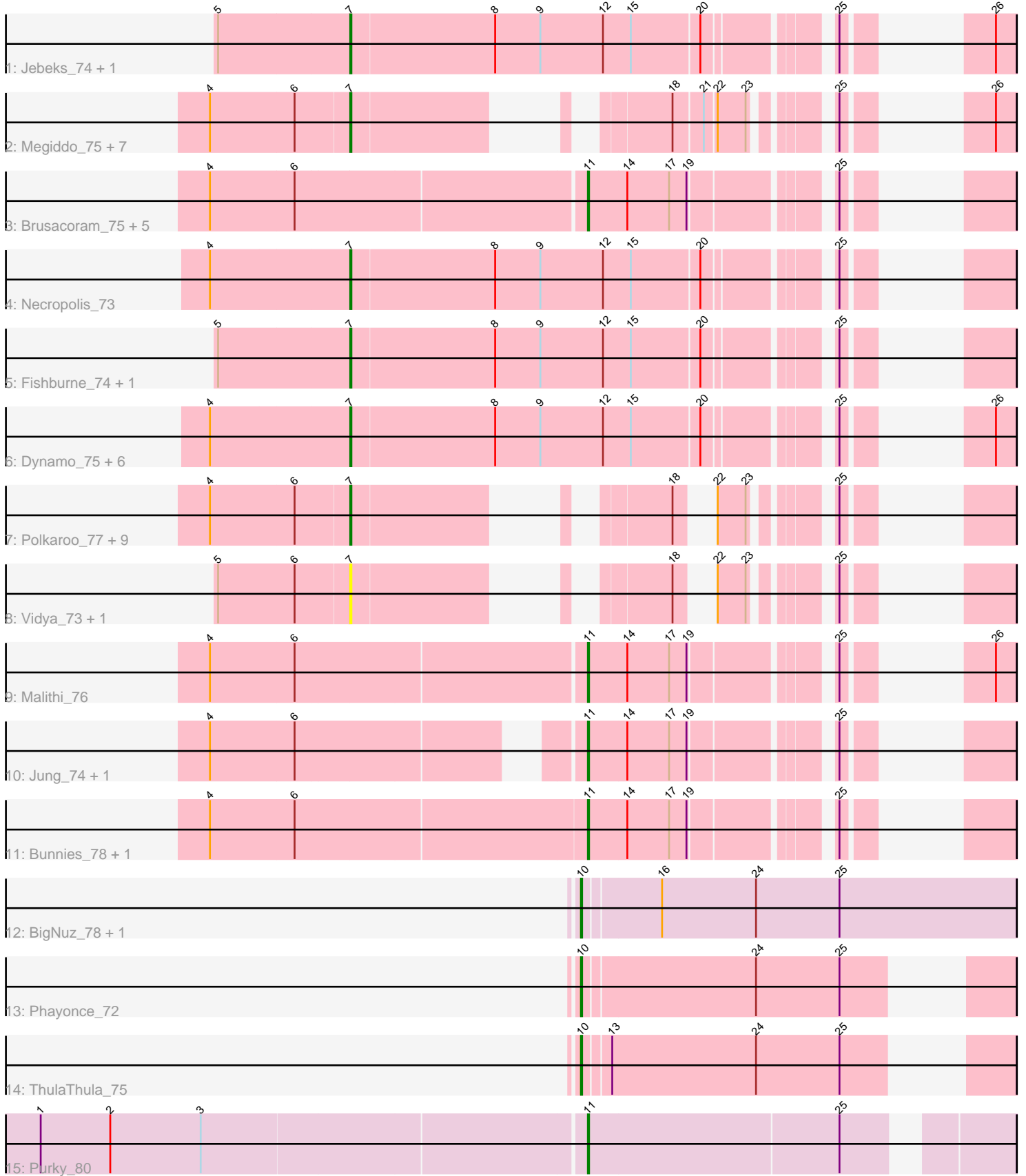


Pham 203035



Note: Tracks are now grouped by subcluster and scaled. Switching in subcluster is indicated by changes in track color. Track scale is now set by default to display the region 30 bp upstream of start 1 to 30 bp downstream of the last possible start. If this default region is judged to be packed too tightly with annotated starts, the track will be further scaled to only show that region of the ORF with annotated starts. This action will be indicated by adding "Zoomed" to the title. For starts, yellow indicates the location of called starts comprised solely of Glimmer/GeneMark auto-annotations, green indicates the location of called starts with at least 1 manual gene annotation.

Pham 203035 Report

This analysis was run 01/18/25 on database version 583.

Pham number 203035 has 48 members, 4 are drafts.

Phages represented in each track:

- Track 1 : Jebeks_74, Langerak_74
- Track 2 : Megiddo_75, KilKor_76, Phalm_76, Gavriela_74, StressBall_75, CactusJack_76, Glaske_75, Willsammy_77
- Track 3 : Brusacoram_75, Camster_77, Sonah_78, Thespis_75, Atcoo_75, FirstPlacePfu_79
- Track 4 : Necropolis_73
- Track 5 : Fishburne_74, Zilizebeth_80
- Track 6 : Dynamo_75, Bogie_78, HUHilltop_78, Phineas_75, Pygmy_79, GreaseLightnin_77, Shipwreck_78
- Track 7 : Polkaroo_77, Donovan_75, Mangethe_78, Venti_76, Juniormint_71, Phegasus_78, Techage_76, Majeke_78, Arib1_75, Bartholomew_74
- Track 8 : Vidya_73, Kari_74
- Track 9 : Malithi_76
- Track 10 : Jung_74, StevieRay_78
- Track 11 : Bunnies_78, Ksquared_77
- Track 12 : BigNuz_78, Nazo_79
- Track 13 : Phayonce_72
- Track 14 : ThulaThula_75
- Track 15 : Purky_80

Summary of Final Annotations (See graph section above for start numbers):

The start number called the most often in the published annotations is 7, it was called in 28 of the 44 non-draft genes in the pham.

Genes that call this "Most Annotated" start:

- Arib1_75, Bartholomew_74, Bogie_78, CactusJack_76, Donovan_75, Dynamo_75, Fishburne_74, Gavriela_74, Glaske_75, GreaseLightnin_77, HUHilltop_78, Jebeks_74, Juniormint_71, Kari_74, KilKor_76, Langerak_74, Majeke_78, Mangethe_78, Megiddo_75, Necropolis_73, Phalm_76, Phegasus_78, Phineas_75, Polkaroo_77, Pygmy_79, Shipwreck_78, StressBall_75, Techage_76, Venti_76, Vidya_73, Willsammy_77, Zilizebeth_80,

Genes that have the "Most Annotated" start but do not call it:

-

Genes that do not have the "Most Annotated" start:

- Atcoo_75, BigNuz_78, Brusacoram_75, Bunnies_78, Camster_77, FirstPlacePfu_79, Jung_74, Ksquared_77, Malithi_76, Nazo_79, Phayonce_72, Purky_80, Sonah_78, StevieRay_78, Thespis_75, ThulaThula_75,

Summary by start number:

Start 7:

- Found in 32 of 48 (66.7%) of genes in pham
- Manual Annotations of this start: 28 of 44
- Called 100.0% of time when present
- Phage (with cluster) where this start called: Arib1_75 (P1), Bartholomew_74 (P1), Bogie_78 (P1), CactusJack_76 (P1), Donovan_75 (P1), Dynamo_75 (P1), Fishburne_74 (P1), Gavriela_74 (P1), Glaske_75 (P1), GreaseLightnin_77 (P1), HUHilltop_78 (P1), Jebeks_74 (P1), Juniormint_71 (P1), Kari_74 (P1), KilKor_76 (P1), Langerak_74 (P1), Majeke_78 (P1), Mangethe_78 (P1), Megiddo_75 (P1), Necropolis_73 (P1), Phalm_76 (P1), Phegasus_78 (P1), Phineas_75 (P1), Polkaroo_77 (P1), Pygmy_79 (P1), Shipwreck_78 (P1), StressBall_75 (P1), Techage_76 (P1), Venti_76 (P1), Vidya_73 (P1), Willsammy_77 (P1), Zilizebeth_80 (P1),

Start 10:

- Found in 4 of 48 (8.3%) of genes in pham
- Manual Annotations of this start: 4 of 44
- Called 100.0% of time when present
- Phage (with cluster) where this start called: BigNuz_78 (P4), Nazo_79 (P4), Phayonce_72 (P5), ThulaThula_75 (P5),

Start 11:

- Found in 12 of 48 (25.0%) of genes in pham
- Manual Annotations of this start: 12 of 44
- Called 100.0% of time when present
- Phage (with cluster) where this start called: Atcoo_75 (P1), Brusacoram_75 (P1), Bunnies_78 (P1), Camster_77 (P1), FirstPlacePfu_79 (P1), Jung_74 (P1), Ksquared_77 (P1), Malithi_76 (P1), Purky_80 (P6), Sonah_78 (P1), StevieRay_78 (P1), Thespis_75 (P1),

Summary by clusters:

There are 4 clusters represented in this pham: P1, P6, P4, P5,

Info for manual annotations of cluster P1:

- Start number 7 was manually annotated 28 times for cluster P1.
- Start number 11 was manually annotated 11 times for cluster P1.

Info for manual annotations of cluster P4:

- Start number 10 was manually annotated 2 times for cluster P4.

Info for manual annotations of cluster P5:

- Start number 10 was manually annotated 2 times for cluster P5.

Info for manual annotations of cluster P6:

•Start number 11 was manually annotated 1 time for cluster P6.

Gene Information:

Gene: Arib1_75 Start: 45198, Stop: 45536, Start Num: 7

Candidate Starts for Arib1_75:

(4, 45081), (6, 45153), (Start: 7 @45198 has 28 MA's), (18, 45381), (22, 45393), (23, 45417), (25, 45465),

Gene: Atcoo_75 Start: 47621, Stop: 47878, Start Num: 11

Candidate Starts for Atcoo_75:

(4, 47309), (6, 47381), (Start: 11 @47621 has 12 MA's), (14, 47654), (17, 47690), (19, 47705), (25, 47807),

Gene: Bartholomew_74 Start: 44950, Stop: 45288, Start Num: 7

Candidate Starts for Bartholomew_74:

(4, 44833), (6, 44905), (Start: 7 @44950 has 28 MA's), (18, 45133), (22, 45145), (23, 45169), (25, 45217),

Gene: BigNuz_78 Start: 47050, Stop: 47418, Start Num: 10

Candidate Starts for BigNuz_78:

(Start: 10 @47050 has 4 MA's), (16, 47113), (24, 47194), (25, 47266),

Gene: Bogie_78 Start: 46985, Stop: 47443, Start Num: 7

Candidate Starts for Bogie_78:

(4, 46868), (Start: 7 @46985 has 28 MA's), (8, 47108), (9, 47147), (12, 47201), (15, 47225), (20, 47282), (25, 47372), (26, 47426),

Gene: Brusacoram_75 Start: 46164, Stop: 46421, Start Num: 11

Candidate Starts for Brusacoram_75:

(4, 45852), (6, 45924), (Start: 11 @46164 has 12 MA's), (14, 46197), (17, 46233), (19, 46248), (25, 46350),

Gene: Bunnies_78 Start: 47369, Stop: 47626, Start Num: 11

Candidate Starts for Bunnies_78:

(4, 47054), (6, 47126), (Start: 11 @47369 has 12 MA's), (14, 47402), (17, 47438), (19, 47453), (25, 47555),

Gene: CactusJack_76 Start: 46666, Stop: 47025, Start Num: 7

Candidate Starts for CactusJack_76:

(4, 46549), (6, 46621), (Start: 7 @46666 has 28 MA's), (18, 46849), (21, 46873), (22, 46882), (23, 46906), (25, 46954), (26, 47008),

Gene: Camster_77 Start: 45696, Stop: 45953, Start Num: 11

Candidate Starts for Camster_77:

(4, 45384), (6, 45456), (Start: 11 @45696 has 12 MA's), (14, 45729), (17, 45765), (19, 45780), (25, 45882),

Gene: Donovan_75 Start: 45628, Stop: 45966, Start Num: 7

Candidate Starts for Donovan_75:

(4, 45511), (6, 45583), (Start: 7 @45628 has 28 MA's), (18, 45811), (22, 45823), (23, 45847), (25, 45895),

Gene: Dynamo_75 Start: 45019, Stop: 45477, Start Num: 7

Candidate Starts for Dynamo_75:

(4, 44902), (Start: 7 @45019 has 28 MA's), (8, 45142), (9, 45181), (12, 45235), (15, 45259), (20, 45316), (25, 45406), (26, 45460),

Gene: FirstPlacePfu_79 Start: 44227, Stop: 44484, Start Num: 11

Candidate Starts for FirstPlacePfu_79:

(4, 43915), (6, 43987), (Start: 11 @44227 has 12 MA's), (14, 44260), (17, 44296), (19, 44311), (25, 44413),

Gene: Fishburne_74 Start: 45455, Stop: 45913, Start Num: 7

Candidate Starts for Fishburne_74:

(5, 45344), (Start: 7 @45455 has 28 MA's), (8, 45578), (9, 45617), (12, 45671), (15, 45695), (20, 45752), (25, 45842),

Gene: Gavriela_74 Start: 46360, Stop: 46719, Start Num: 7

Candidate Starts for Gavriela_74:

(4, 46243), (6, 46315), (Start: 7 @46360 has 28 MA's), (18, 46543), (21, 46567), (22, 46576), (23, 46600), (25, 46648), (26, 46702),

Gene: Glaske_75 Start: 46666, Stop: 47025, Start Num: 7

Candidate Starts for Glaske_75:

(4, 46549), (6, 46621), (Start: 7 @46666 has 28 MA's), (18, 46849), (21, 46873), (22, 46882), (23, 46906), (25, 46954), (26, 47008),

Gene: GreaseLightnin_77 Start: 46770, Stop: 47228, Start Num: 7

Candidate Starts for GreaseLightnin_77:

(4, 46653), (Start: 7 @46770 has 28 MA's), (8, 46893), (9, 46932), (12, 46986), (15, 47010), (20, 47067), (25, 47157), (26, 47211),

Gene: HUHilltop_78 Start: 45242, Stop: 45700, Start Num: 7

Candidate Starts for HUHilltop_78:

(4, 45125), (Start: 7 @45242 has 28 MA's), (8, 45365), (9, 45404), (12, 45458), (15, 45482), (20, 45539), (25, 45629), (26, 45683),

Gene: Jebeks_74 Start: 43926, Stop: 44384, Start Num: 7

Candidate Starts for Jebeks_74:

(5, 43815), (Start: 7 @43926 has 28 MA's), (8, 44049), (9, 44088), (12, 44142), (15, 44166), (20, 44223), (25, 44313), (26, 44367),

Gene: Jung_74 Start: 45106, Stop: 45363, Start Num: 11

Candidate Starts for Jung_74:

(4, 44830), (6, 44902), (Start: 11 @45106 has 12 MA's), (14, 45139), (17, 45175), (19, 45190), (25, 45292),

Gene: Juniormint_71 Start: 44041, Stop: 44379, Start Num: 7

Candidate Starts for Juniormint_71:

(4, 43924), (6, 43996), (Start: 7 @44041 has 28 MA's), (18, 44224), (22, 44236), (23, 44260), (25, 44308),

Gene: Kari_74 Start: 45989, Stop: 46327, Start Num: 7

Candidate Starts for Kari_74:

(5, 45878), (6, 45944), (Start: 7 @45989 has 28 MA's), (18, 46172), (22, 46184), (23, 46208), (25, 46256),

Gene: KilKor_76 Start: 47359, Stop: 47718, Start Num: 7

Candidate Starts for KilKor_76:

(4, 47242), (6, 47314), (Start: 7 @47359 has 28 MA's), (18, 47542), (21, 47566), (22, 47575), (23, 47599), (25, 47647), (26, 47701),

Gene: Ksquared_77 Start: 47246, Stop: 47503, Start Num: 11

Candidate Starts for Ksquared_77:

(4, 46931), (6, 47003), (Start: 11 @47246 has 12 MA's), (14, 47279), (17, 47315), (19, 47330), (25, 47432),

Gene: Langerak_74 Start: 45433, Stop: 45891, Start Num: 7

Candidate Starts for Langerak_74:

(5, 45322), (Start: 7 @45433 has 28 MA's), (8, 45556), (9, 45595), (12, 45649), (15, 45673), (20, 45730), (25, 45820), (26, 45874),

Gene: Majeke_78 Start: 46077, Stop: 46415, Start Num: 7

Candidate Starts for Majeke_78:

(4, 45960), (6, 46032), (Start: 7 @46077 has 28 MA's), (18, 46260), (22, 46272), (23, 46296), (25, 46344),

Gene: Malithi_76 Start: 45416, Stop: 45673, Start Num: 11

Candidate Starts for Malithi_76:

(4, 45104), (6, 45176), (Start: 11 @45416 has 12 MA's), (14, 45449), (17, 45485), (19, 45500), (25, 45602), (26, 45656),

Gene: Mangethe_78 Start: 46077, Stop: 46415, Start Num: 7

Candidate Starts for Mangethe_78:

(4, 45960), (6, 46032), (Start: 7 @46077 has 28 MA's), (18, 46260), (22, 46272), (23, 46296), (25, 46344),

Gene: Megiddo_75 Start: 47227, Stop: 47586, Start Num: 7

Candidate Starts for Megiddo_75:

(4, 47110), (6, 47182), (Start: 7 @47227 has 28 MA's), (18, 47410), (21, 47434), (22, 47443), (23, 47467), (25, 47515), (26, 47569),

Gene: Nazo_79 Start: 46936, Stop: 47304, Start Num: 10

Candidate Starts for Nazo_79:

(Start: 10 @46936 has 4 MA's), (16, 46999), (24, 47080), (25, 47152),

Gene: Necropolis_73 Start: 44609, Stop: 45067, Start Num: 7

Candidate Starts for Necropolis_73:

(4, 44492), (Start: 7 @44609 has 28 MA's), (8, 44732), (9, 44771), (12, 44825), (15, 44849), (20, 44906), (25, 44996),

Gene: Phalm_76 Start: 46657, Stop: 47016, Start Num: 7

Candidate Starts for Phalm_76:

(4, 46540), (6, 46612), (Start: 7 @46657 has 28 MA's), (18, 46840), (21, 46864), (22, 46873), (23, 46897), (25, 46945), (26, 46999),

Gene: Phayonce_72 Start: 47098, Stop: 47397, Start Num: 10

Candidate Starts for Phayonce_72:

(Start: 10 @47098 has 4 MA's), (24, 47242), (25, 47314),

Gene: Phegasus_78 Start: 46044, Stop: 46382, Start Num: 7

Candidate Starts for Phegasus_78:

(4, 45927), (6, 45999), (Start: 7 @46044 has 28 MA's), (18, 46227), (22, 46239), (23, 46263), (25, 46311),

Gene: Phineas_75 Start: 45576, Stop: 46034, Start Num: 7

Candidate Starts for Phineas_75:

(4, 45459), (Start: 7 @45576 has 28 MA's), (8, 45699), (9, 45738), (12, 45792), (15, 45816), (20, 45873), (25, 45963), (26, 46017),

Gene: Polkaroo_77 Start: 47550, Stop: 47888, Start Num: 7

Candidate Starts for Polkaroo_77:

(4, 47433), (6, 47505), (Start: 7 @47550 has 28 MA's), (18, 47733), (22, 47745), (23, 47769), (25, 47817),

Gene: Purky_80 Start: 48824, Stop: 49156, Start Num: 11

Candidate Starts for Purky_80:

(1, 48365), (2, 48425), (3, 48503), (Start: 11 @48824 has 12 MA's), (25, 49037),

Gene: Pygmy_79 Start: 46958, Stop: 47416, Start Num: 7

Candidate Starts for Pygmy_79:

(4, 46841), (Start: 7 @46958 has 28 MA's), (8, 47081), (9, 47120), (12, 47174), (15, 47198), (20, 47255), (25, 47345), (26, 47399),

Gene: Shipwreck_78 Start: 47016, Stop: 47474, Start Num: 7

Candidate Starts for Shipwreck_78:

(4, 46899), (Start: 7 @47016 has 28 MA's), (8, 47139), (9, 47178), (12, 47232), (15, 47256), (20, 47313), (25, 47403), (26, 47457),

Gene: Sonah_78 Start: 44961, Stop: 45218, Start Num: 11

Candidate Starts for Sonah_78:

(4, 44649), (6, 44721), (Start: 11 @44961 has 12 MA's), (14, 44994), (17, 45030), (19, 45045), (25, 45147),

Gene: StevieRay_78 Start: 47362, Stop: 47619, Start Num: 11

Candidate Starts for StevieRay_78:

(4, 47086), (6, 47158), (Start: 11 @47362 has 12 MA's), (14, 47395), (17, 47431), (19, 47446), (25, 47548),

Gene: StressBall_75 Start: 46359, Stop: 46718, Start Num: 7

Candidate Starts for StressBall_75:

(4, 46242), (6, 46314), (Start: 7 @46359 has 28 MA's), (18, 46542), (21, 46566), (22, 46575), (23, 46599), (25, 46647), (26, 46701),

Gene: Techage_76 Start: 45560, Stop: 45898, Start Num: 7

Candidate Starts for Techage_76:

(4, 45443), (6, 45515), (Start: 7 @45560 has 28 MA's), (18, 45743), (22, 45755), (23, 45779), (25, 45827),

Gene: Thespis_75 Start: 46164, Stop: 46421, Start Num: 11

Candidate Starts for Thespis_75:

(4, 45852), (6, 45924), (Start: 11 @46164 has 12 MA's), (14, 46197), (17, 46233), (19, 46248), (25, 46350),

Gene: ThulaThula_75 Start: 48307, Stop: 48606, Start Num: 10

Candidate Starts for ThulaThula_75:

(Start: 10 @48307 has 4 MA's), (13, 48328), (24, 48451), (25, 48523),

Gene: Venti_76 Start: 44950, Stop: 45288, Start Num: 7

Candidate Starts for Venti_76:

(4, 44833), (6, 44905), (Start: 7 @44950 has 28 MA's), (18, 45133), (22, 45145), (23, 45169), (25, 45217),

Gene: Vidya_73 Start: 44968, Stop: 45306, Start Num: 7

Candidate Starts for Vidya_73:

(5, 44857), (6, 44923), (Start: 7 @44968 has 28 MA's), (18, 45151), (22, 45163), (23, 45187), (25, 45235),

Gene: Willsammy_77 Start: 46843, Stop: 47202, Start Num: 7

Candidate Starts for Willsammy_77:

(4, 46726), (6, 46798), (Start: 7 @46843 has 28 MA's), (18, 47026), (21, 47050), (22, 47059), (23, 47083), (25, 47131), (26, 47185),

Gene: Zilizebeth_80 Start: 46402, Stop: 46860, Start Num: 7

Candidate Starts for Zilizebeth_80:

(5, 46291), (Start: 7 @46402 has 28 MA's), (8, 46525), (9, 46564), (12, 46618), (15, 46642), (20, 46699), (25, 46789),