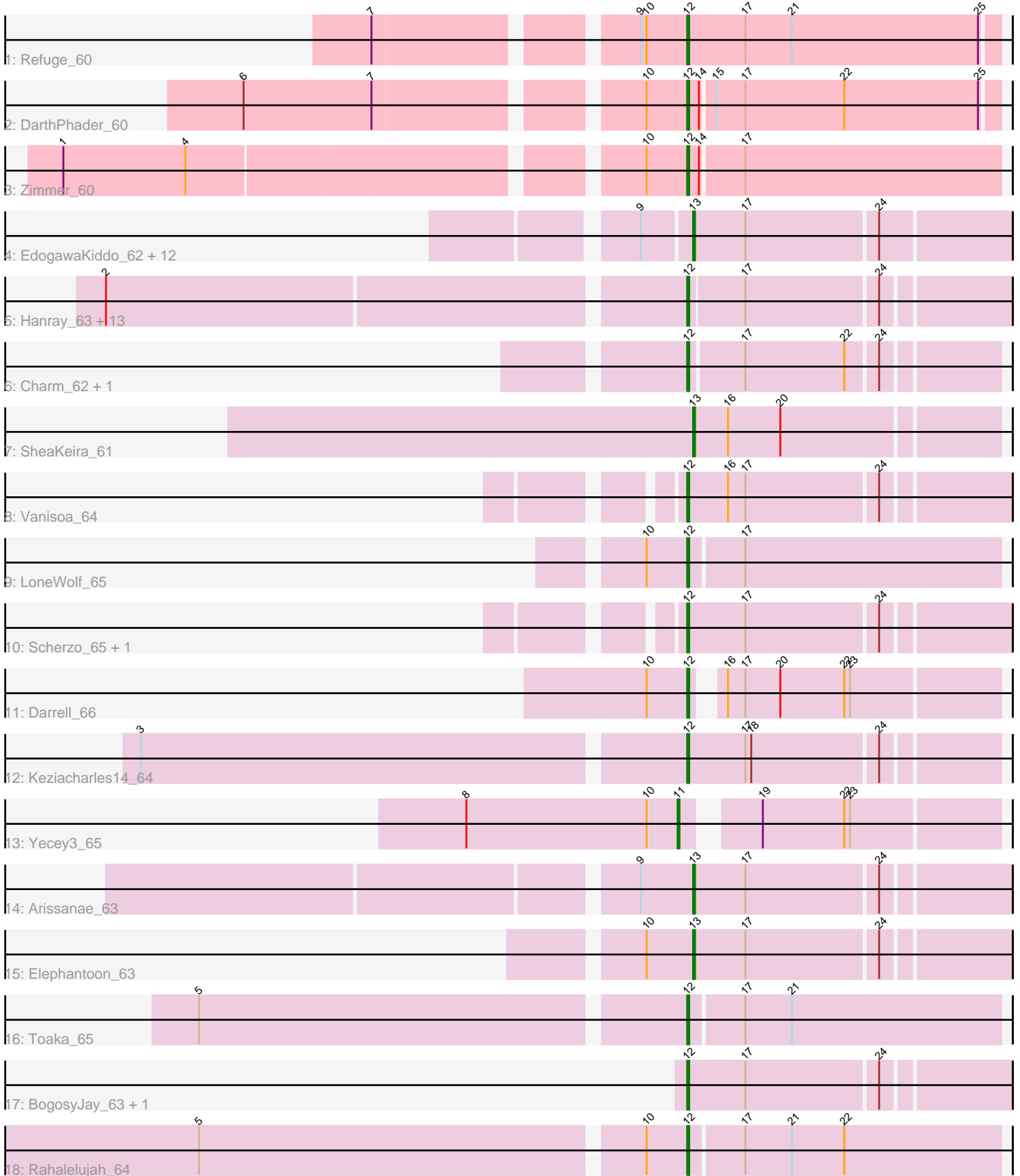


Pham 203051



Note: Tracks are now grouped by subcluster and scaled. Switching in subcluster is indicated by changes in track color. Track scale is now set by default to display the region 30 bp upstream of start 1 to 30 bp downstream of the last possible start. If this default region is judged to be packed too tightly with annotated starts, the track will be further scaled to only show that region of the ORF with annotated starts. This action will be indicated by adding "Zoomed" to the title. For starts, yellow indicates the location of called starts comprised solely of Glimmer/GeneMark auto-annotations, green indicates the location of called starts with at least 1 manual gene annotation.

Pham 203051 Report

This analysis was run 01/18/25 on database version 583.

Pham number 203051 has 46 members, 8 are drafts.

Phages represented in each track:

- Track 1 : Refuge_60
- Track 2 : DarthPhader_60
- Track 3 : Zimmer_60
- Track 4 : EdogawaKiddo_62, RyeScarlet_66, HortumSL17_65, Tubs_64, PackMan_63, Aliter_65, Phonnegut_65, Phaeder_64, Sachima_60, Pioneer_65, Myxus_64, Catalina_66, Beemo_65
- Track 5 : Hanray_63, Jiawan_62, Onglai_63, Holec_63, Qobbit_63, ExplosioNervosa_63, EmyBug_62, Eidsmoe_63, Conquerage_63, Alma_63, Lilleskat_61, Spouty_63, Priya_63, Fayely_63
- Track 6 : Charm_62, DreamTeam1_62
- Track 7 : SheaKeira_61
- Track 8 : Vanisoa_64
- Track 9 : LoneWolf_65
- Track 10 : Scherzo_65, Ugenie5_61
- Track 11 : Darrell_66
- Track 12 : Keziacharles14_64
- Track 13 : Yecey3_65
- Track 14 : Arissanae_63
- Track 15 : Elephantoon_63
- Track 16 : Toaka_65
- Track 17 : BogosyJay_63, Maminiaina_63
- Track 18 : Rahalelujah_64

Summary of Final Annotations (See graph section above for start numbers):

The start number called the most often in the published annotations is 12, it was called in 24 of the 38 non-draft genes in the pham.

Genes that call this "Most Annotated" start:

- Alma_63, BogosyJay_63, Charm_62, Conquerage_63, Darrell_66, DarthPhader_60, DreamTeam1_62, Eidsmoe_63, EmyBug_62, ExplosioNervosa_63, Fayely_63, Hanray_63, Holec_63, Jiawan_62, Keziacharles14_64, Lilleskat_61, LoneWolf_65, Maminiaina_63, Onglai_63, Priya_63, Qobbit_63, Rahalelujah_64, Refuge_60, Scherzo_65, Spouty_63, Toaka_65, Ugenie5_61, Vanisoa_64, Zimmer_60,

Genes that have the "Most Annotated" start but do not call it:

-

Genes that do not have the "Most Annotated" start:

- Aliter_65, Arissanae_63, Beemo_65, Catalina_66, EdogawaKiddo_62, Elephantoon_63, HortumSL17_65, Myxus_64, PackMan_63, Phaeder_64, Phonnegut_65, Pioneer_65, RyeScarlet_66, Sachima_60, SheaKeira_61, Tubs_64, Yecey3_65,

Summary by start number:

Start 11:

- Found in 1 of 46 (2.2%) of genes in pham
- Manual Annotations of this start: 1 of 38
- Called 100.0% of time when present
- Phage (with cluster) where this start called: Yecey3_65 (A9),

Start 12:

- Found in 29 of 46 (63.0%) of genes in pham
- Manual Annotations of this start: 24 of 38
- Called 100.0% of time when present
- Phage (with cluster) where this start called: Alma_63 (A9), BogosyJay_63 (A9), Charm_62 (A9), Conquerage_63 (A9), Darrell_66 (A9), DARTHPhader_60 (A12), DreamTeam1_62 (A9), Eidsmoe_63 (A9), EmyBug_62 (A9), ExplosioNervosa_63 (A9), Fayely_63 (A9), Hanray_63 (A9), Halex_63 (A9), Jiawan_62 (A9), Keziacharles14_64 (A9), Lilleskat_61 (A9), LoneWolf_65 (A9), Maminina_63 (A9), Onglai_63 (A9), Priya_63 (A9), Qobbit_63 (A9), Rahalelujah_64 (A9), Refuge_60 (A12), Scherzo_65 (A9), Spouty_63 (A9), Toaka_65 (A9), Ugenie5_61 (A9), Vanisoa_64 (A9), Zimmer_60 (A12),

Start 13:

- Found in 16 of 46 (34.8%) of genes in pham
- Manual Annotations of this start: 13 of 38
- Called 100.0% of time when present
- Phage (with cluster) where this start called: Aliter_65 (A9), Arissanae_63 (A9), Beemo_65 (A9), Catalina_66 (A9), EdogawaKiddo_62 (A9), Elephantoon_63 (A9), HortumSL17_65 (A9), Myxus_64 (A9), PackMan_63 (A9), Phaeder_64 (A9), Phonnegut_65 (A9), Pioneer_65 (A9), RyeScarlet_66 (A9), Sachima_60 (A9), SheaKeira_61 (A9), Tubs_64 (A9),

Summary by clusters:

There are 2 clusters represented in this pham: A9, A12,

Info for manual annotations of cluster A12:

- Start number 12 was manually annotated 3 times for cluster A12.

Info for manual annotations of cluster A9:

- Start number 11 was manually annotated 1 time for cluster A9.
- Start number 12 was manually annotated 21 times for cluster A9.
- Start number 13 was manually annotated 13 times for cluster A9.

Gene Information:

Gene: Aliter_65 Start: 40065, Stop: 39910, Start Num: 13

Candidate Starts for Aliter_65:

(9, 40089), (Start: 13 @40065 has 13 MA's), (17, 40038), (24, 39972),

Gene: Alma_63 Start: 40097, Stop: 39942, Start Num: 12

Candidate Starts for Alma_63:

(2, 40385), (Start: 12 @40097 has 24 MA's), (17, 40070), (24, 40004),

Gene: Arissanae_63 Start: 40631, Stop: 40476, Start Num: 13

Candidate Starts for Arissanae_63:

(9, 40658), (Start: 13 @40631 has 13 MA's), (17, 40604), (24, 40538),

Gene: Beemo_65 Start: 40235, Stop: 40080, Start Num: 13

Candidate Starts for Beemo_65:

(9, 40259), (Start: 13 @40235 has 13 MA's), (17, 40208), (24, 40142),

Gene: BogosyJay_63 Start: 40035, Stop: 39877, Start Num: 12

Candidate Starts for BogosyJay_63:

(Start: 12 @40035 has 24 MA's), (17, 40005), (24, 39939),

Gene: Catalina_66 Start: 40138, Stop: 39983, Start Num: 13

Candidate Starts for Catalina_66:

(9, 40162), (Start: 13 @40138 has 13 MA's), (17, 40111), (24, 40045),

Gene: Charm_62 Start: 39763, Stop: 39614, Start Num: 12

Candidate Starts for Charm_62:

(Start: 12 @39763 has 24 MA's), (17, 39736), (22, 39685), (24, 39670),

Gene: Conquerage_63 Start: 39866, Stop: 39711, Start Num: 12

Candidate Starts for Conquerage_63:

(2, 40154), (Start: 12 @39866 has 24 MA's), (17, 39839), (24, 39773),

Gene: Darrell_66 Start: 40703, Stop: 40557, Start Num: 12

Candidate Starts for Darrell_66:

(10, 40724), (Start: 12 @40703 has 24 MA's), (16, 40694), (17, 40685), (20, 40667), (22, 40634), (23, 40631),

Gene: DarthPhader_60 Start: 40985, Stop: 40830, Start Num: 12

Candidate Starts for DarthPhader_60:

(6, 41195), (7, 41129), (10, 41006), (Start: 12 @40985 has 24 MA's), (14, 40979), (15, 40973), (17, 40958), (22, 40907), (25, 40838),

Gene: DreamTeam1_62 Start: 39595, Stop: 39446, Start Num: 12

Candidate Starts for DreamTeam1_62:

(Start: 12 @39595 has 24 MA's), (17, 39568), (22, 39517), (24, 39502),

Gene: EdogawaKiddo_62 Start: 40105, Stop: 39947, Start Num: 13

Candidate Starts for EdogawaKiddo_62:

(9, 40129), (Start: 13 @40105 has 13 MA's), (17, 40078), (24, 40012),

Gene: Eidsmoe_63 Start: 39858, Stop: 39703, Start Num: 12

Candidate Starts for Eidsmoe_63:

(2, 40146), (Start: 12 @39858 has 24 MA's), (17, 39831), (24, 39765),

Gene: Elephantoon_63 Start: 39445, Stop: 39290, Start Num: 13

Candidate Starts for Elephantoon_63:

(10, 39469), (Start: 13 @39445 has 13 MA's), (17, 39418), (24, 39352),

Gene: EmyBug_62 Start: 39860, Stop: 39705, Start Num: 12

Candidate Starts for EmyBug_62:

(2, 40148), (Start: 12 @39860 has 24 MA's), (17, 39833), (24, 39767),

Gene: ExplosioNervosa_63 Start: 39926, Stop: 39771, Start Num: 12

Candidate Starts for ExplosioNervosa_63:

(2, 40214), (Start: 12 @39926 has 24 MA's), (17, 39899), (24, 39833),

Gene: Fayely_63 Start: 39827, Stop: 39672, Start Num: 12

Candidate Starts for Fayely_63:

(2, 40115), (Start: 12 @39827 has 24 MA's), (17, 39800), (24, 39734),

Gene: Hanray_63 Start: 40190, Stop: 40035, Start Num: 12

Candidate Starts for Hanray_63:

(2, 40478), (Start: 12 @40190 has 24 MA's), (17, 40163), (24, 40097),

Gene: Horex_63 Start: 40206, Stop: 40051, Start Num: 12

Candidate Starts for Horex_63:

(2, 40494), (Start: 12 @40206 has 24 MA's), (17, 40179), (24, 40113),

Gene: HortumSL17_65 Start: 40137, Stop: 39982, Start Num: 13

Candidate Starts for HortumSL17_65:

(9, 40161), (Start: 13 @40137 has 13 MA's), (17, 40110), (24, 40044),

Gene: Jiawan_62 Start: 40222, Stop: 40067, Start Num: 12

Candidate Starts for Jiawan_62:

(2, 40510), (Start: 12 @40222 has 24 MA's), (17, 40195), (24, 40129),

Gene: Keziacharles14_64 Start: 41212, Stop: 41060, Start Num: 12

Candidate Starts for Keziacharles14_64:

(3, 41485), (Start: 12 @41212 has 24 MA's), (17, 41182), (18, 41179), (24, 41116),

Gene: Lilleskat_61 Start: 40058, Stop: 39900, Start Num: 12

Candidate Starts for Lilleskat_61:

(2, 40346), (Start: 12 @40058 has 24 MA's), (17, 40031), (24, 39965),

Gene: LoneWolf_65 Start: 40176, Stop: 40018, Start Num: 12

Candidate Starts for LoneWolf_65:

(10, 40197), (Start: 12 @40176 has 24 MA's), (17, 40149),

Gene: Maminiaina_63 Start: 40017, Stop: 39859, Start Num: 12

Candidate Starts for Maminiaina_63:

(Start: 12 @40017 has 24 MA's), (17, 39987), (24, 39921),

Gene: Myxus_64 Start: 40137, Stop: 39982, Start Num: 13
Candidate Starts for Myxus_64:
(9, 40161), (Start: 13 @40137 has 13 MA's), (17, 40110), (24, 40044),

Gene: Onglai_63 Start: 38478, Stop: 38323, Start Num: 12
Candidate Starts for Onglai_63:
(2, 38766), (Start: 12 @38478 has 24 MA's), (17, 38451), (24, 38385),

Gene: PackMan_63 Start: 40012, Stop: 39857, Start Num: 13
Candidate Starts for PackMan_63:
(9, 40036), (Start: 13 @40012 has 13 MA's), (17, 39985), (24, 39919),

Gene: Phaeder_64 Start: 40012, Stop: 39857, Start Num: 13
Candidate Starts for Phaeder_64:
(9, 40036), (Start: 13 @40012 has 13 MA's), (17, 39985), (24, 39919),

Gene: Phonnegut_65 Start: 40234, Stop: 40079, Start Num: 13
Candidate Starts for Phonnegut_65:
(9, 40258), (Start: 13 @40234 has 13 MA's), (17, 40207), (24, 40141),

Gene: Pioneer_65 Start: 40234, Stop: 40079, Start Num: 13
Candidate Starts for Pioneer_65:
(9, 40258), (Start: 13 @40234 has 13 MA's), (17, 40207), (24, 40141),

Gene: Priya_63 Start: 39861, Stop: 39706, Start Num: 12
Candidate Starts for Priya_63:
(2, 40149), (Start: 12 @39861 has 24 MA's), (17, 39834), (24, 39768),

Gene: Qobbit_63 Start: 39823, Stop: 39668, Start Num: 12
Candidate Starts for Qobbit_63:
(2, 40111), (Start: 12 @39823 has 24 MA's), (17, 39796), (24, 39730),

Gene: Rahalelujah_64 Start: 39776, Stop: 39618, Start Num: 12
Candidate Starts for Rahalelujah_64:
(5, 40019), (10, 39797), (Start: 12 @39776 has 24 MA's), (17, 39749), (21, 39725), (22, 39698),

Gene: Refuge_60 Start: 41000, Stop: 40842, Start Num: 12
Candidate Starts for Refuge_60:
(7, 41144), (9, 41024), (10, 41021), (Start: 12 @41000 has 24 MA's), (17, 40970), (21, 40946), (25, 40850),

Gene: RyeScarlet_66 Start: 40209, Stop: 40054, Start Num: 13
Candidate Starts for RyeScarlet_66:
(9, 40233), (Start: 13 @40209 has 13 MA's), (17, 40182), (24, 40116),

Gene: Sachima_60 Start: 40038, Stop: 39880, Start Num: 13
Candidate Starts for Sachima_60:
(9, 40062), (Start: 13 @40038 has 13 MA's), (17, 40011), (24, 39945),

Gene: Scherzo_65 Start: 40426, Stop: 40268, Start Num: 12
Candidate Starts for Scherzo_65:
(Start: 12 @40426 has 24 MA's), (17, 40396), (24, 40330),

Gene: SheaKeira_61 Start: 39614, Stop: 39462, Start Num: 13

Candidate Starts for SheaKeira_61:

(Start: 13 @39614 has 13 MA's), (16, 39596), (20, 39569),

Gene: Spouty_63 Start: 39860, Stop: 39705, Start Num: 12

Candidate Starts for Spouty_63:

(2, 40148), (Start: 12 @39860 has 24 MA's), (17, 39833), (24, 39767),

Gene: Toaka_65 Start: 40248, Stop: 40090, Start Num: 12

Candidate Starts for Toaka_65:

(5, 40491), (Start: 12 @40248 has 24 MA's), (17, 40221), (21, 40197),

Gene: Tubs_64 Start: 40012, Stop: 39857, Start Num: 13

Candidate Starts for Tubs_64:

(9, 40036), (Start: 13 @40012 has 13 MA's), (17, 39985), (24, 39919),

Gene: Ugenie5_61 Start: 40425, Stop: 40267, Start Num: 12

Candidate Starts for Ugenie5_61:

(Start: 12 @40425 has 24 MA's), (17, 40395), (24, 40329),

Gene: Vanisoa_64 Start: 41119, Stop: 40961, Start Num: 12

Candidate Starts for Vanisoa_64:

(Start: 12 @41119 has 24 MA's), (16, 41098), (17, 41089), (24, 41023),

Gene: Yecey3_65 Start: 40008, Stop: 39859, Start Num: 11

Candidate Starts for Yecey3_65:

(8, 40116), (10, 40023), (Start: 11 @40008 has 1 MA's), (19, 39978), (22, 39936), (23, 39933),

Gene: Zimmer_60 Start: 40828, Stop: 40670, Start Num: 12

Candidate Starts for Zimmer_60:

(1, 41128), (4, 41065), (10, 40849), (Start: 12 @40828 has 24 MA's), (14, 40822), (17, 40801),