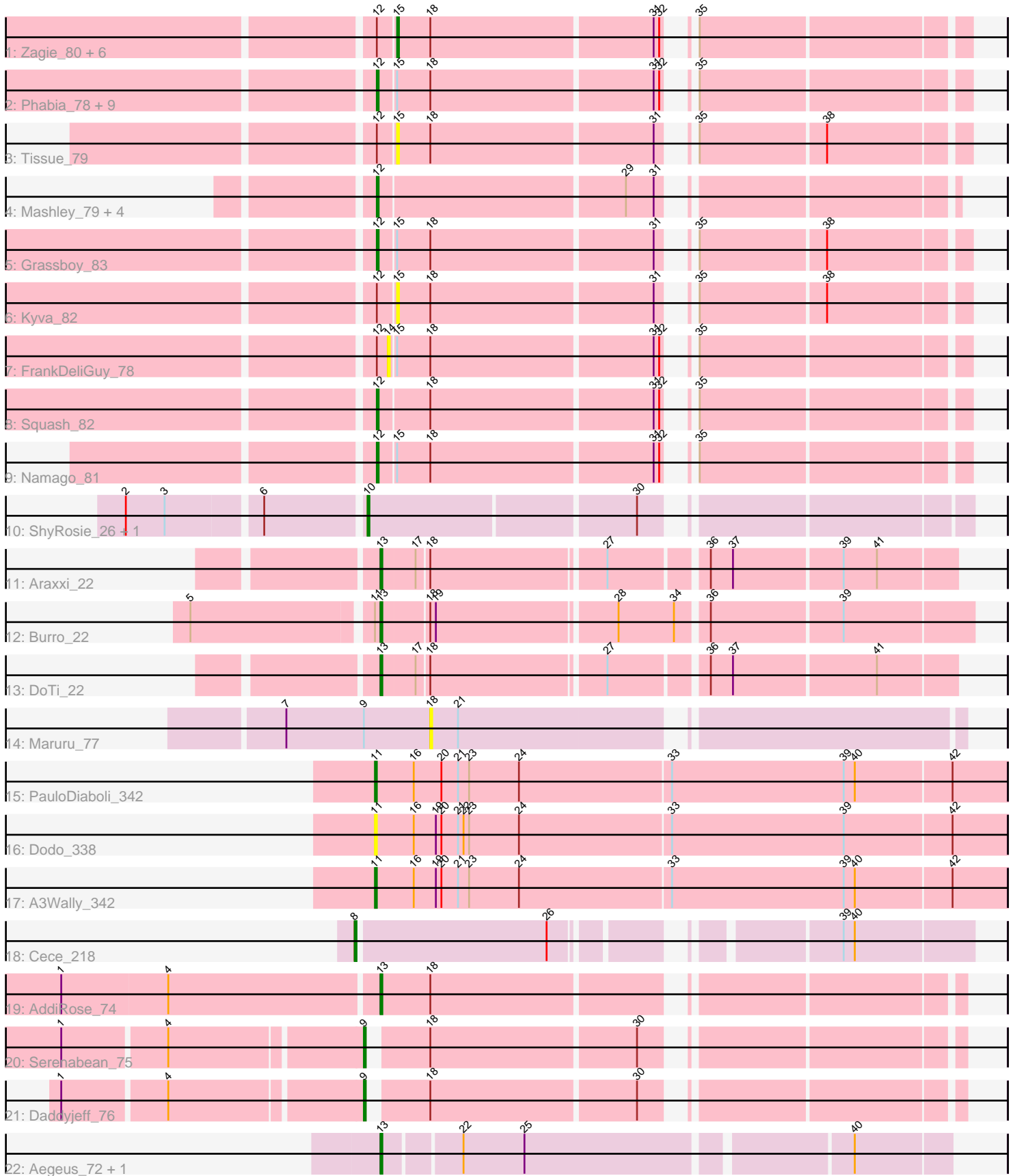


Pham 203077



Note: Tracks are now grouped by subcluster and scaled. Switching in subcluster is indicated by changes in track color. Track scale is now set by default to display the region 30 bp upstream of start 1 to 30 bp downstream of the last possible start. If this default region is judged to be packed too tightly with annotated starts, the track will be further scaled to only show that region of the ORF with annotated starts. This action will be indicated by adding "Zoomed" to the title. For starts, yellow indicates the location of called starts comprised solely of Glimmer/GeneMark auto-annotations, green indicates the location of called starts with at least 1 manual gene annotation.

Pham 203077 Report

This analysis was run 01/18/25 on database version 583.

Pham number 203077 has 43 members, 9 are drafts.

Phages represented in each track:

- Track 1 : Zagie_80, DonaldDuck_80, Rudy_76, BabyDotz_77, Judebell_78, Wayne3_80, Sillytadpoles_81
- Track 2 : Phabia_78, StrawberryJamm_84, Quammi_77, Viceroy_77, Jehoshaphat_80, Lonelysoil_76, Llemily_80, Casend_79, Teehee_79, Wheelie_78
- Track 3 : Tissue_79
- Track 4 : Mashley_79, Hyperion_77, Blab_75, AluminumJesus_75, Gazebo_79
- Track 5 : Grassboy_83
- Track 6 : Kyva_82
- Track 7 : FrankDeliGuy_78
- Track 8 : Squash_82
- Track 9 : Namago_81
- Track 10 : ShyRosie_26, Ashton_27
- Track 11 : Araxxi_22
- Track 12 : Burro_22
- Track 13 : DoTi_22
- Track 14 : Maruru_77
- Track 15 : PauloDiaboli_342
- Track 16 : Dodo_338
- Track 17 : A3Wally_342
- Track 18 : Cece_218
- Track 19 : AddiRose_74
- Track 20 : Serenabean_75
- Track 21 : Daddyjeff_76
- Track 22 : Aegeus_72, Baudelaire_72

Summary of Final Annotations (See graph section above for start numbers):

The start number called the most often in the published annotations is 12, it was called in 17 of the 34 non-draft genes in the pham.

Genes that call this "Most Annotated" start:

- AluminumJesus_75, Blab_75, Casend_79, Gazebo_79, Grassboy_83, Hyperion_77, Jehoshaphat_80, Llemily_80, Lonelysoil_76, Mashley_79, Namago_81, Phabia_78, Quammi_77, Squash_82, StrawberryJamm_84, Teehee_79, Viceroy_77,

Wheelie_78,

Genes that have the "Most Annotated" start but do not call it:

- BabyDotz_77, DonaldDuck_80, FrankDeliGuy_78, Judebell_78, Kyva_82, Rudy_76, Sillytadpoles_81, Tissue_79, Wayne3_80, Zagie_80,

Genes that do not have the "Most Annotated" start:

- A3Wally_342, AddiRose_74, Aegeus_72, Araxxi_22, Ashton_27, Baudelaire_72, Burro_22, Cece_218, Daddyjeff_76, DoTi_22, Dodo_338, Maruru_77, PauloDiaboli_342, Serenabean_75, ShyRosie_26,

Summary by start number:

Start 8:

- Found in 1 of 43 (2.3%) of genes in pham
- Manual Annotations of this start: 1 of 34
- Called 100.0% of time when present
- Phage (with cluster) where this start called: Cece_218 (GD3),

Start 9:

- Found in 3 of 43 (7.0%) of genes in pham
- Manual Annotations of this start: 2 of 34
- Called 66.7% of time when present
- Phage (with cluster) where this start called: Daddyjeff_76 (JA), Serenabean_75 (JA),

Start 10:

- Found in 2 of 43 (4.7%) of genes in pham
- Manual Annotations of this start: 1 of 34
- Called 100.0% of time when present
- Phage (with cluster) where this start called: Ashton_27 (EK2), ShyRosie_26 (EK2),

Start 11:

- Found in 4 of 43 (9.3%) of genes in pham
- Manual Annotations of this start: 2 of 34
- Called 75.0% of time when present
- Phage (with cluster) where this start called: A3Wally_342 (GD1), Dodo_338 (GD1), PauloDiaboli_342 (GD1),

Start 12:

- Found in 28 of 43 (65.1%) of genes in pham
- Manual Annotations of this start: 17 of 34
- Called 64.3% of time when present
- Phage (with cluster) where this start called: AluminumJesus_75 (EG), Blab_75 (EG), Casend_79 (EG), Gazebo_79 (EG), Grassboy_83 (EG), Hyperion_77 (EG), Jehoshaphat_80 (EG), Llemily_80 (EG), Lonelysoil_76 (EG), Mashley_79 (EG), Namago_81 (EG), Phabia_78 (EG), Quammi_77 (EG), Squash_82 (EG), StrawberryJamm_84 (EG), Teehee_79 (EG), Viceroy_77 (EG), Wheelie_78 (EG),

Start 13:

- Found in 6 of 43 (14.0%) of genes in pham
- Manual Annotations of this start: 6 of 34
- Called 100.0% of time when present

- Phage (with cluster) where this start called: AddiRose_74 (JA), Aegeus_72 (L5), Araxxi_22 (EM1), Baudelaire_72 (L5), Burro_22 (EM1), DoTi_22 (EM1),

Start 14:

- Found in 1 of 43 (2.3%) of genes in pham
- No Manual Annotations of this start.
- Called 100.0% of time when present
- Phage (with cluster) where this start called: FrankDeliGuy_78 (EG),

Start 15:

- Found in 22 of 43 (51.2%) of genes in pham
- Manual Annotations of this start: 5 of 34
- Called 40.9% of time when present
- Phage (with cluster) where this start called: BabyDotz_77 (EG), DonaldDuck_80 (EG), Judebell_78 (EG), Kyva_82 (EG), Rudy_76 (EG), Sillytadpoles_81 (EG), Tissue_79 (EG), Wayne3_80 (EG), Zagie_80 (EG),

Start 18:

- Found in 30 of 43 (69.8%) of genes in pham
- No Manual Annotations of this start.
- Called 3.3% of time when present
- Phage (with cluster) where this start called: Maruru_77 (FG),

Summary by clusters:

There are 8 clusters represented in this pham: GD1, GD3, EG, EK2, L5, EM1, FG, JA,

Info for manual annotations of cluster EG:

- Start number 12 was manually annotated 17 times for cluster EG.
- Start number 15 was manually annotated 5 times for cluster EG.

Info for manual annotations of cluster EK2:

- Start number 10 was manually annotated 1 time for cluster EK2.

Info for manual annotations of cluster EM1:

- Start number 13 was manually annotated 3 times for cluster EM1.

Info for manual annotations of cluster GD1:

- Start number 11 was manually annotated 2 times for cluster GD1.

Info for manual annotations of cluster GD3:

- Start number 8 was manually annotated 1 time for cluster GD3.

Info for manual annotations of cluster JA:

- Start number 9 was manually annotated 2 times for cluster JA.
- Start number 13 was manually annotated 1 time for cluster JA.

Info for manual annotations of cluster L5:

- Start number 13 was manually annotated 2 times for cluster L5.

Gene Information:

Gene: A3Wally_342 Start: 176311, Stop: 176649, Start Num: 11

Candidate Starts for A3Wally_342:

(Start: 11 @176311 has 2 MA's), (16, 176332), (19, 176344), (20, 176347), (21, 176356), (23, 176362), (24, 176389), (33, 176470), (39, 176563), (40, 176569), (42, 176620),

Gene: AddiRose_74 Start: 47344, Stop: 47628, Start Num: 13

Candidate Starts for AddiRose_74:

(1, 47176), (4, 47233), (Start: 13 @47344 has 6 MA's), (18, 47371),

Gene: Aegeus_72 Start: 46824, Stop: 47111, Start Num: 13

Candidate Starts for Aegeus_72:

(Start: 13 @46824 has 6 MA's), (22, 46863), (25, 46896), (40, 47061),

Gene: AluminumJesus_75 Start: 51316, Stop: 51035, Start Num: 12

Candidate Starts for AluminumJesus_75:

(Start: 12 @51316 has 17 MA's), (29, 51187), (31, 51172),

Gene: Araxxi_22 Start: 16801, Stop: 16511, Start Num: 13

Candidate Starts for Araxxi_22:

(Start: 13 @16801 has 6 MA's), (17, 16783), (18, 16777), (27, 16687), (36, 16639), (37, 16627), (39, 16570), (41, 16552),

Gene: Ashton_27 Start: 15701, Stop: 15408, Start Num: 10

Candidate Starts for Ashton_27:

(2, 15821), (3, 15800), (6, 15752), (Start: 10 @15701 has 1 MA's), (30, 15563),

Gene: BabyDotz_77 Start: 52957, Stop: 52679, Start Num: 15

Candidate Starts for BabyDotz_77:

(Start: 12 @52966 has 17 MA's), (Start: 15 @52957 has 5 MA's), (18, 52939), (31, 52822), (32, 52819), (35, 52816),

Gene: Baudelaire_72 Start: 46824, Stop: 47111, Start Num: 13

Candidate Starts for Baudelaire_72:

(Start: 13 @46824 has 6 MA's), (22, 46863), (25, 46896), (40, 47061),

Gene: Blab_75 Start: 51607, Stop: 51326, Start Num: 12

Candidate Starts for Blab_75:

(Start: 12 @51607 has 17 MA's), (29, 51478), (31, 51463),

Gene: Burro_22 Start: 15917, Stop: 15615, Start Num: 13

Candidate Starts for Burro_22:

(5, 16013), (Start: 11 @15920 has 2 MA's), (Start: 13 @15917 has 6 MA's), (18, 15893), (19, 15890), (28, 15797), (34, 15767), (36, 15752), (39, 15683),

Gene: Casend_79 Start: 52248, Stop: 51961, Start Num: 12

Candidate Starts for Casend_79:

(Start: 12 @52248 has 17 MA's), (Start: 15 @52239 has 5 MA's), (18, 52221), (31, 52104), (32, 52101), (35, 52098),

Gene: Cece_218 Start: 133451, Stop: 133741, Start Num: 8

Candidate Starts for Cece_218:

(Start: 8 @133451 has 1 MA's), (26, 133550), (39, 133673), (40, 133679),

Gene: Daddyjeff_76 Start: 47745, Stop: 48029, Start Num: 9

Candidate Starts for Daddyjeff_76:

(1, 47595), (4, 47649), (Start: 9 @47745 has 2 MA's), (18, 47772), (30, 47880),

Gene: DoTi_22 Start: 16882, Stop: 16592, Start Num: 13

Candidate Starts for DoTi_22:

(Start: 13 @16882 has 6 MA's), (17, 16864), (18, 16858), (27, 16768), (36, 16720), (37, 16708), (41, 16633),

Gene: Dodo_338 Start: 175376, Stop: 175714, Start Num: 11

Candidate Starts for Dodo_338:

(Start: 11 @175376 has 2 MA's), (16, 175397), (19, 175409), (20, 175412), (21, 175421), (22, 175424), (23, 175427), (24, 175454), (33, 175535), (39, 175628), (42, 175685),

Gene: DonaldDuck_80 Start: 51591, Stop: 51313, Start Num: 15

Candidate Starts for DonaldDuck_80:

(Start: 12 @51600 has 17 MA's), (Start: 15 @51591 has 5 MA's), (18, 51573), (31, 51456), (32, 51453), (35, 51450),

Gene: FrankDeliGuy_78 Start: 51962, Stop: 51681, Start Num: 14

Candidate Starts for FrankDeliGuy_78:

(Start: 12 @51968 has 17 MA's), (14, 51962), (Start: 15 @51959 has 5 MA's), (18, 51941), (31, 51824), (32, 51821), (35, 51818),

Gene: Gazebo_79 Start: 52534, Stop: 52253, Start Num: 12

Candidate Starts for Gazebo_79:

(Start: 12 @52534 has 17 MA's), (29, 52405), (31, 52390),

Gene: Grassboy_83 Start: 52649, Stop: 52362, Start Num: 12

Candidate Starts for Grassboy_83:

(Start: 12 @52649 has 17 MA's), (Start: 15 @52640 has 5 MA's), (18, 52622), (31, 52505), (35, 52499), (38, 52433),

Gene: Hyperion_77 Start: 51797, Stop: 51516, Start Num: 12

Candidate Starts for Hyperion_77:

(Start: 12 @51797 has 17 MA's), (29, 51668), (31, 51653),

Gene: Jehoshaphat_80 Start: 52516, Stop: 52229, Start Num: 12

Candidate Starts for Jehoshaphat_80:

(Start: 12 @52516 has 17 MA's), (Start: 15 @52507 has 5 MA's), (18, 52489), (31, 52372), (32, 52369), (35, 52366),

Gene: Judebell_78 Start: 51731, Stop: 51453, Start Num: 15

Candidate Starts for Judebell_78:

(Start: 12 @51740 has 17 MA's), (Start: 15 @51731 has 5 MA's), (18, 51713), (31, 51596), (32, 51593), (35, 51590),

Gene: Kyva_82 Start: 52664, Stop: 52386, Start Num: 15

Candidate Starts for Kyva_82:

(Start: 12 @52673 has 17 MA's), (Start: 15 @52664 has 5 MA's), (18, 52646), (31, 52529), (35, 52523), (38, 52457),

Gene: Llemily_80 Start: 51295, Stop: 51008, Start Num: 12

Candidate Starts for Llemily_80:

(Start: 12 @51295 has 17 MA's), (Start: 15 @51286 has 5 MA's), (18, 51268), (31, 51151), (32, 51148), (35, 51145),

Gene: Lonelysoil_76 Start: 51052, Stop: 50765, Start Num: 12

Candidate Starts for Lonelysoil_76:

(Start: 12 @51052 has 17 MA's), (Start: 15 @51043 has 5 MA's), (18, 51025), (31, 50908), (32, 50905), (35, 50902),

Gene: Maruru_77 Start: 48413, Stop: 48679, Start Num: 18

Candidate Starts for Maruru_77:

(7, 48335), (Start: 9 @48377 has 2 MA's), (18, 48413), (21, 48428),

Gene: Mashley_79 Start: 52319, Stop: 52038, Start Num: 12

Candidate Starts for Mashley_79:

(Start: 12 @52319 has 17 MA's), (29, 52190), (31, 52175),

Gene: Namago_81 Start: 52020, Stop: 51733, Start Num: 12

Candidate Starts for Namago_81:

(Start: 12 @52020 has 17 MA's), (Start: 15 @52011 has 5 MA's), (18, 51993), (31, 51876), (32, 51873), (35, 51870),

Gene: PauloDiaboli_342 Start: 173467, Stop: 173805, Start Num: 11

Candidate Starts for PauloDiaboli_342:

(Start: 11 @173467 has 2 MA's), (16, 173488), (20, 173503), (21, 173512), (23, 173518), (24, 173545), (33, 173626), (39, 173719), (40, 173725), (42, 173776),

Gene: Phabia_78 Start: 51707, Stop: 51420, Start Num: 12

Candidate Starts for Phabia_78:

(Start: 12 @51707 has 17 MA's), (Start: 15 @51698 has 5 MA's), (18, 51680), (31, 51563), (32, 51560), (35, 51557),

Gene: Quammi_77 Start: 51407, Stop: 51120, Start Num: 12

Candidate Starts for Quammi_77:

(Start: 12 @51407 has 17 MA's), (Start: 15 @51398 has 5 MA's), (18, 51380), (31, 51263), (32, 51260), (35, 51257),

Gene: Rudy_76 Start: 51434, Stop: 51156, Start Num: 15

Candidate Starts for Rudy_76:

(Start: 12 @51443 has 17 MA's), (Start: 15 @51434 has 5 MA's), (18, 51416), (31, 51299), (32, 51296), (35, 51293),

Gene: Serenabean_75 Start: 47658, Stop: 47942, Start Num: 9

Candidate Starts for Serenabean_75:

(1, 47508), (4, 47562), (Start: 9 @47658 has 2 MA's), (18, 47685), (30, 47793),

Gene: ShyRosie_26 Start: 15707, Stop: 15414, Start Num: 10

Candidate Starts for ShyRosie_26:

(2, 15827), (3, 15806), (6, 15758), (Start: 10 @15707 has 1 MA's), (30, 15569),

Gene: Sillytadpoles_81 Start: 51274, Stop: 50996, Start Num: 15

Candidate Starts for Sillytadpoles_81:

(Start: 12 @51283 has 17 MA's), (Start: 15 @51274 has 5 MA's), (18, 51256), (31, 51139), (32, 51136), (35, 51133),

Gene: Squash_82 Start: 52656, Stop: 52369, Start Num: 12

Candidate Starts for Squash_82:

(Start: 12 @52656 has 17 MA's), (18, 52629), (31, 52512), (32, 52509), (35, 52506),

Gene: StrawberryJamm_84 Start: 51823, Stop: 51536, Start Num: 12

Candidate Starts for StrawberryJamm_84:

(Start: 12 @51823 has 17 MA's), (Start: 15 @51814 has 5 MA's), (18, 51796), (31, 51679), (32, 51676), (35, 51673),

Gene: Teehee_79 Start: 52513, Stop: 52226, Start Num: 12

Candidate Starts for Teehee_79:

(Start: 12 @52513 has 17 MA's), (Start: 15 @52504 has 5 MA's), (18, 52486), (31, 52369), (32, 52366), (35, 52363),

Gene: Tissue_79 Start: 52271, Stop: 51993, Start Num: 15

Candidate Starts for Tissue_79:

(Start: 12 @52280 has 17 MA's), (Start: 15 @52271 has 5 MA's), (18, 52253), (31, 52136), (35, 52130), (38, 52064),

Gene: Viceroy_77 Start: 51416, Stop: 51129, Start Num: 12

Candidate Starts for Viceroy_77:

(Start: 12 @51416 has 17 MA's), (Start: 15 @51407 has 5 MA's), (18, 51389), (31, 51272), (32, 51269), (35, 51266),

Gene: Wayne3_80 Start: 52267, Stop: 51989, Start Num: 15

Candidate Starts for Wayne3_80:

(Start: 12 @52276 has 17 MA's), (Start: 15 @52267 has 5 MA's), (18, 52249), (31, 52132), (32, 52129), (35, 52126),

Gene: Wheelie_78 Start: 51597, Stop: 51310, Start Num: 12

Candidate Starts for Wheelie_78:

(Start: 12 @51597 has 17 MA's), (Start: 15 @51588 has 5 MA's), (18, 51570), (31, 51453), (32, 51450), (35, 51447),

Gene: Zagie_80 Start: 52091, Stop: 51813, Start Num: 15

Candidate Starts for Zagie_80:

(Start: 12 @52100 has 17 MA's), (Start: 15 @52091 has 5 MA's), (18, 52073), (31, 51956), (32, 51953), (35, 51950),