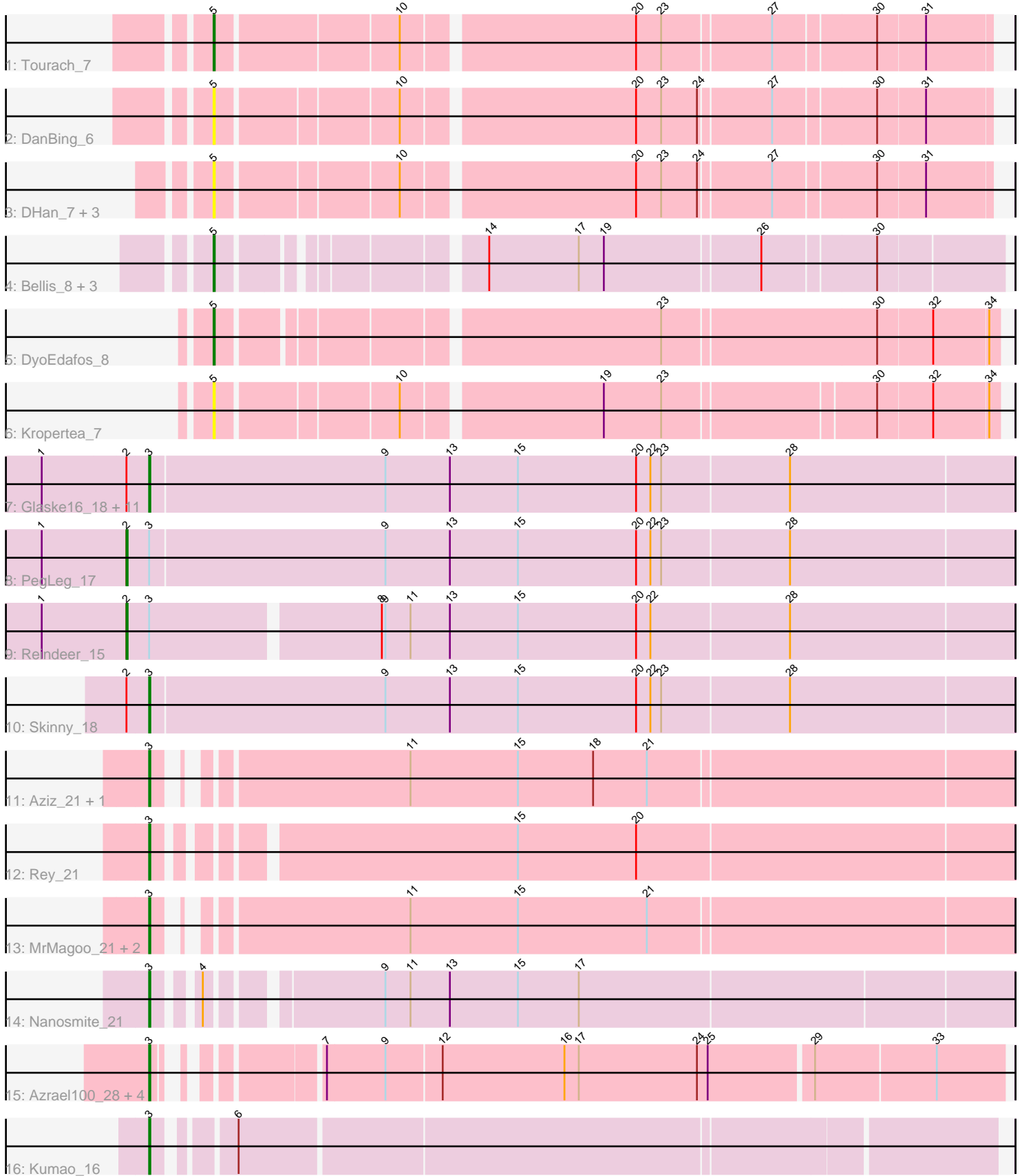


Pham 203098



Note: Tracks are now grouped by subcluster and scaled. Switching in subcluster is indicated by changes in track color. Track scale is now set by default to display the region 30 bp upstream of start 1 to 30 bp downstream of the last possible start. If this default region is judged to be packed too tightly with annotated starts, the track will be further scaled to only show that region of the ORF with annotated starts. This action will be indicated by adding "Zoomed" to the title. For starts, yellow indicates the location of called starts comprised solely of Glimmer/GeneMark auto-annotations, green indicates the location of called starts with at least 1 manual gene annotation.

Pham 203098 Report

This analysis was run 01/18/25 on database version 583.

Pham number 203098 has 40 members, 9 are drafts.

Phages represented in each track:

- Track 1 : Tourach_7
- Track 2 : DanBing_6
- Track 3 : DHan_7, Claus_7, Baoshan_6, ZhongYanYuan_6
- Track 4 : Bellis_8, Samty_8, Finnry_8, Moostard_8
- Track 5 : DyoEdafos_8
- Track 6 : Kropertea_7
- Track 7 : Glaske16_18, Bricole_17, Diminimus_18, Dulcita_18, IPhane7_17, Bongo_17, FreakyGoo_17, SlimJimmy_16, LilhomieP_16, Izel_16, TyDawg_17, Auspice_17
- Track 8 : PegLeg_17
- Track 9 : Reindeer_15
- Track 10 : Skinny_18
- Track 11 : Aziz_21, GenevaB15_21
- Track 12 : Rey_21
- Track 13 : MrMagoo_21, Estes_22, GardenSalsa_21
- Track 14 : Nanosmite_21
- Track 15 : Azrael100_28, MaryV_29, EniyanLRS_26, Cosmo_29, Wildcat_29
- Track 16 : Kumao_16

Summary of Final Annotations (See graph section above for start numbers):

The start number called the most often in the published annotations is 3, it was called in 24 of the 31 non-draft genes in the pham.

Genes that call this "Most Annotated" start:

- Auspice_17, Aziz_21, Azrael100_28, Bongo_17, Bricole_17, Cosmo_29, Diminimus_18, Dulcita_18, EniyanLRS_26, Estes_22, FreakyGoo_17, GardenSalsa_21, GenevaB15_21, Glaske16_18, IPhane7_17, Izel_16, Kumao_16, LilhomieP_16, MaryV_29, MrMagoo_21, Nanosmite_21, Rey_21, Skinny_18, SlimJimmy_16, TyDawg_17, Wildcat_29,

Genes that have the "Most Annotated" start but do not call it:

- PegLeg_17, Reindeer_15,

Genes that do not have the "Most Annotated" start:

- Baoshan_6, Bellis_8, Claus_7, DHan_7, DanBing_6, DyoEdafos_8, Finnry_8, Kropertea_7, Moostard_8, Samty_8, Tourach_7, ZhongYanYuan_6,

Summary by start number:

Start 2:

- Found in 15 of 40 (37.5%) of genes in pham
- Manual Annotations of this start: 2 of 31
- Called 13.3% of time when present
- Phage (with cluster) where this start called: PegLeg_17 (M1), Reindeer_15 (M1),

Start 3:

- Found in 28 of 40 (70.0%) of genes in pham
- Manual Annotations of this start: 24 of 31
- Called 92.9% of time when present
- Phage (with cluster) where this start called: Auspice_17 (M1), Aziz_21 (M2), Azrael100_28 (V), Bongo_17 (M1), Bricole_17 (M1), Cosmo_29 (V), Diminimus_18 (M1), Dulcita_18 (M1), EniyanLRS_26 (V), Estes_22 (M2), FreakyGoo_17 (M1), GardenSalsa_21 (M2), GenevaB15_21 (M2), Glaske16_18 (M1), IPhane7_17 (M1), Izel_16 (M1), Kumao_16 (singleton), LilhomieP_16 (M1), MaryV_29 (V), MrMagoo_21 (M2), Nanosmite_21 (M3), Rey_21 (M2), Skinny_18 (M1), SlimJimmy_16 (M1), TyDawg_17 (M1), Wildcat_29 (V),

Start 5:

- Found in 12 of 40 (30.0%) of genes in pham
- Manual Annotations of this start: 5 of 31
- Called 100.0% of time when present
- Phage (with cluster) where this start called: Baoshan_6 (L2), Bellis_8 (L3), Claus_7 (L2), DHan_7 (L2), DanBing_6 (L2), DyoEdafos_8 (L4), Finnry_8 (L3), Kropertea_7 (L4), Moostard_8 (L3), Samty_8 (L3), Tourach_7 (L2), ZhongYanYuan_6 (L2),

Summary by clusters:

There are 8 clusters represented in this pham: singleton, V, L4, L2, L3, M3, M2, M1,

Info for manual annotations of cluster L2:

- Start number 5 was manually annotated 1 time for cluster L2.

Info for manual annotations of cluster L3:

- Start number 5 was manually annotated 3 times for cluster L3.

Info for manual annotations of cluster L4:

- Start number 5 was manually annotated 1 time for cluster L4.

Info for manual annotations of cluster M1:

- Start number 2 was manually annotated 2 times for cluster M1.
- Start number 3 was manually annotated 11 times for cluster M1.

Info for manual annotations of cluster M2:

- Start number 3 was manually annotated 6 times for cluster M2.

Info for manual annotations of cluster M3:

- Start number 3 was manually annotated 1 time for cluster M3.

Info for manual annotations of cluster V:

- Start number 3 was manually annotated 5 times for cluster V.

Gene Information:

Gene: Auspice_17 Start: 9093, Stop: 9809, Start Num: 3

Candidate Starts for Auspice_17:

(1, 9006), (Start: 2 @9075 has 2 MA's), (Start: 3 @9093 has 24 MA's), (9, 9288), (13, 9342), (15, 9399), (20, 9498), (22, 9510), (23, 9519), (28, 9624),

Gene: Aziz_21 Start: 9693, Stop: 10367, Start Num: 3

Candidate Starts for Aziz_21:

(Start: 3 @9693 has 24 MA's), (11, 9870), (15, 9960), (18, 10023), (21, 10068),

Gene: Azrael100_28 Start: 12267, Stop: 12920, Start Num: 3

Candidate Starts for Azrael100_28:

(Start: 3 @12267 has 24 MA's), (7, 12366), (9, 12414), (12, 12459), (16, 12561), (17, 12573), (24, 12672), (25, 12681), (29, 12765), (33, 12864),

Gene: Baoshan_6 Start: 5250, Stop: 5855, Start Num: 5

Candidate Starts for Baoshan_6:

(Start: 5 @5250 has 5 MA's), (10, 5391), (20, 5574), (23, 5595), (24, 5625), (27, 5682), (30, 5763), (31, 5802),

Gene: Bellis_8 Start: 5538, Stop: 6137, Start Num: 5

Candidate Starts for Bellis_8:

(Start: 5 @5538 has 5 MA's), (14, 5724), (17, 5799), (19, 5820), (26, 5946), (30, 6036),

Gene: Bongo_17 Start: 9093, Stop: 9809, Start Num: 3

Candidate Starts for Bongo_17:

(1, 9006), (Start: 2 @9075 has 2 MA's), (Start: 3 @9093 has 24 MA's), (9, 9288), (13, 9342), (15, 9399), (20, 9498), (22, 9510), (23, 9519), (28, 9624),

Gene: Bricole_17 Start: 9092, Stop: 9808, Start Num: 3

Candidate Starts for Bricole_17:

(1, 9005), (Start: 2 @9074 has 2 MA's), (Start: 3 @9092 has 24 MA's), (9, 9287), (13, 9341), (15, 9398), (20, 9497), (22, 9509), (23, 9518), (28, 9623),

Gene: Claus_7 Start: 5430, Stop: 6035, Start Num: 5

Candidate Starts for Claus_7:

(Start: 5 @5430 has 5 MA's), (10, 5571), (20, 5754), (23, 5775), (24, 5805), (27, 5862), (30, 5943), (31, 5982),

Gene: Cosmo_29 Start: 12274, Stop: 12927, Start Num: 3

Candidate Starts for Cosmo_29:

(Start: 3 @12274 has 24 MA's), (7, 12373), (9, 12421), (12, 12466), (16, 12568), (17, 12580), (24, 12679), (25, 12688), (29, 12772), (33, 12871),

Gene: DHan_7 Start: 5366, Stop: 5971, Start Num: 5

Candidate Starts for DHan_7:

(Start: 5 @5366 has 5 MA's), (10, 5507), (20, 5690), (23, 5711), (24, 5741), (27, 5798), (30, 5879), (31, 5918),

Gene: DanBing_6 Start: 5249, Stop: 5854, Start Num: 5

Candidate Starts for DanBing_6:

(Start: 5 @5249 has 5 MA's), (10, 5390), (20, 5573), (23, 5594), (24, 5624), (27, 5681), (30, 5762), (31, 5801),

Gene: Diminimus_18 Start: 9092, Stop: 9808, Start Num: 3

Candidate Starts for Diminimus_18:

(1, 9005), (Start: 2 @9074 has 2 MA's), (Start: 3 @9092 has 24 MA's), (9, 9287), (13, 9341), (15, 9398), (20, 9497), (22, 9509), (23, 9518), (28, 9623),

Gene: Dulcita_18 Start: 9092, Stop: 9808, Start Num: 3

Candidate Starts for Dulcita_18:

(1, 9005), (Start: 2 @9074 has 2 MA's), (Start: 3 @9092 has 24 MA's), (9, 9287), (13, 9341), (15, 9398), (20, 9497), (22, 9509), (23, 9518), (28, 9623),

Gene: DyoEdafos_8 Start: 5282, Stop: 5893, Start Num: 5

Candidate Starts for DyoEdafos_8:

(Start: 5 @5282 has 5 MA's), (23, 5621), (30, 5795), (32, 5840), (34, 5885),

Gene: EniyanLRS_26 Start: 11965, Stop: 12621, Start Num: 3

Candidate Starts for EniyanLRS_26:

(Start: 3 @11965 has 24 MA's), (7, 12067), (9, 12115), (12, 12160), (16, 12262), (17, 12274), (24, 12373), (25, 12382), (29, 12466), (33, 12565),

Gene: Estes_22 Start: 9832, Stop: 10506, Start Num: 3

Candidate Starts for Estes_22:

(Start: 3 @9832 has 24 MA's), (11, 10009), (15, 10099), (21, 10207),

Gene: Finnry_8 Start: 5539, Stop: 6138, Start Num: 5

Candidate Starts for Finnry_8:

(Start: 5 @5539 has 5 MA's), (14, 5725), (17, 5800), (19, 5821), (26, 5947), (30, 6037),

Gene: FreakyGoo_17 Start: 9093, Stop: 9809, Start Num: 3

Candidate Starts for FreakyGoo_17:

(1, 9006), (Start: 2 @9075 has 2 MA's), (Start: 3 @9093 has 24 MA's), (9, 9288), (13, 9342), (15, 9399), (20, 9498), (22, 9510), (23, 9519), (28, 9624),

Gene: GardenSalsa_21 Start: 9666, Stop: 10340, Start Num: 3

Candidate Starts for GardenSalsa_21:

(Start: 3 @9666 has 24 MA's), (11, 9843), (15, 9933), (21, 10041),

Gene: GenevaB15_21 Start: 9693, Stop: 10367, Start Num: 3

Candidate Starts for GenevaB15_21:

(Start: 3 @9693 has 24 MA's), (11, 9870), (15, 9960), (18, 10023), (21, 10068),

Gene: Glaske16_18 Start: 9092, Stop: 9808, Start Num: 3

Candidate Starts for Glaske16_18:

(1, 9005), (Start: 2 @9074 has 2 MA's), (Start: 3 @9092 has 24 MA's), (9, 9287), (13, 9341), (15, 9398), (20, 9497), (22, 9509), (23, 9518), (28, 9623),

Gene: IPhane7_17 Start: 9093, Stop: 9809, Start Num: 3

Candidate Starts for IPhane7_17:

(1, 9006), (Start: 2 @9075 has 2 MA's), (Start: 3 @9093 has 24 MA's), (9, 9288), (13, 9342), (15, 9399), (20, 9498), (22, 9510), (23, 9519), (28, 9624),

Gene: Izel_16 Start: 9092, Stop: 9808, Start Num: 3

Candidate Starts for Izel_16:

(1, 9005), (Start: 2 @9074 has 2 MA's), (Start: 3 @9092 has 24 MA's), (9, 9287), (13, 9341), (15, 9398), (20, 9497), (22, 9509), (23, 9518), (28, 9623),

Gene: Kropertea_7 Start: 5089, Stop: 5700, Start Num: 5

Candidate Starts for Kropertea_7:

(Start: 5 @5089 has 5 MA's), (10, 5230), (19, 5386), (23, 5434), (30, 5602), (32, 5647), (34, 5692),

Gene: Kumao_16 Start: 8489, Stop: 9151, Start Num: 3

Candidate Starts for Kumao_16:

(Start: 3 @8489 has 24 MA's), (6, 8540),

Gene: LilhomieP_16 Start: 9093, Stop: 9809, Start Num: 3

Candidate Starts for LilhomieP_16:

(1, 9006), (Start: 2 @9075 has 2 MA's), (Start: 3 @9093 has 24 MA's), (9, 9288), (13, 9342), (15, 9399), (20, 9498), (22, 9510), (23, 9519), (28, 9624),

Gene: MaryV_29 Start: 12237, Stop: 12893, Start Num: 3

Candidate Starts for MaryV_29:

(Start: 3 @12237 has 24 MA's), (7, 12339), (9, 12387), (12, 12432), (16, 12534), (17, 12546), (24, 12645), (25, 12654), (29, 12738), (33, 12837),

Gene: Moostard_8 Start: 5538, Stop: 6137, Start Num: 5

Candidate Starts for Moostard_8:

(Start: 5 @5538 has 5 MA's), (14, 5724), (17, 5799), (19, 5820), (26, 5946), (30, 6036),

Gene: MrMagoo_21 Start: 9666, Stop: 10340, Start Num: 3

Candidate Starts for MrMagoo_21:

(Start: 3 @9666 has 24 MA's), (11, 9843), (15, 9933), (21, 10041),

Gene: Nanosmite_21 Start: 9886, Stop: 10557, Start Num: 3

Candidate Starts for Nanosmite_21:

(Start: 3 @9886 has 24 MA's), (4, 9913), (9, 10039), (11, 10060), (13, 10093), (15, 10150), (17, 10201),

Gene: PegLeg_17 Start: 9074, Stop: 9808, Start Num: 2

Candidate Starts for PegLeg_17:

(1, 9005), (Start: 2 @9074 has 2 MA's), (Start: 3 @9092 has 24 MA's), (9, 9287), (13, 9341), (15, 9398), (20, 9497), (22, 9509), (23, 9518), (28, 9623),

Gene: Reindeer_15 Start: 8937, Stop: 9662, Start Num: 2

Candidate Starts for Reindeer_15:

(1, 8868), (Start: 2 @8937 has 2 MA's), (Start: 3 @8955 has 24 MA's), (8, 9138), (9, 9141), (11, 9162), (13, 9195), (15, 9252), (20, 9351), (22, 9363), (28, 9477),

Gene: Rey_21 Start: 9898, Stop: 10575, Start Num: 3

Candidate Starts for Rey_21:

(Start: 3 @9898 has 24 MA's), (15, 10165), (20, 10264),

Gene: Samty_8 Start: 5538, Stop: 6137, Start Num: 5

Candidate Starts for Samty_8:

(Start: 5 @5538 has 5 MA's), (14, 5724), (17, 5799), (19, 5820), (26, 5946), (30, 6036),

Gene: Skinny_18 Start: 9093, Stop: 9809, Start Num: 3

Candidate Starts for Skinny_18:

(Start: 2 @9075 has 2 MA's), (Start: 3 @9093 has 24 MA's), (9, 9288), (13, 9342), (15, 9399), (20, 9498), (22, 9510), (23, 9519), (28, 9624),

Gene: SlimJimmy_16 Start: 9092, Stop: 9808, Start Num: 3

Candidate Starts for SlimJimmy_16:

(1, 9005), (Start: 2 @9074 has 2 MA's), (Start: 3 @9092 has 24 MA's), (9, 9287), (13, 9341), (15, 9398), (20, 9497), (22, 9509), (23, 9518), (28, 9623),

Gene: Tourach_7 Start: 5433, Stop: 6041, Start Num: 5

Candidate Starts for Tourach_7:

(Start: 5 @5433 has 5 MA's), (10, 5577), (20, 5760), (23, 5781), (27, 5868), (30, 5949), (31, 5988),

Gene: TyDawg_17 Start: 9093, Stop: 9809, Start Num: 3

Candidate Starts for TyDawg_17:

(1, 9006), (Start: 2 @9075 has 2 MA's), (Start: 3 @9093 has 24 MA's), (9, 9288), (13, 9342), (15, 9399), (20, 9498), (22, 9510), (23, 9519), (28, 9624),

Gene: Wildcat_29 Start: 12247, Stop: 12903, Start Num: 3

Candidate Starts for Wildcat_29:

(Start: 3 @12247 has 24 MA's), (7, 12349), (9, 12397), (12, 12442), (16, 12544), (17, 12556), (24, 12655), (25, 12664), (29, 12748), (33, 12847),

Gene: ZhongYanYuan_6 Start: 5250, Stop: 5855, Start Num: 5

Candidate Starts for ZhongYanYuan_6:

(Start: 5 @5250 has 5 MA's), (10, 5391), (20, 5574), (23, 5595), (24, 5625), (27, 5682), (30, 5763), (31, 5802),