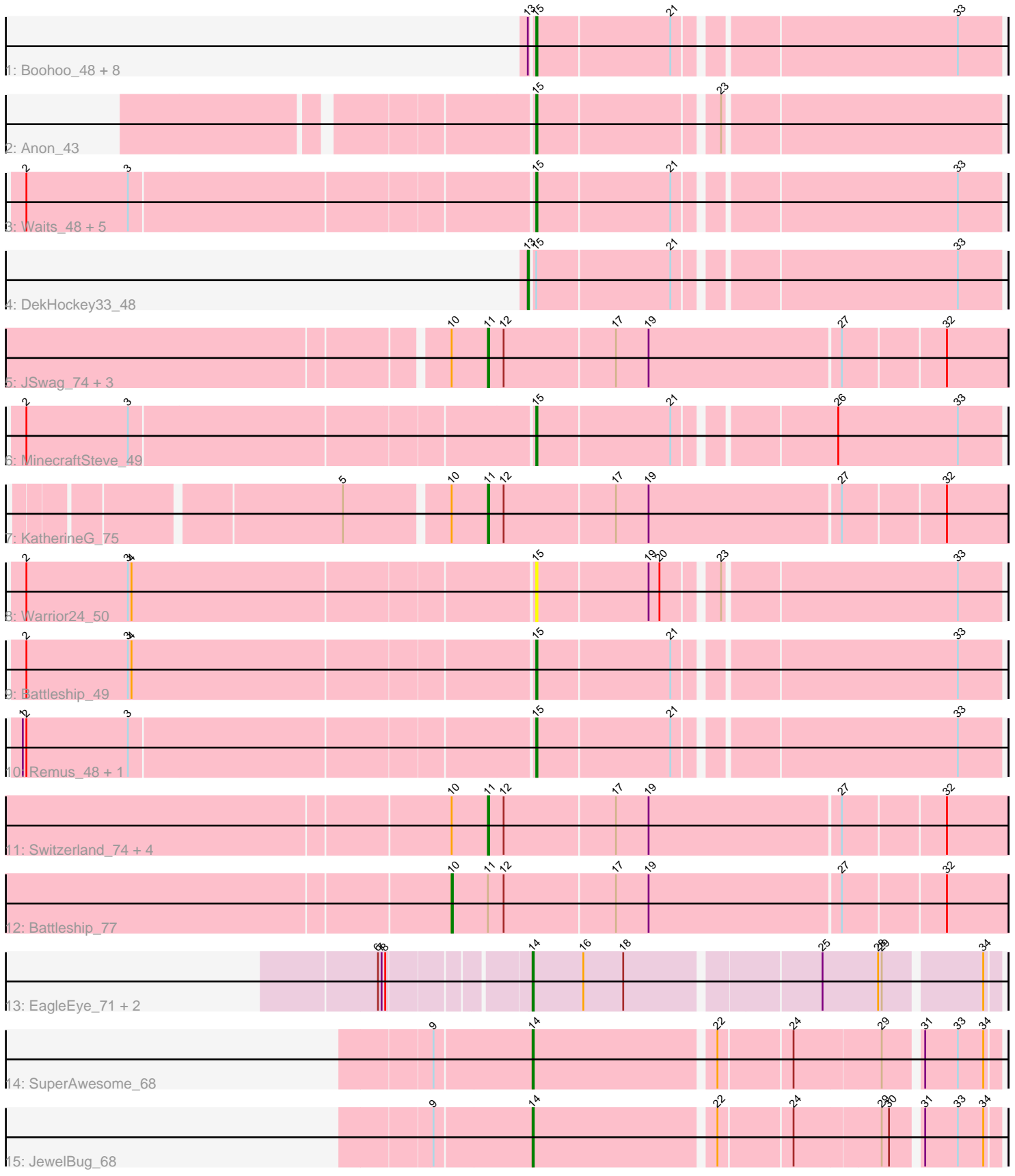


Pham 203118



Note: Tracks are now grouped by subcluster and scaled. Switching in subcluster is indicated by changes in track color. Track scale is now set by default to display the region 30 bp upstream of start 1 to 30 bp downstream of the last possible start. If this default region is judged to be packed too tightly with annotated starts, the track will be further scaled to only show that region of the ORF with annotated starts. This action will be indicated by adding "Zoomed" to the title. For starts, yellow indicates the location of called starts comprised solely of Glimmer/GeneMark auto-annotations, green indicates the location of called starts with at least 1 manual gene annotation.

Pham 203118 Report

This analysis was run 01/18/25 on database version 583.

Pham number 203118 has 38 members, 2 are drafts.

Phages represented in each track:

- Track 1 : Boohoo_48, Soups_48, KatherineG_49, ShayRa_49, Anaysia_48, LastResort_47, ReMo_47, Looper_48, Nebulosus_47
- Track 2 : Anon_43
- Track 3 : Waits_48, Switzerland_48, Rosalind_47, Epsocamisio_47, JSwag_47, Oofda_49
- Track 4 : DekHockey33_48
- Track 5 : JSwag_74, MinecraftSteve_75, Epsocamisio_71, Nebulosus_72
- Track 6 : MinecraftSteve_49
- Track 7 : KatherineG_75
- Track 8 : Warrior24_50
- Track 9 : Battleship_49
- Track 10 : Remus_48, Strosahl_48
- Track 11 : Switzerland_74, Soups_75, DekHockey33_76, ShayRa_75, Rosalind_73
- Track 12 : Battleship_77
- Track 13 : EagleEye_71, Lucyedi_70, PainterBoy_69
- Track 14 : SuperAwesome_68
- Track 15 : JewelBug_68

Summary of Final Annotations (See graph section above for start numbers):

The start number called the most often in the published annotations is 15, it was called in 19 of the 36 non-draft genes in the pham.

Genes that call this "Most Annotated" start:

- Anaysia_48, Anon_43, Battleship_49, Boohoo_48, Epsocamisio_47, JSwag_47, KatherineG_49, LastResort_47, Looper_48, MinecraftSteve_49, Nebulosus_47, Oofda_49, ReMo_47, Remus_48, Rosalind_47, ShayRa_49, Soups_48, Strosahl_48, Switzerland_48, Waits_48, Warrior24_50,

Genes that have the "Most Annotated" start but do not call it:

- DekHockey33_48,

Genes that do not have the "Most Annotated" start:

- Battleship_77, DekHockey33_76, EagleEye_71, Epsocamisio_71, JSwag_74, JewelBug_68, KatherineG_75, Lucyedi_70, MinecraftSteve_75, Nebulosus_72, PainterBoy_69, Rosalind_73, ShayRa_75, Soups_75, SuperAwesome_68, Switzerland_74,

Summary by start number:

Start 10:

- Found in 11 of 38 (28.9%) of genes in pham
- Manual Annotations of this start: 1 of 36
- Called 9.1% of time when present
- Phage (with cluster) where this start called: Battleship_77 (A15),

Start 11:

- Found in 11 of 38 (28.9%) of genes in pham
- Manual Annotations of this start: 10 of 36
- Called 90.9% of time when present
- Phage (with cluster) where this start called: DekHockey33_76 (A15), Epsocamisio_71 (A15), JSwag_74 (A15), KatherineG_75 (A15), MinecraftSteve_75 (A15), Nebulosus_72 (A15), Rosalind_73 (A15), ShayRa_75 (A15), Soups_75 (A15), Switzerland_74 (A15),

Start 13:

- Found in 10 of 38 (26.3%) of genes in pham
- Manual Annotations of this start: 1 of 36
- Called 10.0% of time when present
- Phage (with cluster) where this start called: DekHockey33_48 (A15),

Start 14:

- Found in 5 of 38 (13.2%) of genes in pham
- Manual Annotations of this start: 5 of 36
- Called 100.0% of time when present
- Phage (with cluster) where this start called: EagleEye_71 (A16), JewelBug_68 (A6), Lucyedi_70 (A16), PainterBoy_69 (A16), SuperAwesome_68 (A6),

Start 15:

- Found in 22 of 38 (57.9%) of genes in pham
- Manual Annotations of this start: 19 of 36
- Called 95.5% of time when present
- Phage (with cluster) where this start called: Anaysia_48 (A15), Anon_43 (A15), Battleship_49 (A15), Boohoo_48 (A15), Epsocamisio_47 (A15), JSwag_47 (A15), KatherineG_49 (A15), LastResort_47 (A15), Looper_48 (A15), MinecraftSteve_49 (A15), Nebulosus_47 (A15), Oofda_49 (A15), ReMo_47 (A15), Remus_48 (A15), Rosalind_47 (A15), ShayRa_49 (A15), Soups_48 (A15), Strosahl_48 (A15), Switzerland_48 (A15), Waits_48 (A15), Warrior24_50 (A15),

Summary by clusters:

There are 3 clusters represented in this pham: A15, A16, A6,

Info for manual annotations of cluster A15:

- Start number 10 was manually annotated 1 time for cluster A15.
- Start number 11 was manually annotated 10 times for cluster A15.

- Start number 13 was manually annotated 1 time for cluster A15.
- Start number 15 was manually annotated 19 times for cluster A15.

Info for manual annotations of cluster A16:

- Start number 14 was manually annotated 3 times for cluster A16.

Info for manual annotations of cluster A6:

- Start number 14 was manually annotated 2 times for cluster A6.

Gene Information:

Gene: Anaysia_48 Start: 30327, Stop: 29968, Start Num: 15

Candidate Starts for Anaysia_48:

(Start: 13 @30330 has 1 MA's), (Start: 15 @30327 has 19 MA's), (21, 30219), (33, 30003),

Gene: Anon_43 Start: 29368, Stop: 29009, Start Num: 15

Candidate Starts for Anon_43:

(Start: 15 @29368 has 19 MA's), (23, 29230),

Gene: Battleship_49 Start: 30296, Stop: 29937, Start Num: 15

Candidate Starts for Battleship_49:

(2, 30701), (3, 30617), (4, 30614), (Start: 15 @30296 has 19 MA's), (21, 30188), (33, 29972),

Gene: Battleship_77 Start: 41490, Stop: 41044, Start Num: 10

Candidate Starts for Battleship_77:

(Start: 10 @41490 has 1 MA's), (Start: 11 @41460 has 10 MA's), (12, 41448), (17, 41358), (19, 41331), (27, 41175), (32, 41094),

Gene: Boohoo_48 Start: 30327, Stop: 29968, Start Num: 15

Candidate Starts for Boohoo_48:

(Start: 13 @30330 has 1 MA's), (Start: 15 @30327 has 19 MA's), (21, 30219), (33, 30003),

Gene: DekHockey33_48 Start: 30545, Stop: 30183, Start Num: 13

Candidate Starts for DekHockey33_48:

(Start: 13 @30545 has 1 MA's), (Start: 15 @30542 has 19 MA's), (21, 30434), (33, 30218),

Gene: DekHockey33_76 Start: 41545, Stop: 41129, Start Num: 11

Candidate Starts for DekHockey33_76:

(Start: 10 @41575 has 1 MA's), (Start: 11 @41545 has 10 MA's), (12, 41533), (17, 41443), (19, 41416), (27, 41260), (32, 41179),

Gene: EagleEye_71 Start: 41731, Stop: 41372, Start Num: 14

Candidate Starts for EagleEye_71:

(6, 41836), (7, 41833), (8, 41830), (Start: 14 @41731 has 5 MA's), (16, 41689), (18, 41656), (25, 41506), (28, 41461), (29, 41458), (34, 41383),

Gene: Epsocamisio_47 Start: 30101, Stop: 29742, Start Num: 15

Candidate Starts for Epsocamisio_47:

(2, 30503), (3, 30419), (Start: 15 @30101 has 19 MA's), (21, 29993), (33, 29777),

Gene: Epsocamisio_71 Start: 40692, Stop: 40276, Start Num: 11

Candidate Starts for Epsocamisio_71:

(Start: 10 @40722 has 1 MA's), (Start: 11 @40692 has 10 MA's), (12, 40680), (17, 40590), (19, 40563), (27, 40407), (32, 40326),

Gene: JSwag_74 Start: 40977, Stop: 40561, Start Num: 11

Candidate Starts for JSwag_74:

(Start: 10 @41007 has 1 MA's), (Start: 11 @40977 has 10 MA's), (12, 40965), (17, 40875), (19, 40848), (27, 40692), (32, 40611),

Gene: JSwag_47 Start: 30039, Stop: 29680, Start Num: 15

Candidate Starts for JSwag_47:

(2, 30441), (3, 30357), (Start: 15 @30039 has 19 MA's), (21, 29931), (33, 29715),

Gene: JewelBug_68 Start: 40312, Stop: 39956, Start Num: 14

Candidate Starts for JewelBug_68:

(9, 40390), (Start: 14 @40312 has 5 MA's), (22, 40168), (24, 40111), (29, 40042), (30, 40036), (31, 40015), (33, 39988), (34, 39967),

Gene: KatherineG_49 Start: 30542, Stop: 30183, Start Num: 15

Candidate Starts for KatherineG_49:

(Start: 13 @30545 has 1 MA's), (Start: 15 @30542 has 19 MA's), (21, 30434), (33, 30218),

Gene: KatherineG_75 Start: 41450, Stop: 41034, Start Num: 11

Candidate Starts for KatherineG_75:

(5, 41561), (Start: 10 @41480 has 1 MA's), (Start: 11 @41450 has 10 MA's), (12, 41438), (17, 41348), (19, 41321), (27, 41165), (32, 41084),

Gene: LastResort_47 Start: 30103, Stop: 29744, Start Num: 15

Candidate Starts for LastResort_47:

(Start: 13 @30106 has 1 MA's), (Start: 15 @30103 has 19 MA's), (21, 29995), (33, 29779),

Gene: Looper_48 Start: 30080, Stop: 29721, Start Num: 15

Candidate Starts for Looper_48:

(Start: 13 @30083 has 1 MA's), (Start: 15 @30080 has 19 MA's), (21, 29972), (33, 29756),

Gene: Lucyedi_70 Start: 41927, Stop: 41568, Start Num: 14

Candidate Starts for Lucyedi_70:

(6, 42032), (7, 42029), (8, 42026), (Start: 14 @41927 has 5 MA's), (16, 41885), (18, 41852), (25, 41702), (28, 41657), (29, 41654), (34, 41579),

Gene: MinecraftSteve_49 Start: 30303, Stop: 29944, Start Num: 15

Candidate Starts for MinecraftSteve_49:

(2, 30705), (3, 30621), (Start: 15 @30303 has 19 MA's), (21, 30195), (26, 30078), (33, 29979),

Gene: MinecraftSteve_75 Start: 41265, Stop: 40849, Start Num: 11

Candidate Starts for MinecraftSteve_75:

(Start: 10 @41295 has 1 MA's), (Start: 11 @41265 has 10 MA's), (12, 41253), (17, 41163), (19, 41136), (27, 40980), (32, 40899),

Gene: Nebulosus_72 Start: 40929, Stop: 40513, Start Num: 11

Candidate Starts for Nebulosus_72:

(Start: 10 @40959 has 1 MA's), (Start: 11 @40929 has 10 MA's), (12, 40917), (17, 40827), (19, 40800), (27, 40644), (32, 40563),

Gene: Nebulosus_47 Start: 30099, Stop: 29740, Start Num: 15

Candidate Starts for Nebulosus_47:

(Start: 13 @30102 has 1 MA's), (Start: 15 @30099 has 19 MA's), (21, 29991), (33, 29775),

Gene: Oofda_49 Start: 30194, Stop: 29835, Start Num: 15

Candidate Starts for Oofda_49:

(2, 30596), (3, 30512), (Start: 15 @30194 has 19 MA's), (21, 30086), (33, 29870),

Gene: PainterBoy_69 Start: 41636, Stop: 41277, Start Num: 14

Candidate Starts for PainterBoy_69:

(6, 41741), (7, 41738), (8, 41735), (Start: 14 @41636 has 5 MA's), (16, 41594), (18, 41561), (25, 41411), (28, 41366), (29, 41363), (34, 41288),

Gene: ReMo_47 Start: 30100, Stop: 29741, Start Num: 15

Candidate Starts for ReMo_47:

(Start: 13 @30103 has 1 MA's), (Start: 15 @30100 has 19 MA's), (21, 29992), (33, 29776),

Gene: Remus_48 Start: 30019, Stop: 29660, Start Num: 15

Candidate Starts for Remus_48:

(1, 30424), (2, 30421), (3, 30337), (Start: 15 @30019 has 19 MA's), (21, 29911), (33, 29695),

Gene: Rosalind_47 Start: 30222, Stop: 29863, Start Num: 15

Candidate Starts for Rosalind_47:

(2, 30624), (3, 30540), (Start: 15 @30222 has 19 MA's), (21, 30114), (33, 29898),

Gene: Rosalind_73 Start: 41184, Stop: 40768, Start Num: 11

Candidate Starts for Rosalind_73:

(Start: 10 @41214 has 1 MA's), (Start: 11 @41184 has 10 MA's), (12, 41172), (17, 41082), (19, 41055), (27, 40899), (32, 40818),

Gene: ShayRa_49 Start: 30304, Stop: 29945, Start Num: 15

Candidate Starts for ShayRa_49:

(Start: 13 @30307 has 1 MA's), (Start: 15 @30304 has 19 MA's), (21, 30196), (33, 29980),

Gene: ShayRa_75 Start: 41213, Stop: 40797, Start Num: 11

Candidate Starts for ShayRa_75:

(Start: 10 @41243 has 1 MA's), (Start: 11 @41213 has 10 MA's), (12, 41201), (17, 41111), (19, 41084), (27, 40928), (32, 40847),

Gene: Soups_48 Start: 30303, Stop: 29944, Start Num: 15

Candidate Starts for Soups_48:

(Start: 13 @30306 has 1 MA's), (Start: 15 @30303 has 19 MA's), (21, 30195), (33, 29979),

Gene: Soups_75 Start: 41477, Stop: 41061, Start Num: 11

Candidate Starts for Soups_75:

(Start: 10 @41507 has 1 MA's), (Start: 11 @41477 has 10 MA's), (12, 41465), (17, 41375), (19, 41348), (27, 41192), (32, 41111),

Gene: Strosahl_48 Start: 30019, Stop: 29660, Start Num: 15

Candidate Starts for Strosahl_48:

(1, 30424), (2, 30421), (3, 30337), (Start: 15 @30019 has 19 MA's), (21, 29911), (33, 29695),

Gene: SuperAwesome_68 Start: 40045, Stop: 39689, Start Num: 14

Candidate Starts for SuperAwesome_68:

(9, 40123), (Start: 14 @40045 has 5 MA's), (22, 39901), (24, 39844), (29, 39775), (31, 39748), (33, 39721), (34, 39700),

Gene: Switzerland_48 Start: 30402, Stop: 30043, Start Num: 15

Candidate Starts for Switzerland_48:

(2, 30804), (3, 30720), (Start: 15 @30402 has 19 MA's), (21, 30294), (33, 30078),

Gene: Switzerland_74 Start: 41352, Stop: 40936, Start Num: 11

Candidate Starts for Switzerland_74:

(Start: 10 @41382 has 1 MA's), (Start: 11 @41352 has 10 MA's), (12, 41340), (17, 41250), (19, 41223), (27, 41067), (32, 40986),

Gene: Waits_48 Start: 30191, Stop: 29832, Start Num: 15

Candidate Starts for Waits_48:

(2, 30593), (3, 30509), (Start: 15 @30191 has 19 MA's), (21, 30083), (33, 29867),

Gene: Warrior24_50 Start: 30398, Stop: 30039, Start Num: 15

Candidate Starts for Warrior24_50:

(2, 30803), (3, 30719), (4, 30716), (Start: 15 @30398 has 19 MA's), (19, 30308), (20, 30299), (23, 30260), (33, 30074),