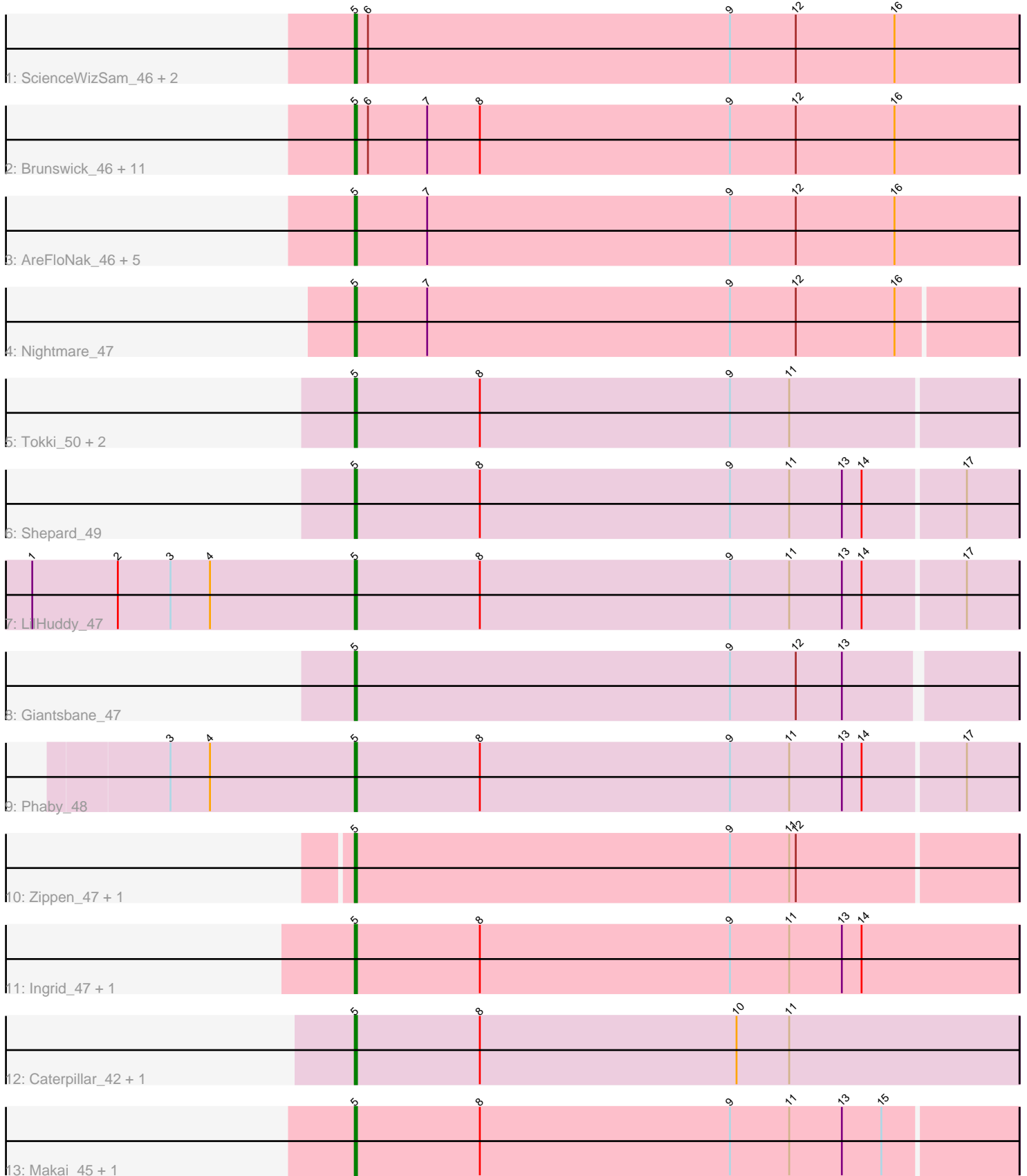


Pham 203131



Note: Tracks are now grouped by subcluster and scaled. Switching in subcluster is indicated by changes in track color. Track scale is now set by default to display the region 30 bp upstream of start 1 to 30 bp downstream of the last possible start. If this default region is judged to be packed too tightly with annotated starts, the track will be further scaled to only show that region of the ORF with annotated starts. This action will be indicated by adding "Zoomed" to the title. For starts, yellow indicates the location of called starts comprised solely of Glimmer/GeneMark auto-annotations, green indicates the location of called starts with at least 1 manual gene annotation.

## Pham 203131 Report

This analysis was run 01/18/25 on database version 583.

Pham number 203131 has 37 members, 8 are drafts.

Phages represented in each track:

- Track 1 : ScienceWizSam\_46, DevitoJr\_44, Trustiboi\_45
- Track 2 : Brunswick\_46, Tatanka\_44, ElephantMan\_45, Tenno\_46, Teacup\_46, LucySwiss\_47, Acai\_47, Issa\_47, Synopsis\_44, Niktson\_45, CapnMurica\_43, MiniBagel\_45
- Track 3 : AreFloNak\_46, Gordon\_43, Breylor17\_46, Darby\_44, CastorTray\_48, Nivinsha\_46
- Track 4 : Nightmare\_47
- Track 5 : Tokki\_50, Chlochlo\_45, Bouchard\_46
- Track 6 : Shepard\_49
- Track 7 : LilHuddy\_47
- Track 8 : Giantsbane\_47
- Track 9 : Phaby\_48
- Track 10 : Zippen\_47, Inked\_49
- Track 11 : Ingrid\_47, Loretta\_47
- Track 12 : Caterpillar\_42, MediumFry\_43
- Track 13 : Makai\_45, Truckee\_43

### ***Summary of Final Annotations (See graph section above for start numbers):***

The start number called the most often in the published annotations is 5, it was called in 29 of the 29 non-draft genes in the pham.

Genes that call this "Most Annotated" start:

- Acai\_47, AreFloNak\_46, Bouchard\_46, Breylor17\_46, Brunswick\_46, CapnMurica\_43, CastorTray\_48, Caterpillar\_42, Chlochlo\_45, Darby\_44, DevitoJr\_44, ElephantMan\_45, Giantsbane\_47, Gordon\_43, Ingrid\_47, Inked\_49, Issa\_47, LilHuddy\_47, Loretta\_47, LucySwiss\_47, Makai\_45, MediumFry\_43, MiniBagel\_45, Nightmare\_47, Niktson\_45, Nivinsha\_46, Phaby\_48, ScienceWizSam\_46, Shepard\_49, Synopsis\_44, Tatanka\_44, Teacup\_46, Tenno\_46, Tokki\_50, Truckee\_43, Trustiboi\_45, Zippen\_47,

Genes that have the "Most Annotated" start but do not call it:

-

Genes that do not have the "Most Annotated" start:

- 

### Summary by start number:

Start 5:

- Found in 37 of 37 ( 100.0% ) of genes in pham
- Manual Annotations of this start: 29 of 29
- Called 100.0% of time when present
- Phage (with cluster) where this start called: Acai\_47 (AU1), AreFloNak\_46 (AU1), Bouchard\_46 (AU2), Breylor17\_46 (AU1), Brunswick\_46 (AU1), CapnMurica\_43 (AU1), CastorTray\_48 (AU1), Caterpillar\_42 (AU4), Chlochlo\_45 (AU2), Darby\_44 (AU1), DevitoJr\_44 (AU1), ElephantMan\_45 (AU1), Giantsbane\_47 (AU2), Gordon\_43 (AU1), Ingrid\_47 (AU3), Inked\_49 (AU), Issa\_47 (AU1), LilHuddy\_47 (AU2), Loretta\_47 (AU3), LucySwiss\_47 (AU1), Makai\_45 (AU5), MediumFry\_43 (AU4), MiniBagel\_45 (AU1), Nightmare\_47 (AU1), Niktson\_45 (AU1), Nivinsha\_46 (AU1), Phaby\_48 (AU2), ScienceWizSam\_46 (AU1), Shepard\_49 (AU2), Synopsis\_44 (AU1), Tatanka\_44 (AU1), Teacup\_46 (AU1), Tenno\_46 (AU1), Tokki\_50 (AU2), Truckee\_43 (AU5), Trustiboi\_45 (AU1), Zippen\_47 (AU3),

### Summary by clusters:

There are 6 clusters represented in this pham: AU1, AU3, AU2, AU5, AU4, AU,

Info for manual annotations of cluster AU:

- Start number 5 was manually annotated 1 time for cluster AU.

Info for manual annotations of cluster AU1:

- Start number 5 was manually annotated 17 times for cluster AU1.

Info for manual annotations of cluster AU2:

- Start number 5 was manually annotated 5 times for cluster AU2.

Info for manual annotations of cluster AU3:

- Start number 5 was manually annotated 2 times for cluster AU3.

Info for manual annotations of cluster AU4:

- Start number 5 was manually annotated 2 times for cluster AU4.

Info for manual annotations of cluster AU5:

- Start number 5 was manually annotated 2 times for cluster AU5.

### Gene Information:

Gene: Acai\_47 Start: 34277, Stop: 34579, Start Num: 5

Candidate Starts for Acai\_47:

(Start: 5 @34277 has 29 MA's), (6, 34283), (7, 34310), (8, 34334), (9, 34448), (12, 34478), (16, 34523),

Gene: AreFloNak\_46 Start: 34044, Stop: 34346, Start Num: 5

Candidate Starts for AreFloNak\_46:

(Start: 5 @34044 has 29 MA's), (7, 34077), (9, 34215), (12, 34245), (16, 34290),

Gene: Bouchard\_46 Start: 34278, Stop: 34577, Start Num: 5  
Candidate Starts for Bouchard\_46:  
(Start: 5 @34278 has 29 MA's), (8, 34335), (9, 34449), (11, 34476),

Gene: Breylor17\_46 Start: 34842, Stop: 35144, Start Num: 5  
Candidate Starts for Breylor17\_46:  
(Start: 5 @34842 has 29 MA's), (7, 34875), (9, 35013), (12, 35043), (16, 35088),

Gene: Brunswick\_46 Start: 33924, Stop: 34226, Start Num: 5  
Candidate Starts for Brunswick\_46:  
(Start: 5 @33924 has 29 MA's), (6, 33930), (7, 33957), (8, 33981), (9, 34095), (12, 34125), (16, 34170),

Gene: CapnMurica\_43 Start: 34822, Stop: 35124, Start Num: 5  
Candidate Starts for CapnMurica\_43:  
(Start: 5 @34822 has 29 MA's), (6, 34828), (7, 34855), (8, 34879), (9, 34993), (12, 35023), (16, 35068),

Gene: CastorTray\_48 Start: 34652, Stop: 34954, Start Num: 5  
Candidate Starts for CastorTray\_48:  
(Start: 5 @34652 has 29 MA's), (7, 34685), (9, 34823), (12, 34853), (16, 34898),

Gene: Caterpillar\_42 Start: 33123, Stop: 33425, Start Num: 5  
Candidate Starts for Caterpillar\_42:  
(Start: 5 @33123 has 29 MA's), (8, 33180), (10, 33297), (11, 33321),

Gene: Chlochlo\_45 Start: 34022, Stop: 34321, Start Num: 5  
Candidate Starts for Chlochlo\_45:  
(Start: 5 @34022 has 29 MA's), (8, 34079), (9, 34193), (11, 34220),

Gene: Darby\_44 Start: 33824, Stop: 34126, Start Num: 5  
Candidate Starts for Darby\_44:  
(Start: 5 @33824 has 29 MA's), (7, 33857), (9, 33995), (12, 34025), (16, 34070),

Gene: DevitoJr\_44 Start: 34012, Stop: 34314, Start Num: 5  
Candidate Starts for DevitoJr\_44:  
(Start: 5 @34012 has 29 MA's), (6, 34018), (9, 34183), (12, 34213), (16, 34258),

Gene: ElephantMan\_45 Start: 34497, Stop: 34799, Start Num: 5  
Candidate Starts for ElephantMan\_45:  
(Start: 5 @34497 has 29 MA's), (6, 34503), (7, 34530), (8, 34554), (9, 34668), (12, 34698), (16, 34743),

Gene: Giantsbane\_47 Start: 33208, Stop: 33504, Start Num: 5  
Candidate Starts for Giantsbane\_47:  
(Start: 5 @33208 has 29 MA's), (9, 33379), (12, 33409), (13, 33430),

Gene: Gordon\_43 Start: 34647, Stop: 34946, Start Num: 5  
Candidate Starts for Gordon\_43:  
(Start: 5 @34647 has 29 MA's), (7, 34680), (9, 34818), (12, 34848), (16, 34893),

Gene: Ingrid\_47 Start: 33951, Stop: 34253, Start Num: 5  
Candidate Starts for Ingrid\_47:  
(Start: 5 @33951 has 29 MA's), (8, 34008), (9, 34122), (11, 34149), (13, 34173), (14, 34182),

Gene: Inked\_49 Start: 35083, Stop: 35382, Start Num: 5  
Candidate Starts for Inked\_49:  
(Start: 5 @35083 has 29 MA's), (9, 35254), (11, 35281), (12, 35284),

Gene: Issa\_47 Start: 34116, Stop: 34418, Start Num: 5  
Candidate Starts for Issa\_47:  
(Start: 5 @34116 has 29 MA's), (6, 34122), (7, 34149), (8, 34173), (9, 34287), (12, 34317), (16, 34362),

Gene: LilHuddy\_47 Start: 34159, Stop: 34458, Start Num: 5  
Candidate Starts for LilHuddy\_47:  
(1, 34012), (2, 34051), (3, 34075), (4, 34093), (Start: 5 @34159 has 29 MA's), (8, 34216), (9, 34330),  
(11, 34357), (13, 34381), (14, 34390), (17, 34435),

Gene: Loretta\_47 Start: 33951, Stop: 34253, Start Num: 5  
Candidate Starts for Loretta\_47:  
(Start: 5 @33951 has 29 MA's), (8, 34008), (9, 34122), (11, 34149), (13, 34173), (14, 34182),

Gene: LucySwiss\_47 Start: 33918, Stop: 34220, Start Num: 5  
Candidate Starts for LucySwiss\_47:  
(Start: 5 @33918 has 29 MA's), (6, 33924), (7, 33951), (8, 33975), (9, 34089), (12, 34119), (16, 34164),

Gene: Makai\_45 Start: 34138, Stop: 34437, Start Num: 5  
Candidate Starts for Makai\_45:  
(Start: 5 @34138 has 29 MA's), (8, 34195), (9, 34309), (11, 34336), (13, 34360), (15, 34378),

Gene: MediumFry\_43 Start: 33426, Stop: 33728, Start Num: 5  
Candidate Starts for MediumFry\_43:  
(Start: 5 @33426 has 29 MA's), (8, 33483), (10, 33600), (11, 33624),

Gene: MiniBagel\_45 Start: 34804, Stop: 35106, Start Num: 5  
Candidate Starts for MiniBagel\_45:  
(Start: 5 @34804 has 29 MA's), (6, 34810), (7, 34837), (8, 34861), (9, 34975), (12, 35005), (16, 35050),

Gene: Nightmare\_47 Start: 35063, Stop: 35362, Start Num: 5  
Candidate Starts for Nightmare\_47:  
(Start: 5 @35063 has 29 MA's), (7, 35096), (9, 35234), (12, 35264), (16, 35309),

Gene: Niktson\_45 Start: 34497, Stop: 34799, Start Num: 5  
Candidate Starts for Niktson\_45:  
(Start: 5 @34497 has 29 MA's), (6, 34503), (7, 34530), (8, 34554), (9, 34668), (12, 34698), (16, 34743),

Gene: Nivinsha\_46 Start: 34044, Stop: 34346, Start Num: 5  
Candidate Starts for Nivinsha\_46:  
(Start: 5 @34044 has 29 MA's), (7, 34077), (9, 34215), (12, 34245), (16, 34290),

Gene: Phaby\_48 Start: 34705, Stop: 35004, Start Num: 5  
Candidate Starts for Phaby\_48:  
(3, 34621), (4, 34639), (Start: 5 @34705 has 29 MA's), (8, 34762), (9, 34876), (11, 34903), (13, 34927),  
(14, 34936), (17, 34981),

Gene: ScienceWizSam\_46 Start: 34154, Stop: 34456, Start Num: 5  
Candidate Starts for ScienceWizSam\_46:  
(Start: 5 @34154 has 29 MA's), (6, 34160), (9, 34325), (12, 34355), (16, 34400),

Gene: Shepard\_49 Start: 34232, Stop: 34531, Start Num: 5

Candidate Starts for Shepard\_49:

(Start: 5 @34232 has 29 MA's), (8, 34289), (9, 34403), (11, 34430), (13, 34454), (14, 34463), (17, 34508),

Gene: Synopsis\_44 Start: 34166, Stop: 34468, Start Num: 5

Candidate Starts for Synopsis\_44:

(Start: 5 @34166 has 29 MA's), (6, 34172), (7, 34199), (8, 34223), (9, 34337), (12, 34367), (16, 34412),

Gene: Tatanka\_44 Start: 34336, Stop: 34638, Start Num: 5

Candidate Starts for Tatanka\_44:

(Start: 5 @34336 has 29 MA's), (6, 34342), (7, 34369), (8, 34393), (9, 34507), (12, 34537), (16, 34582),

Gene: Teacup\_46 Start: 34526, Stop: 34828, Start Num: 5

Candidate Starts for Teacup\_46:

(Start: 5 @34526 has 29 MA's), (6, 34532), (7, 34559), (8, 34583), (9, 34697), (12, 34727), (16, 34772),

Gene: Tenno\_46 Start: 34812, Stop: 35114, Start Num: 5

Candidate Starts for Tenno\_46:

(Start: 5 @34812 has 29 MA's), (6, 34818), (7, 34845), (8, 34869), (9, 34983), (12, 35013), (16, 35058),

Gene: Tokki\_50 Start: 34333, Stop: 34632, Start Num: 5

Candidate Starts for Tokki\_50:

(Start: 5 @34333 has 29 MA's), (8, 34390), (9, 34504), (11, 34531),

Gene: Truckee\_43 Start: 33926, Stop: 34225, Start Num: 5

Candidate Starts for Truckee\_43:

(Start: 5 @33926 has 29 MA's), (8, 33983), (9, 34097), (11, 34124), (13, 34148), (15, 34166),

Gene: Trustiboi\_45 Start: 34372, Stop: 34674, Start Num: 5

Candidate Starts for Trustiboi\_45:

(Start: 5 @34372 has 29 MA's), (6, 34378), (9, 34543), (12, 34573), (16, 34618),

Gene: Zippen\_47 Start: 34782, Stop: 35081, Start Num: 5

Candidate Starts for Zippen\_47:

(Start: 5 @34782 has 29 MA's), (9, 34953), (11, 34980), (12, 34983),