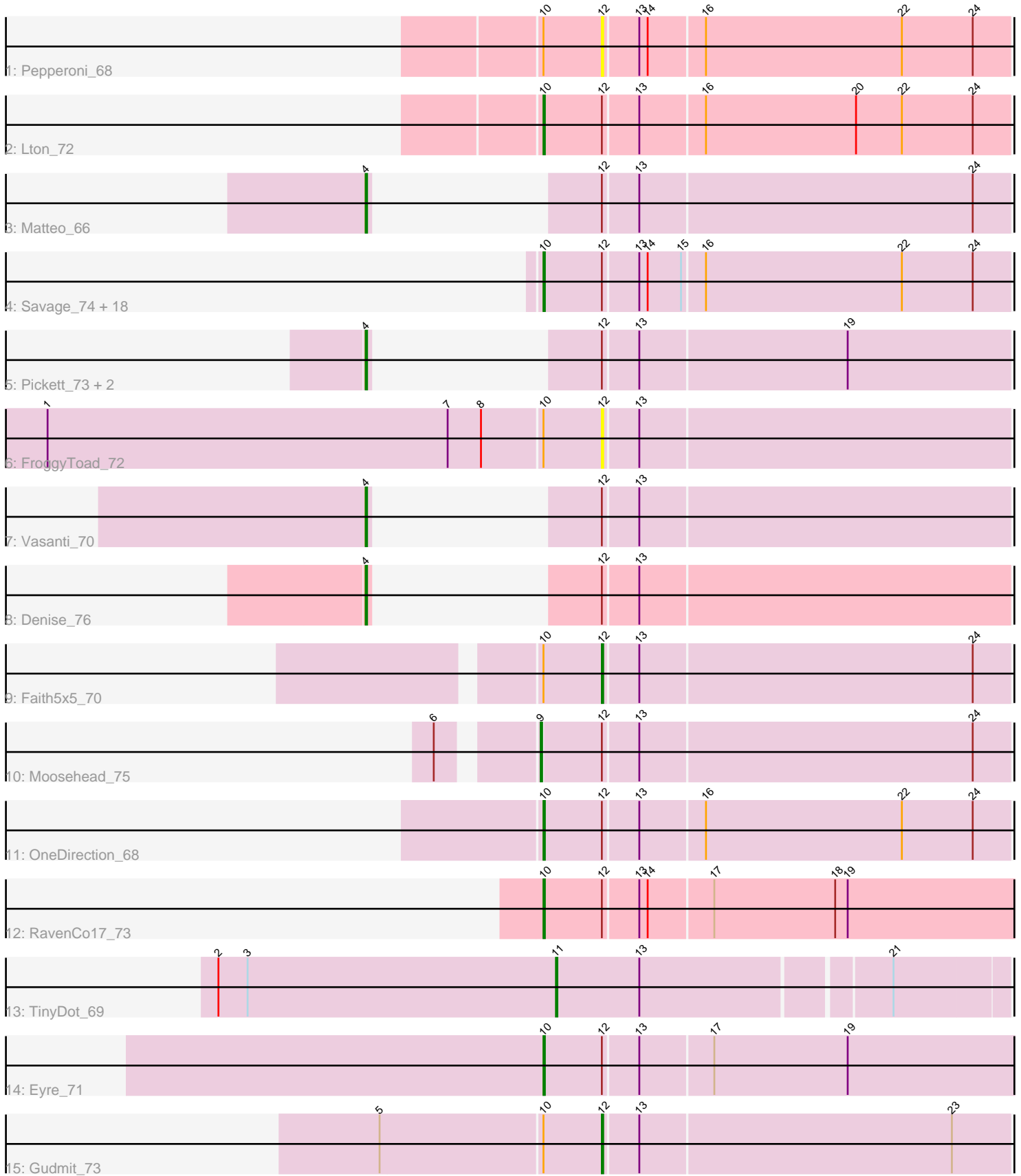


Pham 203142



Note: Tracks are now grouped by subcluster and scaled. Switching in subcluster is indicated by changes in track color. Track scale is now set by default to display the region 30 bp upstream of start 1 to 30 bp downstream of the last possible start. If this default region is judged to be packed too tightly with annotated starts, the track will be further scaled to only show that region of the ORF with annotated starts. This action will be indicated by adding "Zoomed" to the title. For starts, yellow indicates the location of called starts comprised solely of Glimmer/GeneMark auto-annotations, green indicates the location of called starts with at least 1 manual gene annotation.

Pham 203142 Report

This analysis was run 01/18/25 on database version 583.

Pham number 203142 has 35 members, 3 are drafts.

Phages represented in each track:

- Track 1 : Pepperoni_68
- Track 2 : Lton_72
- Track 3 : Matteo_66
- Track 4 : Savage_74, Whiteclaw_74, Cynthia_74, SoilAssassin_73, Haley23_74, Lamberg_70, Nettuno_70, GemG_74, TuertoX_74, Ebert_77, Gizermo_74, Clap_74, Yeet412_72, Attis_73, Bjanes7_71, Sahara_71, Sproutie_74, Mocha12_74, LordFarquaad_75
- Track 5 : Pickett_73, JCole_72, EdnaMode_74
- Track 6 : FroggyToad_72
- Track 7 : Vasanti_70
- Track 8 : Denise_76
- Track 9 : Faith5x5_70
- Track 10 : Moosehead_75
- Track 11 : OneDirection_68
- Track 12 : RavenCo17_73
- Track 13 : TinyDot_69
- Track 14 : Eyre_71
- Track 15 : Gudmit_73

Summary of Final Annotations (See graph section above for start numbers):

The start number called the most often in the published annotations is 10, it was called in 23 of the 32 non-draft genes in the pham.

Genes that call this "Most Annotated" start:

- Attis_73, Bjanes7_71, Clap_74, Cynthia_74, Ebert_77, Eyre_71, GemG_74, Gizermo_74, Haley23_74, Lamberg_70, LordFarquaad_75, Lton_72, Mocha12_74, Nettuno_70, OneDirection_68, RavenCo17_73, Sahara_71, Savage_74, SoilAssassin_73, Sproutie_74, TuertoX_74, Whiteclaw_74, Yeet412_72,

Genes that have the "Most Annotated" start but do not call it:

- Faith5x5_70, FroggyToad_72, Gudmit_73, Pepperoni_68,

Genes that do not have the "Most Annotated" start:

- Denise_76, EdnaMode_74, JCole_72, Matteo_66, Moosehead_75, Pickett_73, TinyDot_69, Vasanti_70,

Summary by start number:

Start 4:

- Found in 6 of 35 (17.1%) of genes in pham
- Manual Annotations of this start: 5 of 32
- Called 100.0% of time when present
- Phage (with cluster) where this start called: Denise_76 (CZ5), EdnaMode_74 (CZ2), JCole_72 (CZ2), Matteo_66 (CZ2), Pickett_73 (CZ2), Vasanti_70 (CZ2),

Start 9:

- Found in 1 of 35 (2.9%) of genes in pham
- Manual Annotations of this start: 1 of 32
- Called 100.0% of time when present
- Phage (with cluster) where this start called: Moosehead_75 (CZ6),

Start 10:

- Found in 27 of 35 (77.1%) of genes in pham
- Manual Annotations of this start: 23 of 32
- Called 85.2% of time when present
- Phage (with cluster) where this start called: Attis_73 (CZ2), Bjanes7_71 (CZ2), Clap_74 (CZ2), Cynthia_74 (CZ2), Ebert_77 (CZ2), Eyre_71 (singleton), GemG_74 (CZ2), Gizermo_74 (CZ2), Haley23_74 (CZ2), Lamberg_70 (CZ2), LordFarquaad_75 (CZ2), Lton_72 (CZ), Mocha12_74 (CZ2), Nettuno_70 (CZ2), OneDirection_68 (CZ6), RavenCo17_73 (CZ8), Sahara_71 (CZ2), Savage_74 (CZ2), SoilAssassin_73 (CZ2), Sproutie_74 (CZ2), TuertoX_74 (CZ2), Whiteclaw_74 (CZ2), Yeet412_72 (CZ2),

Start 11:

- Found in 1 of 35 (2.9%) of genes in pham
- Manual Annotations of this start: 1 of 32
- Called 100.0% of time when present
- Phage (with cluster) where this start called: TinyDot_69 (singleton),

Start 12:

- Found in 34 of 35 (97.1%) of genes in pham
- Manual Annotations of this start: 2 of 32
- Called 11.8% of time when present
- Phage (with cluster) where this start called: Faith5x5_70 (CZ6), FroggyToad_72 (CZ2), Gudmit_73 (singleton), Pepperoni_68 (CZ),

Summary by clusters:

There are 6 clusters represented in this pham: CZ8, CZ2, CZ6, singleton, CZ5, CZ,

Info for manual annotations of cluster CZ:

- Start number 10 was manually annotated 1 time for cluster CZ.

Info for manual annotations of cluster CZ2:

- Start number 4 was manually annotated 4 times for cluster CZ2.
- Start number 10 was manually annotated 19 times for cluster CZ2.

Info for manual annotations of cluster CZ5:

- Start number 4 was manually annotated 1 time for cluster CZ5.

Info for manual annotations of cluster CZ6:

- Start number 9 was manually annotated 1 time for cluster CZ6.
- Start number 10 was manually annotated 1 time for cluster CZ6.
- Start number 12 was manually annotated 1 time for cluster CZ6.

Info for manual annotations of cluster CZ8:

- Start number 10 was manually annotated 1 time for cluster CZ8.

Gene Information:

Gene: Attis_73 Start: 47175, Stop: 47504, Start Num: 10

Candidate Starts for Attis_73:

(Start: 10 @47175 has 23 MA's), (Start: 12 @47217 has 2 MA's), (13, 47241), (14, 47247), (15, 47271), (16, 47286), (22, 47427), (24, 47478),

Gene: Bjanes7_71 Start: 45336, Stop: 45665, Start Num: 10

Candidate Starts for Bjanes7_71:

(Start: 10 @45336 has 23 MA's), (Start: 12 @45378 has 2 MA's), (13, 45402), (14, 45408), (15, 45432), (16, 45447), (22, 45588), (24, 45639),

Gene: Clap_74 Start: 45515, Stop: 45844, Start Num: 10

Candidate Starts for Clap_74:

(Start: 10 @45515 has 23 MA's), (Start: 12 @45557 has 2 MA's), (13, 45581), (14, 45587), (15, 45611), (16, 45626), (22, 45767), (24, 45818),

Gene: Cynthia_74 Start: 45513, Stop: 45842, Start Num: 10

Candidate Starts for Cynthia_74:

(Start: 10 @45513 has 23 MA's), (Start: 12 @45555 has 2 MA's), (13, 45579), (14, 45585), (15, 45609), (16, 45624), (22, 45765), (24, 45816),

Gene: Denise_76 Start: 43912, Stop: 44241, Start Num: 4

Candidate Starts for Denise_76:

(Start: 4 @43912 has 5 MA's), (Start: 12 @43954 has 2 MA's), (13, 43978),

Gene: Ebert_77 Start: 45947, Stop: 46276, Start Num: 10

Candidate Starts for Ebert_77:

(Start: 10 @45947 has 23 MA's), (Start: 12 @45989 has 2 MA's), (13, 46013), (14, 46019), (15, 46043), (16, 46058), (22, 46199), (24, 46250),

Gene: EdnaMode_74 Start: 45868, Stop: 46197, Start Num: 4

Candidate Starts for EdnaMode_74:

(Start: 4 @45868 has 5 MA's), (Start: 12 @45910 has 2 MA's), (13, 45934), (19, 46081),

Gene: Eyre_71 Start: 43512, Stop: 43847, Start Num: 10

Candidate Starts for Eyre_71:

(Start: 10 @43512 has 23 MA's), (Start: 12 @43554 has 2 MA's), (13, 43578), (17, 43629), (19, 43725),

Gene: Faith5x5_70 Start: 40885, Stop: 41172, Start Num: 12

Candidate Starts for Faith5x5_70:

(Start: 10 @40843 has 23 MA's), (Start: 12 @40885 has 2 MA's), (13, 40909), (24, 41146),

Gene: FroggyToad_72 Start: 46027, Stop: 46314, Start Num: 12

Candidate Starts for FroggyToad_72:

(1, 45631), (7, 45919), (8, 45943), (Start: 10 @45985 has 23 MA's), (Start: 12 @46027 has 2 MA's), (13, 46051),

Gene: GemG_74 Start: 45519, Stop: 45848, Start Num: 10

Candidate Starts for GemG_74:

(Start: 10 @45519 has 23 MA's), (Start: 12 @45561 has 2 MA's), (13, 45585), (14, 45591), (15, 45615), (16, 45630), (22, 45771), (24, 45822),

Gene: Gizermo_74 Start: 45515, Stop: 45844, Start Num: 10

Candidate Starts for Gizermo_74:

(Start: 10 @45515 has 23 MA's), (Start: 12 @45557 has 2 MA's), (13, 45581), (14, 45587), (15, 45611), (16, 45626), (22, 45767), (24, 45818),

Gene: Gudmit_73 Start: 41550, Stop: 41837, Start Num: 12

Candidate Starts for Gudmit_73:

(5, 41394), (Start: 10 @41508 has 23 MA's), (Start: 12 @41550 has 2 MA's), (13, 41574), (23, 41796),

Gene: Haley23_74 Start: 45515, Stop: 45844, Start Num: 10

Candidate Starts for Haley23_74:

(Start: 10 @45515 has 23 MA's), (Start: 12 @45557 has 2 MA's), (13, 45581), (14, 45587), (15, 45611), (16, 45626), (22, 45767), (24, 45818),

Gene: JCole_72 Start: 44430, Stop: 44759, Start Num: 4

Candidate Starts for JCole_72:

(Start: 4 @44430 has 5 MA's), (Start: 12 @44472 has 2 MA's), (13, 44496), (19, 44643),

Gene: Lamberg_70 Start: 44024, Stop: 44353, Start Num: 10

Candidate Starts for Lamberg_70:

(Start: 10 @44024 has 23 MA's), (Start: 12 @44066 has 2 MA's), (13, 44090), (14, 44096), (15, 44120), (16, 44135), (22, 44276), (24, 44327),

Gene: LordFarquaad_75 Start: 47157, Stop: 47486, Start Num: 10

Candidate Starts for LordFarquaad_75:

(Start: 10 @47157 has 23 MA's), (Start: 12 @47199 has 2 MA's), (13, 47223), (14, 47229), (15, 47253), (16, 47268), (22, 47409), (24, 47460),

Gene: Lton_72 Start: 40999, Stop: 41328, Start Num: 10

Candidate Starts for Lton_72:

(Start: 10 @40999 has 23 MA's), (Start: 12 @41041 has 2 MA's), (13, 41065), (16, 41110), (20, 41218), (22, 41251), (24, 41302),

Gene: Matteo_66 Start: 43086, Stop: 43415, Start Num: 4

Candidate Starts for Matteo_66:

(Start: 4 @43086 has 5 MA's), (Start: 12 @43128 has 2 MA's), (13, 43152), (24, 43389),

Gene: Mocha12_74 Start: 45515, Stop: 45844, Start Num: 10

Candidate Starts for Mocha12_74:

(Start: 10 @45515 has 23 MA's), (Start: 12 @45557 has 2 MA's), (13, 45581), (14, 45587), (15, 45611), (16, 45626), (22, 45767), (24, 45818),

Gene: Moosehead_75 Start: 41533, Stop: 41862, Start Num: 9

Candidate Starts for Moosehead_75:

(6, 41476), (Start: 9 @41533 has 1 MA's), (Start: 12 @41575 has 2 MA's), (13, 41599), (24, 41836),

Gene: Nettuno_70 Start: 43822, Stop: 44151, Start Num: 10

Candidate Starts for Nettuno_70:

(Start: 10 @43822 has 23 MA's), (Start: 12 @43864 has 2 MA's), (13, 43888), (14, 43894), (15, 43918), (16, 43933), (22, 44074), (24, 44125),

Gene: OneDirection_68 Start: 39305, Stop: 39634, Start Num: 10

Candidate Starts for OneDirection_68:

(Start: 10 @39305 has 23 MA's), (Start: 12 @39347 has 2 MA's), (13, 39371), (16, 39416), (22, 39557), (24, 39608),

Gene: Pepperoni_68 Start: 40729, Stop: 41016, Start Num: 12

Candidate Starts for Pepperoni_68:

(Start: 10 @40687 has 23 MA's), (Start: 12 @40729 has 2 MA's), (13, 40753), (14, 40759), (16, 40798), (22, 40939), (24, 40990),

Gene: Pickett_73 Start: 44706, Stop: 45035, Start Num: 4

Candidate Starts for Pickett_73:

(Start: 4 @44706 has 5 MA's), (Start: 12 @44748 has 2 MA's), (13, 44772), (19, 44919),

Gene: RavenCo17_73 Start: 48930, Stop: 49265, Start Num: 10

Candidate Starts for RavenCo17_73:

(Start: 10 @48930 has 23 MA's), (Start: 12 @48972 has 2 MA's), (13, 48996), (14, 49002), (17, 49047), (18, 49134), (19, 49143),

Gene: Sahara_71 Start: 44366, Stop: 44695, Start Num: 10

Candidate Starts for Sahara_71:

(Start: 10 @44366 has 23 MA's), (Start: 12 @44408 has 2 MA's), (13, 44432), (14, 44438), (15, 44462), (16, 44477), (22, 44618), (24, 44669),

Gene: Savage_74 Start: 45515, Stop: 45844, Start Num: 10

Candidate Starts for Savage_74:

(Start: 10 @45515 has 23 MA's), (Start: 12 @45557 has 2 MA's), (13, 45581), (14, 45587), (15, 45611), (16, 45626), (22, 45767), (24, 45818),

Gene: SoilAssassin_73 Start: 47174, Stop: 47503, Start Num: 10

Candidate Starts for SoilAssassin_73:

(Start: 10 @47174 has 23 MA's), (Start: 12 @47216 has 2 MA's), (13, 47240), (14, 47246), (15, 47270), (16, 47285), (22, 47426), (24, 47477),

Gene: Sproutie_74 Start: 45515, Stop: 45844, Start Num: 10

Candidate Starts for Sproutie_74:

(Start: 10 @45515 has 23 MA's), (Start: 12 @45557 has 2 MA's), (13, 45581), (14, 45587), (15, 45611), (16, 45626), (22, 45767), (24, 45818),

Gene: TinyDot_69 Start: 40745, Stop: 41056, Start Num: 11

Candidate Starts for TinyDot_69:

(2, 40502), (3, 40523), (Start: 11 @40745 has 1 MA's), (13, 40805), (21, 40976),

Gene: TuertoX_74 Start: 45515, Stop: 45844, Start Num: 10

Candidate Starts for TuertoX_74:

(Start: 10 @45515 has 23 MA's), (Start: 12 @45557 has 2 MA's), (13, 45581), (14, 45587), (15, 45611), (16, 45626), (22, 45767), (24, 45818),

Gene: Vasanti_70 Start: 45756, Stop: 46085, Start Num: 4

Candidate Starts for Vasanti_70:

(Start: 4 @45756 has 5 MA's), (Start: 12 @45798 has 2 MA's), (13, 45822),

Gene: Whiteclaw_74 Start: 45515, Stop: 45844, Start Num: 10

Candidate Starts for Whiteclaw_74:

(Start: 10 @45515 has 23 MA's), (Start: 12 @45557 has 2 MA's), (13, 45581), (14, 45587), (15, 45611), (16, 45626), (22, 45767), (24, 45818),

Gene: Yeet412_72 Start: 45978, Stop: 46307, Start Num: 10

Candidate Starts for Yeet412_72:

(Start: 10 @45978 has 23 MA's), (Start: 12 @46020 has 2 MA's), (13, 46044), (14, 46050), (15, 46074), (16, 46089), (22, 46230), (24, 46281),