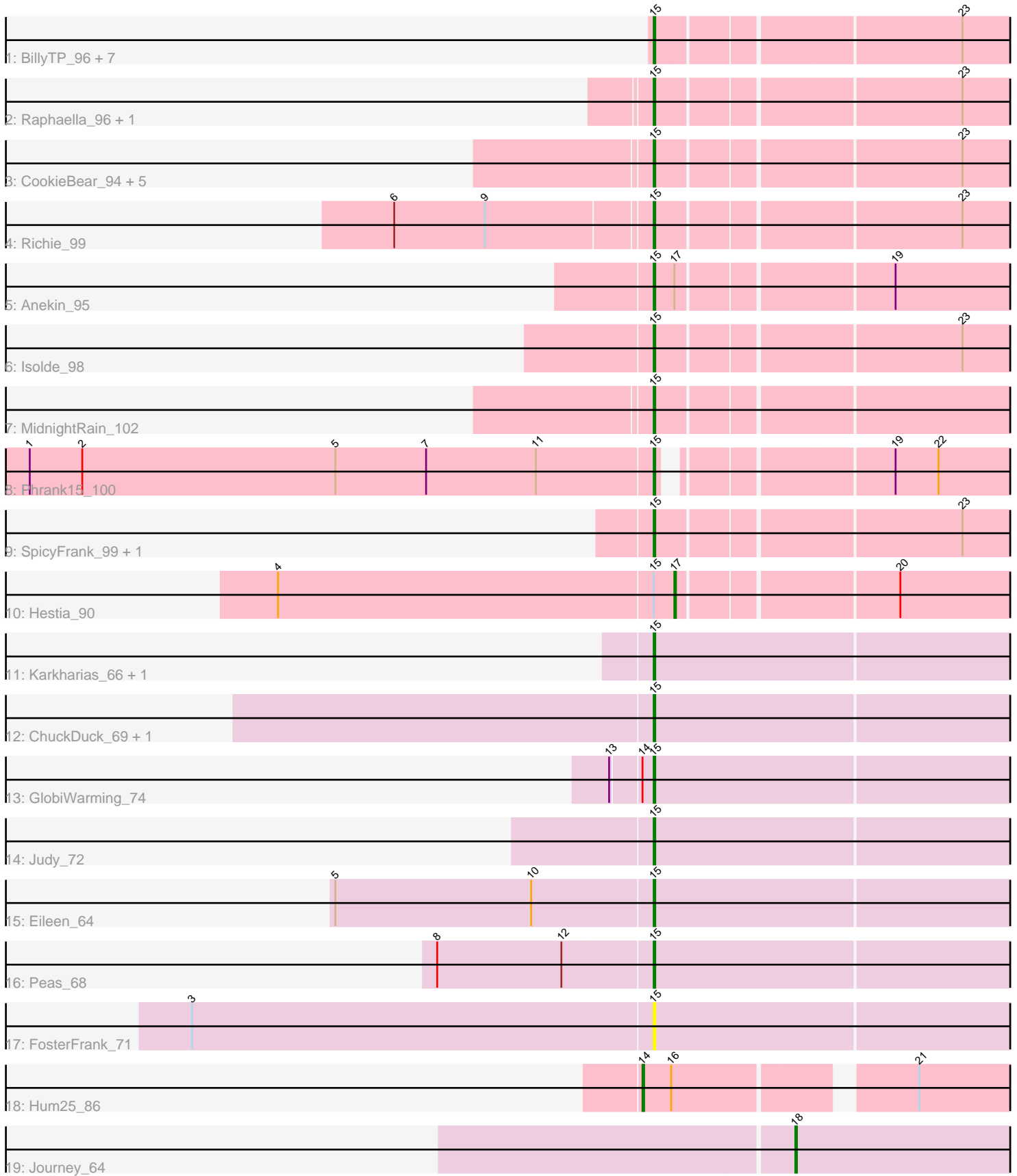


Pham 203143



Note: Tracks are now grouped by subcluster and scaled. Switching in subcluster is indicated by changes in track color. Track scale is now set by default to display the region 30 bp upstream of start 1 to 30 bp downstream of the last possible start. If this default region is judged to be packed too tightly with annotated starts, the track will be further scaled to only show that region of the ORF with annotated starts. This action will be indicated by adding "Zoomed" to the title. For starts, yellow indicates the location of called starts comprised solely of Glimmer/GeneMark auto-annotations, green indicates the location of called starts with at least 1 manual gene annotation.

Pham 203143 Report

This analysis was run 01/18/25 on database version 583.

Pham number 203143 has 35 members, 11 are drafts.

Phages represented in each track:

- Track 1 : BillyTP_96, MaterMagnus_96, EvePickles_96, BenchScraper_96, Tiff81_95, Hillester_99, RadFad_100, Auxilium_93
- Track 2 : Raphaella_96, YoungHarleezy_95
- Track 3 : CookieBear_94, Globfish_94, Lawnathon_98, Faja_96, Sashimi_98, BlueShadow_100
- Track 4 : Richie_99
- Track 5 : Anekin_95
- Track 6 : Isolde_98
- Track 7 : MidnightRain_102
- Track 8 : Phrank15_100
- Track 9 : SpicyFrank_99, Seahorse_101
- Track 10 : Hestia_90
- Track 11 : Karkharias_66, Bridgette_71
- Track 12 : ChuckDuck_69, PeggyLeg03_70
- Track 13 : GlobiWarming_74
- Track 14 : Judy_72
- Track 15 : Eileen_64
- Track 16 : Peas_68
- Track 17 : FosterFrank_71
- Track 18 : Hum25_86
- Track 19 : Journey_64

Summary of Final Annotations (See graph section above for start numbers):

The start number called the most often in the published annotations is 15, it was called in 21 of the 24 non-draft genes in the pham.

Genes that call this "Most Annotated" start:

- Anekin_95, Auxilium_93, BenchScraper_96, BillyTP_96, BlueShadow_100, Bridgette_71, ChuckDuck_69, CookieBear_94, Eileen_64, EvePickles_96, Faja_96, FosterFrank_71, Globfish_94, GlobiWarming_74, Hillester_99, Isolde_98, Judy_72, Karkharias_66, Lawnathon_98, MaterMagnus_96, MidnightRain_102, Peas_68, PeggyLeg03_70, Phrank15_100, RadFad_100, Raphaella_96, Richie_99, Sashimi_98, Seahorse_101, SpicyFrank_99, Tiff81_95, YoungHarleezy_95,

Genes that have the "Most Annotated" start but do not call it:

- Hestia_90,

Genes that do not have the "Most Annotated" start:

- Hum25_86, Journey_64,

Summary by start number:

Start 14:

- Found in 2 of 35 (5.7%) of genes in pham
- Manual Annotations of this start: 1 of 24
- Called 50.0% of time when present
- Phage (with cluster) where this start called: Hum25_86 (FQ),

Start 15:

- Found in 33 of 35 (94.3%) of genes in pham
- Manual Annotations of this start: 21 of 24
- Called 97.0% of time when present
- Phage (with cluster) where this start called: Anekin_95 (AY), Auxilium_93 (AY), BenchScraper_96 (AY), BillyTP_96 (AY), BlueShadow_100 (AY), Bridgette_71 (FA), ChuckDuck_69 (FA), CookieBear_94 (AY), Eileen_64 (FA), EvePickles_96 (AY), Faja_96 (AY), FosterFrank_71 (FA), Globfish_94 (AY), GlobiWarming_74 (FA), Hillester_99 (AY), Isolde_98 (AY), Judy_72 (FA), Karkharias_66 (FA), Lawnathon_98 (AY), MaterMagnus_96 (AY), MidnightRain_102 (AY), Peas_68 (FA), PeggyLeg03_70 (FA), Phrank15_100 (AY), RadFad_100 (AY), Raphaella_96 (AY), Richie_99 (AY), Sashimi_98 (AY), Seahorse_101 (AY), SpicyFrank_99 (AY), Tiff81_95 (AY), YoungHarleezy_95 (AY),

Start 17:

- Found in 2 of 35 (5.7%) of genes in pham
- Manual Annotations of this start: 1 of 24
- Called 50.0% of time when present
- Phage (with cluster) where this start called: Hestia_90 (AY),

Start 18:

- Found in 1 of 35 (2.9%) of genes in pham
- Manual Annotations of this start: 1 of 24
- Called 100.0% of time when present
- Phage (with cluster) where this start called: Journey_64 (N),

Summary by clusters:

There are 4 clusters represented in this pham: AY, FA, N, FQ,

Info for manual annotations of cluster AY:

- Start number 15 was manually annotated 13 times for cluster AY.
- Start number 17 was manually annotated 1 time for cluster AY.

Info for manual annotations of cluster FA:

- Start number 15 was manually annotated 8 times for cluster FA.

Info for manual annotations of cluster FQ:

- Start number 14 was manually annotated 1 time for cluster FQ.

Info for manual annotations of cluster N:

- Start number 18 was manually annotated 1 time for cluster N.

Gene Information:

Gene: Anekin_95 Start: 52237, Stop: 52560, Start Num: 15

Candidate Starts for Anekin_95:

(Start: 15 @52237 has 21 MA's), (Start: 17 @52249 has 1 MA's), (19, 52375),

Gene: Auxilium_93 Start: 49043, Stop: 49363, Start Num: 15

Candidate Starts for Auxilium_93:

(Start: 15 @49043 has 21 MA's), (23, 49223),

Gene: BenchScraper_96 Start: 50794, Stop: 51114, Start Num: 15

Candidate Starts for BenchScraper_96:

(Start: 15 @50794 has 21 MA's), (23, 50974),

Gene: BillyTP_96 Start: 52593, Stop: 52919, Start Num: 15

Candidate Starts for BillyTP_96:

(Start: 15 @52593 has 21 MA's), (23, 52773),

Gene: BlueShadow_100 Start: 52029, Stop: 52349, Start Num: 15

Candidate Starts for BlueShadow_100:

(Start: 15 @52029 has 21 MA's), (23, 52209),

Gene: Bridgette_71 Start: 42699, Stop: 43043, Start Num: 15

Candidate Starts for Bridgette_71:

(Start: 15 @42699 has 21 MA's),

Gene: ChuckDuck_69 Start: 42418, Stop: 42762, Start Num: 15

Candidate Starts for ChuckDuck_69:

(Start: 15 @42418 has 21 MA's),

Gene: CookieBear_94 Start: 51777, Stop: 52097, Start Num: 15

Candidate Starts for CookieBear_94:

(Start: 15 @51777 has 21 MA's), (23, 51957),

Gene: Eileen_64 Start: 40750, Stop: 41094, Start Num: 15

Candidate Starts for Eileen_64:

(5, 40555), (10, 40678), (Start: 15 @40750 has 21 MA's),

Gene: EvePickles_96 Start: 52994, Stop: 53314, Start Num: 15

Candidate Starts for EvePickles_96:

(Start: 15 @52994 has 21 MA's), (23, 53174),

Gene: Faja_96 Start: 52066, Stop: 52386, Start Num: 15

Candidate Starts for Faja_96:

(Start: 15 @52066 has 21 MA's), (23, 52246),

Gene: FosterFrank_71 Start: 42119, Stop: 42463, Start Num: 15
Candidate Starts for FosterFrank_71:
(3, 41831), (Start: 15 @42119 has 21 MA's),

Gene: Globfish_94 Start: 50972, Stop: 51292, Start Num: 15
Candidate Starts for Globfish_94:
(Start: 15 @50972 has 21 MA's), (23, 51152),

Gene: GlobiWarming_74 Start: 42547, Stop: 42891, Start Num: 15
Candidate Starts for GlobiWarming_74:
(13, 42526), (Start: 14 @42541 has 1 MA's), (Start: 15 @42547 has 21 MA's),

Gene: Hestia_90 Start: 50238, Stop: 50558, Start Num: 17
Candidate Starts for Hestia_90:
(4, 49992), (Start: 15 @50226 has 21 MA's), (Start: 17 @50238 has 1 MA's), (20, 50367),

Gene: Hillester_99 Start: 52313, Stop: 52633, Start Num: 15
Candidate Starts for Hillester_99:
(Start: 15 @52313 has 21 MA's), (23, 52493),

Gene: Hum25_86 Start: 42285, Stop: 42626, Start Num: 14
Candidate Starts for Hum25_86:
(Start: 14 @42285 has 1 MA's), (16, 42303), (21, 42438),

Gene: Isolde_98 Start: 52809, Stop: 53129, Start Num: 15
Candidate Starts for Isolde_98:
(Start: 15 @52809 has 21 MA's), (23, 52989),

Gene: Journey_64 Start: 41500, Stop: 41799, Start Num: 18
Candidate Starts for Journey_64:
(Start: 18 @41500 has 1 MA's),

Gene: Judy_72 Start: 43025, Stop: 43369, Start Num: 15
Candidate Starts for Judy_72:
(Start: 15 @43025 has 21 MA's),

Gene: Karkharias_66 Start: 42195, Stop: 42539, Start Num: 15
Candidate Starts for Karkharias_66:
(Start: 15 @42195 has 21 MA's),

Gene: Lawnathon_98 Start: 52639, Stop: 52959, Start Num: 15
Candidate Starts for Lawnathon_98:
(Start: 15 @52639 has 21 MA's), (23, 52819),

Gene: MaterMagnus_96 Start: 52654, Stop: 52974, Start Num: 15
Candidate Starts for MaterMagnus_96:
(Start: 15 @52654 has 21 MA's), (23, 52834),

Gene: MidnightRain_102 Start: 53249, Stop: 53569, Start Num: 15
Candidate Starts for MidnightRain_102:
(Start: 15 @53249 has 21 MA's),

Gene: Peas_68 Start: 43688, Stop: 44032, Start Num: 15

Candidate Starts for Peas_68:
(8, 43556), (12, 43634), (Start: 15 @43688 has 21 MA's),

Gene: PeggyLeg03_70 Start: 42854, Stop: 43198, Start Num: 15
Candidate Starts for PeggyLeg03_70:
(Start: 15 @42854 has 21 MA's),

Gene: Phrank15_100 Start: 52150, Stop: 52461, Start Num: 15
Candidate Starts for Phrank15_100:
(1, 51760), (2, 51793), (5, 51952), (7, 52009), (11, 52078), (Start: 15 @52150 has 21 MA's), (19, 52276), (22, 52303),

Gene: RadFad_100 Start: 52313, Stop: 52633, Start Num: 15
Candidate Starts for RadFad_100:
(Start: 15 @52313 has 21 MA's), (23, 52493),

Gene: Raphaella_96 Start: 51282, Stop: 51608, Start Num: 15
Candidate Starts for Raphaella_96:
(Start: 15 @51282 has 21 MA's), (23, 51462),

Gene: Richie_99 Start: 53442, Stop: 53762, Start Num: 15
Candidate Starts for Richie_99:
(6, 53286), (9, 53343), (Start: 15 @53442 has 21 MA's), (23, 53622),

Gene: Sashimi_98 Start: 51797, Stop: 52117, Start Num: 15
Candidate Starts for Sashimi_98:
(Start: 15 @51797 has 21 MA's), (23, 51977),

Gene: Seahorse_101 Start: 56066, Stop: 56386, Start Num: 15
Candidate Starts for Seahorse_101:
(Start: 15 @56066 has 21 MA's), (23, 56246),

Gene: SpicyFrank_99 Start: 51851, Stop: 52171, Start Num: 15
Candidate Starts for SpicyFrank_99:
(Start: 15 @51851 has 21 MA's), (23, 52031),

Gene: Tiff81_95 Start: 50115, Stop: 50435, Start Num: 15
Candidate Starts for Tiff81_95:
(Start: 15 @50115 has 21 MA's), (23, 50295),

Gene: YoungHarleezy_95 Start: 52603, Stop: 52923, Start Num: 15
Candidate Starts for YoungHarleezy_95:
(Start: 15 @52603 has 21 MA's), (23, 52783),