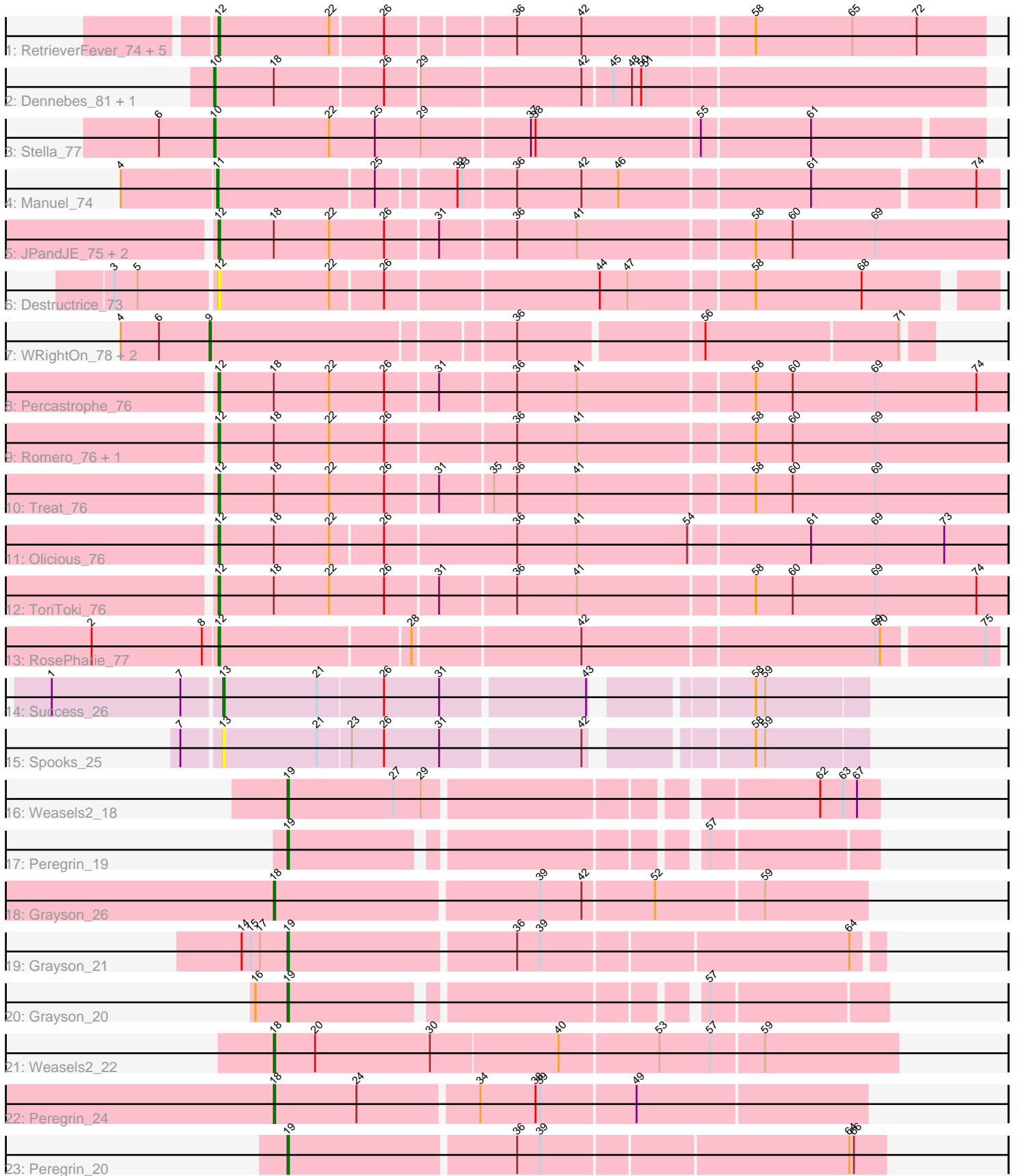


Pham 203151



Note: Tracks are now grouped by subcluster and scaled. Switching in subcluster is indicated by changes in track color. Track scale is now set by default to display the region 30 bp upstream of start 1 to 30 bp downstream of the last possible start. If this default region is judged to be packed too tightly with annotated starts, the track will be further scaled to only show that region of the ORF with annotated starts. This action will be indicated by adding "Zoomed" to the title. For starts, yellow indicates the location of called starts comprised solely of Glimmer/GeneMark auto-annotations, green indicates the location of called starts with at least 1 manual gene annotation.

Pham 203151 Report

This analysis was run 01/18/25 on database version 583.

Pham number 203151 has 34 members, 4 are drafts.

Phages represented in each track:

- Track 1 : RetrieverFever_74, FlowerPower_74, Fabian_73, Gremlin23_74, Geostin_69, Vorvolakos_75
- Track 2 : Dennebes_81, Rideau_80
- Track 3 : Stella_77
- Track 4 : Manuel_74
- Track 5 : JPandJE_75, HaugeAnator_76, ZooBear_76
- Track 6 : Destructrice_73
- Track 7 : WRightOn_78, Kumquat_74, Zeigle_74
- Track 8 : Percastrophe_76
- Track 9 : Romero_76, Immanuel3_74
- Track 10 : Treat_76
- Track 11 : Olicious_76
- Track 12 : ToriToki_76
- Track 13 : RosePharie_77
- Track 14 : Success_26
- Track 15 : Spooks_25
- Track 16 : Weasels2_18
- Track 17 : Peregrin_19
- Track 18 : Grayson_26
- Track 19 : Grayson_21
- Track 20 : Grayson_20
- Track 21 : Weasels2_22
- Track 22 : Peregrin_24
- Track 23 : Peregrin_20

Summary of Final Annotations (See graph section above for start numbers):

The start number called the most often in the published annotations is 12, it was called in 15 of the 30 non-draft genes in the pham.

Genes that call this "Most Annotated" start:

- Destructrice_73, Fabian_73, FlowerPower_74, Geostin_69, Gremlin23_74, HaugeAnator_76, Immanuel3_74, JPandJE_75, Olicious_76, Percastrophe_76, RetrieverFever_74, Romero_76, RosePharie_77, ToriToki_76, Treat_76,

Vorvolakos_75, ZooBear_76,

Genes that have the "Most Annotated" start but do not call it:

-

Genes that do not have the "Most Annotated" start:

- Dennebes_81, Grayson_20, Grayson_21, Grayson_26, Kumquat_74, Manuel_74, Peregrin_19, Peregrin_20, Peregrin_24, Rideau_80, Spooks_25, Stella_77, Success_26, WRightOn_78, Weasels2_18, Weasels2_22, Zeigle_74,

Summary by start number:

Start 9:

- Found in 3 of 34 (8.8%) of genes in pham
- Manual Annotations of this start: 3 of 30
- Called 100.0% of time when present
- Phage (with cluster) where this start called: Kumquat_74 (BF), WRightOn_78 (BF), Zeigle_74 (BF),

Start 10:

- Found in 3 of 34 (8.8%) of genes in pham
- Manual Annotations of this start: 2 of 30
- Called 100.0% of time when present
- Phage (with cluster) where this start called: Dennebes_81 (BF), Rideau_80 (BF), Stella_77 (BF),

Start 11:

- Found in 1 of 34 (2.9%) of genes in pham
- Manual Annotations of this start: 1 of 30
- Called 100.0% of time when present
- Phage (with cluster) where this start called: Manuel_74 (BF),

Start 12:

- Found in 17 of 34 (50.0%) of genes in pham
- Manual Annotations of this start: 15 of 30
- Called 100.0% of time when present
- Phage (with cluster) where this start called: Destructrice_73 (BF), Fabian_73 (BF), FlowerPower_74 (BF), Geostin_69 (BF), Gremlin23_74 (BF), HaugeAnator_76 (BF), Immanuel3_74 (BF), JPandJE_75 (BF), Olicious_76 (BF), Percastrophe_76 (BF), RetrieverFever_74 (BF), Romero_76 (BF), RosePharie_77 (BF), ToriToki_76 (BF), Treat_76 (BF), Vorvolakos_75 (BF), ZooBear_76 (BF),

Start 13:

- Found in 2 of 34 (5.9%) of genes in pham
- Manual Annotations of this start: 1 of 30
- Called 100.0% of time when present
- Phage (with cluster) where this start called: Spooks_25 (BT), Success_26 (BT),

Start 18:

- Found in 14 of 34 (41.2%) of genes in pham
- Manual Annotations of this start: 3 of 30
- Called 21.4% of time when present

- Phage (with cluster) where this start called: Grayson_26 (CB), Peregrin_24 (CB), Weasels2_22 (CB),

Start 19:

- Found in 5 of 34 (14.7%) of genes in pham
- Manual Annotations of this start: 5 of 30
- Called 100.0% of time when present
- Phage (with cluster) where this start called: Grayson_20 (CB), Grayson_21 (CB), Peregrin_19 (CB), Peregrin_20 (CB), Weasels2_18 (CB),

Summary by clusters:

There are 3 clusters represented in this pham: BT, CB, BF,

Info for manual annotations of cluster BF:

- Start number 9 was manually annotated 3 times for cluster BF.
- Start number 10 was manually annotated 2 times for cluster BF.
- Start number 11 was manually annotated 1 time for cluster BF.
- Start number 12 was manually annotated 15 times for cluster BF.

Info for manual annotations of cluster BT:

- Start number 13 was manually annotated 1 time for cluster BT.

Info for manual annotations of cluster CB:

- Start number 18 was manually annotated 3 times for cluster CB.
- Start number 19 was manually annotated 5 times for cluster CB.

Gene Information:

Gene: Dennebes_81 Start: 39474, Stop: 38989, Start Num: 10

Candidate Starts for Dennebes_81:

(Start: 10 @39474 has 2 MA's), (Start: 18 @39435 has 3 MA's), (26, 39366), (29, 39345), (42, 39243), (45, 39225), (48, 39213), (50, 39207), (51, 39204),

Gene: Destructrice_73 Start: 38837, Stop: 38355, Start Num: 12

Candidate Starts for Destructrice_73:

(3, 38900), (5, 38885), (Start: 12 @38837 has 15 MA's), (22, 38765), (26, 38732), (44, 38597), (47, 38579), (58, 38501), (68, 38432),

Gene: Fabian_73 Start: 38951, Stop: 38469, Start Num: 12

Candidate Starts for Fabian_73:

(Start: 12 @38951 has 15 MA's), (22, 38879), (26, 38846), (36, 38768), (42, 38726), (58, 38618), (65, 38555), (72, 38513),

Gene: FlowerPower_74 Start: 38621, Stop: 38139, Start Num: 12

Candidate Starts for FlowerPower_74:

(Start: 12 @38621 has 15 MA's), (22, 38549), (26, 38516), (36, 38438), (42, 38396), (58, 38288), (65, 38225), (72, 38183),

Gene: Geostin_69 Start: 38621, Stop: 38139, Start Num: 12

Candidate Starts for Geostin_69:

(Start: 12 @38621 has 15 MA's), (22, 38549), (26, 38516), (36, 38438), (42, 38396), (58, 38288), (65, 38225), (72, 38183),

Gene: Grayson_26 Start: 7449, Stop: 7075, Start Num: 18

Candidate Starts for Grayson_26:

(Start: 18 @7449 has 3 MA's), (39, 7281), (42, 7254), (52, 7209), (59, 7140),

Gene: Grayson_21 Start: 6068, Stop: 5700, Start Num: 19

Candidate Starts for Grayson_21:

(14, 6098), (15, 6092), (17, 6086), (Start: 19 @6068 has 5 MA's), (36, 5924), (39, 5909), (64, 5717),

Gene: Grayson_20 Start: 5707, Stop: 5357, Start Num: 19

Candidate Starts for Grayson_20:

(16, 5728), (Start: 19 @5707 has 5 MA's), (57, 5467),

Gene: Gremlin23_74 Start: 38621, Stop: 38139, Start Num: 12

Candidate Starts for Gremlin23_74:

(Start: 12 @38621 has 15 MA's), (22, 38549), (26, 38516), (36, 38438), (42, 38396), (58, 38288), (65, 38225), (72, 38183),

Gene: HaugeAnator_76 Start: 38999, Stop: 38496, Start Num: 12

Candidate Starts for HaugeAnator_76:

(Start: 12 @38999 has 15 MA's), (Start: 18 @38963 has 3 MA's), (22, 38927), (26, 38891), (31, 38858), (36, 38810), (41, 38771), (58, 38660), (60, 38636), (69, 38582),

Gene: Immanuel3_74 Start: 39005, Stop: 38502, Start Num: 12

Candidate Starts for Immanuel3_74:

(Start: 12 @39005 has 15 MA's), (Start: 18 @38969 has 3 MA's), (22, 38933), (26, 38897), (36, 38816), (41, 38777), (58, 38666), (60, 38642), (69, 38588),

Gene: JPandJE_75 Start: 39350, Stop: 38847, Start Num: 12

Candidate Starts for JPandJE_75:

(Start: 12 @39350 has 15 MA's), (Start: 18 @39314 has 3 MA's), (22, 39278), (26, 39242), (31, 39209), (36, 39161), (41, 39122), (58, 39011), (60, 38987), (69, 38933),

Gene: Kumquat_74 Start: 38229, Stop: 37786, Start Num: 9

Candidate Starts for Kumquat_74:

(4, 38286), (6, 38262), (Start: 9 @38229 has 3 MA's), (36, 38040), (56, 37926), (71, 37803),

Gene: Manuel_74 Start: 38664, Stop: 38179, Start Num: 11

Candidate Starts for Manuel_74:

(4, 38724), (Start: 11 @38664 has 1 MA's), (25, 38565), (32, 38517), (33, 38514), (36, 38481), (42, 38439), (46, 38415), (61, 38295), (74, 38193),

Gene: Olicious_76 Start: 39002, Stop: 38499, Start Num: 12

Candidate Starts for Olicious_76:

(Start: 12 @39002 has 15 MA's), (Start: 18 @38966 has 3 MA's), (22, 38930), (26, 38897), (36, 38813), (41, 38774), (54, 38702), (61, 38627), (69, 38585), (73, 38540),

Gene: Percastrophe_76 Start: 38934, Stop: 38431, Start Num: 12

Candidate Starts for Percastrophe_76:

(Start: 12 @38934 has 15 MA's), (Start: 18 @38898 has 3 MA's), (22, 38862), (26, 38826), (31, 38793), (36, 38745), (41, 38706), (58, 38595), (60, 38571), (69, 38517), (74, 38451),

Gene: Peregrin_19 Start: 5539, Stop: 5195, Start Num: 19

Candidate Starts for Peregrin_19:

(Start: 19 @5539 has 5 MA's), (57, 5299),

Gene: Peregrin_24 Start: 6762, Stop: 6388, Start Num: 18

Candidate Starts for Peregrin_24:

(Start: 18 @6762 has 3 MA's), (24, 6708), (34, 6633), (38, 6597), (39, 6594), (49, 6534),

Gene: Peregrin_20 Start: 5906, Stop: 5532, Start Num: 19

Candidate Starts for Peregrin_20:

(Start: 19 @5906 has 5 MA's), (36, 5762), (39, 5747), (64, 5555), (66, 5552),

Gene: RetrieverFever_74 Start: 38621, Stop: 38139, Start Num: 12

Candidate Starts for RetrieverFever_74:

(Start: 12 @38621 has 15 MA's), (22, 38549), (26, 38516), (36, 38438), (42, 38396), (58, 38288), (65, 38225), (72, 38183),

Gene: Rideau_80 Start: 39365, Stop: 38880, Start Num: 10

Candidate Starts for Rideau_80:

(Start: 10 @39365 has 2 MA's), (Start: 18 @39326 has 3 MA's), (26, 39257), (29, 39236), (42, 39134), (45, 39116), (48, 39104), (50, 39098), (51, 39095),

Gene: Romero_76 Start: 38995, Stop: 38492, Start Num: 12

Candidate Starts for Romero_76:

(Start: 12 @38995 has 15 MA's), (Start: 18 @38959 has 3 MA's), (22, 38923), (26, 38887), (36, 38806), (41, 38767), (58, 38656), (60, 38632), (69, 38578),

Gene: RosePharie_77 Start: 39114, Stop: 38629, Start Num: 12

Candidate Starts for RosePharie_77:

(2, 39192), (8, 39123), (Start: 12 @39114 has 15 MA's), (28, 38994), (42, 38889), (69, 38703), (70, 38700), (75, 38637),

Gene: Spooks_25 Start: 18379, Stop: 17993, Start Num: 13

Candidate Starts for Spooks_25:

(7, 18403), (Start: 13 @18379 has 1 MA's), (21, 18319), (23, 18298), (26, 18277), (31, 18241), (42, 18154), (58, 18064), (59, 18058),

Gene: Stella_77 Start: 39604, Stop: 39116, Start Num: 10

Candidate Starts for Stella_77:

(6, 39637), (Start: 10 @39604 has 2 MA's), (22, 39529), (25, 39499), (29, 39469), (37, 39400), (38, 39397), (55, 39292), (61, 39223),

Gene: Success_26 Start: 17594, Stop: 17208, Start Num: 13

Candidate Starts for Success_26:

(1, 17702), (7, 17618), (Start: 13 @17594 has 1 MA's), (21, 17534), (26, 17492), (31, 17456), (43, 17366), (58, 17279), (59, 17273),

Gene: ToriToki_76 Start: 38998, Stop: 38495, Start Num: 12

Candidate Starts for ToriToki_76:

(Start: 12 @38998 has 15 MA's), (Start: 18 @38962 has 3 MA's), (22, 38926), (26, 38890), (31, 38857), (36, 38809), (41, 38770), (58, 38659), (60, 38635), (69, 38581), (74, 38515),

Gene: Treat_76 Start: 38873, Stop: 38370, Start Num: 12

Candidate Starts for Treat_76:

(Start: 12 @38873 has 15 MA's), (Start: 18 @38837 has 3 MA's), (22, 38801), (26, 38765), (31, 38732), (35, 38699), (36, 38684), (41, 38645), (58, 38534), (60, 38510), (69, 38456),

Gene: Vorvolakos_75 Start: 38620, Stop: 38138, Start Num: 12

Candidate Starts for Vorvolakos_75:

(Start: 12 @38620 has 15 MA's), (22, 38548), (26, 38515), (36, 38437), (42, 38395), (58, 38287), (65, 38224), (72, 38182),

Gene: WRightOn_78 Start: 38385, Stop: 37942, Start Num: 9

Candidate Starts for WRightOn_78:

(4, 38442), (6, 38418), (Start: 9 @38385 has 3 MA's), (36, 38196), (56, 38082), (71, 37959),

Gene: Weasels2_18 Start: 5542, Stop: 5186, Start Num: 19

Candidate Starts for Weasels2_18:

(Start: 19 @5542 has 5 MA's), (27, 5473), (29, 5455), (62, 5224), (63, 5209), (67, 5200),

Gene: Weasels2_22 Start: 6969, Stop: 6571, Start Num: 18

Candidate Starts for Weasels2_22:

(Start: 18 @6969 has 3 MA's), (20, 6942), (30, 6867), (40, 6786), (53, 6723), (57, 6690), (59, 6657),

Gene: Zeigle_74 Start: 38229, Stop: 37786, Start Num: 9

Candidate Starts for Zeigle_74:

(4, 38286), (6, 38262), (Start: 9 @38229 has 3 MA's), (36, 38040), (56, 37926), (71, 37803),

Gene: ZooBear_76 Start: 38999, Stop: 38496, Start Num: 12

Candidate Starts for ZooBear_76:

(Start: 12 @38999 has 15 MA's), (Start: 18 @38963 has 3 MA's), (22, 38927), (26, 38891), (31, 38858), (36, 38810), (41, 38771), (58, 38660), (60, 38636), (69, 38582),