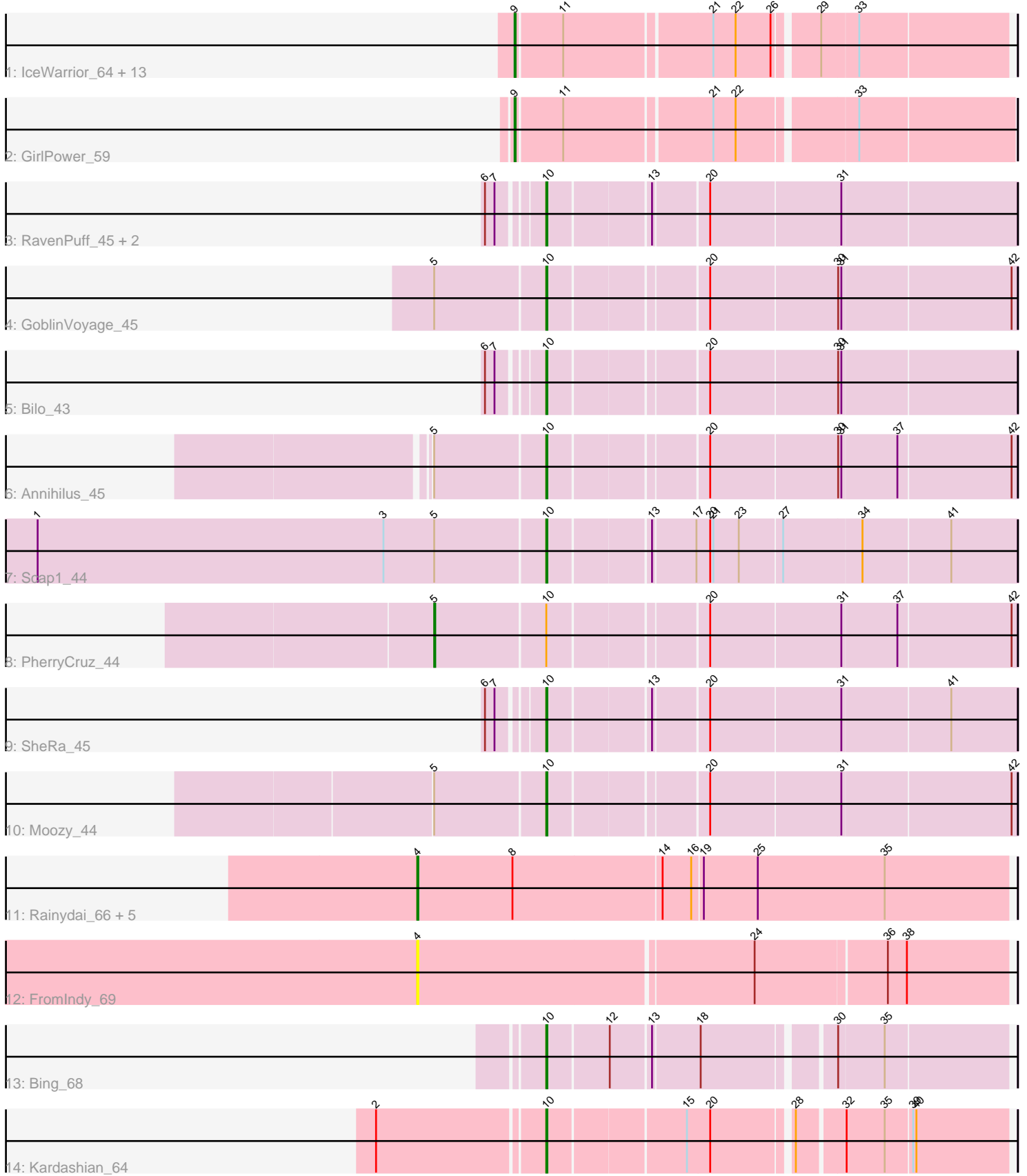


Pham 203156



Note: Tracks are now grouped by subcluster and scaled. Switching in subcluster is indicated by changes in track color. Track scale is now set by default to display the region 30 bp upstream of start 1 to 30 bp downstream of the last possible start. If this default region is judged to be packed too tightly with annotated starts, the track will be further scaled to only show that region of the ORF with annotated starts. This action will be indicated by adding "Zoomed" to the title. For starts, yellow indicates the location of called starts comprised solely of Glimmer/GeneMark auto-annotations, green indicates the location of called starts with at least 1 manual gene annotation.

## Pham 203156 Report

This analysis was run 01/18/25 on database version 583.

Pham number 203156 has 34 members, 2 are drafts.

Phages represented in each track:

- Track 1 : IceWarrior\_64, Hoshi\_66, Namu\_66, Indigenous\_67, CherryBlossom\_65, Rima\_66, TaidaOne\_67, Meibysrarus\_63, TonyStarch\_64, OlympicHelado\_67, Spectropatronm\_65, FidgetOrca\_67, Jaylociraptor\_65, Maya\_65
- Track 2 : GirlPower\_59
- Track 3 : RavenPuff\_45, HotFries\_44, Doxi13\_46
- Track 4 : GoblinVoyage\_45
- Track 5 : Bilo\_43
- Track 6 : Annihilus\_45
- Track 7 : Scap1\_44
- Track 8 : PherryCruz\_44
- Track 9 : SheRa\_45
- Track 10 : Moozy\_44
- Track 11 : Rainydai\_66, CricKo\_68, Miek\_64, Thiqqums\_68, Regigigas\_68, SendItCS\_63
- Track 12 : FromIndy\_69
- Track 13 : Bing\_68
- Track 14 : Kardashian\_64

### ***Summary of Final Annotations (See graph section above for start numbers):***

The start number called the most often in the published annotations is 9, it was called in 15 of the 32 non-draft genes in the pham.

Genes that call this "Most Annotated" start:

- CherryBlossom\_65, FidgetOrca\_67, GirlPower\_59, Hoshi\_66, IceWarrior\_64, Indigenous\_67, Jaylociraptor\_65, Maya\_65, Meibysrarus\_63, Namu\_66, OlympicHelado\_67, Rima\_66, Spectropatronm\_65, TaidaOne\_67, TonyStarch\_64,

Genes that have the "Most Annotated" start but do not call it:

- 

Genes that do not have the "Most Annotated" start:

- Annihilus\_45, Bilo\_43, Bing\_68, CricKo\_68, Doxi13\_46, FromIndy\_69, GoblinVoyage\_45, HotFries\_44, Kardashian\_64, Miek\_64, Moozy\_44,

PherryCruz\_44, Rainydai\_66, RavenPuff\_45, Regigigas\_68, Scap1\_44, SendItCS\_63, SheRa\_45, Thiqqums\_68,

### Summary by start number:

Start 4:

- Found in 7 of 34 ( 20.6% ) of genes in pham
- Manual Annotations of this start: 5 of 32
- Called 100.0% of time when present
- Phage (with cluster) where this start called: CricKo\_68 (BI4), FromIndy\_69 (BI4), Miek\_64 (BI4), Rainydai\_66 (BI4), Regigigas\_68 (BI4), SendItCS\_63 (BI4), Thiqqums\_68 (BI4),

Start 5:

- Found in 5 of 34 ( 14.7% ) of genes in pham
- Manual Annotations of this start: 1 of 32
- Called 20.0% of time when present
- Phage (with cluster) where this start called: PherryCruz\_44 (BI2),

Start 9:

- Found in 15 of 34 ( 44.1% ) of genes in pham
- Manual Annotations of this start: 15 of 32
- Called 100.0% of time when present
- Phage (with cluster) where this start called: CherryBlossom\_65 (BI1), FidgetOrca\_67 (BI1), GirlPower\_59 (BI1), Hoshi\_66 (BI1), IceWarrior\_64 (BI1), Indigenous\_67 (BI1), Jaylociraptor\_65 (BI1), Maya\_65 (BI1), Meibysrarus\_63 (BI1), Namu\_66 (BI1), OlympicHelado\_67 (BI1), Rima\_66 (BI1), Spectropatronm\_65 (BI1), TaidaOne\_67 (BI1), TonyStarch\_64 (BI1),

Start 10:

- Found in 12 of 34 ( 35.3% ) of genes in pham
- Manual Annotations of this start: 11 of 32
- Called 91.7% of time when present
- Phage (with cluster) where this start called: Annihilus\_45 (BI2), Bilo\_43 (BI2), Bing\_68 (BI5), Doxi13\_46 (BI2), GoblinVoyage\_45 (BI2), HotFries\_44 (BI2), Kardashian\_64 (BI6), Moozy\_44 (BI2), RavenPuff\_45 (BI2), Scap1\_44 (BI2), SheRa\_45 (BI2),

### Summary by clusters:

There are 5 clusters represented in this pham: BI6, BI4, BI5, BI2, BI1,

Info for manual annotations of cluster BI1:

- Start number 9 was manually annotated 15 times for cluster BI1.

Info for manual annotations of cluster BI2:

- Start number 5 was manually annotated 1 time for cluster BI2.
- Start number 10 was manually annotated 9 times for cluster BI2.

Info for manual annotations of cluster BI4:

- Start number 4 was manually annotated 5 times for cluster BI4.

Info for manual annotations of cluster BI5:

- Start number 10 was manually annotated 1 time for cluster BI5.

Info for manual annotations of cluster BI6:

- Start number 10 was manually annotated 1 time for cluster BI6.

### **Gene Information:**

Gene: Annihilus\_45 Start: 34571, Stop: 34990, Start Num: 10

Candidate Starts for Annihilus\_45:

(Start: 5 @34469 has 1 MA's), (Start: 10 @34571 has 11 MA's), (20, 34709), (30, 34826), (31, 34829), (37, 34880), (42, 34985),

Gene: Bilo\_43 Start: 34722, Stop: 35141, Start Num: 10

Candidate Starts for Bilo\_43:

(6, 34677), (7, 34686), (Start: 10 @34722 has 11 MA's), (20, 34860), (30, 34977), (31, 34980),

Gene: Bing\_68 Start: 43846, Stop: 44244, Start Num: 10

Candidate Starts for Bing\_68:

(Start: 10 @43846 has 11 MA's), (12, 43900), (13, 43936), (18, 43978), (30, 44089), (35, 44131),

Gene: CherryBlossom\_65 Start: 42942, Stop: 43376, Start Num: 9

Candidate Starts for CherryBlossom\_65:

(Start: 9 @42942 has 15 MA's), (11, 42984), (21, 43116), (22, 43137), (26, 43170), (29, 43206), (33, 43239),

Gene: CricKo\_68 Start: 43242, Stop: 43793, Start Num: 4

Candidate Starts for CricKo\_68:

(Start: 4 @43242 has 5 MA's), (8, 43332), (14, 43470), (16, 43497), (19, 43506), (25, 43557), (35, 43677),

Gene: Doxi13\_46 Start: 34768, Stop: 35187, Start Num: 10

Candidate Starts for Doxi13\_46:

(6, 34723), (7, 34732), (Start: 10 @34768 has 11 MA's), (13, 34858), (20, 34906), (31, 35026),

Gene: FidgetOrca\_67 Start: 43478, Stop: 43912, Start Num: 9

Candidate Starts for FidgetOrca\_67:

(Start: 9 @43478 has 15 MA's), (11, 43520), (21, 43652), (22, 43673), (26, 43706), (29, 43742), (33, 43775),

Gene: FromIndy\_69 Start: 42844, Stop: 43386, Start Num: 4

Candidate Starts for FromIndy\_69:

(Start: 4 @42844 has 5 MA's), (24, 43153), (36, 43273), (38, 43291),

Gene: GirlPower\_59 Start: 43211, Stop: 43651, Start Num: 9

Candidate Starts for GirlPower\_59:

(Start: 9 @43211 has 15 MA's), (11, 43253), (21, 43385), (22, 43406), (33, 43508),

Gene: GoblinVoyage\_45 Start: 34559, Stop: 34978, Start Num: 10

Candidate Starts for GoblinVoyage\_45:

(Start: 5 @34457 has 1 MA's), (Start: 10 @34559 has 11 MA's), (20, 34697), (30, 34814), (31, 34817), (42, 34973),

Gene: Hoshi\_66 Start: 43085, Stop: 43519, Start Num: 9  
Candidate Starts for Hoshi\_66:  
(Start: 9 @43085 has 15 MA's), (11, 43127), (21, 43259), (22, 43280), (26, 43313), (29, 43349), (33, 43382),

Gene: HotFries\_44 Start: 34745, Stop: 35164, Start Num: 10  
Candidate Starts for HotFries\_44:  
(6, 34700), (7, 34709), (Start: 10 @34745 has 11 MA's), (13, 34835), (20, 34883), (31, 35003),

Gene: IceWarrior\_64 Start: 42761, Stop: 43195, Start Num: 9  
Candidate Starts for IceWarrior\_64:  
(Start: 9 @42761 has 15 MA's), (11, 42803), (21, 42935), (22, 42956), (26, 42989), (29, 43025), (33, 43058),

Gene: Indigenous\_67 Start: 43482, Stop: 43916, Start Num: 9  
Candidate Starts for Indigenous\_67:  
(Start: 9 @43482 has 15 MA's), (11, 43524), (21, 43656), (22, 43677), (26, 43710), (29, 43746), (33, 43779),

Gene: Jaylociraptor\_65 Start: 43078, Stop: 43512, Start Num: 9  
Candidate Starts for Jaylociraptor\_65:  
(Start: 9 @43078 has 15 MA's), (11, 43120), (21, 43252), (22, 43273), (26, 43306), (29, 43342), (33, 43375),

Gene: Kardashian\_64 Start: 43749, Stop: 44150, Start Num: 10  
Candidate Starts for Kardashian\_64:  
(2, 43602), (Start: 10 @43749 has 11 MA's), (15, 43872), (20, 43893), (28, 43962), (32, 44001), (35, 44037), (39, 44061), (40, 44064),

Gene: Maya\_65 Start: 43092, Stop: 43526, Start Num: 9  
Candidate Starts for Maya\_65:  
(Start: 9 @43092 has 15 MA's), (11, 43134), (21, 43266), (22, 43287), (26, 43320), (29, 43356), (33, 43389),

Gene: Meibysrarus\_63 Start: 42455, Stop: 42889, Start Num: 9  
Candidate Starts for Meibysrarus\_63:  
(Start: 9 @42455 has 15 MA's), (11, 42497), (21, 42629), (22, 42650), (26, 42683), (29, 42719), (33, 42752),

Gene: Miek\_64 Start: 42024, Stop: 42575, Start Num: 4  
Candidate Starts for Miek\_64:  
(Start: 4 @42024 has 5 MA's), (8, 42114), (14, 42252), (16, 42279), (19, 42288), (25, 42339), (35, 42459),

Gene: Moozy\_44 Start: 34555, Stop: 34974, Start Num: 10  
Candidate Starts for Moozy\_44:  
(Start: 5 @34453 has 1 MA's), (Start: 10 @34555 has 11 MA's), (20, 34693), (31, 34813), (42, 34969),

Gene: Namo\_66 Start: 43429, Stop: 43863, Start Num: 9  
Candidate Starts for Namo\_66:  
(Start: 9 @43429 has 15 MA's), (11, 43471), (21, 43603), (22, 43624), (26, 43657), (29, 43693), (33, 43726),

Gene: OlympicHelado\_67 Start: 43545, Stop: 43979, Start Num: 9

Candidate Starts for OlympicHelado\_67:

(Start: 9 @43545 has 15 MA's), (11, 43587), (21, 43719), (22, 43740), (26, 43773), (29, 43809), (33, 43842),

Gene: PherryCruz\_44 Start: 34642, Stop: 35163, Start Num: 5

Candidate Starts for PherryCruz\_44:

(Start: 5 @34642 has 1 MA's), (Start: 10 @34744 has 11 MA's), (20, 34882), (31, 35002), (37, 35053), (42, 35158),

Gene: Rainydai\_66 Start: 43242, Stop: 43793, Start Num: 4

Candidate Starts for Rainydai\_66:

(Start: 4 @43242 has 5 MA's), (8, 43332), (14, 43470), (16, 43497), (19, 43506), (25, 43557), (35, 43677),

Gene: RavenPuff\_45 Start: 34764, Stop: 35183, Start Num: 10

Candidate Starts for RavenPuff\_45:

(6, 34719), (7, 34728), (Start: 10 @34764 has 11 MA's), (13, 34854), (20, 34902), (31, 35022),

Gene: Regigigas\_68 Start: 42854, Stop: 43405, Start Num: 4

Candidate Starts for Regigigas\_68:

(Start: 4 @42854 has 5 MA's), (8, 42944), (14, 43082), (16, 43109), (19, 43118), (25, 43169), (35, 43289),

Gene: Rima\_66 Start: 43429, Stop: 43863, Start Num: 9

Candidate Starts for Rima\_66:

(Start: 9 @43429 has 15 MA's), (11, 43471), (21, 43603), (22, 43624), (26, 43657), (29, 43693), (33, 43726),

Gene: Scap1\_44 Start: 34342, Stop: 34764, Start Num: 10

Candidate Starts for Scap1\_44:

(1, 33865), (3, 34192), (Start: 5 @34240 has 1 MA's), (Start: 10 @34342 has 11 MA's), (13, 34432), (17, 34471), (20, 34483), (21, 34486), (23, 34510), (27, 34549), (34, 34621), (41, 34702),

Gene: SendItCS\_63 Start: 42012, Stop: 42563, Start Num: 4

Candidate Starts for SendItCS\_63:

(Start: 4 @42012 has 5 MA's), (8, 42102), (14, 42240), (16, 42267), (19, 42276), (25, 42327), (35, 42447),

Gene: SheRa\_45 Start: 34622, Stop: 35041, Start Num: 10

Candidate Starts for SheRa\_45:

(6, 34577), (7, 34586), (Start: 10 @34622 has 11 MA's), (13, 34712), (20, 34760), (31, 34880), (41, 34979),

Gene: Spectropatronm\_65 Start: 43085, Stop: 43519, Start Num: 9

Candidate Starts for Spectropatronm\_65:

(Start: 9 @43085 has 15 MA's), (11, 43127), (21, 43259), (22, 43280), (26, 43313), (29, 43349), (33, 43382),

Gene: TaidaOne\_67 Start: 43991, Stop: 44425, Start Num: 9

Candidate Starts for TaidaOne\_67:

(Start: 9 @43991 has 15 MA's), (11, 44033), (21, 44165), (22, 44186), (26, 44219), (29, 44255), (33, 44288),

Gene: Thiqqums\_68 Start: 43242, Stop: 43793, Start Num: 4

Candidate Starts for Thiqqums\_68:

(Start: 4 @43242 has 5 MA's), (8, 43332), (14, 43470), (16, 43497), (19, 43506), (25, 43557), (35, 43677),

Gene: TonyStarch\_64 Start: 42827, Stop: 43261, Start Num: 9

Candidate Starts for TonyStarch\_64:

(Start: 9 @42827 has 15 MA's), (11, 42869), (21, 43001), (22, 43022), (26, 43055), (29, 43091), (33, 43124),