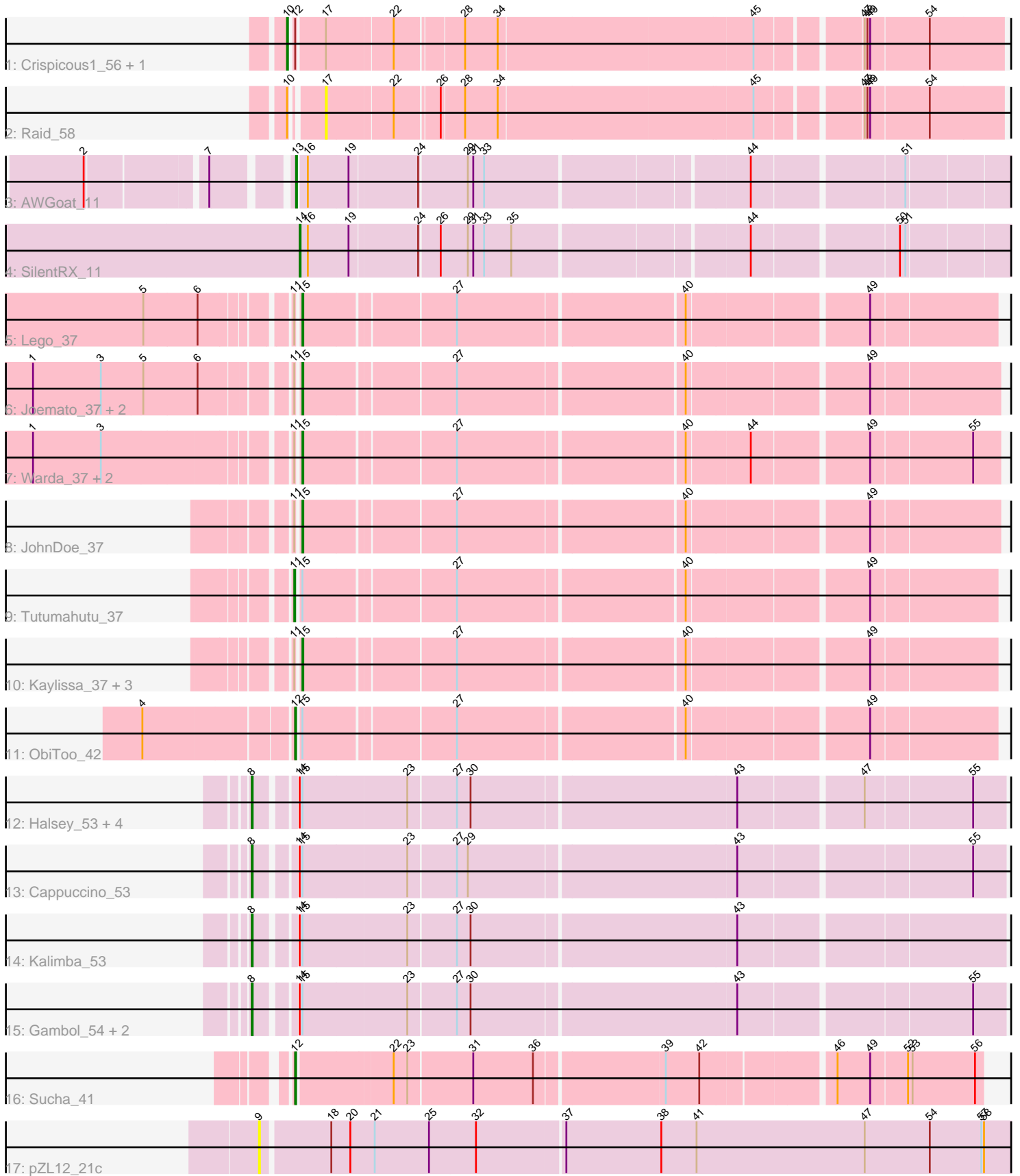


Pham 203172



Note: Tracks are now grouped by subcluster and scaled. Switching in subcluster is indicated by changes in track color. Track scale is now set by default to display the region 30 bp upstream of start 1 to 30 bp downstream of the last possible start. If this default region is judged to be packed too tightly with annotated starts, the track will be further scaled to only show that region of the ORF with annotated starts. This action will be indicated by adding "Zoomed" to the title. For starts, yellow indicates the location of called starts comprised solely of Glimmer/GeneMark auto-annotations, green indicates the location of called starts with at least 1 manual gene annotation.

Pham 203172 Report

This analysis was run 01/18/25 on database version 583.

WARNING: Pham size does not match number of genes in report. Either unphamerated genes have been added (by you) or starterator has removed genes due to invalid start codon.

Pham number 203172 has 31 members, 4 are drafts.

Phages represented in each track:

- Track 1 : Crispicious1_56, CactusRose_57
- Track 2 : Raid_58
- Track 3 : AWGoat_11
- Track 4 : SilentRX_11
- Track 5 : Lego_37
- Track 6 : Joemato_37, Simpson_39, Cyan_37
- Track 7 : Warda_37, Mudpuppy_35, Tbone_36
- Track 8 : JohnDoe_37
- Track 9 : Tutumahutu_37
- Track 10 : Kaylissa_37, AGrandiflora_37, YesChef_37, Powerpuff_39
- Track 11 : ObiToo_42
- Track 12 : Halsey_53, Ashes_53, Moss_53, Mysterium_52, SpecialK_53
- Track 13 : Cappuccino_53
- Track 14 : Kalimba_53
- Track 15 : Gambol_54, Donkey_53, Sooty_53
- Track 16 : Sucha_41
- Track 17 : pZL12_21c

Summary of Final Annotations (See graph section above for start numbers):

The start number called the most often in the published annotations is 15, it was called in 10 of the 27 non-draft genes in the pham.

Genes that call this "Most Annotated" start:

- AGrandiflora_37, Cyan_37, Joemato_37, JohnDoe_37, Kaylissa_37, Lego_37, Mudpuppy_35, Powerpuff_39, Simpson_39, Tbone_36, Warda_37, YesChef_37,

Genes that have the "Most Annotated" start but do not call it:

- Ashes_53, Cappuccino_53, Donkey_53, Gambol_54, Halsey_53, Kalimba_53, Moss_53, Mysterium_52, ObiToo_42, Sooty_53, SpecialK_53, Tutumahutu_37,

Genes that do not have the "Most Annotated" start:

- AWGoat_11, CactusRose_57, Crispicous1_56, Raid_58, SilentRX_11, Sucha_41, pZL12_21c,

Summary by start number:

Start 8:

- Found in 10 of 31 (32.3%) of genes in pham
- Manual Annotations of this start: 10 of 27
- Called 100.0% of time when present
- Phage (with cluster) where this start called: Ashes_53 (AZ5), Cappuccino_53 (AZ5), Donkey_53 (AZ5), Gambol_54 (AZ5), Halsey_53 (AZ5), Kalimba_53 (AZ5), Moss_53 (AZ5), Mysterium_52 (AZ5), Sooty_53 (AZ5), SpecialK_53 (AZ5),

Start 9:

- Found in 1 of 31 (3.2%) of genes in pham
- No Manual Annotations of this start.
- Called 100.0% of time when present
- Phage (with cluster) where this start called: pZL12_21c (singleton),

Start 10:

- Found in 3 of 31 (9.7%) of genes in pham
- Manual Annotations of this start: 2 of 27
- Called 66.7% of time when present
- Phage (with cluster) where this start called: CactusRose_57 (A1), Crispicous1_56 (A1),

Start 11:

- Found in 13 of 31 (41.9%) of genes in pham
- Manual Annotations of this start: 1 of 27
- Called 7.7% of time when present
- Phage (with cluster) where this start called: Tutumahutu_37 (AZ1),

Start 12:

- Found in 4 of 31 (12.9%) of genes in pham
- Manual Annotations of this start: 2 of 27
- Called 50.0% of time when present
- Phage (with cluster) where this start called: ObiToo_42 (AZ1), Sucha_41 (EJ),

Start 13:

- Found in 1 of 31 (3.2%) of genes in pham
- Manual Annotations of this start: 1 of 27
- Called 100.0% of time when present
- Phage (with cluster) where this start called: AWGoat_11 (AP4),

Start 14:

- Found in 11 of 31 (35.5%) of genes in pham
- Manual Annotations of this start: 1 of 27
- Called 9.1% of time when present
- Phage (with cluster) where this start called: SilentRX_11 (AP4),

Start 15:

- Found in 24 of 31 (77.4%) of genes in pham
- Manual Annotations of this start: 10 of 27
- Called 50.0% of time when present
- Phage (with cluster) where this start called: AGrandiflora_37 (AZ1), Cyan_37 (AZ1), Joemato_37 (AZ1), JohnDoe_37 (AZ1), Kaylissa_37 (AZ1), Lego_37 (AZ1), Mudpuppy_35 (AZ1), Powerpuff_39 (AZ1), Simpson_39 (AZ1), Tbone_36 (AZ1), Warda_37 (AZ1), YesChef_37 (AZ1),

Start 17:

- Found in 3 of 31 (9.7%) of genes in pham
- No Manual Annotations of this start.
- Called 33.3% of time when present
- Phage (with cluster) where this start called: Raid_58 (A1),

Summary by clusters:

There are 6 clusters represented in this pham: singleton, EJ, AP4, A1, AZ1, AZ5,

Info for manual annotations of cluster A1:

- Start number 10 was manually annotated 2 times for cluster A1.

Info for manual annotations of cluster AP4:

- Start number 13 was manually annotated 1 time for cluster AP4.
- Start number 14 was manually annotated 1 time for cluster AP4.

Info for manual annotations of cluster AZ1:

- Start number 11 was manually annotated 1 time for cluster AZ1.
- Start number 12 was manually annotated 1 time for cluster AZ1.
- Start number 15 was manually annotated 10 times for cluster AZ1.

Info for manual annotations of cluster AZ5:

- Start number 8 was manually annotated 10 times for cluster AZ5.

Info for manual annotations of cluster EJ:

- Start number 12 was manually annotated 1 time for cluster EJ.

Gene Information:

Gene: AGrandiflora_37 Start: 25933, Stop: 26643, Start Num: 15

Candidate Starts for AGrandiflora_37:

(Start: 11 @25930 has 1 MA's), (Start: 15 @25933 has 10 MA's), (27, 26086), (40, 26323), (49, 26509),

Gene: AWGoat_11 Start: 4286, Stop: 5023, Start Num: 13

Candidate Starts for AWGoat_11:

(2, 4094), (7, 4214), (Start: 13 @4286 has 1 MA's), (16, 4295), (19, 4337), (24, 4409), (29, 4460), (31, 4466), (33, 4478), (44, 4751), (51, 4907),

Gene: Ashes_53 Start: 35916, Stop: 36692, Start Num: 8

Candidate Starts for Ashes_53:

(Start: 8 @35916 has 10 MA's), (Start: 14 @35952 has 1 MA's), (Start: 15 @35955 has 10 MA's), (23, 36066), (27, 36117), (30, 36132), (43, 36414), (47, 36543), (55, 36657),

Gene: CactusRose_57 Start: 40088, Stop: 39360, Start Num: 10

Candidate Starts for CactusRose_57:

(Start: 10 @40088 has 2 MA's), (Start: 12 @40085 has 2 MA's), (17, 40058), (22, 39989), (28, 39920), (34, 39884), (45, 39611), (47, 39509), (48, 39506), (49, 39503), (54, 39440),

Gene: Cappuccino_53 Start: 35772, Stop: 36548, Start Num: 8

Candidate Starts for Cappuccino_53:

(Start: 8 @35772 has 10 MA's), (Start: 14 @35808 has 1 MA's), (Start: 15 @35811 has 10 MA's), (23, 35922), (27, 35973), (29, 35985), (43, 36270), (55, 36513),

Gene: Crispicious1_56 Start: 39141, Stop: 38413, Start Num: 10

Candidate Starts for Crispicious1_56:

(Start: 10 @39141 has 2 MA's), (Start: 12 @39138 has 2 MA's), (17, 39111), (22, 39042), (28, 38973), (34, 38937), (45, 38664), (47, 38562), (48, 38559), (49, 38556), (54, 38493),

Gene: Cyan_37 Start: 25989, Stop: 26702, Start Num: 15

Candidate Starts for Cyan_37:

(1, 25725), (3, 25800), (5, 25845), (6, 25902), (Start: 11 @25986 has 1 MA's), (Start: 15 @25989 has 10 MA's), (27, 26142), (40, 26379), (49, 26565),

Gene: Donkey_53 Start: 35762, Stop: 36538, Start Num: 8

Candidate Starts for Donkey_53:

(Start: 8 @35762 has 10 MA's), (Start: 14 @35798 has 1 MA's), (Start: 15 @35801 has 10 MA's), (23, 35912), (27, 35963), (30, 35978), (43, 36260), (55, 36503),

Gene: Gambol_54 Start: 35781, Stop: 36557, Start Num: 8

Candidate Starts for Gambol_54:

(Start: 8 @35781 has 10 MA's), (Start: 14 @35817 has 1 MA's), (Start: 15 @35820 has 10 MA's), (23, 35931), (27, 35982), (30, 35997), (43, 36279), (55, 36522),

Gene: Halsey_53 Start: 35906, Stop: 36682, Start Num: 8

Candidate Starts for Halsey_53:

(Start: 8 @35906 has 10 MA's), (Start: 14 @35942 has 1 MA's), (Start: 15 @35945 has 10 MA's), (23, 36056), (27, 36107), (30, 36122), (43, 36404), (47, 36533), (55, 36647),

Gene: Joemato_37 Start: 26020, Stop: 26733, Start Num: 15

Candidate Starts for Joemato_37:

(1, 25756), (3, 25831), (5, 25876), (6, 25933), (Start: 11 @26017 has 1 MA's), (Start: 15 @26020 has 10 MA's), (27, 26173), (40, 26410), (49, 26596),

Gene: JohnDoe_37 Start: 26012, Stop: 26725, Start Num: 15

Candidate Starts for JohnDoe_37:

(Start: 11 @26009 has 1 MA's), (Start: 15 @26012 has 10 MA's), (27, 26165), (40, 26402), (49, 26588),

Gene: Kalimba_53 Start: 35759, Stop: 36535, Start Num: 8

Candidate Starts for Kalimba_53:

(Start: 8 @35759 has 10 MA's), (Start: 14 @35795 has 1 MA's), (Start: 15 @35798 has 10 MA's), (23, 35909), (27, 35960), (30, 35975), (43, 36257),

Gene: Kaylissa_37 Start: 25954, Stop: 26664, Start Num: 15

Candidate Starts for Kaylissa_37:

(Start: 11 @25951 has 1 MA's), (Start: 15 @25954 has 10 MA's), (27, 26107), (40, 26344), (49, 26530),

Gene: Lego_37 Start: 25900, Stop: 26610, Start Num: 15

Candidate Starts for Lego_37:

(5, 25759), (6, 25816), (Start: 11 @25897 has 1 MA's), (Start: 15 @25900 has 10 MA's), (27, 26053), (40, 26290), (49, 26476),

Gene: Moss_53 Start: 35847, Stop: 36623, Start Num: 8

Candidate Starts for Moss_53:

(Start: 8 @35847 has 10 MA's), (Start: 14 @35883 has 1 MA's), (Start: 15 @35886 has 10 MA's), (23, 35997), (27, 36048), (30, 36063), (43, 36345), (47, 36474), (55, 36588),

Gene: Mudpuppy_35 Start: 25767, Stop: 26480, Start Num: 15

Candidate Starts for Mudpuppy_35:

(1, 25503), (3, 25578), (Start: 11 @25764 has 1 MA's), (Start: 15 @25767 has 10 MA's), (27, 25920), (40, 26157), (44, 26223), (49, 26343), (55, 26451),

Gene: Mysterium_52 Start: 35694, Stop: 36470, Start Num: 8

Candidate Starts for Mysterium_52:

(Start: 8 @35694 has 10 MA's), (Start: 14 @35730 has 1 MA's), (Start: 15 @35733 has 10 MA's), (23, 35844), (27, 35895), (30, 35910), (43, 36192), (47, 36321), (55, 36435),

Gene: ObiToo_42 Start: 26828, Stop: 27541, Start Num: 12

Candidate Starts for ObiToo_42:

(4, 26675), (Start: 12 @26828 has 2 MA's), (Start: 15 @26831 has 10 MA's), (27, 26984), (40, 27221), (49, 27407),

Gene: Powerpuff_39 Start: 27103, Stop: 27813, Start Num: 15

Candidate Starts for Powerpuff_39:

(Start: 11 @27100 has 1 MA's), (Start: 15 @27103 has 10 MA's), (27, 27256), (40, 27493), (49, 27679),

Gene: Raid_58 Start: 40229, Stop: 39531, Start Num: 17

Candidate Starts for Raid_58:

(Start: 10 @40256 has 2 MA's), (17, 40229), (22, 40160), (26, 40115), (28, 40091), (34, 40055), (45, 39782), (47, 39680), (48, 39677), (49, 39674), (54, 39611),

Gene: SilentRX_11 Start: 3891, Stop: 4628, Start Num: 14

Candidate Starts for SilentRX_11:

(Start: 14 @3891 has 1 MA's), (16, 3900), (19, 3942), (24, 4014), (26, 4035), (29, 4065), (31, 4071), (33, 4083), (35, 4113), (44, 4356), (50, 4506), (51, 4512),

Gene: Simpson_39 Start: 26020, Stop: 26733, Start Num: 15

Candidate Starts for Simpson_39:

(1, 25756), (3, 25831), (5, 25876), (6, 25933), (Start: 11 @26017 has 1 MA's), (Start: 15 @26020 has 10 MA's), (27, 26173), (40, 26410), (49, 26596),

Gene: Sooty_53 Start: 35774, Stop: 36550, Start Num: 8

Candidate Starts for Sooty_53:

(Start: 8 @35774 has 10 MA's), (Start: 14 @35810 has 1 MA's), (Start: 15 @35813 has 10 MA's), (23, 35924), (27, 35975), (30, 35990), (43, 36272), (55, 36515),

Gene: SpecialK_53 Start: 35756, Stop: 36532, Start Num: 8

Candidate Starts for SpecialK_53:

(Start: 8 @35756 has 10 MA's), (Start: 14 @35792 has 1 MA's), (Start: 15 @35795 has 10 MA's), (23, 35906), (27, 35957), (30, 35972), (43, 36254), (47, 36383), (55, 36497),

Gene: Sucha_41 Start: 26232, Stop: 26936, Start Num: 12

Candidate Starts for Sucha_41:

(Start: 12 @26232 has 2 MA's), (22, 26328), (23, 26343), (31, 26412), (36, 26478), (39, 26613), (42, 26649), (46, 26781), (49, 26817), (52, 26856), (53, 26859), (56, 26928),

Gene: Tbone_36 Start: 25815, Stop: 26528, Start Num: 15

Candidate Starts for Tbone_36:

(1, 25551), (3, 25626), (Start: 11 @25812 has 1 MA's), (Start: 15 @25815 has 10 MA's), (27, 25968), (40, 26205), (44, 26271), (49, 26391), (55, 26499),

Gene: Tutumahutu_37 Start: 25982, Stop: 26695, Start Num: 11

Candidate Starts for Tutumahutu_37:

(Start: 11 @25982 has 1 MA's), (Start: 15 @25985 has 10 MA's), (27, 26138), (40, 26375), (49, 26561),

Gene: Warda_37 Start: 25991, Stop: 26704, Start Num: 15

Candidate Starts for Warda_37:

(1, 25727), (3, 25802), (Start: 11 @25988 has 1 MA's), (Start: 15 @25991 has 10 MA's), (27, 26144), (40, 26381), (44, 26447), (49, 26567), (55, 26675),

Gene: YesChef_37 Start: 25962, Stop: 26672, Start Num: 15

Candidate Starts for YesChef_37:

(Start: 11 @25959 has 1 MA's), (Start: 15 @25962 has 10 MA's), (27, 26115), (40, 26352), (49, 26538),

Gene: pZL12_21c Start: 14130, Stop: 13288, Start Num: 9

Candidate Starts for pZL12_21c:

(9, 14130), (18, 14058), (20, 14037), (21, 14010), (25, 13950), (32, 13899), (37, 13806), (38, 13701), (41, 13662), (47, 13476), (54, 13404), (57, 13347), (58, 13344),