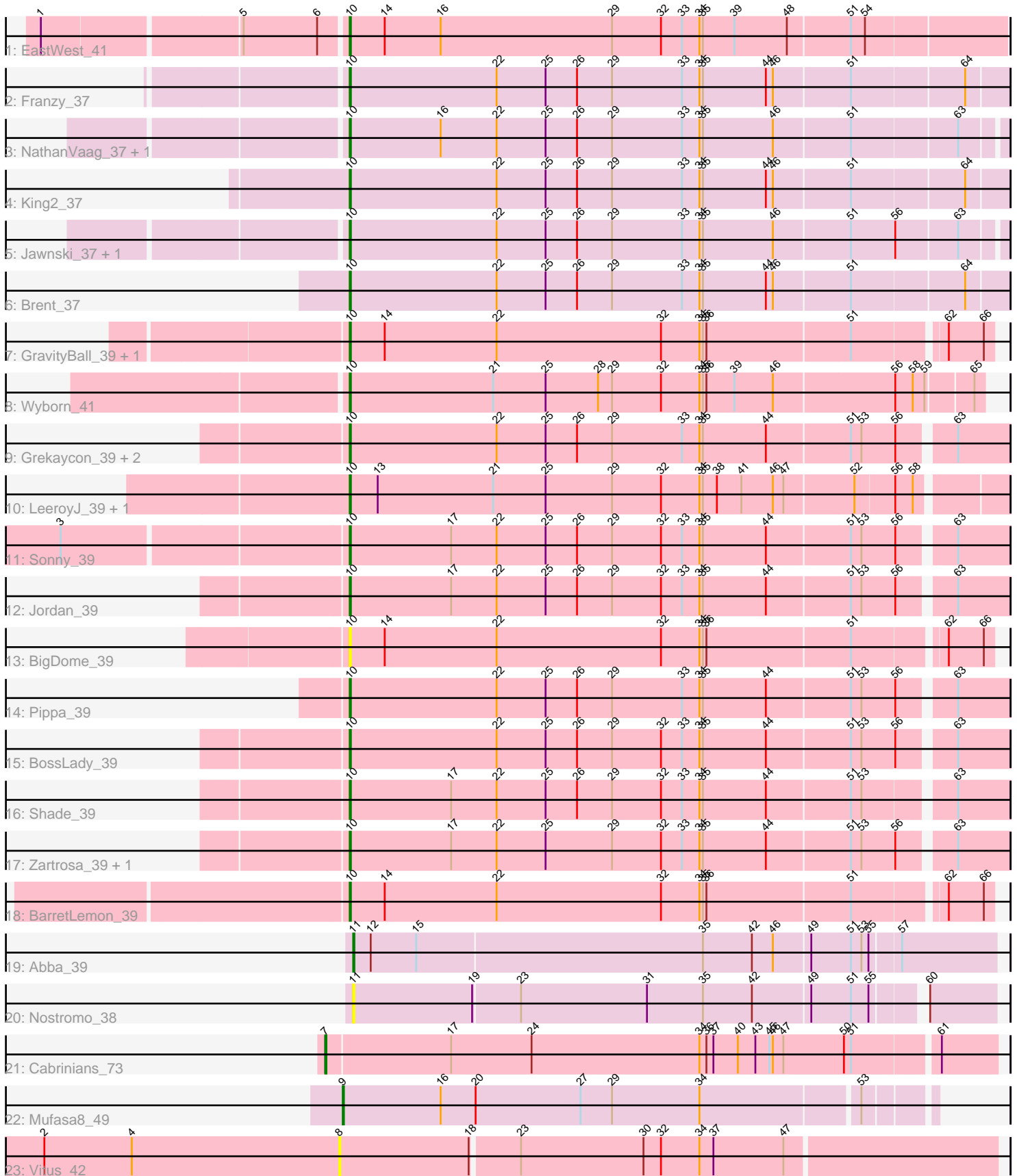


Pham 203191



Note: Tracks are now grouped by subcluster and scaled. Switching in subcluster is indicated by changes in track color. Track scale is now set by default to display the region 30 bp upstream of start 1 to 30 bp downstream of the last possible start. If this default region is judged to be packed too tightly with annotated starts, the track will be further scaled to only show that region of the ORF with annotated starts. This action will be indicated by adding "Zoomed" to the title. For starts, yellow indicates the location of called starts comprised solely of Glimmer/GeneMark auto-annotations, green indicates the location of called starts with at least 1 manual gene annotation.

Pham 203191 Report

This analysis was run 01/18/25 on database version 583.

Pham number 203191 has 30 members, 3 are drafts.

Phages represented in each track:

- Track 1 : EastWest_41
- Track 2 : Franzy_37
- Track 3 : NathanVaag_37, Piccoletto_37
- Track 4 : King2_37
- Track 5 : Jawnski_37, Beans_37
- Track 6 : Brent_37
- Track 7 : GravityBall_39, StevieBAY_39
- Track 8 : Wyborn_41
- Track 9 : Grekaycon_39, Martha_39, TaeYoung_39
- Track 10 : LeeroyJ_39, Timinator_39
- Track 11 : Sonny_39
- Track 12 : Jordan_39
- Track 13 : BigDome_39
- Track 14 : Pippa_39
- Track 15 : BossLady_39
- Track 16 : Shade_39
- Track 17 : Zartrosa_39, JKerns_39
- Track 18 : BarretLemon_39
- Track 19 : Abba_39
- Track 20 : Nostromo_38
- Track 21 : Cabrinians_73
- Track 22 : Mufasa8_49
- Track 23 : Vitus_42

Summary of Final Annotations (See graph section above for start numbers):

The start number called the most often in the published annotations is 10, it was called in 24 of the 27 non-draft genes in the pham.

Genes that call this "Most Annotated" start:

- BarretLemon_39, Beans_37, BigDome_39, BossLady_39, Brent_37, EastWest_41, Franzy_37, GravityBall_39, Grekaycon_39, JKerns_39, Jawnski_37, Jordan_39, King2_37, LeeroyJ_39, Martha_39, NathanVaag_37, Piccoletto_37, Pippa_39, Shade_39, Sonny_39, StevieBAY_39, TaeYoung_39, Timinator_39, Wyborn_41,

Zartrosa_39,

Genes that have the "Most Annotated" start but do not call it:

-

Genes that do not have the "Most Annotated" start:

- Abba_39, Cabrinians_73, Mufasa8_49, Nostromo_38, Vitus_42,

Summary by start number:

Start 7:

- Found in 1 of 30 (3.3%) of genes in pham
- Manual Annotations of this start: 1 of 27
- Called 100.0% of time when present
- Phage (with cluster) where this start called: Cabrinians_73 (F1),

Start 8:

- Found in 1 of 30 (3.3%) of genes in pham
- No Manual Annotations of this start.
- Called 100.0% of time when present
- Phage (with cluster) where this start called: Vitus_42 (FL),

Start 9:

- Found in 1 of 30 (3.3%) of genes in pham
- Manual Annotations of this start: 1 of 27
- Called 100.0% of time when present
- Phage (with cluster) where this start called: Mufasa8_49 (FG),

Start 10:

- Found in 25 of 30 (83.3%) of genes in pham
- Manual Annotations of this start: 24 of 27
- Called 100.0% of time when present
- Phage (with cluster) where this start called: BarretLemon_39 (AO2), Beans_37 (AO1), BigDome_39 (AO2), BossLady_39 (AO2), Brent_37 (AO1), EastWest_41 (AO), Franzy_37 (AO1), GravityBall_39 (AO2), Grekaycon_39 (AO2), JKerns_39 (AO2), Jawnski_37 (AO1), Jordan_39 (AO2), King2_37 (AO1), LeeroyJ_39 (AO2), Martha_39 (AO2), NathanVaag_37 (AO1), Piccoletto_37 (AO1), Pippa_39 (AO2), Shade_39 (AO2), Sonny_39 (AO2), StevieBAY_39 (AO2), TaeYoung_39 (AO2), Timinator_39 (AO2), Wyborn_41 (AO2), Zartrosa_39 (AO2),

Start 11:

- Found in 2 of 30 (6.7%) of genes in pham
- Manual Annotations of this start: 1 of 27
- Called 100.0% of time when present
- Phage (with cluster) where this start called: Abba_39 (AO3), Nostromo_38 (AO3),

Summary by clusters:

There are 7 clusters represented in this pham: F1, AO, AO3, AO2, AO1, FG, FL,

Info for manual annotations of cluster AO:

- Start number 10 was manually annotated 1 time for cluster AO.

Info for manual annotations of cluster AO1:

- Start number 10 was manually annotated 7 times for cluster AO1.

Info for manual annotations of cluster AO2:

- Start number 10 was manually annotated 16 times for cluster AO2.

Info for manual annotations of cluster AO3:

- Start number 11 was manually annotated 1 time for cluster AO3.

Info for manual annotations of cluster F1:

- Start number 7 was manually annotated 1 time for cluster F1.

Info for manual annotations of cluster FG:

- Start number 9 was manually annotated 1 time for cluster FG.

Gene Information:

Gene: Abba_39 Start: 30600, Stop: 31139, Start Num: 11

Candidate Starts for Abba_39:

(Start: 11 @30600 has 1 MA's), (12, 30615), (15, 30654), (35, 30897), (42, 30939), (46, 30957), (49, 30987), (51, 31020), (53, 31029), (55, 31035), (57, 31059),

Gene: BarretLemon_39 Start: 31855, Stop: 32391, Start Num: 10

Candidate Starts for BarretLemon_39:

(Start: 10 @31855 has 24 MA's), (14, 31885), (22, 31981), (32, 32122), (34, 32155), (35, 32158), (36, 32161), (51, 32281), (62, 32353), (66, 32383),

Gene: Beans_37 Start: 31641, Stop: 32189, Start Num: 10

Candidate Starts for Beans_37:

(Start: 10 @31641 has 24 MA's), (22, 31767), (25, 31809), (26, 31836), (29, 31866), (33, 31926), (34, 31941), (35, 31944), (46, 32004), (51, 32067), (56, 32103), (63, 32154),

Gene: BigDome_39 Start: 31861, Stop: 32397, Start Num: 10

Candidate Starts for BigDome_39:

(Start: 10 @31861 has 24 MA's), (14, 31891), (22, 31987), (32, 32128), (34, 32161), (35, 32164), (36, 32167), (51, 32287), (62, 32359), (66, 32389),

Gene: BossLady_39 Start: 31863, Stop: 32411, Start Num: 10

Candidate Starts for BossLady_39:

(Start: 10 @31863 has 24 MA's), (22, 31989), (25, 32031), (26, 32058), (29, 32088), (32, 32130), (33, 32148), (34, 32163), (35, 32166), (44, 32220), (51, 32289), (53, 32298), (56, 32325), (63, 32367),

Gene: Brent_37 Start: 31595, Stop: 32149, Start Num: 10

Candidate Starts for Brent_37:

(Start: 10 @31595 has 24 MA's), (22, 31721), (25, 31763), (26, 31790), (29, 31820), (33, 31880), (34, 31895), (35, 31898), (44, 31952), (46, 31958), (51, 32021), (64, 32114),

Gene: Cabrinians_73 Start: 46340, Stop: 46903, Start Num: 7

Candidate Starts for Cabrinians_73:

(Start: 7 @46340 has 1 MA's), (17, 46445), (24, 46514), (34, 46658), (36, 46664), (37, 46670), (40, 46691), (43, 46706), (45, 46718), (46, 46721), (47, 46730), (50, 46781), (51, 46787), (61, 46856),

Gene: EastWest_41 Start: 31527, Stop: 32081, Start Num: 10

Candidate Starts for EastWest_41:

(1, 31281), (5, 31443), (6, 31506), (Start: 10 @31527 has 24 MA's), (14, 31557), (16, 31605), (29, 31752), (32, 31794), (33, 31812), (34, 31827), (35, 31830), (39, 31857), (48, 31902), (51, 31953), (54, 31965),

Gene: Franzy_37 Start: 31611, Stop: 32165, Start Num: 10

Candidate Starts for Franzy_37:

(Start: 10 @31611 has 24 MA's), (22, 31737), (25, 31779), (26, 31806), (29, 31836), (33, 31896), (34, 31911), (35, 31914), (44, 31968), (46, 31974), (51, 32037), (64, 32130),

Gene: GravityBall_39 Start: 31885, Stop: 32421, Start Num: 10

Candidate Starts for GravityBall_39:

(Start: 10 @31885 has 24 MA's), (14, 31915), (22, 32011), (32, 32152), (34, 32185), (35, 32188), (36, 32191), (51, 32311), (62, 32383), (66, 32413),

Gene: Grekaycon_39 Start: 31809, Stop: 32357, Start Num: 10

Candidate Starts for Grekaycon_39:

(Start: 10 @31809 has 24 MA's), (22, 31935), (25, 31977), (26, 32004), (29, 32034), (33, 32094), (34, 32109), (35, 32112), (44, 32166), (51, 32235), (53, 32244), (56, 32271), (63, 32313),

Gene: JKerns_39 Start: 31869, Stop: 32417, Start Num: 10

Candidate Starts for JKerns_39:

(Start: 10 @31869 has 24 MA's), (17, 31956), (22, 31995), (25, 32037), (29, 32094), (32, 32136), (33, 32154), (34, 32169), (35, 32172), (44, 32226), (51, 32295), (53, 32304), (56, 32331), (63, 32373),

Gene: Jawnski_37 Start: 31599, Stop: 32147, Start Num: 10

Candidate Starts for Jawnski_37:

(Start: 10 @31599 has 24 MA's), (22, 31725), (25, 31767), (26, 31794), (29, 31824), (33, 31884), (34, 31899), (35, 31902), (46, 31962), (51, 32025), (56, 32061), (63, 32112),

Gene: Jordan_39 Start: 31918, Stop: 32466, Start Num: 10

Candidate Starts for Jordan_39:

(Start: 10 @31918 has 24 MA's), (17, 32005), (22, 32044), (25, 32086), (26, 32113), (29, 32143), (32, 32185), (33, 32203), (34, 32218), (35, 32221), (44, 32275), (51, 32344), (53, 32353), (56, 32380), (63, 32422),

Gene: King2_37 Start: 31589, Stop: 32143, Start Num: 10

Candidate Starts for King2_37:

(Start: 10 @31589 has 24 MA's), (22, 31715), (25, 31757), (26, 31784), (29, 31814), (33, 31874), (34, 31889), (35, 31892), (44, 31946), (46, 31952), (51, 32015), (64, 32108),

Gene: LeeroyJ_39 Start: 31877, Stop: 32422, Start Num: 10

Candidate Starts for LeeroyJ_39:

(Start: 10 @31877 has 24 MA's), (13, 31901), (21, 32000), (25, 32045), (29, 32102), (32, 32144), (34, 32177), (35, 32180), (38, 32192), (41, 32213), (46, 32240), (47, 32249), (52, 32306), (56, 32336), (58, 32351),

Gene: Martha_39 Start: 31810, Stop: 32358, Start Num: 10

Candidate Starts for Martha_39:

(Start: 10 @31810 has 24 MA's), (22, 31936), (25, 31978), (26, 32005), (29, 32035), (33, 32095), (34, 32110), (35, 32113), (44, 32167), (51, 32236), (53, 32245), (56, 32272), (63, 32314),

Gene: Mufasa8_49 Start: 36868, Stop: 37356, Start Num: 9

Candidate Starts for Mufasa8_49:

(Start: 9 @36868 has 1 MA's), (16, 36952), (20, 36982), (27, 37072), (29, 37099), (34, 37174), (53, 37303),

Gene: NathanVaag_37 Start: 31617, Stop: 32165, Start Num: 10

Candidate Starts for NathanVaag_37:

(Start: 10 @31617 has 24 MA's), (16, 31695), (22, 31743), (25, 31785), (26, 31812), (29, 31842), (33, 31902), (34, 31917), (35, 31920), (46, 31980), (51, 32043), (63, 32130),

Gene: Nostromo_38 Start: 30676, Stop: 31203, Start Num: 11

Candidate Starts for Nostromo_38:

(Start: 11 @30676 has 1 MA's), (19, 30778), (23, 30817), (31, 30925), (35, 30973), (42, 31015), (49, 31063), (51, 31096), (55, 31111), (60, 31147),

Gene: Piccoletto_37 Start: 31615, Stop: 32163, Start Num: 10

Candidate Starts for Piccoletto_37:

(Start: 10 @31615 has 24 MA's), (16, 31693), (22, 31741), (25, 31783), (26, 31810), (29, 31840), (33, 31900), (34, 31915), (35, 31918), (46, 31978), (51, 32041), (63, 32128),

Gene: Pippa_39 Start: 31965, Stop: 32513, Start Num: 10

Candidate Starts for Pippa_39:

(Start: 10 @31965 has 24 MA's), (22, 32091), (25, 32133), (26, 32160), (29, 32190), (33, 32250), (34, 32265), (35, 32268), (44, 32322), (51, 32391), (53, 32400), (56, 32427), (63, 32469),

Gene: Shade_39 Start: 31892, Stop: 32440, Start Num: 10

Candidate Starts for Shade_39:

(Start: 10 @31892 has 24 MA's), (17, 31979), (22, 32018), (25, 32060), (26, 32087), (29, 32117), (32, 32159), (33, 32177), (34, 32192), (35, 32195), (44, 32249), (51, 32318), (53, 32327), (63, 32396),

Gene: Sonny_39 Start: 31915, Stop: 32463, Start Num: 10

Candidate Starts for Sonny_39:

(3, 31681), (Start: 10 @31915 has 24 MA's), (17, 32002), (22, 32041), (25, 32083), (26, 32110), (29, 32140), (32, 32182), (33, 32200), (34, 32215), (35, 32218), (44, 32272), (51, 32341), (53, 32350), (56, 32377), (63, 32419),

Gene: StevieBAY_39 Start: 31885, Stop: 32421, Start Num: 10

Candidate Starts for StevieBAY_39:

(Start: 10 @31885 has 24 MA's), (14, 31915), (22, 32011), (32, 32152), (34, 32185), (35, 32188), (36, 32191), (51, 32311), (62, 32383), (66, 32413),

Gene: TaeYoung_39 Start: 31810, Stop: 32358, Start Num: 10

Candidate Starts for TaeYoung_39:

(Start: 10 @31810 has 24 MA's), (22, 31936), (25, 31978), (26, 32005), (29, 32035), (33, 32095), (34, 32110), (35, 32113), (44, 32167), (51, 32236), (53, 32245), (56, 32272), (63, 32314),

Gene: Timinator_39 Start: 31877, Stop: 32422, Start Num: 10

Candidate Starts for Timinator_39:

(Start: 10 @31877 has 24 MA's), (13, 31901), (21, 32000), (25, 32045), (29, 32102), (32, 32144), (34, 32177), (35, 32180), (38, 32192), (41, 32213), (46, 32240), (47, 32249), (52, 32306), (56, 32336), (58,

32351),

Gene: Vitus_42 Start: 33109, Stop: 33660, Start Num: 8

Candidate Starts for Vitus_42:

(2, 32857), (4, 32932), (8, 33109), (18, 33220), (23, 33259), (30, 33364), (32, 33379), (34, 33412), (37, 33424), (47, 33484),

Gene: Wyborn_41 Start: 32362, Stop: 32892, Start Num: 10

Candidate Starts for Wyborn_41:

(Start: 10 @32362 has 24 MA's), (21, 32485), (25, 32530), (28, 32575), (29, 32587), (32, 32629), (34, 32662), (35, 32665), (36, 32668), (39, 32692), (46, 32725), (56, 32824), (58, 32839), (59, 32848), (65, 32884),

Gene: Zartrosa_39 Start: 31822, Stop: 32370, Start Num: 10

Candidate Starts for Zartrosa_39:

(Start: 10 @31822 has 24 MA's), (17, 31909), (22, 31948), (25, 31990), (29, 32047), (32, 32089), (33, 32107), (34, 32122), (35, 32125), (44, 32179), (51, 32248), (53, 32257), (56, 32284), (63, 32326),