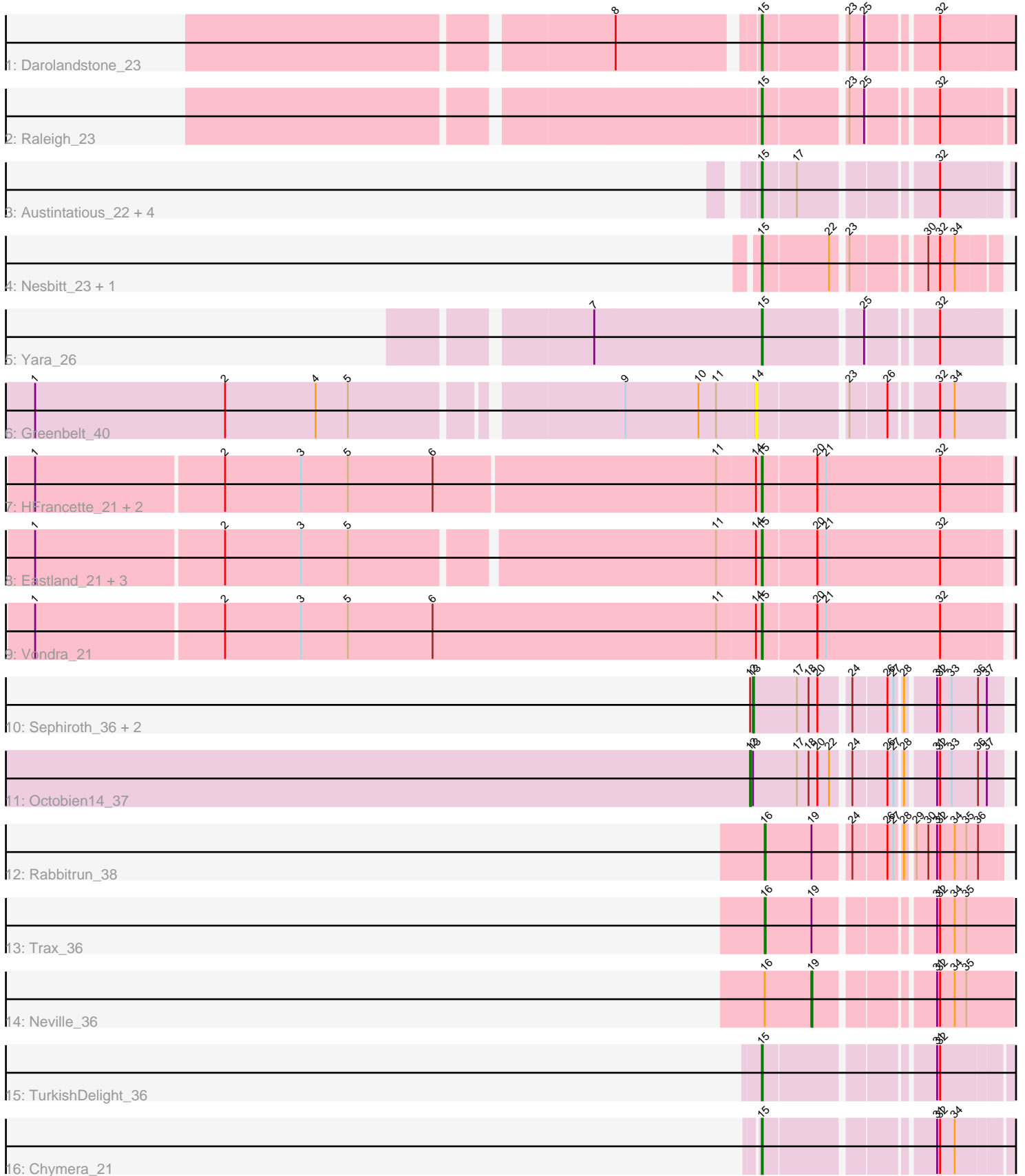


Pham 203212



Note: Tracks are now grouped by subcluster and scaled. Switching in subcluster is indicated by changes in track color. Track scale is now set by default to display the region 30 bp upstream of start 1 to 30 bp downstream of the last possible start. If this default region is judged to be packed too tightly with annotated starts, the track will be further scaled to only show that region of the ORF with annotated starts. This action will be indicated by adding "Zoomed" to the title. For starts, yellow indicates the location of called starts comprised solely of Glimmer/GeneMark auto-annotations, green indicates the location of called starts with at least 1 manual gene annotation.

Pham 203212 Report

This analysis was run 01/18/25 on database version 583.

Pham number 203212 has 28 members, 2 are drafts.

Phages represented in each track:

- Track 1 : Darolandstone_23
- Track 2 : Raleigh_23
- Track 3 : Austintatious_22, Bioscum_22, Ididsumtinwong_22, Lishka_21, PapayaSalad_22
- Track 4 : Nesbitt_23, AbbeyMikolon_23
- Track 5 : Yara_26
- Track 6 : Greenbelt_40
- Track 7 : HFrancette_21, Cumberbatch_21, Ignacio_21
- Track 8 : Eastland_21, AxeJC_21, Eklok_21, Piccadilly_21
- Track 9 : Vondra_21
- Track 10 : Sephiroth_36, Syleon_36, Kudrefre_35
- Track 11 : Octobien14_37
- Track 12 : Rabbitrun_38
- Track 13 : Trax_36
- Track 14 : Neville_36
- Track 15 : TurkishDelight_36
- Track 16 : Chymera_21

Summary of Final Annotations (See graph section above for start numbers):

The start number called the most often in the published annotations is 15, it was called in 19 of the 26 non-draft genes in the pham.

Genes that call this "Most Annotated" start:

- AbbeyMikolon_23, Austintatious_22, AxeJC_21, Bioscum_22, Chymera_21, Cumberbatch_21, Darolandstone_23, Eastland_21, Eklok_21, HFrancette_21, Ididsumtinwong_22, Ignacio_21, Lishka_21, Nesbitt_23, PapayaSalad_22, Piccadilly_21, Raleigh_23, TurkishDelight_36, Vondra_21, Yara_26,

Genes that have the "Most Annotated" start but do not call it:

-

Genes that do not have the "Most Annotated" start:

- Greenbelt_40, Kudrefre_35, Neville_36, Octobien14_37, Rabbitrun_38, Sephiroth_36, Syleon_36, Trax_36,

Summary by start number:

Start 12:

- Found in 4 of 28 (14.3%) of genes in pham
- Manual Annotations of this start: 1 of 26
- Called 25.0% of time when present
- Phage (with cluster) where this start called: Octobien14_37 (DU1),

Start 13:

- Found in 4 of 28 (14.3%) of genes in pham
- Manual Annotations of this start: 3 of 26
- Called 75.0% of time when present
- Phage (with cluster) where this start called: Kudrefre_35 (DU1), Sephiroth_36 (DU1), Syleon_36 (DU1),

Start 14:

- Found in 9 of 28 (32.1%) of genes in pham
- No Manual Annotations of this start.
- Called 11.1% of time when present
- Phage (with cluster) where this start called: Greenbelt_40 (BN),

Start 15:

- Found in 20 of 28 (71.4%) of genes in pham
- Manual Annotations of this start: 19 of 26
- Called 100.0% of time when present
- Phage (with cluster) where this start called: AbbeyMikolon_23 (BL), Austintatious_22 (BC3), AxeJC_21 (BP), Bioscum_22 (BC3), Chymera_21 (singleton), Cumberbatch_21 (BP), Darolandstone_23 (BC2), Eastland_21 (BP), Eklok_21 (BP), HFrancette_21 (BP), Ididsumtinwong_22 (BC3), Ignacio_21 (BP), Lishka_21 (BC3), Nesbitt_23 (BL), PapayaSalad_22 (BC3), Piccadilly_21 (BP), Raleigh_23 (BC2), TurkishDelight_36 (singleton), Vondra_21 (BP), Yara_26 (BN),

Start 16:

- Found in 3 of 28 (10.7%) of genes in pham
- Manual Annotations of this start: 2 of 26
- Called 66.7% of time when present
- Phage (with cluster) where this start called: Rabbitrun_38 (DU2), Trax_36 (DU2),

Start 19:

- Found in 3 of 28 (10.7%) of genes in pham
- Manual Annotations of this start: 1 of 26
- Called 33.3% of time when present
- Phage (with cluster) where this start called: Neville_36 (DU2),

Summary by clusters:

There are 8 clusters represented in this pham: singleton, BL, BN, BP, DU1, DU2, BC2, BC3,

Info for manual annotations of cluster BC2:

- Start number 15 was manually annotated 2 times for cluster BC2.

Info for manual annotations of cluster BC3:

- Start number 15 was manually annotated 4 times for cluster BC3.

Info for manual annotations of cluster BL:

- Start number 15 was manually annotated 2 times for cluster BL.

Info for manual annotations of cluster BN:

- Start number 15 was manually annotated 1 time for cluster BN.

Info for manual annotations of cluster BP:

- Start number 15 was manually annotated 8 times for cluster BP.

Info for manual annotations of cluster DU1:

- Start number 12 was manually annotated 1 time for cluster DU1.
- Start number 13 was manually annotated 3 times for cluster DU1.

Info for manual annotations of cluster DU2:

- Start number 16 was manually annotated 2 times for cluster DU2.
- Start number 19 was manually annotated 1 time for cluster DU2.

Gene Information:

Gene: AbbeyMikolon_23 Start: 18386, Stop: 18598, Start Num: 15

Candidate Starts for AbbeyMikolon_23:

(Start: 15 @18386 has 19 MA's), (22, 18452), (23, 18464), (30, 18530), (32, 18542), (34, 18557),

Gene: Austintatious_22 Start: 17098, Stop: 17331, Start Num: 15

Candidate Starts for Austintatious_22:

(Start: 15 @17098 has 19 MA's), (17, 17131), (32, 17254),

Gene: AxeJC_21 Start: 17926, Stop: 18183, Start Num: 15

Candidate Starts for AxeJC_21:

(1, 17209), (2, 17398), (3, 17476), (5, 17524), (11, 17881), (14, 17920), (Start: 15 @17926 has 19 MA's), (20, 17980), (21, 17989), (32, 18106),

Gene: Bioscum_22 Start: 17134, Stop: 17367, Start Num: 15

Candidate Starts for Bioscum_22:

(Start: 15 @17134 has 19 MA's), (17, 17167), (32, 17290),

Gene: Chymera_21 Start: 17166, Stop: 17393, Start Num: 15

Candidate Starts for Chymera_21:

(Start: 15 @17166 has 19 MA's), (31, 17319), (32, 17322), (34, 17337),

Gene: Cumberbatch_21 Start: 17942, Stop: 18202, Start Num: 15

Candidate Starts for Cumberbatch_21:

(1, 17210), (2, 17399), (3, 17477), (5, 17525), (6, 17612), (11, 17897), (14, 17936), (Start: 15 @17942 has 19 MA's), (20, 17996), (21, 18005), (32, 18122),

Gene: Darolandstone_23 Start: 19517, Stop: 19762, Start Num: 15

Candidate Starts for Darolandstone_23:

(8, 19388), (Start: 15 @19517 has 19 MA's), (23, 19595), (25, 19610), (32, 19673),

Gene: Eastland_21 Start: 17911, Stop: 18168, Start Num: 15

Candidate Starts for Eastland_21:

(1, 17194), (2, 17383), (3, 17461), (5, 17509), (11, 17866), (14, 17905), (Start: 15 @17911 has 19 MA's), (20, 17965), (21, 17974), (32, 18091),

Gene: Eklok_21 Start: 17926, Stop: 18183, Start Num: 15

Candidate Starts for Eklok_21:

(1, 17209), (2, 17398), (3, 17476), (5, 17524), (11, 17881), (14, 17920), (Start: 15 @17926 has 19 MA's), (20, 17980), (21, 17989), (32, 18106),

Gene: Greenbelt_40 Start: 20069, Stop: 20296, Start Num: 14

Candidate Starts for Greenbelt_40:

(1, 19364), (2, 19559), (4, 19652), (5, 19685), (9, 19937), (10, 20012), (11, 20030), (14, 20069), (23, 20153), (26, 20189), (32, 20231), (34, 20246),

Gene: HFrancette_21 Start: 17957, Stop: 18214, Start Num: 15

Candidate Starts for HFrancette_21:

(1, 17225), (2, 17414), (3, 17492), (5, 17540), (6, 17627), (11, 17912), (14, 17951), (Start: 15 @17957 has 19 MA's), (20, 18011), (21, 18020), (32, 18137),

Gene: Ididsumtinwong_22 Start: 17134, Stop: 17367, Start Num: 15

Candidate Starts for Ididsumtinwong_22:

(Start: 15 @17134 has 19 MA's), (17, 17167), (32, 17290),

Gene: Ignacio_21 Start: 17957, Stop: 18214, Start Num: 15

Candidate Starts for Ignacio_21:

(1, 17225), (2, 17414), (3, 17492), (5, 17540), (6, 17627), (11, 17912), (14, 17951), (Start: 15 @17957 has 19 MA's), (20, 18011), (21, 18020), (32, 18137),

Gene: Kudrefre_35 Start: 29727, Stop: 29957, Start Num: 13

Candidate Starts for Kudrefre_35:

(Start: 12 @29724 has 1 MA's), (Start: 13 @29727 has 3 MA's), (17, 29772), (18, 29784), (20, 29793), (24, 29820), (26, 29853), (27, 29859), (28, 29865), (31, 29892), (32, 29895), (33, 29907), (36, 29934), (37, 29943),

Gene: Lishka_21 Start: 17098, Stop: 17331, Start Num: 15

Candidate Starts for Lishka_21:

(Start: 15 @17098 has 19 MA's), (17, 17131), (32, 17254),

Gene: Nesbitt_23 Start: 18458, Stop: 18670, Start Num: 15

Candidate Starts for Nesbitt_23:

(Start: 15 @18458 has 19 MA's), (22, 18524), (23, 18536), (30, 18602), (32, 18614), (34, 18629),

Gene: Neville_36 Start: 31076, Stop: 31258, Start Num: 19

Candidate Starts for Neville_36:

(Start: 16 @31028 has 2 MA's), (Start: 19 @31076 has 1 MA's), (31, 31181), (32, 31184), (34, 31199), (35, 31211),

Gene: Octobien14_37 Start: 30411, Stop: 30644, Start Num: 12

Candidate Starts for Octobien14_37:

(Start: 12 @30411 has 1 MA's), (Start: 13 @30414 has 3 MA's), (17, 30459), (18, 30471), (20, 30480), (22, 30492), (24, 30507), (26, 30540), (27, 30546), (28, 30552), (31, 30579), (32, 30582), (33, 30594), (36, 30621), (37, 30630),

Gene: PapayaSalad_22 Start: 17109, Stop: 17342, Start Num: 15

Candidate Starts for PapayaSalad_22:

(Start: 15 @17109 has 19 MA's), (17, 17142), (32, 17265),

Gene: Piccadilly_21 Start: 17910, Stop: 18167, Start Num: 15

Candidate Starts for Piccadilly_21:

(1, 17193), (2, 17382), (3, 17460), (5, 17508), (11, 17865), (14, 17904), (Start: 15 @17910 has 19 MA's), (20, 17964), (21, 17973), (32, 18090),

Gene: Rabbitrun_38 Start: 31471, Stop: 31689, Start Num: 16

Candidate Starts for Rabbitrun_38:

(Start: 16 @31471 has 2 MA's), (Start: 19 @31519 has 1 MA's), (24, 31552), (26, 31585), (27, 31591), (28, 31597), (29, 31603), (30, 31615), (31, 31624), (32, 31627), (34, 31642), (35, 31654), (36, 31666),

Gene: Raleigh_23 Start: 19748, Stop: 19987, Start Num: 15

Candidate Starts for Raleigh_23:

(Start: 15 @19748 has 19 MA's), (23, 19826), (25, 19841), (32, 19904),

Gene: Sephiroth_36 Start: 29898, Stop: 30128, Start Num: 13

Candidate Starts for Sephiroth_36:

(Start: 12 @29895 has 1 MA's), (Start: 13 @29898 has 3 MA's), (17, 29943), (18, 29955), (20, 29964), (24, 29991), (26, 30024), (27, 30030), (28, 30036), (31, 30063), (32, 30066), (33, 30078), (36, 30105), (37, 30114),

Gene: Syleon_36 Start: 29820, Stop: 30050, Start Num: 13

Candidate Starts for Syleon_36:

(Start: 12 @29817 has 1 MA's), (Start: 13 @29820 has 3 MA's), (17, 29865), (18, 29877), (20, 29886), (24, 29913), (26, 29946), (27, 29952), (28, 29958), (31, 29985), (32, 29988), (33, 30000), (36, 30027), (37, 30036),

Gene: Trax_36 Start: 31334, Stop: 31564, Start Num: 16

Candidate Starts for Trax_36:

(Start: 16 @31334 has 2 MA's), (Start: 19 @31382 has 1 MA's), (31, 31487), (32, 31490), (34, 31505), (35, 31517),

Gene: TurkishDelight_36 Start: 34260, Stop: 34487, Start Num: 15

Candidate Starts for TurkishDelight_36:

(Start: 15 @34260 has 19 MA's), (31, 34413), (32, 34416),

Gene: Vondra_21 Start: 17962, Stop: 18219, Start Num: 15

Candidate Starts for Vondra_21:

(1, 17224), (2, 17413), (3, 17491), (5, 17539), (6, 17626), (11, 17917), (14, 17956), (Start: 15 @17962 has 19 MA's), (20, 18016), (21, 18025), (32, 18142),

Gene: Yara_26 Start: 20240, Stop: 20461, Start Num: 15

Candidate Starts for Yara_26:

(7, 20069), (Start: 15 @20240 has 19 MA's), (25, 20336), (32, 20399),