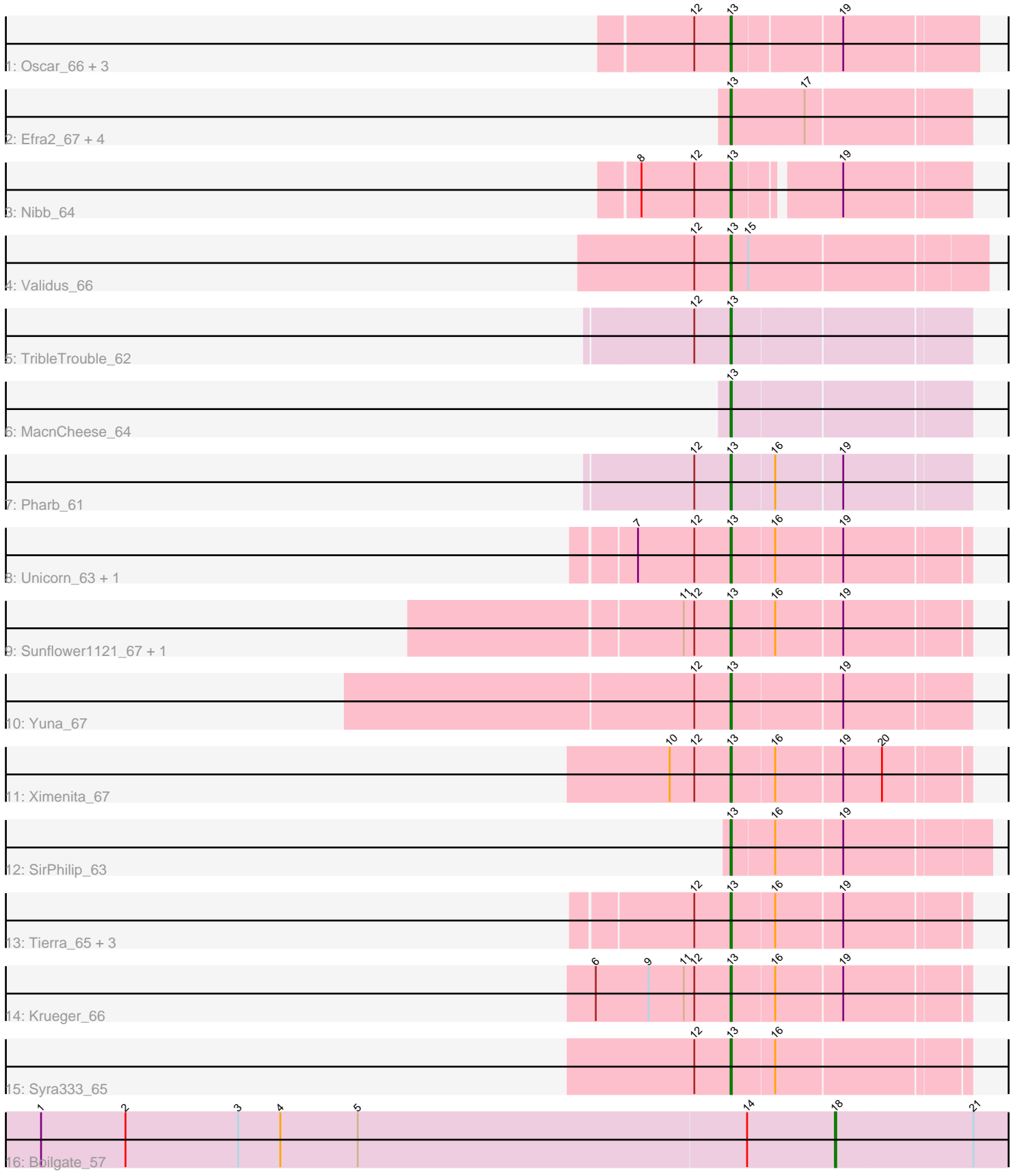


Pham 203213



Note: Tracks are now grouped by subcluster and scaled. Switching in subcluster is indicated by changes in track color. Track scale is now set by default to display the region 30 bp upstream of start 1 to 30 bp downstream of the last possible start. If this default region is judged to be packed too tightly with annotated starts, the track will be further scaled to only show that region of the ORF with annotated starts. This action will be indicated by adding "Zoomed" to the title. For starts, yellow indicates the location of called starts comprised solely of Glimmer/GeneMark auto-annotations, green indicates the location of called starts with at least 1 manual gene annotation.

Pham 203213 Report

This analysis was run 01/18/25 on database version 583.

Pham number 203213 has 28 members, 1 are drafts.

Phages represented in each track:

- Track 1 : Oscar_66, KiSi_67, LeMond_66, Scarlett_67
- Track 2 : Efra2_67, TingHuaYa_65, Guanica15_66, Yunkel11_66, LastHope_66
- Track 3 : Nibb_64
- Track 4 : Validus_66
- Track 5 : TribleTrouble_62
- Track 6 : MacnCheese_64
- Track 7 : Pharb_61
- Track 8 : Unicorn_63, PhelpsODU_63
- Track 9 : Sunflower1121_67, Shadow1_66
- Track 10 : Yuna_67
- Track 11 : Ximenita_67
- Track 12 : SirPhilip_63
- Track 13 : Tierra_65, Cain_65, Phrank_65, Bryler_65
- Track 14 : Krueger_66
- Track 15 : Syra333_65
- Track 16 : Boilgate_57

Summary of Final Annotations (See graph section above for start numbers):

The start number called the most often in the published annotations is 13, it was called in 26 of the 27 non-draft genes in the pham.

Genes that call this "Most Annotated" start:

- Bryler_65, Cain_65, Efra2_67, Guanica15_66, KiSi_67, Krueger_66, LastHope_66, LeMond_66, MacnCheese_64, Nibb_64, Oscar_66, Pharb_61, PhelpsODU_63, Phrank_65, Scarlett_67, Shadow1_66, SirPhilip_63, Sunflower1121_67, Syra333_65, Tierra_65, TingHuaYa_65, TribleTrouble_62, Unicorn_63, Validus_66, Ximenita_67, Yuna_67, Yunkel11_66,

Genes that have the "Most Annotated" start but do not call it:

-

Genes that do not have the "Most Annotated" start:

- Boilgate_57,

Summary by start number:

Start 13:

- Found in 27 of 28 (96.4%) of genes in pham
- Manual Annotations of this start: 26 of 27
- Called 100.0% of time when present
- Phage (with cluster) where this start called: Bryler_65 (K6), Cain_65 (K6), Efra2_67 (K1), Guanica15_66 (K1), KiSi_67 (K1), Krueger_66 (K6), LastHope_66 (K1), LeMond_66 (K1), MacnCheese_64 (K3), Nibb_64 (K1), Oscar_66 (K1), Pharb_61 (K3), PhelpsODU_63 (K6), Phrank_65 (K6), Scarlett_67 (K1), Shadow1_66 (K6), SirPhilip_63 (K6), Sunflower1121_67 (K6), Syra333_65 (K6), Tierra_65 (K6), TingHuaYa_65 (K1), TribbleTrouble_62 (K3), Unicorn_63 (K6), Validus_66 (K1), Ximenita_67 (K6), Yuna_67 (K6), Yunkel11_66 (K1),

Start 18:

- Found in 1 of 28 (3.6%) of genes in pham
- Manual Annotations of this start: 1 of 27
- Called 100.0% of time when present
- Phage (with cluster) where this start called: Boilgate_57 (K8),

Summary by clusters:

There are 4 clusters represented in this pham: K3, K1, K8, K6,

Info for manual annotations of cluster K1:

- Start number 13 was manually annotated 10 times for cluster K1.

Info for manual annotations of cluster K3:

- Start number 13 was manually annotated 3 times for cluster K3.

Info for manual annotations of cluster K6:

- Start number 13 was manually annotated 13 times for cluster K6.

Info for manual annotations of cluster K8:

- Start number 18 was manually annotated 1 time for cluster K8.

Gene Information:

Gene: Boilgate_57 Start: 41471, Stop: 41644, Start Num: 18

Candidate Starts for Boilgate_57:

(1, 40796), (2, 40868), (3, 40964), (4, 41000), (5, 41066), (14, 41396), (Start: 18 @41471 has 1 MA's), (21, 41588),

Gene: Bryler_65 Start: 41993, Stop: 42184, Start Num: 13

Candidate Starts for Bryler_65:

(12, 41963), (Start: 13 @41993 has 26 MA's), (16, 42029), (19, 42083),

Gene: Cain_65 Start: 41981, Stop: 42172, Start Num: 13

Candidate Starts for Cain_65:

(12, 41951), (Start: 13 @41981 has 26 MA's), (16, 42017), (19, 42071),

Gene: Efra2_67 Start: 42478, Stop: 42672, Start Num: 13

Candidate Starts for Efra2_67:

(Start: 13 @42478 has 26 MA's), (17, 42538),

Gene: Guanica15_66 Start: 42219, Stop: 42413, Start Num: 13

Candidate Starts for Guanica15_66:

(Start: 13 @42219 has 26 MA's), (17, 42279),

Gene: KiSi_67 Start: 43442, Stop: 43639, Start Num: 13

Candidate Starts for KiSi_67:

(12, 43412), (Start: 13 @43442 has 26 MA's), (19, 43529),

Gene: Krueger_66 Start: 42279, Stop: 42470, Start Num: 13

Candidate Starts for Krueger_66:

(6, 42165), (9, 42210), (11, 42240), (12, 42249), (Start: 13 @42279 has 26 MA's), (16, 42315), (19, 42369),

Gene: LastHope_66 Start: 41540, Stop: 41734, Start Num: 13

Candidate Starts for LastHope_66:

(Start: 13 @41540 has 26 MA's), (17, 41600),

Gene: LeMond_66 Start: 43076, Stop: 43273, Start Num: 13

Candidate Starts for LeMond_66:

(12, 43046), (Start: 13 @43076 has 26 MA's), (19, 43163),

Gene: MacnCheese_64 Start: 43048, Stop: 43242, Start Num: 13

Candidate Starts for MacnCheese_64:

(Start: 13 @43048 has 26 MA's),

Gene: Nibb_64 Start: 42433, Stop: 42618, Start Num: 13

Candidate Starts for Nibb_64:

(8, 42358), (12, 42403), (Start: 13 @42433 has 26 MA's), (19, 42514),

Gene: Oscar_66 Start: 42993, Stop: 43190, Start Num: 13

Candidate Starts for Oscar_66:

(12, 42963), (Start: 13 @42993 has 26 MA's), (19, 43080),

Gene: Pharb_61 Start: 41781, Stop: 41975, Start Num: 13

Candidate Starts for Pharb_61:

(12, 41751), (Start: 13 @41781 has 26 MA's), (16, 41817), (19, 41871),

Gene: PhelpsODU_63 Start: 41907, Stop: 42098, Start Num: 13

Candidate Starts for PhelpsODU_63:

(7, 41829), (12, 41877), (Start: 13 @41907 has 26 MA's), (16, 41943), (19, 41997),

Gene: Phrank_65 Start: 41971, Stop: 42162, Start Num: 13

Candidate Starts for Phrank_65:

(12, 41941), (Start: 13 @41971 has 26 MA's), (16, 42007), (19, 42061),

Gene: Scarlett_67 Start: 43320, Stop: 43517, Start Num: 13

Candidate Starts for Scarlett_67:

(12, 43290), (Start: 13 @43320 has 26 MA's), (19, 43407),

Gene: Shadow1_66 Start: 42432, Stop: 42623, Start Num: 13
Candidate Starts for Shadow1_66:
(11, 42393), (12, 42402), (Start: 13 @42432 has 26 MA's), (16, 42468), (19, 42522),

Gene: SirPhilip_63 Start: 43069, Stop: 43278, Start Num: 13
Candidate Starts for SirPhilip_63:
(Start: 13 @43069 has 26 MA's), (16, 43105), (19, 43159),

Gene: Sunflower1121_67 Start: 42578, Stop: 42769, Start Num: 13
Candidate Starts for Sunflower1121_67:
(11, 42539), (12, 42548), (Start: 13 @42578 has 26 MA's), (16, 42614), (19, 42668),

Gene: Syra333_65 Start: 42291, Stop: 42482, Start Num: 13
Candidate Starts for Syra333_65:
(12, 42261), (Start: 13 @42291 has 26 MA's), (16, 42327),

Gene: Tierra_65 Start: 42782, Stop: 42973, Start Num: 13
Candidate Starts for Tierra_65:
(12, 42752), (Start: 13 @42782 has 26 MA's), (16, 42818), (19, 42872),

Gene: TingHuaYa_65 Start: 41708, Stop: 41902, Start Num: 13
Candidate Starts for TingHuaYa_65:
(Start: 13 @41708 has 26 MA's), (17, 41768),

Gene: TribbleTrouble_62 Start: 42947, Stop: 43141, Start Num: 13
Candidate Starts for TribbleTrouble_62:
(12, 42917), (Start: 13 @42947 has 26 MA's),

Gene: Unicorn_63 Start: 41907, Stop: 42098, Start Num: 13
Candidate Starts for Unicorn_63:
(7, 41829), (12, 41877), (Start: 13 @41907 has 26 MA's), (16, 41943), (19, 41997),

Gene: Validus_66 Start: 42988, Stop: 43194, Start Num: 13
Candidate Starts for Validus_66:
(12, 42958), (Start: 13 @42988 has 26 MA's), (15, 43003),

Gene: Ximenita_67 Start: 42617, Stop: 42808, Start Num: 13
Candidate Starts for Ximenita_67:
(10, 42566), (12, 42587), (Start: 13 @42617 has 26 MA's), (16, 42653), (19, 42707), (20, 42740),

Gene: Yuna_67 Start: 43685, Stop: 43879, Start Num: 13
Candidate Starts for Yuna_67:
(12, 43655), (Start: 13 @43685 has 26 MA's), (19, 43775),

Gene: Yunkel11_66 Start: 42224, Stop: 42418, Start Num: 13
Candidate Starts for Yunkel11_66:
(Start: 13 @42224 has 26 MA's), (17, 42284),