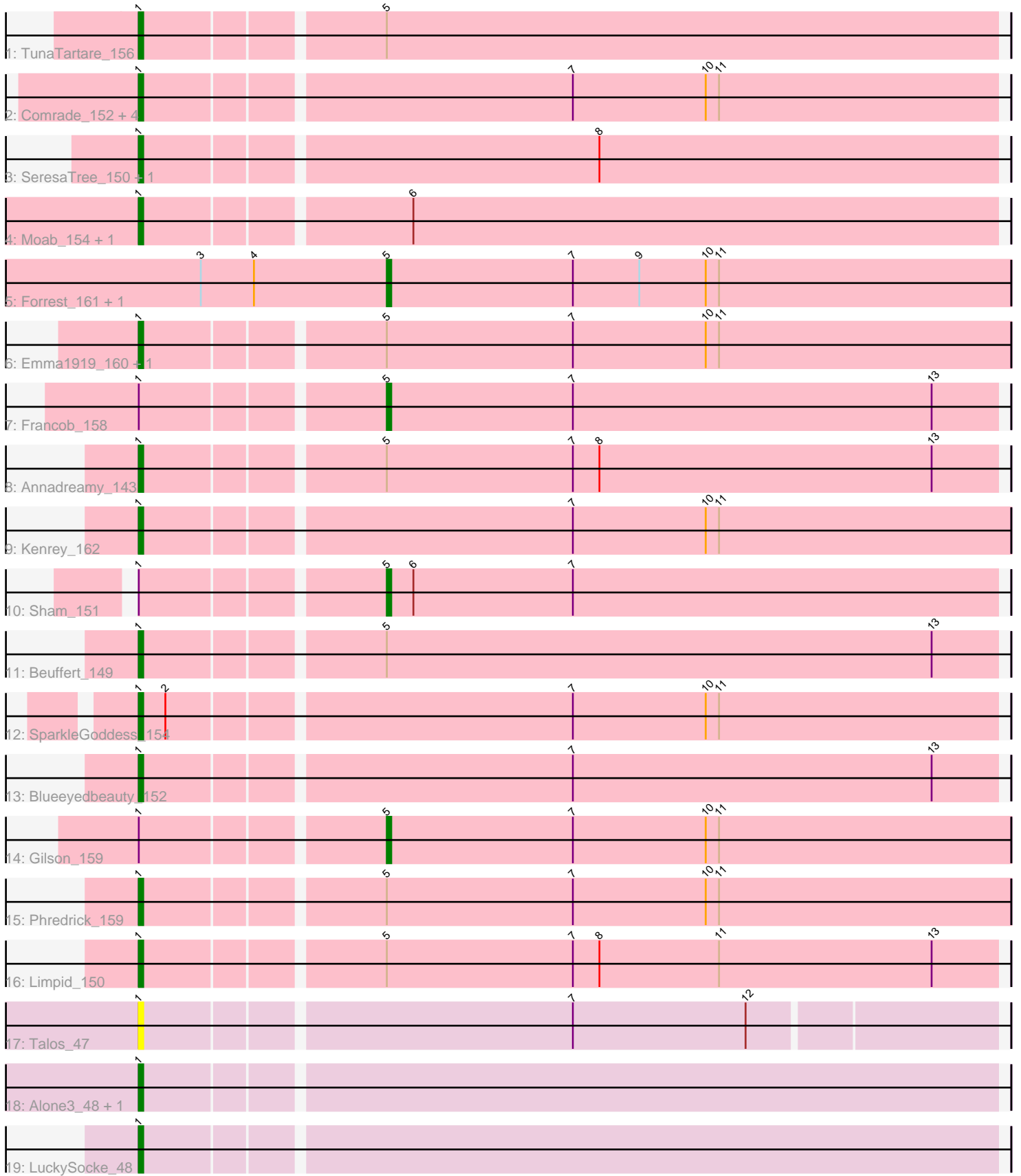


Pham 203214



Note: Tracks are now grouped by subcluster and scaled. Switching in subcluster is indicated by changes in track color. Track scale is now set by default to display the region 30 bp upstream of start 1 to 30 bp downstream of the last possible start. If this default region is judged to be packed too tightly with annotated starts, the track will be further scaled to only show that region of the ORF with annotated starts. This action will be indicated by adding "Zoomed" to the title. For starts, yellow indicates the location of called starts comprised solely of Glimmer/GeneMark auto-annotations, green indicates the location of called starts with at least 1 manual gene annotation.

Pham 203214 Report

This analysis was run 01/18/25 on database version 583.

Pham number 203214 has 28 members, 4 are drafts.

Phages represented in each track:

- Track 1 : TunaTartare_156
- Track 2 : Comrade_152, Westy_156, Karp_149, Belfort_155, Stigma_153
- Track 3 : SeresaTree_150, Faust_149
- Track 4 : Moab_154, Patelgo_156
- Track 5 : Forrest_161, Jada_158
- Track 6 : Emma1919_160, MeganTheeKilla_157
- Track 7 : Francob_158
- Track 8 : Annadreamy_143
- Track 9 : Kenrey_162
- Track 10 : Sham_151
- Track 11 : Beuffert_149
- Track 12 : SparkleGoddess_154
- Track 13 : Blueeyedbeauty_152
- Track 14 : Gilson_159
- Track 15 : Phredrick_159
- Track 16 : Limpid_150
- Track 17 : Talos_47
- Track 18 : Alone3_48, Beleetus_48
- Track 19 : LuckySocke_48

Summary of Final Annotations (See graph section above for start numbers):

The start number called the most often in the published annotations is 1, it was called in 19 of the 24 non-draft genes in the pham.

Genes that call this "Most Annotated" start:

- Alone3_48, Annadreamy_143, Beleetus_48, Belfort_155, Beuffert_149, Blueeyedbeauty_152, Comrade_152, Emma1919_160, Faust_149, Karp_149, Kenrey_162, Limpid_150, LuckySocke_48, MeganTheeKilla_157, Moab_154, Patelgo_156, Phredrick_159, SeresaTree_150, SparkleGoddess_154, Stigma_153, Talos_47, TunaTartare_156, Westy_156,

Genes that have the "Most Annotated" start but do not call it:

- Francob_158, Gilson_159, Sham_151,

Genes that do not have the "Most Annotated" start:

- Forrest_161, Jada_158,

Summary by start number:

Start 1:

- Found in 26 of 28 (92.9%) of genes in pham
- Manual Annotations of this start: 19 of 24
- Called 88.5% of time when present
- Phage (with cluster) where this start called: Alone3_48 (BS), Annadreamy_143 (BK1), Beleetus_48 (BS), Belfort_155 (BK1), Beuffert_149 (BK1), Blueeyedbeauty_152 (BK1), Comrade_152 (BK1), Emma1919_160 (BK1), Faust_149 (BK1), Karp_149 (BK1), Kenrey_162 (BK1), Limpid_150 (BK1), LuckySocke_48 (BS), MeganTheeKilla_157 (BK1), Moab_154 (BK1), Patelgo_156 (BK1), Phredrick_159 (BK1), SeresaTree_150 (BK1), SparkleGoddess_154 (BK1), Stigma_153 (BK1), Talos_47 (BS), TunaTartare_156 (BK1), Westy_156 (BK1),

Start 5:

- Found in 12 of 28 (42.9%) of genes in pham
- Manual Annotations of this start: 5 of 24
- Called 41.7% of time when present
- Phage (with cluster) where this start called: Forrest_161 (BK1), Francob_158 (BK1), Gilson_159 (BK1), Jada_158 (BK1), Sham_151 (BK1),

Summary by clusters:

There are 2 clusters represented in this pham: BK1, BS,

Info for manual annotations of cluster BK1:

- Start number 1 was manually annotated 17 times for cluster BK1.
- Start number 5 was manually annotated 5 times for cluster BK1.

Info for manual annotations of cluster BS:

- Start number 1 was manually annotated 2 times for cluster BS.

Gene Information:

Gene: Alone3_48 Start: 17329, Stop: 17517, Start Num: 1

Candidate Starts for Alone3_48:

(Start: 1 @17329 has 19 MA's),

Gene: Annadreamy_143 Start: 79981, Stop: 80169, Start Num: 1

Candidate Starts for Annadreamy_143:

(Start: 1 @79981 has 19 MA's), (Start: 5 @80032 has 5 MA's), (7, 80074), (8, 80080), (13, 80155),

Gene: Beleetus_48 Start: 17200, Stop: 17388, Start Num: 1

Candidate Starts for Beleetus_48:

(Start: 1 @17200 has 19 MA's),

Gene: Belfort_155 Start: 85819, Stop: 86007, Start Num: 1

Candidate Starts for Belfort_155:

(Start: 1 @85819 has 19 MA's), (7, 85912), (10, 85942), (11, 85945),

Gene: Beuffert_149 Start: 84524, Stop: 84712, Start Num: 1

Candidate Starts for Beuffert_149:

(Start: 1 @84524 has 19 MA's), (Start: 5 @84575 has 5 MA's), (13, 84698),

Gene: Blueeyedbeauty_152 Start: 84403, Stop: 84591, Start Num: 1

Candidate Starts for Blueeyedbeauty_152:

(Start: 1 @84403 has 19 MA's), (7, 84496), (13, 84577),

Gene: Comrade_152 Start: 86021, Stop: 86209, Start Num: 1

Candidate Starts for Comrade_152:

(Start: 1 @86021 has 19 MA's), (7, 86114), (10, 86144), (11, 86147),

Gene: Emma1919_160 Start: 85406, Stop: 85597, Start Num: 1

Candidate Starts for Emma1919_160:

(Start: 1 @85406 has 19 MA's), (Start: 5 @85457 has 5 MA's), (7, 85499), (10, 85529), (11, 85532),

Gene: Faust_149 Start: 85557, Stop: 85745, Start Num: 1

Candidate Starts for Faust_149:

(Start: 1 @85557 has 19 MA's), (8, 85656),

Gene: Forrest_161 Start: 86440, Stop: 86580, Start Num: 5

Candidate Starts for Forrest_161:

(3, 86398), (4, 86410), (Start: 5 @86440 has 5 MA's), (7, 86482), (9, 86497), (10, 86512), (11, 86515),

Gene: Francob_158 Start: 85977, Stop: 86114, Start Num: 5

Candidate Starts for Francob_158:

(Start: 1 @85926 has 19 MA's), (Start: 5 @85977 has 5 MA's), (7, 86019), (13, 86100),

Gene: Gilson_159 Start: 85419, Stop: 85559, Start Num: 5

Candidate Starts for Gilson_159:

(Start: 1 @85368 has 19 MA's), (Start: 5 @85419 has 5 MA's), (7, 85461), (10, 85491), (11, 85494),

Gene: Jada_158 Start: 85137, Stop: 85277, Start Num: 5

Candidate Starts for Jada_158:

(3, 85095), (4, 85107), (Start: 5 @85137 has 5 MA's), (7, 85179), (9, 85194), (10, 85209), (11, 85212),

Gene: Karp_149 Start: 85245, Stop: 85433, Start Num: 1

Candidate Starts for Karp_149:

(Start: 1 @85245 has 19 MA's), (7, 85338), (10, 85368), (11, 85371),

Gene: Kenrey_162 Start: 86531, Stop: 86722, Start Num: 1

Candidate Starts for Kenrey_162:

(Start: 1 @86531 has 19 MA's), (7, 86624), (10, 86654), (11, 86657),

Gene: Limpid_150 Start: 85289, Stop: 85477, Start Num: 1

Candidate Starts for Limpid_150:

(Start: 1 @85289 has 19 MA's), (Start: 5 @85340 has 5 MA's), (7, 85382), (8, 85388), (11, 85415), (13, 85463),

Gene: LuckySocke_48 Start: 17150, Stop: 17338, Start Num: 1

Candidate Starts for LuckySocke_48:

(Start: 1 @17150 has 19 MA's),

Gene: MeganTheeKilla_157 Start: 84992, Stop: 85183, Start Num: 1

Candidate Starts for MeganTheeKilla_157:

(Start: 1 @84992 has 19 MA's), (Start: 5 @85043 has 5 MA's), (7, 85085), (10, 85115), (11, 85118),

Gene: Moab_154 Start: 86981, Stop: 87169, Start Num: 1

Candidate Starts for Moab_154:

(Start: 1 @86981 has 19 MA's), (6, 87038),

Gene: Patelgo_156 Start: 87673, Stop: 87861, Start Num: 1

Candidate Starts for Patelgo_156:

(Start: 1 @87673 has 19 MA's), (6, 87730),

Gene: Phredrick_159 Start: 84874, Stop: 85065, Start Num: 1

Candidate Starts for Phredrick_159:

(Start: 1 @84874 has 19 MA's), (Start: 5 @84925 has 5 MA's), (7, 84967), (10, 84997), (11, 85000),

Gene: SeresaTree_150 Start: 84939, Stop: 85127, Start Num: 1

Candidate Starts for SeresaTree_150:

(Start: 1 @84939 has 19 MA's), (8, 85038),

Gene: Sham_151 Start: 87460, Stop: 87597, Start Num: 5

Candidate Starts for Sham_151:

(Start: 1 @87409 has 19 MA's), (Start: 5 @87460 has 5 MA's), (6, 87466), (7, 87502),

Gene: SparkleGoddess_154 Start: 86041, Stop: 86229, Start Num: 1

Candidate Starts for SparkleGoddess_154:

(Start: 1 @86041 has 19 MA's), (2, 86047), (7, 86134), (10, 86164), (11, 86167),

Gene: Stigma_153 Start: 86466, Stop: 86654, Start Num: 1

Candidate Starts for Stigma_153:

(Start: 1 @86466 has 19 MA's), (7, 86559), (10, 86589), (11, 86592),

Gene: Talos_47 Start: 17202, Stop: 17387, Start Num: 1

Candidate Starts for Talos_47:

(Start: 1 @17202 has 19 MA's), (7, 17295), (12, 17334),

Gene: TunaTartare_156 Start: 88665, Stop: 88853, Start Num: 1

Candidate Starts for TunaTartare_156:

(Start: 1 @88665 has 19 MA's), (Start: 5 @88716 has 5 MA's),

Gene: Westy_156 Start: 86781, Stop: 86969, Start Num: 1

Candidate Starts for Westy_156:

(Start: 1 @86781 has 19 MA's), (7, 86874), (10, 86904), (11, 86907),