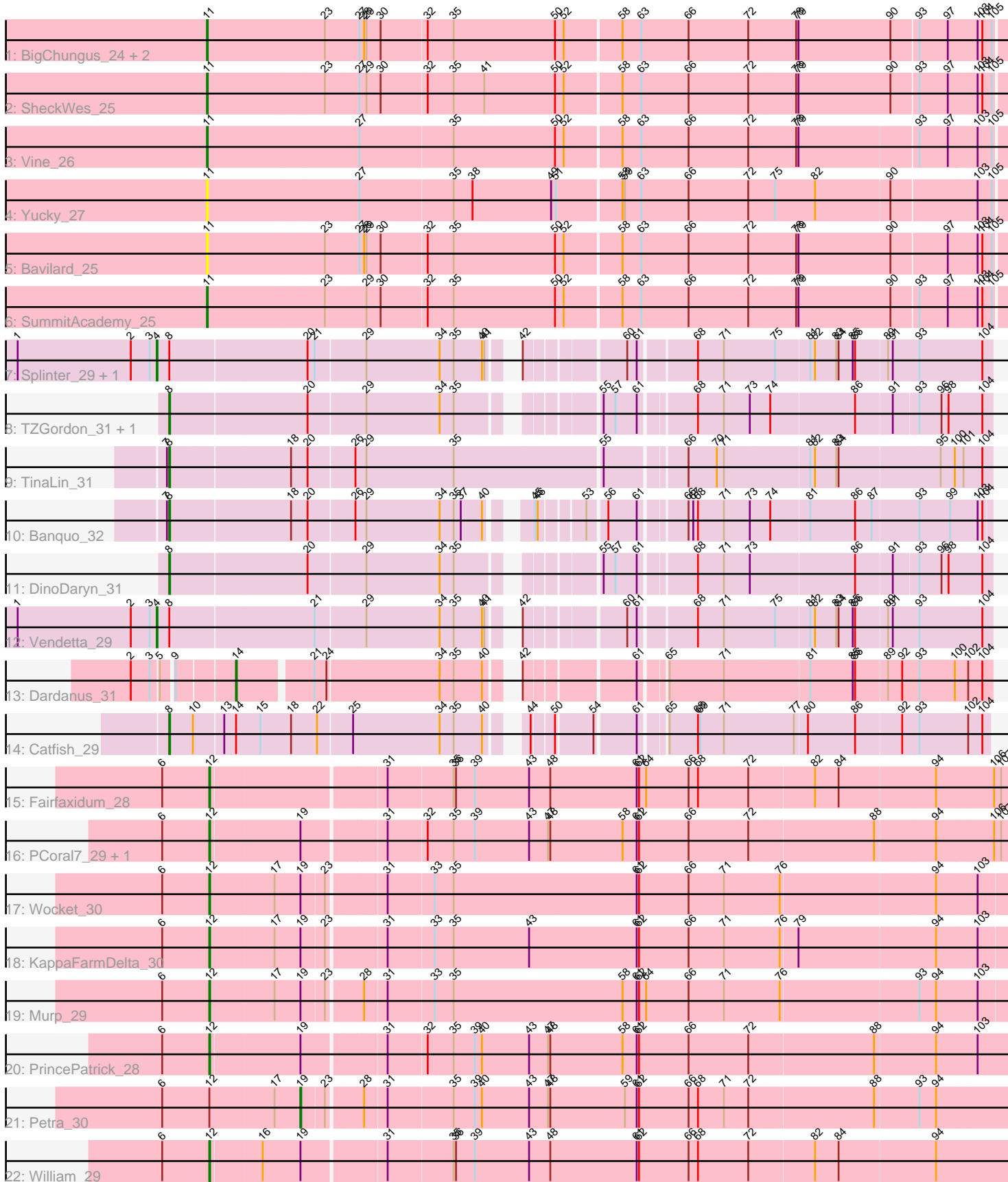


Pham 203232



Note: Tracks are now grouped by subcluster and scaled. Switching in subcluster is indicated by changes in track color. Track scale is now set by default to display the region 30 bp upstream of start 1 to 30 bp downstream of the last possible start. If this default region is judged to be packed too tightly with annotated starts, the track will be further scaled to only show that region of the ORF with annotated starts. This action will be indicated by adding "Zoomed" to the title. For starts, yellow indicates the location of called starts comprised solely of Glimmer/GeneMark auto-annotations, green indicates the location of called starts with at least 1 manual gene annotation.

Pham 203232 Report

This analysis was run 01/18/25 on database version 583.

Pham number 203232 has 27 members, 2 are drafts.

Phages represented in each track:

- Track 1 : BigChungus_24, PotPie_25, Feastonyeet_24
- Track 2 : SheckWes_25
- Track 3 : Vine_26
- Track 4 : Yucky_27
- Track 5 : Bavidard_25
- Track 6 : SummitAcademy_25
- Track 7 : Splinter_29, Goib_30
- Track 8 : TZGordon_31, Huffy_31
- Track 9 : TinaLin_31
- Track 10 : Banquo_32
- Track 11 : DinoDaryn_31
- Track 12 : Vendetta_29
- Track 13 : Dardanus_31
- Track 14 : Catfish_29
- Track 15 : Fairfaxidum_28
- Track 16 : PCoral7_29, Toast_29
- Track 17 : Wocket_30
- Track 18 : KappaFarmDelta_30
- Track 19 : Murp_29
- Track 20 : PrincePatrick_28
- Track 21 : Petra_30
- Track 22 : William_29

Summary of Final Annotations (See graph section above for start numbers):

The start number called the most often in the published annotations is 12, it was called in 8 of the 25 non-draft genes in the pham.

Genes that call this "Most Annotated" start:

- Fairfaxidum_28, KappaFarmDelta_30, Murp_29, PCoral7_29, PrincePatrick_28, Toast_29, William_29, Wocket_30,

Genes that have the "Most Annotated" start but do not call it:

- Petra_30,

Genes that do not have the "Most Annotated" start:

- Banquo_32, Bavidard_25, BigChungus_24, Catfish_29, Dardanus_31, DinoDaryn_31, Feastonyeet_24, Goib_30, Huffy_31, PotPie_25, SheckWes_25, Splinter_29, SummitAcademy_25, TZGordon_31, TinaLin_31, Vendetta_29, Vine_26, Yucky_27,

Summary by start number:

Start 4:

- Found in 3 of 27 (11.1%) of genes in pham
- Manual Annotations of this start: 3 of 25
- Called 100.0% of time when present
- Phage (with cluster) where this start called: Goib_30 (CU1), Splinter_29 (CU1), Vendetta_29 (CU1),

Start 8:

- Found in 9 of 27 (33.3%) of genes in pham
- Manual Annotations of this start: 6 of 25
- Called 66.7% of time when present
- Phage (with cluster) where this start called: Banquo_32 (CU1), Catfish_29 (CU5), DinoDaryn_31 (CU1), Huffy_31 (CU1), TZGordon_31 (CU1), TinaLin_31 (CU1),

Start 11:

- Found in 8 of 27 (29.6%) of genes in pham
- Manual Annotations of this start: 6 of 25
- Called 100.0% of time when present
- Phage (with cluster) where this start called: Bavidard_25 (CT), BigChungus_24 (CT), Feastonyeet_24 (CT), PotPie_25 (CT), SheckWes_25 (CT), SummitAcademy_25 (CT), Vine_26 (CT), Yucky_27 (CT),

Start 12:

- Found in 9 of 27 (33.3%) of genes in pham
- Manual Annotations of this start: 8 of 25
- Called 88.9% of time when present
- Phage (with cluster) where this start called: Fairfaxidum_28 (CV), KappaFarmDelta_30 (CV), Murp_29 (CV), PCoral7_29 (CV), PrincePatrick_28 (CV), Toast_29 (CV), William_29 (CV), Wocket_30 (CV),

Start 14:

- Found in 2 of 27 (7.4%) of genes in pham
- Manual Annotations of this start: 1 of 25
- Called 50.0% of time when present
- Phage (with cluster) where this start called: Dardanus_31 (CU3),

Start 19:

- Found in 8 of 27 (29.6%) of genes in pham
- Manual Annotations of this start: 1 of 25
- Called 12.5% of time when present
- Phage (with cluster) where this start called: Petra_30 (CV),

Summary by clusters:

There are 5 clusters represented in this pham: CU5, CU3, CV, CU1, CT,

Info for manual annotations of cluster CT:

- Start number 11 was manually annotated 6 times for cluster CT.

Info for manual annotations of cluster CU1:

- Start number 4 was manually annotated 3 times for cluster CU1.
- Start number 8 was manually annotated 5 times for cluster CU1.

Info for manual annotations of cluster CU3:

- Start number 14 was manually annotated 1 time for cluster CU3.

Info for manual annotations of cluster CU5:

- Start number 8 was manually annotated 1 time for cluster CU5.

Info for manual annotations of cluster CV:

- Start number 12 was manually annotated 8 times for cluster CV.
- Start number 19 was manually annotated 1 time for cluster CV.

Gene Information:

Gene: Banquo_32 Start: 23108, Stop: 24055, Start Num: 8

Candidate Starts for Banquo_32:

(7, 23105), (Start: 8 @23108 has 6 MA's), (18, 23255), (20, 23276), (26, 23333), (29, 23345), (34, 23438), (35, 23456), (37, 23465), (40, 23492), (45, 23525), (46, 23528), (53, 23576), (56, 23597), (61, 23633), (66, 23684), (67, 23690), (68, 23696), (71, 23729), (73, 23762), (74, 23786), (81, 23834), (86, 23891), (87, 23912), (93, 23969), (99, 24008), (103, 24041), (104, 24047),

Gene: Bavidard_25 Start: 21062, Stop: 22054, Start Num: 11

Candidate Starts for Bavidard_25:

(Start: 11 @21062 has 6 MA's), (23, 21209), (27, 21251), (28, 21257), (29, 21260), (30, 21278), (32, 21335), (35, 21368), (50, 21497), (52, 21506), (58, 21575), (63, 21599), (66, 21659), (72, 21734), (78, 21794), (79, 21797), (90, 21914), (97, 21983), (103, 22019), (104, 22025), (105, 22037),

Gene: BigChungus_24 Start: 20320, Stop: 21312, Start Num: 11

Candidate Starts for BigChungus_24:

(Start: 11 @20320 has 6 MA's), (23, 20467), (27, 20509), (28, 20515), (29, 20518), (30, 20536), (32, 20593), (35, 20626), (50, 20755), (52, 20764), (58, 20833), (63, 20857), (66, 20917), (72, 20992), (78, 21052), (79, 21055), (90, 21172), (93, 21205), (97, 21241), (103, 21277), (104, 21283), (105, 21295),

Gene: Catfish_29 Start: 24416, Stop: 25366, Start Num: 8

Candidate Starts for Catfish_29:

(Start: 8 @24416 has 6 MA's), (10, 24446), (13, 24482), (Start: 14 @24497 has 1 MA's), (15, 24527), (18, 24566), (22, 24599), (25, 24641), (34, 24749), (35, 24767), (40, 24803), (44, 24830), (50, 24854), (54, 24896), (61, 24944), (65, 24971), (68, 25007), (69, 25010), (71, 25040), (77, 25127), (80, 25142), (86, 25202), (92, 25259), (93, 25280), (102, 25340), (104, 25358),

Gene: Dardanus_31 Start: 23524, Stop: 24384, Start Num: 14

Candidate Starts for Dardanus_31:

(2, 23410), (3, 23434), (5, 23443), (9, 23455), (Start: 14 @23524 has 1 MA's), (21, 23611), (24, 23626), (34, 23764), (35, 23782), (40, 23818), (42, 23836), (61, 23959), (65, 23986), (71, 24055), (81, 24160),

(85, 24214), (86, 24217), (89, 24256), (92, 24274), (93, 24295), (100, 24340), (102, 24355), (104, 24373),

Gene: DinoDaryn_31 Start: 22562, Stop: 23509, Start Num: 8

Candidate Starts for DinoDaryn_31:

(Start: 8 @22562 has 6 MA's), (20, 22733), (29, 22802), (34, 22895), (35, 22913), (55, 23045), (57, 23060), (61, 23087), (68, 23150), (71, 23183), (73, 23216), (86, 23345), (91, 23390), (93, 23420), (96, 23447), (98, 23456), (104, 23498),

Gene: Fairfaxidum_28 Start: 23698, Stop: 24678, Start Num: 12

Candidate Starts for Fairfaxidum_28:

(6, 23638), (Start: 12 @23698 has 8 MA's), (31, 23905), (35, 23986), (36, 23989), (39, 24013), (43, 24082), (48, 24109), (61, 24217), (62, 24220), (64, 24229), (66, 24283), (68, 24295), (72, 24358), (82, 24439), (84, 24469), (94, 24589), (106, 24661), (107, 24670),

Gene: Feastonyeet_24 Start: 20320, Stop: 21312, Start Num: 11

Candidate Starts for Feastonyeet_24:

(Start: 11 @20320 has 6 MA's), (23, 20467), (27, 20509), (28, 20515), (29, 20518), (30, 20536), (32, 20593), (35, 20626), (50, 20755), (52, 20764), (58, 20833), (63, 20857), (66, 20917), (72, 20992), (78, 21052), (79, 21055), (90, 21172), (93, 21205), (97, 21241), (103, 21277), (104, 21283), (105, 21295),

Gene: Goib_30 Start: 22610, Stop: 23578, Start Num: 4

Candidate Starts for Goib_30:

(1, 22433), (2, 22577), (3, 22601), (Start: 4 @22610 has 3 MA's), (Start: 8 @22625 has 6 MA's), (20, 22796), (21, 22805), (29, 22865), (34, 22958), (35, 22976), (40, 23012), (41, 23015), (42, 23030), (60, 23138), (61, 23150), (68, 23216), (71, 23249), (75, 23312), (81, 23354), (82, 23360), (83, 23387), (84, 23390), (85, 23408), (86, 23411), (89, 23450), (91, 23456), (93, 23489), (104, 23567),

Gene: Huffy_31 Start: 22562, Stop: 23509, Start Num: 8

Candidate Starts for Huffy_31:

(Start: 8 @22562 has 6 MA's), (20, 22733), (29, 22802), (34, 22895), (35, 22913), (55, 23045), (57, 23060), (61, 23087), (68, 23150), (71, 23183), (73, 23216), (74, 23240), (86, 23345), (91, 23390), (93, 23420), (96, 23447), (98, 23456), (104, 23498),

Gene: KappaFarmDelta_30 Start: 23868, Stop: 24845, Start Num: 12

Candidate Starts for KappaFarmDelta_30:

(6, 23808), (Start: 12 @23868 has 8 MA's), (17, 23949), (Start: 19 @23982 has 1 MA's), (23, 24009), (31, 24075), (33, 24132), (35, 24156), (43, 24252), (61, 24387), (62, 24390), (66, 24453), (71, 24498), (76, 24567), (79, 24588), (94, 24759), (103, 24810),

Gene: Murp_29 Start: 23645, Stop: 24622, Start Num: 12

Candidate Starts for Murp_29:

(6, 23585), (Start: 12 @23645 has 8 MA's), (17, 23726), (Start: 19 @23759 has 1 MA's), (23, 23786), (28, 23825), (31, 23852), (33, 23909), (35, 23933), (58, 24146), (61, 24164), (62, 24167), (64, 24176), (66, 24230), (71, 24275), (76, 24344), (93, 24515), (94, 24536), (103, 24587),

Gene: PCoral7_29 Start: 23615, Stop: 24595, Start Num: 12

Candidate Starts for PCoral7_29:

(6, 23555), (Start: 12 @23615 has 8 MA's), (Start: 19 @23726 has 1 MA's), (31, 23822), (32, 23870), (35, 23903), (39, 23930), (43, 23999), (47, 24023), (48, 24026), (58, 24116), (61, 24134), (62, 24137), (66, 24200), (72, 24275), (88, 24431), (94, 24506), (106, 24578), (107, 24587),

Gene: Petra_30 Start: 23485, Stop: 24351, Start Num: 19

Candidate Starts for Petra_30:

(6, 23311), (Start: 12 @23371 has 8 MA's), (17, 23452), (Start: 19 @23485 has 1 MA's), (23, 23512), (28, 23551), (31, 23578), (35, 23659), (39, 23686), (40, 23695), (43, 23755), (47, 23779), (48, 23782), (59, 23875), (61, 23890), (62, 23893), (66, 23956), (68, 23968), (71, 24001), (72, 24031), (88, 24187), (93, 24241), (94, 24262),

Gene: PotPie_25 Start: 21139, Stop: 22131, Start Num: 11

Candidate Starts for PotPie_25:

(Start: 11 @21139 has 6 MA's), (23, 21286), (27, 21328), (28, 21334), (29, 21337), (30, 21355), (32, 21412), (35, 21445), (50, 21574), (52, 21583), (58, 21652), (63, 21676), (66, 21736), (72, 21811), (78, 21871), (79, 21874), (90, 21991), (93, 22024), (97, 22060), (103, 22096), (104, 22102), (105, 22114),

Gene: PrincePatrick_28 Start: 23694, Stop: 24674, Start Num: 12

Candidate Starts for PrincePatrick_28:

(6, 23634), (Start: 12 @23694 has 8 MA's), (Start: 19 @23805 has 1 MA's), (31, 23901), (32, 23949), (35, 23982), (39, 24009), (40, 24018), (43, 24078), (47, 24102), (48, 24105), (58, 24195), (61, 24213), (62, 24216), (66, 24279), (72, 24354), (88, 24510), (94, 24585), (103, 24636),

Gene: SheckWes_25 Start: 20283, Stop: 21275, Start Num: 11

Candidate Starts for SheckWes_25:

(Start: 11 @20283 has 6 MA's), (23, 20430), (27, 20472), (29, 20481), (30, 20499), (32, 20556), (35, 20589), (41, 20628), (50, 20718), (52, 20727), (58, 20796), (63, 20820), (66, 20880), (72, 20955), (78, 21015), (79, 21018), (90, 21135), (93, 21168), (97, 21204), (103, 21240), (104, 21246), (105, 21258),

Gene: Splinter_29 Start: 22610, Stop: 23578, Start Num: 4

Candidate Starts for Splinter_29:

(1, 22433), (2, 22577), (3, 22601), (Start: 4 @22610 has 3 MA's), (Start: 8 @22625 has 6 MA's), (20, 22796), (21, 22805), (29, 22865), (34, 22958), (35, 22976), (40, 23012), (41, 23015), (42, 23030), (60, 23138), (61, 23150), (68, 23216), (71, 23249), (75, 23312), (81, 23354), (82, 23360), (83, 23387), (84, 23390), (85, 23408), (86, 23411), (89, 23450), (91, 23456), (93, 23489), (104, 23567),

Gene: SummitAcademy_25 Start: 20359, Stop: 21351, Start Num: 11

Candidate Starts for SummitAcademy_25:

(Start: 11 @20359 has 6 MA's), (23, 20506), (29, 20557), (30, 20575), (32, 20632), (35, 20665), (50, 20794), (52, 20803), (58, 20872), (63, 20896), (66, 20956), (72, 21031), (78, 21091), (79, 21094), (90, 21211), (93, 21244), (97, 21280), (103, 21316), (104, 21322), (105, 21334),

Gene: TZGordon_31 Start: 22485, Stop: 23432, Start Num: 8

Candidate Starts for TZGordon_31:

(Start: 8 @22485 has 6 MA's), (20, 22656), (29, 22725), (34, 22818), (35, 22836), (55, 22968), (57, 22983), (61, 23010), (68, 23073), (71, 23106), (73, 23139), (74, 23163), (86, 23268), (91, 23313), (93, 23343), (96, 23370), (98, 23379), (104, 23421),

Gene: TinaLin_31 Start: 22732, Stop: 23730, Start Num: 8

Candidate Starts for TinaLin_31:

(7, 22729), (Start: 8 @22732 has 6 MA's), (18, 22879), (20, 22900), (26, 22957), (29, 22969), (35, 23080), (55, 23263), (66, 23356), (70, 23392), (71, 23401), (81, 23506), (82, 23512), (83, 23539), (84, 23542), (95, 23668), (100, 23686), (101, 23695), (104, 23719),

Gene: Toast_29 Start: 23615, Stop: 24595, Start Num: 12

Candidate Starts for Toast_29:

(6, 23555), (Start: 12 @23615 has 8 MA's), (Start: 19 @23726 has 1 MA's), (31, 23822), (32, 23870), (35, 23903), (39, 23930), (43, 23999), (47, 24023), (48, 24026), (58, 24116), (61, 24134), (62, 24137),

(66, 24200), (72, 24275), (88, 24431), (94, 24506), (106, 24578), (107, 24587),

Gene: Vendetta_29 Start: 22610, Stop: 23578, Start Num: 4

Candidate Starts for Vendetta_29:

(1, 22433), (2, 22577), (3, 22601), (Start: 4 @22610 has 3 MA's), (Start: 8 @22625 has 6 MA's), (21, 22805), (29, 22865), (34, 22958), (35, 22976), (40, 23012), (41, 23015), (42, 23030), (60, 23138), (61, 23150), (68, 23216), (71, 23249), (75, 23312), (81, 23354), (82, 23360), (83, 23387), (84, 23390), (85, 23408), (86, 23411), (89, 23450), (91, 23456), (93, 23489), (104, 23567),

Gene: Vine_26 Start: 21286, Stop: 22272, Start Num: 11

Candidate Starts for Vine_26:

(Start: 11 @21286 has 6 MA's), (27, 21475), (35, 21592), (50, 21721), (52, 21730), (58, 21799), (63, 21823), (66, 21883), (72, 21958), (78, 22018), (79, 22021), (93, 22168), (97, 22204), (103, 22240), (105, 22258),

Gene: William_29 Start: 23441, Stop: 24427, Start Num: 12

Candidate Starts for William_29:

(6, 23381), (Start: 12 @23441 has 8 MA's), (16, 23504), (Start: 19 @23552 has 1 MA's), (31, 23648), (35, 23729), (36, 23732), (39, 23756), (43, 23825), (48, 23852), (61, 23960), (62, 23963), (66, 24026), (68, 24038), (72, 24101), (82, 24182), (84, 24212), (94, 24332),

Gene: Wocket_30 Start: 24063, Stop: 25040, Start Num: 12

Candidate Starts for Wocket_30:

(6, 24003), (Start: 12 @24063 has 8 MA's), (17, 24144), (Start: 19 @24177 has 1 MA's), (23, 24204), (31, 24270), (33, 24327), (35, 24351), (61, 24582), (62, 24585), (66, 24648), (71, 24693), (76, 24762), (94, 24954), (103, 25005),

Gene: Yucky_27 Start: 21145, Stop: 22131, Start Num: 11

Candidate Starts for Yucky_27:

(Start: 11 @21145 has 6 MA's), (27, 21334), (35, 21451), (38, 21475), (49, 21574), (51, 21580), (58, 21658), (59, 21661), (63, 21682), (66, 21742), (72, 21817), (75, 21850), (82, 21901), (90, 21994), (103, 22099), (105, 22117),