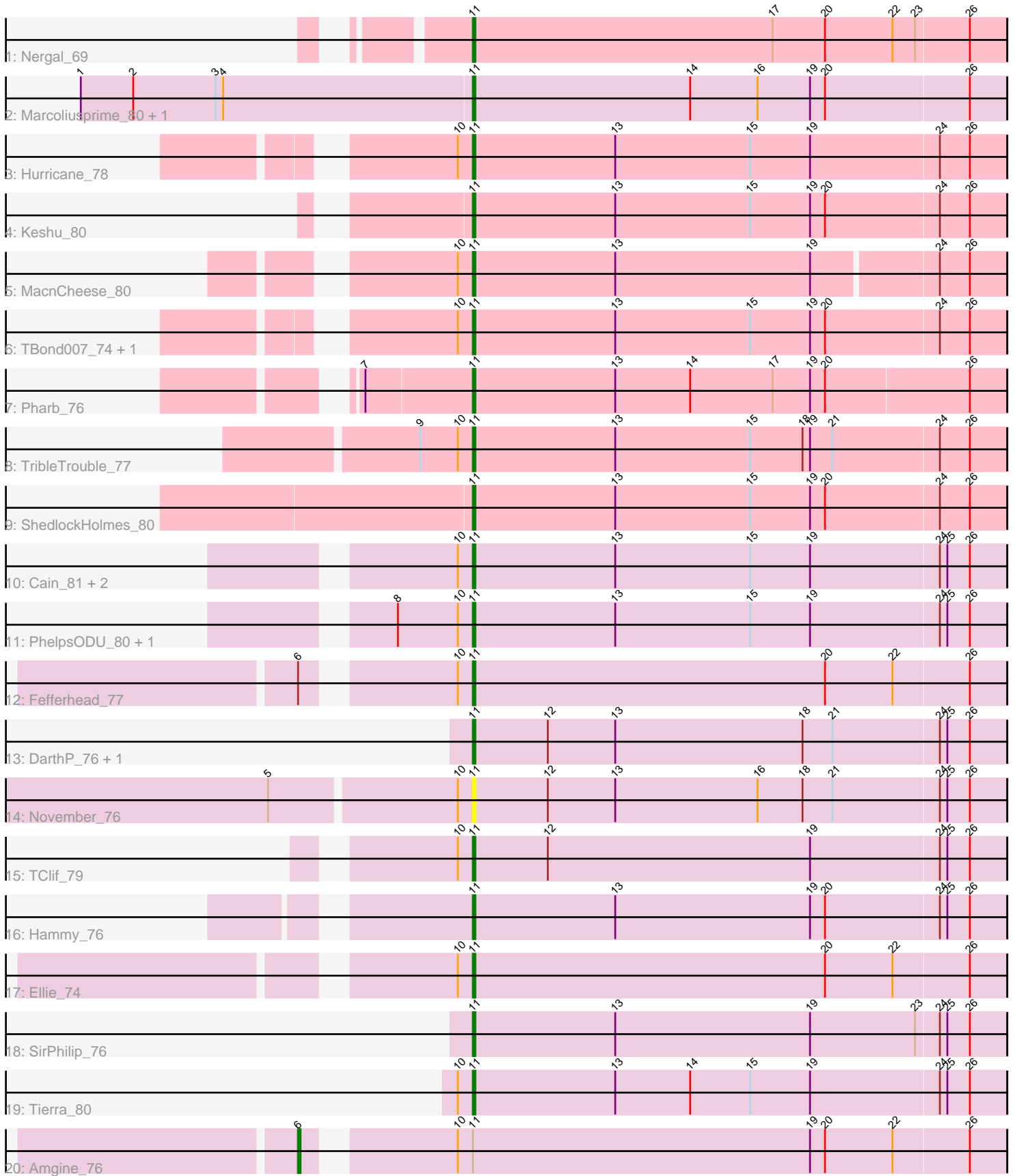


Pham 203236



Note: Tracks are now grouped by subcluster and scaled. Switching in subcluster is indicated by changes in track color. Track scale is now set by default to display the region 30 bp upstream of start 1 to 30 bp downstream of the last possible start. If this default region is judged to be packed too tightly with annotated starts, the track will be further scaled to only show that region of the ORF with annotated starts. This action will be indicated by adding "Zoomed" to the title. For starts, yellow indicates the location of called starts comprised solely of Glimmer/GeneMark auto-annotations, green indicates the location of called starts with at least 1 manual gene annotation.

## Pham 203236 Report

This analysis was run 01/18/25 on database version 583.

Pham number 203236 has 26 members, 1 are drafts.

Phages represented in each track:

- Track 1 : Nergal\_69
- Track 2 : Marcoliusprime\_80, DismalStressor\_81
- Track 3 : Hurricane\_78
- Track 4 : Keshu\_80
- Track 5 : MacnCheese\_80
- Track 6 : TBond007\_74, Pixie\_77
- Track 7 : Pharb\_76
- Track 8 : TripleTrouble\_77
- Track 9 : ShedlockHolmes\_80
- Track 10 : Cain\_81, Bryler\_81, Phrank\_81
- Track 11 : PhelpsODU\_80, Unicorn\_80
- Track 12 : Fefferhead\_77
- Track 13 : DarthP\_76, Amohnition\_76
- Track 14 : November\_76
- Track 15 : TClif\_79
- Track 16 : Hammy\_76
- Track 17 : Ellie\_74
- Track 18 : SirPhilip\_76
- Track 19 : Tierra\_80
- Track 20 : Amgine\_76

### ***Summary of Final Annotations (See graph section above for start numbers):***

The start number called the most often in the published annotations is 11, it was called in 24 of the 25 non-draft genes in the pham.

Genes that call this "Most Annotated" start:

• Amohnition\_76, Bryler\_81, Cain\_81, DarthP\_76, DismalStressor\_81, Ellie\_74, Fefferhead\_77, Hammy\_76, Hurricane\_78, Keshu\_80, MacnCheese\_80, Marcoliusprime\_80, Nergal\_69, November\_76, Pharb\_76, PhelpsODU\_80, Phrank\_81, Pixie\_77, ShedlockHolmes\_80, SirPhilip\_76, TBond007\_74, TClif\_79, Tierra\_80, TripleTrouble\_77, Unicorn\_80,

Genes that have the "Most Annotated" start but do not call it:

- Amgine\_76,

Genes that do not have the "Most Annotated" start:

- 

### Summary by start number:

Start 6:

- Found in 2 of 26 ( 7.7% ) of genes in pham
- Manual Annotations of this start: 1 of 25
- Called 50.0% of time when present
- Phage (with cluster) where this start called: Amgine\_76 (K6),

Start 11:

- Found in 26 of 26 ( 100.0% ) of genes in pham
- Manual Annotations of this start: 24 of 25
- Called 96.2% of time when present
- Phage (with cluster) where this start called: Amohnition\_76 (K6), Bryler\_81 (K6), Cain\_81 (K6), DarthP\_76 (K6), DismalStressor\_81 (K2), Ellie\_74 (K6), Fefferhead\_77 (K6), Hammy\_76 (K6), Hurricane\_78 (K3), Keshu\_80 (K3), MacnCheese\_80 (K3), Marcoliusprime\_80 (K2), Nergal\_69 (AG), November\_76 (K6), Pharb\_76 (K3), PhelpsODU\_80 (K6), Phrank\_81 (K6), Pixie\_77 (K3), ShedlockHolmes\_80 (K3), SirPhilip\_76 (K6), TBond007\_74 (K3), TClif\_79 (K6), Tierra\_80 (K6), TribbleTrouble\_77 (K3), Unicorn\_80 (K6),

### Summary by clusters:

There are 4 clusters represented in this pham: K3, K2, K6, AG,

Info for manual annotations of cluster AG:

- Start number 11 was manually annotated 1 time for cluster AG.

Info for manual annotations of cluster K2:

- Start number 11 was manually annotated 2 times for cluster K2.

Info for manual annotations of cluster K3:

- Start number 11 was manually annotated 8 times for cluster K3.

Info for manual annotations of cluster K6:

- Start number 6 was manually annotated 1 time for cluster K6.
- Start number 11 was manually annotated 13 times for cluster K6.

### Gene Information:

Gene: Amgine\_76 Start: 51678, Stop: 51947, Start Num: 6

Candidate Starts for Amgine\_76:

(Start: 6 @51678 has 1 MA's), (10, 51729), (Start: 11 @51735 has 24 MA's), (19, 51870), (20, 51876), (22, 51903), (26, 51933),

Gene: Amohnition\_76 Start: 51628, Stop: 51840, Start Num: 11

Candidate Starts for Amohnition\_76:

(Start: 11 @51628 has 24 MA's), (12, 51658), (13, 51685), (18, 51760), (21, 51772), (24, 51814), (25, 51817), (26, 51826),

Gene: Bryler\_81 Start: 50668, Stop: 50880, Start Num: 11

Candidate Starts for Bryler\_81:

(10, 50662), (Start: 11 @50668 has 24 MA's), (13, 50725), (15, 50779), (19, 50803), (24, 50854), (25, 50857), (26, 50866),

Gene: Cain\_81 Start: 50656, Stop: 50868, Start Num: 11

Candidate Starts for Cain\_81:

(10, 50650), (Start: 11 @50656 has 24 MA's), (13, 50713), (15, 50767), (19, 50791), (24, 50842), (25, 50845), (26, 50854),

Gene: DarthP\_76 Start: 51481, Stop: 51693, Start Num: 11

Candidate Starts for DarthP\_76:

(Start: 11 @51481 has 24 MA's), (12, 51511), (13, 51538), (18, 51613), (21, 51625), (24, 51667), (25, 51670), (26, 51679),

Gene: DismalStressor\_81 Start: 53059, Stop: 53271, Start Num: 11

Candidate Starts for DismalStressor\_81:

(1, 52903), (2, 52924), (3, 52957), (4, 52960), (Start: 11 @53059 has 24 MA's), (14, 53146), (16, 53173), (19, 53194), (20, 53200), (26, 53257),

Gene: Ellie\_74 Start: 50904, Stop: 51116, Start Num: 11

Candidate Starts for Ellie\_74:

(10, 50898), (Start: 11 @50904 has 24 MA's), (20, 51045), (22, 51072), (26, 51102),

Gene: Fefferhead\_77 Start: 50965, Stop: 51177, Start Num: 11

Candidate Starts for Fefferhead\_77:

(Start: 6 @50908 has 1 MA's), (10, 50959), (Start: 11 @50965 has 24 MA's), (20, 51106), (22, 51133), (26, 51163),

Gene: Hammy\_76 Start: 51468, Stop: 51680, Start Num: 11

Candidate Starts for Hammy\_76:

(Start: 11 @51468 has 24 MA's), (13, 51525), (19, 51603), (20, 51609), (24, 51654), (25, 51657), (26, 51666),

Gene: Hurricane\_78 Start: 51017, Stop: 51229, Start Num: 11

Candidate Starts for Hurricane\_78:

(10, 51011), (Start: 11 @51017 has 24 MA's), (13, 51074), (15, 51128), (19, 51152), (24, 51203), (26, 51215),

Gene: Keshu\_80 Start: 51207, Stop: 51419, Start Num: 11

Candidate Starts for Keshu\_80:

(Start: 11 @51207 has 24 MA's), (13, 51264), (15, 51318), (19, 51342), (20, 51348), (24, 51393), (26, 51405),

Gene: MacnCheese\_80 Start: 51630, Stop: 51839, Start Num: 11

Candidate Starts for MacnCheese\_80:

(10, 51624), (Start: 11 @51630 has 24 MA's), (13, 51687), (19, 51765), (24, 51813), (26, 51825),

Gene: Marcoliusprime\_80 Start: 53059, Stop: 53271, Start Num: 11

Candidate Starts for Marcoliusprime\_80:

(1, 52903), (2, 52924), (3, 52957), (4, 52960), (Start: 11 @53059 has 24 MA's), (14, 53146), (16, 53173), (19, 53194), (20, 53200), (26, 53257),

Gene: Nergal\_69 Start: 47627, Stop: 47839, Start Num: 11

Candidate Starts for Nergal\_69:

(Start: 11 @47627 has 24 MA's), (17, 47747), (20, 47768), (22, 47795), (23, 47804), (26, 47825),

Gene: November\_76 Start: 51285, Stop: 51497, Start Num: 11

Candidate Starts for November\_76:

(5, 51207), (10, 51279), (Start: 11 @51285 has 24 MA's), (12, 51315), (13, 51342), (16, 51399), (18, 51417), (21, 51429), (24, 51471), (25, 51474), (26, 51483),

Gene: Pharb\_76 Start: 50297, Stop: 50509, Start Num: 11

Candidate Starts for Pharb\_76:

(7, 50255), (Start: 11 @50297 has 24 MA's), (13, 50354), (14, 50384), (17, 50417), (19, 50432), (20, 50438), (26, 50495),

Gene: PhelpsODU\_80 Start: 50783, Stop: 50995, Start Num: 11

Candidate Starts for PhelpsODU\_80:

(8, 50753), (10, 50777), (Start: 11 @50783 has 24 MA's), (13, 50840), (15, 50894), (19, 50918), (24, 50969), (25, 50972), (26, 50981),

Gene: Phrank\_81 Start: 50643, Stop: 50855, Start Num: 11

Candidate Starts for Phrank\_81:

(10, 50637), (Start: 11 @50643 has 24 MA's), (13, 50700), (15, 50754), (19, 50778), (24, 50829), (25, 50832), (26, 50841),

Gene: Pixie\_77 Start: 50595, Stop: 50807, Start Num: 11

Candidate Starts for Pixie\_77:

(10, 50589), (Start: 11 @50595 has 24 MA's), (13, 50652), (15, 50706), (19, 50730), (20, 50736), (24, 50781), (26, 50793),

Gene: ShedlockHolmes\_80 Start: 51112, Stop: 51324, Start Num: 11

Candidate Starts for ShedlockHolmes\_80:

(Start: 11 @51112 has 24 MA's), (13, 51169), (15, 51223), (19, 51247), (20, 51253), (24, 51298), (26, 51310),

Gene: SirPhilip\_76 Start: 51179, Stop: 51391, Start Num: 11

Candidate Starts for SirPhilip\_76:

(Start: 11 @51179 has 24 MA's), (13, 51236), (19, 51314), (23, 51356), (24, 51365), (25, 51368), (26, 51377),

Gene: TBond007\_74 Start: 50594, Stop: 50806, Start Num: 11

Candidate Starts for TBond007\_74:

(10, 50588), (Start: 11 @50594 has 24 MA's), (13, 50651), (15, 50705), (19, 50729), (20, 50735), (24, 50780), (26, 50792),

Gene: TClif\_79 Start: 50907, Stop: 51119, Start Num: 11

Candidate Starts for TClif\_79:

(10, 50901), (Start: 11 @50907 has 24 MA's), (12, 50937), (19, 51042), (24, 51093), (25, 51096), (26, 51105),

Gene: Tierra\_80 Start: 51070, Stop: 51282, Start Num: 11

Candidate Starts for Tierra\_80:

(10, 51064), (Start: 11 @51070 has 24 MA's), (13, 51127), (14, 51157), (15, 51181), (19, 51205), (24, 51256), (25, 51259), (26, 51268),

Gene: TribelTrouble\_77 Start: 50865, Stop: 51077, Start Num: 11

Candidate Starts for TribelTrouble\_77:

(9, 50844), (10, 50859), (Start: 11 @50865 has 24 MA's), (13, 50922), (15, 50976), (18, 50997), (19, 51000), (21, 51009), (24, 51051), (26, 51063),

Gene: Unicorn\_80 Start: 50783, Stop: 50995, Start Num: 11

Candidate Starts for Unicorn\_80:

(8, 50753), (10, 50777), (Start: 11 @50783 has 24 MA's), (13, 50840), (15, 50894), (19, 50918), (24, 50969), (25, 50972), (26, 50981),