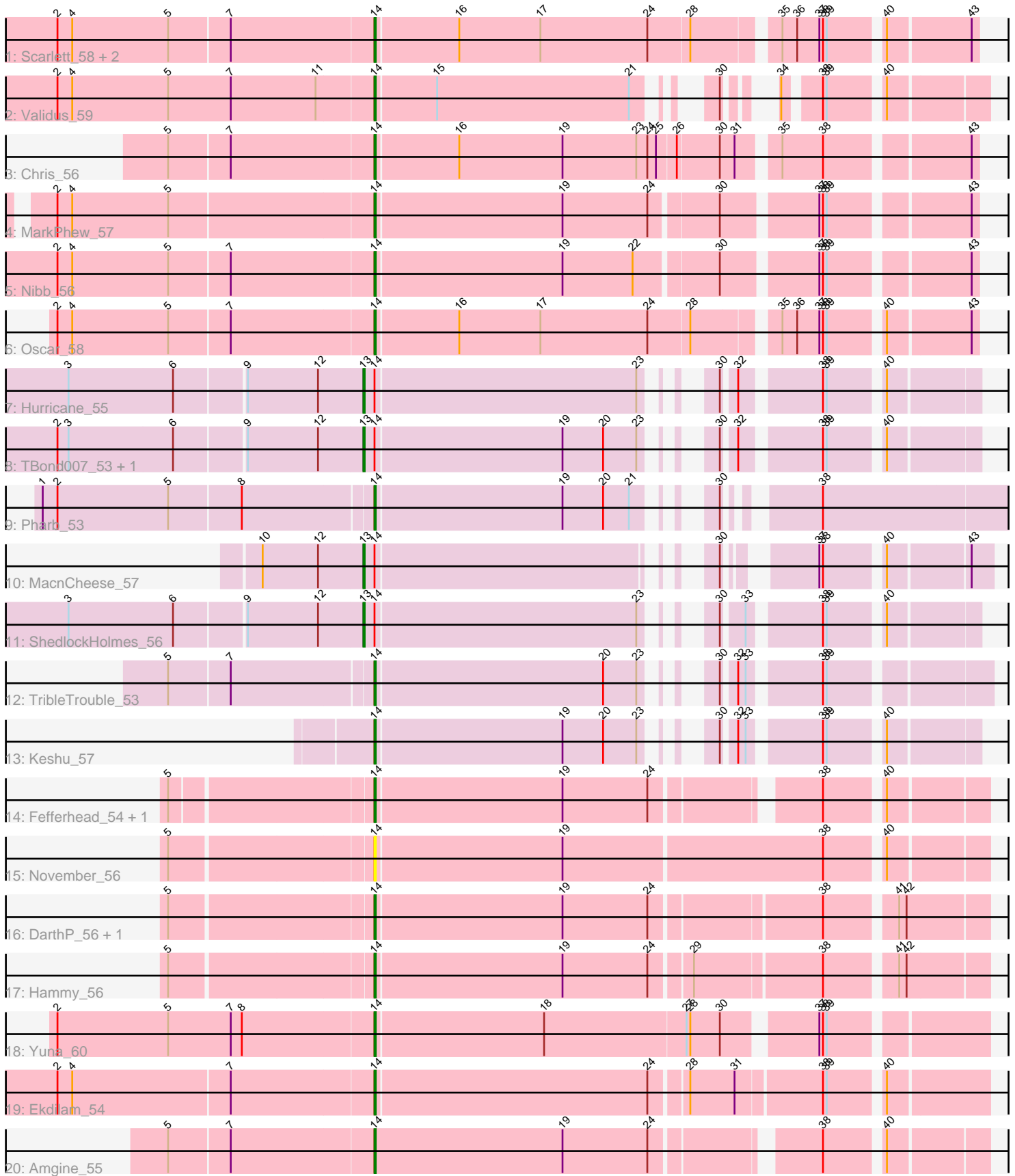


Pham 203248



Note: Tracks are now grouped by subcluster and scaled. Switching in subcluster is indicated by changes in track color. Track scale is now set by default to display the region 30 bp upstream of start 1 to 30 bp downstream of the last possible start. If this default region is judged to be packed too tightly with annotated starts, the track will be further scaled to only show that region of the ORF with annotated starts. This action will be indicated by adding "Zoomed" to the title. For starts, yellow indicates the location of called starts comprised solely of Glimmer/GeneMark auto-annotations, green indicates the location of called starts with at least 1 manual gene annotation.

## Pham 203248 Report

This analysis was run 01/18/25 on database version 583.

Pham number 203248 has 25 members, 1 are drafts.

Phages represented in each track:

- Track 1 : Scarlett\_58, LeMond\_58, KiSi\_58
- Track 2 : Validus\_59
- Track 3 : Chris\_56
- Track 4 : MarkPhew\_57
- Track 5 : Nibb\_56
- Track 6 : Oscar\_58
- Track 7 : Hurricane\_55
- Track 8 : TBond007\_53, Pixie\_54
- Track 9 : Pharb\_53
- Track 10 : MacnCheese\_57
- Track 11 : ShedlockHolmes\_56
- Track 12 : TribbleTrouble\_53
- Track 13 : Keshu\_57
- Track 14 : Fefferhead\_54, Ellie\_52
- Track 15 : November\_56
- Track 16 : DarthP\_56, Amohnition\_56
- Track 17 : Hammy\_56
- Track 18 : Yuna\_60
- Track 19 : Ekdilam\_54
- Track 20 : Amgine\_55

### ***Summary of Final Annotations (See graph section above for start numbers):***

The start number called the most often in the published annotations is 14, it was called in 19 of the 24 non-draft genes in the pham.

Genes that call this "Most Annotated" start:

- Amgine\_55, Amohnition\_56, Chris\_56, DarthP\_56, Ekdilam\_54, Ellie\_52, Fefferhead\_54, Hammy\_56, Keshu\_57, KiSi\_58, LeMond\_58, MarkPhew\_57, Nibb\_56, November\_56, Oscar\_58, Pharb\_53, Scarlett\_58, TribbleTrouble\_53, Validus\_59, Yuna\_60,

Genes that have the "Most Annotated" start but do not call it:

- Hurricane\_55, MacnCheese\_57, Pixie\_54, ShedlockHolmes\_56, TBond007\_53,

Genes that do not have the "Most Annotated" start:

- 

### Summary by start number:

Start 13:

- Found in 5 of 25 ( 20.0% ) of genes in pham
- Manual Annotations of this start: 5 of 24
- Called 100.0% of time when present
- Phage (with cluster) where this start called: Hurricane\_55 (K3), MacnCheese\_57 (K3), Pixie\_54 (K3), ShedlockHolmes\_56 (K3), TBond007\_53 (K3),

Start 14:

- Found in 25 of 25 ( 100.0% ) of genes in pham
- Manual Annotations of this start: 19 of 24
- Called 80.0% of time when present
- Phage (with cluster) where this start called: Amgine\_55 (K6), Amohnition\_56 (K6), Chris\_56 (K1), DARTH\_P\_56 (K6), Ekdilam\_54 (K6), Ellie\_52 (K6), Fefferhead\_54 (K6), Hammy\_56 (K6), Keshu\_57 (K3), KiSi\_58 (K1), LeMond\_58 (K1), MarkPhew\_57 (K1), Nibb\_56 (K1), November\_56 (K6), Oscar\_58 (K1), Pharb\_53 (K3), Scarlett\_58 (K1), TripleTrouble\_53 (K3), Validus\_59 (K1), Yuna\_60 (K6),

### Summary by clusters:

There are 3 clusters represented in this pham: K3, K1, K6,

Info for manual annotations of cluster K1:

- Start number 14 was manually annotated 8 times for cluster K1.

Info for manual annotations of cluster K3:

- Start number 13 was manually annotated 5 times for cluster K3.
- Start number 14 was manually annotated 3 times for cluster K3.

Info for manual annotations of cluster K6:

- Start number 14 was manually annotated 8 times for cluster K6.

### Gene Information:

Gene: Amgine\_55 Start: 40361, Stop: 40816, Start Num: 14

Candidate Starts for Amgine\_55:

(5, 40199), (7, 40247), (Start: 14 @40361 has 19 MA's), (19, 40514), (24, 40583), (38, 40700), (40, 40742),

Gene: Amohnition\_56 Start: 39941, Stop: 40408, Start Num: 14

Candidate Starts for Amohnition\_56:

(5, 39785), (Start: 14 @39941 has 19 MA's), (19, 40091), (24, 40160), (38, 40289), (41, 40340), (42, 40346),

Gene: Chris\_56 Start: 39748, Stop: 40203, Start Num: 14

Candidate Starts for Chris\_56:

(5, 39586), (7, 39634), (Start: 14 @39748 has 19 MA's), (16, 39814), (19, 39898), (23, 39958), (24, 39967), (25, 39973), (26, 39988), (30, 40021), (31, 40033), (35, 40060), (38, 40093), (43, 40198),

Gene: DarthP\_56 Start: 39825, Stop: 40292, Start Num: 14

Candidate Starts for DarthP\_56:

(5, 39669), (Start: 14 @39825 has 19 MA's), (19, 39975), (24, 40044), (38, 40173), (41, 40224), (42, 40230),

Gene: Ekdilam\_54 Start: 39830, Stop: 40297, Start Num: 14

Candidate Starts for Ekdilam\_54:

(2, 39578), (4, 39590), (7, 39716), (Start: 14 @39830 has 19 MA's), (24, 40049), (28, 40076), (31, 40112), (38, 40178), (39, 40181), (40, 40220),

Gene: Ellie\_52 Start: 39193, Stop: 39645, Start Num: 14

Candidate Starts for Ellie\_52:

(5, 39040), (Start: 14 @39193 has 19 MA's), (19, 39343), (24, 39412), (38, 39529), (40, 39571),

Gene: Fefferhead\_54 Start: 39140, Stop: 39592, Start Num: 14

Candidate Starts for Fefferhead\_54:

(5, 38987), (Start: 14 @39140 has 19 MA's), (19, 39290), (24, 39359), (38, 39476), (40, 39518),

Gene: Hammy\_56 Start: 39813, Stop: 40280, Start Num: 14

Candidate Starts for Hammy\_56:

(5, 39657), (Start: 14 @39813 has 19 MA's), (19, 39963), (24, 40032), (29, 40062), (38, 40161), (41, 40212), (42, 40218),

Gene: Hurricane\_55 Start: 39527, Stop: 39946, Start Num: 13

Candidate Starts for Hurricane\_55:

(3, 39296), (6, 39380), (9, 39434), (12, 39491), (Start: 13 @39527 has 5 MA's), (Start: 14 @39536 has 19 MA's), (23, 39746), (30, 39770), (32, 39779), (38, 39836), (39, 39839), (40, 39878),

Gene: Keshu\_57 Start: 39634, Stop: 40044, Start Num: 14

Candidate Starts for Keshu\_57:

(Start: 14 @39634 has 19 MA's), (19, 39784), (20, 39817), (23, 39844), (30, 39868), (32, 39877), (33, 39883), (38, 39934), (39, 39937), (40, 39976),

Gene: KiSi\_58 Start: 39779, Stop: 40234, Start Num: 14

Candidate Starts for KiSi\_58:

(2, 39527), (4, 39539), (5, 39617), (7, 39665), (Start: 14 @39779 has 19 MA's), (16, 39845), (17, 39911), (24, 39998), (28, 40031), (35, 40091), (36, 40103), (37, 40121), (38, 40124), (39, 40127), (40, 40166), (43, 40229),

Gene: LeMond\_58 Start: 39760, Stop: 40215, Start Num: 14

Candidate Starts for LeMond\_58:

(2, 39508), (4, 39520), (5, 39598), (7, 39646), (Start: 14 @39760 has 19 MA's), (16, 39826), (17, 39892), (24, 39979), (28, 40012), (35, 40072), (36, 40084), (37, 40102), (38, 40105), (39, 40108), (40, 40147), (43, 40210),

Gene: MacnCheese\_57 Start: 40122, Stop: 40535, Start Num: 13

Candidate Starts for MacnCheese\_57:

(10, 40041), (12, 40086), (Start: 13 @40122 has 5 MA's), (Start: 14 @40131 has 19 MA's), (30, 40362), (37, 40413), (38, 40416), (40, 40458), (43, 40518),

Gene: MarkPhew\_57 Start: 39451, Stop: 39903, Start Num: 14

Candidate Starts for MarkPhew\_57:

(2, 39199), (4, 39211), (5, 39289), (Start: 14 @39451 has 19 MA's), (19, 39601), (24, 39670), (30, 39721), (37, 39790), (38, 39793), (39, 39796), (43, 39898),

Gene: Nibb\_56 Start: 39155, Stop: 39607, Start Num: 14

Candidate Starts for Nibb\_56:

(2, 38903), (4, 38915), (5, 38993), (7, 39041), (Start: 14 @39155 has 19 MA's), (19, 39305), (22, 39362), (30, 39425), (37, 39494), (38, 39497), (39, 39500), (43, 39602),

Gene: November\_56 Start: 39693, Stop: 40166, Start Num: 14

Candidate Starts for November\_56:

(5, 39537), (Start: 14 @39693 has 19 MA's), (19, 39843), (38, 40050), (40, 40092),

Gene: Oscar\_58 Start: 39665, Stop: 40120, Start Num: 14

Candidate Starts for Oscar\_58:

(2, 39413), (4, 39425), (5, 39503), (7, 39551), (Start: 14 @39665 has 19 MA's), (16, 39731), (17, 39797), (24, 39884), (28, 39917), (35, 39977), (36, 39989), (37, 40007), (38, 40010), (39, 40013), (40, 40052), (43, 40115),

Gene: Pharb\_53 Start: 38444, Stop: 38890, Start Num: 14

Candidate Starts for Pharb\_53:

(1, 38183), (2, 38195), (5, 38285), (8, 38342), (Start: 14 @38444 has 19 MA's), (19, 38594), (20, 38627), (21, 38648), (30, 38678), (38, 38732),

Gene: Pixie\_54 Start: 39065, Stop: 39484, Start Num: 13

Candidate Starts for Pixie\_54:

(2, 38825), (3, 38834), (6, 38918), (9, 38972), (12, 39029), (Start: 13 @39065 has 5 MA's), (Start: 14 @39074 has 19 MA's), (19, 39224), (20, 39257), (23, 39284), (30, 39308), (32, 39317), (38, 39374), (39, 39377), (40, 39416),

Gene: Scarlett\_58 Start: 39660, Stop: 40115, Start Num: 14

Candidate Starts for Scarlett\_58:

(2, 39408), (4, 39420), (5, 39498), (7, 39546), (Start: 14 @39660 has 19 MA's), (16, 39726), (17, 39792), (24, 39879), (28, 39912), (35, 39972), (36, 39984), (37, 40002), (38, 40005), (39, 40008), (40, 40047), (43, 40110),

Gene: ShedlockHolmes\_56 Start: 39584, Stop: 40003, Start Num: 13

Candidate Starts for ShedlockHolmes\_56:

(3, 39353), (6, 39437), (9, 39491), (12, 39548), (Start: 13 @39584 has 5 MA's), (Start: 14 @39593 has 19 MA's), (23, 39803), (30, 39827), (33, 39842), (38, 39893), (39, 39896), (40, 39935),

Gene: TBond007\_53 Start: 39064, Stop: 39483, Start Num: 13

Candidate Starts for TBond007\_53:

(2, 38824), (3, 38833), (6, 38917), (9, 38971), (12, 39028), (Start: 13 @39064 has 5 MA's), (Start: 14 @39073 has 19 MA's), (19, 39223), (20, 39256), (23, 39283), (30, 39307), (32, 39316), (38, 39373), (39, 39376), (40, 39415),

Gene: TribbleTrouble\_53 Start: 39295, Stop: 39714, Start Num: 14

Candidate Starts for TribbleTrouble\_53:

(5, 39136), (7, 39184), (Start: 14 @39295 has 19 MA's), (20, 39478), (23, 39505), (30, 39529), (32, 39538), (33, 39544), (38, 39595), (39, 39598),

Gene: Validus\_59 Start: 40022, Stop: 40411, Start Num: 14

Candidate Starts for Validus\_59:

(2, 39767), (4, 39779), (5, 39857), (7, 39908), (11, 39977), (Start: 14 @40022 has 19 MA's), (15, 40070), (21, 40226), (30, 40256), (34, 40271), (38, 40295), (39, 40298), (40, 40337),

Gene: Yuna\_60 Start: 40495, Stop: 40959, Start Num: 14

Candidate Starts for Yuna\_60:

(2, 40240), (5, 40330), (7, 40381), (8, 40390), (Start: 14 @40495 has 19 MA's), (18, 40630), (27, 40744), (28, 40747), (30, 40771), (37, 40837), (38, 40840), (39, 40843),