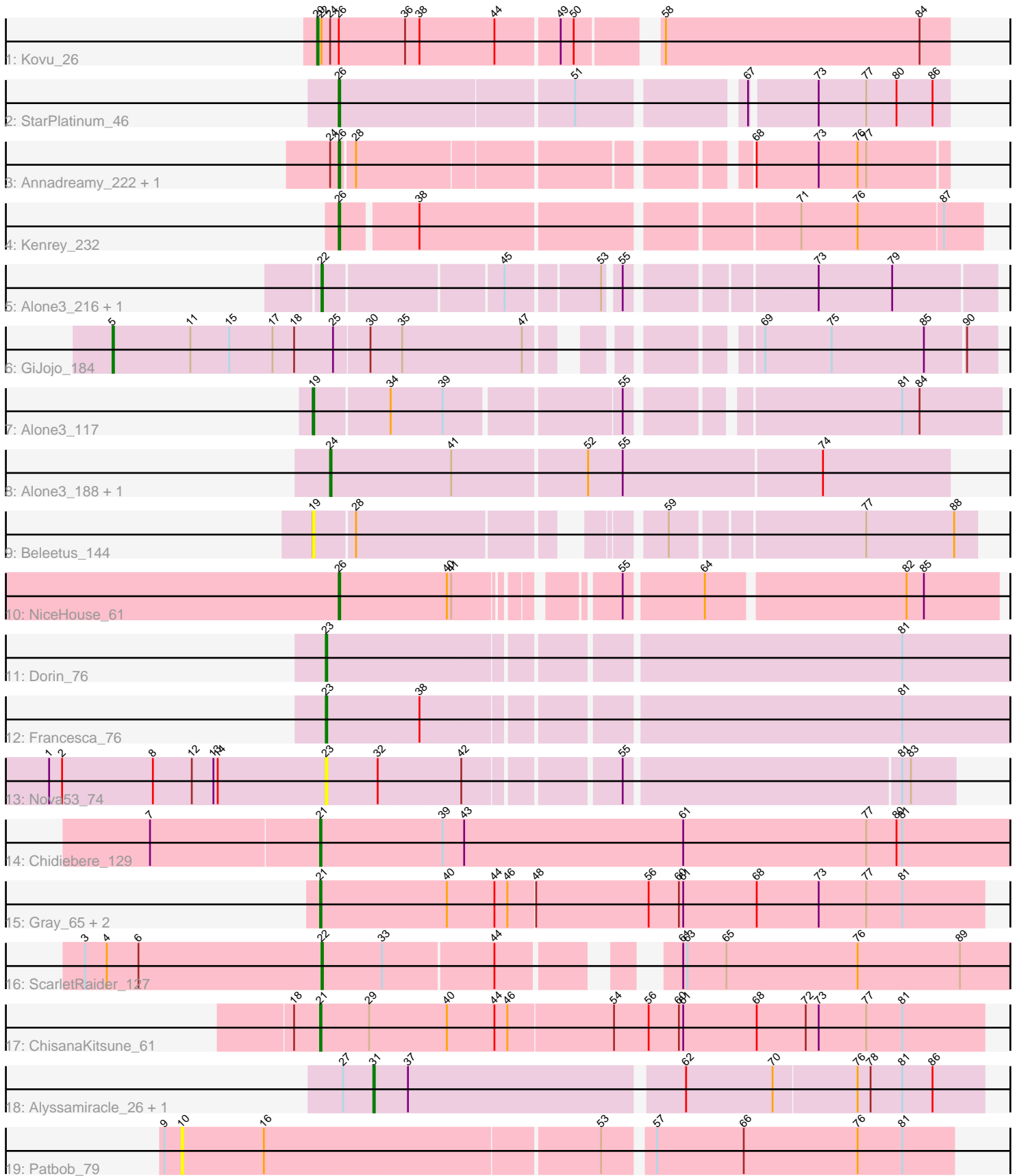


Pham 203252



Note: Tracks are now grouped by subcluster and scaled. Switching in subcluster is indicated by changes in track color. Track scale is now set by default to display the region 30 bp upstream of start 1 to 30 bp downstream of the last possible start. If this default region is judged to be packed too tightly with annotated starts, the track will be further scaled to only show that region of the ORF with annotated starts. This action will be indicated by adding "Zoomed" to the title. For starts, yellow indicates the location of called starts comprised solely of Glimmer/GeneMark auto-annotations, green indicates the location of called starts with at least 1 manual gene annotation.

Pham 203252 Report

This analysis was run 01/18/25 on database version 583.

Pham number 203252 has 25 members, 5 are drafts.

Phages represented in each track:

- Track 1 : Kovu_26
- Track 2 : StarPlatinum_46
- Track 3 : Annadreamy_222, Limpid_229
- Track 4 : Kenrey_232
- Track 5 : Alone3_216, Talos_215
- Track 6 : GiJojo_184
- Track 7 : Alone3_117
- Track 8 : Alone3_188, Talos_188
- Track 9 : Beleetus_144
- Track 10 : NiceHouse_61
- Track 11 : Dorin_76
- Track 12 : Francesca_76
- Track 13 : Nova53_74
- Track 14 : Chidiebere_129
- Track 15 : Gray_65, Chidiebere_65, Kabocha_66
- Track 16 : ScarletRaider_127
- Track 17 : ChisanaKitsune_61
- Track 18 : Alyssamiracle_26, Genamy16_26
- Track 19 : Patbob_79

Summary of Final Annotations (See graph section above for start numbers):

The start number called the most often in the published annotations is 26, it was called in 5 of the 20 non-draft genes in the pham.

Genes that call this "Most Annotated" start:

- Annadreamy_222, Kenrey_232, Limpid_229, NiceHouse_61, StarPlatinum_46,

Genes that have the "Most Annotated" start but do not call it:

- Kovu_26,

Genes that do not have the "Most Annotated" start:

- Alone3_117, Alone3_188, Alone3_216, Alyssamiracle_26, Beleetus_144, Chidiebere_129, Chidiebere_65, ChisanaKitsune_61, Dorin_76, Francesca_76,

Genamy16_26, GiJojo_184, Gray_65, Kabocha_66, Nova53_74, Patbob_79, ScarletRaider_127, Talos_188, Talos_215,

Summary by start number:

Start 5:

- Found in 1 of 25 (4.0%) of genes in pham
- Manual Annotations of this start: 1 of 20
- Called 100.0% of time when present
- Phage (with cluster) where this start called: GiJojo_184 (BS),

Start 10:

- Found in 1 of 25 (4.0%) of genes in pham
- No Manual Annotations of this start.
- Called 100.0% of time when present
- Phage (with cluster) where this start called: Patbob_79 (FC),

Start 19:

- Found in 2 of 25 (8.0%) of genes in pham
- Manual Annotations of this start: 1 of 20
- Called 100.0% of time when present
- Phage (with cluster) where this start called: Alone3_117 (BS), Beleetus_144 (BS),

Start 20:

- Found in 1 of 25 (4.0%) of genes in pham
- Manual Annotations of this start: 1 of 20
- Called 100.0% of time when present
- Phage (with cluster) where this start called: Kovu_26 (AL),

Start 21:

- Found in 5 of 25 (20.0%) of genes in pham
- Manual Annotations of this start: 5 of 20
- Called 100.0% of time when present
- Phage (with cluster) where this start called: Chidiebere_129 (DQ), Chidiebere_65 (DQ), ChisanaKitsune_61 (DQ), Gray_65 (DQ), Kabocha_66 (DQ),

Start 22:

- Found in 4 of 25 (16.0%) of genes in pham
- Manual Annotations of this start: 2 of 20
- Called 75.0% of time when present
- Phage (with cluster) where this start called: Alone3_216 (BS), ScarletRaider_127 (DQ), Talos_215 (BS),

Start 23:

- Found in 3 of 25 (12.0%) of genes in pham
- Manual Annotations of this start: 2 of 20
- Called 100.0% of time when present
- Phage (with cluster) where this start called: Dorin_76 (CG), Francesca_76 (CG), Nova53_74 (CG),

Start 24:

- Found in 5 of 25 (20.0%) of genes in pham
- Manual Annotations of this start: 1 of 20

- Called 40.0% of time when present
- Phage (with cluster) where this start called: Alone3_188 (BS), Talos_188 (BS),

Start 26:

- Found in 6 of 25 (24.0%) of genes in pham
- Manual Annotations of this start: 5 of 20
- Called 83.3% of time when present
- Phage (with cluster) where this start called: Annadreamy_222 (BK1), Kenrey_232 (BK1), Limpid_229 (BK1), NiceHouse_61 (CE), StarPlatinum_46 (BE2),

Start 31:

- Found in 2 of 25 (8.0%) of genes in pham
- Manual Annotations of this start: 2 of 20
- Called 100.0% of time when present
- Phage (with cluster) where this start called: Alyssamiracle_26 (DV), Genamy16_26 (DV),

Summary by clusters:

There are 9 clusters represented in this pham: CG, AL, CE, BE2, FC, BK1, BS, DV, DQ,

Info for manual annotations of cluster AL:

- Start number 20 was manually annotated 1 time for cluster AL.

Info for manual annotations of cluster BE2:

- Start number 26 was manually annotated 1 time for cluster BE2.

Info for manual annotations of cluster BK1:

- Start number 26 was manually annotated 3 times for cluster BK1.

Info for manual annotations of cluster BS:

- Start number 5 was manually annotated 1 time for cluster BS.
- Start number 19 was manually annotated 1 time for cluster BS.
- Start number 22 was manually annotated 1 time for cluster BS.
- Start number 24 was manually annotated 1 time for cluster BS.

Info for manual annotations of cluster CE:

- Start number 26 was manually annotated 1 time for cluster CE.

Info for manual annotations of cluster CG:

- Start number 23 was manually annotated 2 times for cluster CG.

Info for manual annotations of cluster DQ:

- Start number 21 was manually annotated 5 times for cluster DQ.
- Start number 22 was manually annotated 1 time for cluster DQ.

Info for manual annotations of cluster DV:

- Start number 31 was manually annotated 2 times for cluster DV.

Gene Information:

Gene: Alone3_216 Start: 111609, Stop: 111190, Start Num: 22

Candidate Starts for Alone3_216:

(Start: 22 @111609 has 2 MA's), (45, 111495), (53, 111435), (55, 111426), (73, 111309), (79, 111258),

Gene: Alone3_117 Start: 62982, Stop: 63413, Start Num: 19

Candidate Starts for Alone3_117:

(Start: 19 @62982 has 1 MA's), (34, 63033), (39, 63066), (55, 63177), (81, 63345), (84, 63357),

Gene: Alone3_188 Start: 97401, Stop: 96985, Start Num: 24

Candidate Starts for Alone3_188:

(Start: 24 @97401 has 1 MA's), (41, 97320), (52, 97230), (55, 97206), (74, 97071),

Gene: Alyssamiracle_26 Start: 15136, Stop: 15546, Start Num: 31

Candidate Starts for Alyssamiracle_26:

(27, 15115), (Start: 31 @15136 has 2 MA's), (37, 15160), (62, 15343), (70, 15403), (76, 15460), (78, 15469), (81, 15490), (86, 15511),

Gene: Annadreamy_222 Start: 109759, Stop: 110133, Start Num: 26

Candidate Starts for Annadreamy_222:

(Start: 24 @109753 has 1 MA's), (Start: 26 @109759 has 5 MA's), (28, 109768), (68, 110005), (73, 110047), (76, 110074), (77, 110080),

Gene: Beleetus_144 Start: 78377, Stop: 78778, Start Num: 19

Candidate Starts for Beleetus_144:

(Start: 19 @78377 has 1 MA's), (28, 78404), (59, 78578), (77, 78704), (88, 78764),

Gene: Chidiebere_129 Start: 90897, Stop: 90346, Start Num: 21

Candidate Starts for Chidiebere_129:

(7, 91011), (Start: 21 @90897 has 5 MA's), (39, 90816), (43, 90801), (61, 90651), (77, 90525), (80, 90504), (81, 90501),

Gene: Chidiebere_65 Start: 51821, Stop: 52273, Start Num: 21

Candidate Starts for Chidiebere_65:

(Start: 21 @51821 has 5 MA's), (40, 51905), (44, 51938), (46, 51947), (48, 51965), (56, 52043), (60, 52064), (61, 52067), (68, 52118), (73, 52160), (77, 52193), (81, 52217),

Gene: ChisanaKitsune_61 Start: 50595, Stop: 51047, Start Num: 21

Candidate Starts for ChisanaKitsune_61:

(18, 50577), (Start: 21 @50595 has 5 MA's), (29, 50628), (40, 50679), (44, 50712), (46, 50721), (54, 50793), (56, 50817), (60, 50838), (61, 50841), (68, 50892), (72, 50925), (73, 50934), (77, 50967), (81, 50991),

Gene: Dorin_76 Start: 59997, Stop: 60470, Start Num: 23

Candidate Starts for Dorin_76:

(Start: 23 @59997 has 2 MA's), (81, 60369),

Gene: Francesca_76 Start: 60735, Stop: 61208, Start Num: 23

Candidate Starts for Francesca_76:

(Start: 23 @60735 has 2 MA's), (38, 60798), (81, 61107),

Gene: Genamy16_26 Start: 15136, Stop: 15546, Start Num: 31

Candidate Starts for Genamy16_26:

(27, 15115), (Start: 31 @15136 has 2 MA's), (37, 15160), (62, 15343), (70, 15403), (76, 15460), (78, 15469), (81, 15490), (86, 15511),

Gene: GiJojo_184 Start: 101076, Stop: 101627, Start Num: 5

Candidate Starts for GiJojo_184:

(Start: 5 @101076 has 1 MA's), (11, 101130), (15, 101157), (17, 101187), (18, 101202), (25, 101229), (30, 101253), (35, 101274), (47, 101355), (69, 101472), (75, 101517), (85, 101580), (90, 101607),

Gene: Gray_65 Start: 51821, Stop: 52273, Start Num: 21

Candidate Starts for Gray_65:

(Start: 21 @51821 has 5 MA's), (40, 51905), (44, 51938), (46, 51947), (48, 51965), (56, 52043), (60, 52064), (61, 52067), (68, 52118), (73, 52160), (77, 52193), (81, 52217),

Gene: Kabocha_66 Start: 52633, Stop: 53085, Start Num: 21

Candidate Starts for Kabocha_66:

(Start: 21 @52633 has 5 MA's), (40, 52717), (44, 52750), (46, 52759), (48, 52777), (56, 52855), (60, 52876), (61, 52879), (68, 52930), (73, 52972), (77, 53005), (81, 53029),

Gene: Kenrey_232 Start: 111193, Stop: 111606, Start Num: 26

Candidate Starts for Kenrey_232:

(Start: 26 @111193 has 5 MA's), (38, 111241), (71, 111484), (76, 111523), (87, 111580),

Gene: Kovu_26 Start: 17736, Stop: 17326, Start Num: 20

Candidate Starts for Kovu_26:

(Start: 20 @17736 has 1 MA's), (Start: 22 @17733 has 2 MA's), (Start: 24 @17727 has 1 MA's), (Start: 26 @17721 has 5 MA's), (36, 17676), (38, 17667), (44, 17616), (49, 17574), (50, 17565), (58, 17520), (84, 17346),

Gene: Limpid_229 Start: 115072, Stop: 115446, Start Num: 26

Candidate Starts for Limpid_229:

(Start: 24 @115066 has 1 MA's), (Start: 26 @115072 has 5 MA's), (28, 115081), (68, 115318), (73, 115360), (76, 115387), (77, 115393),

Gene: NiceHouse_61 Start: 34862, Stop: 35269, Start Num: 26

Candidate Starts for NiceHouse_61:

(Start: 26 @34862 has 5 MA's), (40, 34934), (41, 34937), (55, 35027), (64, 35078), (82, 35207), (85, 35219),

Gene: Nova53_74 Start: 59567, Stop: 59971, Start Num: 23

Candidate Starts for Nova53_74:

(1, 59375), (2, 59384), (8, 59447), (12, 59474), (13, 59489), (14, 59492), (Start: 23 @59567 has 2 MA's), (32, 59603), (42, 59657), (55, 59753), (81, 59936), (83, 59942),

Gene: Patbob_79 Start: 44134, Stop: 43622, Start Num: 10

Candidate Starts for Patbob_79:

(9, 44146), (10, 44134), (16, 44077), (53, 43855), (57, 43825), (66, 43765), (76, 43687), (81, 43657),

Gene: ScarletRaider_127 Start: 92635, Stop: 92135, Start Num: 22

Candidate Starts for ScarletRaider_127:

(3, 92797), (4, 92782), (6, 92761), (Start: 22 @92635 has 2 MA's), (33, 92593), (44, 92521), (61, 92434), (63, 92431), (65, 92404), (76, 92314), (89, 92245),

Gene: StarPlatinum_46 Start: 22656, Stop: 23042, Start Num: 26

Candidate Starts for StarPlatinum_46:

(Start: 26 @22656 has 5 MA's), (51, 22809), (67, 22911), (73, 22953), (77, 22986), (80, 23007), (86, 23031),

Gene: Talos_215 Start: 109729, Stop: 109310, Start Num: 22

Candidate Starts for Talos_215:

(Start: 22 @109729 has 2 MA's), (45, 109615), (53, 109555), (55, 109546), (73, 109429), (79, 109378),

Gene: Talos_188 Start: 95931, Stop: 95515, Start Num: 24

Candidate Starts for Talos_188:

(Start: 24 @95931 has 1 MA's), (41, 95850), (52, 95760), (55, 95736), (74, 95601),