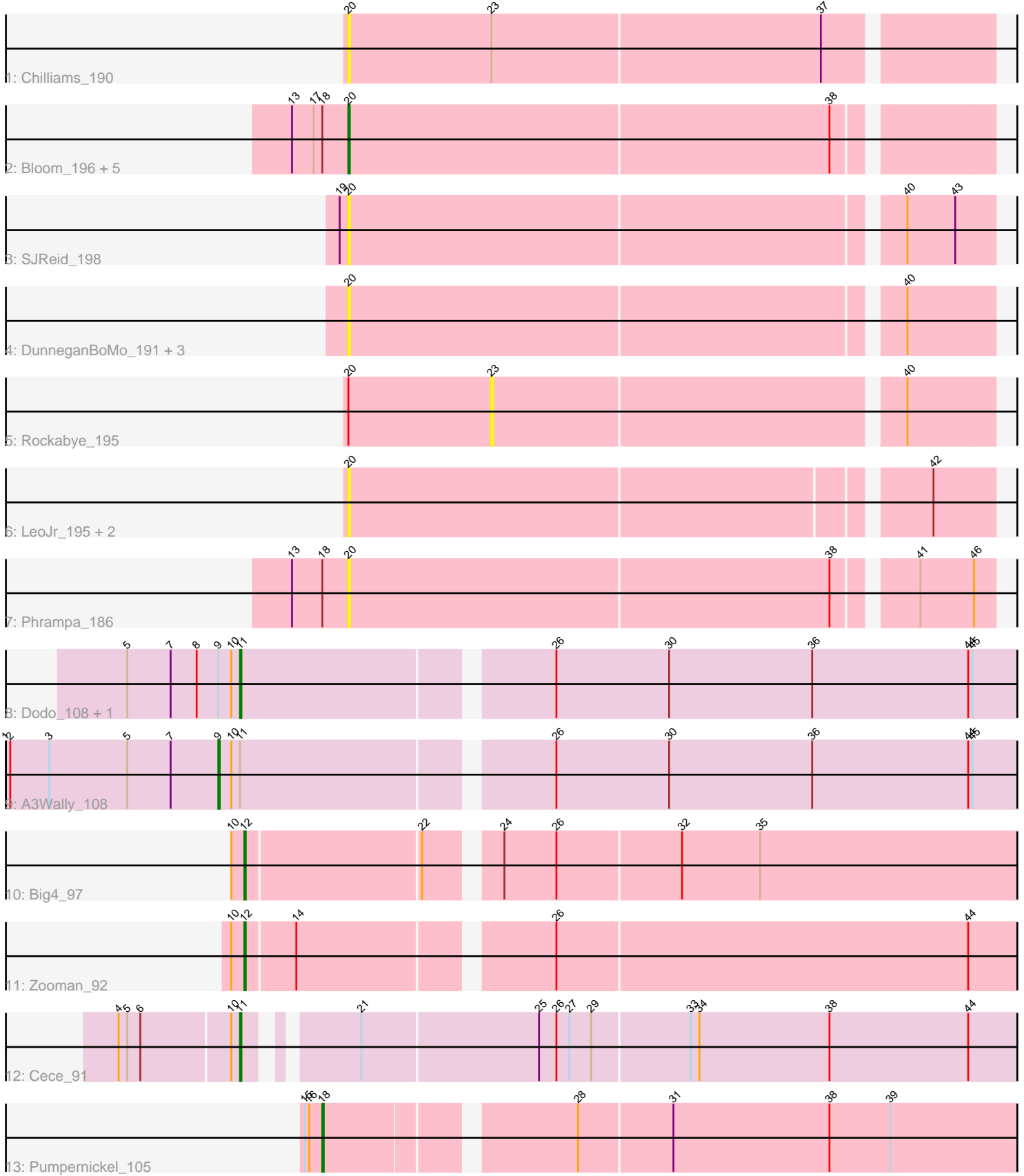


Pham 203264



Note: Tracks are now grouped by subcluster and scaled. Switching in subcluster is indicated by changes in track color. Track scale is now set by default to display the region 30 bp upstream of start 1 to 30 bp downstream of the last possible start. If this default region is judged to be packed too tightly with annotated starts, the track will be further scaled to only show that region of the ORF with annotated starts. This action will be indicated by adding "Zoomed" to the title. For starts, yellow indicates the location of called starts comprised solely of Glimmer/GeneMark auto-annotations, green indicates the location of called starts with at least 1 manual gene annotation.

Pham 203264 Report

This analysis was run 01/18/25 on database version 583.

Pham number 203264 has 24 members, 16 are drafts.

Phages represented in each track:

- Track 1 : Chilliams_190
- Track 2 : Bloom_196, Racecar_193, Talia1610_193, GoldenEssence_181, Patbob_191, Mimi_198
- Track 3 : SJReid_198
- Track 4 : DunneganBoMo_191, WaddleDee_191, KSunshine22_189, Ellewin_190
- Track 5 : Rockabye_195
- Track 6 : LeoJr_195, Atuin_192, ReginaGlobina_199
- Track 7 : Phrampa_186
- Track 8 : Dodo_108, PauloDiaboli_108
- Track 9 : A3Wally_108
- Track 10 : Big4_97
- Track 11 : Zooman_92
- Track 12 : Cece_91
- Track 13 : Pumpernickel_105

Summary of Final Annotations (See graph section above for start numbers):

The start number called the most often in the published annotations is 11, it was called in 2 of the 8 non-draft genes in the pham.

Genes that call this "Most Annotated" start:

- Cece_91, Dodo_108, PauloDiaboli_108,

Genes that have the "Most Annotated" start but do not call it:

- A3Wally_108,

Genes that do not have the "Most Annotated" start:

- Atuin_192, Big4_97, Bloom_196, Chilliams_190, DunneganBoMo_191, Ellewin_190, GoldenEssence_181, KSunshine22_189, LeoJr_195, Mimi_198, Patbob_191, Phrampa_186, Pumpernickel_105, Racecar_193, ReginaGlobina_199, Rockabye_195, SJReid_198, Talia1610_193, WaddleDee_191, Zooman_92,

Summary by start number:

Start 9:

- Found in 3 of 24 (12.5%) of genes in pham
- Manual Annotations of this start: 1 of 8
- Called 33.3% of time when present
- Phage (with cluster) where this start called: A3Wally_108 (GD1),

Start 11:

- Found in 4 of 24 (16.7%) of genes in pham
- Manual Annotations of this start: 2 of 8
- Called 75.0% of time when present
- Phage (with cluster) where this start called: Cece_91 (GD3), Dodo_108 (GD1), PauloDiaboli_108 (GD1),

Start 12:

- Found in 2 of 24 (8.3%) of genes in pham
- Manual Annotations of this start: 2 of 8
- Called 100.0% of time when present
- Phage (with cluster) where this start called: Big4_97 (GD2), Zooman_92 (GD2),

Start 18:

- Found in 8 of 24 (33.3%) of genes in pham
- Manual Annotations of this start: 1 of 8
- Called 12.5% of time when present
- Phage (with cluster) where this start called: Pumpernickel_105 (GD4),

Start 20:

- Found in 17 of 24 (70.8%) of genes in pham
- Manual Annotations of this start: 2 of 8
- Called 94.1% of time when present
- Phage (with cluster) where this start called: Atuin_192 (FC), Bloom_196 (FC), Chilliams_190 (FC), DunneganBoMo_191 (FC), Ellewin_190 (FC), GoldenEssence_181 (FC), KSunshine22_189 (FC), LeoJr_195 (FC), Mimi_198 (FC), Patbob_191 (FC), Phrampa_186 (FC), Racecar_193 (FC), ReginaGlobina_199 (FC), SJReid_198 (FC), Talia1610_193 (FC), WaddleDee_191 (FC),

Start 23:

- Found in 2 of 24 (8.3%) of genes in pham
- No Manual Annotations of this start.
- Called 50.0% of time when present
- Phage (with cluster) where this start called: Rockabye_195 (FC),

Summary by clusters:

There are 5 clusters represented in this pham: GD3, GD1, GD2, FC, GD4,

Info for manual annotations of cluster FC:

- Start number 20 was manually annotated 2 times for cluster FC.

Info for manual annotations of cluster GD1:

- Start number 9 was manually annotated 1 time for cluster GD1.
- Start number 11 was manually annotated 1 time for cluster GD1.

Info for manual annotations of cluster GD2:

•Start number 12 was manually annotated 2 times for cluster GD2.

Info for manual annotations of cluster GD3:

•Start number 11 was manually annotated 1 time for cluster GD3.

Info for manual annotations of cluster GD4:

•Start number 18 was manually annotated 1 time for cluster GD4.

Gene Information:

Gene: A3Wally_108 Start: 73992, Stop: 73408, Start Num: 9

Candidate Starts for A3Wally_108:

(1, 74139), (2, 74136), (3, 74109), (5, 74055), (7, 74025), (Start: 9 @73992 has 1 MA's), (10, 73983), (Start: 11 @73977 has 2 MA's), (26, 73776), (30, 73698), (36, 73599), (44, 73491), (45, 73488),

Gene: Atuin_192 Start: 131620, Stop: 132045, Start Num: 20

Candidate Starts for Atuin_192:

(Start: 20 @131620 has 2 MA's), (42, 132004),

Gene: Big4_97 Start: 73090, Stop: 72530, Start Num: 12

Candidate Starts for Big4_97:

(10, 73099), (Start: 12 @73090 has 2 MA's), (22, 72973), (24, 72931), (26, 72895), (32, 72811), (35, 72757),

Gene: Bloom_196 Start: 132945, Stop: 133373, Start Num: 20

Candidate Starts for Bloom_196:

(13, 132906), (17, 132921), (Start: 18 @132927 has 1 MA's), (Start: 20 @132945 has 2 MA's), (38, 133275),

Gene: Cece_91 Start: 76156, Stop: 75599, Start Num: 11

Candidate Starts for Cece_91:

(4, 76237), (5, 76231), (6, 76222), (10, 76162), (Start: 11 @76156 has 2 MA's), (21, 76096), (25, 75976), (26, 75964), (27, 75955), (29, 75940), (33, 75874), (34, 75868), (38, 75778), (44, 75682),

Gene: Chilliams_190 Start: 128904, Stop: 129335, Start Num: 20

Candidate Starts for Chilliams_190:

(Start: 20 @128904 has 2 MA's), (23, 129003), (37, 129228),

Gene: Dodo_108 Start: 74299, Stop: 73730, Start Num: 11

Candidate Starts for Dodo_108:

(5, 74377), (7, 74347), (8, 74329), (Start: 9 @74314 has 1 MA's), (10, 74305), (Start: 11 @74299 has 2 MA's), (26, 74098), (30, 74020), (36, 73921), (44, 73813), (45, 73810),

Gene: DunneganBoMo_191 Start: 136342, Stop: 136770, Start Num: 20

Candidate Starts for DunneganBoMo_191:

(Start: 20 @136342 has 2 MA's), (40, 136711),

Gene: Ellewin_190 Start: 136420, Stop: 136848, Start Num: 20

Candidate Starts for Ellewin_190:

(Start: 20 @136420 has 2 MA's), (40, 136789),

Gene: GoldenEssence_181 Start: 127156, Stop: 127584, Start Num: 20
Candidate Starts for GoldenEssence_181:
(13, 127117), (17, 127132), (Start: 18 @127138 has 1 MA's), (Start: 20 @127156 has 2 MA's), (38, 127486),

Gene: KSunshine22_189 Start: 135437, Stop: 135865, Start Num: 20
Candidate Starts for KSunshine22_189:
(Start: 20 @135437 has 2 MA's), (40, 135806),

Gene: LeoJr_195 Start: 132174, Stop: 132599, Start Num: 20
Candidate Starts for LeoJr_195:
(Start: 20 @132174 has 2 MA's), (42, 132558),

Gene: Mimi_198 Start: 132565, Stop: 132993, Start Num: 20
Candidate Starts for Mimi_198:
(13, 132526), (17, 132541), (Start: 18 @132547 has 1 MA's), (Start: 20 @132565 has 2 MA's), (38, 132895),

Gene: Patbob_191 Start: 132952, Stop: 133380, Start Num: 20
Candidate Starts for Patbob_191:
(13, 132913), (17, 132928), (Start: 18 @132934 has 1 MA's), (Start: 20 @132952 has 2 MA's), (38, 133282),

Gene: PauloDiaboli_108 Start: 73334, Stop: 72765, Start Num: 11
Candidate Starts for PauloDiaboli_108:
(5, 73412), (7, 73382), (8, 73364), (Start: 9 @73349 has 1 MA's), (10, 73340), (Start: 11 @73334 has 2 MA's), (26, 73133), (30, 73055), (36, 72956), (44, 72848), (45, 72845),

Gene: Phrampa_186 Start: 132316, Stop: 132744, Start Num: 20
Candidate Starts for Phrampa_186:
(13, 132277), (Start: 18 @132298 has 1 MA's), (Start: 20 @132316 has 2 MA's), (38, 132646), (41, 132694), (46, 132730),

Gene: Pumpernickel_105 Start: 74888, Stop: 74379, Start Num: 18
Candidate Starts for Pumpernickel_105:
(15, 74900), (16, 74897), (Start: 18 @74888 has 1 MA's), (28, 74732), (31, 74669), (38, 74561), (39, 74519),

Gene: Racecar_193 Start: 132728, Stop: 133156, Start Num: 20
Candidate Starts for Racecar_193:
(13, 132689), (17, 132704), (Start: 18 @132710 has 1 MA's), (Start: 20 @132728 has 2 MA's), (38, 133058),

Gene: ReginaGlobina_199 Start: 133457, Stop: 133882, Start Num: 20
Candidate Starts for ReginaGlobina_199:
(Start: 20 @133457 has 2 MA's), (42, 133841),

Gene: Rockabye_195 Start: 127782, Stop: 128114, Start Num: 23
Candidate Starts for Rockabye_195:
(Start: 20 @127683 has 2 MA's), (23, 127782), (40, 128055),

Gene: SJReid_198 Start: 126517, Stop: 126945, Start Num: 20
Candidate Starts for SJReid_198:

(19, 126511), (Start: 20 @126517 has 2 MA's), (40, 126886), (43, 126919),

Gene: Talia1610_193 Start: 133024, Stop: 133452, Start Num: 20

Candidate Starts for Talia1610_193:

(13, 132985), (17, 133000), (Start: 18 @133006 has 1 MA's), (Start: 20 @133024 has 2 MA's), (38, 133354),

Gene: WaddleDee_191 Start: 135615, Stop: 136043, Start Num: 20

Candidate Starts for WaddleDee_191:

(Start: 20 @135615 has 2 MA's), (40, 135984),

Gene: Zooman_92 Start: 70938, Stop: 70378, Start Num: 12

Candidate Starts for Zooman_92:

(10, 70947), (Start: 12 @70938 has 2 MA's), (14, 70905), (26, 70743), (44, 70461),