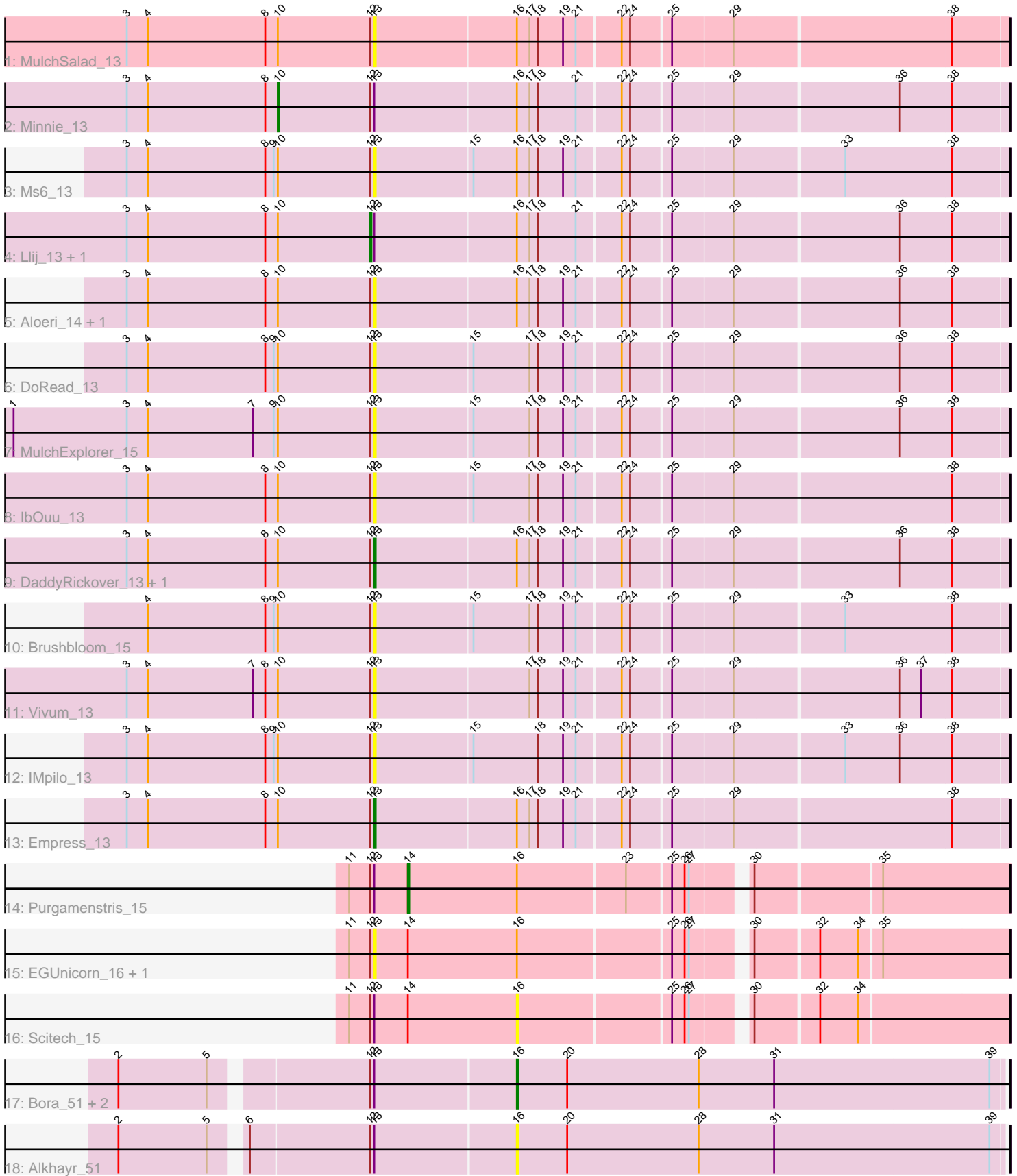


Pham 203267



Note: Tracks are now grouped by subcluster and scaled. Switching in subcluster is indicated by changes in track color. Track scale is now set by default to display the region 30 bp upstream of start 1 to 30 bp downstream of the last possible start. If this default region is judged to be packed too tightly with annotated starts, the track will be further scaled to only show that region of the ORF with annotated starts. This action will be indicated by adding "Zoomed" to the title. For starts, yellow indicates the location of called starts comprised solely of Glimmer/GeneMark auto-annotations, green indicates the location of called starts with at least 1 manual gene annotation.

Pham 203267 Report

This analysis was run 01/18/25 on database version 583.

Pham number 203267 has 24 members, 16 are drafts.

Phages represented in each track:

- Track 1 : MulchSalad_13
- Track 2 : Minnie_13
- Track 3 : Ms6_13
- Track 4 : Llij_13, PMC_13
- Track 5 : Aloeri_14, ChickenDinner_14
- Track 6 : DoRead_13
- Track 7 : MulchExplorer_15
- Track 8 : IbOuu_13
- Track 9 : DaddyRickover_13, RedBird_13
- Track 10 : Brushbloom_15
- Track 11 : Vivum_13
- Track 12 : IMpilo_13
- Track 13 : Empress_13
- Track 14 : Purgamenstris_15
- Track 15 : EGUnicorn_16, Bosection6_15
- Track 16 : Scitech_15
- Track 17 : Bora_51, MadKillah_54, Zebo_52
- Track 18 : Alkhayr_51

Summary of Final Annotations (See graph section above for start numbers):

The start number called the most often in the published annotations is 13, it was called in 2 of the 8 non-draft genes in the pham.

Genes that call this "Most Annotated" start:

- Aloeri_14, Bosection6_15, Brushbloom_15, ChickenDinner_14, DaddyRickover_13, DoRead_13, EGUnicorn_16, Empress_13, IMpilo_13, IbOuu_13, Ms6_13, MulchExplorer_15, MulchSalad_13, RedBird_13, Vivum_13,

Genes that have the "Most Annotated" start but do not call it:

- Alkhayr_51, Bora_51, Llij_13, MadKillah_54, Minnie_13, PMC_13, Purgamenstris_15, Scitech_15, Zebo_52,

Genes that do not have the "Most Annotated" start:

•

Summary by start number:

Start 10:

- Found in 16 of 24 (66.7%) of genes in pham
- Manual Annotations of this start: 1 of 8
- Called 6.2% of time when present
- Phage (with cluster) where this start called: Minnie_13 (F1),

Start 12:

- Found in 24 of 24 (100.0%) of genes in pham
- Manual Annotations of this start: 2 of 8
- Called 8.3% of time when present
- Phage (with cluster) where this start called: Llij_13 (F1), PMC_13 (F1),

Start 13:

- Found in 24 of 24 (100.0%) of genes in pham
- Manual Annotations of this start: 2 of 8
- Called 62.5% of time when present
- Phage (with cluster) where this start called: Aloeri_14 (F1), Bosection6_15 (N), Brushbloom_15 (F1), ChickenDinner_14 (F1), DaddyRickover_13 (F1), DoRead_13 (F1), EGUnicorn_16 (N), Empress_13 (F1), IMpilo_13 (F1), IbOuu_13 (F1), Ms6_13 (F1), MulchExplorer_15 (F1), MulchSalad_13 (F), RedBird_13 (F1), Vivum_13 (F1),

Start 14:

- Found in 4 of 24 (16.7%) of genes in pham
- Manual Annotations of this start: 1 of 8
- Called 25.0% of time when present
- Phage (with cluster) where this start called: Purgamenstris_15 (N),

Start 16:

- Found in 18 of 24 (75.0%) of genes in pham
- Manual Annotations of this start: 2 of 8
- Called 27.8% of time when present
- Phage (with cluster) where this start called: Alkhayr_51 (O), Bora_51 (O), MadKillah_54 (O), Scitech_15 (N), Zebo_52 (O),

Summary by clusters:

There are 4 clusters represented in this pham: F1, F, O, N,

Info for manual annotations of cluster F1:

- Start number 10 was manually annotated 1 time for cluster F1.
- Start number 12 was manually annotated 2 times for cluster F1.
- Start number 13 was manually annotated 2 times for cluster F1.

Info for manual annotations of cluster N:

- Start number 14 was manually annotated 1 time for cluster N.

Info for manual annotations of cluster O:

- Start number 16 was manually annotated 2 times for cluster O.

Gene Information:

Gene: Alkhayr_51 Start: 26266, Stop: 26610, Start Num: 16

Candidate Starts for Alkhayr_51:

(2, 25999), (5, 26062), (6, 26080), (Start: 12 @26164 has 2 MA's), (Start: 13 @26167 has 2 MA's), (Start: 16 @26266 has 2 MA's), (20, 26302), (28, 26395), (31, 26449), (39, 26602),

Gene: Aloeri_14 Start: 8901, Stop: 9335, Start Num: 13

Candidate Starts for Aloeri_14:

(3, 8724), (4, 8739), (8, 8823), (Start: 10 @8832 has 1 MA's), (Start: 12 @8898 has 2 MA's), (Start: 13 @8901 has 2 MA's), (Start: 16 @9000 has 2 MA's), (17, 9009), (18, 9015), (19, 9033), (21, 9042), (22, 9072), (24, 9078), (25, 9105), (29, 9147), (36, 9261), (38, 9297),

Gene: Bora_51 Start: 26228, Stop: 26572, Start Num: 16

Candidate Starts for Bora_51:

(2, 25961), (5, 26024), (Start: 12 @26126 has 2 MA's), (Start: 13 @26129 has 2 MA's), (Start: 16 @26228 has 2 MA's), (20, 26264), (28, 26357), (31, 26411), (39, 26564),

Gene: Bosection6_15 Start: 9517, Stop: 9942, Start Num: 13

Candidate Starts for Bosection6_15:

(11, 9499), (Start: 12 @9514 has 2 MA's), (Start: 13 @9517 has 2 MA's), (Start: 14 @9541 has 1 MA's), (Start: 16 @9619 has 2 MA's), (25, 9724), (26, 9733), (27, 9736), (30, 9769), (32, 9811), (34, 9838), (35, 9853),

Gene: Brushbloom_15 Start: 8911, Stop: 9345, Start Num: 13

Candidate Starts for Brushbloom_15:

(4, 8749), (8, 8833), (9, 8839), (Start: 10 @8842 has 1 MA's), (Start: 12 @8908 has 2 MA's), (Start: 13 @8911 has 2 MA's), (15, 8980), (17, 9019), (18, 9025), (19, 9043), (21, 9052), (22, 9082), (24, 9088), (25, 9115), (29, 9157), (33, 9232), (38, 9307),

Gene: ChickenDinner_14 Start: 8901, Stop: 9335, Start Num: 13

Candidate Starts for ChickenDinner_14:

(3, 8724), (4, 8739), (8, 8823), (Start: 10 @8832 has 1 MA's), (Start: 12 @8898 has 2 MA's), (Start: 13 @8901 has 2 MA's), (Start: 16 @9000 has 2 MA's), (17, 9009), (18, 9015), (19, 9033), (21, 9042), (22, 9072), (24, 9078), (25, 9105), (29, 9147), (36, 9261), (38, 9297),

Gene: DaddyRickover_13 Start: 9034, Stop: 9468, Start Num: 13

Candidate Starts for DaddyRickover_13:

(3, 8857), (4, 8872), (8, 8956), (Start: 10 @8965 has 1 MA's), (Start: 12 @9031 has 2 MA's), (Start: 13 @9034 has 2 MA's), (Start: 16 @9133 has 2 MA's), (17, 9142), (18, 9148), (19, 9166), (21, 9175), (22, 9205), (24, 9211), (25, 9238), (29, 9280), (36, 9394), (38, 9430),

Gene: DoRead_13 Start: 9036, Stop: 9470, Start Num: 13

Candidate Starts for DoRead_13:

(3, 8859), (4, 8874), (8, 8958), (9, 8964), (Start: 10 @8967 has 1 MA's), (Start: 12 @9033 has 2 MA's), (Start: 13 @9036 has 2 MA's), (15, 9105), (17, 9144), (18, 9150), (19, 9168), (21, 9177), (22, 9207), (24, 9213), (25, 9240), (29, 9282), (36, 9396), (38, 9432),

Gene: EGUnicorn_16 Start: 9517, Stop: 9942, Start Num: 13

Candidate Starts for EGUnicorn_16:

(11, 9499), (Start: 12 @9514 has 2 MA's), (Start: 13 @9517 has 2 MA's), (Start: 14 @9541 has 1 MA's), (Start: 16 @9619 has 2 MA's), (25, 9724), (26, 9733), (27, 9736), (30, 9769), (32, 9811), (34, 9838), (35, 9853),

Gene: Empress_13 Start: 9055, Stop: 9489, Start Num: 13

Candidate Starts for Empress_13:

(3, 8878), (4, 8893), (8, 8977), (Start: 10 @8986 has 1 MA's), (Start: 12 @9052 has 2 MA's), (Start: 13 @9055 has 2 MA's), (Start: 16 @9154 has 2 MA's), (17, 9163), (18, 9169), (19, 9187), (21, 9196), (22, 9226), (24, 9232), (25, 9259), (29, 9301), (38, 9451),

Gene: IMpilo_13 Start: 9064, Stop: 9498, Start Num: 13

Candidate Starts for IMpilo_13:

(3, 8887), (4, 8902), (8, 8986), (9, 8992), (Start: 10 @8995 has 1 MA's), (Start: 12 @9061 has 2 MA's), (Start: 13 @9064 has 2 MA's), (15, 9133), (18, 9178), (19, 9196), (21, 9205), (22, 9235), (24, 9241), (25, 9268), (29, 9310), (33, 9385), (36, 9424), (38, 9460),

Gene: lbOuu_13 Start: 9033, Stop: 9467, Start Num: 13

Candidate Starts for lbOuu_13:

(3, 8856), (4, 8871), (8, 8955), (Start: 10 @8964 has 1 MA's), (Start: 12 @9030 has 2 MA's), (Start: 13 @9033 has 2 MA's), (15, 9102), (17, 9141), (18, 9147), (19, 9165), (21, 9174), (22, 9204), (24, 9210), (25, 9237), (29, 9279), (38, 9429),

Gene: Llij_13 Start: 9048, Stop: 9485, Start Num: 12

Candidate Starts for Llij_13:

(3, 8874), (4, 8889), (8, 8973), (Start: 10 @8982 has 1 MA's), (Start: 12 @9048 has 2 MA's), (Start: 13 @9051 has 2 MA's), (Start: 16 @9150 has 2 MA's), (17, 9159), (18, 9165), (21, 9192), (22, 9222), (24, 9228), (25, 9255), (29, 9297), (36, 9411), (38, 9447),

Gene: MadKillah_54 Start: 26293, Stop: 26637, Start Num: 16

Candidate Starts for MadKillah_54:

(2, 26026), (5, 26089), (Start: 12 @26191 has 2 MA's), (Start: 13 @26194 has 2 MA's), (Start: 16 @26293 has 2 MA's), (20, 26329), (28, 26422), (31, 26476), (39, 26629),

Gene: Minnie_13 Start: 8982, Stop: 9485, Start Num: 10

Candidate Starts for Minnie_13:

(3, 8874), (4, 8889), (8, 8973), (Start: 10 @8982 has 1 MA's), (Start: 12 @9048 has 2 MA's), (Start: 13 @9051 has 2 MA's), (Start: 16 @9150 has 2 MA's), (17, 9159), (18, 9165), (21, 9192), (22, 9222), (24, 9228), (25, 9255), (29, 9297), (36, 9411), (38, 9447),

Gene: Ms6_13 Start: 9079, Stop: 9513, Start Num: 13

Candidate Starts for Ms6_13:

(3, 8902), (4, 8917), (8, 9001), (9, 9007), (Start: 10 @9010 has 1 MA's), (Start: 12 @9076 has 2 MA's), (Start: 13 @9079 has 2 MA's), (15, 9148), (Start: 16 @9178 has 2 MA's), (17, 9187), (18, 9193), (19, 9211), (21, 9220), (22, 9250), (24, 9256), (25, 9283), (29, 9325), (33, 9400), (38, 9475),

Gene: MulchExplorer_15 Start: 8893, Stop: 9327, Start Num: 13

Candidate Starts for MulchExplorer_15:

(1, 8635), (3, 8716), (4, 8731), (7, 8806), (9, 8821), (Start: 10 @8824 has 1 MA's), (Start: 12 @8890 has 2 MA's), (Start: 13 @8893 has 2 MA's), (15, 8962), (17, 9001), (18, 9007), (19, 9025), (21, 9034), (22, 9064), (24, 9070), (25, 9097), (29, 9139), (36, 9253), (38, 9289),

Gene: MulchSalad_13 Start: 9051, Stop: 9485, Start Num: 13

Candidate Starts for MulchSalad_13:

(3, 8874), (4, 8889), (8, 8973), (Start: 10 @8982 has 1 MA's), (Start: 12 @9048 has 2 MA's), (Start: 13 @9051 has 2 MA's), (Start: 16 @9150 has 2 MA's), (17, 9159), (18, 9165), (19, 9183), (21, 9192), (22, 9222), (24, 9228), (25, 9255), (29, 9297), (38, 9447),

Gene: PMC_13 Start: 9048, Stop: 9485, Start Num: 12

Candidate Starts for PMC_13:

(3, 8874), (4, 8889), (8, 8973), (Start: 10 @8982 has 1 MA's), (Start: 12 @9048 has 2 MA's), (Start: 13 @9051 has 2 MA's), (Start: 16 @9150 has 2 MA's), (17, 9159), (18, 9165), (21, 9192), (22, 9222), (24, 9228), (25, 9255), (29, 9297), (36, 9411), (38, 9447),

Gene: Purgamenstris_15 Start: 9586, Stop: 9987, Start Num: 14

Candidate Starts for Purgamenstris_15:

(11, 9544), (Start: 12 @9559 has 2 MA's), (Start: 13 @9562 has 2 MA's), (Start: 14 @9586 has 1 MA's), (Start: 16 @9664 has 2 MA's), (23, 9739), (25, 9769), (26, 9778), (27, 9781), (30, 9814), (35, 9898),

Gene: RedBird_13 Start: 9034, Stop: 9468, Start Num: 13

Candidate Starts for RedBird_13:

(3, 8857), (4, 8872), (8, 8956), (Start: 10 @8965 has 1 MA's), (Start: 12 @9031 has 2 MA's), (Start: 13 @9034 has 2 MA's), (Start: 16 @9133 has 2 MA's), (17, 9142), (18, 9148), (19, 9166), (21, 9175), (22, 9205), (24, 9211), (25, 9238), (29, 9280), (36, 9394), (38, 9430),

Gene: Scitech_15 Start: 9619, Stop: 9942, Start Num: 16

Candidate Starts for Scitech_15:

(11, 9499), (Start: 12 @9514 has 2 MA's), (Start: 13 @9517 has 2 MA's), (Start: 14 @9541 has 1 MA's), (Start: 16 @9619 has 2 MA's), (25, 9724), (26, 9733), (27, 9736), (30, 9769), (32, 9811), (34, 9838),

Gene: Vivum_13 Start: 9041, Stop: 9475, Start Num: 13

Candidate Starts for Vivum_13:

(3, 8864), (4, 8879), (7, 8954), (8, 8963), (Start: 10 @8972 has 1 MA's), (Start: 12 @9038 has 2 MA's), (Start: 13 @9041 has 2 MA's), (17, 9149), (18, 9155), (19, 9173), (21, 9182), (22, 9212), (24, 9218), (25, 9245), (29, 9287), (36, 9401), (37, 9416), (38, 9437),

Gene: Zebo_52 Start: 26357, Stop: 26701, Start Num: 16

Candidate Starts for Zebo_52:

(2, 26090), (5, 26153), (Start: 12 @26255 has 2 MA's), (Start: 13 @26258 has 2 MA's), (Start: 16 @26357 has 2 MA's), (20, 26393), (28, 26486), (31, 26540), (39, 26693),