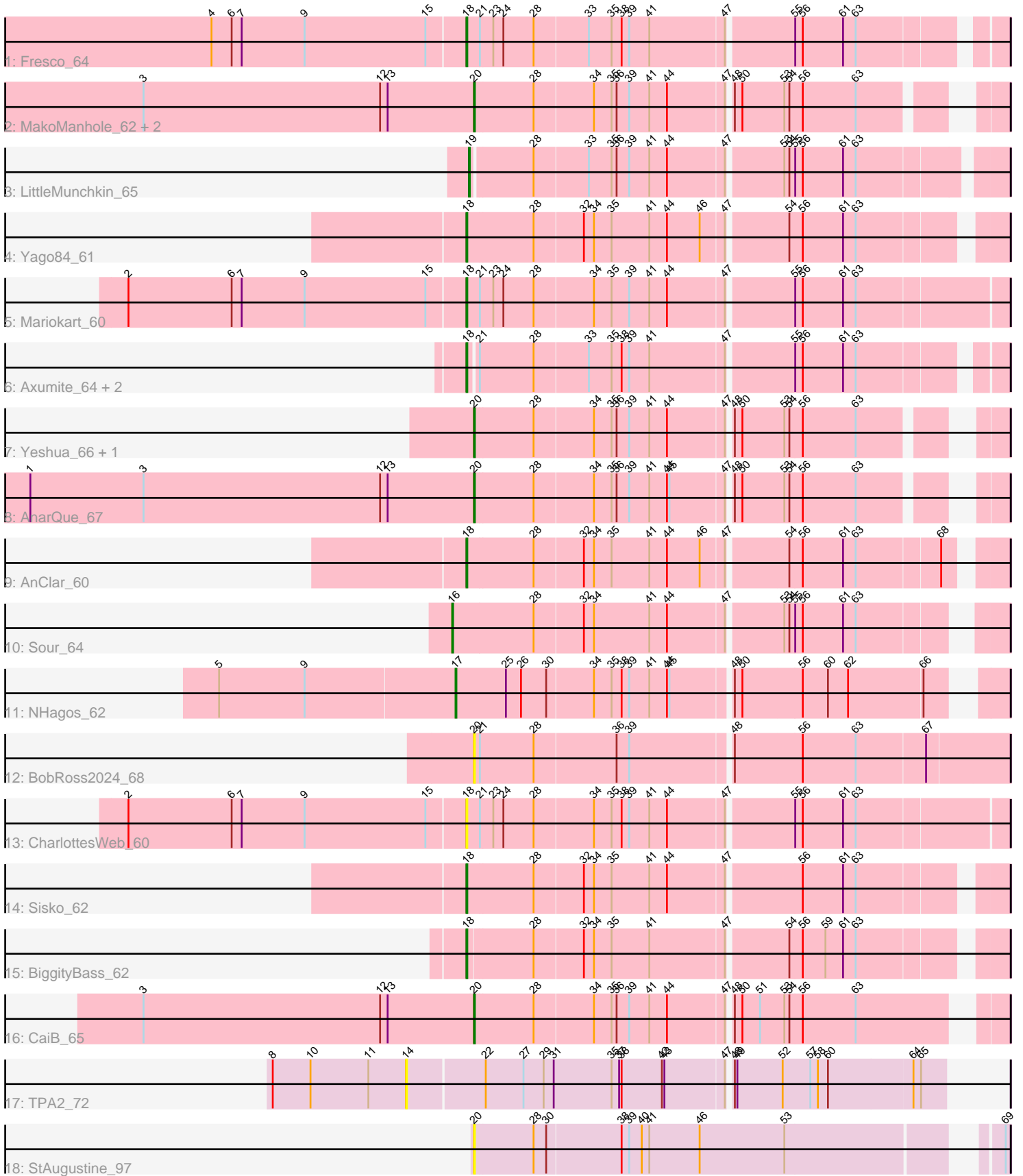


Pham 203274



Note: Tracks are now grouped by subcluster and scaled. Switching in subcluster is indicated by changes in track color. Track scale is now set by default to display the region 30 bp upstream of start 1 to 30 bp downstream of the last possible start. If this default region is judged to be packed too tightly with annotated starts, the track will be further scaled to only show that region of the ORF with annotated starts. This action will be indicated by adding "Zoomed" to the title. For starts, yellow indicates the location of called starts comprised solely of Glimmer/GeneMark auto-annotations, green indicates the location of called starts with at least 1 manual gene annotation.

Pham 203274 Report

This analysis was run 01/18/25 on database version 583.

Pham number 203274 has 23 members, 5 are drafts.

Phages represented in each track:

- Track 1 : Fresco_64
- Track 2 : MakoManhole_62, CloverMinnie_64, MossRose_65
- Track 3 : LittleMunchkin_65
- Track 4 : Yago84_61
- Track 5 : Mariokart_60
- Track 6 : Axumite_64, Shatter_64, Ligma_64
- Track 7 : Yeshua_66, Wooper_66
- Track 8 : AnarQue_67
- Track 9 : AnClar_60
- Track 10 : Sour_64
- Track 11 : NHagos_62
- Track 12 : BobRoss2024_68
- Track 13 : CharlottesWeb_60
- Track 14 : Sisko_62
- Track 15 : BiggityBass_62
- Track 16 : CaiB_65
- Track 17 : TPA2_72
- Track 18 : StAugustine_97

Summary of Final Annotations (See graph section above for start numbers):

The start number called the most often in the published annotations is 18, it was called in 9 of the 18 non-draft genes in the pham.

Genes that call this "Most Annotated" start:

- AnClar_60, Axumite_64, BiggityBass_62, CharlottesWeb_60, Fresco_64, Ligma_64, Mariokart_60, Shatter_64, Sisko_62, Yago84_61,

Genes that have the "Most Annotated" start but do not call it:

-

Genes that do not have the "Most Annotated" start:

- AnarQue_67, BobRoss2024_68, CaiB_65, CloverMinnie_64, LittleMunchkin_65, MakoManhole_62, MossRose_65, NHagos_62, Sour_64, StAugustine_97, TPA2_72,

Wooper_66, Yeshua_66,

Summary by start number:

Start 14:

- Found in 1 of 23 (4.3%) of genes in pham
- No Manual Annotations of this start.
- Called 100.0% of time when present
- Phage (with cluster) where this start called: TPA2_72 (singleton),

Start 16:

- Found in 1 of 23 (4.3%) of genes in pham
- Manual Annotations of this start: 1 of 18
- Called 100.0% of time when present
- Phage (with cluster) where this start called: Sour_64 (DR),

Start 17:

- Found in 1 of 23 (4.3%) of genes in pham
- Manual Annotations of this start: 1 of 18
- Called 100.0% of time when present
- Phage (with cluster) where this start called: NHagos_62 (DR),

Start 18:

- Found in 10 of 23 (43.5%) of genes in pham
- Manual Annotations of this start: 9 of 18
- Called 100.0% of time when present
- Phage (with cluster) where this start called: AnClar_60 (DR), Axumite_64 (DR), BiggityBass_62 (DR), CharlottesWeb_60 (DR), Fresco_64 (DR), Ligma_64 (DR), Mariokart_60 (DR), Shatter_64 (DR), Sisko_62 (DR), Yago84_61 (DR),

Start 19:

- Found in 1 of 23 (4.3%) of genes in pham
- Manual Annotations of this start: 1 of 18
- Called 100.0% of time when present
- Phage (with cluster) where this start called: LittleMunchkin_65 (DR),

Start 20:

- Found in 9 of 23 (39.1%) of genes in pham
- Manual Annotations of this start: 6 of 18
- Called 100.0% of time when present
- Phage (with cluster) where this start called: AnarQue_67 (DR), BobRoss2024_68 (DR), CaiB_65 (DR), CloverMinnie_64 (DR), MakoManhole_62 (DR), MossRose_65 (DR), StAugustine_97 (singleton), Wooper_66 (DR), Yeshua_66 (DR),

Summary by clusters:

There are 2 clusters represented in this pham: singleton, DR,

Info for manual annotations of cluster DR:

- Start number 16 was manually annotated 1 time for cluster DR.
- Start number 17 was manually annotated 1 time for cluster DR.
- Start number 18 was manually annotated 9 times for cluster DR.
- Start number 19 was manually annotated 1 time for cluster DR.

- Start number 20 was manually annotated 6 times for cluster DR.

Gene Information:

Gene: AnClar_60 Start: 52491, Stop: 53087, Start Num: 18

Candidate Starts for AnClar_60:

(Start: 18 @52491 has 9 MA's), (28, 52569), (32, 52626), (34, 52638), (35, 52659), (41, 52704), (44, 52725), (46, 52764), (47, 52791), (54, 52857), (56, 52872), (61, 52920), (63, 52935), (68, 53031),

Gene: AnarQue_67 Start: 53185, Stop: 53751, Start Num: 20

Candidate Starts for AnarQue_67:

(1, 52657), (3, 52792), (12, 53074), (13, 53083), (Start: 20 @53185 has 6 MA's), (28, 53254), (34, 53323), (35, 53344), (36, 53350), (39, 53365), (41, 53389), (44, 53410), (45, 53413), (47, 53476), (48, 53479), (50, 53488), (53, 53536), (54, 53542), (56, 53557), (63, 53620),

Gene: Axumite_64 Start: 51329, Stop: 51919, Start Num: 18

Candidate Starts for Axumite_64:

(Start: 18 @51329 has 9 MA's), (21, 51338), (28, 51401), (33, 51464), (35, 51491), (38, 51503), (39, 51512), (41, 51536), (47, 51623), (55, 51695), (56, 51704), (61, 51752), (63, 51767),

Gene: BiggityBass_62 Start: 53047, Stop: 53640, Start Num: 18

Candidate Starts for BiggityBass_62:

(Start: 18 @53047 has 9 MA's), (28, 53122), (32, 53179), (34, 53191), (35, 53212), (41, 53257), (47, 53344), (54, 53410), (56, 53425), (59, 53452), (61, 53473), (63, 53488),

Gene: BobRoss2024_68 Start: 52748, Stop: 53359, Start Num: 20

Candidate Starts for BobRoss2024_68:

(Start: 20 @52748 has 6 MA's), (21, 52754), (28, 52817), (36, 52913), (39, 52928), (48, 53042), (56, 53120), (63, 53183), (67, 53264),

Gene: CaiB_65 Start: 52969, Stop: 53550, Start Num: 20

Candidate Starts for CaiB_65:

(3, 52576), (12, 52858), (13, 52867), (Start: 20 @52969 has 6 MA's), (28, 53038), (34, 53107), (35, 53128), (36, 53134), (39, 53149), (41, 53173), (44, 53194), (47, 53260), (48, 53263), (50, 53272), (51, 53293), (53, 53320), (54, 53326), (56, 53341), (63, 53404),

Gene: CharlottesWeb_60 Start: 49910, Stop: 50527, Start Num: 18

Candidate Starts for CharlottesWeb_60:

(2, 49511), (6, 49634), (7, 49646), (9, 49721), (15, 49865), (Start: 18 @49910 has 9 MA's), (21, 49925), (23, 49940), (24, 49952), (28, 49988), (34, 50057), (35, 50078), (38, 50090), (39, 50099), (41, 50123), (44, 50144), (47, 50210), (55, 50282), (56, 50291), (61, 50339), (63, 50354),

Gene: CloverMinnie_64 Start: 52132, Stop: 52713, Start Num: 20

Candidate Starts for CloverMinnie_64:

(3, 51739), (12, 52021), (13, 52030), (Start: 20 @52132 has 6 MA's), (28, 52201), (34, 52270), (35, 52291), (36, 52297), (39, 52312), (41, 52336), (44, 52357), (47, 52423), (48, 52426), (50, 52435), (53, 52483), (54, 52489), (56, 52504), (63, 52567),

Gene: Fresco_64 Start: 51329, Stop: 51925, Start Num: 18

Candidate Starts for Fresco_64:

(4, 51029), (6, 51053), (7, 51065), (9, 51140), (15, 51284), (Start: 18 @51329 has 9 MA's), (21, 51344), (23, 51359), (24, 51371), (28, 51407), (33, 51470), (35, 51497), (38, 51509), (39, 51518), (41, 51542), (47, 51629), (55, 51701), (56, 51710), (61, 51758), (63, 51773),

Gene: Ligma_64 Start: 51329, Stop: 51919, Start Num: 18

Candidate Starts for Ligma_64:

(Start: 18 @51329 has 9 MA's), (21, 51338), (28, 51401), (33, 51464), (35, 51491), (38, 51503), (39, 51512), (41, 51536), (47, 51623), (55, 51695), (56, 51704), (61, 51752), (63, 51767),

Gene: LittleMunchkin_65 Start: 54116, Stop: 54709, Start Num: 19

Candidate Starts for LittleMunchkin_65:

(Start: 19 @54116 has 1 MA's), (28, 54185), (33, 54248), (35, 54275), (36, 54281), (39, 54296), (41, 54320), (44, 54341), (47, 54407), (53, 54467), (54, 54473), (55, 54479), (56, 54488), (61, 54536), (63, 54551),

Gene: MakoManhole_62 Start: 51487, Stop: 52053, Start Num: 20

Candidate Starts for MakoManhole_62:

(3, 51094), (12, 51376), (13, 51385), (Start: 20 @51487 has 6 MA's), (28, 51556), (34, 51625), (35, 51646), (36, 51652), (39, 51667), (41, 51691), (44, 51712), (47, 51778), (48, 51781), (50, 51790), (53, 51838), (54, 51844), (56, 51859), (63, 51922),

Gene: Mariokart_60 Start: 50195, Stop: 50812, Start Num: 18

Candidate Starts for Mariokart_60:

(2, 49796), (6, 49919), (7, 49931), (9, 50006), (15, 50150), (Start: 18 @50195 has 9 MA's), (21, 50210), (23, 50225), (24, 50237), (28, 50273), (34, 50342), (35, 50363), (39, 50384), (41, 50408), (44, 50429), (47, 50495), (55, 50567), (56, 50576), (61, 50624), (63, 50639),

Gene: MossRose_65 Start: 52447, Stop: 53013, Start Num: 20

Candidate Starts for MossRose_65:

(3, 52054), (12, 52336), (13, 52345), (Start: 20 @52447 has 6 MA's), (28, 52516), (34, 52585), (35, 52606), (36, 52612), (39, 52627), (41, 52651), (44, 52672), (47, 52738), (48, 52741), (50, 52750), (53, 52798), (54, 52804), (56, 52819), (63, 52882),

Gene: NHagos_62 Start: 50884, Stop: 51486, Start Num: 17

Candidate Starts for NHagos_62:

(5, 50605), (9, 50707), (Start: 17 @50884 has 1 MA's), (25, 50944), (26, 50962), (30, 50992), (34, 51046), (35, 51067), (38, 51079), (39, 51088), (41, 51112), (44, 51133), (45, 51136), (48, 51202), (50, 51211), (56, 51280), (60, 51310), (62, 51334), (66, 51421),

Gene: Shatter_64 Start: 51329, Stop: 51919, Start Num: 18

Candidate Starts for Shatter_64:

(Start: 18 @51329 has 9 MA's), (21, 51338), (28, 51401), (33, 51464), (35, 51491), (38, 51503), (39, 51512), (41, 51536), (47, 51623), (55, 51695), (56, 51704), (61, 51752), (63, 51767),

Gene: Sisko_62 Start: 51559, Stop: 52155, Start Num: 18

Candidate Starts for Sisko_62:

(Start: 18 @51559 has 9 MA's), (28, 51637), (32, 51694), (34, 51706), (35, 51727), (41, 51772), (44, 51793), (47, 51859), (56, 51940), (61, 51988), (63, 52003),

Gene: Sour_64 Start: 53787, Stop: 54392, Start Num: 16

Candidate Starts for Sour_64:

(Start: 16 @53787 has 1 MA's), (28, 53883), (32, 53940), (34, 53952), (41, 54018), (44, 54039), (47, 54105), (53, 54165), (54, 54171), (55, 54177), (56, 54186), (61, 54234), (63, 54249),

Gene: StAugustine_97 Start: 69363, Stop: 69944, Start Num: 20

Candidate Starts for StAugustine_97:

(Start: 20 @69363 has 6 MA's), (28, 69432), (30, 69447), (38, 69534), (39, 69543), (40, 69558), (41, 69567), (46, 69627), (53, 69726), (69, 69939),

Gene: TPA2_72 Start: 57781, Stop: 58404, Start Num: 14

Candidate Starts for TPA2_72:

(8, 57622), (10, 57667), (11, 57736), (14, 57781), (22, 57871), (27, 57916), (29, 57940), (31, 57952), (35, 58021), (37, 58030), (38, 58033), (42, 58081), (43, 58084), (47, 58153), (48, 58156), (49, 58159), (52, 58213), (57, 58246), (58, 58255), (60, 58267), (64, 58366), (65, 58375),

Gene: Wooper_66 Start: 52518, Stop: 53084, Start Num: 20

Candidate Starts for Wooper_66:

(Start: 20 @52518 has 6 MA's), (28, 52587), (34, 52656), (35, 52677), (36, 52683), (39, 52698), (41, 52722), (44, 52743), (47, 52809), (48, 52812), (50, 52821), (53, 52869), (54, 52875), (56, 52890), (63, 52953),

Gene: Yago84_61 Start: 51044, Stop: 51640, Start Num: 18

Candidate Starts for Yago84_61:

(Start: 18 @51044 has 9 MA's), (28, 51122), (32, 51179), (34, 51191), (35, 51212), (41, 51257), (44, 51278), (46, 51317), (47, 51344), (54, 51410), (56, 51425), (61, 51473), (63, 51488),

Gene: Yeshua_66 Start: 52495, Stop: 53061, Start Num: 20

Candidate Starts for Yeshua_66:

(Start: 20 @52495 has 6 MA's), (28, 52564), (34, 52633), (35, 52654), (36, 52660), (39, 52675), (41, 52699), (44, 52720), (47, 52786), (48, 52789), (50, 52798), (53, 52846), (54, 52852), (56, 52867), (63, 52930),