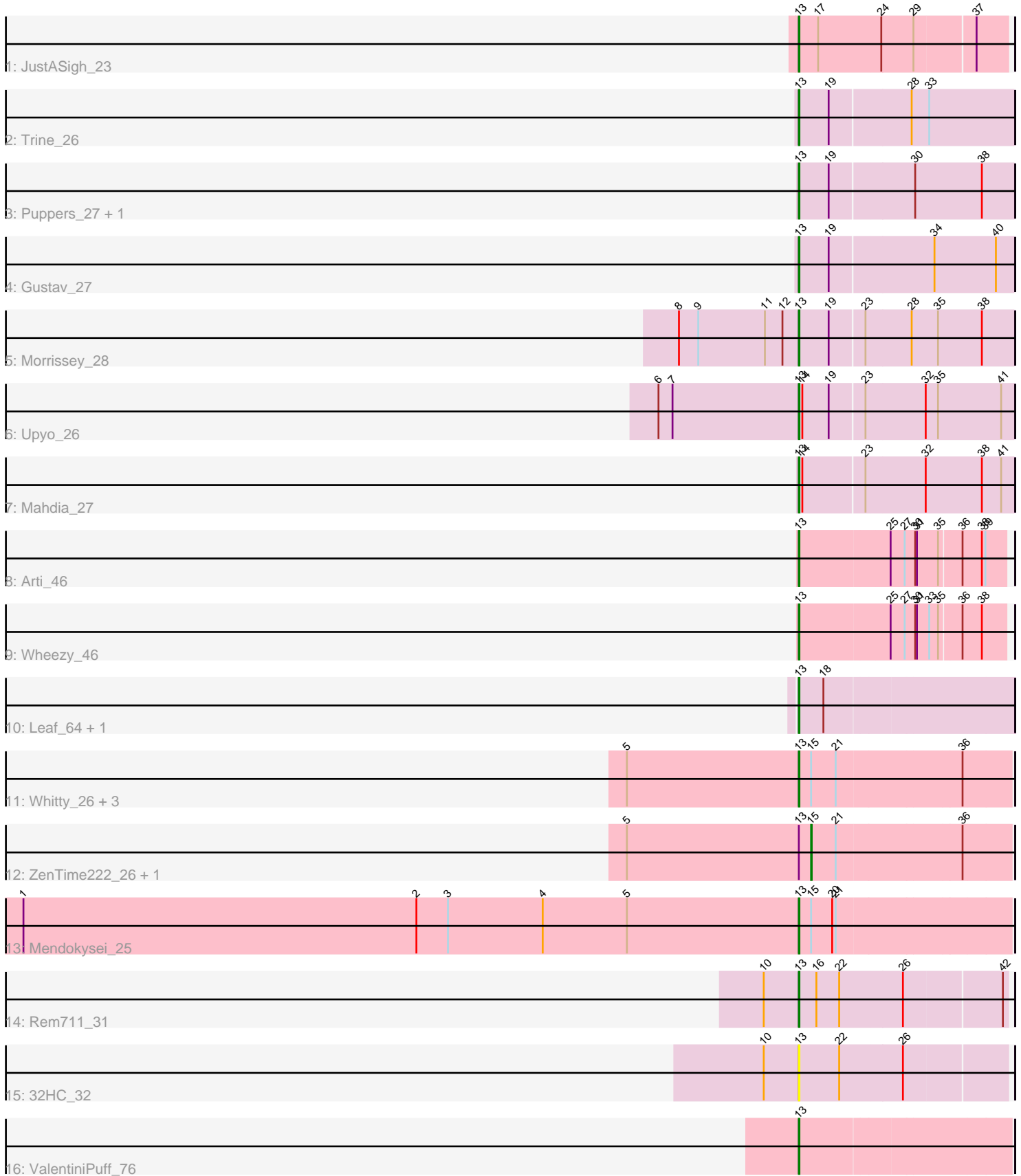


Pham 203295



Note: Tracks are now grouped by subcluster and scaled. Switching in subcluster is indicated by changes in track color. Track scale is now set by default to display the region 30 bp upstream of start 1 to 30 bp downstream of the last possible start. If this default region is judged to be packed too tightly with annotated starts, the track will be further scaled to only show that region of the ORF with annotated starts. This action will be indicated by adding "Zoomed" to the title. For starts, yellow indicates the location of called starts comprised solely of Glimmer/GeneMark auto-annotations, green indicates the location of called starts with at least 1 manual gene annotation.

Pham 203295 Report

This analysis was run 01/18/25 on database version 583.

Pham number 203295 has 22 members, 1 are drafts.

Phages represented in each track:

- Track 1 : JustASigh_23
- Track 2 : Trine_26
- Track 3 : Puppies_27, Widow_27
- Track 4 : Gustav_27
- Track 5 : Morrissey_28
- Track 6 : Upyo_26
- Track 7 : Mahdia_27
- Track 8 : Arti_46
- Track 9 : Wheezy_46
- Track 10 : Leaf_64, Dewdrop_64
- Track 11 : Whitty_26, RonRayGun_26, Ibrahim_26, Nairb_26
- Track 12 : ZenTime222_26, Bernal13_26
- Track 13 : Mendokysei_25
- Track 14 : Rem711_31
- Track 15 : 32HC_32
- Track 16 : ValentiniPuff_76

Summary of Final Annotations (See graph section above for start numbers):

The start number called the most often in the published annotations is 13, it was called in 19 of the 21 non-draft genes in the pham.

Genes that call this "Most Annotated" start:

- 32HC_32, Arti_46, Dewdrop_64, Gustav_27, Ibrahim_26, JustASigh_23, Leaf_64, Mahdia_27, Mendokysei_25, Morrissey_28, Nairb_26, Puppies_27, Rem711_31, RonRayGun_26, Trine_26, Upyo_26, ValentiniPuff_76, Wheezy_46, Whitty_26, Widow_27,

Genes that have the "Most Annotated" start but do not call it:

- Bernal13_26, ZenTime222_26,

Genes that do not have the "Most Annotated" start:

-

Summary by start number:

Start 13:

- Found in 22 of 22 (100.0%) of genes in pham
- Manual Annotations of this start: 19 of 21
- Called 90.9% of time when present
- Phage (with cluster) where this start called: 32HC_32 (Z), Arti_46 (CR2), Dewdrop_64 (GC), Gustav_27 (CD), Ibrahim_26 (T), JustASigh_23 (AH), Leaf_64 (GC), Mahdia_27 (CD), Mendokysei_25 (T), Morrissey_28 (CD), Nairb_26 (T), Puppies_27 (CD), Rem711_31 (Z), RonRayGun_26 (T), Trine_26 (CD), Upyo_26 (CD), ValentiniPuff_76 (singleton), Wheezy_46 (CR2), Whitty_26 (T), Widow_27 (CD),

Start 15:

- Found in 7 of 22 (31.8%) of genes in pham
- Manual Annotations of this start: 2 of 21
- Called 28.6% of time when present
- Phage (with cluster) where this start called: Bernal13_26 (T), ZenTime222_26 (T),

Summary by clusters:

There are 7 clusters represented in this pham: CR2, singleton, AH, CD, GC, T, Z,

Info for manual annotations of cluster AH:

- Start number 13 was manually annotated 1 time for cluster AH.

Info for manual annotations of cluster CD:

- Start number 13 was manually annotated 7 times for cluster CD.

Info for manual annotations of cluster CR2:

- Start number 13 was manually annotated 2 times for cluster CR2.

Info for manual annotations of cluster GC:

- Start number 13 was manually annotated 2 times for cluster GC.

Info for manual annotations of cluster T:

- Start number 13 was manually annotated 5 times for cluster T.
- Start number 15 was manually annotated 2 times for cluster T.

Info for manual annotations of cluster Z:

- Start number 13 was manually annotated 1 time for cluster Z.

Gene Information:

Gene: 32HC_32 Start: 26393, Stop: 26737, Start Num: 13

Candidate Starts for 32HC_32:

(10, 26333), (Start: 13 @26393 has 19 MA's), (22, 26462), (26, 26567),

Gene: Arti_46 Start: 36322, Stop: 36663, Start Num: 13

Candidate Starts for Arti_46:

(Start: 13 @36322 has 19 MA's), (25, 36472), (27, 36496), (30, 36514), (31, 36517), (35, 36553), (36, 36589), (38, 36622), (39, 36628),

Gene: Bernal13_26 Start: 23250, Stop: 23579, Start Num: 15

Candidate Starts for Bernal13_26:

(5, 22935), (Start: 13 @23229 has 19 MA's), (Start: 15 @23250 has 2 MA's), (21, 23292), (36, 23499),

Gene: Dewdrop_64 Start: 34457, Stop: 34810, Start Num: 13

Candidate Starts for Dewdrop_64:

(Start: 13 @34457 has 19 MA's), (18, 34499),

Gene: Gustav_27 Start: 21555, Stop: 21911, Start Num: 13

Candidate Starts for Gustav_27:

(Start: 13 @21555 has 19 MA's), (19, 21606), (34, 21777), (40, 21882),

Gene: Ibrahim_26 Start: 23229, Stop: 23579, Start Num: 13

Candidate Starts for Ibrahim_26:

(5, 22935), (Start: 13 @23229 has 19 MA's), (Start: 15 @23250 has 2 MA's), (21, 23292), (36, 23499),

Gene: JustASigh_23 Start: 23927, Stop: 24271, Start Num: 13

Candidate Starts for JustASigh_23:

(Start: 13 @23927 has 19 MA's), (17, 23960), (24, 24065), (29, 24119), (37, 24218),

Gene: Leaf_64 Start: 34457, Stop: 34810, Start Num: 13

Candidate Starts for Leaf_64:

(Start: 13 @34457 has 19 MA's), (18, 34499),

Gene: Mahdia_27 Start: 20874, Stop: 21230, Start Num: 13

Candidate Starts for Mahdia_27:

(Start: 13 @20874 has 19 MA's), (14, 20880), (23, 20982), (32, 21081), (38, 21177), (41, 21210),

Gene: Mendokysei_25 Start: 23038, Stop: 23388, Start Num: 13

Candidate Starts for Mendokysei_25:

(1, 21712), (2, 22384), (3, 22438), (4, 22600), (5, 22744), (Start: 13 @23038 has 19 MA's), (Start: 15 @23059 has 2 MA's), (20, 23095), (21, 23101),

Gene: Morrissey_28 Start: 22425, Stop: 22781, Start Num: 13

Candidate Starts for Morrissey_28:

(8, 22221), (9, 22254), (11, 22368), (12, 22398), (Start: 13 @22425 has 19 MA's), (19, 22476), (23, 22533), (28, 22608), (35, 22653), (38, 22728),

Gene: Nairb_26 Start: 23229, Stop: 23579, Start Num: 13

Candidate Starts for Nairb_26:

(5, 22935), (Start: 13 @23229 has 19 MA's), (Start: 15 @23250 has 2 MA's), (21, 23292), (36, 23499),

Gene: Puppies_27 Start: 21276, Stop: 21632, Start Num: 13

Candidate Starts for Puppies_27:

(Start: 13 @21276 has 19 MA's), (19, 21327), (30, 21465), (38, 21579),

Gene: Rem711_31 Start: 26394, Stop: 26738, Start Num: 13

Candidate Starts for Rem711_31:

(10, 26334), (Start: 13 @26394 has 19 MA's), (16, 26424), (22, 26463), (26, 26568), (42, 26730),

Gene: RonRayGun_26 Start: 23229, Stop: 23579, Start Num: 13
Candidate Starts for RonRayGun_26:
(5, 22935), (Start: 13 @23229 has 19 MA's), (Start: 15 @23250 has 2 MA's), (21, 23292), (36, 23499),

Gene: Trine_26 Start: 20938, Stop: 21297, Start Num: 13
Candidate Starts for Trine_26:
(Start: 13 @20938 has 19 MA's), (19, 20989), (28, 21124), (33, 21154),

Gene: Upyo_26 Start: 21192, Stop: 21551, Start Num: 13
Candidate Starts for Upyo_26:
(6, 20952), (7, 20976), (Start: 13 @21192 has 19 MA's), (14, 21198), (19, 21243), (23, 21300), (32, 21402), (35, 21423), (41, 21531),

Gene: ValentiniPuff_76 Start: 43850, Stop: 44197, Start Num: 13
Candidate Starts for ValentiniPuff_76:
(Start: 13 @43850 has 19 MA's),

Gene: Wheezy_46 Start: 36318, Stop: 36659, Start Num: 13
Candidate Starts for Wheezy_46:
(Start: 13 @36318 has 19 MA's), (25, 36468), (27, 36492), (30, 36510), (31, 36513), (33, 36534), (35, 36549), (36, 36585), (38, 36618),

Gene: Whitty_26 Start: 23229, Stop: 23579, Start Num: 13
Candidate Starts for Whitty_26:
(5, 22935), (Start: 13 @23229 has 19 MA's), (Start: 15 @23250 has 2 MA's), (21, 23292), (36, 23499),

Gene: Widow_27 Start: 21267, Stop: 21623, Start Num: 13
Candidate Starts for Widow_27:
(Start: 13 @21267 has 19 MA's), (19, 21318), (30, 21456), (38, 21570),

Gene: ZenTime222_26 Start: 23250, Stop: 23579, Start Num: 15
Candidate Starts for ZenTime222_26:
(5, 22935), (Start: 13 @23229 has 19 MA's), (Start: 15 @23250 has 2 MA's), (21, 23292), (36, 23499),