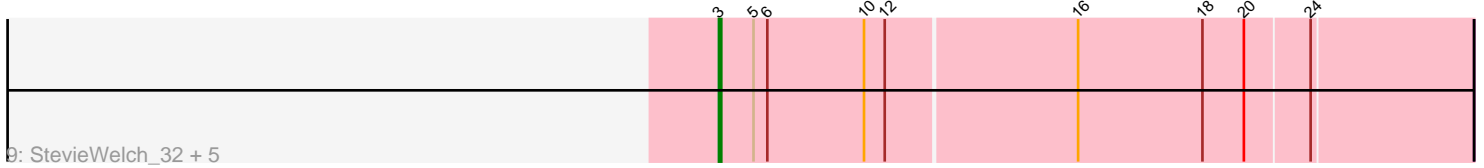
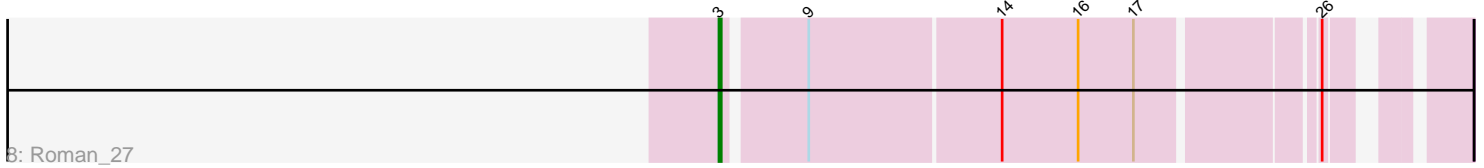
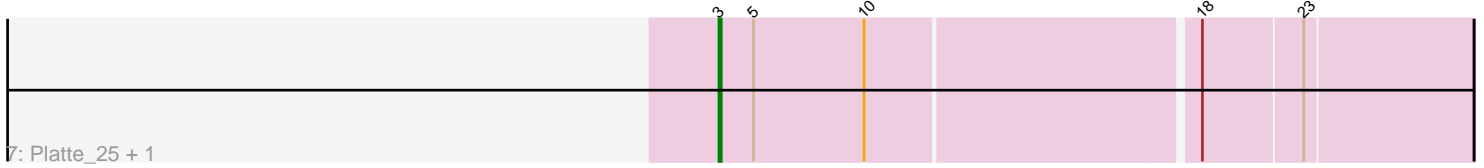
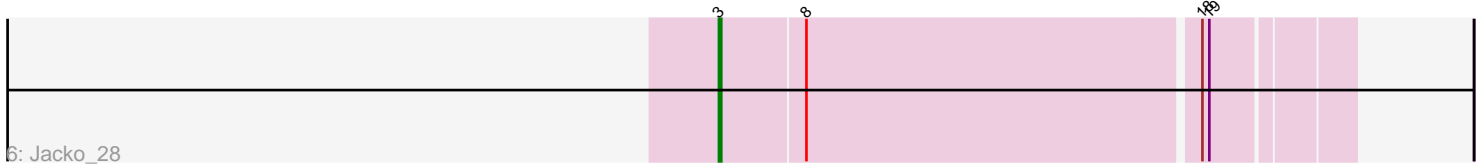
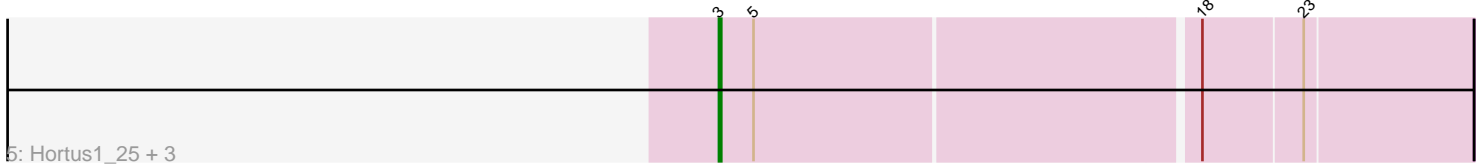
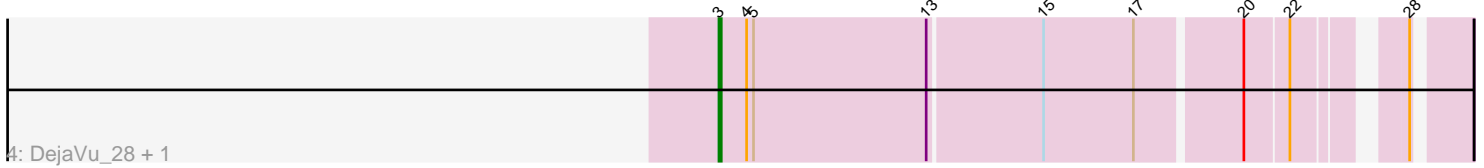
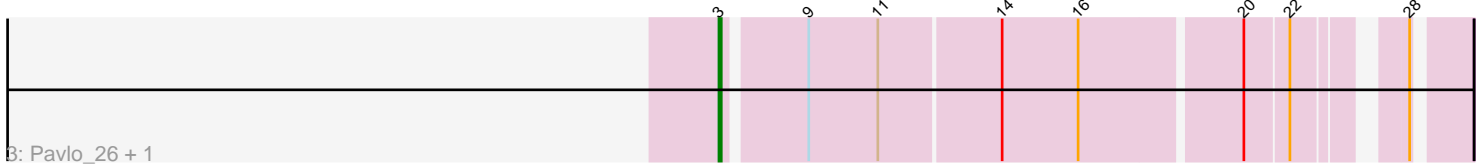
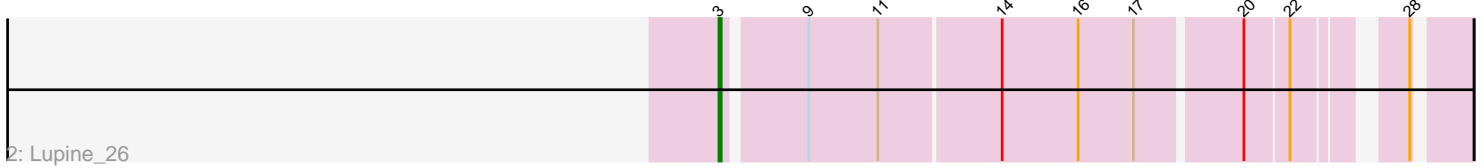
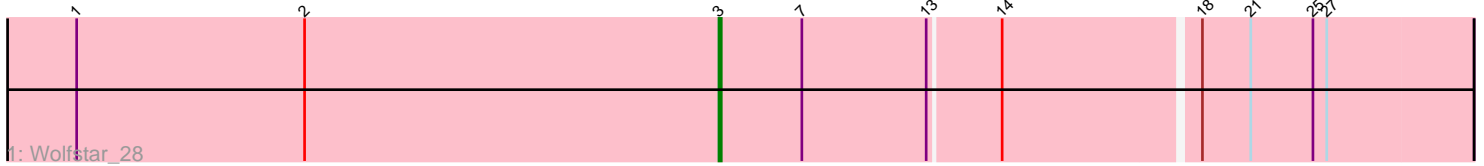


Pham 203314



Note: Tracks are now grouped by subcluster and scaled. Switching in subcluster is indicated by changes in track color. Track scale is now set by default to display the region 30 bp upstream of start 1 to 30 bp downstream of the last possible start. If this default region is judged to be packed too tightly with annotated starts, the track will be further scaled to only show that region of the ORF with annotated starts. This action will be indicated by adding "Zoomed" to the title. For starts, yellow indicates the location of called starts comprised solely of Glimmer/GeneMark auto-annotations, green indicates the location of called starts with at least 1 manual gene annotation.

Pham 203314 Report

This analysis was run 01/18/25 on database version 583.

WARNING: Pham size does not match number of genes in report. Either unphamerated genes have been added (by you) or starterator has removed genes due to invalid start codon.

Pham number 203314 has 20 members, 0 are drafts.

Phages represented in each track:

- Track 1 : Wolfstar_28
- Track 2 : Lupine_26
- Track 3 : Pavlo_26, PhillyPhilly_27
- Track 4 : DejaVu_28, Hubbs_27
- Track 5 : Hortus1_25, Tandem_25, OlinDD_25, Pioneer3_25
- Track 6 : Jacko_28
- Track 7 : Platte_25, Alleb_26
- Track 8 : Roman_27
- Track 9 : StevieWelch_32, Musetta_32, Welcome_33, ASegato_31, Fork_28, Yuma_31

Summary of Final Annotations (See graph section above for start numbers):

The start number called the most often in the published annotations is 3, it was called in 20 of the 20 non-draft genes in the pham.

Genes that call this "Most Annotated" start:

- ASegato_31, Alleb_26, DejaVu_28, Fork_28, Hortus1_25, Hubbs_27, Jacko_28, Lupine_26, Musetta_32, OlinDD_25, Pavlo_26, PhillyPhilly_27, Pioneer3_25, Platte_25, Roman_27, StevieWelch_32, Tandem_25, Welcome_33, Wolfstar_28, Yuma_31,

Genes that have the "Most Annotated" start but do not call it:

-

Genes that do not have the "Most Annotated" start:

-

Summary by start number:

Start 3:

- Found in 20 of 20 (100.0%) of genes in pham
- Manual Annotations of this start: 20 of 20
- Called 100.0% of time when present
- Phage (with cluster) where this start called: ASegato_31 (ED2), Alleb_26 (ED1), DejaVu_28 (ED1), Fork_28 (ED2), Hortus1_25 (ED1), Hubbs_27 (ED1), Jacko_28 (ED1), Lupine_26 (ED1), Musetta_32 (ED2), OlinDD_25 (ED1), Pavlo_26 (ED1), PhillyPhilly_27 (ED1), Pioneer3_25 (ED1), Platte_25 (ED1), Roman_27 (ED1), StevieWelch_32 (ED2), Tandem_25 (ED1), Welcome_33 (ED2), Wolfstar_28 (ED), Yuma_31 (ED2),

Summary by clusters:

There are 3 clusters represented in this pham: ED2, ED, ED1,

Info for manual annotations of cluster ED:

- Start number 3 was manually annotated 1 time for cluster ED.

Info for manual annotations of cluster ED1:

- Start number 3 was manually annotated 13 times for cluster ED1.

Info for manual annotations of cluster ED2:

- Start number 3 was manually annotated 6 times for cluster ED2.

Gene Information:

Gene: ASegato_31 Start: 9083, Stop: 9403, Start Num: 3

Candidate Starts for ASegato_31:

(Start: 3 @9083 has 20 MA's), (5, 9098), (6, 9104), (10, 9146), (12, 9155), (16, 9236), (18, 9290), (20, 9308), (24, 9335),

Gene: Alleb_26 Start: 8325, Stop: 8639, Start Num: 3

Candidate Starts for Alleb_26:

(Start: 3 @8325 has 20 MA's), (5, 8340), (10, 8388), (18, 8526), (23, 8568),

Gene: DejaVu_28 Start: 8547, Stop: 8840, Start Num: 3

Candidate Starts for DejaVu_28:

(Start: 3 @8547 has 20 MA's), (4, 8559), (5, 8562), (13, 8637), (15, 8685), (17, 8724), (20, 8766), (22, 8784), (28, 8820),

Gene: Fork_28 Start: 8740, Stop: 9060, Start Num: 3

Candidate Starts for Fork_28:

(Start: 3 @8740 has 20 MA's), (5, 8755), (6, 8761), (10, 8803), (12, 8812), (16, 8893), (18, 8947), (20, 8965), (24, 8992),

Gene: Hortus1_25 Start: 8324, Stop: 8638, Start Num: 3

Candidate Starts for Hortus1_25:

(Start: 3 @8324 has 20 MA's), (5, 8339), (18, 8525), (23, 8567),

Gene: Hubbs_27 Start: 8759, Stop: 9052, Start Num: 3

Candidate Starts for Hubbs_27:

(Start: 3 @8759 has 20 MA's), (4, 8771), (5, 8774), (13, 8849), (15, 8897), (17, 8936), (20, 8978), (22, 8996), (28, 9032),

Gene: Jacko_28 Start: 8885, Stop: 9145, Start Num: 3

Candidate Starts for Jacko_28:

(Start: 3 @8885 has 20 MA's), (8, 8921), (18, 9086), (19, 9089),

Gene: Lupine_26 Start: 8437, Stop: 8724, Start Num: 3

Candidate Starts for Lupine_26:

(Start: 3 @8437 has 20 MA's), (9, 8470), (11, 8500), (14, 8551), (16, 8584), (17, 8608), (20, 8650), (22, 8668), (28, 8704),

Gene: Musetta_32 Start: 9451, Stop: 9771, Start Num: 3

Candidate Starts for Musetta_32:

(Start: 3 @9451 has 20 MA's), (5, 9466), (6, 9472), (10, 9514), (12, 9523), (16, 9604), (18, 9658), (20, 9676), (24, 9703),

Gene: OlinDD_25 Start: 8323, Stop: 8637, Start Num: 3

Candidate Starts for OlinDD_25:

(Start: 3 @8323 has 20 MA's), (5, 8338), (18, 8524), (23, 8566),

Gene: Pavlo_26 Start: 8712, Stop: 8999, Start Num: 3

Candidate Starts for Pavlo_26:

(Start: 3 @8712 has 20 MA's), (9, 8745), (11, 8775), (14, 8826), (16, 8859), (20, 8925), (22, 8943), (28, 8979),

Gene: PhillyPhilly_27 Start: 8617, Stop: 8904, Start Num: 3

Candidate Starts for PhillyPhilly_27:

(Start: 3 @8617 has 20 MA's), (9, 8650), (11, 8680), (14, 8731), (16, 8764), (20, 8830), (22, 8848), (28, 8884),

Gene: Pioneer3_25 Start: 8322, Stop: 8636, Start Num: 3

Candidate Starts for Pioneer3_25:

(Start: 3 @8322 has 20 MA's), (5, 8337), (18, 8523), (23, 8565),

Gene: Platte_25 Start: 8092, Stop: 8406, Start Num: 3

Candidate Starts for Platte_25:

(Start: 3 @8092 has 20 MA's), (5, 8107), (10, 8155), (18, 8293), (23, 8335),

Gene: Roman_27 Start: 8615, Stop: 8899, Start Num: 3

Candidate Starts for Roman_27:

(Start: 3 @8615 has 20 MA's), (9, 8648), (14, 8729), (16, 8762), (17, 8786), (26, 8855),

Gene: StevieWelch_32 Start: 9430, Stop: 9750, Start Num: 3

Candidate Starts for StevieWelch_32:

(Start: 3 @9430 has 20 MA's), (5, 9445), (6, 9451), (10, 9493), (12, 9502), (16, 9583), (18, 9637), (20, 9655), (24, 9682),

Gene: Tandem_25 Start: 8261, Stop: 8575, Start Num: 3

Candidate Starts for Tandem_25:

(Start: 3 @8261 has 20 MA's), (5, 8276), (18, 8462), (23, 8504),

Gene: Welcome_33 Start: 9447, Stop: 9767, Start Num: 3

Candidate Starts for Welcome_33:

(Start: 3 @9447 has 20 MA's), (5, 9462), (6, 9468), (10, 9510), (12, 9519), (16, 9600), (18, 9654), (20, 9672), (24, 9699),

Gene: Wolfstar_28 Start: 9095, Stop: 9412, Start Num: 3

Candidate Starts for Wolfstar_28:

(1, 8816), (2, 8915), (Start: 3 @9095 has 20 MA's), (7, 9131), (13, 9185), (14, 9215), (18, 9296), (21, 9317), (25, 9344), (27, 9350),

Gene: Yuma_31 Start: 9350, Stop: 9670, Start Num: 3

Candidate Starts for Yuma_31:

(Start: 3 @9350 has 20 MA's), (5, 9365), (6, 9371), (10, 9413), (12, 9422), (16, 9503), (18, 9557), (20, 9575), (24, 9602),