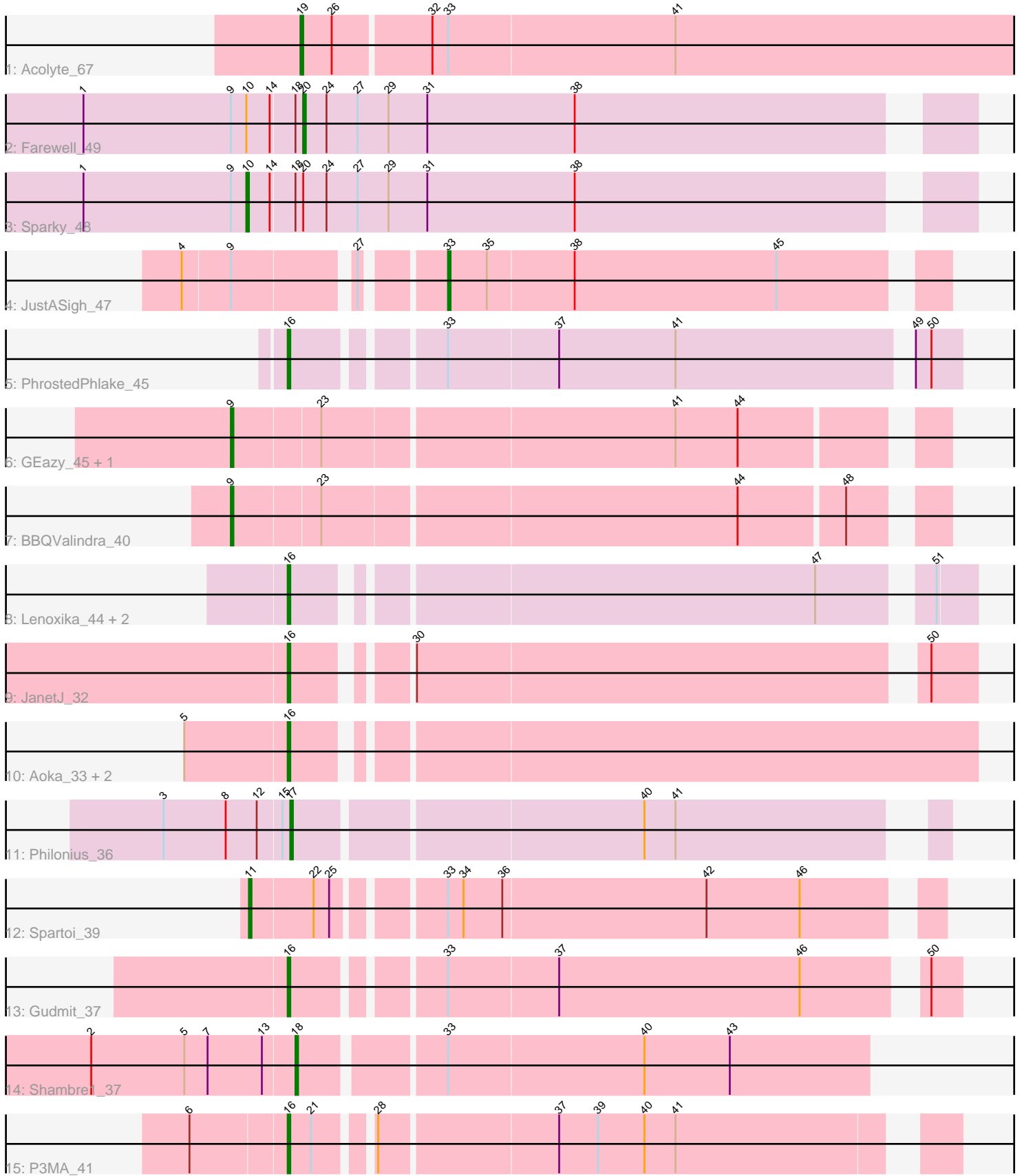


Pham 203331



Note: Tracks are now grouped by subcluster and scaled. Switching in subcluster is indicated by changes in track color. Track scale is now set by default to display the region 30 bp upstream of start 1 to 30 bp downstream of the last possible start. If this default region is judged to be packed too tightly with annotated starts, the track will be further scaled to only show that region of the ORF with annotated starts. This action will be indicated by adding "Zoomed" to the title. For starts, yellow indicates the location of called starts comprised solely of Glimmer/GeneMark auto-annotations, green indicates the location of called starts with at least 1 manual gene annotation.

## Pham 203331 Report

This analysis was run 01/18/25 on database version 583.

Pham number 203331 has 20 members, 3 are drafts.

Phages represented in each track:

- Track 1 : Acolyte\_67
- Track 2 : Farewell\_49
- Track 3 : Sparky\_48
- Track 4 : JustASigh\_47
- Track 5 : PhrostedPhlake\_45
- Track 6 : GEazy\_45, HannahD\_43
- Track 7 : BBQValindra\_40
- Track 8 : Lenoxika\_44, Ryan\_44, Nandita\_44
- Track 9 : JanetJ\_32
- Track 10 : Aoka\_33, EvenBluerMoon\_39, PrairieDogTown\_48
- Track 11 : Philonius\_36
- Track 12 : Spartoi\_39
- Track 13 : Gudmit\_37
- Track 14 : Shambre1\_37
- Track 15 : P3MA\_41

### ***Summary of Final Annotations (See graph section above for start numbers):***

The start number called the most often in the published annotations is 16, it was called in 7 of the 17 non-draft genes in the pham.

Genes that call this "Most Annotated" start:

- Aoka\_33, EvenBluerMoon\_39, Gudmit\_37, JanetJ\_32, Lenoxika\_44, Nandita\_44, P3MA\_41, PhrostedPhlake\_45, PrairieDogTown\_48, Ryan\_44,

Genes that have the "Most Annotated" start but do not call it:

- 

Genes that do not have the "Most Annotated" start:

- Acolyte\_67, BBQValindra\_40, Farewell\_49, GEazy\_45, HannahD\_43, JustASigh\_47, Philonius\_36, Shambre1\_37, Sparky\_48, Spartoi\_39,

**Summary by start number:**

Start 9:

- Found in 6 of 20 ( 30.0% ) of genes in pham
- Manual Annotations of this start: 3 of 17
- Called 50.0% of time when present
- Phage (with cluster) where this start called: BBQValindra\_40 (DB), GEazy\_45 (DB), HannahD\_43 (DB),

Start 10:

- Found in 2 of 20 ( 10.0% ) of genes in pham
- Manual Annotations of this start: 1 of 17
- Called 50.0% of time when present
- Phage (with cluster) where this start called: Sparky\_48 (AF),

Start 11:

- Found in 1 of 20 ( 5.0% ) of genes in pham
- Manual Annotations of this start: 1 of 17
- Called 100.0% of time when present
- Phage (with cluster) where this start called: Spartoi\_39 (singleton),

Start 16:

- Found in 10 of 20 ( 50.0% ) of genes in pham
- Manual Annotations of this start: 7 of 17
- Called 100.0% of time when present
- Phage (with cluster) where this start called: Aoka\_33 (FO), EvenBluerMoon\_39 (FO), Gudmit\_37 (singleton), JanetJ\_32 (FO), Lenoxika\_44 (FF), Nandita\_44 (FF), P3MA\_41 (singleton), PhrostedPhlake\_45 (CV), PrairieDogTown\_48 (FO), Ryan\_44 (FF),

Start 17:

- Found in 1 of 20 ( 5.0% ) of genes in pham
- Manual Annotations of this start: 1 of 17
- Called 100.0% of time when present
- Phage (with cluster) where this start called: Philonius\_36 (N),

Start 18:

- Found in 3 of 20 ( 15.0% ) of genes in pham
- Manual Annotations of this start: 1 of 17
- Called 33.3% of time when present
- Phage (with cluster) where this start called: Shambre1\_37 (singleton),

Start 19:

- Found in 1 of 20 ( 5.0% ) of genes in pham
- Manual Annotations of this start: 1 of 17
- Called 100.0% of time when present
- Phage (with cluster) where this start called: Acolyte\_67 (A2),

Start 20:

- Found in 2 of 20 ( 10.0% ) of genes in pham
- Manual Annotations of this start: 1 of 17
- Called 50.0% of time when present
- Phage (with cluster) where this start called: Farewell\_49 (AF),

Start 33:

- Found in 6 of 20 ( 30.0% ) of genes in pham
- Manual Annotations of this start: 1 of 17
- Called 16.7% of time when present
- Phage (with cluster) where this start called: JustASigh\_47 (AH),

### **Summary by clusters:**

There are 9 clusters represented in this pham: singleton, AF, AH, DB, N, A2, FF, CV, FO,

Info for manual annotations of cluster A2:

- Start number 19 was manually annotated 1 time for cluster A2.

Info for manual annotations of cluster AF:

- Start number 10 was manually annotated 1 time for cluster AF.
- Start number 20 was manually annotated 1 time for cluster AF.

Info for manual annotations of cluster AH:

- Start number 33 was manually annotated 1 time for cluster AH.

Info for manual annotations of cluster CV:

- Start number 16 was manually annotated 1 time for cluster CV.

Info for manual annotations of cluster DB:

- Start number 9 was manually annotated 3 times for cluster DB.

Info for manual annotations of cluster FF:

- Start number 16 was manually annotated 2 times for cluster FF.

Info for manual annotations of cluster FO:

- Start number 16 was manually annotated 2 times for cluster FO.

Info for manual annotations of cluster N:

- Start number 17 was manually annotated 1 time for cluster N.

### **Gene Information:**

Gene: Acolyte\_67 Start: 43619, Stop: 43897, Start Num: 19

Candidate Starts for Acolyte\_67:

(Start: 19 @43619 has 1 MA's), (26, 43631), (32, 43667), (Start: 33 @43673 has 1 MA's), (41, 43760),

Gene: Aoka\_33 Start: 26261, Stop: 26512, Start Num: 16

Candidate Starts for Aoka\_33:

(5, 26222), (Start: 16 @26261 has 7 MA's),

Gene: BBQValindra\_40 Start: 33028, Stop: 33285, Start Num: 9

Candidate Starts for BBQValindra\_40:

(Start: 9 @33028 has 3 MA's), (23, 33061), (44, 33217), (48, 33256),

Gene: EvenBluerMoon\_39 Start: 26499, Stop: 26750, Start Num: 16

Candidate Starts for EvenBluerMoon\_39:

(5, 26460), (Start: 16 @26499 has 7 MA's),

Gene: Farewell\_49 Start: 36104, Stop: 36349, Start Num: 20

Candidate Starts for Farewell\_49:

(1, 36020), (Start: 9 @36077 has 3 MA's), (Start: 10 @36083 has 1 MA's), (14, 36092), (Start: 18 @36101 has 1 MA's), (Start: 20 @36104 has 1 MA's), (24, 36113), (27, 36125), (29, 36137), (31, 36152), (38, 36209),

Gene: GEazy\_45 Start: 32607, Stop: 32864, Start Num: 9

Candidate Starts for GEazy\_45:

(Start: 9 @32607 has 3 MA's), (23, 32640), (41, 32772), (44, 32796),

Gene: Gudmit\_37 Start: 27130, Stop: 27366, Start Num: 16

Candidate Starts for Gudmit\_37:

(Start: 16 @27130 has 7 MA's), (Start: 33 @27181 has 1 MA's), (37, 27223), (46, 27316), (50, 27355),

Gene: HannahD\_43 Start: 31974, Stop: 32231, Start Num: 9

Candidate Starts for HannahD\_43:

(Start: 9 @31974 has 3 MA's), (23, 32007), (41, 32139), (44, 32163),

Gene: JanetJ\_32 Start: 26887, Stop: 27126, Start Num: 16

Candidate Starts for JanetJ\_32:

(Start: 16 @26887 has 7 MA's), (30, 26923), (50, 27109),

Gene: JustASigh\_47 Start: 34656, Stop: 34838, Start Num: 33

Candidate Starts for JustASigh\_47:

(4, 34569), (Start: 9 @34587 has 3 MA's), (27, 34629), (Start: 33 @34656 has 1 MA's), (35, 34671), (38, 34704), (45, 34782),

Gene: Lenoxika\_44 Start: 30350, Stop: 30589, Start Num: 16

Candidate Starts for Lenoxika\_44:

(Start: 16 @30350 has 7 MA's), (47, 30539), (51, 30575),

Gene: Nandita\_44 Start: 30213, Stop: 30452, Start Num: 16

Candidate Starts for Nandita\_44:

(Start: 16 @30213 has 7 MA's), (47, 30402), (51, 30438),

Gene: P3MA\_41 Start: 31122, Stop: 31355, Start Num: 16

Candidate Starts for P3MA\_41:

(6, 31086), (Start: 16 @31122 has 7 MA's), (21, 31131), (28, 31149), (37, 31215), (39, 31230), (40, 31248), (41, 31260),

Gene: Philonius\_36 Start: 27911, Stop: 28141, Start Num: 17

Candidate Starts for Philonius\_36:

(3, 27863), (8, 27887), (12, 27899), (15, 27908), (Start: 17 @27911 has 1 MA's), (40, 28040), (41, 28052),

Gene: PhrostedPhlake\_45 Start: 32973, Stop: 33212, Start Num: 16

Candidate Starts for PhrostedPhlake\_45:

(Start: 16 @32973 has 7 MA's), (Start: 33 @33024 has 1 MA's), (37, 33066), (41, 33111), (49, 33195), (50, 33201),

Gene: PrairieDogTown\_48 Start: 26501, Stop: 26752, Start Num: 16

Candidate Starts for PrairieDogTown\_48:  
(5, 26462), (Start: 16 @26501 has 7 MA's),

Gene: Ryan\_44 Start: 30762, Stop: 31001, Start Num: 16  
Candidate Starts for Ryan\_44:  
(Start: 16 @30762 has 7 MA's), (47, 30951), (51, 30987),

Gene: Shambre1\_37 Start: 25536, Stop: 25748, Start Num: 18  
Candidate Starts for Shambre1\_37:  
(2, 25458), (5, 25494), (7, 25503), (13, 25524), (Start: 18 @25536 has 1 MA's), (Start: 33 @25587 has 1 MA's), (40, 25662), (43, 25695),

Gene: Sparky\_48 Start: 36514, Stop: 36780, Start Num: 10  
Candidate Starts for Sparky\_48:  
(1, 36451), (Start: 9 @36508 has 3 MA's), (Start: 10 @36514 has 1 MA's), (14, 36523), (Start: 18 @36532 has 1 MA's), (Start: 20 @36535 has 1 MA's), (24, 36544), (27, 36556), (29, 36568), (31, 36583), (38, 36640),

Gene: Spartoi\_39 Start: 26733, Stop: 26978, Start Num: 11  
Candidate Starts for Spartoi\_39:  
(Start: 11 @26733 has 1 MA's), (22, 26757), (25, 26763), (Start: 33 @26799 has 1 MA's), (34, 26805), (36, 26820), (42, 26898), (46, 26934),