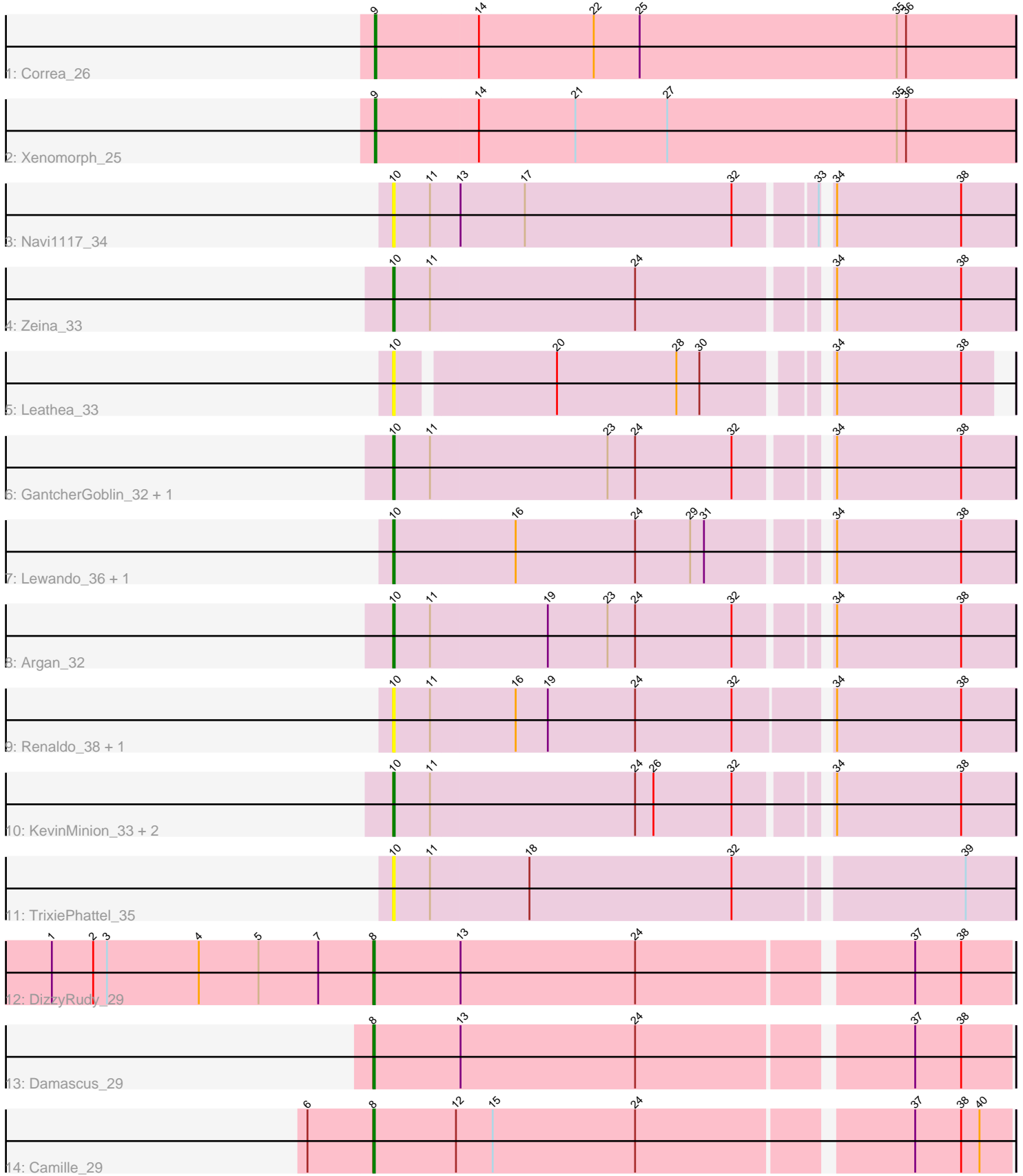


# Pham 203345



Note: Tracks are now grouped by subcluster and scaled. Switching in subcluster is indicated by changes in track color. Track scale is now set by default to display the region 30 bp upstream of start 1 to 30 bp downstream of the last possible start. If this default region is judged to be packed too tightly with annotated starts, the track will be further scaled to only show that region of the ORF with annotated starts. This action will be indicated by adding "Zoomed" to the title. For starts, yellow indicates the location of called starts comprised solely of Glimmer/GeneMark auto-annotations, green indicates the location of called starts with at least 1 manual gene annotation.

## Pham 203345 Report

This analysis was run 01/18/25 on database version 583.

Pham number 203345 has 19 members, 9 are drafts.

Phages represented in each track:

- Track 1 : Correa\_26
- Track 2 : Xenomorph\_25
- Track 3 : Navi1117\_34
- Track 4 : Zeina\_33
- Track 5 : Leathea\_33
- Track 6 : GantcherGoblin\_32, Phaila\_32
- Track 7 : Lewando\_36, Kinny\_36
- Track 8 : Argan\_32
- Track 9 : Renaldo\_38, Biscute\_37
- Track 10 : KevinMinion\_33, Uzumaki\_33, Tenney120\_34
- Track 11 : TrixiePhattel\_35
- Track 12 : DizzyRudy\_29
- Track 13 : Damascus\_29
- Track 14 : Camille\_29

### ***Summary of Final Annotations (See graph section above for start numbers):***

The start number called the most often in the published annotations is 10, it was called in 5 of the 10 non-draft genes in the pham.

Genes that call this "Most Annotated" start:

- Argan\_32, Biscute\_37, GantcherGoblin\_32, KevinMinion\_33, Kinny\_36, Leathea\_33, Lewando\_36, Navi1117\_34, Phaila\_32, Renaldo\_38, Tenney120\_34, TrixiePhattel\_35, Uzumaki\_33, Zeina\_33,

Genes that have the "Most Annotated" start but do not call it:

- 

Genes that do not have the "Most Annotated" start:

- Camille\_29, Correa\_26, Damascus\_29, DizzyRudy\_29, Xenomorph\_25,

### **Summary by start number:**

Start 8:

- Found in 3 of 19 ( 15.8% ) of genes in pham
- Manual Annotations of this start: 3 of 10
- Called 100.0% of time when present
- Phage (with cluster) where this start called: Camille\_29 (EL), Damascus\_29 (EL), DizzyRudy\_29 (EL),

Start 9:

- Found in 2 of 19 ( 10.5% ) of genes in pham
- Manual Annotations of this start: 2 of 10
- Called 100.0% of time when present
- Phage (with cluster) where this start called: Correa\_26 (AM), Xenomorph\_25 (AM),

Start 10:

- Found in 14 of 19 ( 73.7% ) of genes in pham
- Manual Annotations of this start: 5 of 10
- Called 100.0% of time when present
- Phage (with cluster) where this start called: Argan\_32 (AU6), Biscute\_37 (AU6), GantcherGoblin\_32 (AU6), KevinMinion\_33 (AU6), Kinny\_36 (AU6), Leathea\_33 (AU6), Lewando\_36 (AU6), Navi1117\_34 (AU6), Phaila\_32 (AU6), Renaldo\_38 (AU6), Tenney120\_34 (AU6), TrixiePhattel\_35 (AU6), Uzumaki\_33 (AU6), Zeina\_33 (AU6),

### **Summary by clusters:**

There are 3 clusters represented in this pham: EL, AM, AU6,

Info for manual annotations of cluster AM:

- Start number 9 was manually annotated 2 times for cluster AM.

Info for manual annotations of cluster AU6:

- Start number 10 was manually annotated 5 times for cluster AU6.

Info for manual annotations of cluster EL:

- Start number 8 was manually annotated 3 times for cluster EL.

### **Gene Information:**

Gene: Argan\_32 Start: 26978, Stop: 27364, Start Num: 10

Candidate Starts for Argan\_32:

(Start: 10 @26978 has 5 MA's), (11, 27002), (19, 27077), (23, 27116), (24, 27134), (32, 27197), (34, 27248), (38, 27329),

Gene: Biscute\_37 Start: 28599, Stop: 28991, Start Num: 10

Candidate Starts for Biscute\_37:

(Start: 10 @28599 has 5 MA's), (11, 28623), (16, 28677), (19, 28698), (24, 28755), (32, 28818), (34, 28875), (38, 28956),

Gene: Camille\_29 Start: 23493, Stop: 23894, Start Num: 8

Candidate Starts for Camille\_29:

(6, 23451), (Start: 8 @23493 has 3 MA's), (12, 23547), (15, 23571), (24, 23664), (37, 23832), (38, 23862), (40, 23874),

Gene: Correa\_26 Start: 24066, Stop: 24482, Start Num: 9

Candidate Starts for Correa\_26:

(Start: 9 @24066 has 2 MA's), (14, 24132), (22, 24207), (25, 24237), (35, 24405), (36, 24411),

Gene: Damascus\_29 Start: 24399, Stop: 24800, Start Num: 8

Candidate Starts for Damascus\_29:

(Start: 8 @24399 has 3 MA's), (13, 24456), (24, 24570), (37, 24738), (38, 24768),

Gene: DizzyRudy\_29 Start: 24315, Stop: 24716, Start Num: 8

Candidate Starts for DizzyRudy\_29:

(1, 24105), (2, 24132), (3, 24141), (4, 24201), (5, 24240), (7, 24279), (Start: 8 @24315 has 3 MA's), (13, 24372), (24, 24486), (37, 24654), (38, 24684),

Gene: GantcherGoblin\_32 Start: 27017, Stop: 27403, Start Num: 10

Candidate Starts for GantcherGoblin\_32:

(Start: 10 @27017 has 5 MA's), (11, 27041), (23, 27155), (24, 27173), (32, 27236), (34, 27287), (38, 27368),

Gene: KevinMinion\_33 Start: 28111, Stop: 28497, Start Num: 10

Candidate Starts for KevinMinion\_33:

(Start: 10 @28111 has 5 MA's), (11, 28135), (24, 28267), (26, 28279), (32, 28330), (34, 28381), (38, 28462),

Gene: Kinny\_36 Start: 28866, Stop: 29252, Start Num: 10

Candidate Starts for Kinny\_36:

(Start: 10 @28866 has 5 MA's), (16, 28944), (24, 29022), (29, 29058), (31, 29067), (34, 29136), (38, 29217),

Gene: Leathea\_33 Start: 26912, Stop: 27271, Start Num: 10

Candidate Starts for Leathea\_33:

(Start: 10 @26912 has 5 MA's), (20, 27008), (28, 27086), (30, 27101), (34, 27170), (38, 27251),

Gene: Lewando\_36 Start: 28935, Stop: 29321, Start Num: 10

Candidate Starts for Lewando\_36:

(Start: 10 @28935 has 5 MA's), (16, 29013), (24, 29091), (29, 29127), (31, 29136), (34, 29205), (38, 29286),

Gene: Navi1117\_34 Start: 27244, Stop: 27630, Start Num: 10

Candidate Starts for Navi1117\_34:

(Start: 10 @27244 has 5 MA's), (11, 27268), (13, 27286), (17, 27328), (32, 27463), (33, 27511), (34, 27514), (38, 27595),

Gene: Phaila\_32 Start: 26595, Stop: 26981, Start Num: 10

Candidate Starts for Phaila\_32:

(Start: 10 @26595 has 5 MA's), (11, 26619), (23, 26733), (24, 26751), (32, 26814), (34, 26865), (38, 26946),

Gene: Renaldo\_38 Start: 28944, Stop: 29336, Start Num: 10

Candidate Starts for Renaldo\_38:

(Start: 10 @28944 has 5 MA's), (11, 28968), (16, 29022), (19, 29043), (24, 29100), (32, 29163), (34, 29220), (38, 29301),

Gene: Tenney120\_34 Start: 27306, Stop: 27692, Start Num: 10

Candidate Starts for Tenney120\_34:

(Start: 10 @27306 has 5 MA's), (11, 27330), (24, 27462), (26, 27474), (32, 27525), (34, 27576), (38, 27657),

Gene: TrixiePhattel\_35 Start: 27141, Stop: 27533, Start Num: 10

Candidate Starts for TrixiePhattel\_35:

(Start: 10 @27141 has 5 MA's), (11, 27165), (18, 27228), (32, 27360), (39, 27501),

Gene: Uzumaki\_33 Start: 27836, Stop: 28222, Start Num: 10

Candidate Starts for Uzumaki\_33:

(Start: 10 @27836 has 5 MA's), (11, 27860), (24, 27992), (26, 28004), (32, 28055), (34, 28106), (38, 28187),

Gene: Xenomorph\_25 Start: 24569, Stop: 24985, Start Num: 9

Candidate Starts for Xenomorph\_25:

(Start: 9 @24569 has 2 MA's), (14, 24635), (21, 24698), (27, 24758), (35, 24908), (36, 24914),

Gene: Zeina\_33 Start: 27217, Stop: 27603, Start Num: 10

Candidate Starts for Zeina\_33:

(Start: 10 @27217 has 5 MA's), (11, 27241), (24, 27373), (34, 27487), (38, 27568),